

Chapter HM

LAND USE AND OWNERSHIP,  
HANNA AND CARBON BASINS

By T.T. Taber and S.A. Kinney

*In* U.S. Geological Survey Professional Paper 1625-A.

## Contents

Explanation of Cultural Information.....	HM-1
Map Information for the Hanna and Carbon Basins Land Use and Land Cover Map.....	HM-2
Map Information for the Hanna and Carbon Basins Subsurface Ownership Map.....	HM-3
Map Information for the Hanna and Carbon Basins Surface Ownership Map.....	HM-4

## Figures

- HM-1 Land Use and Land Cover; Hanna and Carbon Basins
- HM-2. Subsurface Ownership; Hanna and Carbon Basins
- HM-3 Surface Ownership; Hanna and Carbon Basins

## **EXPLANATION OF CULTURAL INFORMATION**

**Roads**—These are selected roads from USGS 1:2,000,000-scale digital line graphs (DLG). These contain two types of roads.

**Interstate**—These are major roads that are part of the national interstate system.

**Highway**—These include State and other highways.

**Railroads**—These are railroads from USGS 1:2,000,000-scale digital line graphs (DLG).

**City/Towns**—These features represent general locations of cities and towns in the basin.

**Latitude/Longitude Tic Marks**—These tics show locations of key parallels and meridians that pass through the basin.

## MAP INFORMATION FOR THE HANNA AND CARBON BASINS LAND USE AND LAND COVER MAP

**Sources**—U.S. Geological Survey (USGS), Land Use and Land Cover Geographical Information Retrieval and Analysis System (GIRAS) files. 1:250,000 scale. The original maps were compiled from data collected between 1972 and 1979. Land Use and Land Cover Digital Data from 1:250,000 and 1:100,000 Scale Maps, Data Users Guide. 1990. Reston, Virginia. A complete description of these files can be obtained from the USGS at:

<http://edcwww.cr.usgs.gov/doc/edchome/ndcdb/ndcdb.html>

See figure **HM-1**.

**Description**—The land use and land cover maps were simplified from their original format for increased readability. The narrowly defined categories were grouped into the following categories:

**Agriculture**—This category includes cropland, pastures, hay fields, and other agriculture.

**Barren Land**—This category includes sandy areas, bare rock, and/or bare ground.

**Forest**—This category includes deciduous and/or evergreen forest land.

**Rangeland**—This category includes shrub, brush, and/or herbaceous rangeland.

**Urban/Industrial**—This category includes residential, commercial, and/or industrial land uses.

**Water**—This category includes rivers, streams, and lakes.

## **MAP INFORMATION FOR THE HANNA AND CARBON BASINS SUBSURFACE OWNERSHIP MAP**

**Source**—The digital data for this graphic were compiled by the Montana BLM office and the USGS Energy Team from 1:24,000-scale BLM ownership maps.

**Description** - This map gives an overview of subsurface areas managed by Federal agencies within the Hanna and Carbon Basins.

See figure **HM-2**.

**Federal All Minerals**—The federal government owns the rights to all minerals. This includes coal, oil, gas, and other mineral rights.

**Federal Coal**—The federal government owns the rights to coal minerals only.

**Private/State/Other**—All mineral rights are Privately-held or State-held.

## MAP INFORMATION FOR THE HANNA AND CARBON BASINS SURFACE OWNERSHIP MAP

**Source**—The digital data for this graphic were compiled by the U.S. Bureau of Land Management (BLM) and the USGS from 1:24,000-scale BLM ownership maps.

**Description** - This map gives an overview of surface areas managed by Federal agencies within the Hanna and Carbon Basins.

See figure [HM-3](#).

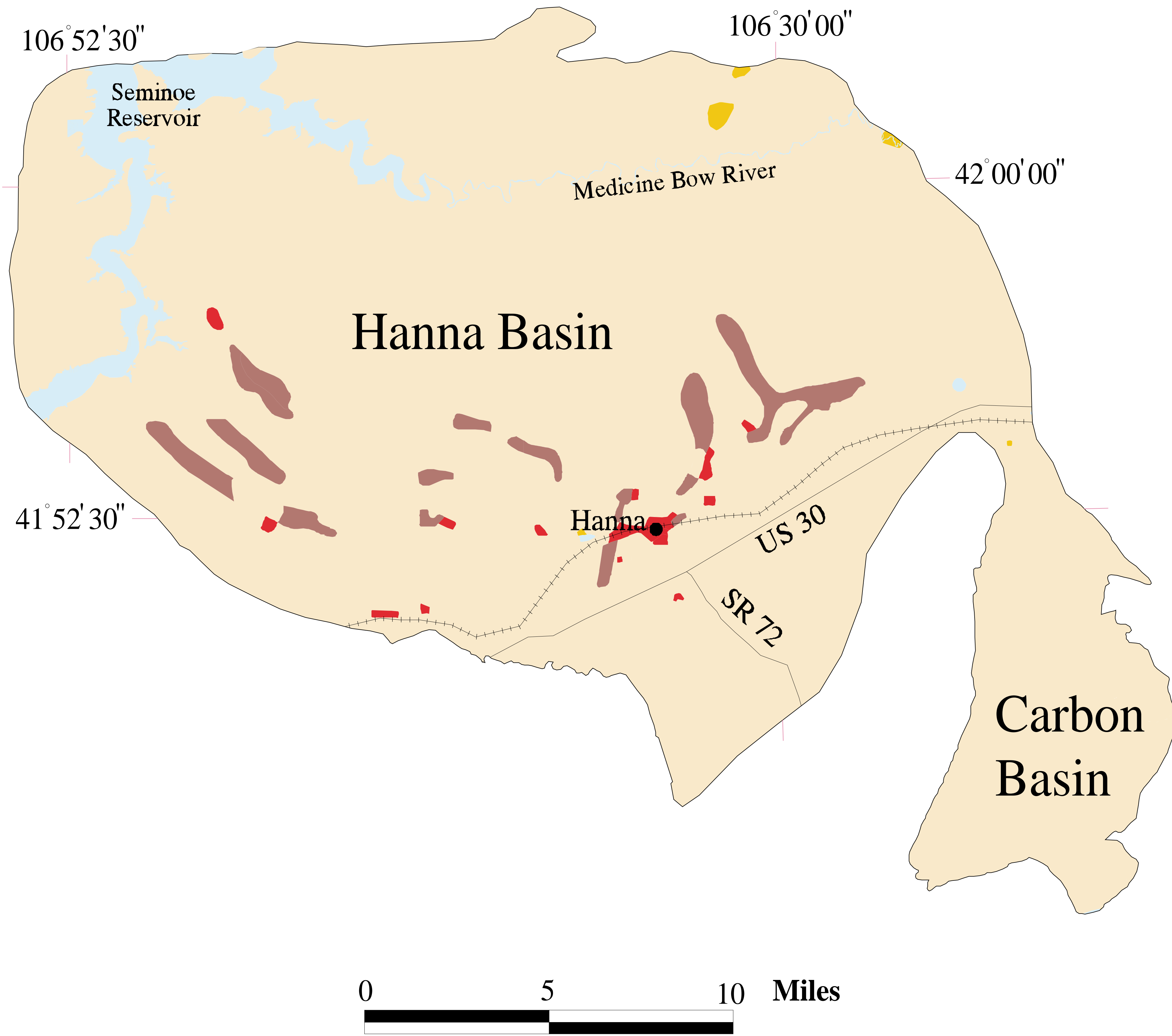
**U.S. Bureau of Land Management**—These are comprised of lands administered by the BLM.

**U.S. Bureau of Reclamation (BOR)**—These are comprised of lands administered by the BOR.

**Private**—This category is composed of all other ownership types.

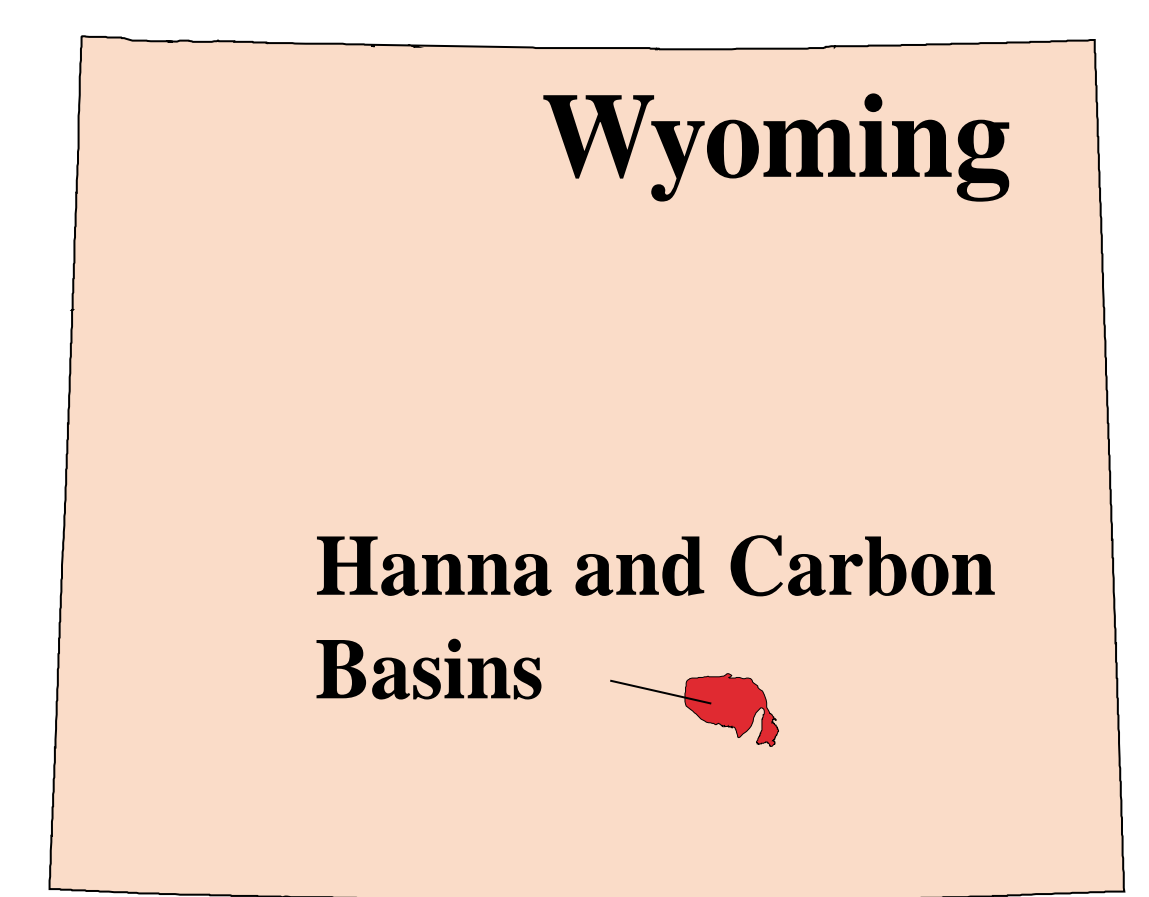
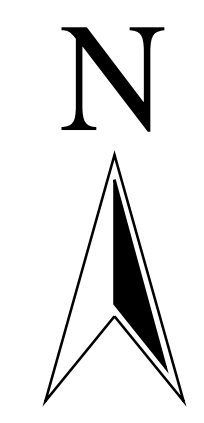
**Water**—Water bodies are identified, but ownership is not designated.

**Figure HM-1. Hanna and Carbon Basins  
Land Use and Land Cover**

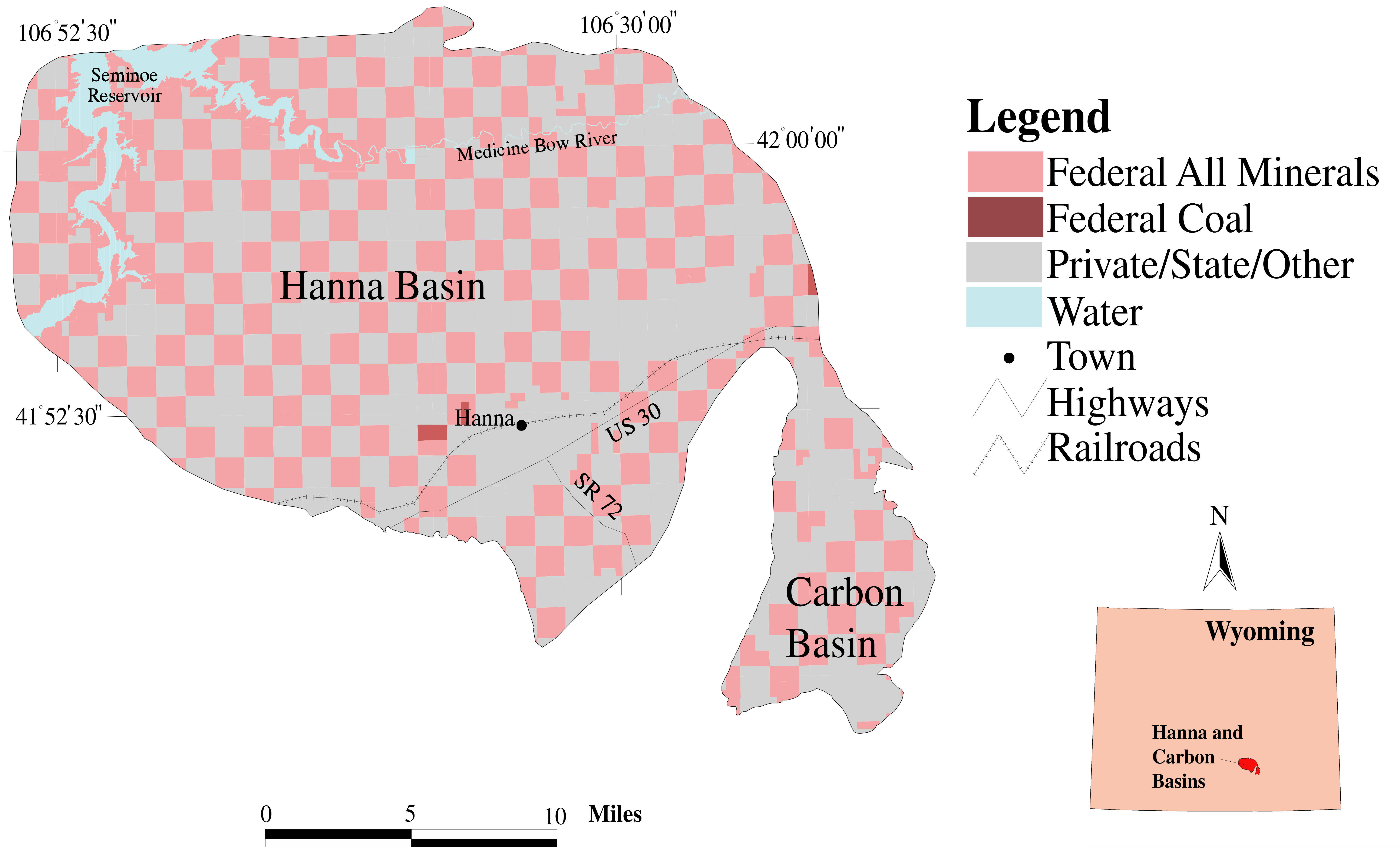


**Legend**

- Agriculture
- Mine Reclamation Areas
- Rangeland
- Urban/Industrial
- Water
- Town
- Highways
- Railroads



**Figure HM- 4. Hanna and Carbon Basins  
Subsurface Ownership**





**Figure HM-3. Hanna and Carbon Basins Surface Ownership**

