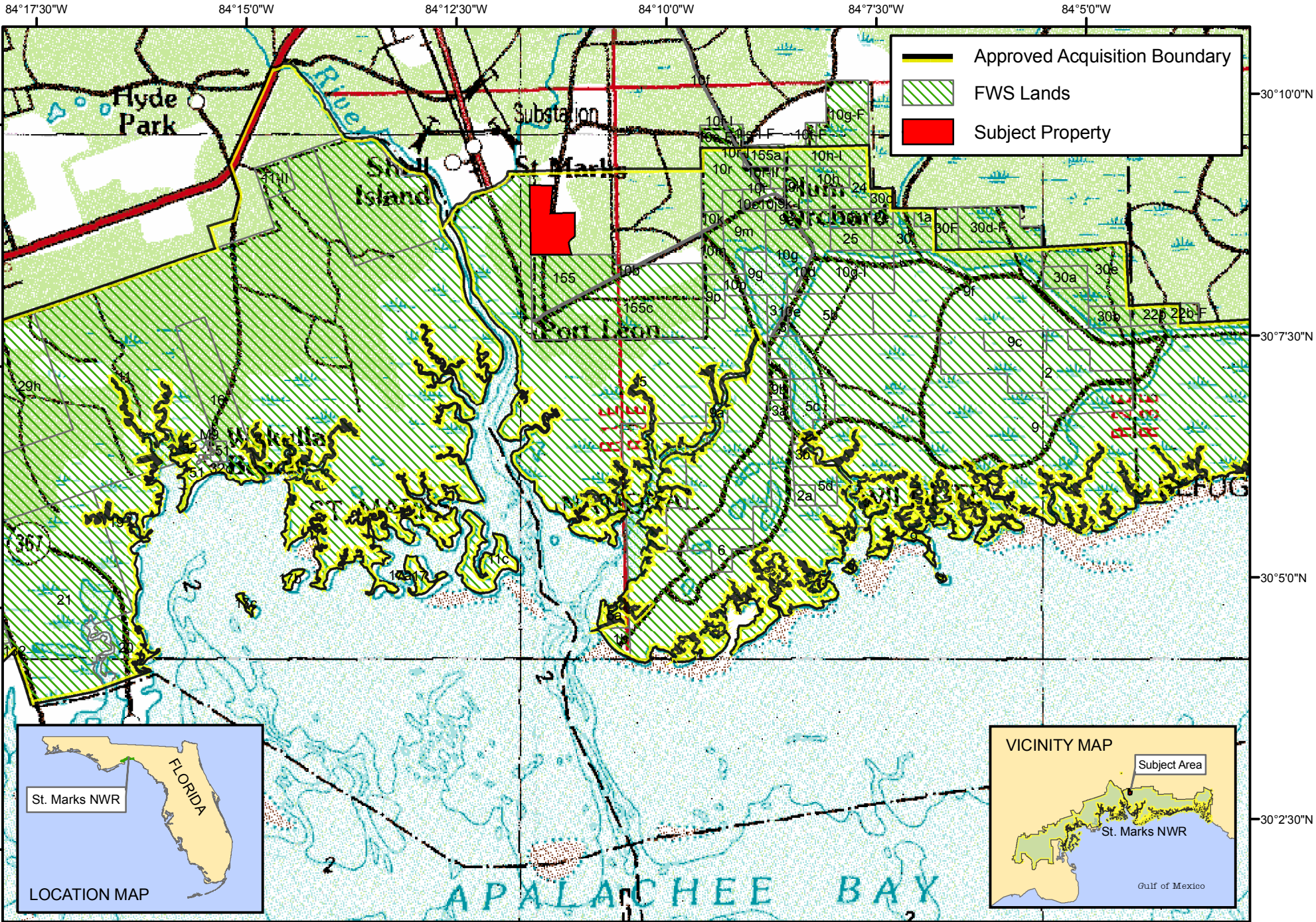





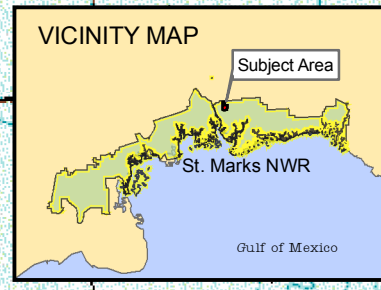
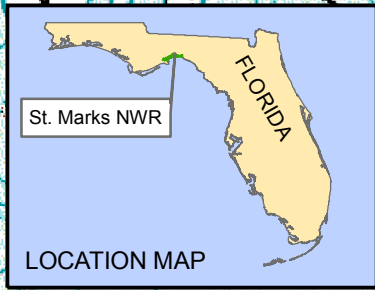


U.S. Fish & Wildlife Service
St. Marks National Wildlife Refuge
 Jefferson, Taylor and Wakulla Counties, Florida

Emergency Funding Request



-  Approved Acquisition Boundary
-  FWS Lands
-  Subject Property



Produced in the Division of Realty
 Atlanta, GA
 Land Status Current to: 4/22/2005
 Base Map Source: USGS DRG 1999

