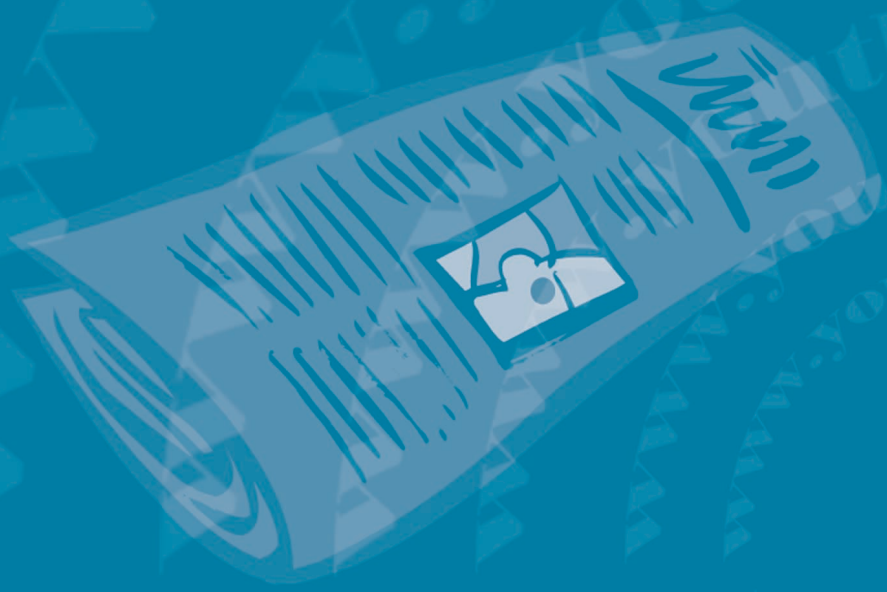


jobs youth may perform

13 & under

babysit
deliver newspapers
work as an actor
or performer



ages 14 & 15



offices
grocery stores
retail stores
restaurants
movie theaters

Any job
not declared
hazardous

mining, logging, meatpacking, roofing, excavation,
demolition, operating motor vehicles or forklifts,
working with saws, explosives or most power
driven machines, radioactive materials



ages 16 & 17



hours youth may work



youth under age 16 may work:
3 hours a day/18 hours a week
in a school week
8 hours a day/40 hours a week
in a non-school week

youth under age 16 must perform work
between 7am and 7pm
except between June 1 and Labor Day,
when evening hours are extended to 9pm

youth over age 16 have no restrictions
on the hours they may work



1.866.487.9243

www.youthrules.dol.gov

Different rules apply to farms, and State laws may have stricter rules.