

# United States Parole Commission



## FY 2008 Congressional Budget Justification

February 5, 2007

**Department of Justice  
United States Parole Commission  
Fiscal Year 2008 Performance Budget  
Table of Contents**

<u>Item</u>	<b>Page</b>
<b>I Overview</b>	
A Introduction.....	2
B Trends, Relevant Issues and Outcomes.....	5
C Full Program Costs.....	6
D Performance Challenges.....	7
<b>II Summary of Program Changes</b> N/A	
<b>III Appropriation Language &amp; Analysis.....</b>	<b>9</b>
<b>IV Decision Unit Justification.....</b>	<b>10</b>
<b>V Exhibits</b>	
A Organization Chart	
B Summary of Requirements	
C Program changes by Decision Unit	
D Resources by DOJ Strategic Goal/Objective	
E Justification for Base Adjustments	
F Crosswalk of 2006 Availability	
G Crosswalk of 2007 Availability	
H Summary of Reimbursable Resources      - N/A	
I Detail of Permanent Positions by Category	
J Financial Analysis of Program Changes	
K Summary of Requirements by Grade	
L Summary of Requirements by Object Class	
M Status of Congressionally Requested Studies, Reports, and Evaluations - N/A	

# **I. Overview for the U.S. Parole Commission**

## **A. Introduction**

For FY 2008, the United States Parole Commission (USPC) requests a total of \$12,194,000, 96 positions (8 attorneys) and 98 FTE.

**Mission.** The mission of the U.S. Parole Commission is to promote public safety and strive for justice and fairness in the exercise of its authority to release and supervise offenders under its jurisdiction. The Commission achieves these goals through a conscientious application of its guidelines to each case, tempered by a willingness to give due regard to individual circumstances. Its guiding principle is to apply the sanction that is consistent with public safety and the appropriate punishment of the offense. In making its determinations, the Commission considers information from a variety of sources, including the pre-sentence report, victim of the offense, sentencing judge, prosecutor, defense attorney, prison officials, and offender.

The United States Parole Commission has jurisdiction over the following types of cases:

- II. All Federal offenders who committed an offense before November 1, 1987;
- III. All D.C. Code offenders;
- IV. Uniform Code of Military Justice Offenders who are confined in a Bureau of Prisons facility;
- V. Transfer treaty cases (U.S. citizens convicted in foreign countries, who have elected to serve their sentence in this country); and
- VI. State Probationers and Parolees in the Federal Witness Protection Program.

**Federal Offenders (offenses committed before November 1, 1987).** The Parole Commission has the responsibility for:

- A. granting or denying parole to federal offenders who committed their offenses before November 1, 1987 and who are not otherwise ineligible for parole;
- B. making determinations regarding the initial conditions of supervision;
- C. modification of the conditions of supervision for changed circumstances;
- D. early discharge from supervision, issuance of a warrant or summons for violation of the conditions of supervision; and
- E. revocation of release for such offenders released on parole or mandatory release supervision.

Supervision in the community is provided by United States Probation Officers.

**D.C. Code Offenders (offenses committed before August 5, 2000).** The Parole Commission has the responsibility for:

- granting or denying parole to D.C. Code offenders who committed their offenses before August 5, 2000 and who are not otherwise ineligible for parole;
- making determinations regarding the initial conditions of supervision;

- modification of the conditions of supervision for changed circumstances;
- early discharge from active supervision, issuance of a warrant or summons for violation of the conditions of supervision; and
- revocation of release for such offenders released on parole or mandatory release supervision.

Supervision in the community is provided by Supervision Officers of the Court Services and Offender Supervision Agency (CSOSA) of the District of Columbia and United States Probation Officers.

**D.C. Code Offenders (offenses committed after August 4, 2000).** The Parole Commission has the responsibility for:

- making determinations regarding the initial conditions of supervision;
- modification of the conditions of supervision for changed circumstances;
- early discharge from supervision;
- issuance of a warrant or summons for violation of the conditions of supervision; and
- revocation of release for D.C. Code offenders who committed their offenses after August 4, 2000 and who are sentenced to a determinate sentence of imprisonment followed by a term of supervised release.

Supervision in the community is provided by Supervision Officers of the Court Services and Offender Supervision Agency of the District of Columbia and United States Probation Officers.

**Uniform Code of Military Justice Offenders.** The Parole Commission has the responsibility for granting or denying parole to parole-eligible Uniform Code of Military Justice offenders who are serving a sentence in a Bureau of Prisons' institution. Concurrent with this jurisdiction, the Commission is also responsible for:

- making determinations regarding the initial conditions of supervision;
- modification of the conditions of supervision for changed circumstances;
- issuance of a warrant or summons for violation of the conditions of supervision; and
- revocation of release for such offenders released on parole supervision.

Supervision in the community for military parolees is provided by United States Probation Officers.

**Transfer-Treaty Cases.** The Parole Commission has the responsibility for conducting hearings and setting release dates for U.S. citizens who are serving prison terms imposed by foreign countries and who, pursuant to treaty, have elected to be transferred to the United States for service of that sentence. This includes:

- offenders who committed their offenses after October 31, 1987. The Parole Commission applies the federal sentencing guidelines promulgated by the United States Sentencing Commission in determining the time to be served in prison before release; and
- offenders who committed their offenses before November 1, 1987. The Parole Commission applies the parole guidelines that are used for parole-eligible federal and military offenders.

**State Probationers and Parolees in Federal Witness Protection Program.** The Parole Commission has the responsibility for making determinations regarding the initial conditions of supervision, modification of the conditions of supervision for changed circumstances, issuance of a warrant or summons for a violation of the conditions of supervision, and revocation of release for certain state probationers and parolees who have been placed in the federal witness protection program. Supervision in the community is provided by United States Probation Officers.

**Organizational Structure.** The Chairman and Commissioners render decisions in National Appeals Board cases; create and maintain a national parole policy; grant or deny parole to all eligible federal and District of Columbia prisoners; and modify parole conditions and/or revoke the parole or mandatory/supervised releases of offenders who have violated the conditions of supervision.

The Executive Office provides management and advisory services to the Commissioners; managers and staff in the areas of human resources management and training; budget and financial management; contracts and procurement; facilities and property management; telecommunications; and security.

The Office of Case Operations conducts parole hearings with federal and D.C. prisoners and parole revocation hearings with parole violators; plans and schedules parole hearing dockets; ensures that victims and witnesses are given an opportunity for input into the parole decision-making process; and administrates the records management program.

The Office of Case Services monitors the progress of prisoners and parolees through pre-release and post-release; prepares and issues warrants and warrant supplements; drafts letters of reprimand; requests and analyzes preliminary interviews; and issues parole certificates.

The Office of Information Technology is responsible for delivering and supporting information technology systems and services; maintaining and reporting statistical workload data and management of the quality control functions.

The Office of the General Counsel advises the Commissioners and staff on interpretation of the agency's enabling statutes; drafts implementing rules and regulations; and assists U.S. Attorney's Offices in defending the Commission against lawsuits brought by prisoners and parolees. The office also oversees responses to requests submitted under the Freedom of Information Act and Privacy Act.

## **B. Trends, Relevant Issues and Outcomes**

The Commission's request for 2008 addresses the following strategic goals that the Attorney General has announced as priorities of the Department of Justice:

### **Strategic Goal 2: Enforce Federal Laws and represent the rights and interests of the American people**

Strategic objective 2.1-- Reduce the threat, incidence and prevalence of violent crime, including crimes against children.

The U.S. Parole Commission has the authority to find by a preponderance of evidence that an offender under USPC supervision has committed another crime (even if the offender was not convicted of that crime by the Courts) and return the offender back to prison.

- Target violent crime committed with a firearm.
- Reduce recidivism among violent offenders by developing risk assessment instruments and guidelines to identify high risk offenders who need to return to incarceration and intense supervision sanctions.
- Establish conditions of release and act swiftly to return offenders to prison when they have demonstrated deviant behavior.
- Promote community safety by enhancing supervision of offenders under supervision in the community who are involved in gang activity, sex offenses, gun-related offenses, and domestic violence.
- Conduct a recidivism study and adjust guidelines for the D.C. population that identify high risk offenders.

### **Strategic Goal 3: Assist State, Local and Tribal efforts to prevent or reduce crime and violence**

Strategic Objective 3.2 -- Break the cycle of illegal drugs and violence through prevention and treatment.

- Work with local law enforcement agencies to increase appearance of officers at Revocation hearings. Develop video presentation for the law enforcement agencies to increase understanding of the role of USPC.
- Work with the D.C. Metropolitan Police Department (MPD) to target parolees and supervised releasees that live in or visit the MPD-designated Hot Spots in the District of Columbia.
- Collaboration with CSOSA: Issue warrants in a timely fashion to remove violent offenders from the Washington, D.C. streets. Conduct hearings that look at intermediate sanctions for offenders and to help prevent behavior (drugs, alcohol) that leads to criminal activities. Conduct USPC Reprimand Sanction hearings to address non-compliant behavior and to demand a commitment to make positive behavioral changes to comply with the conditions of release.

- D.C. Jail and Corrections: Develop better processes to conduct probable cause and revocation hearings for Technical Parole Violators.

Strategic Objective 3.3 -- Uphold the rights of and improve services to America’s crime victims, and promote resolution of racial tension.

- Review all parole release and revocation of release cases to institute a search for victims of violent crime and coordinate this search with the D.C. Superior Court system, Federal Courts, the U.S. Attorney’s office, and the D.C. and federal supervision agencies.
- Build a collaborative community approach to assisting victims and witnesses. Enhance decision-making through cooperation with external partners in criminal justice to ensure that the victim’s input is considered prior to a decision.
- Improve security for victim/witness. Develop policies and procedures to incorporate video conferencing for victim and witness input.

**Strategic Goal 4: Ensure the Fair and Efficient Operation of the Federal Justice System.**

The U.S. Parole Commission makes release decisions for persons convicted of violent crimes and establishes release conditions to ensure that these individuals are supervised in the community to the maximum extent possible.

- supervise, revoke, and release federal and District of Columbia offenders to reduce recidivism and protect the public;
- issue release and revocation decisions within the statutory deadline;
- establish and apply sanctions that are consistent with public safety and the appropriate punishment for crimes involving sex offenders, gangs, crimes of violence with firearms, and domestic violence;
- support reentry;
- coordinate with other public safety agencies; and
- establish and implement guidelines to reduce recidivism.

PART: The USPC program has not yet been subjected to the Program Assessment Rating Tool (PART) process.

**C. Full Program Costs**

The FY 2008 budget request for the United States Parole Commission (USPC) is \$12,194,000; 96 full time permanent positions (8 attorneys) and 98 workyears.

	<u>Positions</u>	<u>Workyears</u>	<u>Amount (\$000s)</u>
FY 2006 Appropriation enacted with rescission	92	95	\$ 10,859
FY 2007 President’s Budget	96	98	11,385
FY 2008:Adjustments to base and Technical Adjustments	0	0	809
	<hr/> 96	<hr/> 98	<hr/> 12,194

## D. Performance Challenges

### External challenges

- In meeting its statutory responsibilities, the Parole Commission continues to face challenges that are complex and evolving. The shift in focus at the Commission has presented the agency with a population of offenders whose characteristics are different from the characteristics of the federal offender population the agency traditionally handled. At the end of fiscal year 2005, more than two-thirds of the nearly 15,000 persons under USPC supervision were persons convicted of violating the District of Columbia Code. For the 12-month period ending March 31, 2006, USPC issued almost five times as many warrants for District of Columbia Code offenders as it issued for federal offenders (2,013 vs. 412). Although the federal offender population is violent, the heinous crimes seen at the federal level are different from the violent crimes seen in the District of Columbia.
- The District of Columbia Metropolitan Police Department (MPD) is increasing their efforts to make communities safer by focusing on the investigation and arrest of offenders committing violent crimes with a cascading impact on the Commission's workload. They reported the following figures for targeted crimes committed in 2005:

Targeted crime	Number of cases reported	Remarks
Violent crime	7,716	70 percent of murders, 41 percent of robberies and 19 percent of aggravated assaults were committed with a firearm.
Sex Offense	193	Convicted rape and sexual assault offenders serving time in State and federal prisons: 73 percent of their victims were under the age of 18, and 58 percent of their victims were aged 12 or younger.
Domestic Violence	11,706	11 percent of all murders were the result of domestic violence & 6 out of 1,000 females age 12 or older were victims of domestic violence.
Gangs	79 gangs 1,500 members	Gang members were involved in rapes, robberies, and assaults.

- The supervised release caseload represents some of the most complex and difficult workload managed by the Commission. The Commission is required to conduct contested revocation hearings to decide whether violations of release have occurred. This may require the Commission to secure the presence and testimony of witnesses. Despite receiving a subpoena, witnesses often fail to appear at the hearings causing them to be rescheduled.

*Virtually all District of Columbia offenders are represented by trial attorneys at these adversarial hearings. These attorneys challenge the Commission on any and all legal, procedural and evidentiary grounds. The opposing attorneys know and understand the complex issues surrounding gang cases, domestic violence cases and sexual assault cases, while the Commission has not had the experience nor the resources to do the same. As a result, the opposing counsel knows more about these issues and the specific facts of their*



individual clients than the Parole Commission does. Responding to such demands is resource intensive and failure to respond adequately can result not only in lawsuits against the Commission but in the unjustified release of an offender.

- All other public safety and criminal justice agencies that the Commission deals with have specialized units for domestic violence, sexual assault, gang and gun violence. *Lack of comparable resources puts the Commission at a disadvantage that could result in lower quality decisions at the risk of public safety.*

### **Internal challenges**

- Concentrated specialized units and training are needed to develop staff expertise regarding the complexity of these cases, factually, legally and with regard to their impact on the victims and on the community. Additionally, we will continue to grapple with producing new rules and procedures for new supervised release cases as well as the continuing federal and District of Columbia parole and revocation cases.
- Ensuring public safety through the Commission's actions will vary depending upon the offender's characteristics and conduct. A condition of supervision that is essential for one offender may not be appropriate for another. Staff expertise in complex criminal cases provides the background and knowledge to document cases, address legal issues, and challenge lawsuits brought by supervised releases. However, current staff does not have the specific expertise or resources to monitor and decide on complex issues surrounding gang cases, domestic violence cases, gun cases and sexual assault cases.
- Timely flow of information and its efficient management are critical components in USPC's ability to execute its mandates effectively. A wide variety of stakeholders and often-complex parole processes make synchronization of activities that lead up to the decision-making a difficult task. Lack of an electronic form of file management forces the Commission to track the files manually, which is time-consuming, inefficient and prevents intergovernmental collaboration with our criminal justice partners.
- As a result of USPC working with our criminal justice partners to promote success in the Reprimand Sanction Hearings Program, USPC has a greater understanding of the need for specialized expertise to develop and implement other sanctions to reduce the offender's risk level in the community. Reprimand Sanction Hearing provide a graduated sanction, short of revocation, that permits the Commission to address non-compliant offender behavior and to encourage a commitment from the offender to make positive behavioral changes to comply with the conditions of release.

### **Appropriation Language and Analysis of Appropriations Language**

For necessary expenses of the United States Parole Commission as authorized by law, \$12,194,000 (Department of Justice Appropriations Act, 2007).

### **Analysis of Appropriation Language**

No substantive changes proposed.

**Decision Unit Justification.**

**A. United States Parole Commission**

<b>U.S. Parole Commission TOTAL</b>	<i>Perm. Pos.</i>	<i>FTE</i>	<i>Amount</i>
2006 Enacted with Rescissions	92	95	\$10,859,000
2006 Supplementals	0	0	0
2006 Enacted w/Rescissiona and Supplementals	92	95	10,859,000
2007 President's Budget (information only)	96	98	11,385,000
2007 Continuing Resolution Level (as reflected in the 2008 President's Budget, information only)	93	96	10,859,000
<b>Total 2007 Estimate (direct only)</b>	<b>96</b>	<b>98</b>	<b>11,385,000</b>
Adjustment to Base and Technical Adjustments		0	809,000
2008 Current Services	96	98	12,194,000
2008 Request	96	98	12,194,000
<b>Total Change 2007-2008</b>	<b>0</b>	<b>0</b>	<b>809,000</b>

**1. Program Description**

The U.S. Parole Commission makes parole release decisions for eligible federal and District of Columbia (D.C.) prisoners, determines the conditions of parole or supervised release, issues warrants and revokes parole and supervised release for violation of the conditions of release. Through the administration of a national parole policy that enables the consistent application of rational guidelines, the Commission contributes to the Department's priority of ensuring public safety through impartial decision-making that provides incentives for good behavior while discouraging recidivist conduct.

**Parole Guidelines:** Parole guidelines structure incarceration and release decision-making and are built around a two-dimensional matrix that considers offense severity and offender risk. For each combination of offense severity and risk, the guidelines indicate a range of time to be served. The Commission may release outside the guideline range if it determines there is good cause for doing so. Inmates are furnished a written notice stating the reason(s) for the Commission's determination and a summary of the information relied upon. The guidelines have played a significant role over the past two decades in reducing sentencing disparity.

- Responsibilities of the U. S. Parole Commission**
- Make parole release decisions
  - Authorize method of release and the condition under which release occurs
  - Issue warrants for violation of supervision
  - Determine probable cause for revocation process
  - Prescribe, modify and monitor compliance with the terms and conditions governing offender's behavior while on parole or mandatory or supervised release
  - Revocation of parole, mandatory or supervised release of offenders
  - Release from supervision those offenders who no longer pose a risk to public safety
  - Promulgate rules, regulations, and guidelines for the exercise of its authority and the implementation of a national parole policy

**PERFORMANCE AND RESOURCE TABLE**

Decision Unit/Program: United States Parole Commission  
 Department of Justice Strategic Goal #2. Enforce Federal Laws and represent the rights and interests of the American people  
 Goal #3. Assist State, Local and Tribal efforts to prevent or reduce crime and violence  
 Goal #4. Ensure the Fair and Efficient Operation of the Federal Justice system

Resources	Final Target		Actual		Projected		Changes		FY 2008 Request	
	FY 2006		FY 2006		FY 2007 President's Budget		Current Services Adjustments			
	FTE	\$0	FTE	\$0	FTE	\$0	FTE	\$0	FTE	\$0
Wkys./Funding(\$ in thousands)	95	\$10,859	79	\$10,814	98	\$11,385	0	\$809	98	\$12,194

**WORKLOAD/OUTPUT**

PERFORMANCE INDICATOR	Type Ind.	FY 2006 Target	FY 2006			FY 2007 President's Budget			Current Services Adjustments			FY 2008 Request		
			FED	DC	Total	FED	DC	Total	FED	DC	Total	FED	DC	Total
<b>HEARING</b>														
a. Initial & Statutory Interim	Output	334	197	137	334	133	82	215	-	(12)	(12)	133	70	203
b. D.C. Rehearings	Output	216	-	216	216	-	155	155	-	-	-	-	155	155
c. Revocation	Output	2,368	375	1,993	2,368	333	2,253	2,586	15	423	438	348	2,676	3,024
d. Probable Cause	Output	1,466	-	1,466	1,466	-	1,539	1,539	-	-	-	-	1,539	1,539
e. Other*	Output	164	89	75	164	83	58	141	-	-	-	83	58	141
<b>Total Hearings</b>	<b>Output</b>	<b>4,548</b>	<b>661</b>	<b>3,887</b>	<b>4,548</b>	<b>549</b>	<b>4,087</b>	<b>4,636</b>	<b>15</b>	<b>411</b>	<b>426</b>	<b>564</b>	<b>4,498</b>	<b>5,062</b>
<b>RE-ENTRY</b>														
a. Warrants	Output	2,588	510	2,078	2,588	422	2,158	2,580	(28)	380	352	394	2,538	2,932
b. Reprimands	Output	1,014	-	1,014	1,014	-	1,049	1,049	-	-	-	-	1,049	1,049
c. Supervised Release	Output	2,974	411	2,563	2,974	301	2,626	2,927	-	-	-	301	2,626	2,927
d. Pre-release review	Output	736	736	-	736	641	-	641	-	-	-	641	-	641
e. Other re-entry actions**	Output	7,042	1,667	5,375	7,042	1,456	4,822	6,278	-	-	-	1,456	4,822	6,278
f. Reopen/modify	Output	1,751	281	1,470	1,751	238	1,517	1,755	274	-	-	512	1,517	2,029
g. Victim Witness Notification	Output	-	-	-	-	807	3,190	3,997	-	-	-	807	3,190	3,997
<b>Total Re-entry</b>		<b>16,105</b>	<b>3,605</b>	<b>12,500</b>	<b>16,105</b>	<b>3,865</b>	<b>15,362</b>	<b>19,227</b>	<b>246</b>	<b>380</b>	<b>352</b>	<b>4,111</b>	<b>15,742</b>	<b>19,853</b>
<b>LEGAL</b>														
a. Legal Cases	Output	350	-	-	350	-	-	350	-	-	-	-	-	350
b. Appeal Decisions	Output	305	-	-	305	-	-	305	-	-	-	-	-	305
<b>Grand total</b>		<b>21,308</b>	<b>4,266</b>	<b>16,387</b>	<b>21,308</b>	<b>4,414</b>	<b>19,449</b>	<b>24,518</b>	<b>261</b>	<b>791</b>	<b>1,052</b>	<b>4,675</b>	<b>20,240</b>	<b>25,570</b>

Definitions of Terms: Rescission-Retardation of a previously set parole date; Statutory Review- Periodic Interim hearings after the initial hearing at 18 mo. or 2 yr. Intervals; Local Revocation-Revocation hearings held at local jails or facilities where the parolee is supervised; Institutional Revocation-Revocation hearings held after the parolee has been returned to BOP custody; Parole on the Record-Parole decisions made without a hearing after a review of the case file.

\* Termination, Transfer Treaty hearings

\*\* Preliminary Interview requests, Parole Termination, Other Administrative Actions

## 2. Performance, Resources and Strategies

Much of the D.C. caseload is driven by requests for warrants as a result of violations of the terms and conditions of parole. In contrast to the federal system where the failure rate is about 20 percent, D.C. parolees have a failure rate of around 50 percent. When a warrant is issued, a request for a preliminary interview follows, and a hearing follows.

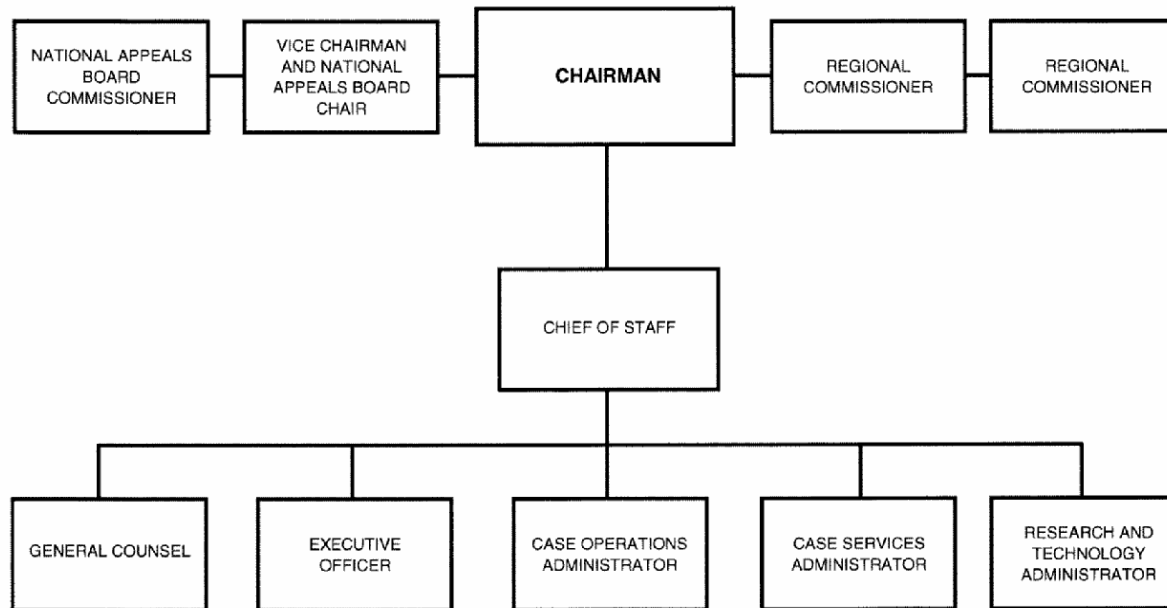
As the supervised release population grows over the next several years, the D.C. revocation hearings (local revocation hearings) will increase dramatically. Local revocation hearings are held at facilities in the locality where a parolee has been arrested, and they require much more work because the hearings are adversarial. An offender may contest the charges and is entitled to representation by an attorney, along with the ability to call witnesses. Additionally, these hearings are more costly to the Commission, because they often involve travel to a remote location, where the examiner is only able to handle a particular case. In an institutional hearing, the parolee has admitted to the charges or been convicted of new criminal activity, and the issues to be heard involve the degree of responsibility and the length of additional incarceration. Institutional hearings are less costly, because the examiner can handle several cases during one docket. The Commission has determined that local revocations are about 2-3 times as labor intensive as institutional hearings. In FY 2008, the Commission projects that the total prisoner and parolee population, federal and D.C., including D.C. supervised releases, will be 13,577. The D.C. population under the Commission's jurisdiction is estimated to be 3,900 prisoners and 5,850 parolees and supervised releases. The following table illustrates changes in the Commission's total caseload from 2000 through 2008:

POPULATION UNDER U.S. PAROLE COMMISSION JURISDICTION					
As of 9/30	Federal Offenders		D.C. Offenders		
	Incarcerated	Parole Supervision	Incarcerated	Supervised	
			Parole Eligible	Parole	SRAA
2000	4,694	4,579	7,500	5,100 est.	...
2001	3,699	4,136	6,391	5,100 est.	...
2002	2,606	3,755	6,021	4,815	47
2003	2,325	3,392	5,430	5,313	278
2004	2,079	3,096	4,888	4,762	748
2005	1,848	2,893	4,213	4,658	1,213
2006 est.	1,700	2,690	4,100	4,060	1,788
2007 est.	1,600	2,502	3,075	3,530	2,300
2008 est.	1,500	2,327	3,900	3,000	2,850

# **EXHIBITS**

**A: Organizational Chart**

**UNITED STATES PAROLE COMMISSION**



Approved by: *Edward F. Reilly, Jr.* Date: 7-13-05  
EDWARD F. REILLY, JR.  
Chairman

## B: Summary of Requirements

### Summary of Requirements United States Parole Commission Salaries and Expenses (Dollars in Thousands)

	FY 2008 President's Budget		
	Prem. Pos.	FTE	Amount
<b>2006 Enacted (with Rescissions, direct only)</b>	<b>92</b>	<b>95</b>	<b>\$10,859</b>
2006 Supplementals			
<b>Total 2006 Appropriation Enacted (with Rescissions and Supplementals)</b>	<b>92</b>	<b>95</b>	<b>10,859</b>
<b>2007 President's Budget (Information Only)</b>	<b>96</b>	<b>98</b>	<b>11,385</b>
2007 Continuing Resolution Level (as reflected in the 2008 President's Budget, information only)	<b>93</b>	<b>96</b>	<b>10,859</b>
<b>Total 2007 Estimate (direct only)</b>	<b>96</b>	<b>98</b>	<b>11,385</b>
2007 Recission Against Balances	....	....	....
2007 Estimate (with Recissions)	96	98	11,385
<b>Adjustments to Base</b>			
Increases:			
2008 pay raise (2.3%)			194
Change in Compensable Days			68
Thrift Savings Plan			23
2007 pay raise annualization (2.2%)			71
DHS Security Charge			134
Federal Health Insurance Premiums			6
GSA Rent (NCR Surcharge)			268
Commercial Rent Adjustment			43
Security Investigations			2
Subtotal Increases	....	....	809
Total Adjustments to Base	....	....	809
Total Adjustments to Base and Technical Adjustments	....	....	809
<b>2008 Current Services</b>	<b>96</b>	<b>98</b>	<b>12,194</b>
<b>2008 Total Request</b>	<b>96</b>	<b>98</b>	<b>12,194</b>
2007 - 2008 Total Change	....	....	809



**Summary of Requirements**  
**United States Parole Commission**  
**Salaries and Expenses**  
**(Dollars in Thousands)**

Estimates by budget activity	2006 Appropriation Enacted w/Rescissions and Supplementals			2007 President's Request			2008 Adjustments to Base and Technical Adjustments			2008 Current Services			2008 Increases			2008 Offsets			2008 Request		
	Pos.	FTE	Amount	Pos.	FTE	Amount	Pos.	FTE	Amount	Pos.	FTE	Amount	Pos.	FTE	Amount	Pos.	FTE	Amount	Pos.	FTE	Amount
U.S. Parole Commission	93	96	\$10,859	96	98	\$11,385	....	....	\$809	96	98	12,194				....	....	\$0	96	98	\$12,194
										....	....	....							....	....	....
										....	....	....							....	....	....
										....	....	....							....	....	....
<b>Total</b>	<b>93</b>	<b>96</b>	<b>10,859</b>	<b>96</b>	<b>98</b>	<b>11,385</b>	<b>....</b>	<b>....</b>	<b>809</b>	<b>96</b>	<b>98</b>	<b>12,194</b>	<b>....</b>	<b>....</b>	<b>....</b>	<b>....</b>	<b>....</b>	<b>....</b>	<b>96</b>	<b>98</b>	<b>12,194</b>
Reimbursable FTE										....									....		
Total FTE		96			98			....		98				....			....		98		
Other FTE:																					
LEAP								....						....			....				
Overtime								....						....			....				
Total Comp. FTE		96			98			....		98				....			....		98		

**C: Program Increases/Offsets By Decision Unit**

**FY 2008 Program Increases/Offsets By Decision Unit**

United States Parole Commission

(Dollars in Thousands)

Program Increases	Location of Description by Decision Unit	Decision Unit 1				Total Increases
		Pos.	Agt./Atty.	FTE	Amount	
						....
						....
		....	....	....	....	....
		....	....	....	....	....
		....	....	....	....	....
<b>Total Program Increases</b>		<b>0</b>	<b>0</b>	<b>0</b>	<b>\$0</b>	<b>\$0</b>
Program Offsets	Location of Description by Decision Unit	Decision Unit 1				Total Offsets
		Pos.	Agt./Atty.	FTE	Amount	
						....
		....	....	....	....	....
		....	....	....	....	....
		....	....	....	....	....
		....	....	....	....	....
		....	....	....	....	....
<b>Total Offsets</b>		<b>0</b>	<b>0</b>	<b>0</b>	<b>\$0</b>	<b>\$0</b>

**D: Resources by DOJ Strategic Goal and Strategic Objective**

**Resources by Department of Justice Strategic Goal/Objective  
United States Parole Commission**  
(Dollars in Thousands)

Strategic Goal and Strategic Objective	2006 Appropriation Enacted w/Rescissions and Supplementals		2007 President's Request		2008 Current Services		2008				2008 Request	
	Direct, Reimb. Other FTE	Direct Amount \$000s	Direct, Reimb. Other FTE	Direct Amount \$000s	Direct, Reimb. Other FTE	Direct Amount \$000s	Increases		Offsets		Direct, Reimb. Other FTE	Direct Amount \$000s
							Direct, Reimb. Other FTE	Direct Amount \$000s	Direct, Reimb. Other FTE	Direct Amount \$000s		
<b>Goal 4: Ensure the Fair and Efficient Operation of the Federal Justice System</b> 4.5 Provide services and programs to facilitate inmates successful reintegration into society, consistent with community expectations and standards.	96	10,859	98	11,385	98	12,194			-	-	98	12,194
<b>Subtotal, Goal 4</b>	<b>96</b>	<b>10,859</b>	<b>98</b>	<b>11,385</b>	<b>98</b>	<b>12,194</b>	-	-	-	-	<b>98</b>	<b>12,194</b>
<b>GRAND TOTAL</b>	<b>96</b>	<b>\$10,859</b>	<b>98</b>	<b>\$11,385</b>	<b>98</b>	<b>\$12,194</b>	-	\$ -	-	\$ -	<b>98</b>	<b>\$12,194</b>

## **E. Justification for Base Adjustments**

### **Justification for Base Adjustments United States Parole Commission**

#### Increases

2008 pay raise. This request provides for a proposed 2.2 percent pay raise to be effective in January of 2007. This increase includes locality pay adjustments as well as the general pay raise. The amount requested, \$194,000, represents the pay amounts for 3/4 of the fiscal year plus appropriate benefits (\$ 134,680 for pay and \$54,320 for benefits).

Annualization of 2007 pay raise. This pay annualization represents first quarter amounts (October through December) of the 2007 pay increase of 2.2 percent included in the 2007 President's Budget. The amount requested \$71,000 represents the pay amounts for 1/4 of the fiscal year plus appropriate benefits (\$51,120 for pay and \$19,880 for benefits).

General Services Administration (GSA) Rent (NCR Surcharge). The NCR Surcharge rate covers costs for shuttle services, shared-use facilities, vacant space, comprehensive guard service at the Robert F. Kennedy Department of Justice Building (RFK/Main), other security costs, and other needs which benefit the department as a whole. The requested increase of \$268,000 represents USPC's share of this cost.

DHS Security Charges. The Department of Homeland Security (DHS) will continue to charge Basic Security and Building Specific Security. The requested increase of \$134,000 is required to meet our commitment to DHS, and cost estimates were developed by DHS.

Direct Lease (Commercial Rent Adjustment). This request provides for an increase of \$43,000 for the United States Parole Commission for office rent paid to a commercial real estate company that owns the Commission's building.

**F: Crosswalk of 2006 Availability**

**Crosswalk of 2006 Availability**  
 United States Parole Commission  
 Salaries and Expenses  
 (Dollars in Thousands)

Decision Unit	FY 2006 Enacted Without Rescissions			Rescissions			Supplementals			Reprogrammings / Transfers			Carryover/ Recoveries			2006 Availability		
	Pos.	FTE	Amount	Pos.	FTE	Amount	Pos.	FTE	Amount	Pos.	FTE	Amount	Pos.	FTE	Amount	Pos.	FTE	Amount
United States Parole Commission	93	96	11,000	(1)	(1)	(141)	....	....	....	....	....	....	....	....	....	93	96	10,859
																....	....	....
																....	....	....
<b>TOTAL</b>	<b>93</b>	<b>96</b>	<b>\$11,000</b>	<b>(1)</b>	<b>(1)</b>	<b>(\$141)</b>	<b>....</b>	<b>....</b>	<b>\$0</b>	<b>....</b>	<b>....</b>	<b>\$0</b>	<b>....</b>	<b>....</b>	<b>\$0</b>	<b>93</b>	<b>96</b>	<b>\$10,859</b>
Reimbursable FTE																		....
Total FTE		96			(1)													96
Other FTE																		....
LEAP																		....
Overtime																		....
Total Compensable FTE		96			(1)													96

Enacted Rescissions. Funds rescinded as required by the Department of Justice Appropriations Act, 2006 (P.L. 109-108) and the Department of Defense Appropriations Act, 2006 (P.L. 109-148).

**G: Crosswalk of 2007 Availability**

**Crosswalk of 2007 Availability**

Name of Budget Account

Salaries and Expenses

(Dollars in Thousands)

Decision Unit	2007 Estimate			Rescissions			Reprogrammings / Transfers			Unobligated Balances Carried Forward /Recoveries			2007 Availability		
	Pos.	FTE	Amount	Pos.	FTE	Amount	Pos.	FTE	Amount	Pos.	FTE	Amount	Pos.	FTE	Amount
United States Parole Commission	96	98	11,385										96	98	11,385
													....	....	....
													....	....	....
													....	....	....
Unobligated Balance Rescission													....	....	....
<b>TOTAL</b>	<b>96</b>	<b>98</b>	<b>11,385</b>	<b>....</b>	<b>....</b>	<b>\$0</b>	<b>....</b>	<b>....</b>	<b>\$0</b>	<b>....</b>	<b>....</b>	<b>\$0</b>	<b>96</b>	<b>98</b>	<b>11,385</b>
Reimbursable FTE															....
Total FTE		98			....			....			....			98	
Other FTE															....
LEAP															....
Overtime															....
Total Compensable FTE		98			....			....			....			98	

Enacted Rescissions. Funds rescinded as required by P.L. \_\_\_\_\_.

**H: Summary of Reimbursable Resources**

**Summary of Reimbursable Resources**  
 United States Parole Commission  
 Salaries and Expenses  
 (Dollars in Thousands)

Collections by Source	2006 Planned			2007 Planned			2008 Request			Increase/Decrease		
	Pos.	FTE	Amount	Pos.	FTE	Amount	Pos.	FTE	Amount	Pos.	FTE	Amount
<b>Not applicable</b>	....	....	....	....	....	....	....	....	....	....	....	....
	....	....	....	....	....	....	....	....	....	....	....	....
	....	....	....	....	....	....	....	....	....	....	....	....
	....	....	....	....	....	....	....	....	....	....	....	....
<b>Budgetary Resources:</b>	....	....	\$0	....	....	\$0	....	....	\$0	....	....	\$0

**I: Detail of Permanent Positions by Category**

**Detail of Permanent Positions by Category**  
 United States Parole Commission  
 Salaries and Expenses

Category	2006 Enacted w/Rescissions and Supps		2007 President's Request		ATBs	2008 Request				
	Total Authorized	Total Reimbursable	Total Authorized	Total Reimbursable		Program Increases	Program Decreases	Total Pr. Changes	Total Authorized	Total Reimbursable
Commissioners(185)	5		5					....	5	
Examiners (101)	15		15			....		....	15	
Attorneys (905)	7		7					....	7	
Clerical and Office Services (300-399)	41		41					....	41	
Accounting and Budget (500-599)	1		1					....	1	
Case Analysts(101)	17		17			....		....	17	
Information Technology	7		7					....	7	
			....					....	....	
								....	....	
								....	....	
								....	....	
								....	....	
								....	....	
								....	....	
								....	....	
								....	....	
								....	....	
								....	....	
								....	....	
								....	....	
								....	....	
<b>Total</b>	<b>93</b>	<b>....</b>	<b>93</b>	<b>....</b>	<b>....</b>	<b>....</b>	<b>....</b>	<b>....</b>	<b>93</b>	<b>....</b>
Headquarters (Washington, D.C.)								....	....	
U.S. Field								....	....	
Foreign Field								....	....	
<b>Total</b>	<b>....</b>	<b>....</b>	<b>....</b>	<b>....</b>	<b>....</b>	<b>....</b>	<b>....</b>	<b>....</b>	<b>....</b>	<b>....</b>



# J: Financial Analysis of Program Changes

## Financial Analysis of Program Changes

United States Parole Commission

Salaries and Expenses

(Dollars in Thousands)

Grades:	Decision Unit 1		Program Changes	
	Inc. 1			
	Pos.	Amount	Pos.	Amount
SES	....	....	....	....
GS-15	....	....	....	....
GS-14	....	....	....	....
GS-13	....	....	....	....
GS-12	....	....	....	....
GS-11	....	....	....	....
GS-10	....	....	....	....
GS-9	....	....	....	....
GS-8	....	....	....	....
GS-7	....	....	....	....
GS-5	....	....	....	....
Total positions & annual amount	....	....	....	....
Lapse (-)	....	....	....	....
Other personnel compensation	....	....	....	....
Total FTE & personnel compensation	....	....	....	....
Personnel benefits	....	....	....	....
Travel and transportation of persons	....	....	....	....
Transportation of things	....	....	....	....
GSA rent	....	....	....	....
Communication, rents, and utilities	....	....	....	....
Printing	....	....	....	....
Advisory and assistance services	....	....	....	....
Other services	....	....	....	....
Purchases of goods & services from Government accounts	....	....	....	....
Research and development contracts	....	....	....	....
Operation and maintenance of equipment	....	....	....	....
Supplies and materials	....	....	....	....
Equipment	....	....	....	....
<b>Total, 2008 program changes requested</b>	<b>0</b>	<b>\$0</b>	<b>0</b>	<b>\$0</b>

**K: Summary of Requirements by Grade**

**Summary of Requirements by Grade**

United States Parole Commission  
Salaries and Expenses

Grades and Salary Ranges	2006 Actual w/Rescissions		2007 President's Request		2008 Request		Increase/Decrease	
	Pos.	Amount	Pos.	Amount	Pos.	Amount	Pos.	Amount
SES, \$109,808 - \$152,000	5		5		5		....	
GS-15, \$107,521 - 139,774	4		6		6		....	
GS-14, \$91,407 - 118,828	22		25		25		....	
GS-13, \$77,353 - 100,554	5		11		11		....	
GS-12, \$65,048 - 84,559	9		12		12		....	
GS-11, \$54,272 - 70,558	7		5		5		....	
GS-10, 49,397 - 64,213	1		1		1		....	
GS-9, \$44,856 - 58,318	1		6		6		....	
GS-8, 40,612 - 52,794	8		9		9		....	
GS-7, \$36,671 - 47,669	5		4		4		....	
GS-6, \$33,000 - 42,898	8		7		7		....	
GS-5, \$29,604 - 38,487	2		2		2		....	
GS-4, \$26,460 - 34,402	....		....		....		....	
GS-3, \$23,571 - 30,645	....		....		....		....	
GS-2, \$21,602 - 27,182	....		....		....		....	
GS-1, \$19,214 - 24,029	....		....		....		....	
<b>Total, appropriated positions</b>	<b>77</b>		<b>93</b>		<b>93</b>		<b>....</b>	
<b>Average SES Salary</b>		\$ ---		\$ ---		\$ ---		
<b>Average GS Salary</b>		\$ ---		\$ ---		\$ ---		
<b>Average GS Grade</b>		....		....		....		

**L: Summary of Requirements by Object Class**

**Summary of Requirements by Object Class**  
 United States Parole Commission  
 Salaries and Expenses  
 (Dollars in Thousands)

Object Classes	2006 Actual		2007 President's Request		2008 Request		Increase/Decrease	
	FTE	Amount	FTE	Amount	FTE	Amount	FTE	Amount
11.1 Direct FTE & personnel compensation	74	5,565	# 91	5,608	91	6,075	....	467
11.3 Other than full-time permanent	5	804	5	863	5	892	....	29
11.5 Total, Other personnel compensation	....	....	....	100	....	100	....	....
<i>Overtime</i>	....	....	....	....	....	....	....	....
<i>Other Compensation</i>	....	....	....	....	....	....	....	....
11.8 Special personal services payments	....	....	....	....	....	....	....	....
<b>Total</b>	<b>79</b>	<b>6,369</b>	<b>96</b>	<b>6,571</b>	<b>96</b>	<b>7,067</b>	<b>....</b>	<b>496</b>
Reimbursable FTE:								
Full-time permanent								
Other Object Classes:								
12.0 Personnel benefits		1,740		1,840		1,979		139
21.0 Travel and transportation of persons		178		158		164		6
22.0 Transportation of things		52		57		59		2
23.2 GSA rent		....		....		402		402
23.2 Rental payment to others		1,230		1,279		1,330		51
23.3 Comm., util., & other misc. charges		205		216		225		9
24.0 Printing and reproduction		7		8		8		0
25.1 Advisory and assistance services		165		....		20		20
25.2 Other services		278		432		449		17
25.3 Purchases of goods & services from Government accounts		365		204		212		8
25.4 Lease expirations		....		....		....		....
25.5 Research and development contracts		....		....		....		....
25.7 Operation and maintenance of equipment		18		15		16		1
26.0 Supplies and materials		61		55		237		182
31.0 Equipment		146		24		25		1
		4,445		4,288		5,127		
<b>Total obligations</b>		<b>10,663</b>		<b>11,385</b>		<b>12,194</b>		<b>\$1,335</b>
Unobligated balance, start of year				(197)		....		
Unobligated balance, end of year		197		197		....		
Recoveries of prior year obligations		....		....		....		
<b>Total requirements</b>		<b>10,860</b>		<b>11,385</b>		<b>12,194</b>		
Relation of Obligation to Outlays:								
Total obligations		10,814		10,859		12,194		
Obligated balance, start of year		....		....		....		
Obligated balance, end of year								
Recoveries of prior year obligations		....		....		....		
Outlays		10,498		11,978				

**M. Status of Congressionally Requested Studies, Reports, and Evaluations**

N/A