



## YOU WANT TO TURN LEFT AFTER THE LIGHT TURNS GREEN. WHAT SHOULD YOU DO?

1. Turn in front of the on-coming cars.
2. Inch left, block traffic and turn when clear.
3. Move into the intersection and turn when clear.
4. Remain behind the crosswalk and turn when clear.

The correct answer is

**3**

*After the light changes, move slowly into the intersection, keep your wheels pointed straight ahead and turn when clear.*



## A DRIVER THAT HAS BEEN DRINKING ALCOHOLIC BEVERAGES WILL USUALLY:

1. Have an accident if he drives.
2. Have much faster reactions.
3. Fall asleep within the hour.
4. Have reduced judgment and vision.

The correct answer is

**4**

*Alcohol affects your vision and your ability to make sound judgments. Time is the only thing that will lessen the effects of alcohol.*



## TO AVOID EMERGENCY SITUATIONS LIKE THIS YOU SHOULD:

1. Keep your left foot near the brake.
2. Travel at a constant speed.
3. Watch traffic clues far ahead.
4. Never travel over 60 miles per hour.

The correct answer is

**3**

*By watching ahead for traffic clues you can often avoid the need for emergency action.*



## IF YOUR RIGHT WHEELS RUN OFF THE PAVEMENT, YOU SHOULD:

1. Turn back onto the pavement at once.
2. Drive onto the shoulder and stop.
3. Slow, keep your right wheels on the shoulder.
4. Stop quickly, keeping your right wheels on the shoulder.

The correct answer is

**3**

*Slow gradually, keeping your right wheels on the shoulder. Steer back sharply when the way is clear.*



**YOU WANT TO TURN LEFT AND SEE THIS RED LIGHT AND GREEN ARROW. WHAT SHOULD YOU DO?**

1. Stop, then turn left.
2. Turn left without stopping only if the way is clear.
3. Go straight ahead if the way is clear.
4. Wait until the light turns green.

The correct answer is

**2**

*That green arrow permits traffic to turn left without stopping only if the way is clear. But be careful!*



**ALL DRIVERS SHOULD KNOW THAT CAMPERS AND TRAILERS CAN BE A SPECIAL HAZARD IN:**

1. Strong winds.
2. Heavy rain.
3. Thick fog.

The correct answer is

**1**

*Strong winds and high speeds can cause trailers to sway. Be alert when meeting or passing trailers.*



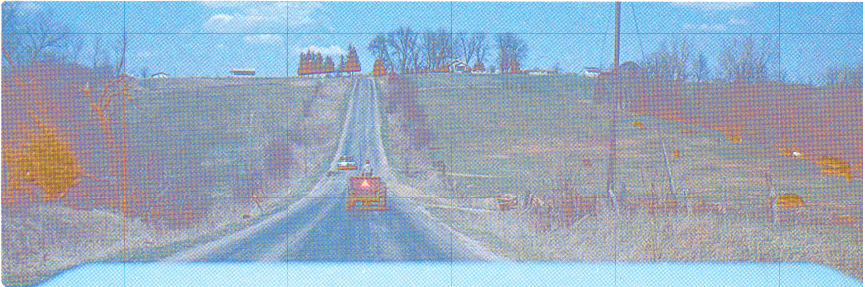
## A DRIVER THAT HAS BEEN DRINKING ALCOHOLIC BEVERAGES WILL USUALLY:

1. Have an accident if he drives.
2. Have better driving skills.
3. Have reduced judgment and vision.

The correct answer is

**3**

*Alcohol affects your vision and your ability to make sound judgments. Time is the only thing that will lessen the effects of alcohol.*



↑ YOUR CAR ↑

## ALL DRIVERS SHOULD KNOW THAT MOST FARM VEHICLES MAY:

1. Be going very slowly.
2. Turn suddenly.
3. Both of the above are correct.

The correct answer is

**3**

*Most farm vehicles are not designed for highway use. They are slow and may turn suddenly even at low speeds.*





## YOU SEE A FLASHING RED LIGHT AND HEAR A SIREN. WHAT SHOULD YOU DO?

1. Cross the intersection and stop close to the curb.
2. Stop where you are.
3. Turn right to get out of the way.

The correct  
answer is

**1**

*You should always stop close to the curb and never block an intersection.*



## IF YOU HAVE AN ACCIDENT, WHAT SHOULD YOU DO?

1. Stay in your car and wait for the police.
2. Stop, help, and give information.
3. Drive to the nearest police station.

The correct  
answer is

**2**

*You must stop, help, and give your name, address and driver's license number. If \$300 or more damage, you must notify the Police Department.*



**THE LIGHT HAS JUST TURNED GREEN BUT THERE IS STILL A PEDESTRIAN IN THE CROSSWALK. WHAT SHOULD YOU DO?**

1. Go ahead since you have the right-of-way.
2. Wait for him to walk past you.
3. Tap the horn and move ahead slowly.

The correct answer is

**2**

*Wait until the pedestrian walks past you.*



**TO KEEP ALERT WHEN ON A LONG TRIP, YOU SHOULD KEEP YOUR EYES:**

1. Moving to observe traffic conditions.
2. Focused on the center line.
3. Concentrated on the car ahead.

The correct answer is

**1**

*Movement of your eyes is the best way to keep alert to the traffic situation around you.*



## WHEN YOU SEE A SIGN SHAPED LIKE THE ONE AT THE CORNER, WHAT SHOULD YOU DO?

1. Go, you have the right-of-way.
2. Stop at the sign.
3. Slow down, be ready to stop.

The correct answer is

**2**

*You must stop and not go until the way is clear.*



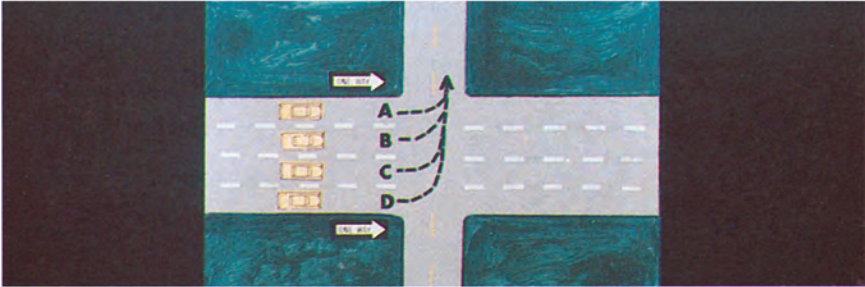
## WHICH CAR HAS STOPPED PROPERLY FOR THE STOP SIGN?

1. Car 'A'.
2. Car 'B'.
3. Car 'C'.
4. Car 'D'.

The correct answer is

**2**

*Car 'B' is properly stopped before the crosswalk.*



**YOU PLAN TO TURN LEFT AT THIS INTERSECTION. WHICH LANE SHOULD YOU BE IN BEFORE TURNING?**

1. Lane 'A'.
2. Lane 'B'.
3. Lane 'C'.
4. Lane 'D'.

The correct answer is

**1**

*You should turn left from Lane 'A'.*



**IF YOU WERE PARKING YOUR CAR NEXT TO THE CURB HERE, WHICH WAY SHOULD YOU TURN YOUR WHEELS?**

1. In any direction.
2. Toward the curb.
3. Straight ahead.
4. Away from the curb.

The correct answer is

**2**

*You should turn your wheels toward the curb so the curb keeps the car from rolling ahead.*





### THE WHITE LINES ON THIS STREET SEPARATE TRAFFIC:

1. And keep cars from passing.
2. And show that it is a one-way street.
3. Moving in the same direction.
4. Moving in opposite directions.

The correct answer is **3**

*Broken white lines are used to separate lanes of traffic moving in the same direction.*



### THE DRIVER AHEAD OF YOU IS SIGNALING THAT HE PLANS TO:

1. Turn right.
2. Turn left.
3. Slow or stop.
4. Slow and that you should pass.

The correct answer is **1**

*He plans to turn right. You are required to signal with your arm or signal lights before slowing, stopping, or turning.*



## THE DOUBLE YELLOW LINE PAINTED ON THIS STREET:

1. Is to keep all cars from passing.
2. Shows that it is a one-way street.
3. Separates traffic moving in the same direction.
4. Separates traffic moving in the opposite directions.

The correct answer is

**4**

*These double yellow lines are used to separate lanes of traffic moving in opposite directions.*



↑ YOUR CAR ↑

## THE DRIVER AHEAD OF YOU IS SIGNALING THAT:

1. He plans to turn right.
2. He plans to turn left.
3. He plans to slow or stop.
4. You should pass.

The correct answer is

**3**

*He plans to slow or stop. You are required to signal with your arm or signal lights before slowing, stopping, or turning.*



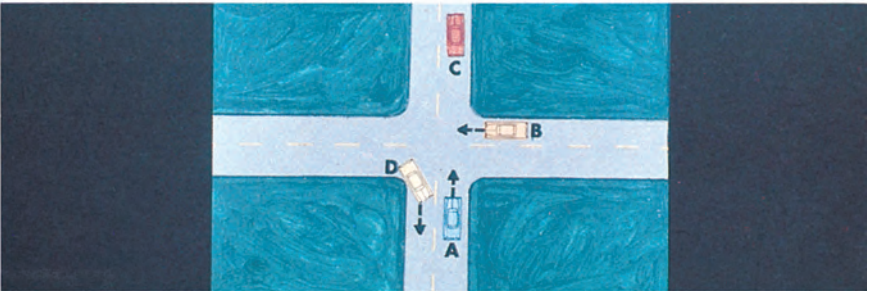
## THE DRIVER AHEAD OF YOU IS SIGNALING THAT HE PLANS TO:

1. Turn right.
2. Turn left.
3. Slow or stop.
4. Slow and that you should pass.

The correct answer is

**2**

*He plans to turn left. You are required to signal with your arm or signal lights before slowing, stopping, or turning.*



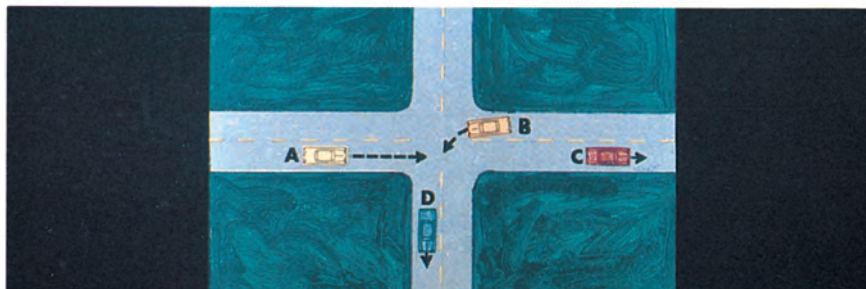
## WHICH DRIVER IS REQUIRED TO YIELD THE RIGHT-OF-WAY?

1. Driver 'A'.
2. Driver 'B'.
3. Driver 'C'.
4. Driver 'D'.

The correct answer is

**1**

*The law requires that Driver 'A' yield to Driver 'B'.*



**DRIVER 'A' PLANS TO GO STRAIGHT AHEAD AND DRIVER 'B' PLANS TO TURN LEFT; WHICH DRIVER IS REQUIRED TO YIELD THE RIGHT-OF-WAY?**

1. Driver 'A'.
2. Driver 'B'.
3. Driver 'C'.
4. Driver 'D'.

The correct answer is

**2**

*The law requires the left-turning Driver 'B' to yield to on-coming Driver 'A'.*



**IF YOU HAVE CAR TROUBLE AND HAVE TO STOP ALONG A HIGHWAY, YOU MUST:**

1. Raise the hood.
2. Have all the wheels off the road.
3. Turn on emergency flashers.

The correct answer is

**2**

*You must have all your wheels off the road so that you do not create a traffic hazard.*



# NOTES

# NOTES

# NOTES

# NOTES



# NOTES

**VEHICLE REGISTRATION OFFICES**

**City and County of Honolulu**

Chinatown Gateway Plaza, 1031 Nuuanu Avenue, 2nd Floor, Phone 532-7700

Hours of Operation . . . . . 7:45 a.m. to 4:15 p.m.

Closed Sat., Sun., and Holidays

Transactions at Satellite Offices:

Ala Moana Shopping Center . . . . . 973-2600

Fort Street Mall . . . . . 532-2500

Kalihi . . . . . 842-0653

Kailua . . . . . 261-8575

Kapolei . . . . . 692-5400

Windward Mall . . . . . 235-4571

Pearlridge Shopping Center (Uptown) . . . . . 483-3405

Wahiawa . . . . . 621-0791

Waianae (limited services) . . . . . 696-6371

Waipahu . . . . . 671-5638

**County of Hawaii**

Hilo, 25 Aupuni Street, Phone 961-8351

Hours of Operation . . . . . 7:45 a.m. to 4:30 p.m.

Closed Sat., Sun., and Holidays

**County of Maui**

Maui Mall, Kahului, Phone 270-7840

Hours of Operation . . . . . 7:45 a.m. to 4:30 p.m.

Closed Sat., Sun., and Holidays

**County of Kauai**

Lihue Civic Center, Kapule Building, 4444 Rice Street, Suite 466, Phone 241-6577

Hours of Operation . . . . . 7:45 a.m. to 4:15 p.m.

Closed Sat., Sun., and Holidays

**RECONSTRUCTED VEHICLE INSPECTION STATIONS**

**City and County of Honolulu**

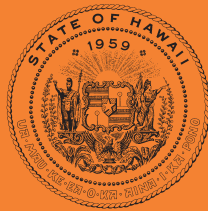
Honolulu, 1112 Kapahulu Avenue

Hours of Operation . . . . . 1:00 p.m. to 3:15 p.m.

Closed Sat., Sun., and Holidays

**Counties of Hawaii, Kauai and Maui**

No reconstructed vehicle inspection rules. County code, state laws and administrative rules concerning safety inspection apply.



Hawaii Drivers' Manual is printed and published by Hagadone Printing Company  
in conjunction with the State Department of Transportation.

