



# Using Data Collection to Strengthen Research Projects

**DOT HS 810 955**

Presented at Lifesavers 2008  
Portland, Oregon

April 14, 2008

**Dennis Utter**

Director

Office of Traffic Records and Analysis

**NCSA**

National Center for Statistics and Analysis  
National Highway Traffic Safety Administration

# National Center for Statistics & Analysis

## Agenda:

NCSA Overview

NCSA's New Web Site and Features

Obtaining Traffic Safety Information

# National Center for Statistics & Analysis

## WHAT WE DO:

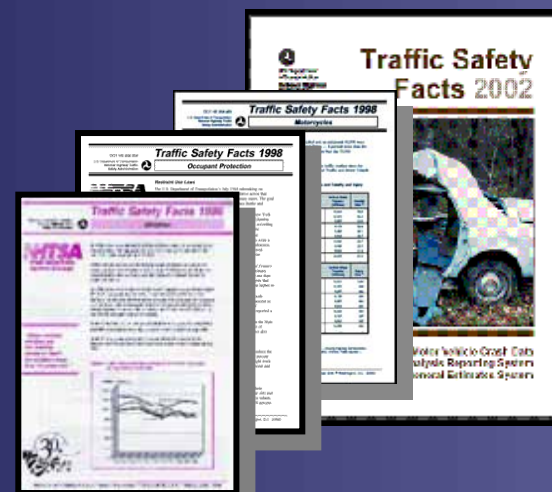
Collect



Analyze



Disseminate



# National Center for Statistics & Analysis

## Data Systems

### Fatality Analysis Reporting System (FARS)

- ALL Fatal Crashes
- 1975 to Present
- **Data Sources**
  - Police Accident Reports (PARs)
  - State Vehicle Registration Files
  - State Driver Licensing Files
  - State Highway Department Data
  - Vital Statistics
  - Death Certificates
  - Coroner/Medical Examiner Reports
  - Hospital Medical Records
  - Emergency Medical Services Reports



# National Center for Statistics & Analysis

## Data Systems

### General Estimates System

- SAMPLE of ALL Crash Severities
- Since 1988
- PAR Data

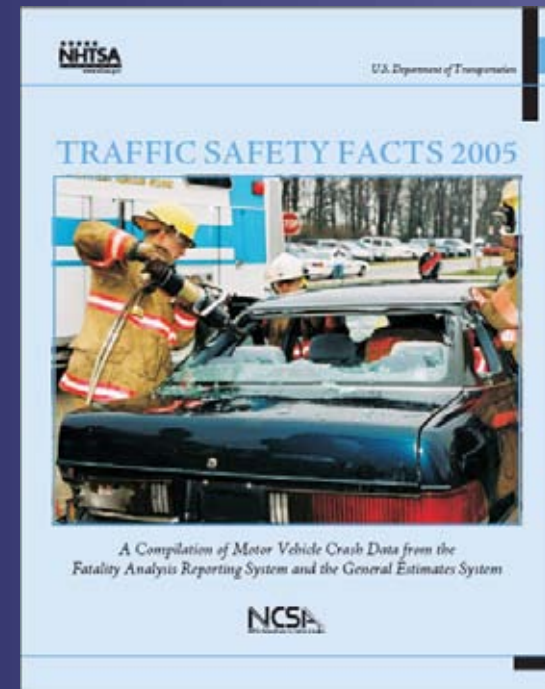
### Crashworthiness Data System

- SAMPLE of ALL Crash Severities
- In-Depth Investigations

# 14 Annual Fact Sheets



- **OVERVIEW FACT SHEET**
  - 10 years of trend data
  - Data on high-interest program areas
- **ALCOHOL STATE ESTIMATES**
- **STATE TRAFFIC DATA**
- **ALCOHOL**
- **OCCUPANT PROTECTION**
- **SPEEDING**
- **MOTORCYCLES**
- **LARGE TRUCKS**
- **SCHOOL BUS**
- **PEDESTRIANS**
- **PEDALCYCLISTS**
- **OLDER POPULATION**
- **YOUNG DRIVER**
- **CHILDREN**





# **NEED DATA?**

**Call: 800-934-8517**

**[www-nrd.nhtsa.dot.gov/CATS](http://www-nrd.nhtsa.dot.gov/CATS)**





National Highway Traffic Safety Administration  
Our Mission: Save lives, prevent injuries, reduce vehicle-related crashes



Home

Traffic Safety

Vehicles/Equipment

Laws/Regulations

**NCSA**

Vehicle Safety Research

What's New: ★ Secretary Peters Launches National Drunk Driving Enforcement Campaign and Encourages

Search NHTSA

  
Information on ...

#### Quick Clicks

Latest News and Updates

Press Room

Newest Studies and Reports

Fuel Economy

Locate a Child Seat Fitting Station

Child Seat "Ease of Use" Ratings

File a Complaint About Your Vehicle or Child Seat

Recalls, Defects and Complaints Databases

Teen Drivers

About NHTSA

Contact NHTSA

#### Top Stories

### Secretary Peters Launches National Drunk Driving Crackdown



The Department launched a national drunk driving enforcement crackdown and appealed to the judicial branch to use all the tools it has available to keep drunk driving offenders off the roads. She also released national and state statistics for alcohol related fatalities in 2006. [Details.](#)

### NHTSA Urges Drivers to Check Tires During Hot Weather



The nation's top highway safety official today cautioned motorists that hot weather and under-inflated tires are a dangerous combination. NHTSA Administrator Nicole Nason unveiled a public service announcement urging drivers to check tire pressure and tread-wear often, but especially during the hot, summer months. [Details.](#)

### What's New, Latest Updates and Features on Our Site

► **Sept. 5:** Secretary Peters Announces Tougher Vehicle Safety Standard To Protect Against



**Drunk Driving National Crackdown**  
If you're over the limit, you're under arrest

Share the Road  
How to promote motorcycle safety awareness



**Safe Summer**  
Cool tips for fun in the sun driving

### Other NHTSA sites

**SaferCar.gov**  
5-star crash test and





Search NHTSA



<< NCSA

### Browse Topics

Latest Releases

NCSA Publications

Available Data

Data Requests

Analysis & Statistics

Crash Research

State Data Program

View Case Data

Regulatory Analysis

Regulatory Evaluation

State Traffic Safety Information (STSI)

Traffic Records

About NCSA

Contact NCSA

Crash  
Research and  
Investigation

Data Collection,  
Statistics and  
Analysis

Improving  
Highway Safety  
for Everyone

## The NEW National Center for Statistics and Analysis website!

The link below will help in making the adjustment to our new format. It explains where the features you remember can be found now.

▶ [Navigating Our New Pages](#)



Crash Research, Traffic Records & Driver Register, Regulatory Evaluation & Analysis, Sharing Information

### More On The Web

▶ [Traffic Records Coordinating Committee](#)

### Related Links

▶ [FARS, State Data Systems, CODES](#)

▶ [NASS, SCI, NMVCCS](#)

▶ [FARS Web-Based Encyclopedia](#)

▶ [Customer Automated Tracking System \(CATS\)](#)

▶ [State Traffic Safety Information \(STSI\)](#)



## NCSA PUBLICATIONS & DATA REQUESTS

[Publications Home](#) | [NCSA Home](#) | [Contact NCSA](#) | [About NCSA](#) | [NHTSA Home](#)


[Publications Home](#)  
[NCSA Home](#)  
[Contact NCSA](#)  
[About NCSA](#)  
[NHTSA Home](#)

- [MANUALS AND DOCUMENTATION - FARS](#)
- [MANUALS AND DOCUMENTATION - NASS-CDS](#)
- [MANUALS AND DOCUMENTATION - NASS-GES](#)
- [POWER POINT PRESENTATIONS](#)
- [REPORTS](#)
- [RESEARCH NOTES](#)
- [TRAFFIC SAFETY FACT SHEETS](#)
- [TRAFFIC SAFETY FACTS ANNUAL REPORT](#)
- [OTHER INFORMATION](#)

Search by Publication Number

DOT-HS-



 **Request Customized Data**

[Submit Request](#)

For Information not contained in the Publications





# NCSA PUBLICATIONS & DATA REQUESTS

[Publications Home](#) | [NCSA Home](#) | [Contact NCSA](#) | [About NCSA](#) | [NHTSA Home](#)

## Request an NCSA Publication

[View Publications by Category](#)

[View Publications by Document Type](#)

- BROCHURES
- CODES REPORTS
- CRASH STATS
- MANUALS AND DOCUMENTATION - FARS
- MANUALS AND DOCUMENTATION - NASS-CDS
- MANUALS AND DOCUMENTATION - NASS-GES
- POWER POINT PRESENTATIONS
- REPORTS
- RESEARCH NOTES
- TRAFFIC SAFETY FACT SHEETS
- TRAFFIC SAFETY FACTS ANNUAL REPORT
- OTHER INFORMATION

Search by Publication Number

DOT-HS-



Center for Statistics and Analysis

## Request Customized Data

[Submit Request](#)

For Information not contained in the Publications



Trusted sites



# NCSA PUBLICATIONS & DATA REQUESTS

[Publications Home](#) | [NCSA Home](#) | [Contact NCSA](#) | [About NCSA](#) | [NHTSA Home](#)

## Request an NCSA Publication

[View Publications by Category](#)



[View Publications by Document Type](#)

- BROCHURES
- CODES REPORTS
- CRASH STATS
- MANUALS AND DOCUMENTATION - FARS
- MANUALS AND DOCUMENTATION - NASS-CDS
- MANUALS AND DOCUMENTATION - NASS-GES
- POWER POINT PRESENTATIONS
- REPORTS
- RESEARCH NOTES
- TRAFFIC SAFETY FACT SHEETS
- TRAFFIC SAFETY FACTS ANNUAL REPORT
- OTHER INFORMATION

Search by Publication Number

DOT-HS-



Center for Statistics and Analysis

## Request Customized Data

[Submit Request](#)

For Information not contained in the Publications



Trusted sites



# VIEW PUBLICATIONS BY CATEGORY

[Publications Home](#) | [NCSA Home](#) | [Contact NCSA](#) | [About NCSA](#) | [NHTSA Home](#)

- 15 Passenger Vans
- Age
- Air Bags
- Alcohol ←
- Annual Assessments
- Belt Use
- Bicyclists/Pedalcyclists
- Brochures/Pamphlets
- CODES
- Cell Phone Use
- Child Safety Seats
- Children
- Crash Worthiness
- Cyclists/Pedacyclists
- Driver Information
- Lives Saved
- Manuals and Documentation
- Month/Day/Time of Day
- Motorcycles
- National Automotive Sampling System (NASS)
- National Occupant Protection Use Surveys (NOPUS)
- Occupant Protection
- Occupants
- Older Population
- Other Information
- Pedestrians
- Race/Ethnicity
- Rates
- Restraints/Safety Belts
- Rollover



Trusted sites

Start

2 Micro...

VA Repti...

2 Wind...

2 Micro...

Home | N...

View Pu...



2:22 PM

# ALCOHOL


[Publications Home](#) | [NCSA Home](#) | [Contact NCSA](#) | [About NCSA](#) | [NHTSA Home](#)

To view a document:

Please click on a document hyperlink

To order publications by Mail:

Please click on the check boxes corresponding to the required documents and press OK

Publication		Document Title	Mail
Number	Year		
810801	2007	2006 ALCOHOL-IMPAIRED DRIVING Traffic Safety Fact Sheet 	
810837	2007	2006 Annual Assessment -- Power Point Presentation	
810755	2007	2006 Early Assessment Projections -- Power Point Presentation	
810809	2007	2006 OVERVIEW Traffic Safety Fact Sheet (Updated March 2008)	
810791	2007	2006 Traffic Safety Annual Assessment -- A Preview	
810821	2007	2006 Traffic Safety Annual Assessment -- Alcohol-Related Fatalities	
810754	2007	Differences in Driver Alcohol Involvement by Age Group and Vehicle Type	
810834	2007	Fatal Two-Vehicle Motorcycle Crashes	
810870	2007	Fatalities Related to Alcohol-Impaired Driving During the Christmas and New Year's Day Holiday Periods	
810637	2007	Passenger Vehicle Occupant Fatalities by Day and Night -- A Contrast	
810632	2007	Traffic Safety Facts Data Summary Booklet 2005	
810616	2006	2005 Alcohol Traffic Safety Fact Sheet	
810617	2006	2005 Bicyclists and Other Cyclists Traffic Safety Fact Sheet	
810618	2006	2005 Children Traffic Safety Fact Sheet	
810619	2006	2005 Large Trucks Traffic Safety Fact Sheet	
810639	2006	2005 Motor Vehicle Traffic Crash Fatality Counts and Estimates of People Injured (Power Point)	
810620	2006	2005 Motorcycle Traffic Safety Fact Sheet	
810623	2006	2005 Overview Traffic Safety Fact Sheet	
810624	2006	2005 Pedestrians Traffic Safety Fact Sheet	
810629	2006	2005 Speeding Traffic Safety Fact Sheet	
810627	2006	2005 State Alcohol Estimates Traffic Safety Fact Sheet	
810628	2006	2005 State Traffic Data Traffic Safety Fact Sheet	
810630	2006	2005 Young Drivers Traffic Safety Fact Sheet	



# Traffic Safety Facts

2006 Data

www.nhtsa.gov

**NHTSA**

DOT HS 810 801  
(Updated March 2008)

## Alcohol-Impaired Driving

*"In 2006, there were 13,470 fatalities in crashes involving a driver with a BAC of .08 or higher – 32 percent of total traffic fatalities for the year."*

### Fatal Crashes and Fatalities Involving Alcohol-Impaired Drivers

In 2006, 13,470 people were killed in alcohol-impaired-driving crashes. These alcohol-impaired-driving fatalities accounted for 32 percent of the total motor vehicle traffic fatalities in the United States.

Traffic fatalities in alcohol-impaired-driving crashes fell by 0.8 percent, from 13,582 in 2005 to 13,470 in 2006. The 13,470 alcohol-impaired-driving fatalities in 2006 were almost the same as compared to 13,451 alcohol-impaired-driving fatalities reported in 1996.

Drivers are considered to be alcohol-impaired when their blood alcohol concentration (BAC) is .08 grams per deciliter (g/dL) or higher. Thus, any fatality occurring in a crash involving a driver with a BAC of .08 or higher is considered to be an alcohol-impaired-driving fatality. The term "driver" refers to the operator of any motor vehicle, including a motorcycle.

Estimates of alcohol-impaired driving are generated using BAC values reported to the Fatality Analysis Reporting System (FARS) and imputed BAC values when they are not reported. The term "alcohol-impaired" does not indicate that a crash or a fatality was caused by alcohol impairment.

The 13,470 fatalities in alcohol-impaired-driving crashes during 2006 represent an average of one alcohol-impaired-driving fatality every 39 minutes.

In 2006, all 50 States, the District of Columbia, and Puerto Rico had by law created a threshold making it illegal per se to drive with a BAC of .08 or higher. Of the 13,470 people who died in alcohol-impaired-driving crashes in 2006, 8,615 (64%) were drivers with a BAC of .08 or higher. The remaining fatalities consisted of 4,090 (30%) motor vehicle occupants and 825 (6%) nonoccupants.

Table 1  
**Fatalities, by Role, in Crashes Involving at Least One Driver With a BAC of .08 or Higher, 2006**

Role	Number	Percent of Total
Driver With BAC=.08+	8,615	64.0%
Passenger Riding w/Driver With BAC=.08+	2,429	18.0%
Subtotal	11,044	82.0%
Occupants of Other Vehicles	1,601	11.9%
Nonoccupants	825	6.1%
Total Fatalities	13,470	100.0%




# NCSA PUBLICATIONS & DATA REQUESTS

[Publications Home](#) | [NCSA Home](#) | [Contact NCSA](#) | [About NCSA](#) | [NHTSA Home](#)

## Request an NCSA Publication

[View Publications by Category](#)

[View Publications by Document Type](#)

- BROCHURES
- CODES REPORTS
- CRASH STATS
- MANUALS AND DOCUMENTATION - FARS
- MANUALS AND DOCUMENTATION - NASS-CDS
- MANUALS AND DOCUMENTATION - NASS-GES
- POWER POINT PRESENTATIONS
- REPORTS
- RESEARCH NOTES 
- TRAFFIC SAFETY FACT SHEETS
- TRAFFIC SAFETY FACTS ANNUAL REPORT
- OTHER INFORMATION

Search by Publication Number

DOT-HS-



Center for Statistics and Analysis

## Request Customized Data

[Submit Request](#)

For Information not contained in the Publications



Trusted sites



# RESEARCH NOTES

[Publications Home](#) | [NCSA Home](#) | [Contact NCSA](#) | [About NCSA](#) | [NHTSA Home](#)

To view a document:

Please click on a document hyperlink

To order publications by Mail:

Please click on the check boxes corresponding to the required documents and press OK

Publication		Document Title	Mail
Number	Year		
810894	2008	<a href="#">Booster Seat Use in 2007</a>	
810897	2008	<a href="#">Child Restraint Use in 2007 -- Demographic Results</a>	
810895	2008	<a href="#">Child Restraint Use in 2007 -- Use of Correct Restraint Types</a>	
810920	2008	<a href="#">Fatalities &amp; Fatality Rates in Alcohol-Impaired Crashes by State, 2005-2006</a>	
810896	2008	<a href="#">Seat Belt Use in 2007 -- Race and Ethnicity Results Among Occupants Traveling with Children</a>	
810921	2008	<a href="#">States with Primary Enforcement Laws Have Lower Fatality Rates (Updated)</a>	
810821	2007	<a href="#">2006 Traffic Safety Annual Assessment -- Alcohol-Related Fatalities</a>	
810796	2007	<a href="#">Booster Seat Use in 2006</a>	
810797	2007	<a href="#">Child Restraint Use in 2006 -- Demographic Results</a>	
810737	2007	<a href="#">Child Restraint Use in 2006 -- Overall Results</a>	
810798	2007	<a href="#">Child Restraint Use in 2006 -- Use of Correct Restraint Types</a>	
810754	2007	<a href="#">Differences in Driver Alcohol Involvement by Age Group and Vehicle Type</a>	
810790	2007	<a href="#">Driver Cell Phone Use in 2006 -- Overall Results</a>	
810742	2007	<a href="#">Motor Vehicle Traffic Crashes as a Leading Cause of Death in the United States, 2004</a>	
810840	2007	<a href="#">Motorcycle Helmet Use in 2007 - Overall Results</a>	
810637	2007	<a href="#">Passenger Vehicle Occupant Fatalities by Day and Night -- A Contrast</a>	
810765	2007	<a href="#">Rear-Seat Belt Use in 2006</a>	
810766	2007	<a href="#">Seat Belt Use in 2006 -- Demographic Results</a>	
810841	2007	<a href="#">Seat Belt Use in 2007 - Overall Results</a>	
810686	2006	<a href="#">Alcohol-Related Fatalities and Fatality Rates by State, 2004-2005</a>	
810598	2006	<a href="#">Driver Alcohol Involvement in Fatal Crashes by Age Group and Vehicle Type</a>	
810568	2006	<a href="#">Motor Vehicle Traffic Crashes as a Leading Cause of Death in the United States, 2003</a>	
810678	2006	<a href="#">Motorcycle Helmet Use in 2006 -- Overall Results</a>	
809979	2006	<a href="#">Passenger Vehicle Occupant Fatality Rates by Type and Size of Vehicle</a>	



# NCSA PUBLICATIONS & DATA REQUESTS

[Publications Home](#) | [NCSA Home](#) | [Contact NCSA](#) | [About NCSA](#) | [NHTSA Home](#)

## Request an NCSA Publication

[View Publications by Category](#)

[View Publications by Document Type](#)

- BROCHURES
- CODES REPORTS
- CRASH STATS
- MANUALS AND DOCUMENTATION - FARS
- MANUALS AND DOCUMENTATION - NASS-CDS
- MANUALS AND DOCUMENTATION - NASS-GES
- POWER POINT PRESENTATIONS
- REPORTS
- RESEARCH NOTES
- TRAFFIC SAFETY FACT SHEETS
- TRAFFIC SAFETY FACTS ANNUAL REPORT
- OTHER INFORMATION

Search by Publication Number

DOT-HS-



## Request Customized Data

[Submit Request](#)

For Information not contained in the Publications

## VIEW BY PUBLICATION NUMBER

[Publications Home](#) | [NCSA Home](#) | [Contact NCSA](#) | [About NCSA](#) | [NHTSA Home](#)

To view a document:  
Please click on a document hyperlink

To order publications by Mail:  
Please click on the check boxes corresponding to the required documents and press OK

Publication		Document Title	Mail
Number	Year		
810741	2007	An Analysis of Motor Vehicle Rollover Crashes and Injury Outcomes	<input type="checkbox"/>

OK

Reset





U.S. Department  
of Transportation  
**National Highway  
Traffic Safety  
Administration**



DOT HS 810 741

March 2007

# An Analysis of Motor Vehicle Rollover Crashes and Injury Outcomes

Published by  
NHTSA's National Center for Statistics and Analysis





# NCSA PUBLICATIONS & DATA REQUESTS

[Publications Home](#) | [NCSA Home](#) | [Contact NCSA](#) | [About NCSA](#) | [NHTSA Home](#)

## Request an NCSA Publication

[View Publications by Category](#)

[View Publications by Document Type](#)

- BROCHURES
- CODES REPORTS
- CRASH STATS
- MANUALS AND DOCUMENTATION - FARS
- MANUALS AND DOCUMENTATION - NASS-CDS
- MANUALS AND DOCUMENTATION - NASS-GES
- POWER POINT PRESENTATIONS
- REPORTS
- RESEARCH NOTES
- TRAFFIC SAFETY FACT SHEETS
- TRAFFIC SAFETY FACTS ANNUAL REPORT
- OTHER INFORMATION

Search by Publication Number

DOT-HS-



## Request Customized Data

[Submit Request](#)

For Information not contained in the Publications



## SPECIAL REQUESTS PAGE

[Publications Home](#) | [NCSA Home](#) | [Contact NCSA](#) | [About NCSA](#) | [NHTSA Home](#)

**CURRENT DATA YEAR IS 2005**

Please enter a detailed description of your requirement specifying the years of data that you are requesting. If no years are specified, the current data year will be provided.

I would like to have historical data for as far back as possible on the number of occupants (children 5 years and younger) killed by restraint use

OK

Reset

## ORDERING INFORMATION

[Publications Home](#) | [NCSA Home](#) | [Contact NCSA](#) | [About NCSA](#) | [NHTSA Home](#)

**The Privacy Act of 1974 - Public Law 93-579, As Amended:** This information is requested pursuant to the authority vested in the National Highway Traffic Safety Act and subsequent amendments. You are under no obligation to provide this information, however, doing so will enable us to respond to your request. This information is used only for the purpose of responding to and tracking your request. It will not be provided to any other source.

Analysis of Seat Belt Use  
and Outcomes in

Mail

Send Method:  Mail  Fax

First Name:

Last Name:  \*

Address 1:  \*

Address 2:

Address 3:

City:  \*

State or Province:  \*

Zip Code:  \*

Country:  \*

Email:    
 Strongly Encouraged

Phone:  \*

Extn:

Fax:

OK

Reset

\* Denotes Required Fields



**NHTSA**  
National Highway Traffic Safety Administration



## RETURN RECEIPT MESSAGE

[Publications Home](#) | [NCSA Home](#) | [Contact NCSA](#) | [About NCSA](#) | [NHTSA Home](#)

Thank you for using our online request system. Your request will be processed in the order it was received.

Data requests can take two weeks or more to process depending on backlog and complexity of the request. If after two weeks (10 business days) you have not received your requested information you may call to inquire about the status of your request on 1-800-934-8517 (this is an automated phone line and is not answered by a person, however, messages are retrieved numerous times a day) or send an email inquiry to [ncsaweb@nhtsa.dot.gov](mailto:ncsaweb@nhtsa.dot.gov).

When calling or emailing for the status of your request, please provide the Tracking number.

**YOUR TRACKING NUMBER IS: 2007.01185**

Done

Trusted sites

Start

Microsoft

VA Profiles

Windows

Microsoft

Return Page

2:08 PM



Search NHTSA



## << NCSA

### Browse Topics

- Latest Releases
- NCSA Publications
- Available Data
- Data Requests
- Analysis & Statistics
- Crash Research
- State Data Program
- View Case Data
- Regulatory Analysis
- Regulatory Evaluation
- State Traffic Safety Information (STSI)
- Traffic Records
- About NCSA
- Contact NCSA



### The NEW National Center for Statistics and Analysis website!

The link below will help in making the adjustment to our new format. It explains where the features you remember can be found now.

▶ [Navigating Our New Pages](#)



Crash Research, Traffic Records & Driver Register, Regulatory Evaluation & Analysis, Sharing Information

### More On The Web

[Traffic Records Coordinating Committee](#)

### Related Links

- [FARS, State Data Systems, CODES](#)
- [NASS, SCI, NMVCCS](#)
- [FARS Web-Based Encyclopedia](#)
- [Customer Automated Tracking System \(CATS\)](#)
- [State Traffic Safety Information \(STSI\)](#)





National Center for Statistics and Analysis  
of the National Highway Traffic Safety Administration

NCSA Large Truck Crash Cause Study

## State Traffic Safety Information For Year 2005

*Quick, easy access to traffic safety facts*



[NHTSA Home Page](#)

[Email Questions and Problems](#)





**National Highway Traffic Safety Administration**  
Our Mission: Save lives, prevent injuries, reduce vehicle-related crashes



## Oregon

Toll Of Motor Vehicle Crashes, 2006

Change Year [2002](#) [2003](#) [2004](#) [2005](#) [2006](#)

Select State

Select County

Data Source: FARS 2002 - 2005 Final and Fars 2006 ARF

2006 Fatality Rates

[Home](#) [Printer Friendly](#) [Click here for Accessible Link](#) [Accessibility](#)

---


### Fatality Rates: Oregon , U.S. and Best State, 2006

2006	Fatalities	Fatality Rate per 100M VMT	Fatality Rate per 100K Population
Oregon	477	1.34	12.89
US	42,642	1.41	14.24
Best State*		0.78	6.36

2006	Fatalities	Fatality Rate per 100M VMT	Fatality Rate per 100K Population
Oregon	477	1.34	12.89
US	42,642	1.41	14.24
Best State*		0.78	6.36

*\*State (or States) With Lowest Rates: Lowest Alcohol and VMT Rates Could Be in Different States*

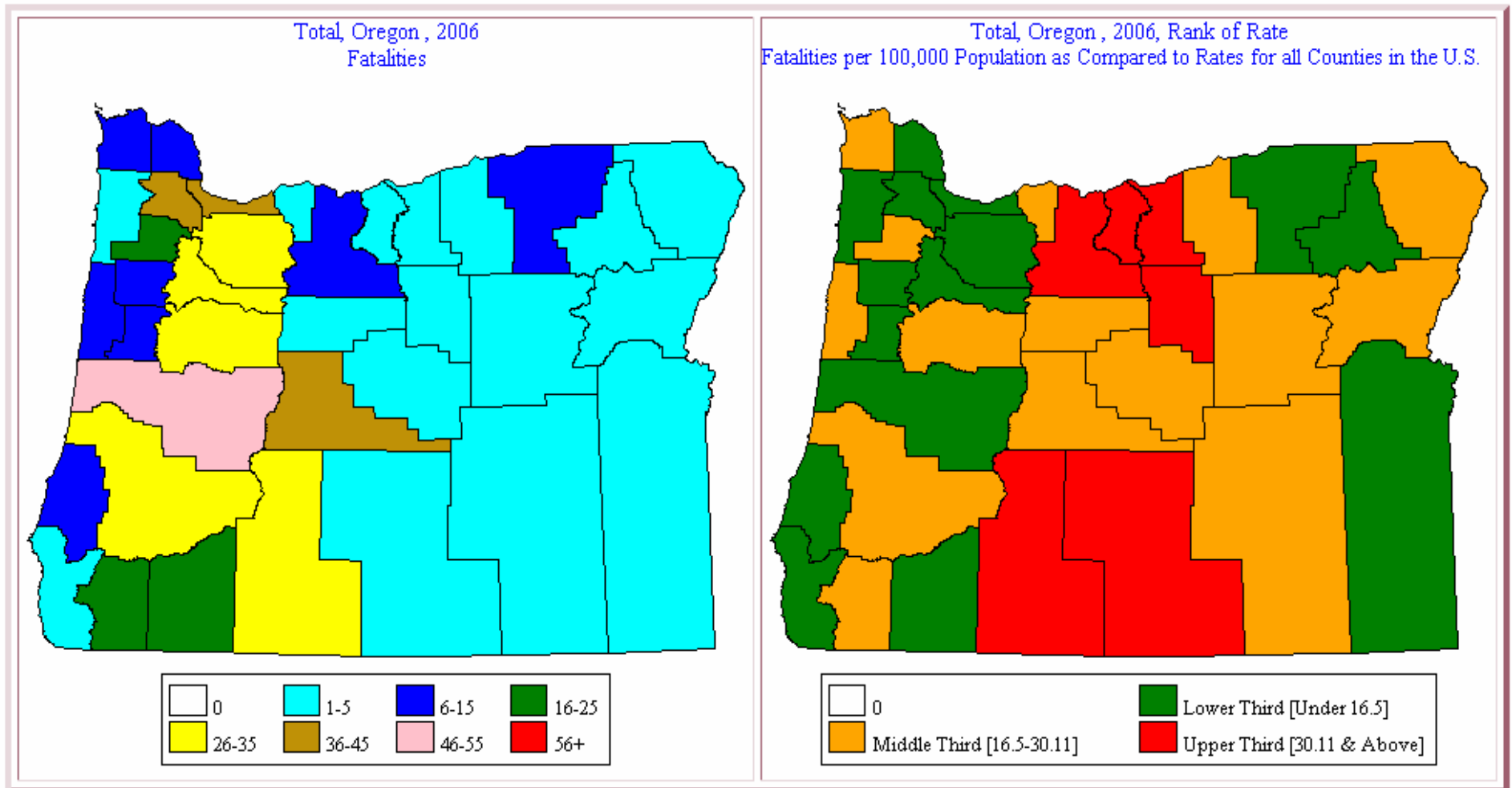
### Trend of Fatalities, 2002 - 2006

Select Below For County Level Report	2002	2003	2004	2005	2006
Total Crashes 	436	512	456	487	477
Alcohol-Related Crashes	180	207	204	177	196
Single Vehicle Crashes	257	286	261	260	283
Non-Junction Crashes	359	418	366	393	403
Within Intersection Crashes	52	61	65	70	48
Intersection-Related Crashes	20	10	9	12	11
Speeding Involved Crashes	135	167	145	161	145
Pedestrians	48	46	43	48	47
Pedalcyclists	6	8	9	11	14
Large Truck Involved Crashes	55	65	53	66	62
Roadway Departure Crashes	308	372	311	328	331
Passenger Car Occupants	195	227	196	191	190
Light Truck/Van Occupants	147	172	147	169	160
Total Occupants (Not Including Motorcyclists)	355	411	365	379	371
Motorcycle Riders	26	44	37	48	44

# State County Maps

Total, 2006 : Fatalities and Fatality Rates per 100,000 Population, By County

(Click on the Map to Access the Underlying Data)





## Fatalities in Alcohol-Related Crashes, 2006

2006	Alcohol-Related Fatalities (BAC=.01+)	Alcohol-Related Fatalities (%)	Fatality Rate per 100M VMT	Fatalities where Highest BAC in Crash was .08+	Percent where Highest BAC in Crash was .08+
Oregon	196	41%	0.55	163	34%
US	17,602	41%	0.58	15,121	35%
Best State*		24%	0.27		21%

*\*State (or States) With Lowest Rates: Lowest Alcohol Rates Could Be in Different States*

[Back to Top](#)

## Fatalities and Fatality Rates in Motor Vehicle Traffic Crashes 2002 - 2006

Crash Year	Total Fatalities	VMT (Millions)	Fatalities Per 100 Million VMT	Total Population	Fatalities Per 100,000 Population	16-20 Year Old Fatalities	16-20 Year Old Population	16-20 Year Old Fatalities Per 100,000 16-20 Year Old Population
2002	436	34,578	1.26	3,523,529	12.37	63	239,820	26.27
2003	512	35,098	1.46	3,561,155	14.38	74	237,797	31.12
2004	456	35,598	1.28	3,589,168	12.70	63	236,336	26.66
2005	487	35,282	1.38	3,638,871	13.38	62	238,628	25.98
2006	477	35,483	1.34	3,700,758	12.89	61	242,546	25.15

### Speeding-Related Fatalities

2006	Number of Fatalities in Speeding-Related Crashes	Percent of Fatalities That Are Speeding-Related
Oregon	145	30%
US	13,543	32%
Best State*		7%

*\*Best Rate: Lowest Rate Attained Across All States*

### Other Statistics of Interest

	Fatalities in Oregon	Percent of Total Fatalities in Oregon	Fatalities in US	Percent of Total Fatalities in US
Within Intersection Crashes	48	10%	7,518	18%
Pedestrian	47	10%	4,784	11%
Pedalcyclists	14	3%	773	2%
Large Truck Involved Crashes	62	13%	4,995	12%
Roadway Departure* Crashes	331	69%	24,806	58%
Passenger Car Occupants	190	40%	17,800	42%
Light Trucks and Vans Occupants	160	34%	12,721	30%
Other/Unknown** Occupants	21	4%	1,571	4%
Total Vehicle Occupants	371	78%	32,092	75%
Motorcycle Riders	44	9%	4,810	11%
Total Nonoccupants***	62	13%	5,740	13%
Total	477		42,642	

# What's New?

- ❖ County Rankings by Number and Rate
  - Comparison With Median Rate for U.S.
  - For example, Cook County Statistics Shown Below

Fatalities, Fatality Rates per 100,000 Population and Ranks Within State, 2005

	2005			
	Fatalities	Rank Within State	Fatality Rate	Rank Within State
Total Fatalities	375	1	7.07	86
Alcohol-Related	171	1	3.22	72
Single Vehicle	210	1	3.96	78
Non-Junction	232	1	4.37	89
Intersection	109	1	2.06	55



## *What's New?*

- ❖ County Fatality Data
- ❖ County Fatality Rate Data (per population)
- ❖ Color-Coded State-County Maps of Fatalities and Rates
- ❖ Ranking of County Within State for Various Fatality Statistics (pedestrians, motorcyclist fatalities, etc.)
- ❖ Timely Web Publishing – On Date of Release of FARS data.



Search NHTSA



### Browse Topics

[Latest Releases](#)[NCSA Publications](#)[Available Data](#)[Data Requests](#)[Analysis & Statistics](#)[Crash Research](#)[State Data Program](#)[View Case Data](#)[Regulatory Analysis](#)[Regulatory Evaluation](#)[State Traffic Safety Information \(STSI\)](#)[Traffic Records](#)[About NCSA](#)[Contact NCSA](#)

## << NCSA



### The NEW National Center for Statistics and Analysis website!

The link below will help in making the adjustment to our new format. It explains where the features you remember can be found now.

► [Navigating Our New Pages](#)



Crash Research, Traffic Records & Driver Register, Regulatory Evaluation & Analysis, Sharing Information

### More On The Web

[Traffic Records Coordinating Committee](#)

### Related Links

[FARS, State Data Systems, CODES](#)

[NACS, SSI, NHTCCS](#)

[FARS Web-Based Encyclopedia](#)

[Customer Automated Tracking System \(CATS\)](#)

[State Traffic Safety Information \(STSI\)](#)





FATALITY ANALYSIS REPORTING SYSTEM  
ENCYCLOPEDIA

- Home
  - Reports
  - Query
  - Publications
  - Help
- Trends
  - Crashes
  - Vehicles
  - People
  - States
- Time
  - Location
  - Circumstances
  - Alcohol

**Fatal Crashes by Crash Type and Relation to Roadway - State : USA, Year : 2006**

SELECT REPORT CRITERIA: STATE:  YEAR:  [VIEW](#)

OUTPUT OPTIONS: [EXPORT \(TXT\)](#) [EXPORT \(XLS\)](#)

Crash Type	Relation to Roadway					Total
	On Roadway	Off Roadway	Shoulder	Median	Other/Unknown	
Single Vehicle	6,451	12,327	2,490	1,018	425	22,711
Multiple Vehicles	15,075	288	251	191	72	15,877
<b>TOTAL</b>	<b>21,526</b>	<b>12,615</b>	<b>2,741</b>	<b>1,209</b>	<b>497</b>	<b>38,588</b>

**Fatal Crashes by Relation to Junction and Traffic Control Device - State : USA, Year : 2006**

SELECT REPORT CRITERIA: STATE:  YEAR:  [VIEW](#)

OUTPUT OPTIONS: [EXPORT \(TXT\)](#) [EXPORT \(XLS\)](#)

Relation to Junction	Traffic Control Device				Total
	None	Traffic Signal	Stop Sign	Other/Unknown	
Non-Junction	25,856	109	208	1,676	27,849
Junction - Intersection	1,583	2,264	2,723	284	6,854
Junction - Intersection Related	549	476	334	78	1,437
Other/Unknown	1,760	66	79	543	2,448
<b>TOTAL</b>	<b>29,748</b>	<b>2,915</b>	<b>3,344</b>	<b>2,581</b>	<b>38,588</b>





FATALITY ANALYSIS REPORTING SYSTEM  
ENCYCLOPEDIA

2000

- Home
  - Reports
  - Query
  - Publications
  - Help
- Trends
  - Crashes
  - Vehicles
  - People
  - States
- Time
  - Location
  - Circumstances
  - Alcohol

Fatal Crashes by Crash Type and Relation to Roadway - State : USA, Year : 2000

SELECT REPORT CRITERIA: STATE: USA YEAR: 2000 VIEW

OUTPUT OPTIONS: EXPORT (TXT) EXPORT (XLS)

Crash Type	Relation to Roadway				Total
	On Roadway	Off Roadway	Shoulder	Median	
Single Vehicle	6,286	11,809	1,850	922	21,117
Multiple Vehicles	15,721	288	209	160	
<b>TOTAL</b>	<b>22,007</b>	<b>12,097</b>	<b>2,059</b>	<b>1,082</b>	<b>37,526</b>

- USA
- Alabama
- Alaska
- Arizona
- Arkansas
- California
- Colorado
- Connecticut
- Delaware
- District of Columbia
- Florida

Fatal Crashes by Relation to Junction and Traffic Control Device - State : USA, Year : 2000

SELECT REPORT CRITERIA: STATE: USA YEAR: 2000 VIEW

OUTPUT OPTIONS: EXPORT (TXT) EXPORT (XLS)

Relation to Junction	Traffic Control Device				Total
	None	Traffic Signal	Stop Sign	Other/Unknown	
Non-Junction	25,852	45	224	1,020	27,141
Junction - Intersection	1,829	2,260	2,942	174	7,205
Junction - Intersection Related	582	457	231	49	1,319
Other/Unknown	1,379	40	64	378	1,861
<b>TOTAL</b>	<b>29,642</b>	<b>2,802</b>	<b>3,461</b>	<b>1,621</b>	<b>37,526</b>



FATALITY ANALYSIS REPORTING SYSTEM  
ENCYCLOPEDIA

California

- Home
  - Reports
  - Query
  - Publications
  - Help
- Trends
  - Crashes
  - Vehicles
  - People
  - States
- Time
  - Location
  - Circumstances
  - Alcohol

Fatal Crashes by Crash Type and Relation to Roadway - State : California, Year : 2000

SELECT REPORT CRITERIA: STATE:  YEAR:  [VIEW](#)

OUTPUT OPTIONS: [EXPORT \(TXT\)](#) [EXPORT \(XLS\)](#)

Crash Type	Relation to Roadway					Total
	On Roadway	Off Roadway	Shoulder	Median	Other/Unknown	
Single Vehicle	775	879	123	147	46	1,970
Multiple Vehicles	1,263	45	14	48	8	1,378
<b>TOTAL</b>	<b>2,038</b>	<b>924</b>	<b>137</b>	<b>195</b>	<b>54</b>	<b>3,348</b>

Fatal Crashes by Relation to Junction and Traffic Control Device - State : California, Year : 2000

SELECT REPORT CRITERIA: STATE:  YEAR:  [VIEW](#)

OUTPUT OPTIONS: [EXPORT \(TXT\)](#) [EXPORT \(XLS\)](#)

Relation to Junction	Traffic Control Device				Total
	None	Traffic Signal	Stop Sign	Other/Unknown	
Non-Junction	2,222	8	22	151	2,403
Junction - Intersection	68	190	219	6	483
Junction - Intersection Related	69	141	55	16	281
Other/Unknown	147	5	2	27	181
<b>TOTAL</b>	<b>2,506</b>	<b>344</b>	<b>298</b>	<b>200</b>	<b>3,348</b>



FATALITY ANALYSIS REPORTING SYSTEM  
ENCYCLOPEDIA

- Home
  - Reports
  - Query
  - Publications
  - Help
- Trends
  - Crashes
  - Vehicles
  - People
  - States
- Time
  - Location
  - Circumstances
  - Alcohol

**Fatal Crashes by Crash Type and Relation to Roadway - State : California, Year : 2000**

SELECT REPORT CRITERIA: STATE:  YEAR:  [VIEW](#)

OUTPUT OPTIONS: [EXPORT \(TXT\)](#) [EXPORT \(XLS\)](#)

Crash Type	Relation to Roadway					Total
	On Roadway	Off Roadway	Shoulder	Median	Other/Unknown	
Single Vehicle	775	879	123	147	46	1,970
Multiple Vehicles	1,263	45	14	48	8	1,378
<b>TOTAL</b>	<b>2,038</b>	<b>924</b>	<b>137</b>	<b>195</b>	<b>54</b>	<b>3,348</b>

**Fatal Crashes by Relation to Junction and Traffic Control Device - State : California, Year : 2000**

SELECT REPORT CRITERIA: STATE:  YEAR:  [VIEW](#)

OUTPUT OPTIONS: [EXPORT \(TXT\)](#) [EXPORT \(XLS\)](#)

Relation to Junction	Traffic Control Device				Total
	None	Traffic Signal	Stop Sign	Other/Unknown	
Non-Junction	2,222	8	22	151	2,403
Junction - Intersection	68	190	219	6	483
Junction - Intersection Related	69	141	55	16	281
Other/Unknown	147	5	2	27	181
<b>TOTAL</b>	<b>2,506</b>	<b>344</b>	<b>298</b>	<b>200</b>	<b>3,348</b>

FATALITY ANALYSIS REPORTING SYSTEM  
ENCYCLOPEDIA



Home

Reports

Query

Publications

Help

Trends

Crashes

Vehicles

People

States

Crashes and All Victims

Occupants

Pedestrians

Alcohol

Fatalities and Fatality Rates

Laws

2006 Traffic Fatalities by STATE and Percent Change from 2005 - State : USA

SELECT REPORT CRITERIA:

STATE: USA

YEAR: 2006

VIEW

OUTPUT OPTIONS:

EXPORT (TXT)

EXPORT (XLS)

State	2006	2005	Percent Change
<a href="#">Alabama</a>	1,208	1,148	5
<a href="#">Alaska</a>	74	73	1
<a href="#">Arizona</a>	1,288	1,179	9
<a href="#">Arkansas</a>	665	654	2
<a href="#">California</a>	4,236	4,333	-2
<a href="#">Colorado</a>	535	606	-12
<a href="#">Connecticut</a>	301	278	8
<a href="#">Delaware</a>	148	133	11
<a href="#">District of Columbia</a>	37	48	-23
<a href="#">Florida</a>	3,374	3,518	-4
<a href="#">Georgia</a>	1,693	1,729	-2
<a href="#">Hawaii</a>	161	140	15
<a href="#">Idaho</a>	267	275	-3
<a href="#">Illinois</a>	1,254	1,363	-8
<a href="#">Indiana</a>	899	938	-4
<a href="#">Iowa</a>	439	450	-2
<a href="#">Kansas</a>	468	428	9
<a href="#">Kentucky</a>	913	985	-7





FATALITY ANALYSIS REPORTING SYSTEM  
ENCYCLOPEDIA

- Home
  - Reports
  - Query
  - Publications
  - Help
- Trends
  - Crashes
  - Vehicles
  - People
  - States
- Crashes and All Victims
  - Occupants
  - Pedestrians
  - Alcohol
  - Fatalities and Fatality Rates
  - Laws

2006 Traffic Fatalities by COUNTY and Percent Change from 2005 - State : California

SELECT REPORT CRITERIA:

STATE:  YEAR:  [VIEW](#)

OUTPUT OPTIONS:

[EXPORT \(TXT\)](#) [EXPORT \(XLS\)](#)

County	2006	2005	Percent Change
Blank	0	0	-
NOT APPLICABLE (000)	0	0	-
ALAMEDA (1)	96	105	-9
ALPINE (3)	4	3	33
AMADOR (5)	13	19	-32
BUTTE (7)	34	35	-3
CALAVERAS (9)	7	12	-42
COLUSA (11)	6	10	-40
CONTRA COSTA (13)	91	77	18
DEL NORTE (15)	15	10	50
EL DORADO (17)	40	23	74
FRESNO (19)	155	164	-5
GLENN (21)	12	7	71
HUMBOLDT (23)	21	20	5
IMPERIAL (25)	42	48	-13
INYO (27)	18	11	64
KERN (29)	202	178	13
KINGS (31)	44	47	-6



FATALITY ANALYSIS REPORTING SYSTEM  
ENCYCLOPEDIA

- [Home](#)
  - [Reports](#)
  - [Query](#)
  - [Publications](#)
  - [Help](#)
- [Trends](#)
  - [Crashes](#)
  - [Vehicles](#)
  - [People](#)
  - [States](#)
- [Crashes and All Victims](#)
  - [Occupants](#)
  - [Pedestrians](#)
  - [Alcohol](#)
  - [Fatalities and Fatality Rates](#)
  - [Laws](#)

**Status of State Motorcycle Helmet Use Requirements - Year : 2005**

SELECT REPORT CRITERIA: YEAR:  [VIEW](#)

State	Original Law	Subsequent Action, Date(s) And Current Status
AL	11/06/67	Helmet use required for all riders.
AK	01/01/71	Repealed effective 06/23/76 for operators age 18 and over.
AZ	01/01/69	Repealed effective 05/27/76 for age 18 and over.
AR	06/29/67	Repealed effective 07/31/97 for age 21 and over.
CA	01/01/85	Reinstated effective 01/01/92 for all.
CO	07/01/69	Repealed effective 05/23/77.
CT	10/01/67	Repealed effective 06/01/76. Reinstated effective 01/01/90 for under age 18.
DE	06/21/68	Repealed effective 06/10/78 for age 19 and over. All riders must have helmet in their possession. Helmet required effective 07/17/84 for instruction permit holders.
DC	02/11/70	Helmet use required for all riders.
FL	09/13/67	Repealed effective 07/01/00 for age 21 and over if covered by insurance of at least \$10,000 in medical benefits.
GA	07/01/69	Helmet use required for all riders.
HI	06/04/67	Repealed effective 06/07/77 for age 18 and over.
ID	01/01/68	Repealed effective 03/29/78 for age 18 and over.
IL	07/01/67	Helmet law effective 05/28/69 ruled unconstitutional by State Supreme Court.
IN	07/26/67	Repealed effective 09/01/77. Reinstated effective 01/01/84 for under age 18.
IA	09/01/75	Repealed effective 07/01/76.
KS	07/01/67	Repealed effective 07/01/70 for age 21 and over. Reinstated effective 07/01/72 for all. Repealed effective 07/01/76 for age 16 and over. Reinstated effective 07/01/79 for ages 16 and 17.



Home

Reports

Query

Publications

Help

Trends Crashes Vehicles People States  
Crashes and All Victims Occupants Pedestrians Alcohol Fatalities and Fatality Rates Laws

Status of State Motorcycle Helmet Use Requirements - Year : 2005

SELECT REPORT CRITERIA:

YEAR: 2005

VIEW

State	Original Law	Subsequent Action, Date(s) And Current Status
AL	11/06/67	Helmet use required for all riders.
AK	01/01/71	Repealed effective 06/23/76 for operators age 18 and over.
AZ	01/01/69	Repealed effective 05/27/76 for age 18 and over.
AR	06/29/67	Repealed effective 07/31/97 for age 21 and over.
CA	01/01/85	Reinstated effective 01/01/92 for all.
CO	07/01/69	Repealed effective 05/23/77.
CT	10/01/67	Repealed effective 06/01/76. Reinstated effective 01/01/90 for under age 18.
DE	06/21/68	Repealed effective 06/10/78 for age 19 and over. All riders must have helmet in their possession. Helmet required effective 07/17/84 for instruction permit holders.
DC	02/11/70	Helmet use required for all riders.
FL	09/13/67	Repealed effective 07/01/00 for age 21 and over if covered by insurance of at least \$10,000 in medical benefits.
GA	07/01/69	Helmet use required for all riders.
HI	06/04/67	Repealed effective 06/07/77 for age 18 and over.
ID	01/01/68	Repealed effective 03/29/78 for age 18 and over.
IL	07/01/67	Helmet law effective 05/28/69 ruled unconstitutional by State Supreme Court.
IN	07/26/67	Repealed effective 09/01/77. Reinstated effective 01/01/84 for under age 18.
IA	09/01/75	Repealed effective 07/01/76.
KS	07/01/67	Repealed effective 07/01/70 for age 21 and over. Reinstated effective 07/01/72 for all. Repealed effective 07/01/76 for age 16 and over. Reinstated effective 07/01/79 for ages 16 and 17.
KY	06/13/68	Repealed effective 07/15/98 for age 21 and over provided operator has held motorcycle license for 1 year and has provided proof of health insurance when registering motorcycle. Health insurance requirement repealed effective 07/04/00.

### Query - Step 1: Choose a Year

Select a Query Year:

2006

Submit

To begin building a query, select a year from the drop-down list above, and click the 'Submit' button.

The Fatality Analysis Reporting System (FARS) contains data on all vehicle crashes in the United States that occur on a public roadway and involve a fatality. This FARS Query System provides interactive public access to fatality data through this web interface.




Due to the complexities within the FARS data, users cannot query across multiple years. If you are interested in trend or cross year information, check out the Trend Reports.

The exercises and final report links listed below point to PDF documents, and require the use of the free Adobe Reader. Links will open in a new browser window or tab.

➤ If you would like additional training on using this query system, try some of the exercises below.

-  [Univariate Report Exercises](#)
-  [Cross Tab Report Exercises](#)
-  [Case Listing Report Exercise](#)

➤ If you would like to see the final reports, click links below.

-  [Univariate Tabulation Reports](#)
-  [Cross Tabulation Reports](#)
-  [Case Listing Reports](#)

To download the latest version of the Adobe Reader, click the "Get Adobe Reader" image below.







Home

Reports

Query

Publications

Help

Query - Step 2: Choose Variables to Use

Check here to select all fields, or individually check the fields that are of interest to you below.

Submit

Clear Form

Choose all the data fields you are interested in by clicking in the check box next to the field name. A check mark will appear to indicate that the field is selected. To de-select a field, click on the check mark again. To clear all selections, click on the Clear Form button. Once you have completed your selections, click on the Submit button.

\* Denotes a commonly selected field.

Crashes	Persons	Vehicles	Drivers
<input type="checkbox"/> Arrival Hour	<input type="checkbox"/> Age*	<input type="checkbox"/> Body Type*	<input type="checkbox"/> Commercial Motor Vehicle License Status*
<input type="checkbox"/> Arrival Minute	<input type="checkbox"/> Air Bag Availability/Function*	<input type="checkbox"/> Bus Use	<input type="checkbox"/> Compliance With License Endorsements
<input type="checkbox"/> Arrival Time Ems	<input type="checkbox"/> Alcohol Test Result*	<input type="checkbox"/> Cargo Body Type	<input type="checkbox"/> Compliance With License Restrictions
<input type="checkbox"/> Atmospheric Condition*	<input type="checkbox"/> Alcohol Test Type	<input type="checkbox"/> Crash Avoidance Maneuver	<input type="checkbox"/> Driver Height(Feet)
<input type="checkbox"/> City	<input type="checkbox"/> Death Date	<input type="checkbox"/> Emergency Use*	<input type="checkbox"/> Driver Height(Inches)
<input type="checkbox"/> Construction/Maintenance Zone	<input type="checkbox"/> Death Day	<input type="checkbox"/> Extent Of Deformation	<input type="checkbox"/> Driver License Type Compliance
<input type="checkbox"/> County*	<input type="checkbox"/> Death Hour	<input type="checkbox"/> Fire Occurrence	<input type="checkbox"/> Driver Presence*
<input type="checkbox"/> Crash Date	<input type="checkbox"/> Death Minute	<input type="checkbox"/> Gross Vehicle Weight Rating	<input type="checkbox"/> Driver Related Factors(1)*
<input type="checkbox"/> Crash Day	<input type="checkbox"/> Death Month	<input type="checkbox"/> Hazardous Cargo	<input type="checkbox"/> Driver Related Factors(2)
<input type="checkbox"/> Crash Hour	<input type="checkbox"/> Death Time	<input type="checkbox"/> Impact Point-Initial*	<input type="checkbox"/> Driver Related Factors(3)
<input type="checkbox"/> Crash Minute	<input type="checkbox"/> Death Year	<input type="checkbox"/> Impact Point-Principal	<input type="checkbox"/> Driver Related Factors(4)
<input type="checkbox"/> Crash Month*	<input type="checkbox"/> Died at Scene /En Route	<input type="checkbox"/> Jackknife	<input type="checkbox"/> Driver Weight
<input type="checkbox"/> Crash Related Factors(1)	<input type="checkbox"/> Drug Test Results(1)	<input type="checkbox"/> Manner Of Leaving Of Scene	<input type="checkbox"/> Driver Zip Code
<input type="checkbox"/> Crash Related Factors(2)	<input type="checkbox"/> Drug Test Results(2)	<input type="checkbox"/> Most Harmful Event*	<input type="checkbox"/> License State*
<input type="checkbox"/> Crash Related Factors(3)	<input type="checkbox"/> Drug Test Results(3)	<input type="checkbox"/> Number of Axles	<input type="checkbox"/> Month Of First Accident, Suspension, Convictions
<input type="checkbox"/> Crash Time	<input type="checkbox"/> Drug Test Type(1)	<input type="checkbox"/> Number of Fatalities in Vehicle*	<input type="checkbox"/> Month Of Last Accident, Suspension, Convictions
<input type="checkbox"/> Crash Year	<input type="checkbox"/> Drug Test Type(2)	<input type="checkbox"/> Number of Occupants*	<input type="checkbox"/> Non-CDL License Status
<input type="checkbox"/> Day of Week*	<input type="checkbox"/> Drug Test Type(3)	<input type="checkbox"/> Registered Vehicle Owner	<input type="checkbox"/> Non-CDL License Type
<input type="checkbox"/> EMS Hour At Hospital	<input type="checkbox"/> Ejection*	<input type="checkbox"/> Registration State	<input type="checkbox"/> Previous DUI Convictions*
<input type="checkbox"/> EMS Minute At Hospital	<input type="checkbox"/> Ejection Path	<input type="checkbox"/> Rollover	



FATALITY ANALYSIS REPORTING SYSTEM  
ENCYCLOPEDIA

- Home
- Reports
- Query
- Publications
- Help

**Report: 2006 Traffic Fatalities by Holiday Periods**

STATE: All

YEAR: 2006

COUNT: Number of Persons

OUTPUT OPTIONS:

EXPORT (TXT)

EXPORT (XLS)

CHART

[View Cases](#)

<u>Holiday</u>	<u>Total</u>
New Year's Day (January)	265
Martin Luther King's Birthday	127
President's Day	149
Memorial Day	205
Independence Day	210
Labor Day	498
Columbus Day	514
Thanksgiving	630
Christmas	392
New Year's Eve (December)	102
<b>TOTAL</b>	<b>3,092</b>

Search Criteria:

Year 2006

[Holiday](#) (1, 2, 3, 4, 5, 6, 7, 8, 9, 10)

[Injury Severity](#) (4)

# Understanding the Data

## PERSON TYPE

- 01 Driver
- 02 Passenger
- 03 Occupant of MV Not in Transport
- 04 Occupant of Non-MV Transport Device
- 05 Pedestrian
- 06 Bicyclist
- 07 Other Cyclist
- 08 Other Pedestrians
- 09 Unknown Occupant
- 19 Unknown Type of Non-Motorist

**MOTOR  
VEHICLE  
OCCUPANTS**

# Understanding the Data

## RESTRAINT USE

- 
- 00 None Used
- 01 Shoulder Belt →
- 02 Lap Belt →
- 03 Lap & Shoulder Belt →
- 04 Child Safety Seat →
- 05 Motorcycle Helmet →
- 06 Bicycle Helmet
- 13 Safety Belt Used Improperly →
- 14 Child Safety Seat Used Improperly →
- 15 Helmets Used Improperly
- 08 Restraint Used, Type Unknown →
- 99 Unknown
- RESTRAINED**





Search NHTSA



### Browse Topics

Latest Releases

NCSA Publications

Available Data

Data Requests

Analysis & Statistics

Crash Research

State Data Program

View Case Data

Regulatory Analysis

Regulatory Evaluation

State Traffic Safety Information (STSI)

Traffic Records

About NCSA

Contact NCSA

## << NCSA



### The NEW National Center for Statistics and Analysis website!

The link below will help in making the adjustment to our new format. It explains where the features you remember can be found now.

▶ [Navigating Our New Pages](#)



Crash Research, Traffic Records & Driver Register, Regulatory Evaluation & Analysis, Sharing Information

### More On The Web

▶ [Traffic Records Coordinating Committee](#)

### Related Links

- ▶ [FARS, State Data Systems, CODES](#)
- ▶ [NASS, SCI, NMVCCS](#)
- ▶ [FARS Web-Based Encyclopedia](#)
- ▶ [Customer Automated Tracking System \(CATS\)](#)
- ▶ [State Traffic Safety Information \(STSI\)](#)