

**Evaluation Summary
WHITCU-ACI Technical Service Workshop
Las Vegas, NV
November 28-29, 2006**

The following results are compiled from ACI participant evaluation responses to the White House Initiative on Tribal College and Universities (WHITCU) American Competitiveness Initiative (ACI) Technical Service Workshop survey. The conference was held November 28-29, 2006 in Las Vegas, Nevada.

Of the sixty-five total attendees, thirty-six participants identified themselves as Tribal College/University (TCU's) representing twenty-four institutions from 10 states. In addition, twenty participants identified themselves as affiliated with federal agencies; of the nine other attendees, four represented WHITCU, one each reported their affiliation with American Indian Higher Education Consortium (AIHEC), the Presidents Advisory Board – TCU's and one 1862 LGU representative.

Of the twenty-seven evaluations received, twenty-five participants identified themselves as TCU participants, with two readily identifying themselves as speakers. An evaluation return rate of 41.53 % was achieved.

The following tables I. – V. are provided to help sustain clarity related to the participants responses.

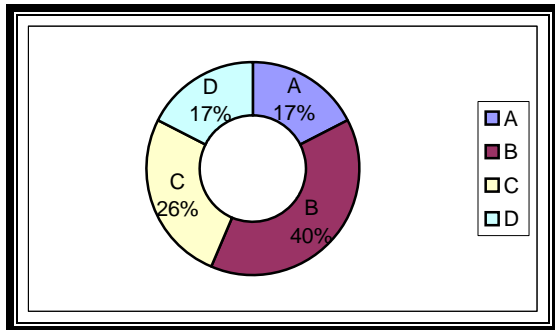


Table I.: Frequency of Workshop I. (10:30 AM – Noon) Attendance by Respective Letter.

Session	A	B	C	D
N =	4	9	6	4

Evaluation Summary
WHITCU-ACI Technical Service Workshop
Las Vegas, NV
November 28-29, 2006

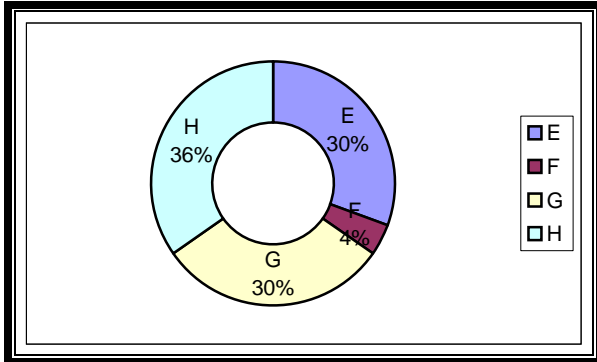


Table II: Frequency of Workshop II. (1:30 PM – 3:00 PM) Attendance by Respective Letter.

Session	E	F	G	H
N =	7	1	7	8

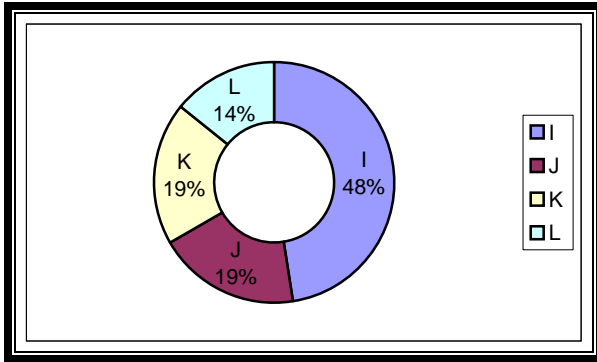
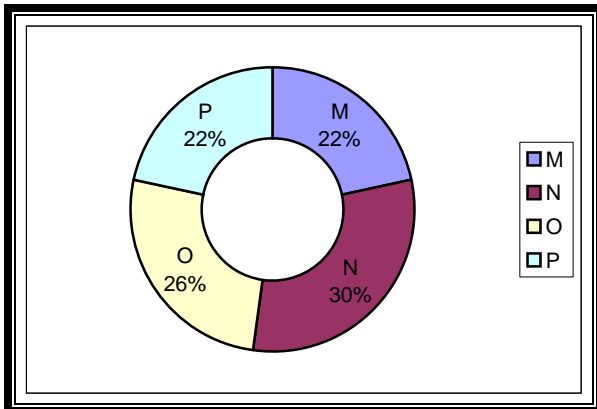


Table III: Frequency of Workshop III. (3:30 PM – 5:00 PM) Attendance by Respective Letter.

Session	I	J	K	L
N =	10	4	4	3



Evaluation Summary
WHITCU-ACI Technical Service Workshop
Las Vegas, NV
November 28-29, 2006

Table IV: Frequency of Workshop IV. - 11/28/06 (9:00 AM – 10:30 AM) Attendance by Respective Letter.

Session	M	N	O	P
N =	5	7	6	5

Survey respondents were asked to rate the following inquiries related to the perceived value of conference benefits. Responses are listed by frequency relating to each category/numerical choice to the following Likert-type scale.

Strongly Agree <---> Strongly Disagree

	5	4	3	2	1
I gained useful information:	(13)	(12)	(3)	-	-
I gained new information:	(18)	(7)	(2)	(1)	-
This was a good use of my time:	(12)	(10)	(5)	-	-
Adequate variety of speakers/topics	(12)	(9)	(5)	(1)	-
Seemed well organized:	(16)	(9)	(1)	-	-
Adequate format/activities:	(13)	(9)	(3)	(1)	-

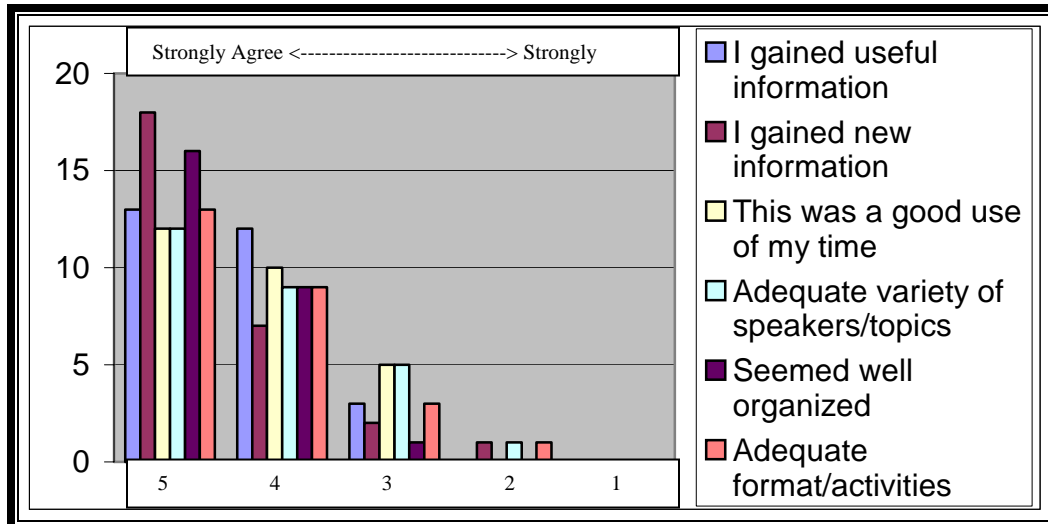


Table V.: Likert-type Scale Responses by Frequency to Respondent Questions.