

### U.S. Livestock Summary

#### Cattle Inventory Down 1 Percent

The inventory of all cattle and calves on hand January 1, 2000 was 98.0 million head, down 1 percent from the previous year. All inventory classes except milk cows, bulls, and all cattle and calves on feed posted declines from a year earlier. Milk replacement heifers and calves under 500 pounds, at 97 percent of the previous year, posted the largest decline. The 1999 calf crop of 38.7 million head was slightly lower than a year earlier. The lower inventory continues the downward trend in the cattle cycle. Reduced numbers of cows, calves, and replacement heifers indicate that this pattern should continue. The number of operations with cattle during 1999 was 1.1 million, down 2 percent from 1998.

On January 1, 2000 the inventory of cattle on feed in the U.S. totaled 14.0 million head, up 6 percent from the previous year. For feedlots with a capacity of 1,000 or more head, inventories increased 8 percent. With an inventory of 11.5 million head, these feedlots account for 82 percent of the U.S. total. Fed cattle marketings from these feedlots totaled 23.5 million head.

Commercial beef production for 1999 totaled 26.5 billion pounds, up 3 percent from the previous year.

#### Milk Production Increased 3 Percent

U.S. milk production increased 3 percent to 162.7 billion pounds in 1999. Milk cow numbers were virtually unchanged from a year ago, while production per cow increased 3 percent. The number of operations with milk cows during 1999 fell to 111,220, down 5 percent from a year earlier. Operations with fewer than 200 head declined while those with 200 or more head increased. The larger operations continued to increase their share of production, with the biggest gain for operations with 500 or more head.

#### Hog Inventory Down 4 Percent

The inventory of all hogs and pigs on December 1, 1999 was 59.5 million head, down 4 percent from the previous year. The inventory of breeding animals, was down 7 percent from 1998. Sows farrowed during 1999 decreased 3 percent from

a year earlier, while the pig crop dropped 2 percent. The average pigs saved per litter increased slightly during 1999 compared with a year earlier. The number of operations with hogs has fallen steadily since 1980 and was down to 98,460 operations in 1999. The share of inventory held by larger operations continues to increase; in 1999 the 7,125 operations with 2,000 or more hogs held 69 percent of the inventory, compared to 6,670 operations with 64 percent of the inventory a year earlier. Commercial pork production totaled 19.3 billion pounds in 1999, up 2 percent from the previous year. Number of head slaughtered increased 1 percent while the average dressed weight per animal was up 2 pounds.

#### Poultry Value of Production Up Slightly

The combined value of production from broilers, eggs, and turkeys plus the value of sales from chickens in 1999 was \$22.4 billion, up slightly from the \$22.3 billion in 1998. Of the combined total, 68 percent was from broilers, 19 percent from eggs, 13 percent from turkeys, and less than 1 percent from other chickens. The value of broilers produced during 1999 was \$15.1 billion, down slightly from 1998. The number of broilers produced has increased each year for the past 24 years; the 8.15 billion produced in 1999 was up 3 percent from 1998. The total live weight of broilers produced in 1999 was 40.8 billion pounds, up 6 percent from 1998. The average live weight per broiler increased to 5.01 pounds per bird in 1999.

The value of turkeys produced during 1999 was \$2.84 billion, up 6 percent from \$2.68 billion the previous year. Turkey production totaled 6.95 billion pounds live weight, compared with 7.05 billion pounds in 1998. The average price received by producers during 1999 was 40.8 cents per pound, compared with 38.0 cents in 1998.

The number of chickens on December 1, 1999, (excluding commercial broilers) was 436 million, up 3 percent from 1998. Layers, at 329 million, were

up 2 percent from the previous year. The 97.4 million pullets were up 2 percent from the 95.6 million of December 1, 1998. Other chickens showed a 26 percent increase to 9.66 million birds. All chickens were valued at \$1.15 billion on December 1, 1999, up 1 percent from a year earlier. Average value decreased from \$2.69 to \$2.65 per bird.

Egg production during the year ending November 30, 1999, was 82.7 billion eggs, up 4 percent from the 79.8 billion eggs in 1998. Layer numbers during 1999 averaged 322 million, up 3 percent from the year earlier. The annual average production per layer on hand in 1999 was 257 eggs, compared with the 1998 average of 256 eggs per layer.

### **Trout and Catfish Sales Increase**

For trout growers in the 20 selected states, value of sales, including eggs, was \$76.9 million during 1999, up 4 percent from the 74.0 million during 1998. Growers in the 20 selected states sold a total of 60.3 million pounds of trout measuring 12 inches or longer.

Catfish growers in the 13 selected states had sales of \$488 million during 1999. These sales were up 3 percent from the 1998 total of \$475 million. Sales of foodsize fish totaled \$464 million, up 4 percent from the \$445 million in 1998. Sales of stockers totaled \$3.64 million, down 54 percent from the \$7.89 million in 1998. Catfish water acres increased 5 percent from January 1, 1999, to 189 thousand on January 1, 2000.

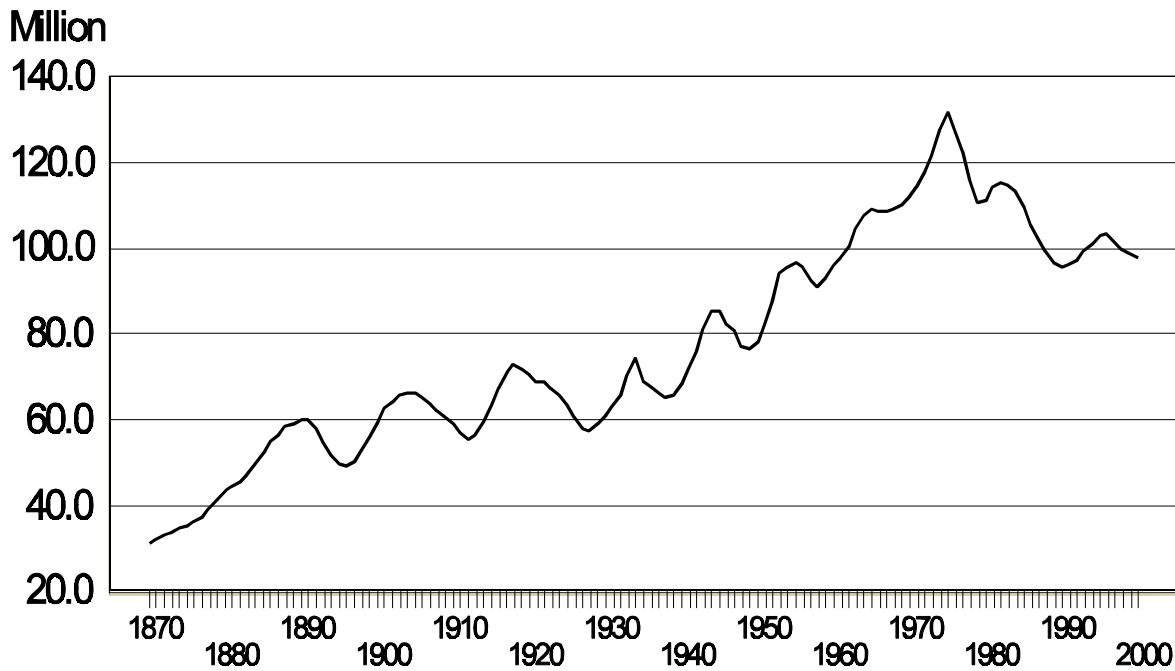
## Livestock

### Cattle and Calves: January 1 Inventory

Year	Cattle Inventory <sup>1</sup>										Calf Crop
	Total Cattle	Cows			Bulls	Heifers			Steers 500+ lbs.	Calves <500 lbs.	
		Total	Beef	Milk		Beef	Milk	Other			
<i>thousand head</i>											
1995	102,785	44,672	35,190	9,482	2,385	6,452	4,121	9,302	17,513	18,341	40,105
1996	103,548	44,739	35,319	9,420	2,384	6,189	4,090	9,948	17,815	18,384	40,264
1997	101,656	43,776	34,458	9,318	2,350	6,042	4,058	10,212	17,392	17,826	39,823
1998	99,744	43,084	33,885	9,199	2,270	5,764	3,986	10,051	17,189	17,401	38,961
1999	99,115	42,878	33,745	9,133	2,281	5,535	4,069	10,170	16,891	17,290	38,812
2000	98,048	42,734	33,546	9,188	2,294	5,530	3,954	10,045	16,652	16,840	38,710

<sup>1</sup> Totals may not add due to rounding. NASS, Livestock Branch, (202) 720-3570.

## Cattle Inventory, January 1, 1870-2000 United States



## Cattle and Calves: Marketings, Price, and Cash Receipts

Year	Marketings <sup>1</sup>		Average Price		Cash Receipts <sup>2</sup>
	Cattle	Calves	Cattle	Calves	
	<i>thousand head</i>	<i>thousand head</i>	<i>dollars/cwt</i>	<i>dollars/cwt</i>	<i>million dollars</i>
1994	46,499	9,571	66.70	87.20	36,253
1995	48,741	9,656	61.80	73.10	34,044
1996	48,722	10,295	58.70	58.40	30,977
1997	49,647	10,154	63.10	78.90	36,000
1998	47,227	9,729	59.60	78.80	33,415
1999	48,386	9,856	63.40	87.70	36,522

<sup>1</sup> Includes custom slaughter for use on farm where produced and state outshipments but excludes interfarm sales within the state. <sup>2</sup> Receipts from marketings and sale of farm slaughter. NASS, Livestock Branch, (202) 720-3570.

## Cattle and Calves: Top 10 States

State Rank	January 1, 2000 Inventory		1998 Cash Receipts <sup>1</sup>	
	State	Head	State	Dollars
		<i>thousand</i>		<i>million</i>
1	Texas	13,900	Texas	5,845
2	Nebraska	6,650	Nebraska	4,266
3	Kansas	6,550	Kansas	4,026
4	Oklahoma	5,200	Colorado	2,149
5	California	5,100	Oklahoma	1,836
6	Missouri	4,350	Iowa	1,415
7	South Dakota	3,900	California	1,205
8	Iowa	3,700	South Dakota	998
9	Wisconsin	3,400	Missouri	756
10	Colorado	3,150	Minnesota	750

<sup>1</sup> Receipts from marketings and sale of farm slaughter. NASS, Livestock Branch, (202) 720-3570.

## Cattle and Calves: Operations and Inventory by Size Group

Year	Total	Number and Percent by Size Group (head) <sup>1</sup>				
		1-49	50-99	100-499	500-999	1,000+
		<i>number</i>	<i>number</i>	<i>number</i>	<i>number</i>	<i>number</i>
Number of Operations <sup>2</sup>						
1994	1,197,290	755,500	207,490	208,610	17,070	8,620
1995	1,190,630	745,500	207,780	209,860	18,310	9,180
1996	1,176,700	734,000	205,030	210,760	17,980	8,930
1997	1,148,050	715,040	200,550	205,390	17,750	9,320
1998	1,115,650	695,400	194,510	198,515	17,845	9,380
1999	1,095,960	685,500	186,230	196,750	18,100	9,380
January 1 Inventory						
1994	100,974	13.3	14.0	38.7	11.1	22.9
1995	102,785	13.0	13.9	38.3	11.6	23.2
1996	103,548	12.8	13.7	38.6	11.4	23.5
1997	101,656	12.5	13.5	38.1	11.4	24.5
1998	99,744	12.4	13.0	37.0	11.7	25.9
1999	99,115	12.2	12.8	37.1	12.0	25.9

<sup>1</sup> Percents reflect average distributions of various probability surveys conducted during the year. <sup>2</sup> An operation is any place with at least one head at any time during the year. NASS, Livestock Branch, (202) 720-3570.

## Livestock

### Cattle and Calves: Commercial Slaughter

Year	Slaughter <sup>1</sup>		Average Live Weight		Average Dressed Weight <sup>2</sup>		Meat Production	
	Cattle	Calves	Cattle	Calves	Cattle	Calves	Beef	Veal
	<i>thousand head</i>		<i>pounds</i>				<i>million pounds</i>	
1994	34,196	1,268	1,189	383	717	227	24,278	283
1995	35,639	1,430	1,183	372	711	218	25,117	307
1996	36,583	1,768	1,169	343	702	211	25,421	368
1997	36,318	1,575	1,173	338	706	208	25,384	323
1998	35,465	1,458	1,203	285	730	174	25,653	251
1999	36,150	1,282	1,210	291	736	176	26,385	224

<sup>1</sup> Excludes farm slaughter. <sup>2</sup> Federally inspected slaughter. NASS, Livestock Branch, (202) 720-3570.

### Cattle on Feed: Inventory and Marketings by State

State <sup>1</sup>	Jan 1, 2000 Inventory <sup>2</sup>	1999 Marketings	State <sup>1</sup>	Jan 1, 2000 Inventory <sup>2</sup>	1999 Marketings
	<i>thousand head</i>	<i>thousand head</i>		<i>thousand head</i>	<i>thousand head</i>
Arizona	272	290	South Dakota	194	366
California	415	590	Texas	2,900	6,065
Colorado	1,180	2,610	Washington	228	527
Idaho	310	658			
Iowa	375	589			
Kansas	2,310	5,210	All Other States	445	777
Nebraska	2,300	4,770			
New Mexico	116	186			
Oklahoma	430	892	Total U.S.	11,475	23,530

<sup>1</sup> 1000+ capacity feedlots. <sup>2</sup> Cattle and calves on feed are animals for slaughter market being fed a ration of grain or concentrates and are expected to produce a carcass that will grade select or better. NASS, Livestock Branch, (202) 720-3570.

### Cattle on Feed: Feedlots, Inventory, and Marketings, United States

	Counts by Size Group (head)							
	1,000-1,999	2,000-3,999	4,000-7,999	8,000-15,999	16,000-23,999	24,000-31,999	32,000-49,999	50,000+
Number of Feedlots <sup>1</sup>	831	507	336	193	80	61	64	47
January 1, 2000 Inventory <sup>2</sup>	<i>thousand head</i>							
	551	716	1,122	1,556	1,150	1,362	2,109	2,909
Marketings <sup>3</sup>	912	1,277	2,069	3,093	2,410	2,787	4,395	6,587

<sup>1</sup> Number of lots operating at any time during the 1999. <sup>2</sup> Cattle and calves on feed are animals for slaughter market being fed a ration of grain or concentrates and are expected to produce a carcass that will grade select or better. <sup>3</sup> Marketed during calendar year 1999. NASS, Livestock Branch, (202) 720-3570.

**Beef Cows: Operations and Inventory by Size Group**

Year	Total	Number and Percent by Size Group (head) <sup>1</sup>			
		1- 49	50 - 99	100 - 499	500+
		<i>number</i>	<i>number</i>	<i>number</i>	<i>number</i>
Number of Operations <sup>2</sup>					
1994	897,260	720,150	103,120	68,350	5,640
1995	897,660	716,150	105,460	70,370	5,680
1996	885,980	703,850	106,410	70,225	5,495
1997	872,840	692,400	104,230	70,665	5,545
1998	855,460	678,350	101,400	70,285	5,425
1999	843,230	666,050	101,080	70,695	5,405
		<i>percent</i>			
January 1 Inventory					
1994	34,603	31.5	19.4	34.6	14.5
1995	35,190	31.2	19.2	35.3	14.3
1996	35,319	30.8	19.6	35.4	14.2
1997	34,458	30.4	19.4	35.9	14.3
1998	33,885	30.4	18.9	36.1	14.6
1999	33,745	29.9	19.1	36.6	14.4

<sup>1</sup> Percents reflect average distributions of various probability surveys conducted during the year. <sup>2</sup> An operation is any place with at least one head of beef cows at any time during the year. Included in operations with cattle. NASS, Livestock Branch, (202) 720-3570.

**Milk Cows: Operations and Inventory by Size Group**

Year	Total	Operations and Percent by Size Group (head) <sup>1</sup>						
		1-29	30-49	50-99	100-199	200+	200-499	500+
		<i>number</i>	<i>number</i>	<i>number</i>	<i>number</i>	<i>number</i>	<i>number</i>	<i>number</i>
Number of Operations <sup>2</sup>								
1994	148,140	53,500	32,640	40,640	14,450	6,910		
1995	139,670	48,150	31,030	39,280	14,290	6,920		
1996	130,980	43,050	29,230	37,560	14,090	7,050		
1997	123,700	39,070	27,285	35,850	14,040	7,455	5,119	2,336
1998	117,180	36,200	25,485	34,017	13,908		5,155	2,415
1999	111,220	33,110	23,925	33,090	13,115		5,425	2,555
		<i>percent</i>						
Milk Cow Inventory <sup>3</sup>								
1994	9,494	4.6	14.0	28.7	19.2	33.4		
1995	9,466	4.0	13.0	28.0	20.0	35.0		
1996	9,372	4.0	12.0	27.0	20.0	37.0		
1997	9,252	3.5	11.5	26.0	20.0		14.6	24.4
1998	9,154	3.5	10.5	24.2	19.3		15.5	27.0
1999	9,156	3.1	10.1	23.2	18.4		16.3	28.9

<sup>1</sup> Percents reflect average distributions of various probability surveys conducted during the year. <sup>2</sup> An operation is any place with at least one head at any time during the year. <sup>3</sup> Average number during year, excluding heifers not yet fresh. NASS, Livestock Branch, (202) 720-3570.

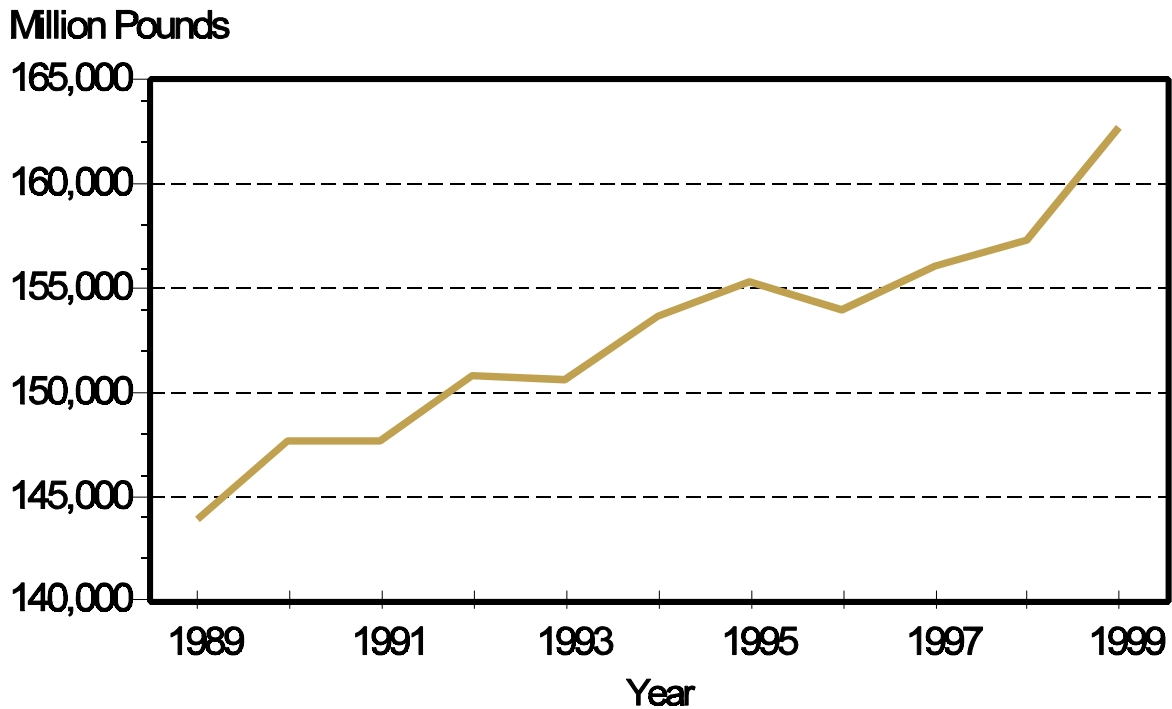
**Livestock**

**Milk Cows: Inventory, Production, Price, and Value of Production**

Year	Milk Cow Inventory <sup>1</sup>	Milk Production <sup>2</sup>		Average Price	Value of Production <sup>3</sup>
		Per Cow	Total		
	<i>thousand head</i>	<i>pounds</i>	<i>million pounds</i>	<i>dollars/cwt</i>	<i>million dollars</i>
1994	9,494	16,179	153,602	13.15	20,202
1995	9,466	16,405	155,292	12.93	20,079
1996	9,372	16,433	154,006	14.94	23,003
1997	9,252	16,871	156,091	13.53	21,126
1998	9,154	17,189	157,348	15.46	24,332
1999	9,156	17,771	162,711	14.38	23,402

<sup>1</sup> Average number during year, excluding heifers not yet fresh. <sup>2</sup> Excludes milk sucked by calves. <sup>3</sup> Includes value of milk fed to calves. NASS, Livestock Branch, (202) 720-3570.

## Milk Production, 1989-1999 United States



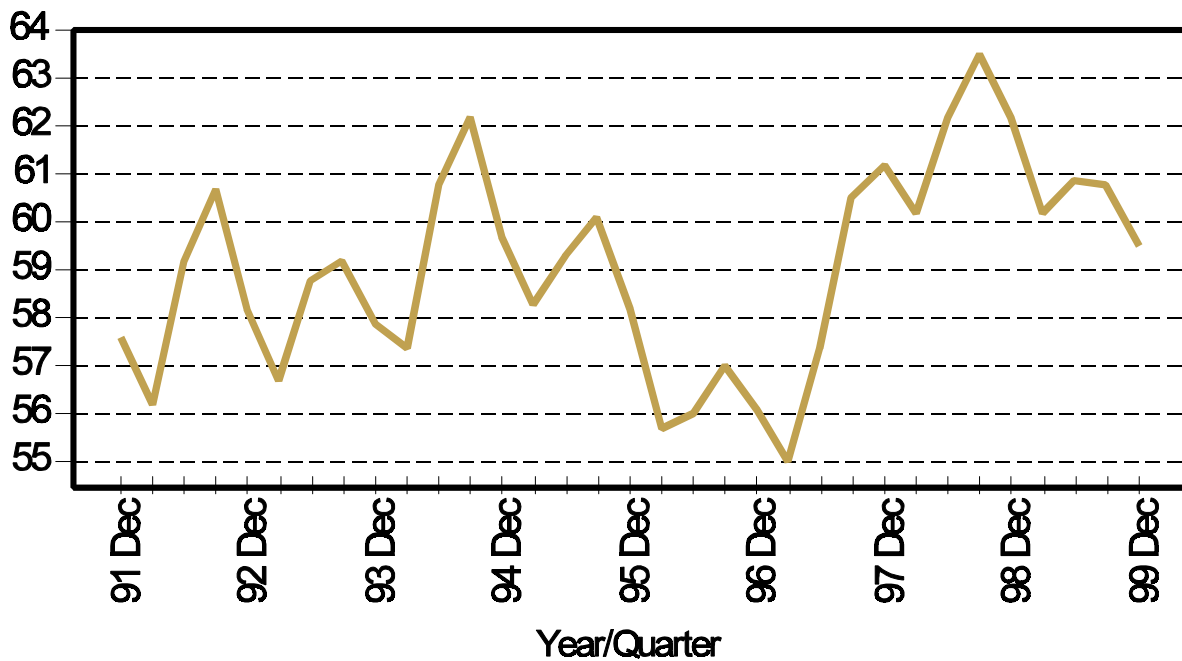
**Hogs and Pigs: Inventory and Pig Crop**

Year	Hogs and Pigs Inventory, Dec 1			Sows Farrowed <sup>1</sup>	Pigs per Litter <sup>1</sup>	Pig Crop <sup>1</sup>
	Total	Breeding	Market			
	<i>thousand head</i>					<i>thousand head</i>
1994	59,738	6,998	52,739	12,396	8.19	101,478
1995	58,201	6,770	51,431	11,888	8.31	98,816
1996	56,124	6,578	49,546	11,113	8.50	94,459
1997	61,158	6,957	54,200	11,479	8.68	99,584
1998	62,206	6,682	55,523	12,061	8.71	105,005
1999	59,507	6,244	53,264	11,666	8.79	102,569

<sup>1</sup> December of preceding year through November. Record Inventory: 83.7 million head December 1, 1944. NASS, Livestock Branch, (202) 720-3570.

## Quarterly Hogs and Pigs Inventory United States

Million Head





## Livestock

### Hogs and Pigs: Top 10 States

State Rank	Dec. 1, 1999 Inventory <sup>1</sup>		1998 Cash Receipts	
	State	Head	State	Dollars
		<i>thousand</i>		<i>thousand</i>
1	Iowa	15,500	Iowa	2,413,704
2	North Carolina	9,500	North Carolina	1,323,109
3	Minnesota	5,500	Minnesota	916,989
4	Illinois	4,100	Illinois	679,181
5	Indiana	3,250	Indiana	558,486
6	Missouri	3,150	Nebraska	553,336
7	Nebraska	3,000	Missouri	540,461
8	Oklahoma	2,260	Ohio	316,656
9	Ohio	1,500	Oklahoma	311,085
10	Kansas	1,460	Kansas	249,282

<sup>1</sup> Receipts from marketings and sale of farm slaughter; includes allowance for higher average price of state outshipments of feeder pigs. NASS, Livestock Branch, (202) 720-3570.

### Hogs and Pigs: Marketings, Price, and Cash receipts

Year	Marketings <sup>1</sup>	Average Price	Cash Receipts <sup>2</sup>
	<i>thousand head</i>	<i>dollars/cwt</i>	<i>million dollars</i>
1994	101,121	39.90	9,898
1995	103,007	40.50	10,255
1996	101,468	51.90	12,565
1997	104,301	52.90	13,054
1998	117,240	34.40	9,444
1999	121,187	30.30	8,623

<sup>1</sup> Includes custom slaughter for use on farms where produced and state outshipments but excludes interfarm sales within the state. <sup>2</sup> Receipts from marketings and sale of farm slaughter, includes allowance for higher average price of state inshipments and outshipments of feeder pigs. NASS, Livestock Branch, (202) 720-3570.

### Hogs and Pigs: Commercial Slaughter

Year	Slaughter	Average Live Weight	Average Dressed Weight <sup>2</sup>	Pork Production
	<i>thousand head</i>	<i>pounds</i>	<i>pounds</i>	<i>million pounds</i>
1994	95,696	255	185	17,659
1995	96,325	256	186	17,810
1996	92,394	254	186	17,084
1997	91,960	256	189	17,245
1998	101,029	256	189	18,981
1999	101,544	259	191	19,278

<sup>1</sup> Excludes farm slaughter. <sup>2</sup> Federally inspected only. NASS, Livestock Branch, (202) 720-3570.

## Hogs and Pigs: Operations and Inventory

Year	Total	Number and Percent by Size of Operation (head) <sup>1</sup>					
		1-99	100-499	500-999	1,000-1,999	2,000-4,999	5,000+
		<i>number</i>	<i>number</i>	<i>number</i>	<i>number</i>	<i>number</i>	<i>number</i>
Number of Operations <sup>2</sup>							
1994	196,030	114,960	50,695	17,315	8,220	3,670	1,170
1995	168,450	96,730	44,140	15,160	7,420	3,615	1,385
1996	142,380	81,930	35,585	12,960	6,830	3,490	1,585
1997	122,160	69,460	28,095	11,670	6,755	4,355	1,825
1998	113,830	61,670	27,315	11,350	6,825	4,765	1,905
1999	98,460	52,730	22,850	9,255	6,500	5,120	2,005
		<i>percent</i>					
December 1 Inventory							
1994	59,738	4.0	20.5	19.5	18.0	17.0	21.0
1995	58,201	3.5	18.0	17.0	17.0	17.0	27.5
1996	56,124	3.0	15.0	15.0	16.0	17.0	34.0
1997	61,158	2.0	11.0	12.0	14.5	20.5	40.0
1998	62,206	2.0	9.5	11.0	14.0	21.5	42.0
1999	59,507	1.5	8.0	9.0	13.0	22.0	46.5

<sup>1</sup> Percent average distributions of various probability surveys conducted during the year. <sup>2</sup> Operation: a place with at least one head at any time during the year prior to December 1. NASS, Livestock Branch, (202) 720-3570.

## Hogs and Pigs: Pigs per Litter

Year and Quarter	All Operations	Number of Pigs per Litter by Size of Operation (head)					
		1-99	100-499	500-999	1,000-1,999	2,000-4,999	5,000+
1995 Dec-Feb	8.24	7.00	7.70	8.00	8.20	8.30	8.80
Mar-May	8.32	7.20	7.90	8.10	8.40	8.40	8.80
Jun-Aug	8.34	7.20	7.70	7.90	8.20	8.70	8.80
Sep-Nov	8.35	7.30	7.80	8.00	8.40	8.50	8.70
1996 Dec-Feb	8.43	6.90	7.80	8.00	8.40	8.90	8.80
Mar-May	8.48	7.80	8.10	8.20	8.50	8.50	8.80
Jun-Aug	8.55	6.80	7.80	8.30	8.40	8.70	8.80
Sep-Nov	8.54	7.30	8.00	8.20	8.30	8.60	8.90
1997 Dec-Feb	8.63	7.20	7.70	8.10	8.40	8.60	8.90
Mar-May	8.67	7.60	7.90	8.20	8.40	8.60	9.00
Jun-Aug	8.72	7.50	7.90	8.20	8.50	8.70	9.00
Sep-Nov	8.67	7.40	8.10	8.40	8.60	8.80	9.00
1998 Dec-Feb	8.70	7.10	7.90	8.30	8.50	8.80	8.90
Mar-May	8.75	7.40	8.10	8.40	8.50	8.80	9.00
Jun-Aug	8.72	7.30	8.10	8.40	8.60	8.80	8.90
Sep-Nov	8.65	7.70	8.00	8.20	8.50	8.70	8.90
1999 Dec-Feb	8.73	7.60	8.10	8.20	8.40	8.70	8.90
Mar-May	8.80	7.80	8.10	8.30	8.70	8.70	9.00
Jun-Aug	8.86	7.80	7.90	8.30	8.50	8.90	9.00
Sep-Nov	8.78	7.40	8.40	8.40	8.70	8.80	8.90

NASS, Livestock Branch, (202) 720-3570.

# Livestock

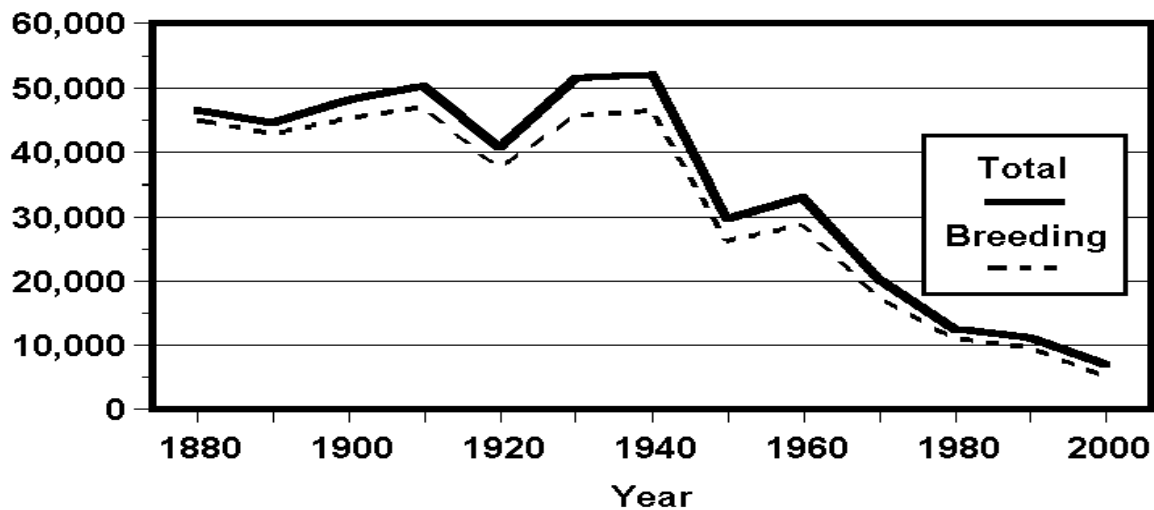
## Sheep and Lambs: Sheep Inventory and Lamb Crop

Year	January 1 Sheep Inventory						
	Total	Ewes 1+ Years	Rams 1+ Years	Replac- ment Lambs	Market Lambs	Market Sheep	Lamb Crop <sup>1</sup>
	<i>thousand head</i>						
1995	8,989	5,404	257	857	2,375	97	5,643
1996	8,465	5,134	234	858	2,162	77	5,361
1997	8,024	4,912	220	787	2,020	85	5,356
1998	7,825	4,570	203	839	2,123	91	5,007
1999	7,215	4,322	203	774	1,834	83	4,719
2000	7,026	4,228	206	730	1,783	80	

<sup>1</sup> Lambs crop is defined as lambs born in the Native States and lambs docked or branded in the Western States. Record Inventory: 56.2 million head on January 1, 1867. NASS, Livestock Branch, (202) 720-3570.

## Sheep and Lambs, 1880-2000 United States

Thousand Head



### Sheep and Lambs: Top 10 States

State Rank	January 1, 2000 Inventory		1998 Cash Receipts <sup>1</sup>	
	State	Head <i>thousand</i>	State	Dollars <i>thousand</i>
1	Texas	1,200	Colorado	108,886
2	California	800	Texas	61,759
3	Wyoming	570	California	52,094
4	Colorado	440	Wyoming	30,224
5	South Dakota	420	South Dakota	28,692
6	Utah	400	Iowa	23,395
7	Montana	370	Montana	21,434
8	New Mexico	290	Utah	19,395
9	Idaho	275	Idaho	16,758
10	Iowa	265	Minnesota	12,109

<sup>1</sup> Receipts from marketings and sale of farm slaughter. NASS, Livestock Branch, (202) 720-3570.

### Sheep and Lambs: Marketings, Price, and Cash Receipts

Year	Marketings <sup>1</sup>		Average Price		Cash Receipts <sup>2</sup> <i>million dollars</i>
	Sheep <i>thousand head</i>	Lambs <i>thousand head</i>	Sheep <i>dollars/cwt</i>	Lambs <i>dollars/cwt</i>	
1994	1,465	6,469	30.90	65.60	510
1995	1,052	6,286	28.00	78.20	566
1996	938	6,069	29.90	88.20	612
1997	1,015	5,676	37.90	90.30	635
1998	992	5,505	30.60	72.30	485
1999	789	5,198	31.10	74.50	469

<sup>1</sup> Includes custom slaughter for use on farm where produced and State outshipments but excludes interfarm sales within the State. <sup>2</sup> Receipts from marketings and sale of farm slaughter. NASS, Livestock Branch, (202) 720-3570.

### Sheep and Lambs: Commercial Slaughter

Year	Slaughter <sup>1</sup> <i>thousand head</i>	Average Live Weight <i>pounds</i>	Average Dressed Weight <sup>2</sup> <i>pounds</i>	Lamb and Mutton Production <i>million pounds</i>
1994	4,938	125	63	306
1995	4,560	125	63	284
1996	4,184	128	64	265
1997	3,907	133	67	257
1998	3,804	132	66	249
1999	3,701	133	67	243

<sup>1</sup> Excludes farm slaughter. <sup>2</sup> Federally inspected only. NASS, Livestock Branch, (202) 720-3570.

## Livestock

### Sheep and Lambs: Wool Production and Value

Year	Sheep Shorn <sup>1</sup>	Weight per Fleece	Shorn Wool Production	Average Price <sup>2</sup>	Value of Production
	<i>thousand head</i>	<i>pounds</i>	<i>thousand pounds</i>	<i>dollars/pound</i>	<i>thousand dollars</i>
1994	8,884	7.72	68,625	0.78	52,404
1995	8,126	7.80	63,368	1.04	64,122
1996	7,215	7.78	56,159	0.70	39,270
1997	6,960	7.70	53,578	0.84	44,909
1998	6,428	7.66	49,255	0.60	29,415
1999	6,150	7.57	46,549	0.38	17,852

<sup>1</sup> Includes shearing at commercial feedlots. <sup>2</sup> Weighted by sales. NASS, Livestock Branch, (202) 720-3570.

### Breeding Sheep: Survey Percent by Size Group

Year	Total	Operations and Inventory Percents by Size Groups			
		1 - 99	100 - 499	500- 4,999	5,000+
		<i>percent <sup>1</sup></i>	<i>percent <sup>1</sup></i>	<i>percent <sup>1</sup></i>	<i>percent <sup>1</sup></i>
Number of Operations <sup>2</sup>					
1996	76,600	90.9	7.0	2.0	0.1
1997	72,680	91.9	6.2	1.8	0.1
1998	68,550	90.8	6.8	2.3	0.1
1999	66,800	90.6	7.3	2.0	0.1
2000		91.2	7.2	1.6	0.1
		<i>percent</i>			
Jan 1 Breeding Inventory					
1996	6,226	25.0	20.4	40.9	13.7
1997	5,919	25.7	20.3	40.0	14.0
1998	5,611	25.5	19.2	42.6	12.7
1999	5,299	25.9	20.4	39.0	14.7
2000	5,163	27.90	22.0	35.2	14.8

<sup>1</sup> Percent distribution according to end-of-year surveys. <sup>2</sup> Operation a place with at least one head at any time during the year. NASS, Livestock Branch, (202) 720-3570.

### Honey: Number of Colonies, Yield, Production, Stocks, Price, and Value <sup>1</sup>

Year	Honey Producing Colonies	Yield per Colony	Production	Stocks Dec 15 <sup>2</sup>	Average Price per Pound	Value of Production
	<i>thousand</i>	<i>pounds</i>	<i>thousand pounds</i>	<i>thousand pounds</i>	<i>cents</i>	<i>thousand dollars</i>
1994	2,783	78.4	218,187	59,877	52.8	115,203
1995	2,655	79.5	211,073	42,313	68.5	144,585
1996	2,581	77.3	199,511	47,206	88.8	177,166
1997	2,631	74.7	196,536	70,696	75.2	147,795
1998	2,633	83.7	220,316	80,808	65.5	147,254
1999	2,688	76.3	205,228	79,361	59.9	125,422

<sup>1</sup> For producers with 5 or more colonies. <sup>2</sup> Stocks held by producers. Does not include stocks under loan. NASS, Livestock Branch, (202) 720-3570.

**Broilers: Production, Price, and Value, United States, 1994-99**<sup>1 2</sup>

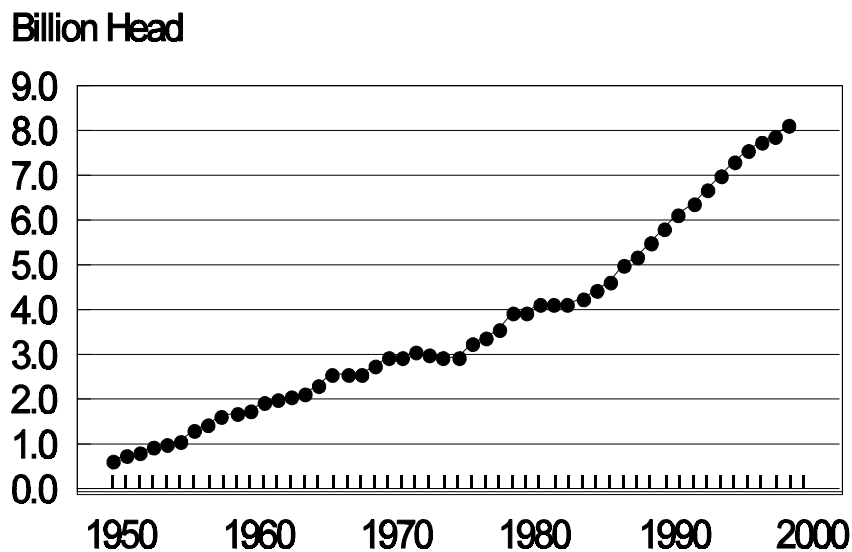
Year	Number Produced	Pounds Produced	Price per Pound <sup>3</sup>	Value of Production
	<i>thousand head</i>	<i>thousand pounds</i>	<i>dollars</i>	<i>thousand dollars</i>
1994	7,017,540	32,528,500	0.350	11,371,723
1995	7,325,670	34,222,000	0.344	11,762,222
1996	7,596,760	36,479,100	0.381	13,903,479
1997	7,764,200	37,540,750	0.377	14,158,926
1998	7,934,280	38,553,600	0.393	15,144,551
1999	8,146,010	40,829,800	0.371	15,128,840

<sup>1</sup> Estimates cover the 12-month period Dec 1, previous year through Nov 30.

<sup>2</sup> Broiler production including other domestic meat-type breeds.

<sup>3</sup> Liveweight equivalent price. NASS, Livestock Branch, (202) 720-3570.

**Annual Broiler Production, 1950-1999**  
**United States**



# Livestock

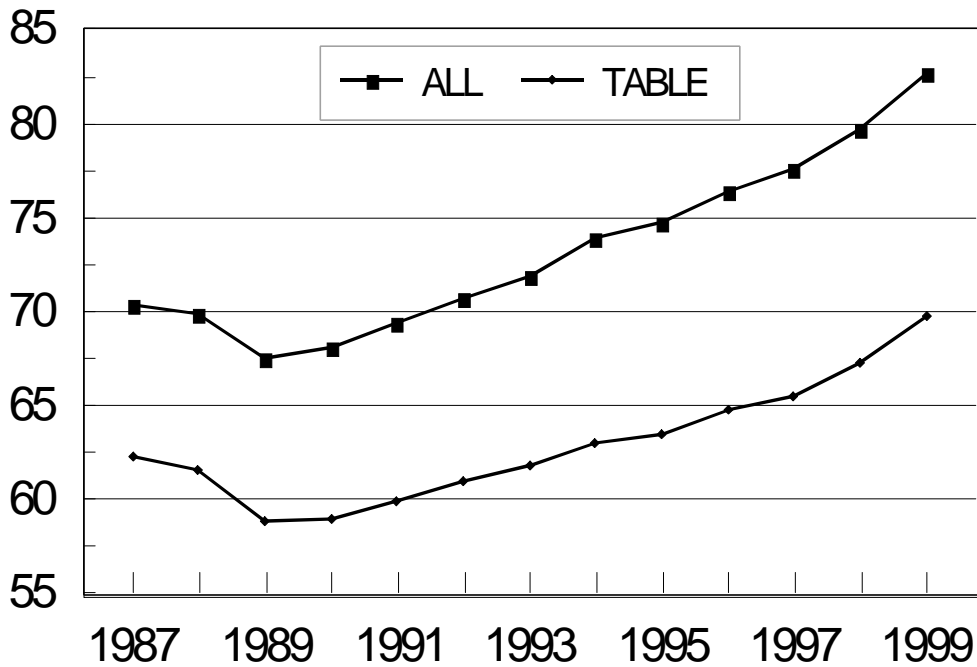
## Layers: Egg Production, Price, and Value

Year <sup>1</sup>	Avg. Number of Layers	Eggs per Layer <sup>2</sup>	Egg Production	Average Price <sup>3</sup>	Value of Production
	<i>thousand</i>		<i>thousand</i>	<i>dollars/dozen</i>	<i>thousand dollars</i>
1994	291,035	254	73,903	0.615	3,789,834
1995	294,350	254	74,764	0.625	3,892,912
1996	298,270	256	76,377	0.750	4,776,252
1997	303,604	255	77,532	0.703	4,539,929
1998	312,191	256	79,754	0.668	4,439,446
1999	322,337	257	82,711	0.627	4,322,589

<sup>1</sup> Estimates cover December 1 of previous year through November 30. <sup>2</sup> Total egg production divided by average number of layers on hand. <sup>3</sup> Average of all eggs sold, including hatching eggs. NASS, Livestock Branch, (202) 720-3570.

## All and Table Egg Production, 1987-99 United States

BILLION EGGS



**Chickens: Inventory and Value**

Year (Dec 1)	Inventory Number <sup>1</sup>				Average Price per Head	Inventory Value
	Layers <sup>2</sup>	Pullets <sup>3</sup>	Other Chickents	Total		
	<i>thousand head</i>				<i>dollars</i>	<i>thousand dollars</i>
1994	298,525	79,853	7,369	385,747	2.34	902,815
1995	299,071	81,369	7,637	388,077	2.41	934,905
1996	303,922	81,572	7,243	392,737	2.65	1,039,071
1997	312,137	90,344	7,549	410,030	2.72	1,113,183
1998	321,718	95,645	7,682	425,045	2.69	1,143,835
1999	329,305	97,362	9,659	436,326	2.65	1,154,840

<sup>1</sup> Excludes commercial broilers. <sup>2</sup> Pullets 20 weeks old or older plus layers one year old or older. <sup>3</sup> Pullets less than 20 weeks old. NASS, Livestock Branch, (202) 720-3570.

**Turkeys: Production, Price, and Value**

Year	Production		Average Price <sup>2</sup>	Value of Production
	Head <sup>1</sup>	Pounds		
	<i>thousand</i>	<i>thousand</i>	<i>dollars/pound</i>	<i>thousand dollars</i>
1994	286,585	6,540,295	0.404	2,643,057
1995	292,356	6,761,327	0.410	2,769,397
1996	302,713	7,222,834	0.433	3,124,496
1997	301,251	7,225,059	0.399	2,884,377
1998	285,204	7,050,944	0.380	2,679,301
1999	272,994	6,947,156	0.408	2,835,389

<sup>1</sup> September 1 of previous year through August 31 of year indicated. <sup>2</sup> Liveweight equivalent price. NASS, Livestock Branch, (202) 720-3570.

**Catfish and Trout: Operations, Catfish Water Acres, and Grower Sales**

Year	Number of Operations on December 1		Catfish Water Acres Jan 1	Total Sales <sup>1</sup>	
	Catfish	Trout		Catfish	Trout
			<i>acres</i>	<i>thousand dollars</i>	
1994	1,404		151,650	397,403	
1995	1,300		155,420	399,542	
1996	1,328		167,340	425,383	
1997	1,319		177,460	426,827	
1998	1,243		171,130	475,309	73,978
1999	1,279	476	180,865	488,184	76,922
2000	1,243	449	189,230		

<sup>1</sup> Catfish total includes broodfish for breeding and previously used for breeding, and fingerlings and fry. Trout total includes fingerlings and eggs. NASS, Livestock Branch, (202) 720-3570.