

Figure 1

Archived Information

Affordability – does financial aid matter?

College Participation By Achievement Test and Socioeconomic Status Quartile

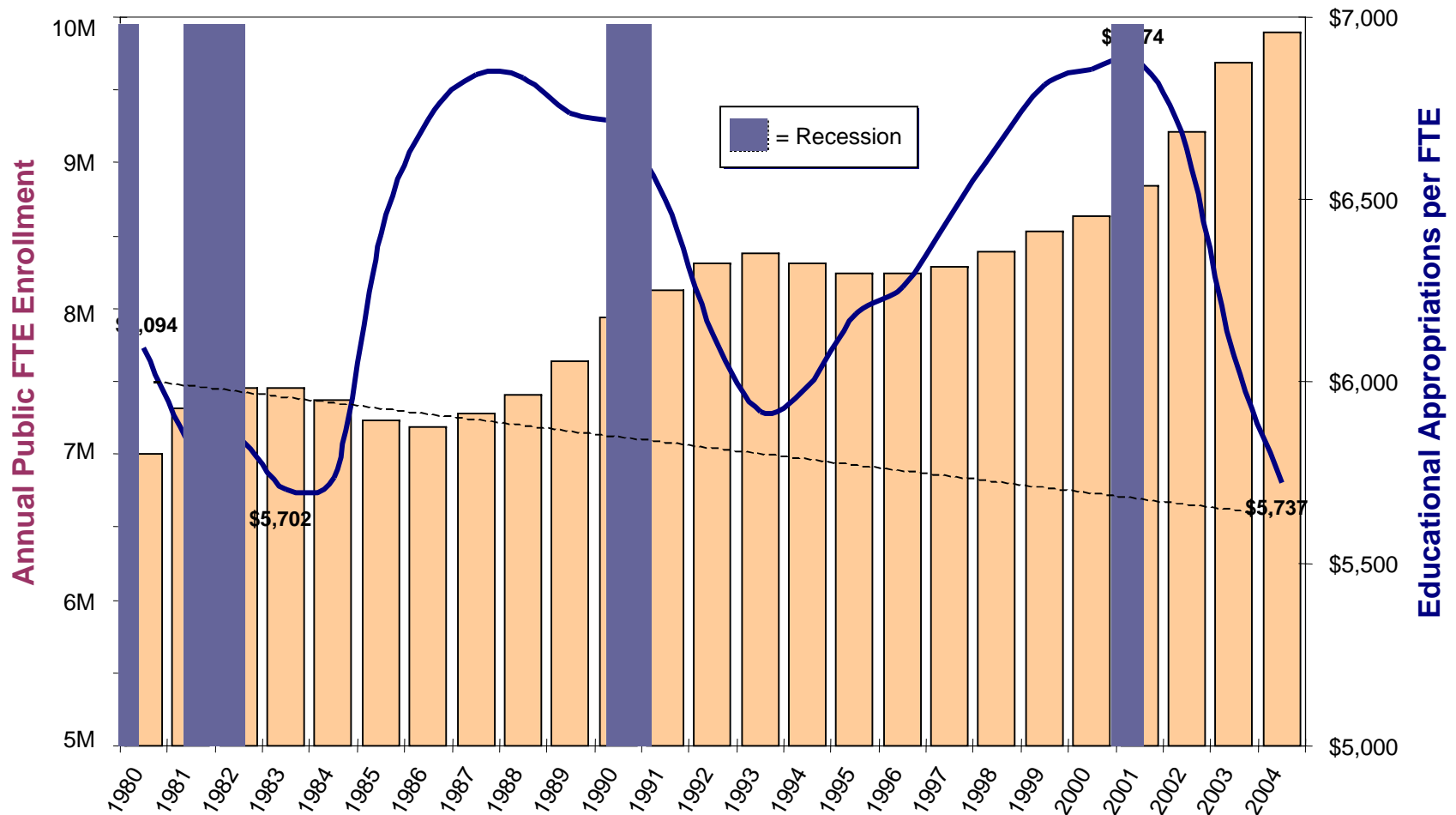
| | | SES Quartile | |
|----------------------|---------|--------------|---------|
| | | Lowest | Highest |
| Achievement Quartile | Highest | 78% | 97% |
| | Lowest | 36% | 77% |

Source: Access Denied, Department of Education, February 2001

Figure 2

State & local support per student, 1980-2004

U.S. Public Higher Education Enrollments and State & Local Support per FTE, Fiscal 1980-2004
(Constant 2004 dollars adjusted by SHEEO Higher Education Cost Adjustment)



Note: State and local government support, excluding research, agricultural, and medical.

Source: SHEEO SHEF

Figure 3

Educational revenues per FTE, 14 years

Total Educational Revenues per FTE by Component, U.S., Fiscal 1991-2004
(Constant 2004 dollars adjusted by SHEEO Higher Education Cost Adjustment)

