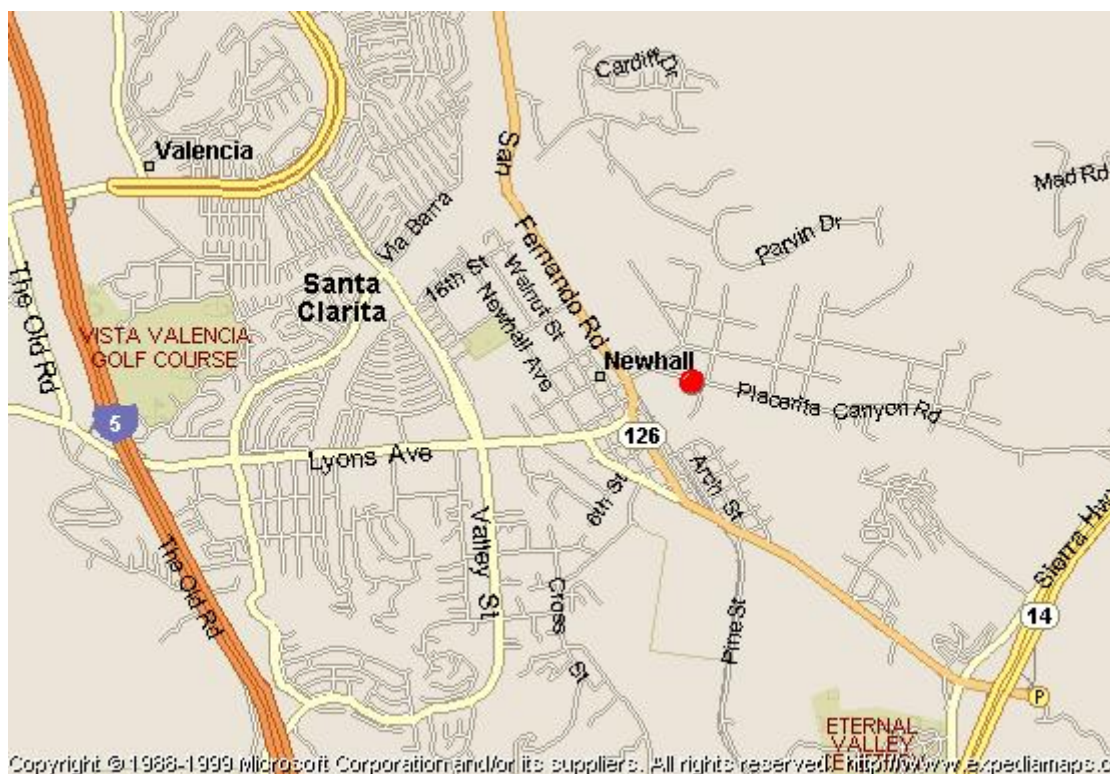


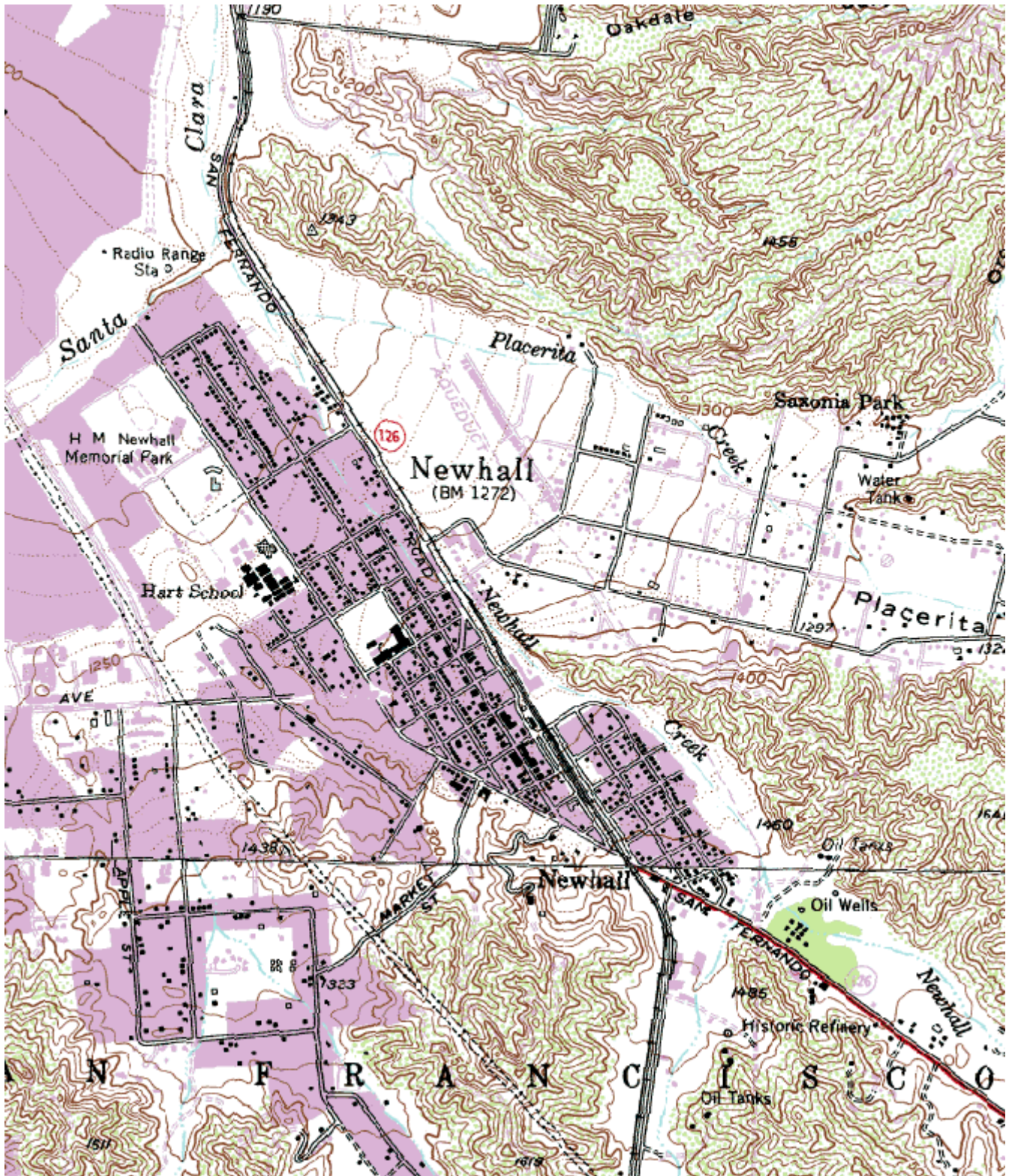
Quality Assurance Site Information for Santa Clarita-Placerita

This page updated February 10, 2005



AIRS Number	ARB Number	Site Start Date	Reporting Agency and Agency Code
060376012	70090	1999-01-01	South Coast AQMD (061)

Site Address	County	Air Basin	Latitude	Longitude	Elevation
22224 Placerita Canyon, Santa Clarita CA 91321	Los Angeles	South Coast	34° 23' 0"	118° 31' 42"	375



Site Survey Report

Siting Information

Site Name: Santa Clarita-Placerita	Audit Date: 2006-08-08	ARB Number: 70090	AIRS Number: 060376012
Address: 22224 Placerita Canyon Santa Clarita, CA 91321	Latitude: 34° 23' 0"	Longitude: 118° 31' 42"	Elevation (m): 375
	Auditors: Long Liu Alvin Danque	Site Technician: Rick Morales	Site Phone:
Operating Agency: South Coast AQMD		Site Report: Yes	Site Photos: Yes

General Siting Conditions

Station Temperature Controlled: Yes Recorded: Yes Inside Temp: 25 Degrees Celsius	Traffic Description: Residential Distance: 40 meters Count (Veh/Day): 1000	Topography Site: Level Region: Hilly	Predominant Wind Direction: Southeast
			Arc Air Flow (Deg): 360 Degrees
		Meteorology Located With Instruments: Yes Shadowing: Yes Boom Orientation (Deg): 360 Temp(Motor/Natural): Natural	Non-vehicular Local Sources Description: None Distance: N/A Direction: N/A
Urbanization: Suburban Ground Cover: Asphalt	Manifold Clean: Yes		
	Cleaning Schedule: Annually		
	Autocalibrator Type: Environics 9100		
Site Survey Complete: Yes			
Logbook Up To Date: Yes			

Action Items

Comments

Site Survey Report (Cont.)

Monitor Type	Carbon Monoxide	Nitrogen Dioxide	Ozone	PM10-SSI
Manufacturer/Model	Horiba APMA-360	API 200	API/Teledyne 400	Sierra Anderson 1200
Serial Number	0016213	E000217	4000E	010374
POC	1	1	1	1
Data For Record?	Yes	Yes	Yes	Yes
Purpose				
Objective				
Scale				
Height Above Ground	4.5	4.5	4.5	2.7
Height Above Platform	1.9	1.9	1.9	1.5
Sampler Spacing				
Current Manual Available?	Yes	Yes	Yes	Yes
Instrument Log Up-to-date?	Yes	Yes	Yes	Yes
In-line Filter Change Date	2006-08-01	2006-08-08	2006-08-08	
Cal. Gas Cert. Date	2005-07-06	2005-07-06		
Calibration Current?	Yes	Yes	Yes	Yes
Calibration Date	2006-03-10	2006-03-29	2006-03-10	2006-05-03
Cal. Equipment Cert. Date	2006-03-10	2006-03-10	2006-03-10	2006-01-06
Obstacle Description	None	None	None	None
Distance to Obstacle	-	-	-	-
Height Above Inlet	-	-	-	-
Distance to Walls, etc.	-	-	-	-
Distance to Dripline	-	-	-	-
Dominant Influence	Vehicular	Vehicular	Vehicular	Vehicular
Residence Time (sec)	13.1	13.0	10.4	

Site Survey Report (Cont.)

Monitor Type	Barometric Pressure
Manufacturer/Model	MET ONE 090C-26/32
Serial Number	W1729
POC	
Data For Record?	No
Purpose	
Objective	
Scale	
Height Above Ground	2.5
Height Above Platform	
Sampler Spacing	
Current Manual Available?	Yes
Instrument Log Up-to-date?	Yes
In-line Filter Change Date	
Cal. Gas Cert. Date	
Calibration Current?	No
Calibration Date	Not Available
Cal. Equipment Cert. Date	Not Available
Obstacle Description	None
Distance to Obstacle	-
Height Above Inlet	-
Distance to Walls, etc.	
Distance to Dripline	
Dominant Influence	
Residence Time (sec)	