

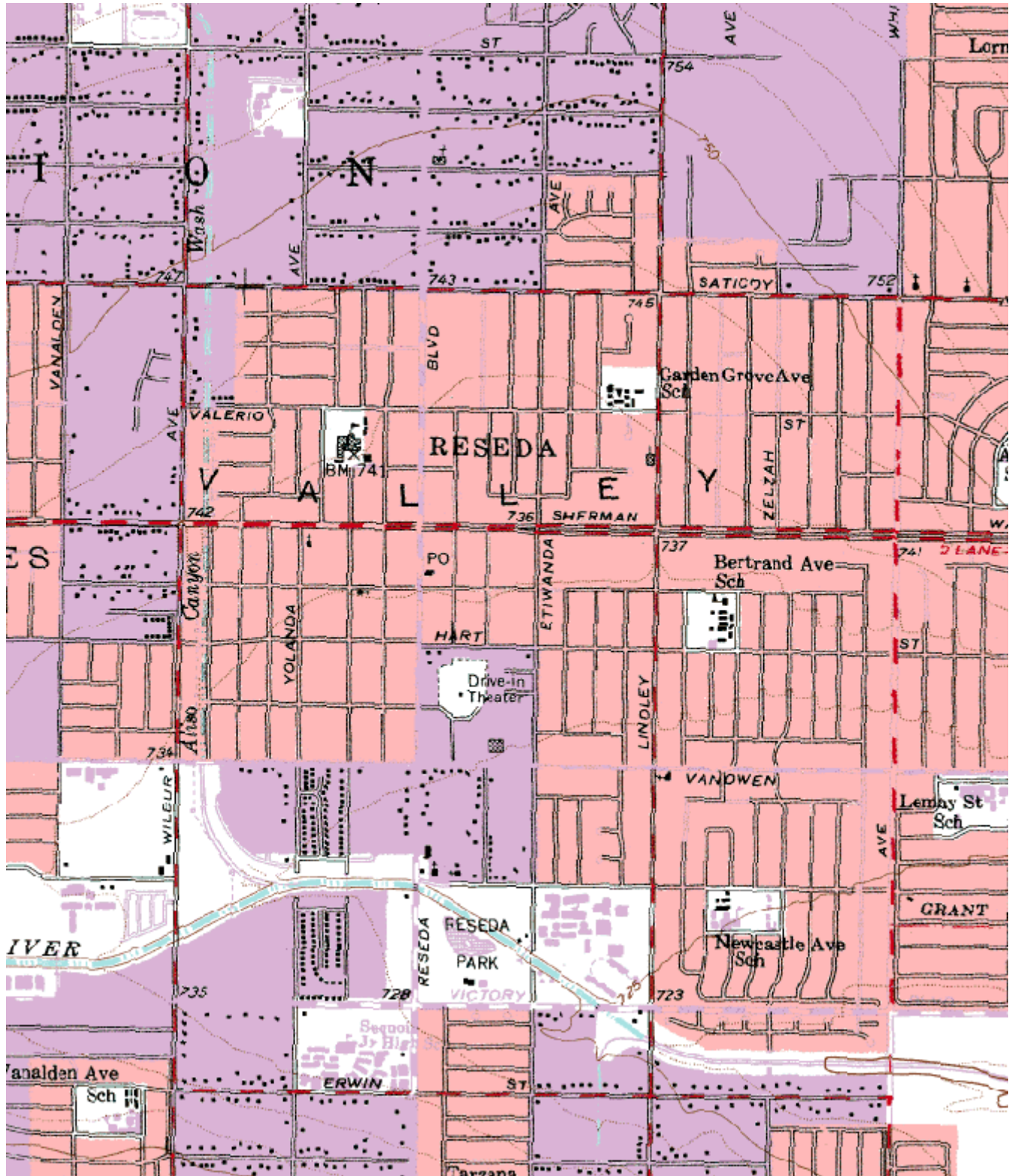
## Quality Assurance Site Information for Reseda

*This page updated February 10, 2005*



AIRS Number	ARB Number	Site Start Date	Reporting Agency and Agency Code
060371201	70074	1/1/73	South Coast AQMD (061)

Site Address	County	Air Basin	Latitude	Longitude	Elevation
18330 Gault St, Reseda CA 91702	Los Angeles	South Coast	34° 11' 57"	118° 31' 58"	69



# Site Survey Report

## Siting Information

Site Name: Reseda	Audit Date: 2006-12-14	ARB Number: 70074	AIRS Number: 060371201
Address: 18330 Gault St Reseda, CA 91702	Latitude: 34° 11' 57"	Longitude: 118° 31' 58"	Elevation (m): 69
	Auditors: Don Fitzell	Site Technician: John Quickley	Site Phone:
Operating Agency: South Coast AQMD		Site Report: Yes	Site Photos: Yes

## General Siting Conditions

<b>Station Temperature</b>  Controlled: Yes  Recorded: Yes  Inside Temp: 25 Degrees Celsius	<b>Traffic</b>  Description: Arterial  Distance: 275 meters  Count (Veh/Day): 60000	<b>Topography</b>  Site: Valley  Region: Valley	Predominant Wind Direction: West  Arc Air Flow (Deg): 360 Degrees  Probe Clean: N/A
		<b>QA Manual</b>  Approved: Yes  Agency: South Coast AQMD  Urbanization: City Center  Ground Cover: Asphalt	Manifold Clean: N/A  Cleaning Schedule: N/A  Autocalibrator Type: N/A
			Site Survey Complete: Yes  Logbook Up To Date: Yes
<b>Meteorology</b>  Located With Instruments: Yes  Shadowing: No  Boom Orientation (Deg): N/A  Temp(Motor/Natural):	<b>Non-vehicular Local Sources</b>  Description: Light Industry  Distance: 60 meters  Direction: E-S-W		

## Action Items

## Comments

## Site Survey Report (Cont.)

Monitor Type	PM2.5
Manufacturer/Model	Andersen 300
Serial Number	00274
POC	1
Data For Record?	Yes
Purpose	
Objective	
Scale	
Height Above Ground	5.6
Height Above Platform	1.9
Sampler Spacing	
Current Manual Available?	Yes
Instrument Log Up-to-date?	Yes
In-line Filter Change Date	
Cal. Gas Cert. Date	
Calibration Current?	Yes
Calibration Date	2006-09-06
Cal. Equipment Cert. Date	Not Available
Obstacle Description	Palm trees
Distance to Obstacle	13.0
Height Above Inlet	13.0
Distance to Walls, etc.	-
Distance to Dripline	-
Dominant Influence	Vehicular
Residence Time (sec)	