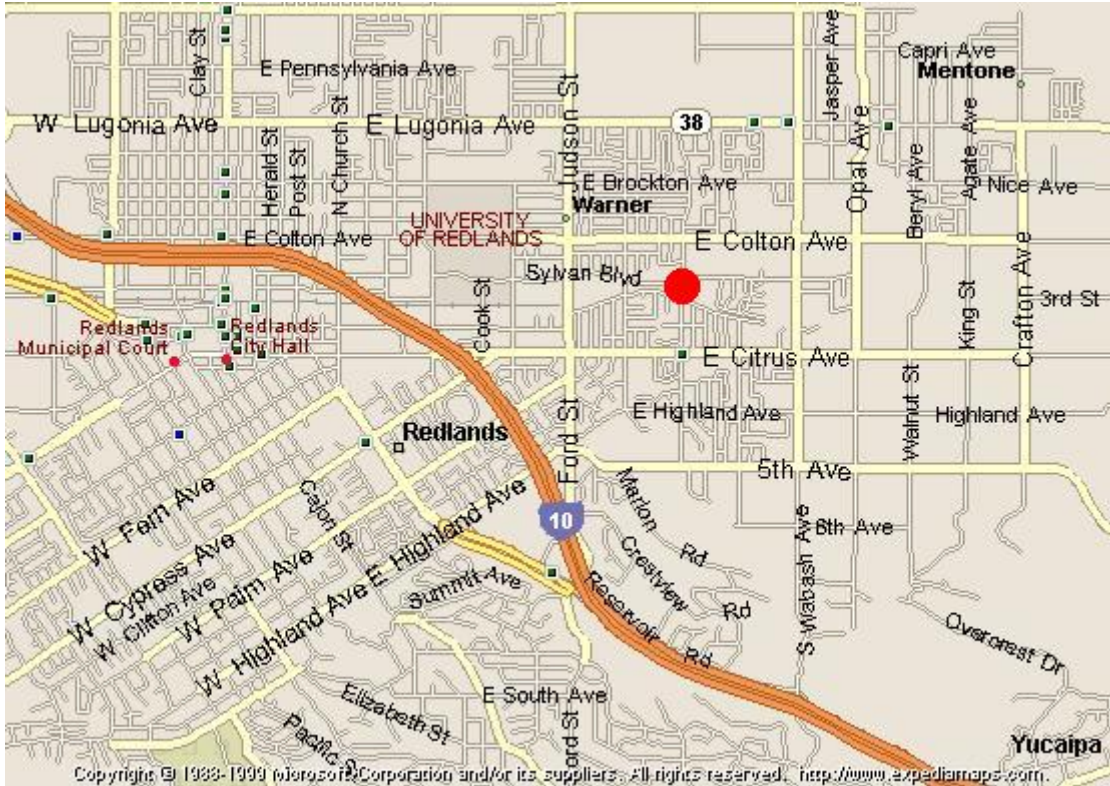


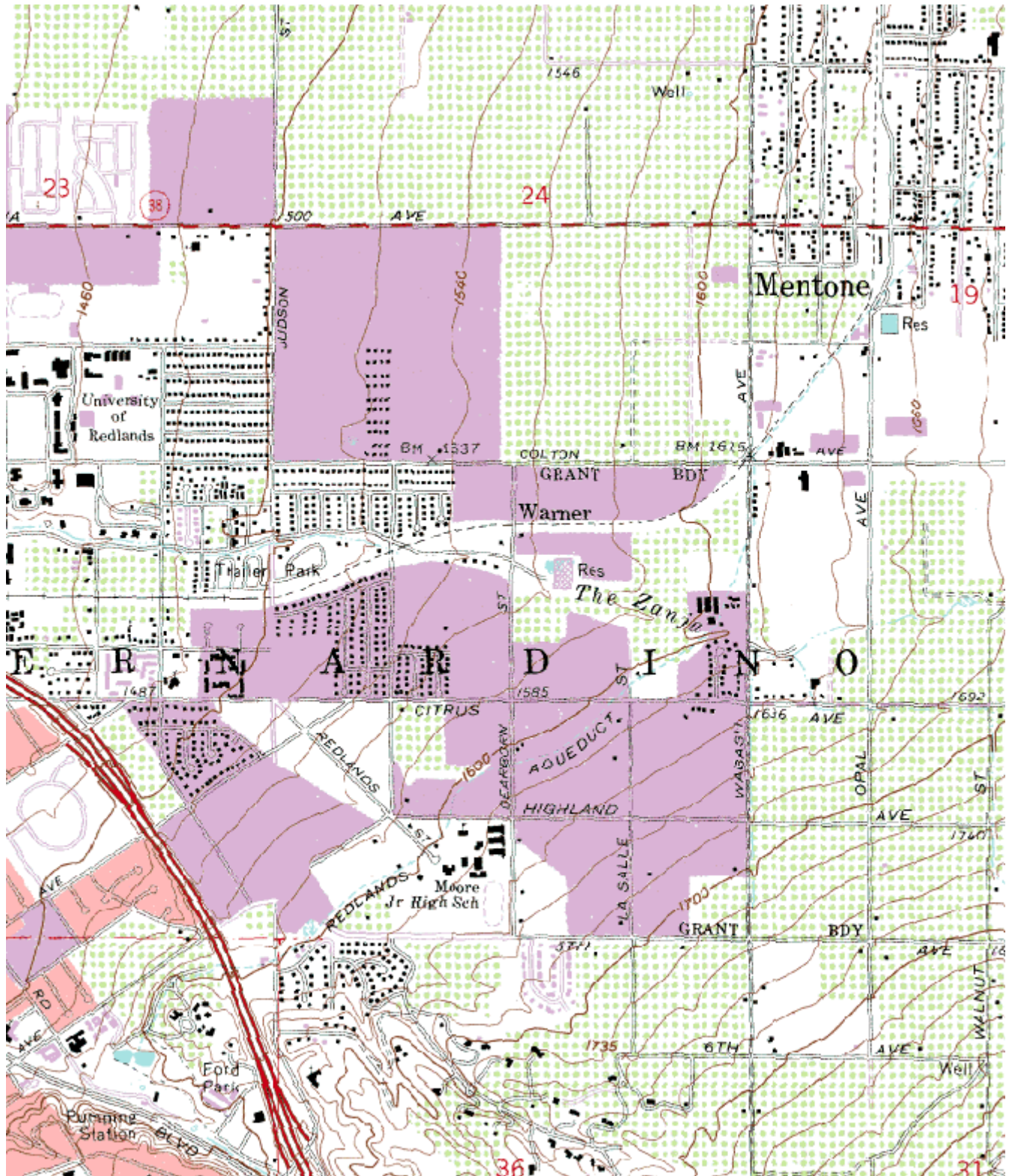
Quality Assurance Site Information for Redlands

This page updated February 10, 2005



AIRS Number	ARB Number	Site Start Date	Reporting Agency and Agency Code
060714003	36204	9/1/86	South Coast AQMD (061)

Site Address	County	Air Basin	Latitude	Longitude	Elevation
500 N. Dearborn, Redlands CA 92374	San Bernardino	South Coast	34° 3' 32"	117° 8' 52"	481



Site Survey Report

Siting Information

Site Name: Redlands	Audit Date: 2006-08-07	ARB Number: 36204	AIRS Number: 060714003
Address: 500 N. Dearborn Redlands, CA 92374	Latitude: 34° 3' 32"	Longitude: 117° 8' 52"	Elevation (m): 481
	Auditors: Harnek Nijjar Fred Burriell	Site Technician: Eric Trinn	Site Phone:
Operating Agency: South Coast AQMD		Site Report: Yes	Site Photos: Yes

General Siting Conditions

Station Temperature Controlled: Yes Recorded: Yes Inside Temp: 25 Degrees Celsius	Traffic Description: Residential Distance: 20 meters Count (Veh/Day): 1000	Topography Site: level Region: level	Predominant Wind Direction: North Arc Air Flow (Deg): 180 Degrees
		QA Manual Approved: Yes Agency: SCAQMD	Probe Clean: Yes
			Manifold Clean: Yes Cleaning Schedule: As Needed
Meteorology Located With Instruments: Yes Shadowing: No Boom Orientation (Deg): N-S Temp(Motor/Natural):	Non-vehicular Local Sources Description: dirt Distance: 0 meters Direction: NESW	Urbanization: Suburban	Autocalibrator Type: Environics 100
		Ground Cover: Gravel	Site Survey Complete: Yes
		Logbook Up To Date: Yes	

Action Items

Comments

Site Survey Report (Cont.)

Monitor Type	Ozone	PM10-SSI
Manufacturer/Model	API/Teledyne 400	Andersen SA1200
Serial Number	525-S	4939
POC	1	1
Data For Record?	Yes	Yes
Purpose		
Objective		
Scale		
Height Above Ground	4.0	2.0
Height Above Platform	1.0	1.5
Sampler Spacing		
Current Manual Available?	Yes	Yes
Instrument Log Up-to-date?	Yes	Yes
In-line Filter Change Date	2006-08-28	
Cal. Gas Cert. Date		
Calibration Current?	Yes	Yes
Calibration Date	2006-05-16	2006-06-02
Cal. Equipment Cert. Date	Not Available	Not Available
Obstacle Description	Trees	Trees
Distance to Obstacle	15.0	15.0
Height Above Inlet	0.0	0.0
Distance to Walls, etc.	20.0	20.0
Distance to Dripline	2.0	15.0
Dominant Influence	Vehicular	Residential
Residence Time (sec)	8.0	