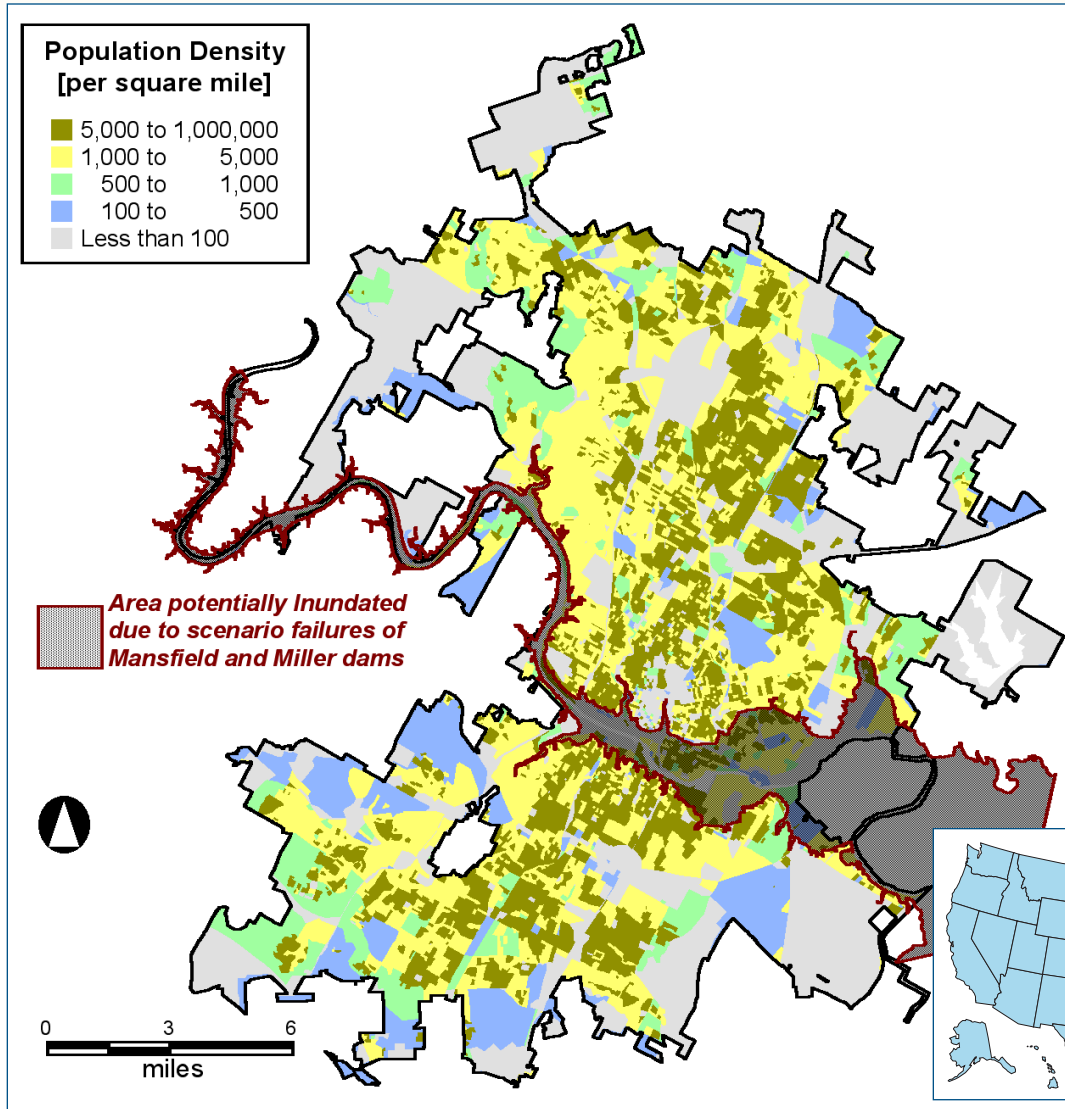


# Population Potentially Exposed to Dam Failure in Austin, Texas



## POTENTIAL USES

### Pre-Disaster:

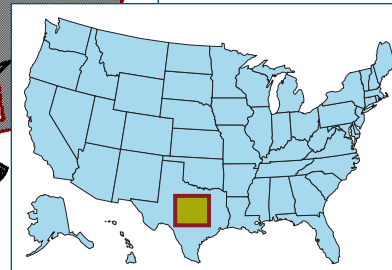
- Identification of population and property potentially exposed to the failure of Mansfield and Miller dams in Austin, Texas (GIS inventory).
- Characterization of population potentially exposed, including elderly and low-income. Identification of essential facilities in the inundation area (GIS inventory).
- Incorporation of HAZUS-MH analysis into evacuation and shelters planning.

### Post-Disaster:

- Identification and quantification of population at risk from the failure of Miller and/or Mansfield dams.
- Identification and implementation of appropriate protective measures, including warning, evacuation, and sheltering.

## DATA AND ANALYSIS DISPLAYED:

- Population density for Austin, TX, derived from U.S. Census data (2004).
- Flood inundation boundaries for breach of Mansfield and Miller dams (information provided by the Lower Colorado River Authority).



**FEMA**