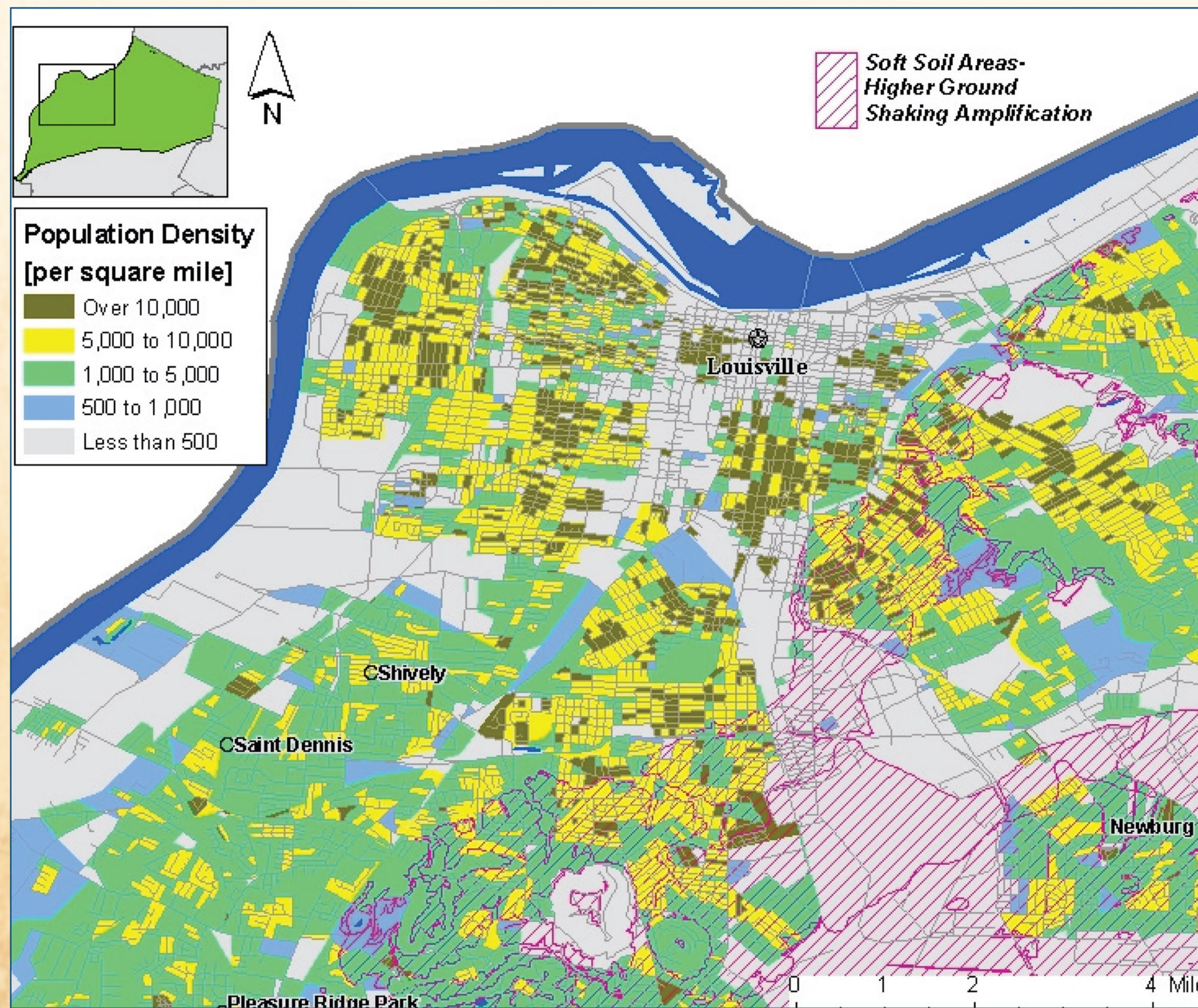


# Population Density in Louisville, Kentucky in Relation to the Earthquake Hazard



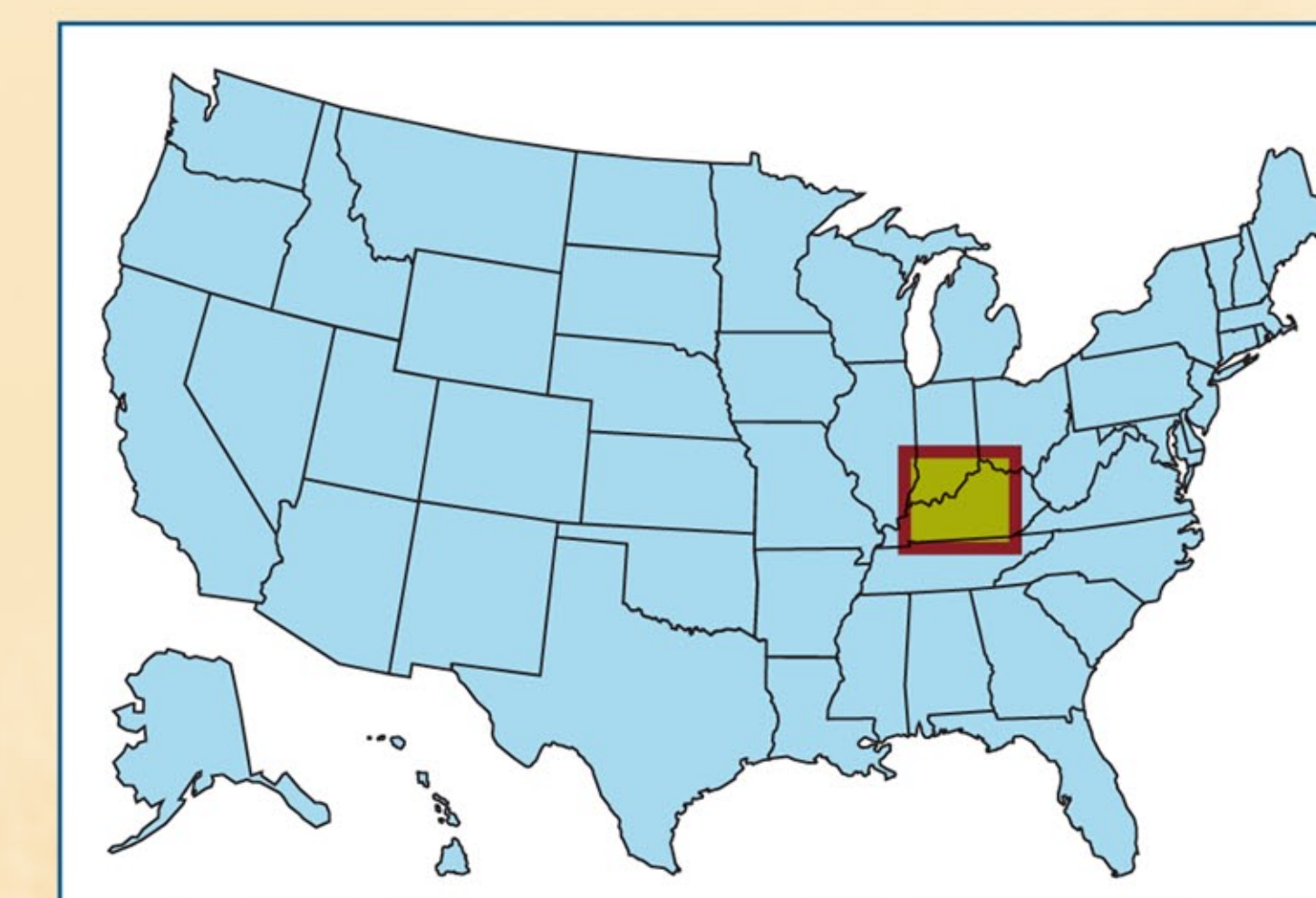
## POTENTIAL USES

### Pre-Disaster:

- Evaluation of options for future development in Louisville — residential, commercial and industrial — in relation to potential soil liquefaction zones.
- Assessment of population in areas of Louisville that are characterized by soft soils that may amplify ground shaking in an earthquake.

### Post-Disaster:

- Quick assessment of residential dollar losses from scenario earthquakes in Louisville.
- Assessment of the population that is potentially impacted by ground failure from earthquakes.



## DATA AND ANALYSIS DISPLAYED:

- Distribution of population in Louisville, KY in relation to the earthquake hazard.
- Location of soft soil areas that amplify ground shaking.



FEMA