



**National Park Service
U.S. Department of the Interior**

**Superintendent's Compendium
Of Designations, Closures, Permit
Requirements and Other Restrictions Imposed
Under Discretionary Authority.**

**Acadia National Park
and
St. Croix Island
International Historic
Site**

P.O. Box 177
Bar Harbor, ME 04609

207-288-3338 phone
207-288-8792 fax

Approved:

/s/ Sheridan Steele 1/2/08
Sheridan Steele, superintendent

In accordance with regulations and the delegated authority provided in Title 36, Code of Federal Regulations ("36 CFR"), Chapter 1, Parts 1-7, authorized by Title 16 United States Code, Section 3, the following regulatory provisions are established for the proper management, protection, government and public use of those portions of Acadia National Park under the jurisdiction of the National Park Service. Unless otherwise stated, these regulatory provisions apply in addition to the requirements contained in 36 CFR, Chapter 1, Parts 1-7.

Written determinations, which explain the reasoning behind the Superintendent's use of discretionary authority, as required by Section 1.5(c), appear in this document identified by italicized print.

I. 36 CFR §1.5 – VISITING HOURS, PUBLIC USE LIMITS, CLOSURES, AND AREA DESIGNATIONS FOR SPECIFIC USE OR ACTIVITIES

Note: Violations under this section should be cited under §1.5(f).

(a)(1) The following visiting hours, public use limits, and closures are established for Acadia National Park and St. Croix Island International Historic Site:

Hours of Operation

Hours of operation are general closures and do not take into account special use permits signed by the superintendent, registered guests, or park-sponsored events. **For the purposes of enforcement, dark is defined as the time between one hour after sunset and one hour before sunrise.**

The following areas are closed to motor vehicles at dark:

- **Carroll Homestead**
- **Lake Wood**
- **Thompson Island Picnic Area**

Bass Harbor Head Lighthouse and Parking Lot are closed to all visitors and to motor vehicles at dark.

St. Croix Island International Historic Site is closed to motor vehicles from 6:00 p.m. to 6:30 a.m. and to all visitors at dark.

Determinations: The Bass Head Harbor Lighthouse is closed to motor vehicles and to visitors at dark to provide privacy for the family living in the lighthouse. To protect natural and archeological resources at St. Croix Island International Historic Site, the park is closed to motor vehicles when staff is not on site. Carroll Homestead, Lake Wood, Thompson Island Picnic Area, and St. Croix Island IHS are closed at

dark to deter underage drinking, vandalism and damage to resources, disorderly conduct, and out of bounds camping.

Closures:

Roads:

Bass Harbor Head Road is closed to vehicles longer than 20 feet and to trailers.

The southern end of **Schooner Head Road**, also known as **Great Head Road**, between the Schooner Head Overlook intersection and Great Head Parking Lot is closed to vehicles longer than 20 feet and to trailers.

Determinations: The parking lot at Bass Harbor Head Lighthouse is too small to provide adequate turn around space for large vehicles and vehicles with trailers. Parking spaces are 20 feet long. Traffic congestion prohibits alternatives such as double or parallel parking.

The southern end of Schooner Head Road does not provide adequate turn-around room for vehicles longer than 20 feet. Visitors in recreational vehicles and in buses that are interested in hiking the Great Head Trail may hike from the Schooner Head Overlook Parking Lot to the Great Head Trailhead. The trail may also be accessed by way of Sand Beach, where parking is available along Park Loop Road.

Sargent Drive is closed to buses and recreational vehicles (RVs).

Determination: Sargent Drive (also spelled Sergeant Drive on some maps and signs) is too narrow to accommodate large vehicles on this two-way road. This is a town of Mount Desert regulation on a town-owned road. It is provided here for informational purposes only.

Duck Harbor Brook Road and **Western Head Road** on Isle au Haut are closed to all unauthorized motor vehicles.

Determinations: The Duck Harbor Brook Road closure ensures the low intensity use described in P.L. 97-335, and a higher degree of solitude and natural quiet appropriate for this remote island unit of Acadia. Both of these roads are dead end roads and neither provides adequate space for the public to turn their vehicles around. Both roads are rugged and are not regularly maintained, and neither road is wide enough to permit two-way traffic.

During hours of operation, **the parking lot at Thompson Island Chamber of Commerce/Visitor Contact Station** is limited to 1 hour parking from May 15 to October 15. Overnight parking is prohibited year round.

Determination: Visitor parking at this first visitor contact station is limited during the busy peak visitor season.

In accordance with 36 CFR § 5.6, **All Park-Owned Roads** are closed to commercial vehicles, with the following exceptions:

- Commercial buses on the Park Loop Road, Cadillac Mountain Road, Paradise Hill Road, and associated parking lots and pull outs
- Commercial buses traveling directly to and from SERC for SERC-related activities and events is permitted. Commercial buses are otherwise prohibited on Moore Road, East Schoodic Drive and the Schoodic Point Road.

- Concession-operated vehicles used to transport passengers, merchandise, equipment, and food
- Commercial vehicles making deliveries to the park and concessions
- Park-contracted commercial vehicles operating within the scope of their work
- Partner service and authorized vendor vehicles
- Commercial Use Authorization holders conducting authorized business

Determination: Park roads are not rated nor suited for heavy and large equipment. Commercial vehicles may detract from the natural scenery and contribute to noise and air pollution. There are no parking areas available to commercial buses in the Schoodic area except on the SERC campus.

Man of War Brook Fire Road, Wonderland Road, and Valley Cove Fire Road are closed to motor vehicles.

Hio Fire Road and Marshall Brook Fire Road are closed to motor vehicles except snowmobiles.

Determination: These roads are closed to provide for alternative recreational opportunities, such as bird watching, bicycling, cross country skiing, dog walking, and snowshoeing without the negative impacts associated with motorized vehicle use. The Hio Fire Road closure protects the quiet atmosphere at Seawall Campground by allowing vehicle access only to registered campers and their guests.

The following are seasonal road closures:

Location	Opening Date	Closing Date
Beech Mountain Road Parking Area	April 15	December 1
Cadillac Mountain	April 15	December 1
Paradise Hill Road	April 15	December 1
Park Loop Road (excluding the section between the Entrance Station at Schooner Head Road and the intersection with Otter Cliff Road at Fabbri Picnic Area, which is open year round except as noted below)	April 15	December 1
Stanley Brook Road	April 15	December 1
Duck Brook Road from Duck Brook Bridge to West Street Extension	April 15	December 1
Southern end of Schooner Head Road, (Great Head Road)	April 15	December 1
Great Meadow Drive, (Ledgelawn Avenue Extension) (the park-owned section only)	April 15	December 1
Kebo Street (the park-owned section only)	April 15	December 1
West Street Extension (the park-owned section only)	April 15	December 1
Blackwoods Campground Road	April 1	December 1
Seawall Campground Road	Wednesday before Memorial Weekend	October 1
All Gravel Roads	May 15	November 15
St. Croix Island International Historic Site Entrance Road	April 15	Veterans Day Weekend

Notes: Park roads may not be open on the dates shown if snow, ice or other weather variables create unsafe travel conditions for motor vehicles or where travel results in excessive damage to road surfaces in the case of gravel roads. The superintendent authorizes emergency closures to roadways throughout the year as needed to provide for the safety and welfare of the visiting public.

Cadillac Mountain Road, Paradise Hill Road, Park Loop Road, Duck Brook Road, Stanley Brook Road, Seawall Campground, and the park-owned sections of Great Meadow Drive, Kebo Street, and West Street Extension are open to snowmobile use during the closure periods.

Determinations: Roads are closed to vehicle use on the dates shown due to the increased probability of ice, snow, rock falls and downed trees. During periods of ice, snow, emergency or other hazardous conditions including inclement weather, road construction, maintenance or other cause, park roads may be closed to insure public safety and resource protection. Gravel roads are closed in the spring until the roads dry and harden enough to support vehicle traffic. They are closed in the fall to deter roadside poaching and to open routes for snowmobile use.

The one-way section of **Park Loop Road** is closed seasonally from the Paradise Hill Road to Otter Cliff Road (traveling clockwise) from dark to 7:00 a.m. The closure begins at the start of State of Maine Deer Hunting Season for rifles and extends through to December 1.

The southern end of **Schooner Head Road**, also known as **Great Head Road**, between the Schooner Head Overlook intersection and Great Head Parking Lot, is closed seasonally from dark to 7:00 a.m. The closure begins at the start of State of Maine Deer Hunting Season for rifles and extends through to December 1.

Determination: Deer favor the browse and topography along these sections of roadway. To deter roadside poachers from illegally hunting within the park, this section of road is closed during rifle season.

With the exception of the park's carriage roads, the use of dog sleds, dog carts, and skijoring with dogs is permitted on all closed motor roads and fire roads under the following conditions:

- Dog sleds may be pulled by no more than four dogs, with a combined tow and tug line of not more than 12 feet. Sleds must be equipped with a braking system, and in the winter, with one snow hook.
- Skijorers must utilize a commercially manufactured skijor belt with quick release and tugline. The tugline should be equipped with a built-in shock cord, and may not exceed a combined length of 10'. Skijorers may use up to two dogs, which must be harnessed with either an "X" or "H" harness. A simple dog collar is not considered a harness.

Determination: Limited numbers of dog mushers and skijorers that use the park don't currently have an impact on other forms of established popular winter recreation. Many portions of the carriage road system, however, are now groomed for recreational skiers, and the set track could be damaged by these forms of recreation. To prevent the increased likelihood of conflicting uses with other park visitors and to prevent further congestion on the carriage roads, the carriage roads are closed to dog sleds, dog carts, and skijorers.

Carriage Roads:

All carriage roads are closed to motor vehicles except those sections noted in 36 CFR §7.56 that are open to snowmobiles.

Note: Carriage roads are routinely closed to all use during thaw periods. Emergency closures are posted on site and announced to the public in area newspapers.

Determination: The superintendent may close select carriage roads while the surfaces remain soft and muddy during the thaw periods. Significant resource damage to the historic roads occurs when they are subjected to uncontrolled visitor use at this time. Not all roads heave at the same time, so closures may affect only portions of the carriage roads.

Carriage Roads are closed to horse use between intersections 1- 8, except between junctions 7 and 8. The closure includes Witch Hole Pond Loop, the Paradise Hill Loop, and the Eagle Lake Loop (except for the area between intersections 7 and 8), and the carriage road access trail from the Visitor Center to intersection 1.

Determination: Closure of these sections of carriage roads to horses reflects historic management and will remain in effect pending reconsideration in a public planning process. Issues include potential visitor conflicts between user groups, increased maintenance costs, and safe parking and access.

Picnic Areas:

Location	Opening Date	Closing Date
Thompson Island Picnic Area	April 15	November 15
Bear Brook Picnic Area	May 15	October 15
Pretty Marsh Picnic Area	June 1	October 15

Determination: Picnic areas are closed to vehicles during the off-season due to low visitor demand and to limited staffing levels that do not allow for trash collection and cleaning of restrooms. Buildings are closed for the winter because of freeze damage and the expense associated with winter operations.

Campgrounds:

Location	Opening Date	Closing Date
Blackwoods Campground Individual Sites	Open Year Round (See notes below)	--
Blackwoods Campground Group Sites	May 15	October 15
Seawall Campground, Individual and Group Sites	Wednesday before Memorial Weekend	October 1
Duck Harbor Campground, Isle au Haut	May 15	October 15

Notes: From April 1 through November 30, camping permits are obtained at the campground. Flush toilets are open at this time. Only a portion of the campground is open in early spring and late fall.

The park allows primitive camping at Blackwoods Campground from December 1 through March 31. During that time period, campers must first obtain a camping permit from the park dispatch office at park headquarters. The campground entrance road is closed to automobiles from December 1 through March 31; campers are permitted to park in front of the closed gate and are required to hike in from the campground entrance. Only vault toilets are available during the off-season.

Determination: Seawall and Duck Harbor Campground facilities are closed to campers during the off-season due to significantly decreased visitor demand, and limited staffing levels that do not allow for trash collection and cleaning of restrooms. Buildings are closed for the winter because of potential for freeze damage and the expense associated with winter operations. The park cannot incur the expenses needed to keep all campground facilities open year-round.

Attractions and Facilities:

Location	Opening Date	Closing Date
Carroll Farm	May 15	November 1
Echo Lake Beach	April 15	December 1
Lake Wood	June 1	October 15
Wildwood Stables Parking Area	May 1	December 1

Determination: These sites are closed in the off-season to vehicle access due to significantly decreased visitor demand, staffing limitations, no trash collection, and no cleaning staff. Buildings are closed for the winter because of the potential for freeze damage and due to operational costs associated with winter use.

Wildwood Stables operation period has been extended to accommodate horseback riders further into the year.

Surfing at Sand Beach is permitted from September 16 through May 14.

Determination: Per 36 CFR §3.22 Surf Boards and similar devices are prohibited during periods that Sand Beach is a designated swim beach. Sand Beach is a designated swim beach from May 15 to September 15.

The Cadillac Repeater Tower Site enclosure is closed to the public.

Determination: The Cadillac towers support radio transmissions for a host of all-risk agencies that serve MDI and the region. Damage to the infrastructure would be costly to repair and could impact timely responses to life threatening situations.

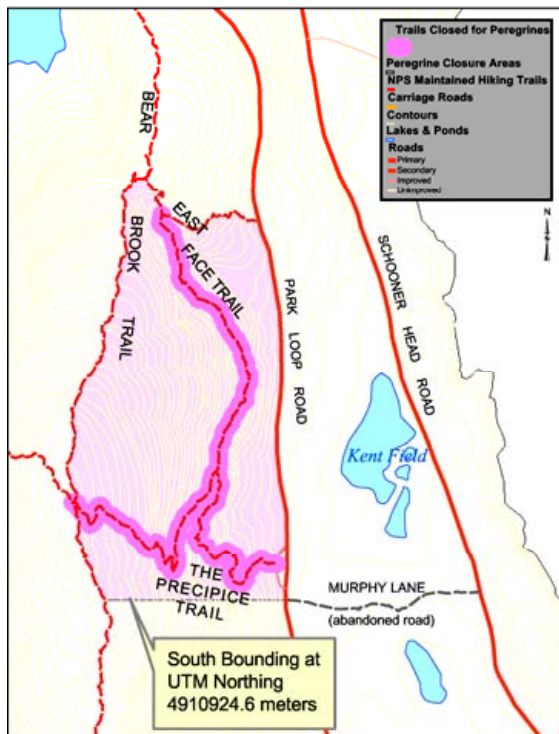
The park firing range, located off Route 3, is closed to the public. The closure encompasses the area 100 yards north and south from the center of the target line, and the area 125 yards west from the Boyd Pit Road.

Determination: The firing range and environs are closed to the public for reasons of public safety. The closure is marked by signs.

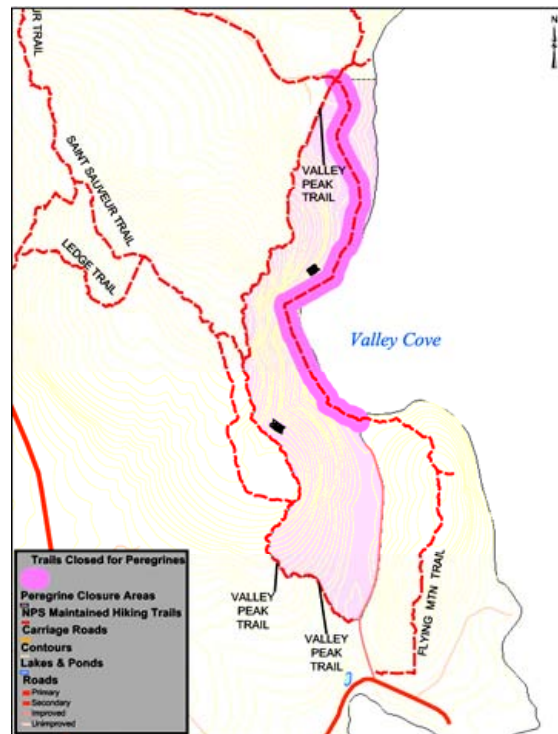
Mount Desert Island Trails and Environs:

Location of Closure	Date of Closure
<p>Precipice Wall: The area encompassed by Park Loop Road, East Face Trail, Bear Brook Trail, and the southern boundary noted as the east/west line from 75 feet south of the Precipice Parking Lot on the Park Loop Road (at the Murphy Lane) west to the Bear Brook Trail is closed to public use.</p> <p>The Precipice Trails and a portion of the Champlain / East Face Trail are included in this closure. Bear Brook Trail is open to visitor use year-round.</p>	<p>March 15 – August 15 [Or opened earlier if falcons are not nesting on the cliff, as determined by the park wildlife biologist]</p>

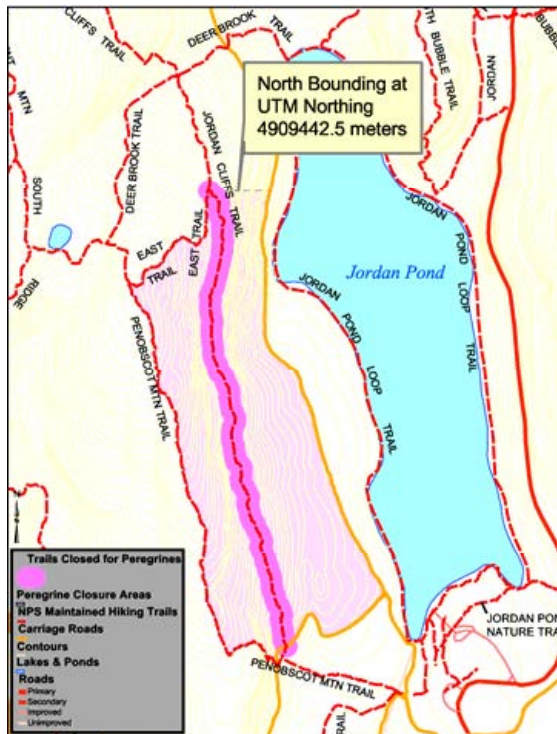
<p>Valley Cove Wall: The area encompassed by Valley Peak Trail, Flying Mountain Trail, and Valley Cove Fire Road is closed to public use.</p> <p>The Flying Mountain Trail between the Valley Cove Fire Road and the Man of War Brook Fire Road is included in this closure. All other perimeter trails, including Valley Peak Trail, and roads in the vicinity are open year round to visitor use.</p>	<p>March 15 – August 15 [Or opened earlier if falcons are not nesting on the cliff, as determined by the park wildlife biologist]</p>
<p>Jordan Cliffs: The area encompassed by Penobscot Mountain Trail, Penobscot East Trail, the carriage road on the west side of Jordan Pond, and the carriage road from Intersection 14 to Penobscot Mountain Trail is closed to the public. A line east of the Penobscot East Trail and Jordan Cliffs trail intersection marks the northern boundary of the closure.</p> <p>The Jordan Cliffs Trail is included in this closure. The perimeter trails and carriage roads are open to public use year round.</p>	<p>March 15 – August 15 [Or opened earlier if falcons are not nesting on the cliff, as determined by the park wildlife biologist]</p>
<p>Beech Cliffs: The area encompassed by Beech Cliffs Trail, the east side of the northern-most section of Beech Cliff Loop Trail, south of an unmarked line that runs due east from the north-most point of the Beech Cliff Loop Trail, and 50 feet west of the shore of Echo Lake to the terminus of the Beech Cliffs Trail near Echo Lake Beach is closed to public use.</p> <p>The trails themselves are open year round to visitor use.</p>	<p>March 15 – August 15 [Or opened earlier if falcons are not nesting on the cliff, as determined by the park wildlife biologist]</p>



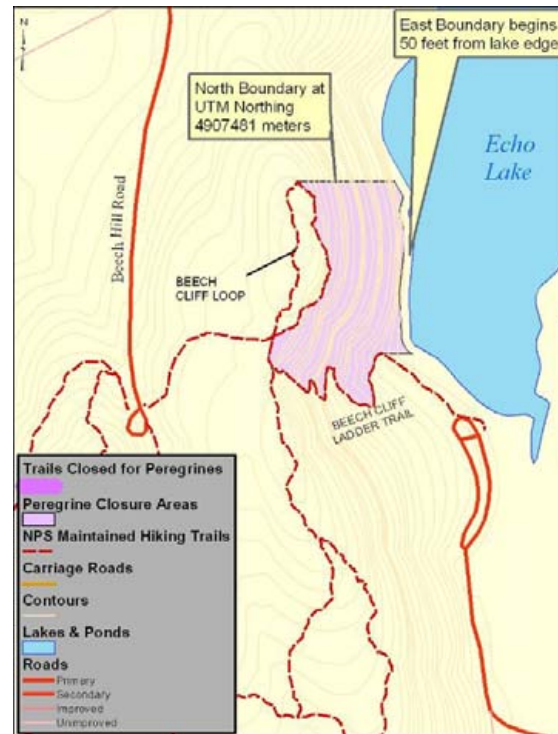
Precipice



Valley Cove



Jordan Cliffs



Beech Cliffs

Determinations: These cliffs and surrounding areas are used by peregrine falcons, a state-listed endangered species. The cliffs are used for nesting and rearing the young fledglings. Peregrine falcons are very sensitive to human disturbance near the nest site.

St. Croix Island International Historic Site:

Commercial use is prohibited on the St. Croix Island NPS portion of St. Croix Island International Historic Site.

Note: Boats cannot depart Canadian shores and proceed directly to St. Croix Island without clearing U.S. Customs at the nearest port of entry (Calais, Robbinston, Eastport, Cutler, Lubeck, or Jonesport). There are no exceptions to these reporting requirements.

Determination: St. Croix Island is a fragile, highly-erodable cultural site. Additional uses caused by commercial operations could threaten the sensitive archeological and natural resources.

Islands:

Park Land on Bear Island (near Northeast Harbor) is closed to public access.

Determination: Two acres on Bear Island are closed to the public because the lighthouse is administered under a historic lease that prohibits public access. The remainder of the island is privately owned.

Note: The following closure dates are in accordance with established federal and state wildlife management agency recommendations.

Location of Closure	Date of Closure	Determinations
Bar Island (Somes Sound)	February 15 – August 31	<i>Bar Island in Somes Sound has long been an established eagle nesting territory. Bald eagles are a state-listed threatened species under the Maine Endangered Species Act. This island is identified in the Protected Area Management Subzone of the Acadia National Park General Management Plan (GMP). The GMP states that this subzone merits the highest protection and should be managed for minimal or no human intrusion.</i>
Heron Island	April 1 – July 31	<i>The island is a documented nesting seabird island. Seabirds are easily flushed from the nest or island by human activities above the high tide level, exposing eggs to predators and weather. Seabird nests hidden in grass or on rocks are well camouflaged and easily stepped on, crushing chicks or eggs. Chicks flushed from the nest may die. This island is identified in the Protected Area Management Subzone of the Acadia National Park General Management Plan (GMP). The GMP states that this subzone merits the highest protection and should be managed for minimal or no human intrusion.</i>
Long Porcupine Island	February 15 – August 31 (Or opened once it is determined that nesting is not occurring on the island, as determined by the park wildlife biologist)	<i>Long Porcupine Island has long been an established eagle nesting territory. Bald eagles are a state-listed threatened species under the Maine Endangered Species Act. This island is identified in the Protected Area Management Subzone of the Acadia National Park General Management Plan (GMP). The GMP states that this subzone merits the highest protection and should be managed for minimal or no human intrusion.</i>
Rolling Island	February 15 – August 31	<i>Rolling Island became an eagle nesting territory in 2000. Bald eagles are a state-listed threatened species under the Maine Endangered Species Act. This island is identified in the Protected Area Management Subzone of the Draft Schoodic General Management Plan)/ Environmental Impact Statement). The Draft GMP states that this subzone merits the highest protection and should be managed for minimal or no human intrusion.</i>

Location of Closure	Date of Closure	Determinations
<p>Schoodic Island</p>	<p>February 15 – August 31 (Or opened once it is determined that nesting is not occurring on the island, as determined by the park wildlife biologist)</p>	<p><i>Schoodic Island is a documented nesting seabird island, which recently was reported to have the largest nesting population of eiders (est. 3000 pairs) and nesting petrels in Maine. Seabirds are easily flushed from the nest by human activities above the high tide level, exposing eggs to predators and weather. Seabird nests hidden in grass or on rocks are well camouflaged and easily stepped on, crushing chicks or eggs. Chicks flushed from the nest may die. This island is identified in the Protected Area Management Subzone of the Draft Schoodic General Management Plan) / Environmental Impact Statement. The draft GMP states that this subzone merits the highest protection and should be managed for minimal or no human intrusion. Schoodic Island has long been an established eagle nesting territory. Bald eagles are a state-listed threatened species under the Maine Endangered Species Act.</i></p>
<p>Sheep Porcupine Island</p>	<p>February 15 – August 31 (Or opened once it is determined that nesting is not occurring on the island, as determined by the park wildlife biologist)</p>	<p><i>Sheep Porcupine Island has long been an established eagle nesting territory. Bald eagles are a state-listed threatened species under the Maine Endangered Species Act. This island is identified in the Protected Area Management Subzone of the Acadia National Park General Management Plan (GMP). The GMP states that this subzone merits the highest protection and should be managed for minimal or no human intrusion.</i></p>
<p>Thrumcap Island</p>	<p>April 1 – July 31 (Or opened once it is determined that nesting is not occurring on the island, as determined by the park wildlife biologist)</p>	<p><i>The island is used for nesting gulls and cormorants. Seabirds are easily flushed from the nest or island by human activities that expose eggs to predators and weather. This island is identified in the Protected Area Management Subzone of the Acadia National Park General Management Plan (GMP). The GMP states that this subzone merits the highest protection and should be managed for minimal or no human intrusion.</i></p>

(a)(2) The following areas have been designated for a specific use or activity, under the conditions and/or restrictions as noted:

Camping Areas

- Blackwoods Campground
- Seawall Campground
- Duck Harbor Campground, Isle au Haut
- Long Island Easement
- (Please refer to §2.10 for detailed camping area designations and restrictions.)

Boat Launching Sites

- Eagle Lake Boat Launch
- Ikes Point Boat Launch on Echo Lake
- Jordan Pond Boat Launch
- Long Pond Boat Launch (south end at pump station)
- Red Beach Boat Launch, St. Croix Island IHS
- Seal Cove Boat Launch (unimproved)

Docking or Mooring Areas

- Frazer Point dock on Schoodic Peninsula is open to public, non-commercial use for day use only. There are no launching facilities at this location.
- Duck Harbor float on Isle au Haut is open to the public for dingy use only on the south (campground) side. The north side of the float (furthest from the campground) is available for use by the NPS and the authorized ferry service from Stonington only. There are no launching facilities at this location.

Motor Boating Areas

- Please refer to §3.6 for detailed boating restrictions

Picnic Areas

- Bear Brook Picnic Area
- Fabbri Picnic Area
- Frazer Point Picnic Area
- Pretty Marsh Picnic Area
- Red Beach Picnic Area, St. Croix Island IHS
- Seawall Picnic Area
- Thompson Island Picnic Area

Public Assembly and Meeting Areas

- Please refer to §1.6 for detailed permit requirements.
- Please refer to §2.51 for detailed area descriptions.

Snowmobiling Areas

- Please refer to §2.18 and §7.56 for detailed snowmobile area designations and use restrictions. Note that §§ 4.4, 4.12, 4.13, 4.14, 4.20, 4.21, 4.22, and 4.23 also apply to snowmobiles.

Surfing Area

- Sand Beach, from September 16 through May 14

Swimming Beaches/Areas

- Sand Beach, from May 15 through September 15
- Echo Lake Beach, from May 15 through September 15

Rock Climbing Areas

- Please note the following restrictions related to rock climbing:
- Creating new routes by installing fixed protection (including pitons), and/or cleaning routes of vegetation and soils will be permitted only with the prior written approval of the superintendent and only at these climbing areas: the Precipice Wall, the South Wall of Champlain Mountain, Jordan Cliffs, Beech Cliffs, Canada Cliffs, Great Head, Dorr Mountain (pinnacle), Enoch Mountain (upper area), and Mansell Mountain. Route development using fixed protection (including pitons) and route cleaning is prohibited at all other areas of the park.

- All organized climbing groups are limited to a maximum group size of twelve persons, including guides, and are subject to business activity regulations, 36 CFR §5.3.
- Reservations for climbing are required at Otter Cliffs for organized groups of six people or more from Memorial Day Weekend through Labor Day.
- Climbing and bouldering is prohibited on all park bridges to protect cultural resources.

Determinations: The rules listed above were implemented with the adoption of the park's Climbing Management Plan, approved in 1997. Most of the better climbing routes in the park have already been developed with fixed protection and cleaned routes. The goal is to protect park resources by managing climbing, especially on new areas. Reservations are required at Otter Cliffs to prevent multiple groups from arriving on the same day, impacting resources and visitor experiences. Groups larger than 12 can have an impact on resources and the quality of visitor experiences. All carriage road and Park Loop Road bridges are cultural resources and are either listed or nominated in the National Register of Historic Places.

The following restrictions and/or conditions are in effect for the specific uses or activities noted:

Passenger Carrying Buses (Excluding the Island Explorer Bus System)

- Engines must be shut off when not underway.

Determination: The idling of bus engines adds unnecessary exhaust fumes to the air and diminishes the enjoyment by visitors of the peace and tranquility of the park. Due to the nature of the service provided by the natural gas-powered shuttle buses, they are excluded from the requirement.

II. 36 CFR §1.6 – ACTIVITIES THAT REQUIRE A PERMIT

Note: Violations under this section should be cited under §1.6(g)(1) or (2)

(f) The following is a compilation of those activities for which a permit from the superintendent is required:

- §1.5(d) The following activities related to Public Use Limits:
 - All organized climbing groups are limited to a maximum group size of twelve persons
 - Reservations for climbing are required at Otter Cliffs for organized groups of six people or more from Memorial Day Weekend through Labor Day.
- §2.4(d) Transporting a weapon, trap, or net across park lands to access legal hunting and fishing areas requires a permit unless it is being transported by a mechanical mode of conveyance.
 - Any and all firearms transported across park lands must be unloaded, broken down, and cased
 - At no time may a firearm be discharged in a direction that causes the projectile to cross onto park lands. *Note: Violation of this regulation falls under §2.4 (a)(3)(c) The use of a weapon, trap, or net in a manner that endangers persons or property.*
 - Permittees must carry the permit on their person while in the possession of a weapon, trap, or net in the park
 - Permittees may not leave any portion of a harvested animal on park lands
 - Permits are available through the chief ranger's office
 - Please refer to Section III, Regulations §2.4 (d) WEAPONS, TRAPS, AND NETS

- § 2.5(b) Specimen collecting, research, and some science education activities.
 - Permits are available from the chief of resource management
 - Please refer to 36 CFR §2.5 RESEARCH SPECIMENS

Note: When permits are required for scientific activities pertaining solely to cultural resources, including archeology, ethnography, history, cultural museum objects, cultural landscapes, and historic and prehistoric structures, other permit procedures apply.

- § 2.10(a) Camping in designated campgrounds:
 - Blackwoods Campground
 - Seawall Campground
 - Duck Harbor Campground on Isle au Haut
 - Permits for Blackwoods and Seawall Campgrounds are available on site, except in winter (Blackwoods only).
 - Winter camping permits for Blackwoods Campground are available at the dispatch operations center in the ranger office at park headquarters
 - Permits for Duck Harbor Campground are available at park dispatch
 - Please refer to Section III, Regulations § 2.10(a) CAMPING AND FOOD STORAGE
- § 2.12 Creating Audio Disturbances:
 - (a)(2) Operating a chain saw in developed areas
 - (a)(3) Operating any type of portable motor or engine, or device powered by a portable motor or engine in non-developed areas
 - (a)(4) Operating a public address system in connection with a public gathering or special event for which a permit has been issued pursuant to § 2.50 or § 2.51
 - Permits are available through the chief ranger's office
 - Please refer to Section III, Regulations § 2.12 AUDIO DISTURBANCES
- § 2.17 Aircraft and air delivery:
 - (a)(3) Delivery or retrieval of a person or object by parachute, helicopter or other airborne means
 - (c)(1) Removal of a downed aircraft
 - Permits are available through the chief ranger's office
 - Please refer to 36 CFR § 2.17 AIRCRAFT AND AIR DELIVERY
- § 2.37 Soliciting or demanding gifts, money goods or services: (Pursuant to the terms and conditions of a permit issued under § 2.50, § 2.51 or § 2.52)
 - Please refer to 36 CFR § 2.37 NONCOMMERCIAL SOLICITING
- § 2.38 Using or possessing explosives:
 - (a) Using, possessing, storing, or transporting explosives, blasting agents
 - (b) Using or possessing fireworks
 - Permits are available through the chief ranger's office
 - Please refer to 36 CFR § 2.38 EXPLOSIVES
- § 2.50 Conducting a sports event, pageant, regatta, public spectator attraction, entertainment, ceremony, or similar events
 - Permits are available through the chief ranger's office
 - Please refer to 36 CFR § 2.50(a) SPECIAL EVENTS
- §2.51 Conducting a public assembly, meeting, gathering, demonstration, parade or other public expression of views
 - Permits, which shall detail location, restrictions and liability insurance requirements are available through the chief ranger's office

- § 2.52 Selling or distributing printed matter that is not solely commercial advertising
 - Permits are available through the chief ranger's office
 - Please refer to 36 CFR § 2.52(c) SPECIAL EVENTS

- § 2.62 Memorialization
 - (a) Erecting monuments (requires approval from the Director of the National Park Service)
 - (b) Scattering ashes from human cremation
 - Permits are available through the chief ranger's office
 - Please refer to Section III, Regulations § 2.62 MEMORIALIZATION

- § 4.11 Exceeding established vehicle load, weight and size limits
 - Permits are available through the maintenance office
 - Please refer to Section III, Regulations § 4.11(a) VEHICLE LOAD, WEIGHT, AND SIZE LIMITS

- § 5.1 Displaying, posting or distributing advertisements
 - Permits are available through the chief ranger's office
 - Please refer to 36 CFR § 5.1 ADVERTIZEMENTS

- § 5.2 Selling intoxicants in certain park areas
 - Please refer to 36 CFR § 5.2(b) ALCOHOLIC BEVERAGES; SALE OF INTOXICANTS

- § 5.3 Engaging in or soliciting any business (requires a permit, contract or other written agreement with the United States, or must be pursuant to special regulations)
 - Please refer to 36 CFR § 5.3 BUSINESS OPERATIONS

- § 5.5 Commercial Photography/Filming:
 - (a) Commercial filming of motion pictures or television involving the use of professional casts, settings or crews, other than bona fide newsreel or news television
 - (b) Still photography of vehicles, or other articles of commerce or models for the purpose of commercial advertising
 - Permits are available through the chief ranger's office
 - Please refer to 36 CFR § 5.5 COMMERCIAL PHOTOGRAPHY

- § 5.6 Use of commercial vehicles on park area roads (The superintendent shall issue a permit to access private lands within or adjacent to the park when access is otherwise not available.)
 - Permits are available through the concession specialist
 - Please refer to 36 CFR § 5.6(c) COMMERCIAL VEHICLES

- § 5.7 Constructing buildings, facilities, trails, roads, boat docks, path, structure, etc.
 - Please refer to 36 CFR § 5.7 CONSTRUCTION OF BUILDINGS OR OTHER FACILITIES

III. GENERAL REGULATIONS

36 CFR §2.1 – PRESERVATION OF NATURAL, CULTURAL AND ARCHEOLOGICAL RESOURCES

(a)(4) Dead wood on the ground may be collected for use as fuel for campfires within the park, provided that:

- Wood is not collected from within the campgrounds, except from park-provided wood piles
- Chainsaws are not to be used.

Determination: Campfire use is a traditional activity in campgrounds and in picnic areas. Park campgrounds, however, are showing signs of significant resource impacts from firewood collection. Social trails, soil compaction, denuded vegetation, and complete clearing of all burnable materials have created “human browse lines” that have created a sterile, artificial environment that is visually unappealing. Collecting firewood reduces fuel loading, especially fine fuels along park roads where the threat of human-caused ignition is highest. In line with Leave No Trace recommendations, park managers encourage burning wood wrist-size and smaller to permit larger wood to rot in place. Park managers encourage collection of wood from hazard tree removal and road and trail clearing piles to reduce the visual and biological impacts caused by collecting dead and downed wood. Bringing firewood from other states may introduce non-native insects that could severely impact Acadia’s forests. Please purchase or collect local firewood only.

(c)(1), (c)(2) The following fruits, nuts, berries or unoccupied seashells may be gathered by hand for personal use or consumption, in accordance with the noted quantity restrictions and collections sites:

- Possession quantities for fruits and berries (excluding apples) are limited to one dry half gallon per person per day
- Possession quantity for apples is limited to ten dry gallons per person per day
- Possession quantities for unshelled nuts are limited to one half gallon per person per day
- Removing fruits, nuts and berries shall not damage the remainder of the plant
- Collecting unoccupied seashells is permitted provided that shells are not collected from historic and prehistoric sites or shell middens, which are protected by the Archeological Resource Protection Act of 1979, 16 USC § 470 (ee).

The following are prohibited:

- Gathering for commercial purposes
- Taking conifer cones, fungi, lichens and "fiddle-head" ferns or other plant material
- Taking mushrooms

Note: A “dry gallon” refers to a gallon of uncrushed fruits or berries.

Determinations: Limiting fruit and berry collection reduces the likelihood that the park will be adversely affected. The imposed limits are generally considered generous and should not create hardship.

Removal of cones, fungi, fiddle heads is in violation of 36 CFR § 2.1 (a)(1)(ii) “Possessing, destroying, injuring, defacing, removing, digging, or disturbing from its natural state plants or the parts or products thereof.” Limited collection of fruits, berries, nuts and unoccupied shells is exempt from this restriction because the CFR provides superintendents an avenue for permitting such activity and park managers have determined that collection of these items are not detrimental to future populations .

A mushroom is not a fruit, like a blueberry. It is a fruiting body -- the body that produces fruits, i.e. spores. For recreational harvest of mushrooms to be permitted, superintendents must be able to prove that such harvesting has no adverse ecological effect. Too little is presently known about mushroom ecology and the effects of harvest to permit such a determination. In fact, what is known suggests that the potential exists for harvest to have significant detrimental effects on mushrooms and their role in the ecosystem.

36 CFR §2.2 - WILDLIFE PROTECTION

(a)(1) Tracking wounded wildlife into the park, which was lawfully wounded outside of park boundaries, is prohibited unless accompanied by a commissioned park ranger. The ranger on site may terminate the search if the animal is not located within a reasonable amount of time, as determined by the ranger.

(d) Lawfully taken wildlife may be transported across park lands subsequent to the restrictions and procedures of a permit issued under 2.4(d)(4).

(e) Viewing wildlife by artificial light (spotlighting, including redirection of vehicle headlights) is prohibited park-wide.

NOTE: Night vision devices are not artificial lights, however, infrared lighting/beams are.

Determination: These regulations help to protect against the unlawful taking of wildlife within the park.

36 CFR §2.3 – FISHING

Notes: Maine residents 16 years and older and non-residents 12 years and older require a State of Maine fishing license to fish. Saltwater angling licenses are not required for recreational saltwater angling, though are regulated in accordance with the State of Maine Open Water Fishing Regulations guide.

The fishing regulations listed in 36 CFR §2.3 apply to all bodies of water but the Great Ponds, which are regulated by the State of Maine.

Within Acadia National Park, the Great Ponds are: Aunt Betty Pond, Bubble Pond, Eagle Lake, Jordan Pond, Upper Hadlock Pond, Witch Hole, and Lake Wood.

Great Ponds bordered by Acadia National Park are: Echo Lake, Hodgdon Pond, Seal Cove Pond, Long Pond (Mount Desert Island), Long Pond (Isle au Haut), Lower Hadlock Pond, and Round Pond.

(d)(8) Fishing is prohibited within 200 feet of designated swim beaches, public boat docks, and motor road bridges, with the exception of:

- Sand Beach and Echo Beach Swim Beaches from September 16 to May 14
- Frazer Point Pier and Duck Harbor Pier

Determination: Though normally restricted from fishing, fishing from the above areas will not negatively impact other visitor uses.

36 CFR §2.4 – WEAPONS, TRAPS, AND NETS

(d) A special use permit signed by the superintendent or designee is required to transport weapons, traps, or nets across park lands in order to access the Great Ponds. Applicants for

permits must possess a valid State of Maine license to hunt waterfowl, trap, and/or fish as a condition of the permit.

Note: Within Acadia National Park, the Great Ponds are: Aunt Betty Pond, Bubble Pond, Eagle Lake, Jordan Pond, Upper Hadlock Pond, Witch Hole, and Lake Wood.

Great Ponds bordered by Acadia National Park are: Echo Lake, Hodgdon Pond, Seal Cove Pond, Long Pond (Mount Desert Island), Long Pond (Isle au Haut), Lower Hadlock Pond, and Round Pond.

36 CFR §2.10 – CAMPING and FOOD STORAGE

Note: Violations under this section should be cited under §1.6(g)(2)

(a) The sites and areas listed below have been designated for camping activities as noted. A permit system has been established for certain campgrounds or camping activities, and conditions for camping and camping activities are in effect as noted:

- No person may camp in the park for more than a total of 30 days in a calendar year. From May 1 through October 31, camping is limited to 14 days total in Blackwoods, Seawall, and Wildwoods Stables Campground, and on Long Island.
- Blackwoods, Seawall, and Wildwoods Campgrounds are closed to persons other than registered campers from 11:00 p.m. to 6:00 a.m.
- Camping in Wildwoods Campground is open to visitors with stock animals only.
- A Special Use Permit is required to use the camping shelters at Duck Harbor on Isle au Haut. From June 15 through September 15 the maximum stay is 3 nights. From May 15 through June 14 and from September 16 through October 15, the maximum stay is five days.
- Campers are limited to one camping visit (maximum of 5 days) per calendar year at Duck Harbor Campground, Isle au Haut.
- The size of recreational vehicles in Blackwoods and Seawall Campgrounds may not exceed 35' in length and 11' 8" in height. Extension pull-outs must fit within the site pads provided.
- In all camping areas, party size is limited to 6 persons per site. The party size limit may be exceeded to include one immediate family.
- Group sites are limited to 15 people each.
- Campsites at Blackwoods and Seawall Campgrounds are limited to two tents and one vehicle at each site. Tents are limited in size and must fit within the site pads provided.
- Use of tents at Duck Harbor Campground is limited to what can fit inside the shelters provided.
- Generators in Blackwoods, Seawall, and Wildwoods Campgrounds may only be used from 8:00 a.m. to 7:00 p.m.
- Generator use is prohibited at Duck Harbor Campground
- Check out time for Blackwoods and Seawall Campgrounds is 10:00 a.m.
- Check out time for Duck Harbor Campground is 11:00 a.m.

- All campers must comply with conditions of the camping permits.

Determination: To prevent undue soil compaction and associated injury and death of plant life, camping is limited to tent pads provided for tent campers. Group size restrictions limit the development of satellite campsites and excessive noise commonly associated with groups larger than six people.

Determination: Vehicles parked on the parking pad cannot extend into the roadway because they will block traffic flow and create safety hazards for drivers using the road. The winding access roads in A Loop in Blackwoods Campground and C Loop in Seawall Campground cannot safely accommodate recreational vehicles or trailers longer than 35 feet.

Determination: To reduce group conflicts, to provide a sound and site buffer between group sites, to prevent sites from extending into one another, and to reduce the total area of soil compaction, the bordered areas for each group site limit group sizes. Group size restrictions are determined by the number of campers who can comfortably fit inside the bordered areas without causing safety hazards associated with tents and cooking grills.

Determination: The intent of campgrounds is to provide for a recreational opportunity, not long-term accommodations.

(d) Conditions for the storage of food are in effect, as noted, for the following areas:

- In campgrounds, all human and pet food must be stored in a hard-sided food locker or enclosed vehicle when not in use.
- Food items, scraps, cooking utensils, and garbage must be stored or disposed of in such a manner as to be inaccessible to wildlife.

Determination: This regulation reduces the likelihood of habituated wildlife and nuisance animals by eliminating human-caused wildlife attractants. Reducing habituated and nuisance wildlife also reduces the potential for wildlife bites and provides for the safety and well-being of park visitors and wildlife.

36 CFR §2.11 – PICNICKING

Picnicking is prohibited in campgrounds without a camping permit. Elsewhere picnicking is permitted park-wide. Note fire and grill use limitations listed under §2.13 – FIRES.

Determination: Picnicking is prohibited in campgrounds to maintain open areas for registered campers.

36 CFR §2.13 – FIRES

(a)(1) Lighting or maintaining fires is prohibited, except as provided for in the following designated areas or receptacles, and under the conditions noted:

Designated Areas:

- Contained charcoal and wood fires are allowed only in campgrounds and designated picnic areas in park-provided receptacles or in private grills.
- Use of personal gas grills and stoves are permitted throughout the park, except within public buildings.
- For fires above the intertidal zone on Long Island, campers must obtain a burn permit from the Town of Blue Hill Fire Chief.

- Without prior written permission from the superintendent, no other fires are permitted within Acadia National Park or St. Croix Island IHS.

Receptacles Allowed:

- Fires in designated areas must be contained within the grills provided or within private grills where no ground scorching occurs, except on Long Island as noted above.

Established Conditions for Fires:

(c) High fire danger closures will be in effect as noted:

- During Maine state-imposed burn bans and periods of high fire danger, the superintendent may temporarily ban fires, and/or stove use in the park to protect park resources and reduce the risk of wildfires.

Determination: While the NPS seeks to provide opportunities for picnicking throughout the park, another goal is to prevent wildland fires, and to prevent debris associated with charcoal grills, and to reduce the potential for other resource damage. Because of the problems associated with disposal of hot coals from charcoal grills and from wood fires, these methods used to heat food are restricted to picnic areas and campgrounds only.

36 CFR §2.14 – SANITATION and REFUSE

(a)(2) The use of government refuse receptacles or facilities for dumping household, commercial or industrial refuse, brought as such from private or municipal property may be allowed under the following conditions:

- The refuse is produced from a park employee or volunteer residing within the park
- The refuse is produced from the Wildwood Stables concessions operation

36 CFR §2.15 – PETS

(a)(1) In addition to the areas listed in this section, the following areas are closed to pets, except to service animals:

- All public buildings
- The swimming beaches at Echo Lake and Sand Beach from May 15 through September 15.
- The six cliff ladder trails: Beehive Trail, Beech Cliffs Trail, Ladder Trail, Perpendicular Trail, Precipice Trail, and Jordan Cliffs Trail between Penobscot East Trail and the carriage road.
- The Wild Gardens of Acadia at Sieur de Monts.
- Duck Harbor Campground, Isle au Haut
- All areas that are closed to park visitors, such as remote island closures to protect wildlife nesting, are also closed to pets.

Note: Pets on retractable leashes extended beyond 6' are in violation of 36 CFR §2.15 (a)(2).

Determination: The popular swim beaches receive high summer visitation and pets could create visitor use conflicts. In addition, pet excrement on beaches and areas where visitors sit and lay down could create a public health concern.

Determination: The ladder trails are difficult enough for hikers to negotiate without also having to address pet handling and management. Several other trails, not listed, have areas with precipitous routes that

can result in challenging and, to some, threatening pet contact situations. Many trails that are not listed above are not appropriate for pet use due to the steep nature of the trail or the need to physically carry a pet over terrain too difficult for them to negotiate on their own. Those trails include, but are not limited to: Acadia Mountain, Flying Mountain, Giant Slide, Cadillac Mountain—west face, Pond Trail—east end, Norembeaga Goat Trail, Bubbles-Pemetic Trail, Penobscot Mountain (Spring) Trail, Upper Beachcroft Trail, and the Upper Gorge Trail. Pets are not permitted to be off leash even in these areas.

Determination: Duck Harbor Campground is closed to pets to preserve the unique remote qualities of the island, to avoid humans contacting excrement in close proximity to the provided shelters, and to avoid potential noise violations.

Note: Closures regarding dog sleds, dog carts, and skijoring are listed under § 1.5 Closures.

(a)(3) The park headquarters area at McFarland Hill has been designated as a location where employees and volunteers of Acadia National Park may temporarily tether a dog unattended to a personal vehicle. The designation is pursuant to the conditions outlined in the McFarland Hill Dog Policy.

Determination: This dog-friendly approach at park headquarters has been established, with the guidance of detailed park policy, to provide for employee morale by offering areas away from the general public suitable for safe and humane alternatives to pet care.

(a)(5) Pet owners are responsible for removing pet excrement from campgrounds, beaches, picnic areas, parking lots, roads and other developed areas. In campgrounds, pet excrement removal regulations apply to all areas within 200 feet of established campsites, and in Blackwoods and Seawall Campgrounds, all areas within the campground loops.

Determination: Managing pet excrement in high use areas and areas where visitors congregate, sit, and lay down is necessary for human and pet health and safety.

36 CFR §2.16 – HORSES and PACK ANIMALS

(a) The following animals are designated as pack animals:

- Horses
- Burros
- Mules
- Llamas
- Alpacas

(b) The use of pack animals is permitted on the following trails, routes and roads:

- Carriage roads, except as noted in 36 CFR §2.16 (g) below
- The Western Mountain Connector Trail, when the Western Mountain Road and Lurvey Spring Road are closed to motor vehicles
- Motor vehicle roads when closed to motor vehicles
- Established crosswalks
- The following unpaved roads:
 - Hio Fire Road
 - Man O War Brook Fire Road
 - Marshall Brook Fire Road.
 - Valley Cove Fire Road

(g) Other conditions concerning the use of pack animals:

- Carriage Roads are closed to horse use between intersections 1- 8, except between junctions 7 and 8. The closure includes Witch Hole Pond Loop, the Paradise Hill Loop, and the Eagle Lake Loop (except for the area between intersections 7 and 8), and the carriage road access trail from the Visitor Center to intersection 1. Intersections are shown on the park's official "Carriage Road Users Map".
- Pack animal use is specifically prohibited on hiking trails, off routes, and on motor roads when open to vehicular traffic.
- Pack animal use is permitted within the developed area of Wildwood Stables.

Determination: By agreement with the town of Bar Harbor, pack animal use is prohibited around the majority of Eagle Lake because the body of water serves as the town's drinking water supply. Pack animal use is prohibited on the carriage road loops around Witch Hole and Paradise Hill due to funding limitations required for the increased maintenance of the roads impacted by horse use, due to lack of parking available for horse trailers, and due to potential user conflicts.

36 CFR §2.18 – SNOWMOBILES

(b) Non-conflicting state laws regarding the operation of snowmobiles include:

- Maine Snowmobile Law – Registration Requirements, Title 12 §7824
- Maine Snowmobile Law – Prohibited Acts, Title 12 §7827
- Maine Snowmobile Law – Implied Consent to Chemical Tests, Title 12 §7828

(c) Snowmobiles may be operated only on the routes indicated in 36 CFR, Chapter 1, Part 7: §7.56(a) Acadia National Park - Designated Snowmobile Routes.

NOTE: The Penobscot Mountain Parking Area referred to in §7.56 is now called the Jordan Pond North Lot.

36 CFR §2.19 – WINTER ACTIVITIES

(a) The unplowed lane of Park Loop Road may be used for cross-country skiing and snowshoeing.

Determination: Only one lane of Park Loop Road between the entrance station and Otter Cliff Road is plowed in the winter for vehicle traffic. To provide recreational opportunities by visitors on snowmobiles, skis, and snowshoes, the unplowed lane of the road is open for their use. All other sections of closed roads are open to winter activities.

36 CFR §2.20 – SKATING, SKATEBOARDS and SIMILAR DEVICES

The use of roller skates, rollerblades, skateboards, roller skis, coasting vehicles, or similar devices are allowed only in the following areas:

- All roads closed to automobiles (including carriage roads)

Determination: Most of the park's paved roads are closed to automobile traffic between December 1 and April 14. During the shoulder seasons and during winter melt periods, closed paved roads provide an

opportunity for these recreational activities to occur without the hazards of automobile traffic. Use of these coasting devices is prohibited in areas open to automobiles.

During the shoulder seasons when the carriage roads are frozen but free of snow, they are suited for off-road coasting devices such as roller skis with pneumatic tires.

36 CFR §2.21 – SMOKING

(a) The following portions of the park, or all or portions of buildings, structures or facilities are closed to smoking:

- National Park Service office or storage buildings
- Government quarters
- Government-owned or leased motor vehicles
- Fuel and flammable storage areas
- Fuel filling islands
- Wild Gardens of Acadia

Determination: Smoking is prohibited to protect park resources, reduce the risk of fire, or prevent conflicts among visitor use activities.

36 CFR §2.23 – RECREATION FEES

(b) Recreation fees, and/or a permit, in accordance with 36 CFR part 71, are established for the following entrance fee areas, and/or for the use of the following specialized sites, facilities, equipment or services, or for participation in the following group activity, recreation events or specialized recreation uses:

Entrance Fees:

Individual / Family		
\$20	7 day permit per vehicle	During dates when the Island Explorer shuttle bus is in operation.
\$10	7 day permit per vehicle	During dates when the Island Explorer shuttle bus is NOT in operation.
\$5	7 day permit per person	Visitors on foot, bike, or motorcycle
\$40	Acadia National Park Annual Park Pass	Calendar Year Passes.
America the Beautiful – the National Parks and Federal Recreational Lands Passes		
\$80	Interagency Annual Pass	Good for one year from month of purchase.
\$10	Interagency Senior Pass	Lifetime Pass.
Free	Interagency Access Pass	Lifetime Pass.
Commercial Operations and Taxis:		
\$150	Passenger capacity of 26 and over (buses)	Permit per trip.
\$60	Passenger capacity of 16-25 (Mini-buses)	Permit per trip.
\$50	Passenger capacity of 7 – 15 (Vans)	Permit per trip.
\$25	Passenger capacity of 1-6 (Sedans) PLUS (Sedans only) individual entry fee	Permit per trip.

Daily Site Use Fee Areas:

Blackwoods Campground		
\$20	Tent and RV sites per night	May 1 through October 31, reservations strongly encouraged. Reservations are made no more than 5 months in advance of camp date, call 207-288-8791.
\$10	Tent and RV sites per night	November 1 through November 31
\$10	Tent and RV sites per night	April 1 through April 30
Free	Tent and RV sites per night	December 1 through March 31*
\$50	Group Camping per night (15 people maximum capacity)	Available May 15 through October 15, by reservation. Reservations are made beginning March 15, call 207-288-8791.
Seawall Campground		
\$20	Tent and RV sites per night	Wednesday before Memorial Weekend through October 1
\$14	Walk-in sites per night	Wednesday before Memorial Weekend through October 1
\$50	Group Camping per night (15 people maximum capacity)	Wednesday before Memorial Weekend through October 1 by reservation. Reservations are made beginning March 15, call 207-288-8791.
Duck Harbor Campground		
\$25	Special Use Permit for one sheltered tent site per three nights from June 15 – September 15 or per five nights during the shoulder seasons of May 15 – June 14 or September 16 – October 15.	Available May 15 through October 15 by reservation. Reservations are made beginning April 1, call 207-288-8791.

* Permit required from Park Dispatch

(c) The collection of entrance fees may be suspended during the following periods:

- National Public Lands Day, the last Saturday in September
- Other dates as designated by the superintendent

36 CFR §2.35 –ALCOHOLIC BEVERAGES

(a)(3)(iii) The following public use areas, portions of public use areas, and/or public facilities within the park are closed to consumption of alcoholic beverages, and/or to the possession of a bottle, can or other receptacle containing an alcoholic beverage that is open, or has been opened, or whose seal has been broken or the contents of which have been partially removed:

- All public buildings and facilities, excluding the area served by the Jordan Pond House Restaurant and staff housing
- Parking lots and pull-outs
- Sand Beach
- Echo Lake Beach

- Lake Wood shoreline
- Along the shoreline within ¼ mile of the cliff and swimming area known as “Tyson Camp”, “Ranger Camp”, or “the Cliffs”, located on the southeast end of Long Pond.

Determination: Due to the high and concentrated visitor use of the above areas, the hazards posed by broken glass, the potential for discarded cans, and the potential for water emergencies occurring on unguarded beaches and water accesses, park managers have determined that alcohol consumption in the above areas is considered inappropriate.

36 CFR §2.62 – MEMORIALIZATION

(b) A permit is required for the scattering of ashes from cremated human remains. The scattering of human ashes from cremation is allowed pursuant to the terms and conditions of a permit as outlined below:

- The remains to be scattered must have been cremated and pulverized
- The ashes must not contain recognizable pieces of bone or teeth
- The ashes must not be scattered within developed areas
- The scattering of remains by persons on the ground is to be performed at least 100 yards from any trail, road, developed facility, known archeological and historic sites, or inland body of water
- The scattering of remains from the air is to be performed at a minimum altitude of 2000 feet above the ground

Determination: The conditions outlined above reduce the chances of creating offensive conditions by the scattering of human ashes.

36 CFR §3.6 – BOATING OPERATIONS

Note: The Massachusetts Commonwealth Act of 1640 (also known as the “Great Ponds Act” or “Colonial Ordinance”) defines ponds 10 acres in size and greater as being Great Ponds and subject to special state regulations.

Within Acadia National Park, the Great Ponds are: Aunt Betty Pond, Bubble Pond, Eagle Lake, Jordan Pond, Lower Hadlock Pond, Upper Hadlock Pond, Witch Hole, Round Pond, Lake Wood.

Great Ponds bordering Acadia National Park are: Echo Lake, Hodgdon Pond, Seal Cove Pond, Long Pond (Mount Desert Island) and Long Pond (Isle au Haut).

(I) The following table lists lakes and ponds encompassed by or adjacent to Acadia National Park and the recreation and vessel restrictions of those impoundments:

Pond	Motor Restrictions	Recreation Restrictions
Aunt Betty Pond	Internal combustion engines prohibited	No launch facilities
Bear Brook Pond (Beaver Dam Pond)	No Motors	No launch facilities
The Bowl	No Motors	No launch facilities
Breakneck Pond (lower)	No Motors	No launch facilities
Breakneck Pond (upper)	No Motors	No launch facilities

Pond	Motor Restrictions	Recreation Restrictions
Bubble Pond	Internal combustion engines prohibited	Bar Harbor water supply. No pets in water; no swimming, windsurfing, or SCUBA; and no snowmobiling or boating within 1000' of water intake. (H.P. 142 – L.D. 175, 1973). Vehicles designed for use on public highways are prohibited on the ice. (Town of Bar Harbor Ordinance 06.05.05.01)
Duck Pond	No Motors	No launch facilities
Eagle Lake	Maximum 10 HP engine	Bar Harbor water supply. No pets in water; no swimming, windsurfing, or SCUBA; and no snowmobiling or boating within 1000' of water intake. (H.P. 142 – L.D. 175, 1973). Vehicles designed for use on public highways are prohibited on the ice. (Town of Bar Harbor Ordinance 06.05.05.01)
Echo Lake	Maximum 10 HP engine	Launch Facility at Ikes Point
Fawn Pond	No Motors	No launch facilities
Hadlock Pond (lower)	Maximum 10 HP engine	Northeast Harbor water supply. The pond is closed to pets in water, swimming, windsurfing, and SCUBA diving to protect the drinking water supply (H.P. 142 – L.D. 175, 1973).
Hadlock Pond (upper)	Maximum 10 HP engine	Northeast Harbor water supply. The pond is closed to pets in water, swimming, windsurfing, and SCUBA diving to protect the drinking water supply (H.P. 142 – L.D. 175, 1973).
Half Moon Pond	No Motors	No launch facilities
Hodgdon Pond	Maximum 10 HP engine	No launch facilities
Jordan Pond	Maximum 10 HP engine	Seal Harbor water supply. The pond is closed to pets in water, swimming, windsurfing, and SCUBA diving to protect the drinking water supply (H.P. 142 – L.D. 175, 1973).
Lake Wood	Internal combustion engines prohibited	No launch facilities
Long Pond (Great) (Mount Desert Island)	No horsepower limit	Southwest Harbor water supply: No swimming and no SCUBA within 1000' of intake. Personal watercraft prohibited.
Long Pond (Isle au Haut)	No restrictions listed	
Round Pond	Internal combustion engines prohibited	No launch facilities
Seal Cove Pond	Maximum 10 HP engine	Unimproved Boat Launch
Seawall Pond	No Motors	No launch facilities
Sargent Mountain Pond	No Motors	No launch facilities
The Tarn	No Motors	No launch facilities
Witch Hole Pond	Internal combustion engines prohibited	No launch facilities

Notes: State regulations require that all motorized watercraft used in the state are registered.

In addition, to meet U.S. Coast Guard and state requirements:

- If the boat is less than 16 feet long, or is a canoe or kayak of any length, each person on board must have a wearable Type I, II or III PFD.
- Watercraft 16 feet or longer: If the boat is 16 feet or longer, each person on board must have one wearable PFD (Type I, II, III), plus at least one throwable device (Type IV) on board.
- Children 10 years of age and under must wear a Type I, II, or III PFD while on board all watercraft.

36 CFR §3.21 – SWIMMING AND BATHING

(b) Sand Beach and Echo Lake Beach are designated swimming beaches from May 15 through September 15. During swimming beach designation, the following apply:

Activities/Items Permitted during Swim Beach Designation		
Activity/Use	Sand Beach	Echo Lake Beach
Possession/Use of USCG-Approved Floatation	Yes	Yes
Possession/Use of Other Flotation	No	Yes
Possession of Glass Containers	No	No
Possession of Dogs	No	No
Fishing	No	No
Snorkeling/SCUBA diving	Yes	Yes
Launching/Landing of Boats	No	No
Possession of Alcohol	No	No
Incompatible Sporting Activities	No	No
Kite Flying that creates an interference	No	No
Surfing	No	No

From September 16 through May 14, Sand Beach and Echo Lake Beach are not designated swimming beaches. During non-swimming beach designation, the following apply:

Activities/Items Permitted during Non-Swimming Beach Designation		
Activity/Use	Sand Beach	Echo Lake Beach
Possession/Use of USCG-Approved Floatation	Yes	Yes
Possession/Use of Other Flotation	No	Yes
Possession of Glass Containers	No	No
Possession of Dogs	Yes	Yes
Fishing	Yes	Yes
Snorkeling/SCUBA diving	Yes	Yes
Launching/Landing of Boats	Yes	Yes
Possession of Alcohol	No	No
Sporting Activities	Yes	Yes
Kite Flying	Yes	Yes
Surfing	Yes	No

Note: The use of alcohol and the possession of glass containers in these areas are prohibited year-round.

Determination: When the beaches are in peak use, the potential for user conflicts caused by athletic sports, fishing, and kite flying is increased. Broken glass containers and fish hooks can pose a substantial hazard in swim areas where visitors do not wear shoes. Due to the potential for water emergencies occurring on unguarded beaches and water accesses, park managers have determined that alcohol consumption in the above areas is considered inappropriate.

36 CFR §3.22 – SURFING

See §1.5 Closures for regulations regarding Surfing at Sand Beach

36 CFR §3.23 – SCUBA AND SNORKELING

(a) SCUBA diving and snorkeling is permitted park-wide.

36 CFR §4.10 – TRAVEL ON PARK ROADS AND ROUTES

(a) The following park roads are open for travel by motor vehicles:

- Roads open to motor vehicle traffic, either year-round or seasonally, are shown in the National Park Service Acadia National Park official color brochure.
- Roads that are gated shut are closed to public motor vehicle use.

Note: This section does not apply to snowmobile use. Those regulations are addressed in 36 CFR §2.18 – SNOWMOBILES and 36 CFR §7.56 – Acadia National Park.

Parking is limited to:

- Parking lots and paved and gravel pull-outs
- The right lane of the one-way section of Park Loop Road from Bear Brook Picnic Area to the Stanley Brook Road junction, unless otherwise posted
- Parallel parking on the shoulders of the two-way section of Park Loop Road between Stanley Brook Road junction and the Jordan Pond Carriage Road gates
- Parallel parking along the south shoulder of the road to the Jordan Pond Boat Ramp.

Determination: Managing vehicle parking is a challenge at Acadia National Park. In an effort to reduce roadside resource damage from cars parked off road, and to reduce visual obtrusions created by developing additional parking facilities, park management has offered this portion of the one-way Park Loop Road to parked vehicles. Park management realizes the parking challenges in the popular Jordan Pond House area and, as a result, offers limited parking along roadway shoulders in that area.

For the sole purpose of transporting people with disabilities, operating electric-powered wheelchairs and devices that are specifically designed for people with disabilities is permitted throughout the park.

Determination: Electric-powered and manual wheelchairs and devices are permitted off paved roads to provide people with disabilities access to the lesser-developed and -visited areas of the park. Wheelchairs not designed solely for and used by people with disabilities for locomotion that is both capable of and suitable for use in indoor pedestrian areas are prohibited in accordance to 36 CFR, the purpose of which is to maintain tranquility for all park visitors, to provide for public safety, and to reduce resource damage caused by off road use.

36 CFR §4.11 – VEHICLE LOAD, WEIGHT AND SIZE LIMITS

(a) The following load, weight and size limits, which are more restrictive than State of Maine law, apply to the roads indicated under the terms and conditions, and/or under permit as noted:

- **Park Loop Road** between Fabbri Picnic Area and Wildwoods Stables is closed to vehicles taller than 12' 0".
- **Park Loop Road** between the Sieur de Monts and the entrance station is closed to vehicles taller than 12' 2".
- **Stanley Brook Road** is closed to vehicles taller than 10' 4".
- **Fish House Road**, in Otter Cove, is closed to vehicles taller than 11' 6".
- **Duck Brook Road** is closed to vehicles taller than 12' 4".
- Tour bus weights are limited to 27 tons GVW, in accordance with Maine state regulations.
- Commercial vehicles are prohibited from use on park roads without prior permission from the park superintendent. Trucks are generally limited to a total of three axles. All vehicles must be within state weight limits.
- RVs and buses are prohibited on **Sargent Drive**, posted by the Town of Mount Desert.
- The southern end of **Schooner Head Road**, also known as **Great Head Road**, between the Schooner Head Overlook intersection and Great Head Parking Lot is closed to vehicles longer than 20 feet and to trailers.
- **Bass Harbor Head Road** is closed to buses and RVs longer than 20 feet and to trailers.
- The size of recreational vehicles in **Blackwoods and Seawall Campgrounds** may not exceed 35' in length and 11' 8" in height. Extension pull-outs must fit within the site pads provided.

Notes: The underpass clearance height at the Highway 3 bridge over Park Loop Road at Blackwoods Campground is 11'8" in the right lane and 12'0" in the left lane. All vehicles over 11'8" must drive in the left lane while passing beneath the overpass.

Commercial vehicles are prohibited from using Otter Cliff Road within the park, except during emergencies to exit Park Loop Road.

Determinations: These roads feature historic underpasses that were constructed lower than conventionally built underpasses. Taller vehicles will not fit beneath the historic bridges. The vehicle weight and size restrictions are based upon load bearing limits on the historic bridges in the park.

The southern end of Schooner Head Road does not provide adequate turn-around room for vehicles longer than 15-passenger vans. Visitors in recreational vehicles and buses interested in hiking the Great Head Trail may access the trail from the Schooner Head Overlook Parking Lot or from the Sand Beach Parking Lot.

The parking lot at Bass Harbor Head Lighthouse is too small to provide adequate turn around space for large vehicles and vehicles with trailers.

Sargent Drive (also spelled Sergeant Drive on some maps and signs) is too narrow to accommodate larger vehicles on this 17.5' two-way road. This is a Town of Mount Desert regulation.

36 CFR §4.13 – OBSTRUCTING TRAFFIC

(a) Along the one-way section of Park Loop Road between Bear Brook Picnic Area and the Stanley Brook Road junction, parking vehicles in the right lane is permitted when in accordance with traffic control devices.

Determination: Managing vehicle parking is a challenge at Acadia National Park. In an effort to reduce roadside resource damage from cars parked off road, and to reduce visual obtrusions created by additional parking facilities, park managers offer sections of the right lane of the Park Loop Road for parking.

36 CFR §4.21 – SPEED LIMITS

(b) Unless otherwise posted in congested and/or hazardous areas, the following speed limits are established for the routes/roads indicated:

- Park Loop Road (except as noted below) and Paradise Hill Road on MDI – 35 m.p.h.
- Park Loop Road between the Stanley Brook Road junction and the Pond Trail crossing – 25 m.p.h.
- Moore Road and East Schoodic Drive, in the Schoodic Section – 35 m.p.h.
- Unpaved Roads – 25 m.p.h.
- Sections of carriage roads open to snowmobiles – 25 m.p.h.

36 CFR §4.30 – BICYCLES

(a) Bicycle use is permitted on paved roads, carriage roads, parking areas, and the following unpaved roads:

- All service roads open to public access
- Bar Island Road
- Duck Harbor Road, Isle au Haut
- The Crossroad, Isle au Haut
- Western Head Fire Road, Isle au Haut
- Loop Road, Isle au Haut
- Hio Fire Road
- Man O War Brook Fire Road
- Long Pond Fire Road
- Lurvey Spring Road
- Marshall Brook Fire Road
- Seal Cove Road
- Valley Cove Fire Road
- Western Mountain Road and connector roads
- Schoodic Head Road, Schoodic Peninsula
- Old Ranger Station Road, Schoodic Peninsula

NOTE: The private carriage roads located between Northeast Harbor and Seal Harbor, concentrated around Little Long Pond, are located outside of the park and are closed to bicycle use.

Determination: Riding bicycles abreast is permitted on roads not open to motor vehicle traffic; however, riders are requested to abide by the right-of-way guidelines posted along the carriage roads and yield to pedestrians and horseback riders.

The use of bicycles on hiking trails and in off-road areas is prohibited.

36 CFR §4.31 – HITCHHIKING

In accordance with State of Maine Law, Title 29-A: Motor Vehicles § 2110, on federal and state roads, hitchhiking is prohibited in the following areas under the terms and conditions noted:

- Hitchhiking on the traveled portion of a public way or otherwise interfering with the flow of traffic
- Creating a hazardous condition
- Hitchhiking at night