

Store Brand Name
Nicotine Transdermal System

Store Brand Name
Nicotine Transdermal System
PATCH Contains 21mg, 14mg or 7mg
delivered over 24 hours
STOP SMOKING AID KIT

NDC 0000-0000-00



INCLUDES ALL 3 STEPS



STEP 1

21mg delivered over 24 hours
Contains 28 Patches (4 week supply)

STEP 2

14mg delivered over 24 hours
Contains 14 Patches (2 week supply)

STEP 3

7mg delivered over 24 hours
Contains 14 Patches (2 week supply)

with
Behavior Support Program



Compact disc, self-help guide, and disposal tray included.

56
PATCHES

COMPLETE STOP SMOKING AID KIT – USE **ONLY** IF YOU SMOKE **MORE** THAN 10 CIGARETTES PER DAY

1. You must be motivated to quit.

4. Do not use patch for more than 8 weeks.

TO INCREASE YOUR SUCCESS IN QUITTING:

STOP SMOKING AID KIT

the enclosed booklet and on the compact disc.

Drug Facts

Active ingredient (in each patch)

Nicotine, 21 mg delivered over 24 hours. *Purpose* Stop smoking aid
 Nicotine, 14 mg delivered over 24 hours. Stop smoking aid
 Nicotine, 7 mg delivered over 24 hours. Stop smoking aid

Use reduces withdrawal symptoms, including nicotine craving, associated with quitting smoking

Warnings

If you are pregnant or breast-feeding, only use this medicine on the advice of your health care provider. Smoking can seriously harm your child. Try to stop smoking without using any nicotine replacement medicine. This medicine is believed to be safer than smoking. However, the risks to your child from this medicine are not fully known.

Do not use

• if you continue to smoke, chew tobacco, use snuff, use nicotine gum, or use nicotine patch or other nicotine containing products

Ask a doctor before use if you have

- heart disease, recent heart attack, or irregular heartbeat. Nicotine can increase your heart rate.
- high blood pressure not controlled with medication. Nicotine can increase your blood pressure.
- an allergy to adhesive tapes or have skin problems, because you are more likely to get rashes.

Ask a doctor or pharmacist before use if you are

- using a non-nicotine stop smoking drug
- taking a prescription medicine for depression or asthma. Your prescription dose may need to be adjusted.

When using this product

- do not smoke even when not wearing the patch. The nicotine in your skin will still be entering your bloodstream for several hours after you take off the patch.
- if you have vivid dreams or other sleep disturbances remove this patch at bedtime

Stop use and ask a doctor if

- skin redness caused by the patch does not go away after four days, or if your skin swells, or you get a rash
 - irregular heartbeat or palpitations occur
 - you get symptoms of nicotine overdose, such as nausea, vomiting, dizziness, weakness and rapid heartbeat
- Keep out of reach of children and pets.** Used patches have enough nicotine to poison children and pets. If swallowed, get medical help or contact a Poison Control Center right away. Discard used patches using the enclosed disposal tray.

Directions

- if you are under 18 years of age, ask a doctor before use
- before using this product, read the enclosed self-help guide for complete directions and other information.
- stop smoking completely when you begin using the patch
- if you smoke more than 10 cigarettes per day, use the following schedule below:

| | | | | | |
|-----------------------|--|----------------------|--|----------------------|---|
| Weeks 1 thru 4 | STEP 1 use one 21 mg patch/day | Weeks 5 and 6 | STEP 2 use one 14 mg patch/day | Weeks 7 and 8 | STEP 3 use one 7 mg patch/day |
|-----------------------|--|----------------------|--|----------------------|---|

- apply one new patch every 24 hours on skin that is dry, clean and hairless
- remove backing from patch and immediately press onto skin. Hold for 10 seconds.
- wash hands after applying or removing patch. Throw away the patch in the enclosed disposal tray.
- the used patch should be removed and a new one applied to a different skin site at the same time each day
- if you have vivid dreams, you may remove the patch at bedtime and apply a new one in the morning
- do not wear more than one patch at a time
- do not cut patch in half or into smaller pieces
- do not leave patch on for more than 24 hours because it may irritate your skin and loses strength after 24 hours
- stop using the patch at the end of 8 weeks. If you still feel the need to use the patch, talk to your doctor.

Other information

• store at 20-25°C (68-77°F)

Inactive ingredients

acrylate adhesive, aluminumized polyester, cotton viscose, methacrylic acid copolymer.

Comments or Questions?

Call 1-800-585-8682 Weekdays (9am-8pm ET)

See front panel for lot number and expiration date.

Store Brand Name Nicotine Transdermal System PATCH Contains 21mg, 14mg or 7mg delivered over 24 hours STOP SMOKING AID KIT



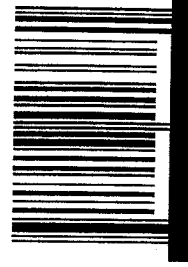
For your family's protection, patches are supplied in child-resistant pouches.
Do not use if individual pouch is open or torn. Carton shrink wrapped for your protection. Do not use if shrink wrap is open or torn.

The use of this product is covered by U.S. Patent Nos. 4,597,961 and 5,834,011

Distributed by:
Novartis Consumer Health, Inc.
 Parsippany, NJ 07054-0622

©2002 00000A

- Not for sale to persons under 18 years of age.
- Proof of age required.
- Not for sale in vending machines or from any source where proof of age cannot be verified.



Store Brand Name
Nicotine Transdermal System
PATCH
 Contains 21mg, 14mg or 7mg
 delivered over 24 hours
STOP SMOKING AID KIT

OPEN HERE

AREA FOR LOT/EXP
 1-1/2 X 1/2

**Nicotine Transdermal System
PATCH**
Contains 21mg, 14mg or 7mg
delivered over 24 hours
STOP SMOKING AID KIT

TO INCREASE YOUR SUCCESS IN QUITTING:

1. You must be motivated to quit.
2. Use one patch daily according to directions.
3. Complete the full treatment program.
4. Do not use patch for more than 8 weeks.
5. Use patch with a behavioral support program, such as the one described in the enclosed booklet and on the compact disc.

**Nicotine Transdermal System
PATCH**
Contains 21mg, 14mg or 7mg
delivered over 24 hours
STOP SMOKING AID KIT

NDC 0000-0000-00



HABITROL TAKE CONTROL®

INCLUDES ALL 3 STEPS



STEP 1

21mg delivered over 24 hours
Contains 28 Patches (4 week supply)

STEP 2

14mg delivered over 24 hours
Contains 14 Patches (2 week supply)

STEP 3

7mg delivered over 24 hours
Contains 14 Patches (2 week supply)

with
**Behavior
Support
Program**



Compact disc, self-help
guide, and disposal tray included.

**56
PATCHES**

COMPLETE STOP SMOKING AID KIT – USE **ONLY** IF YOU SMOKE **MORE** THAN 10 CIGARETTES PER DAY

K519D

1 3/16

5 27/32

1 1/32

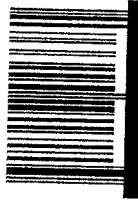
Nicotine Transdermal System PATCH Contains 21mg, 14mg or 7mg STOP SMOKING AID KIT



For your family's protection, patches are supplied in child-resistant pouches.
Do not use if individual pouch is open or torn. Carton shrink wrap is open or torn.

The use of this product is covered by U.S. Patent Nos. 4,597,961 and 5,894,011

Distributed by:
Novartis Consumer Health, Inc.
Parsippany, NJ 07054-0622



©2002

00000A

- Not for sale to persons under 18 years of age.
- Proof of age required.
- Not for sale to persons requiring prescriptions or from any source where proof of age cannot be verified.

Nicotine Transdermal System PATCH Contains 21mg, 14mg or 7mg STOP SMOKING AID KIT

OPEN HERE

AREA FOR LOT/EXP
1-1/2 X 1/2

14³/₈

10³/₄

V.2

Drug Facts

Active ingredient (in each patch)
Nicotine, 14 mg delivered over 24 hours.
Nicotine, 21 mg delivered over 24 hours.
Nicotine, 7 mg delivered over 24 hours.

Use reduces withdrawal symptoms, including nicotine craving, associated with quitting smoking.

Warnings
If you are pregnant or breast-feeding, only use this medicine on the advice of your health care provider. Smoking can seriously harm your child. Try to stop smoking without using any nicotine replacement medicine. This medicine is believed to be safer than nicotine replacement medicine. However, the risks to your child from this medicine are not fully known.
Do not use:
• If you continue to smoke, chew tobacco, use snuff, use nicotine gum, or use nicotine patch or other nicotine containing products.
Ask a doctor before use if you have:
• heart disease, recent heart attack, or irregular heartbeat. Nicotine can increase your heart rate.
• high blood pressure not controlled with medication. Nicotine can increase your blood pressure.
• an allergy to adhesive tape or have skin problems, because you are more likely to get rashes.
• a doctor or pharmacist before use if you are:
• taking a prescription medicine for depression or asthma. Your prescription dose may need to be adjusted.
• do not smoke even when not wearing the patch. The nicotine in your skin will still be entering your bloodstream for several hours after you take off the patch.
• you have vivid dreams or other sleep disturbances remove this patch at bedtime.
• you use and ask a doctor if:
• you have a rash where the patch was.
• you get symptoms of nicotine overdose, such as nausea, vomiting, dizziness, weakness and rapid heartbeat.
• you get symptoms of nicotine overdose, such as nausea, vomiting, dizziness, weakness and rapid heartbeat.
Keep out of reach of children and pets. Used patches have an opening to poison children and pets. If swallowed, get medical help or contact a Poison Control Center right away. Discard used patches using the enclosed disposal bag.

Directions
• If you are under 18 years of age, ask a doctor before use.
• Before using this product, read the enclosed self-help guide for complete directions and other information.
• Stop smoking completely when you begin using the patch.
• If you smoke more than 10 cigarettes per day, use the following schedule below:

| Weeks 1 thru 4 | Weeks 5 thru 8 | Weeks 9 thru 12 |
|-----------------------------------|-----------------------------------|----------------------------------|
| STEP 1 use one 21 mg patch/day | STEP 2 use one 14 mg patch/day | STEP 3 use one 7 mg patch/day |

- apply one new patch every 24 hours on skin that is dry, clean and hairless
- remove backing from patch and immediately press onto skin. Hold for 10 seconds.
- the used patch should be thrown away in the enclosed disposal bag.
- if you have vivid dreams, you may remove the patch at bedtime and apply a new one in the morning
- do not cut patch in half or into smaller pieces
- stop using the patch on for more than 24 hours because it may irritate your skin and loses strength after 24 hours
- stop using the patch at the end of 8 weeks. If you still feel the need to use the patch talk to your doctor.

Other information • store at 20-25°C (68-77°F)

Inactive ingredients acrylate adhesive, aluminum polyester, cotton viscose, methacrylic acid copolymer.

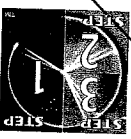
Comments or Questions? Call 1-800-585-8882 Weekdays (9am-5pm ET)

See front panel for lot number and expiration date.



Nicotine Transdermal System PATCH Contains 21mg, 14mg or 7mg STOP SMOKING AID KIT

Nicotine Transdermal System PATCH Contains 21mg, 14mg or 7mg STOP SMOKING AID KIT



Nicotine Transdermal System
PATCH 7 mg delivered over 24 hours
STOP SMOKING AID
7 mg

DO NOT OPEN POUCH UNTIL
READY TO USE.

DIRECTIONS: Apply one patch to a
dry, clean, hairless portion of upper
body or arms. Refer to Self-Help
Guide for detailed directions.

**DO NOT CUT PATCH. KEEP OUT
OF REACH OF CHILDREN AND**

PETS. Used patches have enough
nicotine to poison children and pets. If
swallowed, get medical help or contact
a Poison Control Center right away.

Throw away used patches using the enclosed disposal tray.

Store at 20-25°C (68-77°F).

Distributed by: Novartis Consumer Health, Inc., Parsippany, NJ 07054-0622

**DO NOT USE IF INDIVIDUAL POUCH IS OPEN OR TORN,
OR IF PATCH IS CUT.**

EXP

LOT



TO OPEN CUT ALONG DOTTED LINE

28014C

Nicotine Transdermal System

PATCH 14 mg delivered over 24 hours
STOP SMOKING AID

14mg

DO NOT OPEN POUCH UNTIL
READY TO USE.

DIRECTIONS: Apply one patch to a
dry, clean, hairless portion of upper
body or arms. Refer to Self-Help
Guide for detailed directions.

**DO NOT CUT PATCH. KEEP OUT
OF REACH OF CHILDREN AND
PETS.** Used patches have enough
nicotine to poison children and pets.

If swallowed, get medical help or contact a Poison Control Center right away.
Throw away used patches using the enclosed disposal tray.

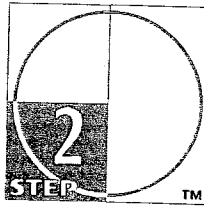
Store at 20-25°C (68-77°F).

Distributed by: Novartis Consumer Health, Inc., Parsippany, NJ 07054-0622

**DO NOT USE IF INDIVIDUAL POUCH IS OPEN OR TORN,
OR IF PATCH IS CUT.**

EXP

LOT



TO OPEN CUT ALONG DOTTED LINE

28015C

Nicotine Transdermal System

21 mg delivered over 24 hours

PATCH STOP SMOKING AID

21mg

DO NOT OPEN POUCH UNTIL READY TO USE.

DIRECTIONS: Apply one patch to a dry, clean, hairless portion of upper body or arms. Refer to Self-Help Guide for detailed directions.

DO NOT CUT PATCH. KEEP OUT OF REACH OF CHILDREN AND

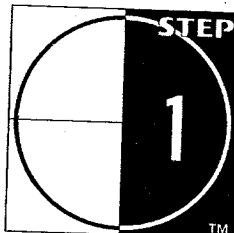
PETS. Used patches have enough nicotine to poison children and pets.

If swallowed, get medical help or contact a Poison Control Center right away. Throw away used patches using the enclosed disposal tray.

Store at 20-25°C (68-77°F).

Distributed by: Novartis Consumer Health, Inc., Parsippany, NJ 07054-0622

DO NOT USE IF INDIVIDUAL POUCH IS OPEN OR TORN, OR IF PATCH IS CUT.



TO OPEN CUT ALONG DOTTED LINE



EXP

LOT

28016C

**This is a representation of an electronic record that was signed electronically and
this page is the manifestation of the electronic signature.**

/s/

Linda Katz

7/12/02 03:25:59 PM