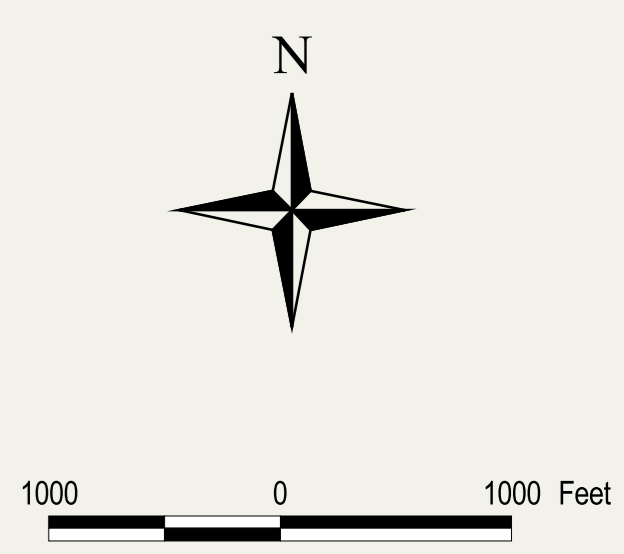


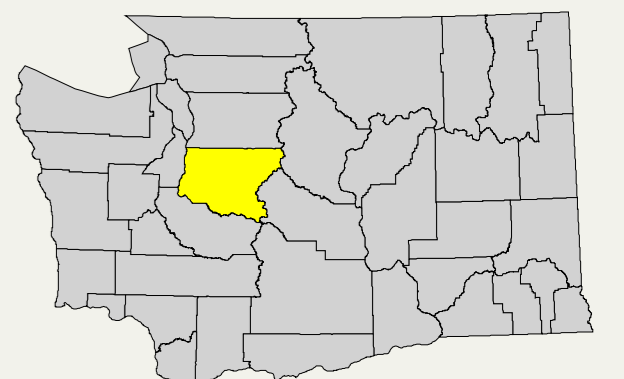
- 67810** Roadlog (Route) Number
- Gravel or Stone
- Low Type Bituminous
- Bituminous Concrete, Sheet Asphalt, or Rock Asphalt
- Portland Cement Concrete
- Brick
- Roadlog (Route) Update
- Bonded Road
- Non-County Road Network
- Railroad
- King County Boundary
- WSDOT Urban Rural Line
- Legislative District
- Legislative District Number
- Section Line
- Section Number
- Bridge
- Incorporated Area
- New Annexation
- Park
- Water Area



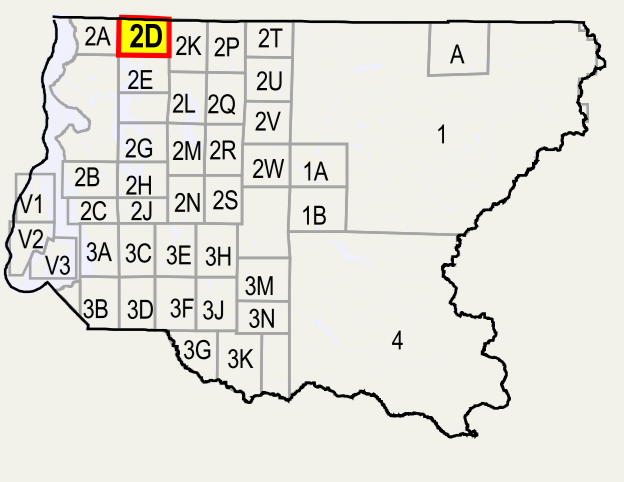
North American Datum (NAD83/91)
 State Plane Coordinate System
 Washington North Zone (FIPS-4601)
 United States Survey Feet

The information included on this map has been compiled by King County staff from a variety of sources and is subject to change without notice. King County makes no representations or warranties, express or implied, as to accuracy, completeness, timeliness, or rights to the use of such information. This document is not intended for use as a survey product. King County shall not be liable for any general, special, indirect, incidental, or consequential damages including, but not limited to, lost revenues or lost profits resulting from the use or misuse of the information contained on this map. Any sale of this map or information on this map is prohibited except by written permission of King County.

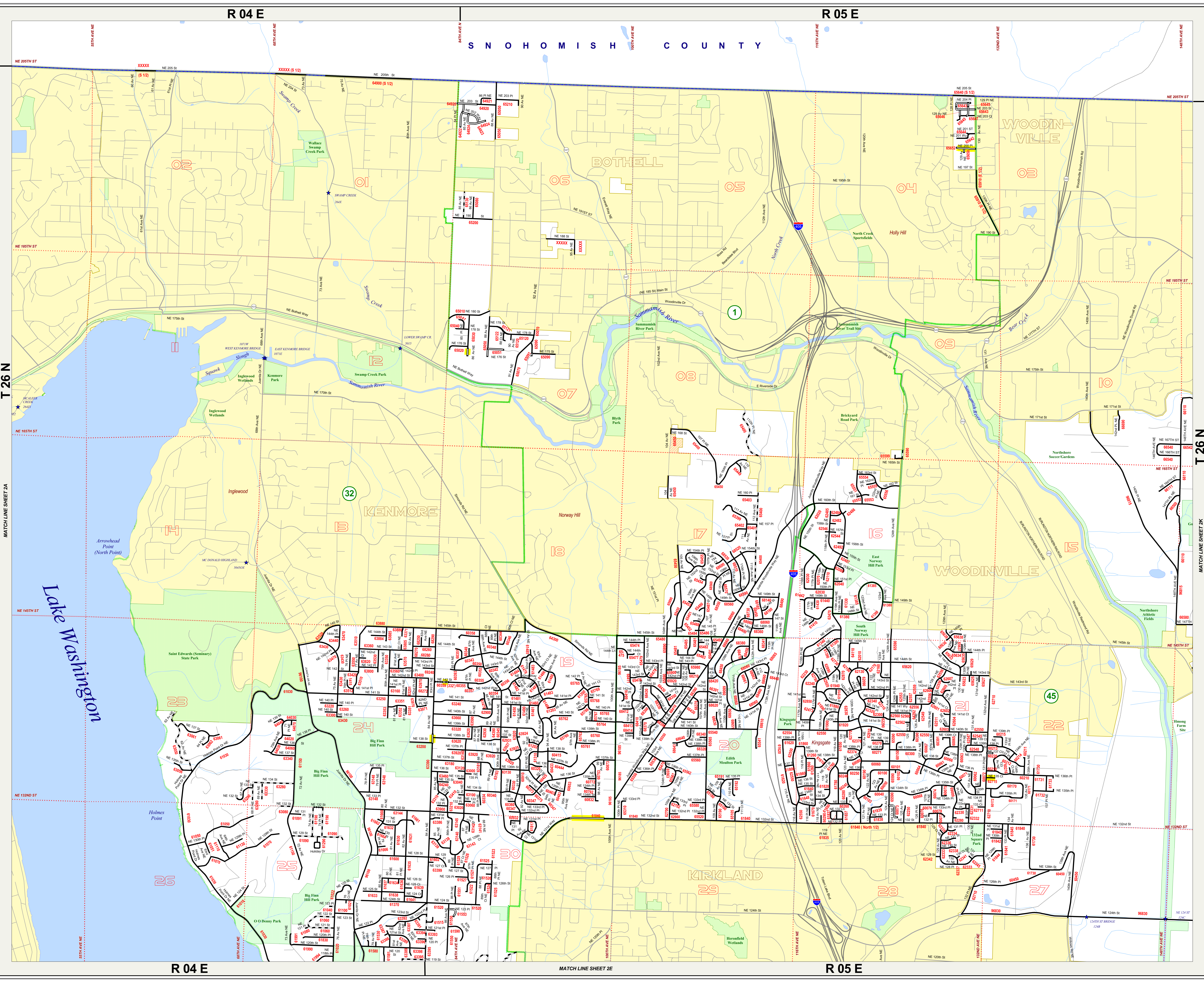
Washington State Vicinity Map



King County Index Map



For current information concerning any information contained within this map, please contact:
 (206) 296-3783 or (206) 296-6505



T 26 N

MATCH LINE SHEET 2A

Lake Washington

MATCH LINE SHEET 2A

R 04 E

MATCH LINE SHEET 2E

R 05 E

T 26 N

MATCH LINE SHEET 2K

R 04 E

R 05 E

S N O H O M I S H C O U N T Y

MATCH LINE SHEET 2A

MATCH LINE SHEET 2K