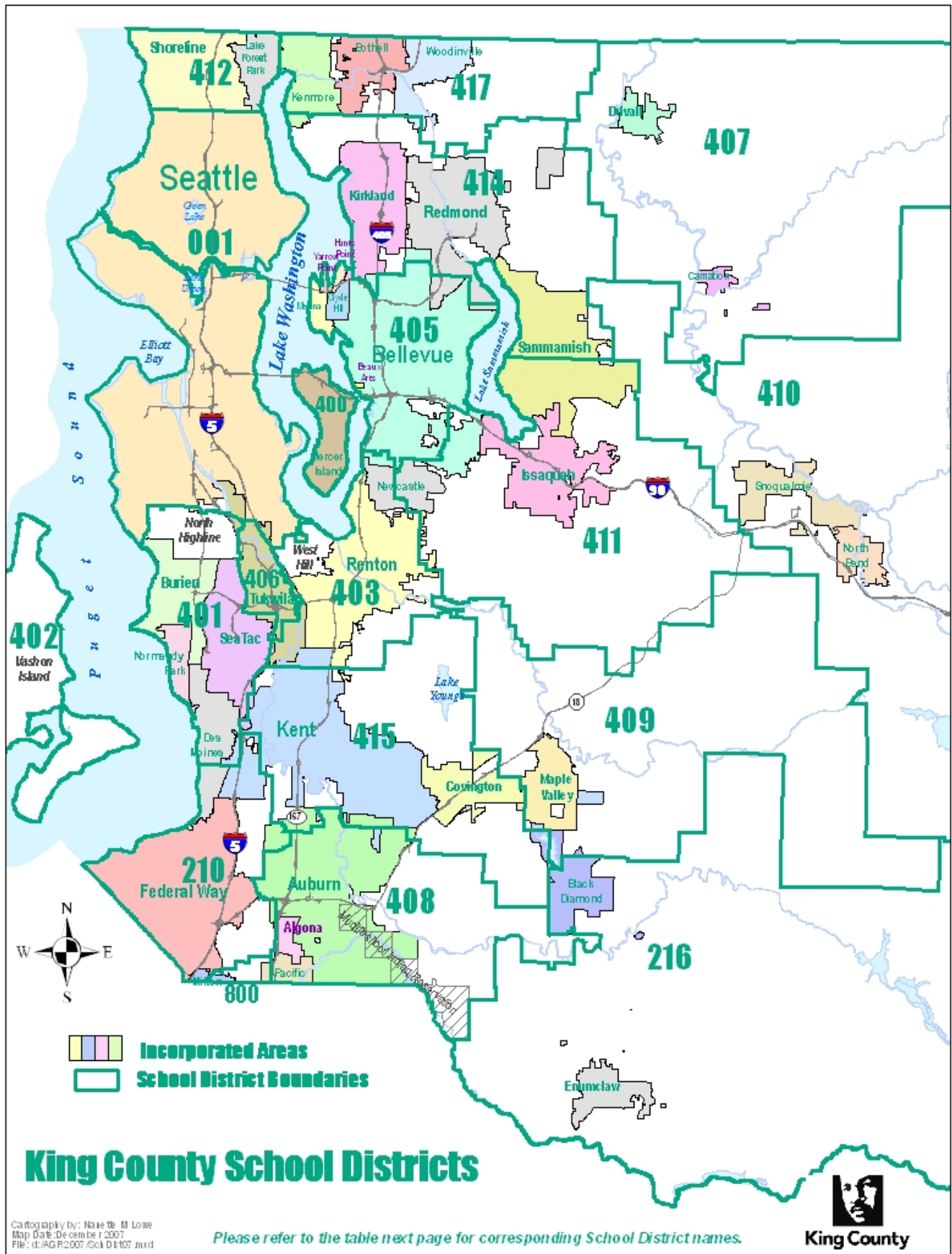


## VIII. District Data

King County has a complex system of utility and service districts for fire, water, sewers, and schools. Like in the previous years, this chapter of the report includes maps of school districts and King County Council Districts.

The following section reports the population and residential building permit activity in unincorporated King County by these special districts. A table called "Estimate of school age poverty population by school districts" is also found in this chapter.



## Population by School District 1990 - 2000

School District	<u>1990</u> POPULATION	<u>2000</u> POPULATION	<u>1990-2000 Change</u>	
			#	%
Auburn 408	54,650	67,700	13,050	24%
Bellevue 405	107,700	114,600	6,900	6%
Enumclaw 216	19,700	25,500	5,800	29%
Federal Way 210	103,200	123,000	19,800	19%
Highline 401	111,100	122,500	11,400	10%
Issaquah 411	49,500	73,200	23,700	48%
Kent 415	109,900	137,600	27,700	25%
Lk. Washington 414	131,100	153,500	22,400	17%
Mercer Island	20,800	22,000	1,200	6%
Northshore 417	59,800	72,000	12,200	20%
Renton 403	81,200	95,500	14,300	18%
Riverview 407	11,850	15,800	3,950	33%
Seattle	517,500	564,200	46,700	9%
Shoreline 412	64,800	66,000	1,200	2%
Skykomish 404	600	600	0	0%
Snoqualmie 410	19,300	25,900	6,600	34%
South Central	13,900	16,000	2,100	15%
Tahoma 409	19,000	28,800	9,800	52%
Vashon Island 402	9,300	10,100	800	9%
Fife 800 (KC Portion)	2,400	2,500	100	4%
<b>TOTAL:</b>	<b>1,507,300</b>	<b>1,737,000</b>	<b>229,700</b>	<b>15%</b>

Note: \*Northshore and Fife school districts are each in parts of two counties. Estimated King County portions of the districts are presented here.

Source: US Census 2000 and Washington State Office of Financial Management, April 2001.

## Estimate of Persons Below Poverty Level, 1999

### School age and total population

#### King County School Districts, 2000 Census

School District	TOTAL POPULATION*	Persons below poverty		Population Age 5 - 17	Age 5 - 17 below poverty	
		Number	Percent		Number	Percent
Auburn 408	66,710	6,900	10.3%	13,365	1,555	11.6%
Bellevue 405	113,725	6,300	5.5%	17,585	1,125	6.4%
Enumclaw 216	25,420	1,435	5.6%	5,654	279	4.9%
Federal Way 210	122,585	10,565	8.6%	24,710	2,745	11.1%
Highline 401	119,525	12,495	10.5%	21,405	2,880	13.5%
Issaquah 411	72,850	2,600	3.6%	15,345	585	3.8%
Kent 415	137,030	10,340	7.5%	29,285	2,855	9.7%
Lk. Washington 414	151,240	6,640	4.4%	26,585	1,240	4.7%
Mercer Island	21,845	695	3.2%	4,669	189	4.0%
Northshore 417 **	72,000	3,200	4.4%	14,900	770	5.2%
Renton 403	95,005	7,565	8.0%	14,970	1,850	12.4%
Riverview 407	15,670	580	3.7%	3,500	185	5.3%
Seattle	543,970	64,145	11.8%	59,905	9,020	15.1%
Shoreline 412	65,565	4,125	6.3%	11,330	610	5.4%
Skykomish 404	645	85	13.2%	114	30	26.3%
Snoqualmie 410	25,585	1,120	4.4%	5,055	285	5.6%
Tahoma 409	28,610	860	3.0%	6,499	159	2.4%
Tukwila 406	15,875	2,105	13.3%	2,720	525	19.3%
Vashon Island 402	10,065	600	6.0%	1,819	124	6.8%
Fife **	2,400	200	8.3%	500	50	10.0%
<b>King County Total:</b>	<b>1,706,320</b>	<b>142,555</b>	<b>8.4%</b>	<b>279,915</b>	<b>27,061</b>	<b>9.7%</b>
<b>Balance of WA State:</b>	<b>4,058,880</b>	<b>469,815</b>	<b>11.6%</b>	<b>816,485</b>	<b>114,639</b>	<b>14.0%</b>
<b>WA State Total:</b>	<b>5,765,200</b>	<b>612,370</b>	<b>10.6%</b>	<b>1,096,400</b>	<b>141,700</b>	<b>12.9%</b>

Notes: \* Total indicates non-institutional population for which poverty data are tabulated. All data are rounded.

\*\* Portion of Northshore and Fife school districts in King County is estimated.

Source: 2000 US Census, US Census Bureau, and National Center for Education Statistics, 2004.

## New Residential Units by School District

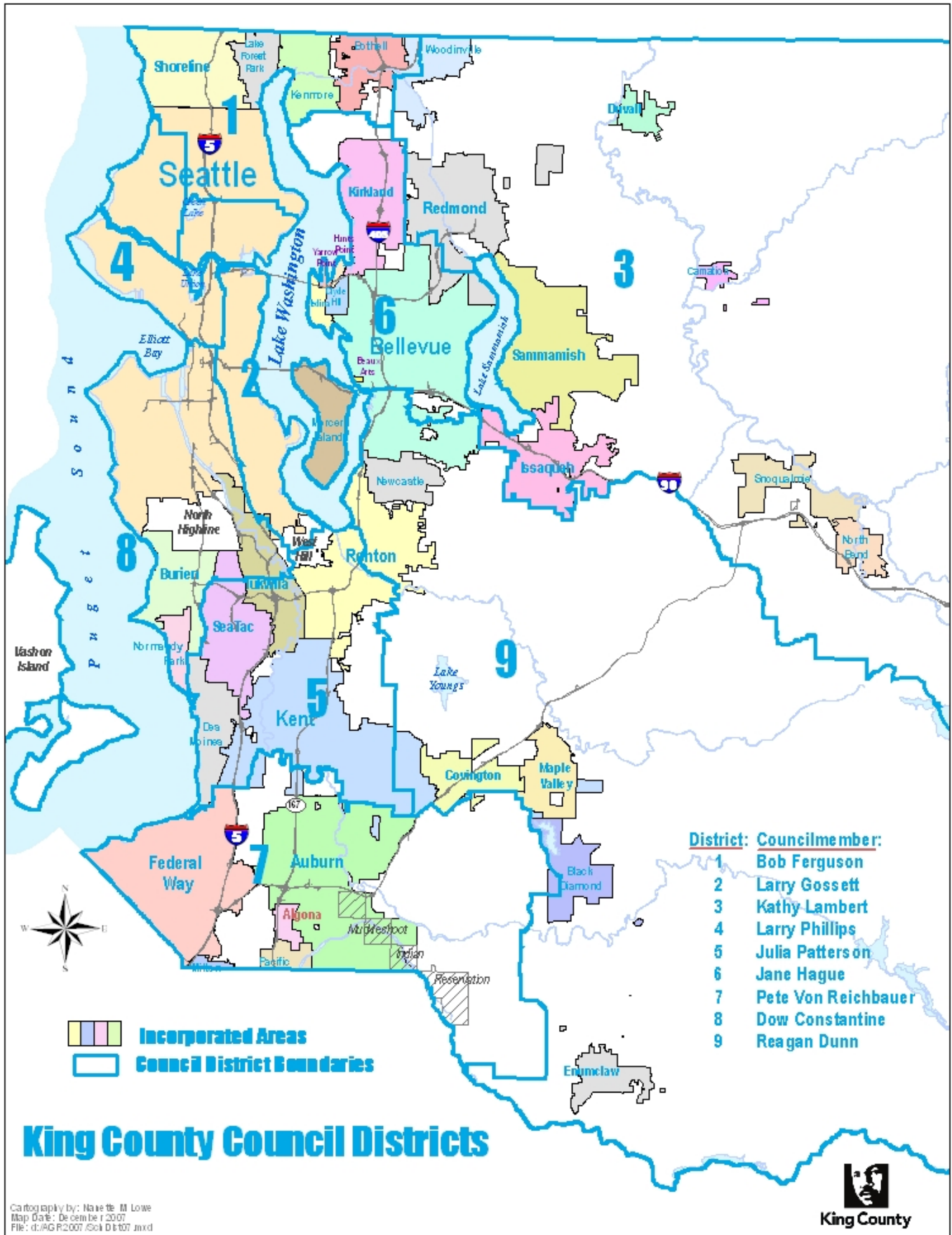
### Unincorporated King County, 1995 - 2006

School District	<u>1995</u>	<u>1996</u>	<u>1997</u>	<u>1998</u>	<u>1999</u>	<u>2000</u>	<u>2001</u>	<u>2002</u>	<u>2003</u>	<u>2004</u>	<u>2005</u>	<u>2006</u>
Auburn 408	149	248	129	189	265	241	236	279	298	171	183	118
Bellevue 405	5	5	5	23	92	23	10	2	0	0	3	10
Enumclaw 216	62	70	63	71	62	55	50	62	47	61	53	49
Federal Way 210	152	328	40	57	132	117	181	302	470	291	152	83
Highline 401	33	35	31	119	28	53	71	74	68	100	149	63
Issaquah 411	517	765	699	530	647	735	290	117	73	98	119	164
Kent 415	338	597	470	180	279	138	295	252	401	431	245	302
Lk. Washington 414	211	280	489	1,062	1,020	762	315	618	638	434	372	247
Northshore 417	167	234	558	472	445	80	46	98	81	105	136	53
Renton 403	80	101	202	587	133	203	89	79	719	464	277	123
Riverview 407	95	103	179	131	104	67	55	54	63	140	144	246
Shoreline 412	115	12	3	21	1	0	0	0	0	0	0	0
Skykomish 404	3	6	7	7	3	4	4	9	6	4	2	5
Snoqualmie 410	188	179	189	125	122	98	105	115	95	169	156	99
Tahoma 409	367	485	195	83	74	76	60	247	148	126	190	200
Vashon Island 402	72	87	83	103	86	72	120	60	34	55	30	88
Fife 800 (KC Portion)	16	17	25	21	7	86	47	77	13	20	21	3
<b>TOTAL:</b>	<b>2,554</b>	<b>3,552</b>	<b>3,367</b>	<b>3,781</b>	<b>3,500</b>	<b>2,810</b>	<b>1,974</b>	<b>2,445</b>	<b>3,154</b>	<b>2,669</b>	<b>2,232</b>	<b>1,853</b>

*See map of school districts at back of report.*

Note: This information includes only the portions of school districts in unincorporated King County.

Source: King County Department of Development and Environmental Services, residential building permits issued.



# Population by King County Council Districts

## Year 2000 by Jurisdiction

Council District	LOCATION	2000 POPULATION	2000 POPULATION IN:		
			Seattle	Other Cities	Unincorporated King County
District 1	North King County	192,900	82,700	102,300	7,900
District 2	Central Seattle	192,900	186,200	200	6,500
District 3	NE King County	193,100	0	104,500	88,600
District 4	NW Seattle	193,100	193,100	0	0
District 5	Airport Cities	192,700	0	151,200	41,500
District 6	Eastside Cities	193,500	0	165,900	27,600
District 7	SW King County	193,000	0	137,800	55,200
District 8	W Seattle / Vashon	193,100	101,300	48,000	43,800
District 9	SE King County	192,800	0	114,400	78,400
<b>TOTAL:</b>		<b>1,737,100</b>	<b>563,300</b>	<b>824,300</b>	<b>349,500</b>

Note: Council district boundaries were redrawn in 2004; population is as of 2000 Census and 2000 city boundaries.

Source: US Census 2000, Washington State Office of Financial Management, April 2001, and King County Council 2005.

***New Residential Units by King County Council District  
Unincorporated King County  
1999 through 2003***

<i>District</i>	<u>1999</u>	<u>2000</u>	<u>2001</u>	<u>2002</u>	<u>2003</u>
<i>District 1</i>	209	36	19	76	52
<i>District 2</i>	-	-	-	-	-
<i>District 3</i>	-	790	411	730	765
<i>District 4</i>	-	-	-	-	-
<i>District 5</i>	45	58	57	120	557
<i>District 6</i>	-	163	78	12	12
<i>District 7</i>	124	207	235	417	518
<i>District 8</i>	104	97	184	88	99
<i>District 9</i>	-	395	508	388	663
<i>District 10</i>	-	-	-	-	-
<i>District 11</i>	93	104	94	79	64
<i>District 12</i>	-	956	366	404	300
<i>District 13</i>	-	4	23	131	124
<b>TOTAL:</b>	<b>575</b>	<b>2,810</b>	<b>1,975</b>	<b>2,445</b>	<b>3,154</b>

**New Residential Units  
by King County Council District  
Unincorporated King County  
2004 - 2006**

District	<u>2004</u>	<u>2005</u>	<u>2006</u>
District 1	81	108	35
District 2	5	5	23
District 3	787	671	589
District 4	-	-	-
District 5	311	240	242
District 6	52	53	51
District 7	514	380	341
District 8	160	199	152
District 9	759	576	421
<b>TOTAL:</b>	<b>2,669</b>	<b>2,232</b>	<b>1,854</b>

Note: This information includes only the portions of council districts in unincorporated King County.

Source: King County Department of Development and Environmental Services, residential building permits issued.