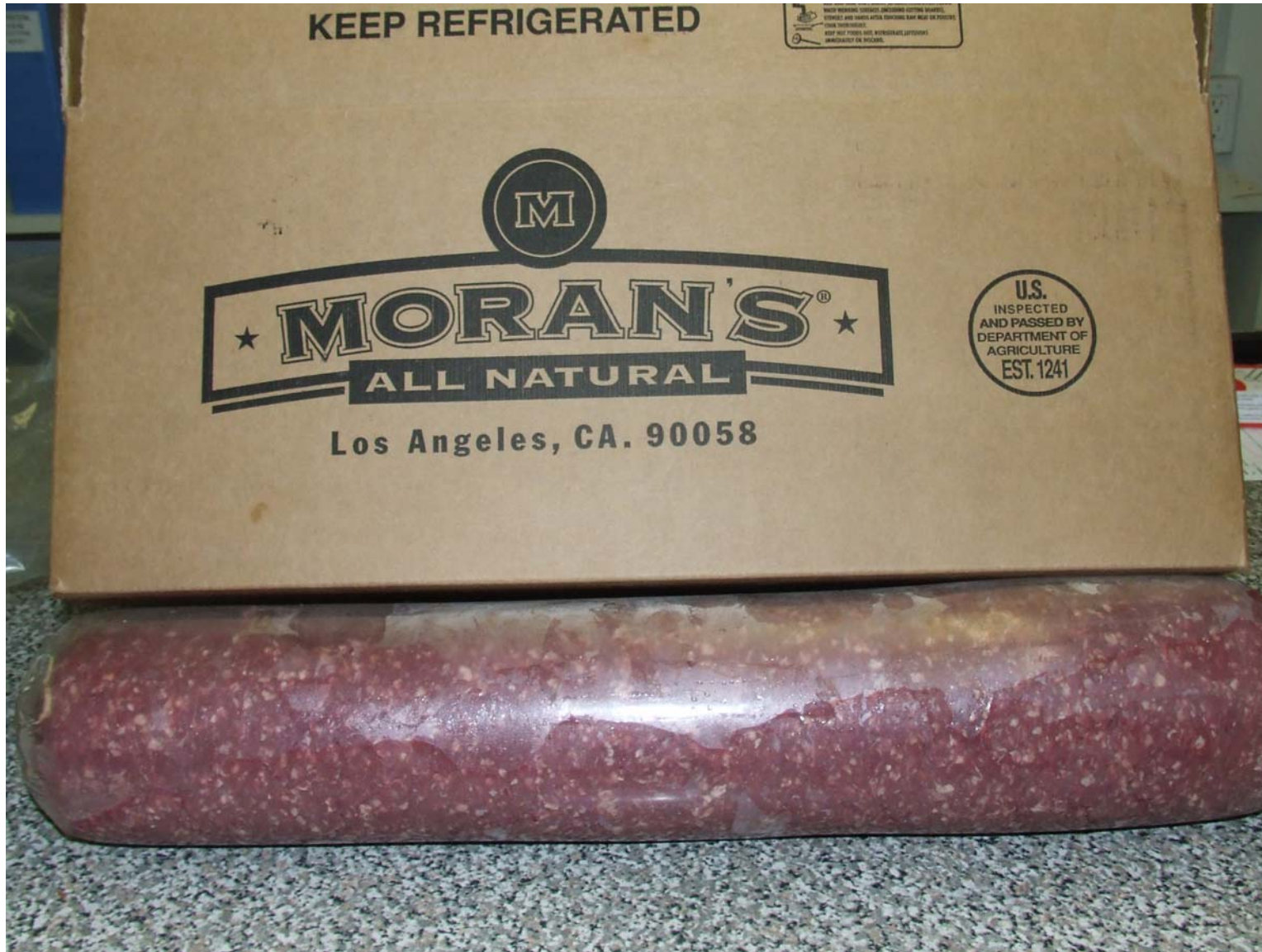
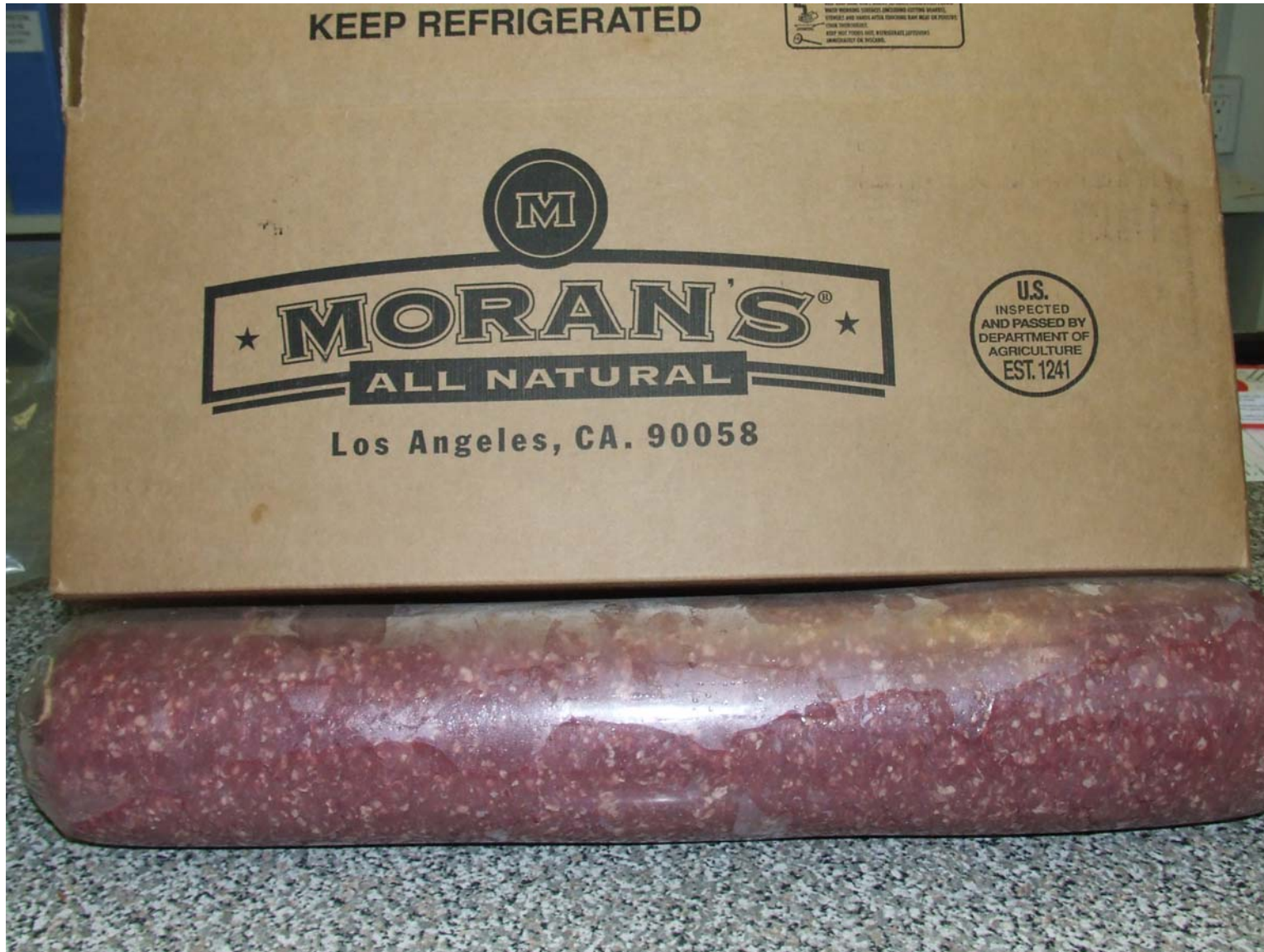


PRODUCED ON APR 13-07-PM B#31 73/27 L#2 EST 1241

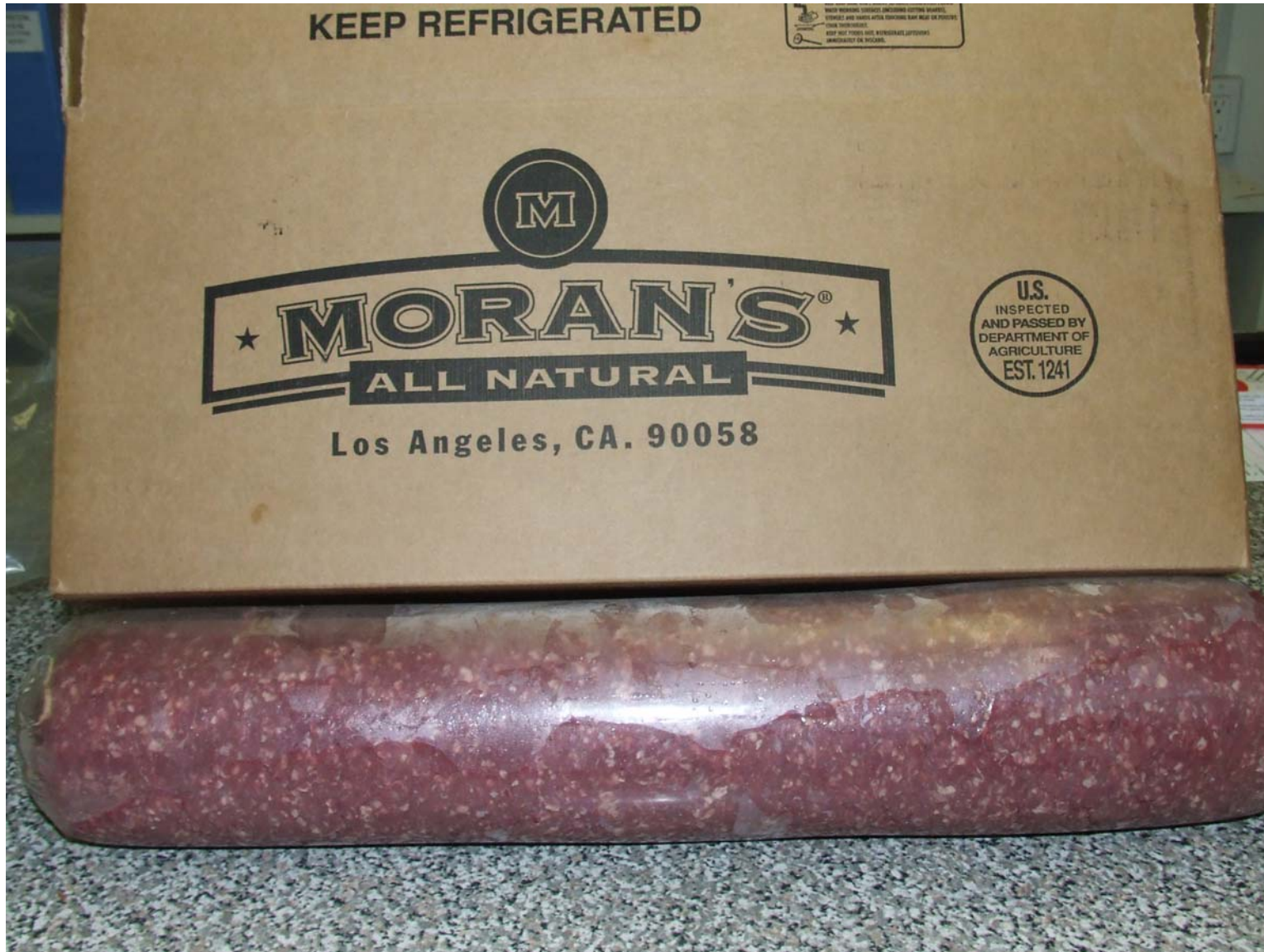


PRODUCED ON APR 13-07-PM B#31 75/25 FN L#2 EST 1241

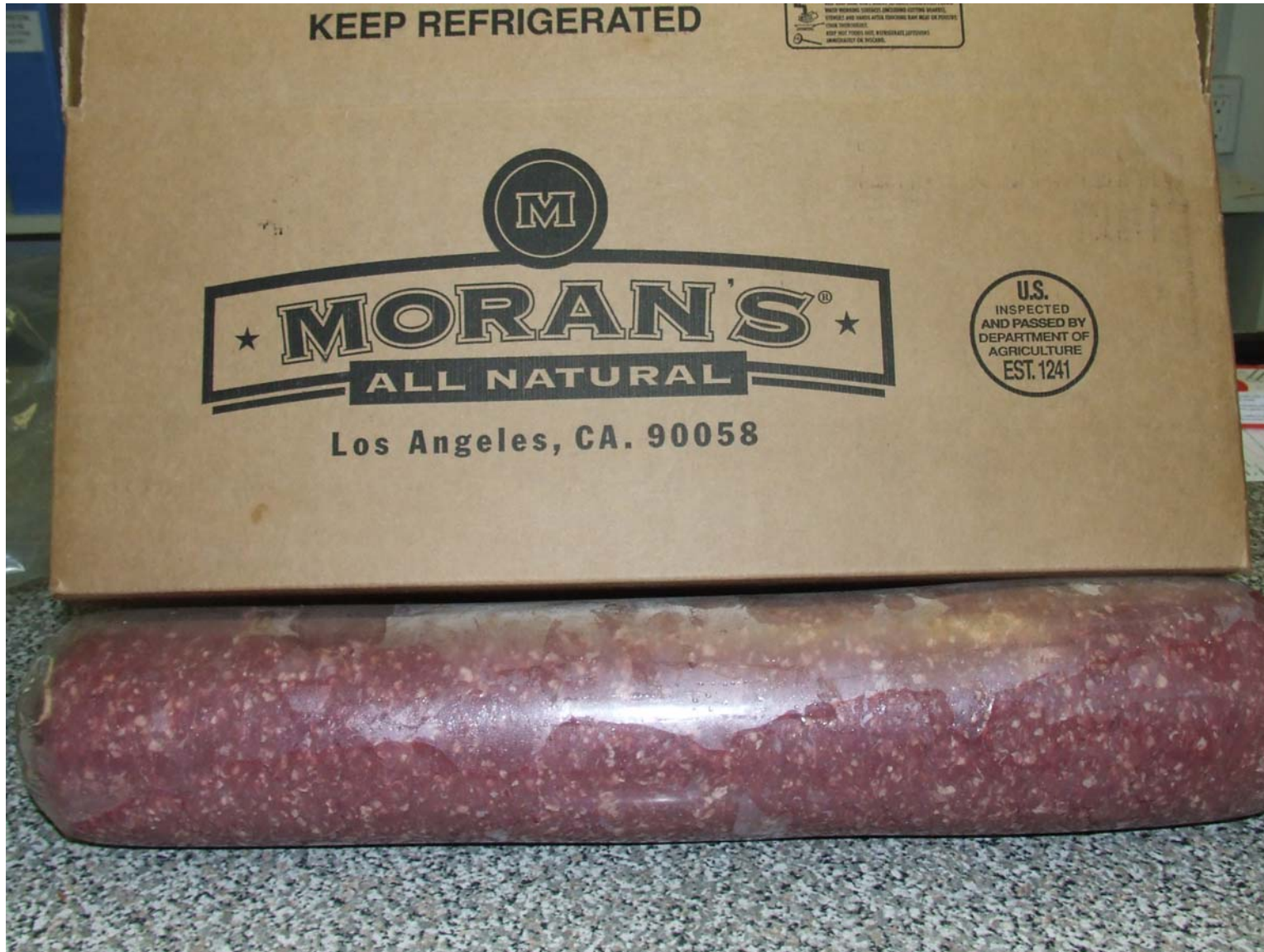




PRODUCED ON APR 13-07-PM B#30 80/20 CHUX L#2 EST 1241

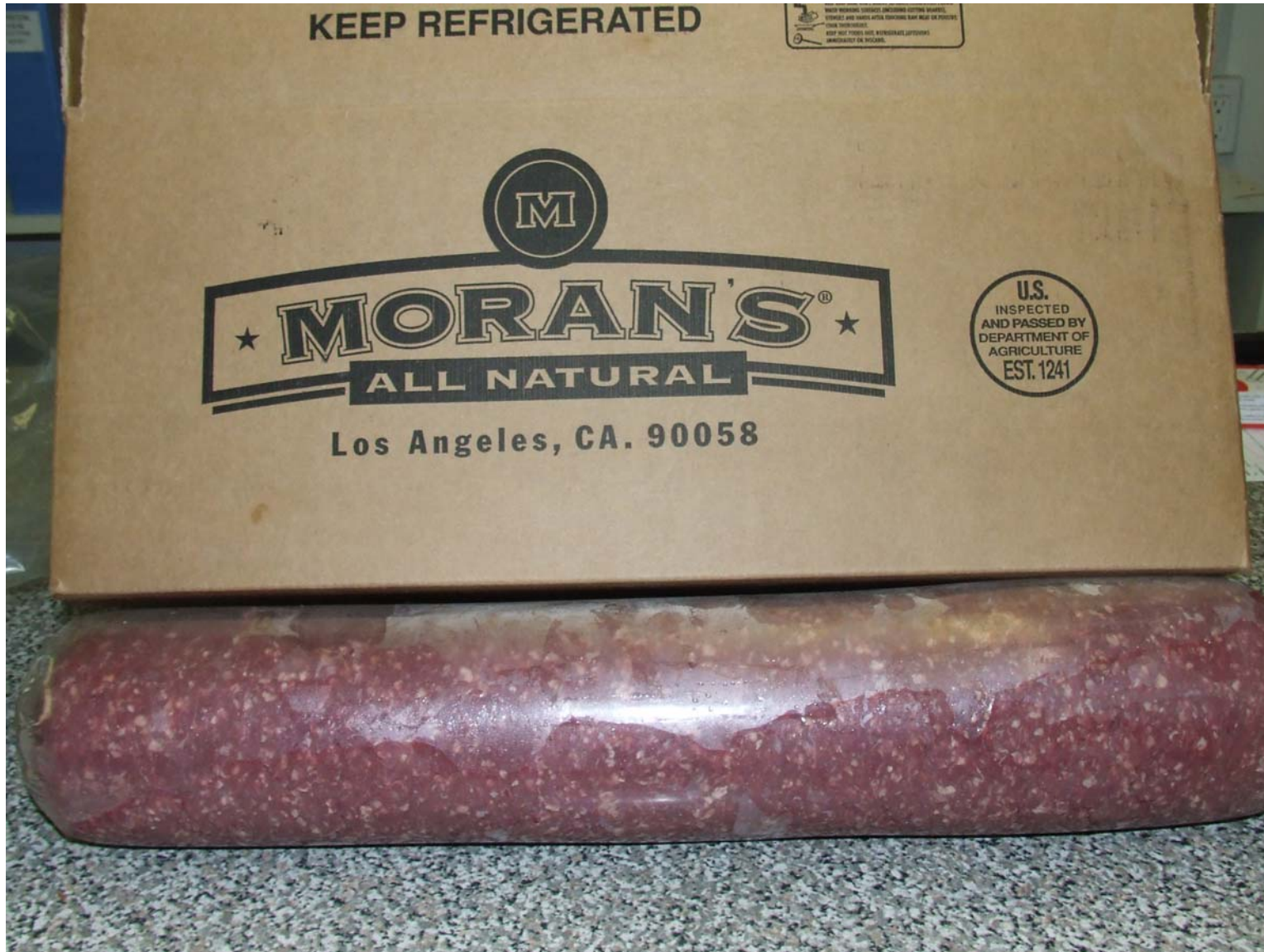


PRODUCED ON APR 13-07-PM B#(32, 33, 34) 81/19 FN L#2 EST 1241

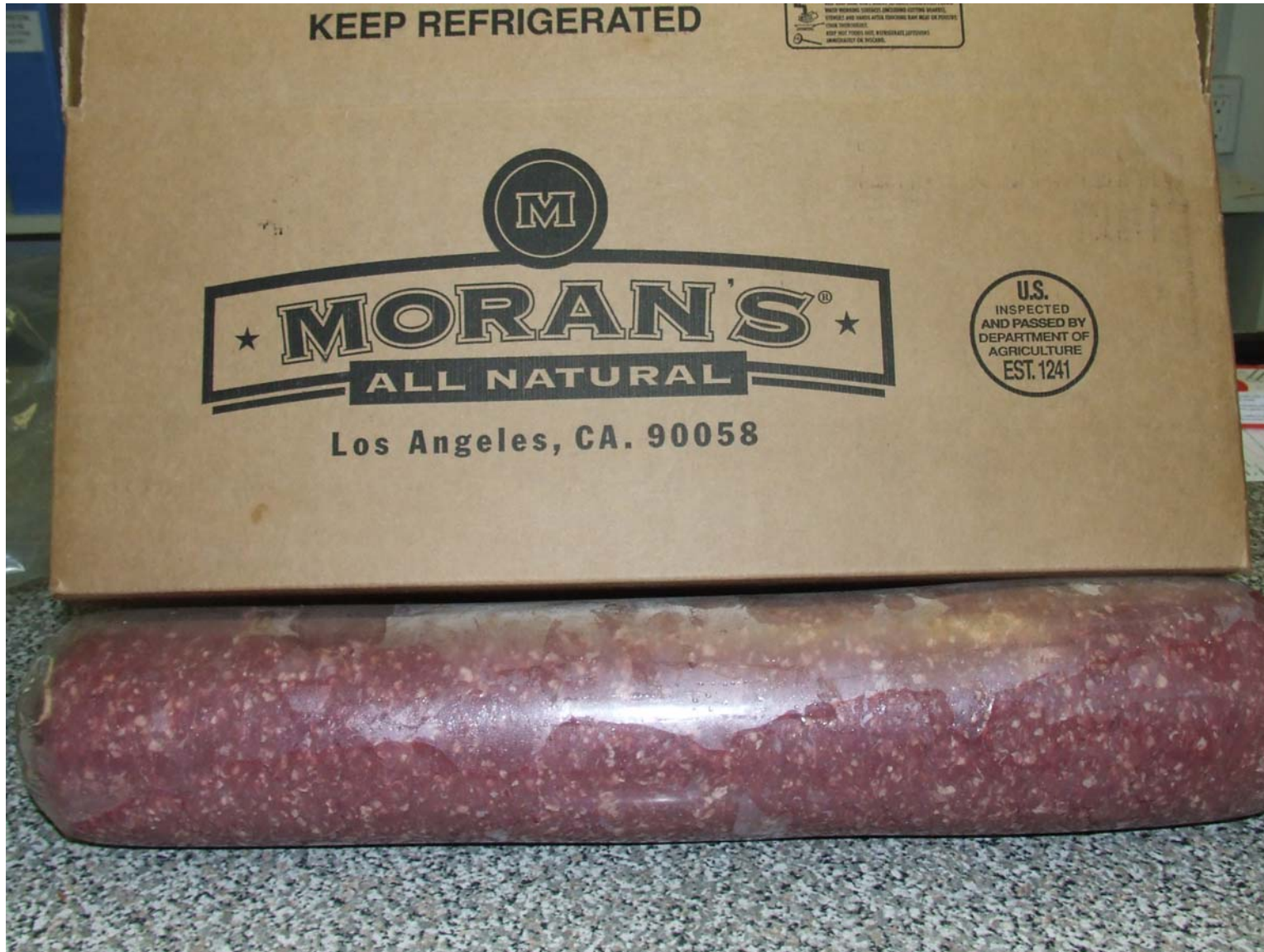




PRODUCED ON APR 13-07-PM B#21 85/15 FN L#(2, 3) EST 1241

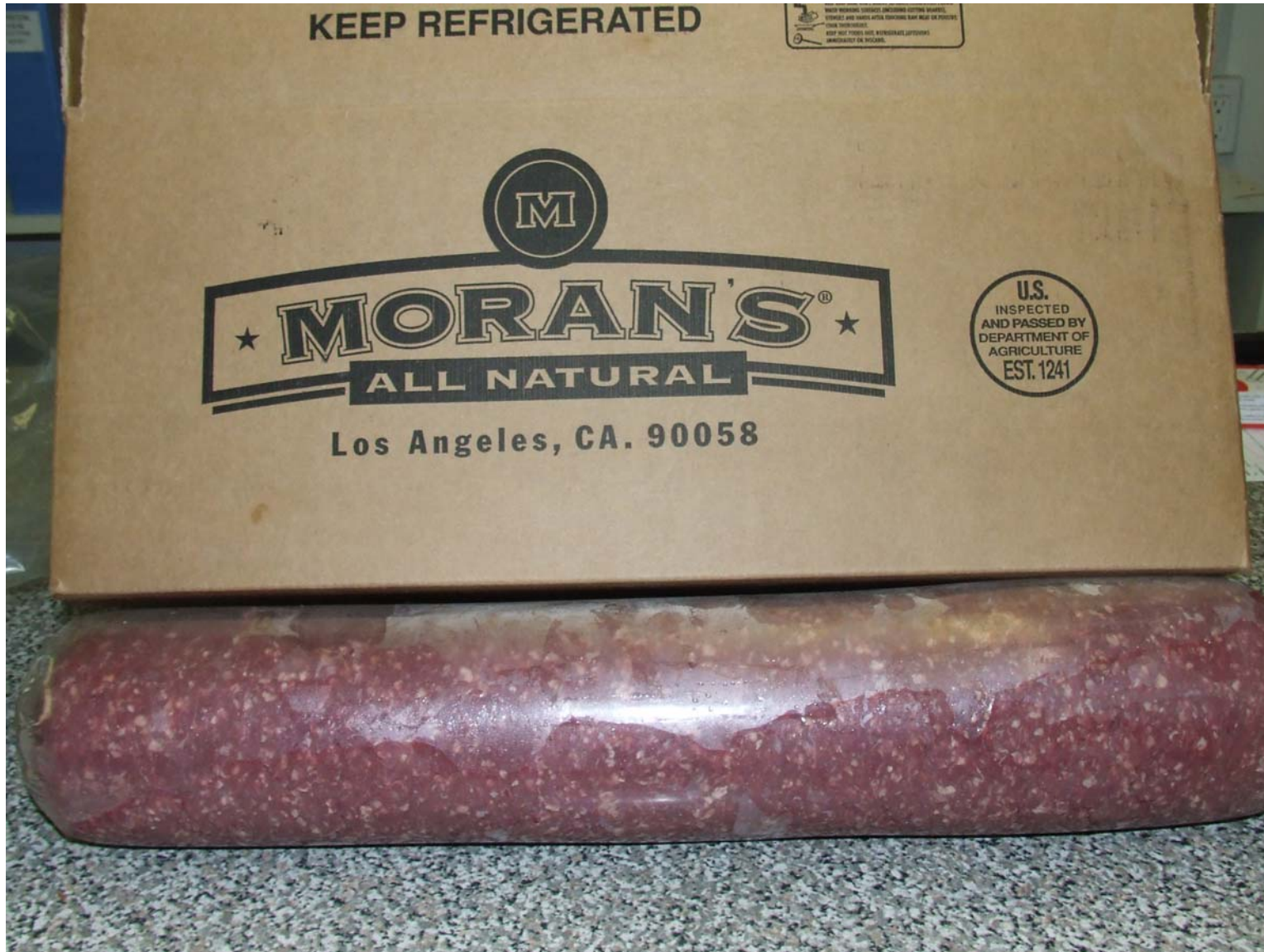


PRODUCED ON APR 13-07-PM B#(22, 23) 85/15 L#2 EST 1241

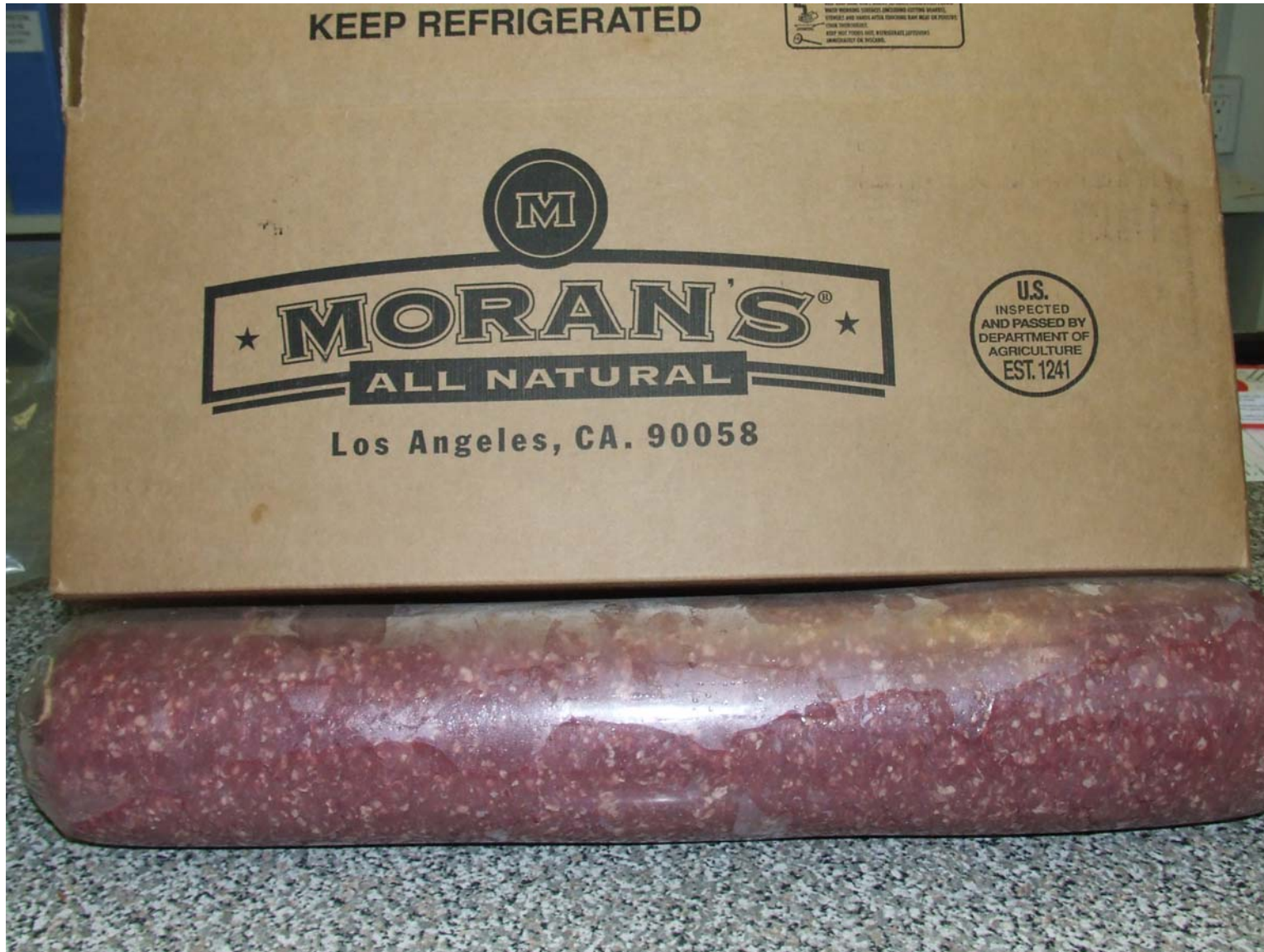




PRODUCED ON APR 13-07-PM B#(28, 29, 35) 85/15 RND L#2 EST 1241

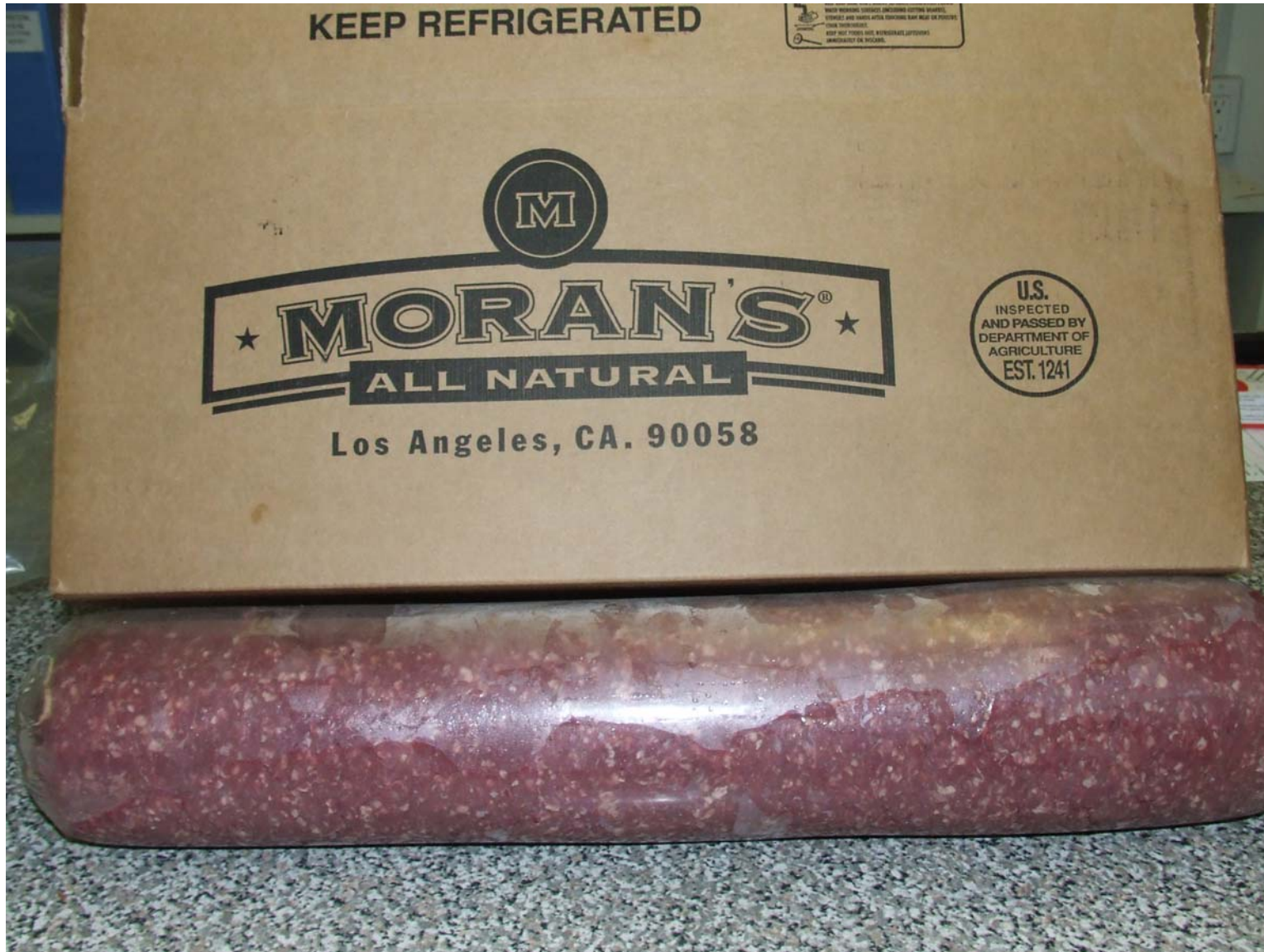


PRODUCED ON APR 13-07-PM B#(27, 33) 85/15 SIR L#2 EST 1241





PRODUCED ON APR 13-07-PM B#(10, 13, 16, 17, 19, 28) 90/10 FN L#3 EST 1241

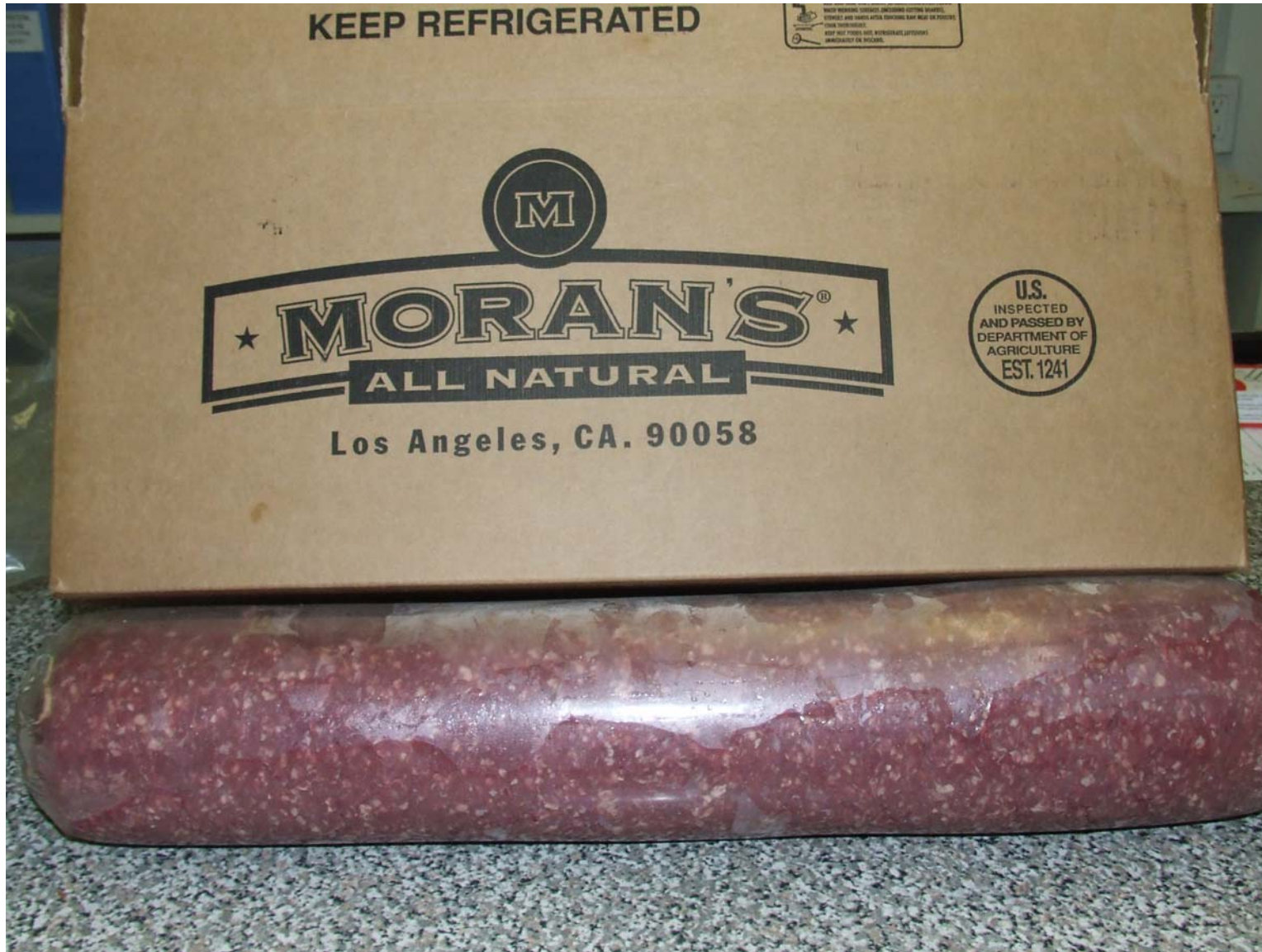


PRODUCED ON APR 13-07-PM B#(25, 26, 27) 90/10 SIR L#2 EST 1241

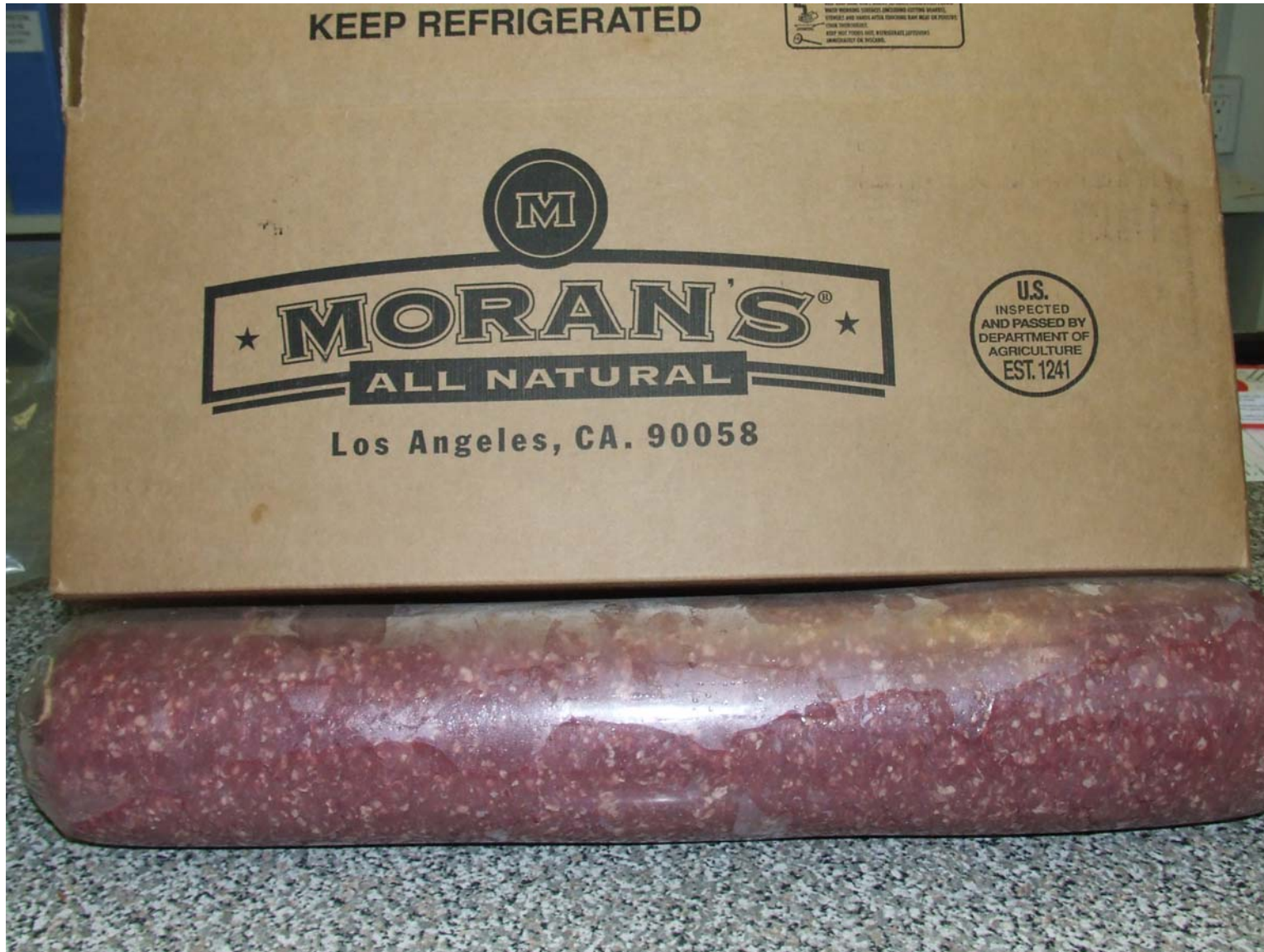




PRODUCED ON APR 13-07-PM B#24 93/7 L#2 EST 1241

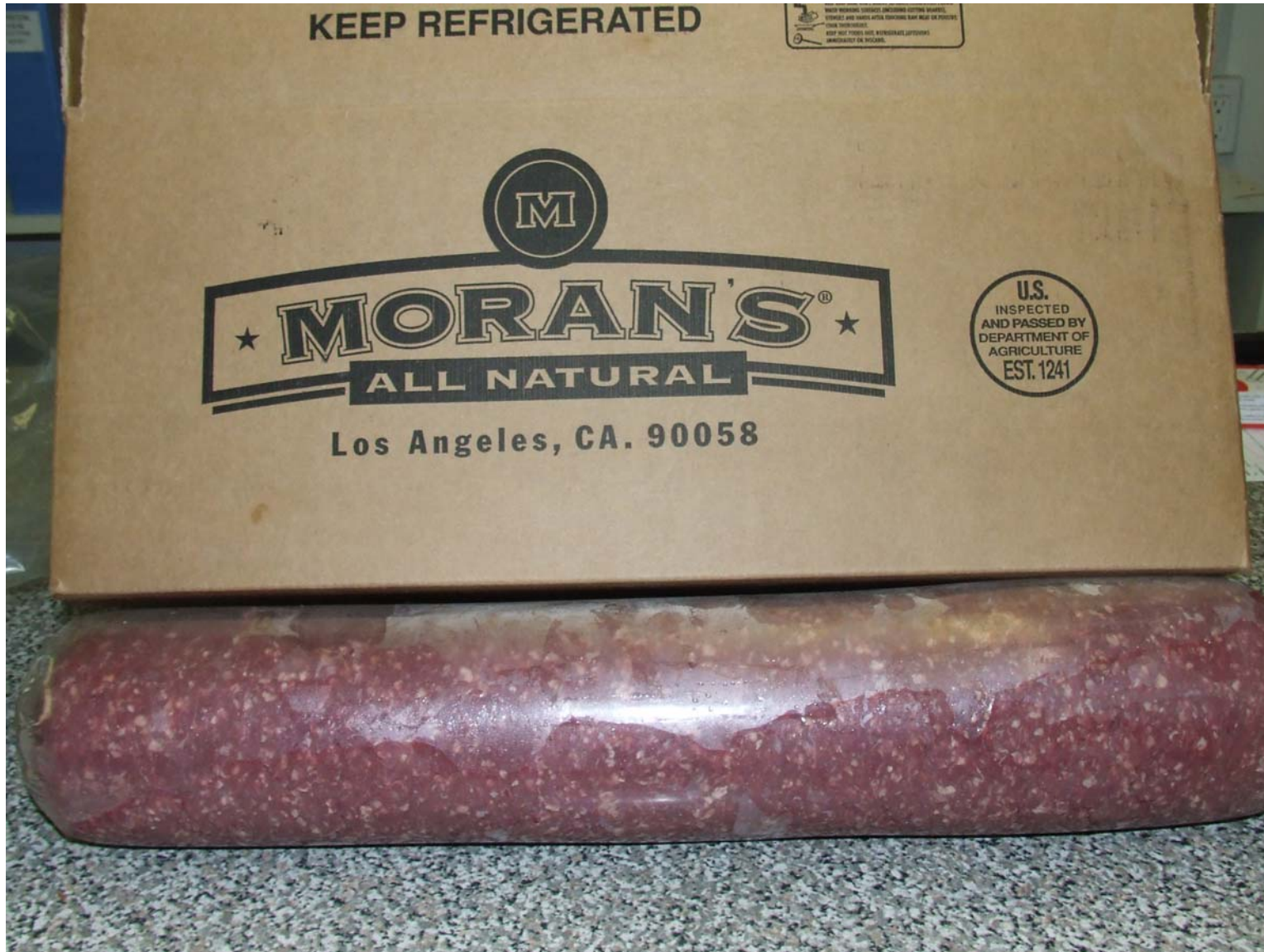


PRODUCED ON APR 13-07-PM B#(22, 23, 24) 93/7 SIR L#3 EST 1241





PRODUCED ON APR 13-07-AM B#2 95/5 FN L#3 EST 1241



PRODUCED ON APR 13-07-PM B#10 96/4 FN L#3 EST 1241





103 Freeze By APR/29/07 AM L#2 B#4 KP#(1, 2, or 3)

103 Freeze By APR/29/07 AM L#3 B#4





103 Freeze By APR/28/07 PM L#3 B#(11, 12)





103 Sell By APR/29/07 B#(26, 29) L#3 PM EST 1241









103 Freeze By APR/28/07 AM L#2 B#(20, 35) KP#(1, 2, or 3)





103 Freeze By APR/30/07 PM L#2 B#(51, 52, 53, 54) KP#(1, 2, or 3)

103 Freeze By APR/30/07 PM L#3 B#(1, 2) KP#(1, 2, or 3)

