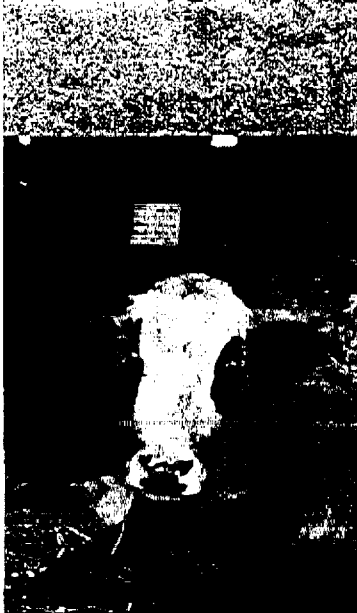
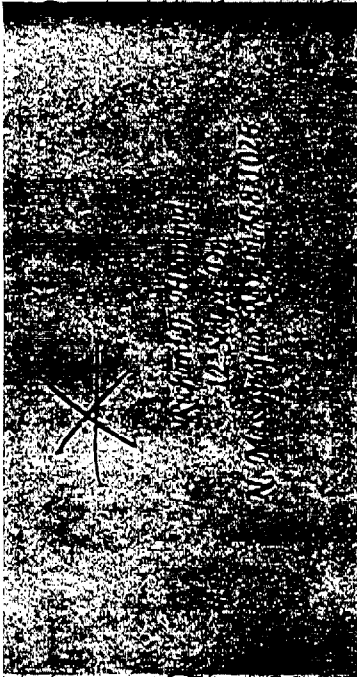


# FARM ANIMAL DEFENSE

FARM SANCTUARY  
 PO Box 150  
 Waddington, NY 14891  
 phone 607-583-2225  
 fax 607-583-2041  
<http://www.farmsanctuary.org>



## “No Downers” Campaign Update — January, 2001

Last year, the USDA announced a landmark policy to stop purchasing meat from downed cows for Federal programs, including the National School Lunch Program. The Agency stated, “USDA will no longer accept ground beef that includes product from non-ambulatory cattle, commonly known as ‘downers’.” This development shows a growing consensus — even among the livestock industry and government officials — that the marketing and slaughter of downed animals is unacceptable.

**Our chances of stopping the downed animal trade are better now than ever, and letters are needed to urge the Food and Drug Administration to grant petition 98P-0151/CP1 to prohibit the slaughter of downed animals. Please write today, and please encourage others to write as well:**

U.S. Food and Drug Administration  
 Dockets Management Branch  
 5630 Fishers Lane, Room 1061  
 Rockville, MD 20852  
 FAX: 301-827-6870  
 E-mail: [FDADockets@oc.fda.gov](mailto:FDADockets@oc.fda.gov)

*Please support this - Thank you*

**PLEASE NOTE: IT IS CRITICAL TO REFER TO DOCKET NUMBER 98P-0151/CP1 IN YOUR LETTER.**

*Here are some points you may wish to include:*

- \* Animals who are too sick or injured even to stand should not be allowed to enter the human food chain.
- \* In addition to posing an increased risk for bacterial contamination, there is evidence that some downed animals may be afflicted with a form of BSE (Bovine Spongiform Encephalopathy or “Mad Cow Disease”), a disease which has been linked to a fatal human illness (CJD or Creutzfeldt-Jakob Disease).
- \* It is impossible to move downed animals humanely, and they are typically pushed with tractors or dragged with chains — inhumane processes which cause injuries ranging from bruises and abrasions, to broken bones and torn ligaments.
- \* Downed animals comprise a very small percentage of animals slaughtered, and prohibiting their marketing will cause no undue economic hardship.
- \* Industry experts have estimated that 90% percent of downed animals can be prevented with better care and handling. Removing the market for downed animals will provide an incentive to industry to prevent downed animals in the first place.

For more information, please contact Farm Sanctuary or visit our No Downers campaign website: [www.nodowners.org](http://www.nodowners.org)

*Thank you for caring!*

*C3430*