



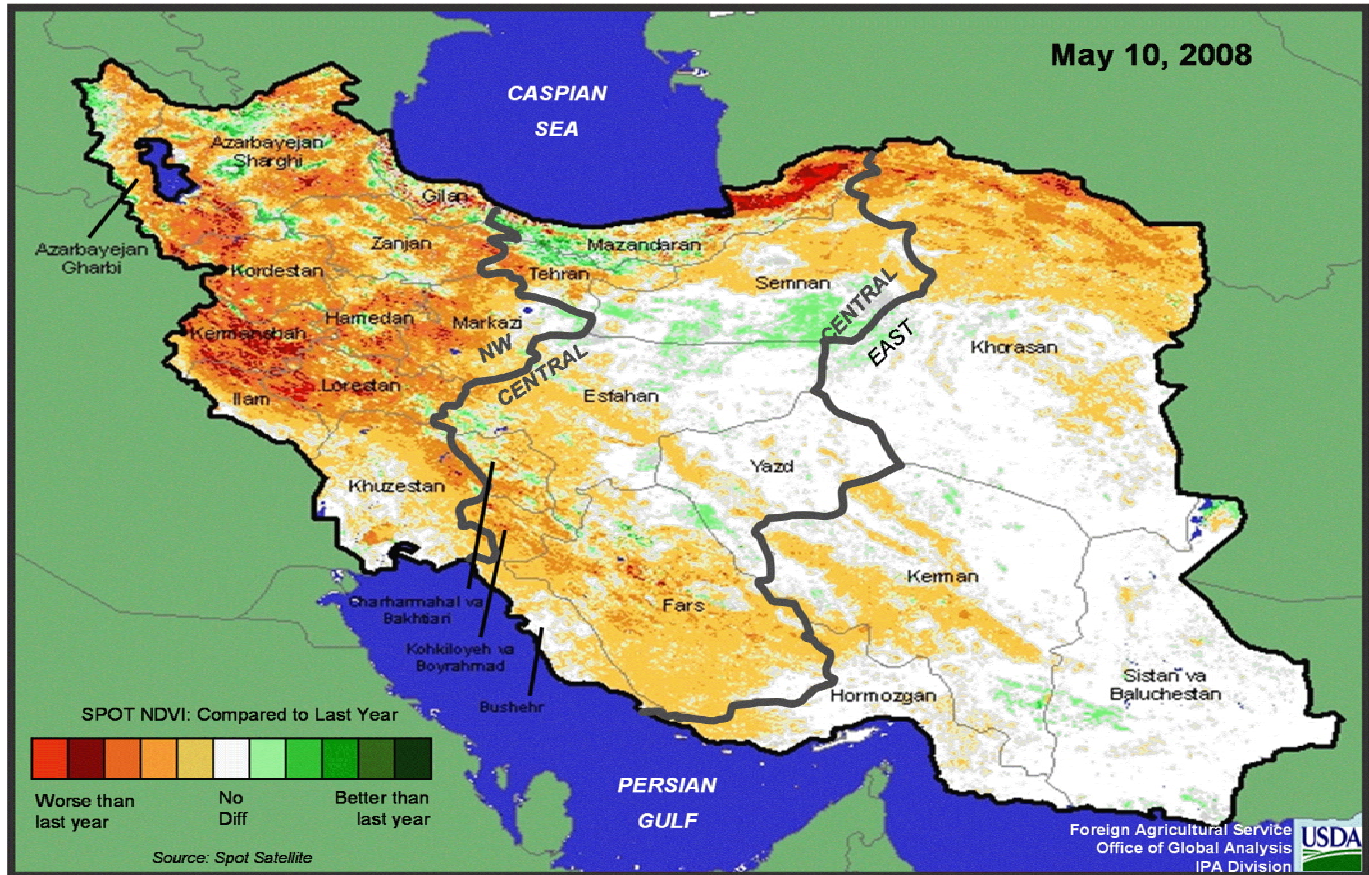
United States  
Department of  
Agriculture

Foreign  
Agricultural  
Service

Circular Series  
WAP 07-08  
July 2008

# World Agricultural Production

## IRAN: Vegetative Index Difference from Last Year



### Iran Wheat: Drought Reduces Crop

Total wheat production in Iran in 2008/09 is estimated at 10.0 million tons, down 2.0 million or 17 percent from last month and down 33 percent from last year. Harvested area is estimated at 5.9 million hectares, down 15 percent from last year, while yield is expected to decline by 21 percent to 1.71 tons per hectare. Wheat yields were affected by a serious drought and high temperatures during the 2008/09 growing season. Winter grain growing conditions over much of Iran were significantly worse than last year owing to prolonged late season drought. Most of Iran's wheat growing regions had inadequate planting rains, with rainfall averaging 50 percent of normal during the important September through November period. Late rainfall did arrive in

Approved by the World Agricultural Outlook Board

mid-November to help farmers get grain crops sown in the last few weeks of the planting window; however, it is unknown whether total wheat area declined as a result, as happened in both Iraq and Syria this year. As grain crops emerged from winter dormancy in March, severe drought conditions developed. Soil moisture models indicate that well above normal temperatures combined with limited rainfall caused a sharp decline in plant-available-moisture beginning in late February, and continued through crop maturity. These adverse growing conditions were prevalent in most major producing areas of Iran, and likely impacted both rainfed and irrigated crop yields. Based on estimates from Iran's Ministry of Agriculture, 61 percent of the country's wheat area is rainfed and 39 percent is irrigated. Satellite vegetation index (NDVI) imagery in April 2008 indicated substantial problems in key wheat growing regions in Iran. As drought conditions deepened, the NDVI images provided clear evidence that crop conditions were much worse than last year in most areas of the country. The most severe declines in crop yield potential were focused in northwest, northeast, and south central Iran – encompassing all the major producing provinces. Iran's Commerce Minister reported on June 11<sup>th</sup> that harsh winter temperatures and widespread drought had significantly reduced wheat production, and that Iran needed to import a total of 5.0 million tons to meet its normal annual consumption requirement. (*For more information, contact Michael Shean at 202-720-7336.*)

### **Australia Wheat Production Rebounds**

Wheat production for 2008/09 is forecast at 25.0 million tons, up 1.0 million or 4 percent from last month, and up 12.0 million or 91 percent from last year. The large year-to-year rise in production is the result of forecast increases in both area and yield. Area is forecast at a record 14.0 million hectares, up 0.5 million or 4 percent from last month, and 1.66 million or 14 percent above last year. Yield is forecast at 1.79 tons per hectare, 67 percent above last year and well above the five-year average yield of 1.53 tons per hectare. This season's area increase is a culmination of three factors: improved rainfall, strong economic incentive for growers to recoup losses incurred during the 2006 and 2007 droughts, and the conversion of last season's pasture into field crops. Rainfall was sufficient for timely planting of this season's record area which occurred from April through July. The 2007 winter and summer drought severely impacted pasture growth which, combined with high feed grain prices throughout the country, led farmers to sell off large numbers of cattle and sheep. According to the Australia Bureau of Statistics, sheep numbers are the lowest since 1925. Some of this unused pasture land will be converted to wheat area. (*For more information, contact Jim Crutchfield at 202-690-0135.*)

### **EU-27: Estimated Wheat Production Up Nearly 20 Percent from Last Year**

The USDA estimates the 2008/09 European Union (EU-27) wheat crop at 141.7 million tons, 1.7 million or 1 percent above last month and 22.2 million or 19 percent above last year. Harvested area is estimated at 26.6 million hectares, unchanged from last month and 1.9 million or 8 percent above last year. Yield is estimated at 5.33 tons/ha, second only to the 2004/05 crop. A combination of factors has boosted potential wheat output this season. Prices were at record highs at planting time. Following two consecutive disappointing harvests, the EU's Common Agricultural Policy (CAP) was modified to eliminate its mandatory 10-percent set-aside requirement for area in 2008/09. Finally, weather in Europe has been generally favorable in most growing regions since autumn planting, with the exception of persistent late-spring dryness in eastern Germany and western Poland. Despite the dryness, however, local officials suggest

that winter precipitation was adequate for winter-crop development, and timely July rainfall benefited wheat in the grain-fill stage. The more pressing concern in this region, according to officials, is potential damage to spring-planted crops. *(For additional information, contact Bryan Purcell at 202-690-0138.)*

### **India Corn: Production Forecast at Near Record Level**

The USDA forecasts 2008/09 India corn production at 18.5 million tons, up 1.0 million or 6 percent from last month, but virtually unchanged from last season's record production of 18.54 million tons. Area is forecast at a record 8.4 million hectares, unchanged from last month and up 1 percent from last year. The higher estimated production is attributed to a forecast record area and an above average yield following favorable sowing conditions in major growing states of Uttar Pradesh, Bihar, Madhya Pradesh and Gujarat. In addition, the increasing use of hybrid seeds is expected to result in above average yields. According to the government of India, sowing progress is outpacing last season. As of July 4, sown area was 26 percent greater than at the same time last year, and planting was estimated to be 32 percent complete. *(For more information, contact Jim Crutchfield at 202-690-0135.)*

### **Russia: Estimated Corn Production Reduced by 1.0 Million Tons**

The USDA estimates Russia corn production for 2008/09 at 5.8 million tons, down 1.0 million or 15 percent from last month but up 1.9 million or 47 percent from last year. Harvested area is estimated at 1.6 million hectares, down 0.2 million from last month but up 0.3 million from last year. The area revision is based on planting-progress data released by the Ministry of Agriculture. The forecast yield of 3.63 tons per hectare is down by 4 percent from last month due to localized dryness in parts of the southern Central and central Southern Districts. Although timely rainfall during the first week of July partially alleviated the dryness and weather data indicate that corn has suffered only minor damage, the crop would benefit from additional rainfall as it advances toward the heat- and moisture-sensitive reproductive stage.

According to information from the U.S. agricultural attaché in Moscow, two additional factors could hamper corn output this year. Following a steady increase in the use of hybrid planting seed in Russia in recent years, producers this season have reported shortages of high-quality planting seed. While difficult to quantify, a reduction in the use of hybrid seed would almost certainly have a negative effect on yield. Furthermore, local reports indicate that some farmers in the Central District and Siberia who have started new dairy projects will likely consider harvesting corn at the milking or soft-grain stage for high quality forage, rather than harvesting the crop for grain. *(For more information, contact Mark Lindeman at 202-690-0143.)*

### **India Soybean: Second Largest Crop Forecast**

India's 2008/09 soybean production is forecast at 8.7 million tons, unchanged from last month, but down 0.6 million or 6 percent from last year. The area is forecast at a record 9.1 million hectares, unchanged from last month, but up 0.3 million or 3 percent from last year. Higher government support prices for soybeans and increasing government capacity in oilseed procurement will fuel increased plantings. Better soybean returns received by farmers last season as compared with competing crops are also expected to result in a record area this season.

The major growing areas of central and eastern Madhya Pradesh received excellent rainfall for sowing, in contrast to parts of western Madhya Pradesh and Maharashtra where there has been below normal rainfall as of July 5. Currently the 2008/09 forecast production will be second only to last season's record production. Yield for 2008/09 is forecast above average but below the record set partly because of last season's abundant July rainfall. Soybeans are grown exclusively in the *kharif* season under mostly rainfed conditions. The ideal sowing window is early to mid-June and typically commences with the arrival of the monsoon. Some farmers are able to provide supplemental irrigation, though this practice is limited by water reserves and equipment. The main producing states are Madhya Pradesh (53%), Maharashtra (34%), and Rajasthan (8%). *(For more information, contact Jim Crutchfield at 202-690-0135.)*

### **India Cotton: Record Crop Remains Forecast for 2008/09**

India's 2008/09 cotton production is forecast at a record 25.5 million bales, down 1.0 million from last month, but up 0.2 million from last year. The area is forecast at 9.35 million hectares, down 0.3 million from last month, and down 0.18 million from last year. According to the FAS Office of Agricultural Affairs in New Delhi, cotton planting for the 2008/09 season is expected to decrease from last season as a result of a shift to oilseeds and coarse grains. The major portion of the area shift is expected in the state of Gujarat as farmers move back into the more profitable peanut. Sowing in the mainly irrigated Northern Zone has been completed for several weeks; however, rains in Andhra Pradesh have so far been insufficient to initiate widespread planting. Recent light rains in the western growing state of Gujarat followed by heavier rains have allowed the resumption of cotton sowing. It is widely accepted that the strong upward trend in India's cotton yield in recent years is largely a result of the increasing adoption of Bt cotton. It is anticipated Bt cotton planting in 2008/09 will account for more than 70 percent of the expected cotton area. During the previous two years, the government of India approved 62 new insect resistant Bt varieties for commercial cultivation. In addition to the approved varieties, there are over 50 Bt cotton hybrids, illegally bred and marketed by farmers and seed companies, which are available at lower prices versus the officially approved varieties. Given the year-to-year increase of Bt area, a record yield of 594 kilograms per hectare is forecast for the season. *(For more information, contact Jim Crutchfield at 202-690-0135.)*

### **Higher China Barley Yields Due to Favorable Weather**

China's 2008/09 barley production is estimated at 3.5 million tons, up 0.3 million from last month and last year. The winter barley crop, grown primarily in central China, was planted in Sep/Oct 2007 and harvested in May/June 2008. Abundant precipitation and seasonable temperatures in the spring created favorable growing conditions and raised yield prospects for the 2008/09 crop. The weather has also been mostly favorable in northern China for the spring barley crop, now in the heading to grain fill stage. However, a persistent drought in the northwest provinces of Xinjiang and Gansu could result in yield losses. *(For more information, contact Paulette Sandene at 202-690-0133.)*

This report uses information from the Foreign Agricultural Service's (FAS) global network of agricultural attachés and counselors, official statistics of foreign governments and other foreign source materials, and the analysis of economic data and satellite imagery. Estimates of foreign area, yield, and production are from the International Production Assessment Division, FAS, and are reviewed by USDA's Inter-Agency Commodity Estimates Committee. Estimates of U.S. area, yield, and production are from USDA's National Agricultural Statistics Service. Numbers within the report may not add to totals because of rounding. This report reflects official USDA estimates released in the World Agricultural Supply and Demand Estimates (WASDE-460) July 11, 2008.

**Printed copies are available from the National Technical Information Service. Download an order form at [http://www.ntis.gov/products/specialty/usda/fas\\_a-g.asp](http://www.ntis.gov/products/specialty/usda/fas_a-g.asp), or call NTIS at 1-800-363-2068.**

The FAS International Production Assessment Branch prepared this report. The next issue of World Agricultural Production will be released after 9:30 a.m. Eastern Time, August 12, 2008.

### Conversion Table

#### Metric tons to bushels

Wheat, soybeans	=	MT * 36.7437
Corn, sorghum, rye	=	MT * 39.36825
Barley	=	MT * 45.929625
Oats	=	MT * 68.894438

#### Metric tons to 480-lb bales

Cotton	=	MT * 4.592917
--------	---	---------------

#### Metric tons to hundredweight

Rice	=	MT * 22.04622
------	---	---------------

#### Area & weight

1 hectare	=	2.471044 acres
1 kilogram	=	2.204622 pounds

For further information, contact:  
U.S. Department of Agriculture  
Foreign Agricultural Service  
Office of Global Analysis  
International Production Assessment Division  
Ag Box 1045, Room 6541, South Building  
Washington, DC 20250-1045  
Telephone: (202) 720-0888 Fax: (202) 720-8880

---

#### GENERAL INFORMATION

Division Director (Acting)	Tom St. Clair	202-720-2974 tom.stclair@fas.usda.gov
Deputy Director	Tom St. Clair	202-720-2974 tom.stclair@fas.usda.gov
Remote Sensing Specialist	Brad Doorn	202-690-0131 doorn@fas.usda.gov
USDA Remote Sensing Advisor	Glenn Bethel	202-720-1280 bethel@fas.usda.gov
Program Analyst	Mary Jackson	202-720-0886 jacksonma@fas.usda.gov
Agricultural Economist	Paul Provance	202-720-0873 paul.provance@fas.usda.gov

#### COUNTRY- AND REGION-SPECIFIC INFORMATION

South America	Denise McWilliams	202-359-8286 denise.mcwilliams@fas.usda.gov
Europe and North Africa	Bryan Purcell	202-690-0138 bryan.purcell@usda.gov
FSU-12, Argentina	Mark Lindeman	202-690-0143 lindeman@fas.usda.gov
Canada, Mexico, Central America, Caribbean	Arnella Trent	202-720-0881 arnella.trent@fas.usda.gov
China, East Asia	Paulette Sandene	202-690-0133 sandene@fas.usda.gov
Other South America		
South Asia, Indonesia, Australia & New Zealand	Jim Crutchfield	202-690-0135 crutchfield@fas.usda.gov
Sub-Saharan Africa, Brazil	Curt Reynolds	202-690-0134 reynoldsc@fas.usda.gov
Middle East and South East Asia	Michael Shean	202-720-7366 shean@fas.usda.gov
Eastern United States	William Baker	202-690-0136 william.baker@fas.usda.gov
Western United States	Vacant	



**Table 01 World Crop Production Summary**  
1000 Metric Tons

Commodity	World -	Total Foreign	North America			EU-27 -	Former Soviet		Asia (WAP)					South America		Selected Other			All Others
			United States	Canada -	Mexico -		Russia -	Ukraine -	China -	India -	Indonesia	Pakistan	Thailand	Argentina	Brazil -	Australia	South Africa	Turkey -	
---Million metric tons---																			
<b>Wheat</b>																			
2006/07	596.2	546.9	49.3	25.3	3.2	124.8	44.9	14.0	108.5	69.4	nr	21.3	nr	15.2	2.2	10.8	2.1	17.5	87.7
2007/08 prel.	610.8	554.5	56.2	20.1	3.6	119.5	49.4	13.9	109.9	75.8	nr	23.3	nr	16.0	3.8	13.0	1.8	15.5	88.9
2008/09 proj.																			
Jun	662.9	596.7	66.2	24.5	3.6	140.0	54.0	21.0	114.0	76.8	nr	21.5	nr	14.5	4.5	24.0	2.0	16.5	79.9
Jul	664.2	597.3	67.0	24.5	3.6	141.7	54.0	21.0	114.0	76.8	nr	21.5	nr	14.5	4.5	25.0	2.0	16.5	77.7
<b>Coarse Grains</b>																			
2006/07	988.5	708.4	280.1	23.1	29.1	138.3	30.2	19.2	159.1	32.5	6.7	3.6	3.9	27.5	53.2	6.6	7.8	10.9	156.6
2007/08 prel.	1,074.5	723.4	351.1	27.8	29.6	137.6	29.3	14.6	159.0	38.2	7.5	3.6	3.9	26.5	59.9	9.9	12.0	10.0	153.8
2008/09 proj.																			
Jun	1,067.6	752.3	315.3	25.0	30.0	149.2	33.6	22.2	160.2	35.4	7.8	3.6	4.0	30.0	59.9	12.2	12.0	10.3	156.9
Jul	1,069.0	754.5	314.5	23.7	30.0	151.4	32.6	21.7	160.5	37.4	7.8	3.6	4.0	30.4	59.9	12.5	12.0	10.3	156.8
<b>Rice, Milled</b>																			
2006/07	420.2	413.9	6.2	nr	0.2	1.7	0.4	0.1	127.2	93.4	35.3	5.2	18.3	0.7	7.7	0.2	nr	0.4	123.3
2007/08 prel.	428.0	421.7	6.3	nr	0.2	1.7	0.5	0.1	129.8	95.7	35.5	5.5	18.5	0.8	8.1	0.0	nr	0.4	125.0
2008/09 proj.																			
Jun	431.4	425.1	6.3	nr	0.2	1.6	0.5	0.1	130.6	96.0	36.3	5.6	18.8	0.9	8.5	0.2	nr	0.4	125.5
Jul	431.7	425.1	6.6	nr	0.2	1.6	0.5	0.1	130.6	96.0	36.3	5.6	18.8	0.9	8.5	0.2	nr	0.4	125.6
<b>Total Grains</b>																			
2006/07	2,004.9	1,669.2	335.7	48.4	32.6	264.8	75.5	33.2	394.8	195.2	42.0	30.1	22.1	43.4	63.1	17.6	9.9	28.9	367.6
2007/08 prel.	2,113.2	1,699.6	413.6	47.9	33.4	258.8	79.2	28.6	398.7	209.7	43.0	32.4	22.4	43.3	71.9	23.0	13.9	25.9	367.7
2008/09 proj.																			
Jun	2,161.9	1,774.1	387.7	49.5	33.7	290.8	88.1	43.2	404.8	208.2	44.0	30.7	22.8	45.4	72.9	36.4	14.0	27.3	362.3
Jul	2,165.0	1,776.9	388.0	48.2	33.7	294.7	87.1	42.7	405.1	210.2	44.0	30.7	22.8	45.8	72.9	37.6	14.0	27.3	360.1
<b>Oilseeds</b>																			
2006/07	403.3	306.7	96.6	12.6	0.6	24.3	8.1	6.8	54.3	29.9	7.9	5.3	0.6	53.2	62.0	1.1	0.6	2.3	37.2
2007/08 prel.	387.8	307.8	80.0	11.6	0.6	24.3	6.9	6.0	52.2	33.9	8.2	4.6	0.6	52.5	64.0	1.4	1.3	2.0	37.8
2008/09 proj.																			
Jun	419.3	326.3	93.0	12.6	0.6	26.7	7.9	8.1	55.8	34.7	9.0	5.2	0.6	53.6	67.0	1.8	1.3	1.9	39.3
Jul	417.3	327.2	90.1	13.0	0.6	26.7	7.8	8.3	55.8	34.5	9.0	5.2	0.6	53.7	66.8	2.2	1.3	1.9	39.8
<b>Cotton</b>																			
2006/07	122.0	100.4	21.6	nr	0.7	1.6	nr	nr	35.5	21.8	0.0	9.9	0.0	0.8	7.0	1.4	0.1	3.8	17.9
2007/08 prel.	119.9	100.7	19.2	nr	0.6	1.5	nr	nr	35.8	25.3	0.0	8.9	0.0	0.7	7.2	0.6	0.1	3.1	16.9
2008/09 proj.																			
Jun	116.4	101.9	14.5	nr	0.7	1.3	nr	nr	35.5	26.5	0.0	9.4	0.0	0.7	6.4	1.5	0.1	2.6	17.2
Jul	114.9	100.9	14.0	nr	0.7	1.3	nr	nr	35.5	25.5	0.0	9.4	0.0	0.8	6.4	1.5	0.1	2.6	17.2

1/ Includes wheat, coarse grains, and rice (milled) shown above.

**Table 02 Wheat Area, Yield, and Production**  
**1000 Metric Tons**

Country / Region	Area (Million hectares)				Yield (Metric tons per hectare)				Production (Million metric tons)				Change in Production			
	Prel.		2008/09 Proj.		Prel.		2008/09 Proj.		Prel.		2008/09 Proj.		From last month		From last year	
	2006/07	2007/08	Jun	Jul	2006/07	2007/08	Jun	Jul	2006/07	2007/08	Jun	Jul	MMT	Percent	MMT	Percent
<b>World</b>	212.42	217.34	223.63	223.87	2.81	2.81	2.96	2.97	596.17	610.77	662.90	664.24	1.34	0.20	53.47	8.75
<b>United States</b>	18.94	20.64	22.77	22.90	2.60	2.72	2.91	2.92	49.32	56.25	66.18	66.97	0.79	1.19	10.72	19.06
<b>Total Foreign</b>	193.48	196.70	200.87	200.97	2.83	2.82	2.97	2.97	546.85	554.52	596.72	597.27	0.55	0.09	42.75	7.71
<b>China, Peoples</b>	22.96	23.10	23.40	23.40	4.72	4.76	4.87	4.87	108.47	109.86	114.00	114.00	0.00	0.00	4.14	3.77
<b>South Asia</b>																
India	26.40	28.00	27.70	27.70	2.63	2.71	2.77	2.77	69.35	75.81	76.78	76.78	0.00	0.00	0.97	1.28
Pakistan	8.36	8.40	8.20	8.20	2.55	2.77	2.62	2.62	21.28	23.30	21.50	21.50	0.00	0.00	-1.80	-7.73
Afghanistan	2.19	2.20	2.18	2.18	1.46	1.73	1.15	1.15	3.20	3.80	2.50	2.50	0.00	0.00	-1.30	-34.21
<b>Former Soviet Union</b>																
Russian Federation	23.70	24.50	25.50	25.50	1.89	2.02	2.12	2.12	44.90	49.40	54.00	54.00	0.00	0.00	4.60	9.31
Ukraine	5.50	5.95	6.80	6.80	2.55	2.34	3.09	3.09	14.00	13.90	21.00	21.00	0.00	0.00	7.10	51.08
Kazakhstan, Republic	12.40	12.75	13.00	13.00	1.09	1.30	1.08	1.08	13.50	16.60	14.00	14.00	0.00	0.00	-2.60	-15.66
Uzbekistan, Republic	1.30	1.30	1.30	1.30	4.50	4.77	4.62	4.62	5.85	6.20	6.00	6.00	0.00	0.00	-0.20	-3.23
<b>EU-27</b>																
France	5.25	5.23	5.48	5.48	6.74	6.27	7.03	7.36	35.36	32.83	38.50	40.30	1.80	4.68	7.47	22.76
Germany	3.12	3.01	3.19	3.19	7.20	6.96	7.49	7.34	22.43	20.93	23.90	23.40	-0.50	-2.09	2.47	11.82
United Kingdom	1.83	1.82	2.03	2.03	8.04	7.29	8.00	8.00	14.74	13.24	16.20	16.20	0.00	0.00	2.96	22.38
Poland	2.18	2.13	2.30	2.30	3.24	3.94	3.70	3.57	7.06	8.38	8.50	8.20	-0.30	-3.53	-0.18	-2.15
Spain	1.96	1.83	2.01	2.01	2.85	3.47	2.89	2.89	5.58	6.35	5.80	5.80	0.00	0.00	-0.55	-8.66
Italy	1.77	2.03	2.50	2.50	3.72	3.52	3.57	3.57	6.59	7.13	8.91	8.91	0.00	0.00	1.78	24.97
Denmark	0.65	0.68	0.67	0.67	7.23	6.63	7.16	7.16	4.70	4.49	4.80	4.80	0.00	0.00	0.31	6.90
Hungary	1.08	1.11	1.13	1.13	4.06	3.59	4.34	4.34	4.38	3.99	4.90	4.90	0.00	0.00	0.91	22.87
Romania	1.80	1.85	2.12	2.12	2.64	1.55	2.74	2.98	4.75	2.88	5.80	6.30	0.50	8.62	3.42	119.05
Bulgaria	0.92	1.04	1.03	1.03	3.45	2.17	3.41	3.61	3.18	2.26	3.50	3.70	0.20	5.71	1.44	63.72
<b>Canada</b>	9.68	8.64	10.00	10.00	2.61	2.32	2.45	2.45	25.27	20.05	24.50	24.50	0.00	0.00	4.45	22.19
<b>Australia</b>	11.80	12.35	13.50	14.00	0.92	1.06	1.78	1.79	10.82	13.04	24.00	25.00	1.00	4.17	11.96	91.73
<b>Middle East</b>																
Turkey	8.60	8.60	8.60	8.60	2.03	1.80	1.92	1.92	17.50	15.50	16.50	16.50	0.00	0.00	1.00	6.45
Iran	6.50	6.90	6.20	5.85	2.23	2.17	1.94	1.71	14.50	15.00	12.00	10.00	-2.00	-16.67	-5.00	-33.33
Syria	1.70	1.70	0.80	0.80	2.47	2.35	2.50	2.50	4.20	4.00	2.00	2.00	0.00	0.00	-2.00	-50.00
<b>North Africa</b>																
Egypt	1.29	1.29	1.29	1.29	6.43	6.43	6.43	6.43	8.27	8.28	8.30	8.30	0.00	0.00	0.03	0.30
Morocco	3.11	2.57	2.80	2.80	2.04	0.62	1.25	1.25	6.33	1.58	3.50	3.50	0.00	0.00	1.92	121.10
<b>Argentina</b>	5.29	5.60	5.10	5.10	2.88	2.86	2.84	2.84	15.20	16.00	14.50	14.50	0.00	0.00	-1.50	-9.38
<b>Others</b>	22.16	22.14	22.06	22.02	2.50	2.70	2.76	2.76	55.45	59.73	60.83	60.68	-0.15	-0.25	0.94	1.58

World and Selected Countries and Regions

7/11/2008 8:47:40 AM



**Table 03 Total Coarse Grain Area, Yield, and Production**  
**1000 Metric Tons**

Country / Region	Area (Million hectares)				Yield (Metric tons per hectare)				Production (Million metric tons)				Change in Production			
	Prel. 2006/07	2008/09 2007/08	2008/09 Jun	Proj. Jul	Prel. 2006/07	2008/09 2007/08	2008/09 Jun	Proj. Jul	Prel. 2006/07	2008/09 2007/08	2008/09 Jun	Proj. Jul	From last month MMT	Percent	From last year MMT	Percent
<b>World</b>	305.57	317.20	313.44	313.68	3.24	3.39	3.41	3.41	988.52	1,074.4	1,067.5	1,069.03	1.47	0.14	-5.43	-0.51
<b>United States</b>	32.53	39.92	36.58	36.70	8.61	8.79	8.62	8.57	280.11	351.06	315.25	314.52	-0.74	-0.23	-36.55	-10.41
<b>Total Foreign</b>	273.04	277.28	276.86	276.98	2.59	2.61	2.72	2.72	708.41	723.40	752.30	754.51	2.21	0.29	31.11	4.30
<b>China, Peoples</b>	30.76	30.90	30.66	30.66	5.17	5.15	5.23	5.23	159.10	159.02	160.20	160.50	0.30	0.19	1.49	0.93
<b>South America</b>																
Brazil	15.15	15.89	16.34	16.34	3.51	3.77	3.66	3.66	53.18	59.94	59.86	59.86	0.00	0.00	-0.09	-0.14
Argentina	4.07	4.65	4.72	4.84	6.77	5.70	6.36	6.29	27.54	26.50	30.02	30.42	0.40	1.33	3.92	14.79
<b>EU-27</b>																
France	3.75	3.71	3.71	3.86	6.98	7.12	7.09	7.22	26.13	26.38	26.28	27.82	1.54	5.86	1.44	5.46
Germany	3.59	3.58	3.68	3.68	5.87	5.50	6.14	6.12	21.05	19.66	22.60	22.50	-0.10	-0.44	2.84	14.46
Poland	6.13	6.18	5.93	5.93	2.39	3.07	3.14	3.10	14.66	18.96	18.60	18.40	-0.20	-1.08	-0.56	-2.95
Spain	4.24	4.28	4.39	4.39	3.07	3.97	3.13	3.24	13.00	16.98	13.74	14.24	0.50	3.64	-2.74	-16.16
Italy	1.60	1.54	1.54	1.54	7.09	7.31	7.60	7.60	11.32	11.26	11.69	11.69	0.00	0.00	0.42	3.74
Hungary	1.75	1.67	1.77	1.77	5.66	3.38	5.54	5.60	9.87	5.64	9.79	9.89	0.10	1.02	4.24	75.17
United Kingdom	1.10	1.13	1.23	1.23	6.31	6.04	6.24	6.24	6.96	6.83	7.66	7.66	0.00	0.00	0.83	12.22
Romania	3.11	3.15	3.30	3.30	3.10	1.50	2.83	2.86	9.64	4.74	9.35	9.45	0.10	1.07	4.71	99.41
<b>Former Soviet Union</b>																
Russian Federation	17.10	17.40	17.70	17.50	1.77	1.69	1.90	1.86	30.20	29.33	33.60	32.60	-1.00	-2.98	3.28	11.17
Ukraine	7.82	6.79	7.55	7.45	2.45	2.15	2.94	2.91	19.18	14.59	22.17	21.67	-0.50	-2.26	7.09	48.58
Kazakhstan, Republic	2.17	2.18	2.18	2.18	1.12	1.38	1.15	1.15	2.42	3.02	2.52	2.52	0.00	0.00	-0.50	-16.58
<b>Africa</b>																
Nigeria	17.95	17.25	17.95	17.95	1.45	1.39	1.44	1.44	26.00	24.00	25.80	25.80	0.00	0.00	1.80	7.50
South Africa, Republic	3.78	4.08	4.28	4.28	2.05	2.94	2.80	2.80	7.76	12.01	11.98	11.98	0.00	0.00	-0.03	-0.25
Ethiopia	5.85	5.96	5.98	5.98	1.89	2.00	1.86	1.86	11.08	11.93	11.10	11.10	0.00	0.00	-0.83	-6.96
Egypt	0.93	0.93	0.94	0.94	7.78	7.78	7.74	7.74	7.21	7.23	7.24	7.24	0.00	0.00	0.00	0.01
<b>India</b>	27.31	28.27	27.75	28.25	1.19	1.35	1.28	1.32	32.54	38.21	35.40	37.40	2.00	5.65	-0.81	-2.12
<b>Southeast Asia</b>																
Indonesia	3.30	3.56	3.70	3.70	2.03	2.11	2.09	2.09	6.70	7.50	7.75	7.75	0.00	0.00	0.25	3.33
Philippines	2.61	2.65	2.70	2.70	2.39	2.74	2.70	2.70	6.23	7.25	7.30	7.30	0.00	0.00	0.05	0.69
Thailand	1.03	1.04	1.05	1.05	3.74	3.79	3.85	3.85	3.87	3.92	4.02	4.02	0.00	0.00	0.10	2.55
<b>Mexico</b>	9.38	9.67	9.66	9.66	3.11	3.06	3.10	3.10	29.14	29.58	29.98	29.98	0.00	0.00	0.40	1.35
<b>Canada</b>	6.12	7.39	6.42	5.96	3.78	3.77	3.90	3.97	23.15	27.84	25.02	23.69	-1.33	-5.32	-4.15	-14.91
<b>Australia</b>	5.92	6.24	6.34	6.44	1.11	1.59	1.92	1.93	6.58	9.90	12.21	12.46	0.25	2.05	2.56	25.87
<b>Turkey</b>	4.43	4.46	4.36	4.36	2.47	2.25	2.38	2.38	10.95	10.05	10.35	10.35	0.00	0.00	0.30	2.99
<b>Others</b>	82.15	82.75	81.07	81.07	1.62	1.58	1.68	1.68	132.96	131.14	136.10	136.25	0.15	0.11	5.10	3.89

World and Selected Countries and Regions

7/11/2008 8:48:00 AM

**Table 04 Corn Area, Yield, and Production**  
**1000 Metric Tons**

Country / Region	Area (Million hectares)				Yield (Metric tons per hectare)				Production (Million metric tons)				Change in Production			
	Prel.		2008/09 Proj.		Prel.		2008/09 Proj.		Prel.		2008/09 Proj.		From last month		From last year	
	2006/07	2007/08	Jun	Jul	2006/07	2007/08	Jun	Jul	2006/07	2007/08	Jun	Jul	MMT	Percent	MMT	Percent
<b>World</b>	149.29	158.78	158.33	158.20	4.78	4.97	4.90	4.90	713.12	788.80	775.26	775.29	0.03	0.00	-13.51	-1.71
<b>United States</b>	28.59	35.02	31.89	31.95	9.36	9.48	9.35	9.31	267.60	332.09	298.08	297.58	-0.51	-0.17	-34.52	-10.39
<b>Total Foreign</b>	120.70	123.76	126.44	126.25	3.69	3.69	3.77	3.78	445.53	456.71	477.18	477.72	0.54	0.11	21.01	4.60
<b>China, Peoples</b>	27.90	28.00	27.80	27.80	5.43	5.42	5.50	5.50	151.60	151.83	153.00	153.00	0.00	0.00	1.17	0.77
<b>South America</b>																
Brazil	14.00	14.70	15.00	15.00	3.64	3.91	3.80	3.80	51.00	57.50	57.00	57.00	0.00	0.00	-0.50	-0.87
Argentina	2.80	3.10	3.10	3.10	8.04	6.77	7.58	7.58	22.50	21.00	23.50	23.50	0.00	0.00	2.50	11.90
<b>Mexico</b>	7.38	7.40	7.45	7.45	3.03	3.04	3.09	3.09	22.35	22.50	23.00	23.00	0.00	0.00	0.50	2.22
<b>EU-27</b>																
France	1.47	1.45	1.40	1.55	8.72	9.87	8.90	8.90	12.78	14.30	12.46	13.80	1.34	10.75	-0.50	-3.50
Italy	1.06	1.01	1.06	1.06	8.87	9.41	9.43	9.43	9.40	9.50	10.00	10.00	0.00	0.00	0.50	5.26
Hungary	1.22	1.12	1.20	1.20	6.64	3.60	6.67	6.67	8.10	4.03	8.00	8.00	0.00	0.00	3.97	98.51
Romania	2.56	2.55	2.67	2.67	3.32	1.54	3.00	3.00	8.50	3.93	8.02	8.02	0.00	0.00	4.10	104.28
Poland	0.31	0.26	0.32	0.32	4.08	6.49	5.47	5.47	1.26	1.70	1.75	1.75	0.00	0.00	0.05	2.94
<b>India</b>	7.80	8.30	8.40	8.40	1.94	2.23	2.08	2.20	15.10	18.54	17.50	18.50	1.00	5.71	-0.04	-0.22
<b>Canada</b>	1.06	1.37	1.20	1.16	8.47	8.50	8.33	8.36	8.99	11.65	10.00	9.70	-0.30	-3.00	-1.95	-16.74
<b>Indonesia</b>	3.30	3.56	3.70	3.70	2.03	2.11	2.09	2.09	6.70	7.50	7.75	7.75	0.00	0.00	0.25	3.33
<b>Ukraine</b>	1.70	1.90	2.40	2.30	3.76	3.89	4.17	4.13	6.40	7.40	10.00	9.50	-0.50	-5.00	2.10	28.38
<b>Serbia</b>	1.17	1.21	1.30	1.30	5.48	3.36	5.00	5.00	6.42	4.05	6.50	6.50	0.00	0.00	2.45	60.34
<b>Egypt</b>	0.72	0.72	0.73	0.73	8.58	8.58	8.52	8.52	6.15	6.17	6.18	6.18	0.00	0.00	0.00	0.02
<b>Philippines</b>	2.61	2.65	2.70	2.70	2.39	2.74	2.70	2.70	6.23	7.25	7.30	7.30	0.00	0.00	0.05	0.69
<b>Vietnam</b>	1.07	1.15	1.20	1.20	3.96	4.00	4.17	4.17	4.25	4.60	5.00	5.00	0.00	0.00	0.40	8.70
<b>Thailand</b>	1.00	1.00	1.01	1.01	3.80	3.85	3.91	3.91	3.80	3.85	3.95	3.95	0.00	0.00	0.10	2.60
<b>Russian Federation</b>	1.00	1.30	1.80	1.60	3.60	3.04	3.78	3.63	3.60	3.95	6.80	5.80	-1.00	-14.71	1.85	46.84
<b>Sub-Saharan Africa</b>																
South Africa, Republic	2.90	3.20	3.40	3.40	2.52	3.59	3.38	3.38	7.30	11.50	11.50	11.50	0.00	0.00	0.00	0.00
Nigeria	4.70	4.00	4.70	4.70	1.66	1.63	1.66	1.66	7.80	6.50	7.80	7.80	0.00	0.00	1.30	20.00
Ethiopia	2.18	2.32	2.30	2.30	2.30	2.41	2.22	2.22	5.00	5.60	5.10	5.10	0.00	0.00	-0.50	-8.93
Zimbabwe	1.25	1.30	1.30	1.30	0.56	0.37	0.65	0.65	0.70	0.48	0.85	0.85	0.00	0.00	0.38	78.95
<b>Turkey</b>	0.43	0.45	0.55	0.55	6.59	6.44	6.36	6.36	2.80	2.90	3.50	3.50	0.00	0.00	0.60	20.69
<b>Others</b>	29.14	29.75	29.75	29.75	2.29	2.30	2.38	2.38	66.80	68.48	70.72	70.72	0.00	0.00	2.24	3.27

World and Selected Countries and Regions

7/11/2008 8:47:41 AM

**Table 05 Barley Area, Yield, and Production**  
**1000 Metric Tons**

Country / Region	Area (Million hectares)				Yield (Metric tons per hectare)				Production (Million metric tons)				Change in Production			
	Prel.		2008/09 Proj.		Prel.		2008/09 Proj.		Prel.		2008/09 Proj.		From last month		From last year	
	2006/07	2007/08	Jun	Jul	2006/07	2007/08	Jun	Jul	2006/07	2007/08	Jun	Jul	MMT	Percent	MMT	Percent
<b>World</b>	57.56	57.65	55.27	55.21	2.39	2.32	2.57	2.58	137.47	133.88	142.04	142.67	0.63	0.44	8.79	6.57
<b>United States</b>	1.19	1.42	1.45	1.47	3.29	3.25	3.52	3.22	3.92	4.61	5.12	4.74	-0.38	-7.33	0.13	2.82
<b>Total Foreign</b>	56.37	56.23	53.81	53.73	2.37	2.30	2.54	2.57	133.55	129.26	136.93	137.93	1.00	0.73	8.66	6.70
<b>Russian Federation</b>	10.00	9.80	9.60	9.60	1.81	1.60	1.82	1.82	18.10	15.65	17.50	17.50	0.00	0.00	1.85	11.82
<b>EU-27</b>																
Germany	2.03	1.93	1.96	1.96	5.91	5.42	6.05	5.99	11.97	10.48	11.85	11.75	-0.10	-0.84	1.27	12.13
France	1.67	1.70	1.75	1.75	6.24	5.57	6.26	6.38	10.40	9.46	10.96	11.16	0.20	1.82	1.70	18.02
Spain	3.23	3.22	3.38	3.38	2.58	3.60	2.81	2.96	8.32	11.60	9.50	10.00	0.50	5.26	-1.60	-13.78
United Kingdom	0.88	0.90	0.99	0.99	5.95	5.66	5.86	5.86	5.24	5.08	5.80	5.80	0.00	0.00	0.72	14.20
Denmark	0.67	0.63	0.65	0.65	4.83	4.91	5.00	5.00	3.25	3.09	3.25	3.25	0.00	0.00	0.17	5.35
Poland	1.22	1.23	1.20	1.20	2.59	3.30	3.08	2.92	3.16	4.07	3.70	3.50	-0.20	-5.41	-0.57	-14.00
Czech Republic	0.53	0.50	0.50	0.50	3.59	3.80	4.10	4.10	1.90	1.89	2.05	2.05	0.00	0.00	0.16	8.24
Finland	0.56	0.53	0.56	0.56	3.50	3.72	3.57	3.93	1.97	1.98	2.00	2.20	0.20	10.00	0.22	10.89
Sweden	0.31	0.32	0.33	0.33	3.63	4.48	4.15	4.15	1.11	1.44	1.35	1.35	0.00	0.00	-0.09	-6.18
Italy	0.33	0.34	0.30	0.30	3.89	3.53	3.90	3.90	1.30	1.20	1.15	1.15	0.00	0.00	-0.05	-4.01
Hungary	0.29	0.32	0.33	0.33	3.68	3.21	3.45	3.75	1.08	1.04	1.13	1.23	0.10	8.85	0.19	18.16
Austria	0.21	0.19	0.19	0.19	4.43	4.20	4.29	4.29	0.91	0.81	0.82	0.82	0.00	0.00	0.00	0.49
<b>Ukraine</b>	5.20	4.10	4.20	4.20	2.18	1.46	2.50	2.50	11.35	6.00	10.50	10.50	0.00	0.00	4.50	75.00
<b>Canada</b>	3.22	4.00	3.50	3.30	2.97	2.75	3.00	3.03	9.57	11.00	10.50	10.00	-0.50	-4.76	-1.00	-9.09
<b>Australia</b>	4.18	4.41	4.50	4.50	1.02	1.34	1.89	1.89	4.26	5.92	8.50	8.50	0.00	0.00	2.58	43.58
<b>Turkey</b>	3.60	3.60	3.40	3.40	2.08	1.81	1.82	1.82	7.50	6.50	6.20	6.20	0.00	0.00	-0.30	-4.62
<b>China, Peoples</b>	0.92	0.95	0.96	0.96	3.61	3.35	3.33	3.65	3.30	3.19	3.20	3.50	0.30	9.38	0.32	9.89
<b>Iran</b>	1.70	1.70	1.30	1.30	1.76	1.76	1.54	1.54	3.00	3.00	2.00	2.00	0.00	0.00	-1.00	-33.33
<b>Morocco</b>	2.19	1.99	2.05	2.05	1.16	0.38	0.59	0.59	2.54	0.76	1.20	1.20	0.00	0.00	0.44	57.27
<b>Kazakhstan,</b>	1.80	1.80	1.80	1.80	1.06	1.39	1.11	1.11	1.90	2.50	2.00	2.00	0.00	0.00	-0.50	-20.00
<b>Ethiopia</b>	1.33	1.33	1.30	1.30	1.60	1.89	1.62	1.62	2.13	2.50	2.10	2.10	0.00	0.00	-0.40	-16.00
<b>Belarus</b>	0.55	0.65	0.55	0.55	2.45	2.62	2.55	2.55	1.35	1.70	1.40	1.40	0.00	0.00	-0.30	-17.65
<b>India</b>	0.70	0.77	0.75	0.75	1.74	1.73	1.87	1.87	1.22	1.33	1.40	1.40	0.00	0.00	0.07	5.26
<b>Argentina</b>	0.34	0.44	0.48	0.60	3.76	3.35	3.44	3.42	1.27	1.46	1.65	2.05	0.40	24.24	0.59	40.41
<b>Mexico</b>	0.35	0.35	0.35	0.35	2.57	2.57	2.57	2.57	0.90	0.90	0.90	0.90	0.00	0.00	0.00	0.00
<b>Iraq</b>	1.41	1.44	0.50	0.50	0.89	0.74	0.90	0.90	1.25	1.06	0.45	0.45	0.00	0.00	-0.61	-57.55
<b>Algeria</b>	0.70	0.70	0.70	0.70	1.00	1.00	1.00	1.00	0.70	0.70	0.70	0.70	0.00	0.00	0.00	0.00
<b>Others</b>	6.27	6.39	5.75	5.75	2.01	2.03	2.29	2.31	12.61	12.96	13.17	13.27	0.10	0.76	0.31	2.38

World and Selected Countries and Regions

7/11/2008 8:47:41 AM

**Table 06 Oats Area, Yield, and Production**  
**1000 Metric Tons**

Country / Region	Area (Million hectares)				Yield (Metric tons per hectare)				Production (Million metric tons)				Change in Production			
	Prel.		2008/09 Proj.		Prel.		2008/09 Proj.		Prel.		2008/09 Proj.		From last month		From last year	
	2006/07	2007/08	Jun	Jul	2006/07	2007/08	Jun	Jul	2006/07	2007/08	Jun	Jul	MMT	Percent	MMT	Percent
<b>World</b>	13.02	13.28	12.71	12.62	1.78	1.93	1.98	1.97	23.17	25.61	25.10	24.84	-0.26	-1.03	-0.77	-3.01
<b>United States</b>	0.63	0.61	0.57	0.58	2.14	2.18	2.30	2.31	1.36	1.33	1.31	1.35	0.04	3.22	0.02	1.35
<b>Total Foreign</b>	12.38	12.68	12.14	12.04	1.76	1.92	1.96	1.95	21.81	24.28	23.79	23.49	-0.30	-1.26	-0.79	-3.25
<b>Russian Federation</b>	3.60	3.70	3.40	3.40	1.36	1.46	1.41	1.41	4.90	5.40	4.80	4.80	0.00	0.00	-0.60	-11.11
<b>Canada</b>	1.54	1.81	1.50	1.30	2.51	2.60	2.67	2.69	3.85	4.70	4.00	3.50	-0.50	-12.50	-1.20	-25.53
<b>EU-27</b>																
Poland	0.54	0.59	0.56	0.56	1.92	2.55	2.59	2.59	1.04	1.49	1.45	1.45	0.00	0.00	-0.04	-2.68
Finland	0.35	0.35	0.36	0.36	2.92	3.52	3.33	3.33	1.03	1.22	1.20	1.20	0.00	0.00	-0.02	-1.80
Spain	0.50	0.53	0.54	0.54	1.84	2.47	2.03	2.03	0.92	1.30	1.10	1.10	0.00	0.00	-0.20	-15.51
Germany	0.18	0.18	0.19	0.19	4.51	4.13	4.47	4.47	0.83	0.72	0.85	0.85	0.00	0.00	0.13	17.57
Sweden	0.20	0.20	0.23	0.23	3.18	4.37	3.91	3.91	0.64	0.89	0.90	0.90	0.00	0.00	0.01	0.90
United Kingdom	0.12	0.13	0.14	0.14	6.02	5.48	6.00	6.00	0.73	0.71	0.81	0.81	0.00	0.00	0.10	13.76
France	0.11	0.11	0.11	0.11	4.44	3.82	4.57	4.57	0.48	0.41	0.48	0.48	0.00	0.00	0.08	18.52
Italy	0.16	0.16	0.15	0.15	2.45	2.33	2.33	2.33	0.40	0.36	0.35	0.35	0.00	0.00	-0.01	-3.05
Denmark	0.07	0.06	0.07	0.07	3.97	4.73	4.69	4.69	0.27	0.30	0.31	0.31	0.00	0.00	0.01	2.35
Romania	0.20	0.21	0.21	0.21	1.71	1.19	1.64	1.64	0.35	0.25	0.35	0.35	0.00	0.00	0.10	38.34
Czech Republic	0.06	0.06	0.06	0.06	2.67	2.69	3.25	3.25	0.16	0.16	0.18	0.18	0.00	0.00	0.02	14.47
Hungary	0.06	0.06	0.06	0.06	2.56	2.07	2.42	2.42	0.15	0.12	0.15	0.15	0.00	0.00	0.02	18.85
Austria	0.04	0.03	0.03	0.03	3.74	3.00	3.50	3.50	0.13	0.09	0.11	0.11	0.00	0.00	0.01	12.90
Ireland	0.02	0.02	0.02	0.02	7.35	7.94	7.94	7.94	0.13	0.14	0.14	0.14	0.00	0.00	0.00	0.00
Lithuania	0.06	0.09	0.06	0.06	1.07	2.09	2.03	2.03	0.06	0.18	0.13	0.13	0.00	0.00	-0.05	-27.78
<b>Australia</b>	1.00	0.90	0.90	1.00	0.75	0.94	1.44	1.50	0.75	0.84	1.30	1.50	0.20	15.38	0.66	77.94
<b>Ukraine</b>	0.44	0.35	0.40	0.40	1.59	1.57	1.75	1.75	0.70	0.55	0.70	0.70	0.00	0.00	0.15	27.27
<b>China, Peoples</b>	0.50	0.50	0.50	0.50	1.20	1.20	1.20	1.20	0.60	0.60	0.60	0.60	0.00	0.00	0.00	0.00
<b>Belarus</b>	0.25	0.25	0.25	0.25	2.20	2.40	2.40	2.40	0.55	0.60	0.60	0.60	0.00	0.00	0.00	0.00
<b>Brazil</b>	0.35	0.35	0.35	0.35	1.36	1.36	1.36	1.36	0.48	0.48	0.48	0.48	0.00	0.00	0.00	0.00
<b>Argentina</b>	0.25	0.26	0.26	0.26	1.60	1.84	1.96	1.96	0.40	0.47	0.50	0.50	0.00	0.00	0.03	6.38
<b>Chile</b>	0.08	0.08	0.08	0.08	4.75	4.75	4.75	4.75	0.38	0.38	0.38	0.38	0.00	0.00	0.00	0.00
<b>Norway</b>	0.09	0.09	0.09	0.09	4.19	4.19	4.19	4.19	0.36	0.36	0.36	0.36	0.00	0.00	0.00	0.00
<b>Turkey</b>	0.16	0.16	0.16	0.16	1.87	1.87	1.87	1.87	0.29	0.29	0.29	0.29	0.00	0.00	0.00	0.00
<b>Kazakhstan,</b>	0.14	0.16	0.16	0.16	1.00	1.00	1.00	1.00	0.14	0.16	0.16	0.16	0.00	0.00	0.00	0.00
<b>Serbia</b>	0.07	0.07	0.07	0.07	1.85	1.85	1.85	1.85	0.12	0.12	0.12	0.12	0.00	0.00	0.00	0.00
<b>Others</b>	1.26	1.26	1.26	1.26	0.79	0.78	0.81	0.81	0.99	0.99	1.02	1.02	0.00	0.00	0.03	2.83

World and Selected Countries and Regions

7/11/2008 8:47:41 AM

**Table 07 Rye Area, Yield, and Production**  
**1000 Metric Tons**

Country / Region	Area (Million hectares)				Yield (Metric tons per hectare)				Production (Million metric tons)				Change in Production			
	Prel.		2008/09 Proj.		Prel.		2008/09 Proj.		Prel.		2008/09 Proj.		From last month		From last year	
	2006/07	2007/08	Jun	Jul	2006/07	2007/08	Jun	Jul	2006/07	2007/08	Jun	Jul	MMT	Percent	MMT	Percent
<b>World</b>	5.69	6.23	6.59	6.58	2.18	2.31	2.43	2.43	12.38	14.38	16.02	15.99	-0.02	-0.15	1.61	11.23
<b>United States</b>	0.11	0.12	0.12	0.11	1.65	1.72	1.70	1.69	0.18	0.20	0.21	0.18	-0.02	-11.59	-0.02	-8.96
<b>Total Foreign</b>	5.58	6.11	6.47	6.47	2.19	2.32	2.44	2.44	12.20	14.18	15.81	15.81	0.00	0.00	1.63	11.51
<b>EU-27</b>																
Poland	1.32	1.32	1.35	1.35	1.99	2.42	2.59	2.59	2.62	3.20	3.50	3.50	0.00	0.00	0.30	9.38
Germany	0.54	0.67	0.71	0.71	4.91	4.02	5.51	5.51	2.64	2.71	3.93	3.93	0.00	0.00	1.22	44.91
Spain	0.10	0.11	0.11	0.11	1.61	2.33	1.75	1.75	0.16	0.26	0.20	0.20	0.00	0.00	-0.06	-22.78
Lithuania	0.05	0.07	0.08	0.08	1.76	2.40	2.38	2.38	0.09	0.18	0.18	0.18	0.00	0.00	0.01	3.43
Latvia	0.04	0.06	0.05	0.05	2.72	3.12	2.65	2.65	0.12	0.18	0.14	0.14	0.00	0.00	-0.04	-20.99
France	0.03	0.03	0.03	0.03	4.65	4.37	4.50	4.50	0.12	0.12	0.12	0.12	0.00	0.00	0.00	-0.85
Denmark	0.03	0.03	0.02	0.02	4.64	4.93	4.75	4.75	0.13	0.14	0.10	0.10	0.00	0.00	-0.04	-31.16
Czech Republic	0.02	0.04	0.04	0.04	3.41	4.68	3.81	3.81	0.08	0.18	0.16	0.16	0.00	0.00	-0.02	-10.11
Austria	0.03	0.05	0.05	0.05	3.48	4.00	3.96	3.96	0.09	0.19	0.20	0.20	0.00	0.00	0.01	5.32
Sweden	0.02	0.03	0.03	0.03	4.92	5.52	5.00	5.00	0.12	0.14	0.15	0.15	0.00	0.00	0.01	8.70
Hungary	0.04	0.04	0.04	0.04	2.54	1.97	2.16	2.16	0.10	0.08	0.10	0.10	0.00	0.00	0.02	23.38
Slovakia	0.01	0.02	0.02	0.02	2.38	2.67	2.81	2.81	0.03	0.06	0.05	0.05	0.00	0.00	-0.01	-19.64
Finland	0.02	0.03	0.04	0.04	2.32	2.72	2.29	2.29	0.05	0.09	0.08	0.08	0.00	0.00	-0.01	-8.05
United Kingdom	0.01	0.01	0.01	0.01	6.14	6.00	6.67	6.67	0.04	0.04	0.04	0.04	0.00	0.00	0.00	11.11
Romania	0.02	0.01	0.01	0.01	1.94	1.69	2.14	2.14	0.03	0.02	0.03	0.03	0.00	0.00	0.01	36.36
Greece	0.01	0.02	0.02	0.02	1.79	1.87	1.81	1.81	0.03	0.03	0.03	0.03	0.00	0.00	0.00	3.57
Portugal	0.02	0.02	0.02	0.02	1.04	0.91	0.95	0.95	0.02	0.02	0.02	0.02	0.00	0.00	0.00	0.00
<b>Russian Federation</b>	1.80	2.10	2.30	2.30	1.67	1.86	1.74	1.74	3.00	3.90	4.00	4.00	0.00	0.00	0.10	2.56
<b>Belarus</b>	0.55	0.60	0.57	0.57	2.18	2.17	1.93	1.93	1.20	1.30	1.10	1.10	0.00	0.00	-0.20	-15.38
<b>Ukraine</b>	0.36	0.35	0.45	0.45	1.67	1.57	1.89	1.89	0.60	0.55	0.85	0.85	0.00	0.00	0.30	54.55
<b>Canada</b>	0.16	0.11	0.12	0.12	2.34	2.09	2.17	2.17	0.38	0.23	0.26	0.26	0.00	0.00	0.03	13.04
<b>Turkey</b>	0.15	0.15	0.15	0.15	1.60	1.60	1.60	1.60	0.24	0.24	0.24	0.24	0.00	0.00	0.00	0.00
<b>Argentina</b>	0.05	0.05	0.05	0.05	1.15	1.15	1.15	1.15	0.06	0.06	0.06	0.06	0.00	0.00	0.00	0.00
<b>Kazakhstan,</b>	0.07	0.07	0.07	0.07	0.71	0.71	0.71	0.71	0.05	0.05	0.05	0.05	0.00	0.00	0.00	0.00
<b>Australia</b>	0.04	0.04	0.04	0.04	0.57	0.57	0.57	0.57	0.02	0.02	0.02	0.02	0.00	0.00	0.00	0.00
<b>Switzerland</b>	0.00	0.00	0.00	0.00	6.67	6.67	6.67	6.67	0.02	0.02	0.02	0.02	0.00	0.00	0.00	0.00
<b>Others</b>	0.08	0.09	0.10	0.10	1.87	2.18	2.08	2.08	0.16	0.20	0.20	0.20	0.00	0.00	0.00	1.01

World and Selected Countries and Regions

7/11/2008 8:47:47 AM

**Table 08 Sorghum Area, Yield, and Production**  
**1000 Metric Tons**

Country / Region	Area (Million hectares)				Yield (Metric tons per hectare)				Production (Million metric tons)				Change in Production			
	2006/07	Prel. 2007/08	2008/09 Proj. Jun	2008/09 Proj. Jul	2006/07	Prel. 2007/08	2008/09 Proj. Jun	2008/09 Proj. Jul	2006/07	Prel. 2007/08	2008/09 Proj. Jun	2008/09 Proj. Jul	From last month MMT	Percent	From last year MMT	Percent
<b>World</b>	39.41	40.49	40.11	40.16	1.45	1.58	1.54	1.54	56.96	63.94	61.89	62.02	0.13	0.21	-1.92	-3.00
<b>United States</b>	2.00	2.75	2.55	2.59	3.53	4.66	4.14	4.12	7.05	12.83	10.54	10.67	0.13	1.20	-2.16	-16.83
<b>Total Foreign</b>	37.42	37.74	37.56	37.56	1.33	1.35	1.37	1.37	49.91	51.11	51.35	51.35	0.00	0.00	0.24	0.47
<b>Sub-Saharan Africa</b>																
Nigeria	7.40	7.40	7.40	7.40	1.42	1.35	1.42	1.42	10.50	10.00	10.50	10.50	0.00	0.00	0.50	5.00
Sudan	6.75	6.60	6.60	6.60	0.77	0.68	0.71	0.71	5.20	4.50	4.70	4.70	0.00	0.00	0.20	4.44
Ethiopia	1.88	1.84	1.88	1.88	1.77	1.76	1.76	1.76	3.33	3.23	3.30	3.30	0.00	0.00	0.07	2.17
Burkina	1.45	1.45	1.45	1.45	1.24	1.24	1.24	1.24	1.80	1.80	1.80	1.80	0.00	0.00	0.00	0.00
Tanzania, United	0.89	0.90	0.90	0.90	0.96	1.00	1.00	1.00	0.85	0.90	0.90	0.90	0.00	0.00	0.00	0.00
Niger	1.50	1.50	1.50	1.50	0.53	0.53	0.53	0.53	0.80	0.80	0.80	0.80	0.00	0.00	0.00	0.00
Uganda	0.31	0.31	0.31	0.31	1.58	1.58	1.58	1.58	0.49	0.49	0.49	0.49	0.00	0.00	0.00	0.00
Mozambique	0.50	0.50	0.50	0.50	0.70	0.70	0.70	0.70	0.35	0.35	0.35	0.35	0.00	0.00	0.00	0.00
Ghana	0.34	0.34	0.34	0.34	1.18	1.03	1.03	1.03	0.40	0.35	0.35	0.35	0.00	0.00	0.00	0.00
South Africa, Republic	0.07	0.09	0.09	0.09	2.51	2.89	2.56	2.56	0.18	0.26	0.23	0.23	0.00	0.00	-0.03	-11.54
<b>South Asia</b>																
India	8.51	8.40	8.10	8.10	0.84	0.92	0.86	0.86	7.15	7.73	7.00	7.00	0.00	0.00	-0.73	-9.44
Pakistan	0.26	0.25	0.24	0.24	0.61	0.60	0.60	0.60	0.16	0.15	0.15	0.15	0.00	0.00	-0.01	-3.97
<b>Mexico</b>	1.60	1.86	1.80	1.80	3.64	3.29	3.33	3.33	5.81	6.10	6.00	6.00	0.00	0.00	-0.10	-1.64
<b>China, Peoples</b>	0.57	0.55	0.50	0.50	3.53	3.45	3.60	3.60	2.00	1.90	1.80	1.80	0.00	0.00	-0.10	-5.26
<b>Australia</b>	0.61	0.80	0.80	0.80	2.09	3.36	2.50	2.50	1.28	2.69	2.00	2.00	0.00	0.00	-0.69	-25.68
<b>Egypt</b>	0.16	0.16	0.16	0.16	5.63	5.63	5.63	5.63	0.90	0.90	0.90	0.90	0.00	0.00	0.00	0.00
<b>EU-27</b>																
France	0.06	0.05	0.05	0.05	5.56	6.10	6.38	6.38	0.31	0.31	0.30	0.30	0.00	0.00	-0.01	-1.64
Italy	0.04	0.03	0.03	0.03	5.67	5.74	5.83	5.83	0.22	0.20	0.18	0.18	0.00	0.00	-0.02	-10.26
<b>Others</b>	4.54	4.71	4.92	4.92	1.80	1.80	1.95	1.95	8.19	8.46	9.61	9.61	0.00	0.00	1.15	13.61

World and Selected Countries and Regions

7/11/2008 8:47:42 AM

**Table 09 Rice Area, Yield, and Production**  
**1000 Metric Tons**

Country / Region	Area (Million hectares)				Yield (Metric tons per hectare)				Production (Million metric tons)				Change in Production			
	Prel. 2006/07	2008/09 2007/08	2008/09 Proj. Jun	2008/09 Proj. Jul	Prel. 2006/07	2008/09 2007/08	2008/09 Proj. Jun	2008/09 Proj. Jul	Prel. 2006/07	2008/09 2007/08	2008/09 Proj. Jun	2008/09 Proj. Jul	From last month MMT	Percent	From last year MMT	Percent
<b>World</b>	153.75	154.44	155.22	155.29	4.07	4.13	4.14	4.14	420.18	428.02	431.41	431.70	0.29	0.07	3.68	0.86
<b>United States</b>	1.14	1.11	1.12	1.17	7.69	8.05	8.01	7.98	6.24	6.31	6.30	6.56	0.26	4.06	0.24	3.83
<b>Total Foreign</b>	152.61	153.32	154.10	154.12	4.05	4.10	4.11	4.11	413.95	421.71	425.11	425.14	0.04	0.01	3.44	0.82
<b>East Asia</b>																
China, Peoples	29.30	29.60	29.75	29.75	6.20	6.27	6.27	6.27	127.20	129.84	130.55	130.55	0.00	0.00	0.71	0.55
Japan	1.69	1.67	1.65	1.65	6.34	6.51	6.58	6.58	7.79	7.93	7.90	7.90	0.00	0.00	-0.03	-0.38
Korea, Republic of	0.96	0.95	0.94	0.94	6.62	6.28	6.45	6.45	4.68	4.41	4.50	4.50	0.00	0.00	0.09	2.09
Korea, Democratic	0.60	0.60	0.59	0.59	4.89	3.94	4.62	4.47	1.90	1.53	1.77	1.70	-0.07	-3.95	0.17	11.33
<b>South Asia</b>																
India	44.00	44.00	44.50	44.50	3.18	3.26	3.24	3.24	93.35	95.68	96.00	96.00	0.00	0.00	0.32	0.33
Bangladesh	11.20	11.10	11.30	11.30	3.88	3.87	3.90	3.90	29.00	28.60	29.40	29.40	0.00	0.00	0.80	2.80
Pakistan	2.58	2.55	2.60	2.60	3.03	3.24	3.23	3.23	5.20	5.50	5.60	5.60	0.00	0.00	0.10	1.82
<b>Southeast Asia</b>																
Indonesia	11.90	11.90	11.90	11.90	4.60	4.63	4.72	4.72	35.30	35.50	36.25	36.25	0.00	0.00	0.75	2.11
Vietnam	7.20	7.36	7.32	7.36	4.82	4.93	4.88	4.88	22.92	23.92	23.56	23.70	0.14	0.59	-0.22	-0.93
Thailand	10.27	10.43	10.50	10.50	2.69	2.69	2.71	2.71	18.25	18.50	18.80	18.80	0.00	0.00	0.30	1.62
Burma, Union of	7.00	7.09	6.39	6.39	2.61	2.61	2.54	2.54	10.60	10.73	9.40	9.40	0.00	0.00	-1.33	-12.40
Philippines	4.19	4.25	4.30	4.30	3.70	3.84	3.94	3.94	10.09	10.60	11.00	11.00	0.00	0.00	0.40	3.77
Cambodia	2.52	2.53	2.60	2.60	2.49	2.56	2.58	2.58	3.95	4.08	4.23	4.23	0.00	0.00	0.15	3.68
Laos	0.76	0.76	0.78	0.78	3.50	3.49	3.53	3.53	1.60	1.59	1.65	1.65	0.00	0.00	0.06	3.77
Malaysia	0.65	0.66	0.68	0.68	3.30	3.45	3.46	3.46	1.39	1.48	1.52	1.52	0.00	0.00	0.04	2.70
<b>South America</b>																
Brazil	2.98	2.93	3.10	3.10	3.81	4.08	4.03	4.03	7.70	8.13	8.50	8.50	0.00	0.00	0.37	4.56
Peru	0.35	0.35	0.35	0.35	6.63	7.04	7.04	7.04	1.60	1.70	1.70	1.70	0.00	0.00	0.00	0.00
<b>Sub-Saharan Africa</b>																
Nigeria	2.05	2.20	2.30	2.30	2.36	2.27	2.25	2.25	2.90	3.00	3.10	3.10	0.00	0.00	0.10	3.33
Madagascar	1.35	1.35	1.33	1.33	2.59	2.67	2.72	2.72	2.24	2.30	2.30	2.30	0.00	0.00	0.00	0.00
<b>EU-27</b>																
Italy	0.23	0.23	0.23	0.23	6.28	6.28	6.28	6.28	0.87	0.87	0.87	0.87	0.00	0.00	0.00	0.00
Spain	0.11	0.10	0.09	0.09	7.04	7.23	7.22	7.22	0.52	0.52	0.46	0.46	0.00	0.00	-0.06	-10.85
<b>Egypt</b>	0.67	0.67	0.67	0.67	10.08	10.07	10.04	10.04	4.38	4.39	4.39	4.39	0.00	0.00	0.00	0.05
<b>Iran</b>	0.62	0.63	0.64	0.64	4.84	5.24	5.33	5.33	1.98	2.18	2.25	2.25	0.00	0.00	0.07	3.31
<b>Others</b>	9.47	9.43	9.61	9.59	3.01	3.06	3.11	3.11	18.56	18.74	19.41	19.38	-0.03	-0.17	0.64	3.39

World and Selected Countries and Regions  
Yield is on a rough basis, before the milling process  
Production is on a milled basis, after the milling process

7/11/2008 8:47:42 AM



**Table 10 5-Major Oilseeds; Area, Yield, and Production 1/  
1000 Metric Tons**

Country / Region	Area (Million hectares)				Yield (Metric tons per hectare)				Production (Million metric tons)				Change in Production			
	Prel. 2006/07	2007/08	2008/09 Proj. Jun	2008/09 Proj. Jul	Prel. 2006/07	2007/08	2008/09 Proj. Jun	2008/09 Proj. Jul	Prel. 2006/07	2007/08	2008/09 Proj. Jun	2008/09 Proj. Jul	From last month MMT	Percent	From last year MMT	Percent
<b>World</b>	198.41	193.82	203.48	203.69	1.95	1.91	1.97	1.96	387.89	371.05	401.69	399.68	-2.01	-0.50	28.63	7.71
<b>United States</b>	36.96	31.44	35.09	34.27	2.61	2.54	2.65	2.63	96.61	80.00	93.04	90.13	-2.91	-3.13	10.13	12.66
<b>Total Foreign</b>	161.45	162.38	168.39	169.42	1.80	1.79	1.83	1.83	291.27	291.05	308.65	309.55	0.90	0.29	18.50	6.36
<b>South America</b>																
Brazil	21.99	22.58	23.84	23.67	2.82	2.84	2.81	2.82	61.98	64.01	67.00	66.73	-0.26	-0.39	2.72	4.25
Argentina	19.30	20.00	20.37	20.41	2.75	2.62	2.63	2.63	53.16	52.49	53.64	53.67	0.03	0.06	1.19	2.27
Paraguay	2.75	2.98	3.15	3.15	2.41	2.44	2.46	2.46	6.61	7.28	7.74	7.74	0.00	0.00	0.46	6.32
Bolivia	1.01	0.87	0.86	0.86	1.80	1.36	2.07	2.07	1.82	1.18	1.78	1.78	0.00	0.00	0.60	50.85
Uruguay	0.41	0.49	0.59	0.59	2.11	2.00	2.00	2.00	0.86	0.99	1.19	1.19	0.00	0.00	0.20	20.61
<b>China, Peoples</b>	25.75	25.20	26.15	26.15	2.11	2.07	2.13	2.13	54.31	52.17	55.81	55.81	0.00	0.00	3.64	6.98
<b>South Asia</b>																
India	31.98	32.30	33.70	33.90	0.92	1.03	1.01	1.00	29.28	33.17	34.00	33.80	-0.20	-0.59	0.63	1.91
Pakistan	4.01	4.00	4.08	4.08	1.31	1.14	1.28	1.28	5.25	4.57	5.21	5.21	0.00	0.00	0.64	13.94
<b>Former Soviet Union</b>																
Russian Federation	7.16	6.24	6.80	6.90	1.13	1.11	1.16	1.13	8.08	6.93	7.90	7.80	-0.10	-1.27	0.87	12.49
Ukraine	5.00	4.93	5.75	5.95	1.36	1.21	1.41	1.39	6.79	5.95	8.10	8.30	0.20	2.47	2.35	39.50
Uzbekistan, Republic	1.43	1.45	1.42	1.42	1.61	1.66	1.62	1.62	2.30	2.40	2.30	2.30	0.00	0.00	-0.10	-4.17
<b>Canada</b>	6.52	7.16	7.20	7.57	1.94	1.62	1.75	1.71	12.61	11.57	12.61	12.96	0.35	2.78	1.39	11.97
<b>EU-27</b>																
France	2.10	2.17	2.11	2.11	2.69	2.78	2.91	2.91	5.63	6.01	6.13	6.13	0.00	0.00	0.12	2.03
Germany	1.46	1.57	1.45	1.45	3.70	3.43	3.71	3.71	5.40	5.37	5.36	5.36	0.00	0.00	-0.01	-0.20
United Kingdom	0.58	0.68	0.65	0.65	3.29	3.10	3.31	3.31	1.89	2.11	2.15	2.15	0.00	0.00	0.04	1.99
Romania	1.34	1.25	1.35	1.35	1.52	0.80	1.75	1.75	2.04	1.00	2.36	2.36	0.00	0.00	1.36	136.44
Czech Republic	0.35	0.37	0.37	0.37	2.86	2.98	2.83	2.83	1.00	1.10	1.06	1.06	0.00	0.00	-0.04	-3.74
Hungary	0.71	0.76	0.83	0.83	2.25	2.07	2.19	2.19	1.60	1.58	1.82	1.82	0.00	0.00	0.25	15.52
Poland	0.63	0.80	0.76	0.76	2.63	2.66	2.92	2.92	1.66	2.13	2.21	2.21	0.00	0.00	0.08	3.62
Italy	0.33	0.27	0.21	0.21	2.64	2.66	2.69	2.69	0.86	0.71	0.57	0.57	0.00	0.00	-0.14	-20.08
<b>Australia</b>	1.26	1.23	1.37	1.47	0.85	1.14	1.32	1.51	1.08	1.40	1.81	2.21	0.40	22.09	0.81	57.93
<b>Turkey</b>	1.16	1.05	0.99	0.99	1.95	1.85	1.88	1.88	2.26	1.95	1.86	1.86	0.00	0.00	-0.09	-4.62
<b>Sub-Saharan Africa</b>																
Nigeria	2.05	2.08	2.08	2.08	1.04	1.05	1.05	1.05	2.13	2.19	2.19	2.19	0.00	0.00	0.00	0.00
South Africa, Republic	0.55	0.81	0.87	0.87	1.11	1.60	1.52	1.52	0.62	1.30	1.31	1.31	0.00	0.00	0.02	1.15
<b>Southeast Asia</b>																
Indonesia	1.38	1.33	1.38	1.38	1.47	1.46	1.50	1.50	2.03	1.94	2.06	2.06	0.00	0.00	0.12	6.12
<b>Others</b>	20.26	19.82	20.08	20.27	0.99	0.99	1.02	1.03	20.02	19.56	20.49	20.97	0.48	2.32	1.40	7.18

World and Selected Countries and Regions  
1/ (soybeans, sunflowerseed, rapeseed, cottonseed, and peanuts)

7/11/2008 8:47:49 AM

**Table 11 Soybean Area, Yield, and Production**  
**1000 Metric Tons**

Country / Region	Area (Million hectares)				Yield (Metric tons per hectare)				Production (Million metric tons)				Change in Production			
	Prel. 2006/07	2007/08	2008/09 Proj. Jun	2008/09 Proj. Jul	Prel. 2006/07	2007/08	2008/09 Proj. Jun	2008/09 Proj. Jul	Prel. 2006/07	2007/08	2008/09 Proj. Jun	2008/09 Proj. Jul	From last month MMT	Percent	From last year MMT	Percent
<b>World</b>	94.11	90.53	97.68	97.00	2.51	2.42	2.46	2.45	236.56	218.80	240.67	237.80	-2.87	-1.19	19.00	8.68
<b>United States</b>	30.19	25.42	29.87	29.19	2.87	2.77	2.83	2.80	86.77	70.36	84.50	81.65	-2.86	-3.38	11.29	16.05
<b>Total Foreign</b>	63.92	65.11	67.82	67.82	2.34	2.28	2.30	2.30	149.79	148.44	156.17	156.15	-0.02	-0.01	7.71	5.20
<b>South America</b>																
Brazil	20.70	21.30	22.50	22.50	2.85	2.86	2.84	2.84	59.00	61.00	64.00	64.00	0.00	0.00	3.00	4.92
Argentina	16.30	16.80	17.10	17.10	2.99	2.80	2.81	2.81	48.80	47.00	48.00	48.00	0.00	0.00	1.00	2.13
Paraguay	2.40	2.60	2.75	2.75	2.58	2.62	2.62	2.62	6.20	6.80	7.20	7.20	0.00	0.00	0.40	5.88
Bolivia	0.85	0.73	0.72	0.72	1.94	1.44	2.29	2.29	1.65	1.05	1.65	1.65	0.00	0.00	0.60	57.14
Uruguay	0.37	0.45	0.54	0.54	2.24	2.00	2.00	2.00	0.82	0.90	1.08	1.08	0.00	0.00	0.19	20.67
<b>East Asia</b>																
China, Peoples	9.10	8.70	9.40	9.40	1.67	1.55	1.70	1.70	15.20	13.50	16.00	16.00	0.00	0.00	2.50	18.52
Korea, Republic of	0.09	0.08	0.09	0.09	1.73	1.50	1.76	1.59	0.16	0.11	0.15	0.14	-0.02	-10.00	0.02	18.42
Korea, Democratic	0.14	0.14	0.14	0.14	1.19	1.19	1.19	1.19	0.16	0.16	0.16	0.16	0.00	0.00	0.00	0.00
Japan	0.14	0.14	0.14	0.14	1.58	1.63	1.63	1.63	0.23	0.23	0.23	0.23	0.00	0.00	0.00	0.00
<b>India</b>	8.12	8.80	9.10	9.10	0.95	1.06	0.96	0.96	7.69	9.30	8.70	8.70	0.00	0.00	-0.60	-6.45
<b>Canada</b>	1.20	1.17	1.21	1.21	2.88	2.31	2.53	2.53	3.46	2.70	3.06	3.06	0.00	0.00	0.36	13.33
<b>Former Soviet Union</b>																
Ukraine	0.71	0.63	0.55	0.55	1.25	1.03	1.27	1.27	0.89	0.65	0.70	0.70	0.00	0.00	0.05	7.69
Russian Federation	0.82	0.71	0.73	0.73	0.99	0.92	0.97	0.97	0.81	0.65	0.70	0.70	0.00	0.00	0.05	7.36
<b>Southeast Asia</b>																
Indonesia	0.62	0.60	0.62	0.62	1.31	1.30	1.29	1.29	0.82	0.78	0.80	0.80	0.00	0.00	0.02	2.56
Vietnam	0.21	0.28	0.28	0.28	1.47	1.46	1.46	1.46	0.31	0.41	0.41	0.41	0.00	0.00	0.00	0.00
Thailand	0.15	0.14	0.12	0.12	1.45	1.50	1.50	1.50	0.21	0.21	0.18	0.18	0.00	0.00	-0.03	-14.29
Burma, Union of	0.15	0.15	0.15	0.15	1.17	1.17	1.17	1.17	0.18	0.18	0.18	0.18	0.00	0.00	0.00	0.00
<b>EU-27</b>																
Italy	0.18	0.13	0.10	0.10	3.10	3.14	3.20	3.20	0.55	0.41	0.32	0.32	0.00	0.00	-0.09	-21.57
France	0.05	0.03	0.03	0.03	2.73	2.75	2.67	2.67	0.12	0.09	0.08	0.08	0.00	0.00	-0.01	-9.09
<b>Sub-Saharan Africa</b>																
South Africa, Republic	0.18	0.18	0.20	0.20	1.13	1.83	1.75	1.75	0.21	0.32	0.35	0.35	0.00	0.00	0.03	9.38
Nigeria	0.43	0.44	0.44	0.44	1.02	1.02	1.02	1.02	0.44	0.45	0.45	0.45	0.00	0.00	0.00	0.00
Uganda	0.15	0.15	0.15	0.15	1.10	1.10	1.10	1.10	0.17	0.17	0.17	0.17	0.00	0.00	0.00	0.00
<b>Serbia</b>	0.17	0.15	0.13	0.13	2.12	2.20	2.55	2.55	0.35	0.33	0.34	0.34	0.00	0.00	0.01	2.12
<b>Mexico</b>	0.05	0.05	0.07	0.07	1.48	1.43	1.54	1.54	0.08	0.08	0.10	0.10	0.00	0.00	0.02	31.58
<b>Iran</b>	0.10	0.10	0.11	0.11	2.40	2.40	2.36	2.36	0.24	0.24	0.26	0.26	0.00	0.00	0.02	8.33
<b>Others</b>	0.57	0.47	0.47	0.47	1.90	1.57	1.95	1.95	1.08	0.74	0.91	0.91	0.00	0.00	0.17	23.41

World and Selected Countries and Regions

7/11/2008 8:47:38 AM

**Table 12 Cottonseed Area, Yield, and Production**  
**1000 Metric Tons**

Country / Region	Area (Million hectares)				Yield (Metric tons per hectare)				Production (Million metric tons)				Change in Production			
	Prel. 2006/07	2008/09 2007/08	2008/09 Proj. Jun	2008/09 Proj. Jul	Prel. 2006/07	2008/09 2007/08	2008/09 Proj. Jun	2008/09 Proj. Jul	Prel. 2006/07	2008/09 2007/08	2008/09 Proj. Jun	2008/09 Proj. Jul	From last month MMT	From last month Percent	From last year MMT	From last year Percent
<b>World</b>	33.79	32.68	31.64	31.63	1.36	1.39	1.43	1.41	45.83	45.51	45.08	44.71	-0.37	-0.83	-0.80	-1.76
<b>United States</b>	5.15	4.25	3.44	3.28	1.29	1.41	1.37	1.41	6.67	5.98	4.73	4.62	-0.11	-2.29	-1.36	-22.74
<b>Total Foreign</b>	28.64	28.44	28.20	28.35	1.37	1.39	1.43	1.41	39.16	39.53	40.36	40.09	-0.27	-0.66	0.56	1.41
<b>China, Peoples</b>	6.00	6.20	6.00	6.00	2.32	2.26	2.32	2.32	13.91	14.03	13.91	13.91	0.00	0.00	-0.12	-0.86
<b>South Asia</b>																
India	9.17	9.50	9.50	9.60	1.00	1.12	1.19	1.15	9.13	10.60	11.30	11.00	-0.30	-2.65	0.40	3.77
Pakistan	3.25	3.25	3.25	3.25	1.33	1.14	1.29	1.29	4.32	3.70	4.20	4.20	0.00	0.00	0.50	13.51
<b>Former Soviet Union</b>																
Uzbekistan, Republic	1.43	1.45	1.42	1.42	1.61	1.66	1.62	1.62	2.30	2.40	2.30	2.30	0.00	0.00	-0.10	-4.17
Turkmenistan	0.60	0.60	0.60	0.60	0.78	0.85	0.83	0.83	0.47	0.51	0.50	0.50	0.00	0.00	-0.01	-1.96
Tajikistan, Republic of	0.26	0.25	0.24	0.24	1.00	0.90	0.94	0.94	0.26	0.23	0.23	0.23	0.00	0.00	0.00	0.00
Kazakhstan, Republic	0.20	0.20	0.16	0.16	1.26	1.23	1.25	1.25	0.25	0.25	0.20	0.20	0.00	0.00	-0.05	-18.37
<b>South America</b>																
Brazil	1.09	1.09	1.15	0.98	2.38	2.44	2.30	2.43	2.61	2.66	2.65	2.38	-0.26	-9.94	-0.28	-10.48
Argentina	0.40	0.33	0.36	0.38	0.71	0.73	0.72	0.68	0.29	0.24	0.26	0.26	0.00	-0.77	0.02	7.50
<b>Middle East</b>																
Turkey	0.64	0.55	0.45	0.45	2.05	2.09	2.00	2.00	1.31	1.15	0.90	0.90	0.00	0.00	-0.25	-21.74
Syria	0.21	0.20	0.18	0.18	2.10	2.76	2.78	2.78	0.45	0.55	0.50	0.50	0.00	0.00	-0.05	-9.26
Iran	0.12	0.12	0.12	0.12	1.02	0.98	0.98	0.98	0.12	0.12	0.12	0.12	0.00	0.00	0.00	0.00
<b>Australia</b>	0.15	0.08	0.18	0.18	2.90	2.45	2.63	2.63	0.42	0.18	0.46	0.46	0.00	0.00	0.28	150.00
<b>EU-27</b>																
Greece	0.33	0.32	0.25	0.25	1.37	1.36	1.42	1.42	0.45	0.43	0.36	0.36	0.00	0.00	-0.07	-17.02
Spain	0.05	0.05	0.06	0.06	1.27	1.06	0.89	0.89	0.07	0.06	0.05	0.05	0.00	0.00	-0.01	-14.04
<b>Sub-Saharan Africa</b>																
Burkina	0.70	0.40	0.43	0.52	0.51	0.47	0.49	0.54	0.36	0.19	0.21	0.28	0.08	36.71	0.10	52.15
Mali	0.46	0.28	0.30	0.35	0.49	0.45	0.45	0.53	0.22	0.13	0.13	0.18	0.05	37.31	0.06	44.88
Cameroon	0.20	0.14	0.20	0.16	0.91	0.80	0.69	0.94	0.18	0.11	0.14	0.15	0.01	9.49	0.04	33.93
Sudan	0.16	0.06	0.06	0.16	0.72	0.93	0.85	0.96	0.12	0.06	0.05	0.15	0.10	201.96	0.10	175.00
Zimbabwe	0.35	0.40	0.40	0.40	0.54	0.52	0.57	0.55	0.19	0.21	0.23	0.22	-0.01	-4.39	0.01	4.31
Nigeria	0.38	0.40	0.40	0.40	0.46	0.49	0.49	0.49	0.17	0.19	0.19	0.19	0.00	0.00	0.00	0.00
Benin	0.23	0.23	0.25	0.30	0.68	0.71	0.66	0.72	0.16	0.17	0.17	0.22	0.05	30.30	0.05	30.30
Uganda	0.27	0.27	0.27	0.27	0.31	0.19	0.24	0.32	0.08	0.05	0.07	0.09	0.02	31.82	0.04	67.31
<b>Egypt</b>	0.25	0.25	0.14	0.14	1.28	1.36	1.50	1.50	0.32	0.34	0.20	0.20	0.00	0.00	-0.14	-40.59
<b>Mexico</b>	0.12	0.12	0.12	0.12	1.89	1.85	1.85	1.85	0.22	0.23	0.23	0.23	0.00	0.00	0.00	0.00
<b>Burma, Union of</b>	0.30	0.30	0.30	0.30	0.53	0.53	0.53	0.53	0.16	0.16	0.16	0.16	0.00	0.00	0.00	0.00
<b>Others</b>	1.34	1.39	1.43	1.38	0.49	0.43	0.46	0.48	0.65	0.60	0.66	0.66	0.00	-0.45	0.06	9.12

World and Selected Countries and Regions

7/11/2008 8:47:38 AM

**Table 13 Peanut Area, Yield, and Production**  
**1000 Metric Tons**

Country / Region	Area (Million hectares)				Yield (Metric tons per hectare)				Production (Million metric tons)				Change in Production			
	Prel.		2008/09 Proj.		Prel.		2008/09 Proj.		Prel.		2008/09 Proj.		From last month		From last year	
	2006/07	2007/08	Jun	Jul	2006/07	2007/08	Jun	Jul	2006/07	2007/08	Jun	Jul	MMT	Percent	MMT	Percent
<b>World</b>	20.27	20.83	21.33	21.46	1.51	1.55	1.56	1.56	30.53	32.27	33.23	33.41	0.18	0.54	1.15	3.55
<b>United States</b>	0.49	0.48	0.56	0.58	3.21	3.51	3.43	3.43	1.57	1.70	1.94	1.98	0.04	2.22	0.28	16.56
<b>Total Foreign</b>	19.78	20.34	20.77	20.89	1.46	1.50	1.51	1.50	28.95	30.57	31.30	31.43	0.14	0.43	0.86	2.83
<b>China, Peoples</b>	3.80	3.80	3.90	3.90	3.35	3.43	3.44	3.44	12.74	13.02	13.40	13.40	0.00	0.00	0.38	2.95
<b>South Asia</b>																
India	5.91	6.40	6.70	6.80	0.91	1.03	1.01	1.01	5.39	6.60	6.80	6.90	0.10	1.47	0.30	4.55
Pakistan	0.11	0.11	0.11	0.11	0.90	0.90	0.90	0.90	0.10	0.10	0.10	0.10	0.00	0.00	0.00	0.00
<b>Sub-Saharan Africa</b>																
Nigeria	1.24	1.25	1.25	1.25	1.23	1.25	1.25	1.25	1.52	1.55	1.55	1.55	0.00	0.00	0.00	0.00
Senegal	0.59	0.65	0.65	0.65	0.77	0.65	0.72	0.72	0.46	0.42	0.47	0.47	0.00	0.00	0.05	11.90
Chad	0.48	0.50	0.50	0.50	0.94	0.94	0.94	0.94	0.45	0.47	0.47	0.47	0.00	0.00	0.00	0.00
Ghana	0.47	0.47	0.47	0.47	0.94	0.94	0.94	0.94	0.44	0.44	0.44	0.44	0.00	0.00	0.00	0.00
Sudan	1.00	1.00	1.00	1.00	0.85	0.85	0.85	0.85	0.85	0.85	0.85	0.85	0.00	0.00	0.00	0.00
Congo, Democratic	0.48	0.48	0.48	0.48	0.78	0.78	0.78	0.78	0.37	0.37	0.37	0.37	0.00	0.00	0.00	0.00
Burkina	0.35	0.35	0.35	0.35	0.99	1.01	1.01	1.01	0.34	0.35	0.35	0.35	0.00	0.00	0.00	0.00
Guinea	0.21	0.21	0.21	0.21	1.24	1.24	1.24	1.24	0.26	0.26	0.26	0.26	0.00	0.00	0.00	0.00
Cameroon	0.31	0.31	0.31	0.31	0.76	0.77	0.77	0.77	0.24	0.24	0.24	0.24	0.00	0.00	0.00	0.00
Mali	0.25	0.25	0.25	0.25	1.10	1.10	1.10	1.10	0.28	0.28	0.28	0.28	0.00	0.00	0.00	0.00
Malawi	0.22	0.22	0.22	0.22	0.93	1.20	1.20	1.20	0.20	0.27	0.27	0.27	0.00	0.00	0.00	0.00
Cote d'Ivoire	0.15	0.15	0.15	0.15	1.00	1.00	1.00	1.00	0.15	0.15	0.15	0.15	0.00	0.00	0.00	0.00
Uganda	0.21	0.21	0.21	0.21	0.70	0.70	0.70	0.70	0.15	0.15	0.15	0.15	0.00	0.00	0.00	0.00
Central African	0.13	0.13	0.13	0.13	1.12	1.12	1.12	1.12	0.14	0.14	0.14	0.14	0.00	0.00	0.00	0.00
Benin	0.16	0.16	0.16	0.16	0.81	0.81	0.81	0.81	0.13	0.13	0.13	0.13	0.00	0.00	0.00	0.00
Mozambique	0.29	0.29	0.29	0.29	0.38	0.38	0.38	0.38	0.11	0.11	0.11	0.11	0.00	0.00	0.00	0.00
Niger	0.26	0.26	0.26	0.26	0.42	0.42	0.42	0.42	0.11	0.11	0.11	0.11	0.00	0.00	0.00	0.00
South Africa, Republic	0.04	0.06	0.05	0.05	1.93	2.09	2.00	2.00	0.08	0.12	0.10	0.10	0.00	0.00	-0.02	-13.04
<b>Southeast Asia</b>																
Indonesia	0.75	0.72	0.75	0.75	1.60	1.60	1.67	1.67	1.20	1.15	1.25	1.25	0.00	0.00	0.10	8.70
Burma, Union of	0.80	0.80	0.80	0.80	1.10	1.10	1.10	1.10	0.88	0.88	0.88	0.88	0.00	0.00	0.00	0.00
Vietnam	0.26	0.26	0.26	0.26	1.77	1.77	1.77	1.77	0.46	0.46	0.46	0.46	0.00	0.00	0.00	0.00
Thailand	0.07	0.07	0.07	0.07	1.77	1.77	1.77	1.77	0.12	0.12	0.12	0.12	0.00	0.00	0.00	0.00
<b>South America</b>																
Argentina	0.20	0.22	0.21	0.23	2.88	2.80	2.90	2.80	0.58	0.62	0.61	0.64	0.04	5.75	0.03	4.72
Brazil	0.12	0.12	0.12	0.12	2.17	2.17	2.17	2.17	0.25	0.25	0.25	0.25	0.00	0.00	0.00	0.00
<b>Egypt</b>	0.06	0.06	0.06	0.06	3.17	3.17	3.17	3.17	0.19	0.19	0.19	0.19	0.00	0.00	0.00	0.00
<b>Mexico</b>	0.05	0.04	0.05	0.05	1.56	1.69	1.56	1.56	0.07	0.07	0.07	0.07	0.00	0.00	0.00	6.06
<b>Others</b>	0.84	0.83	0.84	0.84	0.87	0.89	0.90	0.90	0.73	0.74	0.75	0.75	0.00	0.00	0.01	1.63

**Table 14 Sunflowerseed Area, Yield, and Production**  
**1000 Metric Tons**

Country / Region	Area (Million hectares)				Yield (Metric tons per hectare)				Production (Million metric tons)				Change in Production			
	Prel. 2006/07	2008/09 2007/08	2008/09 Proj. Jun	2008/09 Proj. Jul	Prel. 2006/07	2008/09 2007/08	2008/09 Proj. Jun	2008/09 Proj. Jul	Prel. 2006/07	2008/09 2007/08	2008/09 Proj. Jun	2008/09 Proj. Jul	From last month MMT	Percent	From last year MMT	Percent
<b>World</b>	23.70	21.92	23.80	24.10	1.26	1.24	1.32	1.32	29.81	27.18	31.48	31.79	0.30	0.96	4.60	16.94
<b>United States</b>	0.72	0.81	0.83	0.84	1.36	1.61	1.52	1.52	0.97	1.31	1.25	1.27	0.01	0.96	-0.05	-3.44
<b>Total Foreign</b>	22.99	21.11	22.98	23.26	1.25	1.23	1.32	1.31	28.84	25.87	30.23	30.52	0.29	0.96	4.65	17.97
<b>Former Soviet Union</b>																
Russian Federation	5.90	5.00	5.50	5.60	1.14	1.13	1.18	1.14	6.75	5.65	6.50	6.40	-0.10	-1.54	0.75	13.27
Ukraine	3.90	3.40	3.80	4.00	1.36	1.24	1.32	1.30	5.30	4.20	5.00	5.20	0.20	4.00	1.00	23.81
Moldova, Republic of	0.25	0.24	0.24	0.23	1.52	0.67	0.67	1.56	0.38	0.16	0.16	0.35	0.19	118.75	0.19	118.75
Kazakhstan, Republic	0.43	0.35	0.43	0.43	0.63	0.64	0.62	0.62	0.27	0.23	0.27	0.27	0.00	0.00	0.04	17.78
<b>South America</b>																
Argentina	2.40	2.65	2.70	2.70	1.46	1.75	1.77	1.77	3.50	4.63	4.77	4.77	0.00	0.00	0.14	3.07
Uruguay	0.04	0.05	0.05	0.05	1.02	2.00	2.00	2.00	0.04	0.09	0.11	0.11	0.00	0.00	0.02	20.00
Bolivia	0.16	0.14	0.14	0.14	1.06	0.93	0.93	0.93	0.17	0.13	0.13	0.13	0.00	0.00	0.00	0.00
<b>China, Peoples</b>	0.85	0.80	0.85	0.85	1.76	1.56	1.76	1.76	1.50	1.25	1.50	1.50	0.00	0.00	0.25	20.00
<b>EU-27</b>																
France	0.64	0.52	0.60	0.60	2.16	2.56	2.25	2.25	1.39	1.32	1.35	1.35	0.00	0.00	0.03	2.27
Hungary	0.54	0.51	0.55	0.55	2.20	2.04	2.15	2.15	1.18	1.04	1.18	1.18	0.00	0.00	0.14	13.14
Spain	0.63	0.60	0.70	0.70	0.96	1.16	1.14	1.14	0.61	0.70	0.80	0.80	0.00	0.00	0.10	14.29
Italy	0.15	0.13	0.10	0.10	2.12	2.21	2.25	2.25	0.31	0.28	0.23	0.23	0.00	0.00	-0.05	-19.35
Slovakia	0.11	0.07	0.08	0.08	2.12	2.05	2.11	2.11	0.23	0.13	0.18	0.18	0.00	0.00	0.04	33.08
<b>South Asia</b>																
India	2.15	1.90	2.20	2.20	0.60	0.64	0.64	0.64	1.28	1.22	1.40	1.40	0.00	0.00	0.18	15.13
Pakistan	0.41	0.38	0.45	0.45	1.28	1.52	1.52	1.52	0.52	0.58	0.69	0.69	0.00	0.00	0.10	17.50
<b>Turkey</b>	0.48	0.47	0.50	0.50	1.77	1.49	1.70	1.70	0.85	0.70	0.85	0.85	0.00	0.00	0.15	21.43
<b>South Africa,</b>	0.32	0.57	0.60	0.60	0.98	1.49	1.40	1.40	0.31	0.84	0.84	0.84	0.00	0.00	0.00	0.00
<b>Burma, Union of</b>	0.97	0.97	0.97	0.97	0.36	0.36	0.36	0.36	0.35	0.35	0.35	0.35	0.00	0.00	0.00	0.00
<b>Serbia</b>	0.21	0.13	0.19	0.19	1.90	2.00	2.11	2.11	0.40	0.26	0.40	0.40	0.00	0.00	0.14	53.85
<b>Canada</b>	0.08	0.08	0.06	0.06	2.00	1.58	1.59	1.59	0.15	0.12	0.10	0.10	0.00	0.00	-0.03	-20.49
<b>Australia</b>	0.02	0.05	0.05	0.05	1.06	1.54	1.11	1.11	0.02	0.07	0.05	0.05	0.00	0.00	-0.02	-32.43
<b>Others</b>	2.38	2.12	2.22	2.22	1.41	0.90	1.53	1.53	3.34	1.92	3.39	3.39	0.00	0.00	1.48	76.98

World and Selected Countries and Regions

7/11/2008 8:47:39 AM

**Table 15 Rapeseed Area, Yield, and Production**  
**1000 Metric Tons**

Country / Region	Area (Million hectares)				Yield (Metric tons per hectare)				Production (Million metric tons)				Change in Production			
	2006/07	Prel. 2007/08	2008/09 Proj. Jun	2008/09 Proj. Jul	2006/07	Prel. 2007/08	2008/09 Proj. Jun	2008/09 Proj. Jul	2006/07	Prel. 2007/08	2008/09 Proj. Jun	2008/09 Proj. Jul	From last month MMT	Percent	From last year MMT	Percent
<b>World</b>	26.54	27.86	29.03	29.50	1.70	1.70	1.76	1.76	45.16	47.30	51.22	51.97	0.75	1.47	4.68	9.89
<b>United States</b>	0.41	0.47	0.40	0.40	1.53	1.40	1.57	1.57	0.63	0.66	0.62	0.62	0.00	0.32	-0.04	-5.76
<b>Total Foreign</b>	26.12	27.39	28.64	29.11	1.70	1.70	1.77	1.76	44.53	46.64	50.60	51.35	0.75	1.48	4.71	10.11
<b>EU-27</b>																
Germany	1.43	1.55	1.43	1.43	3.73	3.44	3.72	3.72	5.34	5.32	5.30	5.30	0.00	0.00	-0.02	-0.39
France	1.41	1.62	1.48	1.48	2.93	2.84	3.18	3.18	4.12	4.60	4.70	4.70	0.00	0.00	0.10	2.17
United Kingdom	0.58	0.68	0.65	0.65	3.29	3.10	3.31	3.31	1.89	2.11	2.15	2.15	0.00	0.00	0.04	1.99
Poland	0.62	0.80	0.75	0.75	2.65	2.67	2.93	2.93	1.65	2.13	2.20	2.20	0.00	0.00	0.08	3.53
Czech Republic	0.29	0.34	0.34	0.34	3.01	3.06	2.91	2.91	0.88	1.03	0.99	0.99	0.00	0.00	-0.04	-3.98
Denmark	0.13	0.18	0.18	0.18	3.48	3.31	3.39	3.39	0.44	0.59	0.60	0.60	0.00	0.00	0.01	2.39
Hungary	0.14	0.22	0.25	0.25	2.43	2.25	2.28	2.28	0.34	0.49	0.57	0.57	0.00	0.00	0.08	15.38
Romania	0.10	0.34	0.39	0.39	1.63	1.04	1.69	1.69	0.17	0.35	0.65	0.65	0.00	0.00	0.30	84.66
Slovakia	0.12	0.15	0.16	0.16	2.11	2.08	2.16	2.16	0.26	0.32	0.35	0.35	0.00	0.00	0.03	8.10
Sweden	0.09	0.09	0.10	0.10	2.45	2.53	2.53	2.53	0.22	0.22	0.24	0.24	0.00	0.00	0.02	7.62
Lithuania	0.15	0.17	0.20	0.20	1.13	1.90	1.75	1.75	0.17	0.33	0.35	0.35	0.00	0.00	0.02	6.06
Latvia	0.08	0.10	0.10	0.10	1.45	2.14	2.20	2.20	0.12	0.21	0.22	0.22	0.00	0.00	0.01	3.77
Austria	0.04	0.05	0.04	0.04	3.26	3.00	2.84	2.84	0.14	0.14	0.13	0.13	0.00	0.00	-0.02	-13.19
Finland	0.11	0.09	0.10	0.10	1.38	1.27	1.26	1.26	0.15	0.11	0.12	0.12	0.00	0.00	0.01	5.26
Estonia	0.06	0.07	0.08	0.08	1.35	1.49	1.50	1.50	0.09	0.11	0.12	0.12	0.00	0.00	0.01	10.09
<b>China, Peoples</b>	6.00	5.70	6.00	6.00	1.83	1.82	1.83	1.83	10.97	10.38	11.00	11.00	0.00	0.00	0.63	6.02
<b>South Asia</b>																
India	6.64	5.70	6.20	6.20	0.87	0.96	0.94	0.94	5.80	5.45	5.80	5.80	0.00	0.00	0.35	6.42
Pakistan	0.25	0.26	0.27	0.27	1.30	0.75	0.83	0.83	0.32	0.19	0.23	0.23	0.00	0.00	0.04	18.42
Bangladesh	0.31	0.30	0.30	0.30	0.76	0.71	0.73	0.73	0.24	0.21	0.22	0.22	0.00	0.00	0.01	4.76
<b>Canada</b>	5.24	5.91	5.93	6.30	1.72	1.48	1.59	1.56	9.00	8.75	9.45	9.80	0.35	3.70	1.05	12.00
<b>Australia</b>	1.05	1.06	1.10	1.20	0.54	1.00	1.09	1.33	0.57	1.07	1.20	1.60	0.40	33.33	0.54	50.23
<b>Former Soviet Union</b>																
Ukraine	0.39	0.90	1.40	1.40	1.54	1.22	1.71	1.71	0.60	1.10	2.40	2.40	0.00	0.00	1.30	118.18
Russian Federation	0.45	0.54	0.58	0.58	1.16	1.18	1.22	1.22	0.52	0.63	0.70	0.70	0.00	0.00	0.07	10.76
Belarus	0.11	0.15	0.15	0.15	1.07	1.20	1.23	1.23	0.12	0.18	0.19	0.19	0.00	0.00	0.01	2.78
<b>Paraguay</b>	0.10	0.10	0.10	0.10	1.50	1.50	1.80	1.80	0.15	0.15	0.18	0.18	0.00	0.00	0.03	20.00
<b>Others</b>	0.23	0.34	0.38	0.38	1.19	1.36	1.48	1.48	0.27	0.47	0.56	0.56	0.00	0.00	0.09	20.17

World and Selected Countries and Regions

7/11/2008 8:47:40 AM

**Table 16 Copra, Palm Kernel, and Palm Oil Production**  
**1000 Metric Tons**

Country / Region	Production (Million metric tons)				Change in Production			
	2006/07	Prel. 2007/08	2008/09 Proj.		From last month		From last year	
			Jun	Jul	MMT	Percent	MMT	Percent
<b>Oilseed, Copra</b>								
Philippines	2.20	2.50	2.60	2.60	0.00	0.00	0.10	0.04
Indonesia	1.44	1.50	1.60	1.60	0.00	0.00	0.10	0.07
India	0.62	0.70	0.74	0.74	0.00	0.00	0.04	0.06
Vietnam	0.24	0.24	0.24	0.24	0.00	0.00	0.00	0.00
Mexico	0.23	0.23	0.23	0.23	0.00	0.00	0.00	0.00
Papua New Guinea	0.11	0.11	0.11	0.11	0.00	0.00	0.00	0.00
Thailand	0.07	0.07	0.07	0.07	0.00	0.00	0.00	0.00
Sri Lanka	0.06	0.07	0.07	0.07	0.00	0.00	0.00	0.00
Mozambique	0.05	0.05	0.05	0.05	0.00	0.00	0.00	0.00
Cote d'Ivoire	0.05	0.05	0.05	0.05	0.00	0.00	0.00	0.00
World	5.26	5.70	5.94	5.94	0.00	0.00	0.24	0.04
<b>Oilseed, Palm Kernel</b>								
Indonesia	4.45	4.79	5.35	5.35	0.00	0.00	0.56	0.12
Malaysia	3.94	4.47	4.47	4.47	0.00	0.00	0.00	0.00
Nigeria	0.67	0.67	0.67	0.67	0.00	0.00	0.00	0.00
Thailand	0.23	0.21	0.28	0.28	0.00	0.00	0.07	0.33
Colombia	0.17	0.17	0.17	0.17	0.00	0.00	0.00	0.00
Papua New Guinea	0.10	0.11	0.12	0.12	0.00	0.00	0.01	0.09
Cote d'Ivoire	0.08	0.08	0.08	0.08	0.00	0.00	0.00	0.00
Cameroon	0.07	0.07	0.07	0.07	0.00	0.00	0.00	0.00
Ecuador	0.06	0.06	0.06	0.06	0.00	0.00	0.00	0.00
Congo, Democratic Rep of	0.06	0.06	0.06	0.06	0.00	0.00	0.00	0.00
World	10.19	11.05	11.69	11.69	0.00	0.00	0.64	0.06
<b>Oil, Palm</b>								
Indonesia	16.60	18.30	19.70	19.70	0.00	0.00	1.40	0.08
Malaysia	15.29	17.40	17.40	17.40	0.00	0.00	0.00	0.00
Thailand	1.17	1.05	1.40	1.40	0.00	0.00	0.35	0.33
Colombia	0.77	0.83	0.83	0.83	0.00	0.00	0.00	0.00
Nigeria	0.81	0.82	0.82	0.82	0.00	0.00	0.00	0.00
Papua New Guinea	0.38	0.40	0.43	0.43	0.00	0.00	0.02	0.05
Ecuador	0.34	0.34	0.34	0.34	0.00	0.00	0.00	0.00
Cote d'Ivoire	0.32	0.32	0.32	0.32	0.00	0.00	0.00	0.00
Costa Rica	0.29	0.29	0.29	0.29	0.00	0.00	0.00	0.00
Congo, Democratic Rep of	0.18	0.18	0.18	0.18	0.00	0.00	0.00	0.00
World	37.34	41.12	42.90	42.90	0.00	0.00	1.78	0.04

World and Selected Countries and Regions

7/11/2008 8:47:39 AM



**Table 17 Cotton Area, Yield, and Production**  
**1000 480 lb. Bales**

Country / Region	Area (Million hectares)				Yield (Kilograms per hectare)				Production (Million 480 lb. bales)				Change in Production			
	Prel. 2006/07	2008/09 2007/08	2008/09 Proj. Jun	2008/09 Proj. Jul	Prel. 2006/07	2008/09 2007/08	2008/09 Proj. Jun	2008/09 Proj. Jul	Prel. 2006/07	2008/09 2007/08	2008/09 Proj. Jun	2008/09 Proj. Jul	From last month MBales	Percent	From last year MBales	Percent
<b>World</b>	34.690	33.263	32.494	32.068	766.000	785.000	780.000	780.000	121.988	119.913	116.431	114.942	-1.489	-1.279	-4.971	-4.146
<b>United States</b>	5.152	4.245	3.395	3.278	912.000	985.000	930.000	930.000	21.588	19.207	14.500	14.000	-0.500	-3.448	-5.207	-27.110
<b>Total Foreign</b>	29.538	29.018	29.099	28.790	740.000	756.000	763.000	763.000	100.400	100.706	101.931	100.942	-0.989	-0.970	0.236	0.234
<b>China, Peoples</b>	6.000	6.200	6.000	6.000	1,288.0	1,257.0	1,288.0	1,288.0	35.500	35.800	35.500	35.500	0.000	0.000	-0.300	-0.838
<b>South Asia</b>																
India	9.166	9.530	9.650	9.350	518.000	578.000	598.000	594.000	21.800	25.300	26.500	25.500	-1.000	-3.774	0.200	0.791
Pakistan	3.250	3.000	3.050	3.050	663.000	646.000	671.000	671.000	9.900	8.900	9.400	9.400	0.000	0.000	0.500	5.618
<b>Former Soviet Union</b>																
Uzbekistan, Republic	1.430	1.450	1.420	1.420	815.000	826.000	782.000	782.000	5.350	5.500	5.100	5.100	0.000	0.000	-0.400	-7.273
Turkmenistan	0.600	0.600	0.600	0.600	435.000	472.000	472.000	472.000	1.200	1.300	1.300	1.300	0.000	0.000	0.000	0.000
Tajikistan, Republic of	0.255	0.250	0.240	0.240	551.000	523.000	499.000	499.000	0.645	0.600	0.550	0.550	0.000	0.000	-0.050	-8.333
Kazakhstan, Republic	0.195	0.200	0.160	0.160	698.000	680.000	633.000	633.000	0.625	0.625	0.465	0.465	0.000	0.000	-0.160	-25.600
<b>Sub-Saharan Africa</b>																
Burkina	0.700	0.400	0.520	0.520	404.000	367.000	429.000	429.000	1.300	0.675	1.025	1.025	0.000	0.000	0.350	51.852
Mali	0.460	0.284	0.350	0.350	375.000	345.000	404.000	404.000	0.792	0.450	0.650	0.650	0.000	0.000	0.200	44.444
Zimbabwe	0.350	0.400	0.400	0.400	311.000	299.000	313.000	313.000	0.500	0.550	0.575	0.575	0.000	0.000	0.025	4.545
Benin	0.231	0.234	0.300	0.300	448.000	465.000	472.000	472.000	0.475	0.500	0.650	0.650	0.000	0.000	0.150	30.000
Cote d'Ivoire	0.214	0.200	0.225	0.225	317.000	245.000	339.000	339.000	0.312	0.225	0.350	0.350	0.000	0.000	0.125	55.556
Cameroon	0.200	0.140	0.160	0.160	397.000	350.000	408.000	408.000	0.365	0.225	0.300	0.300	0.000	0.000	0.075	33.333
Nigeria	0.380	0.395	0.395	0.395	229.000	248.000	248.000	248.000	0.400	0.450	0.450	0.450	0.000	0.000	0.000	0.000
Sudan	0.160	0.060	0.160	0.160	306.000	399.000	408.000	408.000	0.225	0.110	0.300	0.300	0.000	0.000	0.190	172.727
<b>South America</b>																
Brazil	1.094	1.090	0.980	0.980	1,393.0	1,428.0	1,422.0	1,422.0	7.000	7.150	6.400	6.400	0.000	0.000	-0.750	-10.490
Argentina	0.400	0.330	0.360	0.380	435.000	462.000	438.000	458.000	0.800	0.700	0.725	0.800	0.075	10.345	0.100	14.286
Paraguay	0.125	0.060	0.090	0.090	279.000	417.000	327.000	327.000	0.160	0.115	0.135	0.135	0.000	0.000	0.020	17.391
<b>Middle East</b>																
Turkey	0.630	0.520	0.400	0.400	1,313.0	1,298.0	1,415.0	1,415.0	3.800	3.100	2.600	2.600	0.000	0.000	-0.500	-16.129
Syria	0.214	0.200	0.180	0.180	1,038.0	1,252.0	1,210.0	1,210.0	1.020	1.150	1.000	1.000	0.000	0.000	-0.150	-13.043
Iran	0.115	0.120	0.120	0.120	757.000	726.000	726.000	726.000	0.400	0.400	0.400	0.400	0.000	0.000	0.000	0.000
<b>Australia</b>	0.145	0.075	0.175	0.175	2,027.0	1,742.0	1,866.0	1,866.0	1.350	0.600	1.500	1.500	0.000	0.000	0.900	150.000
<b>EU-27</b>																
Greece	0.330	0.315	0.250	0.250	924.000	916.000	958.000	958.000	1.400	1.325	1.100	1.100	0.000	0.000	-0.225	-16.981
Spain	0.052	0.054	0.055	0.055	892.000	746.000	633.000	633.000	0.213	0.185	0.160	0.160	0.000	0.000	-0.025	-13.514
<b>Egypt</b>	0.246	0.250	0.135	0.135	863.000	914.000	1,008.0	1,008.0	0.975	1.050	0.625	0.625	0.000	0.000	-0.425	-40.476
<b>Mexico</b>	0.115	0.110	0.115	0.115	1,231.0	1,227.0	1,287.0	1,287.0	0.650	0.620	0.680	0.680	0.000	0.000	0.060	9.677
<b>Others</b>	2.481	2.551	2.609	2.580	285.000	265.000	291.000	289.000	3.243	3.101	3.491	3.427	-0.064	-1.833	0.326	10.513

World and Selected Countries and Regions

7/11/2008 8:47:42 AM

**TABLE 18**

The table below presents a 27-year record of the differences between the July projection and the final estimate. Using world wheat production as an example, changes between the July projection and the final estimate have averaged 13.3 million tons (2.4 percent) and ranged from -34.6 to 23.7 million tons. The July projection has been below the final 15 times and above the final 12 times.

**RELIABILITY OF PRODUCTION PROJECTIONS**

COMMODITY AND REGION	PROJECTION AND FINAL ESTIMATES, 1981/82 - 2007/08 1/					
	Difference		Lowest	Highest	Below	Above
	Average	Average	Difference		Final	Final
	Percent	---Million metric tons---			Number of years 2/	
<b>WHEAT</b>						
World	2.4	13.3	-34.6	23.7	15	12
U.S.	2.8	1.7	-6.2	5.4	11	16
Foreign	2.7	12.8	-32.0	21.1	16	11
<b>COARSE GRAINS 3/</b>						
World	2.4	20.4	-68.4	53.6	14	13
U.S.	6.8	15.1	-32.6	57.7	12	15
Foreign	2.1	12.4	-37.9	28.2	13	14
<b>RICE (Milled)</b>						
World	2.0	7.0	-24.0	14.2	18	9
U.S.	4.0	0.2	-0.5	0.4	15	10
Foreign	2.0	7.0	-24.3	14.3	18	9
<b>SOYBEANS</b>						
World	3.1	7.1	-15.2	8.3	1	3
U.S.	4.8	4.0	-5.5	1.1	3	1
Foreign	5.9	8.2	-10.4	13.7	1	3
	---Million 480-lb. bales---					
<b>COTTON</b>						
World	4.1	3.7	-14.9	10.3	18	9
U.S.	9.1	1.5	-5.2	3.6	18	9
Foreign	3.9	2.9	-12.1	10.5	15	11
<b>UNITED STATES</b>	-----Million bushels-----					
<b>CORN</b>	7.4	542	-1172	2034	15	12
<b>SORGHUM</b>	14.0	80	-213	176	14	13
<b>BARLEY</b>	6.8	25	-87	62	8	18
<b>OATS</b>	10.6	26	-39	144	4	22

1/ The final estimate for 1981/82-2006/07 is defined as the first November estimate following the marketing year.

2/ May not total 25 if projection was the same as the final.

3/ Includes corn, sorghum, barley, oats, rye, millet, and mixed grain.

July 2008

Office of Global Analysis, FAS, USDA