



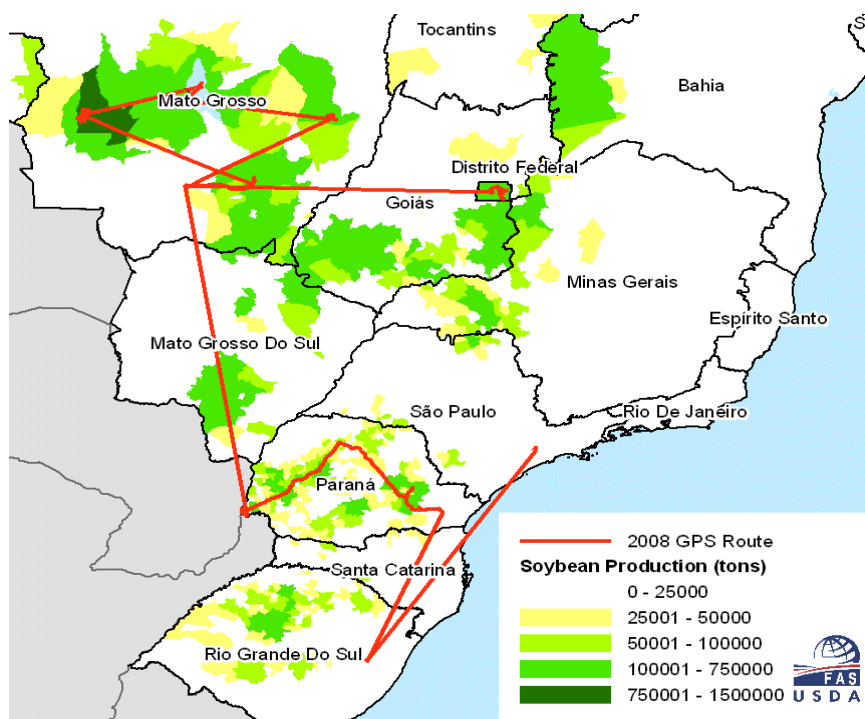
United States  
Department of  
Agriculture

Foreign  
Agricultural  
Service

Circular Series  
WAP 03-08  
March 2008

# World Agricultural Production

## Brazilian Soybeans: Second Consecutive Year of Record Production



Brazil Soybean Crop Production Regions, FAS Crop Assessment Travel from February 14 - March 5, 2008

Brazil soybean production for 2007/08 is forecast at a record 61.0 million tons, up 0.8 percent from February and up 3.4 percent from last year's record. Harvested area for 2007/08 is forecast at 21.3 million hectares, down 1 percent from last month but up 3 percent from last year.

Analysts from the USDA Foreign Agricultural Service conducted crop-assessment travel in the key soybean producing states of Mato Grosso, Parana, and Rio Grande do Sul from February 14 through March 5. Soybean yields are reportedly higher than last year in Mato Grosso and Parana, where harvest is in progress. Although the crop was planted two to three weeks late, and heavy rains during January and February delayed the launch of the harvest campaign, favorable weather is enabling field activity to proceed at a rapid pace. Yields in Rio Grande do Sol, where harvest has not yet begun, are expected to be lower than last year due to dryness

Approved by the World Agricultural Outlook Board

during the end of February. The amount of rainfall received during the next two weeks will be critical in determining final yields in Rio Grande do Sul. Total Brazil soybean yield is estimated at 2.86 tons per hectare, slightly above last year's record. *(For more information, contact Curt Reynolds at 202-690-0134.)*

### **Brazil: Record Corn Production**

Brazil corn production for 2007/08 is forecast at 53.0 million tons, up 3.0 million from last month and up 2.0 million from last year. Harvested area is estimated at 14.5 million hectares, up 0.5 million or 4 percent from both last month and last year. High corn prices encouraged farmers to plant winter corn after early-variety soybeans were harvested in January and February. Winter corn accounts for approximately 30 percent of the total production, with Mato Grosso and Parana each producing approximately one-third of the second (winter) crop. Winter corn planting follows the early soybean harvest and was nearly complete by early March.

Conditions for summer corn, which accounts for nearly 70 percent of the total output, are reported to be better than average due to ideal weather since planting. Overall yield (including both summer and winter) is forecast at 3.65 tons per hectare, up 2 percent from last month and above last year's record yield. *(For more information, contact Curt Reynolds at 202-690-0134.)*

### **India Rice: Generous Monsoon Rains Boost Estimated Production**

The USDA forecasts India rice production for 2007/08 at a record 94.0 million tons, up 2.0 million or 2 percent from last month and up 0.65 million or 1 percent from last year. Area is estimated at 44.0 million hectares, 1.5 million above the five-year average. The government of India's preliminary estimate placed the 2007/08 *kharif* (fall and early winter harvested) crop of rice production at 81.5 million tons, about one million tons higher than the 2006/07 *kharif* output. Production of the mostly-irrigated *rabi* (spring-harvested) rice is forecast to reach 12.5 million tons, boosting total 2007/08 rice production to an estimated 94.0 million. Often in years of above-average monsoon rainfall, rice yield in India sets a new record. Yield for 2007/08 is forecast at a record 3.21 tons per hectare. *(For more information, contact Jim Crutchfield at 202-690-0135.)*

### **India Corn: Production Forecast at Record Level**

The USDA forecasts India corn production for 2007/08 at a record 16.8 million tons, up 0.5 million or 3 percent from last month and up 1.7 million or 11 percent from last year. Area is estimated at 8.3 million hectares, down 0.3 million or 2 percent from last month. The higher estimated production is attributed to a forecast record yield following favorable growing conditions in major growing states such as Andhra Pradesh, Karnataka, Rajasthan and Madhya Pradesh, and increasing use of hybrid seeds. *(For more information, contact Jim Crutchfield at 202-690-0135.)*

## **Australia Sorghum Benefits from Abundant Rain**

The USDA forecasts Australia sorghum production for 2007/08 at a record 2.5 million tons, up 0.3 million or 14 percent from last month and up 1.1 million or 83 percent from last year. Area is estimated at 0.8 million hectares, one of the largest areas on record. In the main sorghum growing areas of northern New South Wales and southern-central Queensland, summer rainfall has been above average which, in conjunction with high grain prices, generate great enthusiasm for planting. The abundant rainfall has been extremely beneficial for early sown grain sorghum and allowed for some late grain sorghum to be sown. Sorghum production was decreased dramatically in the previous two seasons (2005/06 and 2006/07) because of drought. This season a La Nina weather pattern has brought above-normal rainfall to the eastern growing areas of Australia, largely benefiting rain-fed crops including sorghum. This season's forecast production of 2.5 million tons is based on higher area and yield. Average sorghum yield for the past five years is 2.45 tons per hectare compared to a forecast of 3.1 tons per hectare this season. *(For more information, contact Jim Crutchfield at 202-690-0135.)*

## **Chinese Government Announces Cotton Area and Production Data for 2007/08**

The release of official government estimates led to a revision of China's 2007/08 cotton production estimate this month. Production is estimated at 35.0 million bales (7.62 million tons), down 0.5 million or 1 percent from last month and last year. The estimated area of 6.1 million hectares is unchanged from last month but up 0.1 million from last year. The 2007/08 estimated yield of 1249 kilograms per hectare is down 3 percent from last year's record yield but still the second highest on record.

On February 28, the national Bureau of Statistics (NBS) published its first official area and production estimates for 2007/08. Cotton area was estimated at 5.59 million hectares, while production was estimated at 7.6 million tons (34.9 million bales). The resultant yield of 1360 kilograms per hectare is the highest on record. The latest report by the National Development and Reform Commission (NDRC) matched the NBS production estimate for 2007/08. Other analysts and trade sources continue to estimate the 2007/08 crop at 32.2 to 35.8 million bales.

In an unprecedented move, NBS has revised its published cotton area and production statistics for 2006/07. Cotton area was raised from 5.4 to 5.5 million hectares, while production was raised from 6.75 to 7.5 million tons (34.4 million bales). The added production (750,000 tons, 3.4 million bales) helps to fill the gap between reported output and apparent consumption in 2007. *(For more information, contact Paulette Sandene at 202-690-0133.)*

This report uses information from the Foreign Agricultural Service's (FAS) global network of agricultural attachés and counselors, official statistics of foreign governments and other foreign source materials, and the analysis of economic data and satellite imagery. Estimates of foreign area, yield, and production are from the International Production Assessment Division, FAS, and are reviewed by USDA's Inter-Agency Commodity Estimates Committee. Estimates of U.S. area, yield, and production are from USDA's National Agricultural Statistics Service. Numbers within the report may not add to totals because of rounding. This report reflects official USDA estimates released in the World Agricultural Supply and Demand Estimates (WASDE-456), March 11, 2008.

**Printed copies are available from the National Technical Information Service. Download an order form at [http://www.ntis.gov/products/specialty/usda/fas\\_a-g.asp](http://www.ntis.gov/products/specialty/usda/fas_a-g.asp), or call NTIS at 1-800-363-2068.**

The FAS International Production Assessment Branch prepared this report. The next issue of World Agricultural Production will be released after 9:30 a.m. Eastern Time, April 9, 2008.

### Conversion Table

#### Metric tons to bushels

Wheat, soybeans	=	MT * 36.7437
Corn, sorghum, rye	=	MT * 39.36825
Barley	=	MT * 45.929625
Oats	=	MT * 68.894438

#### Metric tons to 480-lb bales

Cotton	=	MT * 4.592917
--------	---	---------------

#### Metric tons to hundredweight

Rice	=	MT * 22.04622
------	---	---------------

#### Area & weight

1 hectare	=	2.471044 acres
1 kilogram	=	2.204622 pounds

For further information, contact:  
U.S. Department of Agriculture  
Foreign Agricultural Service  
Office of Global Analysis  
International Production Assessment Division  
Ag Box 1045, Room 6541, South Building  
Washington, DC 20250-1045  
Telephone: (202) 720-0888 Fax: (202) 720-8880

---

#### GENERAL INFORMATION

Division Director (Acting)	Tom St. Clair	202-720-2974 tom.stclair@fas.usda.gov
Deputy Director	Tom St. Clair	202-720-2974 tom.stclair@fas.usda.gov
Remote Sensing Specialist	Brad Doorn	202-690-0131 doorn@fas.usda.gov
USDA Remote Sensing Advisor	Glenn Bethel	202-720-1280 bethel@fas.usda.gov
Program Analyst	Mary Jackson	202-720-0886 jacksonma@fas.usda.gov
Agricultural Economist	Paul Provance	202-720-0873 paul.provance@fas.usda.gov

#### COUNTRY- AND REGION-SPECIFIC INFORMATION

South America	Denise McWilliams	202-359-8286 denise.mcwilliams@fas.usda.gov
Europe and North Africa	Bryan Purcell	202-690-0138 bryan.purcell@usda.gov
FSU-12, Argentina	Mark Lindeman	202-690-0143 lindeman@fas.usda.gov
Canada, Mexico, Central America, Caribbean	Arnella Trent	202-720-0881 arnella.trent@fas.usda.gov
China, East Asia	Paulette Sandene	202-690-0133 sandene@fas.usda.gov
Other South America		
South Asia, Indonesia, Australia, & New Zealand	Jim Crutchfield	202-690-0135 crutchfield@fas.usda.gov
Sub-Saharan Africa, Brazil	Curt Reynolds	202-690-0134 reynoldsc@fas.usda.gov
Middle East and South East Asia	Michael Shean	202-720-7366 shean@fas.usda.gov
Eastern United States	William Baker	202-690-0136 william.baker@fas.usda.gov
Western United States	Vacant	

**Table 01 World Crop Production Summary**  
1000 Metric Tons

Commodity	World -	Total Foreign	North America			EU-27 -	Former Soviet		Asia (WAP)					South America		Selected Other			All Others	
			United States	Canada -	Mexico -		Russia -	Ukraine -	China -	India -	Indonesia	Pakistan	Thailand	Argentina	Brazil -	Australia	South Africa	Turkey -		
---Million metric tons---																				
<b>Wheat</b>																				
2005/06	621.5	564.2	57.3	25.7	3.0	132.4	47.7	18.7	97.5	68.6	nr	21.6	nr	14.5	4.9	25.2	1.9	18.5	84.0	
2006/07 prel.	593.2	543.9	49.3	25.3	3.2	124.8	44.9	14.0	104.5	69.4	nr	21.7	nr	15.2	2.2	10.6	2.1	17.5	88.5	
2007/08 proj.																				
Feb	603.6	547.3	56.2	20.1	3.4	119.5	49.4	13.9	106.0	74.9	nr	23.0	nr	15.5	3.4	13.0	1.8	15.5	88.0	
Mar	605.0	548.7	56.2	20.1	3.4	119.6	49.4	13.9	106.0	75.8	nr	23.0	nr	15.5	3.8	13.1	1.8	15.5	87.8	
<b>Coarse Grains</b>																				
2005/06	977.3	678.6	298.8	25.0	25.8	146.7	27.6	18.1	147.7	34.0	6.5	1.8	4.1	19.2	44.2	13.5	7.3	11.9	145.0	
2006/07 prel.	979.7	699.5	280.1	23.1	28.7	138.3	30.2	19.2	153.5	32.5	6.7	2.0	3.9	27.5	53.2	6.6	7.8	10.9	155.4	
2007/08 proj.																				
Feb	1,051.9	700.8	351.1	27.8	29.8	136.6	29.3	14.6	153.4	35.7	7.0	2.0	3.9	26.7	52.9	9.4	11.5	10.0	150.2	
Mar	1,056.2	705.1	351.1	27.8	29.8	136.6	29.3	14.6	153.6	36.0	7.0	2.0	3.9	26.7	55.9	9.7	11.5	10.0	150.7	
<b>Rice, Milled</b>																				
2005/06	417.6	410.5	7.1	nr	0.2	1.7	0.4	0.1	126.4	91.8	35.0	5.5	18.2	0.8	7.9	0.7	nr	0.4	121.6	
2006/07 prel.	418.2	412.0	6.2	nr	0.2	1.7	0.4	0.1	127.8	93.4	33.3	5.2	18.3	0.7	7.7	0.1	nr	0.4	122.8	
2007/08 proj.																				
Feb	420.6	414.3	6.3	nr	0.2	1.7	0.5	0.1	129.5	92.0	34.0	5.4	18.6	0.8	8.0	0.0	nr	0.4	123.2	
Mar	422.9	416.6	6.3	nr	0.2	1.7	0.5	0.1	129.5	94.0	34.0	5.4	18.6	0.8	8.0	0.0	nr	0.4	123.5	
<b>Total Grains</b>																				
2005/06	2,016.4	1,653.3	363.2	50.7	29.0	280.8	75.7	36.9	371.6	194.5	41.5	29.0	22.3	34.5	56.9	39.4	9.2	30.8	350.6	
2006/07 prel.	1,991.1	1,655.4	335.7	48.4	32.2	264.8	75.5	33.2	385.8	195.2	40.0	28.9	22.1	43.4	63.1	17.3	9.9	28.9	366.6	
2007/08 proj.																				
Feb	2,076.1	1,662.5	413.6	47.9	33.4	257.8	79.2	28.6	388.9	202.6	41.0	30.4	22.5	43.0	64.2	22.4	13.2	25.9	361.5	
Mar	2,084.1	1,670.5	413.6	47.9	33.4	258.0	79.2	28.6	389.1	205.8	41.0	30.4	22.5	43.0	67.7	22.8	13.2	25.9	362.0	
<b>Oilseeds</b>																				
2005/06	391.8	296.3	95.5	12.9	0.7	23.6	7.4	5.6	57.2	30.6	7.7	5.1	0.5	45.0	59.1	2.5	1.1	2.0	35.2	
2006/07 prel.	408.0	311.4	96.6	12.6	0.6	24.4	8.0	6.8	59.1	29.9	7.9	5.3	0.6	53.2	62.0	1.1	0.6	2.2	37.2	
2007/08 proj.																				
Feb	390.1	310.1	80.0	11.6	0.6	24.2	7.0	6.0	55.6	33.5	8.2	4.7	0.6	52.2	63.6	1.2	1.0	1.9	38.2	
Mar	390.1	310.1	80.0	11.6	0.6	24.4	7.0	6.0	54.3	34.2	8.2	4.9	0.6	52.3	64.1	1.4	1.0	1.9	37.6	
<b>Cotton</b>																				
2005/06	117.7	93.8	23.9	nr	0.6	2.5	nr	nr	29.5	19.1	0.0	10.2	0.0	0.6	4.7	2.8	0.1	3.6	20.1	
2006/07 prel.	122.1	100.5	21.6	nr	0.7	1.6	nr	nr	35.5	21.8	0.0	9.9	0.0	0.8	7.0	1.4	0.1	3.9	17.9	
2007/08 proj.																				
Feb	119.2	100.2	19.0	nr	0.7	1.6	nr	nr	35.5	24.5	0.0	8.6	0.0	0.7	7.2	0.6	0.1	3.3	17.4	
Mar	118.9	99.9	19.0	nr	0.7	1.6	nr	nr	35.0	24.5	0.0	9.0	0.0	0.7	7.1	0.6	0.1	3.2	17.4	

1/ Includes wheat, coarse grains, and rice (milled) shown above.

**Table 02 Wheat Area, Yield, and Production**  
**1000 Metric Tons**

Country / Region	Area (Million hectares)				Yield (Metric tons per hectare)				Production (Million metric tons)				Change in Production			
	Prel.		2007/08 Proj.		Prel.		2007/08 Proj.		Prel.		2007/08 Proj.		From last month		From last year	
	2005/06	2006/07	Feb	Mar	2005/06	2006/07	Feb	Mar	2005/06	2006/07	Feb	Mar	MMT	Percent	MMT	Percent
<b>World</b>	218.50	212.34	217.18	217.54	2.84	2.79	2.78	2.78	621.46	593.19	603.59	604.96	1.37	0.23	11.77	1.98
<b>United States</b>	20.28	18.94	20.64	20.64	2.82	2.60	2.72	2.72	57.28	49.32	56.25	56.25	0.00	0.00	6.93	14.05
<b>Total Foreign</b>	198.22	193.39	196.54	196.89	2.85	2.81	2.78	2.79	564.18	543.87	547.35	548.71	1.37	0.25	4.84	0.89
<b>China, Peoples</b>	22.79	22.96	23.10	23.10	4.28	4.55	4.59	4.59	97.45	104.47	106.00	106.00	0.00	0.00	1.53	1.46
<b>South Asia</b>																
India	26.50	26.40	28.00	28.20	2.59	2.63	2.67	2.69	68.64	69.35	74.89	75.81	0.92	1.23	6.46	9.32
Pakistan	8.36	8.36	8.40	8.40	2.59	2.60	2.74	2.74	21.61	21.70	23.00	23.00	0.00	0.00	1.30	5.99
Afghanistan	2.35	2.19	2.20	2.20	1.82	1.46	1.73	1.73	4.27	3.20	3.80	3.80	0.00	0.00	0.60	18.75
<b>Former Soviet Union</b>																
Russian Federation	25.40	23.70	24.50	24.50	1.88	1.89	2.02	2.02	47.70	44.90	49.40	49.40	0.00	0.00	4.50	10.02
Ukraine	6.57	5.50	6.00	6.00	2.85	2.55	2.32	2.32	18.70	14.00	13.90	13.90	0.00	0.00	-0.10	-0.71
Kazakhstan, Republic	11.80	12.40	12.75	12.75	0.93	1.09	1.30	1.30	11.00	13.50	16.60	16.60	0.00	0.00	3.10	22.96
Uzbekistan, Republic	1.45	1.30	1.30	1.30	4.00	4.50	4.62	4.62	5.80	5.85	6.00	6.00	0.00	0.00	0.15	2.56
<b>EU-27</b>																
France	5.29	5.26	5.27	5.27	6.98	6.74	6.25	6.25	36.90	35.47	32.90	32.90	0.00	0.00	-2.57	-7.24
Germany	3.17	3.12	3.00	3.01	7.46	7.20	6.98	6.96	23.69	22.43	20.94	20.93	-0.01	-0.04	-1.50	-6.69
United Kingdom	1.87	1.83	1.82	1.82	7.96	8.04	7.22	7.22	14.86	14.74	13.14	13.14	0.00	0.00	-1.60	-10.82
Poland	2.22	2.18	2.25	2.25	3.95	3.24	3.73	3.73	8.77	7.06	8.40	8.40	0.00	0.00	1.34	18.98
Spain	2.25	1.96	1.83	1.83	1.70	2.85	3.47	3.47	3.82	5.58	6.35	6.35	0.00	0.00	0.77	13.80
Italy	2.03	1.77	2.03	2.03	3.49	3.68	3.52	3.52	7.08	6.51	7.15	7.15	0.00	0.00	0.64	9.80
Denmark	0.68	0.68	0.69	0.69	7.15	6.95	6.57	6.57	4.83	4.76	4.50	4.50	0.00	0.00	-0.26	-5.38
Hungary	1.13	1.08	1.11	1.11	4.51	4.07	3.59	3.59	5.10	4.38	3.99	3.99	0.00	0.00	-0.39	-8.87
Romania	2.10	1.80	1.85	1.85	2.81	2.64	1.57	1.57	5.90	4.75	2.90	2.90	0.00	0.00	-1.85	-38.95
Bulgaria	1.10	0.92	1.00	1.10	3.13	3.45	2.10	2.02	3.44	3.18	2.10	2.21	0.11	5.43	-0.96	-30.31
<b>Canada</b>	9.40	9.68	8.64	8.64	2.74	2.61	2.32	2.32	25.75	25.27	20.05	20.05	0.00	0.00	-5.22	-20.64
<b>Australia</b>	12.46	11.62	12.20	12.30	2.02	0.92	1.07	1.07	25.17	10.64	13.00	13.10	0.10	0.77	2.46	23.11
<b>Middle East</b>																
Turkey	8.60	8.60	8.60	8.60	2.15	2.03	1.80	1.80	18.50	17.50	15.50	15.50	0.00	0.00	-2.00	-11.43
Iran	6.95	6.90	6.90	6.90	2.09	2.14	2.17	2.17	14.50	14.80	15.00	15.00	0.00	0.00	0.20	1.35
Syria	1.70	1.70	1.70	1.70	2.76	2.47	2.35	2.35	4.70	4.20	4.00	4.00	0.00	0.00	-0.20	-4.76
<b>North Africa</b>																
Egypt	1.26	1.29	1.29	1.29	6.50	6.43	6.45	6.45	8.18	8.27	8.32	8.32	0.00	0.00	0.05	0.56
Morocco	2.97	3.11	2.57	2.57	1.03	2.04	0.58	0.58	3.04	6.33	1.50	1.50	0.00	0.00	-4.83	-76.29
<b>Argentina</b>	5.00	5.29	5.60	5.60	2.90	2.88	2.77	2.77	14.50	15.20	15.50	15.50	0.00	0.00	0.30	1.97
<b>Others</b>	22.83	21.81	21.95	21.90	2.64	2.56	2.67	2.68	60.27	55.85	58.52	58.77	0.24	0.41	2.91	5.21

World and Selected Countries and Regions

3/11/2008 10:50:25 AM

**Table 03 Total Coarse Grain Area, Yield, and Production**  
**1000 Metric Tons**

Country / Region	Area (Million hectares)				Yield (Metric tons per hectare)				Production (Million metric tons)				Change in Production			
	2005/06	Prel. 2006/07	2007/08 Feb	Proj. Mar	2005/06	Prel. 2006/07	2007/08 Feb	Proj. Mar	2005/06	Prel. 2006/07	2007/08 Feb	Proj. Mar	From last month MMT	Percent	From last year MMT	Percent
<b>World</b>	300.78	303.73	314.65	314.99	3.25	3.23	3.34	3.35	977.34	979.65	1,051.9	1,056.19	4.29	0.41	76.54	7.81
<b>United States</b>	34.89	32.53	39.92	39.92	8.56	8.61	8.79	8.79	298.76	280.11	351.06	351.06	0.00	0.00	70.95	25.33
<b>Total Foreign</b>	265.89	271.20	274.73	275.06	2.55	2.58	2.55	2.56	678.57	699.54	700.85	705.13	4.29	0.61	5.59	0.80
<b>China, Peoples</b>	29.13	29.83	30.86	30.90	5.07	5.15	4.97	4.97	147.70	153.50	153.40	153.60	0.20	0.13	0.10	0.06
<b>South America</b>																
Brazil	14.14	15.15	15.34	15.84	3.12	3.51	3.45	3.53	44.17	53.17	52.86	55.86	3.00	5.68	2.69	5.06
Argentina	3.47	4.07	4.46	4.46	5.55	6.77	5.98	5.98	19.22	27.54	26.67	26.67	0.00	0.00	-0.87	-3.14
<b>EU-27</b>																
France	3.83	3.72	3.76	3.76	7.08	6.89	7.02	7.02	27.10	25.59	26.41	26.41	0.00	0.00	0.83	3.22
Germany	3.67	3.59	3.58	3.58	6.08	5.87	5.50	5.50	22.29	21.05	19.70	19.66	-0.04	-0.19	-1.39	-6.60
Poland	6.04	6.12	5.98	5.98	2.99	2.39	3.13	3.13	18.07	14.66	18.70	18.70	0.00	0.00	4.05	27.60
Spain	4.15	4.24	4.26	4.28	2.25	3.07	3.92	3.90	9.32	13.00	16.69	16.66	-0.03	-0.15	3.66	28.17
Italy	1.64	1.59	1.55	1.55	7.20	7.12	7.30	7.30	11.84	11.29	11.34	11.34	0.00	0.00	0.05	0.48
Hungary	1.78	1.75	1.67	1.67	6.04	5.76	3.38	3.38	10.73	10.06	5.64	5.64	0.00	0.00	-4.42	-43.90
United Kingdom	1.11	1.11	1.12	1.12	5.96	6.30	6.10	6.10	6.63	6.97	6.85	6.85	0.00	0.00	-0.13	-1.79
Romania	3.65	3.15	2.44	2.44	3.25	3.06	1.78	1.78	11.88	9.64	4.35	4.35	0.00	0.00	-5.29	-54.85
<b>Former Soviet Union</b>																
Russian Federation	16.20	17.10	17.40	17.40	1.70	1.77	1.69	1.69	27.60	30.20	29.33	29.33	0.00	0.00	-0.88	-2.90
Ukraine	7.19	7.82	7.15	7.15	2.52	2.45	2.04	2.04	18.14	19.18	14.59	14.59	0.00	0.00	-4.59	-23.94
Kazakhstan, Republic	1.97	2.17	2.18	2.18	1.03	1.12	1.38	1.38	2.02	2.42	3.02	3.02	0.00	0.00	0.60	24.59
<b>Africa</b>																
Nigeria	17.25	17.95	17.25	17.25	1.43	1.45	1.39	1.39	24.70	26.00	24.00	24.00	0.00	0.00	-2.00	-7.69
South Africa, Republic	2.88	3.78	4.08	4.08	2.54	2.05	2.81	2.81	7.31	7.76	11.48	11.48	0.00	0.00	3.72	47.98
Ethiopia	5.50	5.85	5.75	5.75	1.65	1.89	1.88	1.88	9.09	11.08	10.80	10.80	0.00	0.00	-0.28	-2.48
Egypt	0.93	0.94	0.94	0.94	7.49	7.49	7.49	7.49	6.99	7.00	7.04	7.04	0.00	0.00	0.04	0.57
<b>India</b>	27.86	27.31	28.37	28.27	1.22	1.19	1.26	1.27	34.04	32.54	35.71	36.03	0.32	0.90	3.49	10.73
<b>Southeast Asia</b>																
Indonesia	3.31	3.30	3.40	3.40	1.96	2.03	2.06	2.06	6.50	6.70	7.00	7.00	0.00	0.00	0.30	4.48
Philippines	2.56	2.61	2.65	2.65	2.30	2.39	2.30	2.45	5.88	6.23	6.10	6.50	0.40	6.56	0.27	4.32
Thailand	1.15	1.05	1.05	1.05	3.55	3.70	3.75	3.75	4.10	3.89	3.94	3.94	0.00	0.00	0.05	1.29
<b>Mexico</b>	8.58	9.36	9.51	9.51	3.01	3.07	3.13	3.13	25.83	28.73	29.78	29.78	0.00	0.00	1.05	3.65
<b>Canada</b>	6.24	6.12	7.39	7.39	4.00	3.78	3.77	3.77	24.97	23.15	27.84	27.84	0.00	0.00	4.70	20.29
<b>Australia</b>	6.25	5.83	6.24	6.19	2.17	1.13	1.51	1.57	13.54	6.58	9.41	9.71	0.30	3.19	3.13	47.54
<b>Turkey</b>	4.56	4.43	4.46	4.46	2.62	2.47	2.25	2.25	11.95	10.95	10.05	10.05	0.00	0.00	-0.90	-8.22
<b>Others</b>	80.87	81.32	81.88	81.82	1.57	1.61	1.57	1.57	126.98	130.70	128.17	128.30	0.13	0.10	-2.40	-1.84

World and Selected Countries and Regions

3/11/2008 10:50:37 AM



**Table 04 Corn Area, Yield, and Production**  
**1000 Metric Tons**

Country / Region	Area (Million hectares)				Yield (Metric tons per hectare)				Production (Million metric tons)				Change in Production			
	Prel.		2007/08 Proj.		Prel.		2007/08 Proj.		Prel.		2007/08 Proj.		From last month		From last year	
	2005/06	2006/07	Feb	Mar	2005/06	2006/07	Feb	Mar	2005/06	2006/07	Feb	Mar	MMT	Percent	MMT	Percent
<b>World</b>	145.59	148.11	156.96	157.10	4.78	4.75	4.88	4.90	696.30	704.28	766.23	770.17	3.94	0.51	65.89	9.36
<b>United States</b>	30.40	28.59	35.02	35.02	9.29	9.36	9.48	9.48	282.31	267.60	332.09	332.09	0.00	0.00	64.49	24.10
<b>Total Foreign</b>	115.19	119.52	121.94	122.08	3.59	3.65	3.56	3.59	413.99	436.69	434.14	438.08	3.94	0.91	1.39	0.32
<b>China, Peoples</b>	26.36	26.97	28.00	28.00	5.29	5.39	5.18	5.18	139.37	145.48	145.00	145.00	0.00	0.00	-0.48	-0.33
<b>South America</b>																
Brazil	12.90	14.00	14.00	14.50	3.23	3.64	3.57	3.66	41.70	51.00	50.00	53.00	3.00	6.00	2.00	3.92
Argentina	2.44	2.80	3.10	3.10	6.48	8.04	6.94	6.94	15.80	22.50	21.50	21.50	0.00	0.00	-1.00	-4.44
<b>Mexico</b>	6.64	7.40	7.40	7.40	2.94	2.97	3.04	3.04	19.50	22.00	22.50	22.50	0.00	0.00	0.50	2.27
<b>EU-27</b>																
France	1.61	1.44	1.50	1.50	8.51	8.44	9.53	9.53	13.68	12.15	14.30	14.30	0.00	0.00	2.15	17.70
Italy	1.11	1.06	1.01	1.01	8.98	8.87	9.41	9.41	10.00	9.40	9.50	9.50	0.00	0.00	0.10	1.06
Hungary	1.20	1.22	1.12	1.12	7.25	6.82	3.60	3.60	8.70	8.28	4.03	4.03	0.00	0.00	-4.26	-51.39
Romania	2.95	2.60	1.90	1.90	3.49	3.27	1.89	1.89	10.30	8.50	3.60	3.60	0.00	0.00	-4.90	-57.65
Poland	0.34	0.30	0.32	0.32	5.74	4.16	5.31	5.31	1.95	1.26	1.70	1.70	0.00	0.00	0.44	34.81
<b>India</b>	7.60	7.80	8.60	8.30	1.94	1.94	1.90	2.02	14.71	15.10	16.30	16.80	0.50	3.07	1.70	11.26
<b>Canada</b>	1.09	1.06	1.37	1.37	8.63	8.47	8.50	8.50	9.36	8.99	11.65	11.65	0.00	0.00	2.66	29.59
<b>Indonesia</b>	3.31	3.30	3.40	3.40	1.96	2.03	2.06	2.06	6.50	6.70	7.00	7.00	0.00	0.00	0.30	4.48
<b>Ukraine</b>	1.66	1.70	1.90	1.90	4.31	3.76	3.89	3.89	7.15	6.40	7.40	7.40	0.00	0.00	1.00	15.63
<b>Serbia</b>	0.00	1.17	1.20	1.20	0.00	5.48	3.58	3.58	0.00	6.42	4.30	4.30	0.00	0.00	-2.12	-32.97
<b>Egypt</b>	0.72	0.73	0.73	0.73	8.19	8.19	8.19	8.19	5.93	5.94	5.98	5.98	0.00	0.00	0.04	0.67
<b>Philippines</b>	2.56	2.61	2.65	2.65	2.30	2.39	2.30	2.45	5.88	6.23	6.10	6.50	0.40	6.56	0.27	4.32
<b>Vietnam</b>	1.03	1.15	1.20	1.20	3.70	3.75	3.80	3.80	3.82	4.31	4.56	4.56	0.00	0.00	0.25	5.75
<b>Thailand</b>	1.10	1.00	1.00	1.00	3.64	3.80	3.85	3.85	4.00	3.80	3.85	3.85	0.00	0.00	0.05	1.32
<b>Russian Federation</b>	0.85	1.00	1.30	1.30	3.76	3.60	3.04	3.04	3.20	3.60	3.95	3.95	0.00	0.00	0.35	9.72
<b>Sub-Saharan Africa</b>																
South Africa, Republic	2.03	2.90	3.20	3.20	3.41	2.52	3.44	3.44	6.94	7.30	11.00	11.00	0.00	0.00	3.70	50.68
Nigeria	4.00	4.70	4.00	4.00	1.75	1.66	1.63	1.63	7.00	7.80	6.50	6.50	0.00	0.00	-1.30	-16.67
Ethiopia	2.05	2.18	2.05	2.05	1.95	2.30	2.34	2.34	4.00	5.00	4.80	4.80	0.00	0.00	-0.20	-4.00
Zimbabwe	1.30	1.20	1.30	1.30	0.69	0.50	0.65	0.65	0.90	0.60	0.85	0.85	0.00	0.00	0.25	41.67
<b>Turkey</b>	0.55	0.43	0.45	0.45	6.73	6.59	6.44	6.44	3.70	2.80	2.90	2.90	0.00	0.00	0.10	3.57
<b>Others</b>	29.79	28.82	29.24	29.18	2.35	2.26	2.22	2.22	69.91	65.12	64.88	64.91	0.04	0.06	-0.21	-0.32

World and Selected Countries and Regions

3/11/2008 10:50:26 AM

**Table 05 Barley Area, Yield, and Production**  
**1000 Metric Tons**

Country / Region	Area (Million hectares)				Yield (Metric tons per hectare)				Production (Million metric tons)				Change in Production			
	Prel.		2007/08 Proj.		Prel.		2007/08 Proj.		Prel.		2007/08 Proj.		From last month		From last year	
	2005/06	2006/07	Feb	Mar	2005/06	2006/07	Feb	Mar	2005/06	2006/07	Feb	Mar	MMT	Percent	MMT	Percent
<b>World</b>	55.61	57.09	57.22	57.28	2.46	2.41	2.32	2.33	136.55	137.35	132.83	133.25	0.43	0.32	-4.09	-2.98
<b>United States</b>	1.32	1.19	1.42	1.42	3.49	3.29	3.25	3.25	4.61	3.92	4.61	4.61	0.00	0.00	0.69	17.56
<b>Total Foreign</b>	54.29	55.89	55.80	55.86	2.43	2.39	2.30	2.30	131.94	133.43	128.22	128.64	0.43	0.33	-4.78	-3.58
<b>Russian Federation</b>	9.15	10.00	9.80	9.80	1.73	1.81	1.60	1.60	15.80	18.10	15.65	15.65	0.00	0.00	-2.45	-13.54
<b>EU-27</b>																
Germany	1.95	2.03	1.94	1.93	5.97	5.91	5.42	5.42	11.61	11.97	10.48	10.48	0.00	-0.01	-1.49	-12.43
France	1.60	1.66	1.67	1.67	6.44	6.31	5.68	5.68	10.32	10.49	9.48	9.48	0.00	0.00	-1.01	-9.59
Spain	3.14	3.23	3.20	3.22	1.42	2.58	3.63	3.60	4.46	8.32	11.60	11.60	0.00	0.00	3.28	39.42
United Kingdom	0.94	0.88	0.89	0.89	5.86	5.95	5.70	5.70	5.50	5.24	5.08	5.08	0.00	0.00	-0.16	-3.03
Denmark	0.71	0.67	0.63	0.63	5.39	4.83	4.90	4.90	3.80	3.25	3.09	3.09	0.00	0.00	-0.16	-5.01
Poland	1.11	1.22	1.20	1.20	3.22	2.59	3.33	3.33	3.58	3.16	4.00	4.00	0.00	0.00	0.84	26.54
Czech Republic	0.52	0.53	0.50	0.50	4.21	3.59	3.84	3.84	2.20	1.90	1.92	1.92	0.00	0.00	0.02	1.16
Finland	0.59	0.56	0.57	0.57	3.54	3.48	3.50	3.50	2.10	1.96	1.98	1.98	0.00	0.00	0.02	1.02
Sweden	0.37	0.31	0.33	0.33	4.28	3.63	4.43	4.43	1.59	1.11	1.44	1.44	0.00	0.00	0.33	29.38
Italy	0.32	0.33	0.34	0.34	3.79	3.89	3.53	3.53	1.21	1.27	1.20	1.20	0.00	0.00	-0.07	-5.59
Hungary	0.32	0.29	0.32	0.32	3.79	3.68	3.27	3.27	1.20	1.08	1.04	1.04	0.00	0.00	-0.04	-3.79
Austria	0.19	0.21	0.19	0.19	4.60	4.43	4.26	4.26	0.88	0.91	0.81	0.81	0.00	0.00	-0.10	-11.28
<b>Ukraine</b>	4.35	5.20	4.40	4.40	2.07	2.18	1.36	1.36	9.00	11.35	6.00	6.00	0.00	0.00	-5.35	-47.14
<b>Canada</b>	3.63	3.22	4.00	4.00	3.21	2.97	2.75	2.75	11.68	9.57	11.00	11.00	0.00	0.00	1.43	14.91
<b>Australia</b>	4.41	4.10	4.40	4.35	2.15	1.02	1.32	1.36	9.48	4.18	5.80	5.90	0.10	1.72	1.72	41.28
<b>Turkey</b>	3.60	3.60	3.60	3.60	2.11	2.08	1.81	1.81	7.60	7.50	6.50	6.50	0.00	0.00	-1.00	-13.33
<b>China, Peoples</b>	0.85	0.92	0.86	0.95	4.00	3.90	3.95	3.79	3.40	3.57	3.40	3.60	0.20	5.88	0.04	0.98
<b>Iran</b>	1.66	1.70	1.70	1.70	1.75	1.71	1.76	1.76	2.90	2.90	3.00	3.00	0.00	0.00	0.10	3.45
<b>Morocco</b>	2.18	2.19	1.99	1.99	0.51	1.16	0.27	0.27	1.10	2.54	0.54	0.54	0.00	0.00	-2.00	-78.70
<b>Kazakhstan,</b>	1.60	1.80	1.80	1.80	0.94	1.06	1.39	1.39	1.50	1.90	2.50	2.50	0.00	0.00	0.60	31.58
<b>Ethiopia</b>	1.18	1.33	1.30	1.30	1.51	1.60	1.62	1.62	1.79	2.13	2.10	2.10	0.00	0.00	-0.03	-1.18
<b>Belarus</b>	0.60	0.55	0.65	0.65	3.00	2.45	2.62	2.62	1.80	1.35	1.70	1.70	0.00	0.00	0.35	25.93
<b>India</b>	0.76	0.70	0.77	0.77	1.59	1.74	1.70	1.73	1.20	1.22	1.31	1.33	0.02	1.53	0.11	9.02
<b>Argentina</b>	0.27	0.34	0.35	0.35	3.02	3.76	3.43	3.43	0.80	1.27	1.20	1.20	0.00	0.00	-0.07	-5.14
<b>Mexico</b>	0.31	0.35	0.35	0.35	2.46	2.57	2.57	2.57	0.75	0.90	0.90	0.90	0.00	0.00	0.00	0.00
<b>Iraq</b>	1.14	1.03	1.00	1.00	0.66	0.90	0.80	0.80	0.75	0.92	0.80	0.80	0.00	0.00	-0.12	-13.04
<b>Algeria</b>	0.70	0.70	0.70	0.70	0.57	1.00	1.00	1.00	0.40	0.70	0.70	0.70	0.00	0.00	0.00	0.00
<b>Others</b>	6.15	6.26	6.37	6.36	2.20	2.03	2.04	2.06	13.53	12.69	13.00	13.10	0.11	0.83	0.42	3.30

World and Selected Countries and Regions

3/11/2008 10:50:26 AM

**Table 06 Oats Area, Yield, and Production**  
**1000 Metric Tons**

Country / Region	Area (Million hectares)				Yield (Metric tons per hectare)				Production (Million metric tons)				Change in Production			
	Prel.		2007/08 Proj.		Prel.		2007/08 Proj.		Prel.		2007/08 Proj.		From last month		From last year	
	2005/06	2006/07	Feb	Mar	2005/06	2006/07	Feb	Mar	2005/06	2006/07	Feb	Mar	MMT	Percent	MMT	Percent
<b>World</b>	12.50	12.99	13.28	13.28	1.91	1.78	1.94	1.93	23.86	23.11	25.73	25.58	-0.15	-0.59	2.48	10.71
<b>United States</b>	0.74	0.63	0.61	0.61	2.26	2.14	2.18	2.18	1.67	1.36	1.33	1.33	0.00	0.00	-0.03	-2.13
<b>Total Foreign</b>	11.76	12.36	12.67	12.67	1.89	1.76	1.93	1.91	22.19	21.75	24.40	24.25	-0.15	-0.62	2.50	11.51
<b>Russian Federation</b>	3.35	3.60	3.70	3.70	1.36	1.36	1.46	1.46	4.55	4.90	5.40	5.40	0.00	0.00	0.50	10.20
<b>Canada</b>	1.27	1.54	1.81	1.81	2.58	2.51	2.60	2.60	3.28	3.85	4.70	4.70	0.00	0.00	0.85	22.01
<b>EU-27</b>																
Poland	0.54	0.54	0.56	0.56	2.46	1.92	2.68	2.68	1.32	1.04	1.50	1.50	0.00	0.00	0.47	44.93
Finland	0.35	0.35	0.36	0.36	3.11	2.92	3.50	3.50	1.07	1.03	1.26	1.26	0.00	0.00	0.23	22.45
Spain	0.45	0.50	0.53	0.53	1.18	1.83	2.42	2.41	0.53	0.92	1.27	1.27	0.00	0.00	0.35	38.04
Germany	0.21	0.18	0.18	0.18	4.59	4.51	4.14	4.13	0.96	0.83	0.73	0.72	0.00	-0.28	-0.11	-12.89
Sweden	0.19	0.20	0.21	0.21	3.87	3.18	4.38	4.38	0.75	0.64	0.92	0.92	0.00	0.00	0.28	44.65
United Kingdom	0.09	0.12	0.13	0.13	5.85	6.02	5.62	5.62	0.53	0.73	0.73	0.73	0.00	0.00	0.00	0.27
France	0.11	0.11	0.11	0.11	4.56	4.34	3.81	3.81	0.51	0.46	0.40	0.40	0.00	0.00	-0.06	-13.79
Italy	0.18	0.16	0.16	0.16	2.45	2.45	2.50	2.50	0.43	0.39	0.40	0.40	0.00	0.00	0.01	3.36
Denmark	0.07	0.07	0.06	0.06	4.57	4.06	4.73	4.73	0.32	0.28	0.30	0.30	0.00	0.00	0.01	4.93
Romania	0.22	0.20	0.20	0.20	1.79	1.71	1.25	1.25	0.39	0.35	0.25	0.25	0.00	0.00	-0.10	-28.16
Czech Republic	0.05	0.06	0.06	0.06	2.90	2.67	2.83	2.83	0.15	0.16	0.17	0.17	0.00	0.00	0.02	9.68
Hungary	0.06	0.06	0.06	0.06	2.53	2.46	2.00	2.00	0.16	0.15	0.12	0.12	0.00	0.00	-0.03	-20.00
Austria	0.03	0.04	0.03	0.03	4.30	3.74	3.17	3.17	0.13	0.13	0.10	0.10	0.00	0.00	-0.04	-27.48
Ireland	0.02	0.02	0.02	0.02	7.29	7.35	7.94	7.94	0.12	0.13	0.14	0.14	0.00	0.00	0.01	8.00
Lithuania	0.06	0.06	0.06	0.06	1.90	1.07	1.83	1.83	0.11	0.06	0.11	0.11	0.00	0.00	0.05	74.60
<b>Australia</b>	0.93	0.98	0.90	0.90	1.82	0.75	1.11	0.94	1.69	0.73	1.00	0.85	-0.15	-15.00	0.12	15.96
<b>Ukraine</b>	0.45	0.44	0.40	0.40	1.78	1.59	1.38	1.38	0.80	0.70	0.55	0.55	0.00	0.00	-0.15	-21.43
<b>China, Peoples</b>	0.50	0.50	0.50	0.50	1.20	1.20	1.20	1.20	0.60	0.60	0.60	0.60	0.00	0.00	0.00	0.00
<b>Belarus</b>	0.25	0.25	0.25	0.25	2.40	2.20	2.40	2.40	0.60	0.55	0.60	0.60	0.00	0.00	0.05	9.09
<b>Brazil</b>	0.36	0.35	0.35	0.35	1.45	1.36	1.36	1.36	0.52	0.48	0.48	0.48	0.00	0.00	0.00	0.00
<b>Argentina</b>	0.23	0.25	0.25	0.25	1.52	1.60	1.60	1.60	0.35	0.40	0.40	0.40	0.00	0.00	0.00	0.00
<b>Chile</b>	0.09	0.08	0.08	0.08	4.67	4.75	4.75	4.75	0.42	0.38	0.38	0.38	0.00	0.00	0.00	0.00
<b>Norway</b>	0.09	0.09	0.09	0.09	4.19	4.19	4.19	4.19	0.36	0.36	0.36	0.36	0.00	0.00	0.00	0.00
<b>Turkey</b>	0.16	0.16	0.16	0.16	1.87	1.87	1.87	1.87	0.29	0.29	0.29	0.29	0.00	0.00	0.00	0.00
<b>Kazakhstan,</b>	0.14	0.14	0.16	0.16	1.00	1.00	1.00	1.00	0.14	0.14	0.16	0.16	0.00	0.00	0.02	14.29
<b>Serbia</b>	0.00	0.07	0.07	0.07	0.00	1.85	1.85	1.85	0.00	0.12	0.12	0.12	0.00	0.00	0.00	0.00
<b>Others</b>	1.33	1.26	1.25	1.25	0.83	0.76	0.79	0.79	1.11	0.96	0.98	0.98	0.00	0.00	0.02	2.39

World and Selected Countries and Regions

3/11/2008 10:50:27 AM

**Table 07 Rye Area, Yield, and Production**  
**1000 Metric Tons**

Country / Region	Area (Million hectares)				Yield (Metric tons per hectare)				Production (Million metric tons)				Change in Production			
	Prel.		2007/08 Proj.		Prel.		2007/08 Proj.		Prel.		2007/08 Proj.		From last month		From last year	
	2005/06	2006/07	Feb	Mar	2005/06	2006/07	Feb	Mar	2005/06	2006/07	Feb	Mar	MMT	Percent	MMT	Percent
<b>World</b>	6.77	5.68	6.31	6.31	2.14	2.18	2.26	2.26	14.49	12.38	14.25	14.25	-0.01	-0.04	1.87	15.10
<b>United States</b>	0.11	0.11	0.12	0.12	1.69	1.65	1.72	1.72	0.19	0.18	0.20	0.20	0.00	0.00	0.02	9.84
<b>Total Foreign</b>	6.65	5.57	6.20	6.19	2.15	2.19	2.27	2.27	14.30	12.19	14.05	14.05	-0.01	-0.04	1.85	15.18
<b>EU-27</b>																
Poland	1.42	1.32	1.40	1.40	2.41	1.99	2.21	2.21	3.40	2.62	3.10	3.10	0.00	0.00	0.48	18.23
Germany	0.55	0.54	0.68	0.67	5.09	4.91	4.01	4.02	2.79	2.64	2.71	2.71	0.00	0.07	0.07	2.57
Spain	0.09	0.10	0.12	0.11	1.40	1.61	2.17	2.25	0.13	0.16	0.25	0.25	0.00	0.00	0.09	57.23
Lithuania	0.05	0.05	0.07	0.07	2.12	1.76	2.43	2.43	0.11	0.09	0.17	0.17	0.00	0.00	0.08	88.89
Latvia	0.04	0.04	0.06	0.06	2.23	2.93	2.83	2.83	0.09	0.12	0.17	0.17	0.00	0.00	0.05	45.30
France	0.03	0.03	0.03	0.03	4.74	4.52	4.62	4.62	0.15	0.12	0.12	0.12	0.00	0.00	0.00	-1.64
Denmark	0.03	0.03	0.03	0.03	4.89	4.89	4.60	4.60	0.13	0.13	0.14	0.14	0.00	0.00	0.01	4.55
Czech Republic	0.05	0.02	0.04	0.04	4.19	3.41	4.27	4.27	0.20	0.08	0.18	0.18	0.00	0.00	0.10	133.33
Austria	0.04	0.03	0.05	0.05	3.79	3.48	4.11	4.11	0.16	0.09	0.19	0.19	0.00	0.00	0.09	96.81
Sweden	0.02	0.02	0.03	0.03	5.33	4.92	5.40	5.40	0.11	0.12	0.14	0.14	0.00	0.00	0.02	14.41
Hungary	0.04	0.04	0.04	0.04	2.49	2.44	2.02	2.02	0.11	0.10	0.09	0.09	0.00	0.00	-0.01	-10.53
Slovakia	0.02	0.01	0.02	0.02	2.88	2.46	3.00	3.00	0.07	0.03	0.06	0.06	0.00	0.00	0.03	87.50
Finland	0.01	0.02	0.03	0.03	2.29	2.32	2.83	2.83	0.03	0.05	0.09	0.09	0.00	0.00	0.03	66.67
United Kingdom	0.01	0.01	0.01	0.01	4.90	4.90	5.38	5.38	0.05	0.05	0.04	0.04	0.00	0.00	-0.01	-12.24
Romania	0.02	0.02	0.01	0.01	2.45	1.94	2.00	2.00	0.05	0.03	0.03	0.03	0.00	0.00	-0.01	-21.21
Greece	0.01	0.01	0.01	0.01	1.85	1.79	1.71	1.71	0.02	0.03	0.02	0.02	0.00	0.00	0.00	-4.00
Portugal	0.03	0.02	0.02	0.02	0.74	0.82	0.91	0.91	0.02	0.02	0.02	0.02	0.00	0.00	0.00	11.11
<b>Russian Federation</b>	2.35	1.80	2.10	2.10	1.53	1.67	1.86	1.86	3.60	3.00	3.90	3.90	0.00	0.00	0.90	30.00
<b>Belarus</b>	0.70	0.55	0.60	0.60	1.64	2.18	2.17	2.17	1.15	1.20	1.30	1.30	0.00	0.00	0.10	8.33
<b>Ukraine</b>	0.61	0.36	0.35	0.35	1.72	1.67	1.57	1.57	1.05	0.60	0.55	0.55	0.00	0.00	-0.05	-8.33
<b>Canada</b>	0.14	0.16	0.11	0.11	2.43	2.34	2.09	2.09	0.33	0.38	0.23	0.23	0.00	0.00	-0.15	-39.95
<b>Turkey</b>	0.15	0.15	0.15	0.15	1.60	1.60	1.60	1.60	0.24	0.24	0.24	0.24	0.00	0.00	0.00	0.00
<b>Argentina</b>	0.05	0.05	0.05	0.05	1.15	1.15	1.15	1.15	0.06	0.06	0.06	0.06	0.00	0.00	0.00	0.00
<b>Kazakhstan,</b>	0.07	0.07	0.07	0.07	0.71	0.71	0.71	0.71	0.05	0.05	0.05	0.05	0.00	0.00	0.00	0.00
<b>Australia</b>	0.04	0.04	0.04	0.04	0.57	0.57	0.57	0.57	0.02	0.02	0.02	0.02	0.00	0.00	0.00	0.00
<b>Switzerland</b>	0.00	0.00	0.00	0.00	6.67	6.67	6.67	6.67	0.02	0.02	0.02	0.02	0.00	0.00	0.00	0.00
<b>Others</b>	0.09	0.08	0.10	0.09	1.92	1.85	1.99	2.00	0.17	0.15	0.19	0.18	-0.01	-3.70	0.03	21.33

World and Selected Countries and Regions

3/11/2008 10:50:28 AM

**Table 08 Sorghum Area, Yield, and Production**  
**1000 Metric Tons**

Country / Region	Area (Million hectares)				Yield (Metric tons per hectare)				Production (Million metric tons)				Change in Production			
	2005/06	Prel. 2006/07	2007/08 Feb	Proj. Mar	2005/06	Prel. 2006/07	2007/08 Feb	Proj. Mar	2005/06	Prel. 2006/07	2007/08 Feb	Proj. Mar	From last month MMT	Percent	From last year MMT	Percent
<b>World</b>	39.84	39.44	41.14	40.49	1.47	1.45	1.57	1.60	58.40	56.99	64.63	64.63	0.00	0.00	7.64	13.40
<b>United States</b>	2.32	2.00	2.75	2.75	4.30	3.53	4.66	4.66	9.98	7.05	12.83	12.83	0.00	0.00	5.78	81.94
<b>Total Foreign</b>	37.52	37.44	38.38	37.73	1.29	1.33	1.35	1.37	48.42	49.94	51.80	51.80	0.00	0.00	1.86	3.72
<b>Sub-Saharan Africa</b>																
Nigeria	7.40	7.40	7.40	7.40	1.42	1.42	1.35	1.35	10.50	10.50	10.00	10.00	0.00	0.00	-0.50	-4.76
Sudan	6.45	6.75	6.60	6.60	0.66	0.77	0.68	0.68	4.28	5.20	4.50	4.50	0.00	0.00	-0.70	-13.46
Ethiopia	1.75	1.88	1.88	1.88	1.60	1.77	1.76	1.76	2.80	3.33	3.30	3.30	0.00	0.00	-0.03	-0.75
Burkina	1.45	1.45	1.45	1.45	1.27	1.24	1.24	1.24	1.84	1.80	1.80	1.80	0.00	0.00	0.00	0.00
Tanzania, United	0.89	0.89	0.90	0.90	1.00	0.96	1.00	1.00	0.89	0.85	0.90	0.90	0.00	0.00	0.05	5.88
Niger	1.50	1.50	1.50	1.50	0.50	0.53	0.53	0.53	0.75	0.80	0.80	0.80	0.00	0.00	0.00	0.00
Uganda	0.30	0.31	0.31	0.31	1.53	1.58	1.58	1.58	0.45	0.49	0.49	0.49	0.00	0.00	0.00	0.00
Mozambique	0.49	0.50	0.50	0.50	0.66	0.70	0.70	0.70	0.33	0.35	0.35	0.35	0.00	0.00	0.00	0.00
Ghana	0.34	0.34	0.34	0.34	1.03	1.18	1.03	1.03	0.35	0.40	0.35	0.35	0.00	0.00	-0.05	-12.50
South Africa, Republic	0.04	0.07	0.09	0.09	2.59	2.51	2.56	2.56	0.10	0.18	0.23	0.23	0.00	0.00	0.05	30.68
<b>South Asia</b>																
India	9.00	8.51	9.00	8.40	0.85	0.84	0.84	0.87	7.63	7.15	7.60	7.30	-0.30	-3.95	0.15	2.10
Pakistan	0.40	0.40	0.40	0.40	0.58	0.58	0.58	0.58	0.23	0.23	0.23	0.23	0.00	0.00	0.00	0.00
<b>Mexico</b>	1.57	1.55	1.70	1.70	3.50	3.71	3.71	3.71	5.50	5.75	6.30	6.30	0.00	0.00	0.55	9.57
<b>China, Peoples</b>	0.57	0.57	0.60	0.55	4.47	3.71	4.33	4.73	2.55	2.10	2.60	2.60	0.00	0.00	0.50	23.93
<b>Australia</b>	0.77	0.64	0.80	0.80	2.52	2.15	2.75	3.13	1.93	1.37	2.20	2.50	0.30	13.64	1.13	82.88
<b>Egypt</b>	0.16	0.16	0.16	0.16	5.63	5.63	5.63	5.63	0.90	0.90	0.90	0.90	0.00	0.00	0.00	0.00
<b>EU-27</b>																
France	0.05	0.06	0.05	0.05	5.23	5.48	5.96	5.96	0.27	0.31	0.31	0.31	0.00	0.00	0.00	0.98
Italy	0.03	0.04	0.04	0.04	5.78	5.74	5.75	5.75	0.19	0.22	0.23	0.23	0.00	0.00	0.01	5.50
<b>Others</b>	4.37	4.44	4.67	4.67	1.59	1.81	1.87	1.87	6.95	8.03	8.71	8.71	0.00	0.00	0.68	8.45

World and Selected Countries and Regions

3/11/2008 10:50:29 AM

**Table 09 Rice Area, Yield, and Production**  
**1000 Metric Tons**

Country / Region	Area (Million hectares)				Yield (Metric tons per hectare)				Production (Million metric tons)				Change in Production			
	2005/06	Prel. 2006/07	2007/08 Feb	Proj. Mar	2005/06	Prel. 2006/07	2007/08 Feb	Proj. Mar	2005/06	Prel. 2006/07	2007/08 Feb	Proj. Mar	From last month MMT	Percent	From last year MMT	Percent
<b>World</b>	152.61	152.99	153.66	153.59	4.08	4.07	4.08	4.10	417.64	418.24	420.63	422.94	2.31	0.55	4.70	1.12
<b>United States</b>	1.36	1.14	1.11	1.11	7.44	7.69	8.05	8.05	7.11	6.24	6.31	6.31	0.00	0.00	0.08	1.20
<b>Total Foreign</b>	151.24	151.85	152.55	152.48	4.05	4.05	4.05	4.07	410.53	412.00	414.32	416.62	2.31	0.56	4.63	1.12
<b>East Asia</b>																
China, Peoples	28.85	29.30	29.60	29.60	6.26	6.23	6.25	6.25	126.41	127.80	129.50	129.50	0.00	0.00	1.70	1.33
Japan	1.71	1.69	1.65	1.67	6.65	6.34	6.61	6.51	8.26	7.79	7.94	7.93	-0.01	-0.16	0.14	1.85
Korea, Republic of	0.98	0.96	0.95	0.95	6.57	6.62	6.27	6.27	4.77	4.68	4.41	4.41	0.00	0.00	-0.27	-5.81
Korea, Democratic	0.59	0.59	0.59	0.59	4.21	4.08	3.81	3.81	1.60	1.55	1.45	1.45	0.00	0.00	-0.10	-6.45
<b>South Asia</b>																
India	43.40	44.00	44.00	44.00	3.17	3.18	3.14	3.20	91.79	93.35	92.00	94.00	2.00	2.17	0.65	0.70
Bangladesh	11.10	11.20	11.09	11.00	3.89	3.88	3.86	3.87	28.76	29.00	28.50	28.40	-0.10	-0.35	-0.60	-2.07
Pakistan	2.62	2.58	2.55	2.55	3.18	3.03	3.18	3.18	5.55	5.20	5.40	5.40	0.00	0.00	0.20	3.85
<b>Southeast Asia</b>																
Indonesia	11.80	11.40	11.60	11.60	4.59	4.53	4.54	4.54	34.96	33.30	34.00	34.00	0.00	0.00	0.70	2.10
Vietnam	7.31	7.21	7.25	7.25	4.72	4.81	4.86	4.86	22.77	22.89	23.26	23.26	0.00	0.00	0.37	1.60
Thailand	10.22	10.27	10.36	10.36	2.70	2.69	2.72	2.72	18.20	18.25	18.60	18.60	0.00	0.00	0.35	1.92
Burma, Union of	7.00	7.00	7.00	7.00	2.57	2.61	2.63	2.63	10.44	10.60	10.66	10.66	0.00	0.00	0.06	0.57
Philippines	4.16	4.19	4.20	4.20	3.63	3.70	3.67	3.81	9.82	10.09	10.01	10.40	0.39	3.90	0.32	3.12
Cambodia	2.40	2.40	2.45	2.45	2.50	2.25	2.64	2.64	3.78	4.00	4.08	4.08	0.00	0.00	0.08	1.88
Laos	0.74	0.76	0.76	0.76	3.49	3.49	3.49	3.49	1.54	1.59	1.59	1.59	0.00	0.00	0.00	0.00
Malaysia	0.66	0.65	0.66	0.66	3.36	3.30	3.38	3.45	1.44	1.39	1.45	1.48	0.03	2.07	0.10	6.86
<b>South America</b>																
Brazil	3.00	2.98	3.00	3.00	3.86	3.81	3.92	3.92	7.87	7.70	7.99	7.99	0.00	0.00	0.29	3.77
Peru	0.34	0.35	0.35	0.35	6.78	6.63	7.04	7.04	1.59	1.60	1.70	1.70	0.00	0.00	0.10	6.25
<b>Sub-Saharan Africa</b>																
Nigeria	2.00	2.05	2.20	2.20	2.25	2.36	2.27	2.27	2.70	2.90	3.00	3.00	0.00	0.00	0.10	3.45
Madagascar	1.35	1.35	1.35	1.35	2.52	2.59	2.67	2.67	2.18	2.24	2.30	2.30	0.00	0.00	0.06	2.86
<b>EU-27</b>																
Italy	0.22	0.23	0.23	0.23	6.45	6.28	6.28	6.28	0.88	0.87	0.87	0.87	0.00	0.00	0.00	0.00
Spain	0.12	0.11	0.10	0.10	6.92	7.04	7.25	7.25	0.58	0.52	0.52	0.52	0.00	0.00	-0.01	-0.96
<b>Egypt</b>	0.67	0.68	0.68	0.68	9.52	9.99	9.98	9.98	4.14	4.38	4.38	4.38	0.00	0.00	0.00	-0.07
<b>Iran</b>	0.63	0.63	0.63	0.63	4.37	4.76	5.24	5.24	1.82	1.98	2.18	2.18	0.00	0.00	0.20	10.00
<b>Others</b>	9.39	9.31	9.31	9.31	3.05	3.02	3.06	3.06	18.70	18.33	18.53	18.53	0.00	-0.01	0.20	1.09

World and Selected Countries and Regions  
Yield is on a rough basis, before the milling process  
Production is on a milled basis, after the milling process

3/11/2008 10:50:30 AM

**Table 10 5-Major Oilseeds; Area, Yield, and Production 1/  
1000 Metric Tons**

Country / Region	Area (Million hectares)				Yield (Metric tons per hectare)				Production (Million metric tons)				Change in Production			
	2005/06	Prel. 2006/07	2007/08 Proj.		2005/06	Prel. 2006/07	2007/08 Proj.		2005/06	Prel. 2006/07	2007/08 Proj.		From last month		From last year	
		Feb	Mar			Feb	Mar			Feb	Mar	MMT	Percent	MMT	Percent	
<b>World</b>	199.11	200.41	197.26	197.16	1.89	1.96	1.89	1.90	376.33	392.44	373.79	373.62	-0.18	-0.05	-18.82	-4.80
<b>United States</b>	36.59	36.96	31.44	31.44	2.61	2.61	2.55	2.55	95.53	96.61	80.01	80.01	0.00	0.00	-16.60	-17.19
<b>Total Foreign</b>	162.52	163.45	165.82	165.72	1.73	1.81	1.77	1.77	280.80	295.83	293.78	293.61	-0.18	-0.06	-2.22	-0.75
<b>South America</b>																
Brazil	23.26	21.99	22.84	22.64	2.54	2.82	2.78	2.83	59.10	61.98	63.53	64.03	0.50	0.79	2.06	3.32
Argentina	17.87	19.30	20.00	20.10	2.52	2.75	2.61	2.60	45.03	53.16	52.24	52.34	0.10	0.19	-0.83	-1.55
Paraguay	2.76	2.75	3.18	3.18	1.40	2.41	2.35	2.35	3.88	6.61	7.48	7.48	0.00	0.00	0.87	13.17
Bolivia	1.11	1.01	1.10	0.87	2.01	1.80	1.80	1.36	2.23	1.82	1.98	1.18	-0.80	-40.40	-0.64	-35.16
Uruguay	0.37	0.41	0.42	0.42	1.94	2.01	1.99	1.99	0.71	0.82	0.83	0.83	0.00	0.00	0.01	1.58
<b>China, Peoples</b>	28.05	27.73	26.99	26.99	2.04	2.13	2.06	2.01	57.23	59.09	55.61	54.32	-1.29	-2.32	-4.77	-8.08
<b>South Asia</b>																
India	33.32	31.98	33.20	33.10	0.90	0.92	0.99	1.01	29.94	29.28	32.75	33.45	0.70	2.14	4.17	14.23
Pakistan	3.76	4.01	4.07	4.07	1.34	1.31	1.15	1.20	5.05	5.25	4.69	4.89	0.20	4.27	-0.37	-6.97
<b>Former Soviet Union</b>																
Russian Federation	6.30	7.20	6.40	6.40	1.18	1.11	1.09	1.09	7.44	8.02	7.00	7.00	0.00	0.00	-1.02	-12.73
Ukraine	4.31	5.00	4.93	4.93	1.30	1.36	1.21	1.21	5.60	6.79	5.95	5.95	0.00	0.00	-0.84	-12.37
Uzbekistan, Republic	1.43	1.43	1.45	1.45	1.75	1.61	1.66	1.66	2.50	2.30	2.40	2.40	0.00	0.00	0.10	4.35
<b>Canada</b>	6.53	6.52	7.16	7.16	1.98	1.94	1.62	1.62	12.91	12.61	11.58	11.58	0.00	0.00	-1.04	-8.21
<b>EU-27</b>																
France	1.93	2.09	2.16	2.16	3.19	2.68	2.78	2.78	6.15	5.61	6.00	6.00	0.00	0.00	0.39	7.03
Germany	1.37	1.46	1.57	1.57	3.73	3.70	3.41	3.41	5.12	5.40	5.35	5.35	0.00	0.00	-0.05	-0.96
United Kingdom	0.59	0.58	0.68	0.68	3.21	3.28	3.10	3.10	1.90	1.89	2.11	2.11	0.00	0.00	0.22	11.64
Romania	1.15	1.34	1.27	1.27	1.65	1.62	0.77	0.77	1.90	2.17	0.98	0.98	0.00	0.00	-1.20	-55.15
Czech Republic	0.32	0.35	0.38	0.38	2.79	2.86	3.00	3.00	0.88	1.00	1.12	1.12	0.00	0.00	0.13	12.51
Hungary	0.66	0.71	0.72	0.76	2.22	2.25	1.85	2.08	1.46	1.60	1.34	1.58	0.24	17.91	-0.02	-1.31
Poland	0.55	0.63	0.81	0.81	2.63	2.63	2.62	2.62	1.46	1.66	2.11	2.11	0.00	0.00	0.45	27.16
Italy	0.29	0.33	0.26	0.26	2.98	2.65	2.90	2.90	0.85	0.87	0.74	0.74	0.00	0.00	-0.13	-14.45
<b>Australia</b>	1.44	1.25	0.98	1.28	1.72	0.85	1.27	1.13	2.49	1.07	1.24	1.44	0.20	16.08	0.38	35.59
<b>Turkey</b>	1.07	1.16	1.07	1.07	1.88	1.92	1.74	1.74	2.01	2.24	1.87	1.87	0.00	0.00	-0.36	-16.29
<b>Sub-Saharan Africa</b>																
Nigeria	2.04	2.05	2.08	2.08	1.04	1.04	1.05	1.05	2.12	2.13	2.19	2.19	0.00	0.00	0.06	2.86
South Africa, Republic	0.78	0.55	0.73	0.73	1.37	1.09	1.35	1.35	1.07	0.60	0.99	0.99	0.00	0.00	0.39	64.29
<b>Southeast Asia</b>																
Indonesia	1.40	1.38	1.33	1.33	1.44	1.47	1.46	1.46	2.02	2.03	1.94	1.94	0.00	0.00	-0.09	-4.19
<b>Others</b>	19.85	20.25	20.06	20.06	1.00	0.98	0.99	0.98	19.77	19.85	19.78	19.75	-0.03	-0.13	-0.10	-0.48

World and Selected Countries and Regions  
1/ (soybeans, sunflowerseed, rapeseed, cottonseed, and peanuts)

3/11/2008 10:50:33 AM

**Table 11 Soybean Area, Yield, and Production**

**1000 Metric Tons**

Country / Region	Area (Million hectares)				Yield (Metric tons per hectare)				Production (Million metric tons)				Change in Production			
	Prel.		2007/08 Proj.		Prel.		2007/08 Proj.		Prel.		2007/08 Proj.		From last month		From last year	
	2005/06	2006/07	Feb	Mar	2005/06	2006/07	Feb	Mar	2005/06	2006/07	Feb	Mar	MMT	Percent	MMT	Percent
<b>World</b>	92.92	94.29	91.29	90.85	2.37	2.52	2.41	2.42	220.59	237.27	220.08	219.85	-0.23	-0.10	-17.42	-7.34
<b>United States</b>	28.83	30.19	25.42	25.42	2.91	2.87	2.77	2.77	83.37	86.77	70.36	70.36	0.00	0.00	-16.41	-18.91
<b>Total Foreign</b>	64.08	64.10	65.87	65.43	2.14	2.35	2.27	2.28	137.22	150.50	149.72	149.49	-0.23	-0.15	-1.00	-0.67
<b>South America</b>																
Brazil	22.23	20.70	21.50	21.30	2.56	2.85	2.81	2.86	57.00	59.00	60.50	61.00	0.50	0.83	2.00	3.39
Argentina	15.20	16.30	16.80	16.80	2.66	2.99	2.80	2.80	40.50	48.80	47.00	47.00	0.00	0.00	-1.80	-3.69
Paraguay	2.43	2.40	2.80	2.80	1.50	2.58	2.50	2.50	3.64	6.20	7.00	7.00	0.00	0.00	0.80	12.90
Bolivia	0.95	0.85	0.96	0.73	2.17	1.94	1.93	1.44	2.06	1.65	1.85	1.05	-0.80	-43.24	-0.60	-36.36
Uruguay	0.31	0.37	0.40	0.40	2.05	2.13	2.03	2.03	0.63	0.78	0.81	0.81	0.00	0.00	0.03	4.11
<b>East Asia</b>																
China, Peoples	9.59	9.28	8.70	8.70	1.70	1.72	1.64	1.64	16.35	15.97	14.30	14.30	0.00	0.00	-1.67	-10.44
Korea, Republic of	0.11	0.09	0.09	0.08	1.74	1.73	1.65	1.50	0.18	0.16	0.14	0.11	-0.03	-18.57	-0.04	-26.92
Korea, Democratic	0.14	0.14	0.14	0.14	1.26	1.19	1.19	1.19	0.17	0.16	0.16	0.16	0.00	0.00	0.00	0.00
Japan	0.13	0.14	0.15	0.15	1.69	1.58	1.50	1.50	0.23	0.23	0.23	0.23	0.00	0.00	0.00	0.00
<b>India</b>	7.80	8.12	8.80	8.80	0.90	0.95	1.05	1.06	7.00	7.69	9.20	9.30	0.10	1.09	1.61	20.94
<b>Canada</b>	1.17	1.20	1.17	1.17	2.70	2.88	2.31	2.31	3.16	3.46	2.70	2.70	0.00	0.00	-0.76	-21.97
<b>Former Soviet Union</b>																
Ukraine	0.43	0.71	0.63	0.63	1.43	1.25	1.03	1.03	0.61	0.89	0.65	0.65	0.00	0.00	-0.24	-26.97
Russian Federation	0.66	0.82	0.85	0.85	1.05	0.91	0.92	0.92	0.69	0.74	0.78	0.78	0.00	0.00	0.04	5.41
<b>Southeast Asia</b>																
Indonesia	0.65	0.62	0.60	0.60	1.28	1.31	1.30	1.30	0.83	0.82	0.78	0.78	0.00	0.00	-0.04	-4.29
Vietnam	0.20	0.21	0.28	0.28	1.43	1.47	1.46	1.46	0.29	0.31	0.41	0.41	0.00	0.00	0.10	32.69
Thailand	0.14	0.15	0.15	0.15	1.57	1.45	1.52	1.52	0.23	0.21	0.22	0.22	0.00	0.00	0.01	4.76
Burma, Union of	0.16	0.15	0.15	0.15	1.21	1.17	1.17	1.17	0.19	0.18	0.18	0.18	0.00	0.00	0.00	0.00
<b>EU-27</b>																
Italy	0.15	0.18	0.14	0.14	3.64	3.10	3.30	3.30	0.55	0.55	0.45	0.45	0.00	0.00	-0.11	-19.24
France	0.06	0.05	0.04	0.04	2.49	2.73	2.86	2.86	0.14	0.12	0.10	0.10	0.00	0.00	-0.02	-18.70
<b>Sub-Saharan Africa</b>																
South Africa, Republic	0.24	0.18	0.17	0.17	1.77	1.13	1.76	1.76	0.42	0.21	0.29	0.29	0.00	0.00	0.08	40.78
Nigeria	0.42	0.43	0.44	0.44	1.02	1.02	1.02	1.02	0.43	0.44	0.45	0.45	0.00	0.00	0.01	2.27
Uganda	0.15	0.15	0.15	0.15	1.10	1.10	1.10	1.10	0.17	0.17	0.17	0.17	0.00	0.00	0.00	0.00
<b>Serbia</b>	0.00	0.17	0.15	0.15	0.00	2.12	2.20	2.20	0.00	0.35	0.33	0.33	0.00	0.00	-0.02	-5.71
<b>Mexico</b>	0.09	0.05	0.07	0.07	1.99	1.48	1.54	1.54	0.19	0.08	0.10	0.10	0.00	0.00	0.02	25.00
<b>Iran</b>	0.08	0.08	0.08	0.08	1.38	1.38	1.38	1.38	0.11	0.11	0.11	0.11	0.00	0.00	0.00	0.00
<b>Others</b>	0.60	0.58	0.49	0.49	2.40	2.14	1.68	1.68	1.45	1.24	0.83	0.83	0.00	0.00	-0.42	-33.60

World and Selected Countries and Regions

3/11/2008 10:50:22 AM



**Table 12 Cottonseed Area, Yield, and Production**  
**1000 Metric Tons**

Country / Region	Area (Million hectares)				Yield (Metric tons per hectare)				Production (Million metric tons)				Change in Production			
	Prel. 2005/06	2007/08 2006/07	2007/08 Feb	2007/08 Proj. Mar	Prel. 2005/06	2007/08 2006/07	2007/08 Feb	2007/08 Proj. Mar	Prel. 2005/06	2007/08 2006/07	2007/08 Feb	2007/08 Proj. Mar	From last month MMT	Percent	From last year MMT	Percent
<b>World</b>	33.90	33.83	32.90	32.90	1.30	1.35	1.38	1.38	43.95	45.82	45.36	45.37	0.01	0.02	-0.45	-0.97
<b>United States</b>	5.59	5.15	4.25	4.25	1.33	1.29	1.41	1.41	7.41	6.67	5.98	5.98	0.00	0.00	-0.68	-10.23
<b>Total Foreign</b>	28.31	28.68	28.66	28.66	1.29	1.36	1.37	1.37	36.53	39.15	39.38	39.39	0.01	0.03	0.24	0.60
<b>China, Peoples</b>	5.50	6.00	6.10	6.10	2.10	2.32	2.28	2.25	11.56	13.91	13.91	13.72	-0.19	-1.37	-0.19	-1.37
<b>South Asia</b>																
India	8.87	9.17	9.50	9.50	0.91	1.00	1.09	1.09	8.09	9.13	10.40	10.40	0.00	0.00	1.27	13.94
Pakistan	3.10	3.25	3.25	3.25	1.43	1.33	1.14	1.20	4.43	4.32	3.70	3.90	0.20	5.41	-0.42	-9.68
<b>Former Soviet Union</b>																
Uzbekistan, Republic	1.43	1.43	1.45	1.45	1.75	1.61	1.66	1.66	2.50	2.30	2.40	2.40	0.00	0.00	0.10	4.35
Turkmenistan	0.70	0.60	0.60	0.60	0.54	0.78	0.85	0.85	0.38	0.47	0.51	0.51	0.00	0.00	0.04	8.51
Tajikistan, Republic of	0.26	0.26	0.25	0.25	0.98	1.00	0.90	0.90	0.25	0.26	0.23	0.23	0.00	0.00	-0.03	-11.76
Kazakhstan, Republic	0.20	0.20	0.20	0.20	1.30	1.26	1.23	1.23	0.27	0.25	0.25	0.25	0.00	0.00	0.00	0.00
<b>South America</b>																
Brazil	0.85	1.09	1.15	1.15	2.06	2.38	2.33	2.33	1.75	2.61	2.68	2.68	0.00	0.00	0.08	2.88
Argentina	0.31	0.40	0.40	0.40	0.72	0.71	0.71	0.71	0.22	0.29	0.29	0.29	0.00	0.00	0.00	0.00
<b>Middle East</b>																
Turkey	0.60	0.64	0.57	0.57	1.92	1.98	1.88	1.88	1.15	1.27	1.07	1.07	0.00	0.00	-0.19	-15.34
Syria	0.25	0.21	0.20	0.20	2.88	2.10	2.76	2.76	0.71	0.45	0.55	0.55	0.00	0.00	0.10	22.44
Iran	0.17	0.12	0.12	0.12	0.94	1.02	0.98	0.98	0.16	0.12	0.12	0.12	0.00	0.00	0.00	0.00
<b>Australia</b>	0.34	0.15	0.08	0.08	2.56	2.90	2.45	2.45	0.86	0.42	0.18	0.18	0.00	0.00	-0.24	-56.19
<b>EU-27</b>																
Greece	0.36	0.37	0.31	0.31	1.78	1.22	1.46	1.46	0.64	0.45	0.45	0.45	0.00	0.00	0.00	0.00
Spain	0.09	0.05	0.06	0.06	1.91	1.27	0.92	0.92	0.16	0.07	0.06	0.06	0.00	0.00	-0.01	-10.61
<b>Sub-Saharan Africa</b>																
Burkina	0.63	0.70	0.43	0.43	0.60	0.51	0.49	0.49	0.38	0.36	0.21	0.21	0.00	0.00	-0.15	-42.34
Mali	0.52	0.46	0.30	0.30	0.55	0.49	0.45	0.45	0.28	0.22	0.13	0.13	0.00	0.00	-0.09	-40.18
Cameroon	0.23	0.20	0.20	0.20	0.92	0.91	0.69	0.69	0.21	0.18	0.14	0.14	0.00	0.00	-0.05	-24.73
Sudan	0.17	0.16	0.06	0.06	1.12	0.72	0.85	0.85	0.19	0.12	0.05	0.05	0.00	0.00	-0.06	-55.65
Zimbabwe	0.37	0.35	0.40	0.40	0.50	0.54	0.57	0.57	0.19	0.19	0.23	0.23	0.00	0.00	0.04	20.00
Nigeria	0.38	0.38	0.40	0.40	0.46	0.46	0.49	0.49	0.17	0.17	0.19	0.19	0.00	0.00	0.02	12.14
Benin	0.20	0.23	0.25	0.25	0.61	0.68	0.66	0.66	0.12	0.16	0.17	0.17	0.00	0.00	0.01	5.10
Uganda	0.27	0.27	0.27	0.27	0.29	0.31	0.24	0.24	0.08	0.08	0.07	0.07	0.00	0.00	-0.02	-20.48
<b>Egypt</b>	0.28	0.25	0.25	0.25	1.40	1.41	1.34	1.34	0.39	0.35	0.34	0.34	0.00	0.00	-0.01	-3.46
<b>Mexico</b>	0.13	0.12	0.12	0.12	1.73	1.89	1.85	1.85	0.22	0.22	0.23	0.23	0.00	0.00	0.01	5.99
<b>Burma, Union of</b>	0.30	0.30	0.30	0.30	0.53	0.53	0.53	0.53	0.16	0.16	0.16	0.16	0.00	0.00	0.00	0.00
<b>Others</b>	1.84	1.34	1.44	1.44	0.56	0.49	0.47	0.47	1.04	0.65	0.68	0.68	0.00	0.00	0.02	3.52

World and Selected Countries and Regions

3/11/2008 10:50:25 AM

**Table 13 Peanut Area, Yield, and Production**

**1000 Metric Tons**

Country / Region	Area (Million hectares)				Yield (Metric tons per hectare)				Production (Million metric tons)				Change in Production			
	Prel.		2007/08 Proj.		Prel.		2007/08 Proj.		Prel.		2007/08 Proj.		From last month		From last year	
	2005/06	2006/07	Feb	Mar	2005/06	2006/07	Feb	Mar	2005/06	2006/07	Feb	Mar	MMT	Percent	MMT	Percent
<b>World</b>	21.73	21.01	21.69	21.59	1.52	1.54	1.50	1.53	33.04	32.41	32.51	33.11	0.60	1.85	0.70	2.16
<b>United States</b>	0.66	0.49	0.48	0.48	3.35	3.21	3.51	3.51	2.21	1.57	1.70	1.70	0.00	0.00	0.13	8.02
<b>Total Foreign</b>	21.07	20.52	21.20	21.10	1.46	1.50	1.45	1.49	30.83	30.84	30.82	31.42	0.60	1.95	0.57	1.86
<b>China, Peoples</b>	4.66	4.57	4.60	4.60	3.08	3.21	3.04	3.04	14.34	14.67	14.00	14.00	0.00	0.00	-0.67	-4.54
<b>South Asia</b>																
India	6.86	5.91	6.50	6.40	0.92	0.91	0.92	1.03	6.30	5.39	6.00	6.60	0.60	10.00	1.22	22.56
Pakistan	0.11	0.11	0.11	0.11	0.90	0.90	0.90	0.90	0.10	0.10	0.10	0.10	0.00	0.00	0.00	0.00
<b>Sub-Saharan Africa</b>																
Nigeria	1.24	1.24	1.25	1.25	1.23	1.23	1.25	1.25	1.52	1.52	1.55	1.55	0.00	0.00	0.03	1.97
Senegal	0.77	0.59	0.65	0.65	0.91	0.77	0.65	0.65	0.70	0.46	0.42	0.42	0.00	0.00	-0.04	-8.70
Chad	0.48	0.48	0.50	0.50	0.94	0.94	0.94	0.94	0.45	0.45	0.47	0.47	0.00	0.00	0.02	4.44
Ghana	0.47	0.47	0.47	0.47	0.94	0.94	0.94	0.94	0.44	0.44	0.44	0.44	0.00	0.00	0.00	0.00
Sudan	0.55	1.00	1.00	1.00	0.67	0.85	0.85	0.85	0.37	0.85	0.85	0.85	0.00	0.00	0.00	0.00
Congo, Democratic	0.46	0.48	0.48	0.48	0.79	0.78	0.78	0.78	0.37	0.37	0.37	0.37	0.00	0.00	0.00	0.00
Burkina	0.35	0.35	0.35	0.35	0.93	0.99	1.01	1.01	0.32	0.34	0.35	0.35	0.00	0.00	0.01	2.94
Guinea	0.21	0.21	0.21	0.21	1.19	1.24	1.24	1.24	0.25	0.26	0.26	0.26	0.00	0.00	0.00	0.00
Cameroon	0.21	0.31	0.31	0.31	0.98	0.76	0.77	0.77	0.20	0.24	0.24	0.24	0.00	0.00	0.01	2.13
Mali	0.21	0.25	0.25	0.25	0.86	1.10	1.10	1.10	0.18	0.28	0.28	0.28	0.00	0.00	0.00	0.00
Malawi	0.21	0.22	0.22	0.22	0.76	0.93	1.20	1.20	0.16	0.20	0.27	0.27	0.00	0.00	0.06	29.90
Cote d'Ivoire	0.15	0.15	0.15	0.15	1.00	1.00	1.00	1.00	0.15	0.15	0.15	0.15	0.00	0.00	0.00	0.00
Uganda	0.21	0.21	0.21	0.21	0.70	0.70	0.70	0.70	0.15	0.15	0.15	0.15	0.00	0.00	0.00	0.00
Central African	0.13	0.13	0.13	0.13	1.12	1.12	1.12	1.12	0.14	0.14	0.14	0.14	0.00	0.00	0.00	0.00
Benin	0.16	0.16	0.16	0.16	0.81	0.81	0.81	0.81	0.13	0.13	0.13	0.13	0.00	0.00	0.00	0.00
Mozambique	0.29	0.29	0.29	0.29	0.38	0.38	0.38	0.38	0.11	0.11	0.11	0.11	0.00	0.00	0.00	0.00
Niger	0.26	0.26	0.26	0.26	0.42	0.42	0.42	0.42	0.11	0.11	0.11	0.11	0.00	0.00	0.00	0.00
South Africa, Republic	0.05	0.04	0.05	0.05	1.86	1.58	1.50	1.50	0.09	0.06	0.08	0.08	0.00	0.00	0.01	19.05
<b>Southeast Asia</b>																
Indonesia	0.74	0.75	0.72	0.72	1.58	1.60	1.60	1.60	1.17	1.20	1.15	1.15	0.00	0.00	-0.05	-4.17
Burma, Union of	0.77	0.80	0.80	0.80	0.99	1.10	1.10	1.10	0.77	0.88	0.88	0.88	0.00	0.00	0.00	0.00
Vietnam	0.27	0.26	0.26	0.26	1.80	1.77	1.77	1.77	0.49	0.46	0.46	0.46	0.00	0.00	0.00	0.00
Thailand	0.04	0.04	0.04	0.04	1.65	1.66	1.64	1.64	0.07	0.07	0.07	0.07	0.00	0.00	0.00	1.47
<b>South America</b>																
Argentina	0.16	0.20	0.20	0.20	3.11	2.88	2.75	2.75	0.51	0.58	0.55	0.55	0.00	0.00	-0.03	-4.35
Brazil	0.12	0.12	0.12	0.12	2.17	2.17	2.17	2.17	0.25	0.25	0.25	0.25	0.00	0.00	0.00	0.00
<b>Egypt</b>	0.06	0.06	0.06	0.06	3.17	3.17	3.17	3.17	0.19	0.19	0.19	0.19	0.00	0.00	0.00	0.00
<b>Mexico</b>	0.04	0.05	0.05	0.05	1.57	1.56	1.56	1.56	0.07	0.07	0.07	0.07	0.00	0.00	0.00	0.00
<b>Others</b>	0.84	0.84	0.84	0.84	0.89	0.89	0.90	0.90	0.74	0.75	0.75	0.75	0.00	0.00	0.00	0.13

World and Selected Countries and Regions

3/11/2008 10:50:23 AM

**Table 14 Sunflowerseed Area, Yield, and Production**  
**1000 Metric Tons**

Country / Region	Area (Million hectares)				Yield (Metric tons per hectare)				Production (Million metric tons)				Change in Production			
	2005/06	Prel. 2006/07	2007/08 Feb	Proj. Mar	2005/06	Prel. 2006/07	2007/08 Feb	Proj. Mar	2005/06	Prel. 2006/07	2007/08 Feb	Proj. Mar	From last month MMT	Percent	From last year MMT	Percent
<b>World</b>	23.12	23.84	22.66	22.79	1.30	1.26	1.21	1.21	30.02	30.15	27.33	27.67	0.34	1.24	-2.47	-8.21
<b>United States</b>	1.06	0.72	0.81	0.81	1.73	1.36	1.61	1.61	1.82	0.97	1.31	1.31	0.00	0.00	0.34	34.77
<b>Total Foreign</b>	22.06	23.13	21.84	21.98	1.28	1.26	1.19	1.20	28.20	29.17	26.02	26.36	0.34	1.31	-2.81	-9.64
<b>Former Soviet Union</b>																
Russian Federation	5.40	5.90	5.00	5.00	1.19	1.14	1.13	1.13	6.45	6.75	5.65	5.65	0.00	0.00	-1.10	-16.30
Ukraine	3.69	3.90	3.40	3.40	1.27	1.36	1.24	1.24	4.70	5.30	4.20	4.20	0.00	0.00	-1.10	-20.75
Moldova, Republic of	0.20	0.25	0.24	0.24	1.65	1.52	0.67	0.67	0.33	0.38	0.16	0.16	0.00	0.00	-0.22	-57.89
Kazakhstan, Republic	0.40	0.40	0.40	0.40	0.66	0.66	0.66	0.66	0.27	0.27	0.27	0.27	0.00	0.00	0.00	0.00
<b>South America</b>																
Argentina	2.20	2.40	2.60	2.70	1.73	1.46	1.69	1.67	3.80	3.50	4.40	4.50	0.10	2.27	1.00	28.57
Uruguay	0.06	0.04	0.02	0.02	1.37	1.02	1.20	1.20	0.08	0.04	0.02	0.02	0.00	0.00	-0.02	-44.19
Bolivia	0.16	0.16	0.14	0.14	1.06	1.06	0.93	0.93	0.17	0.17	0.13	0.13	0.00	0.00	-0.04	-23.53
<b>China, Peoples</b>	1.02	1.00	0.99	0.99	1.89	1.90	1.82	1.82	1.93	1.90	1.80	1.80	0.00	0.00	-0.10	-5.26
<b>EU-27</b>																
France	0.65	0.64	0.53	0.53	2.35	2.16	2.44	2.44	1.52	1.38	1.28	1.28	0.00	0.00	-0.10	-7.51
Hungary	0.51	0.54	0.48	0.51	2.17	2.21	1.68	2.04	1.10	1.19	0.80	1.04	0.24	30.00	-0.15	-12.31
Spain	0.52	0.63	0.70	0.70	0.70	0.96	1.00	1.00	0.36	0.61	0.70	0.70	0.00	0.00	0.09	15.32
Italy	0.13	0.15	0.11	0.11	2.22	2.12	2.50	2.50	0.29	0.31	0.28	0.28	0.00	0.00	-0.03	-10.71
Slovakia	0.10	0.10	0.08	0.08	2.37	2.11	2.25	2.25	0.23	0.20	0.18	0.18	0.00	0.00	-0.02	-10.00
<b>South Asia</b>																
India	2.41	2.15	2.50	2.50	0.64	0.60	0.66	0.66	1.55	1.28	1.65	1.65	0.00	0.00	0.37	28.91
Pakistan	0.33	0.41	0.45	0.45	1.07	1.28	1.24	1.24	0.35	0.52	0.56	0.56	0.00	0.00	0.04	7.69
<b>Turkey</b>	0.43	0.48	0.47	0.47	1.74	1.77	1.49	1.49	0.75	0.85	0.70	0.70	0.00	0.00	-0.15	-17.65
<b>South Africa,</b>	0.47	0.32	0.50	0.50	1.11	0.98	1.20	1.20	0.52	0.31	0.60	0.60	0.00	0.00	0.29	94.17
<b>Burma, Union of</b>	0.97	0.97	0.97	0.97	0.36	0.36	0.36	0.36	0.35	0.35	0.35	0.35	0.00	0.00	0.00	0.00
<b>Serbia</b>	0.00	0.21	0.13	0.13	0.00	1.90	2.00	2.00	0.00	0.40	0.26	0.26	0.00	0.00	-0.14	-35.00
<b>Canada</b>	0.08	0.08	0.08	0.08	1.19	2.00	1.58	1.58	0.09	0.15	0.13	0.13	0.00	0.00	-0.03	-16.67
<b>Australia</b>	0.08	0.02	0.05	0.05	1.24	1.06	1.11	1.11	0.10	0.02	0.05	0.05	0.00	0.00	0.03	177.78
<b>Others</b>	2.28	2.41	2.02	2.02	1.44	1.37	0.92	0.92	3.27	3.30	1.86	1.86	0.00	0.00	-1.44	-43.63

World and Selected Countries and Regions

3/11/2008 10:50:25 AM

**Table 15 Rapeseed Area, Yield, and Production**  
**1000 Metric Tons**

Country / Region	Area (Million hectares)				Yield (Metric tons per hectare)				Production (Million metric tons)				Change in Production			
	2005/06	Prel. 2006/07	2007/08 Feb	Proj. Mar	2005/06	Prel. 2006/07	2007/08 Feb	Proj. Mar	2005/06	Prel. 2006/07	2007/08 Feb	Proj. Mar	From last month MMT	Percent	From last year MMT	Percent
<b>World</b>	27.45	27.43	28.72	29.02	1.78	1.71	1.69	1.64	48.74	46.80	48.52	47.62	-0.90	-1.86	0.82	1.74
<b>United States</b>	0.45	0.41	0.47	0.47	1.59	1.53	1.40	1.40	0.72	0.63	0.66	0.66	0.00	0.00	0.03	4.27
<b>Total Foreign</b>	26.99	27.02	28.25	28.55	1.78	1.71	1.69	1.64	48.03	46.17	47.86	46.96	-0.90	-1.88	0.79	1.71
<b>EU-27</b>																
Germany	1.34	1.43	1.55	1.55	3.76	3.73	3.42	3.42	5.05	5.34	5.30	5.30	0.00	0.00	-0.04	-0.69
France	1.23	1.40	1.60	1.60	3.66	2.92	2.89	2.89	4.49	4.10	4.62	4.62	0.00	0.00	0.52	12.71
United Kingdom	0.59	0.58	0.68	0.68	3.21	3.28	3.10	3.10	1.90	1.89	2.11	2.11	0.00	0.00	0.22	11.64
Poland	0.55	0.62	0.80	0.80	2.64	2.65	2.63	2.63	1.45	1.65	2.10	2.10	0.00	0.00	0.45	27.12
Czech Republic	0.27	0.29	0.34	0.34	2.88	3.01	3.10	3.10	0.77	0.88	1.04	1.04	0.00	0.00	0.16	17.95
Denmark	0.13	0.13	0.18	0.18	2.74	3.44	3.33	3.33	0.34	0.43	0.60	0.60	0.00	0.00	0.17	39.53
Hungary	0.12	0.14	0.22	0.22	2.32	2.38	2.16	2.16	0.28	0.33	0.48	0.48	0.00	0.00	0.14	43.50
Romania	0.07	0.10	0.35	0.35	1.29	1.63	1.00	1.00	0.09	0.17	0.35	0.35	0.00	0.00	0.18	105.88
Slovakia	0.11	0.13	0.14	0.14	2.20	2.16	2.36	2.36	0.24	0.27	0.33	0.33	0.00	0.00	0.06	22.22
Sweden	0.08	0.09	0.09	0.09	2.41	2.45	2.47	2.47	0.20	0.22	0.23	0.23	0.00	0.00	0.00	0.90
Lithuania	0.11	0.15	0.18	0.18	1.84	1.13	1.89	1.89	0.20	0.17	0.33	0.33	0.00	0.00	0.16	94.12
Latvia	0.07	0.08	0.10	0.10	2.06	1.57	2.10	2.10	0.15	0.13	0.21	0.21	0.00	0.00	0.08	61.54
Austria	0.04	0.04	0.05	0.05	2.97	3.26	3.47	3.47	0.10	0.14	0.16	0.16	0.00	0.00	0.02	13.87
Finland	0.08	0.08	0.09	0.09	1.47	1.33	1.44	1.44	0.11	0.10	0.13	0.13	0.00	0.00	0.03	30.00
Estonia	0.05	0.06	0.07	0.07	1.87	1.35	1.93	1.93	0.09	0.09	0.14	0.14	0.00	0.00	0.05	58.82
<b>China, Peoples</b>	7.28	6.88	6.60	6.60	1.79	1.84	1.76	1.59	13.05	12.65	11.60	10.50	-1.10	-9.48	-2.15	-16.99
<b>South Asia</b>																
India	7.38	6.64	5.90	5.90	0.95	0.87	0.93	0.93	7.00	5.80	5.50	5.50	0.00	0.00	-0.30	-5.17
Pakistan	0.23	0.25	0.26	0.26	0.79	1.30	1.27	1.27	0.18	0.32	0.33	0.33	0.00	0.00	0.01	3.77
Bangladesh	0.30	0.31	0.31	0.31	0.83	0.82	0.82	0.82	0.25	0.26	0.26	0.26	0.00	0.00	0.00	0.00
<b>Canada</b>	5.28	5.24	5.91	5.91	1.83	1.72	1.48	1.48	9.66	9.00	8.75	8.75	0.00	0.00	-0.25	-2.78
<b>Australia</b>	0.97	1.03	0.80	1.10	1.46	0.50	1.13	1.00	1.42	0.52	0.90	1.10	0.20	22.22	0.58	112.77
<b>Former Soviet Union</b>																
Ukraine	0.20	0.39	0.90	0.90	1.46	1.54	1.22	1.22	0.29	0.60	1.10	1.10	0.00	0.00	0.50	83.33
Russian Federation	0.24	0.48	0.55	0.55	1.24	1.09	1.03	1.03	0.30	0.53	0.57	0.57	0.00	0.00	0.04	7.62
Belarus	0.12	0.15	0.15	0.15	1.23	1.20	1.20	1.20	0.15	0.18	0.18	0.18	0.00	0.00	0.00	0.00
<b>Paraguay</b>	0.05	0.10	0.10	0.10	1.50	1.50	1.50	1.50	0.08	0.15	0.15	0.15	0.00	0.00	0.00	0.00
<b>Others</b>	0.12	0.23	0.34	0.34	1.64	1.16	1.21	1.21	0.20	0.27	0.42	0.42	0.00	0.00	0.15	54.65

World and Selected Countries and Regions

3/11/2008 10:50:24 AM

**Table 16 Copra, Palm Kernel, and Palm Oil Production**  
**1000 Metric Tons**

Country / Region	Production (Million metric tons)				Change in Production			
	2005/06	Prel. 2006/07	2007/08 Proj.		From last month		From last year	
			Feb	Mar	MMT	Percent	MMT	Percent
<b>Oilseed, Copra</b>								
Philippines	2.40	2.20	2.10	2.10	0.00	0.00	-0.10	-0.05
Indonesia	1.44	1.44	1.50	1.50	0.00	0.00	0.06	0.04
India	0.65	0.62	0.75	0.75	0.00	0.00	0.13	0.21
Vietnam	0.24	0.24	0.24	0.24	0.00	0.00	0.00	0.00
Mexico	0.22	0.23	0.23	0.23	0.00	0.00	0.00	0.00
Papua New Guinea	0.11	0.11	0.11	0.11	0.00	0.00	0.00	0.00
Sri Lanka	0.08	0.08	0.08	0.08	0.00	0.00	0.00	0.00
Thailand	0.07	0.07	0.07	0.07	0.00	0.00	0.00	0.00
Mozambique	0.05	0.05	0.05	0.05	0.00	0.00	0.00	0.00
Cote d'Ivoire	0.05	0.05	0.05	0.05	0.00	0.00	0.00	0.00
World	5.50	5.28	5.37	5.37	0.00	0.00	0.09	0.02
<b>Oilseed, Palm Kernel</b>								
Indonesia	4.24	4.45	4.80	4.79	-0.01	0.00	0.34	0.08
Malaysia	4.05	4.07	4.40	4.57	0.17	0.04	0.50	0.12
Nigeria	0.65	0.67	0.67	0.67	0.00	0.00	0.01	0.02
Thailand	0.18	0.20	0.20	0.20	0.00	0.00	0.00	0.00
Colombia	0.16	0.17	0.17	0.17	0.00	0.00	0.00	0.00
Papua New Guinea	0.08	0.08	0.08	0.08	0.00	0.00	0.00	0.00
Cote d'Ivoire	0.08	0.08	0.08	0.08	0.00	0.00	0.00	0.00
Cameroon	0.07	0.07	0.07	0.07	0.00	0.00	0.00	0.00
Ecuador	0.05	0.06	0.06	0.06	0.00	0.00	0.00	0.00
Congo, Democratic Rep of	0.06	0.06	0.06	0.06	0.00	0.00	0.00	0.00
World	9.98	10.27	10.95	11.11	0.16	0.01	0.84	0.08
<b>Oil, Palm</b>								
Indonesia	15.56	16.60	18.30	18.30	0.00	0.00	1.70	0.10
Malaysia	15.49	15.29	17.00	17.20	0.20	0.01	1.91	0.12
Thailand	0.76	0.85	0.95	0.95	0.00	0.00	0.10	0.12
Nigeria	0.80	0.81	0.82	0.82	0.00	0.00	0.01	0.01
Colombia	0.69	0.77	0.83	0.83	0.00	0.00	0.06	0.08
Papua New Guinea	0.35	0.38	0.38	0.38	0.00	0.00	0.00	0.00
Ecuador	0.31	0.34	0.34	0.34	0.00	0.00	0.00	0.00
Cote d'Ivoire	0.36	0.32	0.32	0.32	0.00	0.00	0.00	0.00
Costa Rica	0.29	0.29	0.29	0.29	0.00	0.00	0.00	0.00
Congo, Democratic Rep of	0.18	0.18	0.18	0.18	0.00	0.00	0.00	0.00
World	35.94	37.02	40.60	40.80	0.20	0.00	3.78	0.10

World and Selected Countries and Regions

3/11/2008 10:50:27 AM

**Table 17 Cotton Area, Yield, and Production**  
**1000 480 lb. Bales**

Country / Region	Area (Million hectares)				Yield (Kilograms per hectare)				Production (Million 480 lb. bales)				Change in Production			
	2005/06	Prel. 2006/07	2007/08 Feb	Proj. Mar	2005/06	Prel. 2006/07	2007/08 Feb	Proj. Mar	2005/06	Prel. 2006/07	2007/08 Feb	Proj. Mar	From last month MBales	Percent	From last year MBales	Percent
<b>World</b>	34.884	34.715	33.756	33.711	735.000	766.000	769.000	768.000	117.690	122.081	119.208	118.893	-0.315	-0.264	-3.188	-2.611
<b>United States</b>	5.586	5.152	4.246	4.246	931.000	912.000	976.000	976.000	23.890	21.588	19.033	19.033	0.000	0.000	-2.555	-11.835
<b>Total Foreign</b>	29.298	29.563	29.510	29.465	697.000	740.000	739.000	738.000	93.800	100.493	100.175	99.860	-0.315	-0.314	-0.633	-0.630
<b>China, Peoples</b>	5.500	6.000	6.100	6.100	1,168.0	1,288.0	1,267.0	1,249.0	29.500	35.500	35.500	35.000	-0.500	-1.408	-0.500	-1.408
<b>South Asia</b>																
India	8.873	9.166	9.500	9.500	467.000	518.000	562.000	562.000	19.050	21.800	24.500	24.500	0.000	0.000	2.700	12.385
Pakistan	3.101	3.250	3.250	3.250	714.000	663.000	576.000	603.000	10.165	9.900	8.600	9.000	0.400	4.651	-0.900	-9.091
<b>Former Soviet Union</b>																
Uzbekistan, Republic	1.432	1.430	1.450	1.450	844.000	815.000	826.000	826.000	5.550	5.350	5.500	5.500	0.000	0.000	0.150	2.804
Turkmenistan	0.600	0.600	0.600	0.600	354.000	435.000	472.000	472.000	0.975	1.200	1.300	1.300	0.000	0.000	0.100	8.333
Tajikistan, Republic of	0.255	0.255	0.250	0.250	542.000	551.000	523.000	523.000	0.635	0.645	0.600	0.600	0.000	0.000	-0.045	-6.977
Kazakhstan, Republic	0.204	0.195	0.200	0.200	720.000	698.000	680.000	680.000	0.675	0.625	0.625	0.625	0.000	0.000	0.000	0.000
<b>Sub-Saharan Africa</b>																
Burkina	0.630	0.700	0.425	0.425	472.000	404.000	384.000	384.000	1.367	1.300	0.750	0.750	0.000	0.000	-0.550	-42.308
Mali	0.521	0.460	0.300	0.300	419.000	375.000	345.000	345.000	1.003	0.792	0.475	0.475	0.000	0.000	-0.317	-40.025
Zimbabwe	0.370	0.350	0.400	0.400	288.000	311.000	327.000	327.000	0.490	0.500	0.600	0.600	0.000	0.000	0.100	20.000
Benin	0.200	0.231	0.250	0.250	400.000	448.000	435.000	435.000	0.367	0.475	0.500	0.500	0.000	0.000	0.025	5.263
Cote d'Ivoire	0.265	0.214	0.200	0.200	411.000	317.000	299.000	299.000	0.500	0.312	0.275	0.275	0.000	0.000	-0.037	-11.859
Cameroon	0.225	0.200	0.200	0.200	402.000	397.000	299.000	299.000	0.415	0.365	0.275	0.275	0.000	0.000	-0.090	-24.658
Nigeria	0.380	0.380	0.395	0.395	229.000	229.000	248.000	248.000	0.400	0.400	0.450	0.450	0.000	0.000	0.050	12.500
Sudan	0.170	0.160	0.060	0.060	474.000	306.000	363.000	363.000	0.370	0.225	0.100	0.100	0.000	0.000	-0.125	-55.556
<b>South America</b>																
Brazil	0.850	1.094	1.150	1.125	1,204.0	1,393.0	1,363.0	1,374.0	4.700	7.000	7.200	7.100	-0.100	-1.389	0.100	1.429
Argentina	0.305	0.400	0.360	0.360	446.000	435.000	438.000	438.000	0.625	0.800	0.725	0.725	0.000	0.000	-0.075	-9.375
Paraguay	0.240	0.125	0.080	0.060	236.000	279.000	354.000	417.000	0.260	0.160	0.130	0.115	-0.015	-11.538	-0.045	-28.125
<b>Middle East</b>																
Turkey	0.600	0.640	0.570	0.570	1,288.0	1,327.0	1,261.0	1,222.0	3.550	3.900	3.300	3.200	-0.100	-3.030	-0.700	-17.949
Syria	0.245	0.214	0.200	0.200	1,422.0	1,038.0	1,252.0	1,252.0	1.600	1.020	1.150	1.150	0.000	0.000	0.130	12.745
Iran	0.165	0.115	0.120	0.120	699.000	757.000	726.000	726.000	0.530	0.400	0.400	0.400	0.000	0.000	0.000	0.000
<b>Australia</b>	0.336	0.145	0.075	0.075	1,814.0	2,027.0	1,742.0	1,742.0	2.800	1.350	0.600	0.600	0.000	0.000	-0.750	-55.556
<b>EU-27</b>																
Greece	0.355	0.330	0.310	0.310	1,211.0	924.000	983.000	983.000	1.975	1.400	1.400	1.400	0.000	0.000	0.000	0.000
Spain	0.086	0.052	0.064	0.064	1,342.0	892.000	646.000	646.000	0.530	0.213	0.190	0.190	0.000	0.000	-0.023	-10.798
<b>Egypt</b>	0.275	0.246	0.250	0.250	743.000	863.000	914.000	914.000	0.938	0.975	1.050	1.050	0.000	0.000	0.075	7.692
<b>Mexico</b>	0.126	0.115	0.105	0.105	1,097.0	1,231.0	1,348.0	1,348.0	0.635	0.650	0.650	0.650	0.000	0.000	0.000	0.000
<b>Others</b>	2.989	2.496	2.646	2.646	306.000	282.000	274.000	274.000	4.195	3.236	3.330	3.330	0.000	0.000	0.094	2.905

World and Selected Countries and Regions

3/11/2008 10:50:25 AM

**TABLE 18**

The table below presents a 26-year record of the differences between the March projection and the final estimate. Using world wheat production as an example, changes between the March projection and the final estimate have averaged 2.5 million tons (0.5 percent) and ranged from -8.0 to 6.9 million tons. The March projection has been below the final 18 times and above the final 8 times.

**RELIABILITY OF PRODUCTION PROJECTIONS**

COMMODITY AND REGION	PROJECTION AND FINAL ESTIMATES, 1981/82 - 2005/06 1/					
	Difference		Lowest	Highest	Below	Above
	Average	Average	Difference		Final	Final
	Percent	---Million metric tons---		Number of years 2/		
<b>WHEAT</b>						
World	0.5	2.5	-8.0	6.9	18	8
U.S.	0.1	0.1	-0.2	0.1	11	6
Foreign	0.5	2.4	-8.0	6.9	18	8
<b>COARSE GRAINS 3/</b>						
World	0.9	7.7	-17.3	10.9	21	5
U.S.	0.0	0.1	-0.2	1.3	11	6
Foreign	1.3	7.7	-17.3	10.9	21	5
<b>RICE (Milled)</b>						
World	1.1	3.7	-13.7	3.4	19	7
U.S.	0.9	0.1	-0.2	0.2	10	4
Foreign	1.1	3.7	-13.7	3.3	19	7
<b>SOYBEANS</b>						
World	1.8	2.8	-6.4	10.8	15	11
U.S.	0.9	0.5	-1.6	1.8	10	11
Foreign	3.0	2.5	-6.4	10.3	16	10
	---Million 480-lb. bales---					
<b>COTTON</b>						
World	1.3	1.2	-5.2	3.0	16	8
U.S.	0.6	0.1	-0.2	0.3	10	15
Foreign	1.6	1.2	-5.3	2.9	16	9
<b>UNITED STATES</b>	-----Million bushels-----					
CORN	0.0	2	-8	38	1	1
SORGHUM	0.0	0	0	4	0	2
BARLEY	0.3	1	-3	11	11	4
OATS	0.1	0	-2	1	4	3

1/ The final estimate for 1981/82-2004/05 is defined as the first December estimate following the marketing year.

2/ May not total 25 if projection was the same as the final.

3/ Includes corn, sorghum, barley, oats, rye, millet, and mixed grain.

March 2006

Office of Global Analysis, FAS, USDA