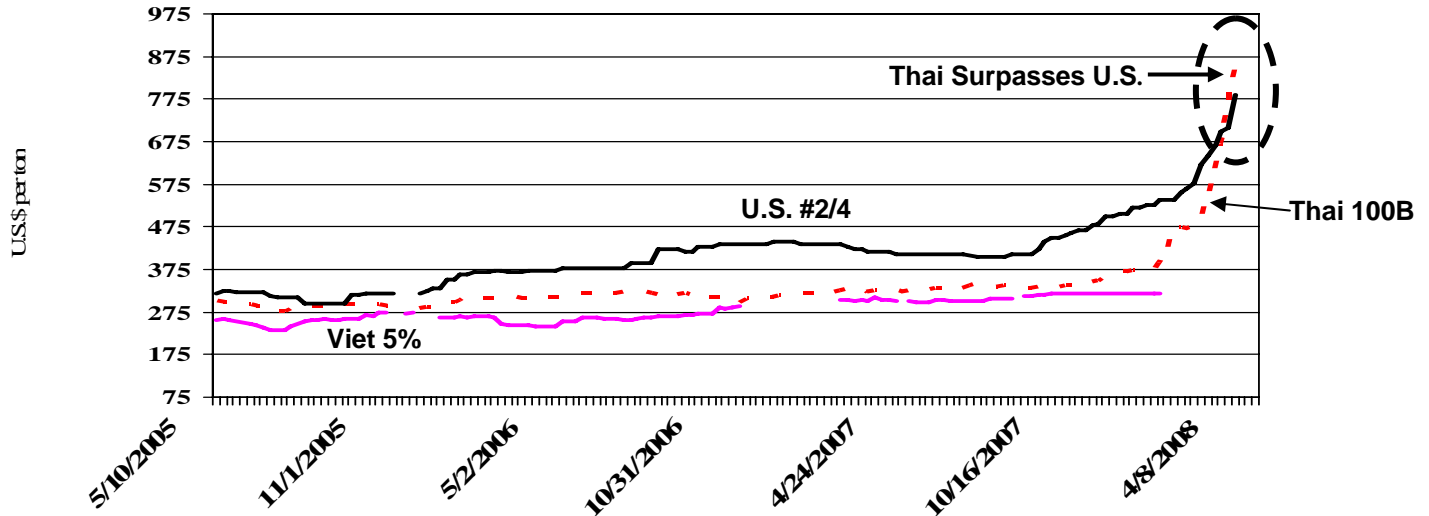


Grain: World Markets and Trade

Record Prices Reflect Concern Over Tightening Supplies



The cutback in exportable supplies has resulted in record rice prices, as indicated by Thailand and the United States. Some major suppliers have banned or restricted exports, in order to protect domestic supplies and dampen their own food price inflation. Government trade policies could continue to diminish exportable supplies, which would place additional upward pressure on prices.

Vietnam, the world's second-largest supplier, has reimposed a ban on exports that reportedly could cut shipments by at least 20 percent, which would be a million tons less than the previous year at 4.5mmt. **China** placed a tax and quota system on exports. **Egypt** banned exports from April 1 through October 2008 to help stabilize high domestic prices, which had nearly doubled in recent months. The ban had an immediate impact on prices, which dropped almost 25 per cent (\$100 per ton) on the local market. **India** recently imposed an export ban on non-basmati rice to replace its minimum export price, which had more than doubled to \$1000 per ton since October 2007.

Although **Thailand** is not presently limiting or restricting exports, it is faced with tightening domestic supplies and record prices. The Government reportedly may release its own stocks onto the domestic market to help lower prices caused by the threat of falling domestic supply, which has been fueled by strong export sales. **U.S.** ending stocks are forecast at a 27-year low, but there could be additional foreign demand for U.S. rice. The weakening dollar makes U.S. commodities more competitive in the world market, and constrained shipments from traditional suppliers could cause importers to increase purchases from the United States.

TABLE OF CONTENTS

World Markets and Trade: Commentary and Current Data	
Wheat	4
Rice	10
Coarse Grains.....	15
Historical Data Series for Selected Regions and Countries	38
Endnotes to Grain: World Markets and Trade	63

The Foreign Agricultural Service (FAS) updates its production, supply and distribution database for cotton, oilseeds, and grains at 9 a.m. on the day the World Agricultural Supply and Demand Estimates (WASDE) report is released. It is available on the FAS website (<http://www.fas.usda.gov/psdonline/>). This circular is released at 9:30 a.m. on the same day, together with its downloadable data set.

All Grain Summary Comparison

	Marketing Year	Wheat			Rice, Milled			Corn		
		2005/06	2006/07	2007/08	2005/06	2006/07	2007/08	2005/06	2006/07	2007/08
Production										
United States	(Jun-May)	57.3	49.3	56.2	7.1	6.2	6.3	282.3	267.6	332.1
Other		564.0	543.6	550.4	410.9	414.3	419.0	414.6	437.7	440.1
World Total		621.3	593.0	606.7	418.1	420.6	425.3	696.9	705.3	772.2
Domestic Consumption										
United States	(Jun-May)	31.4	31.0	29.8	3.8	4.1	4.0	232.1	230.8	269.5
Other		587.0	586.4	587.2	407.9	413.9	418.6	470.4	489.2	504.8
World Total		618.4	617.4	617.0	411.8	417.9	422.5	702.4	720.0	774.3
Ending Stocks										
United States	(Jun-May)	15.5	12.4	6.6	1.4	1.3	0.7	50.0	33.1	32.6
Other		132.1	112.4	105.9	75.1	74.8	76.5	75.1	75.1	70.4
World Total		147.7	124.8	112.5	76.5	76.1	77.2	125.1	108.2	103.0
TY Imports										
United States	(Jun-May)	2.3	3.4	2.9	0.6	0.7	0.7	0.2	0.3	0.4
Other		108.0	108.7	102.5	25.9	27.0	24.7	79.5	89.8	93.2
World Total		110.3	112.1	105.4	26.6	27.7	25.4	79.7	90.1	93.5
TY Exports										
United States	(Jun-May)	27.4	25.0	35.5	3.3	3.0	3.5	56.1	54.2	63.0
Other		85.9	90.0	73.1	26.1	27.3	24.0	26.5	36.8	33.1
World Total		113.3	115.0	108.6	29.4	30.3	27.5	82.6	91.0	96.1

Note: Consumption in this table has not been adjusted for differences in marketing year imports and exports and therefore differs from global totals shown elsewhere.

Marketing years for U.S. grains are: Wheat (Jun-May), Rice (Aug-Jul), Corn (Sep-Aug).
'Marketing Year' column is germane for U.S. wheat only.

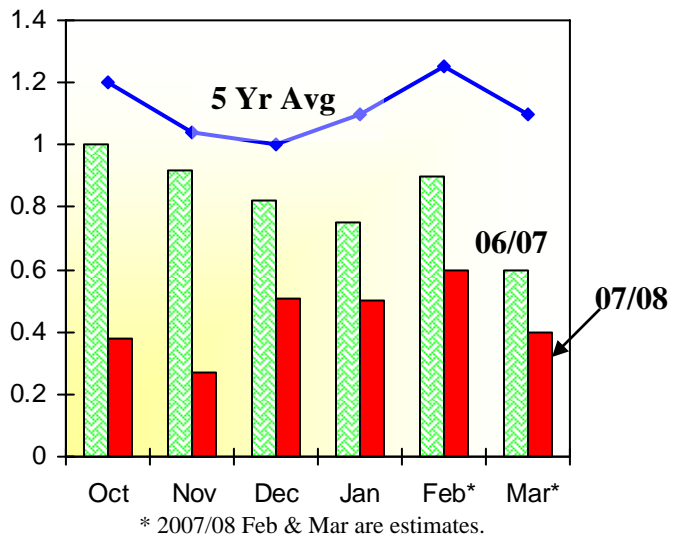
WHEAT: WORLD MARKETS AND TRADE

MONTHLY HIGHLIGHTS:

This month, cuts in Australian, Argentine and Ukrainian exports were offset by boosting the U.S. estimate 2 million tons.

Australia's export prospects are worse than previously thought and its exports have been cut another 500,000 tons to 7.5 million, the lowest in 13 years. Domestic industries are paying higher prices in order to keep more of the limited supplies in the country. After the first four months of data from the October/September marketing year, the monthly shipments are well below last year and substantially behind the 5-year average. Preliminary estimates for February and March indicate that the pace of shipments continues to be slower than previously forecast.

**Australia's Monthly Shipment
Pace Slower than Expected
2007/08**



PRICES:

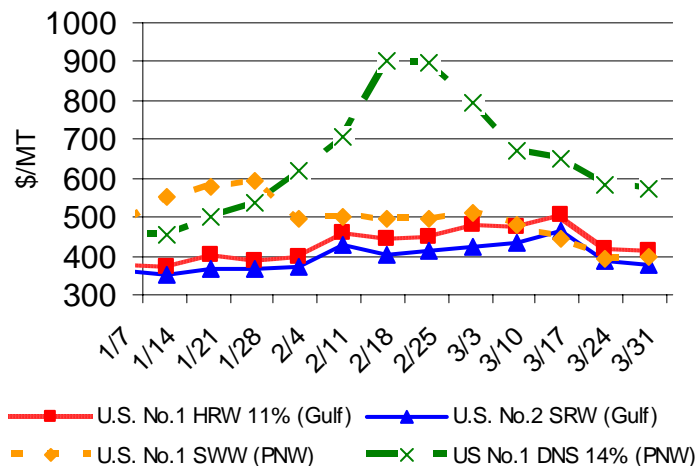
Domestic: In March, wheat prices retreated from their historic highs. Demand was strong for Soft Red Winter (SRW) and Hard Red Winter (HRW) with surprising sales reported to West and North Africa and steady for all other classes. For the month HRW was down \$60 per ton, Hard Red Spring (HRS) plunged \$100, SRW dropped \$55, and Soft White (SWW) slumped \$80.

TRADE CHANGES IN 2007/2008

Selected Exporters

- **Argentina** is lowered 500,000 tons to 9.5 million on continued delays in finalizing export registration procedures.
- **Australia** is cut 500,000 tons to 7.5 million, the lowest level in 13 years, as shipments have been lower than expected.

U.S. Weekly FOB Export Bids



-
- **Brazil** is boosted 200,000 tons to 500,000 due to large shipments to Algeria, Pakistan, and Morocco.
 - **China** is up 200,000 tons to 2.7 million based on strong February flour shipments to Hong Kong, Indonesia, Malaysia, and the Philippines.
 - **Ukraine** is slashed 1.0 million tons to 500,000 as the government extended its export quota until the end of April.
 - **United States** is raised 2.0 million tons to 35.5 million, the highest in over 15 years, as sales and shipments to a range of markets maintain a consistently strong pace.

Selected Importers

- **Ethiopia** is down 200,000 tons to 300,000 on an increased, old-crop production estimate and slow year-to-date shipments.
- **Libya** is up 200,000 tons to 1.3 million due to large shipments from both Russia and EU-27.
- **Tunisia** is raised 200,000 tons to 1.5 million with greater-than-expected imports from Kazakhstan.

World Wheat, Flour, and Products Trade
July/June Year, Thousand Metric Tons

	2003/04	2004/05	2005/06	2006/07	2007/08 Mar	2007/08 Apr
TY Exports						
Argentina	7,346	13,502	8,301	12,210	10,000	9,500
Australia	15,096	15,826	15,213	11,241	8,000	7,500
Canada	15,526	15,117	15,616	19,481	14,500	14,500
China, Peoples Republic of	2,824	1,171	1,397	2,783	2,500	2,700
EU-27	9,834	14,745	15,694	13,873	9,000	9,000
Kazakhstan, Republic of	4,217	3,039	3,817	8,000	8,500	8,500
Pakistan	43	50	50	200	1,000	1,000
Russian Federation	3,114	7,951	10,664	10,790	12,500	12,500
Syria	1,200	600	600	1,500	800	800
Turkey	854	2,217	2,900	2,000	1,500	1,500
Others	11,126	9,978	11,631	7,931	6,250	5,575
Subtotal	71,180	84,196	85,883	90,009	74,550	73,075
United States	32,295	28,464	27,424	25,025	33,500	35,500
World Total	103,475	112,660	113,307	115,034	108,050	108,575
TY Imports						
Algeria	3,933	5,398	5,469	4,879	4,400	4,400
Bangladesh	1,945	2,058	2,009	1,806	1,800	1,800
Brazil	5,559	5,309	6,194	7,750	7,000	7,000
Colombia	1,246	1,248	1,314	1,241	1,250	1,250
Egypt	7,295	8,150	7,771	7,300	7,000	7,000
EU-27	7,374	7,061	6,758	5,137	6,500	6,500
India	8	14	118	6,708	1,800	1,800
Indonesia	4,535	4,661	4,981	5,572	5,300	5,300
Iraq	1,925	3,010	4,878	3,000	3,000	3,000
Japan	5,751	5,744	5,469	5,747	5,500	5,500
Korea, Republic of	3,434	3,591	3,884	3,439	3,000	3,000
Libya	1,057	1,508	1,639	884	1,100	1,300
Malaysia	1,329	1,412	1,216	1,202	1,200	1,200
Mexico	3,644	3,717	3,549	3,610	3,600	3,600
Morocco	2,414	2,272	2,418	1,801	4,000	4,000
Nigeria	2,383	3,014	3,656	3,316	3,000	3,000
Peru	1,488	1,449	1,656	1,332	1,300	1,300
Philippines	2,975	2,593	2,954	2,746	2,500	2,500
South Africa, Republic of	911	1,407	1,242	885	1,250	1,250
Sudan	995	1,522	1,659	1,303	1,200	1,200
Thailand	1,139	1,081	1,174	1,131	1,200	1,200
Tunisia	781	1,079	1,263	1,433	1,300	1,500
Turkey	1,056	372	64	1,833	1,500	1,500
Venezuela	1,538	1,504	1,691	1,765	1,600	1,600
Yemen	1,635	1,853	2,143	2,350	1,900	1,900
Others	32,285	36,745	32,817	30,503	28,910	28,900
Subtotal	98,635	107,772	107,986	108,673	102,110	102,500
Unaccounted	3,080	2,942	3,012	2,966	3,040	3,175
United States	1,760	1,946	2,309	3,395	2,900	2,900
World Total	103,475	112,660	113,307	115,034	108,050	108,575

TY=Trade Year, see Endnotes.

World Wheat Production, Consumption, and Stocks
Local Marketing Years, Thousand Metric Tons

	2003/04	2004/05	2005/06	2006/07	2007/08 Mar	2007/08 Apr
Production						
Argentina	14,500	16,000	14,500	15,200	15,500	15,500
Australia	26,132	21,905	25,173	10,641	13,100	13,100
Canada	23,049	24,796	25,748	25,265	20,050	20,050
China, Peoples Republic of	86,490	91,950	97,450	104,470	106,000	106,000
Egypt	6,443	7,177	8,184	8,274	8,320	8,275
Ethiopia	2,000	2,300	2,700	3,700	3,700	4,900
EU-27	110,578	146,886	132,356	124,800	119,646	119,646
India	65,100	72,150	68,640	69,350	75,810	75,810
Iran	13,440	14,568	14,308	14,500	15,000	15,000
Kazakhstan, Republic of	11,000	9,950	11,000	13,500	16,600	16,600
Pakistan	19,183	19,500	21,612	21,700	23,000	23,000
Russian Federation	34,100	45,400	47,700	44,900	49,400	49,400
Turkey	16,800	18,500	18,500	17,500	15,500	15,500
Ukraine	3,600	17,500	18,700	14,000	13,900	13,900
Uzbekistan, Republic of	5,400	5,250	5,800	5,850	6,000	6,200
Others	52,547	53,578	51,654	49,993	47,188	47,564
Subtotal	490,362	567,410	564,025	543,643	548,714	550,445
United States	63,814	58,738	57,280	49,316	56,247	56,247
World Total	554,176	626,148	621,305	592,959	604,961	606,692
Total Consumption						
Algeria	6,800	7,300	7,500	7,650	7,750	7,750
Brazil	9,800	10,200	10,800	10,500	10,500	10,500
Canada	7,186	8,232	8,319	8,738	9,100	9,100
China, Peoples Republic of	104,500	102,000	101,000	101,000	100,500	100,500
Egypt	13,300	14,200	14,800	15,450	16,100	16,100
EU-27	115,095	123,220	127,525	125,500	119,965	118,965
India	68,258	72,838	69,971	73,358	75,850	75,850
Iran	14,550	14,550	14,800	15,300	15,600	15,500
Kazakhstan, Republic of	6,800	7,400	7,400	7,500	7,500	7,500
Morocco	6,400	6,600	6,800	7,150	7,150	7,150
Pakistan	19,100	20,000	21,500	21,900	22,400	22,400
Russian Federation	35,500	37,400	38,400	36,400	38,200	38,200
Turkey	16,800	16,800	16,100	16,650	16,450	16,450
Ukraine	9,025	11,700	12,500	11,700	12,700	12,700
Uzbekistan, Republic of	5,179	5,700	6,118	6,500	6,600	6,800
Others	109,756	116,028	123,468	121,111	120,039	121,739
Subtotal	555,685	575,412	593,014	584,768	588,434	589,230
United States	32,507	31,823	31,357	31,035	31,188	29,827
World Total	588,192	607,235	624,371	615,803	619,622	619,057
Ending Stocks						
Australia	5,444	6,782	9,618	4,224	3,199	3,699
Canada	5,985	7,922	9,638	6,849	4,074	4,074
China, Peoples Republic of	43,293	38,819	34,890	35,957	39,107	38,907
Egypt	1,744	2,861	4,006	4,120	3,330	3,285
EU-27	11,514	27,496	23,391	13,955	11,140	12,136
India	6,900	4,100	2,000	4,500	6,410	6,410
Pakistan	1,382	2,248	3,264	2,919	3,519	3,519
Others	40,709	45,829	45,338	39,908	33,041	33,868
Subtotal	116,971	136,057	132,145	112,432	103,820	105,898
United States	14,872	14,699	15,545	12,414	6,583	6,583
World Total	131,843	150,756	147,690	124,846	110,403	112,481

Regional Wheat Imports, Production, Consumption, and Stocks

Thousand Metric Tons

	2003/04	2004/05	2005/06	2006/07	Mar 2007/08	Apr 2007/08
TY Imports						
North America	5,634	5,915	6,145	7,326	6,775	6,775
Central America	1,500	1,510	1,514	1,446	1,400	1,400
Caribbean	1,839	2,034	1,926	1,825	1,745	1,795
South America	11,207	10,826	12,687	13,925	12,965	12,965
European Union	7,374	7,061	6,758	5,137	6,500	6,500
Other Europe	1,457	1,464	1,457	1,468	1,500	1,500
Former Soviet Union - 12	7,226	4,795	5,147	5,934	5,565	5,580
Middle East	8,813	10,202	13,220	12,167	10,295	10,370
North Africa	15,480	18,407	18,560	16,297	17,800	18,200
Sub-Saharan Africa	9,712	12,092	13,003	11,431	10,740	10,590
East Asia	15,320	18,357	12,830	11,949	10,950	10,950
South Asia	3,008	4,881	4,374	10,005	6,230	6,230
Southeast Asia	11,177	11,429	11,923	12,347	11,825	11,825
Oceania	648	745	751	811	720	720
Total	100,395	109,718	110,295	112,068	105,010	105,400
Production						
North America	89,563	85,954	86,048	77,821	79,697	79,831
Central America	1	1	1	1	1	1
Caribbean	0	0	0	0	0	0
South America	23,647	25,176	22,411	20,070	22,366	22,366
European Union	110,578	146,886	132,356	124,800	119,646	119,646
Other Europe	3,864	5,438	4,201	4,331	4,285	4,379
Former Soviet Union - 12	60,911	86,531	91,923	85,977	93,491	93,691
Middle East	40,454	42,618	42,817	41,617	39,590	39,655
North Africa	16,285	17,166	15,178	18,526	13,780	13,818
Sub-Saharan Africa	4,497	4,919	5,700	6,961	6,714	7,914
East Asia	87,730	93,179	98,647	105,713	107,330	107,330
South Asia	90,086	95,989	96,407	96,060	104,520	104,520
Southeast Asia	107	130	150	164	164	164
Oceania	26,453	22,161	25,466	10,918	13,377	13,377
Total	554,176	626,148	621,305	592,959	604,961	606,692
Domestic Consumption						
North America	45,593	46,055	45,776	45,973	46,638	45,377
Central America	1,354	1,410	1,462	1,372	1,301	1,301
Caribbean	1,839	2,034	1,926	1,819	1,745	1,795
South America	23,240	23,407	24,633	24,156	24,430	24,430
European Union	115,095	123,220	127,525	125,500	119,965	118,965
Other Europe	5,490	6,018	5,897	5,450	5,415	5,415
Former Soviet Union - 12	65,875	73,181	75,736	73,637	76,615	76,815
Middle East	47,737	49,530	50,203	51,129	49,846	50,026
North Africa	30,082	32,308	33,514	33,895	34,875	35,175
Sub-Saharan Africa	14,573	16,519	18,210	17,858	18,093	19,143
East Asia	116,429	114,077	113,584	113,035	112,110	112,110
South Asia	96,011	100,381	100,886	103,556	107,450	107,450
Southeast Asia	10,438	11,029	11,665	11,713	11,989	11,909
Oceania	6,800	6,822	7,341	8,349	7,120	7,120
Total	580,556	605,991	618,358	617,442	617,592	617,031
Ending Stocks						
North America	21,600	22,997	25,495	19,677	11,171	11,205
Central America	185	185	185	150	150	150
Caribbean	20	20	20	20	20	20
South America	2,982	2,847	3,261	2,117	2,623	2,423
European Union	11,514	27,496	23,391	13,955	11,140	12,136
Other Europe	1,155	1,773	1,361	1,146	856	925
Former Soviet Union - 12	10,845	13,464	13,671	9,595	9,391	10,406
Middle East	12,539	12,637	13,398	12,361	9,764	9,510
North Africa	7,467	10,520	10,511	11,183	7,728	7,866
Sub-Saharan Africa	1,111	1,243	1,399	1,589	725	725
East Asia	45,563	41,218	37,109	38,351	41,426	41,226
South Asia	9,200	7,350	6,095	7,996	10,246	10,246
Southeast Asia	2,030	2,052	2,001	2,280	1,780	1,760
Oceania	5,632	6,954	9,793	4,426	3,383	3,883
Total	131,843	150,756	147,690	124,846	110,403	112,481

2003/04	2004/05	2005/06	2006/07	Mar 2007/08	Apr 2007/08
----------------	----------------	----------------	----------------	------------------------	------------------------

NOTES: Regional definitions appear on last page of this circular. Imports are reported on a trade year basis. All other data are reported using local marketing years.

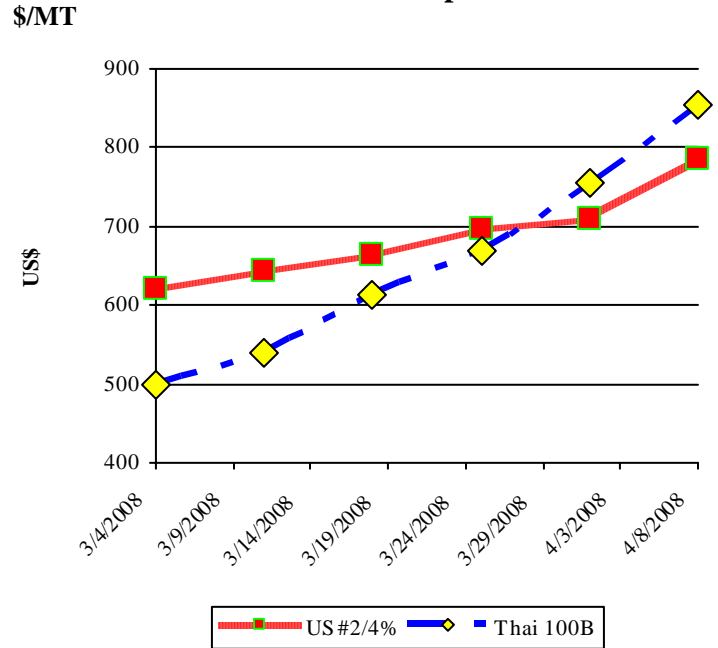
RICE: WORLD MARKETS AND TRADE

PRICES:

International: Thai quotes jumped \$356, or more than 70 percent, from last month to \$855 FOB, as exportable supplies remain tight and worldwide concerns over food security drive up export prices. Vietnam is not quoting prices due to an export ban, which leaves Thailand and the United States as virtually the only game in town.

Domestic: U.S. #2/4 long grain milled rice quotes are up from last month to \$787 per ton, FOB. Thai quotes are \$68 above U.S. quotes compared to the same time last year when Thai quotes were \$93 below. California medium grain #1/4 prices are up \$125 per ton from last month to \$750 per ton, FOB.

**U.S. & Thai Nominal Rice Quotes Surge –
March to April 2008**



TRADE CHANGES FOR 2008

Selected Exporters

- **Burma** is doubled to 400,000 tons as high world prices draw more supplies onto the market.
- **Cambodia's** exports are gutted by 300,000 tons to 150,000 due to an export ban.
- **China** is dropped 300,000 tons to 1.0 million with the imposition of export taxes and concerns over food price inflation.
- **Egypt, India and Vietnam** are lowered due to export bans.

Selected Importers

The imports for **Brazil, Cambodia, China, Cuba, Ghana, Mozambique, Nigeria, and Vietnam** are decreased because of high world prices and tight supplies.

- **Indonesia** is lowered 500,000 tons to 1.1 million as increased domestic production reduces the need for imports.
- **Iraq** is reduced 200,000 tons to 900,000 on account of the slow pace of purchases.

Grain: World Markets and Trade, April 2008

World Rice Trade
January/December Year, Thousand Metric Tons

	2003/04	2004/05	2005/06	2006/07	2007/08 Mar	2007/08 Apr
TY Exports						
Argentina	249	345	487	436	500	500
Brazil	37	272	291	201	200	275
Burma, Union of	130	190	47	31	200	400
Cambodia	300	200	350	450	450	150
China, Peoples Republic of	880	656	1,216	1,340	1,300	1,000
Egypt	826	1,095	958	1,209	950	800
EU-27	187	201	144	139	150	150
Guyana	243	182	170	230	180	180
India	3,172	4,687	4,537	5,000	3,500	3,000
Japan	200	200	200	200	200	200
Korea, Republic of	105	400	91	160	150	150
Pakistan	1,986	3,032	3,579	2,400	2,900	2,900
Thailand	10,137	7,274	7,376	9,500	9,000	9,000
Uruguay	804	762	812	735	800	800
Vietnam	4,295	5,174	4,705	4,522	5,000	4,000
Others	543	694	1,134	702	395	480
Subtotal	24,094	25,364	26,097	27,255	25,875	23,985
United States	3,090	3,862	3,306	3,044	3,500	3,500
World Total	27,184	29,226	29,403	30,299	29,375	27,485
TY Imports						
Bangladesh	801	785	531	1,500	1,000	1,000
Brazil	762	547	691	684	800	700
Cameroon	275	350	309	300	300	300
Canada	285	321	333	335	365	365
China, Peoples Republic of	1,122	609	654	472	600	300
Cote d'Ivoire	867	850	750	950	650	650
Cuba	639	736	594	574	600	500
EU-27	1,184	1,058	1,083	1,150	1,100	1,100
Ghana	425	450	441	340	480	350
Haiti	269	328	399	300	300	300
Hong Kong	309	315	309	315	315	315
Indonesia	650	500	539	2,000	1,600	1,100
Iran	950	983	1,251	900	900	900
Iraq	889	786	1,306	613	1,100	900
Japan	706	787	681	700	700	700
Korea, Democratic	366	191	41	400	400	400
Malaysia	700	751	886	800	700	700
Mexico	521	553	586	609	625	650
Nigeria	1,369	1,777	1,600	1,700	1,600	1,500
Philippines	1,100	1,890	1,791	1,900	1,900	1,900
Saudi Arabia	1,500	1,357	1,448	960	1,015	1,015
Senegal	850	518	1,113	800	700	700
Singapore	346	375	375	375	375	375
South Africa, Republic of	818	850	764	817	925	850
Syria	200	232	250	250	285	285
Others	7,164	7,624	7,207	7,264	7,559	6,809
Subtotal	25,067	25,523	25,932	27,008	26,894	24,664
Unaccounted	1,640	3,284	2,838	2,592	1,756	2,096
United States	477	419	633	699	725	725
World Total	27,184	29,226	29,403	30,299	29,375	27,485

TY=Trade Year, see Endnotes.

Note about dates: 2006/07 is calendar year 2007, 2005/06 is calendar year 2006, and so on.

World Rice Production, Consumption, and Stocks
Local Marketing Years, Thousand Metric Tons

	2003/04	2004/05	2005/06	2006/07	2007/08 Mar	2007/08 Apr
Milled Production						
Bangladesh	26,152	25,600	28,758	29,000	28,400	28,400
Brazil	8,709	8,996	7,874	7,700	7,990	8,200
Burma, Union of	10,730	9,570	10,440	10,600	10,660	11,300
Cambodia	2,960	2,630	3,771	3,946	4,075	4,075
China, Peoples Republic of	112,462	125,363	126,414	127,800	129,500	129,500
Egypt	3,900	4,128	4,135	4,385	4,380	4,387
India	88,530	83,130	91,790	93,350	94,000	94,000
Indonesia	35,024	34,830	34,959	35,300	34,000	35,500
Japan	7,091	7,944	8,257	7,786	7,930	7,930
Korea, Republic of	4,451	5,000	4,768	4,680	4,408	4,408
Nigeria	2,200	2,300	2,700	2,900	3,000	3,000
Pakistan	4,848	5,025	5,547	5,200	5,400	5,400
Philippines	9,200	9,425	9,821	10,085	10,400	10,400
Thailand	18,011	17,360	18,200	18,250	18,600	18,500
Vietnam	22,082	22,716	22,772	22,894	23,261	23,261
Others	28,929	29,296	30,742	30,446	30,619	30,713
Subtotal	385,279	393,313	410,948	414,322	416,623	418,974
United States	6,420	7,462	7,113	6,239	6,314	6,314
World Total	391,699	400,775	418,061	420,561	422,937	425,288
Total Consumption						
Bangladesh	26,700	26,900	29,000	29,764	30,100	30,100
Brazil	8,687	8,860	8,974	8,719	8,900	8,700
Burma, Union of	10,200	10,300	10,400	10,670	10,700	11,180
Cambodia	2,725	2,780	3,571	3,646	3,775	3,975
China, Peoples Republic of	132,100	130,300	128,000	127,800	127,000	127,000
Egypt	3,225	3,250	3,343	3,268	3,400	3,385
India	85,630	80,861	85,088	86,940	89,930	90,430
Indonesia	36,000	35,850	35,739	35,900	36,150	36,350
Iran	2,950	3,000	3,050	3,100	3,150	3,150
Japan	8,357	8,300	8,250	8,250	8,150	8,150
Korea, Republic of	4,512	4,951	4,766	4,784	4,757	4,757
Nigeria	4,000	4,250	4,350	4,450	4,700	4,700
Philippines	10,250	10,400	10,722	11,551	12,060	12,000
Thailand	9,470	9,480	9,544	9,870	9,600	9,600
Vietnam	18,230	17,595	18,392	18,747	18,717	19,717
Others	43,861	44,503	44,731	46,420	46,017	45,362
Subtotal	409,515	404,458	412,191	416,863	418,537	420,221
United States	3,656	3,935	3,838	4,054	3,990	3,990
World Total	413,171	408,393	416,029	420,917	422,527	424,211
Ending Stocks						
China, Peoples Republic of	43,915	38,931	36,783	35,915	37,715	37,715
EU-27	974	1,138	1,183	1,271	1,152	1,152
India	10,800	8,500	10,520	11,430	12,000	12,000
Indonesia	4,018	3,448	3,207	4,607	2,307	4,857
Japan	1,700	1,919	2,395	2,406	2,686	2,686
Philippines	4,047	4,572	5,293	5,627	5,767	5,827
Thailand	1,706	2,312	3,594	2,479	2,486	2,386
Others	14,133	12,405	12,123	11,111	10,362	9,875
Subtotal	81,293	73,225	75,098	74,846	74,475	76,498
United States	761	1,211	1,370	1,266	691	691
World Total	82,054	74,436	76,468	76,112	75,166	77,189

Note: All data are reported on a milled basis.

Regional Rice Imports, Production, Consumption, and Stocks
Thousand Metric Tons

	2003/04	2004/05	2005/06	2006/07	Mar 2007/08	Apr 2007/08
TY Imports						
North America	1,283	1,293	1,552	1,643	1,715	1,740
Central America	463	531	530	527	605	605
Caribbean	1,084	1,213	1,197	1,015	1,055	955
South America	1,111	966	1,097	1,080	1,250	1,130
European Union	1,184	1,058	1,083	1,150	1,100	1,100
Other Europe	125	130	130	120	130	130
Former Soviet Union - 12	526	526	504	426	436	436
Middle East	4,510	4,492	5,311	3,812	4,280	4,080
North Africa	225	261	265	375	225	245
Sub-Saharan Africa	7,524	7,795	7,665	7,456	7,345	6,765
East Asia	2,849	2,147	1,981	2,253	2,446	2,146
South Asia	1,220	1,038	834	1,760	1,365	1,290
Southeast Asia	3,202	4,236	4,147	5,765	5,267	4,367
Oceania	238	256	269	325	400	400
Total	25,544	25,942	26,565	27,707	27,619	25,389
Production						
North America	6,620	7,657	7,294	6,464	6,514	6,514
Central America	612	509	579	558	558	558
Caribbean	928	761	692	670	661	661
South America	14,667	15,346	14,244	13,871	14,605	14,825
European Union	1,741	1,880	1,731	1,688	1,681	1,681
Other Europe	8	10	10	10	10	10
Former Soviet Union - 12	846	774	863	947	967	967
Middle East	2,264	2,145	2,372	2,538	2,778	2,738
North Africa	3,941	4,169	4,176	4,426	4,421	4,428
Sub-Saharan Africa	7,314	7,758	8,635	9,104	9,230	9,182
East Asia	126,888	141,118	142,492	143,256	144,332	144,469
South Asia	124,572	118,898	131,313	132,857	133,100	133,135
Southeast Asia	100,903	99,465	102,944	104,057	104,067	106,107
Oceania	395	285	716	115	13	13
Total	391,699	400,775	418,061	420,561	422,937	425,288
Domestic Consumption						
North America	4,666	5,006	4,946	5,221	5,155	5,139
Central America	1,009	1,066	1,080	1,112	1,107	1,107
Caribbean	1,951	1,990	1,732	1,777	1,749	1,649
South America	13,535	13,837	14,097	13,946	14,243	14,040
European Union	2,627	2,631	2,651	2,752	2,750	2,750
Other Europe	118	125	130	135	135	135
Former Soviet Union - 12	1,434	1,354	1,352	1,383	1,373	1,373
Middle East	6,574	6,600	7,271	6,811	7,232	6,992
North Africa	3,491	3,552	3,621	3,584	3,666	3,651
Sub-Saharan Africa	15,053	15,619	16,018	16,455	16,580	16,112
East Asia	148,514	146,982	144,371	144,672	143,245	143,382
South Asia	120,341	115,823	121,455	124,944	128,030	128,565
Southeast Asia	90,710	90,390	92,484	94,616	95,356	97,176
Oceania	530	540	550	525	475	475
Total	410,553	405,515	411,758	417,933	421,096	422,546
Ending Stocks						
North America	940	1,385	1,529	1,412	888	891
Central America	456	387	361	384	401	401
Caribbean	141	165	238	206	173	173
South America	3,010	3,668	2,929	2,326	2,172	2,261
European Union	974	1,138	1,183	1,271	1,152	1,152
Other Europe	40	50	60	65	60	60
Former Soviet Union - 12	191	117	104	69	69	69
Middle East	1,389	1,497	1,823	1,779	1,813	1,564
North Africa	719	502	364	372	427	594
Sub-Saharan Africa	2,056	1,494	1,247	1,055	1,019	962
East Asia	46,764	41,916	40,329	39,421	41,284	41,284
South Asia	12,189	9,038	11,317	12,392	12,827	12,827
Southeast Asia	12,675	12,648	14,469	15,168	12,856	14,916
Oceania	510	431	515	192	25	35
Total	82,054	74,436	76,468	76,112	75,166	77,189

2003/04	2004/05	2005/06	2006/07	Mar 2007/08	Apr 2007/08
----------------	----------------	----------------	----------------	------------------------	------------------------

NOTES: Regional definitions appear on last page of this circular. Imports are reported on a trade year basis. All other data are reported using local marketing years.

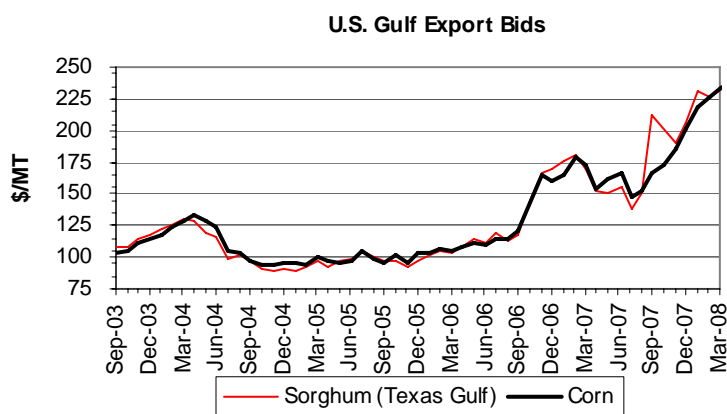
COARSE GRAINS: WORLD MARKETS AND TRADE

MONTHLY HIGHLIGHTS:

This month, U.S. corn exports are boosted another 1.0 million tons to a new record of 63.0 million tons. China continues to be absent from the market and demand from Asia, particularly South Korea, remains firm. These factors have resulted in U.S. sales and shipments remaining strong. For example, the first quarter of calendar year 2008 saw sales 1.8 million tons above last year and shipments 2.6 million tons above last year. At the same time, expectations for EU-27 imports have climbed yet again leaving the United States virtually the only supplier to many markets that might otherwise import from Argentina and Brazil.

PRICES:

Domestic: U.S. corn export prices averaged \$235 per ton in March, up \$9 from February. However, the March 31 release of USDA's *Prospective Plantings* and *Grain Stocks* reports, prices shot up and have continued to do so into the first week of April on expectations of tightened supplies. Sorghum prices averaged \$237 per ton, up \$10 from February. Prices remain firm due to demand from the EU-27.



TRADE CHANGES IN 2007/2008

Selected Exporters

- **United States corn** is raised 1.0 million tons to a new record of 63.0 million.
- **Argentina sorghum** is up 200,000 tons to 1.2 million on expected EU-27 demand.
- **Argentina barley** is up 150,000 tons to 650,000 due to increased old-crop production.
- **Canada barley** jumped 200,000 tons to 2.4 million following high early season purchases from Saudi Arabia and the United States.
- **Canada rye** jumped 25,000 tons to 125,000 on robust demand from Japan.

Selected Importers

- **EU-27 corn** is boosted by 1.0 tons to 11.5 million, the highest in 25 years, based on the pace of import licenses and reports of new-crop sales and shipments from Brazil and Argentina.
- **Egypt corn** is cut by 800,000 tons to 4.2 million because of weak demand arising from lingering cases of Avian Influenza and rising prices affecting feed users.
- **Indonesia corn** is down by 200,000 tons to 600,000. Higher expected production more than offsets increased feed demand.
- **Syria corn** is reduced by 200,000 tons to 1.8 million.
- **EU-27 sorghum** is up 200,000 tons to 4.5 million based on the pace of import licenses and expected shipments from Argentina.
- **Morocco barley** is lowered 200,000 tons to 700,000 because of higher old-crop production.
- **EU-27 rye** is up 25,000 tons to 75,000 following large purchases from Russia.
- **Japan rye** is raised 25,000 tons to 100,000 due to a strong first quarter pace.

World Coarse Grain Trade
October/September Year, Thousand Metric Tons

	2003/04	2004/05	2005/06	2006/07	2007/08 Mar	2007/08 Apr
TY Exports						
Argentina	10,834	14,371	11,243	17,181	16,005	16,355
Australia	6,752	4,996	5,616	2,024	2,635	2,635
Brazil	6,191	1,457	2,826	8,188	10,650	10,650
Canada	3,474	3,217	4,010	3,787	4,800	5,025
EU-27	2,159	5,954	3,649	5,490	4,760	4,760
Kazakhstan, Republic of	635	107	115	614	1,210	1,210
Paraguay	548	386	1,314	2,048	1,600	1,600
Russian Federation	1,767	1,534	1,450	1,836	1,050	1,050
South Africa, Republic of	838	1,553	1,429	456	1,525	1,525
Ukraine	3,811	6,465	7,444	3,941	3,510	3,510
Others	11,291	10,513	7,860	9,343	3,405	3,430
Subtotal	48,300	50,553	46,956	54,908	51,150	51,750
United States	54,078	50,692	61,443	59,210	70,035	71,035
World Total	102,378	101,245	108,399	114,118	121,185	122,785
TY Imports						
Algeria	1,788	2,273	2,138	2,597	2,455	2,455
Brazil	596	745	1,096	1,500	1,205	1,255
Canada	2,081	2,339	2,029	2,285	2,070	2,070
Chile	1,148	1,189	1,663	1,925	2,000	2,000
China, Peoples Republic of	1,533	2,073	2,306	1,156	1,330	1,330
Colombia	2,232	2,516	3,380	3,669	3,725	3,775
Dominican Republic	824	1,031	1,068	1,212	1,000	1,000
Egypt	3,747	5,405	4,418	4,901	5,020	4,220
EU-27	7,699	2,906	2,883	8,738	15,060	16,285
Guatemala	513	641	751	764	800	800
Iran	2,518	3,849	2,887	3,600	3,200	3,200
Israel	2,012	1,700	1,588	1,684	2,115	2,115
Japan	19,982	19,709	19,765	19,668	19,135	19,160
Jordan	771	938	1,234	1,186	1,000	900
Korea, Republic of	8,992	8,715	8,550	8,803	8,870	8,870
Malaysia	2,401	2,406	2,517	2,303	2,500	2,500
Mexico	8,873	8,975	9,930	10,995	11,325	11,325
Morocco	1,326	1,989	1,971	2,005	2,605	2,405
Peru	1,114	1,366	1,548	1,650	1,500	1,500
Saudi Arabia	7,130	7,644	8,578	7,377	7,600	7,600
South Africa, Republic of	612	277	1,008	1,060	1,025	1,025
Syria	1,541	2,281	1,868	1,957	2,300	2,100
Taiwan	5,114	4,757	4,735	4,519	4,450	4,450
Tunisia	883	1,228	1,230	1,519	1,300	1,300
Turkey	1,215	317	115	1,143	1,055	1,055
Others	10,582	10,775	13,037	11,572	10,940	10,880
Subtotal	97,227	98,044	102,293	109,788	115,585	115,575
Unaccounted	2,895	959	3,811	1,724	2,675	4,285
United States	2,256	2,242	2,295	2,606	2,925	2,925
World Total	102,378	101,245	108,399	114,118	121,185	122,785

TY=Trade Year, see Endnotes.

World Coarse Grains Production, Consumption, and Stocks
Local Marketing Years, Thousand Metric Tons

	2003/04	2004/05	2005/06	2006/07	2007/08 Mar	2007/08 Apr
Production						
Argentina	18,596	24,902	19,223	27,538	26,673	26,973
Australia	14,861	11,401	13,537	6,578	9,705	9,905
Brazil	44,881	37,874	44,167	53,184	55,859	55,319
Canada	25,839	25,602	24,968	23,145	27,840	27,840
China, Peoples Republic of	123,953	138,252	147,696	153,503	153,600	153,600
Ethiopia	6,560	7,565	9,085	11,075	10,800	11,930
EU-27	131,714	166,579	146,745	138,321	136,630	136,935
India	37,420	33,560	34,040	32,540	36,030	36,030
Indonesia	6,350	7,200	6,500	6,700	7,000	7,500
Mexico	30,277	28,947	25,833	29,140	29,780	29,780
Nigeria	20,300	23,200	24,700	26,000	24,000	24,000
Russian Federation	30,500	29,600	27,600	30,200	29,325	29,325
South Africa, Republic of	10,363	12,209	7,311	7,760	11,483	11,483
Turkey	10,040	11,045	11,945	10,945	10,045	10,045
Ukraine	15,600	23,000	18,140	19,175	14,585	14,585
Others	113,555	115,481	117,580	124,956	121,775	122,371
Subtotal	640,809	696,417	679,070	700,760	705,130	707,621
United States	275,098	319,417	298,763	280,113	351,062	351,062
World Total	915,907	1,015,834	977,833	980,873	1,056,192	1,058,683
Domestic Consumption						
Argentina	7,407	9,058	9,373	10,023	10,273	10,273
Brazil	38,913	41,558	42,217	43,454	45,384	44,894
Canada	23,339	22,981	22,917	24,454	24,650	24,550
China, Peoples Republic of	138,651	141,172	147,455	152,225	157,514	157,514
Egypt	10,277	12,364	11,201	11,835	12,280	11,480
Ethiopia	6,560	7,565	8,885	10,850	10,800	11,930
EU-27	145,237	152,589	147,541	146,508	152,447	153,707
India	35,650	33,240	33,840	32,070	34,925	34,925
Japan	20,737	19,878	20,092	19,820	19,567	19,592
Mexico	37,332	38,276	37,587	39,505	40,705	40,705
Nigeria	20,250	22,950	24,450	25,750	24,000	24,000
Russian Federation	33,250	29,400	27,700	28,600	29,050	29,050
South Africa, Republic of	9,219	10,305	8,766	9,236	9,673	9,673
Turkey	11,186	11,504	11,452	11,650	11,550	11,550
Ukraine	14,000	15,200	11,990	13,375	12,285	12,315
Others	164,990	169,468	178,048	183,138	185,519	185,736
Subtotal	719,582	737,979	746,113	766,321	782,949	786,092
United States	225,958	240,216	245,075	242,812	280,334	282,747
World Total	945,540	978,195	991,188	1,009,133	1,063,283	1,068,839
Ending Stocks						
Brazil	8,045	4,380	3,167	3,701	6,167	6,031
Canada	4,076	6,319	6,281	3,486	3,946	3,721
China, Peoples Republic of	45,481	37,017	35,808	32,829	29,495	29,495
EU-27	13,012	25,121	22,746	17,860	12,441	12,713
Iran	1,986	3,278	3,867	4,167	2,633	4,467
Mexico	5,767	5,395	3,336	3,775	3,725	4,075
South Africa, Republic of	3,189	3,427	2,439	2,002	2,662	2,662
Others	31,350	35,572	33,543	33,700	27,889	28,518
Subtotal	112,906	120,509	111,187	101,520	88,958	91,682
United States	28,764	58,800	54,767	36,174	39,430	35,856
World Total	141,670	179,309	165,954	137,694	128,388	127,538

Regional Coarse Grains Imports, Production, Consumption, and Stocks
Thousand Metric Tons

	2003/04	2004/05	2005/06	2006/07	Mar 2007/08	Apr 2007/08
TY Imports						
North America	13,210	13,556	14,254	15,886	16,320	16,320
Central America	2,178	2,405	2,803	2,730	2,850	2,850
Caribbean	1,634	1,913	1,969	2,268	2,075	2,075
South America	6,383	6,460	8,750	10,270	9,790	9,890
European Union	7,699	2,906	2,883	8,738	15,060	16,285
Other Europe	817	575	686	810	785	855
Former Soviet Union - 12	1,440	1,080	1,150	898	555	625
Middle East	16,162	17,864	17,586	18,206	18,405	18,105
North Africa	8,275	11,588	10,470	11,597	12,030	11,030
Sub-Saharan Africa	1,666	2,703	3,454	2,220	2,250	2,250
East Asia	35,927	35,666	35,610	34,346	34,035	34,060
South Asia	32	44	33	13	10	10
Southeast Asia	4,046	3,499	4,897	4,411	4,340	4,140
Oceania	14	27	43	1	5	5
Total	99,483	100,286	104,588	112,394	118,510	118,500
Production						
North America	331,214	373,966	349,564	332,398	408,682	408,682
Central America	3,251	2,925	2,923	3,178	3,457	3,457
Caribbean	835	869	784	771	785	785
South America	72,953	72,549	73,291	92,344	94,414	93,954
European Union	131,714	166,579	146,745	138,321	136,630	136,935
Other Europe	9,241	12,757	12,985	12,090	9,602	9,308
Former Soviet Union - 12	55,419	63,030	55,307	58,701	53,912	53,912
Middle East	17,685	18,682	19,713	18,784	17,226	17,981
North Africa	11,757	11,786	9,371	11,256	9,212	9,629
Sub-Saharan Africa	78,416	79,355	82,956	90,278	91,935	93,061
East Asia	126,223	140,518	149,899	155,804	155,774	155,701
South Asia	42,215	39,209	38,429	36,913	40,591	40,491
Southeast Asia	19,512	21,583	21,682	22,810	23,620	24,235
Oceania	15,472	12,026	14,184	7,225	10,352	10,552
Total	915,907	1,015,834	977,833	980,873	1,056,192	1,058,683
Domestic Consumption						
North America	286,629	301,473	305,579	306,771	345,689	348,002
Central America	5,115	5,480	5,550	5,925	6,256	6,256
Caribbean	2,412	2,725	2,784	2,933	2,958	2,958
South America	60,405	65,304	67,889	71,498	74,296	73,686
European Union	145,237	152,589	147,541	146,508	152,447	153,707
Other Europe	10,761	12,132	12,254	11,927	10,760	10,630
Former Soviet Union - 12	56,775	54,700	49,750	51,266	50,372	50,442
Middle East	34,367	34,100	35,967	37,268	37,485	37,579
North Africa	18,746	21,891	20,779	22,095	22,265	21,465
Sub-Saharan Africa	77,279	80,177	85,157	91,373	91,057	92,183
East Asia	175,886	177,178	183,164	187,758	192,765	192,717
South Asia	40,311	38,607	38,697	36,643	39,436	39,336
Southeast Asia	21,788	23,948	25,658	26,470	27,585	27,895
Oceania	7,245	7,420	7,820	6,870	7,585	7,785
Total	942,956	977,724	988,589	1,005,305	1,060,956	1,064,641
Ending Stocks						
North America	38,607	70,514	64,384	43,435	47,101	43,652
Central America	734	593	688	685	731	731
Caribbean	120	177	146	252	154	154
South America	11,868	9,302	7,281	8,290	10,355	10,298
European Union	13,012	25,121	22,746	17,860	12,441	12,713
Other Europe	1,070	1,600	1,598	1,646	1,058	1,014
Former Soviet Union - 12	5,941	7,236	5,490	5,341	4,491	4,491
Middle East	7,042	8,686	9,697	9,683	5,779	7,940
North Africa	2,288	3,392	2,507	3,068	2,036	2,262
Sub-Saharan Africa	5,306	5,317	5,022	5,942	6,075	6,075
East Asia	49,789	41,178	39,711	36,738	33,028	33,032
South Asia	1,575	1,747	966	821	1,261	1,261
Southeast Asia	1,987	2,059	2,532	2,413	2,271	2,308
Oceania	2,331	2,387	3,186	1,520	1,607	1,607
Total	141,670	179,309	165,954	137,694	128,388	127,538

2003/04	2004/05	2005/06	2006/07	Mar 2007/08	Apr 2007/08
----------------	----------------	----------------	----------------	------------------------	------------------------

NOTES: Regional definitions appear on last page of this circular. Imports are reported on a trade year basis. All other data are reported using local marketing years.

World Corn Trade
October/September Year, Thousand Metric Tons

	2003/04	2004/05	2005/06	2006/07	2007/08 Mar	2007/08 Apr
TY Exports						
Argentina	10,439	13,752	10,707	15,693	14,500	14,500
Brazil	5,818	1,431	2,826	8,071	10,500	10,500
Cambodia	200	200	175	250	175	250
Canada	367	244	239	322	400	400
China, Peoples Republic of	7,553	7,589	3,727	5,269	500	500
EU-27	455	678	449	664	300	300
India	1,222	481	497	450	700	700
Paraguay	548	386	1,314	2,048	1,600	1,600
South Africa, Republic of	797	1,517	1,406	431	1,500	1,500
Ukraine	1,238	2,334	2,464	1,027	1,500	1,500
Others	1,615	2,005	2,711	2,597	1,410	1,360
Subtotal	30,252	30,617	26,515	36,822	33,085	33,110
United States	48,809	45,347	56,084	54,150	62,000	63,000
World Total	79,061	75,964	82,599	90,972	95,085	96,110
TY Imports						
Algeria	1,765	2,145	2,061	2,438	2,400	2,400
Brazil	459	481	931	1,204	950	950
Canada	2,033	2,237	1,962	2,226	2,000	2,000
Chile	1,043	1,081	1,587	1,700	1,800	1,800
Colombia	1,999	2,256	3,151	3,341	3,500	3,500
Costa Rica	583	569	687	600	700	700
Dominican Republic	824	1,031	1,068	1,212	1,000	1,000
Egypt	3,743	5,398	4,397	4,826	5,000	4,200
EU-27	5,859	2,469	2,634	7,056	10,500	11,500
Guatemala	513	641	751	764	800	800
Iran	1,857	2,558	2,300	3,300	2,700	2,700
Israel	1,377	1,242	1,128	1,311	1,700	1,700
Japan	16,781	16,485	16,617	16,713	16,300	16,300
Korea, Republic of	8,783	8,638	8,488	8,737	8,800	8,800
Malaysia	2,401	2,406	2,517	2,303	2,500	2,500
Mexico	5,739	5,945	6,787	8,944	9,700	9,700
Morocco	1,183	1,423	1,491	1,600	1,700	1,700
Peru	1,041	1,301	1,467	1,528	1,400	1,400
Saudi Arabia	1,621	1,224	1,472	1,577	2,000	2,000
South Africa, Republic of	495	131	896	996	900	900
Syria	941	1,781	1,256	1,729	2,000	1,800
Taiwan	4,951	4,562	4,533	4,400	4,300	4,300
Tunisia	784	714	624	653	800	800
Turkey	1,023	187	61	1,052	800	800
Vietnam	36	291	475	650	700	700
Others	8,427	8,420	10,161	8,912	8,520	8,220
Subtotal	76,261	75,616	79,502	89,772	93,470	93,170
Unaccounted	2,444	67	2,887	880	1,240	2,565
United States	356	281	210	320	375	375
World Total	79,061	75,964	82,599	90,972	95,085	96,110

TY=Trade Year, see Endnotes.

World Corn Production, Consumption, and Stocks
Local Marketing Years, Thousand Metric Tons

	2003/04	2004/05	2005/06	2006/07	2007/08 Mar	2007/08 Apr
Production						
Argentina	15,000	20,500	15,800	22,500	21,500	21,500
Brazil	42,000	35,000	41,700	51,000	53,000	53,000
Canada	9,587	8,837	9,361	8,990	11,650	11,650
China, Peoples Republic of	115,830	130,290	139,365	145,480	145,000	145,000
Egypt	5,740	5,840	5,932	6,149	5,980	6,174
Ethiopia	3,000	3,400	4,000	5,000	4,800	5,600
EU-27	47,905	66,471	61,158	54,835	47,475	47,721
India	14,980	14,180	14,710	15,100	16,800	16,800
Indonesia	6,350	7,200	6,500	6,700	7,000	7,500
Mexico	21,800	22,050	19,500	22,350	22,500	22,500
Nigeria	5,500	6,500	7,000	7,800	6,500	6,500
Philippines	4,900	5,050	5,884	6,231	6,500	6,500
South Africa, Republic of	9,700	11,716	6,935	7,300	11,000	11,000
Ukraine	6,850	8,800	7,150	6,400	7,400	7,400
Vietnam	2,800	3,757	3,818	4,312	4,560	4,560
Others	59,096	65,792	65,740	67,600	66,414	66,672
Subtotal	371,038	415,383	414,553	437,747	438,079	440,077
United States	256,278	299,914	282,311	267,598	332,092	332,092
World Total	627,316	715,297	696,864	705,345	770,171	772,169
Total Consumption						
Argentina	4,400	5,200	6,200	6,700	6,700	6,700
Brazil	36,300	38,500	39,500	41,000	42,500	42,500
Canada	11,215	10,311	10,837	11,436	12,700	12,700
China, Peoples Republic of	128,400	131,000	137,000	143,000	148,000	148,000
Egypt	9,200	11,300	10,100	10,700	11,200	10,400
Ethiopia	3,000	3,400	4,000	5,000	4,800	5,600
EU-27	55,764	63,200	61,500	61,100	62,100	63,100
India	13,500	13,900	14,200	14,700	15,700	15,700
Indonesia	7,350	7,900	7,900	7,900	7,800	8,100
Japan	17,200	16,500	16,700	16,500	16,500	16,500
Korea, Republic of	8,722	8,666	8,579	8,833	8,900	8,900
Mexico	26,400	27,900	27,900	30,300	32,000	32,000
Nigeria	5,500	6,300	6,800	7,600	6,550	6,550
Philippines	4,950	5,150	5,800	6,300	6,600	6,600
South Africa, Republic of	8,677	9,700	8,200	8,700	9,100	9,100
Others	95,778	103,510	105,150	109,411	112,781	112,301
Subtotal	437,246	463,407	471,827	491,474	505,473	507,888
United States	211,644	224,648	232,063	230,786	266,839	269,506
World Total	648,890	688,055	703,890	722,260	772,312	777,394
Ending Stocks						
Brazil	7,878	4,192	3,015	3,579	5,965	5,829
Canada	1,143	1,802	2,001	1,343	1,893	1,893
China, Peoples Republic of	44,852	36,555	35,255	32,482	29,082	29,082
EU-27	3,046	8,108	9,951	10,078	5,652	5,899
Iran	1,168	1,952	2,347	3,247	1,813	3,647
Mexico	4,461	4,529	2,707	3,484	3,234	3,584
South Africa, Republic of	2,956	3,190	2,308	1,908	2,558	2,558
Others	15,053	18,111	17,558	18,960	17,318	17,900
Subtotal	80,557	78,439	75,142	75,081	67,515	70,392
United States	24,337	53,697	49,968	33,114	36,515	32,578
World Total	104,894	132,136	125,110	108,195	104,030	102,970

Regional Corn Imports, Production, Consumption, and Stocks

Thousand Metric Tons

	2003/04	2004/05	2005/06	2006/07	Mar 2007/08	Apr 2007/08
TY Imports						
North America	8,128	8,463	8,959	11,490	12,075	12,075
Central America	2,178	2,401	2,803	2,730	2,850	2,850
Caribbean	1,634	1,913	1,969	2,268	2,075	2,075
South America	5,805	5,738	8,144	9,209	8,965	8,965
European Union	5,859	2,469	2,634	7,056	10,500	11,500
Other Europe	544	422	410	462	440	440
Former Soviet Union - 12	677	559	699	482	225	225
Middle East	7,901	8,039	7,381	10,200	10,425	10,125
North Africa	7,673	10,112	9,044	10,017	10,450	9,650
Sub-Saharan Africa	1,334	2,147	2,769	1,700	1,745	1,745
East Asia	30,823	30,099	29,954	30,066	29,750	29,750
South Asia	32	40	33	10	10	10
Southeast Asia	4,021	3,492	4,890	4,402	4,335	4,135
Oceania	8	3	23	0	0	0
Total	76,617	75,897	79,712	90,092	93,845	93,545
Production						
North America	287,665	330,801	311,172	298,938	366,242	366,242
Central America	2,919	2,595	2,616	2,852	3,131	3,131
Caribbean	707	741	656	643	657	657
South America	64,550	63,182	65,468	83,024	84,291	84,141
European Union	47,905	66,471	61,158	54,835	47,475	47,721
Other Europe	7,110	10,199	10,583	9,725	7,235	6,989
Former Soviet Union - 12	11,580	15,424	13,289	12,849	13,790	13,790
Middle East	4,696	5,656	6,439	5,183	4,922	5,518
North Africa	5,942	6,042	6,134	6,351	6,182	6,376
Sub-Saharan Africa	38,138	41,512	38,351	42,418	45,711	46,507
East Asia	117,657	132,081	141,106	147,333	146,693	146,620
South Asia	18,657	18,781	17,895	18,210	19,920	19,920
Southeast Asia	19,240	21,330	21,445	22,565	23,350	23,985
Oceania	550	482	552	419	572	572
Total	627,316	715,297	696,864	705,345	770,171	772,169
Domestic Consumption						
North America	249,259	262,859	270,800	272,522	311,539	314,206
Central America	4,780	5,125	5,240	5,600	5,925	5,925
Caribbean	2,284	2,597	2,656	2,805	2,830	2,830
South America	52,455	55,883	59,599	63,215	65,290	65,190
European Union	55,764	63,200	61,500	61,100	62,100	63,100
Other Europe	8,320	9,474	9,576	9,227	8,075	7,925
Former Soviet Union - 12	11,063	12,749	11,933	12,125	12,275	12,275
Middle East	12,460	12,802	13,226	14,103	15,781	15,603
North Africa	13,298	15,702	14,871	16,050	16,850	16,050
Sub-Saharan Africa	37,722	41,183	40,420	43,816	43,800	44,596
East Asia	161,488	163,073	168,788	174,758	179,675	179,602
South Asia	17,043	18,218	17,853	18,010	18,770	18,770
Southeast Asia	21,509	23,710	25,422	26,225	27,335	27,660
Oceania	555	510	545	410	525	525
Total	648,000	687,085	702,429	719,966	770,770	774,257
Ending Stocks						
North America	29,941	60,028	54,676	37,941	41,642	38,055
Central America	692	577	671	667	718	718
Caribbean	120	177	146	252	154	154
South America	10,802	8,318	6,704	7,535	9,533	9,531
European Union	3,046	8,108	9,951	10,078	5,652	5,899
Other Europe	775	1,254	1,267	1,301	691	645
Former Soviet Union - 12	1,338	2,138	1,651	1,723	1,883	1,883
Middle East	2,267	3,025	3,451	4,490	2,467	4,530
North Africa	805	1,061	1,314	1,626	1,399	1,602
Sub-Saharan Africa	3,861	4,487	3,789	3,966	4,672	4,672
East Asia	48,345	39,863	38,352	35,772	32,040	32,040
South Asia	880	1,033	587	397	857	857
Southeast Asia	1,983	2,036	2,515	2,407	2,245	2,307
Oceania	39	31	36	40	77	77
Total	104,894	132,136	125,110	108,195	104,030	102,970

2003/04	2004/05	2005/06	2006/07	Mar 2007/08	Apr 2007/08
----------------	----------------	----------------	----------------	------------------------	------------------------

NOTES: Regional definitions appear on last page of this circular. Imports are reported on a trade year basis. All other data are reported using local marketing years.

World Barley Trade
October/September Year, Thousand Metric Tons

	2003/04	2004/05	2005/06	2006/07	2007/08 Mar	2007/08 Apr
TY Exports						
Argentina	167	338	309	537	500	650
Australia	6,104	4,481	5,231	1,927	2,300	2,300
Canada	1,937	1,476	1,876	1,337	2,200	2,400
China, Peoples Republic of	2	0	3	0	100	100
EU-27	986	4,240	2,587	4,389	4,200	4,200
Kazakhstan, Republic of	613	100	100	600	1,200	1,200
Russian Federation	1,736	1,488	1,397	1,691	1,000	1,000
Serbia	nr	nr	nr	5	5	5
Syria	320	50	50	50	50	50
Ukraine	2,557	3,992	4,926	2,910	2,000	2,000
Uruguay	12	20	37	200	100	100
Others	6	30	555	250	0	0
Subtotal	14,440	16,215	17,071	13,896	13,655	14,005
United States	384	771	357	528	1,000	1,000
World Total	14,824	16,986	17,428	14,424	14,655	15,005
TY Imports						
Brazil	128	182	153	291	250	300
China, Peoples Republic of	1,519	2,049	2,217	1,127	1,200	1,200
Colombia	181	234	198	243	200	250
EU-27	654	212	168	167	200	200
Iran	661	1,291	587	300	500	500
Israel	508	313	314	224	250	250
Japan	1,359	1,522	1,417	1,359	1,350	1,350
Jordan	400	607	811	804	500	500
Kuwait	62	214	203	200	200	200
Morocco	143	565	444	400	900	700
Russian Federation	438	266	188	200	200	200
Saudi Arabia	5,508	6,420	7,106	5,800	5,600	5,600
Syria	600	500	612	228	300	300
Tunisia	99	514	606	866	500	500
Turkey	171	69	52	57	250	250
Others	1,452	1,341	1,568	1,405	1,185	1,325
Subtotal	13,883	16,299	16,644	13,671	13,585	13,625
Unaccounted	444	530	660	399	620	930
United States	497	157	124	354	450	450
World Total	14,824	16,986	17,428	14,424	14,655	15,005

TY=Trade Year, see Endnotes.

World Barley Production, Consumption, and Stocks
Local Marketing Years, Thousand Metric Tons

	2003/04	2004/05	2005/06	2006/07	2007/08 Mar	2007/08 Apr
Production						
Argentina	1,000	886	800	1,265	1,200	1,500
Australia	10,387	7,740	9,483	4,176	5,900	5,900
Belarus	1,800	2,000	1,800	1,350	1,700	1,700
Canada	12,164	12,557	11,678	9,573	11,000	11,000
China, Peoples Republic of	2,717	3,222	3,400	3,565	3,600	3,600
Ethiopia	1,410	1,575	1,785	2,125	2,100	2,500
EU-27	55,818	64,085	54,752	56,151	57,760	57,758
India	1,410	1,300	1,200	1,220	1,330	1,330
Iran	2,908	2,940	2,857	3,000	3,000	3,000
Iraq	861	805	754	920	800	800
Kazakhstan, Republic of	2,100	1,500	1,500	1,900	2,500	2,500
Mexico	1,082	932	753	900	900	900
Russian Federation	18,000	17,200	15,800	18,100	15,650	15,650
Turkey	6,900	7,400	7,600	7,500	6,500	6,500
Ukraine	6,850	11,100	9,000	11,350	6,000	6,000
Others	10,819	11,169	8,736	10,258	8,702	8,662
Subtotal	136,226	146,411	131,898	133,353	128,642	129,300
United States	6,059	6,091	4,613	3,923	4,612	4,612
World Total	142,285	152,502	136,511	137,276	133,254	133,912
Total Consumption						
Australia	3,050	3,450	3,450	3,750	3,650	3,650
Belarus	1,750	1,900	1,975	1,500	1,700	1,700
Canada	9,729	10,138	9,611	10,196	9,100	9,000
China, Peoples Republic of	4,700	5,350	5,550	4,800	4,700	4,700
Ethiopia	1,410	1,575	1,785	2,125	2,100	2,500
EU-27	58,007	54,580	54,050	55,850	54,397	54,397
India	1,400	1,300	1,200	1,220	1,330	1,330
Iran	3,108	3,540	3,757	4,000	3,600	3,600
Japan	1,630	1,650	1,650	1,650	1,580	1,580
Kazakhstan, Republic of	1,950	1,550	1,400	1,374	1,300	1,325
Morocco	2,300	2,700	2,450	2,500	2,100	2,100
Russian Federation	18,600	16,500	15,500	16,400	15,300	15,300
Saudi Arabia	7,010	5,410	6,510	6,810	6,610	6,610
Turkey	7,100	7,300	7,300	7,300	7,000	7,000
Ukraine	6,200	6,400	4,900	6,500	5,500	5,530
Others	12,743	13,974	14,251	14,050	13,895	13,915
Subtotal	142,041	136,559	136,276	140,706	133,977	134,653
United States	4,990	5,672	4,570	4,596	4,463	4,463
World Total	147,031	142,231	140,846	145,302	138,440	139,116
Ending Stocks						
Australia	1,887	1,916	2,682	1,208	1,158	1,158
Canada	2,102	3,435	3,289	1,485	1,235	1,035
EU-27	4,524	11,063	8,535	5,580	4,645	4,641
Iran	818	1,326	1,520	920	820	820
Russian Federation	2,227	2,110	873	1,226	776	776
Saudi Arabia	2,399	2,672	3,213	2,903	1,693	1,693
Ukraine	596	991	1,193	960	480	480
Others	5,701	6,835	5,154	5,001	3,502	3,763
Subtotal	20,254	30,348	26,459	19,283	14,309	14,366
United States	2,619	2,796	2,350	1,500	1,104	1,213
World Total	22,873	33,144	28,809	20,783	15,413	15,579

Regional Barley Imports, Production, Consumption, and Stocks
Thousand Metric Tons

	2003/04	2004/05	2005/06	2006/07	Mar 2007/08	Apr 2007/08
TY Imports						
North America	567	291	201	475	575	575
South America	440	538	506	778	640	740
European Union	654	212	168	167	200	200
Other Europe	178	102	161	215	130	200
Former Soviet Union - 12	706	327	380	355	305	375
Middle East	8,112	9,619	10,057	7,823	7,810	7,810
North Africa	601	1,473	1,386	1,566	1,570	1,370
Sub-Saharan Africa	69	102	81	51	100	100
East Asia	3,047	3,768	3,808	2,594	2,700	2,700
South Asia	0	0	0	0	0	0
Oceania	6	24	20	1	5	5
Total	14,380	16,456	16,768	14,025	14,035	14,075
Production						
North America	19,305	19,580	17,044	14,396	16,512	16,512
South America	2,039	2,065	1,827	2,287	2,405	2,590
European Union	55,818	64,085	54,752	56,151	57,760	57,758
Other Europe	1,405	1,769	1,604	1,572	1,567	1,519
Former Soviet Union - 12	29,629	33,206	29,450	33,951	27,067	27,067
Middle East	11,829	11,742	12,060	12,195	11,080	11,080
North Africa	4,795	4,719	2,212	3,880	2,005	2,228
Sub-Saharan Africa	1,764	1,871	2,152	2,511	2,455	2,855
East Asia	3,136	3,678	3,848	3,999	4,055	4,055
South Asia	1,800	1,667	1,679	1,758	2,048	1,948
Oceania	10,765	8,120	9,883	4,576	6,300	6,300
Total	142,285	152,502	136,511	137,276	133,254	133,912
Domestic Consumption						
North America	15,669	16,760	15,131	15,762	14,538	14,438
South America	2,166	2,317	2,178	2,282	2,545	2,530
European Union	58,007	54,580	54,050	55,850	54,397	54,397
Other Europe	1,600	1,815	1,761	1,771	1,670	1,690
Former Soviet Union - 12	29,502	27,591	25,189	27,020	25,122	25,192
Middle East	20,573	19,802	21,374	21,600	20,310	20,410
North Africa	4,427	5,164	4,843	5,010	4,380	4,380
Sub-Saharan Africa	1,774	1,986	2,220	2,575	2,550	2,950
East Asia	6,719	7,457	7,634	6,818	6,690	6,690
South Asia	1,790	1,667	1,679	1,758	2,048	1,948
Oceania	3,450	3,850	3,850	4,175	4,075	4,075
Total	145,677	142,989	139,909	144,621	138,325	138,700
Ending Stocks						
North America	4,921	6,470	5,712	3,055	2,409	2,318
South America	404	331	163	276	176	326
European Union	4,524	11,063	8,535	5,580	4,645	4,641
Other Europe	242	295	283	294	316	318
Former Soviet Union - 12	3,727	4,170	3,036	3,063	2,113	2,113
Middle East	4,732	5,625	6,210	5,132	3,276	3,362
North Africa	1,442	2,291	1,153	1,402	597	620
Sub-Saharan Africa	58	45	58	45	50	50
East Asia	850	839	858	633	598	598
South Asia	34	34	34	34	34	34
Oceania	1,939	1,981	2,767	1,269	1,199	1,199
Total	22,873	33,144	28,809	20,783	15,413	15,579

NOTES: Regional definitions appear on last page of this circular. Imports are reported on a trade year basis. All other data are reported using local marketing years.

World Sorghum Trade
October/September Year, Thousand Metric Tons

	2003/04	2004/05	2005/06	2006/07	2007/08 Mar	2007/08 Apr
TY Exports						
Argentina	228	279	226	949	1,000	1,200
Australia	425	370	190	17	250	250
Brazil	371	24	0	115	150	150
China, Peoples Republic of	168	28	26	144	150	150
India	42	24	4	25	25	25
Nigeria	50	50	50	50	50	50
South Africa, Republic of	41	36	23	25	25	25
Others	36	14	16	26	40	40
Subtotal	1,361	825	535	1,351	1,690	1,890
United States	4,845	4,541	4,961	4,497	7,000	7,000
World Total	6,206	5,366	5,496	5,848	8,690	8,890
TY Imports						
Chile	62	71	43	156	150	150
Eritrea	55	81	25	25	30	30
EU-27	1,139	218	77	1,474	4,300	4,500
Israel	104	34	44	78	150	150
Japan	1,434	1,374	1,393	1,276	1,350	1,350
Mexico	3,002	2,931	3,029	1,914	1,500	1,500
Niger	50	50	50	50	50	50
Norway	24	0	0	0	100	100
Sudan	15	160	211	300	300	300
Taiwan	61	61	69	64	50	50
Others	211	238	391	196	35	35
Subtotal	6,157	5,218	5,332	5,533	8,015	8,215
Unaccounted	49	147	164	313	675	675
United States	0	1	0	2	0	0
World Total	6,206	5,366	5,496	5,848	8,690	8,890

TY=Trade Year, see Endnotes.

World Sorghum Production, Consumption, and Stocks
Local Marketing Years, Thousand Metric Tons

	2003/04	2004/05	2005/06	2006/07	2007/08 Mar	2007/08 Apr
Production						
Argentina	2,200	2,900	2,200	3,300	3,500	3,500
Australia	2,009	2,011	1,929	1,367	2,500	2,700
Brazil	2,103	2,051	1,543	1,500	2,000	1,575
Burkina	1,520	1,400	1,837	1,800	1,800	1,800
China, Peoples Republic of	2,865	2,328	2,546	2,098	2,600	2,600
Egypt	900	900	900	900	900	900
Ethiopia	1,700	2,150	2,800	3,325	3,300	3,230
EU-27	385	499	489	558	574	582
India	6,680	7,240	7,630	7,150	7,300	7,300
Mexico	7,300	5,890	5,500	5,810	6,300	6,300
Niger	720	500	750	800	800	800
Nigeria	9,000	10,000	10,500	10,500	10,000	10,000
Sudan	5,190	2,700	4,275	5,200	4,500	4,500
Tanzania, United Republic	500	820	890	850	900	900
Uganda	420	400	450	490	490	490
Others	4,340	4,234	4,167	4,526	4,337	4,427
Subtotal	47,832	46,023	48,406	50,174	51,801	51,604
United States	10,446	11,523	9,981	7,050	12,827	12,827
World Total	58,278	57,546	58,387	57,224	64,628	64,431
Total Consumption						
Argentina	2,000	2,600	2,200	2,200	2,300	2,300
Australia	1,405	1,755	1,895	1,305	2,055	2,255
Brazil	1,650	2,100	1,593	1,410	1,775	1,350
Burkina	1,520	1,400	1,837	1,800	1,800	1,800
China, Peoples Republic of	3,000	2,400	2,500	2,050	2,400	2,400
Egypt	900	900	900	900	900	900
Ethiopia	1,700	2,150	2,600	3,100	3,300	3,230
EU-27	1,971	521	683	1,120	5,370	5,570
India	6,700	7,200	7,540	7,050	7,295	7,295
Japan	1,500	1,400	1,400	1,350	1,350	1,350
Mexico	9,800	9,300	8,600	8,060	7,600	7,600
Niger	750	550	750	825	925	925
Nigeria	8,950	9,950	10,450	10,450	9,950	9,950
Sudan	4,500	3,500	4,250	5,000	5,300	5,300
Tanzania, United Republic	500	820	890	850	900	900
Others	5,016	5,022	5,152	5,368	5,338	5,446
Subtotal	51,882	51,667	53,402	53,649	59,186	59,199
United States	5,638	6,255	4,823	3,912	5,334	5,080
World Total	57,520	57,922	58,225	57,561	64,520	64,279
Ending Stocks						
Australia	63	114	23	43	188	188
Brazil	124	133	95	75	155	155
Ethiopia	0	0	200	425	425	425
India	61	80	145	220	200	200
Mexico	1,103	624	553	217	417	417
Nigeria	200	200	200	200	200	200
Sudan	958	313	547	1,042	537	537
Others	1,277	1,352	993	1,051	1,000	794
Subtotal	3,786	2,816	2,756	3,273	3,122	2,916
United States	852	1,446	1,668	814	1,069	1,323
World Total	4,638	4,262	4,424	4,087	4,191	4,239

Regional Sorghum Imports, Production, Consumption, and Stocks

Thousand Metric Tons

	2003/04	2004/05	2005/06	2006/07	Mar 2007/08	Apr 2007/08
TY Imports						
North America	3,002	2,932	3,029	1,916	1,500	1,500
Central America	0	4	0	0	0	0
Caribbean	0	0	0	0	0	0
South America	104	158	69	250	155	155
European Union	1,139	218	77	1,474	4,300	4,500
Other Europe	24	0	0	0	100	100
Middle East	105	34	44	78	150	150
North Africa	0	0	35	0	0	0
Sub-Saharan Africa	232	412	586	456	380	380
East Asia	1,526	1,450	1,485	1,349	1,425	1,425
South Asia	0	4	0	3	0	0
Southeast Asia	25	7	7	9	5	5
Oceania	0	0	0	0	0	0
Total	6,157	5,219	5,332	5,535	8,015	8,215
Production						
North America	17,746	17,413	15,481	12,860	19,127	19,127
Central America	332	330	307	326	326	326
Caribbean	128	128	128	128	128	128
South America	5,075	5,777	4,583	5,636	6,346	5,851
European Union	385	499	489	558	574	582
Other Europe	0	0	0	0	0	0
Middle East	476	568	494	671	485	665
North Africa	915	915	915	915	915	915
Sub-Saharan Africa	21,315	20,045	23,570	25,212	23,987	23,917
East Asia	2,883	2,341	2,554	2,106	2,620	2,620
South Asia	6,918	7,426	7,860	7,380	7,530	7,530
Southeast Asia	96	93	77	65	90	70
Oceania	2,009	2,011	1,929	1,367	2,500	2,700
Total	58,278	57,546	58,387	57,224	64,628	64,431
Domestic Consumption						
North America	15,438	15,555	13,423	11,972	12,934	12,680
Central America	335	355	310	325	331	331
Caribbean	128	128	128	128	128	128
South America	4,509	5,594	4,690	4,609	5,089	4,594
European Union	1,971	521	683	1,120	5,370	5,570
Other Europe	24	0	0	0	100	100
Middle East	581	610	538	724	635	828
North Africa	915	915	950	915	915	915
Sub-Saharan Africa	20,550	21,039	23,616	24,832	24,900	24,830
East Asia	4,603	3,886	3,984	3,475	3,840	3,840
South Asia	6,938	7,387	7,770	7,280	7,525	7,525
Southeast Asia	103	78	76	65	70	55
Oceania	1,405	1,755	1,895	1,305	2,055	2,255
Total	57,500	57,823	58,063	56,750	63,892	63,651
Ending Stocks						
North America	1,955	2,070	2,221	1,031	1,486	1,740
Central America	42	16	17	18	13	13
Caribbean	0	0	0	0	0	0
South America	558	535	302	367	534	329
European Union	32	234	90	176	70	78
Other Europe	0	0	0	0	0	0
Middle East	43	36	36	61	36	48
North Africa	40	39	39	39	39	39
Sub-Saharan Africa	1,375	773	1,163	1,919	1,341	1,341
East Asia	465	342	371	207	258	262
South Asia	61	80	145	220	200	200
Southeast Asia	4	23	17	6	26	1
Oceania	63	114	23	43	188	188
Total	4,638	4,262	4,424	4,087	4,191	4,239

2003/04	2004/05	2005/06	2006/07	Mar 2007/08	Apr 2007/08
----------------	----------------	----------------	----------------	------------------------	------------------------

NOTES: Regional definitions appear on last page of this circular. Imports are reported on a trade year basis. All other data are reported using local marketing years.

World Oats Trade
October/September Year, Thousand Metric Tons

	2003/04	2004/05	2005/06	2006/07	2007/08 Mar	2007/08 Apr
TY Exports						
Argentina	0	2	1	2	5	5
Australia	210	137	191	75	75	75
Canada	984	1,374	1,754	1,921	2,100	2,100
Chile	44	29	27	41	25	25
EU-27	483	356	231	124	200	200
Kazakhstan, Republic of	5	5	5	9	5	5
Others	12	21	5	13	0	0
Subtotal	1,738	1,924	2,214	2,185	2,410	2,410
United States	38	31	40	33	30	30
World Total	1,776	1,955	2,254	2,218	2,440	2,440
TY Imports						
Algeria	1	2	4	9	5	5
Bosnia and Herzegovina	5	6	5	4	5	5
Canada	19	16	21	18	20	20
China, Peoples Republic of	9	13	18	9	20	20
Colombia	23	26	26	18	25	25
Ecuador	0	0	5	14	5	5
EU-27	3	1	2	5	10	10
Japan	67	67	59	62	60	60
Mexico	91	51	83	57	50	50
Morocco	0	1	1	5	5	5
Norway	2	2	48	59	50	50
South Africa, Republic of	31	42	18	13	25	25
Switzerland	38	26	48	42	50	50
Others	27	7	0	23	0	0
Subtotal	316	260	338	338	330	330
Unaccounted	158	66	85	86	110	110
United States	1,302	1,629	1,831	1,794	2,000	2,000
World Total	1,776	1,955	2,254	2,218	2,440	2,440

TY=Trade Year, see Endnotes.

World Oats Production, Consumption, and Stocks
Local Marketing Years, Thousand Metric Tons

	2003/04	2004/05	2005/06	2006/07	2007/08 Mar	2007/08 Apr
Production						
Algeria	75	80	80	80	80	80
Argentina	348	508	350	400	400	400
Australia	2,018	1,283	1,690	733	850	850
Belarus	500	770	600	550	600	600
Brazil	413	433	517	475	475	475
Canada	3,377	3,467	3,283	3,852	4,700	4,700
Chile	425	425	420	380	380	380
China, Peoples Republic of	600	600	600	600	600	600
EU-27	9,019	9,146	7,968	7,726	8,868	8,900
Kazakhstan, Republic of	100	140	140	140	160	160
Norway	333	359	360	360	360	360
Russian Federation	5,200	4,950	4,550	4,900	5,400	5,400
Serbia	nr	nr	nr	120	120	120
Turkey	285	290	290	290	290	290
Ukraine	925	1,000	800	700	550	550
Others	545	537	546	443	417	417
Subtotal	24,163	23,988	22,194	21,749	24,250	24,282
United States	2,096	1,679	1,667	1,359	1,330	1,330
World Total	26,259	25,667	23,861	23,108	25,580	25,612
Total Consumption						
Argentina	359	500	350	400	400	400
Australia	1,705	1,175	1,400	850	800	800
Belarus	500	700	650	550	600	600
Brazil	410	425	515	475	475	475
Canada	1,873	1,978	1,966	2,288	2,400	2,400
Chile	380	400	400	350	350	350
China, Peoples Republic of	610	610	620	615	614	614
EU-27	8,636	8,719	7,868	7,647	8,580	8,615
Kazakhstan, Republic of	95	135	135	135	155	155
Mexico	182	126	137	175	130	130
Norway	340	360	410	420	410	410
Russian Federation	5,600	4,900	4,600	4,900	5,400	5,400
Serbia	nr	nr	nr	120	120	120
Turkey	288	290	290	290	290	290
Ukraine	950	1,000	800	700	550	550
Others	702	710	713	606	597	597
Subtotal	22,890	22,116	20,906	20,482	21,912	21,947
United States	3,389	3,297	3,287	3,181	3,374	3,374
World Total	26,279	25,413	24,193	23,663	25,286	25,321
Ending Stocks						
Argentina	77	83	82	77	72	72
Australia	290	261	360	168	143	143
Canada	788	974	872	551	771	771
China, Peoples Republic of	106	109	107	101	107	107
EU-27	835	906	772	762	857	857
Norway	33	34	32	35	35	35
Russian Federation	184	240	190	190	190	190
Others	123	183	121	126	131	131
Subtotal	2,436	2,790	2,536	2,010	2,306	2,306
United States	941	841	763	734	729	729
World Total	3,377	3,631	3,299	2,744	3,035	3,035

Regional Oats Imports, Production, Consumption, and Stocks
Thousand Metric Tons

	2003/04	2004/05	2005/06	2006/07	Mar 2007/08	Apr 2007/08
TY Imports						
North America	1,412	1,696	1,935	1,869	2,070	2,070
South America	34	26	31	33	30	30
European Union	3	1	2	5	10	10
Other Europe	47	34	101	105	105	105
Former Soviet Union - 12	9	7	0	6	0	0
Middle East	5	0	0	16	0	0
North Africa	1	3	5	14	10	10
Sub-Saharan Africa	31	42	18	13	25	25
East Asia	76	80	77	71	80	80
Oceania	0	0	0	0	0	0
Total	1,618	1,889	2,169	2,132	2,330	2,330
Production						
North America	5,568	5,221	5,030	5,291	6,110	6,110
South America	1,221	1,397	1,316	1,303	1,278	1,278
European Union	9,019	9,146	7,968	7,726	8,868	8,900
Other Europe	586	628	637	637	637	637
Former Soviet Union - 12	6,735	6,870	6,098	6,296	6,715	6,715
Middle East	285	290	290	290	290	290
North Africa	105	110	110	110	110	110
Sub-Saharan Africa	45	45	45	45	45	45
East Asia	602	602	602	602	602	602
Oceania	2,093	1,358	1,765	808	925	925
Total	26,259	25,667	23,861	23,108	25,580	25,612
Domestic Consumption						
North America	5,444	5,401	5,390	5,644	5,904	5,904
South America	1,207	1,382	1,325	1,298	1,278	1,278
European Union	8,636	8,719	7,868	7,647	8,580	8,615
Other Europe	647	664	739	752	742	742
Former Soviet Union - 12	7,155	6,745	6,193	6,291	6,710	6,710
Middle East	288	290	290	290	290	290
North Africa	106	110	115	120	120	120
Sub-Saharan Africa	79	87	63	58	70	70
East Asia	677	677	683	677	676	676
Oceania	1,780	1,250	1,475	925	875	875
Total	26,019	25,325	24,141	23,702	25,245	25,280
Ending Stocks						
North America	1,732	1,818	1,638	1,289	1,504	1,504
South America	104	118	112	112	112	112
European Union	835	906	772	762	857	857
Other Europe	52	50	48	51	51	51
Former Soviet Union - 12	242	351	246	243	243	243
Middle East	0	0	0	0	0	0
North Africa	1	1	1	1	1	1
Sub-Saharan Africa	12	12	12	12	12	12
East Asia	109	114	110	106	112	112
Oceania	290	261	360	168	143	143
Total	3,377	3,631	3,299	2,744	3,035	3,035

NOTES: Regional definitions appear on last page of this circular. Imports are reported on a trade year basis. All other data are reported using local marketing years.

World Rye Trade
October/September Year, Thousand Metric Tons

	2003/04	2004/05	2005/06	2006/07	2007/08 Mar	2007/08 Apr
TY Exports						
Belarus	50	50	50	75	150	150
Canada	186	123	141	207	100	125
EU-27	231	677	381	308	50	50
Ukraine	6	122	49	0	10	10
Others	36	0	0	64	0	0
Subtotal	509	972	621	654	310	335
United States	2	2	1	2	5	5
World Total	511	974	622	656	315	340
TY Imports						
EU-27	44	6	2	36	50	75
Israel	23	111	102	71	15	15
Japan	341	261	279	258	75	100
Korea, Republic of	114	8	7	8	5	5
Norway	16	13	4	22	5	5
Russian Federation	6	177	56	50	25	25
Switzerland	7	2	9	4	5	5
Turkey	16	61	2	18	5	5
Others	43	12	16	7	0	0
Subtotal	610	651	477	474	185	235
Unaccounted	-200	149	15	46	30	5
United States	101	174	130	136	100	100
World Total	511	974	622	656	315	340

TY=Trade Year, see Endnotes.

World Rye Production, Consumption, and Stocks
Local Marketing Years, Thousand Metric Tons

	2003/04	2004/05	2005/06	2006/07	2007/08 Mar	2007/08 Apr
Production						
Argentina	37	89	55	55	55	55
Belarus	1,200	1,400	1,150	1,200	1,300	1,300
Canada	327	398	330	383	230	230
EU-27	6,972	10,031	7,688	6,536	7,583	7,583
Russian Federation	4,200	2,850	3,600	3,000	3,900	3,900
Turkey	240	240	240	240	240	240
Ukraine	625	1,600	1,050	600	550	550
Others	163	184	188	180	187	187
Subtotal	13,764	16,792	14,301	12,194	14,045	14,045
United States	219	210	191	183	201	201
World Total	13,983	17,002	14,492	12,377	14,246	14,246
Total Consumption						
Argentina	37	89	55	55	55	55
Belarus	1,200	1,325	1,100	1,125	1,200	1,200
Canada	138	211	187	187	190	190
EU-27	8,908	10,135	8,620	7,241	7,500	7,525
Japan	340	261	279	258	75	100
Kazakhstan, Republic of	45	50	50	50	50	50
Norway	40	51	41	55	42	42
Russian Federation	5,500	3,300	3,600	3,100	3,925	3,925
Turkey	283	299	247	245	245	245
Ukraine	900	1,300	1,050	800	550	550
Others	250	230	238	205	125	125
Subtotal	17,701	17,323	15,454	13,402	13,958	13,983
United States	297	344	332	337	324	324
World Total	17,998	17,667	15,786	13,739	14,282	14,307
Ending Stocks						
Belarus	139	164	164	164	114	114
Canada	43	108	119	107	47	22
EU-27	3,834	3,156	1,874	775	858	858
Japan	20	20	20	20	20	20
Russian Federation	355	77	126	76	76	76
Ukraine	140	336	267	72	62	62
Others	1	1	0	0	0	0
Subtotal	4,532	3,862	2,570	1,214	1,177	1,152
United States	15	20	18	12	13	13
World Total	4,547	3,882	2,588	1,226	1,190	1,165

Regional Rye Imports, Production, Consumption, and Stocks
Thousand Metric Tons

	2003/04	2004/05	2005/06	2006/07	Mar 2007/08	Apr 2007/08
TY Imports						
North America	101	174	130	136	100	100
South America	0	0	0	0	0	0
European Union	44	6	2	36	50	75
Other Europe	24	17	14	28	10	10
Former Soviet Union - 12	48	187	71	55	25	25
Middle East	39	172	104	89	20	20
Sub-Saharan Africa	0	0	0	0	0	0
East Asia	455	269	286	266	80	105
Oceania	0	0	0	0	0	0
Total	711	825	607	610	285	335
Production						
North America	546	608	521	566	431	431
South America	42	94	64	61	61	61
European Union	6,972	10,031	7,688	6,536	7,583	7,583
Other Europe	85	106	106	101	108	108
Former Soviet Union - 12	6,075	5,900	5,850	4,850	5,800	5,800
Middle East	240	240	240	240	240	240
Sub-Saharan Africa	3	3	3	3	3	3
East Asia	0	0	0	0	0	0
Oceania	20	20	20	20	20	20
Total	13,983	17,002	14,492	12,377	14,246	14,246
Domestic Consumption						
North America	435	555	519	524	514	514
South America	42	94	64	61	61	61
European Union	8,908	10,135	8,620	7,241	7,500	7,525
Other Europe	115	124	123	122	118	118
Former Soviet Union - 12	7,655	5,985	5,815	5,075	5,725	5,725
Middle East	306	410	349	346	260	260
Sub-Saharan Africa	3	3	3	3	3	3
East Asia	454	269	286	266	80	105
Oceania	20	20	20	20	20	20
Total	17,938	17,595	15,799	13,658	14,281	14,331
Ending Stocks						
North America	58	128	137	119	60	35
South America	0	0	0	0	0	0
European Union	3,834	3,156	1,874	775	858	858
Other Europe	1	1	0	0	0	0
Former Soviet Union - 12	634	577	557	312	252	252
Middle East	0	0	0	0	0	0
Sub-Saharan Africa	0	0	0	0	0	0
East Asia	20	20	20	20	20	20
Oceania	0	0	0	0	0	0
Total	4,547	3,882	2,588	1,226	1,190	1,165

NOTES: Regional definitions appear on last page of this circular. Imports are reported on a trade year basis. All other data are reported using local marketing years.



HISTORICAL DATA SERIES FOR SELECTED REGIONS AND COUNTRIES

CONTENTS

European Union: Grain Supply and Demand	39
China: Grain Supply and Demand	40
Other Europe: Grain Supply and Demand	41
Former Soviet Union: Grain Supply and Demand.....	42
Wheat Supply and Disappearance: Selected Exporters	49
Corn Supply and Disappearance: Selected Exporters.....	51
Barley Supply and Disappearance: Selected Exporters	53
Sorghum Supply and Disappearance: Selected Exporters	54
U.S. Grains: Supply and Distribution	55
Total Wheat and Coarse Grains: Supply and Demand	57
World Wheat and Coarse Grains: Supply and Demand	58
World Corn and Barley: Supply and Demand	60
World Rice: Supply and Demand	62

European Union: Grain Supply and Demand
Wheat and Coarse Grains Millions of Metric Tons/Hectares

	Area Harvested	Yield	Production	Imports	Exports	Feed Dom. Consumpti	Domestic Consumpti	Ending Stocks
Wheat								
1999/00	24.6	5.0	122.4	4.0	20.4	52.8	113.2	16.3
2000/01	26.5	5.0	131.7	3.5	15.7	56.3	118.4	17.5
2001/02	25.9	4.8	123.4	8.7	12.8	56.5	118.5	18.3
2002/03	26.4	5.0	132.6	10.7	18.1	60.0	125.0	18.5
2003/04	24.3	4.5	110.6	7.4	9.8	52.4	115.1	11.5
2004/05	26.0	5.7	146.9	7.1	14.7	59.2	123.2	27.5
2005/06	25.8	5.1	132.4	6.8	15.7	63.0	127.5	23.4
2006/07	24.5	5.1	124.8	5.1	13.9	60.2	125.5	14.0
2007/08	24.9	4.8	119.6	6.5	9.0	53.7	119.0	12.1
Coarse Grains								
1999/00	33.6	4.4	147.9	2.9	13.4	105.8	140.1	22.9
2000/01	33.0	4.2	139.9	4.1	9.3	105.1	139.3	18.3
2001/02	33.6	4.5	150.2	3.9	6.7	107.8	143.6	22.3
2002/03	32.7	4.5	148.3	4.4	7.6	109.3	144.9	22.5
2003/04	32.7	4.0	131.7	8.2	4.2	109.6	145.2	13.0
2004/05	33.5	5.0	166.6	3.0	4.9	116.5	152.6	25.1
2005/06	32.6	4.5	146.7	2.8	4.4	109.4	147.5	22.7
2006/07	31.8	4.3	138.3	8.0	4.7	108.0	146.5	17.9
2007/08	31.0	4.4	136.9	16.7	5.1	114.5	153.7	12.7
Wheat and Coarse Grains								
1999/00	58.2	4.6	270.4	6.8	33.8	158.6	253.4	39.2
2000/01	59.5	4.6	271.6	7.6	24.9	161.5	257.7	35.8
2001/02	59.5	4.6	273.6	12.7	19.4	164.3	262.0	40.6
2002/03	59.2	4.7	280.9	15.0	25.7	169.3	269.9	41.0
2003/04	57.0	4.3	242.3	15.6	14.0	162.1	260.3	24.5
2004/05	59.5	5.3	313.5	10.1	19.6	175.7	275.8	52.6
2005/06	58.5	4.8	279.1	9.5	20.0	172.4	275.1	46.1
2006/07	56.3	4.7	263.1	13.1	18.6	168.2	272.0	31.8
2007/08	55.9	4.6	256.6	23.2	14.1	168.2	272.7	24.8

China: Grain Supply and Demand

Wheat and Coarse Grains Millions of Metric Tons/Hectares

	Area Harvested	Yield	Production	Imports	Exports	Feed Dom. Consumpti	Domestic Consumpti	Ending Stocks
Wheat								
1996/97	29.6	3.7	110.6	2.7	1.0	3.4	107.6	81.2
1997/98	30.1	4.1	123.3	1.9	1.2	4.9	109.1	96.2
1998/99	29.8	3.7	109.7	0.8	0.5	5.0	108.3	97.9
1999/00	28.9	3.9	113.9	1.0	0.5	6.5	109.3	102.9
2000/01	26.7	3.7	99.6	0.2	0.6	10.0	110.3	91.9
2001/02	24.6	3.8	93.9	1.1	1.5	9.0	108.7	76.6
2002/03	23.9	3.8	90.3	0.4	1.7	6.5	105.2	60.4
2003/04	22.0	3.9	86.5	3.7	2.8	6.0	104.5	43.3
2004/05	21.6	4.3	92.0	6.7	1.2	4.0	102.0	38.8
2005/06	22.8	4.3	97.5	1.0	1.4	3.5	101.0	34.9
2006/07	23.0	4.6	104.5	0.4	2.8	4.0	101.0	36.0
2007/08	23.1	4.6	106.0	0.2	2.7	4.0	100.5	38.9
Coarse Grains								
1996/97	29.1	4.9	141.3	2.1	4.0	82.6	121.0	119.5
1997/98	28.1	4.1	114.7	1.6	6.2	87.2	121.6	108.0
1998/99	29.1	4.9	143.5	2.6	3.4	91.4	127.3	123.4
1999/00	29.6	4.6	137.2	2.3	10.0	92.7	128.8	124.2
2000/01	26.5	4.3	114.0	2.4	7.3	94.4	130.4	102.8
2001/02	27.5	4.4	122.2	2.0	8.6	96.2	132.9	85.6
2002/03	28.0	4.7	130.7	1.8	15.3	98.4	136.4	66.4
2003/04	27.1	4.6	124.0	1.5	7.7	99.1	138.7	45.5
2004/05	28.2	4.9	138.3	2.1	7.6	100.2	141.2	37.0
2005/06	29.1	5.1	147.7	2.3	3.8	103.1	147.5	35.8
2006/07	29.8	5.1	153.5	1.2	5.4	104.5	152.2	32.8
2007/08	30.9	5.0	153.6	1.3	0.8	106.5	157.5	29.5
Wheat and Coarse Grains								
1996/97	58.7	4.3	251.9	4.8	5.0	86.0	228.6	200.7
1997/98	58.1	4.1	238.0	3.5	7.4	92.1	230.6	204.2
1998/99	58.8	4.3	253.2	3.4	3.9	96.4	235.6	221.3
1999/00	58.4	4.3	251.1	3.4	10.5	99.2	238.1	227.1
2000/01	53.1	4.0	213.6	2.6	7.9	104.4	240.7	194.7
2001/02	52.1	4.1	216.1	3.1	10.1	105.2	241.6	162.1
2002/03	51.9	4.3	221.0	2.2	17.1	104.9	241.6	126.7
2003/04	49.1	4.3	210.4	5.3	10.5	105.1	243.2	88.8
2004/05	49.8	4.6	230.2	8.8	8.8	104.2	243.2	75.8
2005/06	51.9	4.7	245.1	3.3	5.2	106.6	248.5	70.7
2006/07	52.8	4.9	258.0	1.5	8.2	108.5	253.2	68.8
2007/08	54.0	4.8	259.6	1.5	3.5	110.5	258.0	68.4

Other Europe: Grain Supply and Demand
Wheat and Coarse Grains Millions of Metric Tons/Hectares

	Area Harvested	Yield	Production	Imports	Exports	Feed Dom. Consumpti	Domestic Consumpti	Ending Stocks
Wheat								
1996/97	1.2	3.2	3.9	1.3	0.3	0.5	4.9	0.9
1997/98	1.5	3.7	5.6	1.3	0.0	0.5	6.6	1.1
1998/99	1.6	3.9	6.0	1.0	0.1	0.6	6.6	1.5
1999/00	1.3	3.3	4.2	1.5	0.1	0.7	5.7	1.3
2000/01	1.4	3.3	4.6	1.2	0.3	0.7	5.5	1.4
2001/02	1.4	3.4	4.9	1.8	0.6	0.9	5.9	1.5
2002/03	1.4	3.5	4.9	1.4	0.6	0.9	5.7	1.4
2003/04	1.2	3.1	3.9	1.5	0.1	0.7	5.5	1.2
2004/05	1.4	4.0	5.4	1.5	0.3	1.0	6.0	1.8
2005/06	1.2	3.6	4.2	1.5	0.2	0.9	5.9	1.4
2006/07	1.2	3.6	4.3	1.5	0.6	0.7	5.5	1.1
2007/08	1.2	3.7	4.4	1.5	0.7	0.7	5.4	0.9
Coarse Grains								
1996/97	2.9	3.7	10.8	0.6	0.2	9.8	11.1	0.9
1997/98	2.8	4.3	12.1	0.5	0.3	10.7	12.0	1.2
1998/99	2.8	3.9	11.2	0.4	0.3	10.2	11.6	0.9
1999/00	2.8	4.4	12.2	0.6	0.3	11.2	12.5	0.9
2000/01	2.6	3.1	8.1	1.0	0.0	7.7	9.0	1.0
2001/02	2.7	4.1	10.9	0.8	0.2	9.8	11.1	1.4
2002/03	2.7	4.4	11.7	0.6	0.6	9.9	11.4	1.8
2003/04	2.7	3.5	9.2	0.8	0.1	9.5	10.8	1.1
2004/05	2.7	4.8	12.8	0.5	0.6	10.8	12.1	1.6
2005/06	2.7	4.8	13.0	0.7	1.4	10.9	12.3	1.6
2006/07	2.5	4.8	12.1	0.8	0.9	10.6	11.9	1.6
2007/08	2.6	3.6	9.3	0.9	0.2	9.4	10.6	1.0
Wheat and Coarse Grains								
1996/97	4.1	3.6	14.7	1.9	0.5	10.4	16.1	1.8
1997/98	4.3	4.1	17.6	1.9	0.3	11.2	18.6	2.4
1998/99	4.4	3.9	17.2	1.4	0.4	10.8	18.2	2.4
1999/00	4.0	4.1	16.4	2.1	0.3	11.9	18.2	2.3
2000/01	4.0	3.2	12.7	2.2	0.3	8.4	14.5	2.3
2001/02	4.1	3.9	15.8	2.6	0.8	10.7	17.0	2.9
2002/03	4.1	4.1	16.6	2.0	1.2	10.8	17.0	3.2
2003/04	3.9	3.4	13.1	2.3	0.2	10.2	16.3	2.2
2004/05	4.0	4.5	18.2	2.0	0.9	11.7	18.2	3.4
2005/06	3.8	4.5	17.2	2.1	1.6	11.8	18.2	3.0
2006/07	3.7	4.4	16.4	2.3	1.5	11.3	17.4	2.8
2007/08	3.8	3.6	13.7	2.4	0.9	10.0	16.0	1.9

Former Soviet Union: Grain Supply and Demand
Wheat and Coarse Grains Millions of Metric Tons/Hectares

	Area Harvested	Yield	Production	Imports	Exports	Feed Dom. Consumpti	Domestic Consumpti	Ending Stocks
Wheat								
2001/02	45.7	2.0	91.3	3.8	13.9	21.1	70.3	16.0
2002/03	48.4	2.0	96.9	4.6	25.7	24.8	75.4	16.5
2003/04	40.3	1.5	60.9	7.2	7.9	17.6	65.9	10.8
2004/05	46.5	1.9	86.5	4.8	15.5	21.0	73.2	13.5
2005/06	48.5	1.9	91.9	5.1	21.1	23.3	75.7	13.7
2006/07	45.9	1.9	86.0	5.9	22.4	21.4	73.6	9.6
2007/08	47.5	2.0	93.7	5.6	21.6	23.8	76.8	10.4
Coarse Grains								
2001/02	32.6	1.9	61.8	1.0	6.6	33.3	50.8	11.4
2002/03	31.4	1.9	60.8	0.7	8.1	35.0	52.8	11.9
2003/04	31.2	1.8	55.4	1.5	6.1	39.4	56.8	5.9
2004/05	31.2	2.0	63.0	1.1	8.1	38.1	54.7	7.2
2005/06	28.4	1.9	55.3	1.2	8.5	33.8	49.8	5.5
2006/07	29.8	2.0	58.7	0.9	8.5	35.7	51.3	5.3
2007/08	29.4	1.8	53.9	0.6	4.9	34.9	50.4	4.5

Former Soviet Union: Grain Supply and Demand (Wheat)
Millions of Tons/Hectares

Country Mktg Year	Area Harvested	Yield	Production	MY Imports	MY Exports	Feed Consumpti	Total Consumpti	Ending Stocks
Former Soviet Union - 12								
Kazakhstan, Republic of								
2003/04	11.3	1.0	11.0	0.0	4.2	2.7	6.8	3.7
2004/05	11.8	0.8	10.0	0.0	3.0	2.7	7.4	3.2
2005/06	11.8	0.9	11.0	0.0	3.8	2.7	7.4	3.0
2006/07	12.4	1.1	13.5	0.0	8.0	2.7	7.5	1.0
2007/08	12.8	1.3	16.6	0.0	8.5	2.7	7.5	1.7
Russian Federation								
2003/04	22.2	1.5	34.1	1.0	3.1	12.5	35.5	2.6
2004/05	24.2	1.9	45.4	1.2	8.0	13.6	37.4	3.9
2005/06	25.4	1.9	47.7	1.3	10.7	14.9	38.4	3.8
2006/07	23.7	1.9	44.9	0.9	10.8	14.1	36.4	2.4
2007/08	24.5	2.0	49.4	1.0	12.5	15.4	38.2	2.1
Ukraine								
2003/04	2.5	1.5	3.6	3.4	0.1	0.4	9.0	1.1
2004/05	5.9	3.0	17.5	0.0	4.4	2.1	11.7	2.6
2005/06	6.6	2.8	18.7	0.1	6.5	2.9	12.5	2.4
2006/07	5.5	2.5	14.0	0.1	3.4	2.1	11.7	1.4
2007/08	6.0	2.3	13.9	0.4	0.5	3.1	12.7	2.5
Uzbekistan, Republic of								
2003/04	1.5	3.7	5.4	0.2	0.5	0.8	5.2	0.9
2004/05	1.4	3.8	5.3	0.4	0.1	1.0	5.7	0.8
2005/06	1.5	4.0	5.8	0.6	0.1	1.1	6.1	1.0
2006/07	1.3	4.5	5.9	1.1	0.1	1.1	6.5	1.3
2007/08	1.3	4.8	6.2	0.7	0.1	1.2	6.8	1.3
Other Former Soviet Union - 12								
2003/04	2.9	2.3	6.8	2.6	0.1	1.2	9.4	2.5
2004/05	3.2	2.6	8.4	3.1	0.1	1.6	11.0	3.0
2005/06	3.3	2.6	8.7	3.1	0.1	1.7	11.3	3.5
2006/07	3.0	2.5	7.7	3.9	0.1	1.4	11.5	3.4
2007/08	3.0	2.6	7.6	3.5	0.0	1.4	11.6	2.9
Total Former Soviet Union - 12								
2003/04	40.3	1.5	60.9	7.2	7.9	17.6	65.9	10.8
2004/05	46.5	1.9	86.5	4.8	15.5	21.0	73.2	13.5
2005/06	48.5	1.9	91.9	5.1	21.1	23.3	75.7	13.7
2006/07	45.9	1.9	86.0	5.9	22.4	21.4	73.6	9.6
2007/08	47.5	2.0	93.7	5.6	21.6	23.8	76.8	10.4

Former Soviet Union: Grain Supply and Demand (Wheat) (Continued)
Millions of Tons/Hectares

Country	Mktg Year	Area Harvested	Yield	Production	MY Imports	MY Exports	Feed Consumpti	Total Consumpti	Ending Stocks
---------	-----------	----------------	-------	------------	------------	------------	----------------	-----------------	---------------

Former Soviet Union: Grain Supply and Demand (Barley)
Millions of Tons/Hectares

Country Mktg Year	Area Harvested	Yield	Production	MY Imports	MY Exports	Feed Consumpti	Total Consumpti	Ending Stocks
Former Soviet Union - 12								
Kazakhstan, Republic of								
2003/04	1.8	1.2	2.1	0.0	0.7	1.9	2.0	0.4
2004/05	1.7	0.9	1.5	0.0	0.1	1.5	1.6	0.2
2005/06	1.6	0.9	1.5	0.0	0.1	1.3	1.4	0.2
2006/07	1.8	1.1	1.9	0.1	0.6	1.3	1.4	0.2
2007/08	1.8	1.4	2.5	0.0	1.2	1.2	1.3	0.2
Russian Federation								
2003/04	10.5	1.7	18.0	0.4	2.3	13.7	18.6	2.2
2004/05	10.0	1.7	17.2	0.3	1.1	11.7	16.5	2.1
2005/06	9.2	1.7	15.8	0.2	1.7	10.9	15.5	0.9
2006/07	10.0	1.8	18.1	0.2	1.5	11.8	16.4	1.2
2007/08	9.8	1.6	15.7	0.2	1.0	10.7	15.3	0.8
Ukraine								
2003/04	4.6	1.5	6.9	0.0	1.5	4.7	6.2	0.6
2004/05	4.5	2.5	11.1	0.0	4.3	4.7	6.4	1.0
2005/06	4.4	2.1	9.0	0.1	4.0	3.2	4.9	1.2
2006/07	5.2	2.2	11.4	0.0	5.1	4.8	6.5	1.0
2007/08	4.1	1.5	6.0	0.1	1.0	3.8	5.5	0.5
Uzbekistan, Republic of								
2003/04	0.1	1.4	0.2	0.0	0.0	0.1	0.2	0.0
2004/05	0.1	2.9	0.2	0.0	0.0	0.2	0.2	0.0
2005/06	0.1	3.2	0.2	0.0	0.0	0.2	0.2	0.0
2006/07	0.1	3.2	0.2	0.0	0.0	0.2	0.2	0.0
2007/08	0.1	3.2	0.2	0.0	0.0	0.2	0.3	0.0
Other Former Soviet Union - 12								
2003/04	1.2	2.0	2.5	0.2	0.0	1.8	2.6	0.5
2004/05	1.2	2.6	3.2	0.1	0.0	2.2	2.9	0.8
2005/06	1.2	2.5	2.9	0.1	0.0	2.3	3.1	0.7
2006/07	1.1	2.1	2.4	0.1	0.0	1.9	2.5	0.6
2007/08	1.2	2.2	2.7	0.1	0.0	2.1	2.8	0.6
Total Former Soviet Union - 12								
2003/04	18.3	1.6	29.6	0.7	4.5	22.2	29.5	3.7
2004/05	17.5	1.9	33.2	0.3	5.5	20.2	27.6	4.2
2005/06	16.3	1.8	29.5	0.4	5.8	17.9	25.2	3.0
2006/07	18.2	1.9	34.0	0.4	7.3	19.9	27.0	3.1
2007/08	17.0	1.6	27.1	0.4	3.2	18.0	25.2	2.1

Former Soviet Union: Grain Supply and Demand (Barley) (Continued)
Millions of Tons/Hectares

Country	Mktg Year	Area Harvested	Yield	Production	MY Imports	MY Exports	Feed Consumpti	Total Consumpti	Ending Stocks
---------	-----------	----------------	-------	------------	------------	------------	----------------	-----------------	---------------

Former Soviet Union: Grain Supply and Demand (Corn)
Millions of Tons/Hectares

Country Mktg Year	Area Harvested	Yield	Production	MY Imports	MY Exports	Feed Consumpti	Total Consumpti	Ending Stocks
Former Soviet Union - 12								
Kazakhstan, Republic of								
2003/04	0.1	3.0	0.3	0.0	0.0	0.2	0.3	0.0
2004/05	0.1	3.0	0.3	0.0	0.0	0.2	0.3	0.0
2005/06	0.1	3.0	0.3	0.0	0.0	0.2	0.3	0.0
2006/07	0.1	3.2	0.3	0.0	0.0	0.2	0.3	0.0
2007/08	0.1	3.1	0.3	0.0	0.0	0.2	0.3	0.0
Russian Federation								
2003/04	0.7	3.0	2.1	0.5	0.0	2.2	2.6	0.2
2004/05	0.9	3.9	3.5	0.2	0.0	3.0	3.6	0.2
2005/06	0.9	3.8	3.2	0.3	0.1	3.0	3.6	0.1
2006/07	1.0	3.6	3.6	0.1	0.1	3.1	3.6	0.2
2007/08	1.3	3.0	4.0	0.2	0.1	3.4	4.0	0.2
Ukraine								
2003/04	2.0	3.4	6.9	0.0	1.2	4.9	5.6	0.8
2004/05	2.3	3.8	8.8	0.0	2.3	5.3	6.0	1.3
2005/06	1.7	4.3	7.2	0.0	2.5	4.4	5.1	0.9
2006/07	1.7	3.8	6.4	0.0	1.0	4.5	5.3	1.1
2007/08	1.9	3.9	7.4	0.0	1.5	5.0	5.6	1.4
Uzbekistan, Republic of								
2003/04	0.0	4.1	0.1	0.0	0.0	0.1	0.2	0.0
2004/05	0.0	4.4	0.2	0.0	0.0	0.1	0.2	0.0
2005/06	0.0	4.6	0.2	0.0	0.0	0.2	0.2	0.0
2006/07	0.0	4.6	0.2	0.0	0.0	0.2	0.2	0.0
2007/08	0.0	4.6	0.2	0.0	0.0	0.1	0.2	0.0
Other Former Soviet Union - 12								
2003/04	0.7	2.9	2.2	0.1	0.1	2.2	2.5	0.3
2004/05	0.9	3.1	2.7	0.3	0.0	2.4	2.7	0.5
2005/06	0.8	3.1	2.5	0.4	0.0	2.5	2.8	0.6
2006/07	0.7	3.4	2.4	0.4	0.0	2.5	2.8	0.5
2007/08	0.8	2.6	2.0	0.1	0.0	2.0	2.2	0.3
Total Former Soviet Union - 12								
2003/04	3.6	3.2	11.6	0.6	1.3	9.5	11.1	1.3
2004/05	4.2	3.7	15.4	0.5	2.4	11.0	12.7	2.1
2005/06	3.4	3.9	13.3	0.7	2.6	10.3	11.9	1.7
2006/07	3.5	3.6	12.8	0.5	1.1	10.5	12.1	1.7
2007/08	4.1	3.4	13.8	0.2	1.6	10.7	12.3	1.9

Former Soviet Union: Grain Supply and Demand (Corn) (Continued)
Millions of Tons/Hectares

Country Mktg Year	Area Harvested	Yield	Production	MY Imports	MY Exports	Feed Consumpti	Total Consumpti	Ending Stocks
--------------------------	-----------------------	--------------	-------------------	-------------------	-------------------	-----------------------	------------------------	----------------------

Wheat Supply and Disappearance: Selected Exporters
Million Metric Tons/Hectares

Country Mktg Year	Area Harvested	Yield	Production	MY Imports	MY Exports	Feed Consumpti	Total Consumpti	Ending Stocks
Wheat Competitors								
Argentina								
1999/00	6.2	2.7	16.4	0.0	11.6	0.1	4.9	0.6
2000/01	6.4	2.5	16.2	0.0	11.3	0.1	5.0	0.6
2001/02	6.8	2.3	15.5	0.0	10.1	0.1	4.9	1.1
2002/03	5.9	2.1	12.3	0.0	6.8	0.1	5.2	1.5
2003/04	5.7	2.5	14.5	0.0	9.4	0.1	5.2	1.4
2004/05	6.1	2.6	16.0	0.0	11.8	0.1	5.0	0.6
2005/06	5.0	2.9	14.5	0.0	9.6	0.1	5.0	0.5
2006/07	5.3	2.9	15.2	0.0	10.5	0.1	4.9	0.3
2007/08	5.4	2.9	15.5	0.0	9.5	0.1	5.4	0.9
Australia								
1999/00	12.2	2.0	24.8	0.1	17.8	2.5	5.2	4.6
2000/01	12.1	1.8	22.1	0.1	15.9	2.6	5.3	5.5
2001/02	11.6	2.1	24.3	0.1	16.4	2.7	5.4	8.0
2002/03	11.1	0.9	10.1	0.3	9.1	3.4	6.1	3.2
2003/04	13.1	2.0	26.1	0.1	18.0	3.2	5.9	5.4
2004/05	13.4	1.6	21.9	0.1	14.7	3.2	5.9	6.8
2005/06	12.5	2.0	25.2	0.1	16.0	3.7	6.4	9.6
2006/07	11.6	0.9	10.6	0.1	8.7	4.7	7.4	4.2
2007/08	12.3	1.1	13.1	0.1	7.5	3.5	6.2	3.7
Canada								
1999/00	10.4	2.6	26.9	0.2	19.2	4.1	8.1	7.3
2000/01	11.0	2.4	26.5	0.2	17.3	3.0	7.0	9.7
2001/02	10.6	1.9	20.6	0.3	16.3	3.6	7.7	6.5
2002/03	8.8	1.8	16.2	0.4	9.4	3.8	8.0	5.7
2003/04	10.2	2.3	23.0	0.2	15.8	3.1	7.2	6.0
2004/05	9.4	2.6	24.8	0.3	14.9	4.1	8.2	7.9
2005/06	9.4	2.7	25.7	0.3	16.0	4.2	8.3	9.6
2006/07	9.7	2.6	25.3	0.3	19.6	4.3	8.7	6.8
2007/08	8.6	2.3	20.1	0.3	14.0	4.5	9.1	4.1
Total Wheat Competitors								
1999/00	28.7	2.4	68.1	0.3	48.6	6.6	18.2	12.5
2000/01	29.5	2.2	64.9	0.3	44.5	5.7	17.4	15.8
2001/02	29.0	2.1	60.4	0.4	42.8	6.4	18.1	15.7
2002/03	25.8	1.5	38.6	0.7	25.3	7.3	19.3	10.5

Wheat Supply and Disappearance: Selected Exporters (Continued)
Million Metric Tons/Hectares

Country Mktg Year	Area Harvested	Yield	Production	MY Imports	MY Exports	Feed Consumpti	Total Consumpti	Ending Stocks
2003/04	29.0	2.2	63.7	0.3	43.3	6.4	18.3	12.8
2004/05	28.9	2.2	62.7	0.3	41.5	7.3	19.1	15.3
2005/06	26.9	2.4	65.4	0.4	41.6	8.0	19.7	19.8
2006/07	26.6	1.9	51.1	0.4	38.9	9.1	21.0	11.4
2007/08	26.3	1.8	48.7	0.4	31.0	8.1	20.7	8.7
India								
1999/00	27.4	2.6	70.8	1.4	0.2	0.4	68.8	13.1
2000/01	27.5	2.8	76.4	0.4	1.6	0.5	66.8	21.5
2001/02	25.7	2.7	69.7	0.0	3.1	0.5	65.1	23.0
2002/03	25.9	2.8	71.8	0.0	4.9	0.6	74.3	15.7
2003/04	24.9	2.6	65.1	0.0	5.7	0.6	68.3	6.9
2004/05	26.6	2.7	72.2	0.0	2.1	0.5	72.8	4.1
2005/06	26.5	2.6	68.6	0.0	0.8	0.3	70.0	2.0
2006/07	26.4	2.6	69.4	6.7	0.2	0.3	73.4	4.5
2007/08	28.2	2.7	75.8	2.0	0.1	0.2	75.9	6.4
Turkey								
1999/00	8.7	1.9	16.5	1.5	2.2	1.0	16.8	1.6
2000/01	8.7	2.1	18.0	0.5	1.6	1.0	16.7	1.7
2001/02	8.5	1.8	15.5	1.0	0.8	1.1	16.5	1.0
2002/03	8.6	2.0	16.8	1.2	0.8	1.0	16.8	1.5
2003/04	8.6	2.0	16.8	1.1	0.8	1.0	16.8	1.7
2004/05	8.6	2.2	18.5	0.4	2.0	1.0	16.8	1.8
2005/06	8.6	2.2	18.5	0.1	3.2	0.4	16.1	1.1
2006/07	8.6	2.0	17.5	1.8	2.0	0.8	16.7	1.7
2007/08	8.6	1.8	15.5	1.5	1.5	0.6	16.5	0.8

Corn Supply and Disappearance: Selected Exporters
Million Metric Tons/Hectares

Country Mktg Year	Area Harvested	Yield	Production	MY Imports	MY Exports	Feed Consumpti	Total Consumpti	Ending Stocks
Argentina								
1999/00	3.1	5.5	17.2	0.0	11.9	4.0	5.5	0.5
2000/01	2.8	5.5	15.4	0.0	9.7	3.9	5.6	0.6
2001/02	2.5	6.0	14.7	0.0	10.9	2.7	4.2	0.3
2002/03	2.5	6.3	15.5	0.0	11.2	2.5	4.1	0.5
2003/04	2.3	6.5	15.0	0.0	10.9	2.8	4.4	0.2
2004/05	2.8	7.4	20.5	0.0	14.6	3.5	5.2	1.0
2005/06	2.4	6.5	15.8	0.1	9.5	4.4	6.2	1.2
2006/07	2.8	8.0	22.5	0.0	15.3	4.8	6.7	1.7
2007/08	3.1	6.9	21.5	0.0	15.0	4.8	6.7	1.5
China, Peoples Republic of								
1999/00	25.9	4.9	128.1	0.1	9.9	89.5	117.3	123.8
2000/01	23.1	4.6	106.0	0.1	7.3	92.0	120.2	102.4
2001/02	24.3	4.7	114.1	0.0	8.6	94.0	123.1	84.8
2002/03	24.6	4.9	121.3	0.0	15.2	96.0	125.9	65.0
2003/04	24.1	4.8	115.8	0.0	7.6	97.0	128.4	44.9
2004/05	25.4	5.1	130.3	0.0	7.6	98.0	131.0	36.6
2005/06	26.4	5.3	139.4	0.1	3.7	101.0	137.0	35.3
2006/07	27.0	5.4	145.5	0.0	5.3	103.0	143.0	32.5
2007/08	28.0	5.2	145.0	0.1	0.5	105.0	148.0	29.1
South Africa, Republic of								
1999/00	3.8	3.0	11.5	0.0	1.4	4.1	8.9	2.0
2000/01	3.2	2.5	8.0	0.4	1.3	4.1	8.7	0.5
2001/02	3.5	2.8	10.1	0.9	1.1	3.9	8.4	1.9
2002/03	3.7	2.7	9.7	0.4	1.1	4.0	8.5	2.4
2003/04	3.3	2.9	9.7	0.2	0.7	4.1	8.7	3.0
2004/05	3.2	3.6	11.7	0.4	2.1	5.0	9.7	3.2
2005/06	2.0	3.4	6.9	0.9	0.5	4.0	8.2	2.3
2006/07	2.9	2.5	7.3	1.5	0.5	4.3	8.7	1.9
2007/08	3.2	3.4	11.0	0.3	1.5	4.5	9.1	2.6
Total Corn Competitors								
1999/00	45.4	4.1	188.4	1.7	23.5	126.1	165.2	128.0
2000/01	42.1	4.1	171.0	0.8	24.5	129.5	169.0	106.2
2001/02	42.1	4.1	174.3	1.3	22.6	130.1	170.7	88.6
2002/03	43.7	4.4	191.0	1.2	32.2	132.5	174.3	74.2
2003/04	42.1	4.3	182.5	0.6	23.7	134.4	177.8	55.9
2004/05	43.0	4.6	197.5	0.9	25.0	138.6	184.4	44.9

Corn Supply and Disappearance: Selected Exporters (Continued)
Million Metric Tons/Hectares

Country Mktg Year	Area Harvested	Yield	Production	MY Imports	MY Exports	Feed Consumpti	Total Consumpti	Ending Stocks
2005/06	43.7	4.7	203.8	2.2	18.3	142.4	190.9	41.7
2006/07	46.7	4.8	226.3	2.9	31.9	146.6	199.4	39.6
2007/08	48.8	4.7	230.5	1.1	26.0	150.3	206.3	38.9

Barley Supply and Disappearance: Selected Exporters
Million Metric Tons/Hectares

Country Mktg Year	Area Harvested	Yield	Production	MY Imports	MY Exports	Feed Consumpti	Total Consumpti	Ending Stocks
Australia								
1999/00	2.6	1.9	5.0	0.0	2.6	1.7	2.6	0.4
2000/01	3.5	2.0	6.7	0.0	4.0	1.3	2.2	1.0
2001/02	3.7	2.2	8.3	0.0	4.7	1.8	2.8	1.8
2002/03	3.9	1.0	3.9	0.0	2.0	1.8	2.7	0.9
2003/04	4.5	2.3	10.4	0.0	6.4	2.2	3.1	1.9
2004/05	4.6	1.7	7.7	0.0	4.3	2.5	3.5	1.9
2005/06	4.4	2.2	9.5	0.0	5.3	2.5	3.5	2.7
2006/07	4.1	1.0	4.2	0.0	1.9	2.9	3.8	1.2
2007/08	4.4	1.4	5.9	0.0	2.3	2.7	3.7	1.2
Canada								
1999/00	4.1	3.2	13.2	0.0	1.7	9.9	11.4	2.8
2000/01	4.6	2.9	13.2	0.0	2.0	10.1	11.6	2.5
2001/02	4.2	2.6	10.8	0.1	1.1	8.9	10.3	2.0
2002/03	3.3	2.2	7.5	0.2	0.4	6.5	7.9	1.5
2003/04	4.4	2.8	12.2	0.0	1.8	8.4	9.7	2.1
2004/05	3.8	3.3	12.6	0.1	1.2	8.8	10.1	3.4
2005/06	3.6	3.2	11.7	0.0	2.3	8.4	9.6	3.3
2006/07	3.2	3.0	9.6	0.0	1.2	8.9	10.2	1.5
2007/08	4.0	2.8	11.0	0.1	2.5	7.7	9.0	1.0
EU-27								
1999/00	14.7	4.0	59.3	0.2	9.7	38.5	53.2	11.7
2000/01	14.1	4.3	59.9	0.4	7.2	41.0	55.8	9.0
2001/02	14.1	4.2	58.8	1.4	4.2	39.7	54.9	10.0
2002/03	14.0	4.2	58.2	1.1	5.2	39.3	55.4	8.7
2003/04	14.1	4.0	55.8	0.7	2.6	41.8	58.0	4.5
2004/05	13.7	4.7	64.1	0.3	3.3	38.6	54.6	11.1
2005/06	13.8	4.0	54.8	0.1	3.3	38.2	54.1	8.5
2006/07	13.7	4.1	56.2	0.2	3.5	40.0	55.9	5.6
2007/08	13.6	4.2	57.8	0.2	4.5	38.5	54.4	4.6

Sorghum Supply and Disappearance: Selected Exporters
Million Metric Tons/Hectares

Country Mktg Year	Area Harvested	Yield	Production	MY Imports	MY Exports	Feed Consumpti	Total Consumpti	Ending Stocks
Argentina								
1999/00	0.7	4.6	3.4	0.0	0.9	2.4	2.5	0.7
2000/01	0.6	4.8	2.7	0.0	0.4	2.4	2.5	0.4
2001/02	0.5	5.1	2.8	0.0	0.4	2.2	2.3	0.5
2002/03	0.6	5.1	2.8	0.0	0.6	2.1	2.3	0.4
2003/04	0.5	4.6	2.2	0.0	0.2	1.9	2.0	0.4
2004/05	0.6	5.0	2.9	0.0	0.4	2.4	2.6	0.3
2005/06	0.5	4.7	2.2	0.0	0.2	2.0	2.2	0.1
2006/07	0.6	5.3	3.3	0.0	1.0	2.0	2.2	0.2
2007/08	0.7	5.0	3.5	0.0	1.3	2.1	2.3	0.1
Australia								
1999/00	0.6	3.4	2.1	0.0	0.9	1.3	1.3	0.1
2000/01	0.8	2.6	1.9	0.0	0.6	1.3	1.3	0.1
2001/02	0.8	2.5	2.0	0.0	0.4	1.7	1.7	0.1
2002/03	0.7	2.2	1.5	0.0	0.1	1.4	1.4	0.1
2003/04	0.7	2.7	2.0	0.0	0.6	1.4	1.4	0.1
2004/05	0.8	2.7	2.0	0.0	0.2	1.8	1.8	0.1
2005/06	0.8	2.5	1.9	0.0	0.1	1.9	1.9	0.0
2006/07	0.6	2.1	1.4	0.0	0.0	1.3	1.3	0.0
2007/08	0.8	3.4	2.7	0.0	0.3	2.3	2.3	0.2

U.S. Grains Supply and Distribution: Wheat, Corn, Sorghum, Barley, Oats, Rye, and Rice

Thousand Metric Tons/Hectares

	Area Harvested	Yield	Rough Production	Production	Imports	TY Imports	Exports	TY Exports	Feed Dom. Consumption	Domestic Consumption	Ending Stocks
Wheat											
2002/03	18,544	2	nr	43,705	2,106	1,958	23,139	22,834	3,150	30,448	13,374
2003/04	21,474	3	nr	63,814	1,715	1,760	31,524	32,295	5,521	32,507	14,872
2004/05	20,234	3	nr	58,738	1,921	1,946	29,009	28,464	4,955	31,823	14,699
2005/06	20,283	3	nr	57,280	2,214	2,309	27,291	27,424	4,347	31,357	15,545
2006/07	18,943	3	nr	49,316	3,317	3,395	24,729	25,025	3,416	31,035	12,414
2007/08	20,644	3	nr	56,247	2,449	2,900	34,700	35,500	1,633	29,827	6,583
Corn											
2002/03	28,057	8	nr	227,767	367	374	40,334	40,924	141,303	200,748	27,603
2003/04	28,710	9	nr	256,278	358	356	48,258	48,809	147,197	211,644	24,337
2004/05	29,798	10	nr	299,914	275	281	46,181	45,347	156,428	224,648	53,697
2005/06	30,399	9	nr	282,311	224	210	54,201	56,084	156,337	232,063	49,968
2006/07	28,590	9	nr	267,598	304	320	53,970	54,150	142,191	230,786	33,114
2007/08	35,022	9	nr	332,092	381	375	63,503	63,000	156,217	269,506	32,578
Sorghum											
2002/03	2,883	3	nr	9,163	1	1	4,681	4,877	4,328	4,939	1,093
2003/04	3,156	3	nr	10,446	0	0	5,049	4,845	4,624	5,638	852
2004/05	2,637	4	nr	11,523	1	1	4,675	4,541	4,860	6,255	1,446
2005/06	2,321	4	nr	9,981	0	0	4,936	4,961	3,553	4,823	1,668
2006/07	1,998	4	nr	7,050	2	2	3,994	4,497	2,769	3,912	814
2007/08	2,754	5	nr	12,827	1	0	7,239	7,000	4,191	5,080	1,323
Barley											
2002/03	1,669	3	nr	4,940	402	282	659	552	1,819	5,179	1,510
2003/04	1,913	3	nr	6,059	449	497	409	384	1,617	4,990	2,619
2004/05	1,627	4	nr	6,091	264	157	506	771	2,238	5,672	2,796
2005/06	1,323	3	nr	4,613	117	124	606	357	1,132	4,570	2,350
2006/07	1,194	3	nr	3,923	264	354	441	528	1,209	4,596	1,500
2007/08	1,420	3	nr	4,612	435	450	871	1,000	1,306	4,463	1,213
Oats											
2002/03	833	2	nr	1,684	1,640	1,777	38	39	2,435	3,480	723
2003/04	898	2	nr	2,096	1,547	1,302	36	38	2,330	3,389	941
2004/05	723	2	nr	1,679	1,557	1,629	39	31	2,223	3,297	841
2005/06	738	2	nr	1,667	1,572	1,831	30	40	2,217	3,287	763
2006/07	634	2	nr	1,359	1,831	1,794	38	33	2,104	3,181	734
2007/08	609	2	nr	1,330	2,068	2,000	29	30	2,286	3,374	729
Rye											

	Area Harvested	Yield	Rough Production	Production	Imports	TY Imports	Exports	TY Exports	Feed Dom. Consumption	Domestic Consumption	Ending Stocks
2002/03	106	2	nr	165	156	109	3	2	85	321	11
2003/04	129	2	nr	219	83	101	1	2	62	297	15
2004/05	121	2	nr	210	143	174	4	2	107	344	20
2005/06	113	2	nr	191	139	130	0	1	96	332	18
2006/07	111	2	nr	183	150	136	2	2	100	337	12
2007/08	117	2	nr	201	127	100	3	5	89	324	13
Rice, Milled											
2002/03	1,298	7	9,570	6,536	471	458	3,860	3,834	nr	3,534	829
2003/04	1,213	7	9,068	6,420	478	477	3,310	3,090	nr	3,656	761
2004/05	1,346	8	10,540	7,462	419	419	3,496	3,862	nr	3,935	1,211
2005/06	1,361	7	10,125	7,113	544	633	3,660	3,306	nr	3,838	1,370
2006/07	1,142	8	8,787	6,239	654	699	2,943	3,044	nr	4,054	1,266
2007/08	1,112	8	8,956	6,314	683	725	3,582	3,500	nr	3,990	691

Notes: Wheat Trade Year (TY) statistics are on July/June years. Barley, corn, sorghum, rye and oats Trade Year (TY) statistics are on Oct/Sept years. Rice Trade Year (TY) statistics are for the subsequent calendar year; 'Imports' and 'Exports' columns contain data on the local marketing year: wheat, barley, oats and rye are June/May; corn and sorghum are Sept/Aug; rice is Aug/July.

Total Wheat and Coarse Grains: Supply and Demand

Millions of Metric Tons/Hectares

	Area Harvested	Yield	Production TY	Exports	Feed Dom. Consumpti	Domestic Consumpti	Ending Stocks
Wheat and Coarse Grains							
1978/79	569.7	2.1	1,183.1	161.8	556.8	1,138.1	278.2
1979/80	569.0	2.0	1,153.1	182.6	573.9	1,157.6	273.7
1980/81	577.6	2.0	1,159.3	200.6	562.6	1,179.2	255.2
1981/82	587.8	2.0	1,204.0	196.9	573.5	1,178.3	281.0
1982/83	576.9	2.2	1,248.0	189.6	593.4	1,197.1	332.1
1983/84	563.8	2.1	1,162.5	193.2	588.4	1,216.2	278.5
1984/85	567.0	2.3	1,315.0	203.6	609.9	1,253.6	339.9
1985/86	570.9	2.3	1,328.5	165.2	613.1	1,247.9	420.4
1986/87	565.6	2.4	1,348.0	174.7	644.2	1,299.6	468.8
1987/88	544.6	2.4	1,285.1	202.2	655.2	1,329.7	422.1
1988/89	542.3	2.2	1,217.8	203.3	618.3	1,302.0	337.9
1989/90	548.7	2.4	1,327.3	208.9	643.0	1,346.2	319.1
1990/91	548.7	2.6	1,417.1	190.1	667.3	1,369.8	366.4
1991/92	545.3	2.5	1,355.1	207.5	650.0	1,364.5	357.0
1992/93	549.1	2.6	1,430.8	205.2	662.4	1,389.5	395.5
1993/94	540.5	2.5	1,356.2	188.2	654.2	1,389.3	362.4
1994/95	537.7	2.6	1,392.3	200.1	667.0	1,396.1	358.7
1995/96	533.4	2.5	1,338.3	187.5	636.6	1,380.3	316.7
1996/97	553.4	2.7	1,490.7	198.4	669.6	1,442.7	364.6
1997/98	539.8	2.8	1,491.8	190.3	680.5	1,444.9	411.5
1998/99	533.9	2.8	1,481.8	198.7	680.0	1,449.2	444.2
1999/00	515.6	2.8	1,465.0	214.3	685.0	1,467.5	441.1
2000/01	515.1	2.8	1,445.2	205.1	693.3	1,469.0	417.2
2001/02	516.3	2.9	1,476.3	208.5	708.1	1,493.2	400.3
2002/03	508.0	2.8	1,444.6	209.8	706.8	1,507.8	337.2
2003/04	516.3	2.8	1,470.1	205.9	711.0	1,533.7	273.5
2004/05	517.5	3.2	1,642.0	213.9	747.8	1,585.4	330.1
2005/06	520.2	3.1	1,599.1	221.7	746.5	1,615.6	313.6
2006/07	516.0	3.0	1,573.8	229.2	736.1	1,624.9	262.5
2007/08	532.6	3.1	1,665.4	231.4	754.9	1,687.9	240.0

Notes: Wheat and coarse grains trade data are on July June years through 1975/76. From 1976/77 to the present, coarse grains data are on an Oct/Sept trade year.

World Wheat and Coarse Grains: Supply and Demand

Millions of Metric Tons/Hectares

	Area Harvested	Yield	Production	TY Exports	Feed Dom. Consumpti	Domestic Consumpti	Ending Stocks
Wheat							
1978/79	228.9	1.9	438.9	71.3	89.8	413.3	134.8
1979/80	227.8	1.8	417.5	85.5	94.0	431.9	120.5
1980/81	236.9	1.8	435.9	93.2	91.2	444.1	112.7
1981/82	238.9	1.9	445.0	100.5	90.6	445.1	112.5
1982/83	238.4	2.0	472.7	97.7	92.8	455.6	129.9
1983/84	229.9	2.1	484.3	101.2	95.6	468.9	145.3
1984/85	231.7	2.2	508.9	104.7	99.9	486.2	168.0
1985/86	229.8	2.2	494.8	83.6	97.2	484.6	178.3
1986/87	227.9	2.3	524.1	89.7	113.2	511.4	191.0
1987/88	219.8	2.3	498.3	114.1	113.6	530.4	158.8
1988/89	217.7	2.3	494.9	104.3	104.0	519.4	134.4
1989/90	226.3	2.4	533.2	103.9	103.7	531.2	136.4
1990/91	231.3	2.5	588.4	101.3	130.1	553.9	170.9
1991/92	222.6	2.4	543.0	111.4	113.8	551.5	162.4
1992/93	222.8	2.5	561.9	113.2	110.9	548.0	176.1
1993/94	222.3	2.5	558.3	101.7	108.0	552.9	181.5
1994/95	214.5	2.4	522.9	101.5	99.6	542.2	162.2
1995/96	218.8	2.5	537.0	99.2	91.9	544.5	154.7
1996/97	230.2	2.5	581.3	104.0	96.7	573.2	162.8
1997/98	228.5	2.7	610.0	104.5	100.9	577.2	195.6
1998/99	225.1	2.6	589.9	102.0	103.6	578.9	206.6
1999/00	215.9	2.7	586.4	112.0	98.9	584.8	208.2
2000/01	218.1	2.7	582.1	102.3	104.1	584.5	205.7
2001/02	214.8	2.7	581.6	108.0	107.4	586.1	201.2
2002/03	214.8	2.6	569.2	107.1	111.7	604.5	165.9
2003/04	209.7	2.6	554.2	103.5	96.3	588.2	131.8
2004/05	217.4	2.9	626.1	112.7	105.5	607.2	150.8
2005/06	218.7	2.8	621.3	113.3	111.4	624.4	147.7
2006/07	212.0	2.8	593.0	115.0	105.7	615.8	124.8
2007/08	217.4	2.8	606.7	108.6	97.3	619.1	112.5
Coarse Grains							
1978/79	340.8	2.2	744.1	90.5	467.0	724.8	143.3
1979/80	341.1	2.2	735.5	97.1	479.9	725.6	153.2
1980/81	340.7	2.1	723.5	107.4	471.4	735.1	142.6
1981/82	348.9	2.2	759.0	96.4	482.9	733.2	168.4
1982/83	338.6	2.3	775.3	92.0	500.6	741.5	202.2
1983/84	333.9	2.0	678.2	92.0	492.7	747.3	133.1
1984/85	335.3	2.4	806.1	98.9	510.0	767.4	171.9
1985/86	341.1	2.4	833.7	81.6	515.9	763.4	242.2
1986/87	337.7	2.4	823.9	85.0	531.0	788.2	277.9
1987/88	324.8	2.4	786.8	88.1	541.6	799.3	263.3
1988/89	324.5	2.2	722.9	99.0	514.3	782.6	203.6
1989/90	322.4	2.5	794.2	105.0	539.3	815.0	182.7
1990/91	317.3	2.6	828.7	88.9	537.3	815.9	195.5
1991/92	322.7	2.5	812.1	96.2	536.2	813.1	194.6
1992/93	326.2	2.7	868.8	91.9	551.4	841.6	219.4
1993/94	318.2	2.5	797.9	86.5	546.2	836.4	180.9
1994/95	323.2	2.7	869.4	98.6	567.5	853.9	196.4
1995/96	314.7	2.5	801.3	88.2	544.7	835.8	162.0
1996/97	323.2	2.8	909.4	94.4	573.0	869.5	201.8
1997/98	311.3	2.8	881.8	85.8	579.5	867.7	215.9

	Area Harvested	Yield	Production TY	Exports	Feed Dom. Consumpti	Domestic Consumpti	Ending Stocks
1998/99	308.8	2.9	891.9	96.7	576.3	870.3	237.6
1999/00	299.8	2.9	878.6	102.4	586.0	882.7	232.9
2000/01	297.0	2.9	863.1	102.7	589.2	884.5	211.5
2001/02	301.4	3.0	894.7	100.5	600.7	907.1	199.1
2002/03	293.2	3.0	875.5	102.7	595.1	903.2	171.3
2003/04	306.6	3.0	915.9	102.4	614.7	945.5	141.7
2004/05	300.1	3.4	1,015.8	101.2	642.3	978.2	179.3
2005/06	301.4	3.2	977.8	108.4	635.1	991.2	166.0
2006/07	304.1	3.2	980.9	114.1	630.4	1,009.1	137.7
2007/08	315.2	3.4	1,058.7	122.8	657.5	1,068.8	127.5

Notes: Wheat and coarse grains trade data are on July June years through 1975/76. From 1976/77 to the present, coarse grains data are on an Oct/Sept trade year.

World Corn and Barley: Supply and Demand

Millions of Metric Tons/Hectares

	Area Harvested	Yield	Production	TY Exports	Feed Dom. Consumpti	Domestic Consumpti	Ending Stocks
Corn							
1978/79	126.0	3.1	392.1	67.1	247.0	378.0	91.4
1979/80	127.3	3.3	425.6	73.2	277.1	405.8	111.2
1980/81	131.2	3.1	408.7	77.8	279.2	417.9	102.5
1981/82	133.0	3.3	441.8	66.9	286.1	417.1	127.2
1982/83	125.2	3.5	439.9	63.2	293.5	417.3	149.8
1983/84	119.7	2.9	348.3	61.1	271.1	409.1	89.0
1984/85	129.0	3.6	458.4	66.1	289.5	429.2	118.2
1985/86	131.0	3.7	479.0	53.8	284.3	419.5	177.7
1986/87	131.9	3.6	475.4	56.9	304.6	448.3	204.9
1987/88	127.0	3.5	450.8	58.8	316.5	458.2	197.5
1988/89	126.1	3.2	400.5	66.0	306.8	452.8	145.2
1989/90	127.3	3.6	461.7	74.5	324.8	474.1	132.8
1990/91	129.2	3.7	481.9	58.8	318.5	473.4	141.2
1991/92	132.6	3.7	493.0	63.0	334.4	493.3	140.8
1992/93	133.2	4.0	535.6	62.6	348.7	512.1	162.5
1993/94	130.7	3.6	475.8	57.4	342.1	509.1	129.2
1994/95	135.3	4.1	559.3	71.9	371.5	535.6	152.9
1995/96	135.0	3.8	516.3	64.8	365.1	536.5	132.7
1996/97	141.6	4.2	592.9	66.7	387.6	560.1	165.6
1997/98	136.3	4.2	574.4	63.1	401.1	573.7	166.3
1998/99	139.3	4.4	605.9	68.7	404.6	581.1	191.0
1999/00	139.0	4.4	608.0	72.3	423.0	605.3	193.7
2000/01	137.2	4.3	590.9	75.9	427.9	610.1	174.5
2001/02	137.9	4.4	600.4	72.8	436.3	623.7	151.2
2002/03	138.0	4.4	603.4	76.9	433.2	628.2	126.5
2003/04	142.3	4.4	627.3	79.1	445.2	648.9	104.9
2004/05	145.1	4.9	715.3	76.0	473.5	688.1	132.1
2005/06	145.9	4.8	696.9	82.6	476.3	703.9	125.1
2006/07	148.3	4.8	705.3	91.0	472.5	722.3	108.2
2007/08	157.8	4.9	772.2	96.1	496.2	777.4	103.0
Barley							
1978/79	80.9	2.2	175.6	10.6	123.9	171.2	24.3
1979/80	84.0	1.8	153.8	10.2	118.5	159.2	18.9
1980/81	78.6	2.0	157.4	13.5	111.2	158.3	18.3
1981/82	81.6	1.8	149.5	14.5	109.4	151.8	16.0
1982/83	78.8	2.0	161.2	16.0	113.4	155.8	21.5
1983/84	79.8	2.0	158.5	15.8	122.0	164.5	15.5
1984/85	79.2	2.2	170.5	17.4	122.4	162.9	23.1
1985/86	80.0	2.2	173.6	17.7	127.8	167.2	29.6
1986/87	79.6	2.2	178.1	18.3	132.1	173.8	33.8
1987/88	78.7	2.2	175.3	18.3	129.7	173.6	33.4
1988/89	76.3	2.2	164.3	19.0	122.0	166.4	31.4
1989/90	73.6	2.3	166.1	18.5	126.2	170.5	27.0
1990/91	73.0	2.5	179.4	19.6	130.8	176.2	30.2
1991/92	76.4	2.2	169.8	19.4	120.3	166.5	33.5
1992/93	73.4	2.3	166.2	16.4	119.1	165.8	33.4
1993/94	74.6	2.3	169.2	18.8	123.9	169.2	33.4
1994/95	72.9	2.2	160.7	15.3	121.0	165.7	28.4
1995/96	68.8	2.1	141.6	13.4	107.8	150.7	19.4
1996/97	66.2	2.3	153.6	17.9	106.3	149.5	23.5
1997/98	64.8	2.4	154.3	12.8	103.8	145.9	31.8

	Area Harvested	Yield	Production TY	Exports	Feed Dom. Consumpti	Domestic Consumpti	Ending Stocks
1998/99	61.0	2.2	136.6	17.8	99.7	140.1	28.4
1999/00	55.3	2.3	127.9	17.8	94.0	132.4	23.9
2000/01	54.7	2.4	133.2	16.2	94.6	134.3	22.8
2001/02	56.7	2.5	143.0	17.2	95.1	136.4	29.3
2002/03	56.3	2.4	134.8	16.3	94.3	136.5	27.6
2003/04	59.6	2.4	142.3	14.8	102.5	147.0	22.9
2004/05	57.9	2.6	152.5	17.0	99.5	142.2	33.1
2005/06	56.0	2.4	136.5	17.4	96.4	140.8	28.8
2006/07	57.0	2.4	137.3	14.4	101.0	145.3	20.8
2007/08	57.0	2.4	133.9	15.0	94.8	139.1	15.6

Notes: Coarse grains trade data are on July June years through 1975/76. From 1976/77 to the present, coarse grains data are on an Oct/Sept trade year.

World Rice: Supply and Demand
Millions of Metric Tons/Hectares

	Area Harvested	Yield	Rough Production	Production TY	Exports	Domestic Consumpti	Ending Stocks
Rice, Milled							
1978/79	143.6	2.7	385.4	262.4	11.8	252.3	54.8
1979/80	141.2	2.7	376.6	256.8	12.0	257.6	54.0
1980/81	144.4	2.7	397.0	269.9	11.9	271.2	52.6
1981/82	144.4	2.8	408.3	277.9	11.3	280.0	50.5
1982/83	140.5	3.0	418.3	285.0	11.2	278.7	56.8
1983/84	144.6	3.1	450.9	306.9	11.9	294.4	69.3
1984/85	144.2	3.2	464.9	316.8	11.0	298.4	87.7
1985/86	144.8	3.2	467.3	318.0	11.8	307.9	97.7
1986/87	144.8	3.3	481.9	316.0	12.9	310.4	103.3
1987/88	141.7	3.3	465.0	315.3	11.4	313.3	105.3
1988/89	146.4	3.4	490.8	332.1	14.0	325.7	111.7
1989/90	147.6	3.5	510.3	345.2	11.7	336.3	120.6
1990/91	146.8	3.5	518.9	351.0	12.3	345.0	126.7
1991/92	147.5	3.5	523.1	353.4	14.4	353.2	126.8
1992/93	146.5	3.6	524.3	354.1	14.9	357.6	123.3
1993/94	145.3	3.6	526.1	354.7	16.6	358.9	119.1
1994/95	147.4	3.7	539.5	363.9	20.8	365.2	117.8
1995/96	148.2	3.7	547.2	368.7	19.7	368.1	118.4
1996/97	149.9	3.8	564.8	381.1	18.9	378.9	120.6
1997/98	151.2	3.8	574.5	387.0	27.6	379.7	127.9
1998/99	152.7	3.8	586.5	394.6	24.8	388.2	134.3
1999/00	155.3	3.9	608.2	408.9	22.8	399.7	143.4
2000/01	151.7	3.9	593.5	398.9	24.4	395.3	147.1
2001/02	150.6	3.9	594.7	399.7	27.9	413.5	133.3
2002/03	145.9	3.9	562.9	378.1	27.6	407.9	103.5
2003/04	148.3	3.9	584.1	391.7	27.2	413.2	82.1
2004/05	150.6	4.0	596.2	400.8	29.2	408.4	74.4
2005/06	152.7	4.1	622.7	418.1	29.4	416.0	76.5
2006/07	153.9	4.1	626.7	420.6	30.3	420.9	76.1
2007/08	154.3	4.1	633.9	425.3	27.5	424.2	77.2

Notes: Stocks, exports and consumption are expressed on a milled basis in marketing years.

ENDNOTES TO GRAIN: WORLD MARKETS AND TRADE

REGIONAL TABLES

North America: Canada, Mexico, the United States.

Central America: Belize, Costa Rica, El Salvador, Guatemala, Honduras, Nicaragua, Panama.

Caribbean: Anguilla, Antigua and Barbuda, Aruba, Bahamas, Barbados, Bermuda, British Virgin Islands, Cayman Islands, Cuba, Dominica, Dominican Republic, French West Indies, Grenada, Guadeloupe, Haiti, Jamaica and Dep, Leeward-Windward Islands, Martinique, Montserrat, Netherlands Antilles, Puerto Rico, Kitts and Nevis, St. Lucia, St. Vincent and the Grenadines, Trinidad and Tobago, Turks and Caicos Islands, Virgin Islands of the U.S.

South America: Argentina, Bolivia, Brazil, Chile, Colombia, Ecuador, Falkland Islands (Islas Malvinas), French Guiana, Guyana, Paraguay, Peru, Suriname, Uruguay, Venezuela.

EU: Austria, Belgium/Luxembourg, Bulgaria, Cyprus, Czech Republic, Denmark, Estonia, Finland, France, Germany, Greece, Hungary, Ireland, Italy, Latvia, Lithuania, Malta, Netherlands, Poland, Portugal, Romania, Slovakia, Slovenia, Spain, Sweden, United Kingdom.

Other Europe: Albania, Azores, Bosnia and Herzegovina, Croatia, Former Yugoslavia, Gibraltar, Iceland, Macedonia, Montenegro, Norway, Serbia, Switzerland.

Former Soviet Union: Armenia, Azerbaijan, Belarus, Georgia, Kazakhstan, Kyrgyzstan, Moldova, Russia, Tajikistan, Turkmenistan, Ukraine, Uzbekistan.

Middle East: Bahrain, Iran, Iraq, Israel, Jordan, Kuwait, Lebanon, Oman, Qatar, Saudi Arabia, Syria, Turkey, United Arab Emirates, Yemen.

North Africa: Algeria, Egypt, Libya, Morocco, Tunisia.

Sub-Saharan Africa: all African countries except North Africa.

East Asia: China, Hong Kong, Japan, South Korea, North Korea, Macau, Mongolia, Taiwan.

South Asia: Afghanistan, Bangladesh, Bhutan, India, Nepal, Pakistan, Sri Lanka, Maldives.

Southeast Asia: Brunei, Burma, Cambodia, Indonesia, Laos, Malaysia, Philippines, Singapore, Thailand, Vietnam.

Oceania: Australia, Fiji, New Zealand, Papua New Guinea.

OTHER NOTES

Stocks: Unless otherwise stated, stock data are based on an aggregate of differing local marketing years and should not be construed as representing world stock levels at a fixed point in time.

Consumption: World totals for consumption reflect total utilization, including food, seed, industrial, feed, and waste; as well as differences in local marketing year imports and local marketing year exports. Consumption statistics for regions and individual countries, however, reflect food, seed, industrial, feed, and waste only.

Trade: All PSD tables are balanced on the different local marketing years. All trade tables contain Trade Year (TY) data which puts all countries on a uniform, 12-month period for analytical comparisons: wheat is July/June; coarse grains, corn, barley, sorghum, oats, and rye

are Oct/Sept; and rice is calendar year. For a complete list of local marketing years, please see the FAS website (<http://www.fas.usda.gov/psdonline/psdAvailability.aspx>).

EU Consolidation: The trade figures starting from 1999/00 represent EU-27 and exclude all intra-trade. For the years 1960/61 through 1998/99, figures are the EU-15 and also exclude all intra-trade. EU-15 member states' data for grains are no longer maintained in the official USDA database. Data for the individual NMS-10, plus Bulgaria and Romania, exists only prior to 1999/00.

Statistics: (1) Wheat trade statistics include wheat, flour, and selected pasta products on a grain equivalent basis. (2) Rice trade statistics include rough, brown, milled, and broken on a milled equivalent basis. (3) Coarse grains statistics include corn, barley, sorghum, oats, rye, millet, and mixed grains but exclude trade in barley malt, millet, and mixed grains.

Unaccounted: This term includes grain in transit, reporting discrepancies in some countries, and trade to countries outside the USDA database.

The Field Crops and Livestock Branch, Industry and Sector Analysis Division, Foreign Agricultural Service, USDA, Washington DC 20250, prepared this circular. Information is gathered from official statistics of foreign governments and other foreign source materials, reports of U.S. agricultural attachés and Foreign Service officers, office research, and related information. Further information may be obtained by writing the Division or telephoning (202) 720-6590.

Note: The previous report in this series was the Grain: World Markets and Trade Foreign Agricultural Service Circular FG 01-08 January 2008. For further details on world grain production, please see World Agricultural Production Foreign Agricultural Service Circular WAP 02-08 February 2008.

This circular is available in its entirety on the World Wide Web via the Foreign Agricultural Service Home Page. The address is: <http://www.fas.usda.gov>