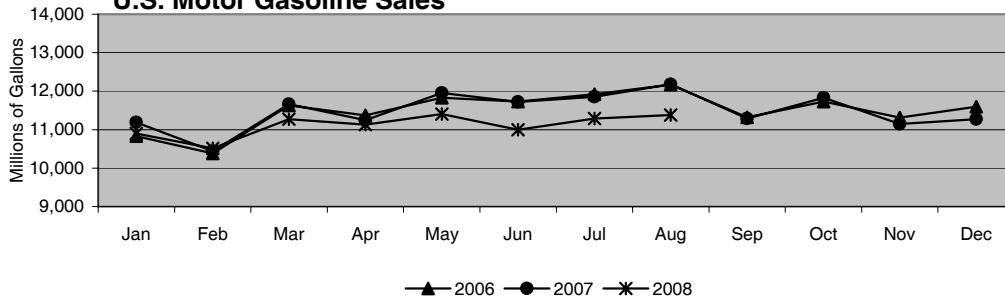


# Prime Supplier Report

## August 2008

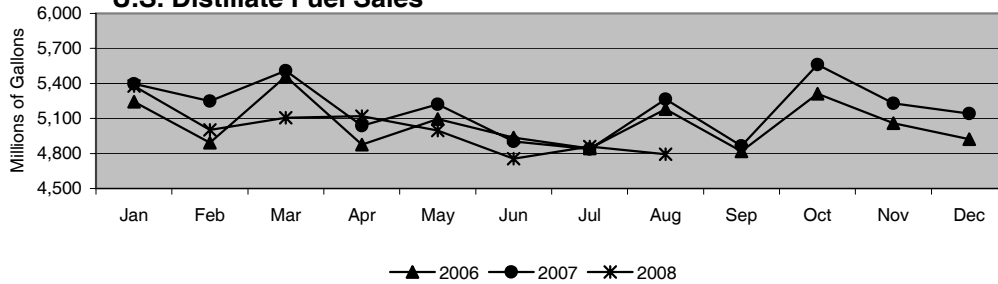
### U.S. Motor Gasoline Sales



#### Adjusted Growth Rates\*

Jul '08 to Aug '08: +0.8%  
 Aug '07 to Aug '08: -6.3%  
 YTD '07 to YTD '08: -3.8%

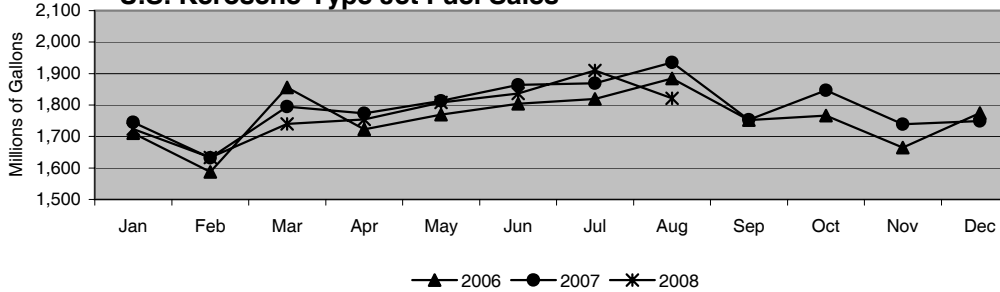
### U.S. Distillate Fuel Sales



#### Adjusted Growth Rates\*

Jul '08 to Aug '08: -1.4%  
 Aug '07 to Aug '08: -9.1%  
 YTD '07 to YTD '08: -4.1%

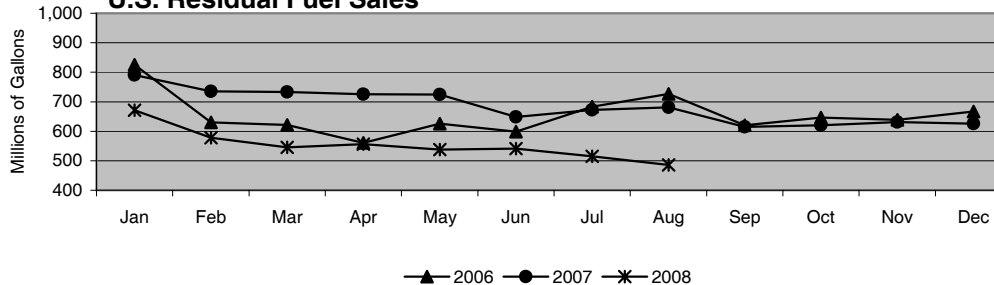
### U.S. Kerosene-Type Jet Fuel Sales



#### Adjusted Growth Rates\*

Jul '08 to Aug '08: -4.6%  
 Aug '07 to Aug '08: -5.1%  
 YTD '07 to YTD '08: -1.7%

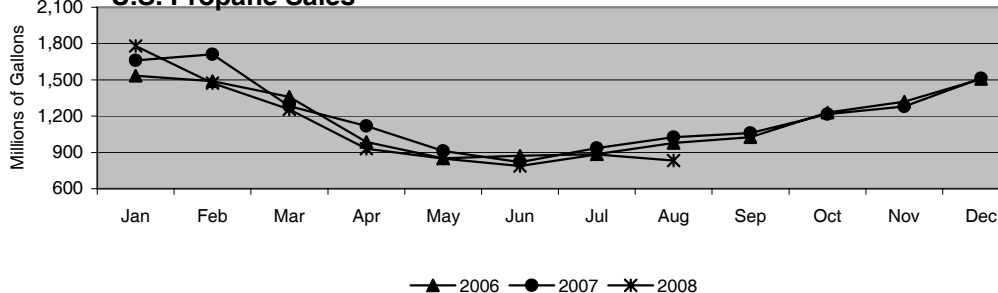
### U.S. Residual Fuel Sales



#### Adjusted Growth Rates\*

Jul '08 to Aug '08: -5.7%  
 Aug '07 to Aug '08: -28.6%  
 YTD '07 to YTD '08: -22.0%

### U.S. Propane Sales

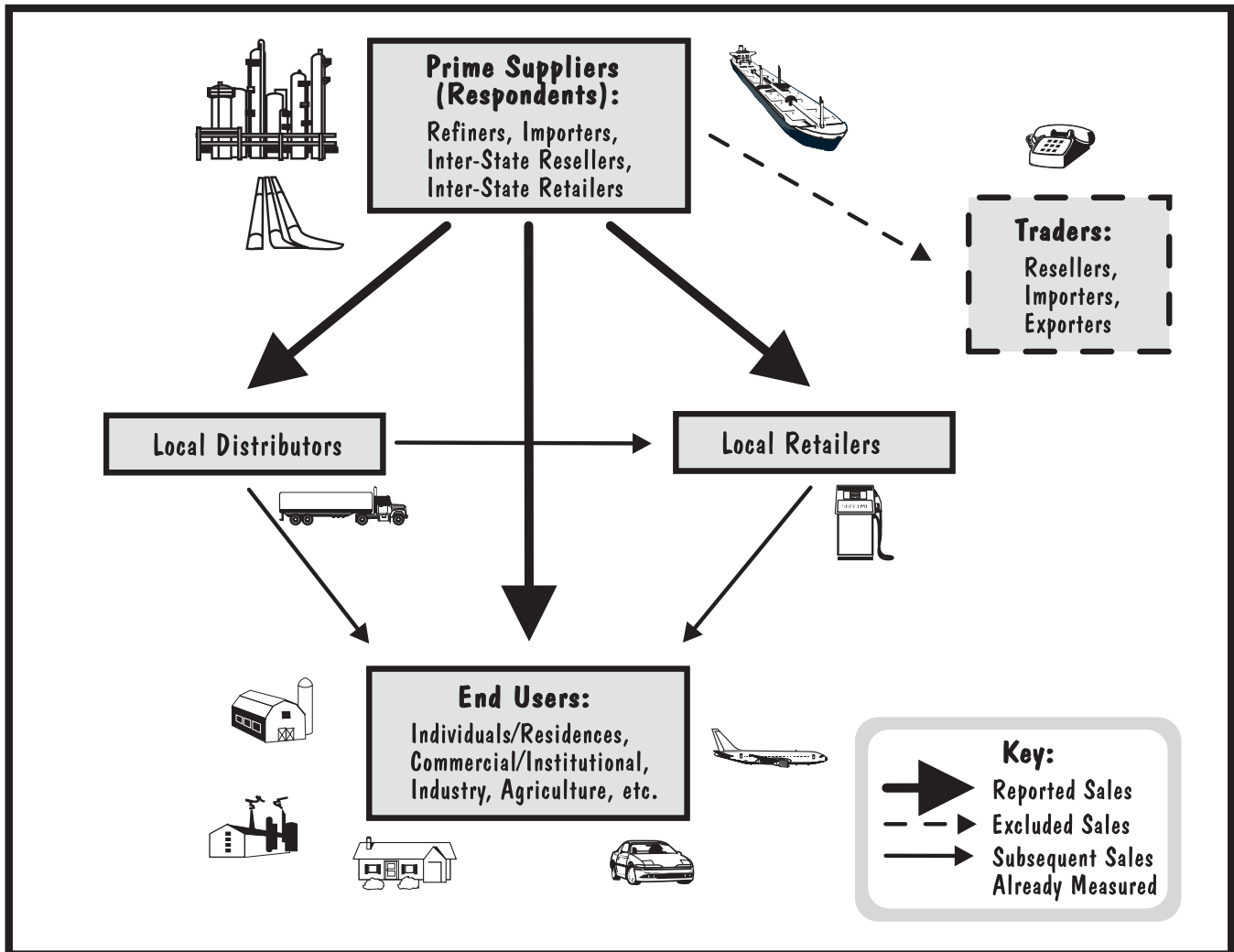


#### Adjusted Growth Rates\*

Jul '08 to Aug '08: -5.7%  
 Aug '07 to Aug '08: -18.5%  
 YTD '07 to YTD '08: -6.5%

\* Calculated on a per day basis.

## Measurement of Petroleum Product Sales Volumes on the EIA-782C



Data for the Prime Supplier Report are collected on Form EIA-782C, "Monthly Report of Prime Supplier Sales of Petroleum Products Sold for Local Consumption." These data measure primary petroleum product deliveries into the States where they are locally marketed and consumed.

The EIA-782C respondent frame is comprised of approximately 185 prime suppliers representing producers, importers, and inter-State resellers and retailers. Each month, respondents report their aggregated sales volumes (combined wholesale and retail) made during the reference month to local distributors, local retailers, and end users in each State where the product was delivered. To avoid double-counting volumes, respondents are instructed to exclude sales to other prime suppliers and traders (see figure above).

The design of the EIA-782C makes possible accurate measurement of sales volumes for consumption at the U.S. and regional levels, as well as for most States. However, because the respondent frame is limited to prime suppliers, the survey cannot track subsequent product movement by local distributors, retailers, and end users (DRE's). This may result in some product volume reported in one State, but actually consumed in a different State (e.g., local distributors who truck product from New Jersey to New York, or airline trading divisions shipping product from State to State via pipeline.) Furthermore, to the extent that DRE's import product (e.g., utilities importing residual fuel), the survey may underestimate actual consumption in those affected States and products.

For further information pertaining to the "Prime Supplier Report" please contact Tammy Heppner at (202) 586-4748. To request data, both current and historical, please contact the National Energy Information Center at (202) 586-8800.

# Prime Supplier Sales Volumes of Petroleum Products by Grade, PAD District, and State

(Thousand Gallons)

Geographic Area Products	March 2008	April 2008	May 2008	June 2008	July 2008	August 2008	Cumulative Year To Date 2007	Cumulative Year To Date 2008	Adjusted Year To Date % Change <sup>1</sup>
<b>United States</b>									
<b>Motor Gasoline</b> .....	11,271,007	11,130,866	11,406,473	10,999,201	11,291,129	11,376,637	92,057,519	88,882,421	-3.8
<b>Regular</b> .....	9,711,700	9,619,758	9,899,908	9,594,749	9,823,737	9,882,062	78,311,720	76,839,409	-2.3
Conventional .....	6,451,011	6,407,136	6,607,785	6,381,195	6,592,108	6,609,650	52,834,197	51,154,163	-3.6
Reformulated .....	3,260,689	3,212,622	3,292,123	3,213,554	3,231,629	3,272,412	25,477,523	25,685,246	0.4
<b>Midgrade</b> .....	599,077	578,959	583,483	548,464	563,922	549,183	4,946,028	4,625,381	-6.9
Conventional .....	442,664	430,230	434,845	411,585	426,011	411,689	3,475,667	3,446,531	-1.2
Reformulated .....	156,413	148,729	148,638	136,879	137,911	137,494	1,470,361	1,178,850	-20.2
<b>Premium</b> .....	960,230	932,149	923,082	855,988	903,470	945,392	8,799,771	7,417,631	-16.1
Conventional .....	499,581	490,154	490,147	455,751	488,151	512,912	4,834,851	3,929,912	-19.1
Reformulated .....	460,649	441,995	432,935	400,237	415,319	432,480	3,964,920	3,487,719	-12.4
<b>Total Distillate</b> .....	5,106,068	5,120,337	4,997,413	4,755,329	4,860,573	4,792,854	41,544,512	40,011,071	-4.1
<b>No. 1 Distillate</b> .....	37,262	21,172	19,687	21,247	22,249	20,257	307,903	295,615	-4.4
<b>No. 2 Distillate</b> .....	5,052,788	5,088,634	4,970,343	4,724,544	4,831,956	4,766,840	41,109,955	39,622,010	-4.0
No. 2 Fuel Oil .....	626,403	394,619	255,113	210,716	203,537	235,181	4,477,624	3,515,539	-21.8
No. 2 Diesel Fuel .....	NA	NA	NA	NA	NA	NA	NA	NA	NA
Ultra Low Sulfur .....	3,446,861	3,686,881	3,715,700	3,545,458	3,634,210	3,602,870	26,113,172	28,237,100	7.7
Low Sulfur .....	878,051	893,355	918,122	873,816	899,899	835,103	6,700,327	7,059,126	4.9
High Sulfur .....	101,473	113,779	81,408	94,554	94,310	93,686	3,818,832	810,245	-78.9
<b>No. 4 Fuel</b> .....	16,018	10,531	7,383	9,538	6,368	5,757	126,654	93,446	-26.5
<b>Aviation Gasoline</b> .....	14,065	15,936	18,222	19,424	19,589	18,537	142,399	130,453	-8.8
<b>Kerosene-Type Jet Fuel</b> .....	1,739,672	1,754,508	1,807,940	1,836,573	1,909,606	1,821,558	14,419,068	14,227,355	-1.7
<b>Kerosene</b> .....	27,760	7,984	6,488	4,918	5,683	8,955	228,971	181,514	-21.1
<b>Propane</b> .....	1,254,819	929,494	848,748	786,978	883,816	833,656	9,359,698	8,789,042	-6.5
<b>Residual Fuel Oil</b> .....	545,163	556,075	538,147	541,039	514,930	485,816	5,660,089	4,431,125	-22.0
Sulfur Content <= 1 % .....	159,499	140,328	104,919	137,468	103,387	114,343	1,793,939	1,159,812	-35.6
Sulfur Content > 1 % .....	385,664	415,747	433,228	403,571	411,543	371,473	3,866,150	3,271,313	-15.7
<b>PAD District I</b>									
<b>Motor Gasoline</b> .....	4,025,869	3,929,454	4,031,707	3,899,297	4,002,786	3,998,264	32,991,473	31,520,650	-4.8
<b>Regular</b> .....	3,499,476	3,422,003	3,529,801	3,437,380	3,527,996	3,518,630	28,046,039	27,536,296	-2.2
Conventional .....	2,147,626	2,095,260	2,181,715	2,111,720	2,178,555	2,173,652	17,657,452	16,923,408	-4.5
Reformulated .....	1,351,850	1,326,743	1,348,086	1,325,660	1,349,441	1,344,978	10,388,587	10,612,888	1.7
<b>Midgrade</b> .....	141,555	135,261	135,751	125,517	125,950	122,223	1,405,475	1,062,422	-24.7
Conventional .....	83,819	78,471	78,854	71,195	71,713	70,021	845,653	618,248	-27.2
Reformulated .....	57,736	56,790	56,897	54,322	54,237	52,202	559,822	444,174	-21.0
<b>Premium</b> .....	384,838	372,190	366,155	336,400	348,840	357,411	3,539,959	2,921,932	-17.8
Conventional .....	196,303	188,012	186,803	168,615	174,153	180,560	1,933,731	1,485,146	-23.5
Reformulated .....	188,535	184,178	179,352	167,785	174,687	176,851	1,606,228	1,436,786	-10.9
<b>Total Distillate</b> .....	1,715,403	W	W	W	W	W	W	W	W
<b>No. 1 Distillate</b> .....	10,610	W	W	W	W	W	W	W	NA
<b>No. 2 Distillate</b> .....	1,690,985	1,499,559	1,390,674	1,298,429	1,308,860	1,310,905	13,682,246	12,215,648	-11.1
No. 2 Fuel Oil .....	574,202	346,687	203,808	157,911	147,694	181,257	4,056,928	3,077,661	-24.4
No. 2 Diesel Fuel .....	NA	NA	NA	NA	NA	NA	NA	NA	NA
Ultra Low Sulfur .....	823,901	860,714	894,707	863,652	874,389	858,690	6,424,500	6,798,854	5.4
Low Sulfur .....	W	W	W	263,159	W	W	2,082,320	W	NA
High Sulfur .....	W	W	W	13,707	W	W	1,118,498	W	NA
<b>No. 4 Fuel</b> .....	13,808	8,021	W	7,119	W	W	W	W	NA
<b>Aviation Gasoline</b> .....	4,352	4,712	4,699	4,652	5,082	4,527	40,280	35,910	-11.2
<b>Kerosene-Type Jet Fuel</b> .....	473,996	515,643	516,594	516,059	535,903	491,486	3,724,414	3,971,401	6.2
<b>Kerosene</b> .....	23,228	W	5,267	W	4,129	7,002	W	W	NA
<b>Propane</b> .....	273,397	180,822	138,813	111,016	116,893	131,329	1,901,992	1,660,642	-13.0
<b>Residual Fuel Oil</b> .....	227,293	211,934	208,835	217,714	184,624	169,429	2,831,237	1,770,812	-37.7
Sulfur Content <= 1 % .....	85,252	64,780	40,843	49,128	36,646	33,307	1,166,602	566,967	-51.6
Sulfur Content > 1 % .....	142,041	147,154	167,992	168,586	147,978	136,122	1,664,635	1,203,845	-28.0

See footnotes at end of table.

# Prime Supplier Sales Volumes of Petroleum Products by Grade, PAD District, and State

(Thousand Gallons) — Continued

Geographic Area Products	March 2008	April 2008	May 2008	June 2008	July 2008	August 2008	Cumulative Year To Date 2007	Cumulative Year To Date 2008	Adjusted Year To Date % Change <sup>1</sup>
<b>Subdistrict IA</b>									
<b>Motor Gasoline</b> .....	521,195	509,790	537,109	530,520	544,748	544,878	4,353,412	4,194,248	-4.1
<b>Regular</b> .....	466,083	455,431	480,922	475,729	487,119	486,152	3,819,724	3,748,689	-2.3
Conventional .....	80,359	76,766	85,994	88,242	96,350	93,494	765,829	682,806	-11.2
Reformulated .....	385,724	378,665	394,928	387,487	390,769	392,658	3,053,895	3,065,883	0.0
<b>Midgrade</b> .....	14,439	13,806	14,609	14,166	14,714	14,490	157,620	114,528	-27.6
Conventional .....	1,655	1,546	1,755	1,810	2,223	2,162	19,811	14,649	-26.4
Reformulated .....	12,784	12,260	12,854	12,356	12,491	12,328	137,809	99,879	-27.8
<b>Premium</b> .....	40,673	40,553	41,578	40,625	42,915	44,236	376,068	331,031	-12.3
Conventional .....	3,518	3,283	4,525	4,912	5,621	5,627	47,898	35,531	-26.1
Reformulated .....	37,155	37,270	37,053	35,713	37,294	38,609	328,170	295,500	-10.3
<b>Total Distillate</b> .....	350,434	W	189,516	W	148,037	156,384	W	W	W
<b>No. 1 Distillate</b> .....	1,863	W	1,128	W	1,066	833	W	W	NA
<b>No. 2 Distillate</b> .....	345,572	248,859	187,534	153,731	146,478	155,018	2,348,710	2,068,072	-12.3
No. 2 Fuel Oil .....	251,232	149,836	82,988	W	44,372	52,349	1,478,342	W	NA
No. 2 Diesel Fuel .....	NA	NA	NA	NA	NA	NA	NA	NA	NA
Ultra Low Sulfur .....	84,685	89,914	94,554	95,351	91,416	93,133	695,621	722,263	3.4
Low Sulfur .....	9,655	9,109	9,992	W	W	9,536	71,081	W	NA
High Sulfur .....	-	-	-	-	W	-	103,666	W	NA
<b>No. 4 Fuel</b> .....	2,999	W	854	W	493	533	W	W	NA
<b>Aviation Gasoline</b> .....	380	512	576	566	739	677	4,616	4,191	-9.6
<b>Kerosene-Type Jet Fuel</b> .....	36,877	49,824	46,006	44,491	53,939	49,943	300,870	353,406	17.0
<b>Kerosene</b> .....	8,265	2,782	2,041	1,524	1,313	1,779	W	39,892	NA
<b>Propane</b> .....	56,451	34,249	25,646	19,294	18,535	19,275	338,367	302,400	-11.0
<b>Residual Fuel Oil</b> .....	32,945	16,507	12,246	11,339	15,811	12,321	307,247	180,054	-41.6
Sulfur Content <= 1 % .....	22,857	6,928	4,568	3,322	3,204	3,604	W	93,675	NA
Sulfur Content > 1 % .....	10,088	9,579	7,678	8,017	12,607	8,717	W	86,379	NA
<b>Connecticut</b>									
<b>Motor Gasoline</b> .....	127,390	126,548	131,516	126,698	126,270	128,836	1,066,957	1,012,571	-5.5
<b>Regular</b> .....	111,072	110,240	115,431	111,423	110,614	112,810	915,044	885,430	-3.6
Conventional .....	-	-	-	-	-	-	-	-	-
Reformulated .....	111,072	110,240	115,431	111,423	110,614	112,810	915,044	885,430	-3.6
<b>Midgrade</b> .....	3,173	3,006	3,083	2,868	2,980	2,892	30,865	23,995	-22.6
Conventional .....	-	-	-	-	-	-	-	-	-
Reformulated .....	3,173	3,006	3,083	2,868	2,980	2,892	30,865	23,995	-22.6
<b>Premium</b> .....	13,145	13,302	13,002	12,407	12,676	13,134	121,048	103,146	-15.1
Conventional .....	-	W	-	-	-	-	-	W	NA
Reformulated .....	13,145	W	13,002	12,407	12,676	13,134	121,048	W	NA
<b>Total Distillate</b> .....	W	W	W	W	W	W	W	W	W
<b>No. 1 Distillate</b> .....	W	W	W	W	W	W	W	W	NA
<b>No. 2 Distillate</b> .....	87,660	61,738	43,701	36,336	33,441	35,769	525,373	508,270	-3.7
No. 2 Fuel Oil .....	65,092	36,605	18,994	12,232	10,474	12,770	327,434	321,502	-2.2
No. 2 Diesel Fuel .....	NA	NA	NA	NA	NA	NA	NA	NA	NA
Ultra Low Sulfur .....	20,883	W	W	W	21,566	W	170,175	W	NA
Low Sulfur .....	1,685	W	W	W	W	W	W	W	NA
High Sulfur .....	-	-	-	-	W	-	W	W	NA
<b>No. 4 Fuel</b> .....	W	W	W	W	W	W	W	W	NA
<b>Aviation Gasoline</b> .....	W	W	W	68	W	W	W	W	NA
<b>Kerosene-Type Jet Fuel</b> .....	5,915	6,495	5,615	4,706	7,559	5,626	50,843	48,721	-4.6
<b>Kerosene</b> .....	284	104	63	31	99	33	W	W	NA
<b>Propane</b> .....	4,595	3,087	2,794	2,124	2,123	2,208	28,563	27,787	-3.1
<b>Residual Fuel Oil</b> .....	1,004	341	W	146	124	W	W	W	NA
Sulfur Content <= 1 % .....	W	W	W	W	W	W	W	W	NA
Sulfur Content > 1 % .....	W	W	W	W	W	W	W	W	NA

See footnotes at end of table.

# Prime Supplier Sales Volumes of Petroleum Products by Grade, PAD District, and State

(Thousand Gallons) — Continued

Geographic Area Products	March 2008	April 2008	May 2008	June 2008	July 2008	August 2008	Cumulative Year To Date 2007	Cumulative Year To Date 2008	Adjusted Year To Date % Change <sup>1</sup>
<b>Maine</b>									
<b>Motor Gasoline</b> .....	53,170	50,497	56,401	58,255	63,988	63,293	511,920	451,540	-12.2
<b>Regular</b> .....	50,338	47,864	52,855	54,456	59,600	58,906	473,614	423,762	-10.9
Conventional .....	50,338	47,864	52,855	54,456	59,600	58,906	473,614	423,762	-10.9
Reformulated .....	-	-	-	-	-	-	-	-	-
<b>Midgrade</b> .....	956	842	964	1,011	1,272	1,118	11,478	8,149	-29.3
Conventional .....	956	842	964	1,011	1,272	1,118	11,478	8,149	-29.3
Reformulated .....	-	-	-	-	-	-	-	-	-
<b>Premium</b> .....	1,876	1,791	2,582	2,788	3,116	3,269	26,828	19,629	-27.1
Conventional .....	1,876	1,791	2,582	2,788	3,116	3,269	26,828	19,629	-27.1
Reformulated .....	-	-	-	-	-	-	-	-	-
<b>Total Distillate</b> .....	W	W	W	W	W	W	W	W	W
<b>No. 1 Distillate</b> .....	W	W	W	W	W	W	W	W	NA
<b>No. 2 Distillate</b> .....	67,025	44,759	36,806	29,696	27,862	28,532	461,308	386,296	-16.6
No. 2 Fuel Oil .....	49,112	29,164	19,128	11,621	10,002	10,857	296,063	243,357	-18.1
No. 2 Diesel Fuel .....	NA	NA	NA	NA	NA	NA	NA	NA	NA
Ultra Low Sulfur .....	W	W	W	W	W	W	145,143	W	NA
Low Sulfur .....	W	W	W	W	W	W	W	W	NA
High Sulfur .....	-	-	-	-	-	-	W	-	NA
<b>No. 4 Fuel</b> .....	W	W	W	W	W	W	W	W	NA
<b>Aviation Gasoline</b> .....	W	W	W	W	W	W	W	W	NA
<b>Kerosene-Type Jet Fuel</b> .....	6,633	4,944	4,144	3,899	3,552	3,611	41,550	37,343	-10.5
<b>Kerosene</b> .....	4,277	1,556	959	700	314	848	28,095	21,729	-23.0
<b>Propane</b> .....	10,130	6,645	4,536	3,846	3,548	3,527	53,528	53,961	0.4
<b>Residual Fuel Oil</b> .....	9,914	8,955	6,591	6,717	6,692	7,869	89,040	72,770	-18.6
Sulfur Content <= 1 % .....	W	W	W	W	W	W	W	W	NA
Sulfur Content > 1 % .....	W	W	W	W	W	W	W	W	NA
<b>Massachusetts</b>									
<b>Motor Gasoline</b> .....	228,512	222,337	231,043	229,926	231,266	231,475	1,850,246	1,809,663	-2.6
<b>Regular</b> .....	202,539	196,743	205,024	204,621	205,299	204,938	1,608,193	1,603,583	-0.7
Conventional .....	-	-	-	-	-	-	-	-	-
Reformulated .....	202,539	196,743	205,024	204,621	205,299	204,938	1,608,193	1,603,583	-0.7
<b>Midgrade</b> .....	7,391	7,049	7,495	7,241	7,171	7,039	82,753	57,740	-30.5
Conventional .....	-	-	-	-	-	-	-	-	-
Reformulated .....	7,391	7,049	7,495	7,241	7,171	7,039	82,753	57,740	-30.5
<b>Premium</b> .....	18,582	18,545	18,524	18,064	18,796	19,498	159,300	148,340	-7.3
Conventional .....	-	-	-	-	-	-	-	-	-
Reformulated .....	18,582	18,545	18,524	18,064	18,796	19,498	159,300	148,340	-7.3
<b>Total Distillate</b> .....	W	W	W	W	W	W	W	W	W
<b>No. 1 Distillate</b> .....	W	W	W	W	W	W	W	W	NA
<b>No. 2 Distillate</b> .....	98,743	75,731	54,872	45,952	44,510	47,190	717,275	603,898	-16.2
No. 2 Fuel Oil .....	69,316	43,432	20,415	11,921	11,180	13,313	434,013	345,333	-20.8
No. 2 Diesel Fuel .....	NA	NA	NA	NA	NA	NA	NA	NA	NA
Ultra Low Sulfur .....	24,607	27,616	29,550	30,491	28,195	28,970	203,710	220,417	7.8
Low Sulfur .....	4,820	4,683	4,907	3,540	5,135	4,907	W	38,148	NA
High Sulfur .....	-	-	-	-	-	-	W	-	NA
<b>No. 4 Fuel</b> .....	1,394	734	392	258	218	246	W	5,836	NA
<b>Aviation Gasoline</b> .....	144	208	178	229	345	279	1,812	1,706	-6.2
<b>Kerosene-Type Jet Fuel</b> .....	22,276	36,368	33,965	33,185	40,233	38,425	W	248,822	NA
<b>Kerosene</b> .....	W	W	W	W	W	W	W	W	NA
<b>Propane</b> .....	4,643	3,289	2,722	2,064	2,088	1,944	35,866	27,455	-23.8
<b>Residual Fuel Oil</b> .....	17,357	4,068	2,875	2,146	1,921	2,112	127,093	63,539	-50.2
Sulfur Content <= 1 % .....	16,728	W	W	W	W	W	W	W	NA
Sulfur Content > 1 % .....	629	W	W	W	W	W	W	W	NA

See footnotes at end of table.

# Prime Supplier Sales Volumes of Petroleum Products by Grade, PAD District, and State

(Thousand Gallons) — Continued

Geographic Area Products	March 2008	April 2008	May 2008	June 2008	July 2008	August 2008	Cumulative Year To Date 2007	Cumulative Year To Date 2008	Adjusted Year To Date % Change <sup>1</sup>
<b>New Hampshire</b>									
<b>Motor Gasoline</b> .....	47,255	46,570	48,454	48,794	52,092	48,792	400,905	386,372	-4.0
<b>Regular</b> .....	43,374	42,743	44,291	44,507	47,479	44,219	361,789	352,872	-2.9
Conventional .....	8,257	8,067	9,718	10,648	12,204	10,745	96,246	77,157	-20.2
Reformulated .....	35,117	34,676	34,573	33,859	35,275	33,474	265,543	275,715	3.4
<b>Midgrade</b> .....	1,264	1,259	1,319	1,350	1,336	1,429	12,424	10,577	-15.2
Conventional .....	251	270	313	351	444	534	W	2,711	NA
Reformulated .....	1,013	989	1,006	999	892	895	9,214	7,866	-15.0
<b>Premium</b> .....	2,617	2,568	2,844	2,937	3,277	3,144	26,692	22,923	-14.5
Conventional .....	440	W	556	746	809	774	6,862	W	NA
Reformulated .....	2,177	W	2,288	2,191	2,468	2,370	19,830	W	NA
<b>Total Distillate</b> .....	W	W	W	W	W	W	W	W	W
<b>No. 1 Distillate</b> .....	W	W	W	W	W	W	W	W	NA
<b>No. 2 Distillate</b> .....	37,564	26,593	20,724	15,963	16,336	16,397	260,338	229,884	-12.1
No. 2 Fuel Oil .....	27,474	15,911	9,758	5,461	5,255	5,814	153,420	142,494	-7.5
No. 2 Diesel Fuel .....	NA	NA	NA	NA	NA	NA	NA	NA	NA
Ultra Low Sulfur .....	9,648	10,254	10,346	9,980	10,228	10,104	84,003	82,442	-2.3
Low Sulfur .....	442	428	620	522	853	479	W	4,948	NA
High Sulfur .....	-	-	-	-	-	-	W	-	NA
<b>No. 4 Fuel</b> .....	W	W	W	W	W	W	W	W	NA
<b>Aviation Gasoline</b> .....	W	189	W	192	W	W	W	W	NA
<b>Kerosene-Type Jet Fuel</b> .....	425	452	428	W	448	493	3,478	W	NA
<b>Kerosene</b> .....	1,099	481	237	83	42	NA	W	W	NA
<b>Propane</b> .....	22,253	11,699	8,592	5,891	5,800	6,112	118,663	106,392	-10.7
<b>Residual Fuel Oil</b> .....	3,186	2,166	1,834	1,505	6,084	1,222	27,117	22,488	-17.4
Sulfur Content <= 1 % .....	W	W	W	W	W	W	W	W	NA
Sulfur Content > 1 % .....	W	W	W	W	W	W	W	W	NA
<b>Rhode Island</b>									
<b>Motor Gasoline</b> .....	41,454	41,474	44,409	41,883	44,383	46,545	308,084	337,265	9.0
<b>Regular</b> .....	36,996	37,006	39,900	37,584	39,581	41,436	265,115	301,155	13.1
Conventional .....	-	-	-	-	-	-	-	-	-
Reformulated .....	36,996	37,006	39,900	37,584	39,581	41,436	265,115	301,155	13.1
<b>Midgrade</b> .....	1,207	1,216	1,270	1,248	1,448	1,502	14,977	10,278	-31.7
Conventional .....	-	-	-	-	-	-	-	-	-
Reformulated .....	1,207	1,216	1,270	1,248	1,448	1,502	14,977	10,278	-31.7
<b>Premium</b> .....	3,251	3,252	3,239	3,051	3,354	3,607	27,992	25,832	-8.1
Conventional .....	-	-	-	-	-	-	-	-	-
Reformulated .....	3,251	3,252	3,239	3,051	3,354	3,607	27,992	25,832	-8.1
<b>Total Distillate</b> .....	W	W	W	W	W	W	W	W	W
<b>No. 1 Distillate</b> .....	W	W	W	W	W	W	W	W	NA
<b>No. 2 Distillate</b> .....	36,361	26,015	19,372	16,307	15,094	17,723	255,477	225,479	-12.1
No. 2 Fuel Oil .....	27,393	16,507	9,391	5,608	4,744	6,353	183,240	146,982	-20.1
No. 2 Diesel Fuel .....	NA	NA	NA	NA	NA	NA	NA	NA	NA
Ultra Low Sulfur .....	7,833	8,310	W	9,524	W	W	57,655	W	NA
Low Sulfur .....	1,135	1,198	W	1,175	W	W	W	W	NA
High Sulfur .....	-	-	-	-	-	-	W	-	NA
<b>No. 4 Fuel</b> .....	530	W	W	W	W	W	1,312	W	NA
<b>Aviation Gasoline</b> .....	-	-	-	-	-	-	W	-	NA
<b>Kerosene-Type Jet Fuel</b> .....	W	W	W	W	1,286	813	7,469	W	NA
<b>Kerosene</b> .....	W	W	W	W	W	W	W	W	NA
<b>Propane</b> .....	3,510	2,851	2,759	2,604	2,452	2,695	41,688	32,823	-21.6
<b>Residual Fuel Oil</b> .....	737	382	W	335	419	387	W	W	NA
Sulfur Content <= 1 % .....	737	382	W	335	419	387	W	W	NA
Sulfur Content > 1 % .....	-	-	-	-	-	-	-	-	-

See footnotes at end of table.

# Prime Supplier Sales Volumes of Petroleum Products by Grade, PAD District, and State

(Thousand Gallons) — Continued

Geographic Area Products	March 2008	April 2008	May 2008	June 2008	July 2008	August 2008	Cumulative Year To Date 2007	Cumulative Year To Date 2008	Adjusted Year To Date % Change <sup>1</sup>
<b>Vermont</b>									
<b>Motor Gasoline</b> .....	23,414	22,364	25,286	24,964	26,749	25,937	215,300	196,837	-9.0
<b>Regular</b> .....	21,764	20,835	23,421	23,138	24,546	23,843	195,969	181,887	-7.6
Conventional .....	21,764	20,835	23,421	23,138	24,546	23,843	195,969	181,887	-7.6
Reformulated .....	-	-	-	-	-	-	-	-	-
<b>Midgrade</b> .....	448	434	478	448	507	510	5,123	3,789	-26.3
Conventional .....	448	434	478	448	507	510	5,123	3,789	-26.3
Reformulated .....	-	-	-	-	-	-	-	-	-
<b>Premium</b> .....	1,202	1,095	1,387	1,378	1,696	1,584	14,208	11,161	-21.8
Conventional .....	1,202	1,095	1,387	1,378	1,696	1,584	14,208	11,161	-21.8
Reformulated .....	-	-	-	-	-	-	-	-	-
<b>Total Distillate</b> .....	W	W	W	W	W	W	W	W	W
<b>No. 1 Distillate</b> .....	W	W	W	W	W	W	W	W	NA
<b>No. 2 Distillate</b> .....	18,219	14,023	12,059	9,477	9,235	9,407	128,939	114,245	-11.8
No. 2 Fuel Oil .....	12,845	8,217	5,302	W	2,717	3,242	84,172	W	NA
No. 2 Diesel Fuel .....	NA	NA	NA	NA	NA	NA	NA	NA	NA
Ultra Low Sulfur .....	W	4,757	5,581	5,251	5,422	5,474	34,935	W	NA
Low Sulfur .....	W	1,049	1,176	W	1,096	691	W	W	NA
High Sulfur .....	-	-	-	-	-	-	W	-	NA
<b>No. 4 Fuel</b> .....	W	W	W	W	W	W	W	W	NA
<b>Aviation Gasoline</b> .....	W	W	W	W	W	W	W	W	NA
<b>Kerosene-Type Jet Fuel</b> .....	W	W	W	791	861	975	8,307	W	NA
<b>Kerosene</b> .....	993	429	145	66	101	90	7,093	4,572	-35.8
<b>Propane</b> .....	11,320	6,678	4,243	2,765	2,524	2,789	60,059	53,982	-10.5
<b>Residual Fuel Oil</b> .....	747	595	542	490	571	W	W	W	NA
Sulfur Content <= 1 % .....	W	W	W	W	W	W	W	W	NA
Sulfur Content > 1 % .....	W	W	W	W	W	W	W	W	NA
<b>Subdistrict IB</b>									
<b>Motor Gasoline</b> .....	1,441,983	1,441,961	1,481,924	1,447,953	1,501,744	1,515,491	12,019,677	11,580,664	-4.0
<b>Regular</b> .....	1,248,068	1,247,647	1,288,241	1,265,159	1,310,853	1,322,868	10,221,957	10,054,181	-2.0
Conventional .....	439,409	454,112	489,256	478,816	505,686	522,376	4,067,146	3,728,348	-8.7
Reformulated .....	808,659	793,535	798,985	786,343	805,167	800,492	6,154,811	6,325,833	2.4
<b>Midgrade</b> .....	44,284	43,718	44,686	42,863	43,940	42,500	426,970	347,068	-19.0
Conventional .....	8,499	8,396	9,316	8,876	9,877	9,899	89,631	71,075	-21.0
Reformulated .....	35,785	35,322	35,370	33,987	34,063	32,601	337,339	275,993	-18.5
<b>Premium</b> .....	149,631	150,596	148,997	139,931	146,951	150,123	1,370,750	1,179,415	-14.3
Conventional .....	22,321	27,342	28,995	29,068	30,802	33,550	298,089	220,477	-26.3
Reformulated .....	127,310	123,254	120,002	110,863	116,149	116,573	1,072,661	958,938	-11.0
<b>Total Distillate</b> .....	W	W	W	W	W	W	W	W	W
<b>No. 1 Distillate</b> .....	W	W	W	W	W	W	W	W	NA
<b>No. 2 Distillate</b> .....	669,078	561,818	513,964	488,168	511,344	516,419	5,497,232	4,784,793	-13.3
No. 2 Fuel Oil .....	291,483	169,470	94,604	84,196	79,580	102,984	2,068,632	1,582,283	-23.8
No. 2 Diesel Fuel .....	NA	NA	NA	NA	NA	NA	NA	NA	NA
Ultra Low Sulfur .....	295,119	309,232	331,874	320,009	339,775	325,863	2,467,272	2,508,662	1.3
Low Sulfur .....	81,355	82,289	86,738	W	91,310	86,774	557,418	W	NA
High Sulfur .....	1,121	827	748	W	679	798	403,910	W	NA
<b>No. 4 Fuel</b> .....	W	6,420	4,081	6,626	3,407	W	W	W	NA
<b>Aviation Gasoline</b> .....	764	847	1,263	1,053	1,205	1,197	8,490	7,912	-7.2
<b>Kerosene-Type Jet Fuel</b> .....	234,851	233,075	249,300	245,038	251,971	248,964	1,808,965	1,898,023	4.5
<b>Kerosene</b> .....	11,637	W	W	W	W	4,270	W	W	NA
<b>Propane</b> .....	111,269	78,979	60,642	46,453	47,082	46,409	761,894	649,527	-15.1
<b>Residual Fuel Oil</b> .....	159,179	126,828	128,254	141,014	114,486	110,852	1,745,962	1,164,905	-33.6
Sulfur Content <= 1 % .....	54,940	43,762	29,455	43,010	30,590	28,528	877,694	420,333	-52.3
Sulfur Content > 1 % .....	104,239	83,066	98,799	98,004	83,896	82,324	868,268	744,572	-14.6

See footnotes at end of table.

# Prime Supplier Sales Volumes of Petroleum Products by Grade, PAD District, and State

(Thousand Gallons) — Continued

Geographic Area Products	March 2008	April 2008	May 2008	June 2008	July 2008	August 2008	Cumulative Year To Date 2007	Cumulative Year To Date 2008	Adjusted Year To Date % Change <sup>1</sup>
<b>Delaware</b>									
<b>Motor Gasoline</b> .....	34,117	34,640	35,068	36,441	38,315	38,288	299,418	283,003	-5.9
<b>Regular</b> .....	30,716	31,128	31,708	33,120	34,211	34,263	262,272	254,585	-3.3
Conventional .....	-	-	-	-	-	-	-	-	-
Reformulated .....	30,716	31,128	31,708	33,120	34,211	34,263	262,272	254,585	-3.3
<b>Midgrade</b> .....	883	886	833	893	1,105	989	10,813	7,232	-33.4
Conventional .....	-	-	-	-	-	-	-	-	-
Reformulated .....	883	886	833	893	1,105	989	10,813	7,232	-33.4
<b>Premium</b> .....	2,518	2,626	2,527	2,428	2,999	3,036	26,333	21,186	-19.9
Conventional .....	-	-	-	-	-	-	-	-	-
Reformulated .....	2,518	2,626	2,527	2,428	2,999	3,036	26,333	21,186	-19.9
<b>Total Distillate</b> .....	W	W	W	W	W	W	W	W	W
<b>No. 1 Distillate</b> .....	-	-	-	-	-	-	-	-	-
<b>No. 2 Distillate</b> .....	8,914	8,499	7,584	W	W	8,544	W	W	NA
No. 2 Fuel Oil .....	W	W	W	W	W	W	W	W	NA
No. 2 Diesel Fuel .....	NA	NA	NA	NA	NA	NA	NA	NA	NA
Ultra Low Sulfur .....	W	6,286	W	6,082	6,224	6,864	51,005	W	NA
Low Sulfur .....	598	752	730	W	1,015	944	W	W	NA
High Sulfur .....	W	W	-	-	W	-	W	W	NA
<b>No. 4 Fuel</b> .....	W	W	W	W	W	W	W	W	NA
<b>Aviation Gasoline</b> .....	W	W	W	W	W	W	W	W	NA
<b>Kerosene-Type Jet Fuel</b> .....	408	363	428	453	303	409	2,715	3,036	11.4
<b>Kerosene</b> .....	W	W	W	W	W	W	W	W	NA
<b>Propane</b> .....	5,074	4,784	3,649	2,739	2,585	2,504	48,618	34,885	-28.5
<b>Residual Fuel Oil</b> .....	11,134	3,770	2,869	6,991	3,102	2,628	61,524	48,661	-21.2
Sulfur Content <= 1 % .....	W	W	W	W	W	W	W	W	NA
Sulfur Content > 1 % .....	W	W	W	W	W	W	W	W	NA
<b>District of Columbia</b>									
<b>Motor Gasoline</b> .....	6,889	6,950	7,076	6,694	6,170	5,493	60,106	53,349	-11.6
<b>Regular</b> .....	4,780	4,847	5,116	4,956	4,491	3,911	40,334	37,899	-6.4
Conventional .....	-	-	-	-	-	-	-	-	-
Reformulated .....	4,780	4,847	5,116	4,956	4,491	3,911	40,334	37,899	-6.4
<b>Midgrade</b> .....	671	674	644	537	530	520	6,373	4,867	-23.9
Conventional .....	-	-	-	-	-	-	-	-	-
Reformulated .....	671	674	644	537	530	520	6,373	4,867	-23.9
<b>Premium</b> .....	1,438	1,429	1,316	1,201	1,149	1,062	13,399	10,583	-21.3
Conventional .....	-	-	-	-	-	-	-	-	-
Reformulated .....	1,438	1,429	1,316	1,201	1,149	1,062	13,399	10,583	-21.3
<b>Total Distillate</b> .....	W	W	W	W	W	W	W	W	W
<b>No. 1 Distillate</b> .....	-	-	-	-	-	-	-	-	-
<b>No. 2 Distillate</b> .....	W	1,195	851	W	W	W	W	W	NA
No. 2 Fuel Oil .....	W	W	W	W	W	W	W	W	NA
No. 2 Diesel Fuel .....	NA	NA	NA	NA	NA	NA	NA	NA	NA
Ultra Low Sulfur .....	W	W	W	462	W	W	3,474	W	NA
Low Sulfur .....	594	587	551	W	636	539	W	W	NA
High Sulfur .....	-	-	-	-	-	-	W	-	NA
<b>No. 4 Fuel</b> .....	-	-	-	W	W	W	W	W	NA
<b>Aviation Gasoline</b> .....	-	-	-	-	-	-	-	-	-
<b>Kerosene-Type Jet Fuel</b> .....	-	-	-	-	-	-	-	-	-
<b>Kerosene</b> .....	W	-	-	-	-	-	W	W	NA
<b>Propane</b> .....	-	-	-	-	-	-	-	-	-
<b>Residual Fuel Oil</b> .....	-	-	-	-	-	-	-	-	-
Sulfur Content <= 1 % .....	-	-	-	-	-	-	-	-	-
Sulfur Content > 1 % .....	-	-	-	-	-	-	-	-	-

See footnotes at end of table.



# Prime Supplier Sales Volumes of Petroleum Products by Grade, PAD District, and State

(Thousand Gallons) — Continued

Geographic Area Products	March 2008	April 2008	May 2008	June 2008	July 2008	August 2008	Cumulative Year To Date 2007	Cumulative Year To Date 2008	Adjusted Year To Date % Change <sup>1</sup>
<b>Maryland</b>									
<b>Motor Gasoline</b> .....	198,906	202,189	203,364	199,381	201,676	198,721	1,666,974	1,580,271	-5.6
<b>Regular</b> .....	166,034	169,281	170,979	168,983	170,890	166,873	1,356,766	1,323,467	-2.9
Conventional .....	10,019	14,268	18,868	18,243	19,306	18,639	172,390	114,134	-34.1
Reformulated .....	156,015	155,013	152,111	150,740	151,584	148,234	1,184,376	1,209,333	1.7
<b>Midgrade</b> .....	8,528	8,550	8,699	8,095	8,023	7,916	88,515	66,982	-24.6
Conventional .....	215	279	432	394	462	W	5,467	W	NA
Reformulated .....	8,313	8,271	8,267	7,701	7,561	W	83,048	W	NA
<b>Premium</b> .....	24,344	24,358	23,686	22,303	22,763	23,932	221,693	189,822	-14.7
Conventional .....	771	1,137	1,559	1,411	W	W	16,926	W	NA
Reformulated .....	23,573	23,221	22,127	20,892	W	W	204,767	W	NA
<b>Total Distillate</b> .....	W	W	W	W	W	W	W	W	W
<b>No. 1 Distillate</b> .....	-	-	-	-	-	-	W	-	NA
<b>No. 2 Distillate</b> .....	67,502	57,885	57,382	54,934	56,358	57,694	542,890	499,787	-8.3
No. 2 Fuel Oil .....	16,504	10,670	4,469	6,023	W	8,010	153,795	W	NA
No. 2 Diesel Fuel .....	NA	NA	NA	NA	NA	NA	NA	NA	NA
Ultra Low Sulfur .....	31,048	W	34,472	32,242	W	W	215,563	W	NA
Low Sulfur .....	W	12,663	W	W	17,974	16,107	117,116	W	NA
High Sulfur .....	W	W	W	W	W	W	56,416	W	NA
<b>No. 4 Fuel</b> .....	-	-	W	-	-	-	W	W	NA
<b>Aviation Gasoline</b> .....	W	W	W	W	W	W	W	W	NA
<b>Kerosene-Type Jet Fuel</b> .....	11,839	11,349	12,589	11,994	11,930	12,199	W	94,024	NA
<b>Kerosene</b> .....	569	188	W	143	86	141	W	W	NA
<b>Propane</b> .....	12,700	9,386	6,747	4,889	4,764	5,384	90,451	74,908	-17.5
<b>Residual Fuel Oil</b> .....	2,031	1,560	1,505	908	5,609	1,975	53,070	22,324	-58.1
Sulfur Content <= 1 % .....	W	W	W	W	W	W	W	W	NA
Sulfur Content > 1 % .....	W	W	W	W	W	W	W	W	NA
<b>New Jersey</b>									
<b>Motor Gasoline</b> .....	352,951	348,354	358,510	347,952	360,907	360,692	2,824,063	2,794,364	-1.5
<b>Regular</b> .....	299,107	295,005	305,061	299,900	309,755	311,282	2,374,455	2,383,170	0.0
Conventional .....	-	-	-	-	-	-	-	-	-
Reformulated .....	299,107	295,005	305,061	299,900	309,755	311,282	2,374,455	2,383,170	0.0
<b>Midgrade</b> .....	10,197	10,132	10,358	10,019	9,997	9,516	93,049	79,819	-14.6
Conventional .....	-	-	-	-	-	-	-	-	-
Reformulated .....	10,197	10,132	10,358	10,019	9,997	9,516	93,049	79,819	-14.6
<b>Premium</b> .....	43,647	43,217	43,091	38,033	41,155	39,894	356,559	331,375	-7.4
Conventional .....	-	-	-	-	W	W	-	W	NA
Reformulated .....	43,647	43,217	43,091	38,033	W	W	356,559	W	NA
<b>Total Distillate</b> .....	W	W	W	W	W	W	W	W	W
<b>No. 1 Distillate</b> .....	W	-	-	-	-	-	W	W	NA
<b>No. 2 Distillate</b> .....	163,518	139,587	124,505	120,212	130,003	124,534	1,347,080	1,158,861	-14.3
No. 2 Fuel Oil .....	57,858	37,675	13,926	12,797	W	W	444,888	W	NA
No. 2 Diesel Fuel .....	NA	NA	NA	NA	NA	NA	NA	NA	NA
Ultra Low Sulfur .....	88,607	81,961	91,420	89,697	94,329	88,932	712,615	701,950	-1.9
Low Sulfur .....	17,053	W	19,159	W	W	W	110,118	W	NA
High Sulfur .....	-	W	-	W	W	W	79,459	W	NA
<b>No. 4 Fuel</b> .....	W	W	W	W	W	W	W	W	NA
<b>Aviation Gasoline</b> .....	265	243	356	266	285	431	W	2,395	NA
<b>Kerosene-Type Jet Fuel</b> .....	111,173	114,365	123,159	116,195	113,888	108,324	888,020	891,482	0.0
<b>Kerosene</b> .....	1,464	W	W	W	W	W	W	W	NA
<b>Propane</b> .....	13,264	9,725	11,484	7,495	7,523	7,943	101,343	87,911	-13.6
<b>Residual Fuel Oil</b> .....	34,125	20,185	38,651	48,304	27,876	24,131	382,039	264,067	-31.2
Sulfur Content <= 1 % .....	5,637	6,860	10,019	14,535	W	6,191	W	W	NA
Sulfur Content > 1 % .....	28,488	13,325	28,632	33,769	W	17,940	W	W	NA

See footnotes at end of table.

# Prime Supplier Sales Volumes of Petroleum Products by Grade, PAD District, and State

(Thousand Gallons) — Continued

Geographic Area Products	March 2008	April 2008	May 2008	June 2008	July 2008	August 2008	Cumulative Year To Date 2007	Cumulative Year To Date 2008	Adjusted Year To Date % Change <sup>1</sup>
<b>New York</b>									
<b>Motor Gasoline</b> .....	459,251	450,768	469,065	460,213	483,465	475,952	3,808,166	3,671,713	-4.0
<b>Regular</b> .....	391,563	383,855	403,398	395,887	415,957	409,107	3,176,271	3,142,050	-1.5
Conventional .....	172,681	170,992	194,934	187,287	198,839	199,677	1,619,558	1,454,068	-10.6
Reformulated .....	218,882	212,863	208,464	208,600	217,118	209,430	1,556,713	1,687,982	8.0
<b>Midgrade</b> .....	15,116	14,942	15,475	15,283	15,997	14,971	149,824	120,508	-19.9
Conventional .....	2,983	3,062	3,558	3,359	3,972	3,752	38,033	26,740	-30.0
Reformulated .....	12,133	11,880	11,917	11,924	12,025	11,219	111,791	93,768	-16.5
<b>Premium</b> .....	52,572	51,971	50,192	49,043	51,511	51,874	482,071	409,155	-15.5
Conventional .....	8,747	10,384	11,126	10,428	11,851	12,311	109,156	82,357	-24.9
Reformulated .....	43,825	41,587	39,066	38,615	39,660	39,563	372,915	326,798	-12.7
<b>Total Distillate</b> .....	W	W	W	W	W	W	W	W	W
<b>No. 1 Distillate</b> .....	W	W	W	W	W	W	W	W	NA
<b>No. 2 Distillate</b> .....	W	157,141	134,231	122,025	121,146	W	W	W	NA
No. 2 Fuel Oil .....	130,969	73,928	42,592	30,918	28,964	30,528	786,624	670,259	-15.1
No. 2 Diesel Fuel .....	NA	NA	NA	NA	NA	NA	NA	NA	NA
Ultra Low Sulfur .....	62,801	69,688	78,032	78,115	79,331	77,048	562,070	W	NA
Low Sulfur .....	W	13,173	13,336	12,774	12,541	W	W	W	NA
High Sulfur .....	353	352	271	218	310	W	W	W	NA
<b>No. 4 Fuel</b> .....	9,973	5,933	3,655	2,140	2,229	2,125	71,175	50,604	-29.2
<b>Aviation Gasoline</b> .....	82	131	188	154	182	165	W	1,113	NA
<b>Kerosene-Type Jet Fuel</b> .....	65,805	63,960	66,876	67,756	74,693	79,173	456,445	540,208	17.9
<b>Kerosene</b> .....	6,272	W	W	W	W	2,311	W	W	NA
<b>Propane</b> .....	41,033	27,178	19,221	15,782	14,835	14,816	226,141	220,457	-2.9
<b>Residual Fuel Oil</b> .....	100,247	88,825	77,781	77,582	69,212	76,154	1,140,004	756,204	-33.9
Sulfur Content <= 1 % .....	40,629	30,700	15,597	25,479	18,826	19,409	569,822	293,446	-48.7
Sulfur Content > 1 % .....	59,618	58,125	62,184	52,103	50,386	56,745	570,182	462,758	-19.2
<b>Pennsylvania</b>									
<b>Motor Gasoline</b> .....	389,869	399,060	408,841	397,272	411,211	436,345	3,360,950	3,197,964	-5.2
<b>Regular</b> .....	355,868	363,531	371,979	362,313	375,549	397,432	3,011,859	2,913,010	-3.7
Conventional .....	256,709	268,852	275,454	273,286	287,541	304,060	2,275,198	2,160,146	-5.4
Reformulated .....	99,159	94,679	96,525	89,027	88,008	93,372	736,661	752,864	1.8
<b>Midgrade</b> .....	8,889	8,534	8,677	8,036	8,288	8,588	78,396	67,660	-14.0
Conventional .....	5,301	5,055	5,326	5,123	5,443	W	46,131	W	NA
Reformulated .....	3,588	3,479	3,351	2,913	2,845	W	32,265	W	NA
<b>Premium</b> .....	25,112	26,995	28,185	26,923	27,374	30,325	270,695	217,294	-20.1
Conventional .....	12,803	15,821	16,310	17,229	17,376	19,625	172,007	128,881	-25.4
Reformulated .....	12,309	11,174	11,875	9,694	9,998	10,700	98,688	88,413	-10.8
<b>Total Distillate</b> .....	W	W	W	W	W	W	W	W	W
<b>No. 1 Distillate</b> .....	W	W	W	W	W	W	W	W	NA
<b>No. 2 Distillate</b> .....	219,983	197,511	189,411	181,307	194,445	203,867	1,984,471	1,691,138	-15.1
No. 2 Fuel Oil .....	82,887	45,485	32,662	32,707	W	W	658,164	W	NA
No. 2 Diesel Fuel .....	NA	NA	NA	NA	NA	NA	NA	NA	NA
Ultra Low Sulfur .....	106,546	116,736	121,751	113,411	124,750	119,356	922,545	923,990	-0.3
Low Sulfur .....	30,483	W	W	W	W	W	242,000	W	NA
High Sulfur .....	67	W	W	W	W	W	161,762	W	NA
<b>No. 4 Fuel</b> .....	W	W	W	W	W	W	W	W	NA
<b>Aviation Gasoline</b> .....	316	361	598	527	558	489	3,621	3,513	-3.4
<b>Kerosene-Type Jet Fuel</b> .....	45,626	43,038	46,248	48,640	51,157	48,859	382,688	369,273	-3.9
<b>Kerosene</b> .....	3,229	521	460	288	271	1,099	27,723	25,735	-7.6
<b>Propane</b> .....	39,198	27,906	19,541	15,548	17,375	15,762	295,341	231,366	-22.0
<b>Residual Fuel Oil</b> .....	11,642	12,488	7,448	7,229	8,687	5,964	109,325	73,649	-32.9
Sulfur Content <= 1 % .....	W	W	W	W	W	W	W	W	NA
Sulfur Content > 1 % .....	W	W	W	W	W	W	W	W	NA

See footnotes at end of table.

# Prime Supplier Sales Volumes of Petroleum Products by Grade, PAD District, and State

(Thousand Gallons) — Continued

Geographic Area Products	March 2008	April 2008	May 2008	June 2008	July 2008	August 2008	Cumulative Year To Date 2007	Cumulative Year To Date 2008	Adjusted Year To Date % Change <sup>1</sup>
<b>Subdistrict IC</b>									
<b>Motor Gasoline</b> .....	2,062,691	1,977,703	2,012,674	1,920,824	1,956,294	1,937,895	16,618,384	15,745,738	-5.6
<b>Regular</b> .....	1,785,325	1,718,925	1,760,638	1,696,492	1,730,024	1,709,610	14,004,358	13,733,426	-2.3
Conventional .....	1,627,858	1,564,382	1,606,465	1,544,662	1,576,519	1,557,782	12,824,477	12,512,254	-2.8
Reformulated .....	157,467	154,543	154,173	151,830	153,505	151,828	1,179,881	1,221,172	3.1
<b>Midgrade</b> .....	82,832	77,737	76,456	68,488	67,296	65,233	820,885	600,826	-27.1
Conventional .....	73,665	68,529	67,783	60,509	59,613	57,960	736,211	532,524	-28.0
Reformulated .....	9,167	9,208	8,673	7,979	7,683	7,273	84,674	68,302	-19.7
<b>Premium</b> .....	194,534	181,041	175,580	155,844	158,974	163,052	1,793,141	1,411,486	-21.6
Conventional .....	170,464	157,387	153,283	134,635	137,730	141,383	1,587,744	1,229,138	-22.9
Reformulated .....	24,070	23,654	22,297	21,209	21,244	21,669	205,397	182,348	-11.6
<b>Total Distillate</b> .....	W	W	W	W	W	W	W	W	W
<b>No. 1 Distillate</b> .....	W	W	W	W	W	W	W	W	NA
<b>No. 2 Distillate</b> .....	676,335	688,882	689,176	656,530	651,038	639,468	5,836,304	5,362,783	-8.5
No. 2 Fuel Oil .....	31,487	27,381	26,216	W	23,742	25,924	509,954	W	NA
No. 2 Diesel Fuel .....	NA	NA	NA	NA	NA	NA	NA	NA	NA
Ultra Low Sulfur .....	444,097	461,568	468,279	448,292	443,198	439,694	3,261,607	3,567,929	8.9
Low Sulfur .....	W	W	W	172,869	W	W	1,453,821	W	NA
High Sulfur .....	W	W	W	W	W	W	610,922	W	NA
<b>No. 4 Fuel</b> .....	W	W	W	W	W	W	W	W	NA
<b>Aviation Gasoline</b> .....	3,208	3,353	2,860	3,033	3,138	2,653	27,174	23,807	-12.7
<b>Kerosene-Type Jet Fuel</b> .....	202,268	232,744	221,288	226,530	229,993	192,579	1,614,579	1,719,972	6.1
<b>Kerosene</b> .....	3,326	872	W	465	W	953	W	W	NA
<b>Propane</b> .....	105,677	67,594	52,525	45,269	51,276	65,645	801,731	708,715	-12.0
<b>Residual Fuel Oil</b> .....	35,169	68,599	68,335	65,361	54,327	46,256	778,028	425,853	-45.5
Sulfur Content <= 1 % .....	7,455	14,090	6,820	2,796	2,852	1,175	W	52,959	NA
Sulfur Content > 1 % .....	27,714	54,509	61,515	62,565	51,475	45,081	W	372,894	NA
<b>Florida</b>									
<b>Motor Gasoline</b> .....	736,526	693,613	689,331	636,233	636,006	621,912	5,760,753	5,396,879	-6.7
<b>Regular</b> .....	623,195	588,571	587,074	549,173	550,479	535,773	4,711,000	4,598,152	-2.8
Conventional .....	623,195	588,571	587,074	549,173	550,479	535,773	4,711,000	4,598,152	-2.8
Reformulated .....	-	-	-	-	-	-	-	-	-
<b>Midgrade</b> .....	36,141	33,832	33,392	28,721	27,320	26,834	345,659	256,096	-26.2
Conventional .....	36,141	33,832	33,392	28,721	27,320	26,834	345,659	256,096	-26.2
Reformulated .....	-	-	-	-	-	-	-	-	-
<b>Premium</b> .....	77,190	71,210	68,865	58,339	58,207	59,305	704,094	542,631	-23.2
Conventional .....	77,190	71,210	68,865	58,339	58,207	59,305	704,094	542,631	-23.2
Reformulated .....	-	-	-	-	-	-	-	-	-
<b>Total Distillate</b> .....	W	W	W	W	W	W	W	W	W
<b>No. 1 Distillate</b> .....	-	-	-	-	-	-	W	-	NA
<b>No. 2 Distillate</b> .....	179,187	179,604	W	160,857	W	W	W	W	NA
No. 2 Fuel Oil .....	W	W	W	-	-	-	W	W	NA
No. 2 Diesel Fuel .....	NA	NA	NA	NA	NA	NA	NA	NA	NA
Ultra Low Sulfur .....	137,155	136,622	137,283	125,551	123,377	120,656	1,103,715	1,056,334	-4.7
Low Sulfur .....	36,637	36,954	32,887	W	31,355	26,636	217,158	W	NA
High Sulfur .....	W	W	W	W	W	W	W	W	NA
<b>No. 4 Fuel</b> .....	W	W	-	-	-	-	W	W	NA
<b>Aviation Gasoline</b> .....	1,888	2,050	1,823	1,787	1,564	1,404	14,058	13,760	-2.5
<b>Kerosene-Type Jet Fuel</b> .....	110,642	133,488	111,109	114,737	125,525	113,957	778,665	928,827	18.8
<b>Kerosene</b> .....	W	W	W	g	W	W	W	W	NA
<b>Propane</b> .....	19,356	17,280	15,483	12,492	17,139	14,170	152,991	138,353	-9.9
<b>Residual Fuel Oil</b> .....	13,724	46,266	47,672	48,994	34,106	26,220	526,732	254,582	-51.9
Sulfur Content <= 1 % .....	6,351	11,215	W	W	W	W	W	W	NA
Sulfur Content > 1 % .....	7,373	35,051	W	W	W	W	W	W	NA

See footnotes at end of table.

# Prime Supplier Sales Volumes of Petroleum Products by Grade, PAD District, and State

(Thousand Gallons) — Continued

Geographic Area Products	March 2008	April 2008	May 2008	June 2008	July 2008	August 2008	Cumulative Year To Date 2007	Cumulative Year To Date 2008	Adjusted Year To Date % Change <sup>1</sup>
<b>Georgia</b>									
<b>Motor Gasoline</b> .....	409,562	374,554	378,106	369,217	375,661	381,009	3,186,187	3,049,662	-4.7
<b>Regular</b> .....	353,117	324,343	330,239	325,268	331,147	334,736	2,684,114	2,650,604	-1.7
Conventional .....	353,117	324,343	330,239	325,268	331,147	334,736	2,684,114	2,650,604	-1.7
Reformulated .....	-	-	-	-	-	-	-	-	-
<b>Midgrade</b> .....	18,225	16,620	15,985	15,341	15,115	15,194	176,582	132,109	-25.5
Conventional .....	18,225	16,620	15,985	15,341	15,115	15,194	176,582	132,109	-25.5
Reformulated .....	-	-	-	-	-	-	-	-	-
<b>Premium</b> .....	38,220	33,591	31,882	28,608	29,399	31,079	325,491	266,949	-18.3
Conventional .....	38,220	33,591	31,882	28,608	29,399	31,079	325,491	266,949	-18.3
Reformulated .....	-	-	-	-	-	-	-	-	-
<b>Total Distillate</b> .....	W	W	W	W	W	W	W	W	W
<b>No. 1 Distillate</b> .....	W	-	-	-	W	W	W	W	NA
<b>No. 2 Distillate</b> .....	151,879	154,371	156,717	151,289	146,662	147,598	1,344,931	1,203,390	-10.9
No. 2 Fuel Oil .....	W	W	W	W	W	W	W	W	NA
No. 2 Diesel Fuel .....	NA	NA	NA	NA	NA	NA	NA	NA	NA
Ultra Low Sulfur .....	98,527	101,056	102,119	99,979	97,524	100,260	727,817	784,871	7.4
Low Sulfur .....	46,049	44,430	45,839	43,877	41,463	39,411	444,243	355,418	-20.3
High Sulfur .....	W	W	W	W	W	W	W	W	NA
<b>No. 4 Fuel</b> .....	-	-	-	-	-	-	-	-	-
<b>Aviation Gasoline</b> .....	482	258	269	517	586	436	6,006	3,621	-40.0
<b>Kerosene-Type Jet Fuel</b> .....	20,606	23,328	21,540	19,965	20,090	19,554	159,643	159,568	-0.5
<b>Kerosene</b> .....	W	98	61	83	W	W	W	W	NA
<b>Propane</b> .....	16,985	10,093	8,660	7,521	6,957	10,870	123,566	116,524	-6.1
<b>Residual Fuel Oil</b> .....	W	W	W	W	W	W	W	W	NA
Sulfur Content <= 1 % .....	-	-	-	-	-	-	W	-	NA
Sulfur Content > 1 % .....	W	W	W	W	W	W	W	W	NA
<b>North Carolina</b>									
<b>Motor Gasoline</b> .....	339,004	337,598	348,967	334,423	343,480	346,530	2,830,079	2,700,586	-5.0
<b>Regular</b> .....	302,927	303,780	316,640	305,925	314,198	317,046	2,462,873	2,439,471	-1.4
Conventional .....	302,927	303,780	316,640	305,925	314,198	317,046	2,462,873	2,439,471	-1.4
Reformulated .....	-	-	-	-	-	-	-	-	-
<b>Midgrade</b> .....	8,138	7,516	7,152	6,026	6,123	5,669	95,141	57,250	-40.1
Conventional .....	8,138	7,516	7,152	6,026	6,123	5,669	95,141	57,250	-40.1
Reformulated .....	-	-	-	-	-	-	-	-	-
<b>Premium</b> .....	27,939	26,302	25,175	22,472	23,159	23,815	272,065	203,865	-25.4
Conventional .....	27,939	26,302	25,175	22,472	23,159	23,815	272,065	203,865	-25.4
Reformulated .....	-	-	-	-	-	-	-	-	-
<b>Total Distillate</b> .....	W	W	W	W	W	W	W	W	W
<b>No. 1 Distillate</b> .....	W	W	W	W	W	W	W	W	NA
<b>No. 2 Distillate</b> .....	115,363	118,769	118,883	115,774	113,537	112,171	961,515	930,359	-3.6
No. 2 Fuel Oil .....	4,482	W	W	4,086	W	W	W	W	NA
No. 2 Diesel Fuel .....	NA	NA	NA	NA	NA	NA	NA	NA	NA
Ultra Low Sulfur .....	73,931	77,784	78,260	76,274	75,904	75,417	521,731	600,037	14.5
Low Sulfur .....	W	36,193	36,102	W	32,932	31,527	214,105	W	NA
High Sulfur .....	W	W	W	W	W	W	W	W	NA
<b>No. 4 Fuel</b> .....	-	-	-	-	-	W	-	W	NA
<b>Aviation Gasoline</b> .....	517	699	436	231	545	567	3,970	3,933	-1.3
<b>Kerosene-Type Jet Fuel</b> .....	13,669	19,778	25,420	25,493	24,175	6,929	158,693	164,031	2.9
<b>Kerosene</b> .....	W	W	W	W	W	445	W	W	NA
<b>Propane</b> .....	32,609	17,708	13,199	11,706	13,347	23,494	248,797	219,623	-12.1
<b>Residual Fuel Oil</b> .....	10,890	10,848	7,401	8,108	8,786	9,934	102,811	80,197	-22.3
Sulfur Content <= 1 % .....	W	W	W	W	W	W	W	W	NA
Sulfur Content > 1 % .....	W	W	W	W	W	W	W	W	NA

See footnotes at end of table.

# Prime Supplier Sales Volumes of Petroleum Products by Grade, PAD District, and State

(Thousand Gallons) — Continued

Geographic Area Products	March 2008	April 2008	May 2008	June 2008	July 2008	August 2008	Cumulative Year To Date 2007	Cumulative Year To Date 2008	Adjusted Year To Date % Change <sup>1</sup>
<b>South Carolina</b>									
<b>Motor Gasoline</b> .....	208,171	204,845	215,696	206,249	214,967	209,487	1,704,725	1,644,629	-3.9
<b>Regular</b> .....	185,766	183,344	193,715	186,692	194,621	189,283	1,481,837	1,474,134	-0.9
Conventional .....	185,766	183,344	193,715	186,692	194,621	189,283	1,481,837	1,474,134	-0.9
Reformulated .....	-	-	-	-	-	-	-	-	-
<b>Midgrade</b> .....	6,613	6,395	6,636	6,000	6,224	5,750	67,003	50,954	-24.3
Conventional .....	6,613	6,395	6,636	6,000	6,224	5,750	67,003	50,954	-24.3
Reformulated .....	-	-	-	-	-	-	-	-	-
<b>Premium</b> .....	15,792	15,106	15,345	13,557	14,122	14,454	155,885	119,541	-23.6
Conventional .....	15,792	15,106	15,345	13,557	14,122	14,454	155,885	119,541	-23.6
Reformulated .....	-	-	-	-	-	-	-	-	-
<b>Total Distillate</b> .....	W	W	W	W	W	W	W	W	W
<b>No. 1 Distillate</b> .....	W	W	-	-	-	W	W	W	NA
<b>No. 2 Distillate</b> .....	74,633	77,762	80,383	74,363	W	72,223	605,439	W	NA
No. 2 Fuel Oil .....	W	W	W	W	W	W	W	W	NA
No. 2 Diesel Fuel .....	NA	NA	NA	NA	NA	NA	NA	NA	NA
Ultra Low Sulfur .....	49,172	51,703	54,706	50,664	50,579	50,826	333,816	399,466	19.2
Low Sulfur .....	22,943	23,237	23,052	21,676	22,140	19,530	W	W	NA
High Sulfur .....	W	W	W	W	W	W	44,100	W	NA
<b>No. 4 Fuel</b> .....	W	W	-	-	-	-	W	W	NA
<b>Aviation Gasoline</b> .....	108	W	62	W	91	71	W	W	NA
<b>Kerosene-Type Jet Fuel</b> .....	5,700	5,925	5,646	5,524	5,628	5,331	45,343	44,947	-1.3
<b>Kerosene</b> .....	456	129	182	88	W	W	W	W	NA
<b>Propane</b> .....	13,927	9,132	6,844	7,010	6,352	9,624	108,084	97,278	-10.4
<b>Residual Fuel Oil</b> .....	W	W	W	W	W	W	W	W	NA
Sulfur Content <= 1 % .....	W	W	W	W	W	W	W	W	NA
Sulfur Content > 1 % .....	W	W	W	W	W	W	W	W	NA
<b>Virginia</b>									
<b>Motor Gasoline</b> .....	309,733	308,621	321,213	315,783	323,976	316,465	2,652,437	2,482,528	-6.8
<b>Regular</b> .....	264,525	264,164	277,426	274,200	281,561	274,536	2,219,935	2,130,736	-4.4
Conventional .....	107,058	109,621	123,253	122,370	128,056	122,708	1,040,054	909,564	-12.9
Reformulated .....	157,467	154,543	154,173	151,830	153,505	151,828	1,179,881	1,221,172	3.1
<b>Midgrade</b> .....	12,272	12,004	11,877	11,044	10,948	10,335	121,439	92,852	-23.9
Conventional .....	3,105	2,796	3,204	3,065	3,265	3,062	36,765	24,550	-33.5
Reformulated .....	9,167	9,208	8,673	7,979	7,683	7,273	84,674	68,302	-19.7
<b>Premium</b> .....	32,936	32,453	31,910	30,539	31,467	31,594	311,063	258,940	-17.1
Conventional .....	8,866	8,799	9,613	9,330	10,223	9,925	105,666	76,592	-27.8
Reformulated .....	24,070	23,654	22,297	21,209	21,244	21,669	205,397	182,348	-11.6
<b>Total Distillate</b> .....	W	W	W	W	W	W	W	W	W
<b>No. 1 Distillate</b> .....	W	-	-	-	-	W	W	W	NA
<b>No. 2 Distillate</b> .....	117,157	120,748	119,031	114,289	116,903	115,576	1,039,973	953,693	-8.7
No. 2 Fuel Oil .....	11,481	6,546	6,863	3,375	4,351	6,623	164,212	67,777	-58.9
No. 2 Diesel Fuel .....	NA	NA	NA	NA	NA	NA	NA	NA	NA
Ultra Low Sulfur .....	66,025	75,768	75,614	75,896	75,659	72,673	431,290	571,377	31.9
Low Sulfur .....	W	W	W	W	W	W	338,816	W	NA
High Sulfur .....	W	W	W	W	W	W	105,655	W	NA
<b>No. 4 Fuel</b> .....	W	W	W	W	W	W	W	W	NA
<b>Aviation Gasoline</b> .....	186	227	145	348	273	64	2,008	1,350	-33.0
<b>Kerosene-Type Jet Fuel</b> .....	50,945	49,526	56,823	60,036	53,798	46,045	466,703	416,825	-11.1
<b>Kerosene</b> .....	1,026	W	W	W	W	286	W	W	NA
<b>Propane</b> .....	18,900	11,872	7,025	5,370	5,702	5,298	132,125	113,355	-14.6
<b>Residual Fuel Oil</b> .....	3,260	3,664	6,464	3,037	4,687	4,300	41,360	35,524	-14.5
Sulfur Content <= 1 % .....	W	W	4,048	W	W	387	W	W	NA
Sulfur Content > 1 % .....	W	W	2,416	W	W	3,913	W	W	NA

See footnotes at end of table.

# Prime Supplier Sales Volumes of Petroleum Products by Grade, PAD District, and State

(Thousand Gallons) — Continued

Geographic Area Products	March 2008	April 2008	May 2008	June 2008	July 2008	August 2008	Cumulative Year To Date 2007	Cumulative Year To Date 2008	Adjusted Year To Date % Change <sup>1</sup>
<b>West Virginia</b>									
<b>Motor Gasoline</b> .....	59,695	58,472	59,361	58,919	62,204	62,492	484,203	471,454	-3.0
<b>Regular</b> .....	55,795	54,723	55,544	55,234	58,018	58,236	444,599	440,329	-1.4
Conventional .....	55,795	54,723	55,544	55,234	58,018	58,236	444,599	440,329	-1.4
Reformulated .....	-	-	-	-	-	-	-	-	-
<b>Midgrade</b> .....	1,443	1,370	1,414	1,356	1,566	1,451	15,061	11,565	-23.5
Conventional .....	1,443	1,370	1,414	1,356	1,566	1,451	15,061	11,565	-23.5
Reformulated .....	-	-	-	-	-	-	-	-	-
<b>Premium</b> .....	2,457	2,379	2,403	2,329	2,620	2,805	24,543	19,560	-20.6
Conventional .....	2,457	2,379	2,403	2,329	2,620	2,805	24,543	19,560	-20.6
Reformulated .....	-	-	-	-	-	-	-	-	-
<b>Total Distillate</b> .....	W	W	W	W	W	W	W	W	W
<b>No. 1 Distillate</b> .....	W	W	W	W	W	W	W	W	NA
<b>No. 2 Distillate</b> .....	38,116	37,628	W	39,958	W	W	W	W	NA
No. 2 Fuel Oil .....	W	W	W	W	W	W	W	W	NA
No. 2 Diesel Fuel .....	NA	NA	NA	NA	NA	NA	NA	NA	NA
Ultra Low Sulfur .....	19,287	18,635	20,297	19,928	20,155	19,862	143,238	155,844	8.4
Low Sulfur .....	7,375	6,957	6,669	7,257	7,657	7,398	W	59,304	NA
High Sulfur .....	W	W	W	W	W	W	W	W	NA
<b>No. 4 Fuel</b> .....	-	-	-	-	-	-	-	-	-
<b>Aviation Gasoline</b> .....	27	W	125	W	79	111	W	W	NA
<b>Kerosene-Type Jet Fuel</b> .....	706	699	750	775	777	763	5,532	5,774	3.9
<b>Kerosene</b> .....	W	W	W	W	W	W	W	W	NA
<b>Propane</b> .....	3,900	1,509	1,314	1,170	1,779	2,189	36,168	23,582	-35.1
<b>Residual Fuel Oil</b> .....	2,364	2,653	2,197	1,129	W	1,885	W	W	NA
Sulfur Content <= 1 % .....	W	W	W	W	W	W	W	W	NA
Sulfur Content > 1 % .....	W	W	W	W	W	W	W	W	NA
<b>PAD District II</b>									
<b>Motor Gasoline</b> .....	3,021,090	3,026,392	3,095,908	3,001,055	3,127,009	3,119,969	24,889,243	24,220,560	-3.1
<b>Regular</b> .....	2,567,463	2,576,563	2,631,700	2,551,901	2,648,537	2,646,938	21,237,532	20,525,658	-3.7
Conventional .....	2,157,647	2,178,138	2,219,844	2,155,188	2,243,377	2,241,641	18,040,708	17,287,188	-4.6
Reformulated .....	409,816	398,425	411,856	396,713	405,160	405,297	3,196,824	3,238,470	0.9
<b>Midgrade</b> .....	301,071	296,994	301,127	290,997	302,783	287,507	2,109,753	2,392,388	12.9
Conventional .....	281,639	278,780	282,956	273,801	285,266	270,349	1,931,306	2,244,624	15.7
Reformulated .....	19,432	18,214	18,171	17,196	17,517	17,158	178,447	147,764	-17.5
<b>Premium</b> .....	152,556	152,835	163,081	158,157	175,689	185,524	1,541,958	1,302,514	-15.9
Conventional .....	110,514	111,628	123,825	119,996	135,947	144,081	1,182,037	976,291	-17.7
Reformulated .....	42,042	41,207	39,256	38,161	39,742	41,443	359,921	326,223	-9.7
<b>Total Distillate</b> .....	W	W	W	W	W	W	W	W	W
<b>No. 1 Distillate</b> .....	13,722	5,503	5,347	5,416	6,057	5,505	124,399	120,034	-3.9
<b>No. 2 Distillate</b> .....	1,461,075	1,524,830	1,581,656	1,489,028	1,518,574	1,489,456	11,542,097	11,832,011	2.1
No. 2 Fuel Oil .....	W	W	W	W	W	W	158,879	W	NA
No. 2 Diesel Fuel .....	NA	NA	NA	NA	NA	NA	NA	NA	NA
Ultra Low Sulfur .....	1,111,327	1,172,167	1,210,726	1,140,313	1,158,507	1,150,395	8,154,567	9,041,703	10.4
Low Sulfur .....	W	W	W	301,348	W	W	2,340,853	W	NA
High Sulfur .....	13,473	10,730	16,569	W	W	W	887,798	W	NA
<b>No. 4 Fuel</b> .....	-	-	W	W	W	W	W	W	NA
<b>Aviation Gasoline</b> .....	2,896	3,550	5,004	5,292	5,887	5,419	33,441	33,201	-1.1
<b>Kerosene-Type Jet Fuel</b> .....	333,544	342,137	337,253	350,511	347,948	354,972	2,727,140	2,678,716	-2.2
<b>Kerosene</b> .....	3,707	954	W	W	W	W	W	W	NA
<b>Propane</b> .....	357,192	210,619	169,074	162,238	224,440	218,407	2,452,552	2,436,870	-1.0
<b>Residual Fuel Oil</b> .....	20,635	24,879	25,607	22,843	22,204	19,868	200,788	178,049	-11.7
Sulfur Content <= 1 % .....	W	W	W	W	W	W	W	W	NA
Sulfur Content > 1 % .....	W	W	W	W	W	W	W	W	NA

See footnotes at end of table.

# Prime Supplier Sales Volumes of Petroleum Products by Grade, PAD District, and State

(Thousand Gallons) — Continued

Geographic Area Products	March 2008	April 2008	May 2008	June 2008	July 2008	August 2008	Cumulative Year To Date 2007	Cumulative Year To Date 2008	Adjusted Year To Date % Change <sup>1</sup>
<b>Illinois</b>									
<b>Motor Gasoline</b> .....	421,598	420,446	426,733	410,215	422,101	419,261	3,463,260	3,352,130	-3.6
<b>Regular</b> .....	346,090	346,316	352,816	346,045	358,007	356,585	2,824,308	2,783,445	-1.9
Conventional .....	118,646	129,102	128,766	128,644	138,930	138,998	1,091,914	1,011,027	-7.8
Reformulated .....	227,444	217,214	224,050	217,401	219,077	217,587	1,732,394	1,772,418	1.9
<b>Midgrade</b> .....	41,233	40,940	41,781	33,071	31,770	29,177	340,079	303,891	-11.0
Conventional .....	27,436	27,981	28,820	20,958	19,413	16,902	210,774	198,522	-6.2
Reformulated .....	13,797	12,959	12,961	12,113	12,357	12,275	129,305	105,369	-18.8
<b>Premium</b> .....	34,275	33,190	32,136	31,099	32,324	33,499	298,873	264,794	-11.8
Conventional .....	5,359	5,365	5,797	5,721	6,368	6,762	55,277	45,940	-17.2
Reformulated .....	28,916	27,825	26,339	25,378	25,956	26,737	243,596	218,854	-10.5
<b>Total Distillate</b> .....	W	W	W	W	W	W	W	W	W
<b>No. 1 Distillate</b> .....	2,818	W	W	W	W	W	W	W	NA
<b>No. 2 Distillate</b> .....	148,007	161,466	156,953	142,797	151,161	155,212	1,205,565	1,205,537	-0.4
No. 2 Fuel Oil .....	201	W	W	W	W	537	W	W	NA
No. 2 Diesel Fuel .....	NA	NA	NA	NA	NA	NA	NA	NA	NA
Ultra Low Sulfur .....	115,470	122,433	117,685	107,931	111,274	114,799	841,755	915,549	8.3
Low Sulfur .....	W	38,376	38,673	34,297	39,393	W	W	W	NA
High Sulfur .....	W	W	W	W	W	W	W	W	NA
<b>No. 4 Fuel</b> .....	-	-	-	-	-	-	-	-	-
<b>Aviation Gasoline</b> .....	355	419	284	368	517	363	3,241	2,837	-12.8
<b>Kerosene-Type Jet Fuel</b> .....	86,173	82,164	89,307	95,114	90,340	100,835	718,873	706,006	-2.2
<b>Kerosene</b> .....	321	W	W	W	W	W	W	W	NA
<b>Propane</b> .....	32,990	20,025	17,121	17,991	35,735	32,192	223,426	254,451	13.4
<b>Residual Fuel Oil</b> .....	W	W	W	690	W	W	W	W	NA
Sulfur Content <= 1 % .....	W	W	W	W	-	W	W	W	NA
Sulfur Content > 1 % .....	W	W	W	W	W	W	W	W	NA
<b>Indiana</b>									
<b>Motor Gasoline</b> .....	241,633	246,442	256,139	247,573	258,113	251,914	2,010,443	1,971,772	-2.3
<b>Regular</b> .....	207,540	211,303	220,069	212,538	217,895	213,550	1,750,190	1,680,373	-4.4
Conventional .....	175,968	180,991	188,067	181,166	186,062	181,730	1,476,239	1,427,875	-3.7
Reformulated .....	31,572	30,312	32,002	31,372	31,833	31,820	273,951	252,498	-8.2
<b>Midgrade</b> .....	22,523	23,632	24,363	23,674	27,846	24,843	147,378	196,370	32.7
Conventional .....	21,371	22,622	23,274	22,602	26,725	23,752	136,266	187,478	37.0
Reformulated .....	1,152	1,010	1,089	1,072	1,121	1,091	11,112	8,892	-20.3
<b>Premium</b> .....	11,570	11,507	11,707	11,361	12,372	13,521	112,875	95,029	-16.2
Conventional .....	8,864	8,839	8,907	8,642	9,525	10,544	86,987	72,673	-16.8
Reformulated .....	2,706	2,668	2,800	2,719	2,847	2,977	25,888	22,356	-14.0
<b>Total Distillate</b> .....	W	W	W	W	W	W	W	W	W
<b>No. 1 Distillate</b> .....	243	W	W	W	W	W	W	W	NA
<b>No. 2 Distillate</b> .....	156,062	169,998	163,508	155,987	146,656	143,856	1,250,533	1,249,813	-0.5
No. 2 Fuel Oil .....	W	2,793	2,377	W	W	W	8,347	W	NA
No. 2 Diesel Fuel .....	NA	NA	NA	NA	NA	NA	NA	NA	NA
Ultra Low Sulfur .....	110,502	118,440	114,436	110,279	101,961	101,675	802,452	875,298	8.6
Low Sulfur .....	W	48,765	46,695	W	W	W	W	W	NA
High Sulfur .....	-	-	-	-	-	-	W	W	NA
<b>No. 4 Fuel</b> .....	-	-	W	W	W	W	-	W	NA
<b>Aviation Gasoline</b> .....	W	206	171	183	W	332	W	W	NA
<b>Kerosene-Type Jet Fuel</b> .....	19,564	23,617	26,130	18,809	20,417	16,902	178,042	163,036	-8.8
<b>Kerosene</b> .....	635	W	W	W	W	248	W	W	NA
<b>Propane</b> .....	22,048	10,425	9,371	14,279	14,956	14,547	155,140	154,955	-0.5
<b>Residual Fuel Oil</b> .....	501	2,300	2,255	1,679	2,383	2,230	16,552	12,797	-23.0
Sulfur Content <= 1 % .....	W	W	W	W	W	W	W	W	NA
Sulfur Content > 1 % .....	W	W	W	W	W	W	W	W	NA

See footnotes at end of table.

# Prime Supplier Sales Volumes of Petroleum Products by Grade, PAD District, and State

(Thousand Gallons) — Continued

Geographic Area Products	March 2008	April 2008	May 2008	June 2008	July 2008	August 2008	Cumulative Year To Date 2007	Cumulative Year To Date 2008	Adjusted Year To Date % Change <sup>1</sup>
<b>Iowa</b>									
<b>Motor Gasoline</b> .....	102,541	99,223	115,060	106,984	111,175	114,349	898,154	845,989	-6.2
<b>Regular</b> .....	53,682	51,591	64,256	56,261	57,877	60,031	486,752	442,591	-9.4
Conventional .....	53,682	51,591	64,256	56,261	57,877	60,031	486,752	442,591	-9.4
Reformulated .....	-	-	-	-	-	-	-	-	-
<b>Midgrade</b> .....	46,036	44,696	47,516	47,248	49,615	49,959	380,834	377,170	-1.4
Conventional .....	46,036	44,696	47,516	47,248	49,615	49,959	380,834	377,170	-1.4
Reformulated .....	-	-	-	-	-	-	-	-	-
<b>Premium</b> .....	2,823	2,936	3,288	3,475	3,683	4,359	30,568	26,228	-14.5
Conventional .....	2,823	2,936	3,288	3,475	3,683	4,359	30,568	26,228	-14.5
Reformulated .....	-	-	-	-	-	-	-	-	-
<b>Total Distillate</b> .....	W	W	W	W	W	W	W	W	W
<b>No. 1 Distillate</b> .....	W	W	W	W	W	W	W	W	NA
<b>No. 2 Distillate</b> .....	71,943	81,957	90,450	75,799	78,604	78,812	573,441	604,377	5.0
No. 2 Fuel Oil .....	W	W	W	-	-	-	W	W	NA
No. 2 Diesel Fuel .....	NA	NA	NA	NA	NA	NA	NA	NA	NA
Ultra Low Sulfur .....	59,629	66,952	74,180	62,394	63,075	63,439	476,011	495,756	3.7
Low Sulfur .....	W	W	W	13,405	15,529	15,373	W	W	NA
High Sulfur .....	-	-	-	-	-	-	-	-	-
<b>No. 4 Fuel</b> .....	-	-	-	-	-	-	-	-	-
<b>Aviation Gasoline</b> .....	114	187	161	W	302	469	W	W	NA
<b>Kerosene-Type Jet Fuel</b> .....	2,560	2,407	2,480	W	2,804	3,158	22,600	W	NA
<b>Kerosene</b> .....	W	W	W	W	W	W	W	W	NA
<b>Propane</b> .....	28,986	16,198	9,514	10,352	14,166	14,545	173,450	197,131	13.2
<b>Residual Fuel Oil</b> .....	W	W	W	W	W	-	W	W	NA
Sulfur Content <= 1 % .....	W	W	W	W	W	-	W	W	NA
Sulfur Content > 1 % .....	W	-	-	-	-	-	W	W	NA
<b>Kansas</b>									
<b>Motor Gasoline</b> .....	119,652	121,573	124,808	115,578	121,917	120,282	979,297	959,665	-2.4
<b>Regular</b> .....	90,954	93,566	95,935	87,463	93,071	92,129	826,720	737,308	-11.2
Conventional .....	90,954	93,566	95,935	87,463	93,071	92,129	826,720	737,308	-11.2
Reformulated .....	-	-	-	-	-	-	-	-	-
<b>Midgrade</b> .....	23,706	23,157	23,858	23,588	23,913	22,896	104,861	183,134	73.9
Conventional .....	23,706	23,157	23,858	23,588	23,913	22,896	104,861	183,134	73.9
Reformulated .....	-	-	-	-	-	-	-	-	-
<b>Premium</b> .....	4,992	4,850	5,015	4,527	4,933	5,257	47,716	39,223	-18.1
Conventional .....	4,992	4,850	5,015	4,527	4,933	5,257	47,716	39,223	-18.1
Reformulated .....	-	-	-	-	-	-	-	-	-
<b>Total Distillate</b> .....	W	W	W	W	W	W	W	W	W
<b>No. 1 Distillate</b> .....	W	W	222	W	W	W	W	W	NA
<b>No. 2 Distillate</b> .....	70,921	75,778	83,503	81,730	92,900	77,378	577,494	611,118	5.4
No. 2 Fuel Oil .....	-	-	-	-	-	-	W	-	NA
No. 2 Diesel Fuel .....	NA	NA	NA	NA	NA	NA	NA	NA	NA
Ultra Low Sulfur .....	W	67,260	W	73,862	78,281	68,690	537,782	W	NA
Low Sulfur .....	W	8,518	W	7,868	14,619	8,688	W	W	NA
High Sulfur .....	-	-	-	-	-	-	W	-	NA
<b>No. 4 Fuel</b> .....	-	-	-	-	-	-	-	-	-
<b>Aviation Gasoline</b> .....	179	234	278	277	314	281	W	W	NA
<b>Kerosene-Type Jet Fuel</b> .....	4,168	4,006	4,781	4,511	5,177	4,704	38,921	35,855	-8.3
<b>Kerosene</b> .....	W	W	-	W	W	W	W	W	NA
<b>Propane</b> .....	46,190	37,910	37,169	33,226	39,692	29,984	363,785	350,978	-3.9
<b>Residual Fuel Oil</b> .....	W	W	W	W	W	W	W	W	NA
Sulfur Content <= 1 % .....	W	W	W	W	W	-	W	W	NA
Sulfur Content > 1 % .....	W	W	W	W	W	W	W	W	NA

See footnotes at end of table.



# Prime Supplier Sales Volumes of Petroleum Products by Grade, PAD District, and State

(Thousand Gallons) — Continued

Geographic Area Products	March 2008	April 2008	May 2008	June 2008	July 2008	August 2008	Cumulative Year To Date 2007	Cumulative Year To Date 2008	Adjusted Year To Date % Change <sup>1</sup>
<b>Kentucky</b>									
<b>Motor Gasoline</b> .....	171,967	165,821	174,164	163,956	171,925	171,139	1,419,804	1,338,792	-6.1
<b>Regular</b> .....	158,276	152,918	161,903	151,656	158,476	158,018	1,292,840	1,233,973	-4.9
Conventional .....	121,634	117,005	123,164	118,841	122,753	123,739	993,462	949,067	-4.9
Reformulated .....	36,642	35,913	38,739	32,815	35,723	34,279	299,378	284,906	-5.2
<b>Midgrade</b> .....	5,183	4,566	4,325	4,349	4,499	4,013	39,916	37,178	-7.2
Conventional .....	4,159	3,567	3,388	3,418	3,577	3,168	30,638	29,507	-4.1
Reformulated .....	1,024	999	937	931	922	845	9,278	7,671	-17.7
<b>Premium</b> .....	8,508	8,337	7,936	7,951	8,950	9,108	87,048	67,641	-22.6
Conventional .....	5,906	5,776	5,930	5,621	6,456	6,561	63,739	48,028	-25.0
Reformulated .....	2,602	2,561	2,006	2,330	2,494	2,547	23,309	19,613	-16.2
<b>Total Distillate</b> .....	W	W	W	W	W	W	W	W	W
<b>No. 1 Distillate</b> .....	W	W	W	W	W	W	W	W	NA
<b>No. 2 Distillate</b> .....	107,721	103,345	104,545	105,105	104,358	102,207	869,106	831,295	-4.7
No. 2 Fuel Oil .....	W	W	W	W	W	W	9,823	W	NA
No. 2 Diesel Fuel .....	NA	NA	NA	NA	NA	NA	NA	NA	NA
Ultra Low Sulfur .....	67,713	63,242	64,285	64,808	65,247	62,866	466,806	512,728	9.4
Low Sulfur .....	28,550	28,218	25,612	27,926	27,043	27,770	204,445	220,507	7.4
High Sulfur .....	W	W	W	W	W	W	188,032	W	NA
<b>No. 4 Fuel</b> .....	-	-	-	-	-	-	-	-	-
<b>Aviation Gasoline</b> .....	174	244	420	138	255	318	W	1,841	NA
<b>Kerosene-Type Jet Fuel</b> .....	27,925	23,496	18,761	27,060	22,846	23,477	185,366	182,055	-2.2
<b>Kerosene</b> .....	W	W	W	W	W	W	W	W	NA
<b>Propane</b> .....	17,721	8,457	6,800	4,575	10,079	9,479	125,695	108,133	-14.3
<b>Residual Fuel Oil</b> .....	W	-	-	-	-	-	W	W	NA
Sulfur Content <= 1 % .....	-	-	-	-	-	-	-	-	-
Sulfur Content > 1 % .....	W	-	-	-	-	-	W	W	NA
<b>Michigan</b>									
<b>Motor Gasoline</b> .....	369,694	359,959	359,366	349,598	349,772	377,831	2,971,920	2,897,274	-2.9
<b>Regular</b> .....	333,744	321,840	329,900	321,314	316,854	342,051	2,637,922	2,626,009	-0.9
Conventional .....	333,744	321,840	329,900	321,314	316,854	342,051	2,637,922	2,626,009	-0.9
Reformulated .....	-	-	-	-	-	-	-	-	-
<b>Midgrade</b> .....	20,060	22,000	13,409	13,405	15,780	16,388	179,468	136,996	-24.0
Conventional .....	20,060	22,000	13,409	13,405	15,780	16,388	179,468	136,996	-24.0
Reformulated .....	-	-	-	-	-	-	-	-	-
<b>Premium</b> .....	15,890	16,119	16,057	14,879	17,138	19,392	154,530	134,269	-13.5
Conventional .....	15,890	16,119	16,057	14,879	17,138	19,392	154,530	134,269	-13.5
Reformulated .....	-	-	-	-	-	-	-	-	-
<b>Total Distillate</b> .....	W	W	W	W	W	W	W	W	W
<b>No. 1 Distillate</b> .....	W	W	W	W	W	W	W	W	NA
<b>No. 2 Distillate</b> .....	84,809	90,464	98,263	91,540	91,943	90,758	733,436	717,753	-2.5
No. 2 Fuel Oil .....	3,286	W	W	W	W	W	W	W	NA
No. 2 Diesel Fuel .....	NA	NA	NA	NA	NA	NA	NA	NA	NA
Ultra Low Sulfur .....	71,076	75,990	82,583	76,825	77,710	78,368	555,231	603,368	8.2
Low Sulfur .....	W	11,324	12,450	11,637	11,345	9,756	W	W	NA
High Sulfur .....	W	W	W	W	W	W	W	W	NA
<b>No. 4 Fuel</b> .....	-	-	-	-	-	-	-	-	-
<b>Aviation Gasoline</b> .....	189	261	448	351	344	424	2,616	2,315	-11.9
<b>Kerosene-Type Jet Fuel</b> .....	17,027	16,350	14,238	15,504	14,609	14,703	129,382	122,013	-6.1
<b>Kerosene</b> .....	W	W	W	W	W	W	W	W	NA
<b>Propane</b> .....	42,859	25,190	16,927	16,709	15,702	19,135	284,813	247,323	-13.5
<b>Residual Fuel Oil</b> .....	2,740	4,032	4,539	4,527	6,125	3,548	41,613	32,210	-22.9
Sulfur Content <= 1 % .....	W	W	1,007	W	W	594	W	W	NA
Sulfur Content > 1 % .....	W	W	3,532	W	W	2,954	W	W	NA

See footnotes at end of table.

# Prime Supplier Sales Volumes of Petroleum Products by Grade, PAD District, and State

(Thousand Gallons) — Continued

Geographic Area Products	March 2008	April 2008	May 2008	June 2008	July 2008	August 2008	Cumulative Year To Date 2007	Cumulative Year To Date 2008	Adjusted Year To Date % Change <sup>1</sup>
<b>Minnesota</b>									
<b>Motor Gasoline</b> .....	201,933	191,595	212,044	202,154	220,806	219,656	1,705,353	1,644,418	-4.0
<b>Regular</b> .....	171,564	161,940	175,964	166,066	181,213	177,943	1,412,865	1,366,573	-3.7
Conventional .....	171,564	161,940	175,964	166,066	181,213	177,943	1,412,865	1,366,573	-3.7
Reformulated .....	-	-	-	-	-	-	-	-	-
<b>Midgrade</b> .....	21,864	21,523	25,654	26,287	27,866	29,353	206,875	198,485	-4.4
Conventional .....	21,864	21,523	25,654	26,287	27,866	29,353	206,875	198,485	-4.4
Reformulated .....	-	-	-	-	-	-	-	-	-
<b>Premium</b> .....	8,505	8,132	10,426	9,801	11,727	12,360	85,613	79,360	-7.7
Conventional .....	8,505	8,132	10,426	9,801	11,727	12,360	85,613	79,360	-7.7
Reformulated .....	-	-	-	-	-	-	-	-	-
<b>Total Distillate</b> .....	W	W	W	W	W	W	W	W	W
<b>No. 1 Distillate</b> .....	4,070	1,103	W	1,067	1,091	1,095	24,114	W	NA
<b>No. 2 Distillate</b> .....	73,454	74,959	86,603	77,344	78,839	84,298	646,174	619,663	-4.5
No. 2 Fuel Oil .....	W	W	242	111	169	123	W	W	NA
No. 2 Diesel Fuel .....	NA	NA	NA	NA	NA	NA	NA	NA	NA
Ultra Low Sulfur .....	58,273	60,339	72,515	64,674	66,402	70,886	479,430	510,691	6.1
Low Sulfur .....	11,664	10,212	W	W	W	W	W	W	NA
High Sulfur .....	W	W	W	W	W	W	W	W	NA
<b>No. 4 Fuel</b> .....	-	-	-	-	-	-	-	-	-
<b>Aviation Gasoline</b> .....	203	246	356	351	569	486	3,144	2,553	-19.1
<b>Kerosene-Type Jet Fuel</b> .....	32,443	35,354	35,577	33,377	32,621	36,914	277,817	263,775	-5.4
<b>Kerosene</b> .....	61	29	W	18	38	64	1,342	W	NA
<b>Propane</b> .....	29,436	15,412	11,991	11,831	14,580	16,840	190,557	202,407	5.8
<b>Residual Fuel Oil</b> .....	6,411	5,777	6,548	7,442	4,089	4,393	41,309	47,357	14.2
Sulfur Content <= 1 % .....	W	W	W	-	W	-	W	W	NA
Sulfur Content > 1 % .....	W	W	W	7,442	W	4,393	W	W	NA
<b>Missouri</b>									
<b>Motor Gasoline</b> .....	235,588	238,980	249,686	244,633	254,081	249,114	1,974,733	1,915,680	-3.4
<b>Regular</b> .....	201,407	209,731	217,068	213,660	221,707	218,774	1,770,269	1,646,255	-7.4
Conventional .....	134,204	145,710	151,461	149,252	155,447	149,499	1,267,114	1,121,753	-11.8
Reformulated .....	67,203	64,021	65,607	64,408	66,260	69,275	503,155	524,502	3.8
<b>Midgrade</b> .....	23,479	18,626	21,509	20,676	20,370	18,657	94,835	182,083	91.2
Conventional .....	21,156	16,599	19,433	18,642	18,351	16,773	76,108	165,246	116.2
Reformulated .....	2,323	2,027	2,076	2,034	2,019	1,884	18,727	16,837	-10.5
<b>Premium</b> .....	10,702	10,623	11,109	10,297	12,004	11,683	109,629	87,342	-20.7
Conventional .....	6,265	6,417	6,796	6,298	7,618	7,061	71,063	52,424	-26.5
Reformulated .....	4,437	4,206	4,313	3,999	4,386	4,622	38,566	34,918	-9.8
<b>Total Distillate</b> .....	W	W	W	W	W	W	W	W	W
<b>No. 1 Distillate</b> .....	100	W	W	W	W	W	W	W	NA
<b>No. 2 Distillate</b> .....	106,135	106,996	107,849	106,375	105,668	103,726	811,868	834,338	2.3
No. 2 Fuel Oil .....	W	W	W	W	W	W	W	W	NA
No. 2 Diesel Fuel .....	NA	NA	NA	NA	NA	NA	NA	NA	NA
Ultra Low Sulfur .....	85,566	88,669	88,236	86,855	87,409	86,687	601,397	681,475	12.9
Low Sulfur .....	20,431	18,247	19,594	19,386	18,245	16,827	W	151,693	NA
High Sulfur .....	W	W	W	W	W	W	W	W	NA
<b>No. 4 Fuel</b> .....	-	-	-	-	-	-	-	-	-
<b>Aviation Gasoline</b> .....	149	W	W	W	246	W	W	W	NA
<b>Kerosene-Type Jet Fuel</b> .....	19,000	16,919	17,989	19,876	17,515	19,268	W	145,967	NA
<b>Kerosene</b> .....	32	W	W	W	W	W	W	W	NA
<b>Propane</b> .....	27,357	14,137	9,360	8,000	10,234	12,574	173,763	174,833	0.2
<b>Residual Fuel Oil</b> .....	W	W	-	W	W	W	W	W	NA
Sulfur Content <= 1 % .....	W	W	-	W	W	-	W	W	NA
Sulfur Content > 1 % .....	-	-	-	-	-	W	W	W	NA

See footnotes at end of table.

# Prime Supplier Sales Volumes of Petroleum Products by Grade, PAD District, and State

(Thousand Gallons) — Continued

Geographic Area Products	March 2008	April 2008	May 2008	June 2008	July 2008	August 2008	Cumulative Year To Date 2007	Cumulative Year To Date 2008	Adjusted Year To Date % Change <sup>1</sup>
<b>Nebraska</b>									
<b>Motor Gasoline</b> .....	59,091	60,486	63,701	63,933	67,675	67,133	532,493	500,096	-6.5
<b>Regular</b> .....	32,009	32,532	35,148	35,708	39,555	38,334	324,591	277,966	-14.7
Conventional .....	32,009	32,532	35,148	35,708	39,555	38,334	324,591	277,966	-14.7
Reformulated .....	-	-	-	-	-	-	-	-	-
<b>Midgrade</b> .....	24,968	25,946	26,483	26,211	25,763	26,186	188,271	205,096	8.5
Conventional .....	24,968	25,946	26,483	26,211	25,763	26,186	188,271	205,096	8.5
Reformulated .....	-	-	-	-	-	-	-	-	-
<b>Premium</b> .....	2,114	2,008	2,070	2,014	2,357	2,613	19,631	17,034	-13.6
Conventional .....	2,114	2,008	2,070	2,014	2,357	2,613	19,631	17,034	-13.6
Reformulated .....	-	-	-	-	-	-	-	-	-
<b>Total Distillate</b> .....	W	W	W	W	W	W	W	W	W
<b>No. 1 Distillate</b> .....	W	W	W	27	W	W	W	W	NA
<b>No. 2 Distillate</b> .....	46,712	50,146	W	54,125	W	62,022	W	W	NA
No. 2 Fuel Oil .....	-	-	-	-	-	-	W	-	NA
No. 2 Diesel Fuel .....	NA	NA	NA	NA	NA	NA	NA	NA	NA
Ultra Low Sulfur .....	36,669	42,889	43,810	42,263	49,543	49,168	W	W	NA
Low Sulfur .....	10,043	7,257	W	11,862	W	12,854	W	W	NA
High Sulfur .....	-	-	-	-	-	-	W	-	NA
<b>No. 4 Fuel</b> .....	-	-	-	-	-	-	-	-	-
<b>Aviation Gasoline</b> .....	81	W	139	159	308	284	W	W	NA
<b>Kerosene-Type Jet Fuel</b> .....	W	2,610	2,854	W	2,967	3,251	24,648	W	NA
<b>Kerosene</b> .....	W	W	-	-	-	W	W	W	NA
<b>Propane</b> .....	8,493	4,654	5,274	2,697	5,629	8,015	66,220	70,224	5.6
<b>Residual Fuel Oil</b> .....	-	-	-	-	-	-	W	-	NA
Sulfur Content <= 1 % .....	-	-	-	-	-	-	W	-	NA
Sulfur Content > 1 % .....	-	-	-	-	-	-	W	-	NA
<b>North Dakota</b>									
<b>Motor Gasoline</b> .....	25,021	27,523	28,830	26,704	29,292	28,556	219,486	216,005	-2.0
<b>Regular</b> .....	17,758	19,925	21,242	19,140	20,448	20,742	172,299	154,903	-10.5
Conventional .....	17,758	19,925	21,242	19,140	20,448	20,742	172,299	154,903	-10.5
Reformulated .....	-	-	-	-	-	-	-	-	-
<b>Midgrade</b> .....	6,655	6,935	6,775	6,794	7,951	6,825	39,389	55,029	39.1
Conventional .....	6,655	6,935	6,775	6,794	7,951	6,825	39,389	55,029	39.1
Reformulated .....	-	-	-	-	-	-	-	-	-
<b>Premium</b> .....	608	663	813	770	893	989	7,798	6,073	-22.4
Conventional .....	608	663	813	770	893	989	7,798	6,073	-22.4
Reformulated .....	-	-	-	-	-	-	-	-	-
<b>Total Distillate</b> .....	W	W	W	W	W	W	W	W	W
<b>No. 1 Distillate</b> .....	W	W	W	W	24	W	W	W	NA
<b>No. 2 Distillate</b> .....	37,329	38,463	38,993	32,488	36,839	45,384	W	292,146	NA
No. 2 Fuel Oil .....	W	W	W	W	W	W	W	W	NA
No. 2 Diesel Fuel .....	NA	NA	NA	NA	NA	NA	NA	NA	NA
Ultra Low Sulfur .....	W	31,431	32,527	26,238	30,497	38,180	218,910	W	NA
Low Sulfur .....	W	W	W	W	W	W	W	W	NA
High Sulfur .....	-	-	-	-	-	-	W	W	NA
<b>No. 4 Fuel</b> .....	-	-	-	-	-	-	-	-	-
<b>Aviation Gasoline</b> .....	171	198	142	255	278	343	1,451	1,568	7.6
<b>Kerosene-Type Jet Fuel</b> .....	1,957	2,638	2,174	2,372	2,475	1,962	W	17,256	NA
<b>Kerosene</b> .....	W	W	W	W	-	W	W	W	NA
<b>Propane</b> .....	5,815	3,737	4,331	4,211	4,959	4,498	50,272	50,752	0.5
<b>Residual Fuel Oil</b> .....	-	-	W	W	W	W	W	W	NA
Sulfur Content <= 1 % .....	-	-	-	-	-	-	-	-	-
Sulfur Content > 1 % .....	-	-	W	W	W	W	W	W	NA

See footnotes at end of table.

# Prime Supplier Sales Volumes of Petroleum Products by Grade, PAD District, and State

(Thousand Gallons) — Continued

Geographic Area Products	March 2008	April 2008	May 2008	June 2008	July 2008	August 2008	Cumulative Year To Date 2007	Cumulative Year To Date 2008	Adjusted Year To Date % Change <sup>1</sup>
<b>Ohio</b>									
<b>Motor Gasoline</b> .....	401,208	412,679	428,171	411,240	439,657	421,025	3,375,176	3,298,533	-2.7
<b>Regular</b> .....	369,517	382,130	395,977	380,883	402,266	383,768	3,091,736	3,036,662	-2.2
Conventional .....	369,517	382,130	395,977	380,883	402,266	383,768	3,091,736	3,036,662	-2.2
Reformulated .....	-	-	-	-	-	-	-	-	-
<b>Midgrade</b> .....	13,505	10,606	12,149	11,256	16,267	14,405	101,145	103,114	1.5
Conventional .....	13,505	10,606	12,149	11,256	16,267	14,405	101,145	103,114	1.5
Reformulated .....	-	-	-	-	-	-	-	-	-
<b>Premium</b> .....	18,186	19,943	20,045	19,101	21,124	22,852	182,295	158,757	-13.3
Conventional .....	18,186	19,943	20,045	19,101	21,124	22,852	182,295	158,757	-13.3
Reformulated .....	-	-	-	-	-	-	-	-	-
<b>Total Distillate</b> .....	W	W	W	W	W	W	W	W	W
<b>No. 1 Distillate</b> .....	556	113	W	W	W	W	W	W	NA
<b>No. 2 Distillate</b> .....	170,994	172,886	173,112	168,247	180,347	168,493	1,241,475	1,382,690	10.9
No. 2 Fuel Oil .....	W	W	W	W	W	W	18,081	W	NA
No. 2 Diesel Fuel .....	NA	NA	NA	NA	NA	NA	NA	NA	NA
Ultra Low Sulfur .....	118,645	119,703	122,309	116,248	127,109	118,776	732,174	962,676	30.9
Low Sulfur .....	W	W	W	W	40,252	W	W	W	NA
High Sulfur .....	-	-	-	-	W	-	W	W	NA
<b>No. 4 Fuel</b> .....	-	-	-	-	-	-	-	-	-
<b>Aviation Gasoline</b> .....	W	NA	W	W	W	757	W	W	NA
<b>Kerosene-Type Jet Fuel</b> .....	52,370	67,020	58,130	58,490	63,706	58,980	439,744	462,195	4.7
<b>Kerosene</b> .....	1,213	283	W	W	W	W	W	W	NA
<b>Propane</b> .....	33,005	14,863	9,867	9,829	26,025	20,483	193,033	202,493	4.5
<b>Residual Fuel Oil</b> .....	5,000	6,608	6,466	5,597	6,938	6,449	29,898	44,338	47.7
Sulfur Content <= 1 % .....	W	W	W	W	W	W	W	W	NA
Sulfur Content > 1 % .....	W	W	W	W	W	W	W	W	NA
<b>Oklahoma</b>									
<b>Motor Gasoline</b> .....	207,464	202,958	155,516	160,458	161,496	161,445	1,302,144	1,388,297	6.2
<b>Regular</b> .....	197,528	193,789	146,575	151,800	150,947	150,980	1,212,352	1,310,784	7.7
Conventional .....	197,528	193,789	146,575	151,800	150,947	150,980	1,212,352	1,310,784	7.7
Reformulated .....	-	-	-	-	-	-	-	-	-
<b>Midgrade</b> .....	2,574	2,540	2,334	2,114	2,158	2,351	16,473	18,375	11.1
Conventional .....	2,574	2,540	2,334	2,114	2,158	2,351	16,473	18,375	11.1
Reformulated .....	-	-	-	-	-	-	-	-	-
<b>Premium</b> .....	7,362	6,629	6,607	6,544	8,391	8,114	73,319	59,138	-19.7
Conventional .....	7,362	6,629	6,607	6,544	8,391	8,114	73,319	59,138	-19.7
Reformulated .....	-	-	-	-	-	-	-	-	-
<b>Total Distillate</b> .....	W	W	W	W	W	W	W	W	W
<b>No. 1 Distillate</b> .....	-	W	-	W	W	W	-	W	NA
<b>No. 2 Distillate</b> .....	W	166,457	W	155,490	W	135,998	W	W	NA
No. 2 Fuel Oil .....	-	-	-	-	-	-	W	-	NA
No. 2 Diesel Fuel .....	NA	NA	NA	NA	NA	NA	NA	NA	NA
Ultra Low Sulfur .....	128,916	139,535	134,785	124,187	117,020	110,990	844,602	W	NA
Low Sulfur .....	W	26,922	W	31,303	W	25,008	W	W	NA
High Sulfur .....	-	-	-	-	-	-	W	-	NA
<b>No. 4 Fuel</b> .....	-	-	-	-	-	-	W	-	NA
<b>Aviation Gasoline</b> .....	211	176	245	233	248	W	1,719	W	NA
<b>Kerosene-Type Jet Fuel</b> .....	18,129	17,730	14,954	18,316	18,784	17,473	129,337	137,294	5.7
<b>Kerosene</b> .....	W	W	W	W	-	W	W	W	NA
<b>Propane</b> .....	12,685	7,454	6,000	5,584	6,186	6,930	92,481	83,407	-10.2
<b>Residual Fuel Oil</b> .....	W	-	W	W	-	W	W	W	NA
Sulfur Content <= 1 % .....	-	-	W	-	-	-	W	W	NA
Sulfur Content > 1 % .....	W	-	W	W	-	W	W	W	NA

See footnotes at end of table.

# Prime Supplier Sales Volumes of Petroleum Products by Grade, PAD District, and State

(Thousand Gallons) — Continued

Geographic Area Products	March 2008	April 2008	May 2008	June 2008	July 2008	August 2008	Cumulative Year To Date 2007	Cumulative Year To Date 2008	Adjusted Year To Date % Change <sup>1</sup>
<b>South Dakota</b>									
<b>Motor Gasoline</b> .....	31,354	32,846	35,134	36,556	37,908	39,291	291,520	274,228	-6.3
<b>Regular</b> .....	22,947	24,478	26,030	27,837	28,405	29,305	219,890	202,519	-8.3
Conventional .....	22,947	24,478	26,030	27,837	28,405	29,305	219,890	202,519	-8.3
Reformulated .....	-	-	-	-	-	-	-	-	-
<b>Midgrade</b> .....	7,513	7,473	8,049	7,494	7,677	7,699	58,204	61,617	5.4
Conventional .....	7,513	7,473	8,049	7,494	7,677	7,699	58,204	61,617	5.4
Reformulated .....	-	-	-	-	-	-	-	-	-
<b>Premium</b> .....	894	895	1,055	1,225	1,826	2,287	13,426	10,092	-25.1
Conventional .....	894	895	1,055	1,225	1,826	2,287	13,426	10,092	-25.1
Reformulated .....	-	-	-	-	-	-	-	-	-
<b>Total Distillate</b> .....	W	W	W	W	W	W	W	W	W
<b>No. 1 Distillate</b> .....	W	22	W	40	W	71	W	W	NA
<b>No. 2 Distillate</b> .....	W	26,218	28,417	26,174	26,127	29,321	W	W	NA
No. 2 Fuel Oil .....	-	W	W	W	W	W	W	W	NA
No. 2 Diesel Fuel .....	NA	NA	NA	NA	NA	NA	NA	NA	NA
Ultra Low Sulfur .....	21,074	24,997	W	24,017	23,320	25,803	194,619	W	NA
Low Sulfur .....	W	W	W	W	W	W	W	W	NA
High Sulfur .....	-	-	-	-	-	-	W	-	NA
<b>No. 4 Fuel</b> .....	-	-	-	-	-	-	-	-	-
<b>Aviation Gasoline</b> .....	78	113	169	140	170	247	1,366	1,047	-23.7
<b>Kerosene-Type Jet Fuel</b> .....	W	2,659	1,795	2,452	1,827	2,042	W	W	NA
<b>Kerosene</b> .....	W	-	W	-	W	-	W	W	NA
<b>Propane</b> .....	5,990	3,622	2,637	2,213	3,423	3,991	50,754	49,727	-2.4
<b>Residual Fuel Oil</b> .....	-	W	W	W	148	W	W	W	NA
Sulfur Content <= 1 % .....	-	-	-	-	W	-	-	W	NA
Sulfur Content > 1 % .....	-	W	W	W	W	W	W	W	NA
<b>Tennessee</b>									
<b>Motor Gasoline</b> .....	246,952	253,967	256,385	258,907	262,611	260,362	2,123,400	2,019,647	-5.3
<b>Regular</b> .....	220,967	228,038	224,423	226,318	229,084	226,580	1,796,575	1,778,654	-1.4
Conventional .....	220,967	228,038	224,423	226,318	229,084	226,580	1,796,575	1,778,654	-1.4
Reformulated .....	-	-	-	-	-	-	-	-	-
<b>Midgrade</b> .....	8,234	7,702	7,185	7,339	7,427	7,049	92,796	63,342	-32.0
Conventional .....	8,234	7,702	7,185	7,339	7,427	7,049	92,796	63,342	-32.0
Reformulated .....	-	-	-	-	-	-	-	-	-
<b>Premium</b> .....	17,751	18,227	24,777	25,250	26,100	26,733	234,029	177,651	-24.4
Conventional .....	17,751	18,227	24,777	25,250	26,100	26,733	234,029	177,651	-24.4
Reformulated .....	-	-	-	-	-	-	-	-	-
<b>Total Distillate</b> .....	W	W	W	W	W	W	W	W	W
<b>No. 1 Distillate</b> .....	-	-	-	-	-	-	W	-	NA
<b>No. 2 Distillate</b> .....	121,602	120,922	124,902	126,593	121,996	121,417	W	965,759	NA
No. 2 Fuel Oil .....	W	W	W	W	W	W	W	W	NA
No. 2 Diesel Fuel .....	NA	NA	NA	NA	NA	NA	NA	NA	NA
Ultra Low Sulfur .....	77,201	78,992	81,214	85,311	83,030	83,176	520,198	633,677	21.3
Low Sulfur .....	35,073	35,372	35,025	32,660	31,429	31,170	245,816	270,786	9.7
High Sulfur .....	W	W	W	W	W	W	W	W	NA
<b>No. 4 Fuel</b> .....	-	-	-	-	-	W	-	W	NA
<b>Aviation Gasoline</b> .....	380	371	366	472	356	276	2,891	2,674	-7.9
<b>Kerosene-Type Jet Fuel</b> .....	40,890	38,425	40,792	40,152	39,728	39,477	336,476	317,941	-5.9
<b>Kerosene</b> .....	321	24	39	28	5	W	W	W	NA
<b>Propane</b> .....	15,764	11,742	11,322	10,918	12,227	13,196	122,316	117,292	-4.5
<b>Residual Fuel Oil</b> .....	W	485	W	W	W	W	W	W	NA
Sulfur Content <= 1 % .....	-	W	-	-	-	-	W	W	NA
Sulfur Content > 1 % .....	W	W	W	W	W	W	W	W	NA

See footnotes at end of table.

# Prime Supplier Sales Volumes of Petroleum Products by Grade, PAD District, and State

(Thousand Gallons) — Continued

Geographic Area Products	March 2008	April 2008	May 2008	June 2008	July 2008	August 2008	Cumulative Year To Date 2007	Cumulative Year To Date 2008	Adjusted Year To Date % Change <sup>1</sup>
<b>Wisconsin</b>									
<b>Motor Gasoline</b> .....	185,394	191,894	210,171	202,566	218,480	218,611	1,622,060	1,598,034	-1.9
<b>Regular</b> .....	143,480	146,466	164,394	155,212	172,732	178,148	1,418,223	1,247,643	-12.4
Conventional .....	96,525	95,501	112,936	104,495	120,465	125,812	1,030,277	843,497	-18.5
Reformulated .....	46,955	50,965	51,458	50,717	52,267	52,336	387,946	404,146	3.7
<b>Midgrade</b> .....	33,538	36,652	35,737	37,491	33,881	27,706	119,229	270,508	126.0
Conventional .....	32,402	35,433	34,629	36,445	32,783	26,643	109,204	261,513	138.5
Reformulated .....	1,136	1,219	1,108	1,046	1,098	1,063	10,025	8,995	-10.6
<b>Premium</b> .....	8,376	8,776	10,040	9,863	11,867	12,757	84,608	79,883	-6.0
Conventional .....	4,995	4,829	6,242	6,128	7,808	8,197	56,046	49,401	-12.2
Reformulated .....	3,381	3,947	3,798	3,735	4,059	4,560	28,562	30,482	6.3
<b>Total Distillate</b> .....	W	W	W	W	W	W	W	W	W
<b>No. 1 Distillate</b> .....	1,163	180	110	W	W	130	W	W	NA
<b>No. 2 Distillate</b> .....	78,236	84,775	97,823	89,234	92,558	90,574	678,393	697,523	2.4
No. 2 Fuel Oil .....	424	229	478	326	254	460	6,632	W	NA
No. 2 Diesel Fuel .....	NA	NA	NA	NA	NA	NA	NA	NA	NA
Ultra Low Sulfur .....	67,668	71,295	81,492	74,421	76,629	76,892	W	589,389	NA
Low Sulfur .....	W	W	W	W	W	W	W	W	NA
High Sulfur .....	W	W	W	W	W	W	W	W	NA
<b>No. 4 Fuel</b> .....	-	-	-	-	-	-	-	-	-
<b>Aviation Gasoline</b> .....	205	191	316	270	576	416	2,421	2,233	-8.1
<b>Kerosene-Type Jet Fuel</b> .....	6,517	6,742	7,291	9,316	12,132	11,826	54,214	65,847	21.0
<b>Kerosene</b> .....	100	61	35	W	W	64	W	W	NA
<b>Propane</b> .....	27,853	16,793	11,390	9,823	10,847	11,998	186,847	172,764	-7.9
<b>Residual Fuel Oil</b> .....	W	W	W	W	W	W	W	W	NA
Sulfur Content <= 1 % .....	W	W	-	W	-	-	W	W	NA
Sulfur Content > 1 % .....	W	W	W	W	W	W	W	W	NA
<b>PAD District III</b>									
<b>Motor Gasoline</b> .....	1,861,426	1,836,087	1,863,500	1,793,599	1,796,763	1,846,995	14,483,937	14,446,216	-0.7
<b>Regular</b> .....	1,681,194	1,663,447	1,699,053	1,641,590	1,644,267	1,684,056	12,897,127	13,111,240	1.2
Conventional .....	1,307,165	1,284,264	1,301,978	1,252,784	1,261,822	1,283,201	10,153,927	10,082,935	-1.1
Reformulated .....	374,029	379,183	397,075	388,806	382,445	400,855	2,743,200	3,028,305	9.9
<b>Midgrade</b> .....	52,577	48,104	48,641	45,510	45,387	46,632	469,994	392,008	-16.9
Conventional .....	37,211	33,937	34,301	32,460	32,707	33,656	332,985	277,717	-16.9
Reformulated .....	15,366	14,167	14,340	13,050	12,680	12,976	137,009	114,291	-16.9
<b>Premium</b> .....	127,655	124,536	115,806	106,499	107,109	116,307	1,116,816	942,968	-15.9
Conventional .....	91,235	88,973	79,951	74,906	75,558	80,559	807,747	662,911	-18.3
Reformulated .....	36,420	35,563	35,855	31,593	31,551	35,748	309,069	280,057	-9.8
<b>Total Distillate</b> .....	W	W	W	W	W	W	W	W	W
<b>No. 1 Distillate</b> .....	W	W	-	W	W	W	W	W	NA
<b>No. 2 Distillate</b> .....	1,027,156	1,153,946	1,086,873	995,440	1,013,098	993,247	8,344,303	8,287,989	-1.1
No. 2 Fuel Oil .....	14,233	9,219	10,467	11,316	12,587	12,792	187,630	118,018	-37.4
No. 2 Diesel Fuel .....	NA	NA	NA	NA	NA	NA	NA	NA	NA
Ultra Low Sulfur .....	762,108	863,645	815,476	734,334	740,482	753,201	5,305,505	6,143,378	15.3
Low Sulfur .....	192,418	205,503	220,416	210,354	222,557	190,055	1,620,944	1,614,532	-0.8
High Sulfur .....	58,397	75,579	40,514	39,436	37,472	37,199	1,230,224	412,061	-66.6
<b>No. 4 Fuel</b> .....	W	W	W	W	W	W	W	W	NA
<b>Aviation Gasoline</b> .....	2,681	2,599	2,834	2,986	2,726	2,597	22,020	21,256	-3.9
<b>Kerosene-Type Jet Fuel</b> .....	308,198	292,309	299,415	343,324	338,967	338,623	2,617,055	2,529,832	-3.7
<b>Kerosene</b> .....	585	431	W	460	421	302	9,559	W	NA
<b>Propane</b> .....	490,273	417,998	440,832	426,142	457,100	399,714	4,019,688	3,719,463	-7.8
<b>Residual Fuel Oil</b> .....	111,066	102,468	81,606	100,258	99,522	87,710	770,761	785,360	1.5
Sulfur Content <= 1 % .....	19,190	17,948	18,332	18,206	17,337	W	W	W	NA
Sulfur Content > 1 % .....	91,876	84,520	63,274	82,052	82,185	W	W	W	NA

See footnotes at end of table.

# Prime Supplier Sales Volumes of Petroleum Products by Grade, PAD District, and State

(Thousand Gallons) — Continued

Geographic Area Products	March 2008	April 2008	May 2008	June 2008	July 2008	August 2008	Cumulative Year To Date 2007	Cumulative Year To Date 2008	Adjusted Year To Date % Change <sup>1</sup>
<b>Alabama</b>									
<b>Motor Gasoline</b> .....	194,931	193,653	192,950	187,710	191,279	191,345	1,592,505	1,520,583	-4.9
<b>Regular</b> .....	175,865	175,112	175,626	171,681	174,328	174,461	1,397,155	1,377,305	-1.8
Conventional .....	175,865	175,112	175,626	171,681	174,328	174,461	1,397,155	1,377,305	-1.8
Reformulated .....	-	-	-	-	-	-	-	-	-
<b>Midgrade</b> .....	5,458	5,361	5,134	4,853	5,107	4,786	59,826	41,652	-30.7
Conventional .....	5,458	5,361	5,134	4,853	5,107	4,786	59,826	41,652	-30.7
Reformulated .....	-	-	-	-	-	-	-	-	-
<b>Premium</b> .....	13,608	13,180	12,190	11,176	11,844	12,098	135,524	101,626	-25.3
Conventional .....	13,608	13,180	12,190	11,176	11,844	12,098	135,524	101,626	-25.3
Reformulated .....	-	-	-	-	-	-	-	-	-
<b>Total Distillate</b> .....	W	W	W	W	W	W	W	W	W
<b>No. 1 Distillate</b> .....	-	-	-	-	-	-	W	-	NA
<b>No. 2 Distillate</b> .....	W	W	W	W	W	W	655,347	W	NA
No. 2 Fuel Oil .....	W	W	W	W	W	W	W	W	NA
No. 2 Diesel Fuel .....	NA	NA	NA	NA	NA	NA	NA	NA	NA
Ultra Low Sulfur .....	57,181	58,867	60,325	58,670	58,150	57,963	427,151	460,052	7.3
Low Sulfur .....	W	22,040	20,471	16,678	17,081	W	109,035	W	NA
High Sulfur .....	W	W	W	W	W	W	W	W	NA
<b>No. 4 Fuel</b> .....	-	-	-	-	-	-	-	-	-
<b>Aviation Gasoline</b> .....	254	259	176	168	144	169	1,601	1,540	-4.2
<b>Kerosene-Type Jet Fuel</b> .....	7,112	7,152	7,045	7,244	6,511	6,545	55,571	55,585	-0.4
<b>Kerosene</b> .....	W	W	W	W	W	W	W	W	NA
<b>Propane</b> .....	9,291	5,475	4,603	3,418	3,350	5,556	68,644	64,672	-6.2
<b>Residual Fuel Oil</b> .....	W	W	W	W	W	3,012	W	W	NA
Sulfur Content <= 1 % .....	W	W	W	W	W	W	W	W	NA
Sulfur Content > 1 % .....	W	W	W	W	W	W	W	W	NA
<b>Arkansas</b>									
<b>Motor Gasoline</b> .....	114,376	111,535	120,108	115,221	117,034	116,330	949,441	920,177	-3.5
<b>Regular</b> .....	104,609	102,976	110,804	105,681	107,618	106,176	867,932	843,807	-3.2
Conventional .....	104,609	102,976	110,804	105,681	107,618	106,176	867,932	843,807	-3.2
Reformulated .....	-	-	-	-	-	-	-	-	-
<b>Midgrade</b> .....	4,236	3,232	3,945	4,622	4,311	4,916	19,990	33,400	66.4
Conventional .....	4,236	3,232	3,945	4,622	4,311	4,916	19,990	33,400	66.4
Reformulated .....	-	-	-	-	-	-	-	-	-
<b>Premium</b> .....	5,531	5,327	5,359	4,918	5,105	5,238	61,519	42,970	-30.4
Conventional .....	5,531	5,327	5,359	4,918	5,105	5,238	61,519	42,970	-30.4
Reformulated .....	-	-	-	-	-	-	-	-	-
<b>Total Distillate</b> .....	W	W	W	W	W	W	W	W	W
<b>No. 1 Distillate</b> .....	-	-	-	-	-	-	W	W	NA
<b>No. 2 Distillate</b> .....	75,973	W	W	91,395	91,884	81,824	W	W	NA
No. 2 Fuel Oil .....	W	W	-	W	-	-	W	W	NA
No. 2 Diesel Fuel .....	NA	NA	NA	NA	NA	NA	NA	NA	NA
Ultra Low Sulfur .....	53,503	57,530	58,044	63,986	63,756	59,642	383,747	461,879	19.9
Low Sulfur .....	22,411	W	24,296	27,382	W	W	W	W	NA
High Sulfur .....	W	W	W	W	W	W	W	W	NA
<b>No. 4 Fuel</b> .....	-	-	-	-	-	-	-	-	-
<b>Aviation Gasoline</b> .....	113	200	101	W	121	W	W	W	NA
<b>Kerosene-Type Jet Fuel</b> .....	3,782	3,754	3,794	4,825	4,333	3,719	30,544	31,012	1.1
<b>Kerosene</b> .....	-	W	W	-	-	-	W	W	NA
<b>Propane</b> .....	9,016	5,284	4,389	3,295	3,871	4,804	66,950	61,345	-8.7
<b>Residual Fuel Oil</b> .....	W	-	-	-	-	-	W	W	NA
Sulfur Content <= 1 % .....	W	-	-	-	-	-	W	W	NA
Sulfur Content > 1 % .....	-	-	-	-	-	-	-	-	-

See footnotes at end of table.

# Prime Supplier Sales Volumes of Petroleum Products by Grade, PAD District, and State

(Thousand Gallons) — Continued

Geographic Area Products	March 2008	April 2008	May 2008	June 2008	July 2008	August 2008	Cumulative Year To Date 2007	Cumulative Year To Date 2008	Adjusted Year To Date % Change <sup>1</sup>
<b>Louisiana</b>									
<b>Motor Gasoline</b> .....	218,041	213,574	197,438	193,557	207,752	195,695	1,603,183	1,624,192	0.9
<b>Regular</b> .....	198,068	194,096	178,167	176,390	192,807	179,698	1,425,849	1,479,295	3.3
Conventional .....	198,068	194,096	178,167	176,390	192,807	179,698	1,425,849	1,479,295	3.3
Reformulated .....	-	-	-	-	-	-	-	-	-
<b>Midgrade</b> .....	5,447	4,949	4,868	4,363	4,330	4,496	53,307	39,572	-26.1
Conventional .....	5,447	4,949	4,868	4,363	4,330	4,496	53,307	39,572	-26.1
Reformulated .....	-	-	-	-	-	-	-	-	-
<b>Premium</b> .....	14,526	14,529	14,403	12,804	10,615	11,501	124,027	105,325	-15.4
Conventional .....	14,526	14,529	14,403	12,804	10,615	11,501	124,027	105,325	-15.4
Reformulated .....	-	-	-	-	-	-	-	-	-
<b>Total Distillate</b> .....	W	W	W	W	W	W	W	W	W
<b>No. 1 Distillate</b> .....	-	-	-	-	-	-	-	-	-
<b>No. 2 Distillate</b> .....	169,397	185,380	156,935	150,427	W	W	W	W	NA
No. 2 Fuel Oil .....	W	W	W	W	W	W	W	W	NA
No. 2 Diesel Fuel .....	NA	NA	NA	NA	NA	NA	NA	NA	NA
Ultra Low Sulfur .....	68,233	68,381	73,301	73,805	76,079	70,766	454,390	571,066	25.2
Low Sulfur .....	W	63,747	65,634	W	59,132	W	W	W	NA
High Sulfur .....	33,943	W	W	14,475	W	12,448	W	W	NA
<b>No. 4 Fuel</b> .....	-	-	-	-	-	-	W	-	NA
<b>Aviation Gasoline</b> .....	292	350	503	813	236	456	2,192	3,207	45.7
<b>Kerosene-Type Jet Fuel</b> .....	54,635	61,762	67,272	62,690	61,702	56,359	534,790	495,004	-7.8
<b>Kerosene</b> .....	71	108	57	112	W	W	W	W	NA
<b>Propane</b> .....	48,614	65,554	44,886	42,440	60,891	26,567	396,294	386,338	-2.9
<b>Residual Fuel Oil</b> .....	24,112	13,645	7,753	30,179	17,064	17,391	127,845	146,260	13.9
Sulfur Content <= 1 % .....	W	W	W	W	W	W	W	W	NA
Sulfur Content > 1 % .....	W	W	W	W	W	W	W	W	NA
<b>Mississippi</b>									
<b>Motor Gasoline</b> .....	137,251	134,723	140,822	142,280	150,804	147,524	1,156,212	1,114,420	-4.0
<b>Regular</b> .....	124,233	120,680	129,207	129,357	138,538	133,738	1,022,957	1,011,069	-1.6
Conventional .....	124,233	120,680	129,207	129,357	138,538	133,738	1,022,957	1,011,069	-1.6
Reformulated .....	-	-	-	-	-	-	-	-	-
<b>Midgrade</b> .....	4,095	3,707	3,655	3,461	3,519	3,433	40,933	30,063	-26.9
Conventional .....	4,095	3,707	3,655	3,461	3,519	3,433	40,933	30,063	-26.9
Reformulated .....	-	-	-	-	-	-	-	-	-
<b>Premium</b> .....	8,923	10,336	7,960	9,462	8,747	10,353	92,322	73,288	-20.9
Conventional .....	8,923	10,336	7,960	9,462	8,747	10,353	92,322	73,288	-20.9
Reformulated .....	-	-	-	-	-	-	-	-	-
<b>Total Distillate</b> .....	W	W	W	W	W	W	W	W	W
<b>No. 1 Distillate</b> .....	-	-	-	-	-	-	W	-	NA
<b>No. 2 Distillate</b> .....	W	W	W	W	W	W	W	W	NA
No. 2 Fuel Oil .....	W	85	121	W	-	W	W	W	NA
No. 2 Diesel Fuel .....	NA	NA	NA	NA	NA	NA	NA	NA	NA
Ultra Low Sulfur .....	52,796	54,561	51,332	49,482	49,625	51,828	372,351	408,393	9.2
Low Sulfur .....	28,288	28,850	W	W	27,271	W	165,896	W	NA
High Sulfur .....	W	W	W	W	W	W	W	W	NA
<b>No. 4 Fuel</b> .....	-	-	-	-	-	-	-	-	-
<b>Aviation Gasoline</b> .....	126	129	144	W	151	155	W	W	NA
<b>Kerosene-Type Jet Fuel</b> .....	22,665	8,988	11,712	7,373	13,545	13,092	114,813	94,496	-18.0
<b>Kerosene</b> .....	W	W	W	W	W	W	W	W	NA
<b>Propane</b> .....	13,716	8,365	9,359	7,316	6,317	7,664	137,404	100,783	-27.0
<b>Residual Fuel Oil</b> .....	-	W	-	-	-	W	W	W	NA
Sulfur Content <= 1 % .....	-	-	-	-	-	-	-	-	-
Sulfur Content > 1 % .....	-	W	-	-	-	W	W	W	NA

See footnotes at end of table.



# Prime Supplier Sales Volumes of Petroleum Products by Grade, PAD District, and State

(Thousand Gallons) — Continued

Geographic Area Products	March 2008	April 2008	May 2008	June 2008	July 2008	August 2008	Cumulative Year To Date 2007	Cumulative Year To Date 2008	Adjusted Year To Date % Change <sup>1</sup>
<b>New Mexico</b>									
<b>Motor Gasoline</b> .....	86,768	79,294	80,176	77,208	79,713	79,670	655,406	633,466	-3.7
<b>Regular</b> .....	77,204	70,914	72,143	69,662	71,753	71,437	579,318	566,169	-2.7
Conventional .....	77,204	70,914	72,143	69,662	71,753	71,437	579,318	566,169	-2.7
Reformulated .....	-	-	-	-	-	-	-	-	-
<b>Midgrade</b> .....	2,167	1,919	1,815	1,681	1,808	1,873	19,871	15,330	-23.2
Conventional .....	2,167	1,919	1,815	1,681	1,808	1,873	19,871	15,330	-23.2
Reformulated .....	-	-	-	-	-	-	-	-	-
<b>Premium</b> .....	7,397	6,461	6,218	5,865	6,152	6,360	56,217	51,967	-7.9
Conventional .....	7,397	6,461	6,218	5,865	6,152	6,360	56,217	51,967	-7.9
Reformulated .....	-	-	-	-	-	-	-	-	-
<b>Total Distillate</b> .....	W	W	W	W	W	W	W	W	W
<b>No. 1 Distillate</b> .....	W	W	-	W	W	W	W	W	NA
<b>No. 2 Distillate</b> .....	W	W	48,424	W	W	W	W	W	NA
No. 2 Fuel Oil .....	-	-	-	-	-	-	W	-	NA
No. 2 Diesel Fuel .....	NA	NA	NA	NA	NA	NA	NA	NA	NA
Ultra Low Sulfur .....	43,146	43,147	43,009	44,502	45,259	42,776	311,795	345,988	10.5
Low Sulfur .....	W	W	5,415	W	W	W	W	W	NA
High Sulfur .....	-	-	-	-	-	-	W	-	NA
<b>No. 4 Fuel</b> .....	-	-	-	-	-	-	-	-	-
<b>Aviation Gasoline</b> .....	143	269	188	285	153	W	1,901	W	NA
<b>Kerosene-Type Jet Fuel</b> .....	5,313	5,111	5,627	6,819	6,371	6,995	49,133	46,369	-6.0
<b>Kerosene</b> .....	-	-	-	-	-	-	W	W	NA
<b>Propane</b> .....	9,054	7,242	5,448	5,097	19,266	19,236	85,667	92,617	7.7
<b>Residual Fuel Oil</b> .....	W	W	W	W	W	W	W	W	NA
Sulfur Content <= 1 % .....	W	W	W	W	W	W	W	W	NA
Sulfur Content > 1 % .....	W	W	W	W	W	W	W	W	NA
<b>Texas</b>									
<b>Motor Gasoline</b> .....	1,110,059	1,103,308	1,132,006	1,077,623	1,050,181	1,116,431	8,527,190	8,633,378	0.8
<b>Regular</b> .....	1,001,215	999,669	1,033,106	988,819	959,223	1,018,546	7,603,916	7,833,595	2.6
Conventional .....	627,186	620,486	636,031	600,013	576,778	617,691	4,860,716	4,805,290	-1.5
Reformulated .....	374,029	379,183	397,075	388,806	382,445	400,855	2,743,200	3,028,305	9.9
<b>Midgrade</b> .....	31,174	28,936	29,224	26,530	26,312	27,128	276,067	231,991	-16.3
Conventional .....	15,808	14,769	14,884	13,480	13,632	14,152	139,058	117,700	-15.7
Reformulated .....	15,366	14,167	14,340	13,050	12,680	12,976	137,009	114,291	-16.9
<b>Premium</b> .....	77,670	74,703	69,676	62,274	64,646	70,757	647,207	567,792	-12.6
Conventional .....	41,250	39,140	33,821	30,681	33,095	35,009	338,138	287,735	-15.3
Reformulated .....	36,420	35,563	35,855	31,593	31,551	35,748	309,069	280,057	-9.8
<b>Total Distillate</b> .....	W	W	W	W	W	W	W	W	W
<b>No. 1 Distillate</b> .....	-	-	-	-	-	-	-	-	-
<b>No. 2 Distillate</b> .....	567,796	669,230	634,622	545,403	558,762	554,686	4,543,379	4,647,342	1.9
No. 2 Fuel Oil .....	7,318	W	3,049	5,784	4,215	W	W	W	NA
No. 2 Diesel Fuel .....	NA	NA	NA	NA	NA	NA	NA	NA	NA
Ultra Low Sulfur .....	487,249	581,159	529,465	443,889	447,613	470,226	3,356,071	3,896,000	15.6
Low Sulfur .....	W	64,914	W	W	W	62,798	798,686	W	NA
High Sulfur .....	W	W	W	W	W	W	W	W	NA
<b>No. 4 Fuel</b> .....	W	W	W	W	W	W	W	W	NA
<b>Aviation Gasoline</b> .....	1,753	1,392	1,722	1,456	1,921	1,631	13,985	13,025	-7.2
<b>Kerosene-Type Jet Fuel</b> .....	214,691	205,542	203,965	254,373	246,505	251,913	1,832,204	1,807,366	-1.8
<b>Kerosene</b> .....	W	W	W	W	W	W	W	W	NA
<b>Propane</b> .....	400,582	326,078	372,147	364,576	363,405	335,887	3,264,729	3,013,708	-8.1
<b>Residual Fuel Oil</b> .....	82,391	83,196	70,565	66,350	78,767	65,281	605,717	607,395	-0.1
Sulfur Content <= 1 % .....	W	W	W	W	W	W	W	W	NA
Sulfur Content > 1 % .....	W	W	W	W	W	W	W	W	NA

See footnotes at end of table.

# Prime Supplier Sales Volumes of Petroleum Products by Grade, PAD District, and State

(Thousand Gallons) — Continued

Geographic Area Products	March 2008	April 2008	May 2008	June 2008	July 2008	August 2008	Cumulative Year To Date 2007	Cumulative Year To Date 2008	Adjusted Year To Date % Change <sup>1</sup>
<b>PAD District IV</b>									
<b>Motor Gasoline</b> .....	390,158	391,061	411,184	390,757	414,832	415,420	3,292,389	3,156,144	-4.5
<b>Regular</b> .....	326,886	330,741	351,448	334,946	354,106	352,638	2,733,239	2,669,667	-2.7
Conventional .....	326,886	330,741	351,448	334,946	354,106	352,638	2,733,239	2,669,667	-2.7
Reformulated .....	-	-	-	-	-	-	-	-	-
<b>Midgrade</b> .....	19,187	17,738	17,845	16,029	17,329	17,589	163,592	143,154	-12.9
Conventional .....	19,187	17,738	17,845	16,029	17,329	17,589	163,592	143,154	-12.9
Reformulated .....	-	-	-	-	-	-	-	-	-
<b>Premium</b> .....	44,085	42,582	41,891	39,782	43,397	45,193	395,558	343,323	-13.6
Conventional .....	44,085	42,582	41,891	39,782	43,397	45,193	395,558	343,323	-13.6
Reformulated .....	-	-	-	-	-	-	-	-	-
<b>Total Distillate</b> .....	W	W	W	W	W	W	W	W	W
<b>No. 1 Distillate</b> .....	W	W	374	W	W	W	W	W	NA
<b>No. 2 Distillate</b> .....	241,189	250,673	247,222	246,182	255,686	243,511	1,991,979	1,943,881	-2.8
No. 2 Fuel Oil .....	W	W	W	W	W	W	W	W	NA
No. 2 Diesel Fuel .....	NA	NA	NA	NA	NA	NA	NA	NA	NA
Ultra Low Sulfur .....	206,579	214,974	212,563	212,875	225,254	213,201	1,617,991	1,676,479	3.2
Low Sulfur .....	34,072	34,979	33,747	32,651	29,639	29,548	275,292	W	NA
High Sulfur .....	W	W	W	W	W	W	W	W	NA
<b>No. 4 Fuel</b> .....	-	-	W	-	-	-	W	W	NA
<b>Aviation Gasoline</b> .....	815	733	840	995	1,193	1,024	8,138	6,665	-18.4
<b>Kerosene-Type Jet Fuel</b> .....	70,747	67,956	79,106	74,054	76,113	72,520	560,279	573,431	1.9
<b>Kerosene</b> .....	W	W	W	W	W	W	W	W	NA
<b>Propane</b> .....	43,876	38,849	34,665	30,154	28,974	29,189	328,990	335,369	1.5
<b>Residual Fuel Oil</b> .....	2,795	3,227	2,232	1,992	2,026	1,479	20,755	19,249	-7.6
Sulfur Content <= 1 % .....	W	W	W	W	W	W	W	W	NA
Sulfur Content > 1 % .....	W	W	W	W	W	W	W	W	NA
<b>Colorado</b>									
<b>Motor Gasoline</b> .....	169,795	170,719	176,086	162,502	171,719	178,207	1,397,145	1,363,341	-2.8
<b>Regular</b> .....	139,337	142,131	148,144	136,639	144,165	148,925	1,139,982	1,133,579	-1.0
Conventional .....	139,337	142,131	148,144	136,639	144,165	148,925	1,139,982	1,133,579	-1.0
Reformulated .....	-	-	-	-	-	-	-	-	-
<b>Midgrade</b> .....	12,009	10,758	10,513	9,691	10,157	10,679	96,967	87,011	-10.6
Conventional .....	12,009	10,758	10,513	9,691	10,157	10,679	96,967	87,011	-10.6
Reformulated .....	-	-	-	-	-	-	-	-	-
<b>Premium</b> .....	18,449	17,830	17,429	16,172	17,397	18,603	160,196	142,751	-11.3
Conventional .....	18,449	17,830	17,429	16,172	17,397	18,603	160,196	142,751	-11.3
Reformulated .....	-	-	-	-	-	-	-	-	-
<b>Total Distillate</b> .....	W	W	W	W	W	W	W	W	W
<b>No. 1 Distillate</b> .....	W	W	W	W	W	W	W	W	NA
<b>No. 2 Distillate</b> .....	65,989	71,024	69,426	72,885	W	69,348	W	W	NA
No. 2 Fuel Oil .....	-	-	-	-	-	-	W	-	NA
No. 2 Diesel Fuel .....	NA	NA	NA	NA	NA	NA	NA	NA	NA
Ultra Low Sulfur .....	57,355	62,712	W	W	63,894	W	453,226	W	NA
Low Sulfur .....	8,634	8,312	W	W	W	W	W	W	NA
High Sulfur .....	-	-	W	-	-	-	-	-	-
<b>No. 4 Fuel</b> .....	-	-	W	-	-	-	-	W	NA
<b>Aviation Gasoline</b> .....	162	130	127	248	247	323	1,495	1,463	-2.5
<b>Kerosene-Type Jet Fuel</b> .....	43,673	41,265	54,221	44,143	43,272	42,534	327,764	350,288	6.4
<b>Kerosene</b> .....	W	W	-	W	-	W	W	W	NA
<b>Propane</b> .....	15,991	12,177	8,826	7,955	7,830	8,026	107,337	103,011	-4.4
<b>Residual Fuel Oil</b> .....	-	-	-	-	-	-	W	-	NA
Sulfur Content <= 1 % .....	-	-	-	-	-	-	W	-	NA
Sulfur Content > 1 % .....	-	-	-	-	-	-	-	-	-

See footnotes at end of table.

# Prime Supplier Sales Volumes of Petroleum Products by Grade, PAD District, and State

(Thousand Gallons) — Continued

Geographic Area Products	March 2008	April 2008	May 2008	June 2008	July 2008	August 2008	Cumulative Year To Date 2007	Cumulative Year To Date 2008	Adjusted Year To Date % Change <sup>1</sup>
<b>Idaho</b>									
<b>Motor Gasoline</b> .....	52,536	54,002	58,325	55,196	60,675	58,968	456,610	437,502	-4.6
<b>Regular</b> .....	47,075	48,635	52,690	50,252	54,548	52,873	400,916	393,094	-2.4
Conventional .....	47,075	48,635	52,690	50,252	54,548	52,873	400,916	393,094	-2.4
Reformulated .....	-	-	-	-	-	-	-	-	-
<b>Midgrade</b> .....	990	1,045	1,068	657	1,145	1,145	11,228	7,788	-30.9
Conventional .....	990	1,045	1,068	657	1,145	1,145	11,228	7,788	-30.9
Reformulated .....	-	-	-	-	-	-	-	-	-
<b>Premium</b> .....	4,471	4,322	4,567	4,287	4,982	4,950	44,466	36,620	-18.0
Conventional .....	4,471	4,322	4,567	4,287	4,982	4,950	44,466	36,620	-18.0
Reformulated .....	-	-	-	-	-	-	-	-	-
<b>Total Distillate</b> .....	W	W	W	W	W	W	W	W	W
<b>No. 1 Distillate</b> .....	228	46	21	106	W	86	W	W	NA
<b>No. 2 Distillate</b> .....	25,065	27,676	27,009	25,697	W	26,453	W	W	NA
No. 2 Fuel Oil .....	W	W	W	W	W	W	W	W	NA
No. 2 Diesel Fuel .....	NA	NA	NA	NA	NA	NA	NA	NA	NA
Ultra Low Sulfur .....	21,903	24,376	W	W	23,324	W	197,248	W	NA
Low Sulfur .....	W	W	W	W	W	W	W	W	NA
High Sulfur .....	-	-	-	-	-	-	W	-	NA
<b>No. 4 Fuel</b> .....	-	-	-	-	-	-	-	-	-
<b>Aviation Gasoline</b> .....	W	95	92	130	214	198	1,315	W	NA
<b>Kerosene-Type Jet Fuel</b> .....	2,341	2,518	2,807	2,764	3,361	3,021	21,984	21,854	-1.0
<b>Kerosene</b> .....	-	-	-	-	-	-	-	-	-
<b>Propane</b> .....	4,762	4,264	3,444	2,792	2,536	2,643	34,441	35,789	3.5
<b>Residual Fuel Oil</b> .....	-	-	-	-	-	-	-	-	-
Sulfur Content <= 1 % .....	-	-	-	-	-	-	-	-	-
Sulfur Content > 1 % .....	-	-	-	-	-	-	-	-	-
<b>Montana</b>									
<b>Motor Gasoline</b> .....	49,656	48,910	55,820	55,761	62,445	61,288	442,407	425,474	-4.2
<b>Regular</b> .....	43,176	42,271	48,493	48,793	54,187	52,640	380,997	368,067	-3.8
Conventional .....	43,176	42,271	48,493	48,793	54,187	52,640	380,997	368,067	-3.8
Reformulated .....	-	-	-	-	-	-	-	-	-
<b>Midgrade</b> .....	1,946	1,979	2,476	2,192	2,453	2,711	15,099	17,746	17.0
Conventional .....	1,946	1,979	2,476	2,192	2,453	2,711	15,099	17,746	17.0
Reformulated .....	-	-	-	-	-	-	-	-	-
<b>Premium</b> .....	4,534	4,660	4,851	4,776	5,805	5,937	46,311	39,661	-14.7
Conventional .....	4,534	4,660	4,851	4,776	5,805	5,937	46,311	39,661	-14.7
Reformulated .....	-	-	-	-	-	-	-	-	-
<b>Total Distillate</b> .....	W	W	W	W	W	W	W	W	W
<b>No. 1 Distillate</b> .....	322	228	150	139	129	189	W	W	NA
<b>No. 2 Distillate</b> .....	47,143	46,419	48,828	48,051	53,471	49,488	375,773	379,802	0.7
No. 2 Fuel Oil .....	W	W	W	W	W	W	W	W	NA
No. 2 Diesel Fuel .....	NA	NA	NA	NA	NA	NA	NA	NA	NA
Ultra Low Sulfur .....	42,739	43,010	45,262	44,473	49,399	45,627	330,394	349,048	5.2
Low Sulfur .....	W	W	W	W	W	W	W	W	NA
High Sulfur .....	-	-	-	-	-	-	W	-	NA
<b>No. 4 Fuel</b> .....	-	-	-	-	-	-	-	-	-
<b>Aviation Gasoline</b> .....	230	148	W	W	W	W	W	W	NA
<b>Kerosene-Type Jet Fuel</b> .....	2,542	2,148	2,266	2,952	3,625	3,469	26,479	22,084	-16.9
<b>Kerosene</b> .....	-	-	-	-	-	-	W	W	NA
<b>Propane</b> .....	7,367	7,436	7,120	7,351	7,043	6,018	62,959	69,172	9.4
<b>Residual Fuel Oil</b> .....	W	W	W	W	W	W	W	W	NA
Sulfur Content <= 1 % .....	-	-	-	-	-	-	-	-	-
Sulfur Content > 1 % .....	W	W	W	W	W	W	W	W	NA

See footnotes at end of table.

# Prime Supplier Sales Volumes of Petroleum Products by Grade, PAD District, and State

(Thousand Gallons) — Continued

Geographic Area Products	March 2008	April 2008	May 2008	June 2008	July 2008	August 2008	Cumulative Year To Date 2007	Cumulative Year To Date 2008	Adjusted Year To Date % Change <sup>1</sup>
<b>Utah</b>									
<b>Motor Gasoline</b> .....	91,570	90,188	89,694	87,032	87,072	86,133	752,676	702,496	-7.0
<b>Regular</b> .....	73,834	73,480	74,137	72,443	72,243	71,417	601,226	574,702	-4.8
Conventional .....	73,834	73,480	74,137	72,443	72,243	71,417	601,226	574,702	-4.8
Reformulated .....	-	-	-	-	-	-	-	-	-
<b>Midgrade</b> .....	3,912	3,676	3,479	3,152	3,190	2,695	36,604	28,033	-23.7
Conventional .....	3,912	3,676	3,479	3,152	3,190	2,695	36,604	28,033	-23.7
Reformulated .....	-	-	-	-	-	-	-	-	-
<b>Premium</b> .....	13,824	13,032	12,078	11,437	11,639	12,021	114,846	99,761	-13.5
Conventional .....	13,824	13,032	12,078	11,437	11,639	12,021	114,846	99,761	-13.5
Reformulated .....	-	-	-	-	-	-	-	-	-
<b>Total Distillate</b> .....	W	W	W	W	W	W	W	W	W
<b>No. 1 Distillate</b> .....	W	W	W	W	W	W	W	W	NA
<b>No. 2 Distillate</b> .....	43,887	46,309	42,384	44,768	47,532	39,909	392,723	357,300	-9.4
No. 2 Fuel Oil .....	-	-	-	-	-	-	W	-	NA
No. 2 Diesel Fuel .....	NA	NA	NA	NA	NA	NA	NA	NA	NA
Ultra Low Sulfur .....	35,059	36,270	33,726	34,683	37,248	31,040	303,386	281,905	-7.5
Low Sulfur .....	W	W	W	W	W	W	W	W	NA
High Sulfur .....	W	W	W	W	W	W	W	W	NA
<b>No. 4 Fuel</b> .....	-	-	-	-	-	-	W	-	NA
<b>Aviation Gasoline</b> .....	307	340	425	429	431	220	3,041	2,598	-14.9
<b>Kerosene-Type Jet Fuel</b> .....	20,982	20,824	18,453	22,984	24,574	21,738	174,226	168,924	-3.4
<b>Kerosene</b> .....	W	W	W	W	W	W	W	W	NA
<b>Propane</b> .....	3,732	3,217	2,649	2,350	2,259	2,118	28,270	29,662	4.5
<b>Residual Fuel Oil</b> .....	1,910	2,728	1,717	1,633	1,562	W	16,597	W	NA
Sulfur Content <= 1 % .....	W	W	W	W	W	-	W	W	NA
Sulfur Content > 1 % .....	W	W	W	W	W	W	W	W	NA
<b>Wyoming</b>									
<b>Motor Gasoline</b> .....	26,601	27,242	31,259	30,266	32,921	30,824	243,551	227,331	-7.0
<b>Regular</b> .....	23,464	24,224	27,984	26,819	28,963	26,783	210,118	200,225	-5.1
Conventional .....	23,464	24,224	27,984	26,819	28,963	26,783	210,118	200,225	-5.1
Reformulated .....	-	-	-	-	-	-	-	-	-
<b>Midgrade</b> .....	330	280	309	337	384	359	3,694	2,576	-30.6
Conventional .....	330	280	309	337	384	359	3,694	2,576	-30.6
Reformulated .....	-	-	-	-	-	-	-	-	-
<b>Premium</b> .....	2,807	2,738	2,966	3,110	3,574	3,682	29,739	24,530	-17.9
Conventional .....	2,807	2,738	2,966	3,110	3,574	3,682	29,739	24,530	-17.9
Reformulated .....	-	-	-	-	-	-	-	-	-
<b>Total Distillate</b> .....	W	W	W	W	W	W	W	W	W
<b>No. 1 Distillate</b> .....	646	93	70	63	56	34	7,884	5,545	-30.0
<b>No. 2 Distillate</b> .....	59,105	59,245	59,575	54,781	57,964	58,313	443,215	449,795	1.1
No. 2 Fuel Oil .....	-	-	-	-	-	-	-	-	-
No. 2 Diesel Fuel .....	NA	NA	NA	NA	NA	NA	NA	NA	NA
Ultra Low Sulfur .....	49,523	48,606	48,126	45,981	51,389	49,927	333,737	373,992	11.6
Low Sulfur .....	9,582	10,639	11,449	8,800	6,575	W	W	W	NA
High Sulfur .....	-	-	-	-	-	W	W	W	NA
<b>No. 4 Fuel</b> .....	-	-	-	-	-	-	-	-	-
<b>Aviation Gasoline</b> .....	W	20	W	W	W	W	W	W	NA
<b>Kerosene-Type Jet Fuel</b> .....	1,209	1,201	1,359	1,211	1,281	1,758	9,826	10,281	4.2
<b>Kerosene</b> .....	-	-	-	-	-	-	-	-	-
<b>Propane</b> .....	12,024	11,755	12,626	9,706	9,306	10,384	95,983	97,735	1.4
<b>Residual Fuel Oil</b> .....	W	W	W	W	W	W	W	W	NA
Sulfur Content <= 1 % .....	W	W	W	W	W	W	W	W	NA
Sulfur Content > 1 % .....	-	-	-	-	-	-	W	-	NA

See footnotes at end of table.

# Prime Supplier Sales Volumes of Petroleum Products by Grade, PAD District, and State

(Thousand Gallons) — Continued

Geographic Area Products	March 2008	April 2008	May 2008	June 2008	July 2008	August 2008	Cumulative Year To Date 2007	Cumulative Year To Date 2008	Adjusted Year To Date % Change <sup>1</sup>
<b>PAD District V</b>									
<b>Motor Gasoline</b> .....	1,972,464	1,947,872	2,004,174	1,914,493	1,949,739	1,995,989	16,400,477	15,538,851	-5.6
<b>Regular</b> .....	1,636,681	1,627,004	1,687,906	1,628,932	1,648,831	1,679,800	13,397,783	12,996,548	-3.4
Conventional .....	511,687	518,733	552,800	526,557	554,248	558,518	4,248,871	4,190,965	-1.8
Reformulated .....	1,124,994	1,108,271	1,135,106	1,102,375	1,094,583	1,121,282	9,148,912	8,805,583	-4.1
<b>Midgrade</b> .....	84,687	80,862	80,119	70,411	72,473	75,232	797,214	635,409	-20.6
Conventional .....	20,808	21,304	20,889	18,100	18,996	20,074	202,131	162,788	-19.8
Reformulated .....	63,879	59,558	59,230	52,311	53,477	55,158	595,083	472,621	-20.9
<b>Premium</b> .....	251,096	240,006	236,149	215,150	228,435	240,957	2,205,480	1,906,894	-13.9
Conventional .....	57,444	58,959	57,677	52,452	59,096	62,519	515,778	462,241	-10.7
Reformulated .....	193,652	181,047	178,472	162,698	169,339	178,438	1,689,702	1,444,653	-14.9
<b>Total Distillate</b> .....	W	W	W	W	W	W	W	W	W
<b>No. 1 Distillate</b> .....	9,811	6,754	W	W	W	6,514	W	W	NA
<b>No. 2 Distillate</b> .....	632,383	659,626	663,918	695,465	735,738	729,721	5,549,330	5,342,481	-4.1
No. 2 Fuel Oil .....	7,948	4,967	9,630	7,619	10,520	9,901	W	W	NA
No. 2 Diesel Fuel .....	NA	NA	NA	NA	NA	NA	NA	NA	NA
Ultra Low Sulfur .....	542,946	575,381	582,228	594,284	635,578	627,383	4,610,609	4,576,686	-1.1
Low Sulfur .....	66,119	67,427	63,137	66,304	59,165	63,452	380,918	537,404	40.5
High Sulfur .....	15,370	11,851	8,923	27,258	30,475	28,985	W	W	NA
<b>No. 4 Fuel</b> .....	W	W	W	W	W	W	W	W	NA
<b>Aviation Gasoline</b> .....	3,321	4,342	4,845	5,499	4,701	4,970	38,520	33,421	-13.6
<b>Kerosene-Type Jet Fuel</b> .....	553,187	536,463	575,572	552,625	610,675	563,957	4,790,180	4,473,975	-7.0
<b>Kerosene</b> .....	W	W	W	W	W	W	W	W	NA
<b>Propane</b> .....	90,081	81,206	65,364	57,428	56,409	55,017	656,476	636,698	-3.4
<b>Residual Fuel Oil</b> .....	183,374	213,567	219,867	198,232	206,554	207,330	1,836,548	1,677,655	-9.0
Sulfur Content <= 1 % .....	51,801	55,387	43,309	67,455	46,326	65,503	469,469	429,775	-8.8
Sulfur Content > 1 % .....	131,573	158,180	176,558	130,777	160,228	141,827	1,367,079	1,247,880	-9.1
<b>Alaska</b>									
<b>Motor Gasoline</b> .....	19,542	19,732	23,485	24,697	25,748	24,199	183,549	176,425	-4.3
<b>Regular</b> .....	18,094	18,379	22,099	23,408	24,344	22,812	168,978	165,045	-2.7
Conventional .....	18,094	18,379	22,099	23,408	24,344	22,812	168,978	165,045	-2.7
Reformulated .....	-	-	-	-	-	-	-	-	-
<b>Midgrade</b> .....	884	803	817	775	889	834	8,963	6,947	-22.8
Conventional .....	884	803	817	775	889	834	8,963	6,947	-22.8
Reformulated .....	-	-	-	-	-	-	-	-	-
<b>Premium</b> .....	564	550	569	514	515	553	5,608	4,433	-21.3
Conventional .....	564	550	569	514	515	553	5,608	4,433	-21.3
Reformulated .....	-	-	-	-	-	-	-	-	-
<b>Total Distillate</b> .....	W	W	W	W	W	W	W	W	W
<b>No. 1 Distillate</b> .....	W	W	W	W	W	W	W	W	NA
<b>No. 2 Distillate</b> .....	W	W	W	W	W	W	W	W	NA
No. 2 Fuel Oil .....	W	W	8,511	6,823	W	W	W	W	NA
No. 2 Diesel Fuel .....	NA	NA	NA	NA	NA	NA	NA	NA	NA
Ultra Low Sulfur .....	W	W	W	W	W	W	W	W	NA
Low Sulfur .....	320	273	884	1,408	W	W	W	W	NA
High Sulfur .....	W	W	W	W	W	W	W	W	NA
<b>No. 4 Fuel</b> .....	-	-	-	-	-	-	-	-	-
<b>Aviation Gasoline</b> .....	W	W	W	W	W	W	W	W	NA
<b>Kerosene-Type Jet Fuel</b> .....	75,259	77,341	76,086	82,522	83,724	71,636	692,472	602,316	-13.4
<b>Kerosene</b> .....	-	-	-	-	-	-	-	-	-
<b>Propane</b> .....	W	W	W	W	W	W	W	W	NA
<b>Residual Fuel Oil</b> .....	-	-	-	-	-	-	W	-	NA
Sulfur Content <= 1 % .....	-	-	-	-	-	-	-	-	-
Sulfur Content > 1 % .....	-	-	-	-	-	-	W	-	NA

See footnotes at end of table.

# Prime Supplier Sales Volumes of Petroleum Products by Grade, PAD District, and State

(Thousand Gallons) — Continued

Geographic Area Products	March 2008	April 2008	May 2008	June 2008	July 2008	August 2008	Cumulative Year To Date 2007	Cumulative Year To Date 2008	Adjusted Year To Date % Change <sup>1</sup>
<b>Arizona</b>									
<b>Motor Gasoline</b> .....	218,903	226,162	217,874	197,515	199,819	211,804	1,790,178	1,684,289	-6.3
<b>Regular</b> .....	191,018	198,871	191,770	176,145	178,415	188,000	1,548,916	1,483,324	-4.6
Conventional .....	108,693	106,823	W	94,167	98,988	102,692	W	W	NA
Reformulated .....	82,325	92,048	W	81,978	79,427	85,308	W	W	NA
<b>Midgrade</b> .....	5,838	5,624	4,888	3,837	3,858	4,599	52,375	40,234	-23.5
Conventional .....	3,841	3,829	3,497	2,651	2,715	3,307	32,302	27,263	-15.9
Reformulated .....	1,997	1,795	1,391	1,186	1,143	1,292	20,073	12,971	-35.6
<b>Premium</b> .....	22,047	21,667	21,216	17,533	17,546	19,205	188,887	160,731	-15.3
Conventional .....	10,375	10,871	W	7,971	8,637	9,356	85,409	W	NA
Reformulated .....	11,672	10,796	W	9,562	8,909	9,849	103,478	W	NA
<b>Total Distillate</b> .....	W	W	W	W	W	W	W	W	W
<b>No. 1 Distillate</b> .....	-	W	-	-	-	-	W	W	NA
<b>No. 2 Distillate</b> .....	78,769	W	79,757	80,462	82,093	83,850	W	W	NA
No. 2 Fuel Oil .....	-	-	-	-	-	-	W	-	NA
No. 2 Diesel Fuel .....	NA	NA	NA	NA	NA	NA	NA	NA	NA
Ultra Low Sulfur .....	64,858	69,139	69,742	70,530	71,348	73,197	540,393	W	NA
Low Sulfur .....	13,911	15,278	10,015	9,932	10,745	10,653	W	W	NA
High Sulfur .....	-	W	-	-	-	-	W	W	NA
<b>No. 4 Fuel</b> .....	-	-	-	-	-	-	-	-	-
<b>Aviation Gasoline</b> .....	578	701	586	506	506	484	5,160	4,341	-16.2
<b>Kerosene-Type Jet Fuel</b> .....	19,310	16,237	W	W	21,956	W	W	W	NA
<b>Kerosene</b> .....	-	-	-	-	-	-	W	-	NA
<b>Propane</b> .....	9,596	6,629	6,104	4,553	4,558	4,785	62,051	68,554	10.0
<b>Residual Fuel Oil</b> .....	W	W	W	W	W	W	W	W	NA
Sulfur Content <= 1 % .....	W	W	W	W	W	W	W	W	NA
Sulfur Content > 1 % .....	-	-	-	W	W	-	-	W	NA
<b>California</b>									
<b>Motor Gasoline</b> .....	1,275,001	1,239,523	1,274,156	1,224,658	1,227,920	1,258,429	10,540,366	9,921,256	-6.3
<b>Regular</b> .....	1,033,060	1,012,291	1,049,430	1,020,397	1,015,156	1,035,974	8,390,788	8,108,087	-3.8
Conventional .....	-	-	-	-	-	-	-	-	-
Reformulated .....	1,033,060	1,012,291	1,049,430	1,020,397	1,015,156	1,035,974	8,390,788	8,108,087	-3.8
<b>Midgrade</b> .....	61,259	57,533	57,839	51,125	52,334	53,866	571,874	457,370	-20.4
Conventional .....	-	-	-	-	-	-	-	-	-
Reformulated .....	61,259	57,533	57,839	51,125	52,334	53,866	571,874	457,370	-20.4
<b>Premium</b> .....	180,682	169,699	166,887	153,136	160,430	168,589	1,577,704	1,355,799	-14.4
Conventional .....	-	-	-	-	-	-	-	-	-
Reformulated .....	180,682	169,699	166,887	153,136	160,430	168,589	1,577,704	1,355,799	-14.4
<b>Total Distillate</b> .....	W	W	W	W	W	W	W	W	W
<b>No. 1 Distillate</b> .....	-	-	-	-	-	-	-	-	-
<b>No. 2 Distillate</b> .....	334,051	354,366	358,078	W	W	W	2,879,647	W	NA
No. 2 Fuel Oil .....	-	-	-	-	W	-	W	W	NA
No. 2 Diesel Fuel .....	NA	NA	NA	NA	NA	NA	NA	NA	NA
Ultra Low Sulfur .....	W	W	W	357,275	393,549	W	W	W	NA
Low Sulfur .....	-	-	-	-	-	-	W	-	NA
High Sulfur .....	W	W	W	W	W	W	W	W	NA
<b>No. 4 Fuel</b> .....	W	W	W	-	-	-	W	W	NA
<b>Aviation Gasoline</b> .....	1,425	1,467	1,358	1,472	1,416	1,651	14,733	11,152	-24.6
<b>Kerosene-Type Jet Fuel</b> .....	326,472	303,986	328,776	315,955	333,452	328,219	2,720,671	2,557,021	-6.4
<b>Kerosene</b> .....	W	W	W	W	W	W	W	W	NA
<b>Propane</b> .....	51,969	44,674	39,388	34,272	34,490	31,487	394,987	370,097	-6.7
<b>Residual Fuel Oil</b> .....	97,609	131,074	132,398	104,522	121,131	112,227	1,123,469	961,932	-14.7
Sulfur Content <= 1 % .....	W	W	17,972	18,056	19,550	17,687	W	W	NA
Sulfur Content > 1 % .....	W	W	114,426	86,466	101,581	94,540	W	W	NA

See footnotes at end of table.

# Prime Supplier Sales Volumes of Petroleum Products by Grade, PAD District, and State

(Thousand Gallons) — Continued

Geographic Area Products	March 2008	April 2008	May 2008	June 2008	July 2008	August 2008	Cumulative Year To Date 2007	Cumulative Year To Date 2008	Adjusted Year To Date % Change <sup>1</sup>
<b>Hawaii</b>									
<b>Motor Gasoline</b> .....	39,537	38,379	40,261	37,922	43,249	42,758	316,600	319,093	0.4
<b>Regular</b> .....	29,929	29,187	31,159	29,865	34,224	33,787	235,912	246,120	3.9
Conventional .....	29,929	29,187	31,159	29,865	34,224	33,787	235,912	246,120	3.9
Reformulated .....	-	-	-	-	-	-	-	-	-
<b>Midgrade</b> .....	3,143	2,984	3,082	2,721	2,822	2,767	27,996	23,597	-16.1
Conventional .....	3,143	2,984	3,082	2,721	2,822	2,767	27,996	23,597	-16.1
Reformulated .....	-	-	-	-	-	-	-	-	-
<b>Premium</b> .....	6,465	6,208	6,020	5,336	6,203	6,204	52,692	49,376	-6.7
Conventional .....	6,465	6,208	6,020	5,336	6,203	6,204	52,692	49,376	-6.7
Reformulated .....	-	-	-	-	-	-	-	-	-
<b>Total Distillate</b> .....	W	W	W	W	W	W	W	W	W
<b>No. 1 Distillate</b> .....	-	-	-	-	-	-	-	-	-
<b>No. 2 Distillate</b> .....	16,410	19,196	16,444	17,513	18,475	17,828	191,855	142,506	-26.0
No. 2 Fuel Oil .....	-	-	-	-	-	-	-	-	-
No. 2 Diesel Fuel .....	NA	NA	NA	NA	NA	NA	NA	NA	NA
Ultra Low Sulfur .....	4,911	4,977	4,925	4,623	6,212	6,274	37,371	41,588	10.8
Low Sulfur .....	W	W	W	W	W	W	W	W	NA
High Sulfur .....	W	W	W	W	W	W	W	W	NA
<b>No. 4 Fuel</b> .....	-	-	-	-	-	-	-	-	-
<b>Aviation Gasoline</b> .....	W	W	W	W	W	W	W	W	NA
<b>Kerosene-Type Jet Fuel</b> .....	W	W	W	W	W	W	W	W	NA
<b>Kerosene</b> .....	-	-	-	-	-	-	-	-	-
<b>Propane</b> .....	W	W	W	W	W	W	W	W	NA
<b>Residual Fuel Oil</b> .....	W	W	W	W	W	W	W	W	NA
Sulfur Content <= 1 % .....	W	W	W	W	W	W	W	W	NA
Sulfur Content > 1 % .....	W	W	W	W	W	W	W	W	NA
<b>Nevada</b>									
<b>Motor Gasoline</b> .....	74,223	78,080	80,727	80,126	84,246	85,169	684,579	629,027	-8.5
<b>Regular</b> .....	60,278	63,598	67,304	68,013	70,363	69,663	548,134	516,823	-6.1
Conventional .....	50,669	59,666	W	68,013	70,363	69,663	W	W	NA
Reformulated .....	NA	3,932	W	-	-	-	W	W	NA
<b>Midgrade</b> .....	3,624	3,748	3,520	3,155	3,341	3,553	34,857	28,465	-18.7
Conventional .....	3,001	3,518	3,520	3,155	3,341	3,553	31,721	26,185	-17.8
Reformulated .....	NA	230	-	-	-	-	3,136	W	NA
<b>Premium</b> .....	10,321	10,734	9,903	8,958	10,542	11,953	101,588	83,739	-17.9
Conventional .....	9,023	10,182	W	8,958	10,542	11,953	93,068	W	NA
Reformulated .....	NA	552	W	-	-	-	8,520	W	NA
<b>Total Distillate</b> .....	W	W	W	W	W	W	W	W	W
<b>No. 1 Distillate</b> .....	W	W	-	-	-	-	W	W	NA
<b>No. 2 Distillate</b> .....	34,509	35,479	W	W	W	W	W	W	NA
No. 2 Fuel Oil .....	-	-	-	W	-	-	-	W	NA
No. 2 Diesel Fuel .....	NA	NA	NA	NA	NA	NA	NA	NA	NA
Ultra Low Sulfur .....	W	W	28,528	30,181	31,388	33,069	W	W	NA
Low Sulfur .....	6,655	6,360	6,550	W	6,728	6,773	W	W	NA
High Sulfur .....	W	W	W	W	W	W	W	W	NA
<b>No. 4 Fuel</b> .....	W	W	W	W	W	W	W	W	NA
<b>Aviation Gasoline</b> .....	W	W	W	W	W	W	W	W	NA
<b>Kerosene-Type Jet Fuel</b> .....	26,796	27,451	27,020	27,841	29,254	23,309	213,324	228,957	6.9
<b>Kerosene</b> .....	-	-	-	-	-	-	-	-	-
<b>Propane</b> .....	2,904	2,172	1,851	1,520	1,404	1,348	19,382	21,754	11.8
<b>Residual Fuel Oil</b> .....	-	-	-	-	-	-	W	-	NA
Sulfur Content <= 1 % .....	-	-	-	-	-	-	W	-	NA
Sulfur Content > 1 % .....	-	-	-	-	-	-	-	-	-

See footnotes at end of table.

# Prime Supplier Sales Volumes of Petroleum Products by Grade, PAD District, and State

(Thousand Gallons) — Continued

Geographic Area Products	March 2008	April 2008	May 2008	June 2008	July 2008	August 2008	Cumulative Year To Date 2007	Cumulative Year To Date 2008	Adjusted Year To Date % Change <sup>1</sup>
<b>Oregon</b>									
<b>Motor Gasoline</b> .....	122,264	125,761	130,717	124,186	133,271	134,214	1,027,509	1,003,311	-2.8
<b>Regular</b> .....	111,432	114,120	119,281	113,226	121,327	121,927	921,308	911,855	-1.4
Conventional .....	111,432	114,120	119,281	113,226	121,327	121,927	921,308	911,855	-1.4
Reformulated .....	-	-	-	-	-	-	-	-	-
<b>Midgrade</b> .....	2,207	2,427	2,165	1,961	2,084	2,075	24,947	17,980	-28.2
Conventional .....	2,207	2,427	2,165	1,961	2,084	2,075	24,947	17,980	-28.2
Reformulated .....	-	-	-	-	-	-	-	-	-
<b>Premium</b> .....	8,625	9,214	9,271	8,999	9,860	10,212	81,254	73,476	-9.9
Conventional .....	8,625	9,214	9,271	8,999	9,860	10,212	81,254	73,476	-9.9
Reformulated .....	-	-	-	-	-	-	-	-	-
<b>Total Distillate</b> .....	W	W	W	W	W	W	W	W	W
<b>No. 1 Distillate</b> .....	W	W	W	W	-	W	W	W	NA
<b>No. 2 Distillate</b> .....	W	W	W	W	72,493	W	W	W	NA
No. 2 Fuel Oil .....	-	-	W	W	-	-	W	W	NA
No. 2 Diesel Fuel .....	NA	NA	NA	NA	NA	NA	NA	NA	NA
Ultra Low Sulfur .....	47,656	48,403	51,578	W	W	54,404	W	W	NA
Low Sulfur .....	17,072	W	W	14,879	15,065	17,622	W	W	NA
High Sulfur .....	W	-	-	-	W	W	W	W	NA
<b>No. 4 Fuel</b> .....	-	-	-	-	-	-	-	-	-
<b>Aviation Gasoline</b> .....	97	127	346	165	210	275	W	1,402	NA
<b>Kerosene-Type Jet Fuel</b> .....	W	W	18,590	17,480	W	18,146	W	W	NA
<b>Kerosene</b> .....	-	-	-	-	-	-	-	-	-
<b>Propane</b> .....	4,995	5,303	4,151	3,488	3,033	3,143	38,857	37,974	-2.7
<b>Residual Fuel Oil</b> .....	3,611	3,055	4,116	3,840	3,039	3,924	44,228	W	NA
Sulfur Content <= 1 % .....	-	W	W	W	W	W	W	W	NA
Sulfur Content > 1 % .....	3,611	W	W	W	W	W	W	W	NA
<b>Washington</b>									
<b>Motor Gasoline</b> .....	222,994	220,235	236,954	225,389	235,486	239,416	1,857,696	1,805,450	-3.2
<b>Regular</b> .....	192,870	190,558	206,863	197,878	205,002	207,637	1,583,747	1,565,294	-1.6
Conventional .....	192,870	190,558	206,863	197,878	205,002	207,637	1,583,747	1,565,294	-1.6
Reformulated .....	-	-	-	-	-	-	-	-	-
<b>Midgrade</b> .....	7,732	7,743	7,808	6,837	7,145	7,538	76,202	60,816	-20.5
Conventional .....	7,732	7,743	7,808	6,837	7,145	7,538	76,202	60,816	-20.5
Reformulated .....	-	-	-	-	-	-	-	-	-
<b>Premium</b> .....	22,392	21,934	22,283	20,674	23,339	24,241	197,747	179,340	-9.7
Conventional .....	22,392	21,934	22,283	20,674	23,339	24,241	197,747	179,340	-9.7
Reformulated .....	-	-	-	-	-	-	-	-	-
<b>Total Distillate</b> .....	W	W	W	W	W	W	W	W	W
<b>No. 1 Distillate</b> .....	W	W	W	W	W	W	W	W	NA
<b>No. 2 Distillate</b> .....	W	W	W	W	W	W	W	W	NA
No. 2 Fuel Oil .....	W	W	W	W	W	W	W	W	NA
No. 2 Diesel Fuel .....	NA	NA	NA	NA	NA	NA	NA	NA	NA
Ultra Low Sulfur .....	60,041	63,221	63,303	66,839	65,560	W	W	W	NA
Low Sulfur .....	W	W	23,629	24,643	18,346	20,016	W	W	NA
High Sulfur .....	NA	-	W	W	W	W	225,293	W	NA
<b>No. 4 Fuel</b> .....	-	-	-	-	-	-	-	-	-
<b>Aviation Gasoline</b> .....	314	1,017	1,227	647	590	845	5,411	5,580	2.7
<b>Kerosene-Type Jet Fuel</b> .....	46,408	57,281	72,238	65,178	86,574	68,866	525,481	509,982	-3.3
<b>Kerosene</b> .....	-	-	-	-	-	-	W	W	NA
<b>Propane</b> .....	18,774	21,091	12,578	11,962	11,454	12,666	113,166	125,551	10.5
<b>Residual Fuel Oil</b> .....	38,512	33,740	48,577	32,094	48,826	36,916	308,359	332,124	7.3
Sulfur Content <= 1 % .....	W	-	W	W	W	W	W	W	NA
Sulfur Content > 1 % .....	W	33,740	W	W	W	W	W	W	NA

Dash (-) = No data reported.

NA = Not available.

W = Withheld to avoid disclosure of individual company data.

<sup>1</sup> Calculated on a per day basis.

Notes: In January 2007, oxygenated was combined with conventional gasoline and ultra low sulfur diesel was added. Values shown for the current month are preliminary. Values shown for previous months are revised. Data are final upon publication in the *Petroleum Marketing Annual*.

Source: Energy Information Administration, Form EIA-782C, "Monthly Report of Prime Supplier Sales of Petroleum Products Sold for Local Consumption."