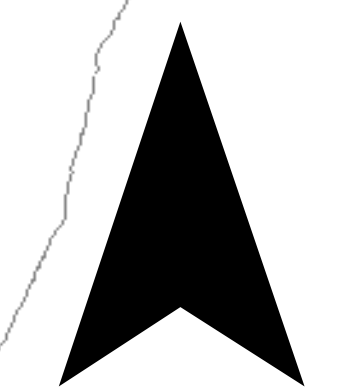
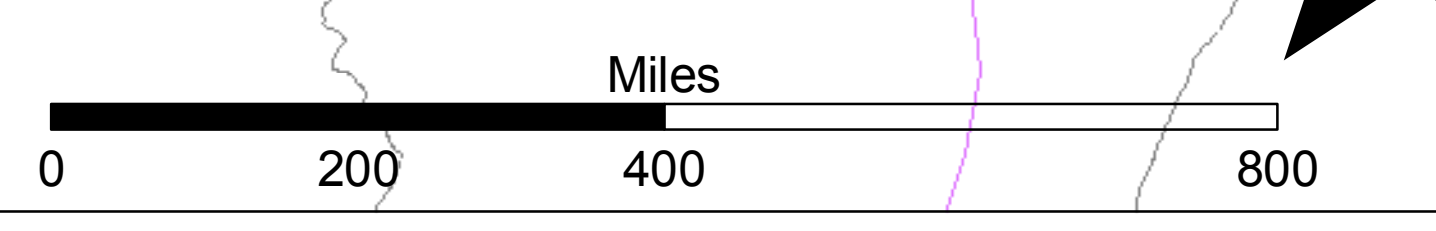
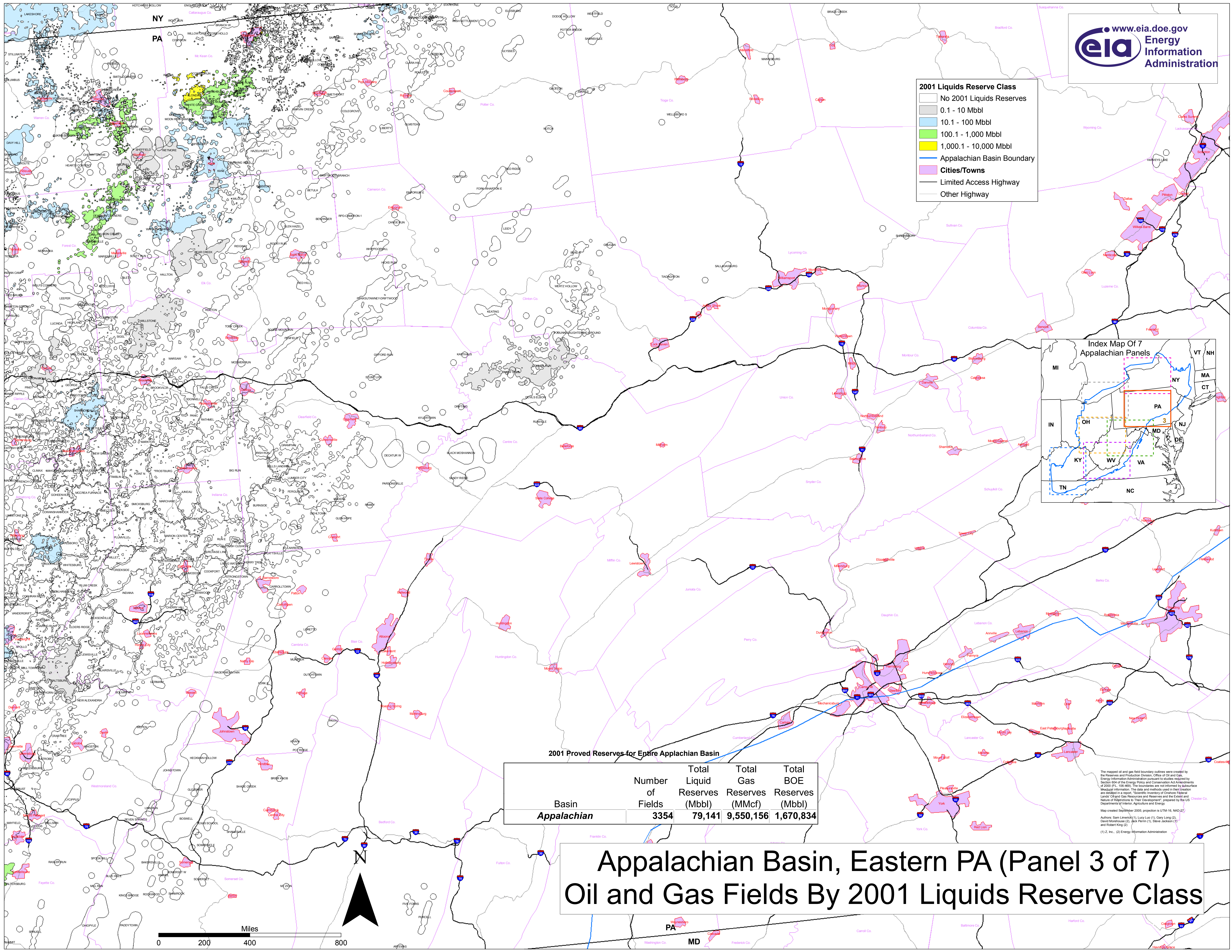


2001 Proved Reserves for Entire Appalachian Basin

Basin	Number of Fields	Total Liquid Reserves (Mbbl)	Total Gas Reserves (MMcf)	Total BOE Reserves (Mbbl)
Appalachian	3354	79,141	9,550,156	1,670,834

Appalachian Basin, Eastern PA (Panel 3 of 7) Oil and Gas Fields By 2001 Liquids Reserve Class



The mapped oil and gas field boundary outlines were created by the Reserves and Production Division, Office of Oil and Gas, Energy Information Administration pursuant to studies required by Section 504 of the Energy Policy and Conservation Act Amendments of 2000 (PL 106-460). The boundaries are not informed by subsurface structural information. The data and methods used in their creation are detailed in a report, "Scientific Inventory of Onshore Federal Lands' Oil and Gas Resources and Reserves and the Economic Nature of Reservoirs to Their Development", prepared by the US Department of Interior, Agriculture and Energy.

Map created September 2005; projection is UTM-16, NAD-27.

Authors: Sam Lamsnick (1), Lucy Luo (1), Gary Long (2), David Muehlhouse (2), Jack Perin (1), Steve Jackson (1) and Robert King (2)

(1) E. Inc. (2) Energy Information Administration