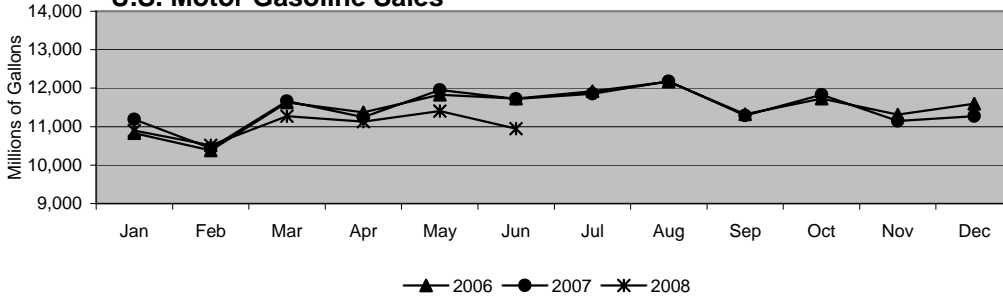


Prime Supplier Report

June 2008

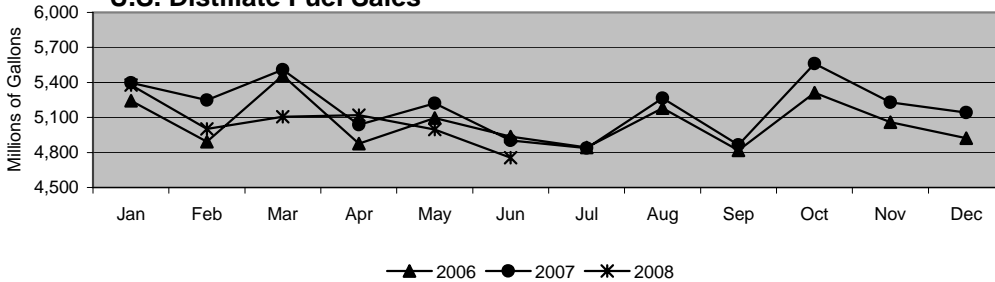
U.S. Motor Gasoline Sales



Adjusted Growth Rates*

May '08 to Jun '08: -0.8%
 Jun '07 to Jun '08: -6.6%
 YTD '07 to YTD '08: -3.5%

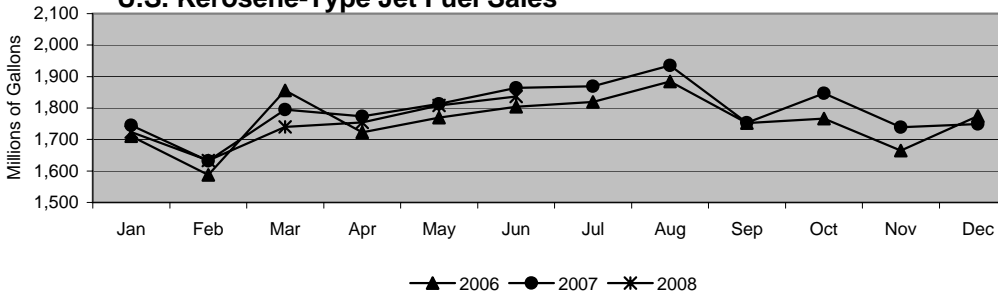
U.S. Distillate Fuel Sales



Adjusted Growth Rates*

May '08 to Jun '08: -1.7%
 Jun '07 to Jun '08: -3.0%
 YTD '07 to YTD '08: -3.6%

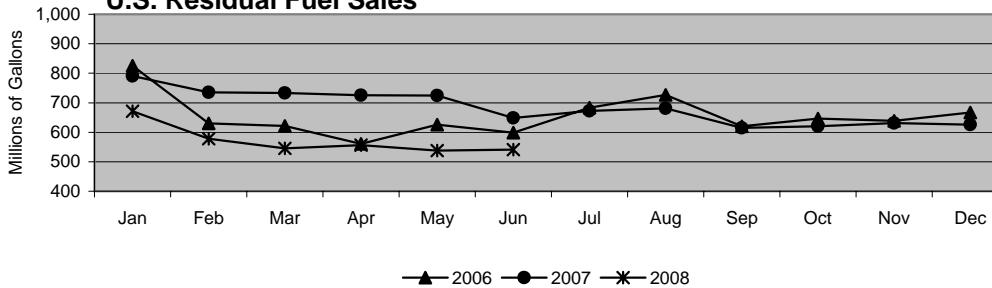
U.S. Kerosene-Type Jet Fuel Sales



Adjusted Growth Rates*

May '08 to Jun '08: +5.0%
 Jun '07 to Jun '08: -1.4%
 YTD '07 to YTD '08: -1.7%

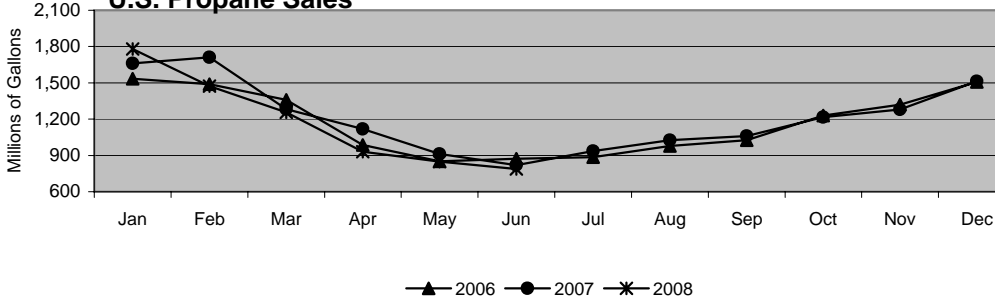
U.S. Residual Fuel Sales



Adjusted Growth Rates*

May '08 to Jun '08: +3.9%
 Jun '07 to Jun '08: -16.6%
 YTD '07 to YTD '08: -21.7%

U.S. Propane Sales

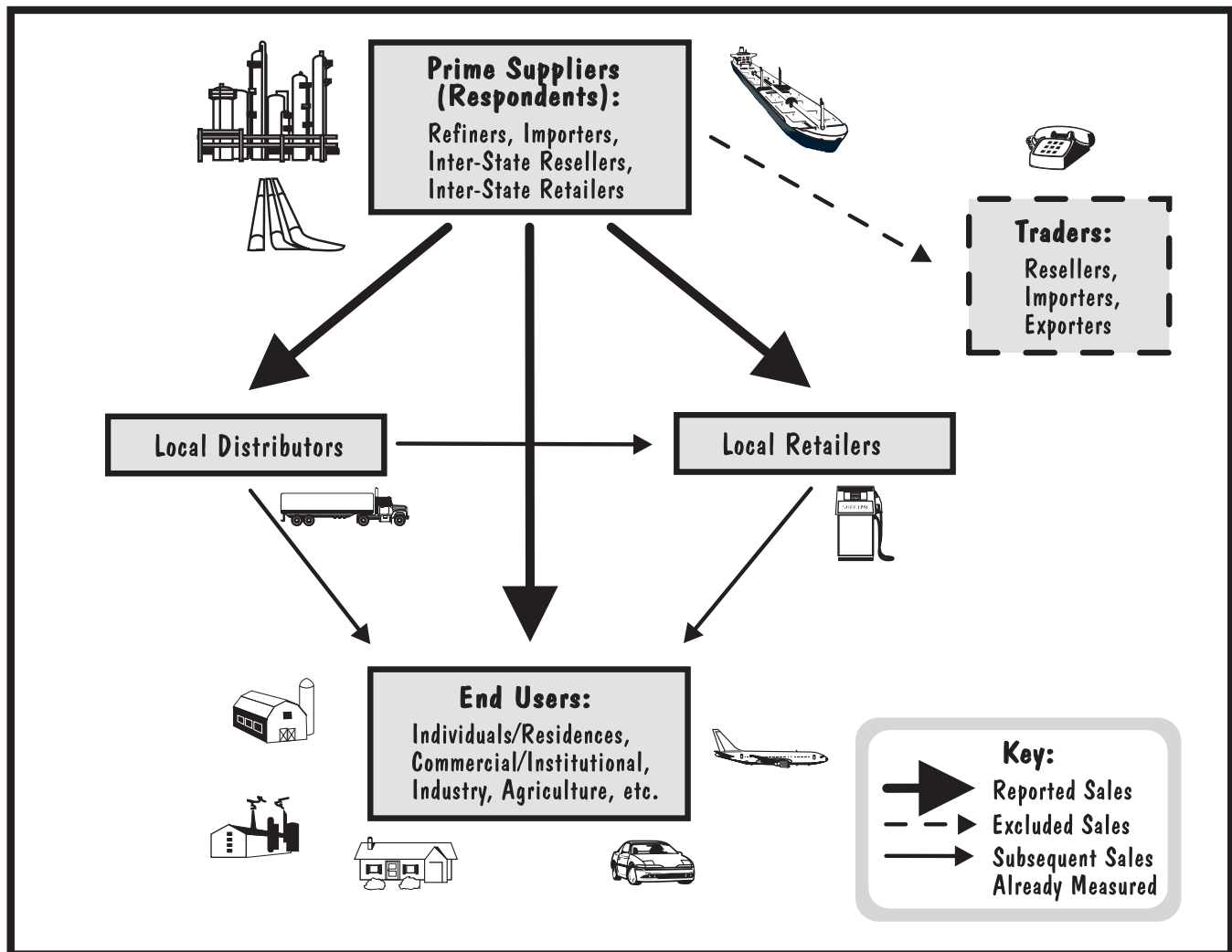


Adjusted Growth Rates*

May '08 to Jun '08: -4.2%
 Jun '07 to Jun '08: -3.9%
 YTD '07 to YTD '08: -6.3%

* Calculated on a per day basis.

Measurement of Petroleum Product Sales Volumes on the EIA-782C



Data for the Prime Supplier Report are collected on Form EIA-782C, "Monthly Report of Prime Supplier Sales of Petroleum Products Sold for Local Consumption." These data measure primary petroleum product deliveries into the States where they are locally marketed and consumed.

The EIA-782C respondent frame is comprised of approximately 185 prime suppliers representing producers, importers, and inter-State resellers and retailers. Each month, respondents report their aggregated sales volumes (combined wholesale and retail) made during the reference month to local distributors, local retailers, and end users in each State where the product was delivered. To avoid double-counting volumes, respondents are instructed to exclude sales to other prime suppliers and traders (see figure above).

The design of the EIA-782C makes possible accurate measurement of sales volumes for consumption at the U.S. and regional levels, as well as for most States. However, because the respondent frame is limited to prime suppliers, the survey cannot track subsequent product movement by local distributors, retailers, and end users (DRE's). This may result in some product volume reported in one State, but actually consumed in a different State (e.g., local distributors who truck product from New Jersey to New York, or airline trading divisions shipping product from State to State via pipeline.) Furthermore, to the extent that DRE's import product (e.g., utilities importing residual fuel), the survey may underestimate actual consumption in those affected States and products.

For further information pertaining to the "Prime Supplier Report" please contact Tammy Heppner at (202) 586-4748. To request data, both current and historical, please contact the National Energy Information Center at (202) 586-8800.

Prime Supplier Sales Volumes of Petroleum Products by Grade, PAD District, and State

(Thousand Gallons)

Geographic Area Products	January 2008	February 2008	March 2008	April 2008	May 2008	June 2008	Cumulative Year To Date 2007	Cumulative Year To Date 2008	Adjusted Year To Date % Change ¹
United States									
Motor Gasoline	10,895,188	10,511,920	11,271,007	11,130,866	11,406,473	10,949,296	68,205,307	66,164,750	-3.5
Regular	9,324,907	8,982,588	9,711,700	9,619,758	9,899,908	9,545,417	58,057,873	57,084,278	-2.2
Conventional	6,146,574	5,958,704	6,451,011	6,407,136	6,607,785	6,337,351	39,048,797	37,908,561	-3.5
Reformulated	3,178,333	3,023,884	3,260,689	3,212,622	3,292,123	3,208,066	19,009,076	19,175,717	0.3
Midgrade	606,466	595,827	599,077	578,959	583,483	548,518	3,668,312	3,512,330	-4.8
Conventional	447,846	441,661	442,664	430,230	434,845	411,617	2,567,799	2,608,863	1.0
Reformulated	158,620	154,166	156,413	148,729	148,638	136,901	1,100,513	903,467	-18.4
Premium	963,815	933,505	960,230	932,149	923,082	855,361	6,479,122	5,568,142	-14.5
Conventional	505,863	487,353	499,581	490,154	490,147	455,142	3,538,887	2,928,240	-17.7
Reformulated	457,952	446,152	460,649	441,995	432,935	400,219	2,940,235	2,639,902	-10.7
Total Distillate	5,376,990	5,001,507	5,106,068	5,120,337	4,997,413	4,755,924	31,315,656	30,358,239	-3.6
No. 1 Distillate	84,450	69,291	37,262	21,172	19,687	21,247	265,265	253,109	-5.1
No. 2 Distillate	5,273,578	4,913,327	5,052,788	5,088,634	4,970,343	4,725,139	30,942,886	30,023,809	-3.5
No. 2 Fuel Oil	828,130	761,840	626,403	394,619	255,113	210,716	3,982,086	3,076,821	-23.2
No. 2 Diesel Fuel	NA	NA	NA	NA	NA	NA	NA	NA	NA
Ultra Low Sulfur	3,396,057	3,209,063	3,446,861	3,686,881	3,715,700	3,546,053	18,963,576	21,000,615	10.1
Low Sulfur	923,758	837,022	878,051	893,355	918,122	891,893	4,759,245	5,342,201	11.6
High Sulfur	125,633	105,402	101,473	113,779	81,408	76,477	3,237,979	604,172	-81.4
No. 4 Fuel	18,962	18,889	16,018	10,531	7,383	9,538	107,505	81,321	-24.8
Aviation Gasoline	11,847	12,833	14,065	15,936	18,222	19,424	102,524	92,327	-10.4
Kerosene-Type Jet Fuel	1,723,970	1,633,528	1,739,672	1,754,508	1,807,940	1,836,843	10,622,413	10,496,461	-1.7
Kerosene	65,550	54,176	27,760	7,984	6,488	4,918	226,805	166,876	-26.8
Propane	1,778,614	1,472,917	1,254,819	929,494	848,748	786,754	7,504,805	7,071,346	-6.3
Residual Fuel Oil	671,709	578,246	545,163	556,075	538,147	540,988	4,357,481	3,430,328	-21.7
Sulfur Content <= 1 %	211,648	188,220	159,499	140,328	104,919	137,468	1,502,760	942,082	-37.7
Sulfur Content > 1 %	460,061	390,026	385,664	415,747	433,228	403,520	2,854,721	2,488,246	-13.3
PAD District I									
Motor Gasoline	3,889,656	3,743,617	4,025,869	3,929,454	4,031,707	3,899,297	24,513,175	23,519,600	-4.6
Regular	3,360,532	3,240,478	3,499,476	3,422,003	3,529,801	3,437,380	20,839,897	20,489,670	-2.2
Conventional	2,040,735	1,994,145	2,147,626	2,095,260	2,181,715	2,111,720	13,156,247	12,571,201	-5.0
Reformulated	1,319,797	1,246,333	1,351,850	1,326,743	1,348,086	1,325,660	7,683,650	7,918,469	2.5
Midgrade	140,700	135,465	141,555	135,261	135,751	125,517	1,050,824	814,249	-22.9
Conventional	83,212	80,963	83,819	78,471	78,854	71,195	634,484	476,514	-25.3
Reformulated	57,488	54,502	57,736	56,790	56,897	54,322	416,340	337,735	-19.3
Premium	388,424	367,674	384,838	372,190	366,155	336,400	2,622,454	2,215,681	-16.0
Conventional	200,003	190,697	196,303	188,012	186,803	168,615	1,446,996	1,130,433	-22.3
Reformulated	188,421	176,977	188,535	184,178	179,352	167,785	1,175,458	1,085,248	-8.2
Total Distillate	1,976,916	1,805,538	1,715,403	W	W	W	W	W	W
No. 1 Distillate	20,029	12,873	10,610	W	W	W	W	W	NA
No. 2 Distillate	1,940,340	1,775,896	1,690,985	1,499,559	1,390,674	1,298,429	10,791,540	9,595,883	-11.6
No. 2 Fuel Oil	759,687	706,415	574,202	346,687	203,808	157,911	3,587,970	2,748,710	-23.8
No. 2 Diesel Fuel	NA	NA	NA	NA	NA	NA	NA	NA	NA
Ultra Low Sulfur	839,960	782,841	823,901	860,714	894,707	863,652	4,675,558	5,065,775	7.8
Low Sulfur	320,101	272,955	W	W	W	263,159	1,549,934	W	NA
High Sulfur	20,592	13,685	W	W	W	13,707	978,078	W	NA
No. 4 Fuel	16,547	16,769	13,808	8,021	W	7,119	W	W	NA
Aviation Gasoline	4,156	3,730	4,352	4,712	4,699	4,652	31,271	26,301	-16.4
Kerosene-Type Jet Fuel	474,955	446,765	473,996	515,643	516,594	516,059	2,692,890	2,944,012	8.7
Kerosene	52,040	44,798	23,228	W	5,267	W	W	W	NA
Propane	385,437	322,935	273,397	180,822	138,813	114,945	1,599,653	1,416,349	-11.9
Residual Fuel Oil	313,646	237,337	227,293	211,934	208,835	217,714	2,208,165	1,416,759	-36.2
Sulfur Content <= 1 %	140,427	116,584	85,252	64,780	40,843	49,128	1,015,755	497,014	-51.3
Sulfur Content > 1 %	173,219	120,753	142,041	147,154	167,992	168,586	1,192,410	919,745	-23.3

See footnotes at end of table.

Prime Supplier Sales Volumes of Petroleum Products by Grade, PAD District, and State

(Thousand Gallons) — Continued

Geographic Area Products	January 2008	February 2008	March 2008	April 2008	May 2008	June 2008	Cumulative Year To Date 2007	Cumulative Year To Date 2008	Adjusted Year To Date % Change ¹
Subdistrict IA									
Motor Gasoline	516,781	489,227	521,195	509,790	537,109	530,520	3,206,568	3,104,622	-3.7
Regular	460,826	436,427	466,083	455,431	480,922	475,729	2,822,219	2,775,418	-2.2
Conventional	83,587	78,014	80,359	76,766	85,994	88,242	553,384	492,962	-11.4
Reformulated	377,239	358,413	385,724	378,665	394,928	387,487	2,268,835	2,282,456	0.0
Midgrade	14,583	13,721	14,439	13,806	14,609	14,166	116,375	85,324	-27.1
Conventional	1,811	1,687	1,655	1,546	1,755	1,810	13,208	10,264	-22.7
Reformulated	12,772	12,034	12,784	12,260	12,854	12,356	103,167	75,060	-27.6
Premium	41,372	39,079	40,673	40,553	41,578	40,625	267,974	243,880	-9.5
Conventional	4,122	3,923	3,518	3,283	4,525	4,912	31,713	24,283	-23.8
Reformulated	37,250	35,156	37,155	37,270	37,053	35,713	236,261	219,597	-7.6
Total Distillate	442,159	W	350,434	W	189,516	W	W	W	W
No. 1 Distillate	2,639	W	1,863	W	1,128	W	W	W	NA
No. 2 Distillate	436,856	394,024	345,572	248,859	187,534	153,731	2,020,707	1,766,576	-13.1
No. 2 Fuel Oil	333,343	300,787	251,232	149,836	82,988	W	1,352,680	W	NA
No. 2 Diesel Fuel	NA	NA	NA	NA	NA	NA	NA	NA	NA
Ultra Low Sulfur	91,172	82,038	84,685	89,914	94,554	95,351	514,427	537,714	4.0
Low Sulfur	W	W	9,655	9,109	9,992	W	56,236	W	NA
High Sulfur	W	W	-	-	-	-	97,364	W	NA
No. 4 Fuel	2,664	W	2,999	W	854	W	W	W	NA
Aviation Gasoline	526	215	380	512	576	566	4,375	2,775	-36.9
Kerosene-Type Jet Fuel	37,577	34,749	36,877	49,824	46,006	44,491	183,743	249,524	35.1
Kerosene	10,571	11,617	8,265	2,782	2,041	1,524	W	36,800	NA
Propane	67,462	61,488	56,451	34,249	25,646	19,294	305,166	264,590	-13.8
Residual Fuel Oil	44,890	33,995	32,945	16,507	12,246	11,339	263,948	151,922	-42.8
Sulfur Content <= 1 %	27,940	21,252	22,857	6,928	4,568	3,322	W	86,867	NA
Sulfur Content > 1 %	16,950	12,743	10,088	9,579	7,678	8,017	W	65,055	NA
Connecticut									
Motor Gasoline	127,519	117,794	127,390	126,548	131,516	126,698	791,525	757,465	-4.8
Regular	111,110	102,730	111,072	110,240	115,431	111,423	680,191	662,006	-3.2
Conventional	-	-	-	-	-	-	-	-	-
Reformulated	111,110	102,730	111,072	110,240	115,431	111,423	680,191	662,006	-3.2
Midgrade	3,137	2,856	3,173	3,006	3,083	2,868	22,725	18,123	-20.7
Conventional	-	-	-	-	-	-	-	-	-
Reformulated	3,137	2,856	3,173	3,006	3,083	2,868	22,725	18,123	-20.7
Premium	13,272	12,208	13,145	13,302	13,002	12,407	88,609	77,336	-13.2
Conventional	-	-	-	W	-	-	-	W	NA
Reformulated	13,272	12,208	13,145	W	13,002	12,407	88,609	W	NA
Total Distillate	W	W	W	W	W	W	W	W	W
No. 1 Distillate	W	W	W	W	W	W	W	W	NA
No. 2 Distillate	108,942	100,683	87,660	61,738	43,701	36,336	448,863	439,060	-2.7
No. 2 Fuel Oil	86,238	79,097	65,092	36,605	18,994	12,232	301,791	298,258	-1.7
No. 2 Diesel Fuel	NA	NA	NA	NA	NA	NA	NA	NA	NA
Ultra Low Sulfur	19,319	19,064	20,883	W	W	W	122,979	W	NA
Low Sulfur	W	W	1,685	W	W	W	W	W	NA
High Sulfur	W	W	-	-	-	-	W	W	NA
No. 4 Fuel	W	W	W	W	W	W	W	W	NA
Aviation Gasoline	W	W	W	W	W	68	W	W	NA
Kerosene-Type Jet Fuel	6,858	5,947	5,915	6,495	5,615	4,706	36,871	35,536	-4.2
Kerosene	W	628	284	104	63	31	W	W	NA
Propane	5,885	4,971	4,595	3,087	2,794	2,124	30,782	23,456	-24.2
Residual Fuel Oil	7,675	1,819	1,004	341	W	146	W	W	NA
Sulfur Content <= 1 %	W	W	W	W	W	W	W	W	NA
Sulfur Content > 1 %	W	W	W	W	W	W	W	W	NA

See footnotes at end of table.

Prime Supplier Sales Volumes of Petroleum Products by Grade, PAD District, and State

(Thousand Gallons) — Continued

Geographic Area Products	January 2008	February 2008	March 2008	April 2008	May 2008	June 2008	Cumulative Year To Date 2007	Cumulative Year To Date 2008	Adjusted Year To Date % Change ¹
Maine									
Motor Gasoline	54,793	51,143	53,170	50,497	56,401	58,255	365,437	324,259	-11.8
Regular	51,655	48,088	50,338	47,864	52,855	54,456	341,008	305,256	-11.0
Conventional	51,655	48,088	50,338	47,864	52,855	54,456	341,008	305,256	-11.0
Reformulated	-	-	-	-	-	-	-	-	-
Midgrade	1,012	974	956	842	964	1,011	7,506	5,759	-23.7
Conventional	1,012	974	956	842	964	1,011	7,506	5,759	-23.7
Reformulated	-	-	-	-	-	-	-	-	-
Premium	2,126	2,081	1,876	1,791	2,582	2,788	16,923	13,244	-22.2
Conventional	2,126	2,081	1,876	1,791	2,582	2,788	16,923	13,244	-22.2
Reformulated	-	-	-	-	-	-	-	-	-
Total Distillate	W	W	W	W	W	W	W	W	W
No. 1 Distillate	W	W	W	W	W	W	W	W	NA
No. 2 Distillate	80,179	71,437	67,025	44,759	36,806	29,696	400,336	329,902	-18.0
No. 2 Fuel Oil	60,118	53,355	49,112	29,164	19,128	11,621	269,648	222,498	-17.9
No. 2 Diesel Fuel	NA	NA	NA	NA	NA	NA	NA	NA	NA
Ultra Low Sulfur	19,177	17,325	W	W	W	W	112,461	W	NA
Low Sulfur	884	757	W	W	W	W	W	W	NA
High Sulfur	-	-	-	-	-	-	W	-	NA
No. 4 Fuel	W	W	W	W	W	W	W	W	NA
Aviation Gasoline	W	W	W	W	W	W	W	W	NA
Kerosene-Type Jet Fuel	5,784	4,776	6,633	4,944	4,144	3,899	29,338	30,180	2.3
Kerosene	6,920	6,155	4,277	1,556	959	700	27,068	20,567	-24.4
Propane	11,076	10,653	10,130	6,645	4,536	3,846	47,088	46,886	-1.0
Residual Fuel Oil	15,107	10,925	9,914	8,955	6,591	6,717	76,912	58,209	-24.7
Sulfur Content <= 1 %	W	W	W	W	W	W	W	W	NA
Sulfur Content > 1 %	W	W	W	W	W	W	W	W	NA
Massachusetts									
Motor Gasoline	221,642	213,462	228,512	222,337	231,043	229,926	1,372,638	1,346,922	-2.4
Regular	195,732	188,687	202,539	196,743	205,024	204,621	1,195,888	1,193,346	-0.8
Conventional	-	-	-	-	-	-	-	-	-
Reformulated	195,732	188,687	202,539	196,743	205,024	204,621	1,195,888	1,193,346	-0.8
Midgrade	7,368	6,986	7,391	7,049	7,495	7,241	61,028	43,530	-29.1
Conventional	-	-	-	-	-	-	-	-	-
Reformulated	7,368	6,986	7,391	7,049	7,495	7,241	61,028	43,530	-29.1
Premium	18,542	17,789	18,582	18,545	18,524	18,064	115,722	110,046	-5.4
Conventional	-	-	-	-	-	-	-	-	-
Reformulated	18,542	17,789	18,582	18,545	18,524	18,064	115,722	110,046	-5.4
Total Distillate	W	W	W	W	W	W	W	W	W
No. 1 Distillate	W	W	W	W	W	W	W	W	NA
No. 2 Distillate	123,794	113,106	98,743	75,731	54,872	45,952	621,608	512,198	-18.1
No. 2 Fuel Oil	90,228	85,528	69,316	43,432	20,415	11,921	401,815	320,840	-20.6
No. 2 Diesel Fuel	NA	NA	NA	NA	NA	NA	NA	NA	NA
Ultra Low Sulfur	28,324	22,664	24,607	27,616	29,550	30,491	149,655	163,252	8.5
Low Sulfur	5,242	4,914	4,820	4,683	4,907	3,540	W	28,106	NA
High Sulfur	-	-	-	-	-	-	W	-	NA
No. 4 Fuel	824	1,770	1,394	734	392	258	W	5,372	NA
Aviation Gasoline	196	127	144	208	178	229	1,141	1,082	-5.7
Kerosene-Type Jet Fuel	22,729	21,641	22,276	36,368	33,965	33,185	103,396	170,164	63.7
Kerosene	W	W	W	W	W	W	W	W	NA
Propane	5,946	4,759	4,643	3,289	2,722	2,064	31,027	23,423	-24.9
Residual Fuel Oil	16,394	16,666	17,357	4,068	2,875	2,146	111,579	59,506	-47.0
Sulfur Content <= 1 %	15,701	16,032	16,728	W	W	W	W	W	NA
Sulfur Content > 1 %	693	634	629	W	W	W	W	W	NA

See footnotes at end of table.

Prime Supplier Sales Volumes of Petroleum Products by Grade, PAD District, and State

(Thousand Gallons) — Continued

Geographic Area Products	January 2008	February 2008	March 2008	April 2008	May 2008	June 2008	Cumulative Year To Date 2007	Cumulative Year To Date 2008	Adjusted Year To Date % Change ¹
New Hampshire									
Motor Gasoline	48,600	45,815	47,255	46,570	48,454	48,794	293,893	285,488	-3.4
Regular	44,433	41,826	43,374	42,743	44,291	44,507	266,100	261,174	-2.4
Conventional	9,062	8,456	8,257	8,067	9,718	10,648	69,745	54,208	-22.7
Reformulated	35,371	33,370	35,117	34,676	34,573	33,859	196,355	206,966	4.8
Midgrade	1,339	1,281	1,264	1,259	1,319	1,350	8,810	7,812	-11.8
Conventional	280	268	251	270	313	351	W	1,733	NA
Reformulated	1,059	1,013	1,013	989	1,006	999	6,796	6,079	-11.0
Premium	2,828	2,708	2,617	2,568	2,844	2,937	18,983	16,502	-13.5
Conventional	527	492	440	W	556	746	4,800	W	NA
Reformulated	2,301	2,216	2,177	W	2,288	2,191	14,183	W	NA
Total Distillate	W	W	W	W	W	W	W	W	W
No. 1 Distillate	W	W	W	W	W	W	W	W	NA
No. 2 Distillate	52,164	44,143	37,564	26,593	20,724	15,963	223,745	197,151	-12.4
No. 2 Fuel Oil	40,305	32,516	27,474	15,911	9,758	5,461	139,364	131,425	-6.2
No. 2 Diesel Fuel	NA	NA	NA	NA	NA	NA	NA	NA	NA
Ultra Low Sulfur	11,012	10,870	9,648	10,254	10,346	9,980	63,011	62,110	-2.0
Low Sulfur	847	757	442	428	620	522	W	3,616	NA
High Sulfur	—	—	—	—	—	—	W	—	NA
No. 4 Fuel	W	W	W	W	W	W	W	W	NA
Aviation Gasoline	224	39	W	189	W	192	W	W	NA
Kerosene-Type Jet Fuel	474	W	425	452	428	W	2,389	W	NA
Kerosene	1,756	1,566	1,099	481	237	83	W	5,222	NA
Propane	24,706	21,339	22,253	11,699	8,592	5,891	106,131	94,480	-11.5
Residual Fuel Oil	3,531	2,960	3,186	2,166	1,834	1,505	19,270	15,182	-21.6
Sulfur Content <= 1 %	W	W	W	W	W	W	W	W	NA
Sulfur Content > 1 %	W	W	W	W	W	W	W	W	NA
Rhode Island									
Motor Gasoline	39,369	37,748	41,454	41,474	44,409	41,883	226,766	246,337	8.0
Regular	35,026	33,626	36,996	37,006	39,900	37,584	196,401	220,138	11.5
Conventional	—	—	—	—	—	—	—	—	—
Reformulated	35,026	33,626	36,996	37,006	39,900	37,584	196,401	220,138	11.5
Midgrade	1,208	1,179	1,207	1,216	1,270	1,248	12,618	7,328	-42.2
Conventional	—	—	—	—	—	—	—	—	—
Reformulated	1,208	1,179	1,207	1,216	1,270	1,248	12,618	7,328	-42.2
Premium	3,135	2,943	3,251	3,252	3,239	3,051	17,747	18,871	5.7
Conventional	—	—	—	—	—	—	—	—	—
Reformulated	3,135	2,943	3,251	3,252	3,239	3,051	17,747	18,871	5.7
Total Distillate	W	W	W	W	W	W	W	W	W
No. 1 Distillate	W	W	W	W	W	W	W	W	NA
No. 2 Distillate	49,939	44,668	36,361	26,015	19,372	16,307	222,000	192,662	-13.7
No. 2 Fuel Oil	40,666	36,320	27,393	16,507	9,391	5,608	168,018	135,885	-19.6
No. 2 Diesel Fuel	NA	NA	NA	NA	NA	NA	NA	NA	NA
Ultra Low Sulfur	8,421	7,162	7,833	8,310	W	9,524	42,194	W	NA
Low Sulfur	852	1,186	1,135	1,198	W	1,175	W	W	NA
High Sulfur	—	—	—	—	—	—	W	—	NA
No. 4 Fuel	362	319	530	W	W	W	1,167	W	NA
Aviation Gasoline	—	—	—	—	—	—	W	—	NA
Kerosene-Type Jet Fuel	W	W	W	W	W	W	5,281	W	NA
Kerosene	W	W	W	W	W	W	W	W	NA
Propane	7,486	8,466	3,510	2,851	2,759	2,604	36,008	27,676	-23.6
Residual Fuel Oil	1,371	876	737	382	W	335	13,154	W	NA
Sulfur Content <= 1 %	1,371	876	737	382	W	335	13,154	W	NA
Sulfur Content > 1 %	—	—	—	—	—	—	—	—	—

See footnotes at end of table.

Prime Supplier Sales Volumes of Petroleum Products by Grade, PAD District, and State

(Thousand Gallons) — Continued

Geographic Area Products	January 2008	February 2008	March 2008	April 2008	May 2008	June 2008	Cumulative Year To Date 2007	Cumulative Year To Date 2008	Adjusted Year To Date % Change ¹
Vermont									
Motor Gasoline	24,858	23,265	23,414	22,364	25,286	24,964	156,309	144,151	-8.3
Regular	22,870	21,470	21,764	20,835	23,421	23,138	142,631	133,498	-6.9
Conventional	22,870	21,470	21,764	20,835	23,421	23,138	142,631	133,498	-6.9
Reformulated	-	-	-	-	-	-	-	-	-
Midgrade	519	445	448	434	478	448	3,688	2,772	-25.3
Conventional	519	445	448	434	478	448	3,688	2,772	-25.3
Reformulated	-	-	-	-	-	-	-	-	-
Premium	1,469	1,350	1,202	1,095	1,387	1,378	9,990	7,881	-21.5
Conventional	1,469	1,350	1,202	1,095	1,387	1,378	9,990	7,881	-21.5
Reformulated	-	-	-	-	-	-	-	-	-
Total Distillate	22,380	20,546	W	W	W	W	W	W	W
No. 1 Distillate	256	275	W	W	W	W	W	W	NA
No. 2 Distillate	21,838	19,987	18,219	14,023	12,059	9,477	104,155	95,603	-8.7
No. 2 Fuel Oil	15,788	13,971	12,845	8,217	5,302	W	72,044	W	NA
No. 2 Diesel Fuel	NA	NA	NA	NA	NA	NA	NA	NA	NA
Ultra Low Sulfur	4,919	4,953	W	4,757	5,581	5,251	24,127	W	NA
Low Sulfur	1,131	1,063	W	1,049	1,176	W	W	W	NA
High Sulfur	-	-	-	-	-	-	W	-	NA
No. 4 Fuel	286	284	W	W	W	W	W	W	NA
Aviation Gasoline	W	W	W	W	W	W	W	W	NA
Kerosene-Type Jet Fuel	W	778	W	W	W	791	6,468	W	NA
Kerosene	1,472	1,276	993	429	145	66	6,735	4,381	-35.3
Propane	12,363	11,300	11,320	6,678	4,243	2,765	54,130	48,669	-10.6
Residual Fuel Oil	812	749	747	595	542	490	W	3,935	NA
Sulfur Content <= 1 %	W	W	W	W	W	W	W	W	NA
Sulfur Content > 1 %	W	W	W	W	W	W	W	W	NA
Subdistrict IB									
Motor Gasoline	1,413,897	1,335,711	1,441,983	1,441,961	1,481,924	1,447,953	8,922,883	8,563,429	-4.6
Regular	1,216,606	1,154,739	1,248,068	1,247,647	1,288,241	1,265,159	7,597,575	7,420,460	-2.9
Conventional	427,577	411,116	439,409	454,112	489,256	478,816	3,017,404	2,700,286	-11.0
Reformulated	789,029	743,623	808,659	793,535	798,985	786,343	4,580,171	4,720,174	2.5
Midgrade	43,874	41,203	44,284	43,718	44,686	42,863	316,871	260,628	-18.2
Conventional	8,421	7,791	8,499	8,396	9,316	8,876	65,274	51,299	-21.8
Reformulated	35,453	33,412	35,785	35,322	35,370	33,987	251,597	209,329	-17.3
Premium	153,417	139,769	149,631	150,596	148,997	139,931	1,008,437	882,341	-13.0
Conventional	26,903	21,496	22,321	27,342	28,995	29,068	216,876	156,125	-28.4
Reformulated	126,514	118,273	127,310	123,254	120,002	110,863	791,561	726,216	-8.8
Total Distillate	W	753,611	W	W	W	W	W	W	W
No. 1 Distillate	W	10,036	W	W	W	W	W	W	NA
No. 2 Distillate	793,644	730,358	669,078	561,818	513,964	488,168	4,372,393	3,757,030	-14.5
No. 2 Fuel Oil	388,075	371,891	291,483	169,470	94,604	84,196	1,786,696	1,399,719	-22.1
No. 2 Diesel Fuel	NA	NA	NA	NA	NA	NA	NA	NA	NA
Ultra Low Sulfur	304,743	282,047	295,119	309,232	331,874	320,009	1,746,774	1,843,024	4.9
Low Sulfur	94,081	75,026	81,355	82,289	86,738	W	470,202	W	NA
High Sulfur	6,745	1,394	1,121	827	748	W	368,721	W	NA
No. 4 Fuel	W	13,217	W	6,420	4,081	6,626	W	W	NA
Aviation Gasoline	930	653	764	847	1,263	1,053	6,140	5,510	-10.8
Kerosene-Type Jet Fuel	226,139	208,685	234,851	233,075	249,300	245,038	1,312,405	1,397,088	5.9
Kerosene	25,270	25,164	11,637	W	W	W	W	W	NA
Propane	135,721	122,972	111,269	78,979	60,642	47,991	637,181	557,574	-13.0
Residual Fuel Oil	215,813	168,479	159,179	126,828	128,254	141,014	1,386,005	939,567	-32.6
Sulfur Content <= 1 %	104,836	85,212	54,940	43,762	29,455	43,010	758,557	361,215	-52.6
Sulfur Content > 1 %	110,977	83,267	104,239	83,066	98,799	98,004	627,448	578,352	-8.3

See footnotes at end of table.

Prime Supplier Sales Volumes of Petroleum Products by Grade, PAD District, and State

(Thousand Gallons) — Continued

Geographic Area Products	January 2008	February 2008	March 2008	April 2008	May 2008	June 2008	Cumulative Year To Date 2007	Cumulative Year To Date 2008	Adjusted Year To Date % Change ¹
Delaware									
Motor Gasoline	34,440	31,694	34,117	34,640	35,068	36,441	212,305	206,400	-3.3
Regular	30,894	28,545	30,716	31,128	31,708	33,120	186,510	186,111	-0.8
Conventional	—	—	—	—	—	—	—	—	—
Reformulated	30,894	28,545	30,716	31,128	31,708	33,120	186,510	186,111	-0.8
Midgrade	886	757	883	886	833	893	7,579	5,138	-32.6
Conventional	—	—	—	—	—	—	—	—	—
Reformulated	886	757	883	886	833	893	7,579	5,138	-32.6
Premium	2,660	2,392	2,518	2,626	2,527	2,428	18,216	15,151	-17.3
Conventional	—	—	—	—	—	—	—	—	—
Reformulated	2,660	2,392	2,518	2,626	2,527	2,428	18,216	15,151	-17.3
Total Distillate	W	W	W	W	W	W	W	W	W
No. 1 Distillate	—	—	—	—	—	—	—	—	—
No. 2 Distillate	12,144	9,497	8,914	8,499	7,584	W	W	W	NA
No. 2 Fuel Oil	W	W	W	W	W	W	W	W	NA
No. 2 Diesel Fuel	NA	NA	NA	NA	NA	NA	NA	NA	NA
Ultra Low Sulfur	6,022	4,846	W	6,286	W	6,082	38,052	W	NA
Low Sulfur	679	564	598	752	730	W	W	W	NA
High Sulfur	W	W	W	W	—	—	W	W	NA
No. 4 Fuel	W	W	W	W	W	W	W	W	NA
Aviation Gasoline	W	W	W	W	W	W	W	W	NA
Kerosene-Type Jet Fuel	378	294	408	363	428	453	1,977	2,324	16.9
Kerosene	W	W	W	W	W	W	W	W	NA
Propane	7,683	5,867	5,074	4,784	3,649	2,820	41,403	29,877	-28.2
Residual Fuel Oil	13,808	4,359	11,134	3,770	2,869	6,991	41,167	42,931	3.7
Sulfur Content <= 1 %	W	W	W	W	W	W	W	W	NA
Sulfur Content > 1 %	W	W	W	W	W	W	W	W	NA
District of Columbia									
Motor Gasoline	7,100	6,977	6,889	6,950	7,076	6,694	45,552	41,686	-9.0
Regular	4,973	4,825	4,780	4,847	5,116	4,956	30,524	29,497	-3.9
Conventional	—	—	—	—	—	—	—	—	—
Reformulated	4,973	4,825	4,780	4,847	5,116	4,956	30,524	29,497	-3.9
Midgrade	641	650	671	674	644	537	4,814	3,817	-21.1
Conventional	—	—	—	—	—	—	—	—	—
Reformulated	641	650	671	674	644	537	4,814	3,817	-21.1
Premium	1,486	1,502	1,438	1,429	1,316	1,201	10,214	8,372	-18.5
Conventional	—	—	—	—	—	—	—	—	—
Reformulated	1,486	1,502	1,438	1,429	1,316	1,201	10,214	8,372	-18.5
Total Distillate	W	W	W	W	W	W	W	W	W
No. 1 Distillate	—	—	—	—	—	—	—	—	—
No. 2 Distillate	2,286	1,947	W	1,195	851	W	W	W	NA
No. 2 Fuel Oil	W	W	W	W	W	W	W	W	NA
No. 2 Diesel Fuel	NA	NA	NA	NA	NA	NA	NA	NA	NA
Ultra Low Sulfur	304	488	W	W	W	462	2,697	W	NA
Low Sulfur	W	W	594	587	551	W	W	W	NA
High Sulfur	—	—	—	—	—	—	W	—	NA
No. 4 Fuel	W	W	—	—	—	W	W	W	NA
Aviation Gasoline	—	—	—	—	—	—	—	—	—
Kerosene-Type Jet Fuel	—	—	—	—	—	—	—	—	—
Kerosene	W	W	W	—	—	—	W	W	NA
Propane	—	—	—	—	—	—	—	—	—
Residual Fuel Oil	—	—	—	—	—	—	—	—	—
Sulfur Content <= 1 %	—	—	—	—	—	—	—	—	—
Sulfur Content > 1 %	—	—	—	—	—	—	—	—	—

See footnotes at end of table.

Prime Supplier Sales Volumes of Petroleum Products by Grade, PAD District, and State

(Thousand Gallons) — Continued

Geographic Area Products	January 2008	February 2008	March 2008	April 2008	May 2008	June 2008	Cumulative Year To Date 2007	Cumulative Year To Date 2008	Adjusted Year To Date % Change ¹
Maryland									
Motor Gasoline	193,015	183,019	198,906	202,189	203,364	199,381	1,250,758	1,179,874	-6.2
Regular	159,212	151,215	166,034	169,281	170,979	168,983	1,019,191	985,704	-3.8
Conventional	7,791	7,000	10,019	14,268	18,868	18,243	127,304	76,189	-40.5
Reformulated	151,421	144,215	156,015	155,013	152,111	150,740	891,887	909,515	1.4
Midgrade	8,927	8,244	8,528	8,550	8,699	8,095	66,261	51,043	-23.4
Conventional	255	262	215	279	432	394	3,761	1,837	-51.4
Reformulated	8,672	7,982	8,313	8,271	8,267	7,701	62,500	49,206	-21.7
Premium	24,876	23,560	24,344	24,358	23,686	22,303	165,306	143,127	-13.9
Conventional	628	544	771	1,137	1,559	1,411	12,030	6,050	-50.0
Reformulated	24,248	23,016	23,573	23,221	22,127	20,892	153,276	137,077	-11.1
Total Distillate	W	W	W	W	W	W	W	W	W
No. 1 Distillate	-	-	-	-	-	-	W	-	NA
No. 2 Distillate	77,879	70,153	67,502	57,885	57,382	54,934	420,768	385,735	-8.8
No. 2 Fuel Oil	26,349	24,447	16,504	10,670	W	6,023	126,448	W	NA
No. 2 Diesel Fuel	NA	NA	NA	NA	NA	NA	NA	NA	NA
Ultra Low Sulfur	32,064	28,976	31,048	W	34,472	32,242	151,740	W	NA
Low Sulfur	17,943	W	W	12,663	W	W	91,642	W	NA
High Sulfur	1,523	W	W	W	W	W	50,938	W	NA
No. 4 Fuel	-	W	-	-	W	-	-	W	NA
Aviation Gasoline	W	W	W	W	W	W	W	W	NA
Kerosene-Type Jet Fuel	11,865	10,259	11,839	11,349	12,589	11,994	W	69,895	NA
Kerosene	1,679	W	569	188	W	143	W	W	NA
Propane	16,704	14,334	12,700	9,386	6,747	5,367	77,334	65,238	-16.1
Residual Fuel Oil	6,146	2,590	2,031	1,560	1,505	908	46,359	14,740	-68.4
Sulfur Content <= 1 %	3,685	W	W	W	W	W	W	W	NA
Sulfur Content > 1 %	2,461	W	W	W	W	W	W	W	NA
New Jersey									
Motor Gasoline	341,457	323,541	352,951	348,354	358,510	347,952	2,087,564	2,072,765	-1.3
Regular	288,984	274,076	299,107	295,005	305,061	299,900	1,760,243	1,762,133	-0.4
Conventional	-	-	-	-	-	-	-	-	-
Reformulated	288,984	274,076	299,107	295,005	305,061	299,900	1,760,243	1,762,133	-0.4
Midgrade	10,028	9,572	10,197	10,132	10,358	10,019	68,651	60,306	-12.6
Conventional	-	-	-	-	-	-	-	-	-
Reformulated	10,028	9,572	10,197	10,132	10,358	10,019	68,651	60,306	-12.6
Premium	42,445	39,893	43,647	43,217	43,091	38,033	258,670	250,326	-3.8
Conventional	-	-	-	-	-	-	-	-	-
Reformulated	42,445	39,893	43,647	43,217	43,091	38,033	258,670	250,326	-3.8
Total Distillate	W	W	W	W	W	W	W	W	W
No. 1 Distillate	W	W	W	-	-	-	W	W	NA
No. 2 Distillate	198,455	158,047	163,518	139,587	124,505	120,212	1,076,631	904,324	-16.5
No. 2 Fuel Oil	83,931	67,610	57,858	37,675	13,926	12,797	389,501	273,797	-30.1
No. 2 Diesel Fuel	NA	NA	NA	NA	NA	NA	NA	NA	NA
Ultra Low Sulfur	92,634	74,370	88,607	81,961	91,420	89,697	514,388	518,689	0.3
Low Sulfur	19,355	15,928	17,053	W	19,159	W	101,801	W	NA
High Sulfur	2,535	139	-	W	-	W	70,941	W	NA
No. 4 Fuel	W	W	W	W	W	W	W	W	NA
Aviation Gasoline	346	203	265	243	356	266	W	1,679	NA
Kerosene-Type Jet Fuel	107,499	96,879	111,173	114,365	123,159	116,195	655,331	669,270	1.6
Kerosene	3,338	3,971	1,464	W	W	W	W	W	NA
Propane	15,770	14,707	13,264	9,725	11,484	7,495	85,420	72,445	-15.7
Residual Fuel Oil	41,485	29,310	34,125	20,185	38,651	48,304	281,107	212,060	-25.0
Sulfur Content <= 1 %	19,239	9,729	5,637	6,860	10,019	14,535	W	66,019	NA
Sulfur Content > 1 %	22,246	19,581	28,488	13,325	28,632	33,769	W	146,041	NA

See footnotes at end of table.

Prime Supplier Sales Volumes of Petroleum Products by Grade, PAD District, and State

(Thousand Gallons) — Continued

Geographic Area Products	January 2008	February 2008	March 2008	April 2008	May 2008	June 2008	Cumulative Year To Date 2007	Cumulative Year To Date 2008	Adjusted Year To Date % Change ¹
New York									
Motor Gasoline	448,232	424,767	459,251	450,768	469,065	460,213	2,808,413	2,712,296	-4.0
Regular	380,810	361,473	391,563	383,855	403,398	395,887	2,341,812	2,316,986	-1.6
Conventional	167,344	162,314	172,681	170,992	194,934	187,287	1,187,311	1,055,552	-11.6
Reformulated	213,466	199,159	218,882	212,863	208,464	208,600	1,154,501	1,261,434	8.7
Midgrade	14,828	13,896	15,116	14,942	15,475	15,283	110,759	89,540	-19.6
Conventional	3,169	2,885	2,983	3,062	3,558	3,359	27,315	19,016	-30.8
Reformulated	11,659	11,011	12,133	11,880	11,917	11,924	83,444	70,524	-15.9
Premium	52,594	49,398	52,572	51,971	50,192	49,043	355,842	305,770	-14.5
Conventional	8,879	8,631	8,747	10,384	11,126	10,428	78,726	58,195	-26.5
Reformulated	43,715	40,767	43,825	41,587	39,066	38,615	277,116	247,575	-11.2
Total Distillate	W	256,625	W	W	W	W	W	W	W
No. 1 Distillate	W	8,095	W	W	W	W	W	W	NA
No. 2 Distillate	252,452	236,528	W	157,141	134,231	122,025	W	W	NA
No. 2 Fuel Oil	170,357	162,003	130,969	73,928	42,592	30,918	710,569	610,767	-14.5
No. 2 Diesel Fuel	NA	NA	NA	NA	NA	NA	NA	NA	NA
Ultra Low Sulfur	64,541	61,105	62,801	69,688	78,032	78,115	404,593	W	NA
Low Sulfur	16,853	13,050	W	13,173	13,336	12,774	W	W	NA
High Sulfur	701	370	353	352	271	218	80,906	W	NA
No. 4 Fuel	12,547	12,002	9,973	5,933	3,655	2,140	66,248	46,250	-30.6
Aviation Gasoline	98	113	82	131	188	154	W	766	NA
Kerosene-Type Jet Fuel	62,764	59,181	65,805	63,960	66,876	67,756	318,651	386,342	20.6
Kerosene	W	11,240	6,272	W	W	W	W	W	NA
Propane	45,968	41,624	41,033	27,178	19,221	15,884	194,264	190,908	-2.3
Residual Fuel Oil	142,145	124,258	100,247	88,825	77,781	77,582	926,924	610,838	-34.5
Sulfur Content <= 1 %	73,966	68,840	40,629	30,700	15,597	25,479	504,579	255,211	-49.7
Sulfur Content > 1 %	68,179	55,418	59,618	58,125	62,184	52,103	422,345	355,627	-16.3
Pennsylvania									
Motor Gasoline	389,653	365,713	389,869	399,060	408,841	397,272	2,518,291	2,350,408	-7.2
Regular	351,733	334,605	355,868	363,531	371,979	362,313	2,259,295	2,140,029	-5.8
Conventional	252,442	241,802	256,709	268,852	275,454	273,286	1,702,789	1,568,545	-8.4
Reformulated	99,291	92,803	99,159	94,679	96,525	89,027	556,506	571,484	2.1
Midgrade	8,564	8,084	8,889	8,534	8,677	8,036	58,807	50,784	-14.1
Conventional	4,997	4,644	5,301	5,055	5,326	5,123	34,198	30,446	-11.5
Reformulated	3,567	3,440	3,588	3,479	3,351	2,913	24,609	20,338	-17.8
Premium	29,356	23,024	25,112	26,995	28,185	26,923	200,189	159,595	-20.7
Conventional	17,396	12,321	12,803	15,821	16,310	17,229	126,120	91,880	-27.5
Reformulated	11,960	10,703	12,309	11,174	11,875	9,694	74,069	67,715	-9.1
Total Distillate	W	W	W	W	W	W	W	W	W
No. 1 Distillate	W	W	W	W	W	W	W	W	NA
No. 2 Distillate	250,428	254,186	219,983	197,511	189,411	181,307	1,532,869	1,292,826	-16.1
No. 2 Fuel Oil	102,572	112,790	82,887	45,485	W	32,707	539,384	W	NA
No. 2 Diesel Fuel	NA	NA	NA	NA	NA	NA	NA	NA	NA
Ultra Low Sulfur	109,178	112,262	106,546	116,736	121,751	113,411	635,304	679,884	6.4
Low Sulfur	W	W	30,483	W	W	W	205,285	W	NA
High Sulfur	W	W	67	W	W	W	152,896	W	NA
No. 4 Fuel	W	W	W	W	W	W	W	W	NA
Aviation Gasoline	377	287	316	361	598	527	2,908	2,466	-15.7
Kerosene-Type Jet Fuel	43,633	42,072	45,626	43,038	46,248	48,640	280,699	269,257	-4.6
Kerosene	11,487	8,380	3,229	521	460	288	26,009	24,365	-6.8
Propane	49,596	46,440	39,198	27,906	19,541	16,425	238,760	199,106	-17.1
Residual Fuel Oil	12,229	7,962	11,642	12,488	7,448	7,229	90,448	58,998	-35.1
Sulfur Content <= 1 %	W	W	W	W	W	W	W	W	NA
Sulfur Content > 1 %	W	W	W	W	W	W	W	W	NA

See footnotes at end of table.

Prime Supplier Sales Volumes of Petroleum Products by Grade, PAD District, and State

(Thousand Gallons) — Continued

Geographic Area Products	January 2008	February 2008	March 2008	April 2008	May 2008	June 2008	Cumulative Year To Date 2007	Cumulative Year To Date 2008	Adjusted Year To Date % Change ¹
Subdistrict IC									
Motor Gasoline	1,958,978	1,918,679	2,062,691	1,977,703	2,012,674	1,920,824	12,383,724	11,851,549	-4.8
Regular	1,683,100	1,649,312	1,785,325	1,718,925	1,760,638	1,696,492	10,420,103	10,293,792	-1.8
Conventional	1,529,571	1,505,015	1,627,858	1,564,382	1,606,465	1,544,662	9,585,459	9,377,953	-2.7
Reformulated	153,529	144,297	157,467	154,543	154,173	151,830	834,644	915,839	9.1
Midgrade	82,243	80,541	82,832	77,737	76,456	68,488	617,578	468,297	-24.6
Conventional	72,980	71,485	73,665	68,529	67,783	60,509	556,002	414,951	-25.8
Reformulated	9,263	9,056	9,167	9,208	8,673	7,979	61,576	53,346	-13.8
Premium	193,635	188,826	194,534	181,041	175,580	155,844	1,346,043	1,089,460	-19.5
Conventional	168,978	165,278	170,464	157,387	153,283	134,635	1,198,407	950,025	-21.2
Reformulated	24,657	23,548	24,070	23,654	22,297	21,209	147,636	139,435	-6.1
Total Distillate	W	W	W	W	W	W	W	W	W
No. 1 Distillate	W	W	W	W	W	W	W	W	NA
No. 2 Distillate	709,840	651,514	676,335	688,882	689,176	656,530	4,398,440	4,072,277	-7.9
No. 2 Fuel Oil	38,269	33,737	31,487	27,381	26,216	W	448,594	W	NA
No. 2 Diesel Fuel	NA	NA	NA	NA	NA	NA	NA	NA	NA
Ultra Low Sulfur	444,045	418,756	444,097	461,568	468,279	448,292	2,414,357	2,685,037	10.6
Low Sulfur	W	W	W	W	W	172,869	1,023,496	W	NA
High Sulfur	W	W	W	W	W	W	511,993	W	NA
No. 4 Fuel	W	W	W	W	W	W	W	W	NA
Aviation Gasoline	2,700	2,862	3,208	3,353	2,860	3,033	20,756	18,016	-13.7
Kerosene-Type Jet Fuel	211,239	203,331	202,268	232,744	221,288	226,530	1,196,742	1,297,400	7.8
Kerosene	16,199	8,017	3,326	872	W	465	W	W	NA
Propane	182,254	138,475	105,677	67,594	52,525	47,660	657,306	594,185	-10.1
Residual Fuel Oil	52,943	34,863	35,169	68,599	68,335	65,361	558,212	325,270	-42.1
Sulfur Content <= 1 %	7,651	10,120	7,455	14,090	6,820	2,796	W	48,932	NA
Sulfur Content > 1 %	45,292	24,743	27,714	54,509	61,515	62,565	W	276,338	NA
Florida									
Motor Gasoline	693,808	689,450	736,526	693,613	689,331	636,233	4,337,672	4,138,961	-5.1
Regular	583,770	580,117	623,195	588,571	587,074	549,173	3,536,947	3,511,900	-1.3
Conventional	583,770	580,117	623,195	588,571	587,074	549,173	3,536,947	3,511,900	-1.3
Reformulated	-	-	-	-	-	-	-	-	-
Midgrade	34,915	34,941	36,141	33,832	33,392	28,721	262,917	201,942	-23.6
Conventional	34,915	34,941	36,141	33,832	33,392	28,721	262,917	201,942	-23.6
Reformulated	-	-	-	-	-	-	-	-	-
Premium	75,123	74,392	77,190	71,210	68,865	58,339	537,808	425,119	-21.4
Conventional	75,123	74,392	77,190	71,210	68,865	58,339	537,808	425,119	-21.4
Reformulated	-	-	-	-	-	-	-	-	-
Total Distillate	W	W	W	W	W	W	W	W	W
No. 1 Distillate	-	-	-	-	-	-	W	-	NA
No. 2 Distillate	185,075	174,968	179,187	179,604	W	160,857	1,185,636	W	NA
No. 2 Fuel Oil	W	806	W	W	W	-	70,326	W	NA
No. 2 Diesel Fuel	NA	NA	NA	NA	NA	NA	NA	NA	NA
Ultra Low Sulfur	141,461	134,229	137,155	136,622	137,283	125,551	825,159	812,301	-2.1
Low Sulfur	38,004	W	36,637	36,954	32,887	W	157,666	W	NA
High Sulfur	W	W	W	W	W	W	132,485	W	NA
No. 4 Fuel	W	W	W	W	-	-	W	W	NA
Aviation Gasoline	1,504	1,740	1,888	2,050	1,823	1,787	10,953	10,792	-2.0
Kerosene-Type Jet Fuel	111,029	108,340	110,642	133,488	111,109	114,737	602,130	689,345	13.9
Kerosene	W	W	W	W	W	9	W	W	NA
Propane	22,793	19,640	19,356	17,280	15,483	12,492	123,970	107,044	-14.1
Residual Fuel Oil	26,669	10,931	13,724	46,266	47,672	48,994	349,639	194,256	-44.7
Sulfur Content <= 1 %	6,342	W	6,351	11,215	W	W	W	W	NA
Sulfur Content > 1 %	20,327	W	7,373	35,051	W	W	W	W	NA

See footnotes at end of table.

Prime Supplier Sales Volumes of Petroleum Products by Grade, PAD District, and State

(Thousand Gallons) — Continued

Geographic Area Products	January 2008	February 2008	March 2008	April 2008	May 2008	June 2008	Cumulative Year To Date 2007	Cumulative Year To Date 2008	Adjusted Year To Date % Change ¹
Georgia									
Motor Gasoline	384,710	376,843	409,562	374,554	378,106	369,217	2,366,447	2,292,992	-3.6
Regular	329,729	322,025	353,117	324,343	330,239	325,268	1,990,674	1,984,721	-0.8
Conventional	329,729	322,025	353,117	324,343	330,239	325,268	1,990,674	1,984,721	-0.8
Reformulated	-	-	-	-	-	-	-	-	-
Midgrade	18,004	17,625	18,225	16,620	15,985	15,341	131,847	101,800	-23.2
Conventional	18,004	17,625	18,225	16,620	15,985	15,341	131,847	101,800	-23.2
Reformulated	-	-	-	-	-	-	-	-	-
Premium	36,977	37,193	38,220	33,591	31,882	28,608	243,926	206,471	-15.8
Conventional	36,977	37,193	38,220	33,591	31,882	28,608	243,926	206,471	-15.8
Reformulated	-	-	-	-	-	-	-	-	-
Total Distillate	W	W	W	W	W	W	W	W	W
No. 1 Distillate	W	W	W	-	-	-	W	W	NA
No. 2 Distillate	154,032	140,842	151,879	154,371	156,717	151,289	1,000,769	909,130	-9.7
No. 2 Fuel Oil	W	W	W	W	W	W	56,619	W	NA
No. 2 Diesel Fuel	NA	NA	NA	NA	NA	NA	NA	NA	NA
Ultra Low Sulfur	95,662	89,744	98,527	101,056	102,119	99,979	533,765	587,087	9.4
Low Sulfur	50,021	44,328	46,049	44,430	45,839	43,877	320,072	274,544	-14.7
High Sulfur	W	W	W	W	W	W	90,313	W	NA
No. 4 Fuel	-	-	-	-	-	-	-	-	-
Aviation Gasoline	587	486	482	258	269	517	4,627	2,599	-44.1
Kerosene-Type Jet Fuel	18,483	16,002	20,606	23,328	21,540	19,965	116,309	119,924	2.5
Kerosene	W	W	W	98	61	83	W	W	NA
Propane	33,269	22,169	16,985	10,093	8,660	7,607	102,975	98,783	-4.6
Residual Fuel Oil	W	2,432	W	W	W	W	W	W	NA
Sulfur Content <= 1 %	-	-	-	-	-	-	W	-	NA
Sulfur Content > 1 %	W	2,432	W	W	W	W	W	W	NA
North Carolina									
Motor Gasoline	327,814	322,770	339,004	337,598	348,967	334,423	2,095,829	2,010,576	-4.6
Regular	291,563	287,392	302,927	303,780	316,640	305,925	1,823,310	1,808,227	-1.4
Conventional	291,563	287,392	302,927	303,780	316,640	305,925	1,823,310	1,808,227	-1.4
Reformulated	-	-	-	-	-	-	-	-	-
Midgrade	8,558	8,068	8,138	7,516	7,152	6,026	71,273	45,458	-36.6
Conventional	8,558	8,068	8,138	7,516	7,152	6,026	71,273	45,458	-36.6
Reformulated	-	-	-	-	-	-	-	-	-
Premium	27,693	27,310	27,939	26,302	25,175	22,472	201,246	156,891	-22.5
Conventional	27,693	27,310	27,939	26,302	25,175	22,472	201,246	156,891	-22.5
Reformulated	-	-	-	-	-	-	-	-	-
Total Distillate	W	W	W	W	W	W	W	W	W
No. 1 Distillate	W	W	W	W	W	W	W	W	NA
No. 2 Distillate	123,200	112,662	115,363	118,769	118,883	115,774	717,958	704,651	-2.4
No. 2 Fuel Oil	6,046	5,081	4,482	W	W	4,086	91,422	W	NA
No. 2 Diesel Fuel	NA	NA	NA	NA	NA	NA	NA	NA	NA
Ultra Low Sulfur	73,873	68,594	73,931	77,784	78,260	76,274	383,732	448,716	16.3
Low Sulfur	W	W	W	36,193	36,102	W	135,698	W	NA
High Sulfur	W	W	W	W	W	W	107,106	W	NA
No. 4 Fuel	-	-	-	-	-	-	-	-	-
Aviation Gasoline	431	507	517	699	436	231	2,818	2,821	-0.4
Kerosene-Type Jet Fuel	22,982	25,585	13,669	19,778	25,420	25,493	101,853	132,927	29.8
Kerosene	W	W	W	W	W	W	W	W	NA
Propane	61,617	45,943	32,609	17,708	13,199	12,922	200,411	183,998	-8.7
Residual Fuel Oil	12,436	11,794	10,890	10,848	7,401	8,108	81,255	61,477	-24.8
Sulfur Content <= 1 %	W	W	W	W	W	W	W	W	NA
Sulfur Content > 1 %	W	W	W	W	W	W	W	W	NA

See footnotes at end of table.

Prime Supplier Sales Volumes of Petroleum Products by Grade, PAD District, and State

(Thousand Gallons) — Continued

Geographic Area Products	January 2008	February 2008	March 2008	April 2008	May 2008	June 2008	Cumulative Year To Date 2007	Cumulative Year To Date 2008	Adjusted Year To Date % Change ¹
South Carolina									
Motor Gasoline	194,666	190,548	208,171	204,845	215,696	206,249	1,263,698	1,220,175	-4.0
Regular	172,052	168,661	185,766	183,344	193,715	186,692	1,097,923	1,090,230	-1.2
Conventional	172,052	168,661	185,766	183,344	193,715	186,692	1,097,923	1,090,230	-1.2
Reformulated	-	-	-	-	-	-	-	-	-
Midgrade	6,884	6,452	6,613	6,395	6,636	6,000	49,648	38,980	-21.9
Conventional	6,884	6,452	6,613	6,395	6,636	6,000	49,648	38,980	-21.9
Reformulated	-	-	-	-	-	-	-	-	-
Premium	15,730	15,435	15,792	15,106	15,345	13,557	116,127	90,965	-22.1
Conventional	15,730	15,435	15,792	15,106	15,345	13,557	116,127	90,965	-22.1
Reformulated	-	-	-	-	-	-	-	-	-
Total Distillate	W	W	W	W	W	W	W	W	W
No. 1 Distillate	W	W	W	W	-	-	W	W	NA
No. 2 Distillate	75,720	69,328	74,633	77,762	80,383	74,363	452,568	452,189	-0.6
No. 2 Fuel Oil	1,866	W	W	W	W	W	W	W	NA
No. 2 Diesel Fuel	NA	NA	NA	NA	NA	NA	NA	NA	NA
Ultra Low Sulfur	46,721	45,095	49,172	51,703	54,706	50,664	245,419	298,061	20.8
Low Sulfur	W	21,947	22,943	23,237	23,052	21,676	W	W	NA
High Sulfur	W	W	W	W	W	W	W	W	NA
No. 4 Fuel	W	W	W	W	-	-	W	W	NA
Aviation Gasoline	W	W	108	W	62	W	W	W	NA
Kerosene-Type Jet Fuel	6,148	5,045	5,700	5,925	5,646	5,524	33,771	33,988	0.1
Kerosene	2,333	1,004	456	129	182	88	W	4,192	NA
Propane	25,971	18,418	13,927	9,132	6,844	7,076	88,526	81,368	-8.6
Residual Fuel Oil	W	W	W	W	W	W	W	W	NA
Sulfur Content <= 1 %	W	W	W	W	W	W	W	W	NA
Sulfur Content > 1 %	W	W	W	W	W	W	W	W	NA
Virginia									
Motor Gasoline	302,293	284,444	309,733	308,621	321,213	315,783	1,964,679	1,842,087	-6.8
Regular	254,142	240,182	264,525	264,164	277,426	274,200	1,644,748	1,574,639	-4.8
Conventional	100,613	95,885	107,058	109,621	123,253	122,370	810,104	658,800	-19.1
Reformulated	153,529	144,297	157,467	154,543	154,173	151,830	834,644	915,839	9.1
Midgrade	12,371	12,001	12,272	12,004	11,877	11,044	90,677	71,569	-21.5
Conventional	3,108	2,945	3,105	2,796	3,204	3,065	29,101	18,223	-37.7
Reformulated	9,263	9,056	9,167	9,208	8,673	7,979	61,576	53,346	-13.8
Premium	35,780	32,261	32,936	32,453	31,910	30,539	229,254	195,879	-15.0
Conventional	11,123	8,713	8,866	8,799	9,613	9,330	81,618	56,444	-31.2
Reformulated	24,657	23,548	24,070	23,654	22,297	21,209	147,636	139,435	-6.1
Total Distillate	W	W	W	W	W	W	W	W	W
No. 1 Distillate	W	W	W	-	-	-	W	W	NA
No. 2 Distillate	132,179	117,810	117,157	120,748	119,031	114,289	803,297	721,214	-10.7
No. 2 Fuel Oil	14,930	13,608	11,481	6,546	6,863	3,375	147,253	56,803	-61.6
No. 2 Diesel Fuel	NA	NA	NA	NA	NA	NA	NA	NA	NA
Ultra Low Sulfur	66,839	62,903	66,025	75,768	75,614	75,896	323,607	423,045	30.0
Low Sulfur	W	W	W	W	W	W	238,657	W	NA
High Sulfur	W	W	W	W	W	W	93,780	W	NA
No. 4 Fuel	W	W	W	W	W	W	W	W	NA
Aviation Gasoline	59	48	186	227	145	348	1,525	1,013	-33.9
Kerosene-Type Jet Fuel	51,955	47,697	50,945	49,526	56,823	60,036	338,725	316,982	-6.9
Kerosene	4,838	1,879	1,026	W	W	W	W	W	NA
Propane	32,312	26,876	18,900	11,872	7,025	6,393	111,779	103,378	-8.0
Residual Fuel Oil	4,025	6,087	3,260	3,664	6,464	3,037	37,767	26,537	-30.1
Sulfur Content <= 1 %	W	W	W	W	4,048	W	W	W	NA
Sulfur Content > 1 %	W	W	W	W	2,416	W	W	W	NA

See footnotes at end of table.

Prime Supplier Sales Volumes of Petroleum Products by Grade, PAD District, and State

(Thousand Gallons) — Continued

Geographic Area Products	January 2008	February 2008	March 2008	April 2008	May 2008	June 2008	Cumulative Year To Date 2007	Cumulative Year To Date 2008	Adjusted Year To Date % Change ¹
West Virginia									
Motor Gasoline	55,687	54,624	59,695	58,472	59,361	58,919	355,399	346,758	-3.0
Regular	51,844	50,935	55,795	54,723	55,544	55,234	326,501	324,075	-1.3
Conventional	51,844	50,935	55,795	54,723	55,544	55,234	326,501	324,075	-1.3
Reformulated	-	-	-	-	-	-	-	-	-
Midgrade	1,511	1,454	1,443	1,370	1,414	1,356	11,216	8,548	-24.2
Conventional	1,511	1,454	1,443	1,370	1,414	1,356	11,216	8,548	-24.2
Reformulated	-	-	-	-	-	-	-	-	-
Premium	2,332	2,235	2,457	2,379	2,403	2,329	17,682	14,135	-20.5
Conventional	2,332	2,235	2,457	2,379	2,403	2,329	17,682	14,135	-20.5
Reformulated	-	-	-	-	-	-	-	-	-
Total Distillate	W	W	W	W	W	W	W	W	W
No. 1 Distillate	W	W	W	W	W	W	W	W	NA
No. 2 Distillate	39,634	35,904	38,116	37,628	W	39,958	238,212	W	NA
No. 2 Fuel Oil	W	W	W	W	W	W	W	W	NA
No. 2 Diesel Fuel	NA	NA	NA	NA	NA	NA	NA	NA	NA
Ultra Low Sulfur	19,489	18,191	19,287	18,635	20,297	19,928	102,675	115,827	12.2
Low Sulfur	8,789	7,202	7,375	6,957	6,669	7,257	W	44,249	NA
High Sulfur	W	W	W	W	W	W	W	W	NA
No. 4 Fuel	-	-	-	-	-	-	-	-	-
Aviation Gasoline	W	W	27	W	125	W	W	W	NA
Kerosene-Type Jet Fuel	642	662	706	699	750	775	3,954	4,234	6.5
Kerosene	W	W	W	W	W	W	W	W	NA
Propane	6,292	5,429	3,900	1,509	1,314	1,170	29,645	19,614	-34.2
Residual Fuel Oil	3,278	W	2,364	2,653	2,197	1,129	W	W	NA
Sulfur Content <= 1 %	W	W	W	W	W	W	W	W	NA
Sulfur Content > 1 %	W	W	W	W	W	W	W	W	NA
PAD District II									
Motor Gasoline	2,973,830	2,855,307	3,021,090	3,026,392	3,095,908	2,961,531	18,383,171	17,934,058	-3.0
Regular	2,505,070	2,397,486	2,567,463	2,576,563	2,631,700	2,512,375	15,720,088	15,190,657	-3.9
Conventional	2,089,042	2,002,311	2,157,647	2,178,138	2,219,844	2,115,662	13,357,618	12,762,644	-5.0
Reformulated	416,028	395,175	409,816	398,425	411,856	396,713	2,362,470	2,428,013	2.2
Midgrade	307,307	304,602	301,071	296,994	301,127	290,998	1,551,950	1,802,099	15.5
Conventional	286,842	284,991	281,639	278,780	282,956	273,802	1,417,398	1,689,010	18.5
Reformulated	20,465	19,611	19,432	18,214	18,171	17,196	134,552	113,089	-16.4
Premium	161,453	153,219	152,556	152,835	163,081	158,158	1,111,133	941,302	-15.7
Conventional	118,239	112,061	110,514	111,628	123,825	119,997	844,589	696,264	-18.0
Reformulated	43,214	41,158	42,042	41,207	39,256	38,161	266,544	245,038	-8.6
Total Distillate	W	W	W	W	W	W	W	W	W
No. 1 Distillate	41,839	36,645	13,722	5,503	5,347	5,416	111,670	108,472	-3.4
No. 2 Distillate	1,437,879	1,329,513	1,461,075	1,524,830	1,581,656	1,489,028	8,568,594	8,823,981	2.4
No. 2 Fuel Oil	33,540	28,769	W	W	W	W	154,899	W	NA
No. 2 Diesel Fuel	NA	NA	NA	NA	NA	NA	NA	NA	NA
Ultra Low Sulfur	1,094,516	1,003,752	1,111,327	1,172,167	1,210,726	1,140,313	5,973,758	6,732,801	12.1
Low Sulfur	291,446	284,834	W	W	W	301,348	1,691,390	W	NA
High Sulfur	18,377	12,158	13,473	10,730	W	W	748,547	W	NA
No. 4 Fuel	-	-	-	-	W	W	W	W	NA
Aviation Gasoline	2,346	2,807	2,896	3,550	5,004	5,292	23,059	21,895	-5.6
Kerosene-Type Jet Fuel	313,825	298,526	333,544	342,137	337,253	350,511	2,015,926	1,975,796	-2.5
Kerosene	11,434	8,258	3,707	954	W	W	W	W	NA
Propane	574,479	520,421	357,192	210,619	169,074	155,161	2,062,386	1,986,946	-4.2
Residual Fuel Oil	22,138	19,875	20,635	24,879	25,607	22,843	150,248	135,977	-10.0
Sulfur Content <= 1 %	W	W	W	W	W	W	W	W	NA
Sulfur Content > 1 %	W	W	W	W	W	W	W	W	NA

See footnotes at end of table.

Prime Supplier Sales Volumes of Petroleum Products by Grade, PAD District, and State

(Thousand Gallons) — Continued

Geographic Area Products	January 2008	February 2008	March 2008	April 2008	May 2008	June 2008	Cumulative Year To Date 2007	Cumulative Year To Date 2008	Adjusted Year To Date % Change ¹
Illinois									
Motor Gasoline	421,181	410,595	421,598	420,446	426,733	410,112	2,581,264	2,510,665	-3.3
Regular	342,962	334,624	346,090	346,316	352,816	345,942	2,104,561	2,068,750	-2.2
Conventional	113,175	114,766	118,646	129,102	128,766	128,541	822,645	732,996	-11.4
Reformulated	229,787	219,858	227,444	217,214	224,050	217,401	1,281,916	1,335,754	3.6
Midgrade	43,239	42,680	41,233	40,940	41,781	33,071	254,635	242,944	-5.1
Conventional	28,653	28,359	27,436	27,981	28,820	20,958	156,937	162,207	2.8
Reformulated	14,586	14,321	13,797	12,959	12,961	12,113	97,698	80,737	-17.8
Premium	34,980	33,291	34,275	33,190	32,136	31,099	222,068	198,971	-10.9
Conventional	5,392	5,176	5,359	5,365	5,797	5,721	40,394	32,810	-19.2
Reformulated	29,588	28,115	28,916	27,825	26,339	25,378	181,674	166,161	-9.0
Total Distillate	W	W	W	W	W	W	W	W	W
No. 1 Distillate	6,195	5,344	2,818	W	W	W	W	W	NA
No. 2 Distillate	148,697	141,244	148,007	161,466	156,953	142,797	905,427	899,164	-1.2
No. 2 Fuel Oil	277	210	201	W	W	W	54,092	W	NA
No. 2 Diesel Fuel	NA	NA	NA	NA	NA	NA	NA	NA	NA
Ultra Low Sulfur	116,361	109,596	115,470	122,433	117,685	107,931	618,755	689,476	10.8
Low Sulfur	W	W	W	38,376	38,673	34,297	W	W	NA
High Sulfur	W	W	W	W	W	W	W	W	NA
No. 4 Fuel	-	-	-	-	-	-	-	-	-
Aviation Gasoline	199	332	355	419	284	368	2,069	1,957	-5.9
Kerosene-Type Jet Fuel	86,874	75,199	86,173	82,164	89,307	95,114	522,486	514,831	-2.0
Kerosene	1,194	875	321	W	W	W	W	W	NA
Propane	51,837	46,560	32,990	20,025	17,121	17,969	182,771	186,502	1.5
Residual Fuel Oil	W	777	W	W	W	690	W	W	NA
Sulfur Content <= 1 %	W	W	W	W	W	W	W	W	NA
Sulfur Content > 1 %	W	W	W	W	W	W	W	W	NA
Indiana									
Motor Gasoline	241,657	228,301	241,633	246,442	256,139	247,544	1,481,748	1,461,716	-1.9
Regular	202,722	194,756	207,540	211,303	220,069	212,509	1,292,890	1,248,899	-3.9
Conventional	171,327	162,564	175,968	180,991	188,067	181,137	1,095,172	1,060,054	-3.7
Reformulated	31,395	32,192	31,572	30,312	32,002	31,372	197,718	188,845	-5.0
Midgrade	27,066	22,423	22,523	23,632	24,363	23,674	106,308	143,681	34.4
Conventional	25,901	21,231	21,371	22,622	23,274	22,602	98,166	137,001	38.8
Reformulated	1,165	1,192	1,152	1,010	1,089	1,072	8,142	6,680	-18.4
Premium	11,869	11,122	11,570	11,507	11,707	11,361	82,550	69,136	-16.7
Conventional	9,087	8,265	8,864	8,839	8,907	8,642	63,785	52,604	-18.0
Reformulated	2,782	2,857	2,706	2,668	2,800	2,719	18,765	16,532	-12.4
Total Distillate	W	W	W	W	W	W	W	W	W
No. 1 Distillate	1,339	W	243	W	W	W	W	W	NA
No. 2 Distillate	162,797	150,949	156,062	169,998	163,508	155,987	941,119	959,301	1.4
No. 2 Fuel Oil	W	W	W	2,793	2,377	W	6,374	W	NA
No. 2 Diesel Fuel	NA	NA	NA	NA	NA	NA	NA	NA	NA
Ultra Low Sulfur	113,667	104,338	110,502	118,440	114,436	110,279	602,179	671,662	10.9
Low Sulfur	W	43,781	W	48,765	46,695	W	259,196	W	NA
High Sulfur	-	W	-	-	-	-	73,370	W	NA
No. 4 Fuel	-	-	-	-	W	W	-	W	NA
Aviation Gasoline	W	138	W	206	171	183	W	W	NA
Kerosene-Type Jet Fuel	18,769	18,828	19,564	23,617	26,130	18,809	132,286	125,717	-5.5
Kerosene	2,006	W	635	W	W	W	W	W	NA
Propane	37,389	31,940	22,048	10,425	9,371	9,495	126,076	120,668	-4.8
Residual Fuel Oil	1,016	433	501	2,300	2,255	1,679	13,123	8,184	-38.0
Sulfur Content <= 1 %	W	W	W	W	W	W	W	W	NA
Sulfur Content > 1 %	W	W	W	W	W	W	W	W	NA

See footnotes at end of table.

Prime Supplier Sales Volumes of Petroleum Products by Grade, PAD District, and State

(Thousand Gallons) — Continued

Geographic Area Products	January 2008	February 2008	March 2008	April 2008	May 2008	June 2008	Cumulative Year To Date 2007	Cumulative Year To Date 2008	Adjusted Year To Date % Change ¹
Iowa									
Motor Gasoline	100,971	95,686	102,541	99,223	115,060	106,984	652,843	620,465	-5.5
Regular	53,609	45,284	53,682	51,591	64,256	56,261	333,877	324,683	-3.3
Conventional	53,609	45,284	53,682	51,591	64,256	56,261	333,877	324,683	-3.3
Reformulated	-	-	-	-	-	-	-	-	-
Midgrade	44,413	47,687	46,036	44,696	47,516	47,248	297,588	277,596	-7.2
Conventional	44,413	47,687	46,036	44,696	47,516	47,248	297,588	277,596	-7.2
Reformulated	-	-	-	-	-	-	-	-	-
Premium	2,949	2,715	2,823	2,936	3,288	3,475	21,378	18,186	-15.4
Conventional	2,949	2,715	2,823	2,936	3,288	3,475	21,378	18,186	-15.4
Reformulated	-	-	-	-	-	-	-	-	-
Total Distillate	W	W	W	W	W	W	W	W	W
No. 1 Distillate	5,430	4,464	W	W	W	W	W	W	NA
No. 2 Distillate	66,524	60,288	71,943	81,957	90,450	75,799	430,187	446,961	3.3
No. 2 Fuel Oil	W	W	W	W	W	-	W	W	NA
No. 2 Diesel Fuel	NA	NA	NA	NA	NA	NA	NA	NA	NA
Ultra Low Sulfur	55,511	50,576	59,629	66,952	74,180	62,394	356,921	369,242	2.9
Low Sulfur	W	W	W	W	W	13,405	W	W	NA
High Sulfur	-	-	-	-	-	-	W	-	NA
No. 4 Fuel	-	-	-	-	-	-	-	-	-
Aviation Gasoline	77	103	114	187	161	W	W	W	NA
Kerosene-Type Jet Fuel	2,362	2,317	2,560	2,407	2,480	W	16,132	W	NA
Kerosene	194	107	W	W	W	W	W	W	NA
Propane	55,193	48,177	28,986	16,198	9,514	10,255	145,777	168,323	14.8
Residual Fuel Oil	W	W	W	W	W	W	W	W	NA
Sulfur Content <= 1 %	W	W	W	W	W	W	W	W	NA
Sulfur Content > 1 %	W	W	W	-	-	-	W	W	NA
Kansas									
Motor Gasoline	119,594	116,261	119,652	121,573	124,808	115,578	722,196	717,466	-1.2
Regular	93,712	90,478	90,954	93,566	95,935	87,463	626,249	552,108	-12.3
Conventional	93,712	90,478	90,954	93,566	95,935	87,463	626,249	552,108	-12.3
Reformulated	-	-	-	-	-	-	-	-	-
Midgrade	20,834	21,182	23,706	23,157	23,858	23,588	60,884	136,325	122.7
Conventional	20,834	21,182	23,706	23,157	23,858	23,588	60,884	136,325	122.7
Reformulated	-	-	-	-	-	-	-	-	-
Premium	5,048	4,601	4,992	4,850	5,015	4,527	35,063	29,033	-17.7
Conventional	5,048	4,601	4,992	4,850	5,015	4,527	35,063	29,033	-17.7
Reformulated	-	-	-	-	-	-	-	-	-
Total Distillate	W	W	W	W	W	W	W	W	W
No. 1 Distillate	W	W	W	W	222	W	W	W	NA
No. 2 Distillate	66,833	62,075	70,921	75,778	83,503	81,730	423,832	440,840	3.4
No. 2 Fuel Oil	-	-	-	-	-	-	W	-	NA
No. 2 Diesel Fuel	NA	NA	NA	NA	NA	NA	NA	NA	NA
Ultra Low Sulfur	56,101	53,307	W	67,260	W	73,862	396,688	W	NA
Low Sulfur	10,732	8,768	W	8,518	W	7,868	W	W	NA
High Sulfur	-	-	-	-	-	-	W	-	NA
No. 4 Fuel	-	-	-	-	-	-	-	-	-
Aviation Gasoline	201	W	179	234	278	277	W	W	NA
Kerosene-Type Jet Fuel	4,288	4,220	4,168	4,006	4,781	4,511	30,419	25,974	-15.1
Kerosene	W	W	W	W	-	W	W	W	NA
Propane	64,347	62,460	46,190	37,910	37,169	33,509	308,375	281,585	-9.2
Residual Fuel Oil	W	W	W	W	W	W	W	W	NA
Sulfur Content <= 1 %	W	W	W	W	W	W	W	W	NA
Sulfur Content > 1 %	W	W	W	W	W	W	W	W	NA

See footnotes at end of table.

Prime Supplier Sales Volumes of Petroleum Products by Grade, PAD District, and State

(Thousand Gallons) — Continued

Geographic Area Products	January 2008	February 2008	March 2008	April 2008	May 2008	June 2008	Cumulative Year To Date 2007	Cumulative Year To Date 2008	Adjusted Year To Date % Change ¹
Kentucky									
Motor Gasoline	164,508	155,312	171,967	165,821	174,164	163,933	1,044,687	995,705	-5.2
Regular	151,255	141,471	158,276	152,918	161,903	151,633	951,119	917,456	-4.1
Conventional	113,378	108,553	121,634	117,005	123,164	118,818	729,007	702,552	-4.2
Reformulated	37,877	32,918	36,642	35,913	38,739	32,815	222,112	214,904	-3.8
Midgrade	4,582	5,661	5,183	4,566	4,325	4,349	29,739	28,666	-4.1
Conventional	3,575	4,655	4,159	3,567	3,388	3,418	22,780	22,762	-0.6
Reformulated	1,007	1,006	1,024	999	937	931	6,959	5,904	-15.6
Premium	8,671	8,180	8,508	8,337	7,936	7,951	63,829	49,583	-22.7
Conventional	6,064	5,714	5,906	5,776	5,930	5,621	46,377	35,011	-24.9
Reformulated	2,607	2,466	2,602	2,561	2,006	2,330	17,452	14,572	-17.0
Total Distillate	W	W	W	W	W	W	W	W	W
No. 1 Distillate	W	W	W	W	W	W	W	W	NA
No. 2 Distillate	106,069	97,945	107,721	103,345	104,545	105,105	645,004	624,730	-3.7
No. 2 Fuel Oil	W	W	W	W	W	W	9,524	W	NA
No. 2 Diesel Fuel	NA	NA	NA	NA	NA	NA	NA	NA	NA
Ultra Low Sulfur	65,716	58,851	67,713	63,242	64,285	64,808	340,856	384,615	12.2
Low Sulfur	27,544	27,844	28,550	28,218	25,612	27,926	145,109	165,694	13.6
High Sulfur	W	W	W	W	W	W	149,515	W	NA
No. 4 Fuel	-	-	-	-	-	-	-	-	-
Aviation Gasoline	118	174	174	244	420	138	W	1,268	NA
Kerosene-Type Jet Fuel	20,423	18,067	27,925	23,496	18,761	27,060	135,901	135,732	-0.7
Kerosene	W	W	W	W	W	W	W	W	NA
Propane	28,636	22,386	17,721	8,457	6,800	6,547	97,922	90,547	-8.0
Residual Fuel Oil	-	-	W	-	-	-	W	W	NA
Sulfur Content <= 1 %	-	-	-	-	-	-	-	-	-
Sulfur Content > 1 %	-	-	W	-	-	-	W	W	NA
Michigan									
Motor Gasoline	369,407	361,647	369,694	359,959	359,366	310,457	2,232,591	2,130,530	-5.1
Regular	333,863	326,443	333,744	321,840	329,900	282,173	1,983,454	1,927,963	-3.3
Conventional	333,863	326,443	333,744	321,840	329,900	282,173	1,983,454	1,927,963	-3.3
Reformulated	-	-	-	-	-	-	-	-	-
Midgrade	18,282	17,672	20,060	22,000	13,409	13,405	135,338	104,828	-23.0
Conventional	18,282	17,672	20,060	22,000	13,409	13,405	135,338	104,828	-23.0
Reformulated	-	-	-	-	-	-	-	-	-
Premium	17,262	17,532	15,890	16,119	16,057	14,879	113,799	97,739	-14.6
Conventional	17,262	17,532	15,890	16,119	16,057	14,879	113,799	97,739	-14.6
Reformulated	-	-	-	-	-	-	-	-	-
Total Distillate	W	W	W	W	W	W	W	W	W
No. 1 Distillate	W	W	W	W	W	W	W	W	NA
No. 2 Distillate	88,276	81,700	84,809	90,464	98,263	91,540	546,259	535,052	-2.6
No. 2 Fuel Oil	W	W	3,286	W	W	W	W	W	NA
No. 2 Diesel Fuel	NA	NA	NA	NA	NA	NA	NA	NA	NA
Ultra Low Sulfur	73,068	67,748	71,076	75,990	82,583	76,825	406,678	447,290	9.4
Low Sulfur	12,471	11,161	W	11,324	12,450	11,637	W	W	NA
High Sulfur	W	W	W	W	W	W	W	W	NA
No. 4 Fuel	-	-	-	-	-	-	-	-	-
Aviation Gasoline	124	174	189	261	448	351	1,652	1,547	-6.9
Kerosene-Type Jet Fuel	14,895	14,687	17,027	16,350	14,238	15,504	93,059	92,701	-0.9
Kerosene	W	W	W	W	W	W	W	W	NA
Propane	54,990	55,811	42,859	25,190	16,927	11,842	248,540	207,619	-16.9
Residual Fuel Oil	3,585	3,114	2,740	4,032	4,539	4,527	28,832	22,537	-22.3
Sulfur Content <= 1 %	W	W	W	W	1,007	W	W	W	NA
Sulfur Content > 1 %	W	W	W	W	3,532	W	W	W	NA

See footnotes at end of table.

Prime Supplier Sales Volumes of Petroleum Products by Grade, PAD District, and State

(Thousand Gallons) — Continued

Geographic Area Products	January 2008	February 2008	March 2008	April 2008	May 2008	June 2008	Cumulative Year To Date 2007	Cumulative Year To Date 2008	Adjusted Year To Date % Change ¹
Minnesota									
Motor Gasoline	201,386	194,844	201,933	191,595	212,044	202,154	1,256,758	1,203,956	-4.7
Regular	168,729	163,154	171,564	161,940	175,964	166,066	1,050,459	1,007,417	-4.6
Conventional	168,729	163,154	171,564	161,940	175,964	166,066	1,050,459	1,007,417	-4.6
Reformulated	-	-	-	-	-	-	-	-	-
Midgrade	23,334	22,604	21,864	21,523	25,654	26,287	146,224	141,266	-3.9
Conventional	23,334	22,604	21,864	21,523	25,654	26,287	146,224	141,266	-3.9
Reformulated	-	-	-	-	-	-	-	-	-
Premium	9,323	9,086	8,505	8,132	10,426	9,801	60,075	55,273	-8.5
Conventional	9,323	9,086	8,505	8,132	10,426	9,801	60,075	55,273	-8.5
Reformulated	-	-	-	-	-	-	-	-	-
Total Distillate	W	W	W	W	W	W	W	W	W
No. 1 Distillate	8,668	8,582	4,070	1,103	W	1,067	24,576	W	NA
No. 2 Distillate	73,413	70,753	73,454	74,959	86,603	77,344	478,490	456,526	-5.1
No. 2 Fuel Oil	255	W	W	W	242	111	W	W	NA
No. 2 Diesel Fuel	NA	NA	NA	NA	NA	NA	NA	NA	NA
Ultra Low Sulfur	60,003	57,599	58,273	60,339	72,515	64,674	356,640	373,403	4.1
Low Sulfur	W	10,345	11,664	10,212	W	W	W	W	NA
High Sulfur	W	W	W	W	W	W	W	W	NA
No. 4 Fuel	-	-	-	-	-	-	-	-	-
Aviation Gasoline	180	162	203	246	356	351	2,076	1,498	-28.2
Kerosene-Type Jet Fuel	28,881	28,608	32,443	35,354	35,577	33,377	206,728	194,240	-6.6
Kerosene	293	215	61	29	W	18	W	W	NA
Propane	53,361	48,956	29,436	15,412	11,991	11,920	155,716	171,076	9.3
Residual Fuel Oil	7,278	5,419	6,411	5,777	6,548	7,442	28,561	38,875	35.4
Sulfur Content <= 1 %	W	W	W	W	W	-	W	W	NA
Sulfur Content > 1 %	W	W	W	W	W	7,442	W	W	NA
Missouri									
Motor Gasoline	230,990	212,608	235,588	238,980	249,686	244,633	1,451,547	1,412,485	-3.2
Regular	190,484	173,424	201,407	209,731	217,068	213,660	1,302,584	1,205,774	-7.9
Conventional	124,593	111,587	134,204	145,710	151,461	149,252	932,978	816,807	-12.9
Reformulated	65,891	61,837	67,203	64,021	65,607	64,408	369,606	388,967	4.7
Midgrade	29,571	29,195	23,479	18,626	21,509	20,676	68,921	143,056	106.4
Conventional	27,049	27,243	21,156	16,599	19,433	18,642	54,671	130,122	136.7
Reformulated	2,522	1,952	2,323	2,027	2,076	2,034	14,250	12,934	-9.7
Premium	10,935	9,989	10,702	10,623	11,109	10,297	80,042	63,655	-20.9
Conventional	6,239	5,730	6,265	6,417	6,796	6,298	52,224	37,745	-28.1
Reformulated	4,696	4,259	4,437	4,206	4,313	3,999	27,818	25,910	-7.4
Total Distillate	W	W	W	W	W	W	W	W	W
No. 1 Distillate	439	359	100	W	W	W	W	W	NA
No. 2 Distillate	101,748	95,841	106,135	106,996	107,849	106,375	594,634	624,944	4.5
No. 2 Fuel Oil	W	W	W	W	W	W	W	W	NA
No. 2 Diesel Fuel	NA	NA	NA	NA	NA	NA	NA	NA	NA
Ultra Low Sulfur	81,429	76,624	85,566	88,669	88,236	86,855	437,842	507,379	15.2
Low Sulfur	20,006	18,957	20,431	18,247	19,594	19,386	W	116,621	NA
High Sulfur	W	W	W	W	W	W	W	W	NA
No. 4 Fuel	-	-	-	-	-	-	-	-	-
Aviation Gasoline	148	W	149	W	W	W	W	W	NA
Kerosene-Type Jet Fuel	17,490	17,910	19,000	16,919	17,989	19,876	W	109,184	NA
Kerosene	185	134	32	W	W	W	W	W	NA
Propane	50,389	42,782	27,357	14,137	9,360	8,000	149,746	152,025	1.0
Residual Fuel Oil	-	W	W	W	-	W	W	W	NA
Sulfur Content <= 1 %	-	-	W	W	-	W	W	W	NA
Sulfur Content > 1 %	-	W	-	-	-	-	-	W	NA

See footnotes at end of table.

Prime Supplier Sales Volumes of Petroleum Products by Grade, PAD District, and State

(Thousand Gallons) — Continued

Geographic Area Products	January 2008	February 2008	March 2008	April 2008	May 2008	June 2008	Cumulative Year To Date 2007	Cumulative Year To Date 2008	Adjusted Year To Date % Change ¹
Nebraska									
Motor Gasoline	60,117	57,960	59,091	60,486	63,701	63,933	388,022	365,288	-6.4
Regular	33,420	31,260	32,009	32,532	35,148	35,708	237,081	200,077	-16.1
Conventional	33,420	31,260	32,009	32,532	35,148	35,708	237,081	200,077	-16.1
Reformulated	-	-	-	-	-	-	-	-	-
Midgrade	24,729	24,810	24,968	25,946	26,483	26,211	136,823	153,147	11.3
Conventional	24,729	24,810	24,968	25,946	26,483	26,211	136,823	153,147	11.3
Reformulated	-	-	-	-	-	-	-	-	-
Premium	1,968	1,890	2,114	2,008	2,070	2,014	14,118	12,064	-15.0
Conventional	1,968	1,890	2,114	2,008	2,070	2,014	14,118	12,064	-15.0
Reformulated	-	-	-	-	-	-	-	-	-
Total Distillate	W	W	W	W	W	W	W	W	W
No. 1 Distillate	W	W	W	W	W	27	W	W	NA
No. 2 Distillate	43,341	33,689	46,712	50,146	W	54,125	W	W	NA
No. 2 Fuel Oil	-	-	-	-	-	-	W	-	NA
No. 2 Diesel Fuel	NA	NA	NA	NA	NA	NA	NA	NA	NA
Ultra Low Sulfur	34,361	W	36,669	42,889	43,810	42,263	238,704	W	NA
Low Sulfur	8,980	W	10,043	7,257	W	11,862	W	W	NA
High Sulfur	-	-	-	-	-	-	W	-	NA
No. 4 Fuel	-	-	-	-	-	-	-	-	-
Aviation Gasoline	W	66	81	W	139	159	W	W	NA
Kerosene-Type Jet Fuel	2,811	2,618	W	2,610	2,854	W	18,501	W	NA
Kerosene	W	W	W	W	-	-	W	W	NA
Propane	19,189	16,273	8,493	4,654	5,274	2,697	52,613	56,580	6.9
Residual Fuel Oil	-	-	-	-	-	-	W	-	NA
Sulfur Content <= 1 %	-	-	-	-	-	-	W	-	NA
Sulfur Content > 1 %	-	-	-	-	-	-	W	-	NA
North Dakota									
Motor Gasoline	25,288	24,791	25,021	27,523	28,830	26,704	161,786	158,157	-2.8
Regular	17,758	17,890	17,758	19,925	21,242	19,140	126,679	113,713	-10.7
Conventional	17,758	17,890	17,758	19,925	21,242	19,140	126,679	113,713	-10.7
Reformulated	-	-	-	-	-	-	-	-	-
Midgrade	6,877	6,217	6,655	6,935	6,775	6,794	29,564	40,253	35.4
Conventional	6,877	6,217	6,655	6,935	6,775	6,794	29,564	40,253	35.4
Reformulated	-	-	-	-	-	-	-	-	-
Premium	653	684	608	663	813	770	5,543	4,191	-24.8
Conventional	653	684	608	663	813	770	5,543	4,191	-24.8
Reformulated	-	-	-	-	-	-	-	-	-
Total Distillate	W	W	W	W	W	W	W	W	W
No. 1 Distillate	3,113	W	W	W	W	W	W	W	NA
No. 2 Distillate	32,017	30,633	37,329	38,463	38,993	32,488	199,345	209,923	4.7
No. 2 Fuel Oil	W	W	W	W	W	W	W	W	NA
No. 2 Diesel Fuel	NA	NA	NA	NA	NA	NA	NA	NA	NA
Ultra Low Sulfur	W	24,489	W	31,431	32,527	26,238	154,698	W	NA
Low Sulfur	W	W	W	W	W	W	W	W	NA
High Sulfur	W	-	-	-	-	-	W	W	NA
No. 4 Fuel	-	-	-	-	-	-	-	-	-
Aviation Gasoline	87	94	171	198	142	255	977	947	-3.6
Kerosene-Type Jet Fuel	1,878	1,800	1,957	2,638	2,174	2,372	W	12,819	NA
Kerosene	31	W	W	W	W	W	W	W	NA
Propane	11,921	11,280	5,815	3,737	4,331	4,128	39,557	41,212	3.6
Residual Fuel Oil	-	-	-	-	W	W	W	W	NA
Sulfur Content <= 1 %	-	-	-	-	-	-	-	-	-
Sulfur Content > 1 %	-	-	-	-	W	W	W	W	NA

See footnotes at end of table.

Prime Supplier Sales Volumes of Petroleum Products by Grade, PAD District, and State

(Thousand Gallons) — Continued

Geographic Area Products	January 2008	February 2008	March 2008	April 2008	May 2008	June 2008	Cumulative Year To Date 2007	Cumulative Year To Date 2008	Adjusted Year To Date % Change ¹
Ohio									
Motor Gasoline	403,626	380,927	401,208	412,679	428,171	411,232	2,490,991	2,437,843	-2.7
Regular	372,297	349,824	369,517	382,130	395,977	380,875	2,279,522	2,250,620	-1.8
Conventional	372,297	349,824	369,517	382,130	395,977	380,875	2,279,522	2,250,620	-1.8
Reformulated	-	-	-	-	-	-	-	-	-
Midgrade	11,814	13,112	13,505	10,606	12,149	11,256	77,539	72,442	-7.1
Conventional	11,814	13,112	13,505	10,606	12,149	11,256	77,539	72,442	-7.1
Reformulated	-	-	-	-	-	-	-	-	-
Premium	19,515	17,991	18,186	19,943	20,045	19,101	133,930	114,781	-14.8
Conventional	19,515	17,991	18,186	19,943	20,045	19,101	133,930	114,781	-14.8
Reformulated	-	-	-	-	-	-	-	-	-
Total Distillate	W	W	W	W	W	W	W	W	W
No. 1 Distillate	1,273	1,083	556	113	W	W	W	W	NA
No. 2 Distillate	185,973	162,638	170,994	172,886	173,112	168,247	931,091	1,033,850	10.4
No. 2 Fuel Oil	W	12,106	W	W	W	W	14,191	W	NA
No. 2 Diesel Fuel	NA	NA	NA	NA	NA	NA	NA	NA	NA
Ultra Low Sulfur	127,134	112,752	118,645	119,703	122,309	116,248	533,699	716,791	33.6
Low Sulfur	W	37,780	W	W	W	W	W	W	NA
High Sulfur	-	-	-	-	-	-	W	-	NA
No. 4 Fuel	-	-	-	-	-	-	-	-	-
Aviation Gasoline	336	720	W	NA	W	W	W	W	NA
Kerosene-Type Jet Fuel	52,309	51,190	52,370	67,020	58,130	58,490	327,174	339,509	3.2
Kerosene	2,517	2,055	1,213	283	W	W	W	W	NA
Propane	44,880	43,541	33,005	14,863	9,867	9,799	164,797	155,955	-5.9
Residual Fuel Oil	3,493	3,787	5,000	6,608	6,466	5,597	19,797	30,951	55.5
Sulfur Content <= 1 %	W	W	W	W	W	W	W	W	NA
Sulfur Content > 1 %	W	W	W	W	W	W	W	W	NA
Oklahoma									
Motor Gasoline	171,661	167,299	207,464	202,958	155,516	160,458	968,545	1,065,356	9.4
Regular	161,156	158,009	197,528	193,789	146,575	151,800	900,634	1,008,857	11.4
Conventional	161,156	158,009	197,528	193,789	146,575	151,800	900,634	1,008,857	11.4
Reformulated	-	-	-	-	-	-	-	-	-
Midgrade	2,158	2,146	2,574	2,540	2,334	2,114	12,219	13,866	12.9
Conventional	2,158	2,146	2,574	2,540	2,334	2,114	12,219	13,866	12.9
Reformulated	-	-	-	-	-	-	-	-	-
Premium	8,347	7,144	7,362	6,629	6,607	6,544	55,692	42,633	-23.9
Conventional	8,347	7,144	7,362	6,629	6,607	6,544	55,692	42,633	-23.9
Reformulated	-	-	-	-	-	-	-	-	-
Total Distillate	W	W	W	W	W	W	W	W	W
No. 1 Distillate	W	W	W	W	W	W	W	W	NA
No. 2 Distillate	143,087	-	W	166,457	W	155,490	W	W	NA
No. 2 Fuel Oil	-	-	-	-	-	-	W	-	NA
No. 2 Diesel Fuel	NA	NA	NA	NA	NA	NA	NA	NA	NA
Ultra Low Sulfur	119,771	W	128,916	139,535	134,785	124,187	607,232	W	NA
Low Sulfur	23,316	32,320	W	26,922	W	31,303	W	W	NA
High Sulfur	-	-	-	-	-	-	W	-	NA
No. 4 Fuel	-	-	-	-	-	-	W	-	NA
Aviation Gasoline	159	156	211	176	245	233	1,204	1,180	-2.5
Kerosene-Type Jet Fuel	15,479	16,429	18,129	17,730	14,954	18,316	103,111	101,037	-2.5
Kerosene	W	W	W	W	W	W	W	W	NA
Propane	21,987	16,581	12,685	7,454	6,000	5,584	79,151	70,291	-11.7
Residual Fuel Oil	W	W	W	-	W	W	W	W	NA
Sulfur Content <= 1 %	-	W	-	-	W	-	W	W	NA
Sulfur Content > 1 %	W	W	W	-	W	W	W	W	NA

See footnotes at end of table.

Prime Supplier Sales Volumes of Petroleum Products by Grade, PAD District, and State

(Thousand Gallons) — Continued

Geographic Area Products	January 2008	February 2008	March 2008	April 2008	May 2008	June 2008	Cumulative Year To Date 2007	Cumulative Year To Date 2008	Adjusted Year To Date % Change ¹
South Dakota									
Motor Gasoline	30,633	30,506	31,354	32,846	35,134	36,556	206,659	197,029	-5.2
Regular	21,255	22,262	22,947	24,478	26,030	27,837	156,327	144,809	-7.9
Conventional	21,255	22,262	22,947	24,478	26,030	27,837	156,327	144,809	-7.9
Reformulated	-	-	-	-	-	-	-	-	-
Midgrade	8,424	7,288	7,513	7,473	8,049	7,494	42,233	46,241	8.9
Conventional	8,424	7,288	7,513	7,473	8,049	7,494	42,233	46,241	8.9
Reformulated	-	-	-	-	-	-	-	-	-
Premium	954	956	894	895	1,055	1,225	8,099	5,979	-26.6
Conventional	954	956	894	895	1,055	1,225	8,099	5,979	-26.6
Reformulated	-	-	-	-	-	-	-	-	-
Total Distillate	W	W	W	W	W	W	W	W	W
No. 1 Distillate	3,224	2,557	W	22	W	40	W	W	NA
No. 2 Distillate	20,796	W	W	26,218	28,417	26,174	W	W	NA
No. 2 Fuel Oil	-	-	-	W	W	W	W	W	NA
No. 2 Diesel Fuel	NA	NA	NA	NA	NA	NA	NA	NA	NA
Ultra Low Sulfur	W	19,675	21,074	24,997	W	24,017	141,797	W	NA
Low Sulfur	W	W	W	W	W	W	W	W	NA
High Sulfur	-	-	-	-	-	-	W	-	NA
No. 4 Fuel	-	-	-	-	-	-	-	-	-
Aviation Gasoline	41	89	78	113	169	140	W	630	NA
Kerosene-Type Jet Fuel	1,949	1,570	W	2,659	1,795	2,452	12,133	W	NA
Kerosene	-	W	W	-	W	-	W	W	NA
Propane	14,104	13,747	5,990	3,622	2,637	2,319	55,992	42,419	-24.7
Residual Fuel Oil	-	-	-	W	W	W	W	W	NA
Sulfur Content <= 1 %	-	-	-	-	-	-	-	-	-
Sulfur Content > 1 %	-	-	-	W	W	W	W	W	NA
Tennessee									
Motor Gasoline	246,370	234,093	246,952	253,967	256,385	258,687	1,557,930	1,496,454	-4.5
Regular	216,611	206,633	220,967	228,038	224,423	226,096	1,332,503	1,322,768	-1.3
Conventional	216,611	206,633	220,967	228,038	224,423	226,096	1,332,503	1,322,768	-1.3
Reformulated	-	-	-	-	-	-	-	-	-
Midgrade	9,697	8,709	8,234	7,702	7,185	7,340	69,816	48,867	-30.4
Conventional	9,697	8,709	8,234	7,702	7,185	7,340	69,816	48,867	-30.4
Reformulated	-	-	-	-	-	-	-	-	-
Premium	20,062	18,751	17,751	18,227	24,777	25,251	155,611	124,819	-20.2
Conventional	20,062	18,751	17,751	18,227	24,777	25,251	155,611	124,819	-20.2
Reformulated	-	-	-	-	-	-	-	-	-
Total Distillate	W	W	W	W	W	W	W	W	W
No. 1 Distillate	-	-	-	-	-	-	W	-	NA
No. 2 Distillate	115,553	112,774	121,602	120,922	124,902	126,593	W	722,346	NA
No. 2 Fuel Oil	W	W	W	W	W	W	37,846	W	NA
No. 2 Diesel Fuel	NA	NA	NA	NA	NA	NA	NA	NA	NA
Ultra Low Sulfur	73,820	70,933	77,201	78,992	81,214	85,311	380,388	467,471	22.2
Low Sulfur	35,524	34,533	35,073	35,372	35,025	32,660	164,639	208,187	25.8
High Sulfur	W	W	W	W	W	W	W	W	NA
No. 4 Fuel	-	-	-	-	-	-	-	-	-
Aviation Gasoline	279	174	380	371	366	472	2,322	2,042	-12.5
Kerosene-Type Jet Fuel	39,316	39,161	40,890	38,425	40,792	40,152	249,881	238,736	-5.0
Kerosene	2,049	984	321	24	39	28	W	3,445	NA
Propane	22,656	19,467	15,764	11,742	11,322	11,315	94,433	92,266	-2.8
Residual Fuel Oil	W	W	W	485	W	W	W	W	NA
Sulfur Content <= 1 %	-	-	-	W	-	-	W	W	NA
Sulfur Content > 1 %	W	W	W	W	W	W	W	W	NA

See footnotes at end of table.

Prime Supplier Sales Volumes of Petroleum Products by Grade, PAD District, and State

(Thousand Gallons) — Continued

Geographic Area Products	January 2008	February 2008	March 2008	April 2008	May 2008	June 2008	Cumulative Year To Date 2007	Cumulative Year To Date 2008	Adjusted Year To Date % Change ¹
Wisconsin									
Motor Gasoline	186,441	184,477	185,394	191,894	210,171	202,566	1,185,604	1,160,943	-2.6
Regular	145,237	141,974	143,480	146,466	164,394	155,212	1,042,149	896,763	-14.4
Conventional	94,159	93,604	96,525	95,501	112,936	104,495	751,031	597,220	-20.9
Reformulated	51,078	48,370	46,955	50,965	51,458	50,717	291,118	299,543	2.3
Midgrade	32,287	33,216	33,538	36,652	35,737	37,491	84,119	208,921	147.0
Conventional	31,102	32,076	32,402	35,433	34,629	36,445	76,616	202,087	162.3
Reformulated	1,185	1,140	1,136	1,219	1,108	1,046	7,503	6,834	-9.4
Premium	8,917	9,287	8,376	8,776	10,040	9,863	59,336	55,259	-7.4
Conventional	5,376	5,826	4,995	4,829	6,242	6,128	38,501	33,396	-13.7
Reformulated	3,541	3,461	3,381	3,947	3,798	3,735	20,835	21,863	4.4
Total Distillate	W	W	W	W	W	W	W	W	W
No. 1 Distillate	4,835	4,615	1,163	180	110	W	W	W	NA
No. 2 Distillate	82,755	81,568	78,236	84,775	97,823	89,234	502,659	514,391	1.8
No. 2 Fuel Oil	W	371	424	229	478	326	5,544	W	NA
No. 2 Diesel Fuel	NA	NA	NA	NA	NA	NA	NA	NA	NA
Ultra Low Sulfur	70,238	70,754	67,668	71,295	81,492	74,421	400,681	435,868	8.2
Low Sulfur	10,798	W	W	W	W	W	85,024	W	NA
High Sulfur	W	W	W	W	W	W	W	W	NA
No. 4 Fuel	-	-	-	-	-	-	-	-	-
Aviation Gasoline	131	128	205	191	316	270	1,391	1,241	-11.3
Kerosene-Type Jet Fuel	6,101	5,922	6,517	6,742	7,291	9,316	40,937	41,889	1.8
Kerosene	251	285	100	61	35	W	W	W	NA
Propane	43,600	40,460	27,853	16,793	11,390	9,782	160,920	149,878	-7.4
Residual Fuel Oil	3,826	W	W	W	W	W	W	W	NA
Sulfur Content <= 1 %	-	-	W	W	-	W	W	W	NA
Sulfur Content > 1 %	3,826	W	W	W	W	W	W	W	NA
PAD District III									
Motor Gasoline	1,741,164	1,706,682	1,861,426	1,836,087	1,863,500	1,792,654	10,652,920	10,801,513	0.8
Regular	1,565,666	1,531,967	1,681,194	1,663,447	1,699,053	1,640,705	9,479,871	9,782,032	2.6
Conventional	1,211,695	1,180,026	1,307,165	1,284,264	1,301,978	1,251,899	7,465,298	7,537,027	0.4
Reformulated	353,971	351,941	374,029	379,183	397,075	388,806	2,014,573	2,245,005	10.8
Midgrade	52,725	52,432	52,577	48,104	48,641	45,552	350,755	300,031	-14.9
Conventional	36,893	36,552	37,211	33,937	34,301	32,502	248,104	211,396	-15.3
Reformulated	15,832	15,880	15,366	14,167	14,340	13,050	102,651	88,635	-14.1
Premium	122,773	122,283	127,655	124,536	115,806	106,397	822,294	719,450	-13.0
Conventional	86,288	85,441	91,235	88,973	79,951	74,804	594,104	506,692	-15.2
Reformulated	36,485	36,842	36,420	35,563	35,855	31,593	228,190	212,758	-7.3
Total Distillate	W	W	W	W	W	W	W	W	W
No. 1 Distillate	W	W	W	W	-	W	W	W	NA
No. 2 Distillate	1,042,575	975,654	1,027,156	1,153,946	1,086,873	994,934	6,069,296	6,281,138	2.9
No. 2 Fuel Oil	27,323	20,081	14,233	9,219	10,467	11,316	189,830	92,639	-51.5
No. 2 Diesel Fuel	NA	NA	NA	NA	NA	NA	NA	NA	NA
Ultra Low Sulfur	749,416	724,716	762,108	863,645	815,476	733,828	3,794,185	4,649,189	21.9
Low Sulfur	199,272	173,957	192,418	205,503	220,416	210,354	1,053,511	1,201,920	13.5
High Sulfur	66,564	56,900	58,397	75,579	40,514	39,436	1,031,770	337,390	-67.5
No. 4 Fuel	W	W	W	W	W	W	W	W	NA
Aviation Gasoline	2,178	2,655	2,681	2,599	2,834	2,986	16,160	15,933	-1.9
Kerosene-Type Jet Fuel	318,677	290,319	308,198	292,309	299,415	343,317	1,958,891	1,852,235	-6.0
Kerosene	1,763	855	585	431	W	460	W	W	NA
Propane	619,339	468,065	490,273	417,998	440,832	430,637	3,032,571	2,867,144	-6.0
Residual Fuel Oil	109,922	92,808	111,066	102,468	81,606	100,218	598,097	598,088	-0.6
Sulfur Content <= 1 %	18,601	17,727	19,190	17,948	18,332	18,206	W	110,004	NA
Sulfur Content > 1 %	91,321	75,081	91,876	84,520	63,274	82,012	W	488,084	NA

See footnotes at end of table.

Prime Supplier Sales Volumes of Petroleum Products by Grade, PAD District, and State

(Thousand Gallons) — Continued

Geographic Area Products	January 2008	February 2008	March 2008	April 2008	May 2008	June 2008	Cumulative Year To Date 2007	Cumulative Year To Date 2008	Adjusted Year To Date % Change ¹
Alabama									
Motor Gasoline	185,721	182,994	194,931	193,653	192,950	187,708	1,181,148	1,137,957	-4.2
Regular	166,158	164,074	175,865	175,112	175,626	171,679	1,035,905	1,028,514	-1.3
Conventional	166,158	164,074	175,865	175,112	175,626	171,679	1,035,905	1,028,514	-1.3
Reformulated	-	-	-	-	-	-	-	-	-
Midgrade	5,683	5,270	5,458	5,361	5,134	4,853	44,802	31,759	-29.5
Conventional	5,683	5,270	5,458	5,361	5,134	4,853	44,802	31,759	-29.5
Reformulated	-	-	-	-	-	-	-	-	-
Premium	13,880	13,650	13,608	13,180	12,190	11,176	100,441	77,684	-23.1
Conventional	13,880	13,650	13,608	13,180	12,190	11,176	100,441	77,684	-23.1
Reformulated	-	-	-	-	-	-	-	-	-
Total Distillate	W	W	W	W	W	W	W	W	W
No. 1 Distillate	-	-	-	-	-	-	W	-	NA
No. 2 Distillate	80,235	W	W	W	W	W	484,180	W	NA
No. 2 Fuel Oil	W	W	W	W	W	W	W	W	NA
No. 2 Diesel Fuel	NA	NA	NA	NA	NA	NA	NA	NA	NA
Ultra Low Sulfur	56,183	52,713	57,181	58,867	60,325	58,666	308,639	343,935	10.8
Low Sulfur	19,901	19,026	W	22,040	20,471	16,678	W	W	NA
High Sulfur	W	W	W	W	W	W	W	W	NA
No. 4 Fuel	-	-	-	-	-	-	-	-	-
Aviation Gasoline	166	204	254	259	176	168	1,211	1,227	0.8
Kerosene-Type Jet Fuel	7,103	6,873	7,112	7,152	7,045	7,244	41,285	42,529	2.4
Kerosene	641	W	W	W	W	W	W	W	NA
Propane	19,482	13,497	9,291	5,475	4,603	4,083	57,889	56,431	-3.1
Residual Fuel Oil	W	W	W	W	W	W	W	W	NA
Sulfur Content <= 1 %	W	W	W	W	W	W	W	W	NA
Sulfur Content > 1 %	W	W	W	W	W	W	W	W	NA
Arkansas									
Motor Gasoline	113,434	112,139	114,376	111,535	120,108	115,220	695,246	686,812	-1.8
Regular	103,651	102,292	104,609	102,976	110,804	105,681	635,212	630,013	-1.4
Conventional	103,651	102,292	104,609	102,976	110,804	105,681	635,212	630,013	-1.4
Reformulated	-	-	-	-	-	-	-	-	-
Midgrade	3,926	4,212	4,236	3,232	3,945	4,622	14,335	24,173	67.7
Conventional	3,926	4,212	4,236	3,232	3,945	4,622	14,335	24,173	67.7
Reformulated	-	-	-	-	-	-	-	-	-
Premium	5,857	5,635	5,531	5,327	5,359	4,917	45,699	32,626	-29.0
Conventional	5,857	5,635	5,531	5,327	5,359	4,917	45,699	32,626	-29.0
Reformulated	-	-	-	-	-	-	-	-	-
Total Distillate	W	W	W	W	W	W	W	W	W
No. 1 Distillate	-	W	-	-	-	-	W	W	NA
No. 2 Distillate	W	68,232	75,973	W	W	91,395	W	W	NA
No. 2 Fuel Oil	-	-	W	W	-	W	W	W	NA
No. 2 Diesel Fuel	NA	NA	NA	NA	NA	NA	NA	NA	NA
Ultra Low Sulfur	54,792	50,626	53,503	57,530	58,044	63,986	271,788	338,481	23.9
Low Sulfur	20,068	W	22,411	W	24,296	27,382	125,091	W	NA
High Sulfur	W	W	W	W	W	W	W	W	NA
No. 4 Fuel	-	-	-	-	-	-	-	-	-
Aviation Gasoline	91	92	113	200	101	W	W	W	NA
Kerosene-Type Jet Fuel	3,266	3,539	3,782	3,754	3,794	4,825	22,506	22,960	1.5
Kerosene	W	W	-	W	W	-	W	W	NA
Propane	17,814	12,872	9,016	5,284	4,389	3,311	57,106	52,686	-8.2
Residual Fuel Oil	W	W	W	-	-	-	W	W	NA
Sulfur Content <= 1 %	W	W	W	-	-	-	W	W	NA
Sulfur Content > 1 %	-	-	-	-	-	-	-	-	-

See footnotes at end of table.

Prime Supplier Sales Volumes of Petroleum Products by Grade, PAD District, and State

(Thousand Gallons) — Continued

Geographic Area Products	January 2008	February 2008	March 2008	April 2008	May 2008	June 2008	Cumulative Year To Date 2007	Cumulative Year To Date 2008	Adjusted Year To Date % Change ¹
Louisiana									
Motor Gasoline	205,097	193,038	218,041	213,574	197,438	193,548	1,176,771	1,220,736	3.2
Regular	185,660	174,409	198,068	194,096	178,167	176,381	1,046,237	1,106,781	5.2
Conventional	185,660	174,409	198,068	194,096	178,167	176,381	1,046,237	1,106,781	5.2
Reformulated	-	-	-	-	-	-	-	-	-
Midgrade	5,540	5,579	5,447	4,949	4,868	4,364	40,373	30,747	-24.3
Conventional	5,540	5,579	5,447	4,949	4,868	4,364	40,373	30,747	-24.3
Reformulated	-	-	-	-	-	-	-	-	-
Premium	13,897	13,050	14,526	14,529	14,403	12,803	90,161	83,208	-8.2
Conventional	13,897	13,050	14,526	14,529	14,403	12,803	90,161	83,208	-8.2
Reformulated	-	-	-	-	-	-	-	-	-
Total Distillate	W	W	W	W	W	W	W	W	W
No. 1 Distillate	-	-	-	-	-	-	-	-	-
No. 2 Distillate	194,181	164,940	169,397	185,380	156,935	150,419	W	1,021,252	NA
No. 2 Fuel Oil	14,316	W	W	W	W	W	W	W	NA
No. 2 Diesel Fuel	NA	NA	NA	NA	NA	NA	NA	NA	NA
Ultra Low Sulfur	71,443	69,058	68,233	68,381	73,301	73,797	335,585	424,213	25.7
Low Sulfur	66,880	55,476	W	63,747	65,634	W	W	W	NA
High Sulfur	41,542	W	33,943	W	W	14,475	W	W	NA
No. 4 Fuel	-	-	-	-	-	-	W	-	NA
Aviation Gasoline	227	330	292	350	503	813	1,342	2,515	86.4
Kerosene-Type Jet Fuel	67,949	62,635	54,635	61,762	67,272	62,690	413,634	376,943	-9.4
Kerosene	176	75	71	108	57	112	W	599	NA
Propane	48,429	48,957	48,614	65,554	44,886	42,685	273,937	299,125	8.6
Residual Fuel Oil	16,095	20,021	24,112	13,645	7,753	30,139	104,570	111,765	6.3
Sulfur Content <= 1 %	W	W	W	W	W	W	W	W	NA
Sulfur Content > 1 %	W	W	W	W	W	W	W	W	NA
Mississippi									
Motor Gasoline	130,487	130,529	137,251	134,723	140,822	142,275	866,343	816,087	-6.3
Regular	117,715	117,601	124,233	120,680	129,207	129,352	766,385	738,788	-4.1
Conventional	117,715	117,601	124,233	120,680	129,207	129,352	766,385	738,788	-4.1
Reformulated	-	-	-	-	-	-	-	-	-
Midgrade	4,149	4,044	4,095	3,707	3,655	3,462	30,909	23,112	-25.6
Conventional	4,149	4,044	4,095	3,707	3,655	3,462	30,909	23,112	-25.6
Reformulated	-	-	-	-	-	-	-	-	-
Premium	8,623	8,884	8,923	10,336	7,960	9,461	69,049	54,187	-22.0
Conventional	8,623	8,884	8,923	10,336	7,960	9,461	69,049	54,187	-22.0
Reformulated	-	-	-	-	-	-	-	-	-
Total Distillate	W	W	W	W	W	W	W	W	W
No. 1 Distillate	-	-	-	-	-	-	W	-	NA
No. 2 Distillate	71,753	W	W	W	W	W	W	W	NA
No. 2 Fuel Oil	W	W	W	85	121	W	W	W	NA
No. 2 Diesel Fuel	NA	NA	NA	NA	NA	NA	NA	NA	NA
Ultra Low Sulfur	49,873	48,896	52,796	54,561	51,332	49,479	271,086	306,937	12.6
Low Sulfur	15,968	23,882	28,288	28,850	W	W	117,154	W	NA
High Sulfur	W	W	W	W	W	W	W	W	NA
No. 4 Fuel	-	-	-	-	-	-	-	-	-
Aviation Gasoline	114	178	126	129	144	W	W	W	NA
Kerosene-Type Jet Fuel	6,258	10,863	22,665	8,988	11,712	7,373	89,919	67,859	-24.9
Kerosene	238	W	W	W	W	W	W	W	NA
Propane	26,860	21,186	13,716	8,365	9,359	8,487	115,347	87,973	-24.2
Residual Fuel Oil	-	-	-	W	-	-	W	W	NA
Sulfur Content <= 1 %	-	-	-	-	-	-	-	-	-
Sulfur Content > 1 %	-	-	-	W	-	-	W	W	NA

See footnotes at end of table.

Prime Supplier Sales Volumes of Petroleum Products by Grade, PAD District, and State

(Thousand Gallons) — Continued

Geographic Area Products	January 2008	February 2008	March 2008	April 2008	May 2008	June 2008	Cumulative Year To Date 2007	Cumulative Year To Date 2008	Adjusted Year To Date % Change ¹
New Mexico									
Motor Gasoline	77,239	73,398	86,768	79,294	80,176	76,728	457,186	473,603	3.0
Regular	68,027	65,029	77,204	70,914	72,143	69,229	401,476	422,546	4.7
Conventional	68,027	65,029	77,204	70,914	72,143	69,229	401,476	422,546	4.7
Reformulated	-	-	-	-	-	-	-	-	-
Midgrade	2,074	1,993	2,167	1,919	1,815	1,720	14,590	11,688	-20.3
Conventional	2,074	1,993	2,167	1,919	1,815	1,720	14,590	11,688	-20.3
Reformulated	-	-	-	-	-	-	-	-	-
Premium	7,138	6,376	7,397	6,461	6,218	5,779	41,120	39,369	-4.8
Conventional	7,138	6,376	7,397	6,461	6,218	5,779	41,120	39,369	-4.8
Reformulated	-	-	-	-	-	-	-	-	-
Total Distillate	W	W	W	W	W	W	W	W	W
No. 1 Distillate	W	W	W	W	-	W	W	W	NA
No. 2 Distillate	W	46,582	W	W	48,424	W	W	W	NA
No. 2 Fuel Oil	-	-	-	-	-	-	W	-	NA
No. 2 Diesel Fuel	NA	NA	NA	NA	NA	NA	NA	NA	NA
Ultra Low Sulfur	42,426	41,723	43,146	43,147	43,009	44,490	224,325	257,941	14.4
Low Sulfur	W	4,859	W	W	5,415	W	W	W	NA
High Sulfur	-	-	-	-	-	-	W	-	NA
No. 4 Fuel	-	-	-	-	-	-	-	-	-
Aviation Gasoline	146	135	143	269	188	285	1,363	1,166	-14.9
Kerosene-Type Jet Fuel	4,875	5,258	5,313	5,111	5,627	6,812	36,189	32,996	-9.3
Kerosene	W	W	-	-	-	-	W	W	NA
Propane	16,246	11,028	9,054	7,242	5,448	5,103	74,195	54,121	-27.5
Residual Fuel Oil	W	W	W	W	W	W	W	W	NA
Sulfur Content <= 1 %	W	W	W	W	W	W	W	W	NA
Sulfur Content > 1 %	W	W	W	W	W	W	W	W	NA
Texas									
Motor Gasoline	1,029,186	1,014,584	1,110,059	1,103,308	1,132,006	1,077,175	6,276,226	6,466,318	2.5
Regular	924,455	908,562	1,001,215	999,669	1,033,106	988,383	5,594,656	5,855,390	4.1
Conventional	570,484	556,621	627,186	620,486	636,031	599,577	3,580,083	3,610,385	0.3
Reformulated	353,971	351,941	374,029	379,183	397,075	388,806	2,014,573	2,245,005	10.8
Midgrade	31,353	31,334	31,174	28,936	29,224	26,531	205,746	178,552	-13.7
Conventional	15,521	15,454	15,808	14,769	14,884	13,481	103,095	89,917	-13.3
Reformulated	15,832	15,880	15,366	14,167	14,340	13,050	102,651	88,635	-14.1
Premium	73,378	74,688	77,670	74,703	69,676	62,261	475,824	432,376	-9.6
Conventional	36,893	37,846	41,250	39,140	33,821	30,668	247,634	219,618	-11.8
Reformulated	36,485	36,842	36,420	35,563	35,855	31,593	228,190	212,758	-7.3
Total Distillate	W	W	W	W	W	W	W	W	W
No. 1 Distillate	-	-	-	-	-	-	-	-	-
No. 2 Distillate	573,051	543,792	567,796	669,230	634,622	544,924	3,260,408	3,533,415	7.8
No. 2 Fuel Oil	7,443	8,305	7,318	W	3,049	5,784	W	W	NA
No. 2 Diesel Fuel	NA	NA	NA	NA	NA	NA	NA	NA	NA
Ultra Low Sulfur	474,699	461,700	487,249	581,159	529,465	443,410	2,382,762	2,977,682	24.3
Low Sulfur	W	W	W	64,914	W	W	554,932	W	NA
High Sulfur	W	W	W	W	W	W	W	W	NA
No. 4 Fuel	W	W	W	W	W	W	W	W	NA
Aviation Gasoline	1,434	1,716	1,753	1,392	1,722	1,456	10,187	9,473	-7.5
Kerosene-Type Jet Fuel	229,226	201,151	214,691	205,542	203,965	254,373	1,355,358	1,308,948	-4.0
Kerosene	W	W	W	W	W	W	W	W	NA
Propane	490,508	360,525	400,582	326,078	372,147	366,968	2,454,097	2,316,808	-6.1
Residual Fuel Oil	91,157	69,688	82,391	83,196	70,565	66,350	465,881	463,347	-1.1
Sulfur Content <= 1 %	W	W	W	W	W	W	W	W	NA
Sulfur Content > 1 %	W	W	W	W	W	W	W	W	NA

See footnotes at end of table.

Prime Supplier Sales Volumes of Petroleum Products by Grade, PAD District, and State

(Thousand Gallons) — Continued

Geographic Area Products	January 2008	February 2008	March 2008	April 2008	May 2008	June 2008	Cumulative Year To Date 2007	Cumulative Year To Date 2008	Adjusted Year To Date % Change ¹
PAD District IV									
Motor Gasoline	379,062	363,670	390,158	391,061	411,184	390,691	2,387,613	2,325,826	-3.1
Regular	315,231	303,671	326,886	330,741	351,448	334,935	1,983,900	1,962,912	-1.6
Conventional	315,231	303,671	326,886	330,741	351,448	334,935	1,983,900	1,962,912	-1.6
Reformulated	-	-	-	-	-	-	-	-	-
Midgrade	19,384	18,053	19,187	17,738	17,845	16,014	120,197	108,221	-10.5
Conventional	19,384	18,053	19,187	17,738	17,845	16,014	120,197	108,221	-10.5
Reformulated	-	-	-	-	-	-	-	-	-
Premium	44,447	41,946	44,085	42,582	41,891	39,742	283,516	254,693	-10.7
Conventional	44,447	41,946	44,085	42,582	41,891	39,742	283,516	254,693	-10.7
Reformulated	-	-	-	-	-	-	-	-	-
Total Distillate	W	W	W	W	W	W	W	W	W
No. 1 Distillate	W	W	W	W	374	W	W	W	NA
No. 2 Distillate	229,220	230,198	241,189	250,673	247,222	246,220	1,461,670	1,444,722	-1.7
No. 2 Fuel Oil	W	W	W	W	W	W	W	W	NA
No. 2 Diesel Fuel	NA	NA	NA	NA	NA	NA	NA	NA	NA
Ultra Low Sulfur	195,269	195,764	206,579	214,974	212,563	212,913	1,151,433	1,238,062	6.9
Low Sulfur	33,048	33,367	34,072	34,979	33,747	32,651	236,864	W	NA
High Sulfur	W	W	W	W	W	W	W	W	NA
No. 4 Fuel	-	-	-	-	-	-	W	W	NA
Aviation Gasoline	500	565	815	733	840	995	5,145	4,448	-14.0
Kerosene-Type Jet Fuel	68,214	64,721	70,747	67,956	79,106	74,054	405,049	424,798	4.3
Kerosene	W	W	W	W	W	W	W	W	NA
Propane	72,970	56,692	43,876	38,849	34,665	30,400	275,981	277,452	0.0
Residual Fuel Oil	2,608	2,890	2,795	3,227	2,232	1,992	14,483	15,744	8.1
Sulfur Content <= 1 %	W	W	W	W	W	W	W	W	NA
Sulfur Content > 1 %	W	W	W	W	W	W	W	W	NA
Colorado									
Motor Gasoline	172,409	161,904	169,795	170,719	176,086	162,437	1,020,700	1,013,350	-1.3
Regular	140,737	133,501	139,337	142,131	148,144	136,629	833,122	840,479	0.3
Conventional	140,737	133,501	139,337	142,131	148,144	136,629	833,122	840,479	0.3
Reformulated	-	-	-	-	-	-	-	-	-
Midgrade	12,000	11,204	12,009	10,758	10,513	9,676	71,374	66,160	-7.8
Conventional	12,000	11,204	12,009	10,758	10,513	9,676	71,374	66,160	-7.8
Reformulated	-	-	-	-	-	-	-	-	-
Premium	19,672	17,199	18,449	17,830	17,429	16,132	116,204	106,711	-8.7
Conventional	19,672	17,199	18,449	17,830	17,429	16,132	116,204	106,711	-8.7
Reformulated	-	-	-	-	-	-	-	-	-
Total Distillate	W	W	W	W	W	W	W	W	W
No. 1 Distillate	5,556	W	W	W	W	W	W	W	NA
No. 2 Distillate	63,361	60,538	65,989	71,024	69,426	72,929	W	403,267	NA
No. 2 Fuel Oil	-	-	-	-	-	-	W	-	NA
No. 2 Diesel Fuel	NA	NA	NA	NA	NA	NA	NA	NA	NA
Ultra Low Sulfur	57,109	W	57,355	62,712	W	W	324,485	W	NA
Low Sulfur	6,252	W	8,634	8,312	W	W	W	W	NA
High Sulfur	-	-	-	-	-	-	-	-	-
No. 4 Fuel	-	-	-	-	-	-	W	-	NA
Aviation Gasoline	103	123	162	130	127	248	1,120	893	-20.7
Kerosene-Type Jet Fuel	41,643	39,537	43,673	41,265	54,221	44,143	236,318	264,482	11.3
Kerosene	15	W	W	W	-	W	W	W	NA
Propane	24,470	17,736	15,991	12,177	8,826	7,958	94,081	87,158	-7.9
Residual Fuel Oil	-	-	-	-	-	-	W	-	NA
Sulfur Content <= 1 %	-	-	-	-	-	-	W	-	NA
Sulfur Content > 1 %	-	-	-	-	-	-	-	-	-

See footnotes at end of table.

Prime Supplier Sales Volumes of Petroleum Products by Grade, PAD District, and State

(Thousand Gallons) — Continued

Geographic Area Products	January 2008	February 2008	March 2008	April 2008	May 2008	June 2008	Cumulative Year To Date 2007	Cumulative Year To Date 2008	Adjusted Year To Date % Change ¹
Idaho									
Motor Gasoline	48,897	48,903	52,536	54,002	58,325	55,195	330,617	317,858	-4.4
Regular	43,457	43,564	47,075	48,635	52,690	50,251	291,303	285,672	-2.5
Conventional	43,457	43,564	47,075	48,635	52,690	50,251	291,303	285,672	-2.5
Reformulated	-	-	-	-	-	-	-	-	-
Midgrade	983	755	990	1,045	1,068	657	7,962	5,498	-31.3
Conventional	983	755	990	1,045	1,068	657	7,962	5,498	-31.3
Reformulated	-	-	-	-	-	-	-	-	-
Premium	4,457	4,584	4,471	4,322	4,567	4,287	31,352	26,688	-15.3
Conventional	4,457	4,584	4,471	4,322	4,567	4,287	31,352	26,688	-15.3
Reformulated	-	-	-	-	-	-	-	-	-
Total Distillate	W	W	W	W	W	W	W	W	W
No. 1 Distillate	1,013	432	228	46	21	106	W	1,846	NA
No. 2 Distillate	26,159	29,635	25,065	27,676	27,009	25,699	W	161,243	NA
No. 2 Fuel Oil	W	W	W	W	W	W	W	W	NA
No. 2 Diesel Fuel	NA	NA	NA	NA	NA	NA	NA	NA	NA
Ultra Low Sulfur	22,703	W	21,903	24,376	W	W	146,001	W	NA
Low Sulfur	W	W	W	W	W	W	W	W	NA
High Sulfur	-	-	-	-	-	-	W	-	NA
No. 4 Fuel	-	-	-	-	-	-	-	-	-
Aviation Gasoline	64	67	W	95	92	130	688	W	NA
Kerosene-Type Jet Fuel	2,521	2,521	2,341	2,518	2,807	2,764	14,890	15,472	3.3
Kerosene	-	-	-	-	-	-	-	-	-
Propane	8,105	7,243	4,762	4,264	3,444	2,843	31,450	30,661	-3.0
Residual Fuel Oil	-	-	-	-	-	-	-	-	-
Sulfur Content <= 1 %	-	-	-	-	-	-	-	-	-
Sulfur Content > 1 %	-	-	-	-	-	-	-	-	-
Montana									
Motor Gasoline	46,427	45,167	49,656	48,910	55,820	55,761	309,547	301,741	-3.1
Regular	39,772	38,735	43,176	42,271	48,493	48,793	267,789	261,240	-3.0
Conventional	39,772	38,735	43,176	42,271	48,493	48,793	267,789	261,240	-3.0
Reformulated	-	-	-	-	-	-	-	-	-
Midgrade	2,084	1,905	1,946	1,979	2,476	2,192	10,654	12,582	17.4
Conventional	2,084	1,905	1,946	1,979	2,476	2,192	10,654	12,582	17.4
Reformulated	-	-	-	-	-	-	-	-	-
Premium	4,571	4,527	4,534	4,660	4,851	4,776	31,104	27,919	-10.7
Conventional	4,571	4,527	4,534	4,660	4,851	4,776	31,104	27,919	-10.7
Reformulated	-	-	-	-	-	-	-	-	-
Total Distillate	W	W	W	W	W	W	W	W	W
No. 1 Distillate	W	1,120	322	228	150	139	W	W	NA
No. 2 Distillate	41,339	45,063	47,143	46,419	48,828	48,051	271,462	276,843	1.4
No. 2 Fuel Oil	W	W	W	W	W	W	W	W	NA
No. 2 Diesel Fuel	NA	NA	NA	NA	NA	NA	NA	NA	NA
Ultra Low Sulfur	38,340	40,198	42,739	43,010	45,262	44,473	209,605	254,022	20.5
Low Sulfur	W	W	W	W	W	W	W	W	NA
High Sulfur	-	-	-	-	-	-	W	-	NA
No. 4 Fuel	-	-	-	-	-	-	-	-	-
Aviation Gasoline	W	W	230	148	W	W	W	W	NA
Kerosene-Type Jet Fuel	2,486	2,596	2,542	2,148	2,266	2,952	17,310	14,990	-13.9
Kerosene	W	-	-	-	-	-	W	W	NA
Propane	15,034	11,803	7,367	7,436	7,120	7,351	50,943	56,111	9.5
Residual Fuel Oil	W	W	W	W	W	W	W	W	NA
Sulfur Content <= 1 %	-	-	-	-	-	-	-	-	-
Sulfur Content > 1 %	W	W	W	W	W	W	W	W	NA

See footnotes at end of table.

Prime Supplier Sales Volumes of Petroleum Products by Grade, PAD District, and State

(Thousand Gallons) — Continued

Geographic Area Products	January 2008	February 2008	March 2008	April 2008	May 2008	June 2008	Cumulative Year To Date 2007	Cumulative Year To Date 2008	Adjusted Year To Date % Change ¹
Utah									
Motor Gasoline	86,747	84,060	91,570	90,188	89,694	87,032	555,134	529,291	-5.2
Regular	69,843	67,305	73,834	73,480	74,137	72,443	443,135	431,042	-3.3
Conventional	69,843	67,305	73,834	73,480	74,137	72,443	443,135	431,042	-3.3
Reformulated	-	-	-	-	-	-	-	-	-
Midgrade	4,017	3,912	3,912	3,676	3,479	3,152	27,777	22,148	-20.7
Conventional	4,017	3,912	3,912	3,676	3,479	3,152	27,777	22,148	-20.7
Reformulated	-	-	-	-	-	-	-	-	-
Premium	12,887	12,843	13,824	13,032	12,078	11,437	84,222	76,101	-10.1
Conventional	12,887	12,843	13,824	13,032	12,078	11,437	84,222	76,101	-10.1
Reformulated	-	-	-	-	-	-	-	-	-
Total Distillate	W	W	W	W	W	W	W	W	W
No. 1 Distillate	W	W	W	W	W	W	W	W	NA
No. 2 Distillate	47,981	44,530	43,887	46,309	42,384	44,760	298,123	269,851	-10.0
No. 2 Fuel Oil	-	-	-	-	-	-	W	-	NA
No. 2 Diesel Fuel	NA	NA	NA	NA	NA	NA	NA	NA	NA
Ultra Low Sulfur	38,566	35,313	35,059	36,270	33,726	34,675	232,602	213,609	-8.7
Low Sulfur	W	W	W	W	W	W	W	W	NA
High Sulfur	W	W	W	W	W	W	W	W	NA
No. 4 Fuel	-	-	-	-	-	-	W	-	NA
Aviation Gasoline	255	191	307	340	425	429	2,182	1,947	-11.3
Kerosene-Type Jet Fuel	20,526	18,843	20,982	20,824	18,453	22,984	129,924	122,612	-6.1
Kerosene	W	W	W	W	W	W	W	W	NA
Propane	7,520	5,817	3,732	3,217	2,649	2,350	24,281	25,285	3.6
Residual Fuel Oil	2,111	1,986	1,910	2,728	1,717	1,633	11,363	12,085	5.8
Sulfur Content <= 1 %	W	W	W	W	W	W	W	W	NA
Sulfur Content > 1 %	W	W	W	W	W	W	W	W	NA
Wyoming									
Motor Gasoline	24,582	23,636	26,601	27,242	31,259	30,266	171,615	163,586	-5.2
Regular	21,422	20,566	23,464	24,224	27,984	26,819	148,551	144,479	-3.3
Conventional	21,422	20,566	23,464	24,224	27,984	26,819	148,551	144,479	-3.3
Reformulated	-	-	-	-	-	-	-	-	-
Midgrade	300	277	330	280	309	337	2,430	1,833	-25.0
Conventional	300	277	330	280	309	337	2,430	1,833	-25.0
Reformulated	-	-	-	-	-	-	-	-	-
Premium	2,860	2,793	2,807	2,738	2,966	3,110	20,634	17,274	-16.7
Conventional	2,860	2,793	2,807	2,738	2,966	3,110	20,634	17,274	-16.7
Reformulated	-	-	-	-	-	-	-	-	-
Total Distillate	W	W	W	W	W	W	W	W	W
No. 1 Distillate	2,158	2,425	646	93	70	63	7,723	5,455	-29.8
No. 2 Distillate	50,380	50,432	59,105	59,245	59,575	54,781	322,637	333,518	2.8
No. 2 Fuel Oil	-	-	-	-	-	-	-	-	-
No. 2 Diesel Fuel	NA	NA	NA	NA	NA	NA	NA	NA	NA
Ultra Low Sulfur	38,551	41,889	49,523	48,606	48,126	45,981	238,740	272,676	13.6
Low Sulfur	W	W	9,582	10,639	11,449	8,800	W	W	NA
High Sulfur	W	W	-	-	-	-	W	W	NA
No. 4 Fuel	-	-	-	-	-	-	-	-	-
Aviation Gasoline	W	W	W	20	W	W	W	W	NA
Kerosene-Type Jet Fuel	1,038	1,224	1,209	1,201	1,359	1,211	6,607	7,242	9.0
Kerosene	-	-	-	-	-	-	-	-	-
Propane	17,841	14,093	12,024	11,755	12,626	9,898	75,226	78,237	3.4
Residual Fuel Oil	W	W	W	W	W	W	W	W	NA
Sulfur Content <= 1 %	W	W	W	W	W	W	W	W	NA
Sulfur Content > 1 %	-	-	-	-	-	-	W	-	NA

See footnotes at end of table.

Prime Supplier Sales Volumes of Petroleum Products by Grade, PAD District, and State

(Thousand Gallons) — Continued

Geographic Area Products	January 2008	February 2008	March 2008	April 2008	May 2008	June 2008	Cumulative Year To Date 2007	Cumulative Year To Date 2008	Adjusted Year To Date % Change ¹
PAD District V									
Motor Gasoline	1,911,476	1,842,644	1,972,464	1,947,872	2,004,174	1,905,123	12,268,428	11,583,753	-6.1
Regular	1,578,408	1,508,986	1,636,681	1,627,004	1,687,906	1,620,022	10,034,117	9,659,007	-4.3
Conventional	489,871	478,551	511,687	518,733	552,800	523,135	3,085,734	3,074,777	-0.9
Reformulated	1,088,537	1,030,435	1,124,994	1,108,271	1,135,106	1,096,887	6,948,383	6,584,230	-5.8
Midgrade	86,350	85,275	84,687	80,862	80,119	70,437	594,586	487,730	-18.4
Conventional	21,515	21,102	20,808	21,304	20,889	18,104	147,616	123,722	-16.6
Reformulated	64,835	64,173	63,879	59,558	59,230	52,333	446,970	364,008	-19.0
Premium	246,718	248,383	251,096	240,006	236,149	214,664	1,639,725	1,437,016	-12.8
Conventional	56,886	57,208	57,444	58,959	57,677	51,984	369,682	340,158	-8.5
Reformulated	189,832	191,175	193,652	181,047	178,472	162,680	1,270,043	1,096,858	-14.1
Total Distillate	W	W	W	W	W	W	W	W	W
No. 1 Distillate	10,618	11,452	9,811	6,754	W	W	W	W	NA
No. 2 Distillate	623,564	602,066	632,383	659,626	663,918	696,528	4,051,786	3,878,085	-4.8
No. 2 Fuel Oil	W	W	7,948	4,967	9,630	7,619	W	W	NA
No. 2 Diesel Fuel	NA	NA	NA	NA	NA	NA	NA	NA	NA
Ultra Low Sulfur	516,896	501,990	542,946	575,381	582,228	595,347	3,368,642	3,314,788	-2.1
Low Sulfur	79,891	71,909	66,119	67,427	63,137	84,381	227,546	432,864	89.2
High Sulfur	W	W	15,370	11,851	8,923	9,181	W	W	NA
No. 4 Fuel	W	W	W	W	W	W	W	W	NA
Aviation Gasoline	2,667	3,076	3,321	4,342	4,845	5,499	26,889	23,750	-12.2
Kerosene-Type Jet Fuel	548,299	533,197	553,187	536,463	575,572	552,902	3,549,657	3,299,620	-7.6
Kerosene	W	W	W	W	W	W	W	W	NA
Propane	126,389	104,804	90,081	81,206	65,364	55,611	534,214	523,455	-2.6
Residual Fuel Oil	223,395	225,336	183,374	213,567	219,867	198,221	1,386,488	1,263,760	-9.4
Sulfur Content <= 1 %	49,988	50,006	51,801	55,387	43,309	67,455	346,859	317,946	-8.8
Sulfur Content > 1 %	173,407	175,330	131,573	158,180	176,558	130,766	1,039,629	945,814	-9.5
Alaska									
Motor Gasoline	19,759	19,263	19,542	19,732	23,485	24,697	132,603	126,478	-5.1
Regular	18,308	17,601	18,094	18,379	22,099	23,408	122,048	117,889	-3.9
Conventional	18,308	17,601	18,094	18,379	22,099	23,408	122,048	117,889	-3.9
Reformulated	-	-	-	-	-	-	-	-	-
Midgrade	866	1,079	884	803	817	775	6,442	5,224	-19.4
Conventional	866	1,079	884	803	817	775	6,442	5,224	-19.4
Reformulated	-	-	-	-	-	-	-	-	-
Premium	585	583	564	550	569	514	4,113	3,365	-18.6
Conventional	585	583	564	550	569	514	4,113	3,365	-18.6
Reformulated	-	-	-	-	-	-	-	-	-
Total Distillate	W	W	W	W	W	W	W	W	W
No. 1 Distillate	W	W	W	W	W	W	W	W	NA
No. 2 Distillate	W	W	W	W	W	W	W	W	NA
No. 2 Fuel Oil	5,034	W	W	W	8,511	6,823	W	W	NA
No. 2 Diesel Fuel	NA	NA	NA	NA	NA	NA	NA	NA	NA
Ultra Low Sulfur	W	W	W	W	W	W	W	W	NA
Low Sulfur	329	444	320	273	884	1,408	W	3,658	NA
High Sulfur	W	W	W	W	W	W	W	W	NA
No. 4 Fuel	-	-	-	-	-	-	-	-	-
Aviation Gasoline	W	W	W	W	W	W	W	W	NA
Kerosene-Type Jet Fuel	69,121	66,627	75,259	77,341	76,086	82,522	503,476	446,956	-11.7
Kerosene	-	-	-	-	-	-	-	-	-
Propane	W	W	W	W	W	W	W	W	NA
Residual Fuel Oil	-	-	-	-	-	-	W	-	NA
Sulfur Content <= 1 %	-	-	-	-	-	-	-	-	-
Sulfur Content > 1 %	-	-	-	-	-	-	W	-	NA

See footnotes at end of table.

Prime Supplier Sales Volumes of Petroleum Products by Grade, PAD District, and State

(Thousand Gallons) — Continued

Geographic Area Products	January 2008	February 2008	March 2008	April 2008	May 2008	June 2008	Cumulative Year To Date 2007	Cumulative Year To Date 2008	Adjusted Year To Date % Change ¹
Arizona									
Motor Gasoline	205,173	207,039	218,903	226,162	217,874	195,211	1,331,758	1,270,362	-5.1
Regular	179,302	179,803	191,018	198,871	191,770	173,952	1,149,951	1,114,716	-3.6
Conventional	100,203	100,666	108,693	106,823	W	92,613	W	W	NA
Reformulated	79,099	79,137	82,325	92,048	W	81,339	W	W	NA
Midgrade	5,716	5,874	5,838	5,624	4,888	3,866	39,493	31,806	-19.9
Conventional	3,660	3,763	3,841	3,829	3,497	2,654	23,324	21,244	-9.4
Reformulated	2,056	2,111	1,997	1,795	1,391	1,212	16,169	10,562	-35.0
Premium	20,155	21,362	22,047	21,667	21,216	17,393	142,314	123,840	-13.5
Conventional	9,577	9,972	10,375	10,871	W	7,826	61,826	W	NA
Reformulated	10,578	11,390	11,672	10,796	W	9,567	80,488	W	NA
Total Distillate	W	W	W	W	W	W	W	W	W
No. 1 Distillate	-	W	-	W	-	-	W	W	NA
No. 2 Distillate	78,248	W	78,769	W	79,757	80,920	W	W	NA
No. 2 Fuel Oil	-	-	-	-	-	-	W	-	NA
No. 2 Diesel Fuel	NA	NA	NA	NA	NA	NA	NA	NA	NA
Ultra Low Sulfur	62,013	W	64,858	69,139	69,742	70,988	W	W	NA
Low Sulfur	W	15,407	13,911	15,278	10,015	9,932	W	W	NA
High Sulfur	W	-	-	W	-	-	W	W	NA
No. 4 Fuel	-	-	-	-	-	-	-	-	-
Aviation Gasoline	487	493	578	701	586	506	3,934	3,351	-15.3
Kerosene-Type Jet Fuel	W	19,848	19,310	16,237	W	W	134,760	W	NA
Kerosene	-	-	-	-	-	-	W	-	NA
Propane	19,197	13,132	9,596	6,629	6,104	4,586	52,325	59,244	12.6
Residual Fuel Oil	W	W	W	W	W	W	W	W	NA
Sulfur Content <= 1 %	W	W	W	W	W	W	W	W	NA
Sulfur Content > 1 %	-	-	-	-	-	-	-	-	-
California									
Motor Gasoline	1,239,614	1,181,955	1,275,001	1,239,523	1,274,156	1,219,782	7,959,079	7,430,031	-7.2
Regular	999,734	942,045	1,033,060	1,012,291	1,049,430	1,015,548	6,350,579	6,052,108	-5.2
Conventional	-	-	-	-	-	-	-	-	-
Reformulated	999,734	942,045	1,033,060	1,012,291	1,049,430	1,015,548	6,350,579	6,052,108	-5.2
Midgrade	62,026	61,388	61,259	57,533	57,839	51,121	427,644	351,166	-18.3
Conventional	-	-	-	-	-	-	-	-	-
Reformulated	62,026	61,388	61,259	57,533	57,839	51,121	427,644	351,166	-18.3
Premium	177,854	178,522	180,682	169,699	166,887	153,113	1,180,856	1,026,757	-13.5
Conventional	-	-	-	-	-	-	-	-	-
Reformulated	177,854	178,522	180,682	169,699	166,887	153,113	1,180,856	1,026,757	-13.5
Total Distillate	W	W	W	W	W	W	W	W	W
No. 1 Distillate	-	-	-	-	-	-	-	-	-
No. 2 Distillate	308,910	301,851	334,051	354,366	358,078	W	2,083,429	W	NA
No. 2 Fuel Oil	-	-	-	-	-	-	W	-	NA
No. 2 Diesel Fuel	NA	NA	NA	NA	NA	NA	NA	NA	NA
Ultra Low Sulfur	W	W	W	W	W	W	W	W	NA
Low Sulfur	-	-	-	-	-	-	W	-	NA
High Sulfur	W	W	W	W	W	W	W	W	NA
No. 4 Fuel	W	W	W	W	W	-	W	W	NA
Aviation Gasoline	1,232	1,131	1,425	1,467	1,358	1,472	10,667	8,085	-24.6
Kerosene-Type Jet Fuel	312,049	308,112	326,472	303,986	328,776	315,955	2,028,985	1,895,350	-7.1
Kerosene	W	W	W	W	W	W	W	W	NA
Propane	72,026	61,791	51,969	44,674	39,388	34,177	318,187	304,025	-5.0
Residual Fuel Oil	130,441	132,530	97,609	131,074	132,398	104,522	852,667	728,574	-15.0
Sulfur Content <= 1 %	W	W	W	W	17,972	18,056	W	W	NA
Sulfur Content > 1 %	W	W	W	W	114,426	86,466	W	W	NA

See footnotes at end of table.

Prime Supplier Sales Volumes of Petroleum Products by Grade, PAD District, and State

(Thousand Gallons) — Continued

Geographic Area Products	January 2008	February 2008	March 2008	April 2008	May 2008	June 2008	Cumulative Year To Date 2007	Cumulative Year To Date 2008	Adjusted Year To Date % Change ¹
Hawaii									
Motor Gasoline	38,675	38,312	39,537	38,379	40,261	37,922	236,151	233,086	-1.8
Regular	29,173	28,796	29,929	29,187	31,159	29,865	175,889	178,109	0.7
Conventional	29,173	28,796	29,929	29,187	31,159	29,865	175,889	178,109	0.7
Reformulated	-	-	-	-	-	-	-	-	-
Midgrade	3,023	3,055	3,143	2,984	3,082	2,721	20,887	18,008	-14.3
Conventional	3,023	3,055	3,143	2,984	3,082	2,721	20,887	18,008	-14.3
Reformulated	-	-	-	-	-	-	-	-	-
Premium	6,479	6,461	6,465	6,208	6,020	5,336	39,375	36,969	-6.6
Conventional	6,479	6,461	6,465	6,208	6,020	5,336	39,375	36,969	-6.6
Reformulated	-	-	-	-	-	-	-	-	-
Total Distillate	W	W	W	W	W	W	W	W	W
No. 1 Distillate	-	-	-	-	-	-	-	-	-
No. 2 Distillate	19,471	17,169	16,410	19,196	16,444	17,513	147,208	106,203	-28.3
No. 2 Fuel Oil	-	-	-	-	-	-	-	-	-
No. 2 Diesel Fuel	NA	NA	NA	NA	NA	NA	NA	NA	NA
Ultra Low Sulfur	4,923	4,743	4,911	4,977	4,925	4,623	27,667	29,102	4.6
Low Sulfur	W	W	W	W	W	W	W	W	NA
High Sulfur	W	W	W	W	W	W	W	W	NA
No. 4 Fuel	-	-	-	-	-	-	-	-	-
Aviation Gasoline	W	W	W	W	W	W	W	W	NA
Kerosene-Type Jet Fuel	W	W	W	W	W	W	247,534	W	NA
Kerosene	-	-	-	-	-	-	-	-	-
Propane	W	W	W	W	W	W	W	W	NA
Residual Fuel Oil	W	W	W	W	W	W	W	W	NA
Sulfur Content <= 1 %	W	W	W	W	W	W	W	W	NA
Sulfur Content > 1 %	W	W	W	W	W	W	W	W	NA
Nevada									
Motor Gasoline	74,634	71,822	74,223	78,080	80,727	77,954	494,753	457,440	-8.0
Regular	60,077	57,527	60,278	63,598	67,304	66,163	395,875	374,947	-5.8
Conventional	50,373	48,274	50,669	59,666	W	66,163	W	W	NA
Reformulated	9,704	9,253	NA	3,932	W	-	W	W	NA
Midgrade	3,904	3,620	3,624	3,748	3,520	3,155	25,882	21,571	-17.1
Conventional	3,151	2,946	3,001	3,518	3,520	3,155	22,725	19,291	-15.6
Reformulated	753	674	NA	230	-	-	3,157	W	NA
Premium	10,653	10,675	10,321	10,734	9,903	8,636	72,996	60,922	-17.0
Conventional	9,253	9,412	9,023	10,182	W	8,636	64,297	W	NA
Reformulated	1,400	1,263	NA	552	W	-	8,699	W	NA
Total Distillate	W	W	W	W	W	W	W	W	W
No. 1 Distillate	W	W	W	W	-	-	W	W	NA
No. 2 Distillate	33,090	34,359	34,509	35,479	W	W	W	W	NA
No. 2 Fuel Oil	-	-	-	-	-	W	-	W	NA
No. 2 Diesel Fuel	NA	NA	NA	NA	NA	NA	NA	NA	NA
Ultra Low Sulfur	W	22,588	W	W	28,528	30,278	W	W	NA
Low Sulfur	11,244	W	6,655	6,360	6,550	W	W	W	NA
High Sulfur	W	W	W	W	W	W	W	W	NA
No. 4 Fuel	W	W	W	W	W	W	W	W	NA
Aviation Gasoline	W	W	W	W	W	W	W	W	NA
Kerosene-Type Jet Fuel	34,183	33,103	26,796	27,451	27,020	27,841	155,861	176,394	12.6
Kerosene	-	-	-	-	-	-	-	-	-
Propane	5,130	5,425	2,904	2,172	1,851	1,521	16,878	19,003	12.0
Residual Fuel Oil	-	-	-	-	-	-	W	-	NA
Sulfur Content <= 1 %	-	-	-	-	-	-	W	-	NA
Sulfur Content > 1 %	-	-	-	-	-	-	-	-	-

See footnotes at end of table.

Prime Supplier Sales Volumes of Petroleum Products by Grade, PAD District, and State

(Thousand Gallons) — Continued

Geographic Area Products	January 2008	February 2008	March 2008	April 2008	May 2008	June 2008	Cumulative Year To Date 2007	Cumulative Year To Date 2008	Adjusted Year To Date % Change ¹
Oregon									
Motor Gasoline	117,292	115,606	122,264	125,761	130,717	124,184	746,294	735,824	-1.9
Regular	106,132	104,410	111,432	114,120	119,281	113,224	670,973	668,599	-0.9
Conventional	106,132	104,410	111,432	114,120	119,281	113,224	670,973	668,599	-0.9
Reformulated	-	-	-	-	-	-	-	-	-
Midgrade	2,570	2,491	2,207	2,427	2,165	1,961	18,106	13,821	-24.1
Conventional	2,570	2,491	2,207	2,427	2,165	1,961	18,106	13,821	-24.1
Reformulated	-	-	-	-	-	-	-	-	-
Premium	8,590	8,705	8,625	9,214	9,271	8,999	57,215	53,404	-7.2
Conventional	8,590	8,705	8,625	9,214	9,271	8,999	57,215	53,404	-7.2
Reformulated	-	-	-	-	-	-	-	-	-
Total Distillate	W	W	W	W	W	W	W	W	W
No. 1 Distillate	W	W	W	W	W	W	W	W	NA
No. 2 Distillate	W	W	W	W	W	W	W	W	NA
No. 2 Fuel Oil	-	-	-	-	W	W	W	W	NA
No. 2 Diesel Fuel	NA	NA	NA	NA	NA	NA	NA	NA	NA
Ultra Low Sulfur	49,137	47,582	47,656	48,403	51,578	W	W	W	NA
Low Sulfur	15,944	16,799	17,072	W	W	14,879	W	W	NA
High Sulfur	W	W	W	-	-	-	W	W	NA
No. 4 Fuel	-	-	-	-	-	-	-	-	-
Aviation Gasoline	86	96	97	127	346	165	W	917	NA
Kerosene-Type Jet Fuel	16,508	W	W	W	18,590	17,480	99,605	W	NA
Kerosene	-	-	-	-	-	-	-	-	-
Propane	7,485	6,376	4,995	5,303	4,151	3,488	31,935	31,798	-1.0
Residual Fuel Oil	W	2,237	3,611	3,055	4,116	3,840	29,864	W	NA
Sulfur Content <= 1 %	W	-	-	W	W	W	W	W	NA
Sulfur Content > 1 %	W	2,237	3,611	W	W	W	W	W	NA
Washington									
Motor Gasoline	216,329	208,647	222,994	220,235	236,954	225,373	1,367,790	1,330,532	-3.3
Regular	185,682	178,804	192,870	190,558	206,863	197,862	1,168,802	1,152,639	-1.9
Conventional	185,682	178,804	192,870	190,558	206,863	197,862	1,168,802	1,152,639	-1.9
Reformulated	-	-	-	-	-	-	-	-	-
Midgrade	8,245	7,768	7,732	7,743	7,808	6,838	56,132	46,134	-18.3
Conventional	8,245	7,768	7,732	7,743	7,808	6,838	56,132	46,134	-18.3
Reformulated	-	-	-	-	-	-	-	-	-
Premium	22,402	22,075	22,392	21,934	22,283	20,673	142,856	131,759	-8.3
Conventional	22,402	22,075	22,392	21,934	22,283	20,673	142,856	131,759	-8.3
Reformulated	-	-	-	-	-	-	-	-	-
Total Distillate	W	W	W	W	W	W	W	W	W
No. 1 Distillate	W	W	W	W	W	W	W	W	NA
No. 2 Distillate	103,738	89,203	W	W	W	W	W	W	NA
No. 2 Fuel Oil	W	W	W	W	W	W	W	W	NA
No. 2 Diesel Fuel	NA	NA	NA	NA	NA	NA	NA	NA	NA
Ultra Low Sulfur	64,794	57,997	60,041	63,221	63,303	66,842	389,227	376,198	-3.9
Low Sulfur	W	19,633	W	W	W	W	W	W	NA
High Sulfur	NA	W	NA	-	W	-	195,060	W	NA
No. 4 Fuel	-	-	-	-	-	-	-	-	-
Aviation Gasoline	192	748	314	1,017	1,227	647	3,819	4,145	7.9
Kerosene-Type Jet Fuel	61,443	51,994	46,408	57,281	72,238	65,178	379,436	354,542	-7.1
Kerosene	W	W	-	-	-	-	W	W	NA
Propane	20,605	16,421	18,774	21,091	12,578	10,194	92,072	99,663	7.6
Residual Fuel Oil	45,595	47,864	38,512	33,740	48,577	32,094	218,817	246,382	12.0
Sulfur Content <= 1 %	-	W	W	-	W	W	W	W	NA
Sulfur Content > 1 %	45,595	W	W	33,740	W	W	W	W	NA

Dash (-) = No data reported.

NA = Not available.

W = Withheld to avoid disclosure of individual company data.

¹ Calculated on a per day basis.

Notes: In January 2007, oxygenated was combined with conventional gasoline and ultra low sulfur diesel was added. Values shown for the current month are preliminary. Values shown for previous months are revised. Data are final upon publication in the *Petroleum Marketing Annual*.

Source: Energy Information Administration, Form EIA-782C, "Monthly Report of Prime Supplier Sales of Petroleum Products Sold for Local Consumption."