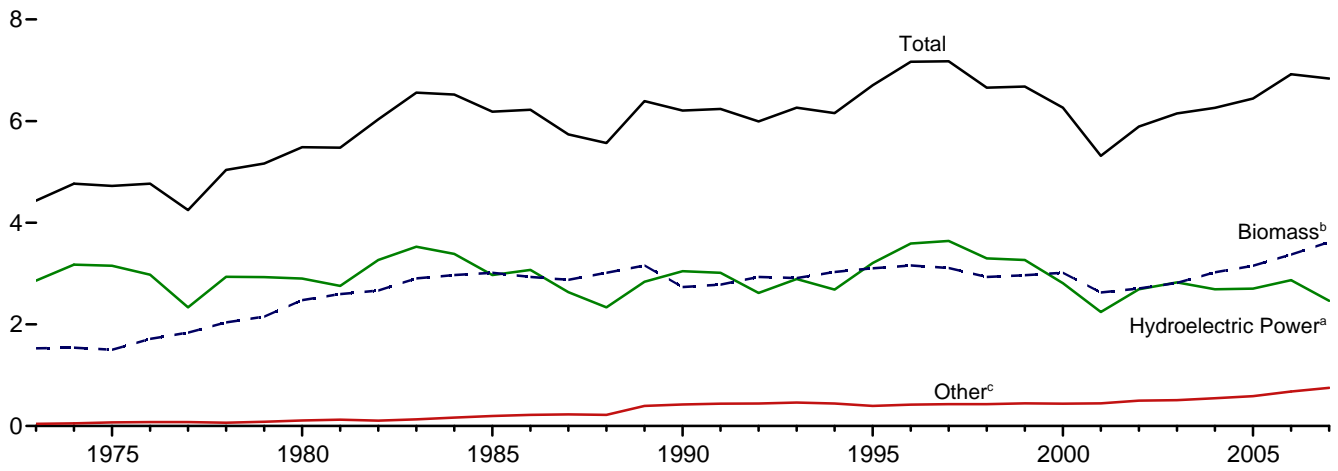
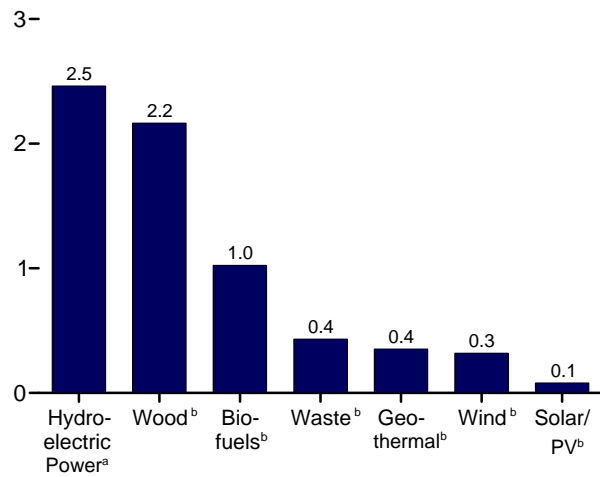


**Figure 10.1 Renewable Energy Consumption**  
(Quadrillion Btu)

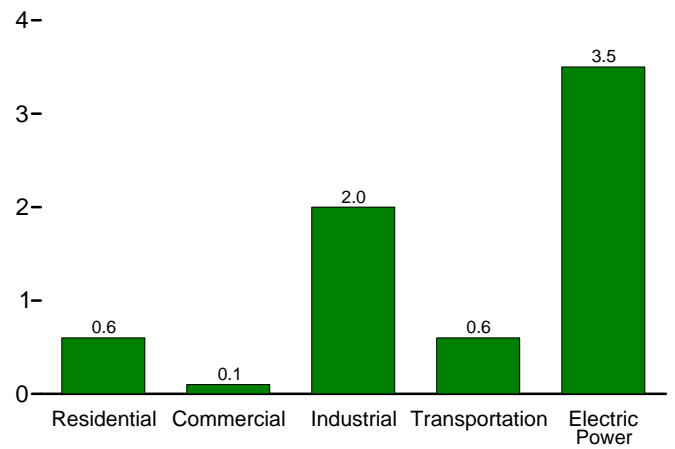
Total and Major Sources, 1973-2007



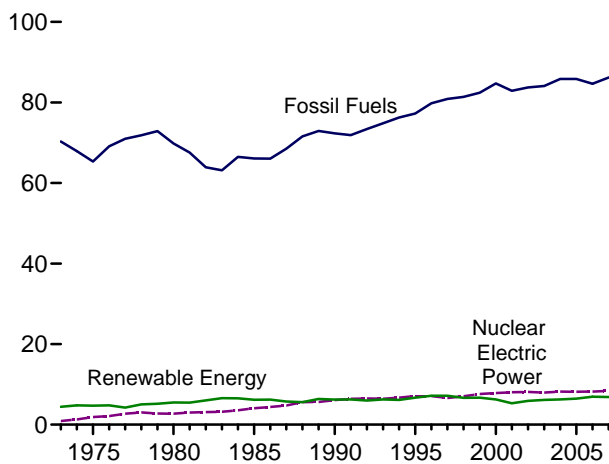
By Source, 2007



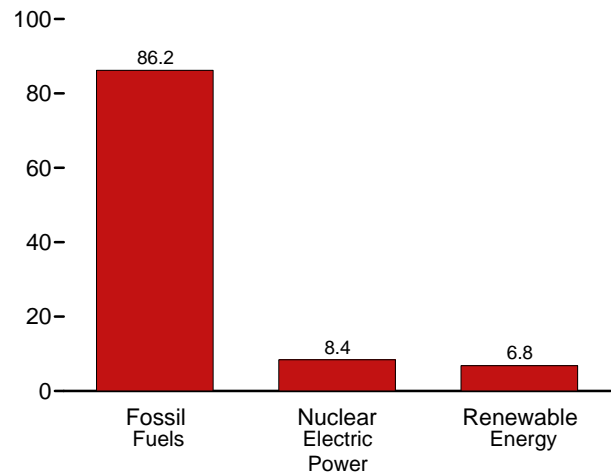
By Sector, 2007



Compared With Other Resources, 1973-2007



Compared With Other Resources, 2007



<sup>a</sup>Conventional hydroelectric power.  
<sup>b</sup>See Table 10.1 for definition.  
<sup>c</sup>Geothermal, solar/PV, and wind.

Web Page: <http://www.eia.doe.gov/emeu/mer/renew.html>.  
Sources: Tables 1.3, 10.1, and 10.2a-c.