

Figure 8. U.S. Imports of Crude Oil and Petroleum Products, July 2007 to Present

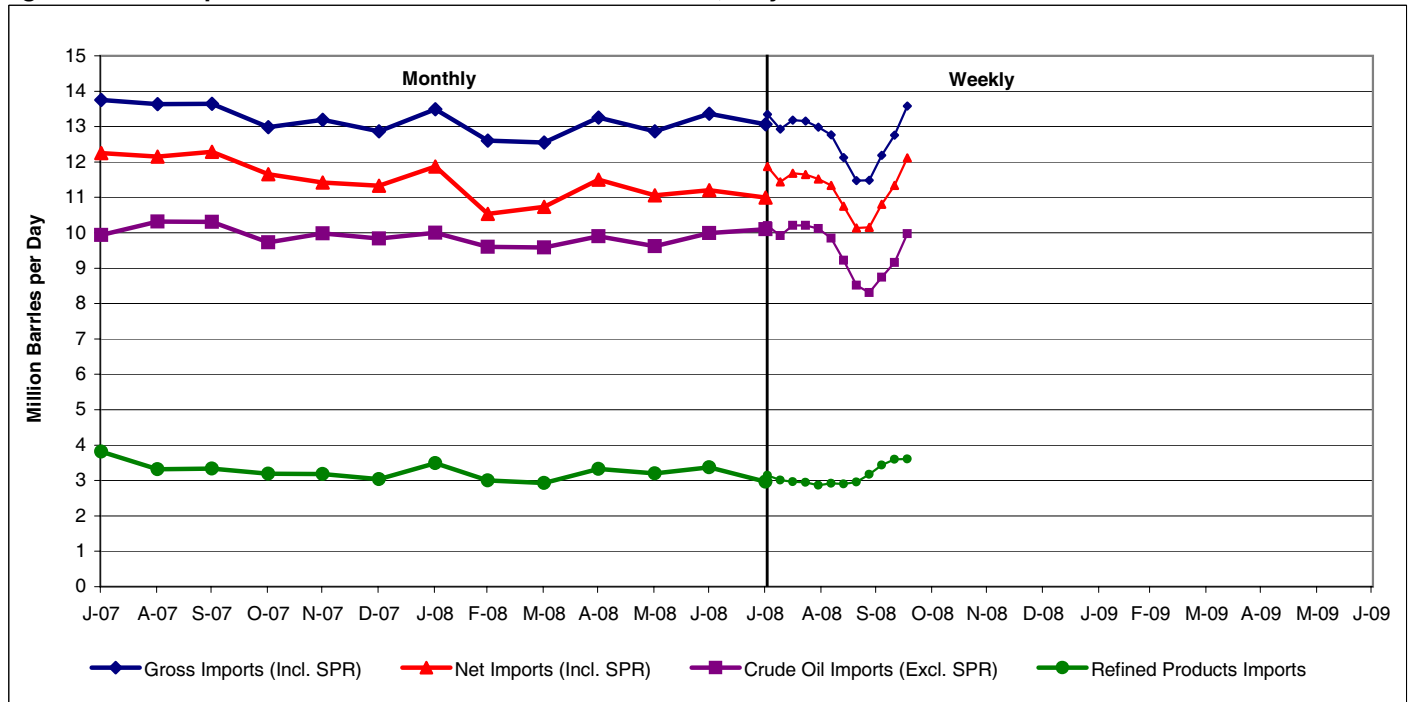


Table 8. U.S. Imports of Crude Oil and Petroleum Products, January 2007 to Present
(Thousand Barrels per Day)

Year/Product	Jan	Feb	Mar	Apr	May	Jun	Jul	Aug	Sep	Oct	Nov	Dec
2007												
Crude Oil (Excl. SPR)	10,211	9,009	10,362	10,161	10,328	10,015	9,939	10,316	10,307	9,733	9,985	9,835
SPR	0	0	0	0	0	0	0	0	0	0	0	0
Refined Products	3,495	3,164	3,576	3,681	3,876	3,538	3,815	3,318	3,339	3,196	3,184	3,035
Gross Imports (Incl. SPR)	13,706	12,173	13,956	13,842	14,204	13,553	13,754	13,634	13,646	12,981	13,188	12,869
Total Exports ¹	1,446	1,350	1,274	1,360	1,441	1,331	1,506	1,483	1,361	1,325	1,767	1,542
Net Imports (Incl. SPR)	12,260	10,823	12,682	12,482	12,764	12,222	12,248	12,151	12,285	11,655	11,421	11,327
2008												
Crude Oil (Excl. SPR)	10,000	9,606	9,583	9,904	9,624	9,994	10,101					
SPR	0	0	0	0	0	0	0					
Refined Products	3,492	2,998	2,932	3,330	3,204	3,373	2,963					
Gross Imports (Incl. SPR)	13,493	12,604	12,550	13,252	12,862	13,367	13,064					
Total Exports ¹	1,623	2,072	1,823	1,754	1,806	2,165	2,069					
Net Imports (Incl. SPR)	11,869	10,531	10,728	11,498	11,056	11,202	10,995					
Average for Four-Week Period Ending:												
2008												
	8/1	8/8	8/15	8/22	8/29	9/5	9/12	9/19	9/26	10/3	10/10	10/17
Crude Oil (Excl. SPR)	10,199	9,915	10,211	10,205	10,114	9,845	9,225	8,516	8,306	8,747	9,160	9,974
SPR	0	0	0	0	0	0	0	0	0	0	0	0
Refined Products	3,148	3,011	2,970	2,952	2,868	2,919	2,903	2,959	3,177	3,437	3,599	3,605
Gross Imports (Incl. SPR)	13,347	12,926	13,181	13,156	12,981	12,764	12,128	11,475	11,483	12,184	12,759	13,579
Total Exports ¹	1,474	1,487	1,499	1,512	1,467	1,424	1,382	1,339	1,331	1,376	1,421	1,466
Net Imports (Incl. SPR)	11,873	11,439	11,681	11,644	11,515	11,340	10,746	10,136	10,152	10,808	11,338	12,113

¹ Includes exports of crude oil and refined petroleum products. Crude oil exports are restricted to (1) crude oil derived from fields under the State waters of Alaska's Cook Inlet, (2) certain domestically produced crude oil destined for Canada, and (3) shipments to U.S. territories.

Notes: Some data are estimates. See Sources for clarification of estimated data. Data may not add to total due to independent rounding.

Source: See page 33.