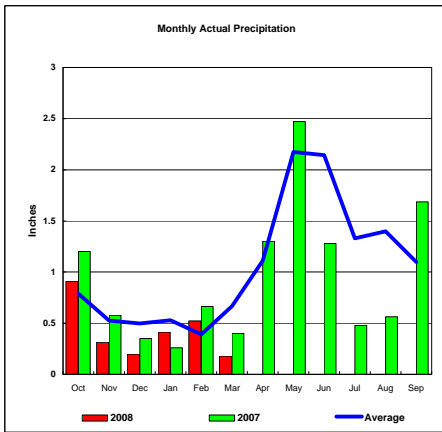
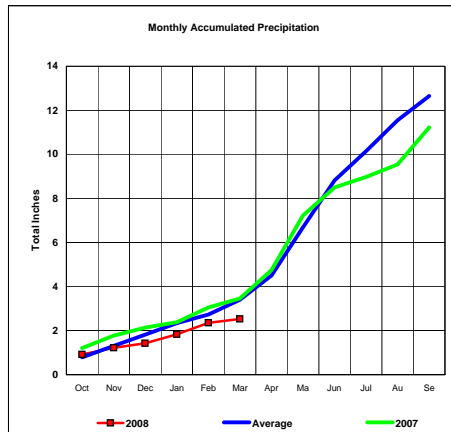


**BASIN PRECIPITATION - ACTUAL MONTHLY vs AVERAGE MONTHLY TOTALS**  
**Data for the month of March 2008**

**Upper Missouri River Basin**

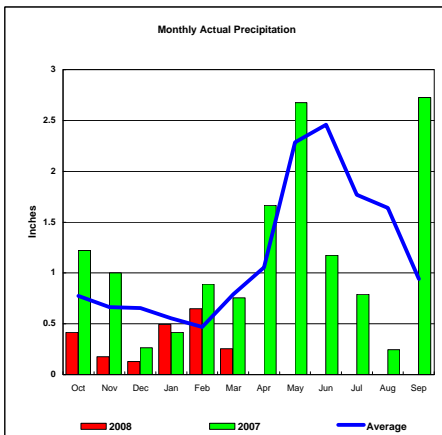


Total Actual Precipitation thru March (Inch.) - 2.53

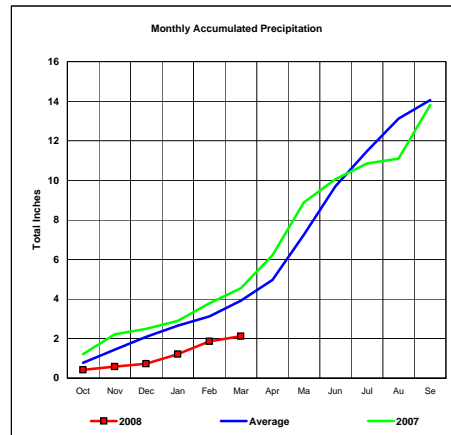


Total Average Precipitation thru March (Inch.) - 3.40  
 Percent of Average for March - 74.59%

**Milk River Basin**

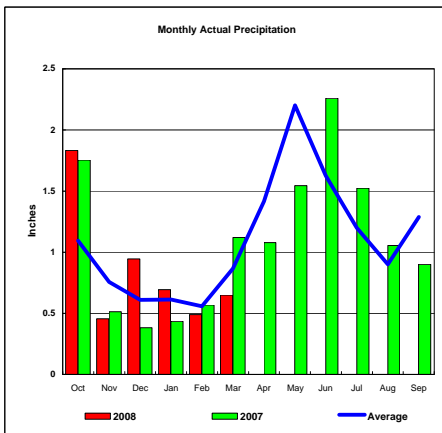


Total Actual Precipitation thru March (Inch.) - 2.12

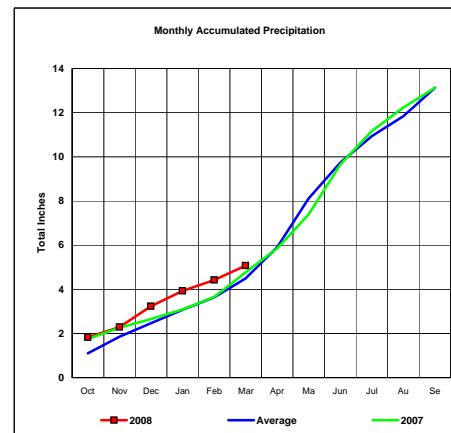


Total Average Precipitation thru March (Inch.) - 3.91  
 Percent of Average for March - 54.22%

**Bighorn River Basin**



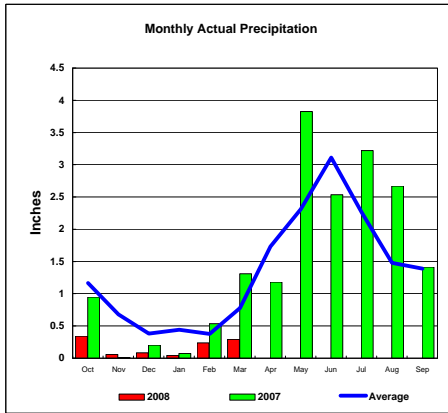
Total Actual Precipitation thru March (Inch.) - 5.07



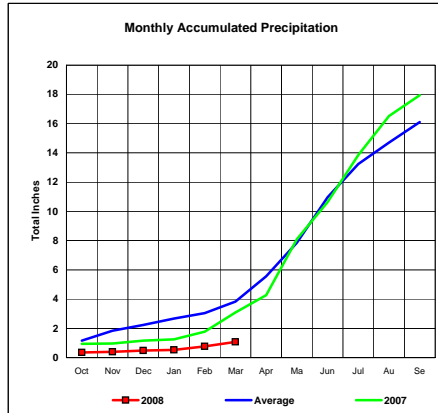
Total Average Precipitation thru March (Inch.) - 4.50  
 Percent of Average for March - 112.61%

**BASIN PRECIPITATION - ACTUAL MONTHLY vs AVERAGE MONTHLY TOTALS**  
Data for the month of March 2008

**Heart River Basin**

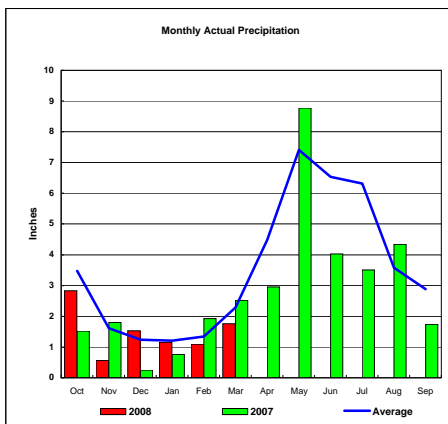


Total Actual Precipitation thru March (Inch.) - 1.07

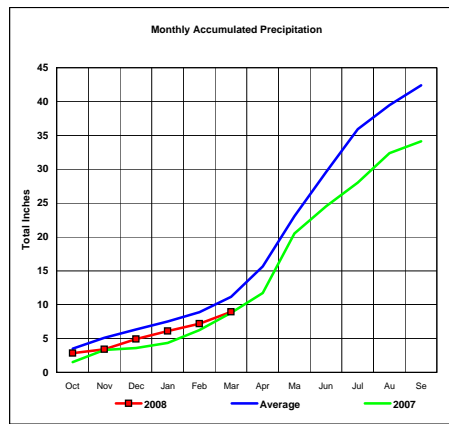


Total Average Precipitation thru March (Inch.) - 3.82  
Percent of Average for March - 27.88%

**Cheyenne River Basin**

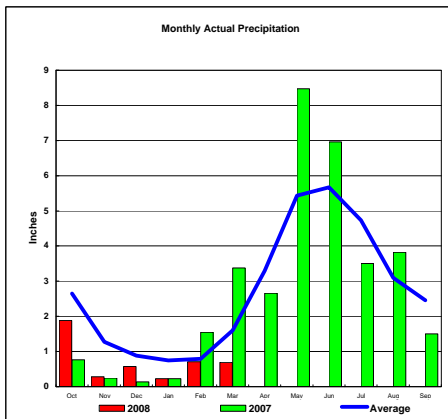


Total Actual Precipitation thru March (Inch.) - 8.93

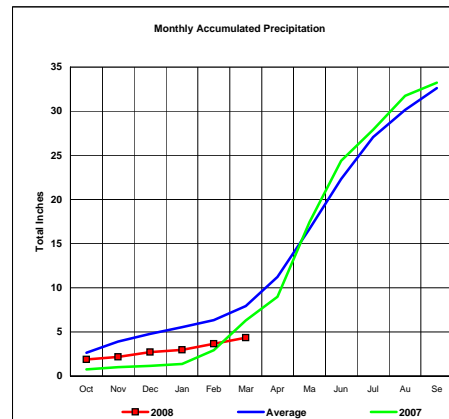


Total Average Precipitation thru March (Inch.) - 11.17  
Percent of Average for March - 79.93%

**Grand River Basin**



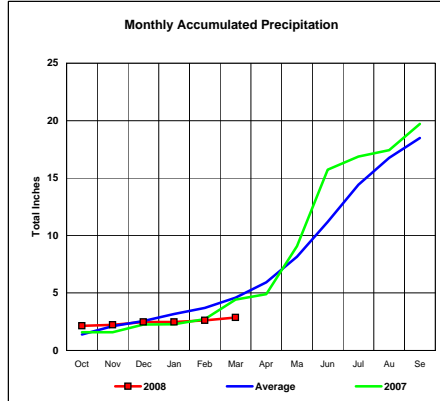
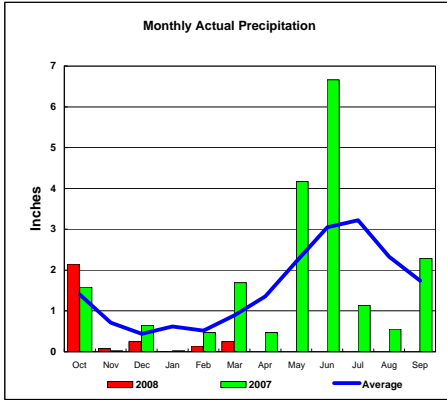
Total Actual Precipitation thru March (Inch.) - 4.36



Total Average Precipitation thru March (Inch.) - 7.94  
Percent of Average for March - 54.91%

**BASIN PRECIPITATION - ACTUAL MONTHLY vs AVERAGE MONTHLY TOTALS**  
Data for the month of March 2008

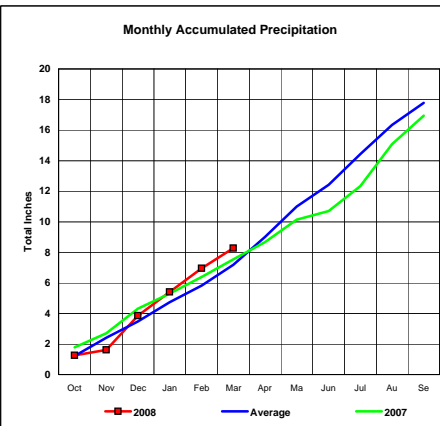
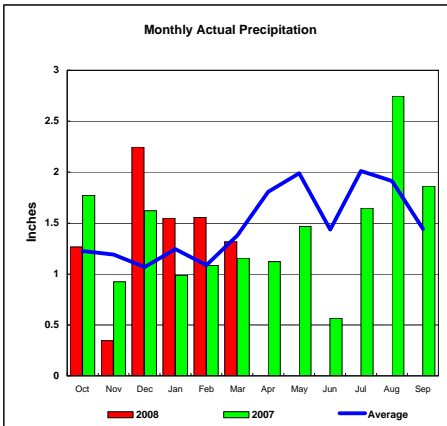
**James River Basin**



Total Actual Precipitation thru March (Inch.) - 2.88

Total Average Precipitation thru March (Inch.) - 4.58  
Percent of Average for March - 62.88%

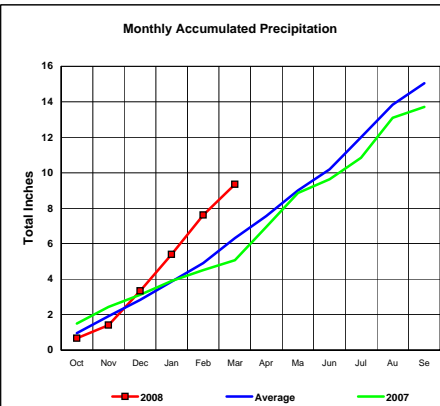
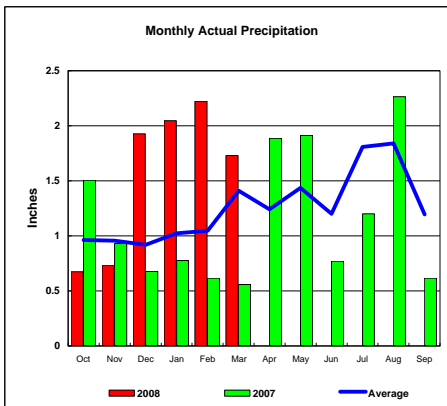
**Colorado-Big Thompson Project**



Total Actual Precipitation thru March (Inch.) - 8.28

Total Average Precipitation thru March (Inch.) - 7.19  
Percent of Average for March - 115.13%

**Fryingpan-Arkansas Project**

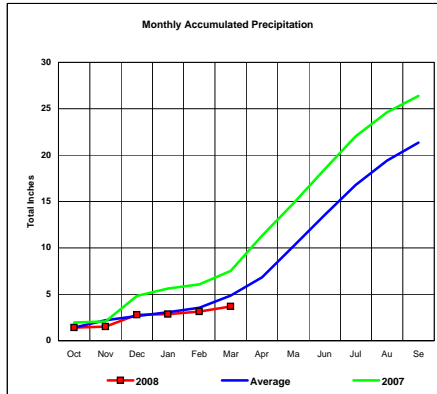
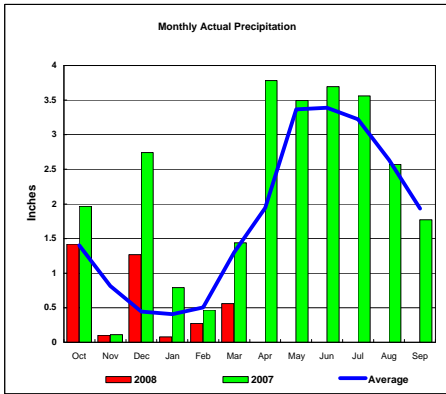


Total Actual Precipitation thru March (Inch.) - 9.34

Total Average Precipitation thru March (Inch.) - 6.32  
Percent of Average for March - 147.90%

**BASIN PRECIPITATION - ACTUAL MONTHLY vs AVERAGE MONTHLY TOTALS**  
 Data for the month of March 2008

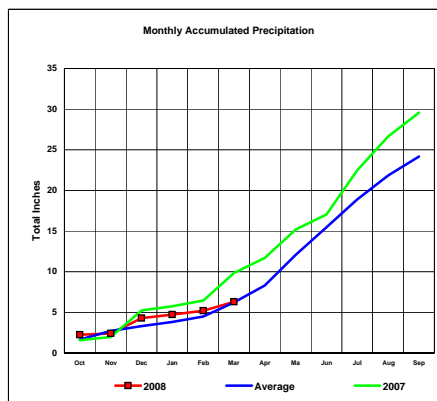
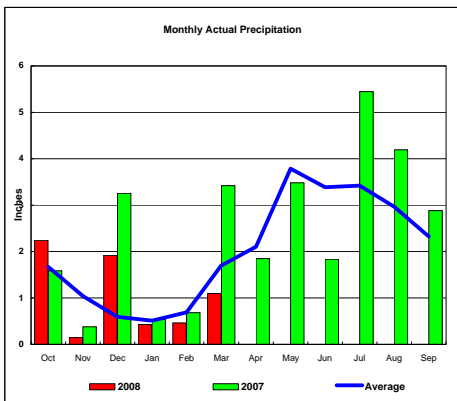
**Republican River Basin**



Total Actual Precipitation thru March (Inch.) - 3.70

Total Average Precipitation thru March (Inch.) - 4.87  
 Percent of Average for March - 75.93%

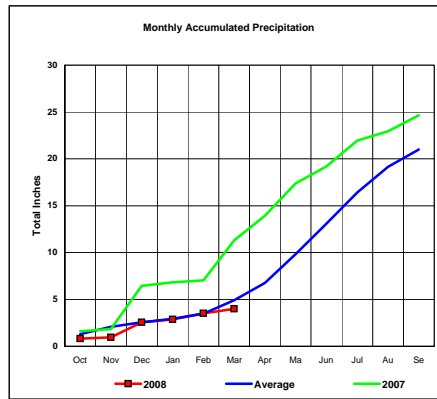
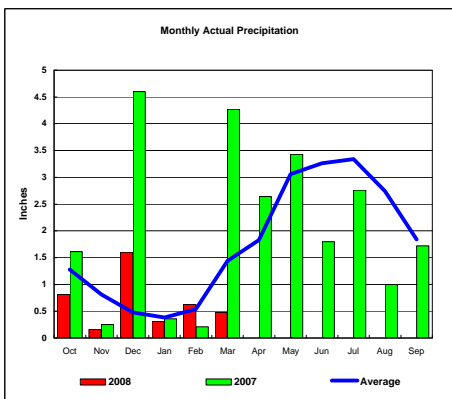
**Solomon River Basin**



Total Actual Precipitation thru March (Inch.) - 6.30

Total Average Precipitation thru March (Inch.) - 6.20  
 Percent of Average for March - 101.61%

**Smoky Hill River Basin**

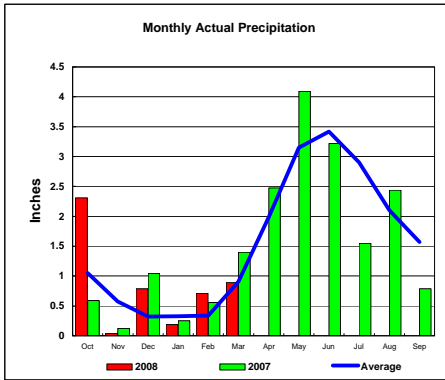


Total Actual Precipitation thru March (Inch.) - 3.99

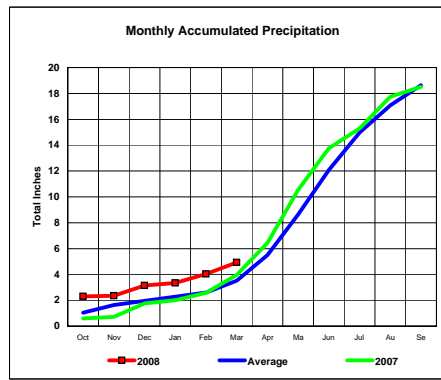
Total Average Precipitation thru March (Inch.) - 4.93  
 Percent of Average for March - 80.93%

**BASIN PRECIPITATION - ACTUAL MONTHLY vs AVERAGE MONTHLY TOTALS**  
Data for the month of March 2008

**Niobrara River Basin**

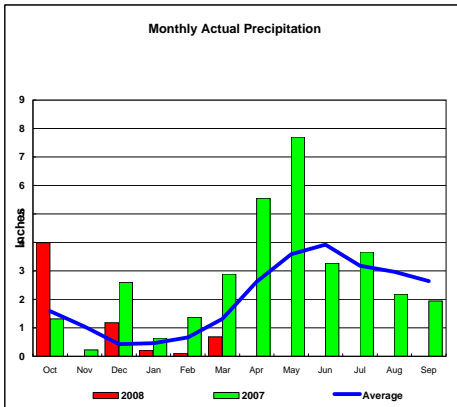


Total Actual Precipitation thru March (Inch.) - 4.93

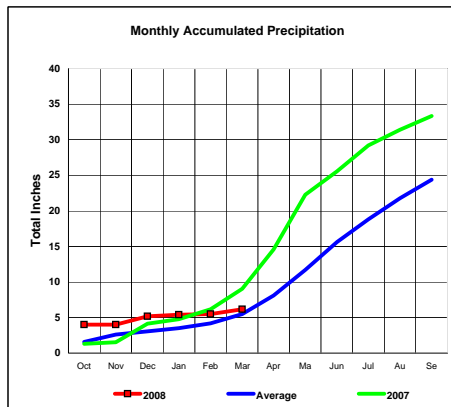


Total Average Precipitation thru March (Inch.) - 3.52  
Percent of Average for March - 140.26%

**Lower Platte River Basin**

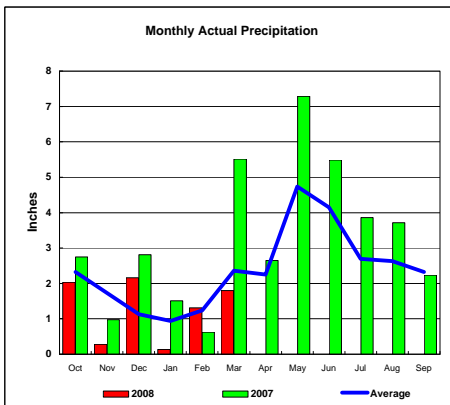


Total Actual Precipitation thru March (Inch.) - 6.18

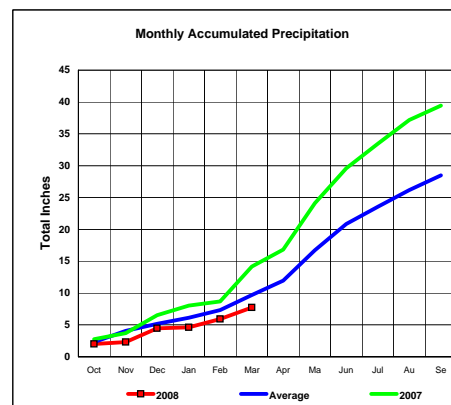


Total Average Precipitation thru March (Inch.) - 5.49  
Percent of Average for March - 112.48%

**Arkansas River Basin**



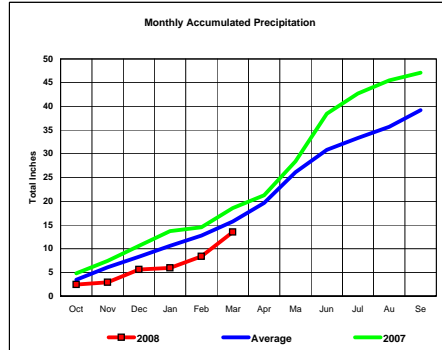
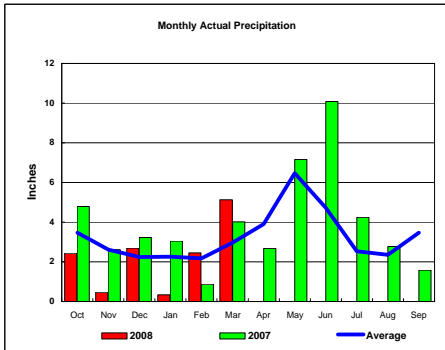
Total Actual Precipitation thru March (Inch.) - 7.73



Total Average Precipitation thru March (Inch.) - 9.72  
Percent of Average for March - 79.52%

**BASIN PRECIPITATION - ACTUAL MONTHLY vs AVERAGE MONTHLY TOTALS**  
Data for the month of March 2008

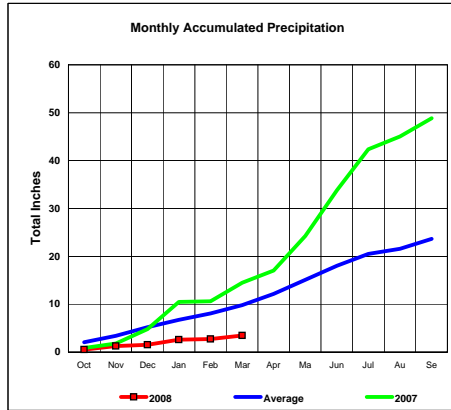
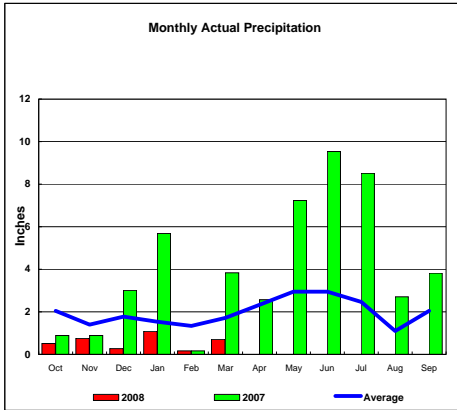
**Red River Basin**



Total Actual Precipitation thru March (Inch.) - 13.52

Total Average Precipitation thru March (Inch.) - 15.74  
Percent of Average for March - 85.91%

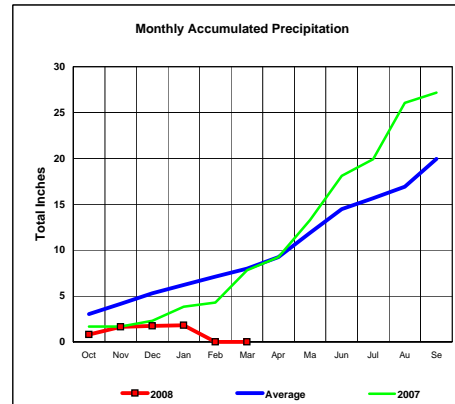
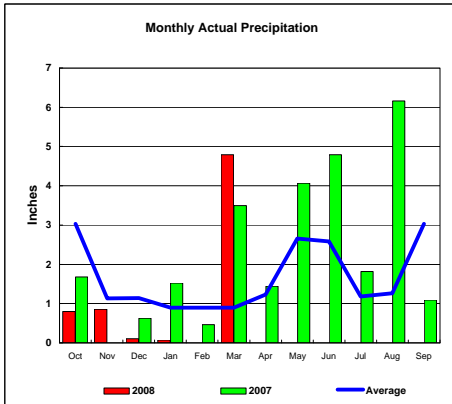
**Nueces River Basin**



Total Actual Precipitation thru March (Inch.) - 3.47

Total Average Precipitation thru March (Inch.) - 9.80  
Percent of Average for March - 35.41%

**Colorado River Basin**

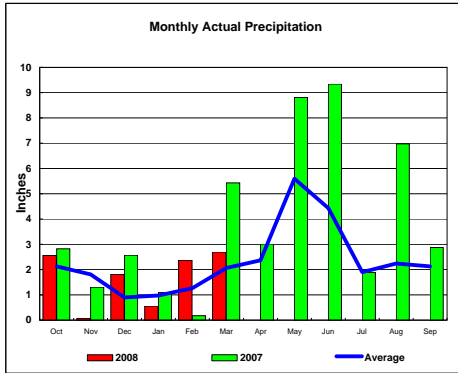


Total Actual Precipitation thru March (Inch.) - #DIV/0!

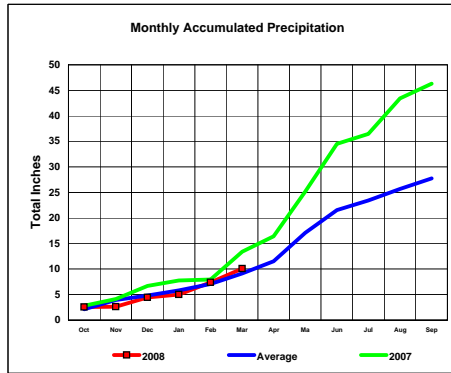
Total Average Precipitation thru March (Inch.) - 8.00  
Percent of Average for March - #DIV/0!

**BASIN PRECIPITATION - ACTUAL MONTHLY vs AVERAGE MONTHLY TOTALS**  
Data for the month of March 2008

**Washita River Basin**

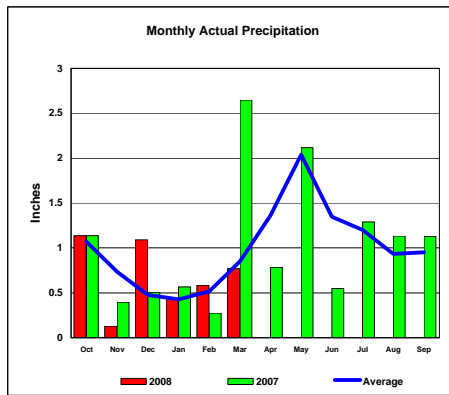


Total Actual Precipitation thru March (Inch.) - 10.07

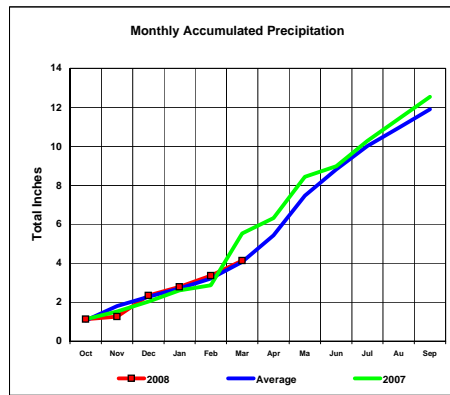


Total Average Precipitation thru March (Inch.) - 9.14  
Percent of Average for March - 110.18%

**North Platte River Basin**



Total Actual Precipitation thru March (Inch.) - 4.14



Total Average Precipitation thru March (Inch.) - 4.07  
Percent of Average for March - 101.72%