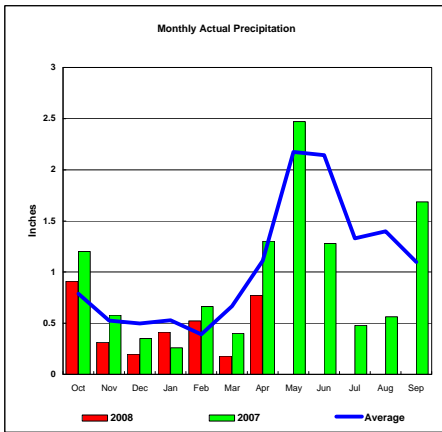
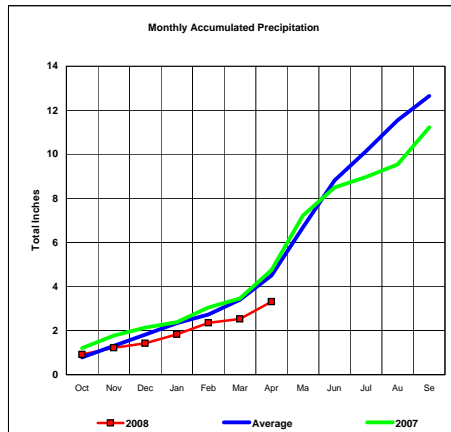


**BASIN PRECIPITATION - ACTUAL MONTHLY vs AVERAGE MONTHLY TOTALS**  
Data for the month of April 2008

**Upper Missouri River Basin**

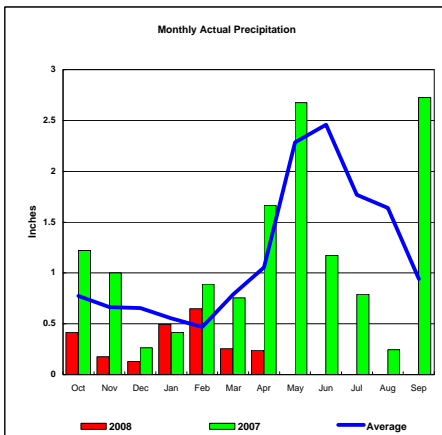


Total Actual Precipitation thru April (Inch.) - 3.31

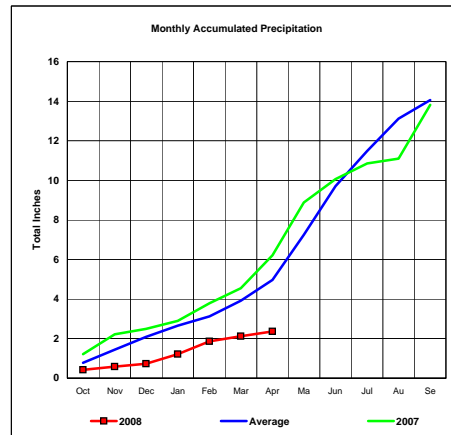


Total Average Precipitation thru April (Inch.) - 4.51  
Percent of Average for April - 73.36%

**Milk River Basin**

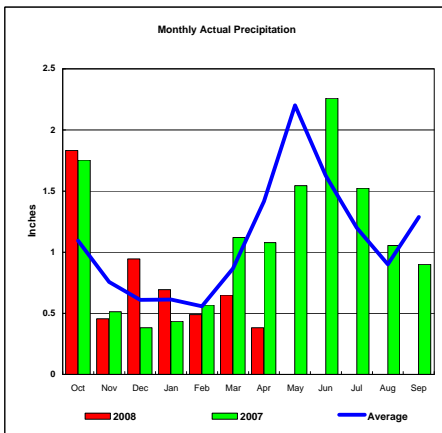


Total Actual Precipitation thru April (Inch.) - 2.36

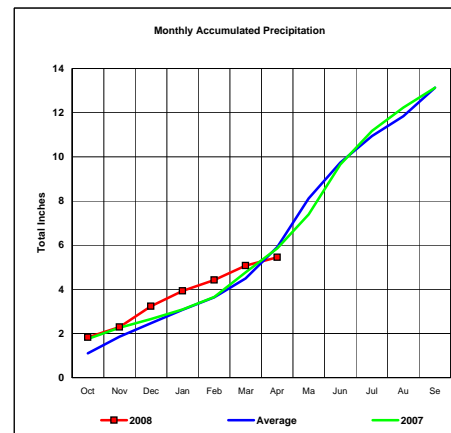


Total Average Precipitation thru April (Inch.) - 4.97  
Percent of Average for April - 47.53%

**Bighorn River Basin**



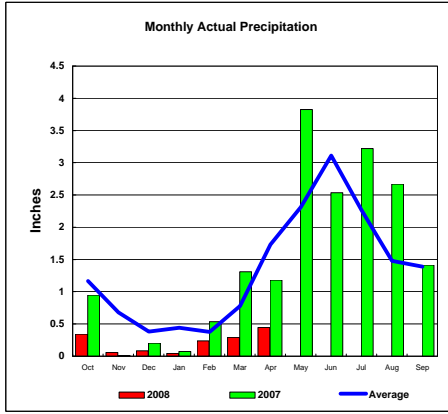
Total Actual Precipitation thru April (Inch.) - 5.45



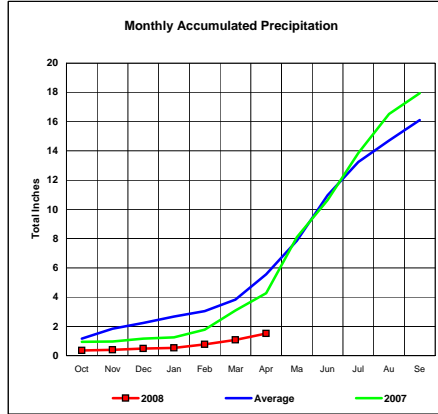
Total Average Precipitation thru April (Inch.) - 5.92  
Percent of Average for April - 92.10%

**BASIN PRECIPITATION - ACTUAL MONTHLY vs AVERAGE MONTHLY TOTALS**  
Data for the month of April 2008

**Heart River Basin**

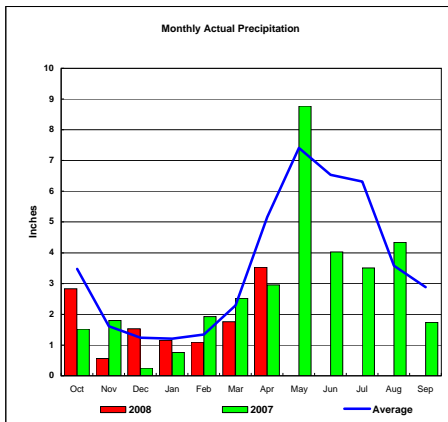


Total Actual Precipitation thru April (Inch.) - 1.51

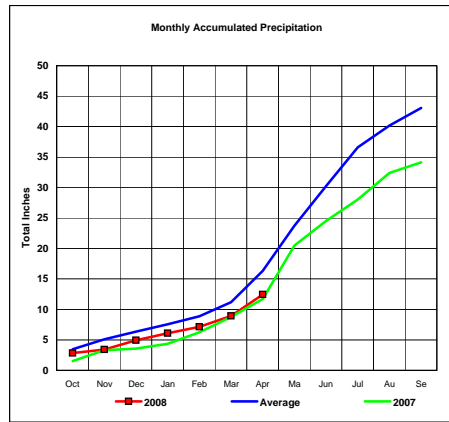


Total Average Precipitation thru April (Inch.) - 5.55  
Percent of Average for April - 27.21%

**Cheyenne River Basin**

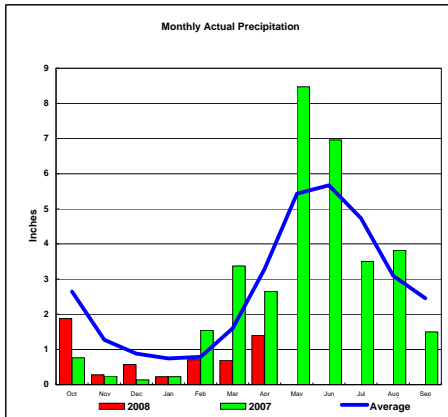


Total Actual Precipitation thru April (Inch.) - 12.45

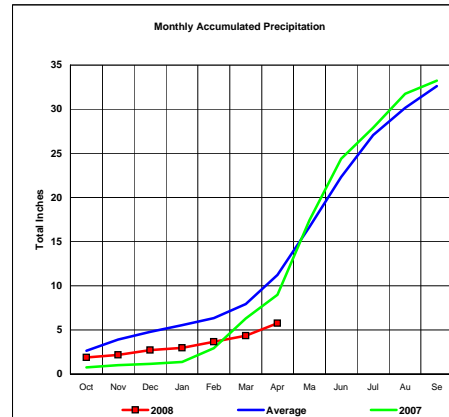


Total Average Precipitation thru April (Inch.) - 16.33  
Percent of Average for April - 76.25%

**Grand River Basin**



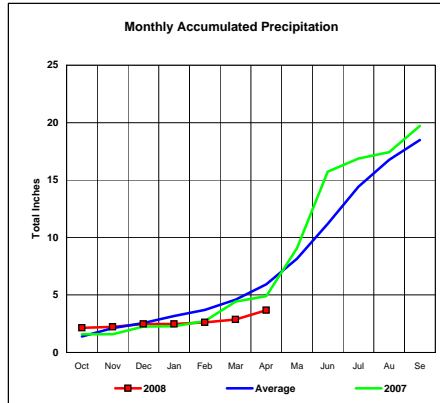
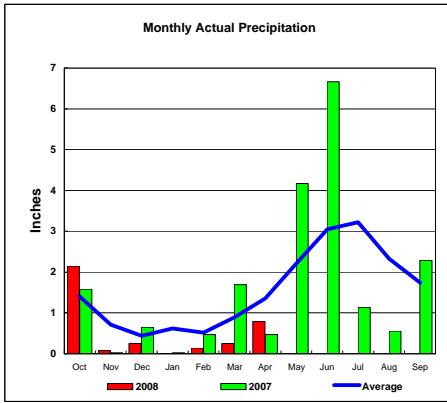
Total Actual Precipitation thru April (Inch.) - 5.76



Total Average Precipitation thru April (Inch.) - 11.23  
Percent of Average for April - 51.29%

**BASIN PRECIPITATION - ACTUAL MONTHLY vs AVERAGE MONTHLY TOTALS**  
 Data for the month of April 2008

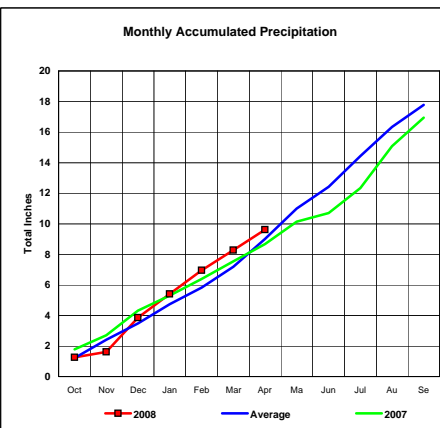
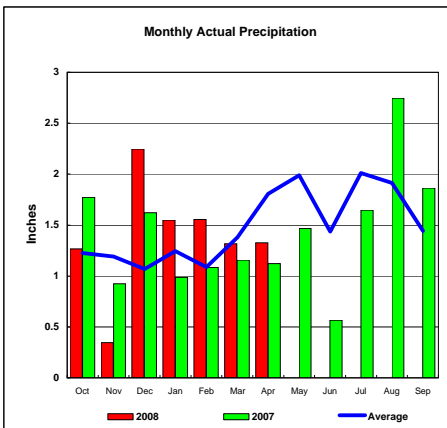
**James River Basin**



Total Actual Precipitation thru April (Inch.) - 3.67

Total Average Precipitation thru April (Inch.) - 5.94  
 Percent of Average for April - 61.78%

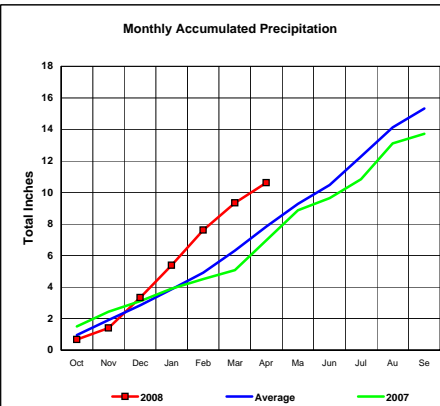
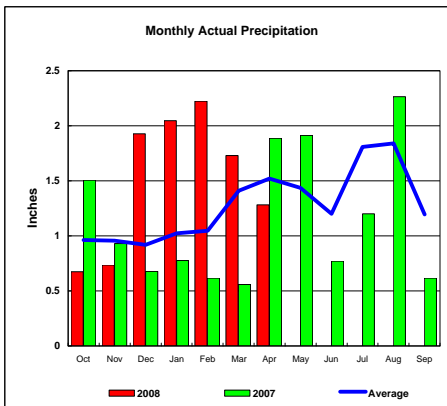
**Colorado-Big Thompson Project**



Total Actual Precipitation thru April (Inch.) - 9.60

Total Average Precipitation thru April (Inch.) - 9.00  
 Percent of Average for April - 106.72%

**Fryingpan-Arkansas Project**

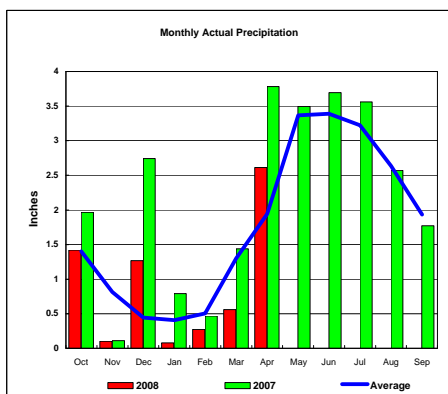


Total Actual Precipitation thru April (Inch.) - 10.62

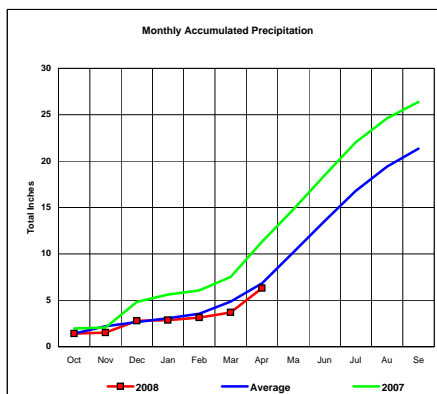
Total Average Precipitation thru April (Inch.) - 7.84  
 Percent of Average for April - 135.58%

**BASIN PRECIPITATION - ACTUAL MONTHLY vs AVERAGE MONTHLY TOTALS**  
 Data for the month of April 2008

**Republican River Basin**

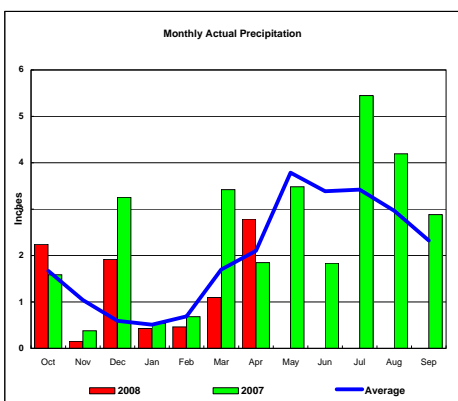


Total Actual Precipitation thru April (Inch.) - 6.31

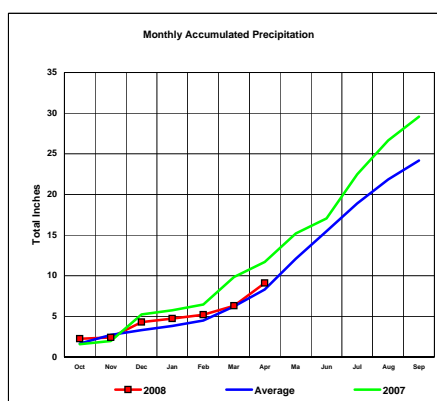


Total Average Precipitation thru April (Inch.) - 6.81  
 Percent of Average for April - 92.66%

**Solomon River Basin**

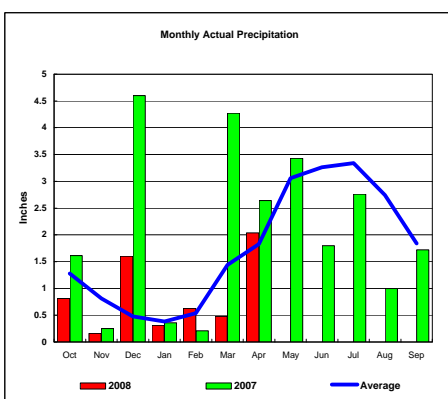


Total Actual Precipitation thru April (Inch.) - 9.09

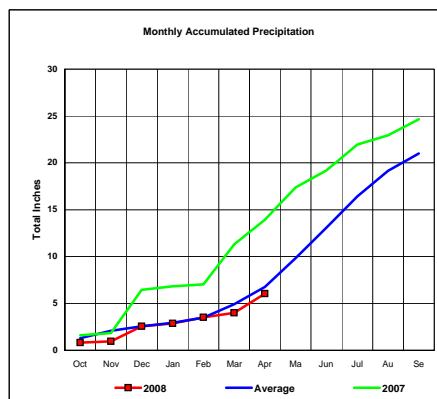


Total Average Precipitation thru April (Inch.) - 8.31  
 Percent of Average for April - 109.35%

**Smoky Hill River Basin**



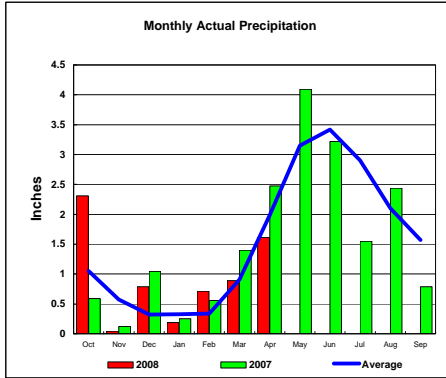
Total Actual Precipitation thru April (Inch.) - 6.03



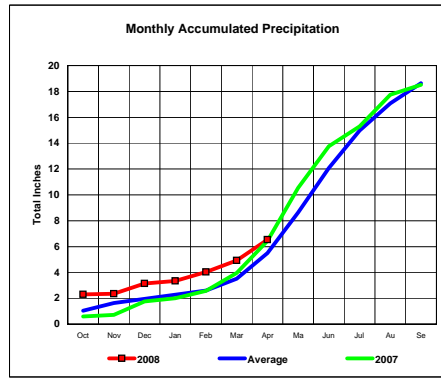
Total Average Precipitation thru April (Inch.) - 6.76  
 Percent of Average for April - 89.20%

**BASIN PRECIPITATION - ACTUAL MONTHLY vs AVERAGE MONTHLY TOTALS**  
 Data for the month of April 2008

**Niobrara River Basin**

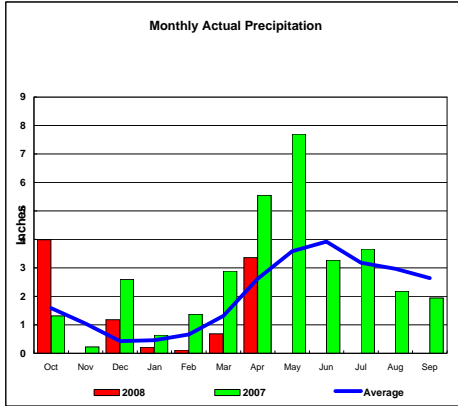


Total Actual Precipitation thru April (Inch.) - 6.54

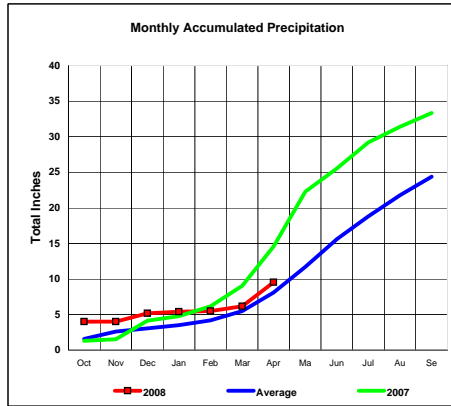


Total Average Precipitation thru April (Inch.) - 5.50  
 Percent of Average for April - 118.91%

**Lower Platte River Basin**

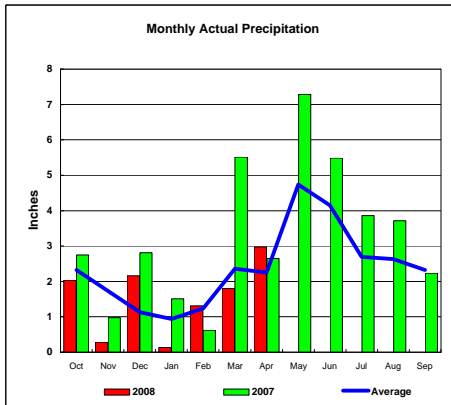


Total Actual Precipitation thru April (Inch.) - 9.54

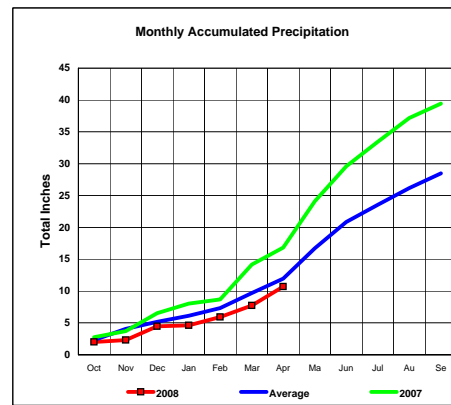


Total Average Precipitation thru April (Inch.) - 8.11  
 Percent of Average for April - 117.64%

**Arkansas River Basin**



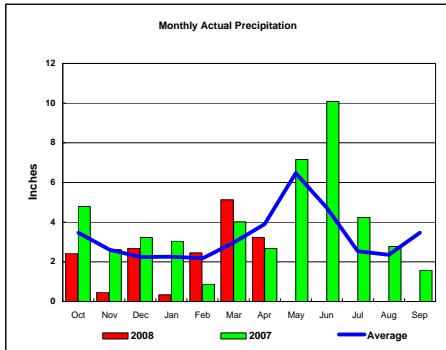
Total Actual Precipitation thru April (Inch.) - 10.70



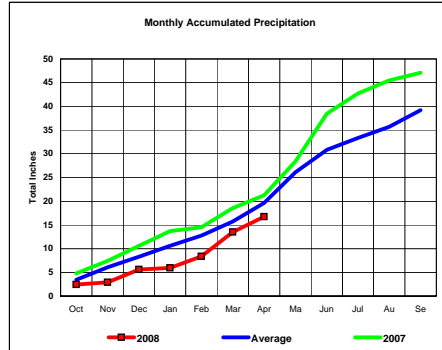
Total Average Precipitation thru April (Inch.) - 11.96  
 Percent of Average for April - 89.47%

**BASIN PRECIPITATION - ACTUAL MONTHLY vs AVERAGE MONTHLY TOTALS**  
Data for the month of April 2008

**Red River Basin**

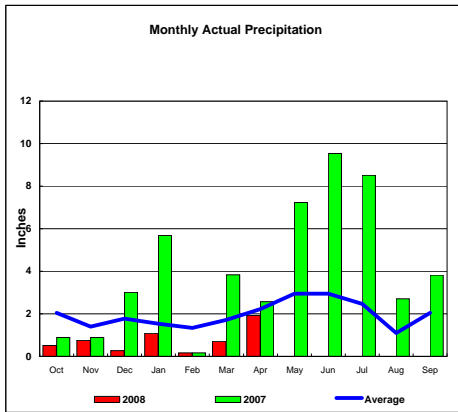


Total Actual Precipitation thru April (Inch.) - 16.75

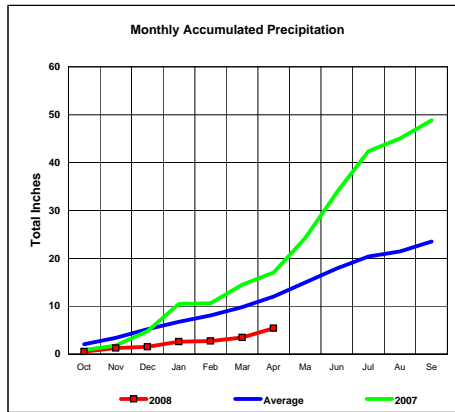


Total Average Precipitation thru April (Inch.) - 19.65  
Percent of Average for April - 85.26%

**Nueces River Basin**

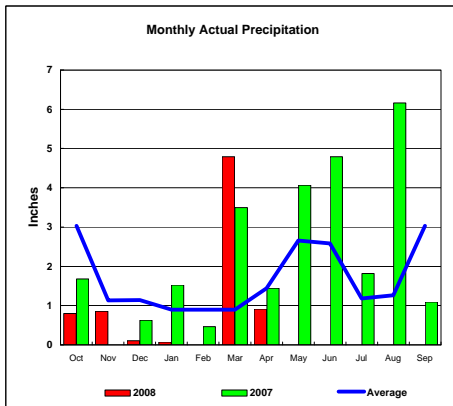


Total Actual Precipitation thru April (Inch.) - 5.40

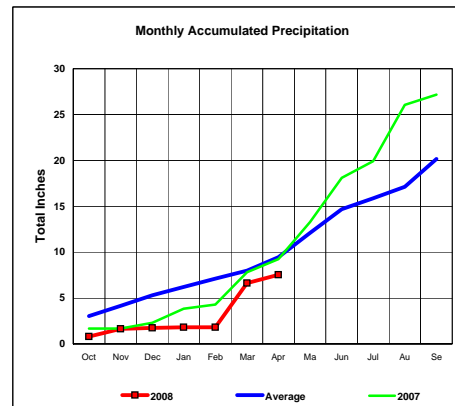


Total Average Precipitation thru April (Inch.) - 12.03  
Percent of Average for April - 44.89%

**Colorado River Basin**



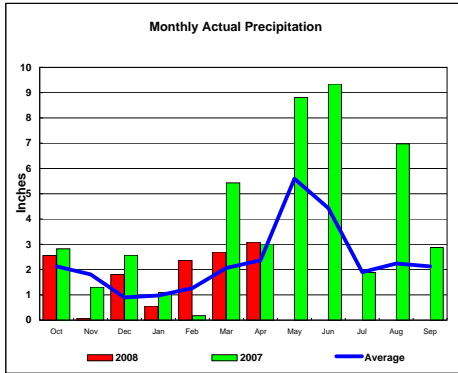
Total Actual Precipitation thru April (Inch.) - 7.54



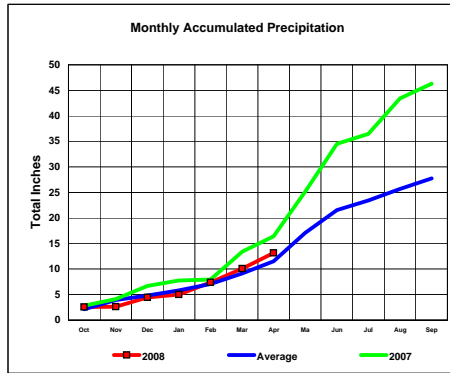
Total Average Precipitation thru April (Inch.) - 9.45  
Percent of Average for April - 79.78%

**BASIN PRECIPITATION - ACTUAL MONTHLY vs AVERAGE MONTHLY TOTALS**  
 Data for the month of April 2008

**Washita River Basin**

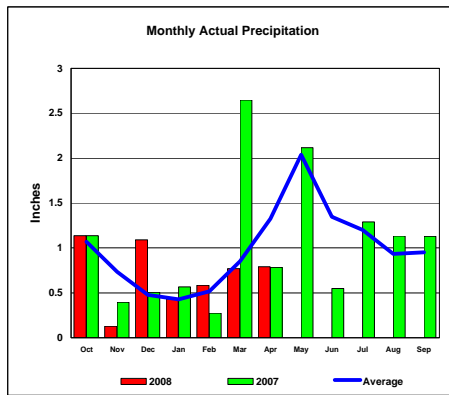


Total Actual Precipitation thru April (Inch.) - 13.15

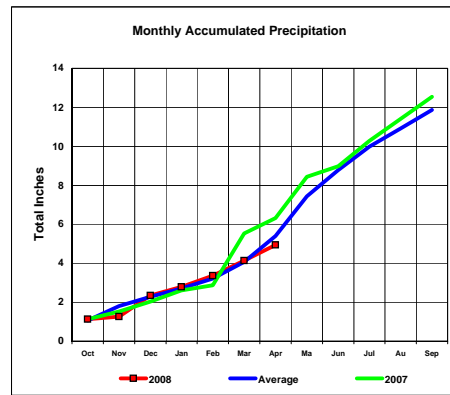


Total Average Precipitation thru April (Inch.) - 11.51  
 Percent of Average for April - 114.30%

**North Platte River Basin**



Total Actual Precipitation thru April (Inch.) - 4.94



Total Average Precipitation thru April (Inch.) - 5.40  
 Percent of Average for April - 91.43%