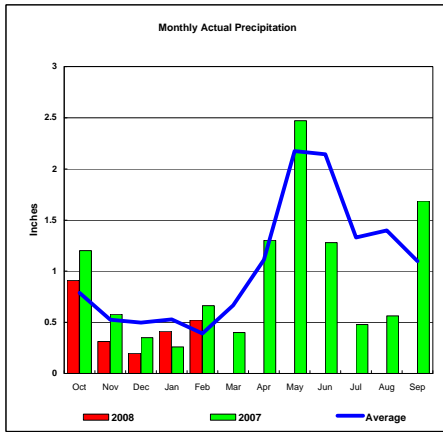
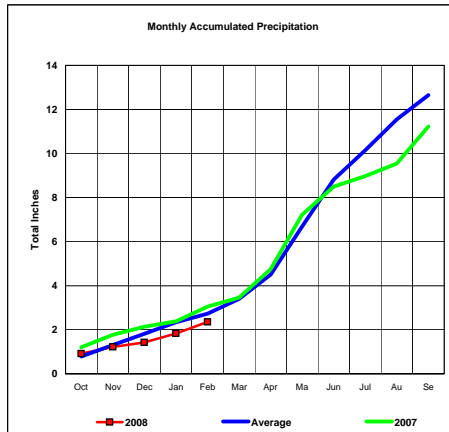


**BASIN PRECIPITATION - ACTUAL MONTHLY vs AVERAGE MONTHLY TOTALS**  
**Data for the month of February 2008**

**Upper Missouri River Basin**

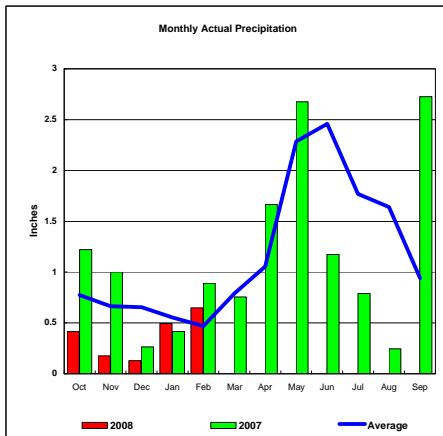


Total Actual Precipitation thru Feb (Inch.) - 2.36

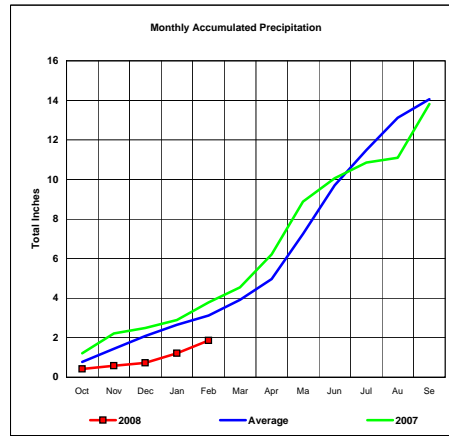


Total Average Precipitation thru Feb (Inch.) - 2.73  
 Percent of Average for February - 86.26%

**Milk River Basin**

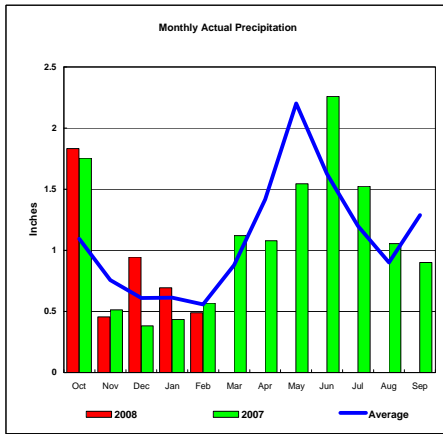


Total Actual Precipitation thru Feb (Inch.) - 1.87

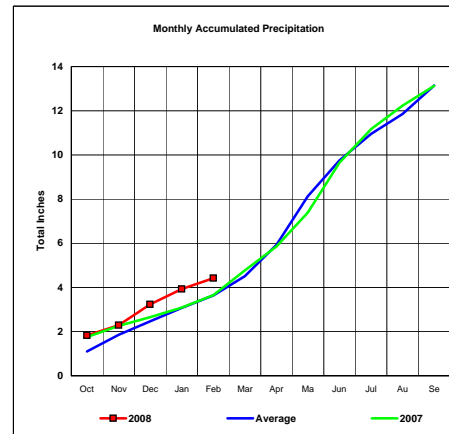


Total Average Precipitation thru Feb (Inch.) - 3.12  
 Percent of Average for February - 59.78%

**Bighorn River Basin**



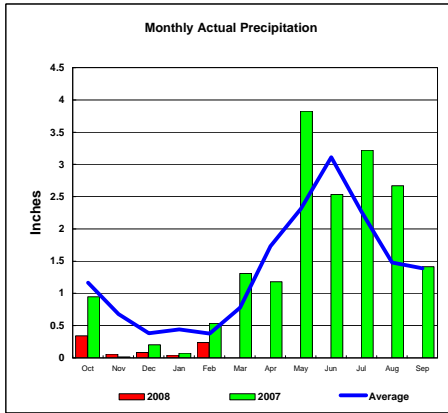
Total Actual Precipitation thru Feb (Inch.) - 4.42



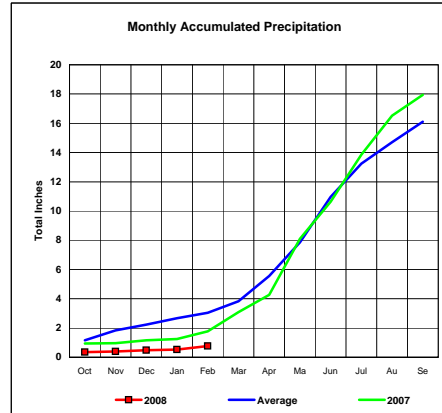
Total Average Precipitation thru Feb (Inch.) - 3.63  
 Percent of Average for February - 121.61%

**BASIN PRECIPITATION - ACTUAL MONTHLY vs AVERAGE MONTHLY TOTALS**  
Data for the month of February 2008

**Heart River Basin**

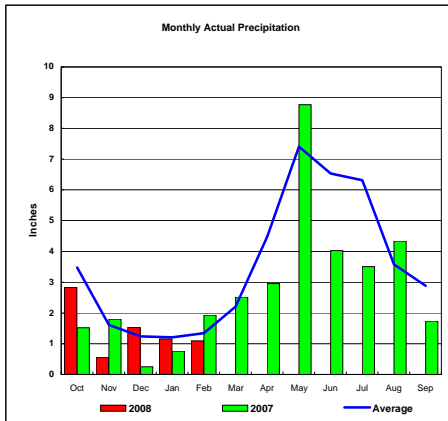


Total Actual Precipitation thru Feb (Inch.) - 0.77

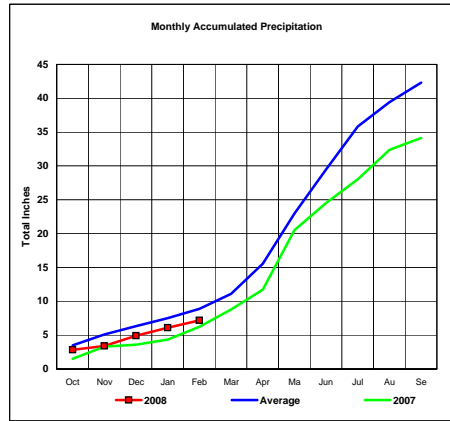


Total Average Precipitation thru Feb (Inch.) - 3.04  
Percent of Average for February - 25.33%

**Cheyenne River Basin**

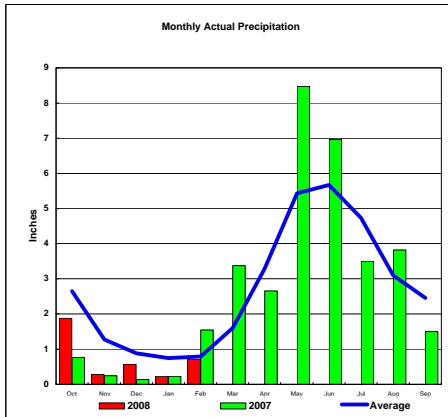


Total Actual Precipitation thru Feb (Inch.) - 7.17

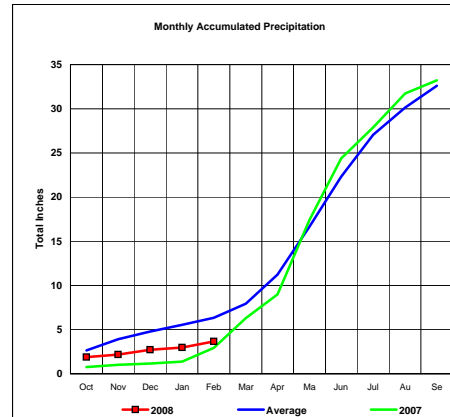


Total Average Precipitation thru Feb (Inch.) - 8.88  
Percent of Average for February - 80.68%

**Grand River Basin**



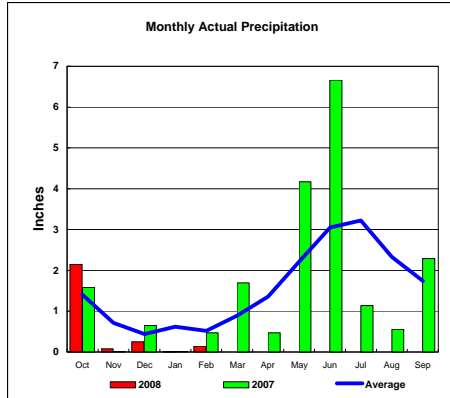
Total Actual Precipitation thru Feb (Inch.) - 3.67



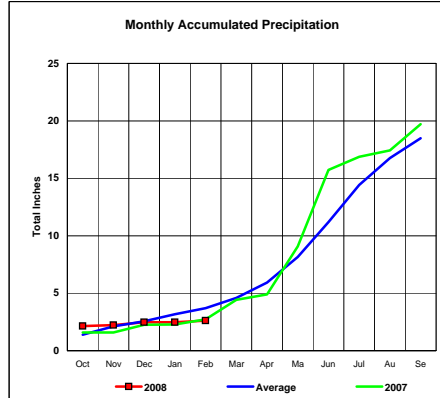
Total Average Precipitation thru Feb (Inch.) - 6.34  
Percent of Average for February - 57.89%

**BASIN PRECIPITATION - ACTUAL MONTHLY vs AVERAGE MONTHLY TOTALS**  
Data for the month of February 2008

**James River Basin**

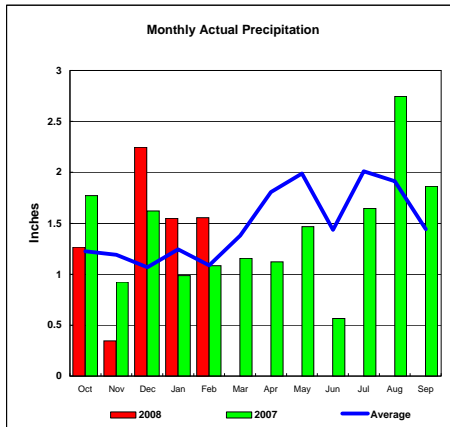


Total Actual Precipitation thru Feb (Inch.) - 2.63

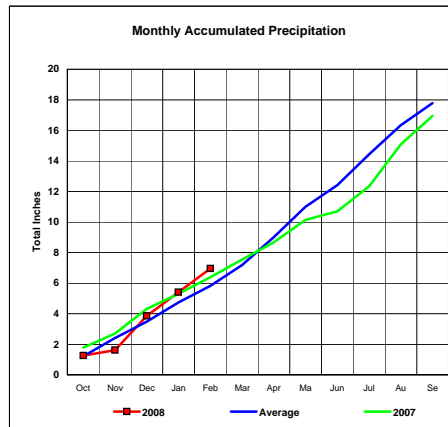


Total Average Precipitation thru Feb (Inch.) - 3.69  
Percent of Average for February - 71.27%

**Colorado-Big Thompson Project**

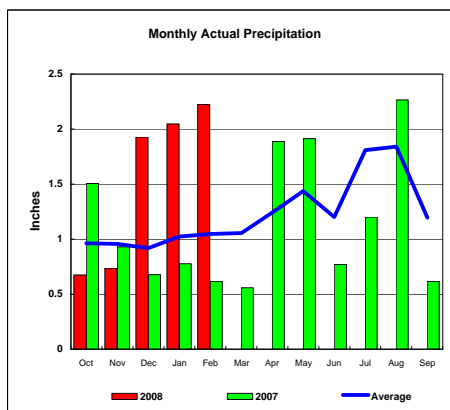


Total Actual Precipitation thru Feb (Inch.) - 6.96

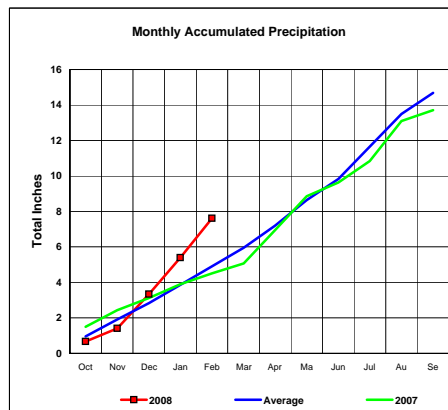


Total Average Precipitation thru Feb (Inch.) - 5.81  
Percent of Average for February - 119.74%

**Fryingpan-Arkansas Project**



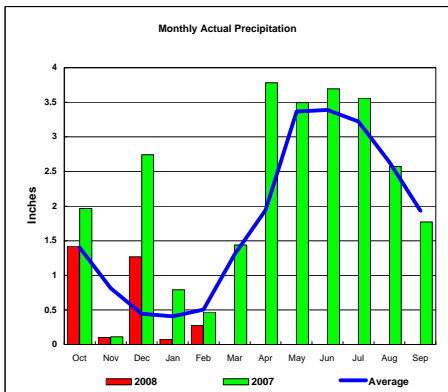
Total Actual Precipitation thru Feb (Inch.) - 7.61



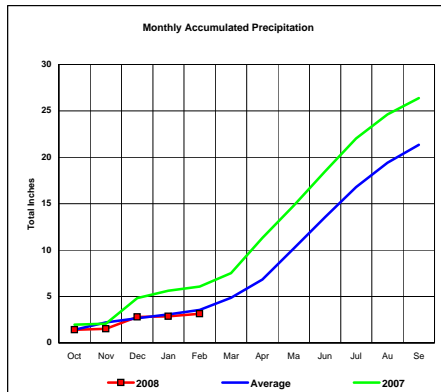
Total Average Precipitation thru Feb (Inch.) - 4.91  
Percent of Average for February - 155.15%

**BASIN PRECIPITATION - ACTUAL MONTHLY vs AVERAGE MONTHLY TOTALS**  
Data for the month of February 2008

**Republican River Basin**

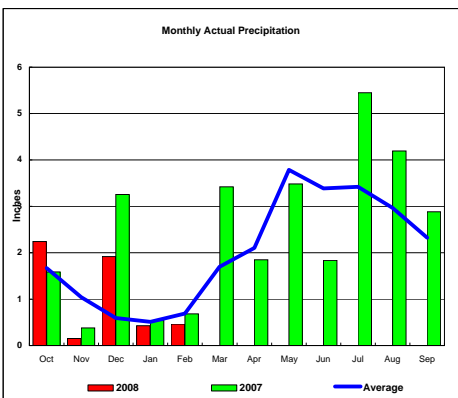


Total Actual Precipitation thru Feb (Inch.) - 3.14

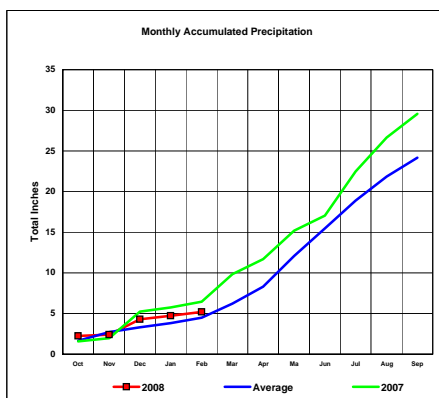


Total Average Precipitation thru Feb (Inch.) - 3.57  
Percent of Average for February - 87.87%

**Solomon River Basin**

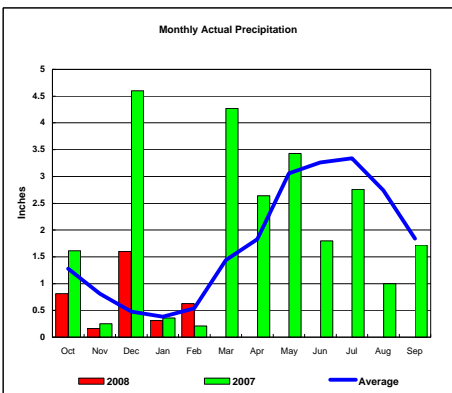


Total Actual Precipitation thru Feb (Inch.) - 5.20

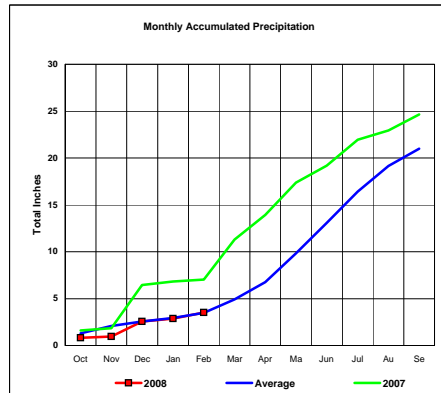


Total Average Precipitation thru Feb (Inch.) - 4.51  
Percent of Average for February - 115.46%

**Smoky Hill River Basin**



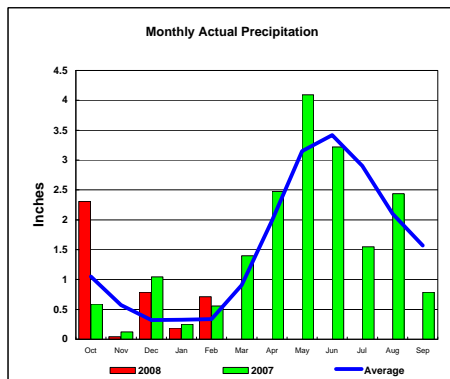
Total Actual Precipitation thru Feb (Inch.) - 3.51



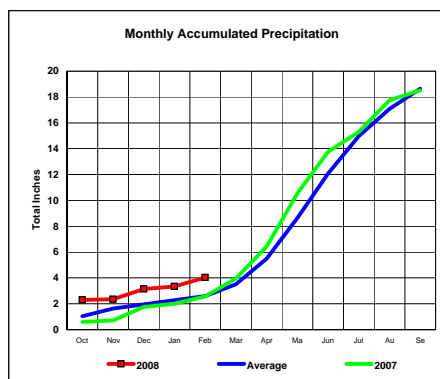
Total Average Precipitation thru Feb (Inch.) - 3.49  
Percent of Average for February - 100.57%

**BASIN PRECIPITATION - ACTUAL MONTHLY vs AVERAGE MONTHLY TOTALS**  
 Data for the month of February 2008

**Niobrara River Basin**

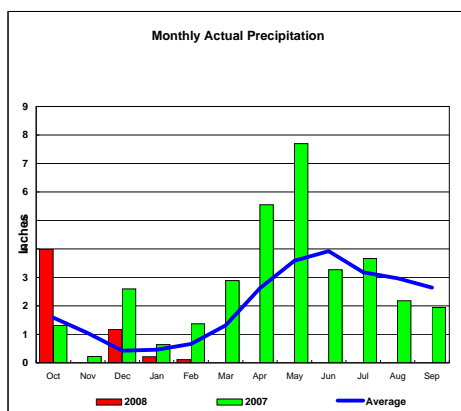


Total Actual Precipitation thru Feb (Inch.) - 4.04

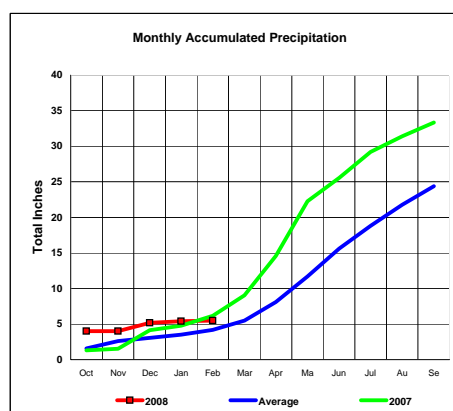


Total Average Precipitation thru Feb (Inch.) - 2.61  
 Percent of Average for February - 154.79%

**Lower Platte River Basin**

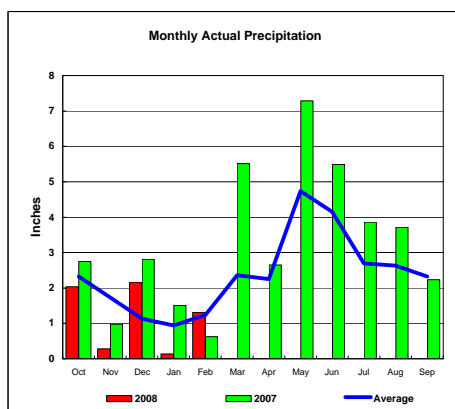


Total Actual Precipitation thru Feb (Inch.) - 5.50

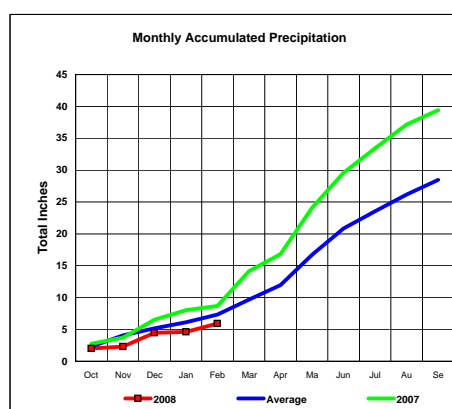


Total Average Precipitation thru Feb (Inch.) - 4.18  
 Percent of Average for February - 131.46%

**Arkansas River Basin**



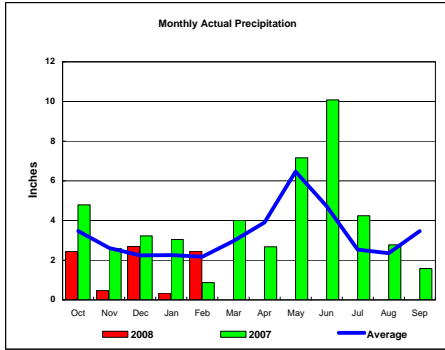
Total Actual Precipitation thru Feb (Inch.) - 5.92



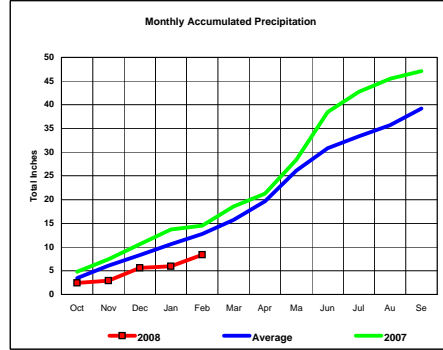
Total Average Precipitation thru Feb (Inch.) - 7.36  
 Percent of Average for February - 80.52%

**BASIN PRECIPITATION - ACTUAL MONTHLY vs AVERAGE MONTHLY TOTALS**  
Data for the month of February 2008

**Red River Basin**

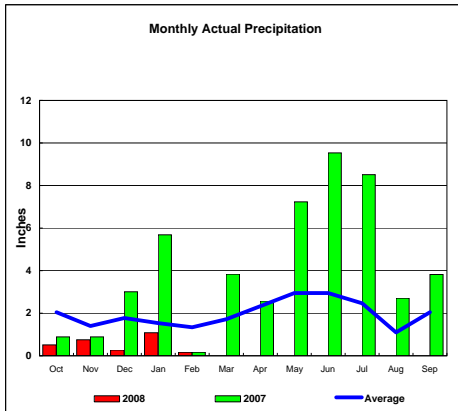


Total Actual Precipitation thru Feb (Inch.) - 8.39

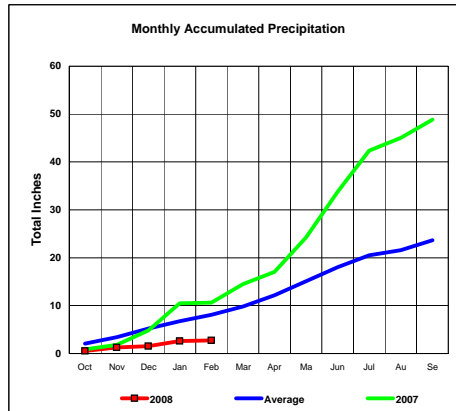


Total Average Precipitation thru Feb (Inch.) - 12.77  
Percent of Average for February - 65.67%

**Nueces River Basin**

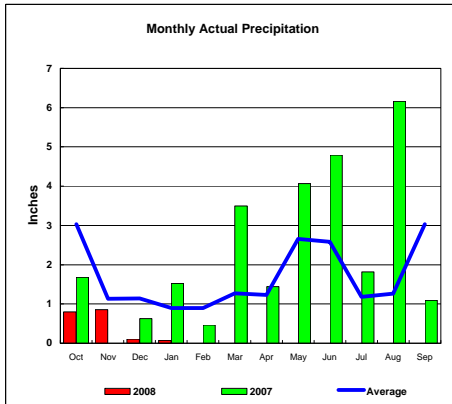


Total Actual Precipitation thru Feb (Inch.) - 2.77

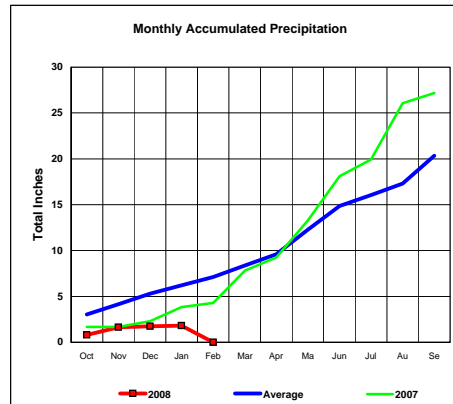


Total Average Precipitation thru Feb (Inch.) - 8.08  
Percent of Average for February - 34.28%

**Colorado River Basin**



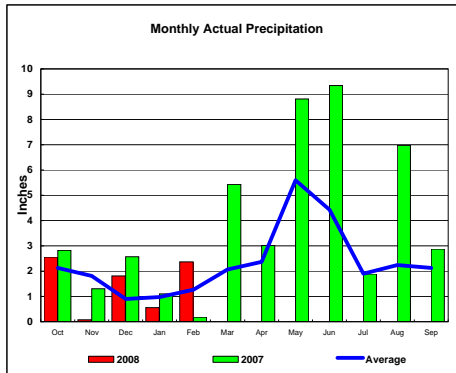
Total Actual Precipitation thru Feb (Inch.) - #DIV/0!



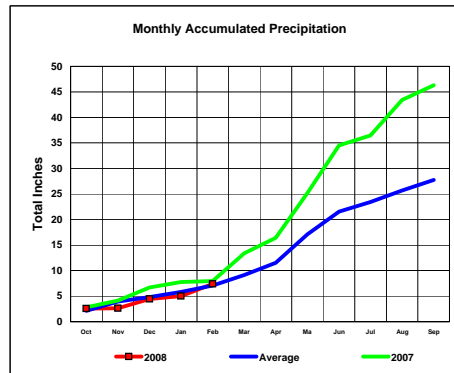
Total Average Precipitation thru Feb (Inch.) - 7.11  
Percent of Average for February - #DIV/0!

**BASIN PRECIPITATION - ACTUAL MONTHLY vs AVERAGE MONTHLY TOTALS**  
Data for the month of February 2008

**Washita River Basin**

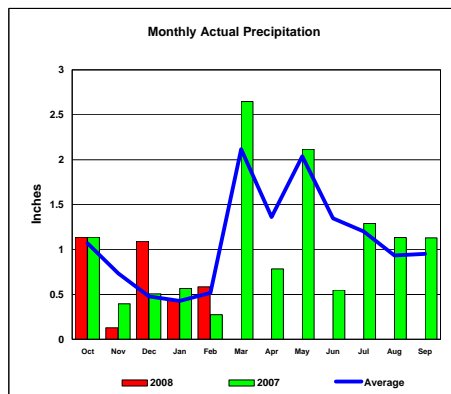


Total Actual Precipitation thru Feb (Inch.) - 7.38

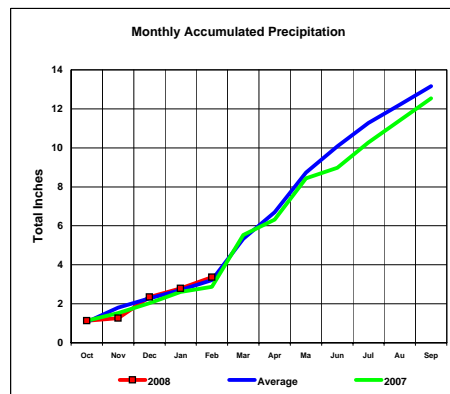


Total Average Precipitation thru Feb (Inch.) - 7.08  
Percent of Average for February - 104.24%

**North Platte River Basin**



Total Actual Precipitation thru Feb (Inch.) - 3.37



Total Average Precipitation thru Feb (Inch.) - 3.22  
Percent of Average for February - 104.65%