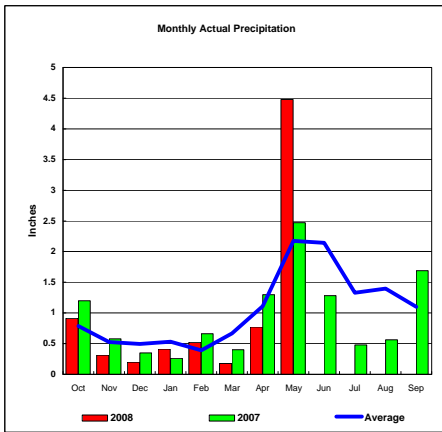
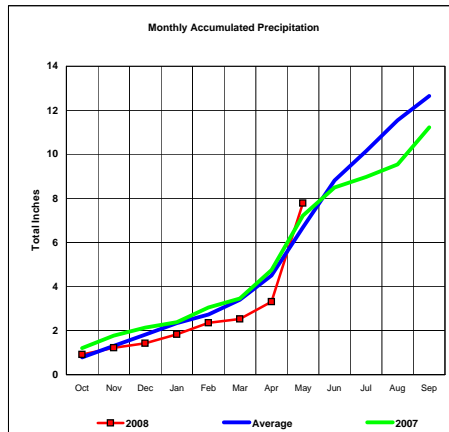


BASIN PRECIPITATION - ACTUAL MONTHLY vs AVERAGE MONTHLY TOTALS
 Data for the month of May 2008

Upper Missouri River Basin

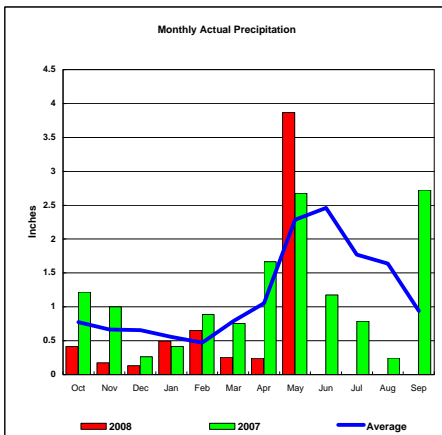


Total Actual Precipitation thru May (Inch.) - 7.78

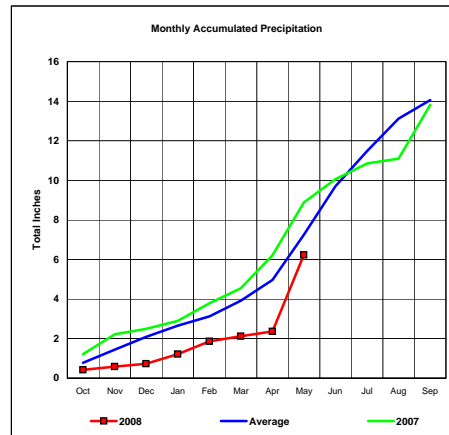


Total Average Precipitation thru May (Inch.) - 6.68
 Percent of Average for May - 116.50%

Milk River Basin

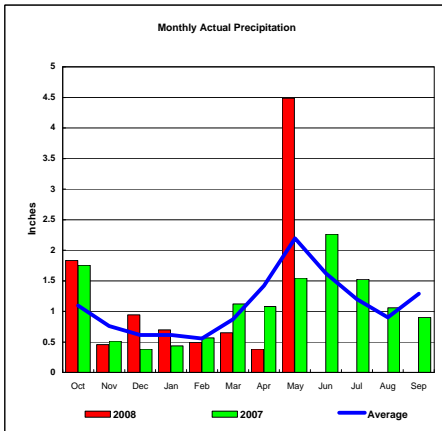


Total Actual Precipitation thru May (Inch.) - 6.23

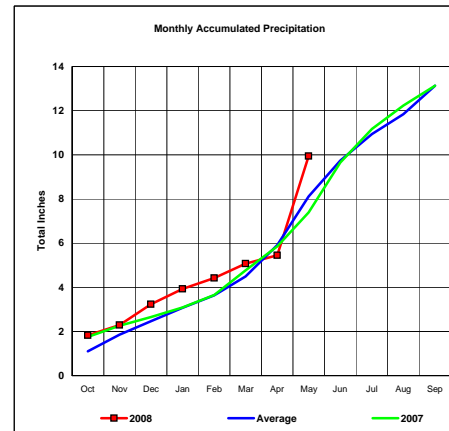


Total Average Precipitation thru May (Inch.) - 7.25
 Percent of Average for May - 85.86%

Bighorn River Basin



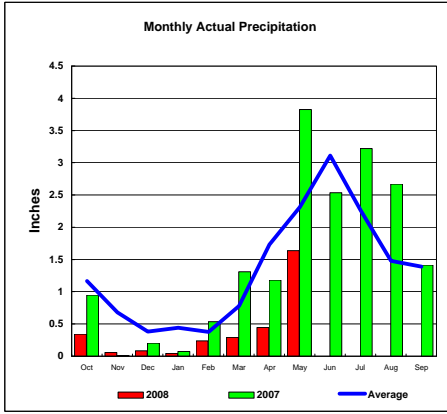
Total Actual Precipitation thru May (Inch.) - 9.94



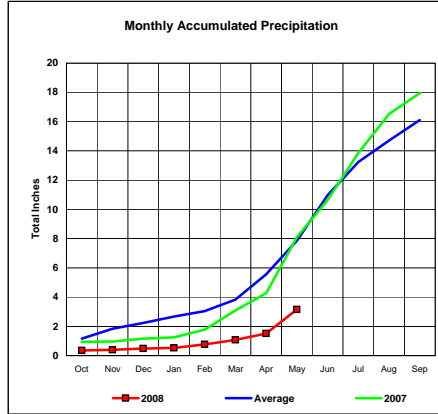
Total Average Precipitation thru May (Inch.) - 8.11
 Percent of Average for May - 122.47%

BASIN PRECIPITATION - ACTUAL MONTHLY vs AVERAGE MONTHLY TOTALS
 Data for the month of May 2008

Heart River Basin

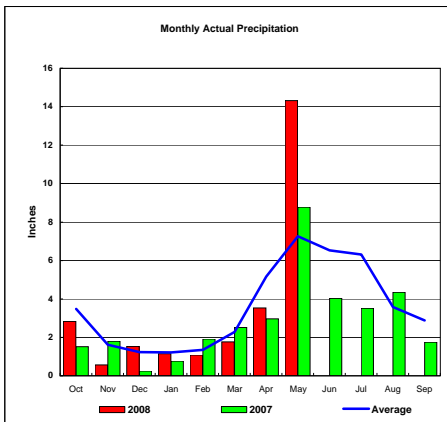


Total Actual Precipitation thru May (Inch.) - 3.15

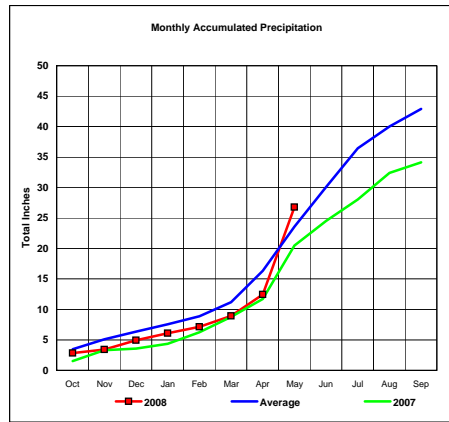


Total Average Precipitation thru May (Inch.) - 7.86
 Percent of Average for May - 40.01%

Cheyenne River Basin

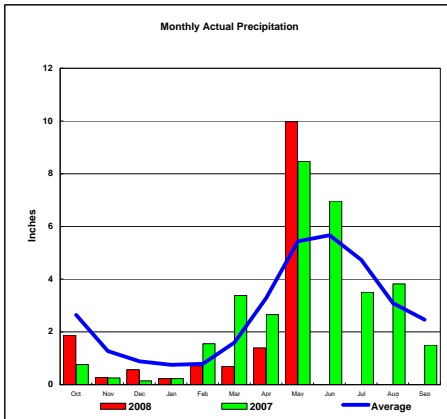


Total Actual Precipitation thru May (Inch.) - 26.77

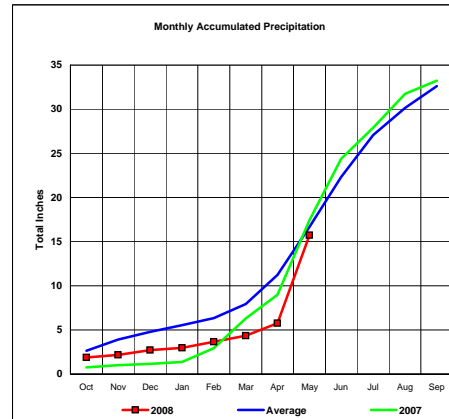


Total Average Precipitation thru May (Inch.) - 23.58
 Percent of Average for May - 113.52%

Grand River Basin



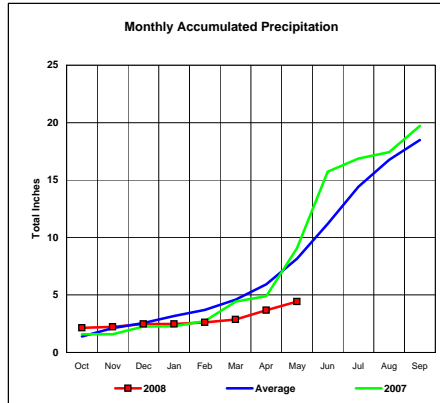
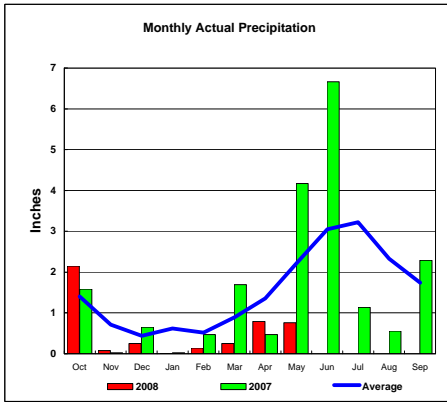
Total Actual Precipitation thru May (Inch.) - 15.73



Total Average Precipitation thru May (Inch.) - 16.66
 Percent of Average for May - 94.42%

BASIN PRECIPITATION - ACTUAL MONTHLY vs AVERAGE MONTHLY TOTALS
Data for the month of May 2008

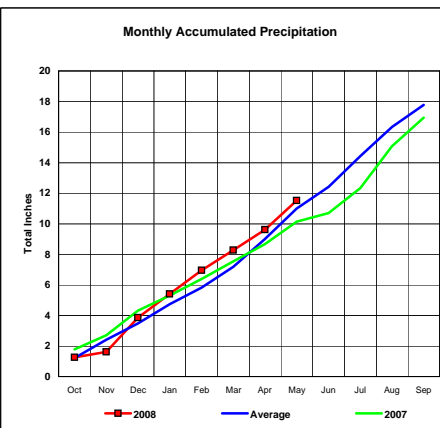
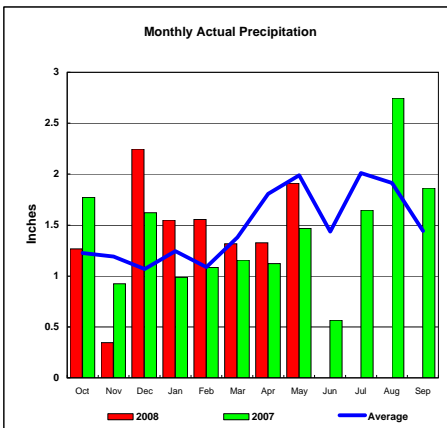
James River Basin



Total Actual Precipitation thru May (Inch.) - 4.43

Total Average Precipitation thru May (Inch.) - 8.15
Percent of Average for May - 54.36%

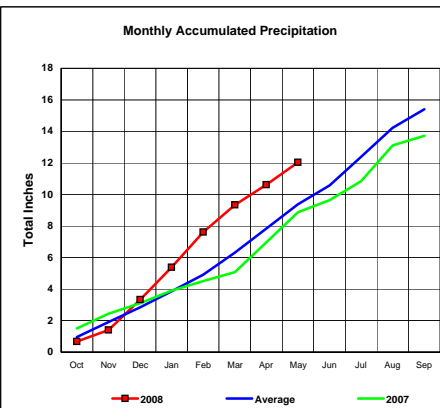
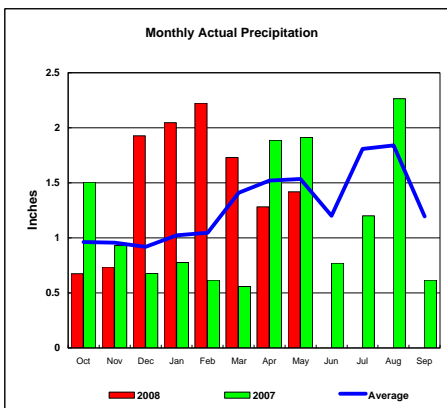
Colorado-Big Thompson Project



Total Actual Precipitation thru May (Inch.) - 11.51

Total Average Precipitation thru May (Inch.) - 10.99
Percent of Average for May - 104.78%

Fryingpan-Arkansas Project

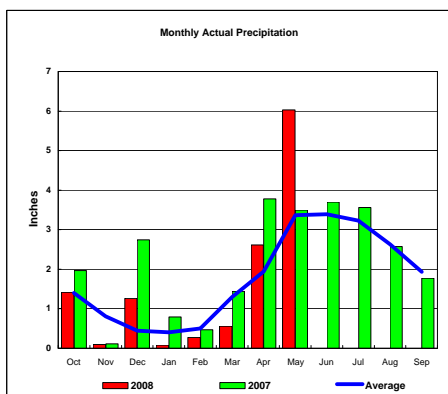


Total Actual Precipitation thru May (Inch.) - 12.04

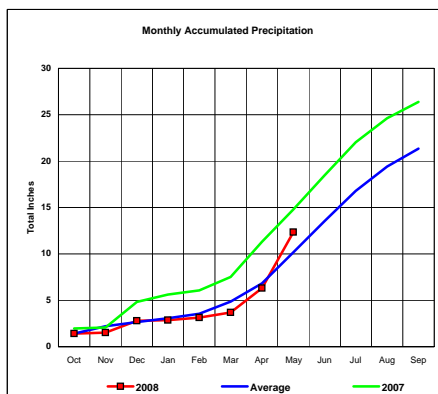
Total Average Precipitation thru May (Inch.) - 9.37
Percent of Average for May - 128.50%

BASIN PRECIPITATION - ACTUAL MONTHLY vs AVERAGE MONTHLY TOTALS
 Data for the month of May 2008

Republican River Basin

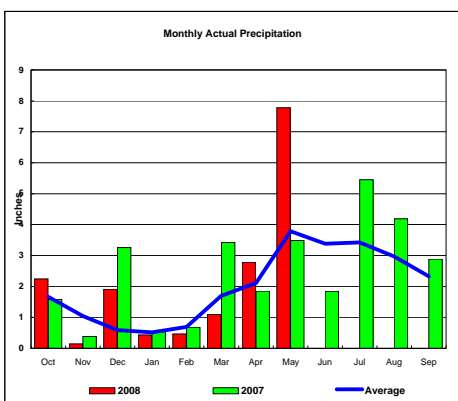


Total Actual Precipitation thru May (Inch.) - 12.34

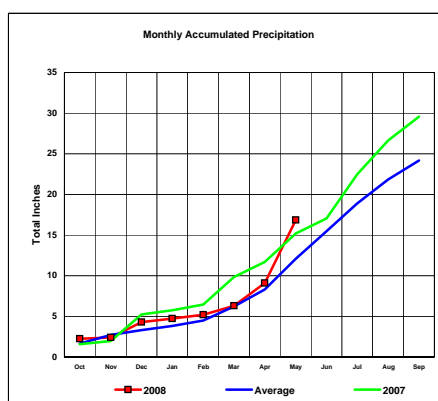


Total Average Precipitation thru May (Inch.) - 10.18
 Percent of Average for May - 121.22%

Solomon River Basin

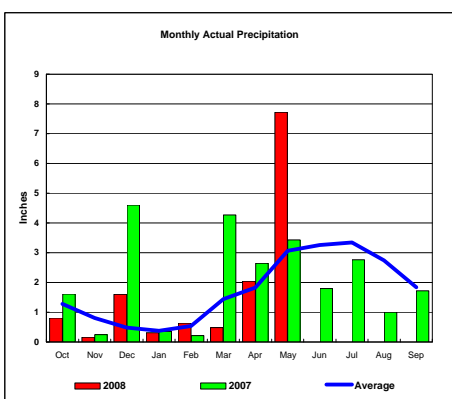


Total Actual Precipitation thru May (Inch.) - 16.87

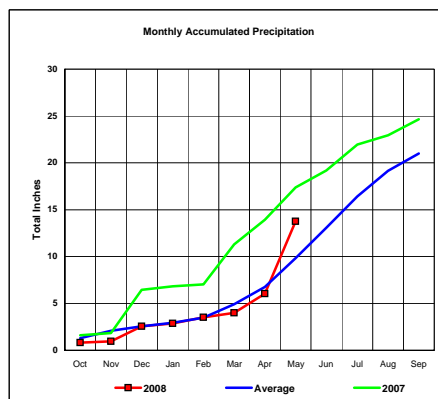


Total Average Precipitation thru May (Inch.) - 12.09
 Percent of Average for May - 139.50%

Smoky Hill River Basin



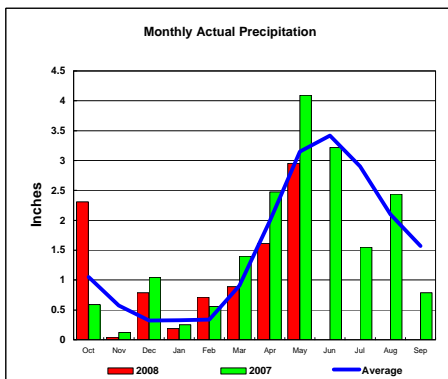
Total Actual Precipitation thru May (Inch.) - 13.75



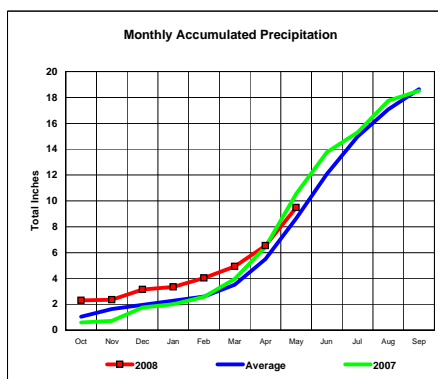
Total Average Precipitation thru May (Inch.) - 9.82
 Percent of Average for May - 140.02%

BASIN PRECIPITATION - ACTUAL MONTHLY vs AVERAGE MONTHLY TOTALS
 Data for the month of May 2008

Niobrara River Basin

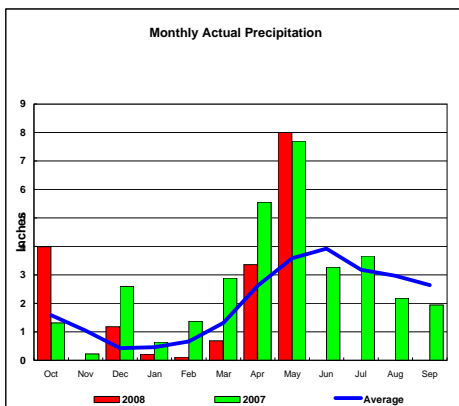


Total Actual Precipitation thru May (Inch.) - 9.49

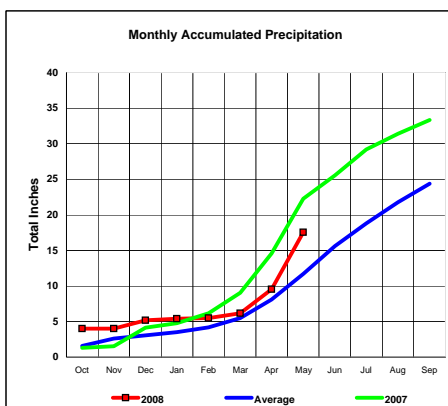


Total Average Precipitation thru May (Inch.) - 8.65
 Percent of Average for May - 109.71%

Lower Platte River Basin

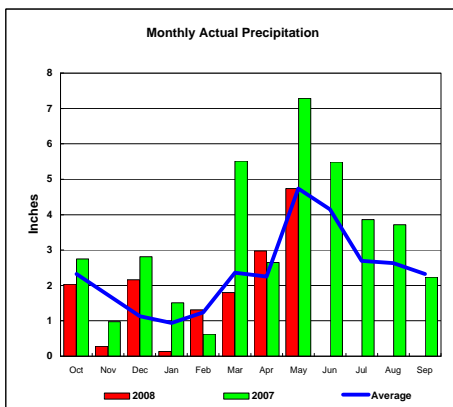


Total Actual Precipitation thru May (Inch.) - 17.53

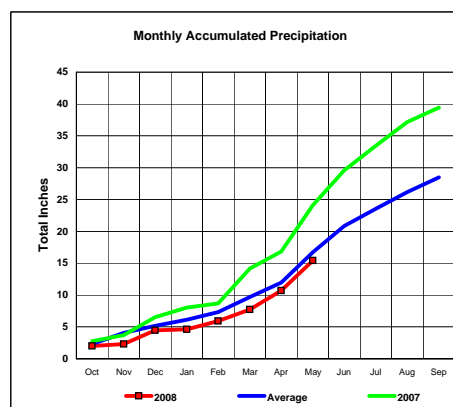


Total Average Precipitation thru May (Inch.) - 11.69
 Percent of Average for May - 149.96%

Arkansas River Basin



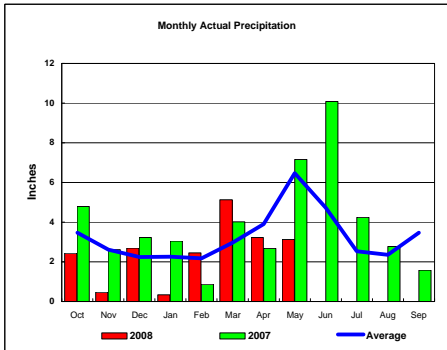
Total Actual Precipitation thru May (Inch.) - 15.44



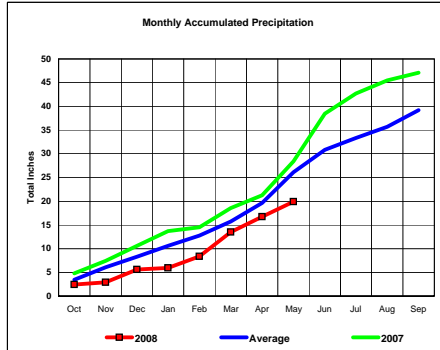
Total Average Precipitation thru May (Inch.) - 16.70
 Percent of Average for May - 92.48%

BASIN PRECIPITATION - ACTUAL MONTHLY vs AVERAGE MONTHLY TOTALS
 Data for the month of May 2008

Red River Basin

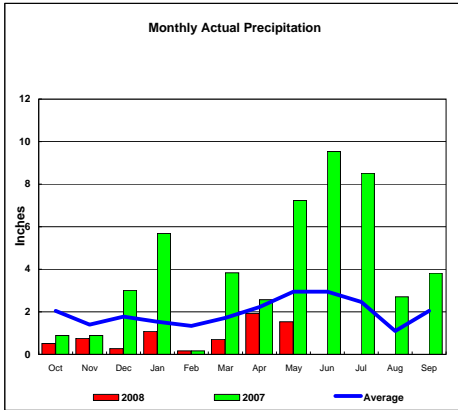


Total Actual Precipitation thru May (Inch.) - 19.88

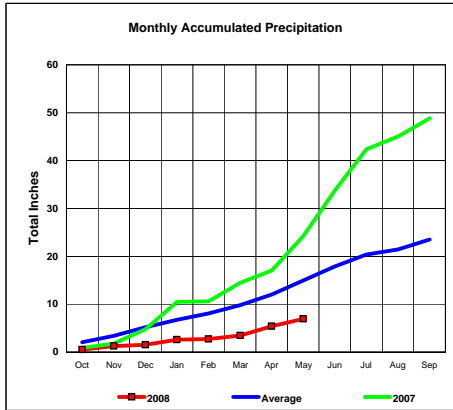


Total Average Precipitation thru May (Inch.) - 26.11
 Percent of Average for May - 76.13%

Nueces River Basin

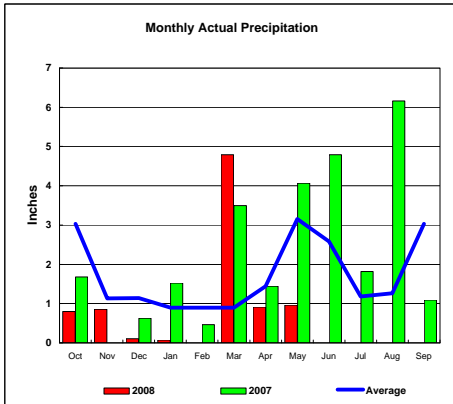


Total Actual Precipitation thru May (Inch.) - 6.93

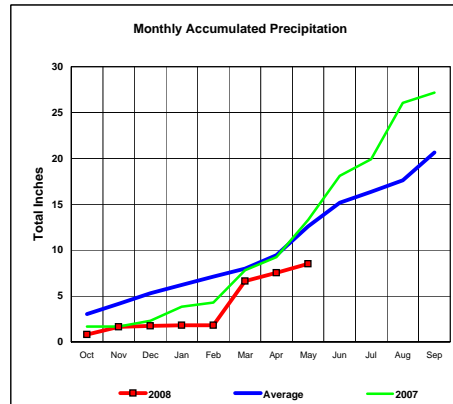


Total Average Precipitation thru May (Inch.) - 14.97
 Percent of Average for May - 46.29%

Colorado River Basin



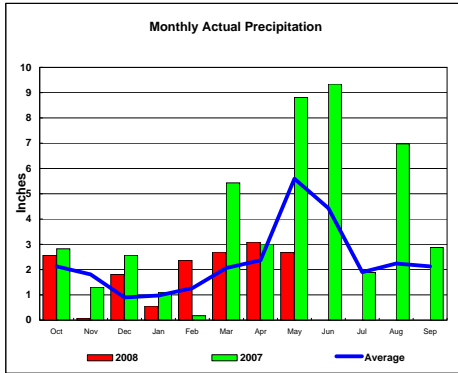
Total Actual Precipitation thru May (Inch.) - 8.50



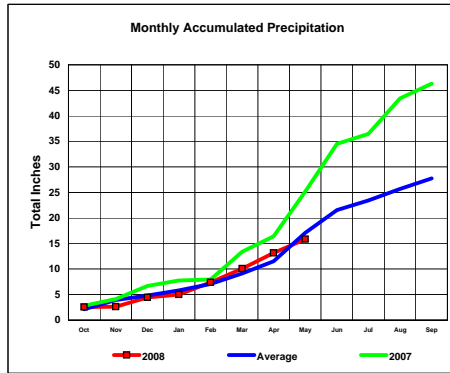
Total Average Precipitation thru May (Inch.) - 12.60
 Percent of Average for May - 67.42%

BASIN PRECIPITATION - ACTUAL MONTHLY vs AVERAGE MONTHLY TOTALS
 Data for the month of May 2008

Washita River Basin

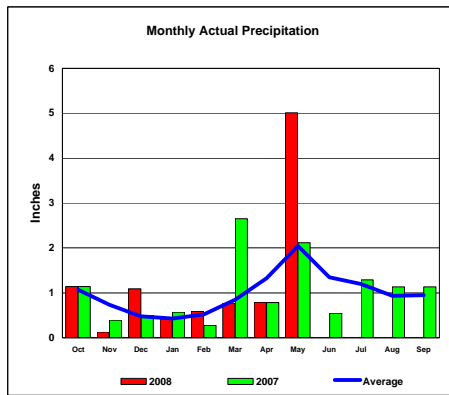


Total Actual Precipitation thru May (Inch.) - 15.83

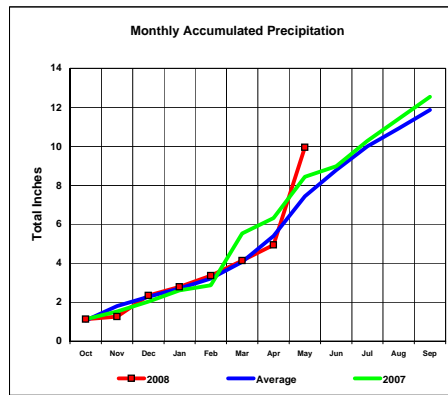


Total Average Precipitation thru May (Inch.) - 17.10
 Percent of Average for May - 92.60%

North Platte River Basin



Total Actual Precipitation thru May (Inch.) - 9.95



Total Average Precipitation thru May (Inch.) - 7.44
 Percent of Average for May - 133.70%