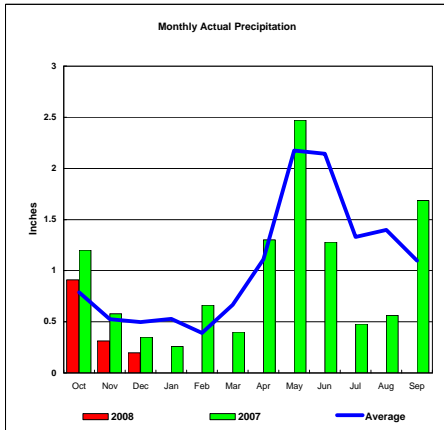
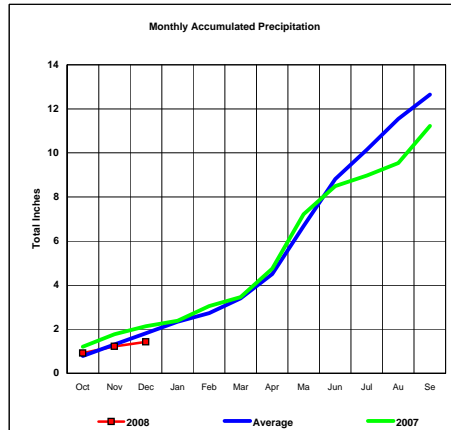


BASIN PRECIPITATION - ACTUAL MONTHLY vs AVERAGE MONTHLY TOTALS
Data for the month of December 2007

Upper Missouri River Basin

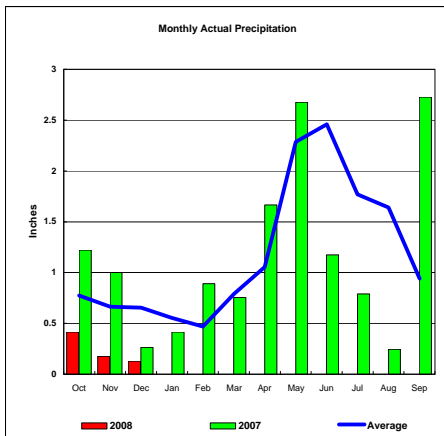


Total Actual Precipitation thru Dec (Inch.) - 1.42

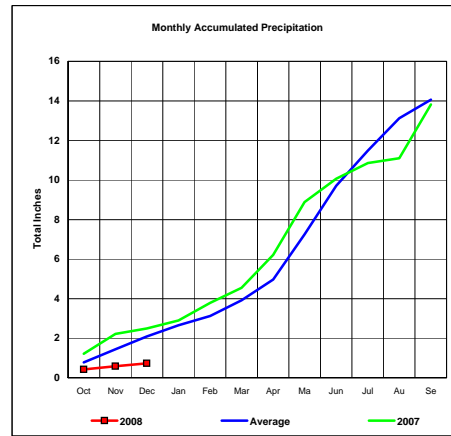


Total Average Precipitation thru Dec (Inch.) - 1.81
Percent of Average for December - 78.45%

Milk River Basin

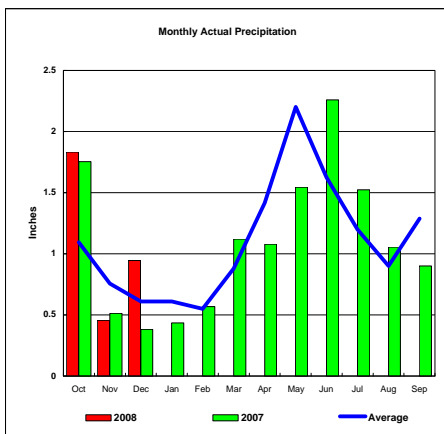


Total Actual Precipitation thru Dec (Inch.) - 0.72

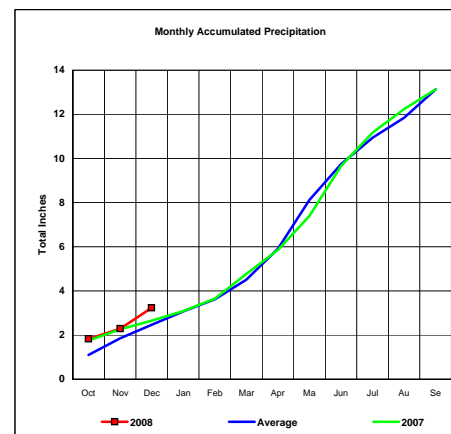


Total Average Precipitation thru Dec (Inch.) - 2.10
Percent of Average for December - 34.37%

Bighorn River Basin



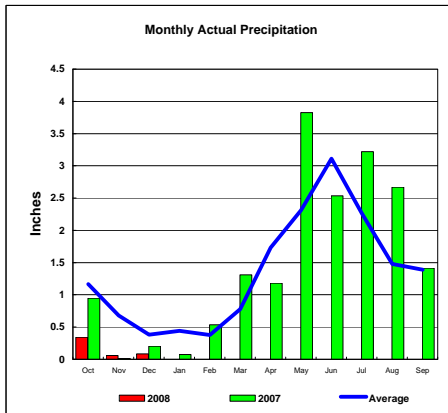
Total Actual Precipitation thru Dec (Inch.) - 3.23



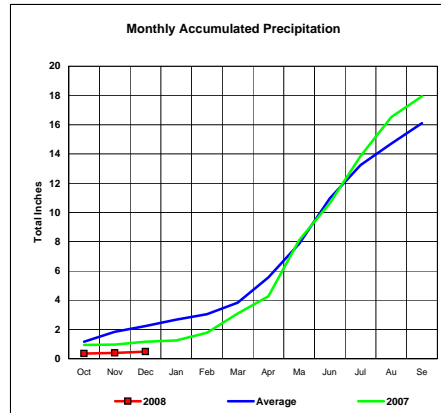
Total Average Precipitation thru Dec (Inch.) - 2.46
Percent of Average for December - 131.27%

BASIN PRECIPITATION - ACTUAL MONTHLY vs AVERAGE MONTHLY TOTALS
Data for the month of December 2007

Heart River Basin

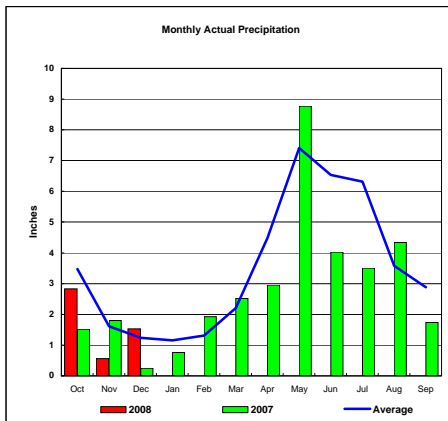


Total Actual Precipitation thru Dec (Inch.) - 0.49

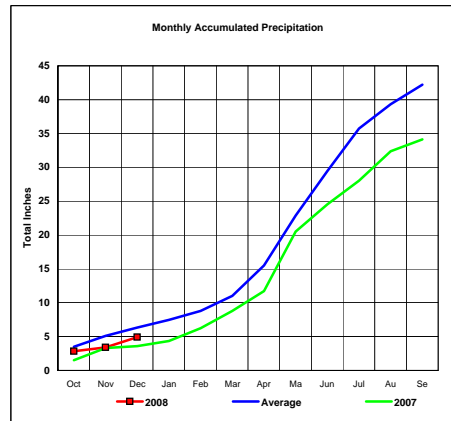


Total Average Precipitation thru Dec (Inch.) - 2.23
Percent of Average for December - 21.80%

Cheyenne River Basin

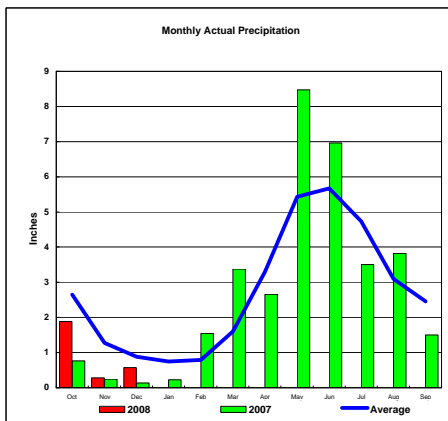


Total Actual Precipitation thru Dec (Inch.) - 4.92

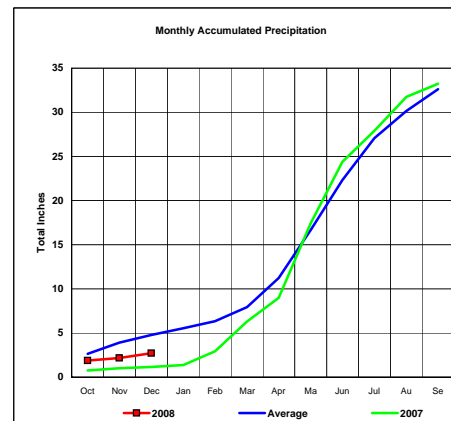


Total Average Precipitation thru Dec (Inch.) - 6.33
Percent of Average for December - 77.79%

Grand River Basin



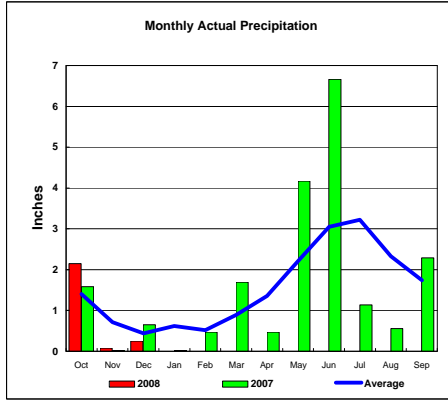
Total Actual Precipitation thru Dec (Inch.) - 2.73



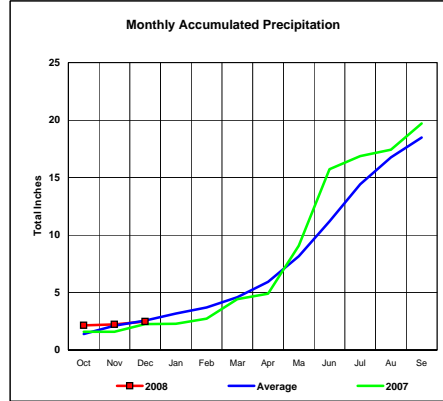
Total Average Precipitation thru Dec (Inch.) - 4.80
Percent of Average for December - 56.88%

BASIN PRECIPITATION - ACTUAL MONTHLY vs AVERAGE MONTHLY TOTALS
Data for the month of December 2007

James River Basin

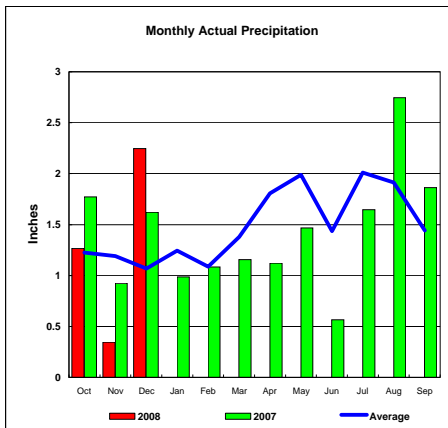


Total Actual Precipitation thru Dec (Inch.) - 2.48

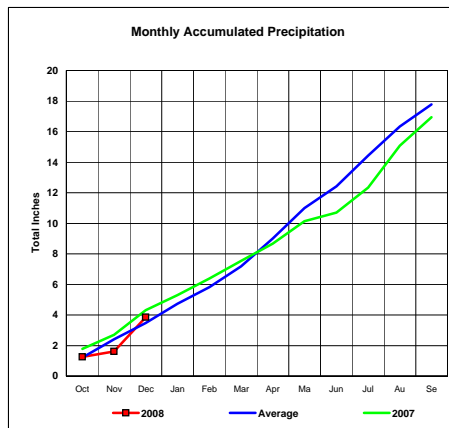


Total Average Precipitation thru Dec (Inch.) - 2.55
Percent of Average for December - 97.25%

Colorado-Big Thompson Project

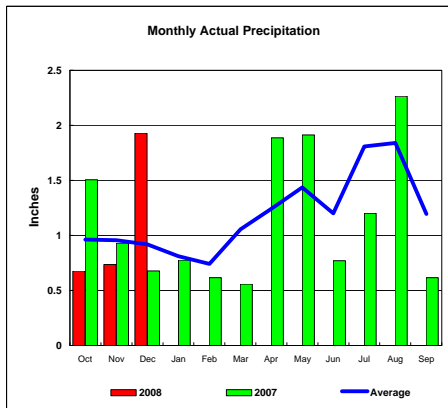


Total Actual Precipitation thru Dec (Inch.) - 3.86

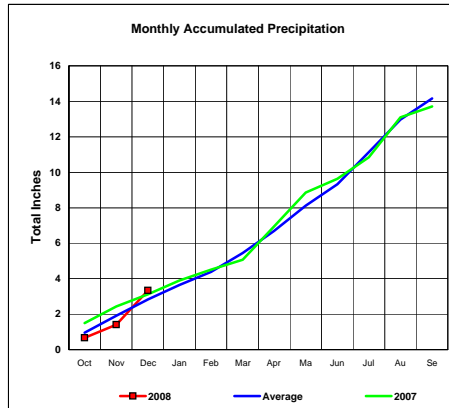


Total Average Precipitation thru Dec (Inch.) - 3.48
Percent of Average for December - 110.70%

Fryingpan-Arkansas Project



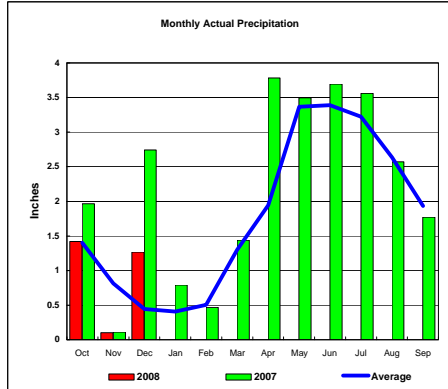
Total Actual Precipitation thru Dec (Inch.) - 3.34



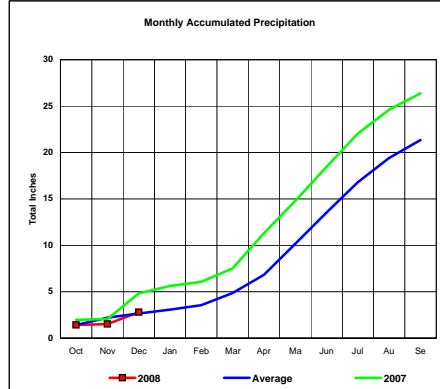
Total Average Precipitation thru Dec (Inch.) - 2.84
Percent of Average for December - 117.72%

BASIN PRECIPITATION - ACTUAL MONTHLY vs AVERAGE MONTHLY TOTALS
Data for the month of December 2007

Republican River Basin

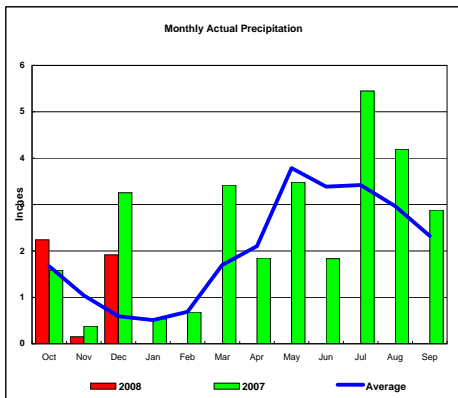


Total Actual Precipitation thru Dec (Inch.) - 2.78

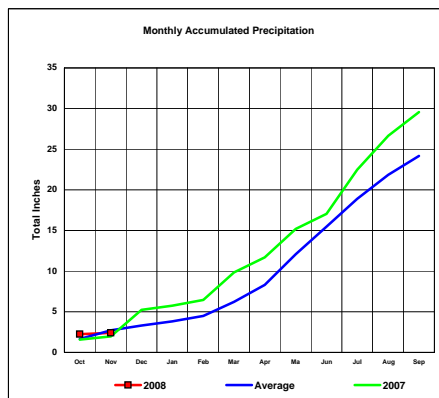


Total Average Precipitation thru Dec (Inch.) - 2.66
Percent of Average for December - 104.69%

Solomon River Basin

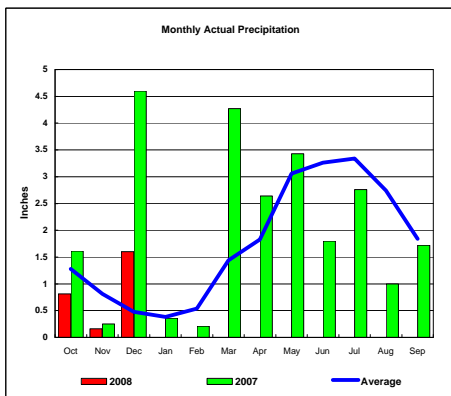


Total Actual Precipitation thru Dec (Inch.) - 4.31

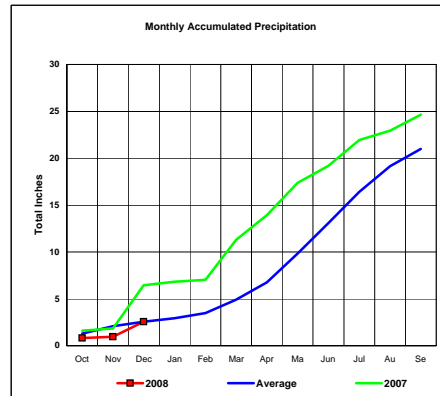


Total Average Precipitation thru Dec (Inch.) - 3.30
Percent of Average for December - 130.47%

Smoky Hill River Basin



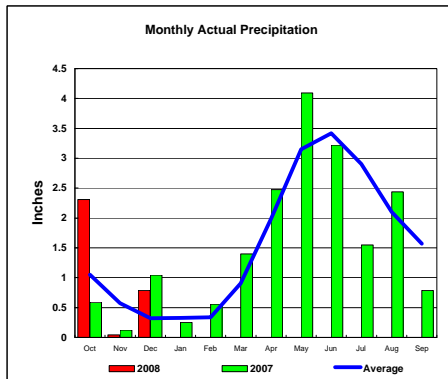
Total Actual Precipitation thru Dec (Inch.) - 2.57



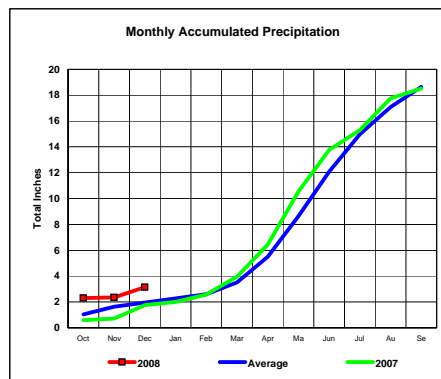
Total Average Precipitation thru Dec (Inch.) - 2.57
Percent of Average for December - 100.00%

BASIN PRECIPITATION - ACTUAL MONTHLY vs AVERAGE MONTHLY TOTALS
Data for the month of December 2007

Niobrara River Basin

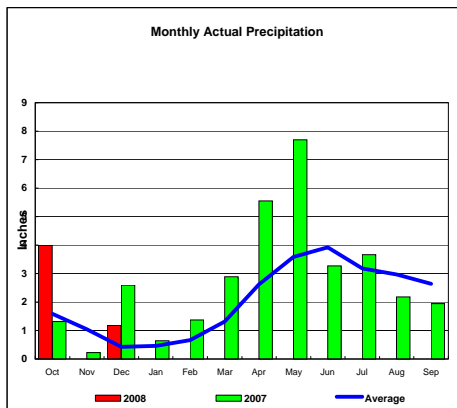


Total Actual Precipitation thru Dec (Inch.) - 3.15

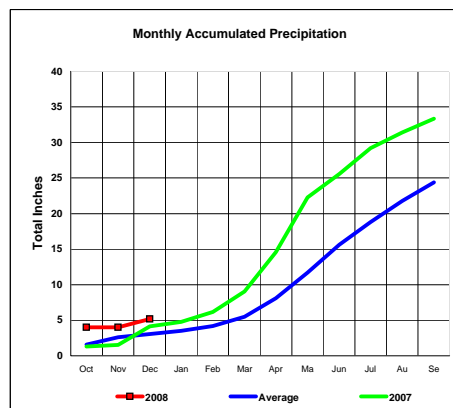


Total Average Precipitation thru Dec (Inch.) - 1.95
Percent of Average for December - 161.70%

Lower Platte River Basin

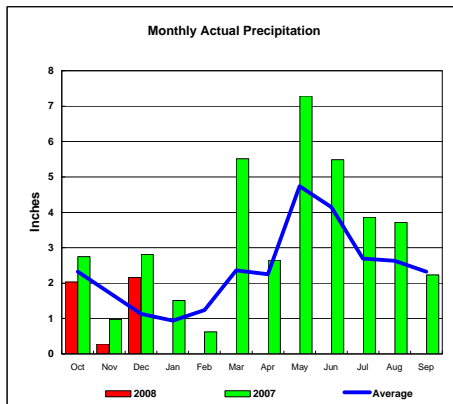


Total Actual Precipitation thru Dec (Inch.) - 5.18

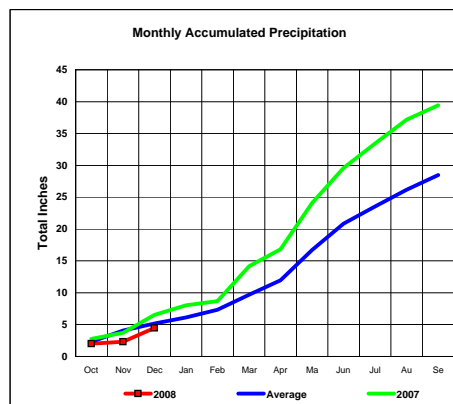


Total Average Precipitation thru Dec (Inch.) - 3.06
Percent of Average for December - 169.12%

Arkansas River Basin



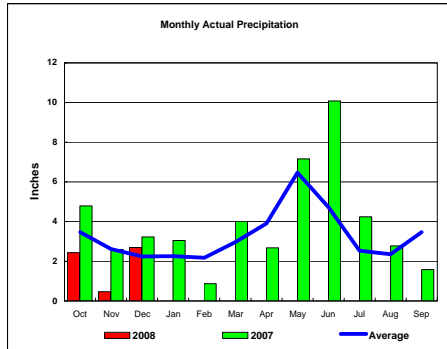
Total Actual Precipitation thru Dec (Inch.) - 4.47



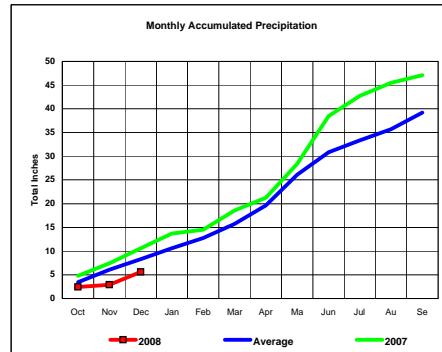
Total Average Precipitation thru Dec (Inch.) - 5.18
Percent of Average for December - 86.29%

BASIN PRECIPITATION - ACTUAL MONTHLY vs AVERAGE MONTHLY TOTALS
 Data for the month of December 2007

Red River Basin

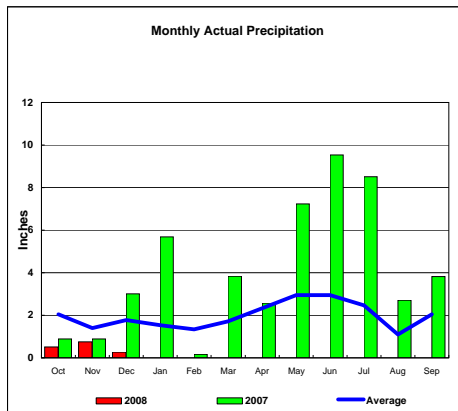


Total Actual Precipitation thru Dec (Inch.) - 5.59

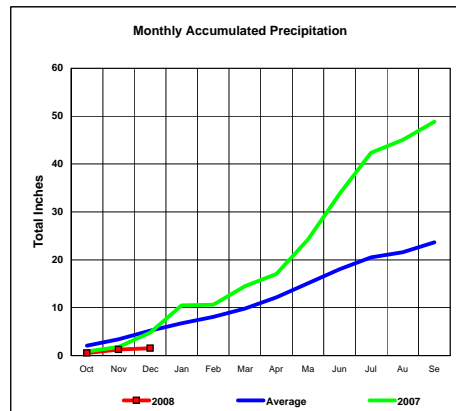


Total Average Precipitation thru Dec (Inch.) - 8.33
 Percent of Average for December - 67.09%

Nueces River Basin

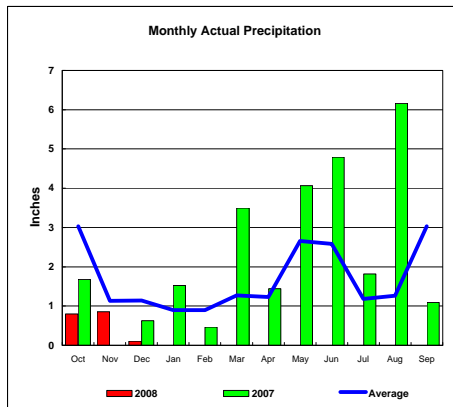


Total Actual Precipitation thru Dec (Inch.) - 1.53

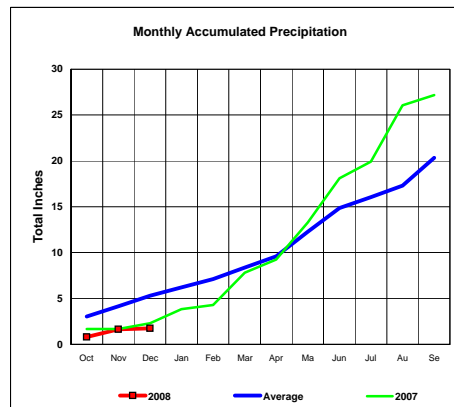


Total Average Precipitation thru Dec (Inch.) - 5.21
 Percent of Average for December - 29.37%

Colorado River Basin



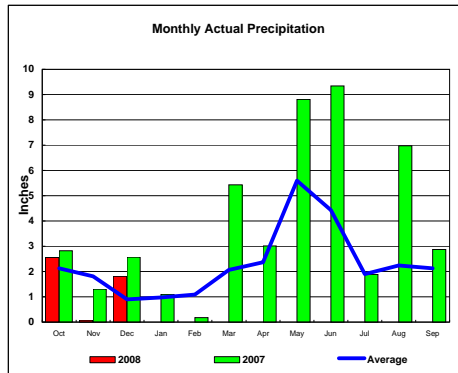
Total Actual Precipitation thru Dec (Inch.) - 1.76



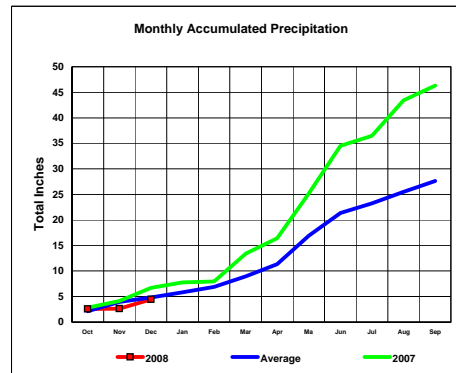
Total Average Precipitation thru Dec (Inch.) - 5.31
 Percent of Average for December - 33.08%

BASIN PRECIPITATION - ACTUAL MONTHLY vs AVERAGE MONTHLY TOTALS
Data for the month of December 2007

Washita River Basin

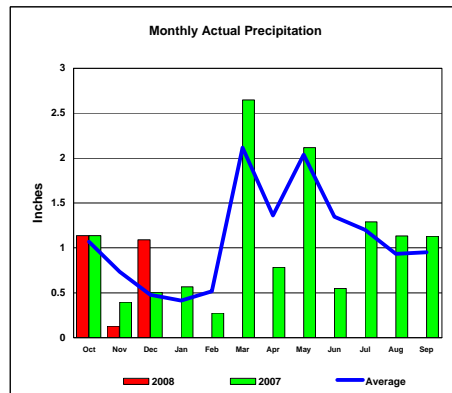


Total Actual Precipitation thru Dec (Inch.) - 4.45

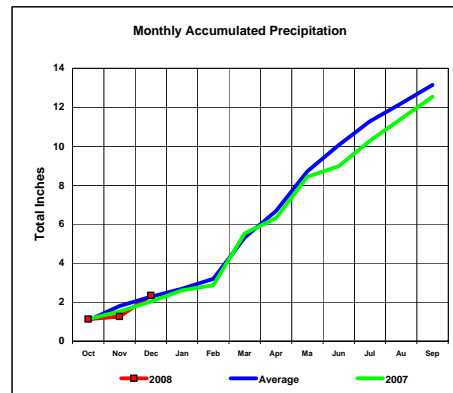


Total Average Precipitation thru Dec (Inch.) - 4.84
Percent of Average for December - 91.93%

North Platte River Basin



Total Actual Precipitation thru Dec (Inch.) - 2.36



Total Average Precipitation thru Dec (Inch.) - 2.28
Percent of Average for December - 103.40%