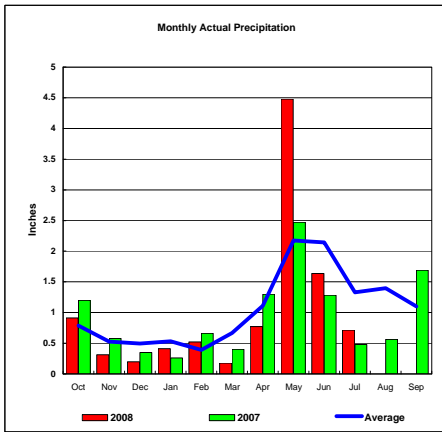
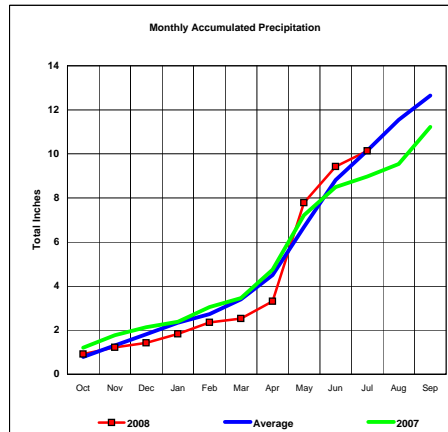


BASIN PRECIPITATION - ACTUAL MONTHLY vs AVERAGE MONTHLY TOTALS
Data for the month of July 2008

Upper Missouri River Basin

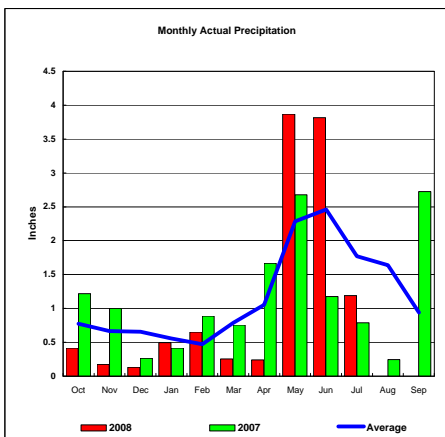


Total Actual Precipitation thru July (Inch.) - 10.14

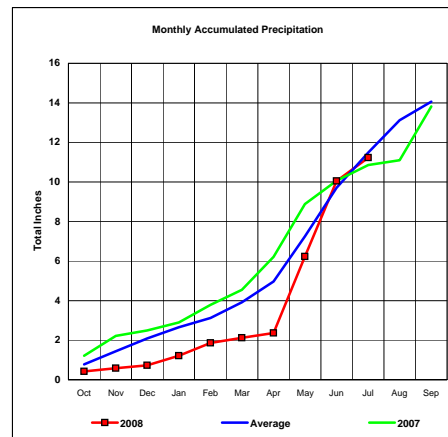


Total Average Precipitation thru July (Inch.) - 10.15
Percent of Average for July - 99.83%

Milk River Basin

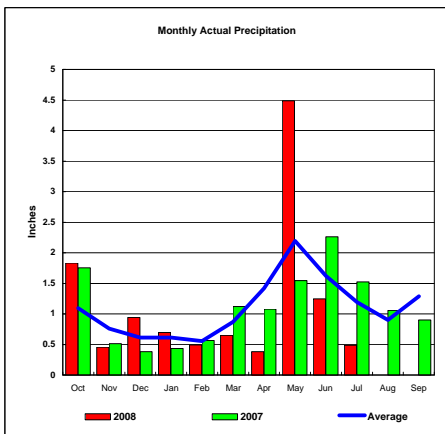


Total Actual Precipitation thru July (Inch.) - 11.23

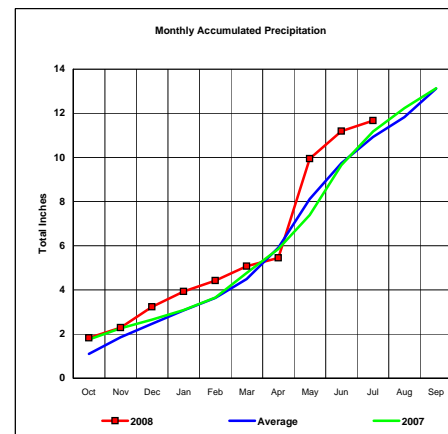


Total Average Precipitation thru July (Inch.) - 11.48
Percent of Average for July - 97.82%

Bighorn River Basin



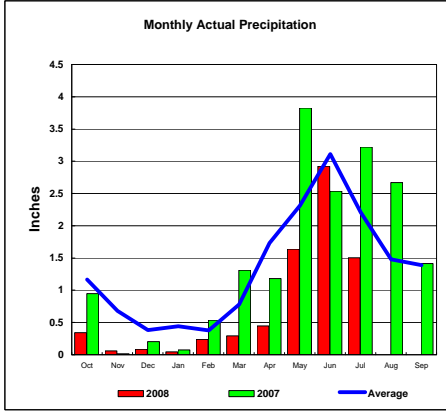
Total Actual Precipitation thru July (Inch.) - 11.67



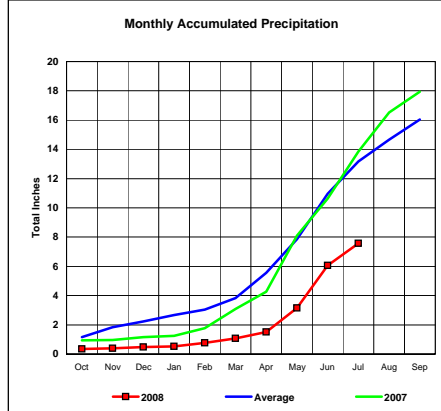
Total Average Precipitation thru July (Inch.) - 10.93
Percent of Average for July - 106.75%

BASIN PRECIPITATION - ACTUAL MONTHLY vs AVERAGE MONTHLY TOTALS
Data for the month of July 2008

Heart River Basin

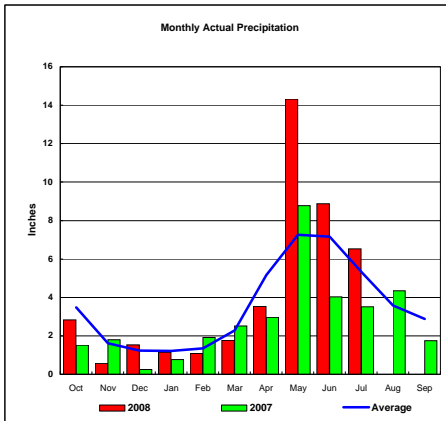


Total Actual Precipitation thru July (Inch.) - 7.57

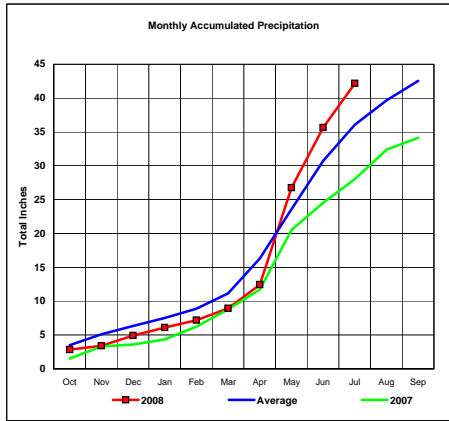


Total Average Precipitation thru July (Inch.) - 13.18
Percent of Average for July - 57.44%

Cheyenne River Basin

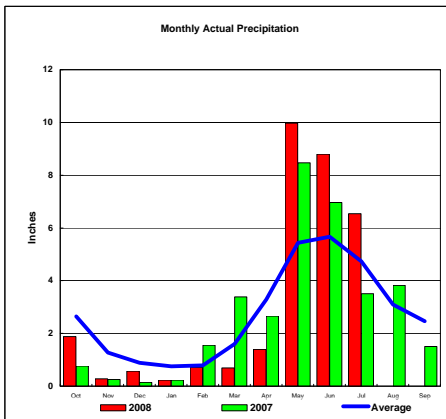


Total Actual Precipitation thru July (Inch.) - 42.19

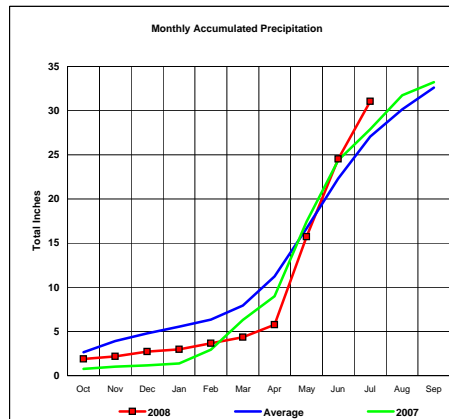


Total Average Precipitation thru July (Inch.) - 36.07
Percent of Average for July - 116.97%

Grand River Basin



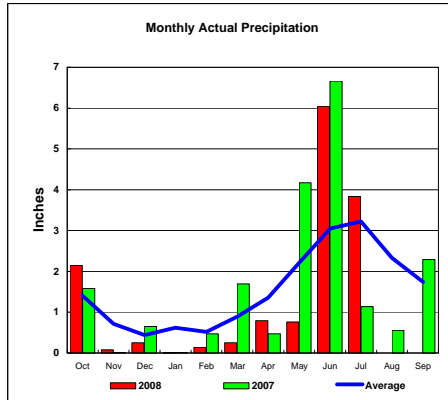
Total Actual Precipitation thru July (Inch.) - 31.06



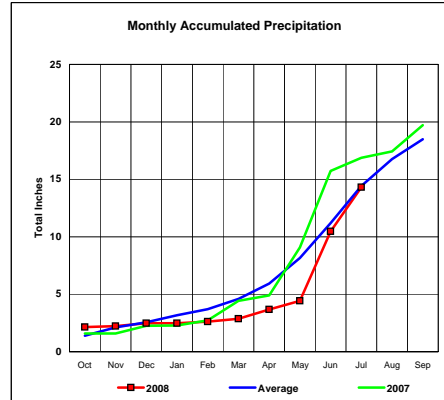
Total Average Precipitation thru July (Inch.) - 27.06
Percent of Average for July - 114.80%

BASIN PRECIPITATION - ACTUAL MONTHLY vs AVERAGE MONTHLY TOTALS
Data for the month of July 2008

James River Basin

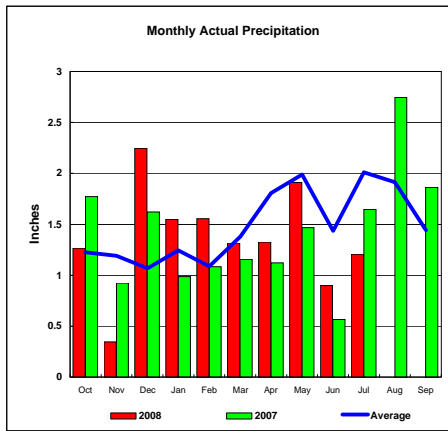


Total Actual Precipitation thru July (Inch.) - 14.30

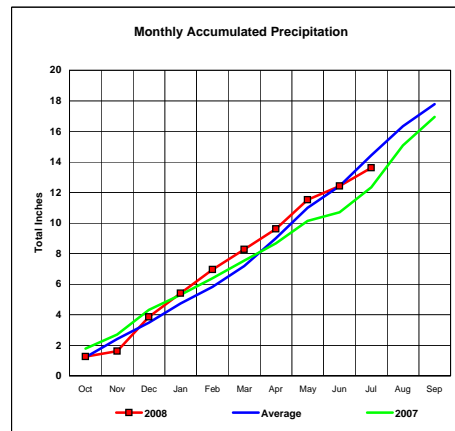


Total Average Precipitation thru July (Inch.) - 14.42
Percent of Average for July - 99.17%

Colorado-Big Thompson Project

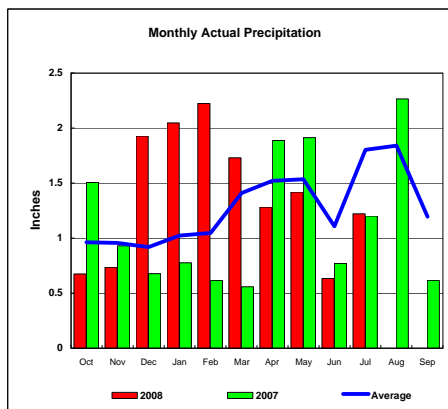


Total Actual Precipitation thru July (Inch.) - 13.62

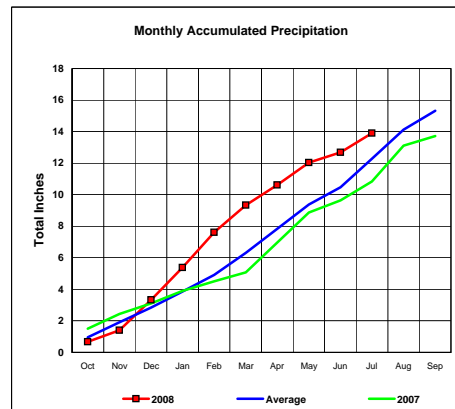


Total Average Precipitation thru July (Inch.) - 14.43
Percent of Average for July - 94.34%

Fryingpan-Arkansas Project



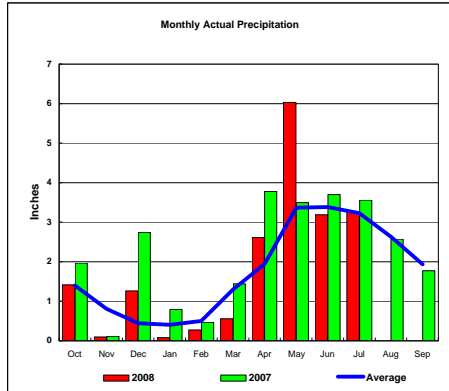
Total Actual Precipitation thru July (Inch.) - 13.90



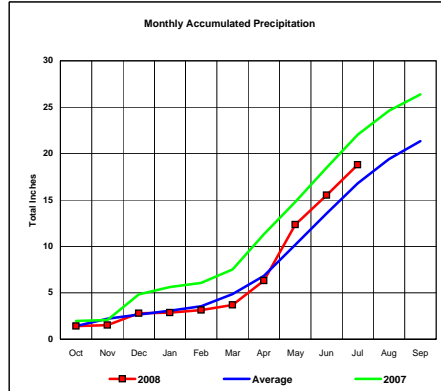
Total Average Precipitation thru July (Inch.) - 12.28
Percent of Average for July - 113.15%

BASIN PRECIPITATION - ACTUAL MONTHLY vs AVERAGE MONTHLY TOTALS
Data for the month of July 2008

Republican River Basin

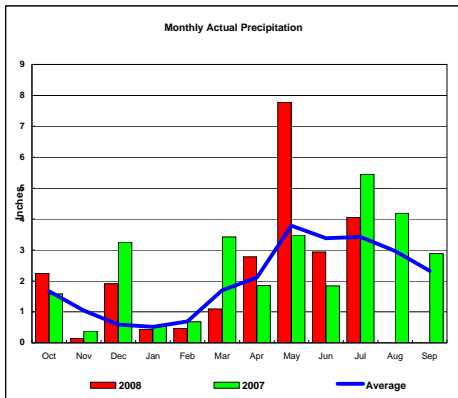


Total Actual Precipitation thru July (Inch.) - 18.78

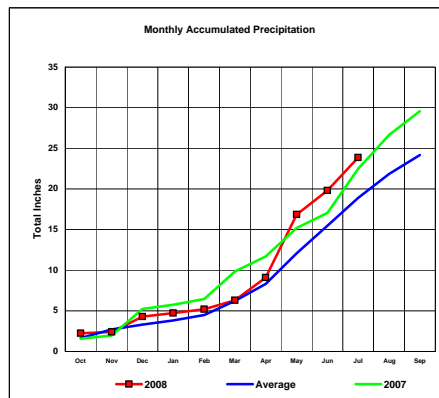


Total Average Precipitation thru July (Inch.) - 16.79
 Percent of Average for July - 111.85%

Solomon River Basin

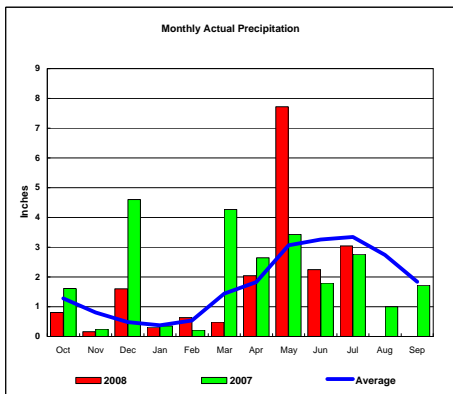


Total Actual Precipitation thru July (Inch.) - 23.86

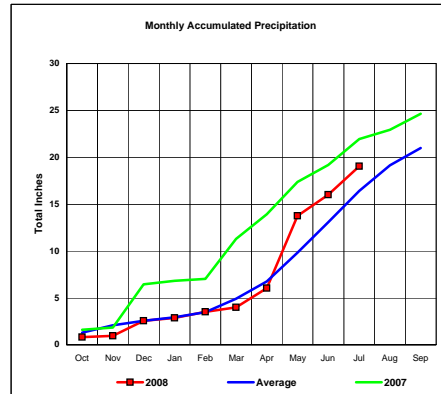


Total Average Precipitation thru July (Inch.) - 18.90
 Percent of Average for July - 126.24%

Smoky Hill River Basin



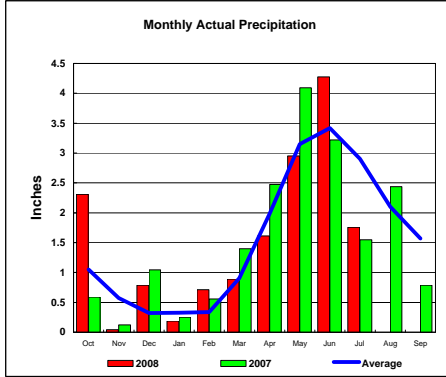
Total Actual Precipitation thru July (Inch.) - 19.04



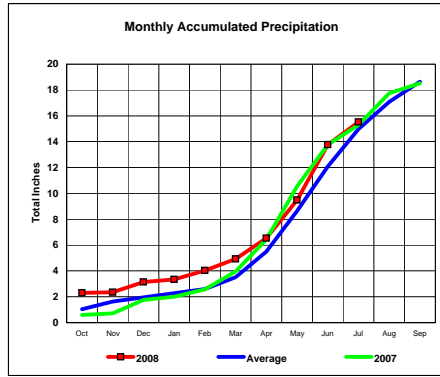
Total Average Precipitation thru July (Inch.) - 16.42
 Percent of Average for July - 115.96%

BASIN PRECIPITATION - ACTUAL MONTHLY vs AVERAGE MONTHLY TOTALS
Data for the month of July 2008

Niobrara River Basin

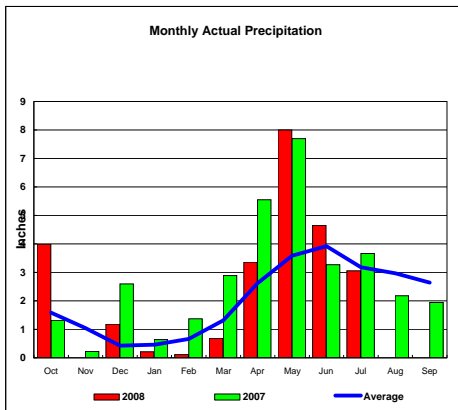


Total Actual Precipitation thru July (Inch.) - 15.52

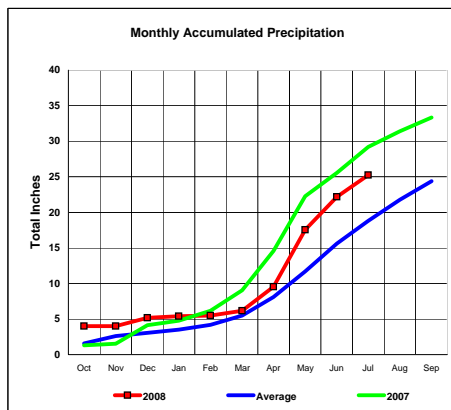


Total Average Precipitation thru July (Inch.) - 14.98
Percent of Average for July - 103.64%

Lower Platte River Basin

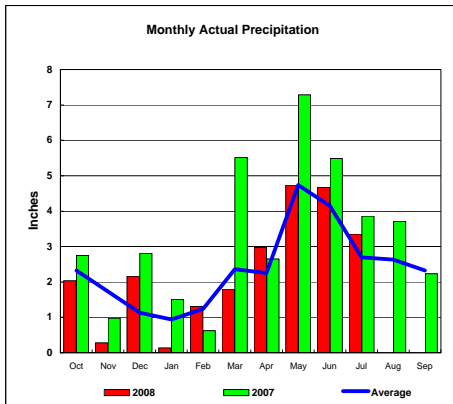


Total Actual Precipitation thru July (Inch.) - 25.25

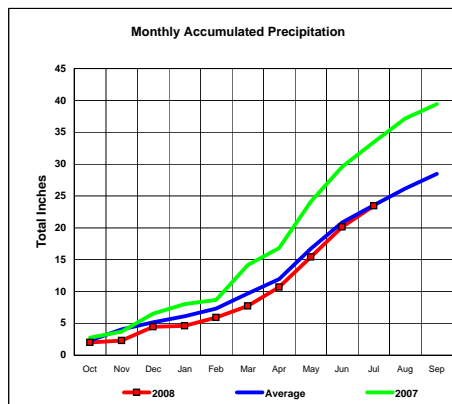


Total Average Precipitation thru July (Inch.) - 18.80
Percent of Average for July - 134.32%

Arkansas River Basin



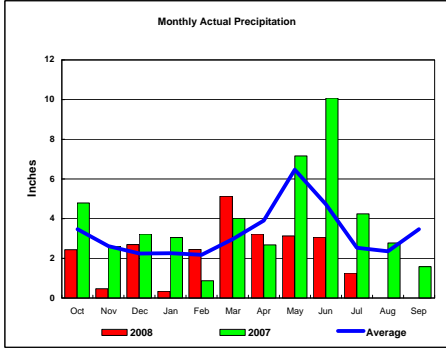
Total Actual Precipitation thru July (Inch.) - 23.47



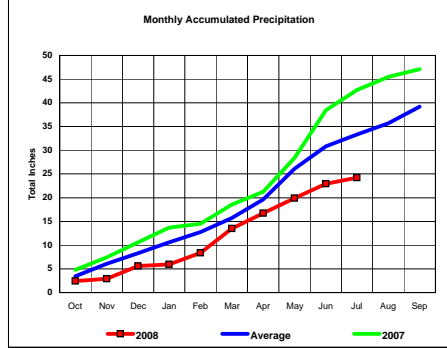
Total Average Precipitation thru July (Inch.) - 23.54
Percent of Average for July - 99.72%

BASIN PRECIPITATION - ACTUAL MONTHLY vs AVERAGE MONTHLY TOTALS
Data for the month of July 2008

Red River Basin

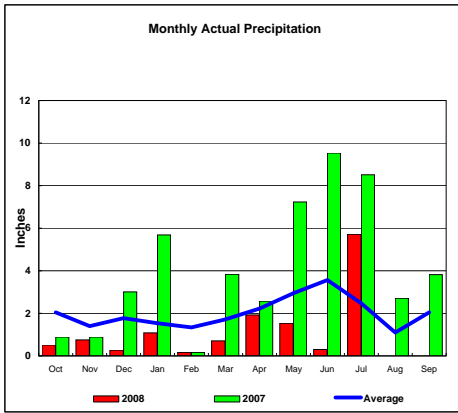


Total Actual Precipitation thru July (Inch.) - 24.20

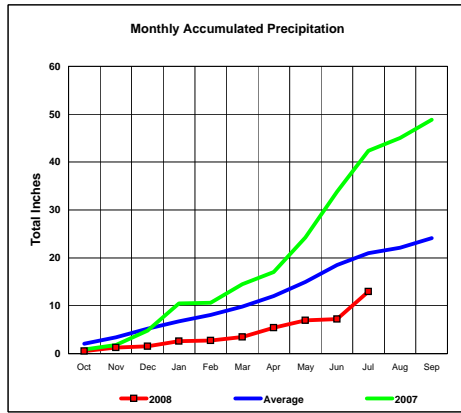


Total Average Precipitation thru July (Inch.) - 33.36
Percent of Average for July - 72.54%

Nueces River Basin

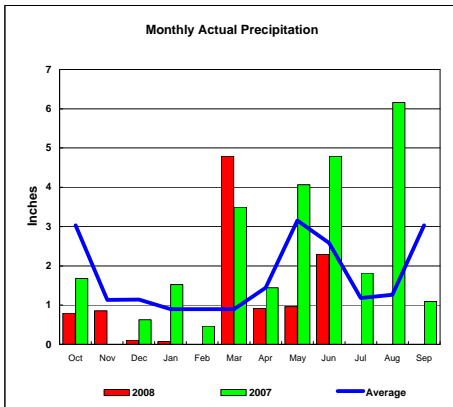


Total Actual Precipitation thru July (Inch.) - 12.95

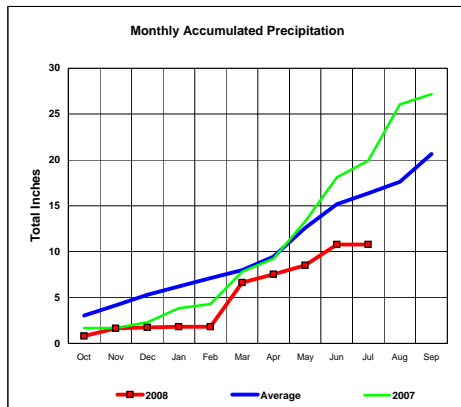


Total Average Precipitation thru July (Inch.) - 21.01
Percent of Average for July - 61.64%

Colorado River Basin



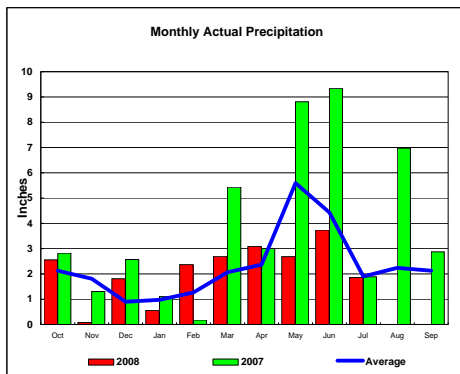
Total Actual Precipitation thru July (Inch.) - 10.79



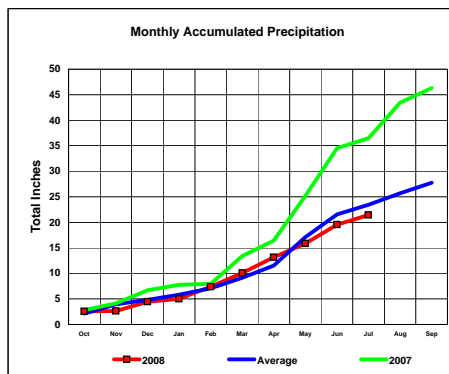
Total Average Precipitation thru July (Inch.) - 16.37
Percent of Average for July - 65.90%

BASIN PRECIPITATION - ACTUAL MONTHLY vs AVERAGE MONTHLY TOTALS
Data for the month of July 2008

Washita River Basin

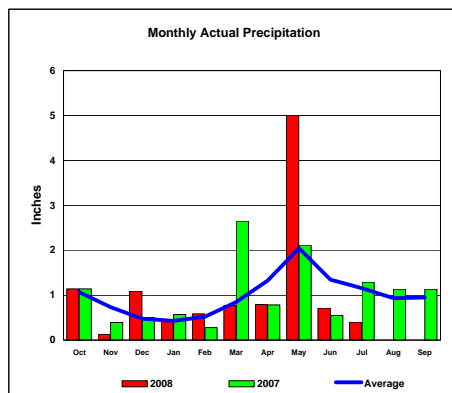


Total Actual Precipitation thru July (Inch.) - 21.44

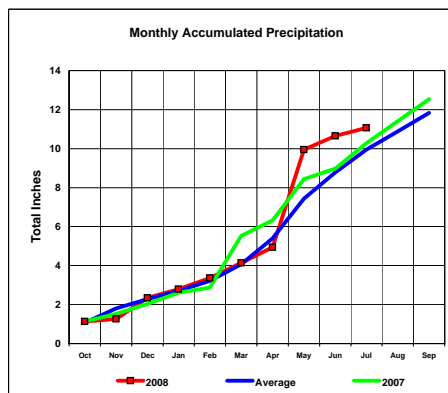


Total Average Precipitation thru July (Inch.) - 23.42
 Percent of Average for July - 91.52%

North Platte River Basin



Total Actual Precipitation thru July (Inch.) - 11.06



Total Average Precipitation thru July (Inch.) - 9.94
 Percent of Average for July - 111.24%