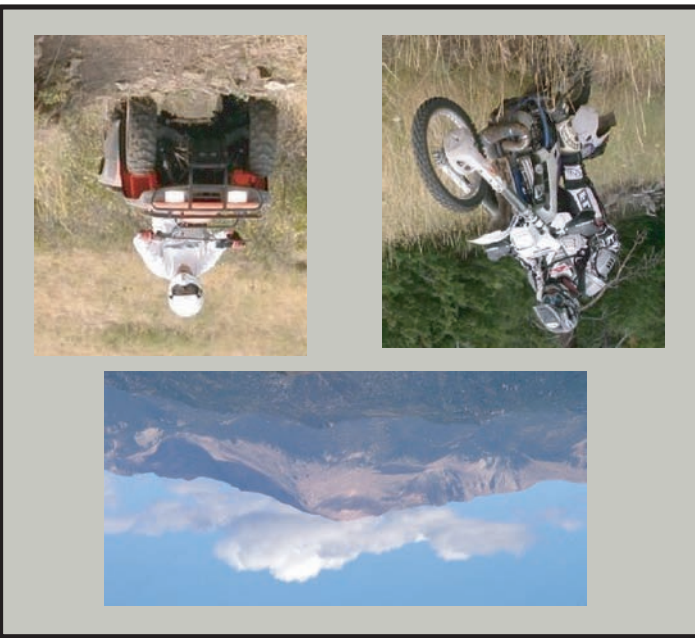


PIKES PEAK RANGER DISTRICT PIKE NATIONAL FOREST



RAINBOW FALLS & NORTH DIVIDE (717) OFF-HIGHWAY VEHICLE (OHV) ROUTE MAPS

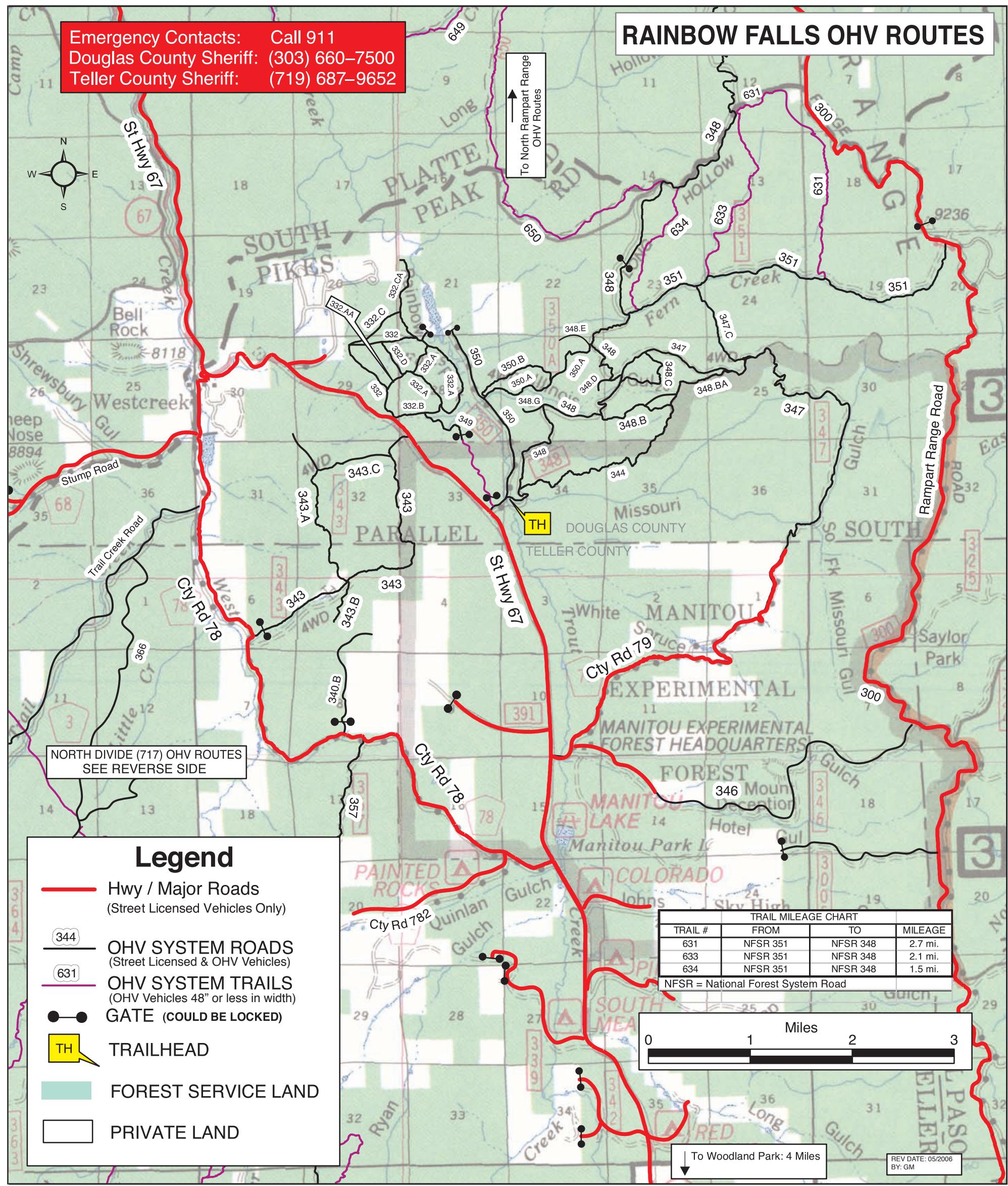
INFORMATION

- Know your ability and your equipment and that of your partners. Remember, you are riding at your own risk.
- Stay the trail: Off-trail riding is illegal, damages forest resources and may result in closures.
- Use hand signals to inform oncoming traffic as to how many are traveling behind you in a group.
- Wear adequate safety equipment including helmet and eye protection.
- Share the trail: Motorized vehicles must yield to pedestrians, bicyclists and horses.
- Dispersed camping is available in both OHV areas. Vehicle parking is only allowed immediately adjacent to system roads. Please be courteous.
- Do not ride around camping areas or parking areas on an OHV. Ride only to and from the trails to avoid conflict.
- Never shoot any firearm on or across any road or within 150 yards of an occupied area or campsite, or without an adequate earthen backstop.
- Please respect public lands. Pack out your trash.

For more information contact:
 USFS Pikes Peak Ranger District: 719-636-1602 Website: www.fs.fed.us/r2/psic
 Colorado State Parks: 719-227-5250 Website: www.parks.state.co.us

IT IS THE RESPONSIBILITY OF THE OHV USER TO KNOW THE RULES AND REGULATIONS

- Off-highway vehicle (OHV) is defined as any self-propelled vehicle with wheels or tracks designed primarily for recreational use off of the public highways and capable of transporting persons over unimproved terrain. This definition includes all-terrain vehicles (ATV's), motorcycles, dune buggies and recreational 4-wheel drive motor vehicles.
- OHV registration is required: all motorized vehicles on OHV system roads and trails are required to have a valid state OHV registration or current licence plate.
- An adequate muffler and a USDA-Forest Service approved spark arrestor is mandatory on all OHV's.
- Operating a vehicle carelessly, recklessly or without regard for the rights or safety of other persons or at a dangerous speed is prohibited.
- OHV's must be 48 inches or less in width to operate on system trails. Vehicles over 48 inches wide may operate only on system roads designated for their use.
- Operating a vehicle in a manner that damages or unreasonably disturbs the land, wildlife or vegetative resources is prohibited.
- Respect wetlands: No bog or wet area play is allowed.
- Always remove flammable material within 10 feet from any campfire to keep the fire from spreading.
- Campfires must be attended at all times. Never leave a campfire without completely extinguishing it. If it's too hot to touch, it's too hot to leave.





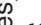




Emergency Contacts: Call 911
Douglas County Sheriff: (303) 660-7500
Teller County Sheriff: (719) 687-9652



RAINBOW FALLS OHV ROUTES
 SEE REVERSE SIDE

NORTH DIVIDE (717) OHV ROUTES

Legend

-  HWY / MAJOR ROADS
(Street Licensed Vehicles Only)
-  OHV SYSTEM ROADS
(Street Licensed & OHV Vehicles)
-  OHV SYSTEM TRAILS
(OHV Vehicles 48" or less in width)
-  GATE (COULD BE LOCKED)
-  TRAILHEAD
-  FOREST SERVICE LAND
-  PRIVATE LAND

TRAIL #	FROM	TO	MILEAGE
717	NFSR 357.C	NFSR 363	6.4 mi.
717	NFSR 363	CTY. RD. 3 (south)	2.8 mi.
717	CTY. RD. 3 (south)	CTY. RD. 3 (north)	7.4 mi.
717	NFSR 364	NFSR 364	3.2 mi.
717	NFSR 364	NFSR 365	4.2 mi.
717	NFSR 365	NFSR 357.C	2.9 mi.
717.A	717	TH	10.4 mi.
717.B	717	717	9.2 mi.
717.C	717	717	2.9 mi.
717.D	717	717	717
717.E	717	CTY RD 33	3.7 mi.
717.F	717.A	NFSR 354	0.2 mi.
717.F	717.A	NFSR 354	1.0 mi.

NFSR = National Forest System Road

