

The background of the slide is a close-up photograph of a dam's surface. It is heavily covered with quagga mussels, which are small, brown, teardrop-shaped organisms. The mussels are densely packed in some areas, particularly on the left side, and more sparsely distributed in others. The overall appearance is a textured, brownish-grey surface.

PARKER DAM

QUAGGA-MIRE

UPDATE

8/8/07

Test Plates were cleaned on
6/28/07. This picture taken on
8/6/07



Unit #2 penstock fixed wheel
gate end



Fixed wheel gate webbing down stream side



Upstream side of gate



Gate webbing rivet



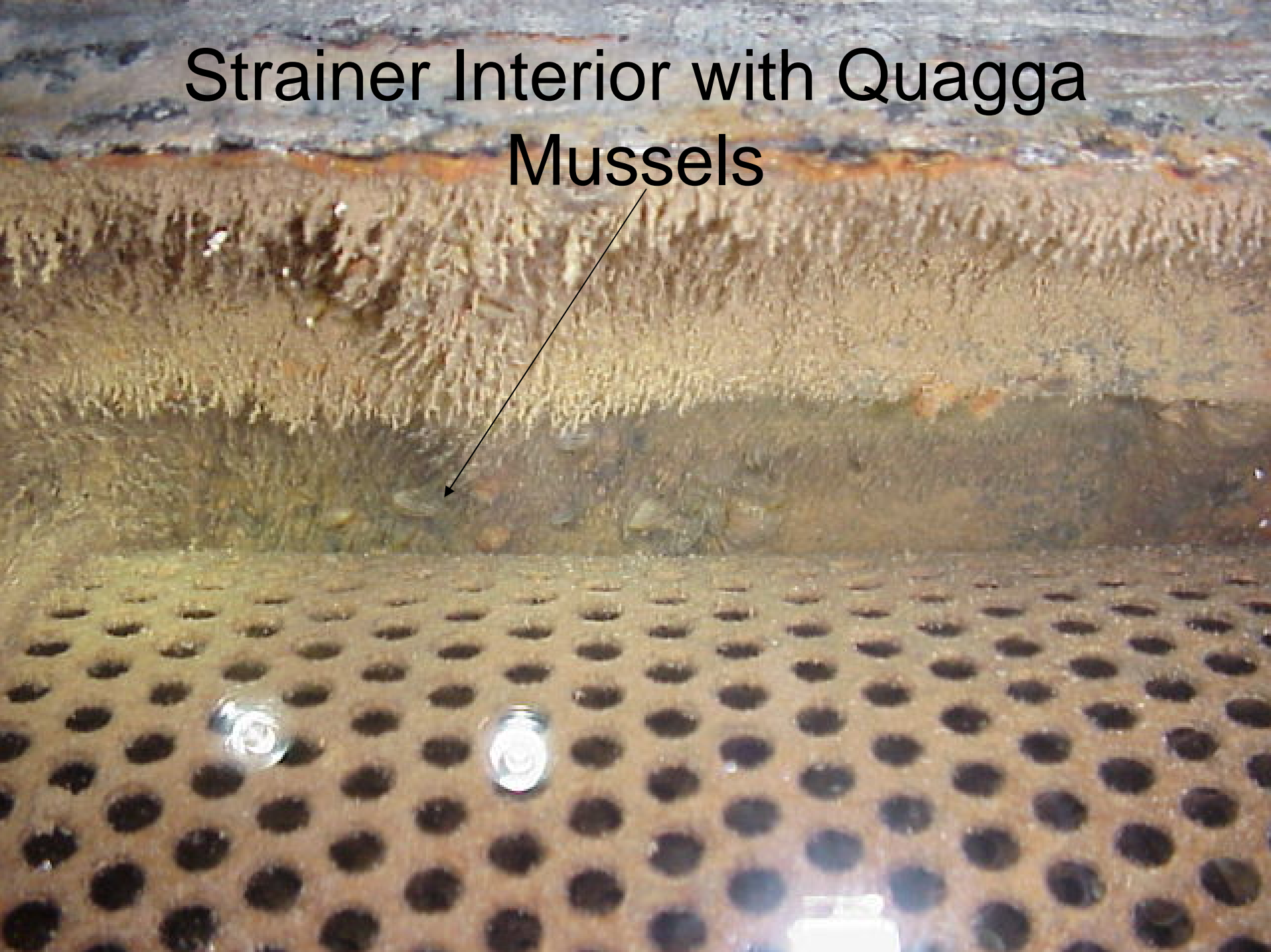
Wheel on gate



Unit #2 cooling water strainer inspection



Strainer Interior with Quagga Mussels



Bottom of strainer with basket removed

