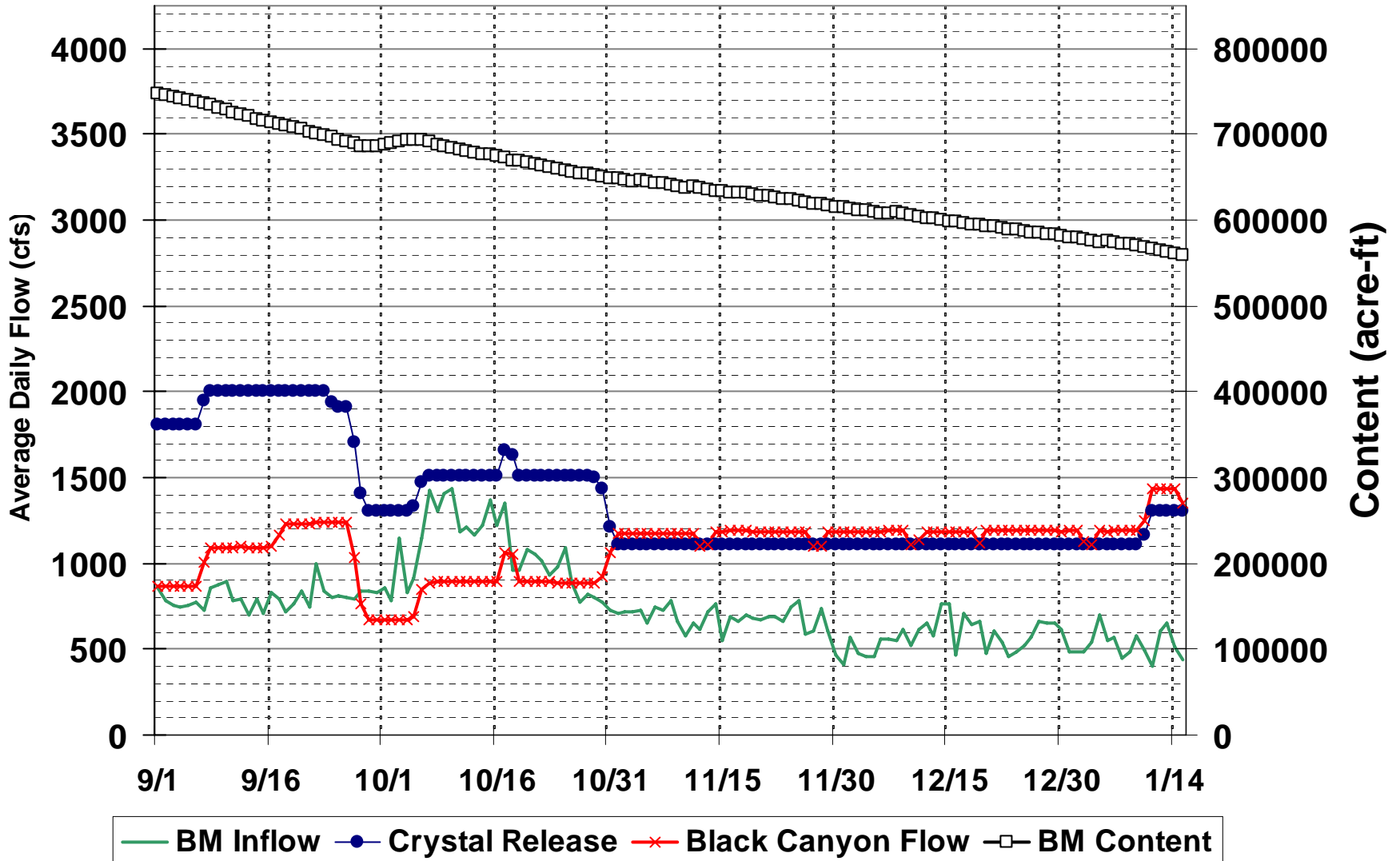


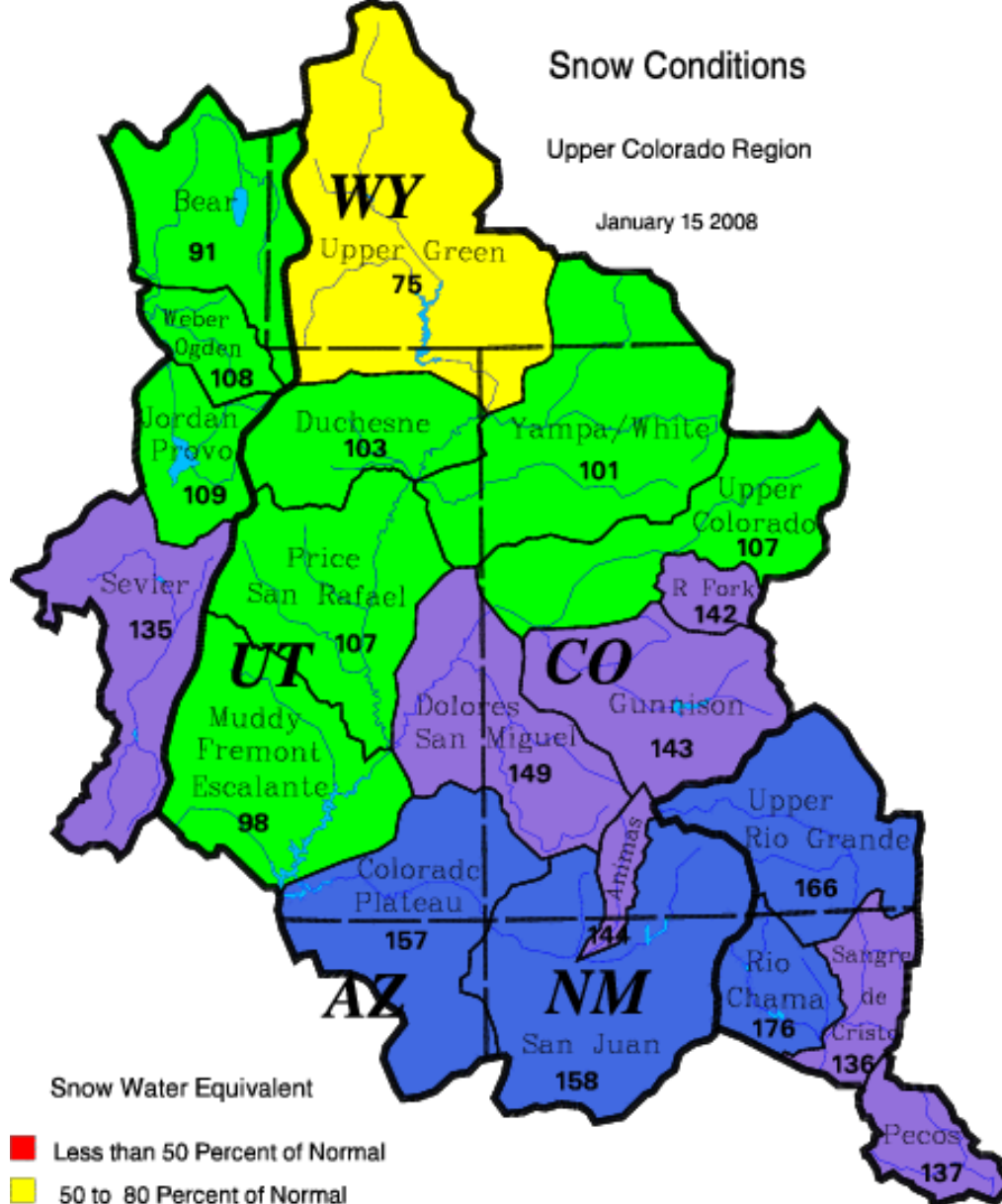
September 2007 - January 2008



Snow Conditions

Upper Colorado Region

January 15 2008



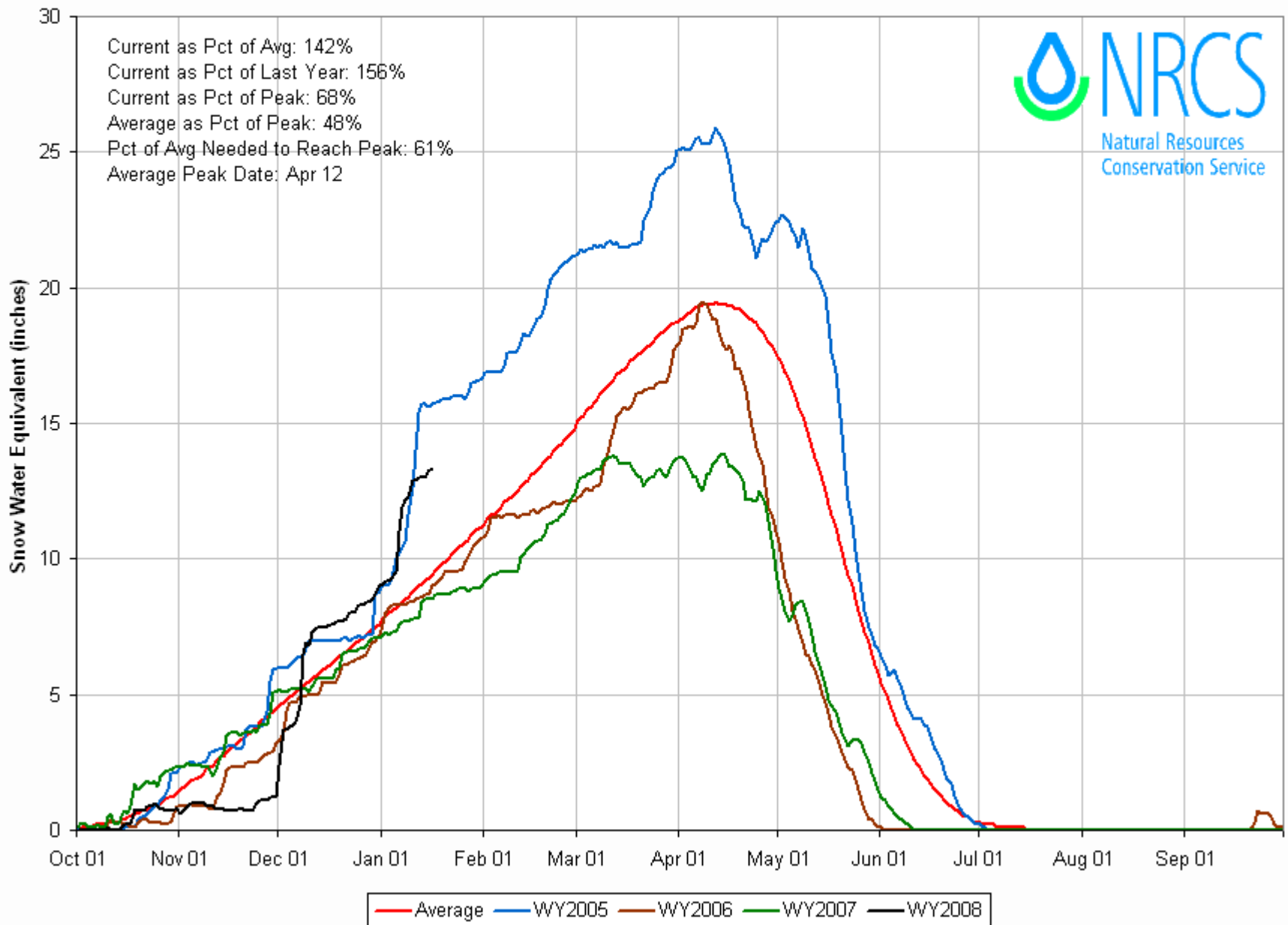
Snow Water Equivalent

- Less than 50 Percent of Normal
- 50 to 80 Percent of Normal
- 80 to 120 Percent of Normal
- 120 to 150 Percent of Normal
- Greater than 150 Percent of Normal

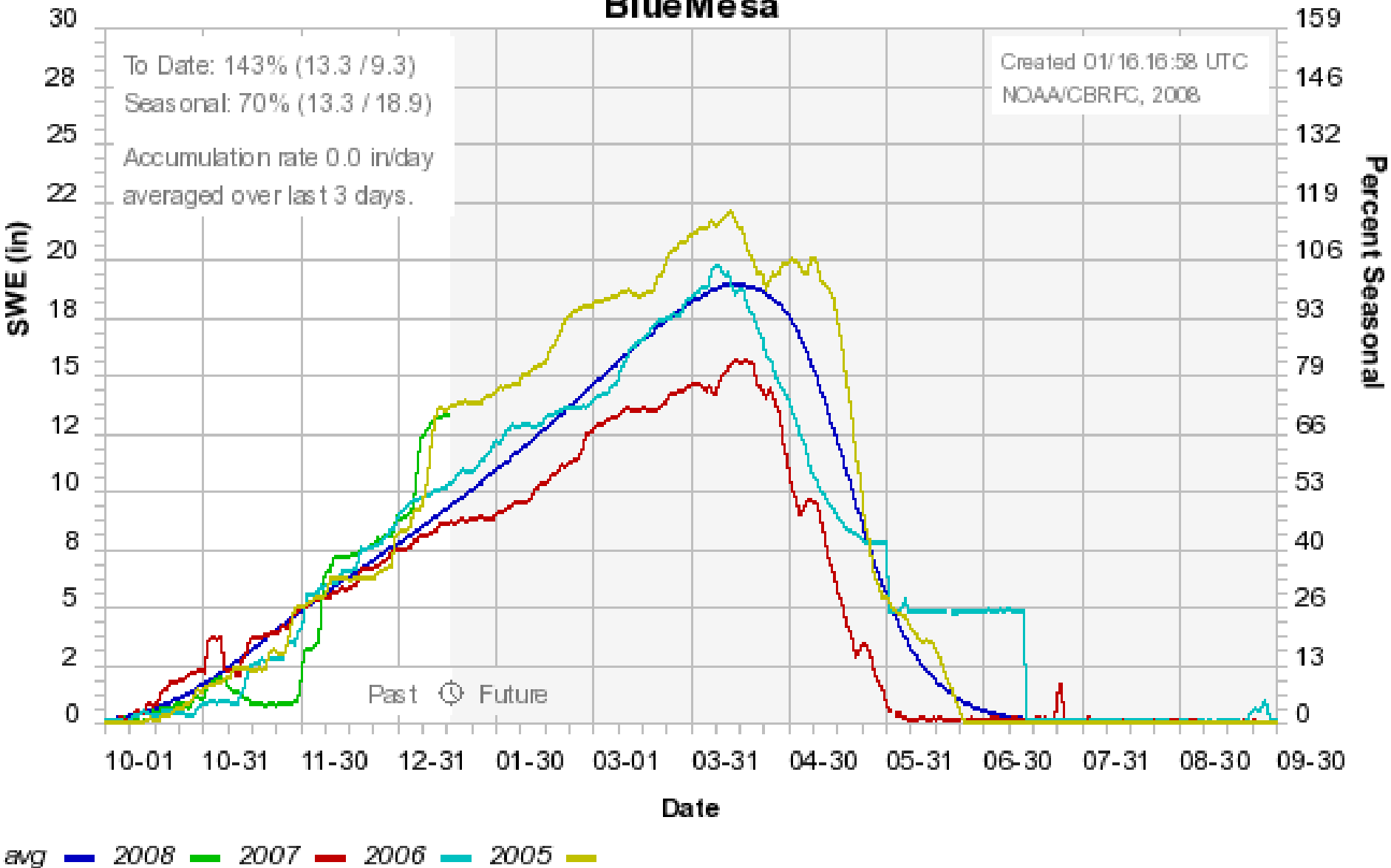
Upper Colorado
GIS
Region

Gunnison River Basin Time Series Snowpack Summary

Based on Provisional SNOTEL data as of Jan 16, 2008

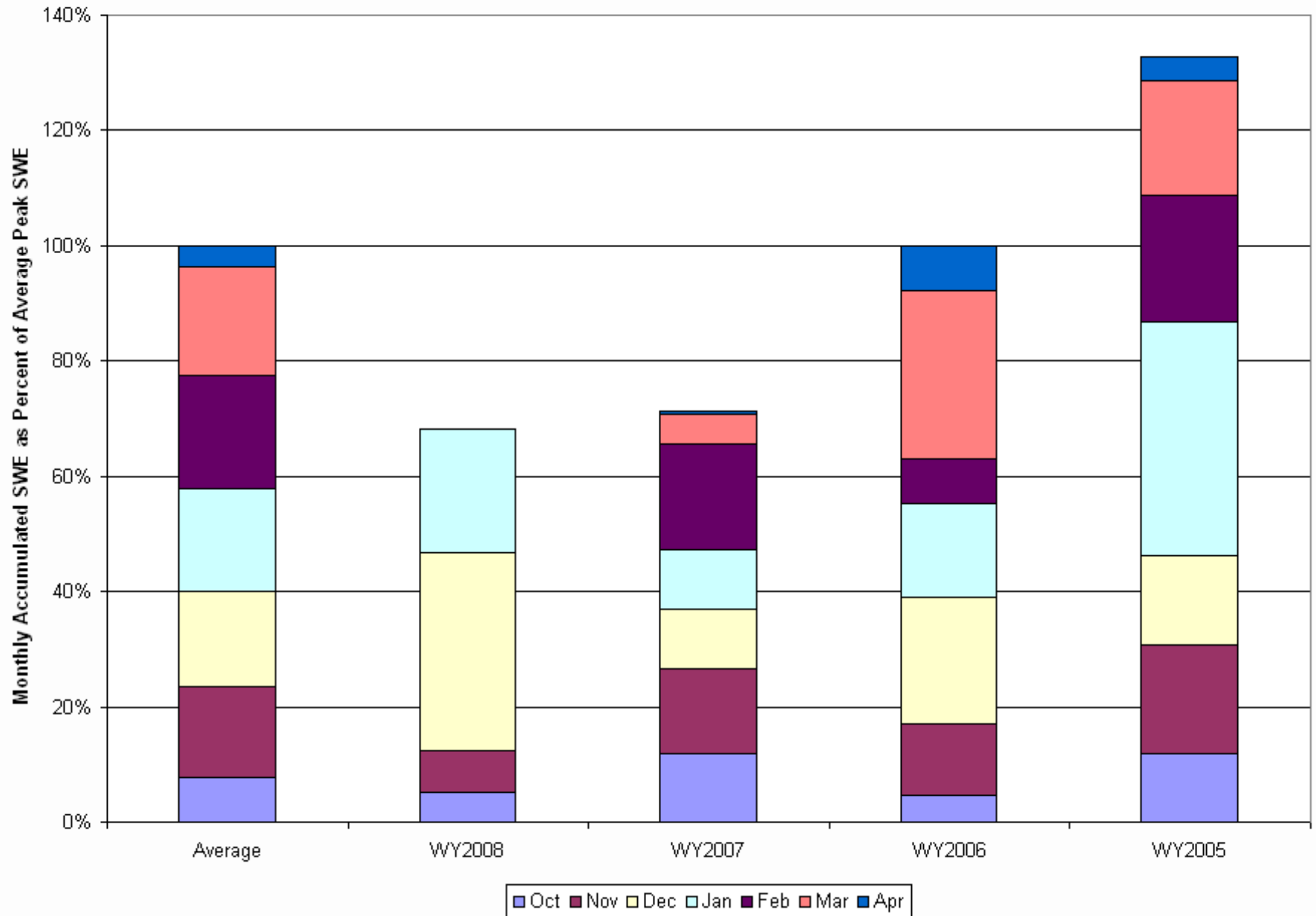


Colorado Basin River Forecast Center BlueMesa



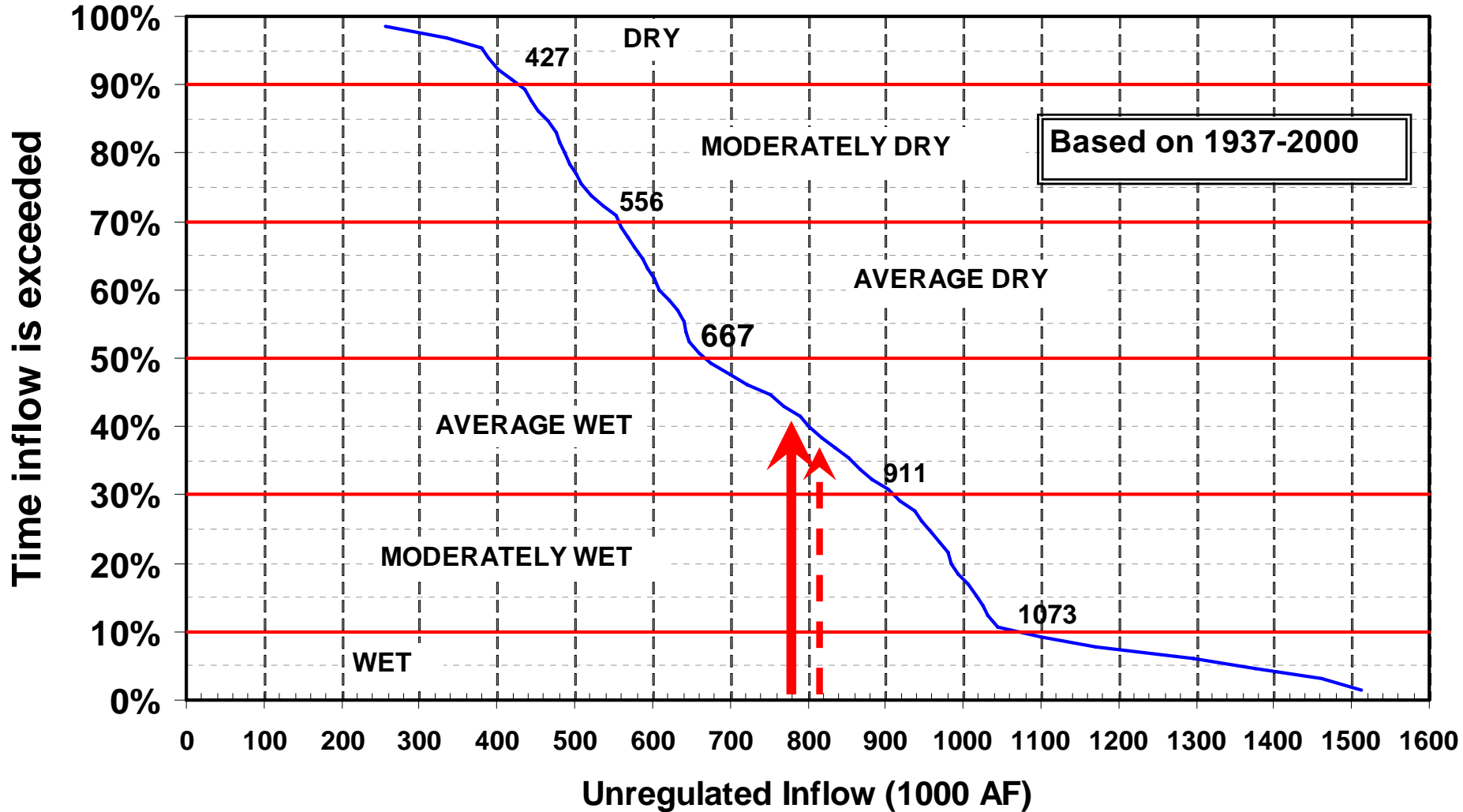
Gunnison River Basin Time Series Monthly Snowpack Summary

Based on Provisional SNOTEL data as of Jan 16, 2008

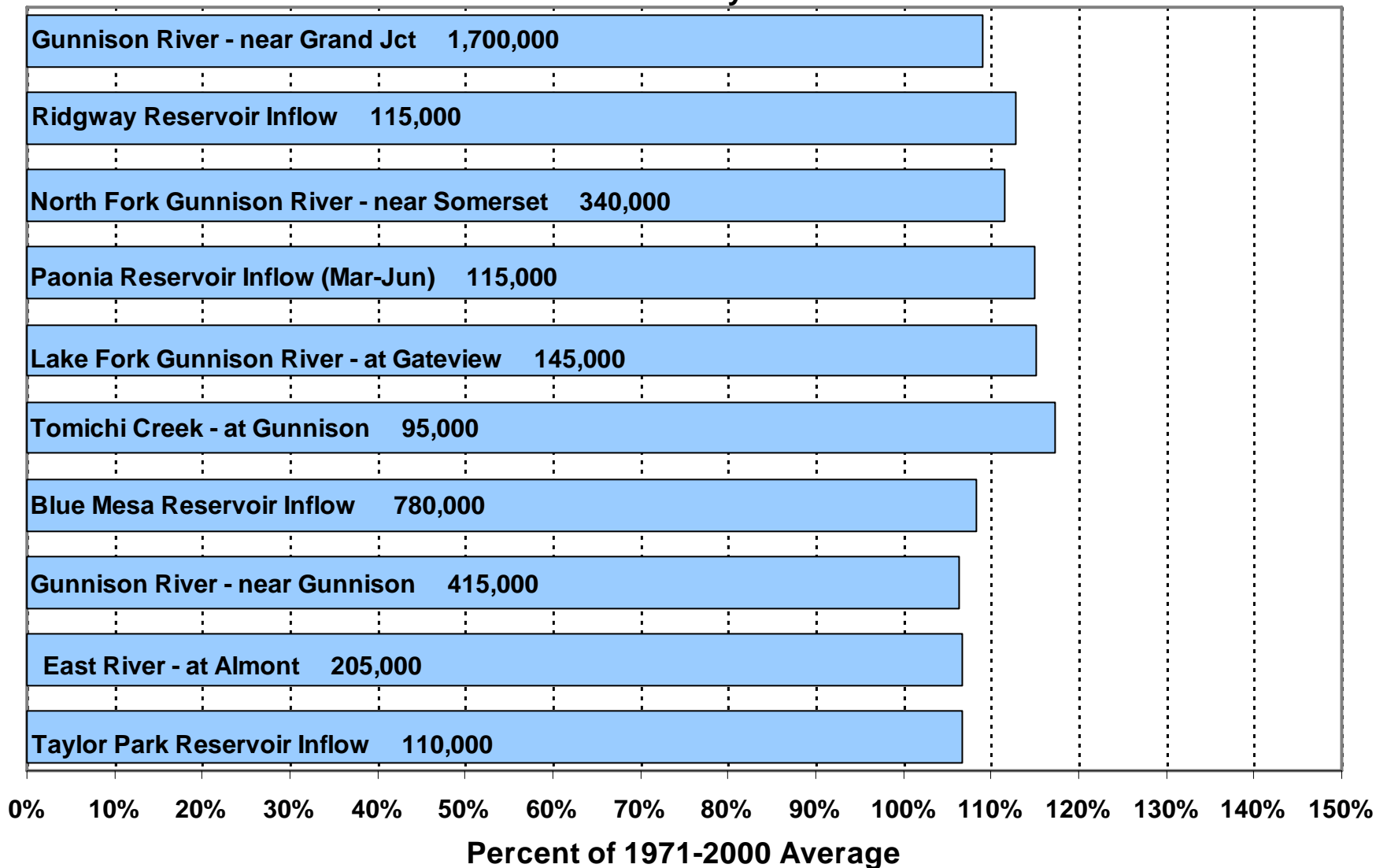


Blue Mesa Reservoir

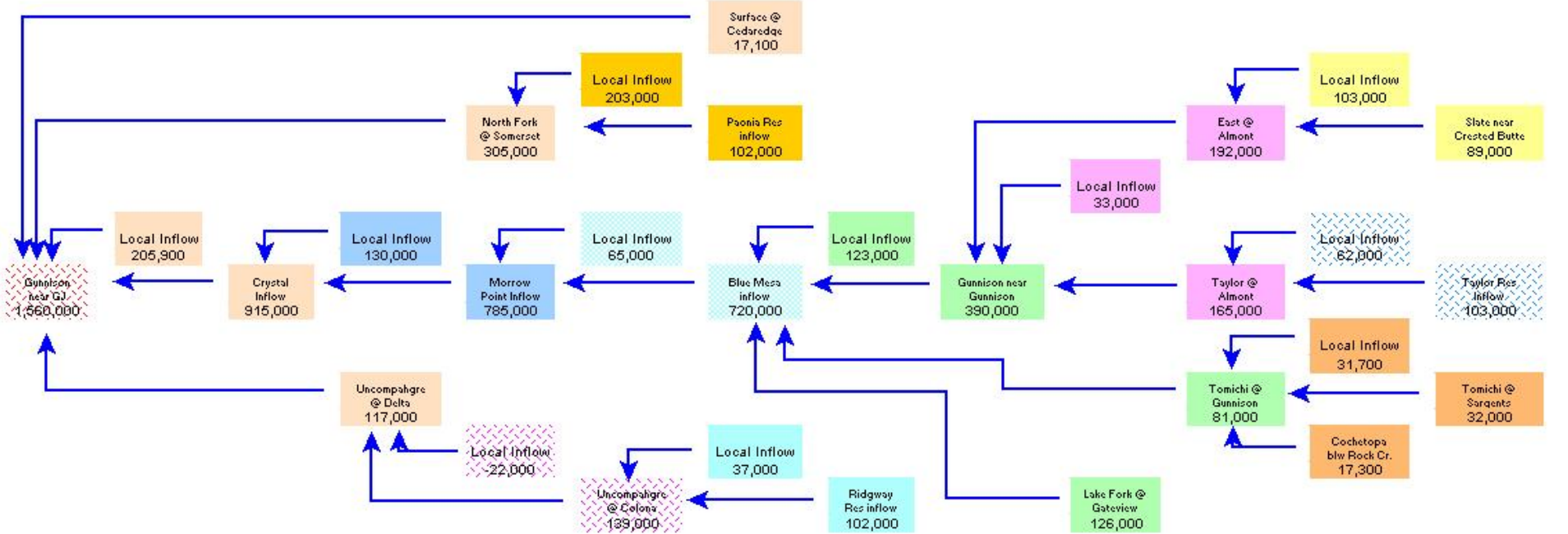
April - July Unregulated Inflow



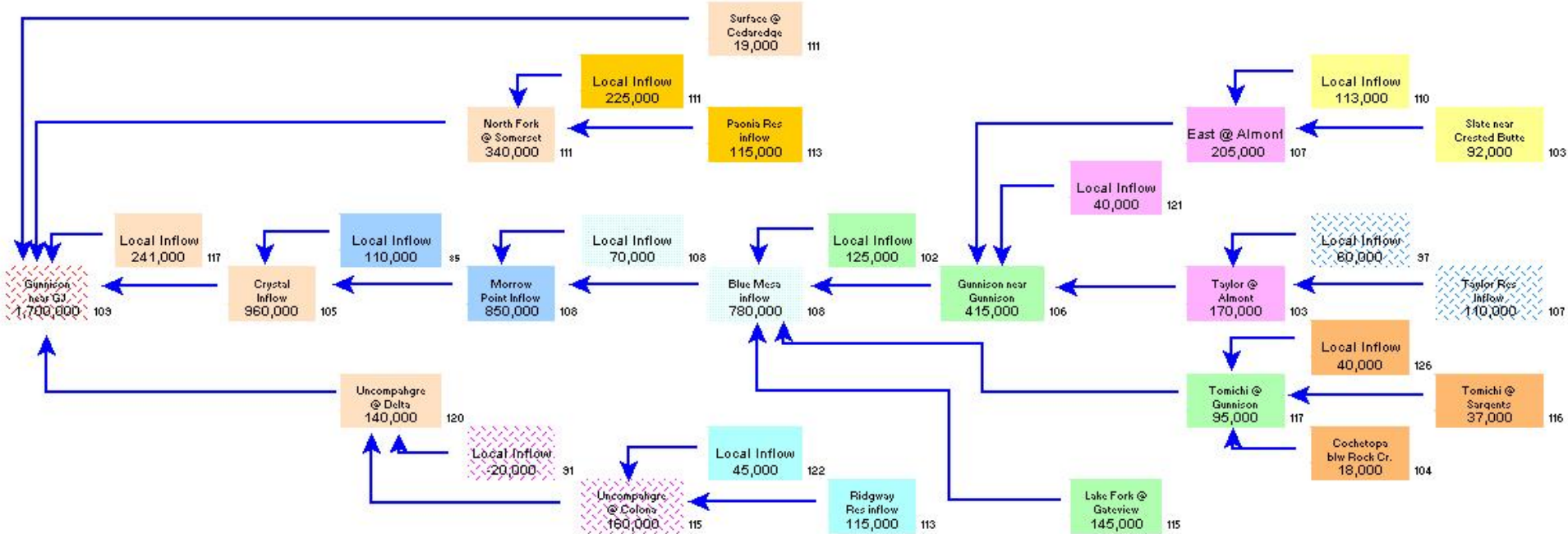
Forecasted April-July Runoff As of January 1st



AVERAGE April-July RUNOFF ac-ft

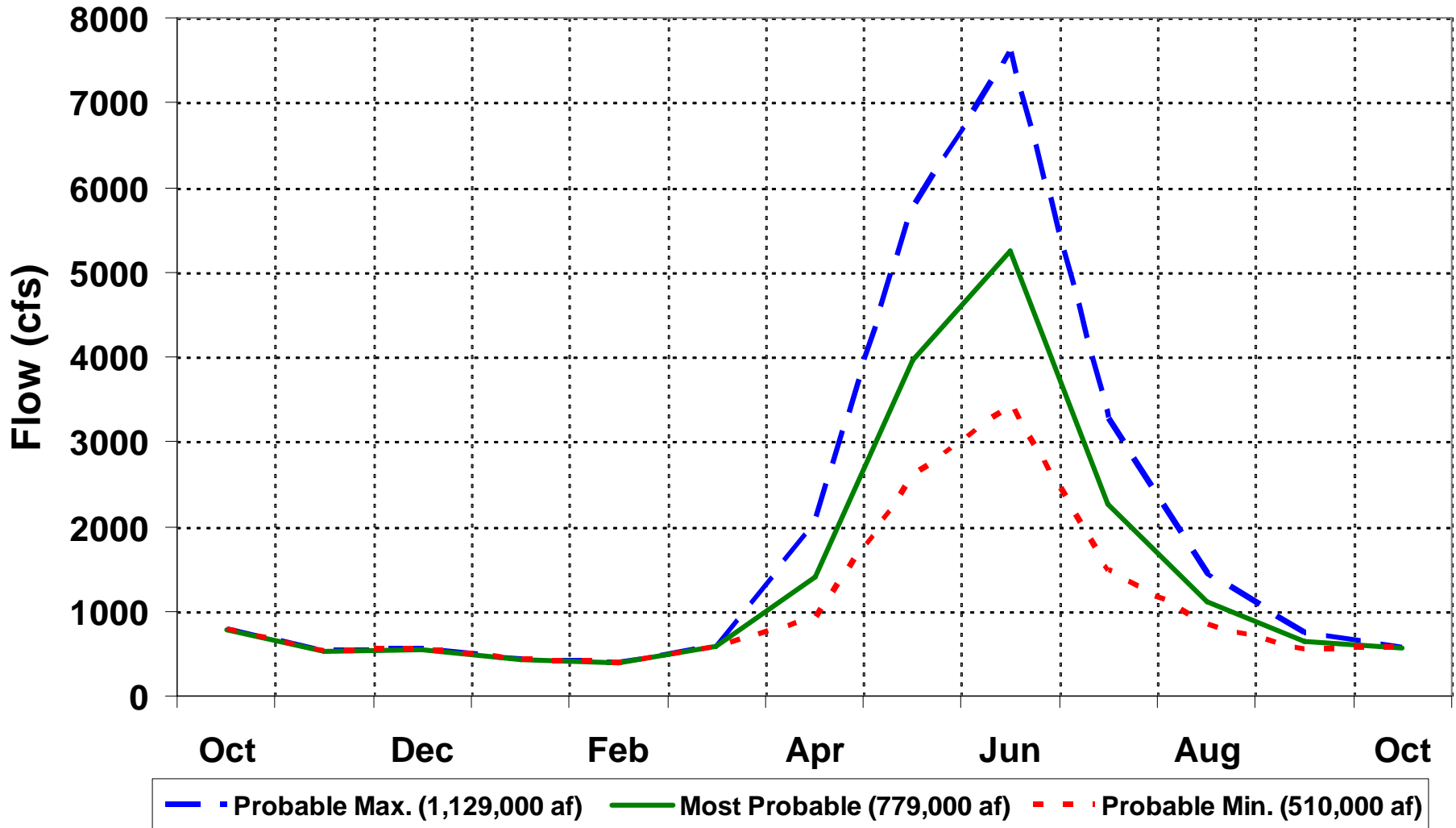


JAN 1 FORECASTED 2008 April-July RUNOFF ac-ft



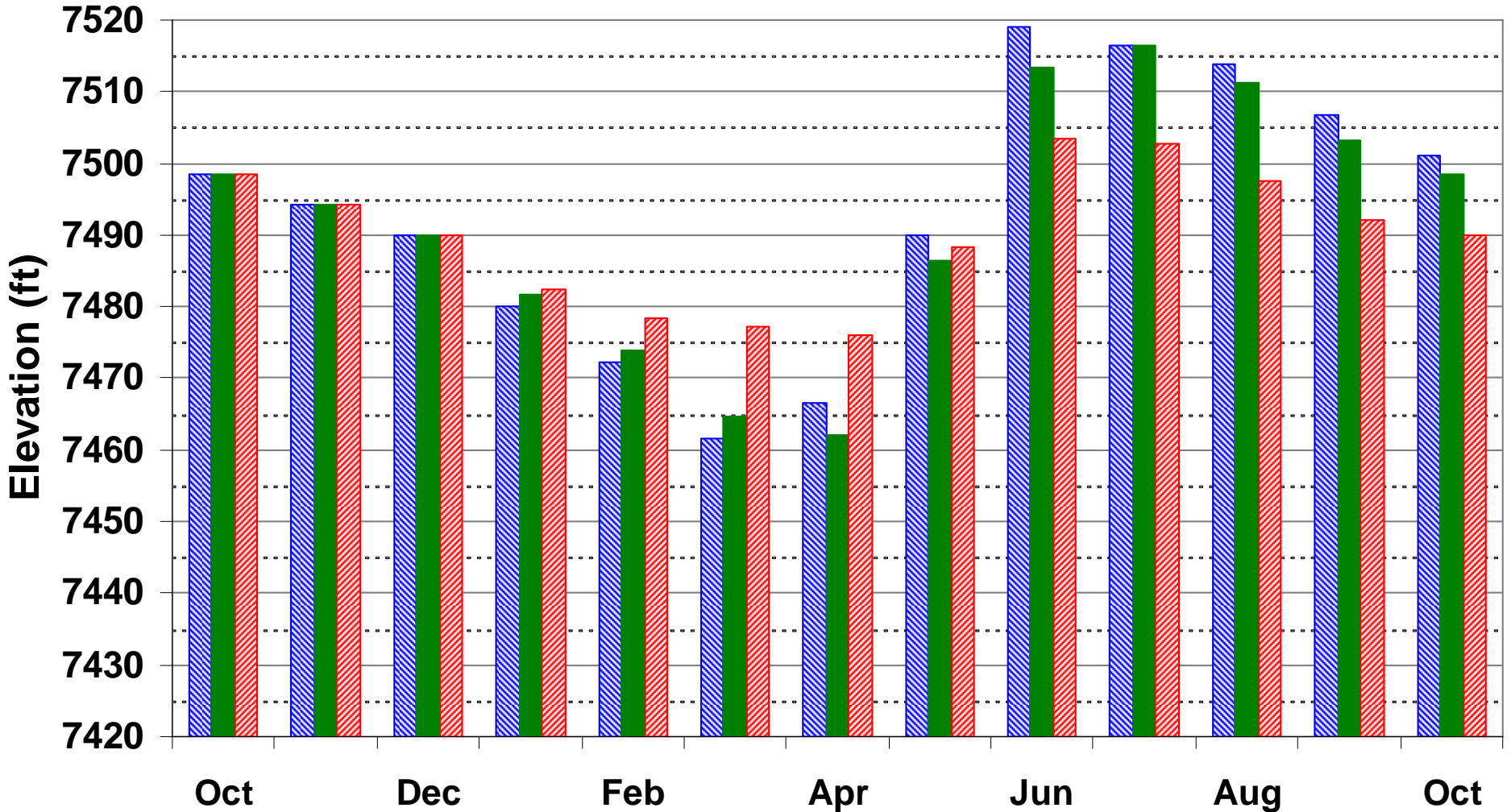
Unregulated Blue Mesa Inflow

Monthly Average



Blue Mesa Elevation

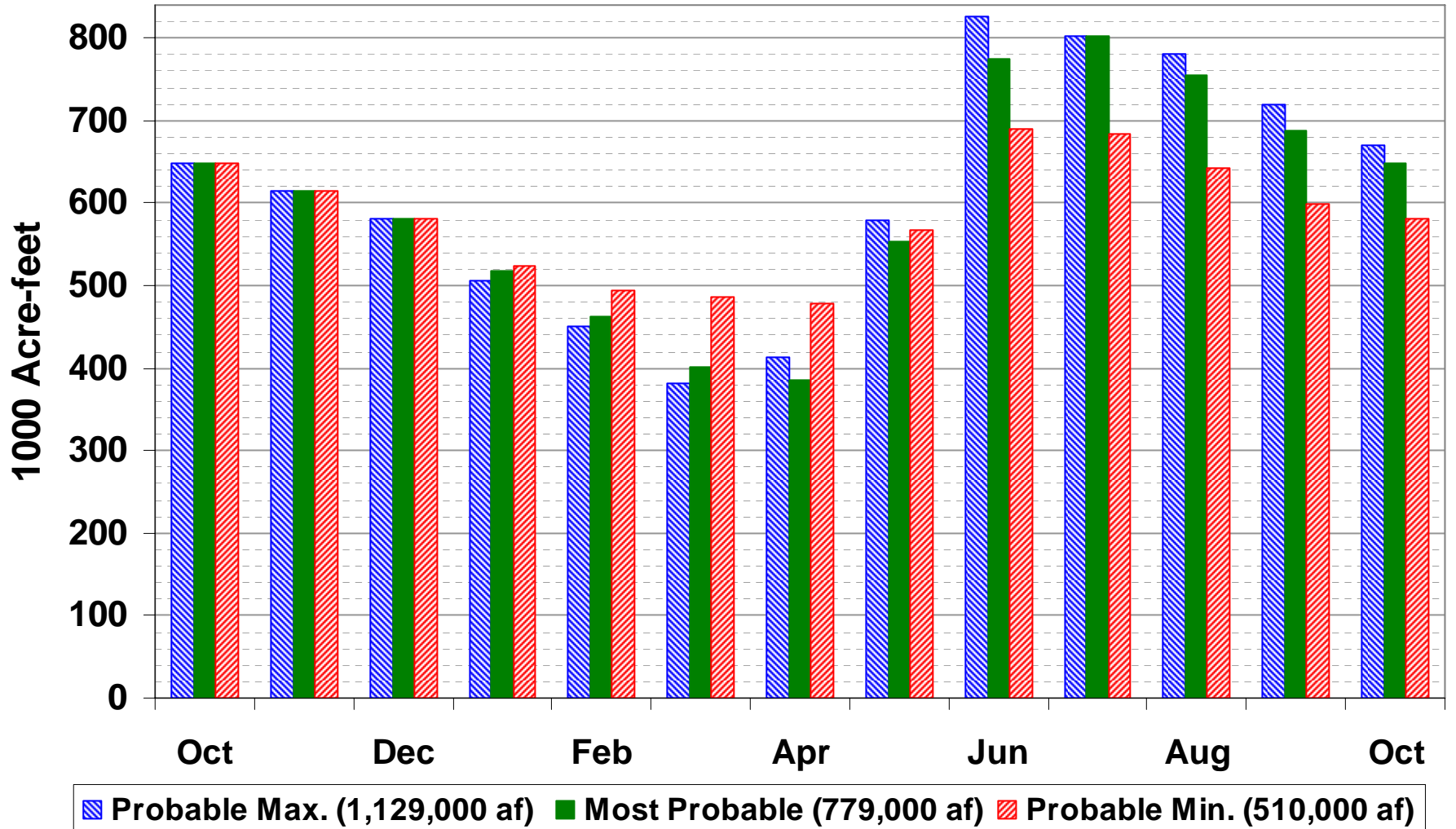
End of Month



■ Probable Max. (1,129,000 af) ■ Most Probable (779,000 af) ■ Probable Min. (510,000 af)

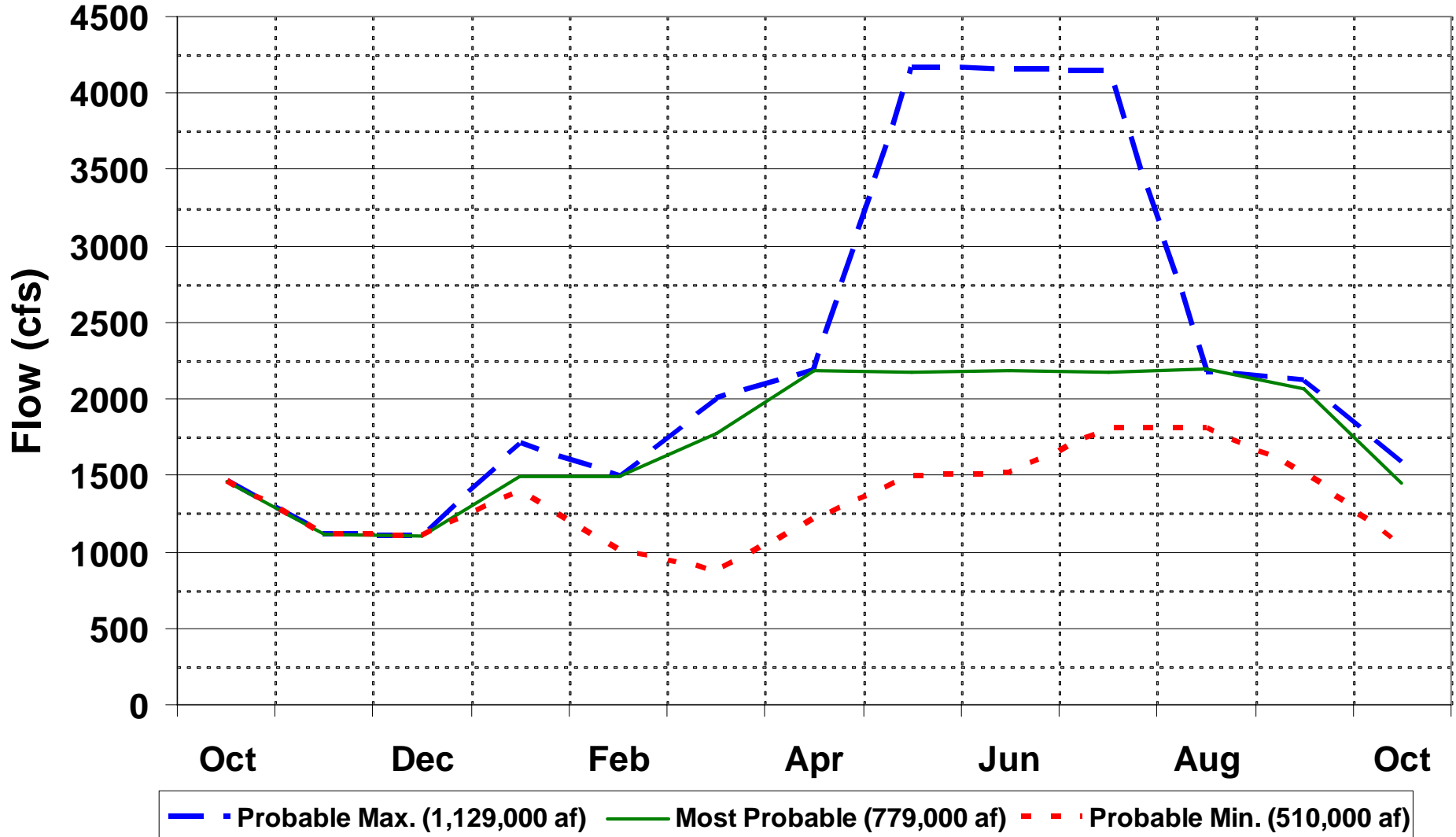
Blue Mesa Content

End of Month

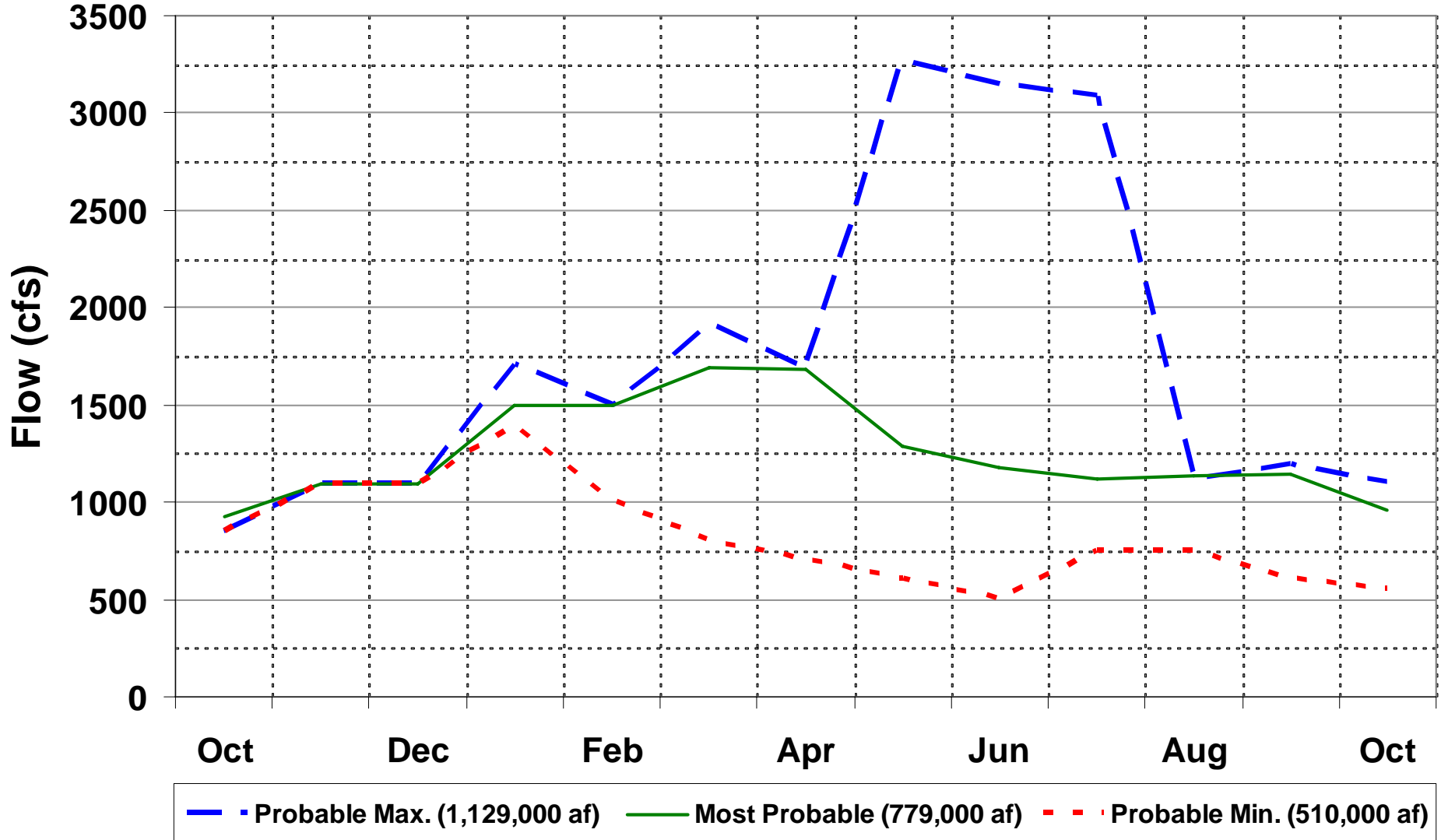


Crystal Release

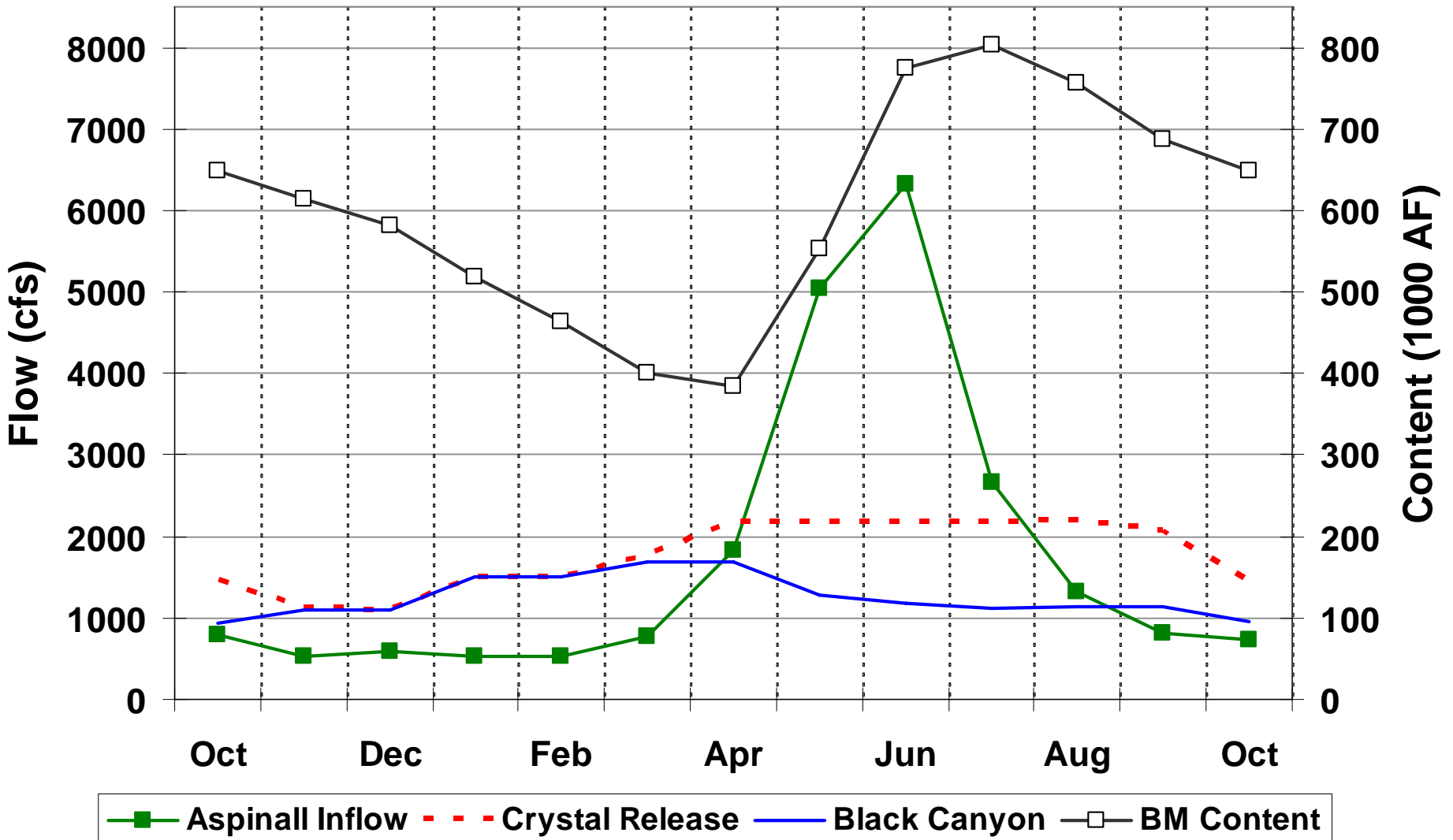
Monthly Average



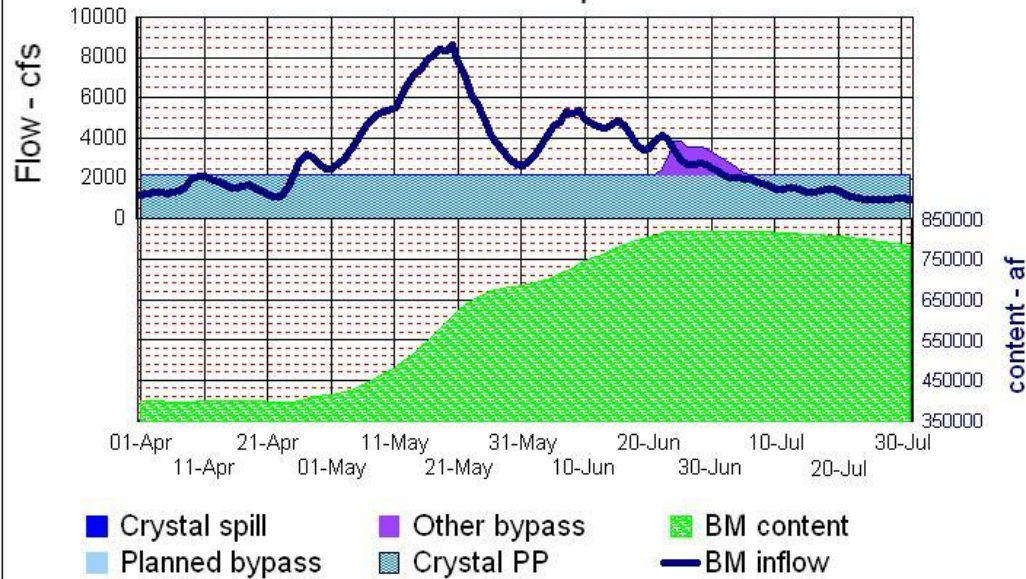
Black Canyon Monthly Average



Most Probable Monthly Average

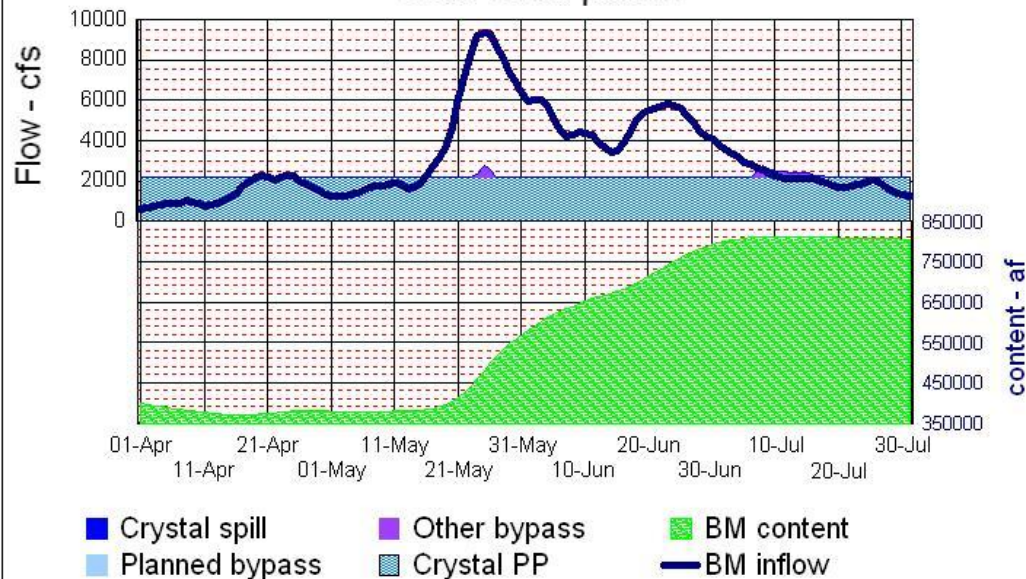


Possible Operation 1996 runoff pattern



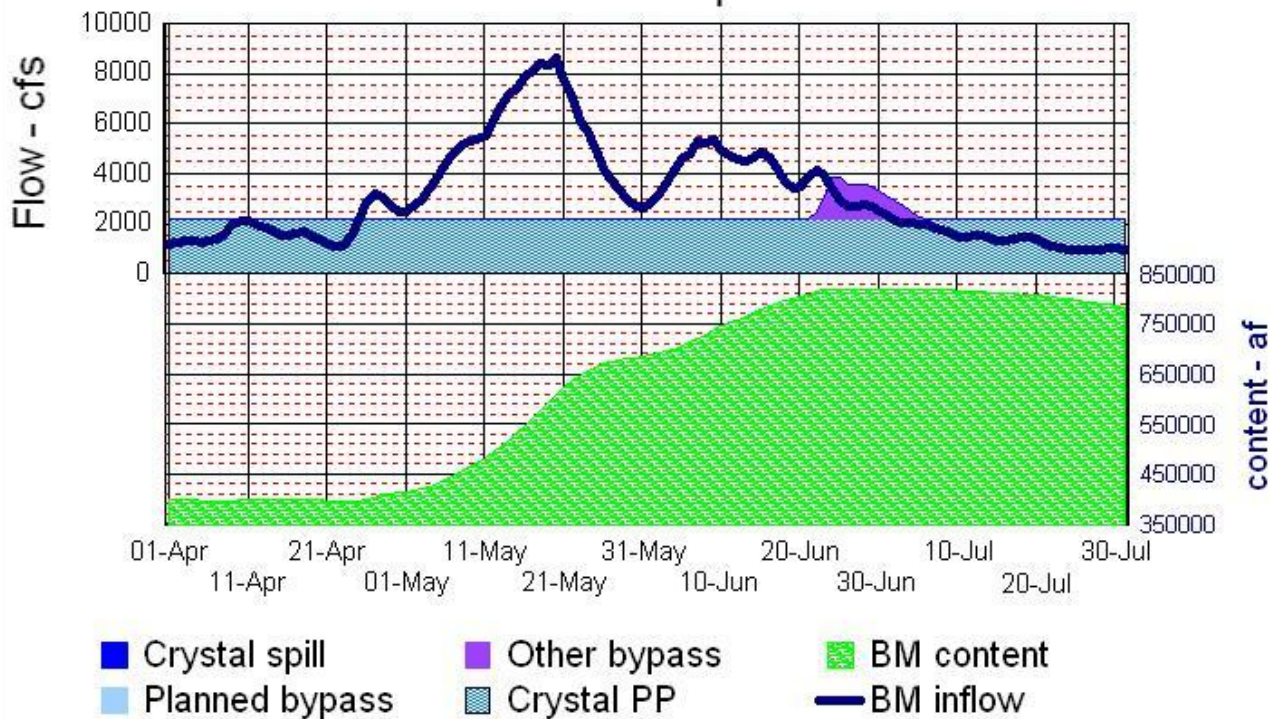
779,900	BM Unreg inflow
818,100	Max. BM content
7518.15	Max. BM elev.
779,200	July EOM content
7514.31	July EOM elev.
0	Spring Peak Vol.
27,200	Other bypass
0	Crystal spill

Possible Operation 2005 runoff pattern



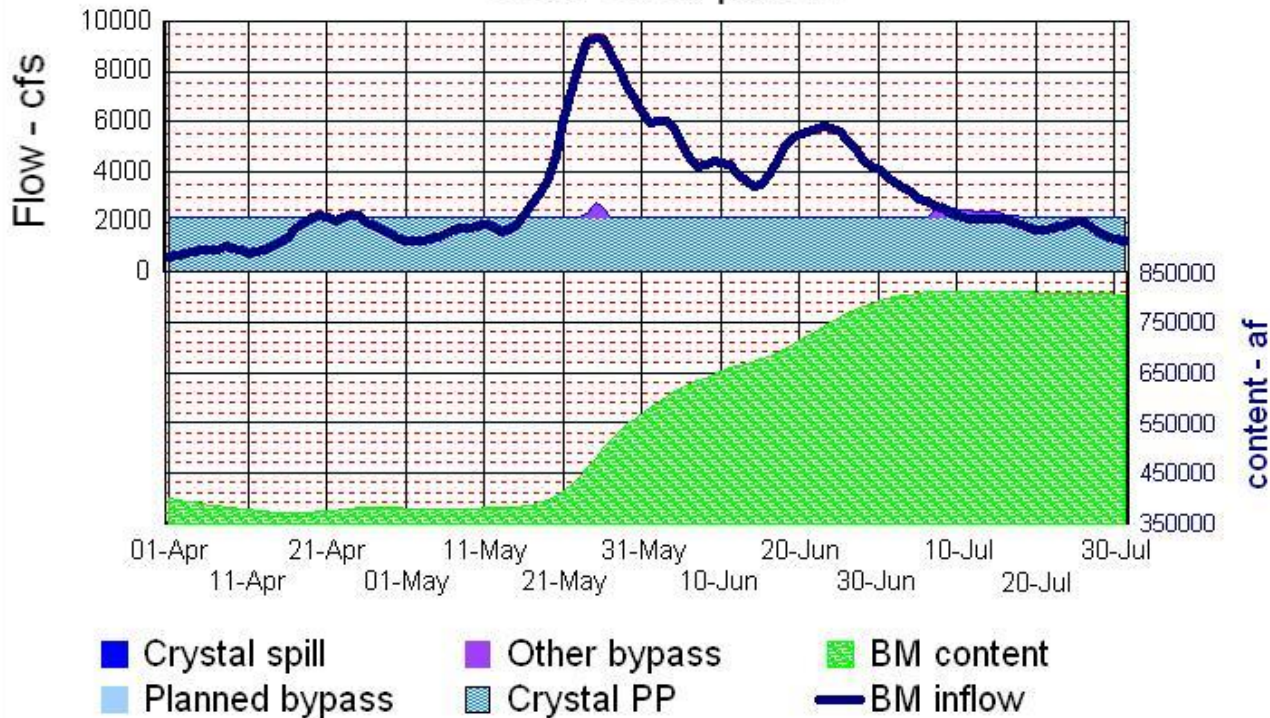
780,000	BM Unreg inflow
810,400	Max. BM content
7517.31	Max. BM elev.
798,200	July EOM content
7516.43	July EOM elev.
0	Spring Peak Vol.
8,200	Other bypass
0	Crystal spill

Possible Operation 1996 runoff pattern



- 779,900 BM Unreg inflow
- 818,100 Max. BM content
- 7518.15 Max. BM elev.
- 779,200 July EOM content
- 7514.31 July EOM elev.
- 0 Spring Peak Vol.
- 27,200 Other bypass
- 0 Crystal spill

Possible Operation 2005 runoff pattern



780,000 BM Unreg inflow

810,400 Max. BM content

7517.31 Max. BM elev.

798,200 July EOM content

7516.43 July EOM elev.

0 Spring Peak Vol.

8,200 Other bypass

0 Crystal spill

Gunnison River Basin, CO

