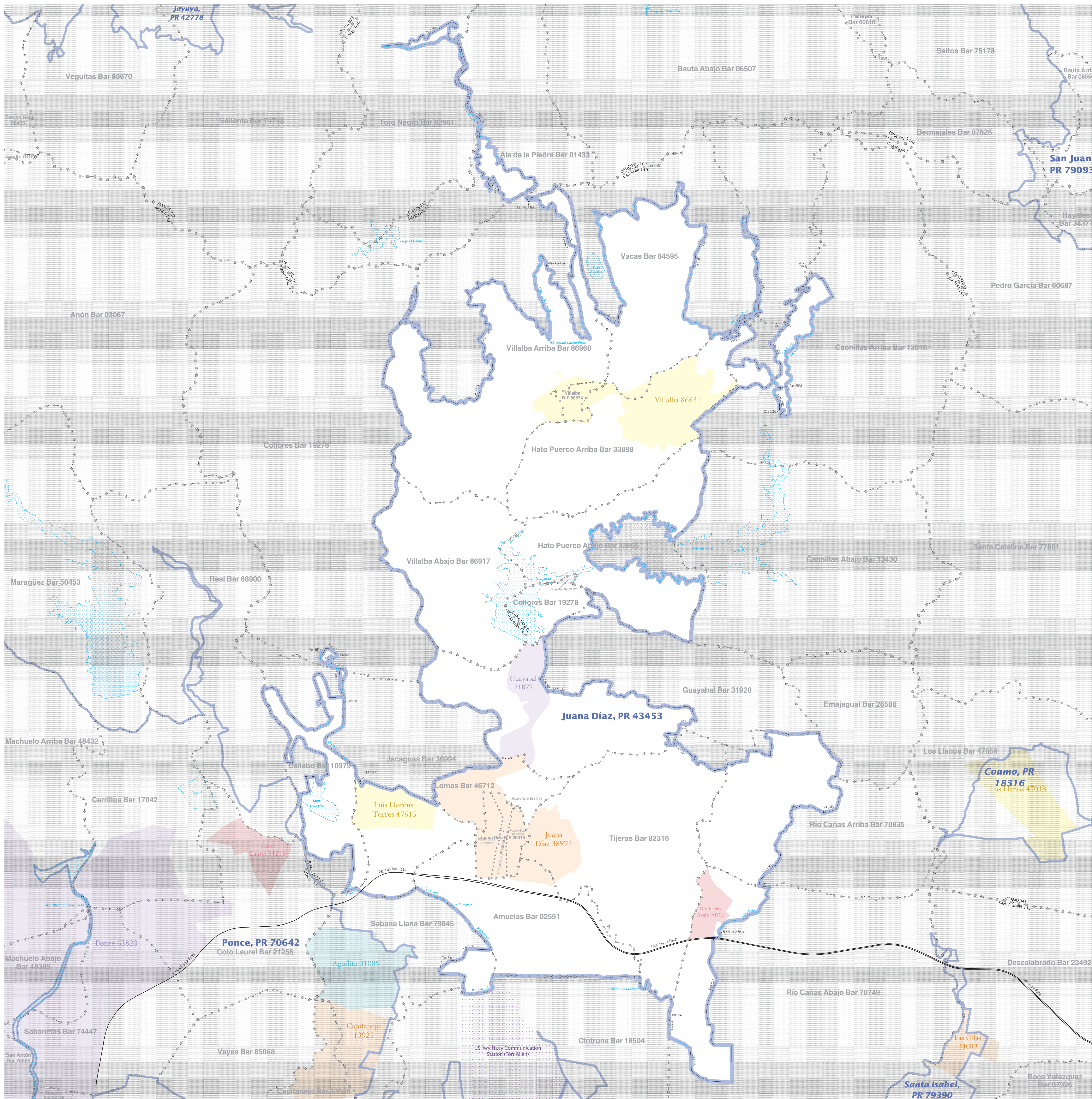


URBANIZED AREA OUTLINE MAP (CENSUS 2000)

Juana Díaz, PR



LEGEND

| | |
|--|--------------------------|
| SYMBOL DESCRIPTION / SYMBOL | NAME/STYLE |
| State or Statistically Equivalent Area | PUERTO RICO 72 |
| Urban Cluster | Arecibo, PR 03034 |
| | Utado, PR 89812 |
| Municipio | COAMO 043 |
| Barrio or Barrio-Pueblo | Zanja Bar 88508 |
| Subbarrio | La Cruz 40248 |
| Comunidad or Zona Urbana | San Juan 76770 |

Where state, municipio, barrio, barrio-pueblo, and/or subbarrio boundaries coincide, the map shows the boundary equal to or only the highest ranking of these boundaries.

| | | | |
|---|---------------|----------------------------------|---------------|
| FEATURE | SYMBOL | FEATURE | SYMBOL |
| Major Roads | — | Stream or Shoreline ¹ | — |
| Other Roads ¹ | — | Large River or Lake | — |
| Railroad ¹ | — | Military Installation | — |
| Pipeline or Power Line ¹ | — | Outside Subject Area | — |
| Ridge/line of other physical feature ¹ | — | Major Airports | — |
| Nonvisible Boundary ¹ | — | | |
| Other Boundary Feature ¹ | — | | |

¹ Feature shown only when coincident with the subject urbanized area / urban cluster boundary.
² Feature coincident with the boundary of an entity other than the subject urbanized area / urban cluster.

The urban areas (urbanized areas and urban clusters) are defined using Census 2000 blocks and population data for statistical purposes only. The detailed criteria for defining urban areas were published in the Federal Register (67 FR 11661). All legal boundaries and names are as of January 1, 2000. The boundaries shown on this map are for Census Bureau statistical data collection and tabulation purposes only; their depiction and designation for statistical purposes does not constitute a determination of jurisdictional authority or rights of ownership or entitlement.
 Source: U.S. Census Bureau's TIGER database
 Projection: State-based Albers' Equal Area
 U.S. DEPARTMENT OF COMMERCE Economics and Statistics Administration U.S. Census Bureau

