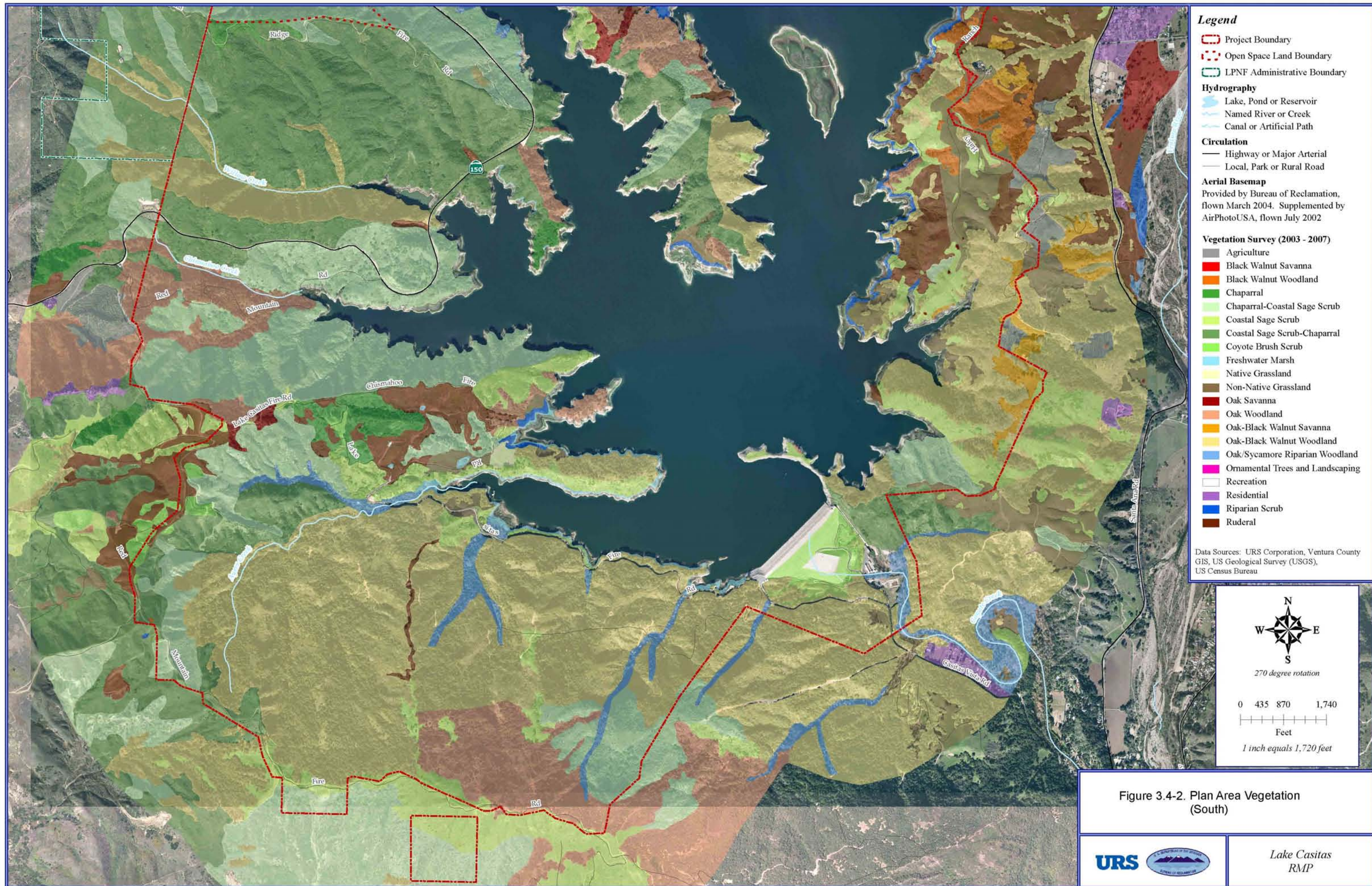


Figure 3.4-1. Plan Area Vegetation (North)



Lake Casitas RMP



Legend

- Project Boundary
- Open Space Land Boundary
- LPNF Administrative Boundary

Hydrography

- Lake, Pond or Reservoir
- Named River or Creek
- Canal or Artificial Path

Circulation

- Highway or Major Arterial
- Local, Park or Rural Road

Aerial Basemap
 Provided by Bureau of Reclamation, flown March 2004. Supplemented by AirPhotoUSA, flown July 2002

Vegetation Survey (2003 - 2007)

- Agriculture
- Black Walnut Savanna
- Black Walnut Woodland
- Chaparral
- Chaparral-Coastal Sage Scrub
- Coastal Sage Scrub
- Coastal Sage Scrub-Chaparral
- Coyote Brush Scrub
- Freshwater Marsh
- Native Grassland
- Non-Native Grassland
- Oak Savanna
- Oak Woodland
- Oak-Black Walnut Savanna
- Oak-Black Walnut Woodland
- Oak/Sycamore Riparian Woodland
- Ornamental Trees and Landscaping
- Recreation
- Residential
- Riparian Scrub
- Ruderal


Data Sources: URS Corporation, Ventura County GIS, US Geological Survey (USGS), US Census Bureau

N
W E
S

270 degree rotation

0 435 870 1,740
Feet
1 inch equals 1,720 feet

Figure 3.4-2. Plan Area Vegetation (South)




Lake Casitas
RMP

T:\Lake_Casitas\deliverables\RMP\VegetationSouth.mxd

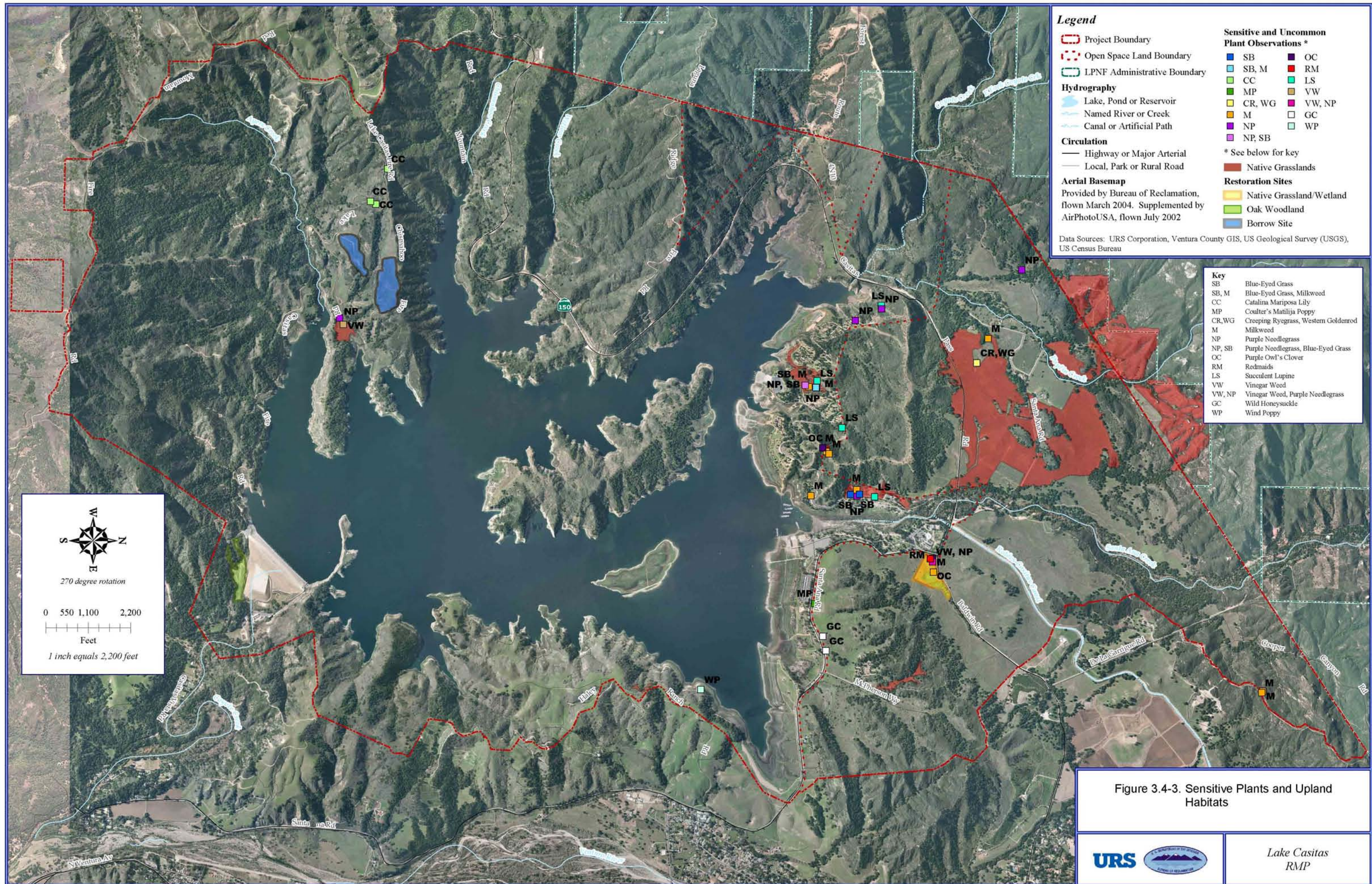
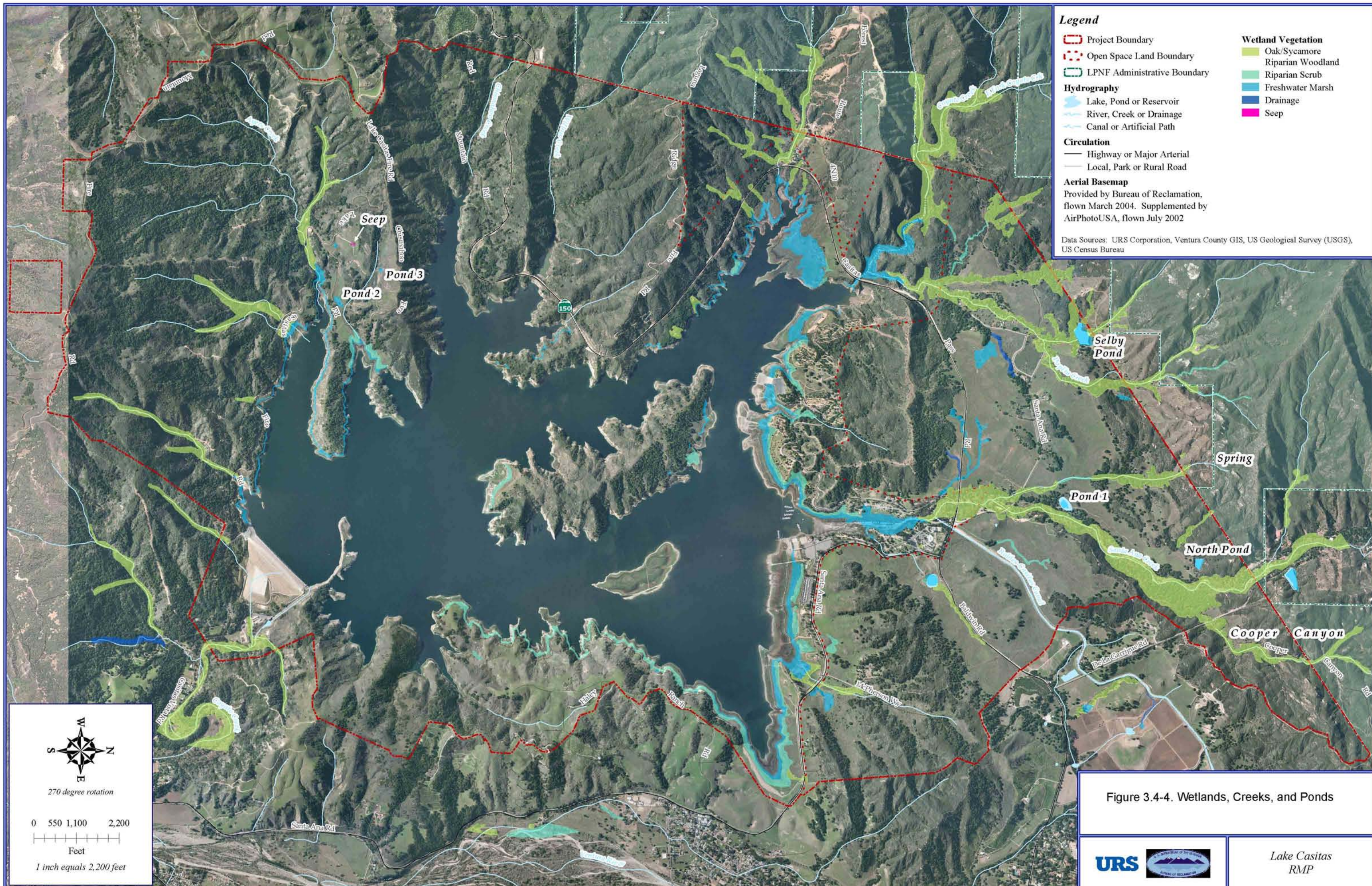
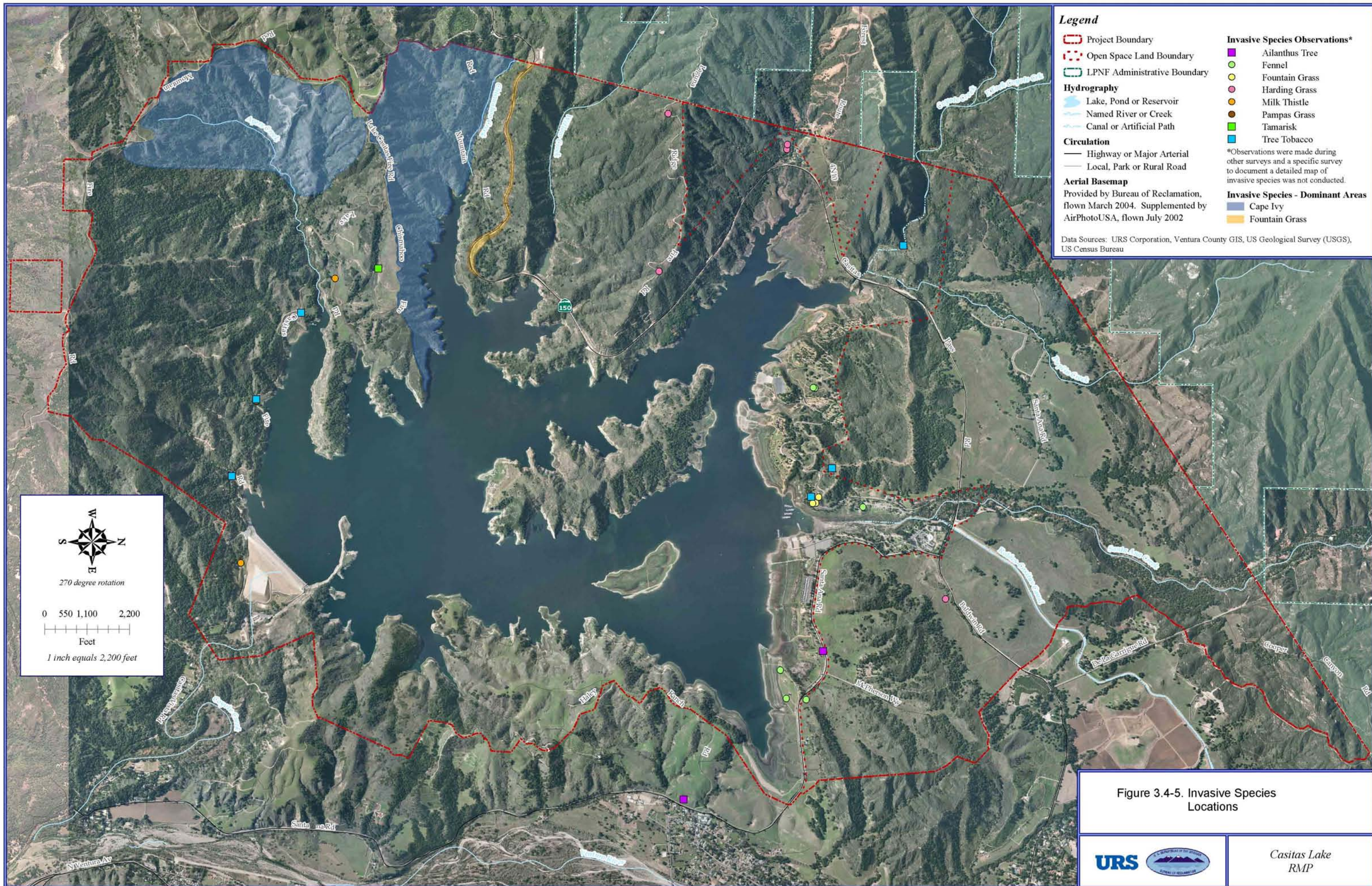


Figure 3.4-3. Sensitive Plants and Upland Habitats



Lake Casitas RMP





Legend

- Project Boundary
- Open Space Land Boundary
- LPNF Administrative Boundary

Hydrography

- Lake, Pond or Reservoir
- Named River or Creek
- Canal or Artificial Path

Circulation

- Highway or Major Arterial
- Local, Park or Rural Road

Aerial Basemap
 Provided by Bureau of Reclamation, flown March 2004. Supplemented by AirPhotoUSA, flown July 2002

Data Sources: URS Corporation, Ventura County GIS, US Geological Survey (USGS), US Census Bureau

Invasive Species Observations*

- Ailanthus Tree
- Fennel
- Fountain Grass
- Harding Grass
- Milk Thistle
- Pampas Grass
- Tamarisk
- Tree Tobacco

*Observations were made during other surveys and a specific survey to document a detailed map of invasive species was not conducted.

Invasive Species - Dominant Areas

- Cape Ivy
- Fountain Grass




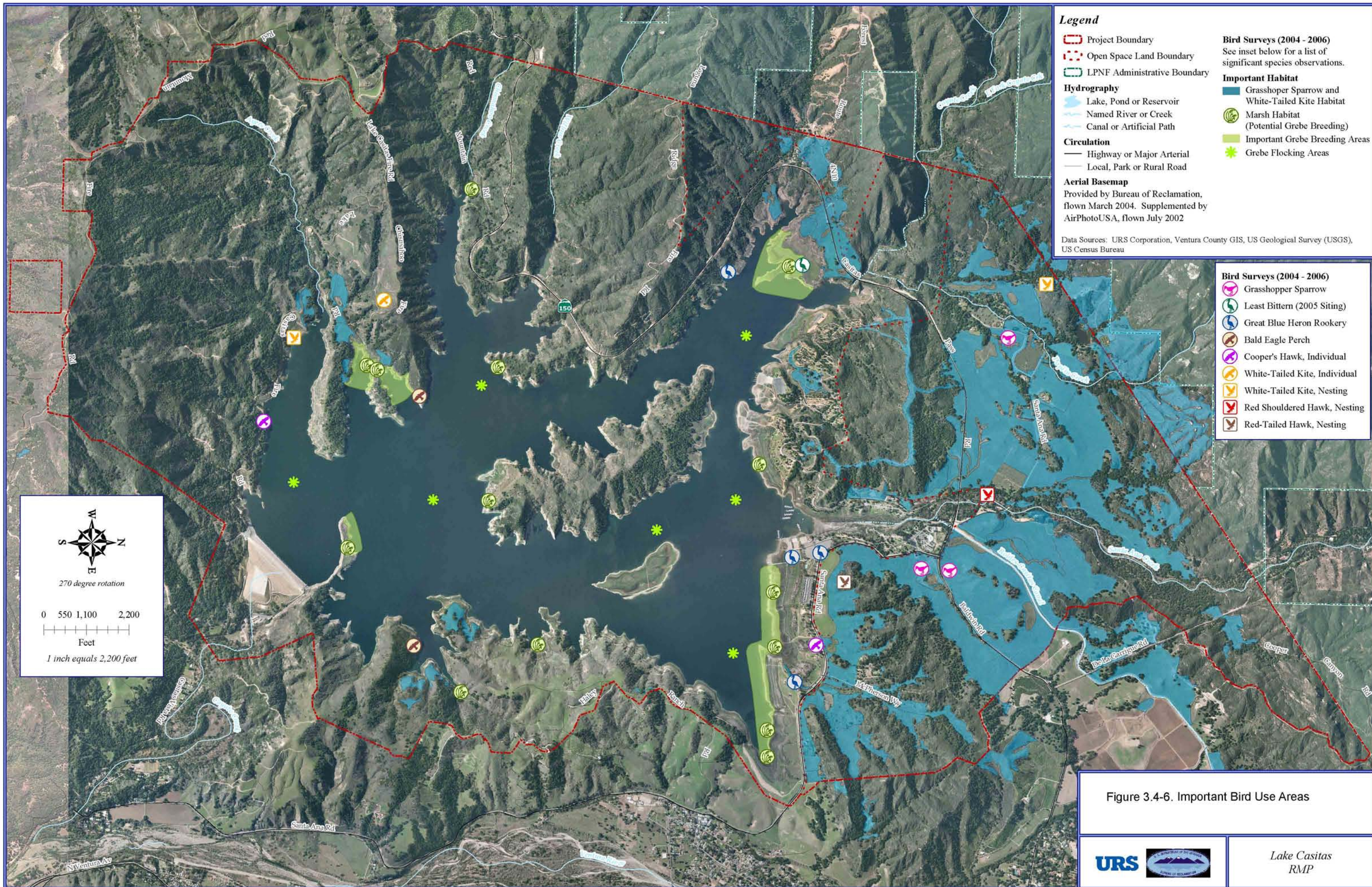

 270 degree rotation
 0 550 1,100 2,200
 Feet
 1 inch equals 2,200 feet

Figure 3.4-5. Invasive Species Locations





Casitas Lake
RMP



Legend

- Project Boundary
- Open Space Land Boundary
- LPNF Administrative Boundary

Hydrography

- Lake, Pond or Reservoir
- Named River or Creek
- Canal or Artificial Path

Circulation

- Highway or Major Arterial
- Local, Park or Rural Road

Aerial Basemap
 Provided by Bureau of Reclamation, flown March 2004. Supplemented by AirPhotoUSA, flown July 2002

Data Sources: URS Corporation, Ventura County GIS, US Geological Survey (USGS), US Census Bureau

Bird Surveys (2004 - 2006)

- Grasshopper Sparrow
- Least Bittern (2005 Siting)
- Great Blue Heron Rookery
- Bald Eagle Perch
- Cooper's Hawk, Individual
- White-Tailed Kite, Individual
- White-Tailed Kite, Nesting
- Red Shouldered Hawk, Nesting
- Red-Tailed Hawk, Nesting

North arrow with 270 degree rotation.

Scale bar: 0, 550, 1,100, 2,200 Feet.

1 inch equals 2,200 feet

Figure 3.4-6. Important Bird Use Areas

URS | | Lake Casitas RMP

T:\Lake_Casitas\deliverables\RMP\ImportantBirdUseAreas.mxd



Figure 3.7-1a. Casitas Dam and Spillway



Figure 3.7-1b. Overview of Casitas Dam Area



Figure 3.7-2. View of the Open Space Lands



Figure 3.7-3. Overview



Figure 3.7-4. Coyote Creek, Looking Southwest



Figure 3.7-5. View of the Open Space Lands from the Fire Road



Figure 3.7-6. View from Dead Horse Canyon, Looking Southwest



Figure 3.7-7. Coyote Creek, Looking West Toward Lookout Point on SR 150



Figure 3.7-8. Santa Ana Boat Ramp



Figure 3.7-9. Coyote Creek, Looking North Toward Coyote Boat Ramp



Figure 3.7-10. Coyote Creek, Looking Northwest Toward Mallard Camp



Figure 3.7-11a. A Special Events Area



Figure 3.7-11b. Special Events Area (Potential Amphitheater Site)



Figure 3.7-12. Boat and Trailer Storage Area

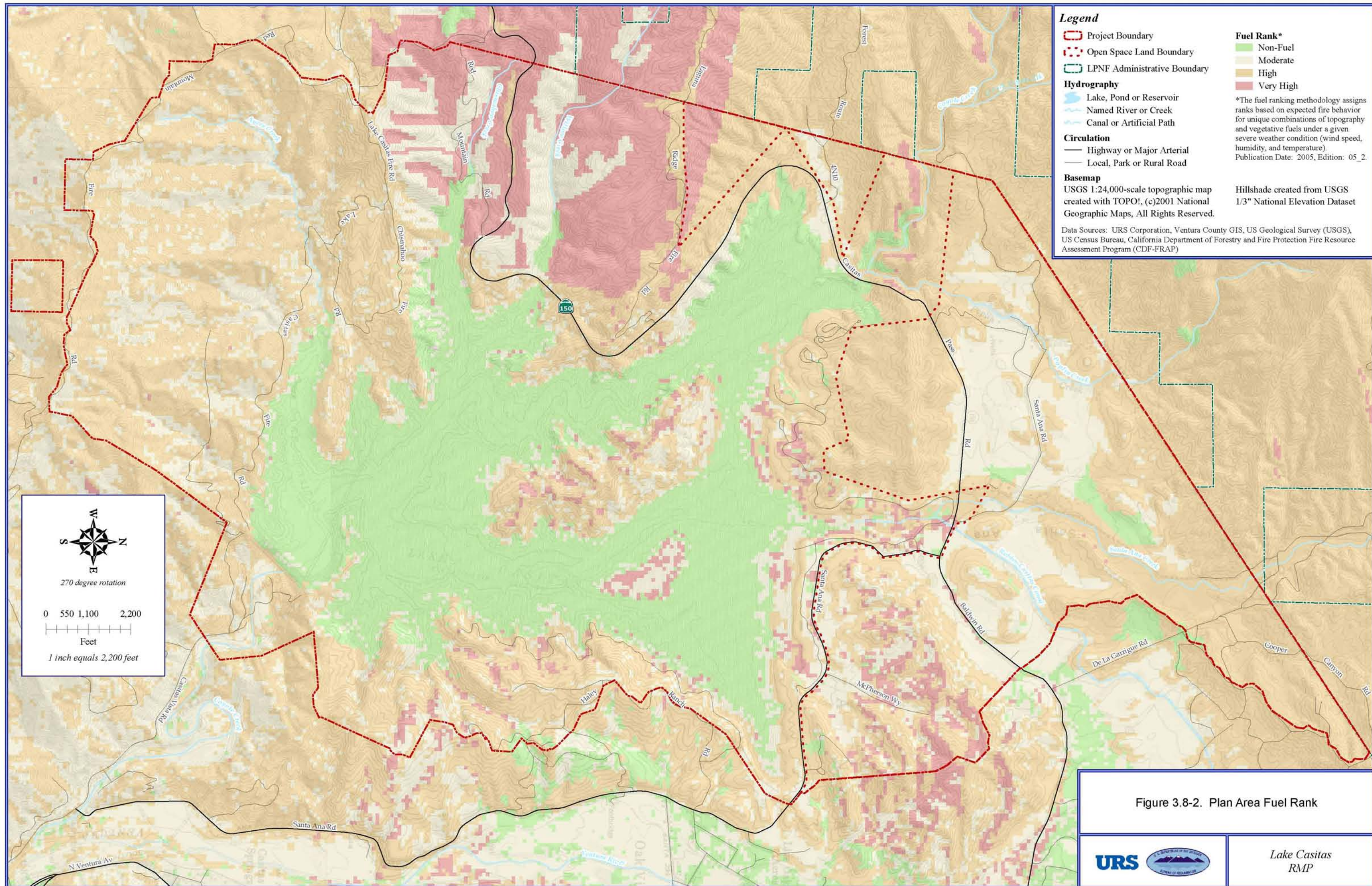
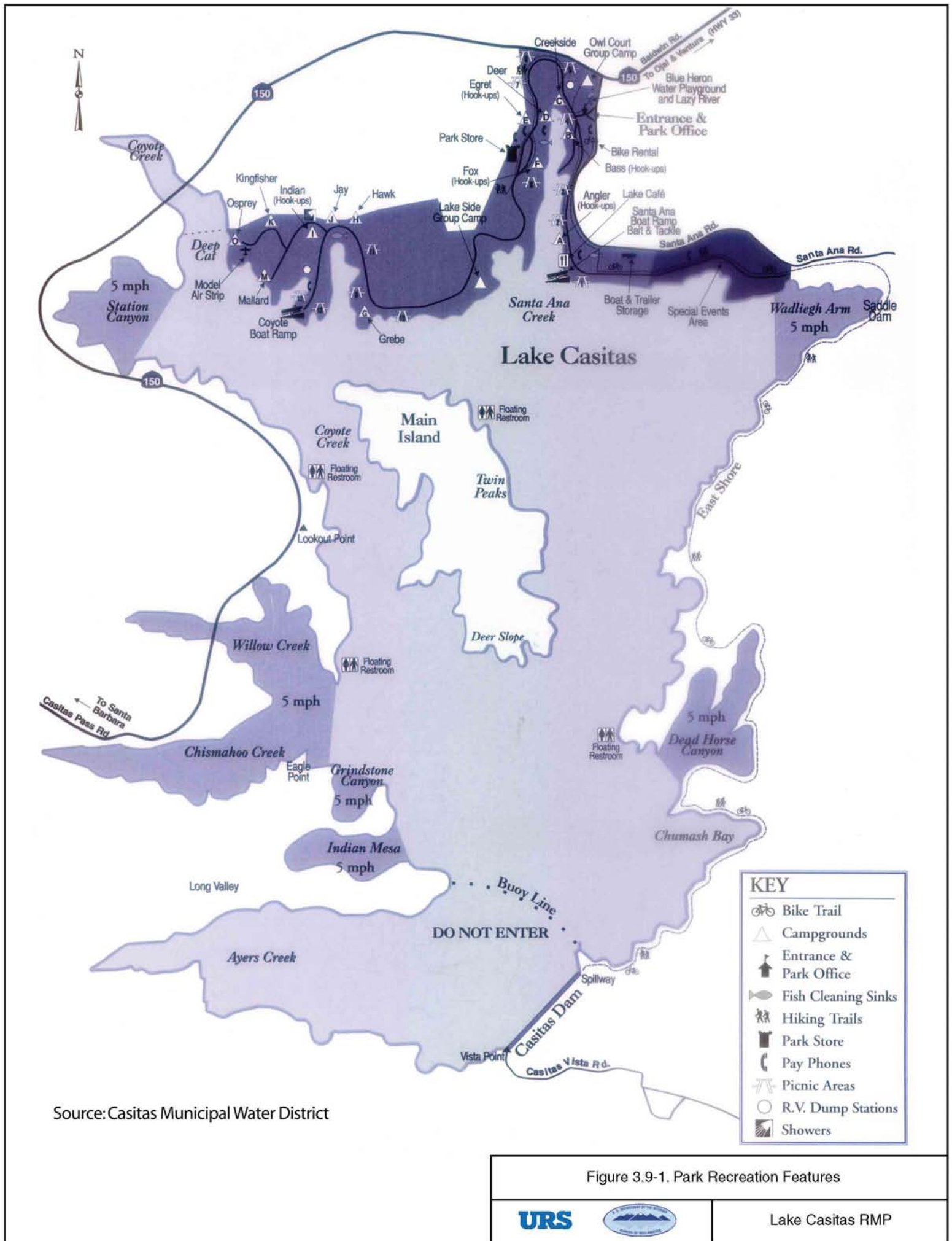


Figure 3.8-2. Plan Area Fuel Rank



Lake Casitas
RMP

T:\Lake_Casitas\deliverables\RMP\FuelRank.mxd



KEY	
	Bike Trail
	Campgrounds
	Entrance & Park Office
	Fish Cleaning Sinks
	Hiking Trails
	Park Store
	Pay Phones
	Picnic Areas
	R.V. Dump Stations
	Showers

Source: Casitas Municipal Water District

Figure 3.9-1. Park Recreation Features

URS Lake Casitas RMP

