

2007 Fire Season

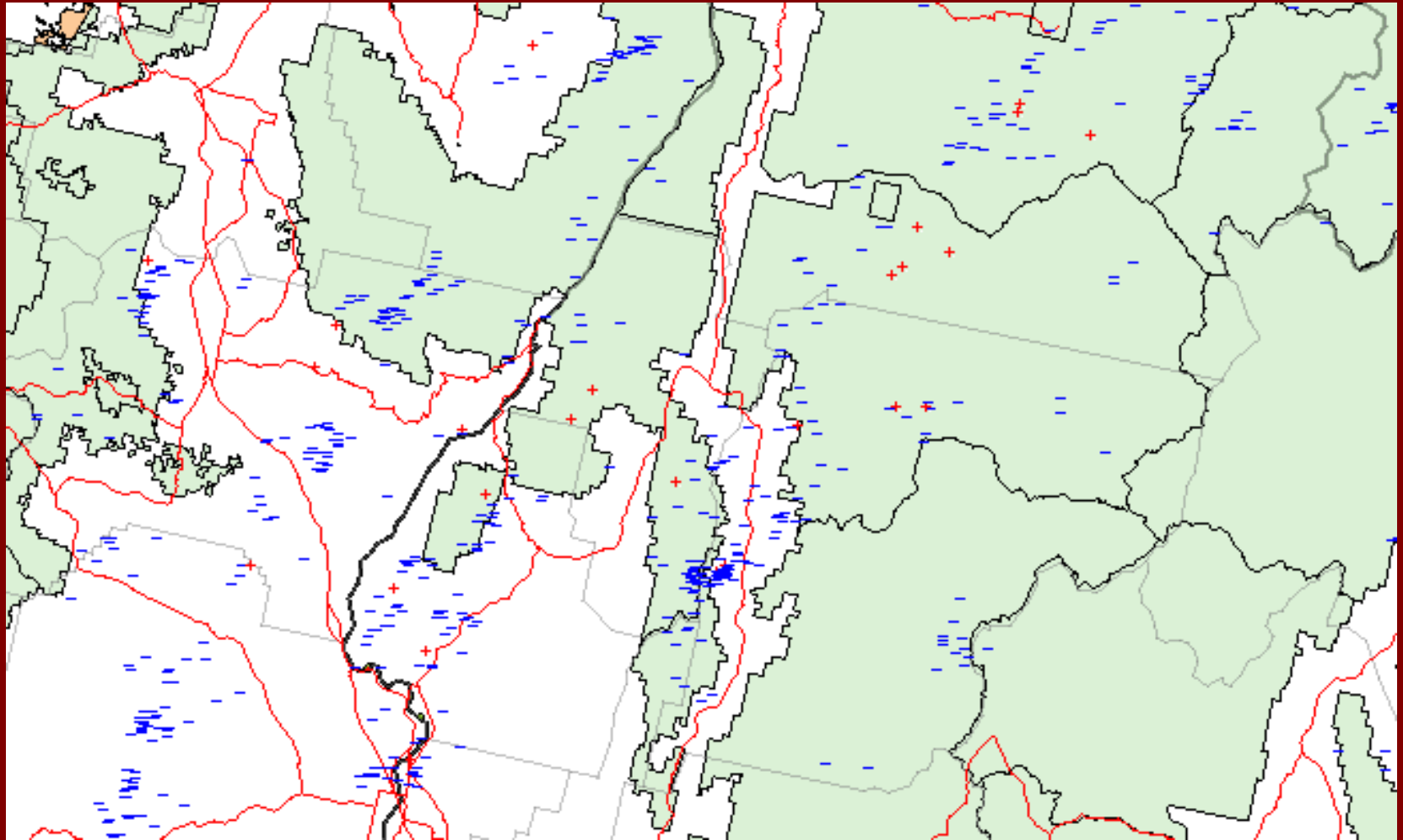
A large wildfire is burning in a forest. The fire is intense, with bright orange and yellow flames rising from the trees. Thick, dark smoke billows upwards, filling the sky. The foreground shows a dense forest of green evergreen trees, some of which are partially obscured by the smoke and fire.

Zena near Krassel Helibase

4/27 - 7/5

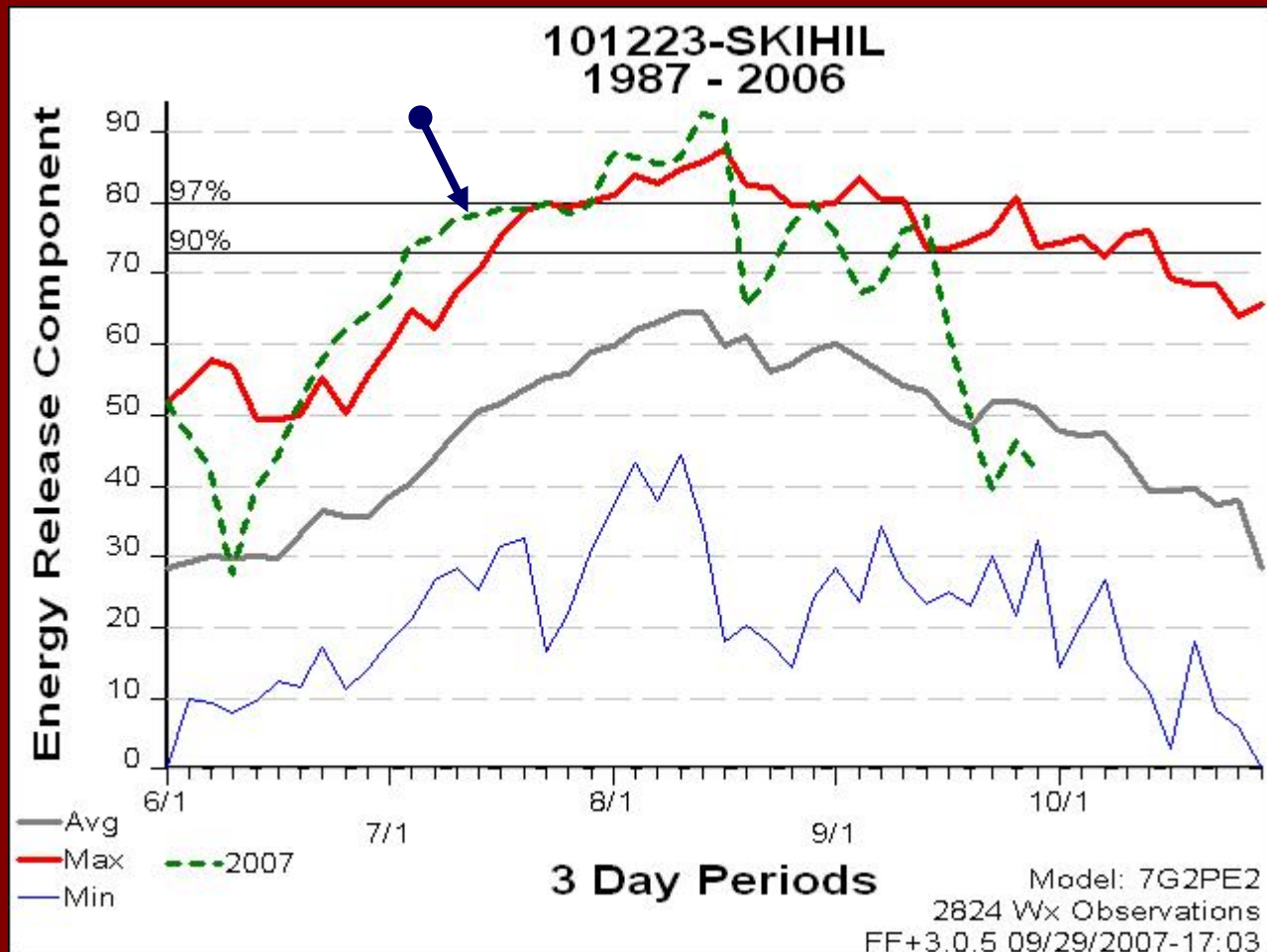
- 4/27/07 brings the first fire of the season, *Mill Creek*.
- 4/27 to 6/27 brings four fires: *Stoney Point, Boy Hootie, Bear, and Kat*.
- 6/17 *Tag WFU* fire is discovered.
- 6/30 *Brownlee* fire is first Type 3 fire of season.
- 7/1 through 7/5 three new fires on the Payette: *Lakey, Indian Ridge, and Pinehurst*.

Lightning Activity 7/6



Payette receives lightning Forest-wide.

ERCs on 7/6 were record highs and near the 97th percentile.



7/6 - 7/8

Over a 72 hour period, 18 new fires emerged.

Warm Springs led the pack resulting in the first IMT2 (Heintz) on the Payette for the 2007 fire season.

- *Warm Springs*
- *Springs*
- *Peck Mountain*
- *Lost Fork*
- *Cottonwood*
- *Zena*
- *Williams*
- *Washpan*
- *Blue Springs*
- *Poison*
- *Mica*
- *Corral*
- *Keithley*
- *Monroe*
- *Raines*
- *McCalla Creek WFU*
- *Buckhorn WFU*
- *Chimney Rock*

7/9 - 7/11

- *Raines* and *Zena* fires are intensifying and all others are reaching containment.
- Initial attack resources prepare themselves for another round of lightning.



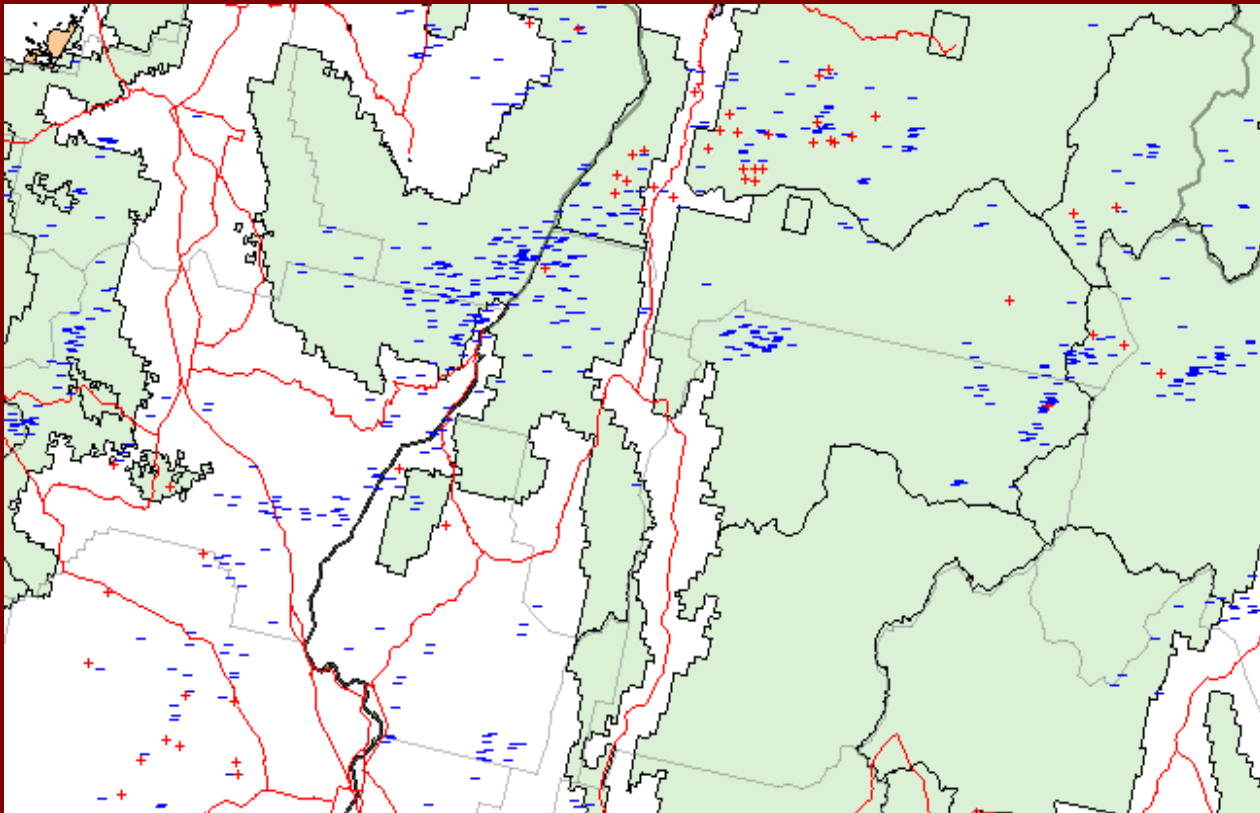
7/12

- Moderate lightning results in three new fires
 - *Slider*
 - *China*
 - *Chinook*
- Heintz' T2 team transitions from *Warm Springs* to *East Zone Complex*.



7/13

- Forest receives heavy lightning.
- *Krassel WFU Complex* orders Perkins FUMT.



7/14

Lightning activity continues and ignites 16 new fires.

- *Loon Complex-
6 fires*
- *Schoolmarm*
- *Indian*
- *Sawpit*
- *Log*
- *Steamboat*
- *Smith*
- *Oxbow*
- *Pita*
- *Deep Creek*
- *Goat WFU*

N9374Z Accident 7/14/07



No serious injuries.

7/15 - 21

- Forest continues to support fires from 7/14.
- 7/16 -7/17 Brings 6 new fires: *Pole, Loader, Sater, Miller, Big Lebowski, and Teapot.*
- *Indian Valley* fire ignites on 7/20.
- 7/18- 7/21 A break from lightning, but existing fires are intensifying.
- 7/21 Cottonwood WFU starts.

Indian Valley-A catch 7/20/07



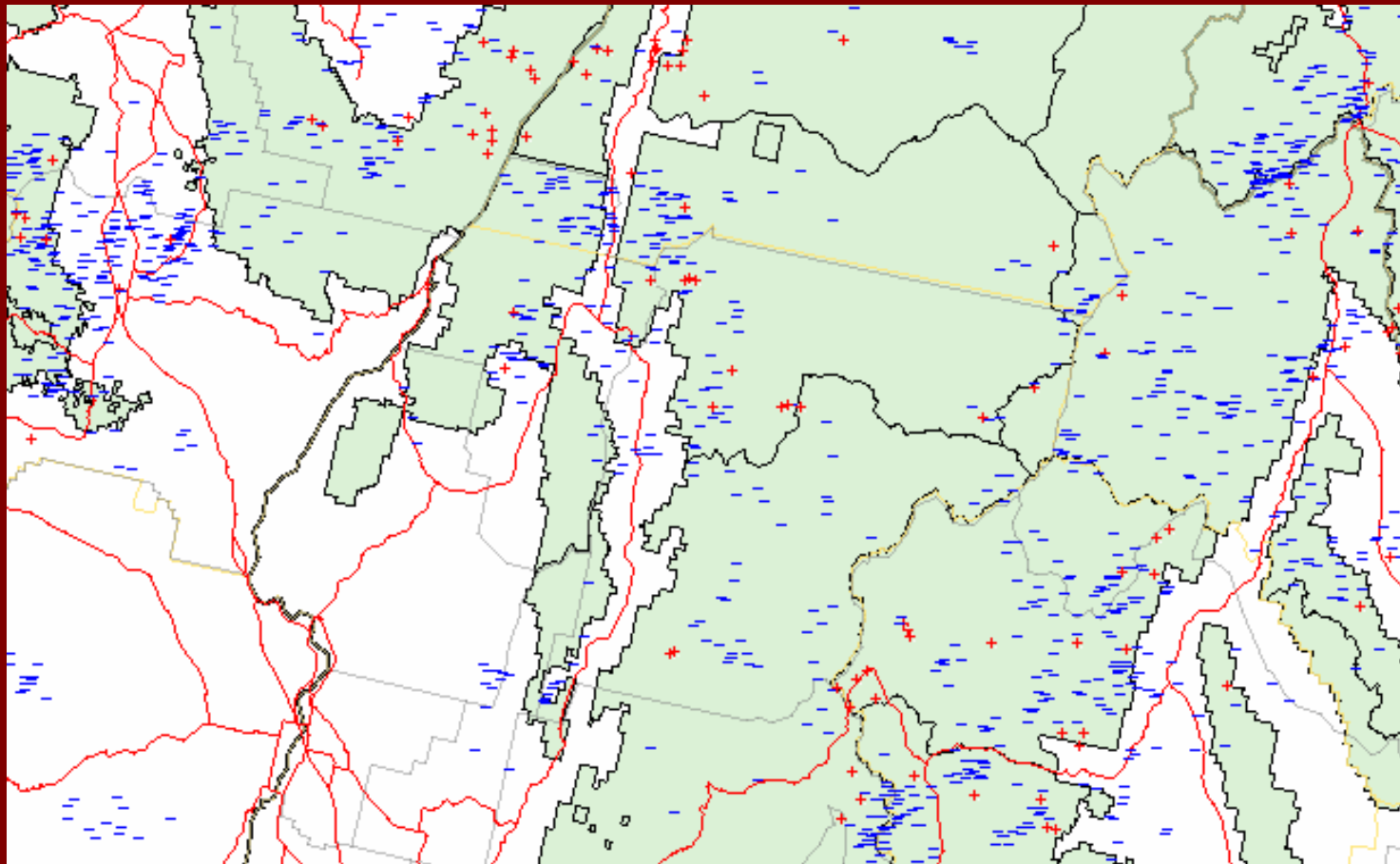
7/22

- *East Zone Complex* orders a Type 1 team (Pincha-Tulley).
 - *Zena* 12,600 acres: 18 structures threatened
 - *Loon* 5,500 acres: 300 structures threatened
 - *Raines* 6,540 acres: 12 Structures lost
- *Fisher* fire discovered.

Copenhaver Ranch 7/22/07



Lightning 7/22-7/30



7/22 - 7/30

Forest receives lightning resulting in 11 new fires.

- *Camp*
- *Fisher*
- *Wet*
- *Krassel*
- *Grass Mountain*
- *Aspen*
- *Patridge*
- *Green Mountain*
- *Round Indian*
- *County Line*
- *Teepee Springs*
- *Sheephorn WFU*

4HT Accident 7/25



No serious injuries.

8/1- 8/8

Three new fires: *Pearl, Little French and Horton.*



Horton Fire

8/9 - 8/29

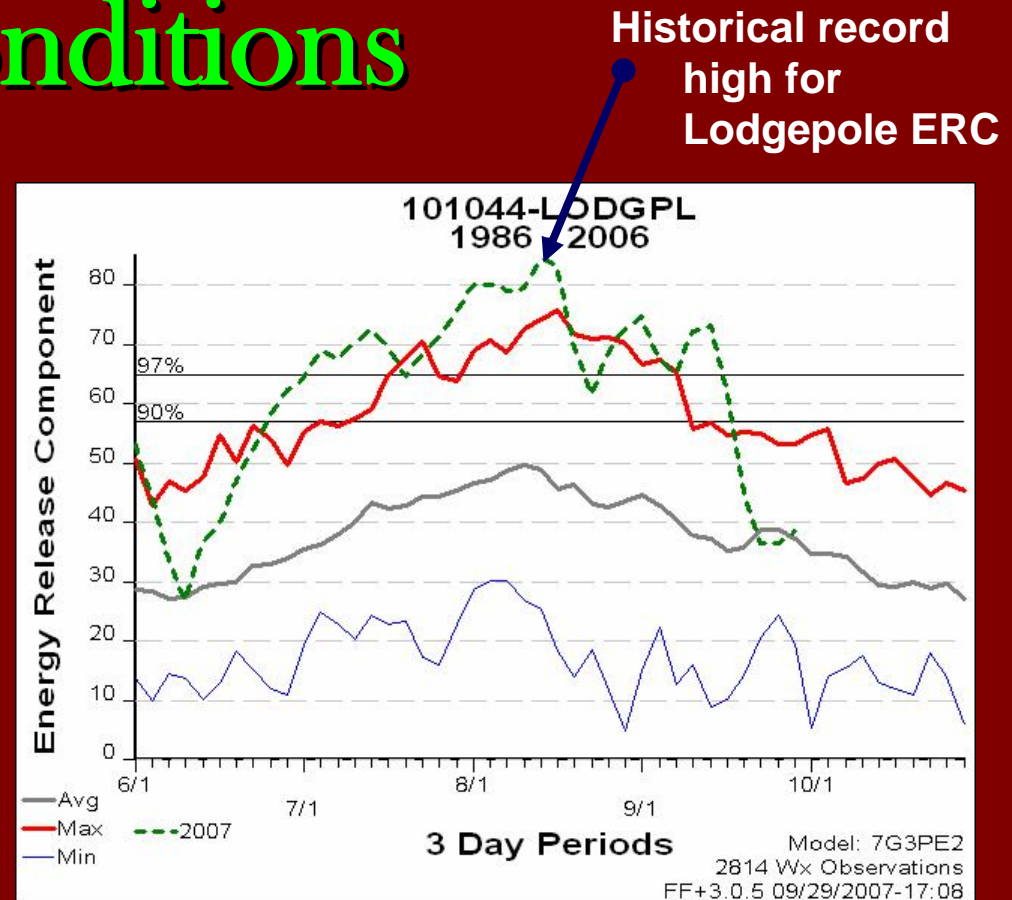
6 new fires on the
Forest.

- *Pine*
- *Iron Mountain*
- *Bearpile*
- *Number 179*
- *Little Weiser*
- *Wimstick WFU*



8/10 Fuels and Fire Behavior Conditions

- Highest indices ever recorded.
- Burning conditions peaked during this time with plume-dominated fires.



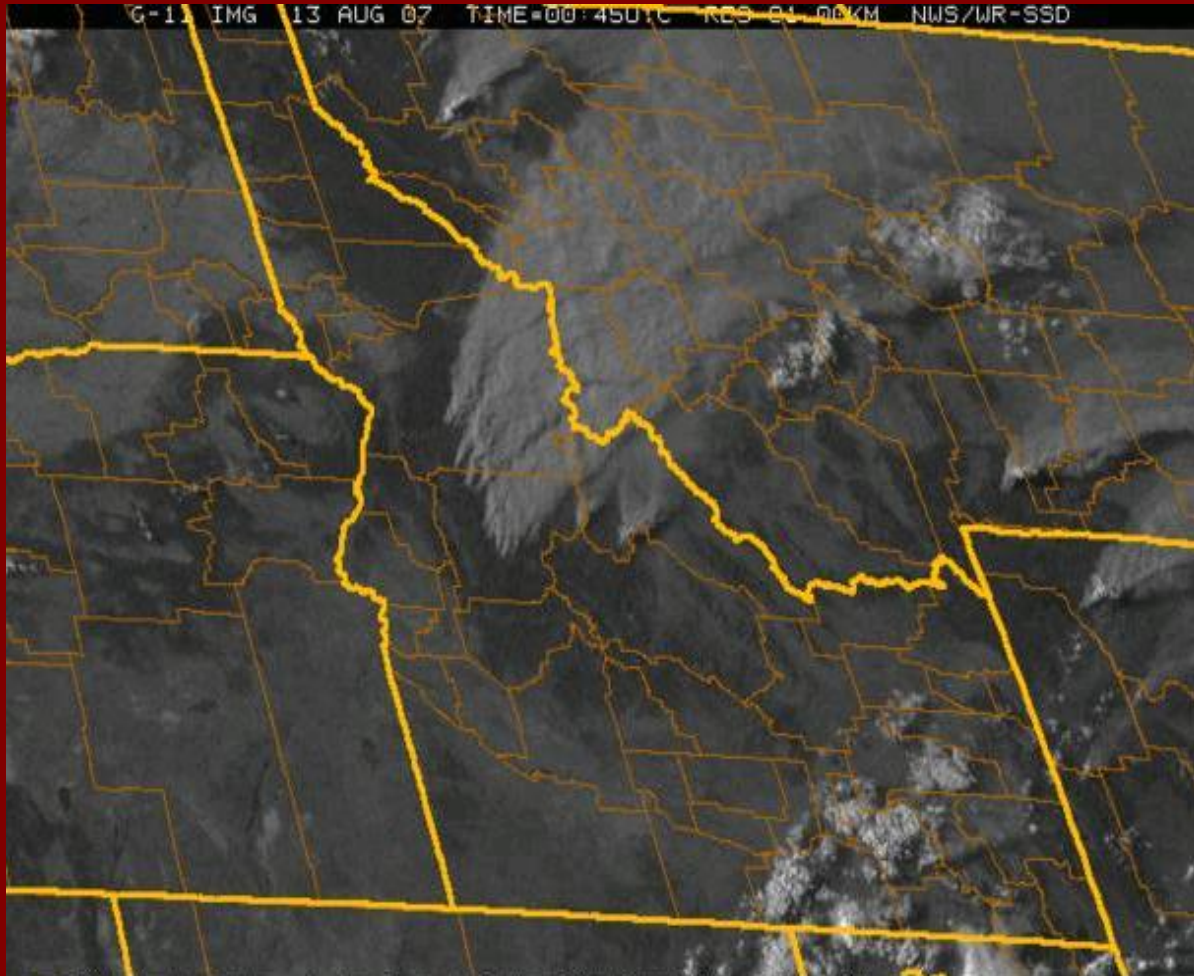
8/12

Williams Peak Lookout Threatened.



8/13

Large fires in Central Idaho viewed from satellite.



8/13 from Space Shuttle



8/30-9/3 Brings 7 new fires

- *Gray's Creek*
- *44*
- *Fork*
- *Transformer*
- *Helena*
- *Klineschmidt*
- *Cuprum*
- *Cave WFU*



9/4 - 9/16 7 more fires

- *Lockwood Point*
- *Mouse*
- *2 Snag*
- *Weasel*
- *Northspot*
- *Profile*
- *Citizen's Tree*



When the rains came...

- 9/18: McCall station reports .26" precip
- 9/19: McCall station reports .07" precip
- 9/22: McCall station reports .01" precip
- 9/23: McCall station reports .85" precip
- 9/29: McCall station reports .45" precip
- 9/30: McCall station reports .01" precip
- 10/1: McCall station reports .85" precip

Last Team was released on 9/24/07.

Season Statistics

- 86 = total number of statistical fires.
- 470,529 acres burned (384,236 suppression acres and 86,293 WFU acres).
- 17% of total acres protected by the Payette NF burned.
- On 9/23, the Payette's 86,293 WFU acres made up 92% of the total WFU acres reported for Region 4 and exceeded reported acres for Region 1.

Payette Team Summary

- 3 Area Command Teams
- 2 Type 1 IMT
- 2 NIMO teams
- 4 Type 2 IMT
- 3 FUMT
- 7 Buying teams
- 1 Aviation Safety & Assistance team
- 1 Fire & Aviation Safety & Assistance team
- 2 Accident Investigation teams

Type III Incidents

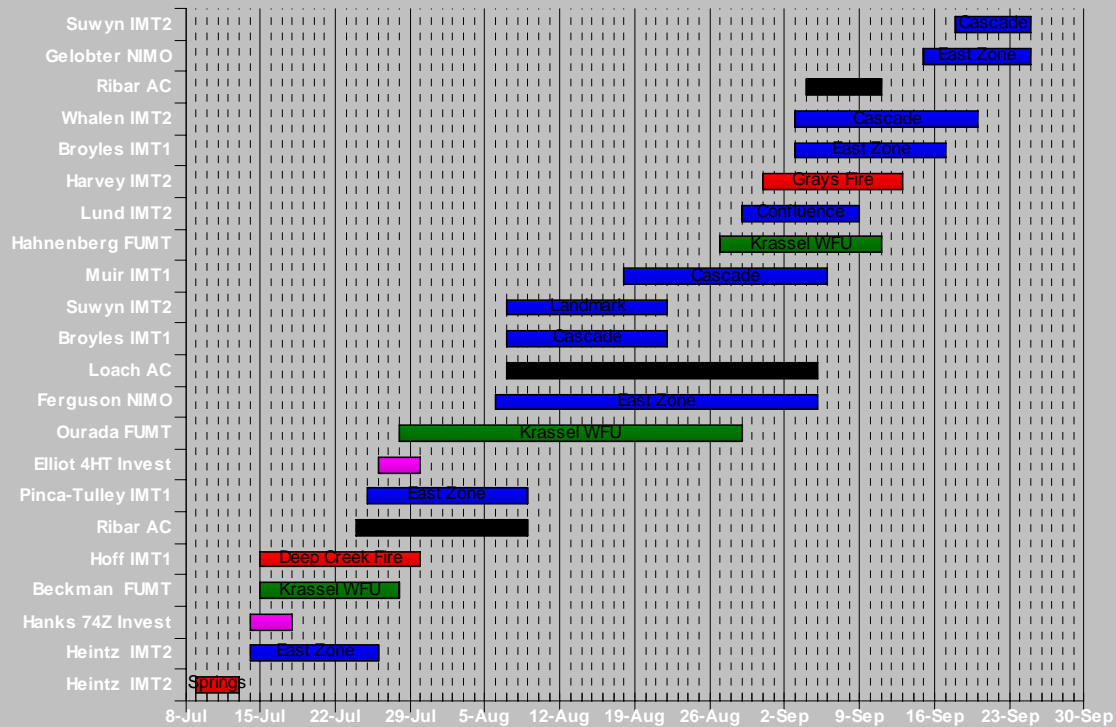
- Brownlee
- Peck Mountain
- Oxbow
- Indian Valley
- Horton
- Green Mountain
- Fisher
- Teepee Springs
- Sater Meadows
- China Mountain

Team Glide Path

PAF 2007 Incident Management Teams and Fire Use Management Teams*

Green: Fire Use Red: Perimeter Control Blue: Point Protection Black: Area Command Pink Investigation Team

317 team assignment days



* Chart does not include four IMT2 assigned to the Rattle Snake Fire Nez Perce NF which did structure protection along Salmon River on Payette NF

Aviation Summary

McCall Airport

- McCall was the second busiest airport in Idaho.
- 332 take-offs and landings on 7/28.

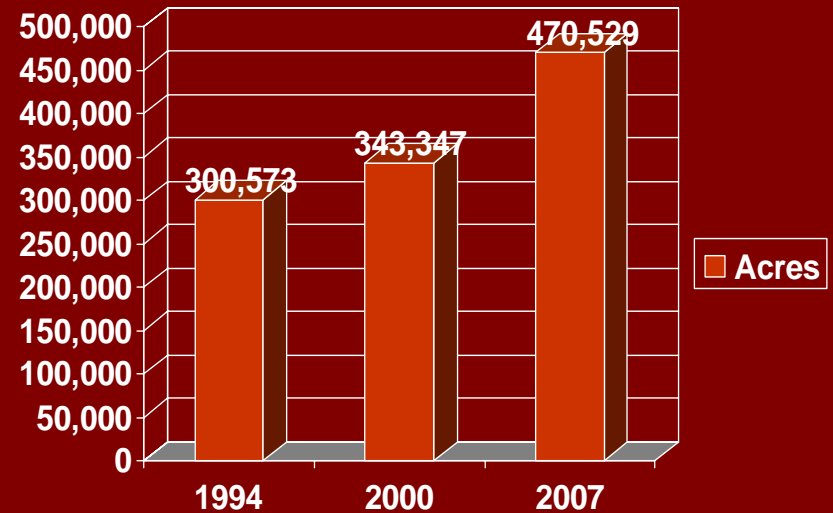
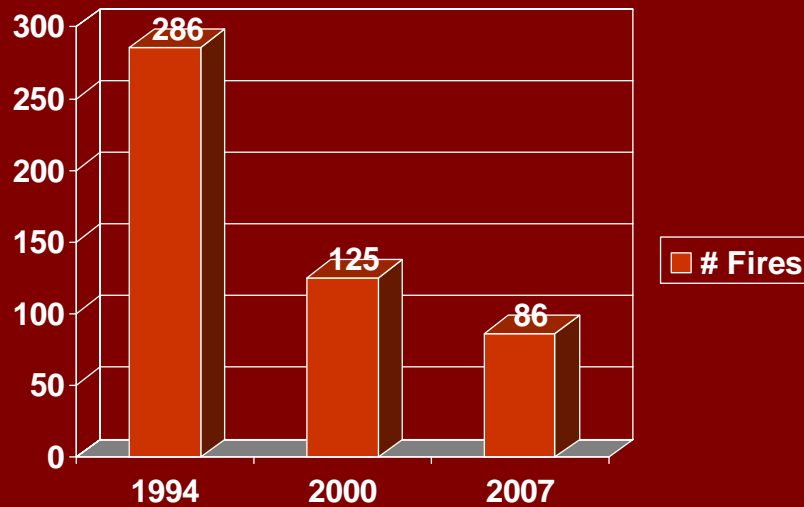
Air Tanker Base

- 847,094 Gallons of retardant
- 766 Missions
- 484.72 Flight hours

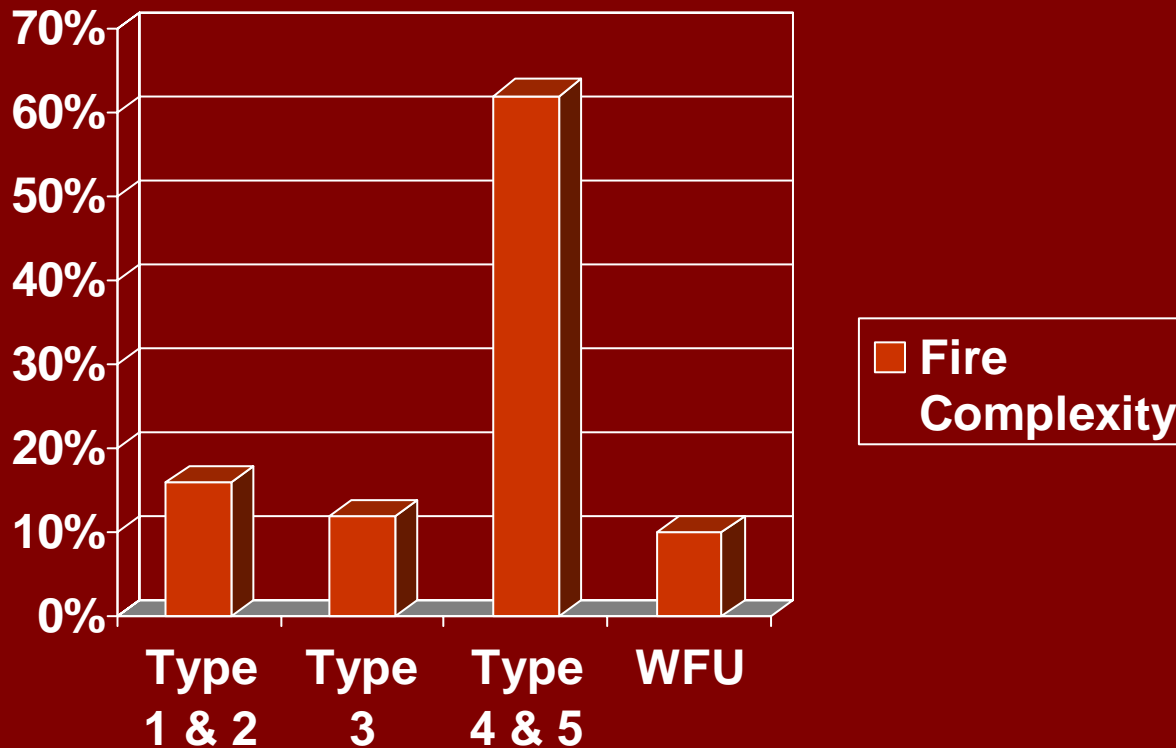
Payette Aviation Dispatch Summary

- 130 contract fixed-wing flights
- 222 smokejumper flights
- 133 Price Valley missions
- 95 Krassel missions
- Total of 1052 scheduled and completed flights.

Acres / # Fires Comparison



2007 Fires by Complexity



**Thanks for a good, safe year
and for all of your hard work.**