

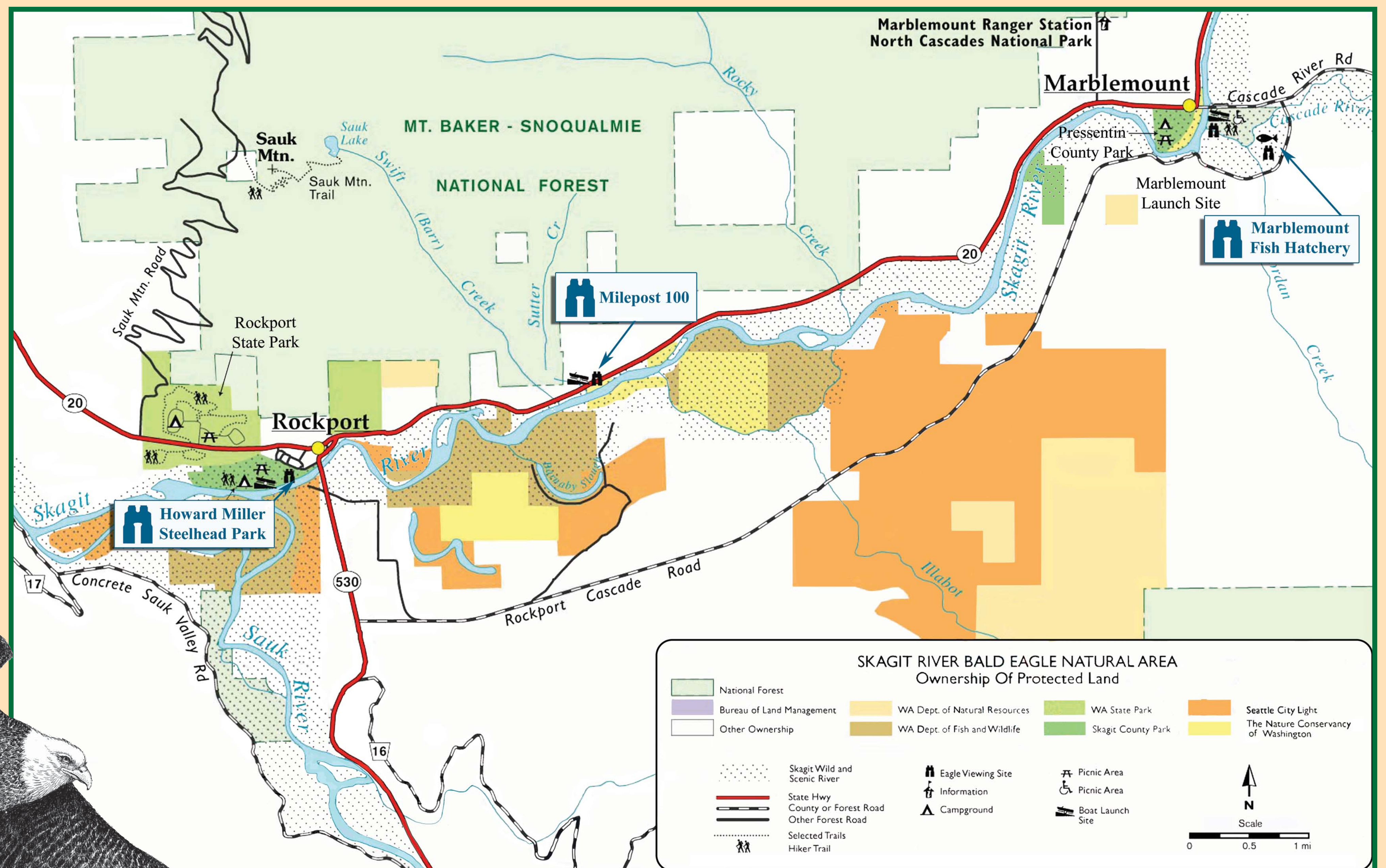
Wildlife Viewing Opportunities

You are standing in the heart of the Skagit Wild and Scenic River System. Near the confluence of three major rivers, prime eagle watching, abundant fisheries, and outstanding scenic beauty are the hallmarks of this remarkable landscape.

A dramatic event unfolds each year as spawning salmon return to the rivers followed by hundreds of hungry bald eagles. As the salmon's life cycle ends, their rotting carcasses are left behind as food for the eagles. Bald eagles are seen in the Upper Skagit, primarily from late December through early February. During this period there are a variety of opportunities to view eagles in their natural environment and to enjoy educational programs and activities.



The Skagit River Bald Eagle Natural Area, located near the community of Rockport, is dedicated to habitat protection, conservation and educational efforts.



This special area, founded in 1976 by the Nature Conservancy and Department of Fish and Wildlife, is one example of partners working to conserve natural resources along the Skagit River System.

Taking A Look Around

It is recommended that visitors use designated Eagle Watching sites which offer safe, accessible opportunities for viewing these magnificent birds. During the winter months sites are staffed on weekends by volunteers with spotting scopes and educational materials.

- Howard Miller Steelhead Park in Rockport**
- Milepost 100 on State Route 20**
- Marblemount Fish Hatchery**

- Eagles can normally be seen feeding on the river gravel bars during the morning hours, usually between 5 AM and 11 AM. Launching is recommended after 11 AM.
- Most of the river frontage is privately owned. Use public areas along the river and be courteous to local land owners. Do not beach on the shore or walk across private property.
- To see eagles up close, use a spotting scope, binoculars or telephoto lens. You are more likely to see wildlife if you have time to wait. Be patient and enjoy your outing.
- Try to keep noise low and movements slow. Eagles tend to spook where there is too much activity. Your car can be a great viewing blind!
- For your safety, park your car in pullouts well off the highway, and please use caution when crossing roadways.
- Never walk in the river or stream or conduct other activity that could disturb spawning salmon or their redds.
- Help keep this area clean for all to enjoy. Please do not litter.

SKAGIT WILD & SCENIC RIVER SYSTEM



Mt. Baker-Snoqualmie National Forest