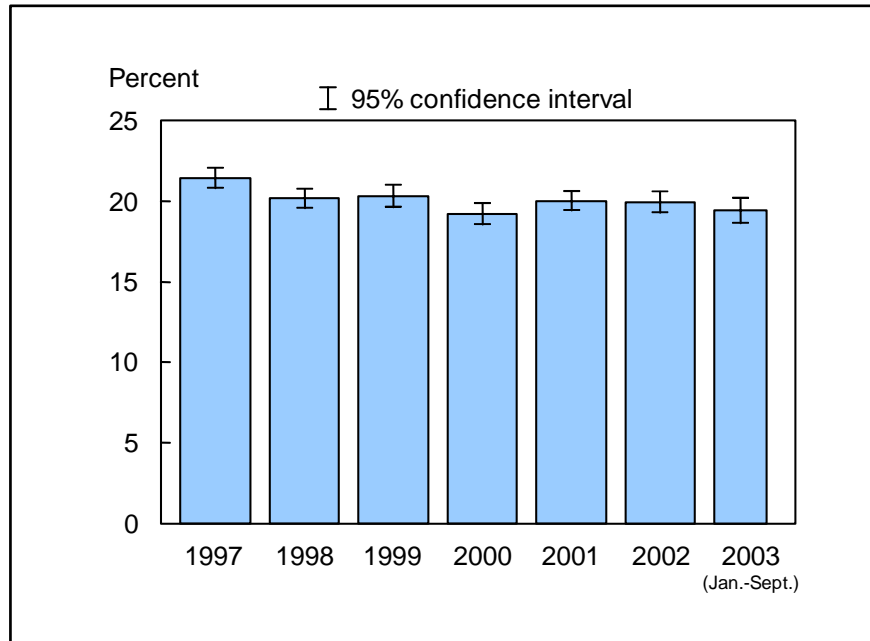


Figure 9.1. Percent of adults aged 18 years and over who had 5 or more drinks in 1 day at least once in the past year: United States, 1997-2003

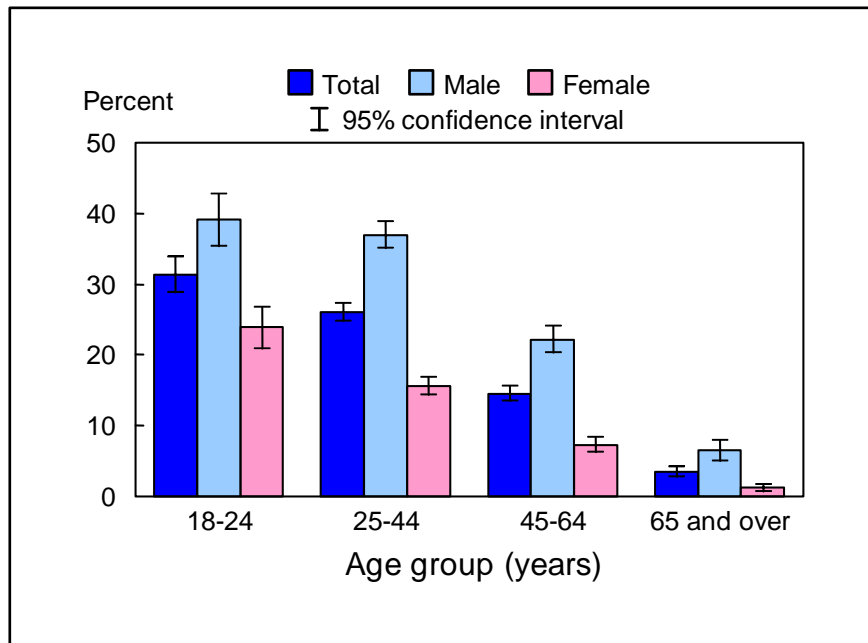


NOTES: The analyses excluded adults with unknown alcohol consumption (about 2% of respondents each year). CI is confidence interval. Beginning with the 2003 data, the National Health Interview Survey transitioned to weights derived from the 2000 census. In this Early Release, estimates for 2000-02 were recalculated using weights derived from the 2000 census. See "About This Release" and appendix tables in this release for more details.

DATA SOURCE: Sample Adult Core component of the 1997-2003 National Health Interview Surveys. The estimate for 2003 was based on data collected from January through September.

- From January through September 2003, the percent of adults who had five or more drinks in 1 day at least once in the past year was 19.4% (95% CI = 18.6%-20.2%).
- From 1997 through 2002, there was no significant trend in the annual estimates of adults who had five or more drinks in 1 day at least once in the past year.

Figure 9.2. Percent of adults aged 18 years and over who had 5 or more drinks in 1 day at least once in the past year, by age group and sex: United States, January-September 2003

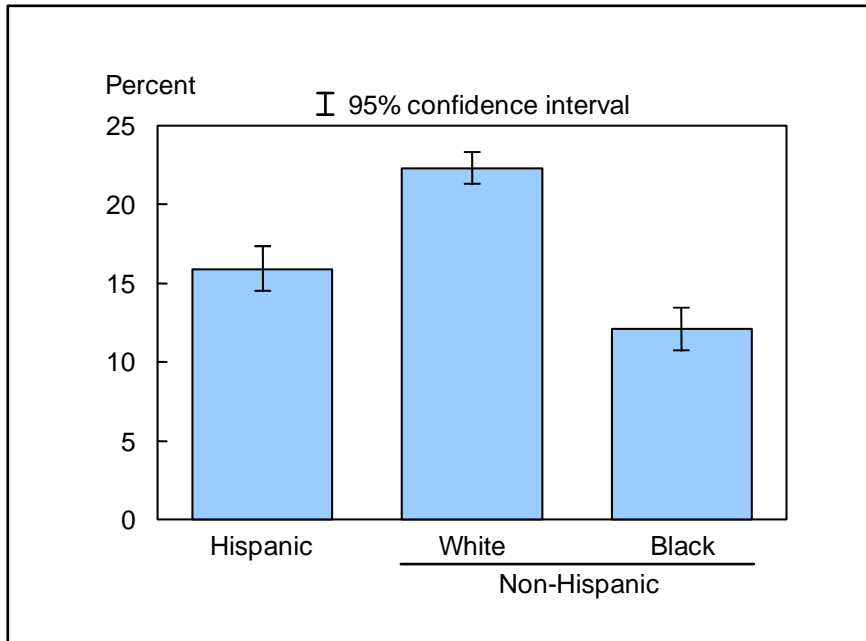


NOTE: The analyses excluded 679 adults (2.9%) with unknown alcohol consumption.

DATA SOURCE: Based on data collected from January through September in the Sample Adult Core component of the 2003 National Health Interview Survey.

- For both men and women, younger adults were more likely than older adults to have had five or more drinks in 1 day at least once in the past year.
- In all four age groups, men were more likely than women to have had five or more drinks in 1 day at least once in the past year.

Figure 9.3. Age-sex-adjusted percent of adults aged 18 years and over who had 5 or more drinks in 1 day at least once in the past year, by race/ethnicity: United States, January-September 2003



NOTES: The analyses excluded 679 adults (2.9%) with unknown alcohol consumption. Estimates are age-sex-adjusted to the year 2000 projected U.S. standard population using four age groups: 18-24 years, 25-44 years, 45-64 years, and 65 years and over.

DATA SOURCE: Based on data collected from January through September in the Sample Adult Core component of the 2003 National Health Interview Survey.

- The age-sex-adjusted percent of adults who had five or more drinks at least once in the past year was 15.9% for Hispanic adults, 22.3% for non-Hispanic white adults, and 12.1% for non-Hispanic black adults.
- Non-Hispanic white adults were most likely to have had five or more drinks in 1 day at least once in the past year, followed by Hispanic adults.

Data tables for figures 9.1-9.3:

Data table for figure 9.1. Percent of adults aged 18 years and over who had 5 or more drinks in 1 day at least once in the past year: United States, 1997-2003

Year	Percent	95% confidence interval
1997	21.4	20.8-22.0
1998	20.2	19.6-20.8
1999	20.3	19.6-21.0
2000	19.2	18.6-19.9
2001	20.0	19.4-20.6
2002	19.9	19.2-20.5
2003 (Jan.-Sept.)	19.4	18.6-20.2

Data table for figure 9.2. Percent of adults aged 18 years and over who had 5 or more drinks in 1 day at least once in the past year, by age group and sex: United States, January-September 2003

Age and sex	Percent	95% confidence interval
18-24 years		
Total	31.3	28.8-33.8
Men	39.1	35.4-42.7
Women	23.9	20.9-26.8
25-44 years		
Total	26.0	24.8-27.3
Men	36.9	35.1-38.8
Women	15.6	14.3-16.9
45-64 years		
Total	14.5	13.5-15.6
Men	22.2	20.4-24.1
Women	7.3	6.3-8.3
65 years and over		
Total	3.5	2.8-4.2
Men	6.5	5.0-8.0
Women	1.3	0.8-1.8

Data table for figure 9.3. Age-sex-adjusted percent of adults aged 18 years and over who had 5 or more drinks in 1 day at least once in the past year, by race/ethnicity: United States, January-September 2003

Race/ethnicity	Percent ¹	95% confidence interval
Hispanic or Latino	15.9	14.5-17.3
Not Hispanic or Latino		
White, single race	22.3	21.3-23.3
Black, single race	12.1	10.7-13.4

¹Estimates are age-sex-adjusted to the year 2000 projected U.S. standard population using four age groups: 18-24 years, 25-44 years, 45-64 years, and 65 years and over.