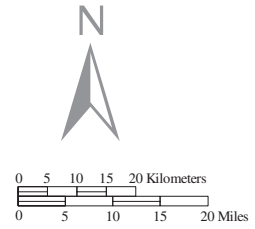
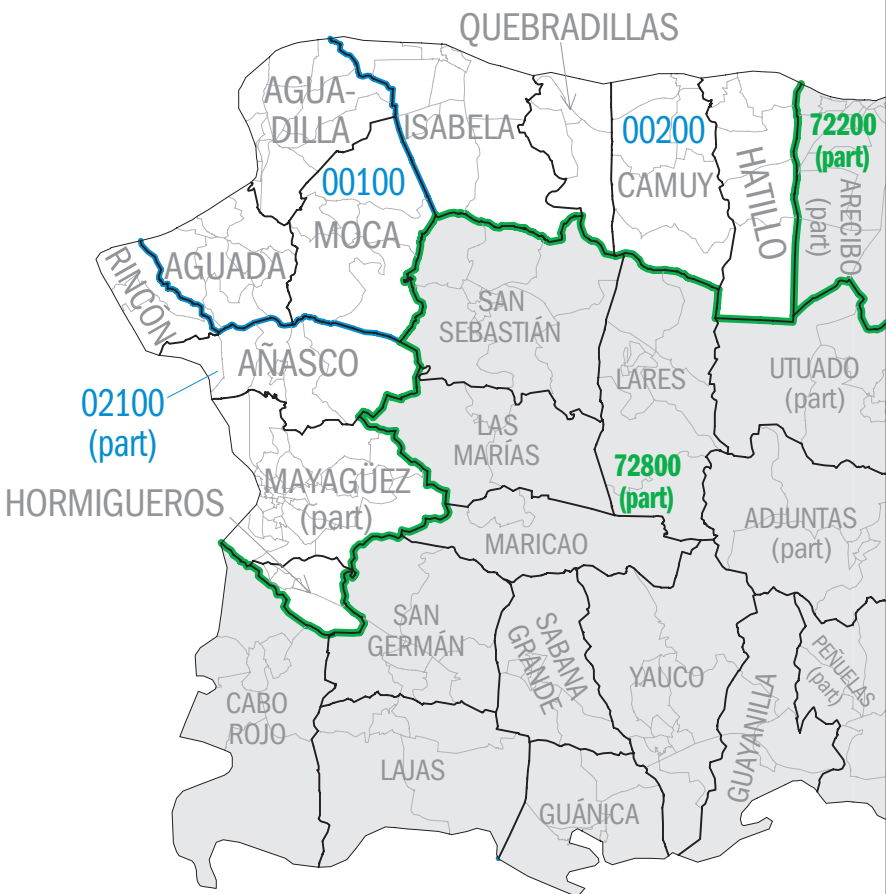


72102 Super-Public Use Microdata Area (Super-PUMA)
LARES Municipio
Shoreline



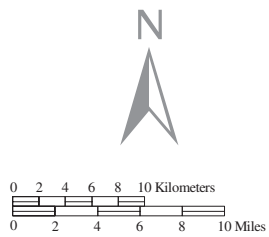


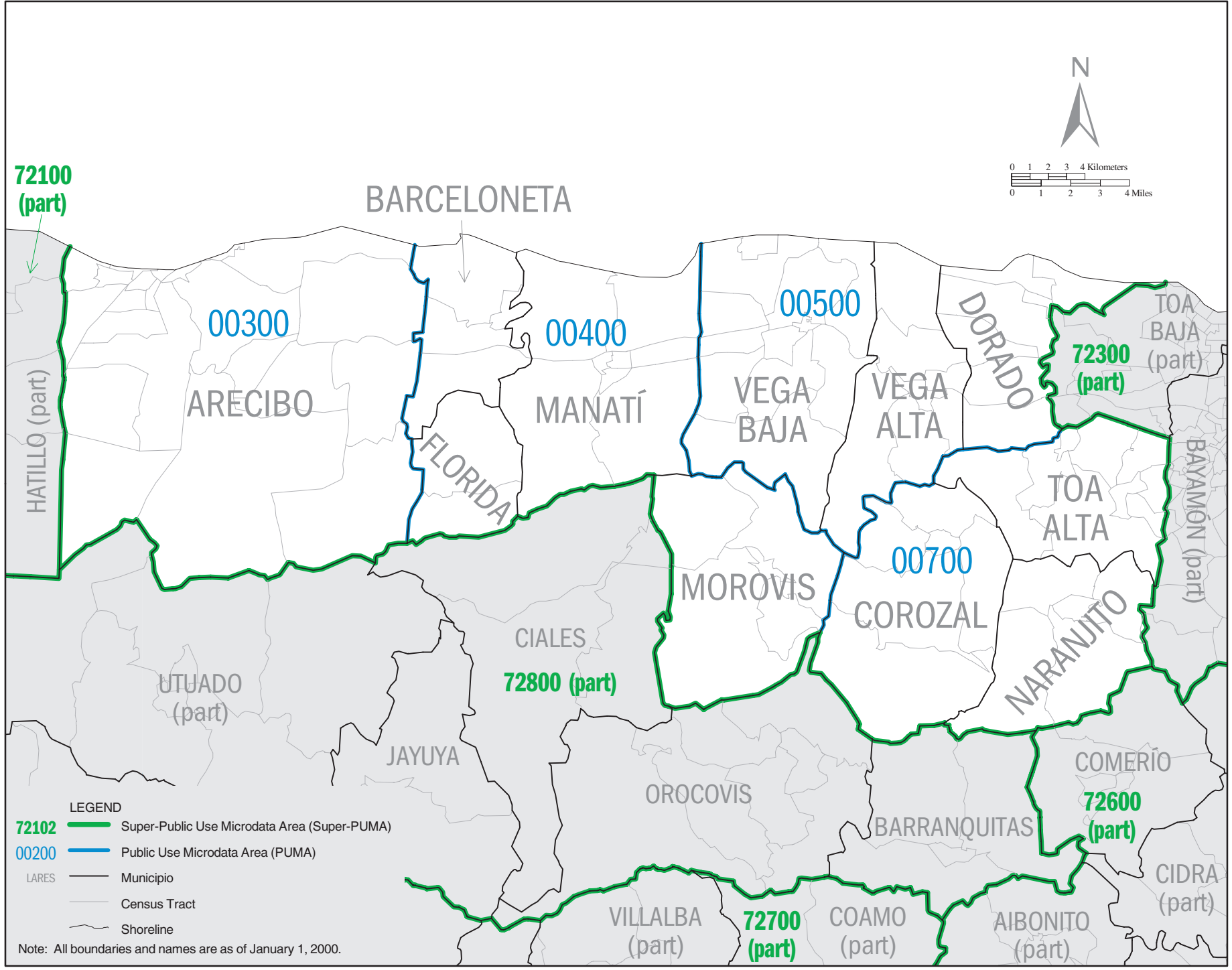
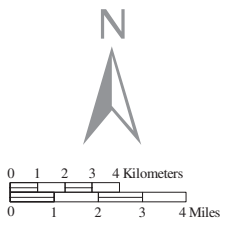
MAYAGÜEZ
 (part)
 02100
 (part)

MAYAGÜEZ
 (part)
 02100
 (part)

- LEGEND**
- 72102** Super-Public Use Microdata Area (Super-PUMA)
 - 00200** Public Use Microdata Area (PUMA)
 - LARES Municipio
 - Census Tract
 - Shoreline

Note: All boundaries and names are as of January 1, 2000.





72100 (part)

HATILLO (part)

00300

ARECIBO

BARCELONETA

FLORIDA

00400

MANATÍ

00500

VEGA BAJA

VEGA ALTA

DORADO

72300 (part)

TOA BAJA (part)

BAYAMÓN (part)

TOA ALTA

MOROVIS

00700

COROZAL

NARANJITO

CIALES

72800 (part)

UTUADO (part)

JAYUYA

OROCOVIS

BARRANQUITAS

COMERIO

72600 (part)

CIDRA (part)

VILLALBA (part)

72700 (part)

COAMO (part)

AIBONITO (part)

LEGEND

72102 Super-Public Use Microdata Area (Super-PUMA)

00200 Public Use Microdata Area (PUMA)

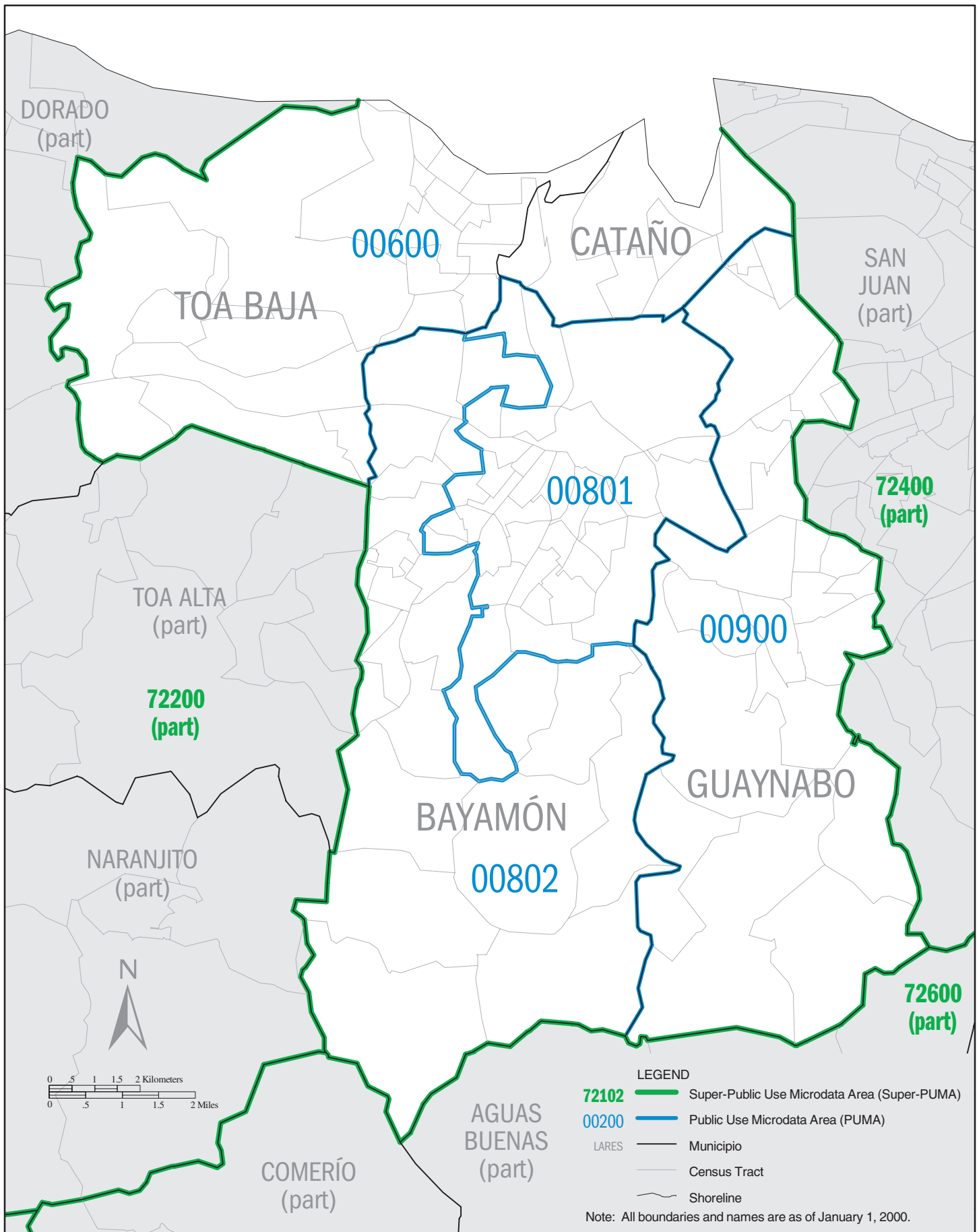
LARES Municipio

Census Tract

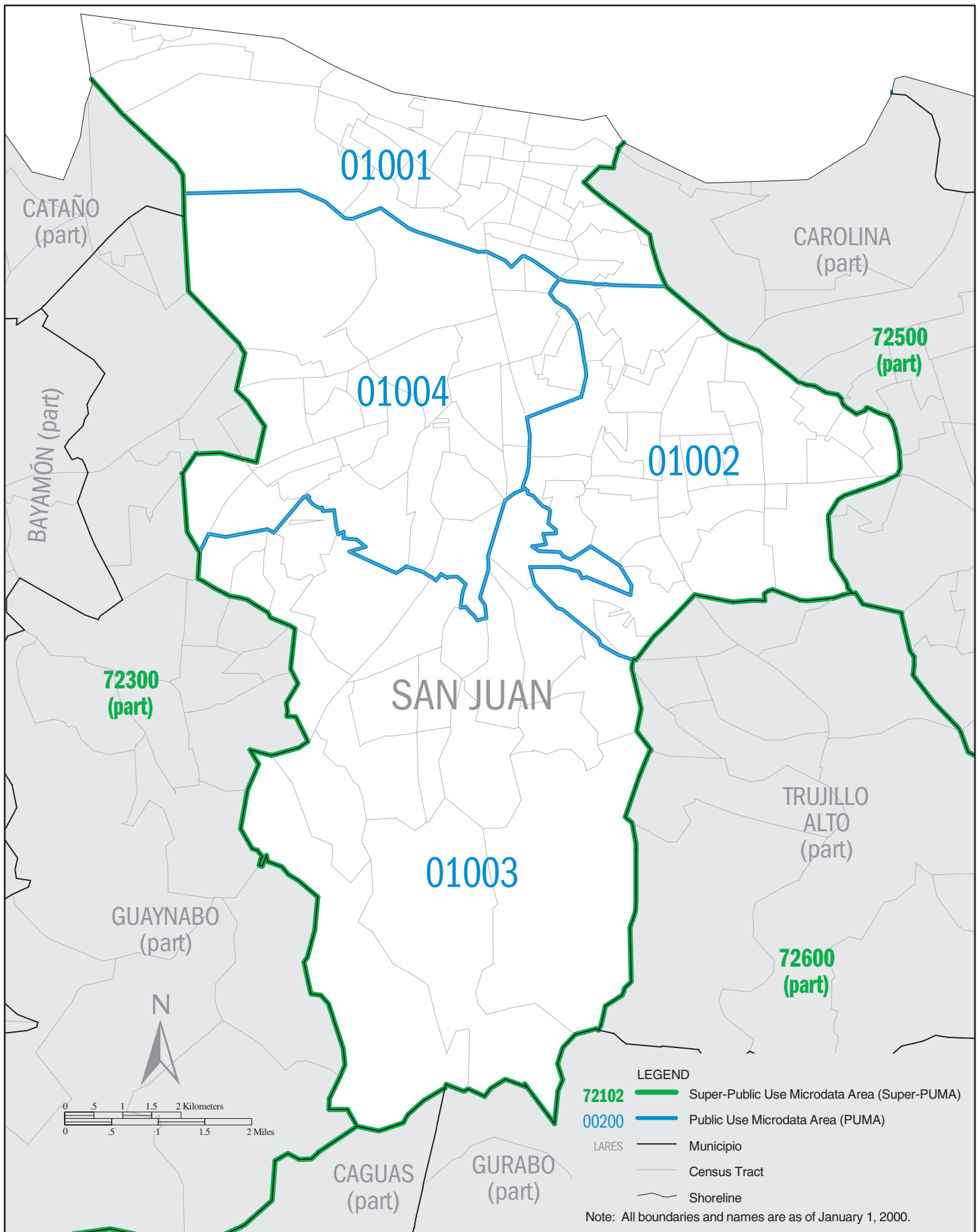
Shoreline

Note: All boundaries and names are as of January 1, 2000.

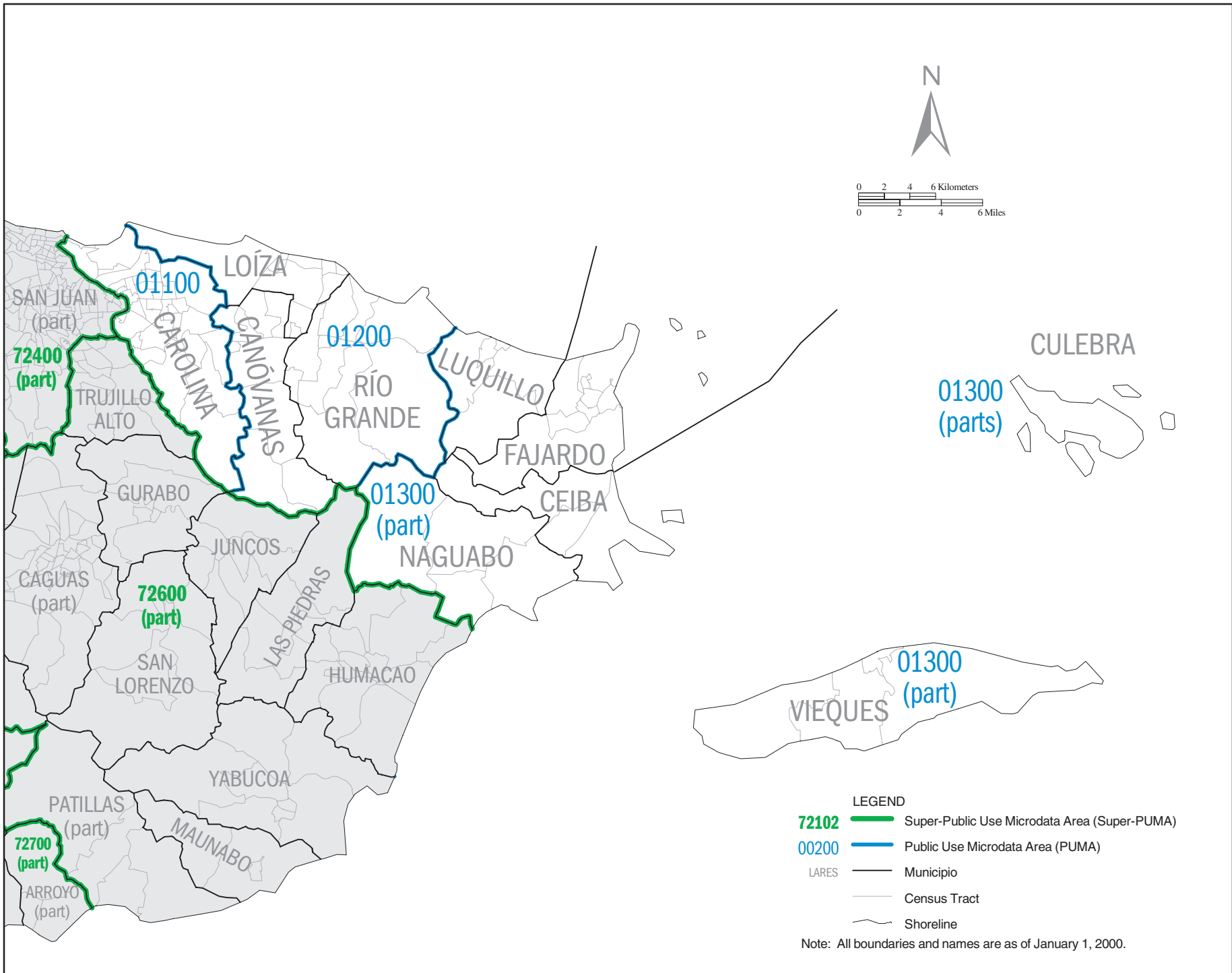
PUERTO RICO Super-PUMA 72300: Census 2000 Public Use Microdata Areas (PUMAs)



PUERTO RICO Super-PUMA 72400: Census 2000 Public Use Microdata Areas (PUMAs)



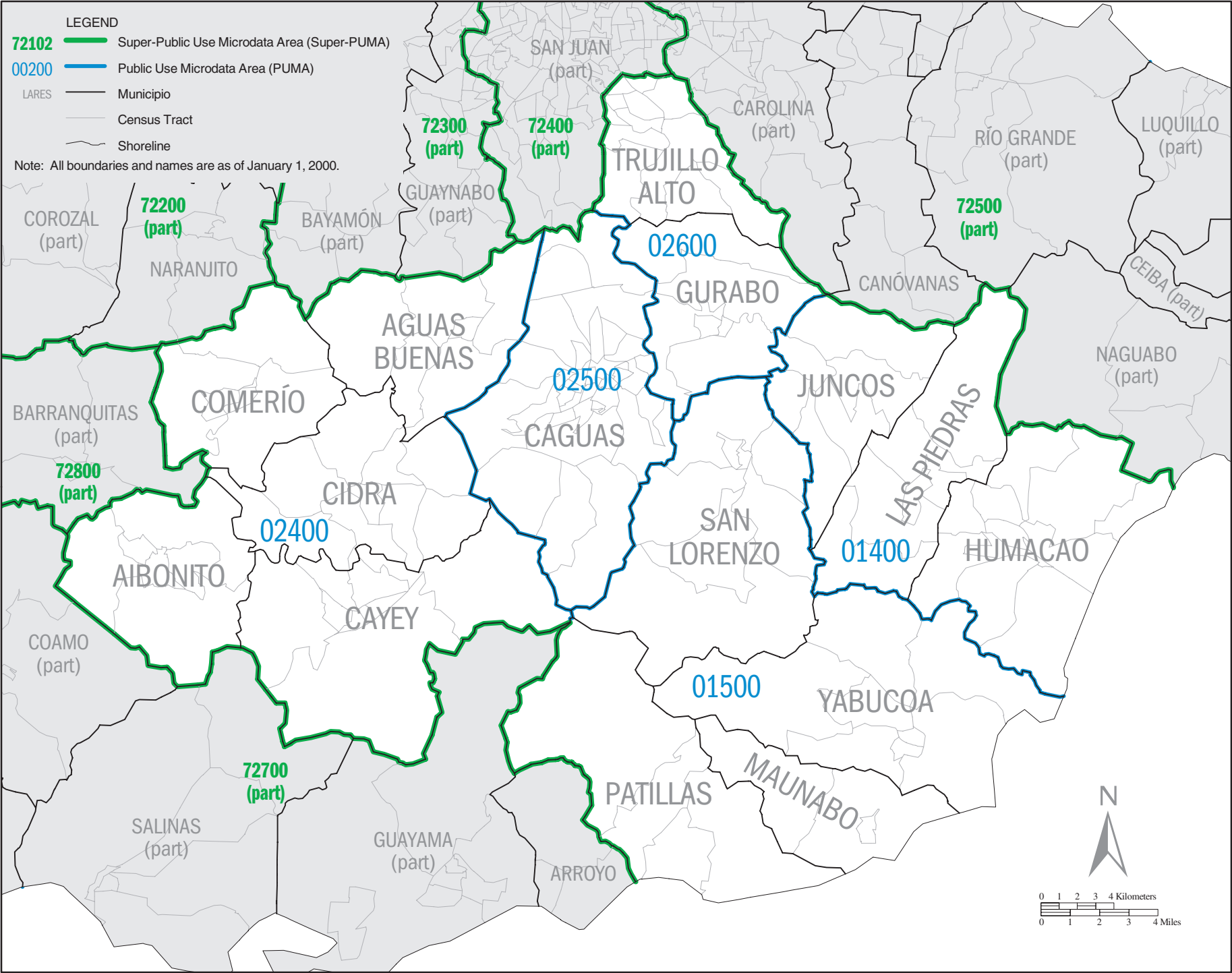
LEGEND
72102 Super-Public Use Microdata Area (Super-PUMA)
00200 Public Use Microdata Area (PUMA)
 LARES Municipio
 Census Tract
 Shoreline
 Note: All boundaries and names are as of January 1, 2000.

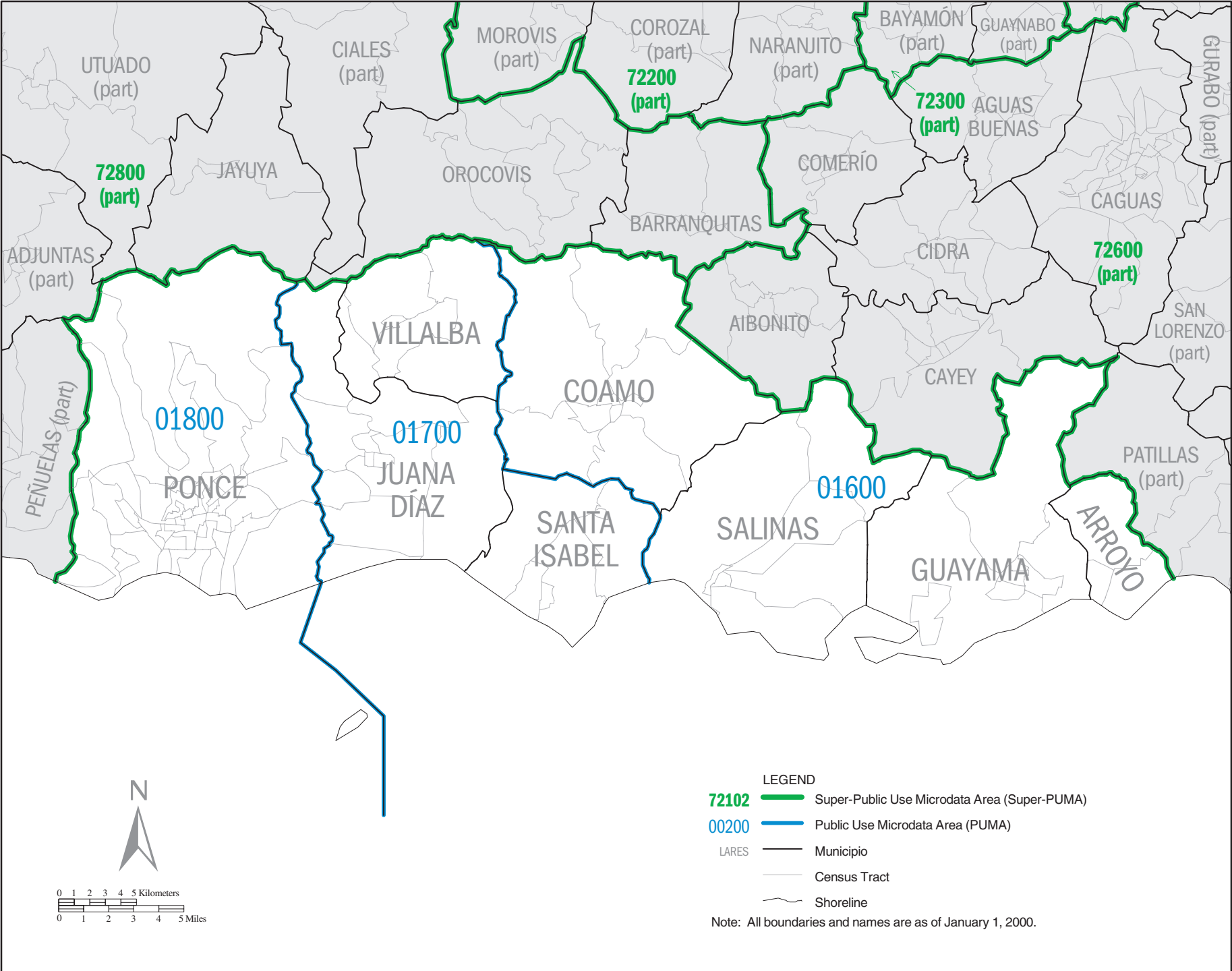


LEGEND

- 72102** Super-Public Use Microdata Area (Super-PUMA)
- 00200** Public Use Microdata Area (PUMA)
- LARES — Municipio
- Census Tract
- Shoreline

Note: All boundaries and names are as of January 1, 2000.





LEGEND

- 72102** Super-Public Use Microdata Area (Super-PUMA)
- 00200** Public Use Microdata Area (PUMA)
- LARES — Municipio
- Census Tract
- Shoreline

Note: All boundaries and names are as of January 1, 2000.

