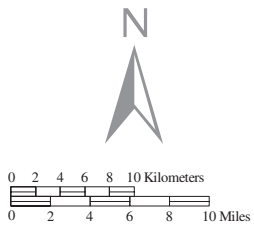
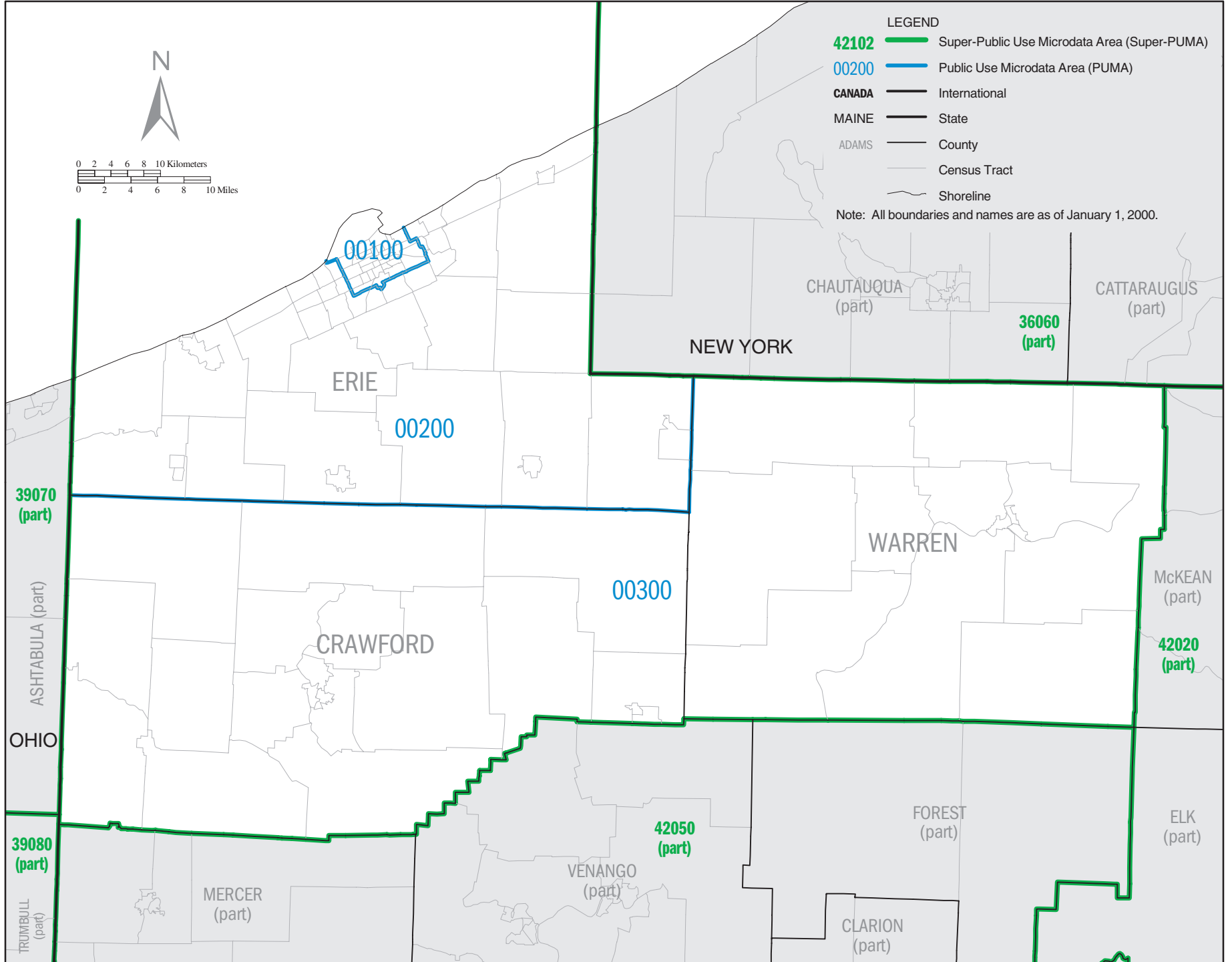
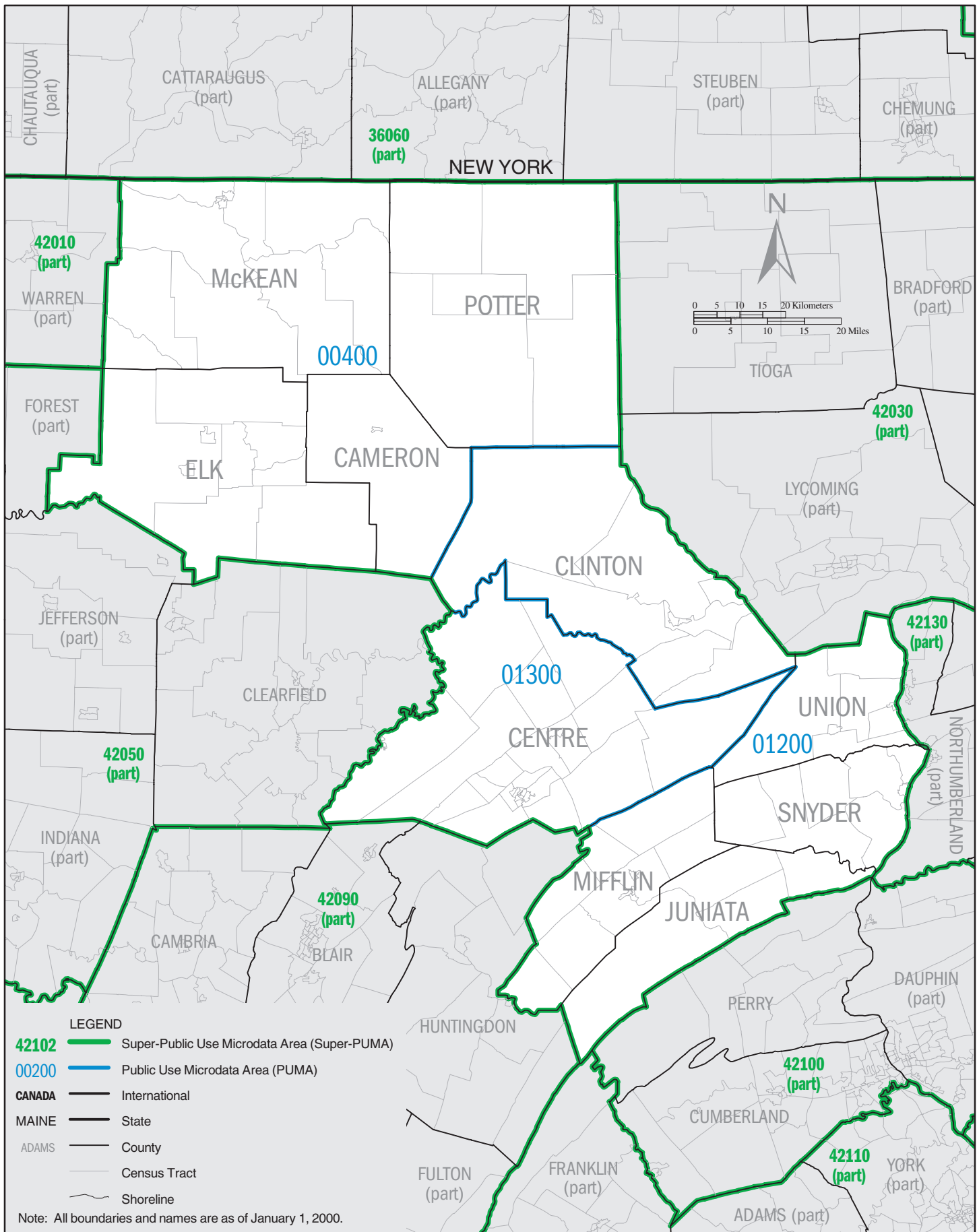


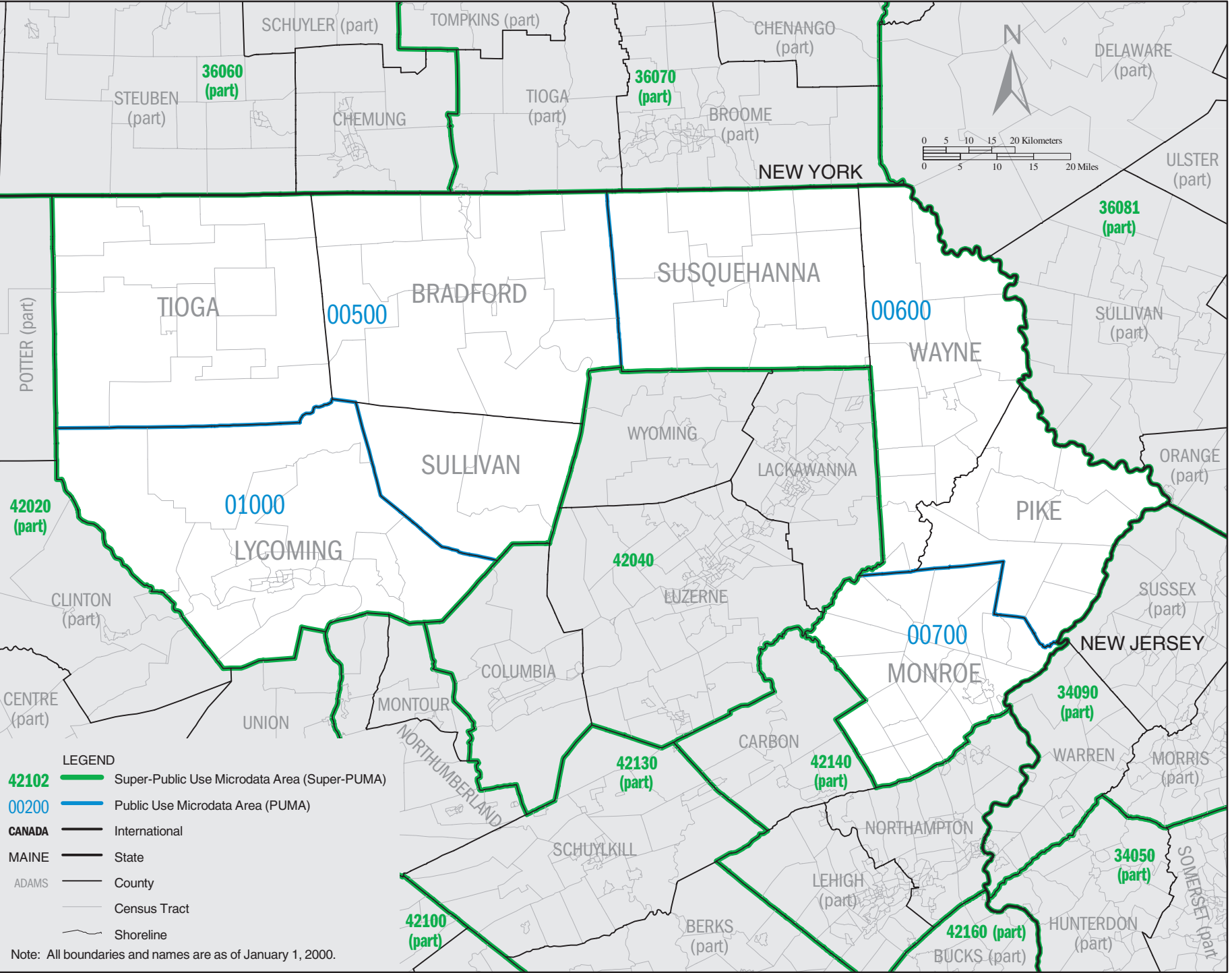
LEGEND

- 42102** Super-Public Use Microdata Area (Super-PUMA)
- State
- County
- Shoreline



PENNSYLVANIA Super-PUMA 42020: Census 2000 Public Use Microdata Areas (PUMAs)

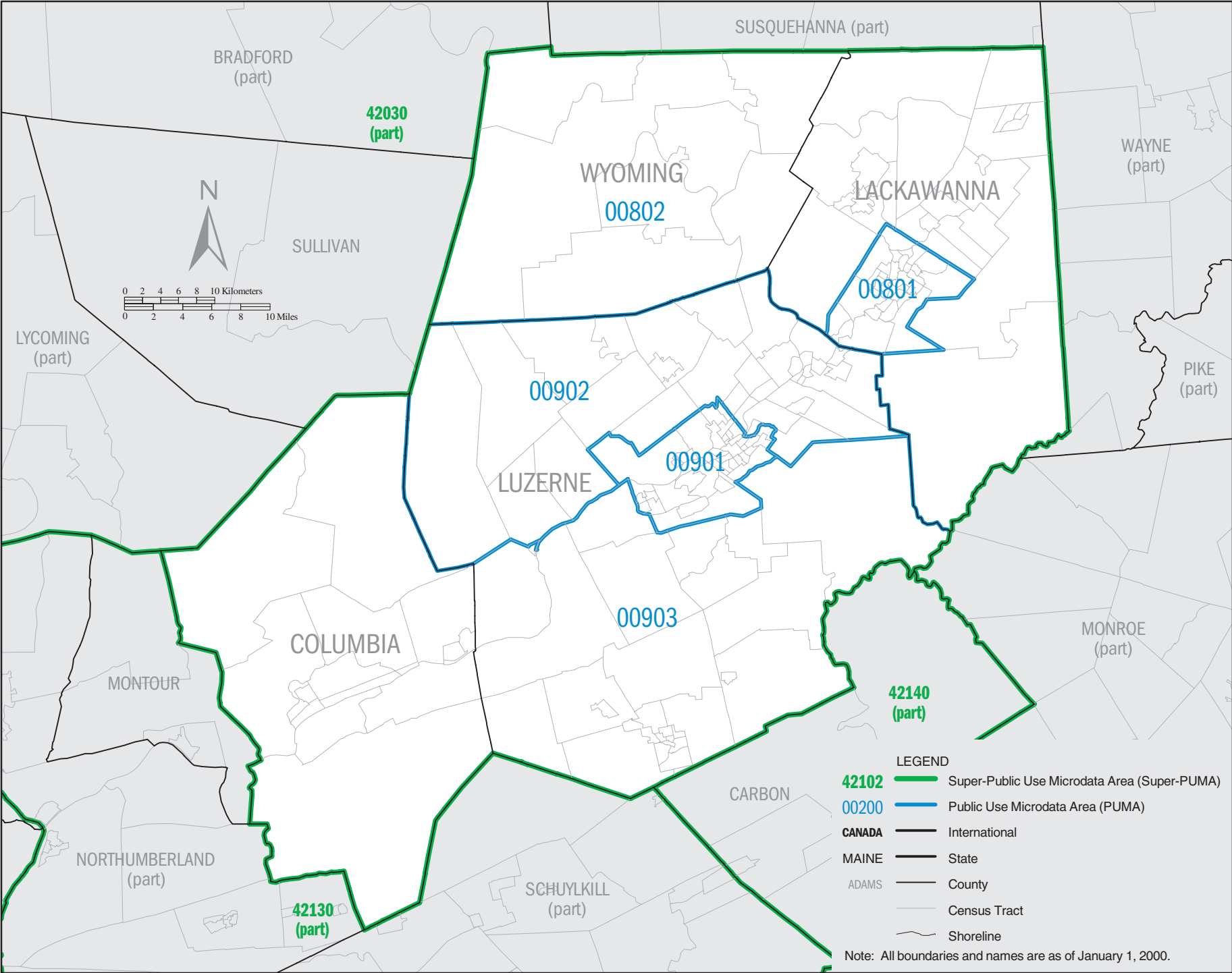


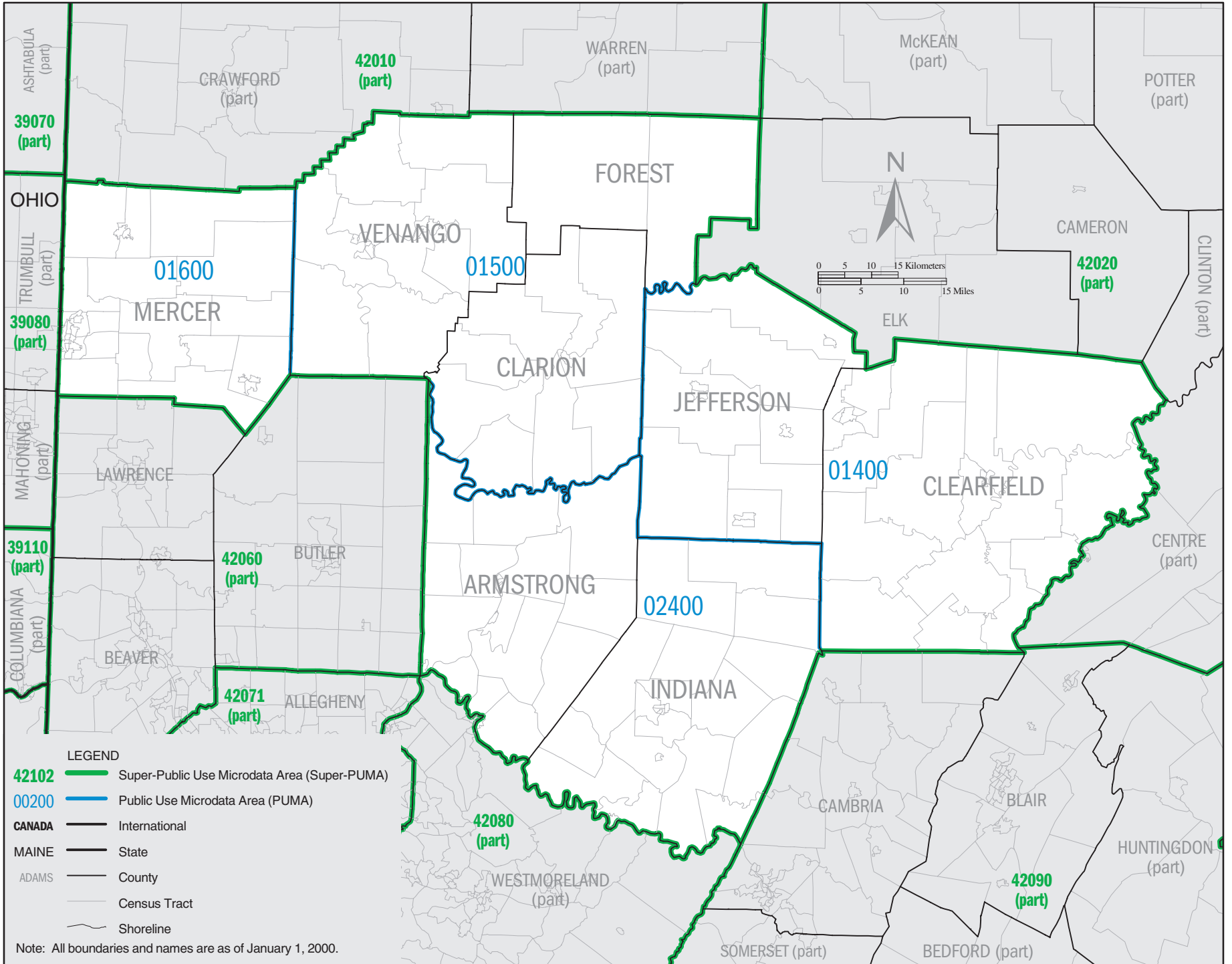


LEGEND

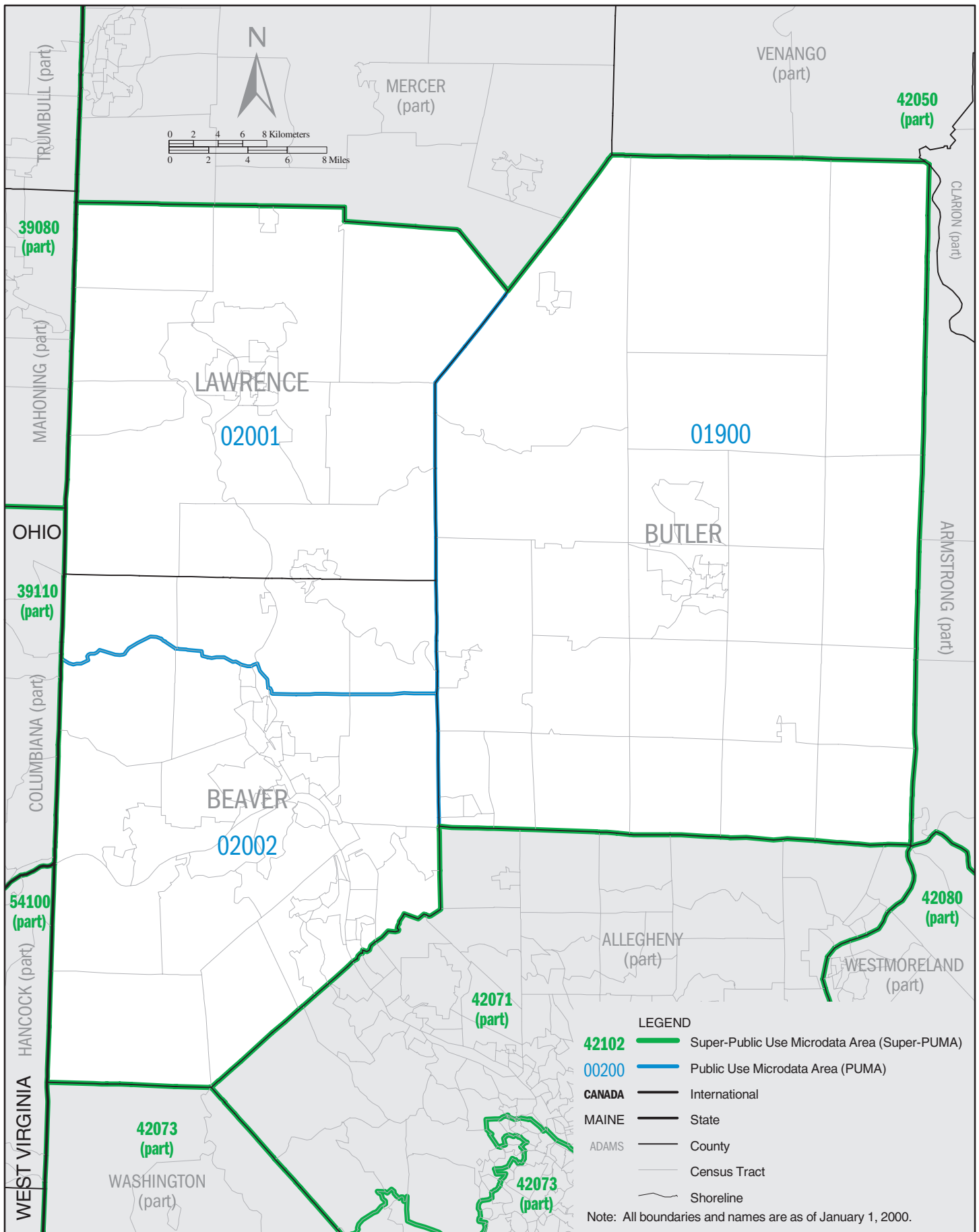
- Super-Public Use Microdata Area (Super-PUMA)
- Public Use Microdata Area (PUMA)
- CANADA** — International
- MAINE** — State
- ADAMS** — County
- Census Tract
- Shoreline

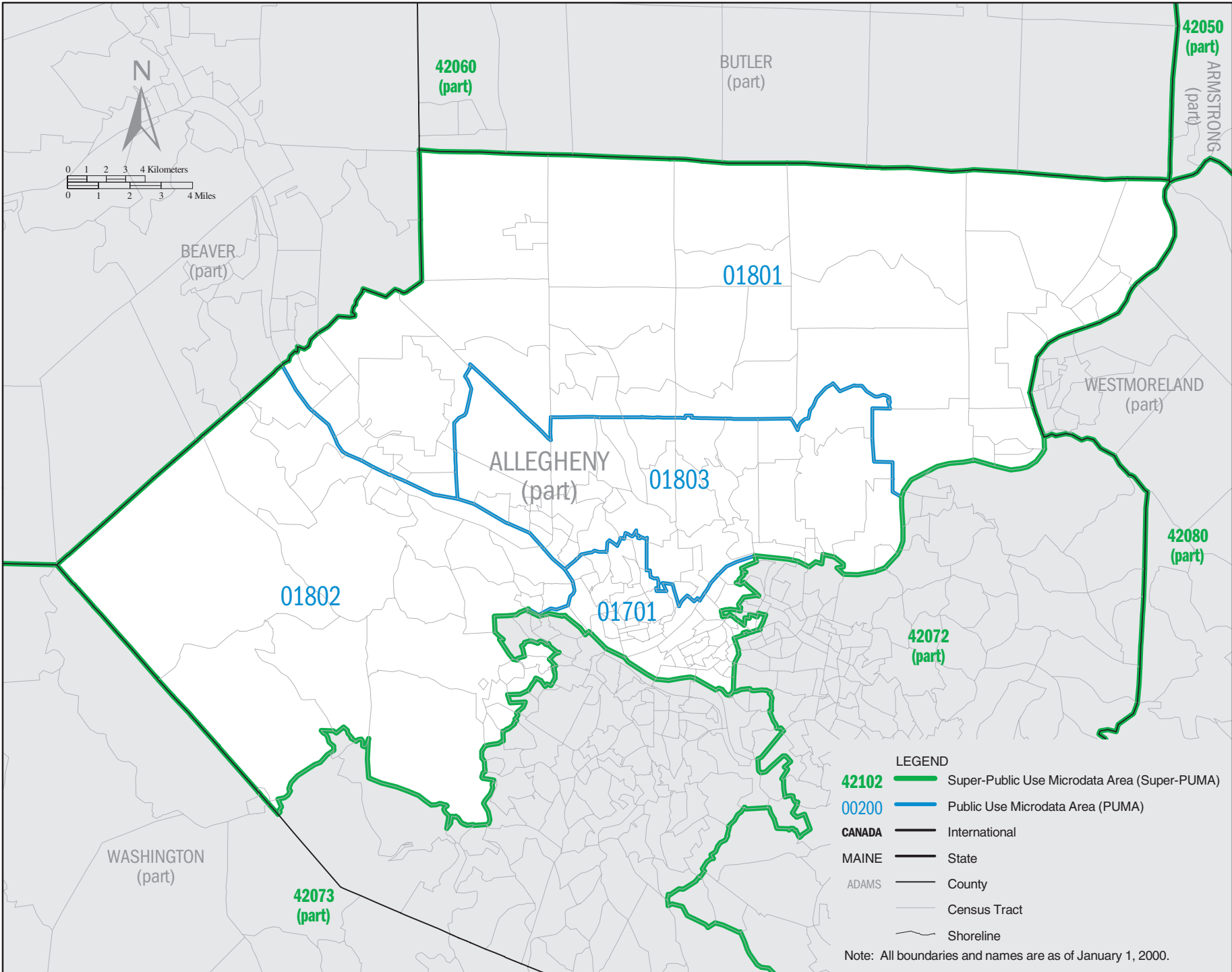
Note: All boundaries and names are as of January 1, 2000.



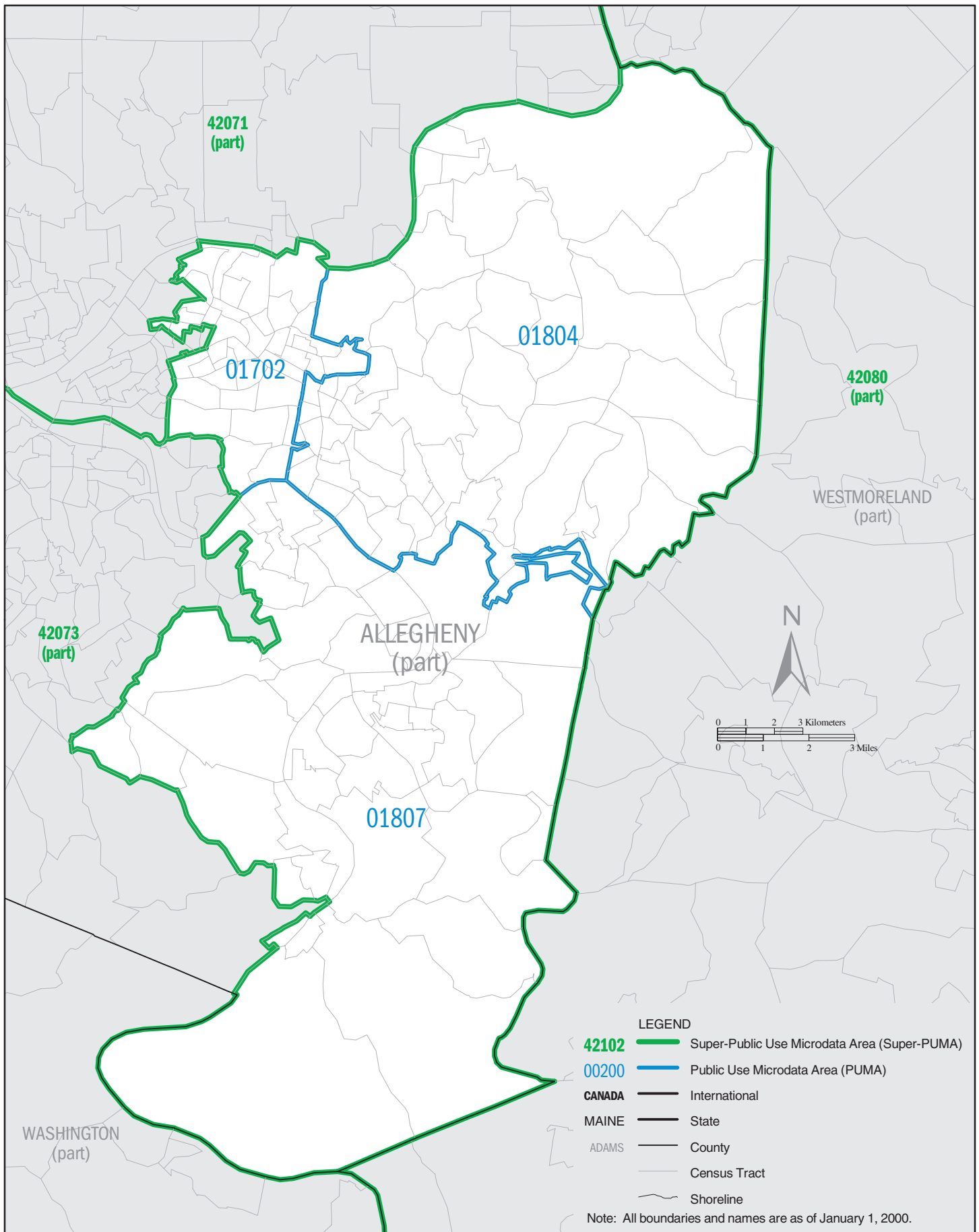


PENNSYLVANIA Super-PUMA 42060: Census 2000 Public Use Microdata Areas (PUMAs)

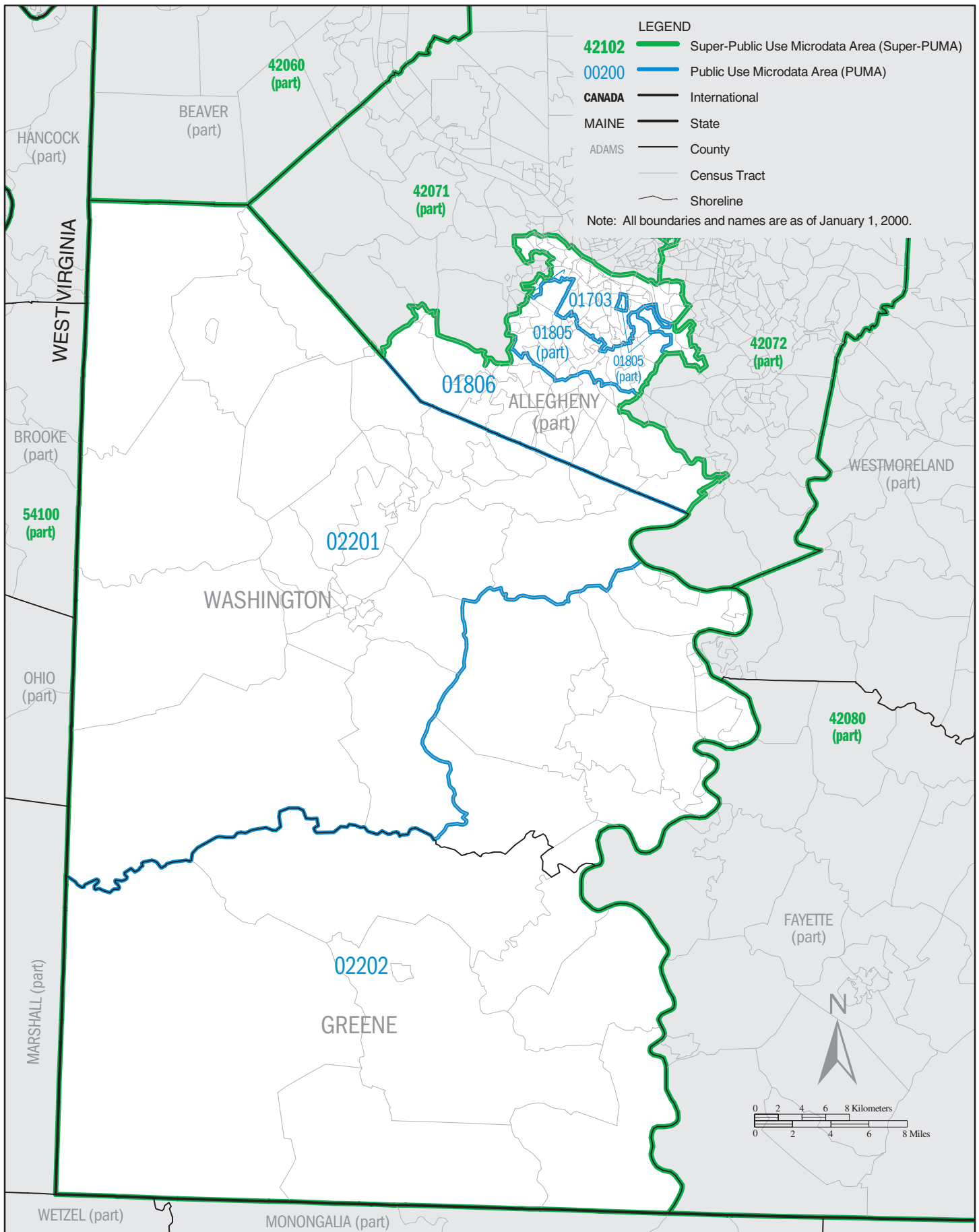




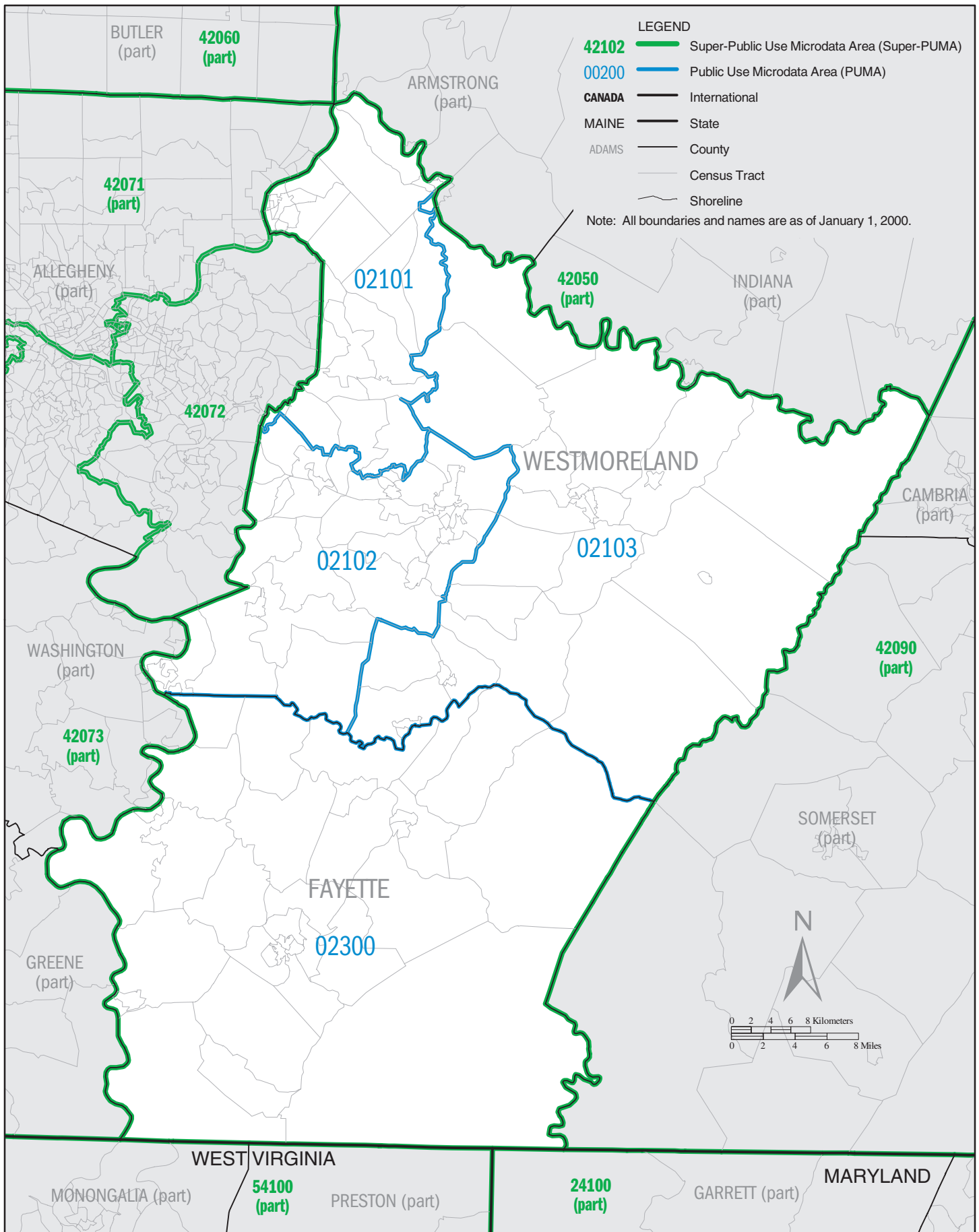
PENNSYLVANIA Super-PUMA 42072: Census 2000 Public Use Microdata Areas (PUMAs)

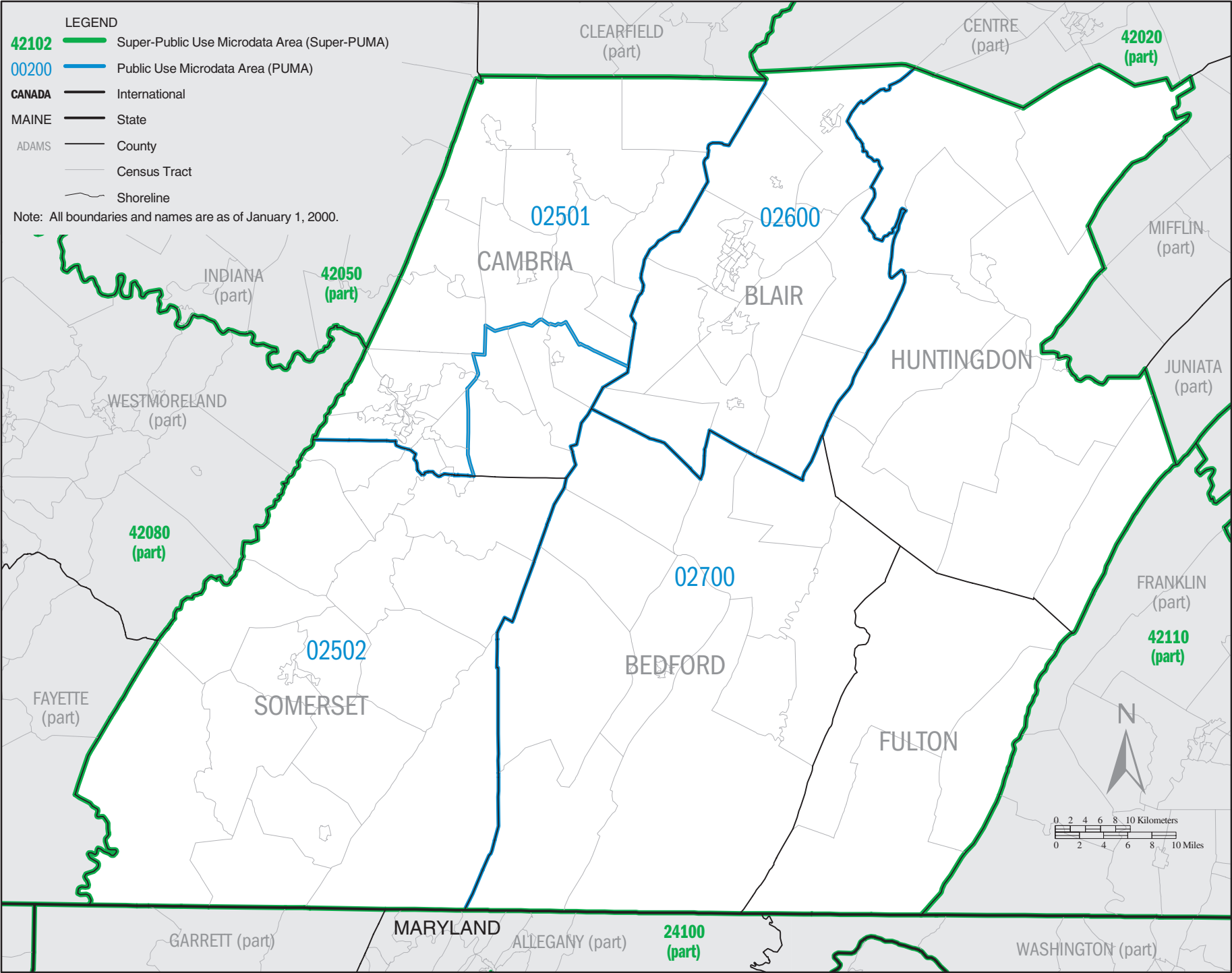


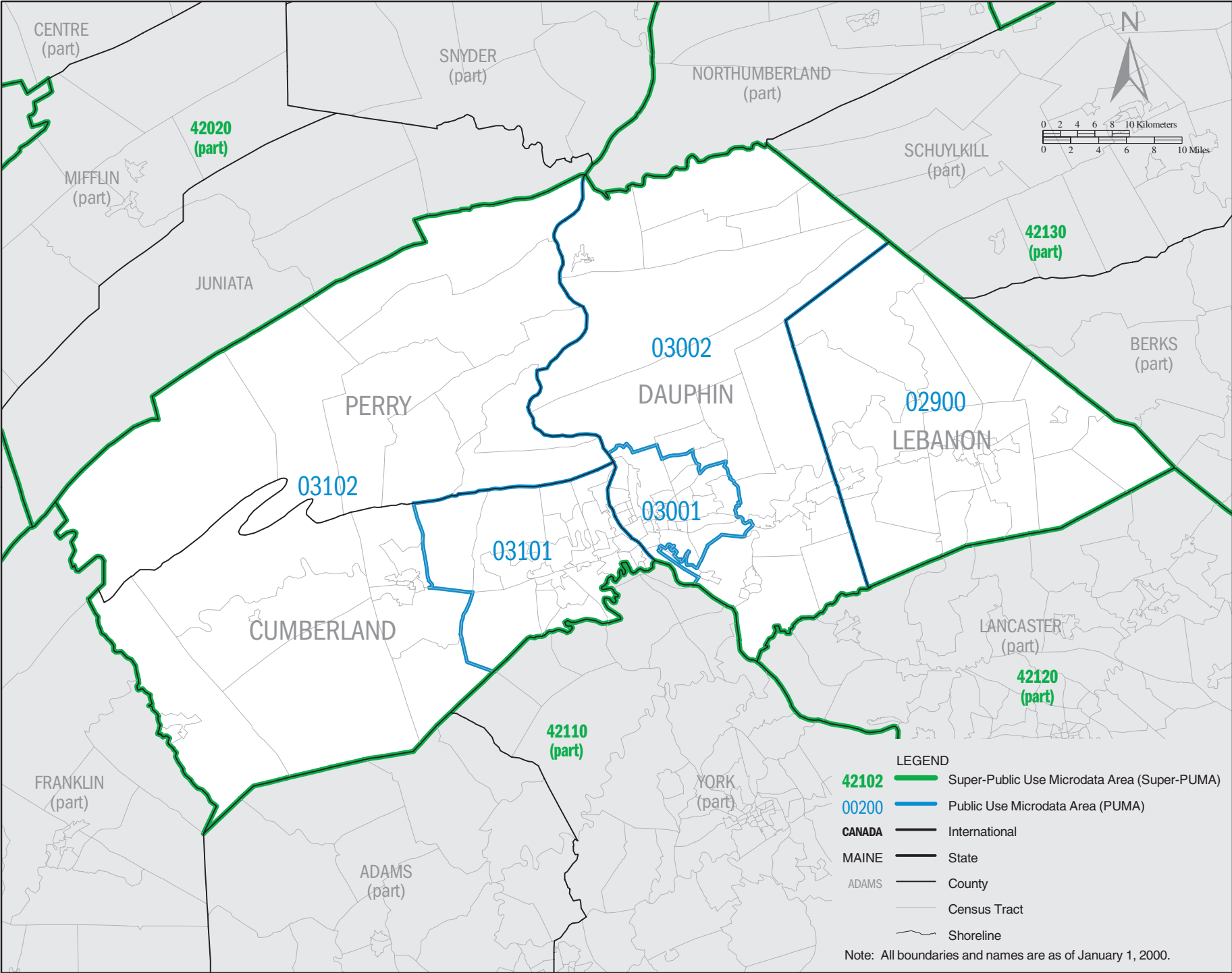
PENNSYLVANIA Super-PUMA 42073: Census 2000 Public Use Microdata Areas (PUMAs)

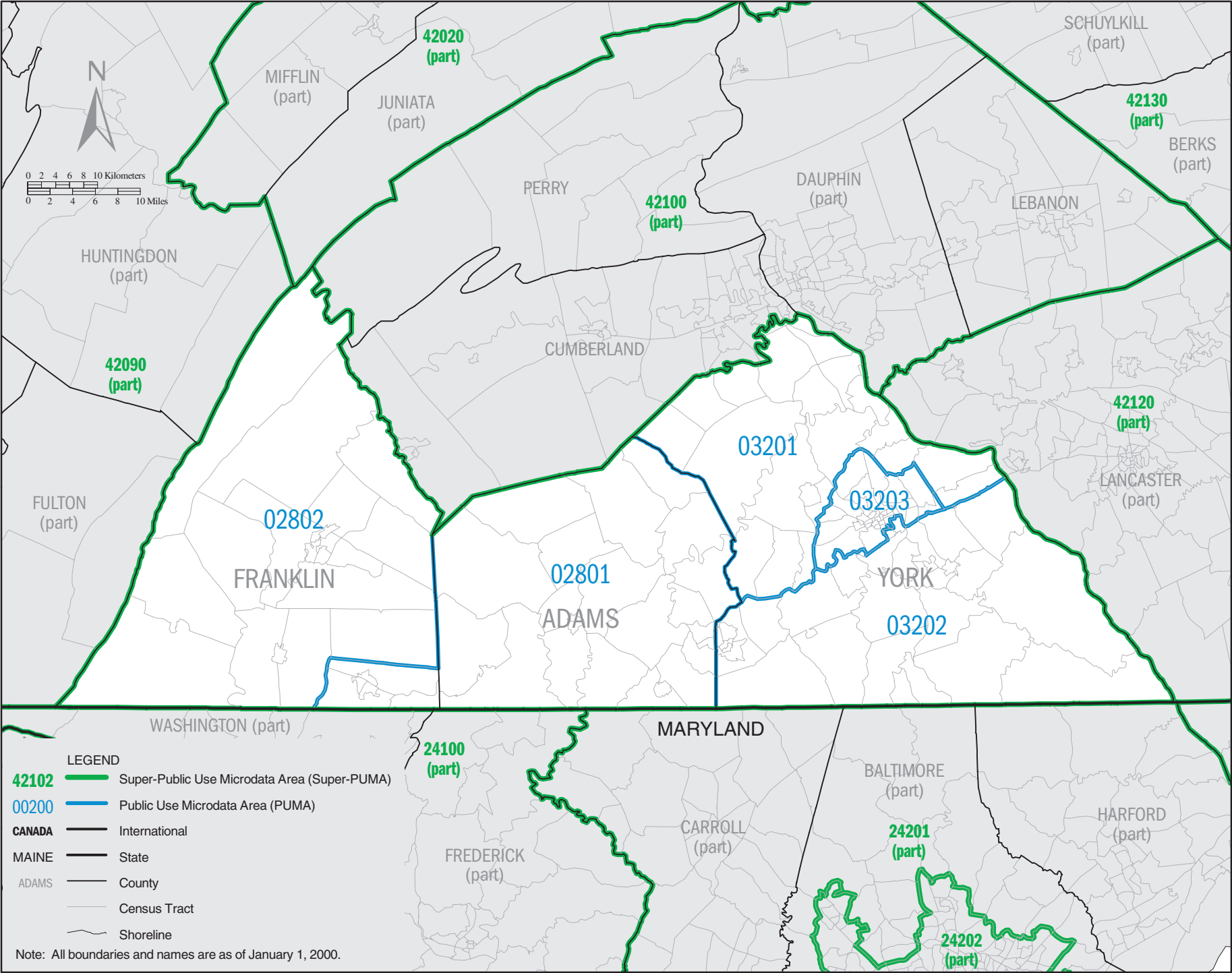


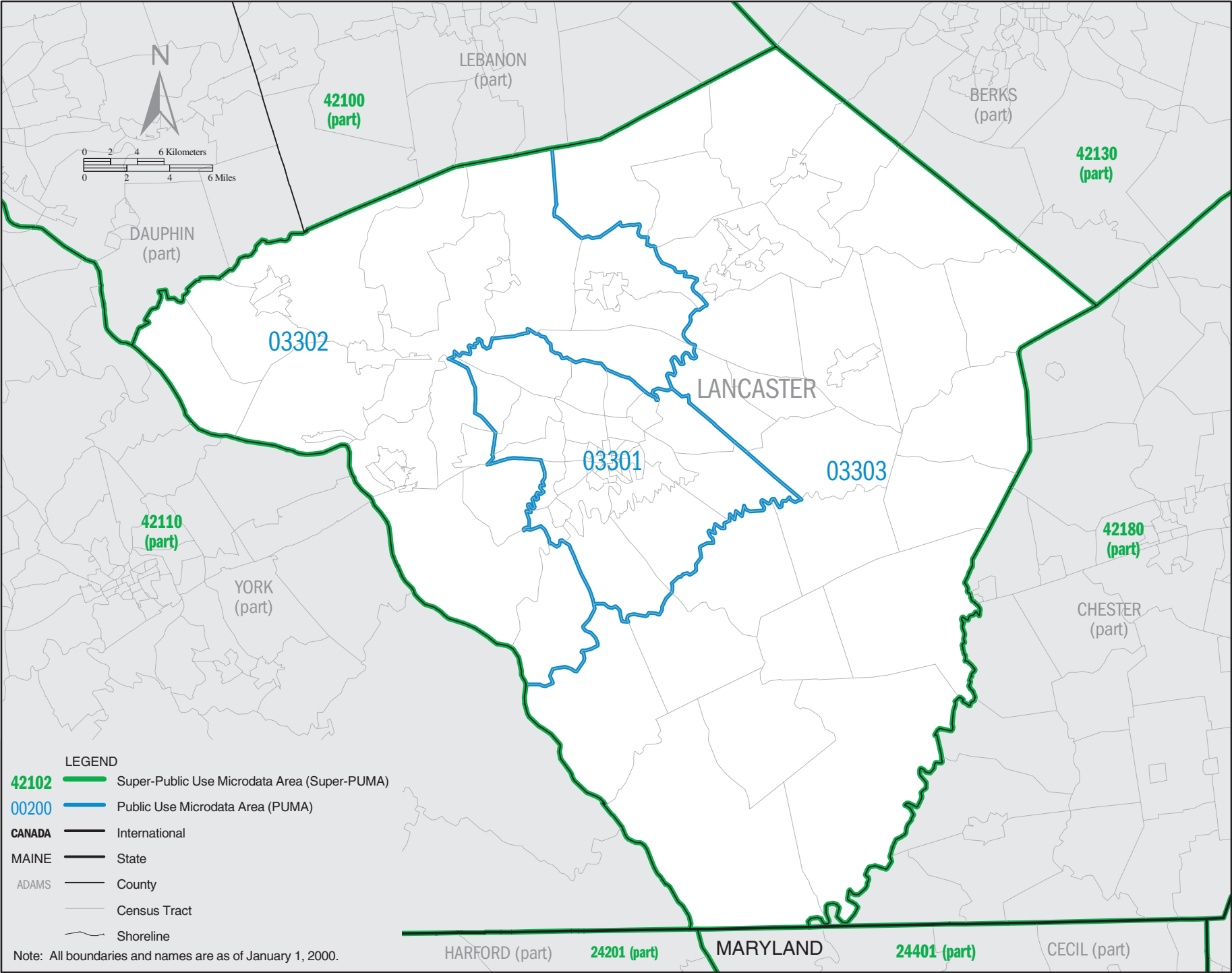
PENNSYLVANIA Super-PUMA 42080: Census 2000 Public Use Microdata Areas (PUMAs)

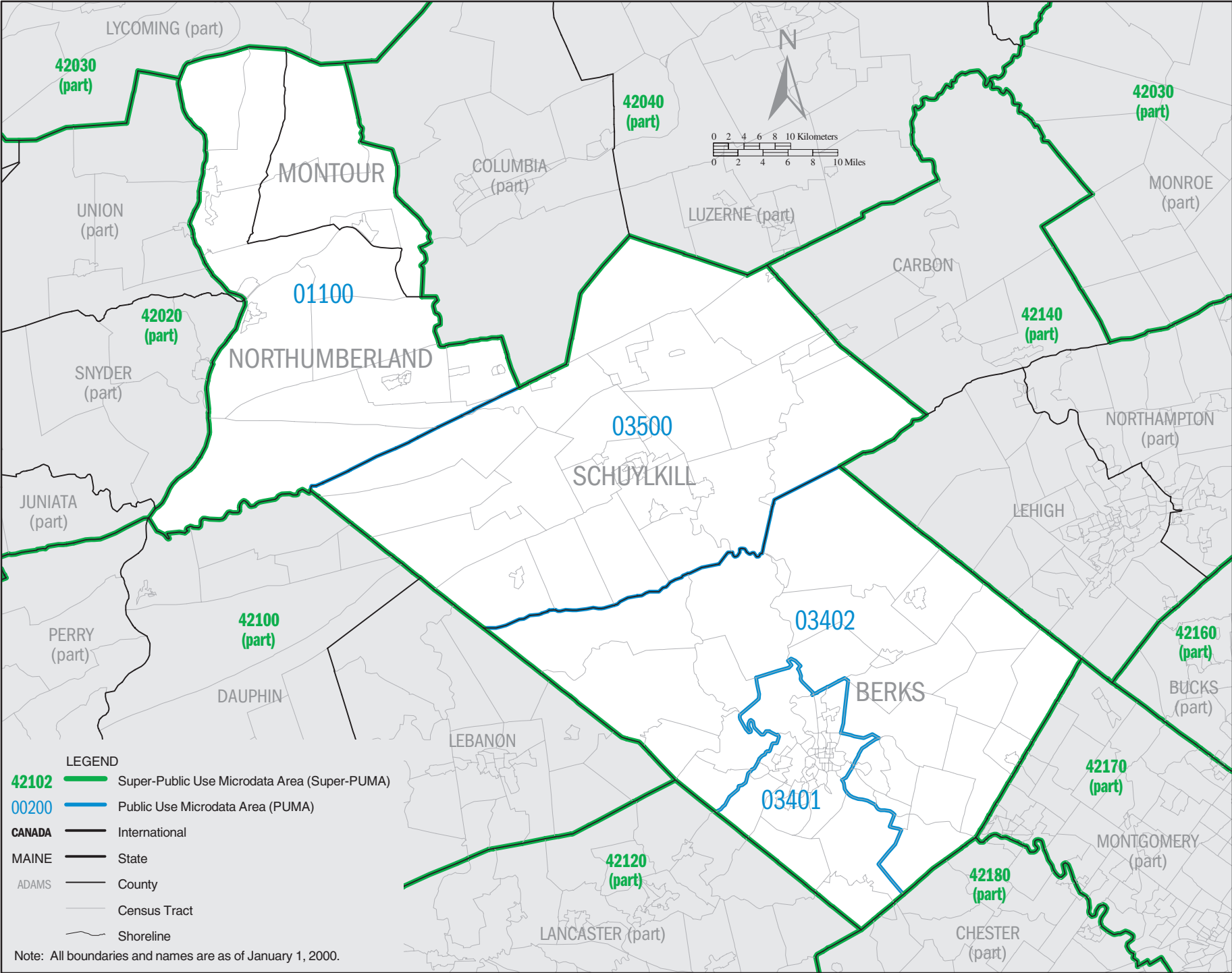








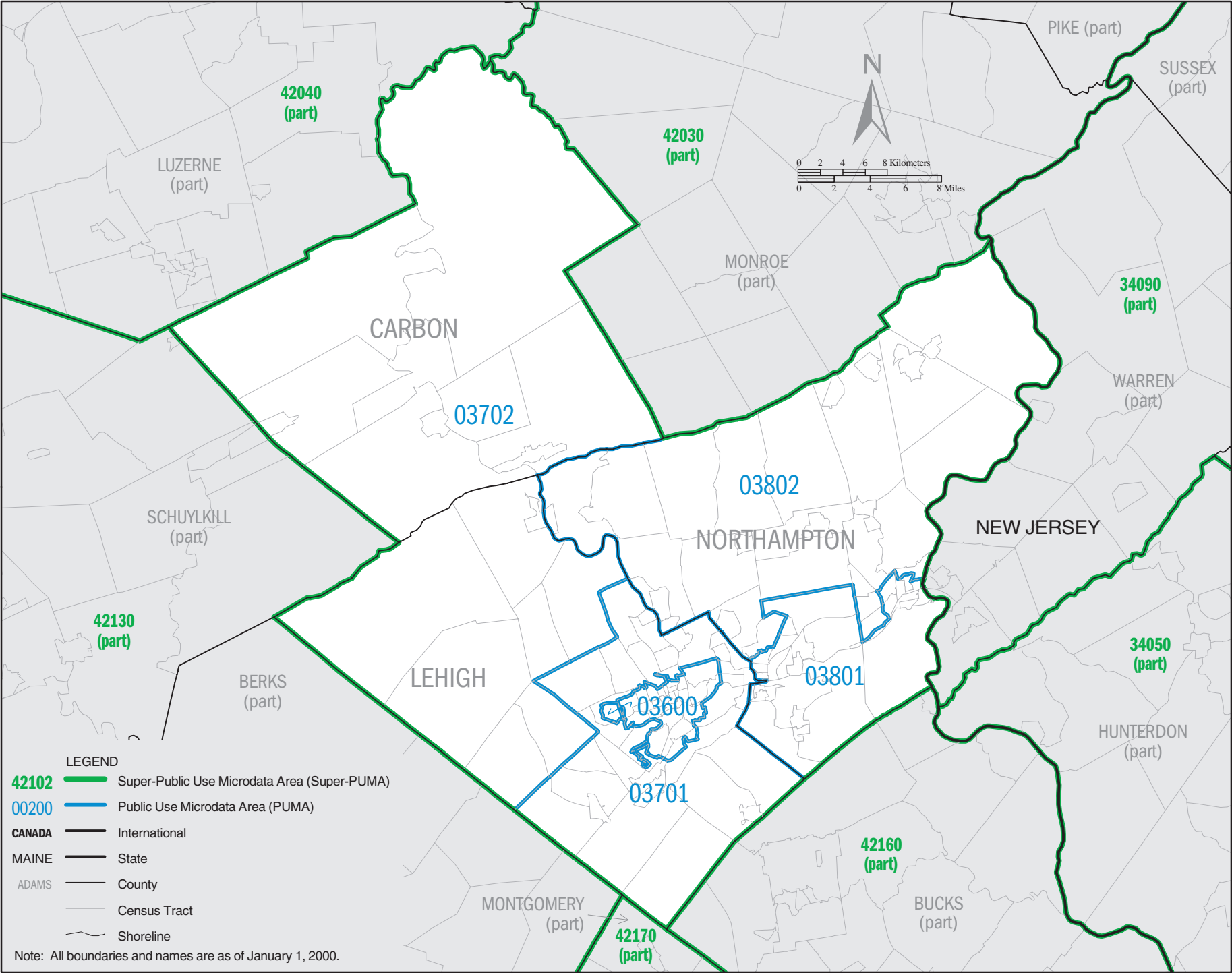


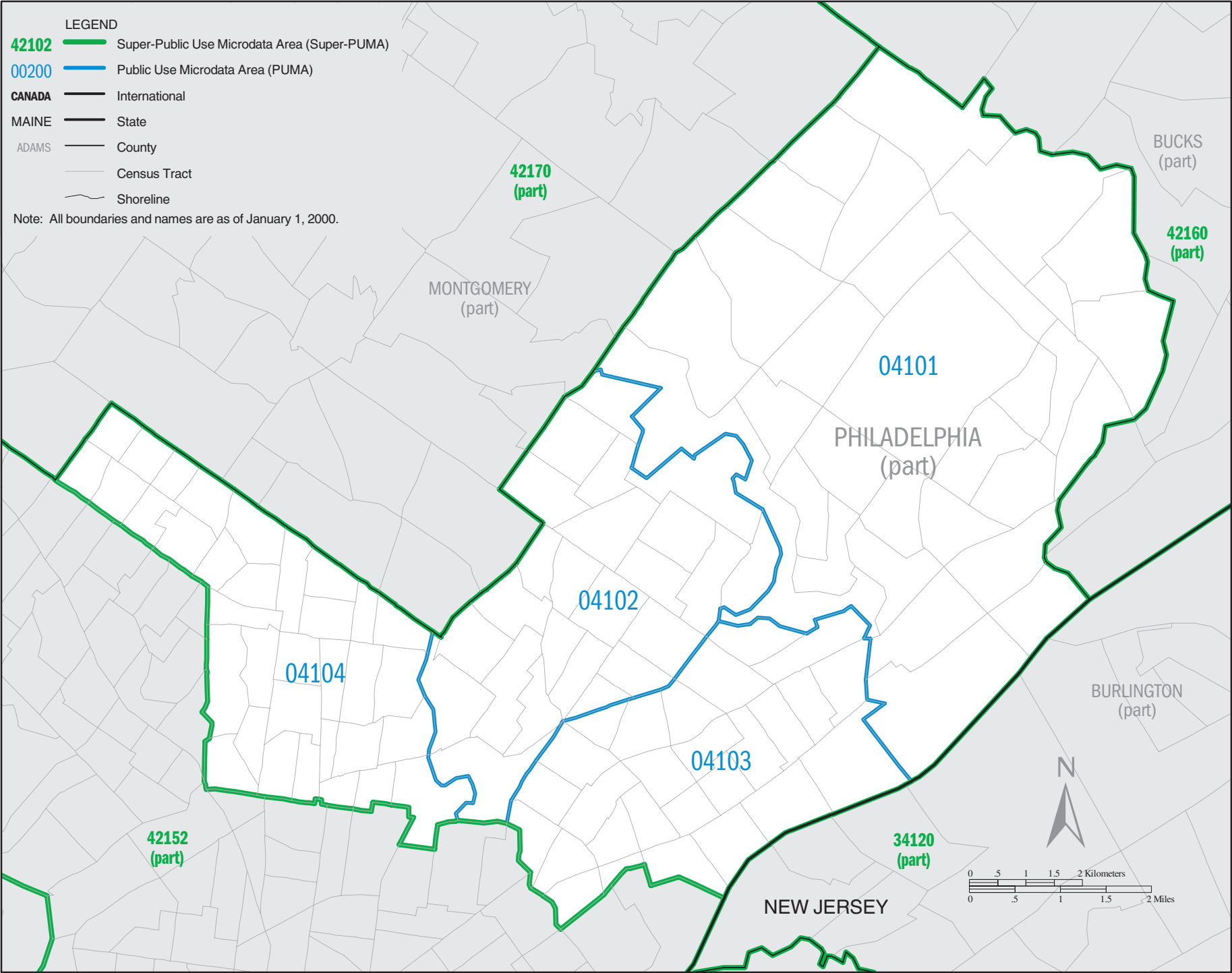


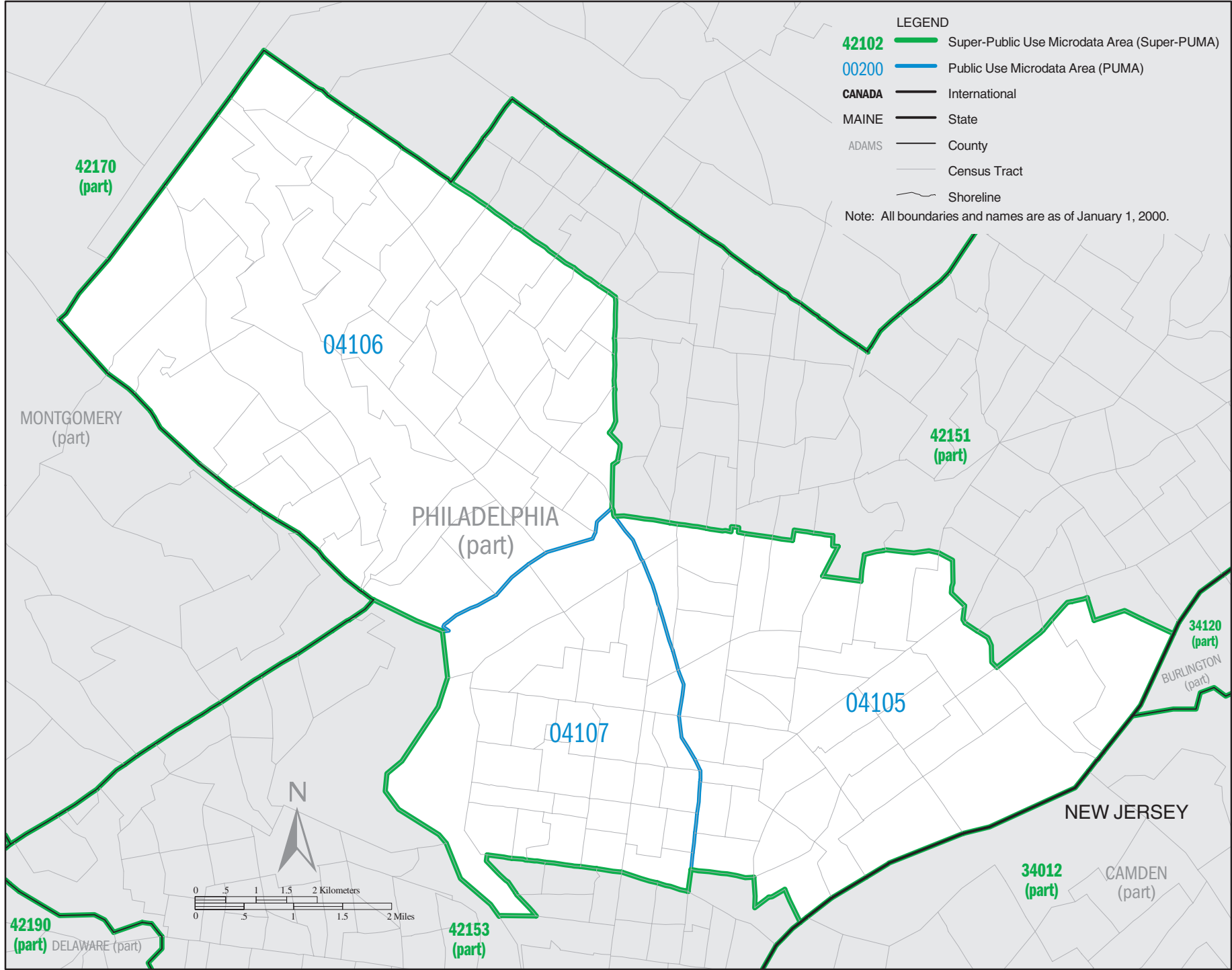
LEGEND

- 42102** Super-Public Use Microdata Area (Super-PUMA)
- 00200** Public Use Microdata Area (PUMA)
- CANADA** International
- MAINE** State
- ADAMS** County
- Census Tract
- Shoreline

Note: All boundaries and names are as of January 1, 2000.







PENNSYLVANIA Super-PUMA 42153: Census 2000 Public Use Microdata Areas (PUMAs)

