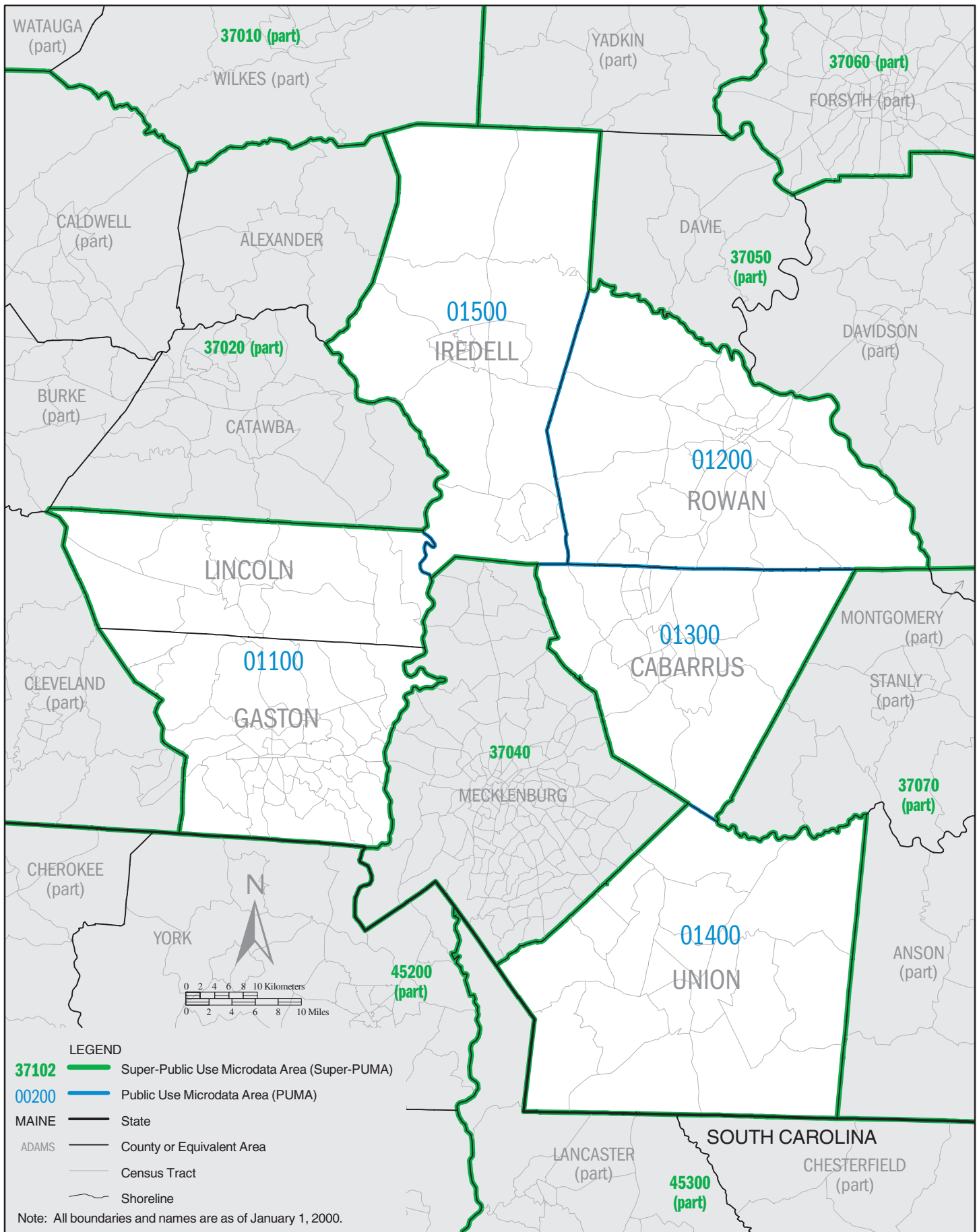


**LEGEND**

- 37102  Super-Public Use Microdata Area (Super-PUMA)
- 00200  Public Use Microdata Area (PUMA)
- MAINE**  State
- ADAMS**  County or Equivalent Area
- Census Tract
- Shoreline

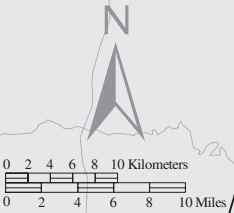
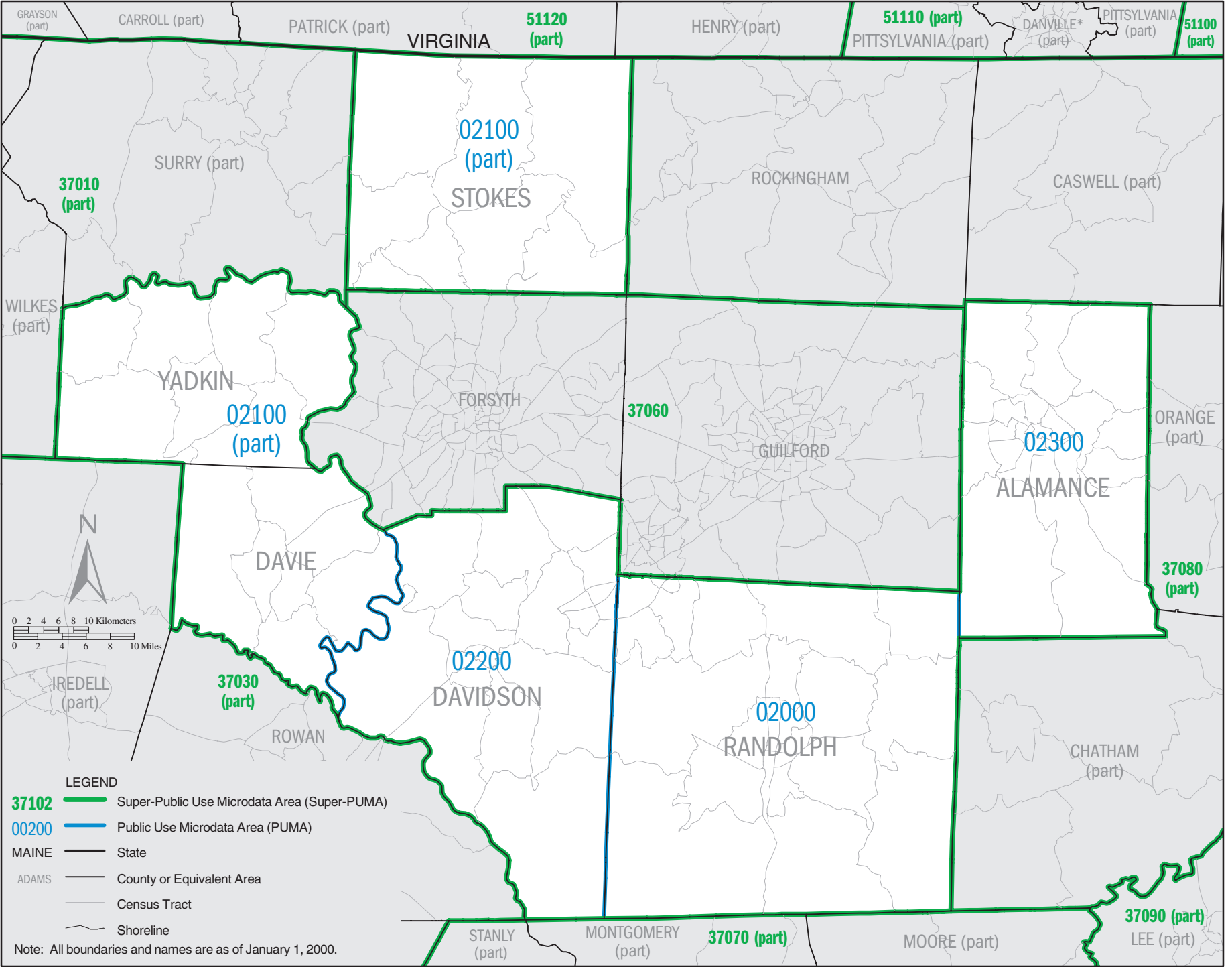
Note: All boundaries and names are as of January 1, 2000.

**NORTH CAROLINA Super-PUMA 37030: Census 2000 Public Use Microdata Areas (PUMAs)**







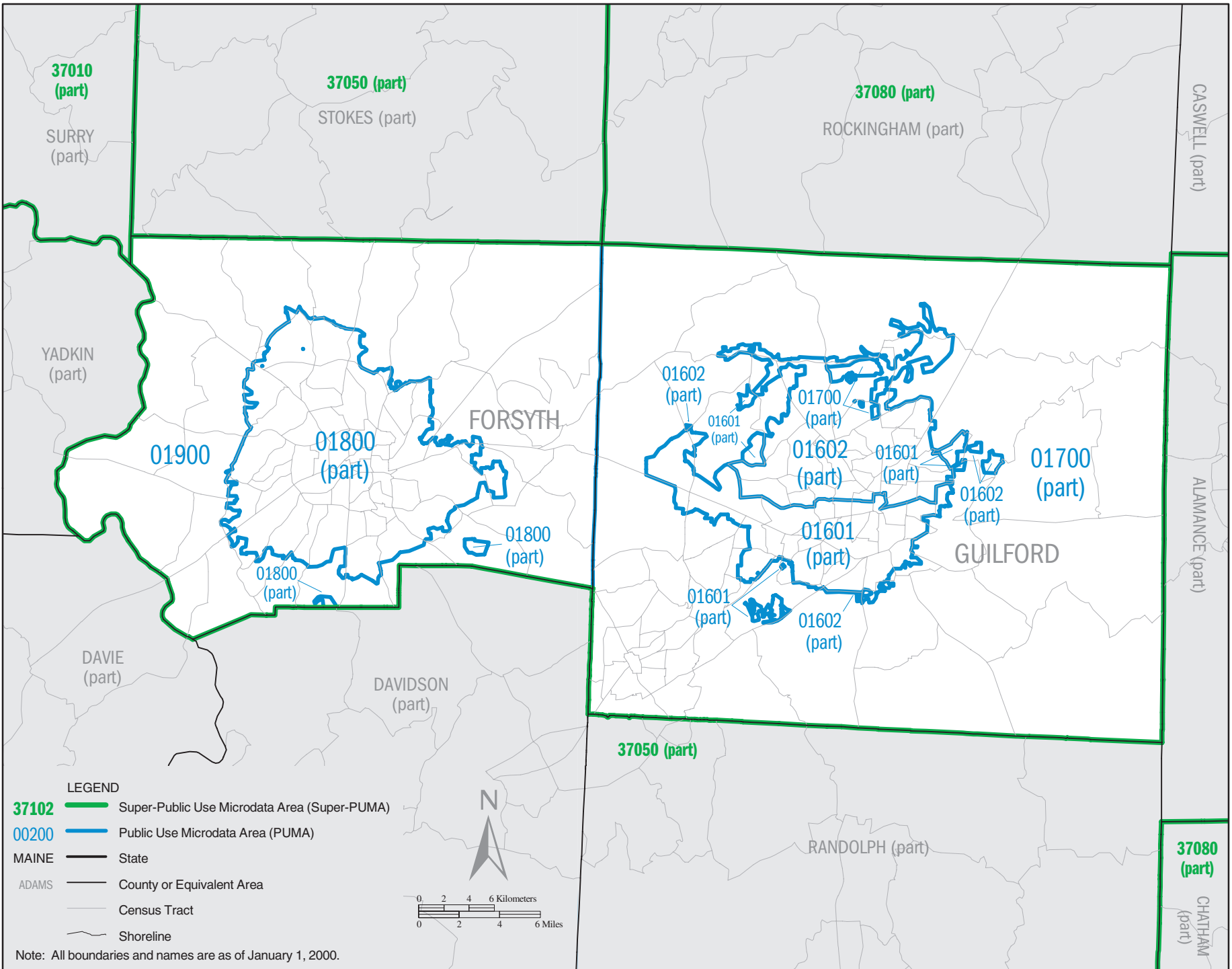


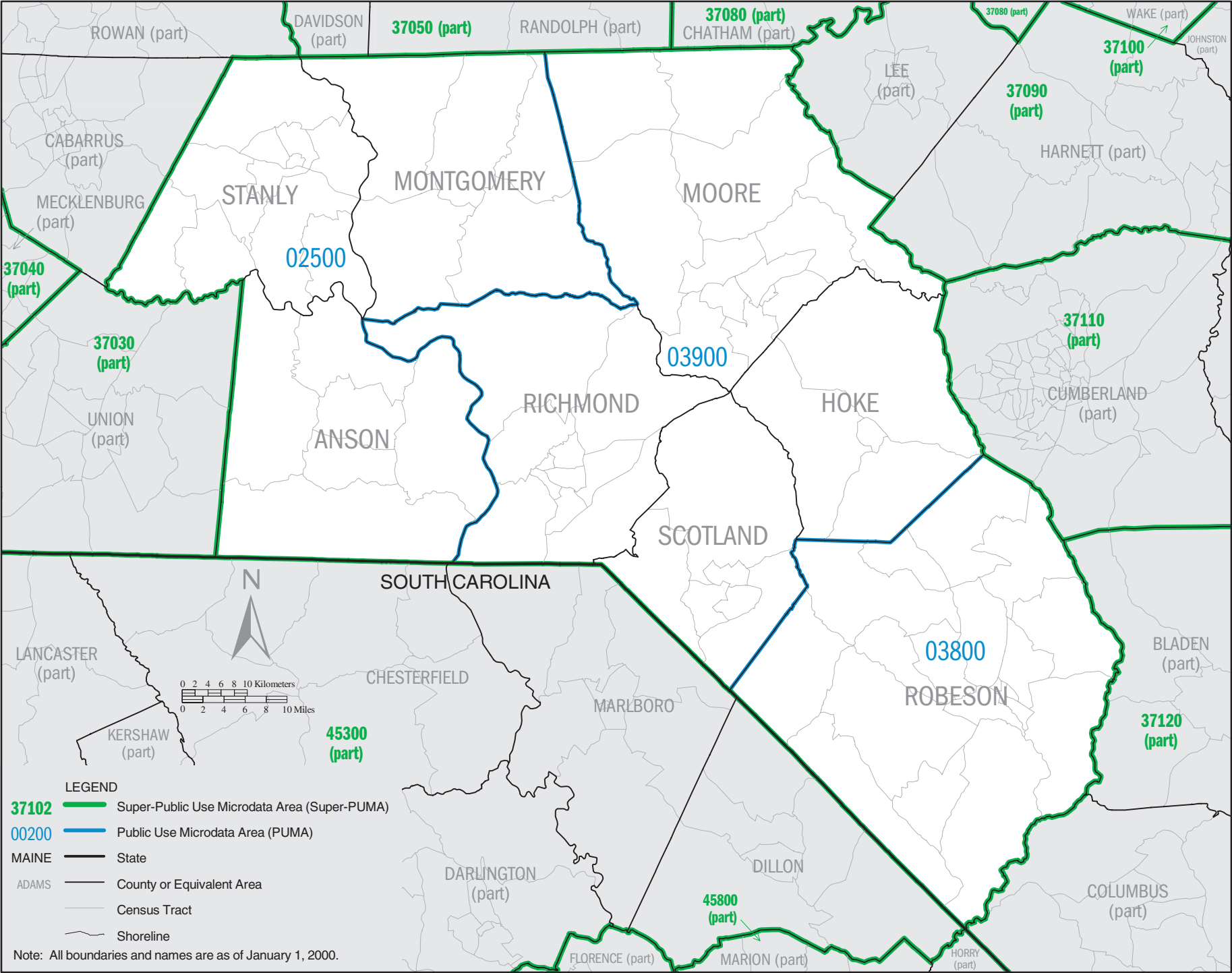
**LEGEND**

- 37102** Super-Public Use Microdata Area (Super-PUMA)
- 00200** Public Use Microdata Area (PUMA)
- MAINE State
- ADAMS County or Equivalent Area
- Census Tract
- Shoreline

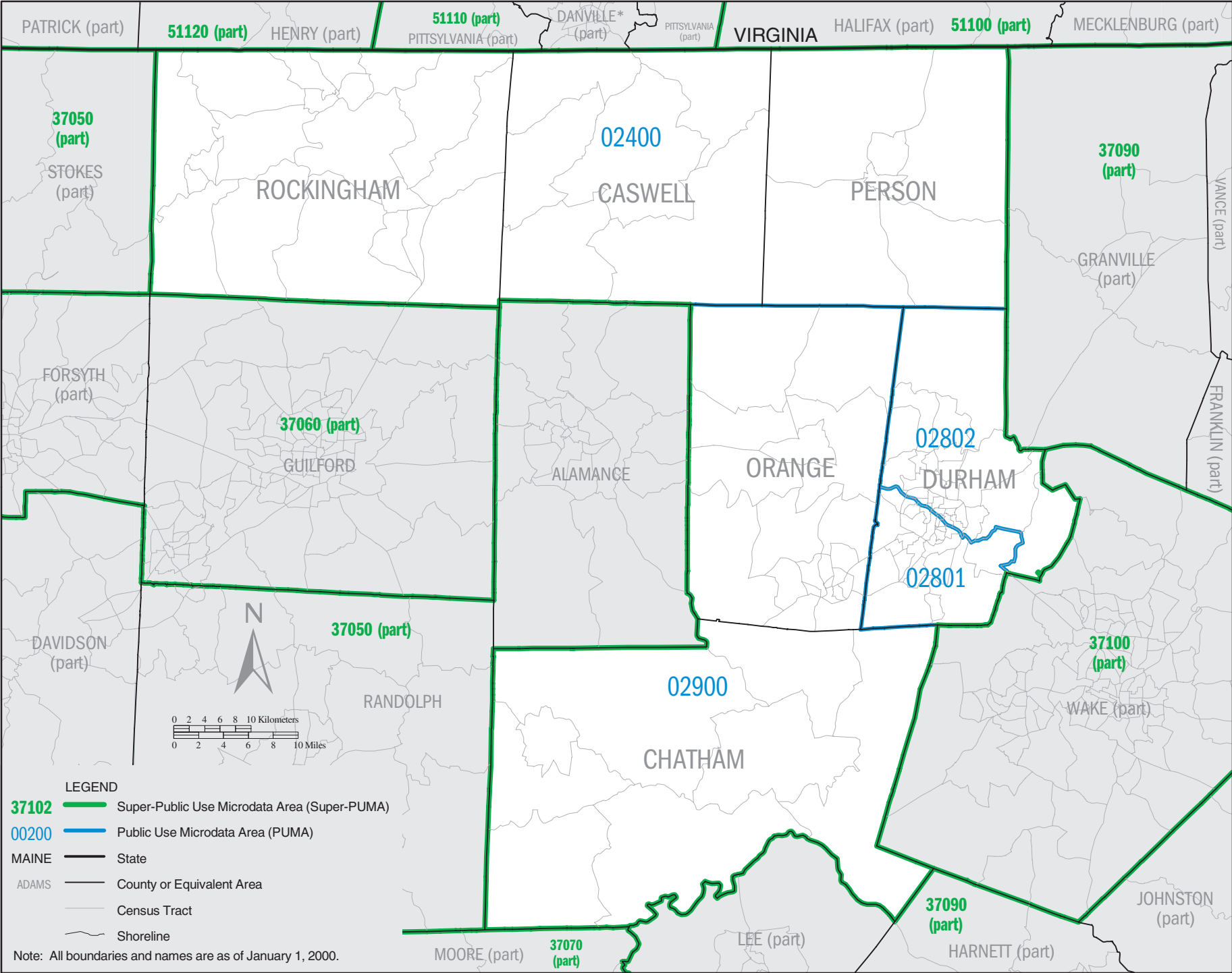
Note: All boundaries and names are as of January 1, 2000.

**NORTH CAROLINA Super-PUMA 37060: Census 2000 Public Use Microdata Areas (PUMAs)**







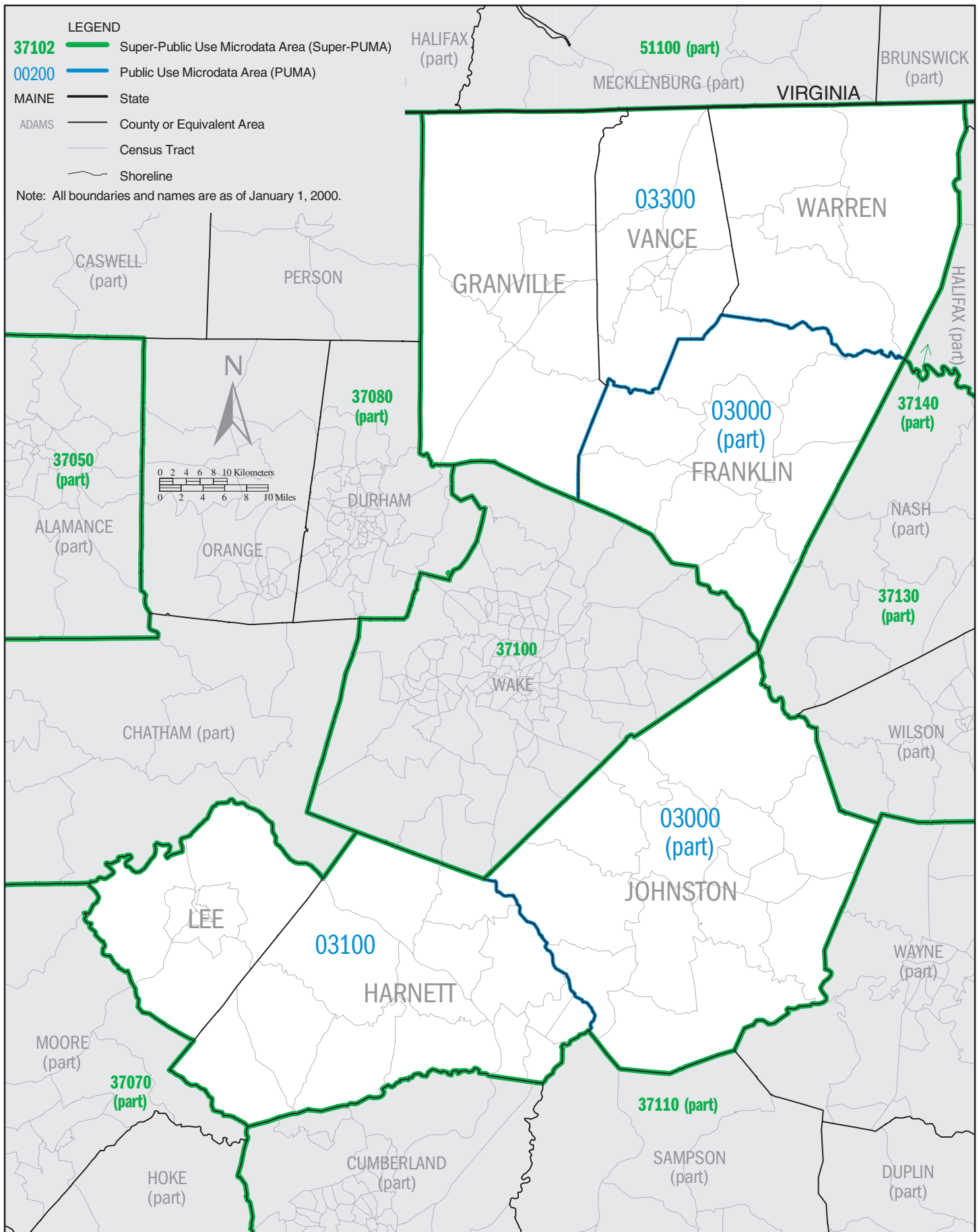


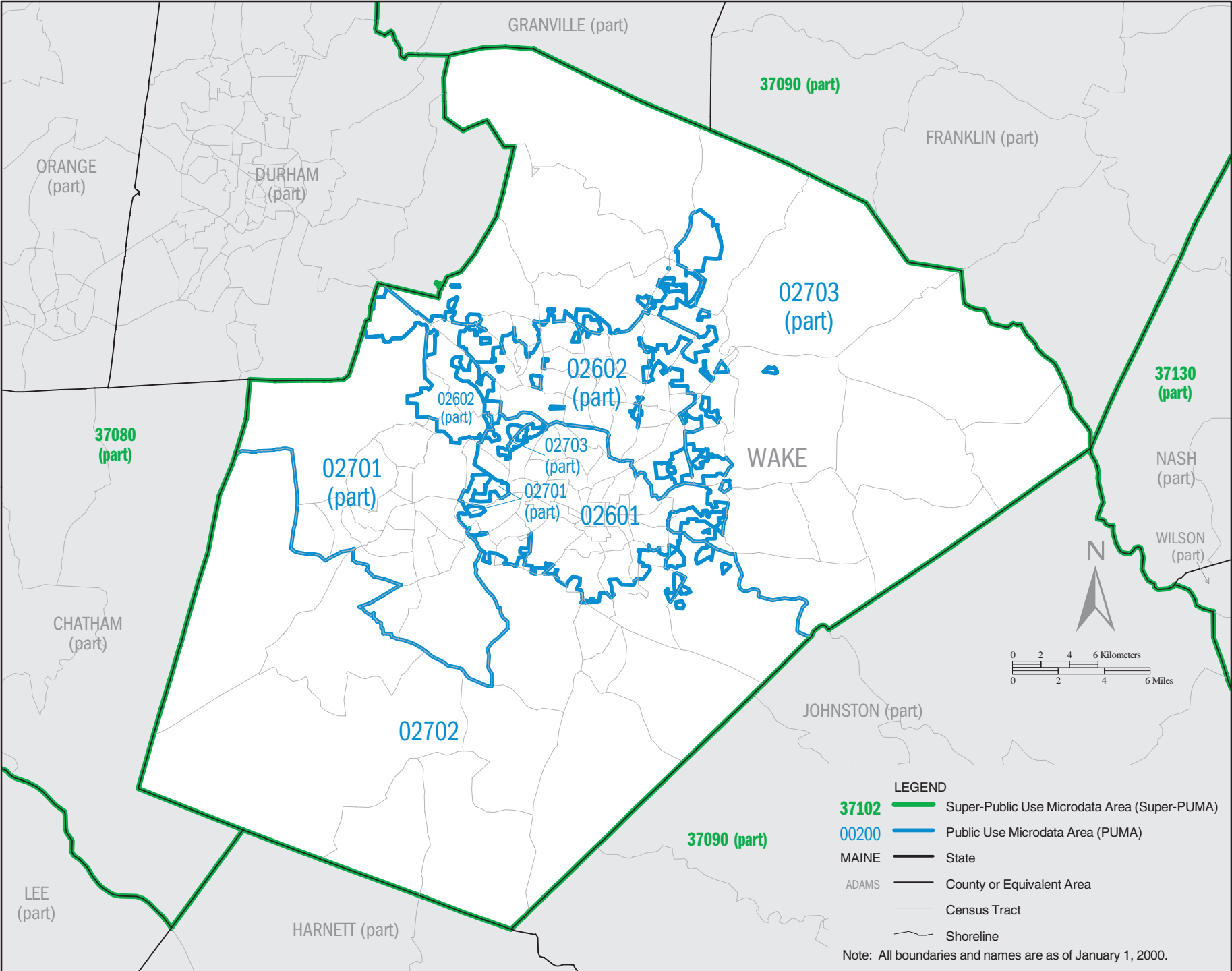
**LEGEND**

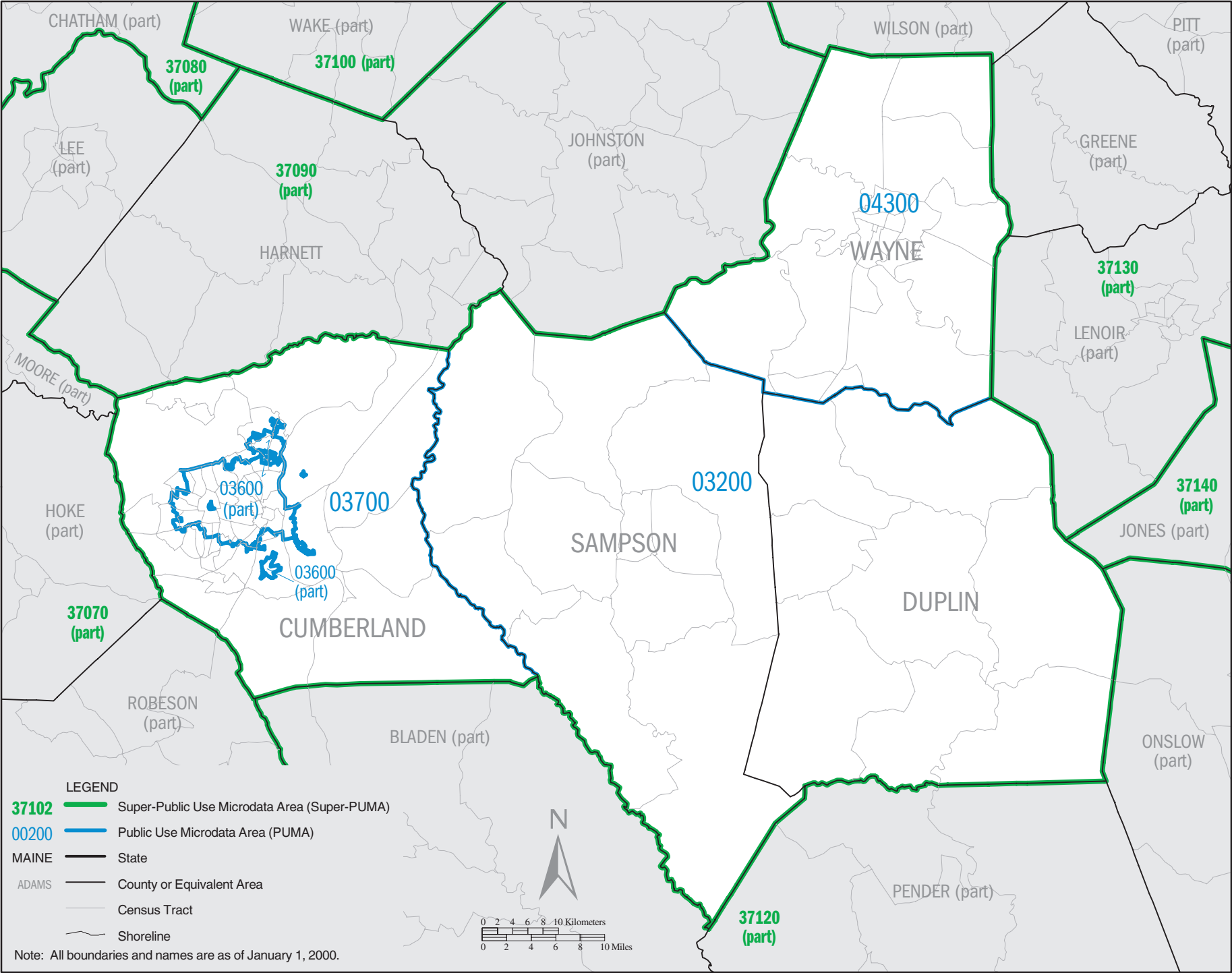
- 37102** Super-Public Use Microdata Area (Super-PUMA)
- 00200** Public Use Microdata Area (PUMA)
- MAINE State
- ADAMS County or Equivalent Area
- County or Equivalent Area
- Census Tract
- Shoreline

Note: All boundaries and names are as of January 1, 2000.

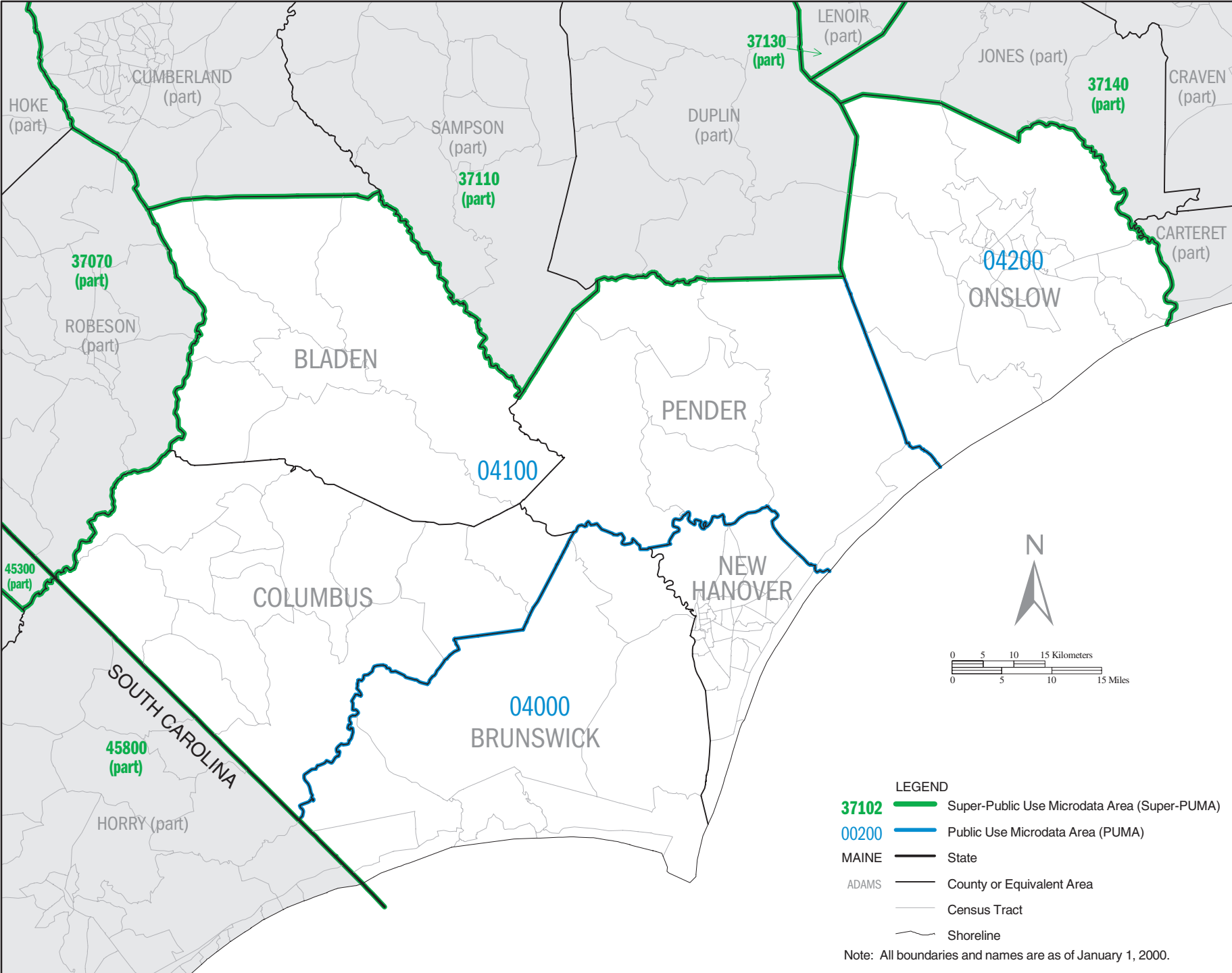
# NORTH CAROLINA Super-PUMA 37090: Census 2000 Public Use Microdata Areas (PUMAs)



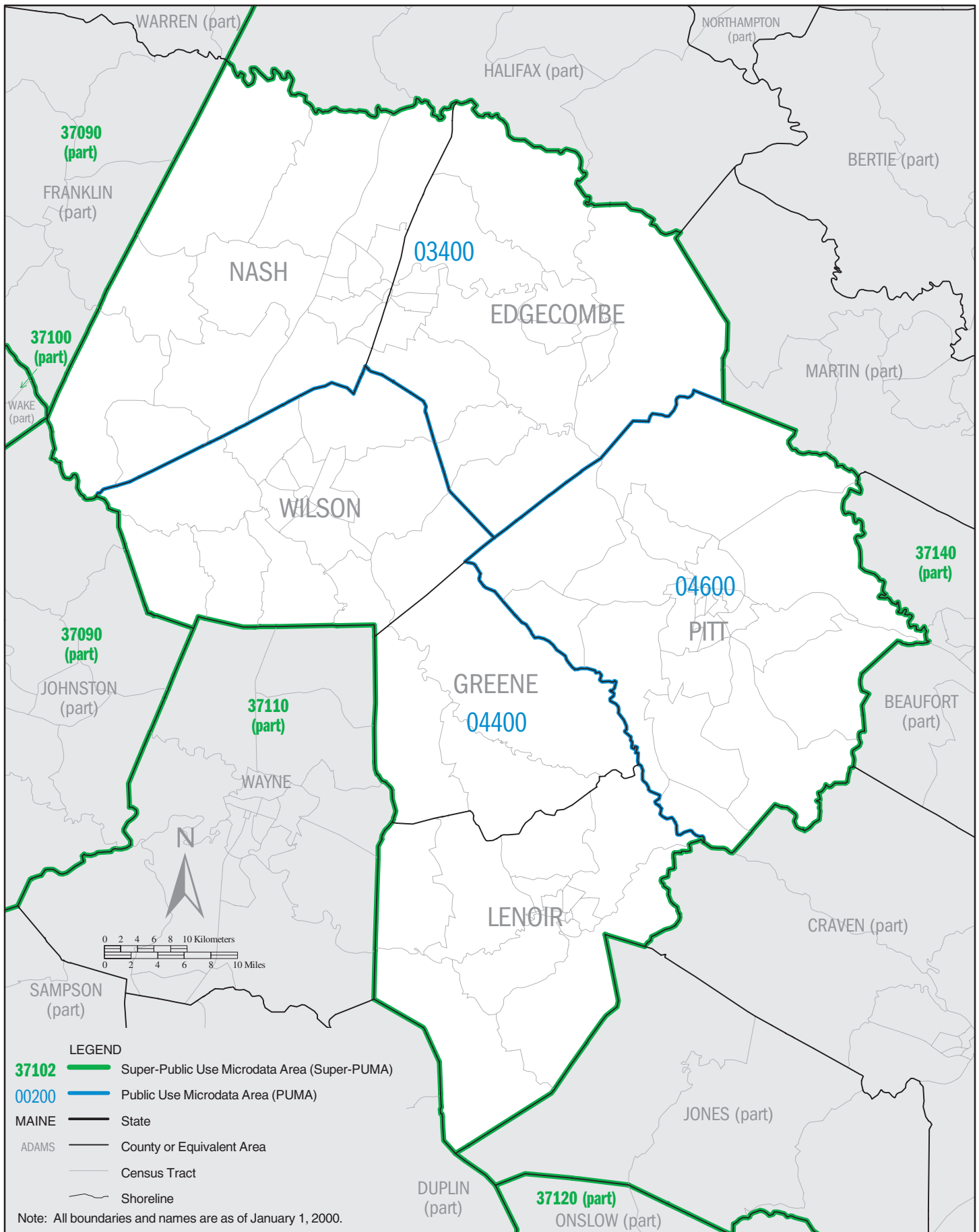




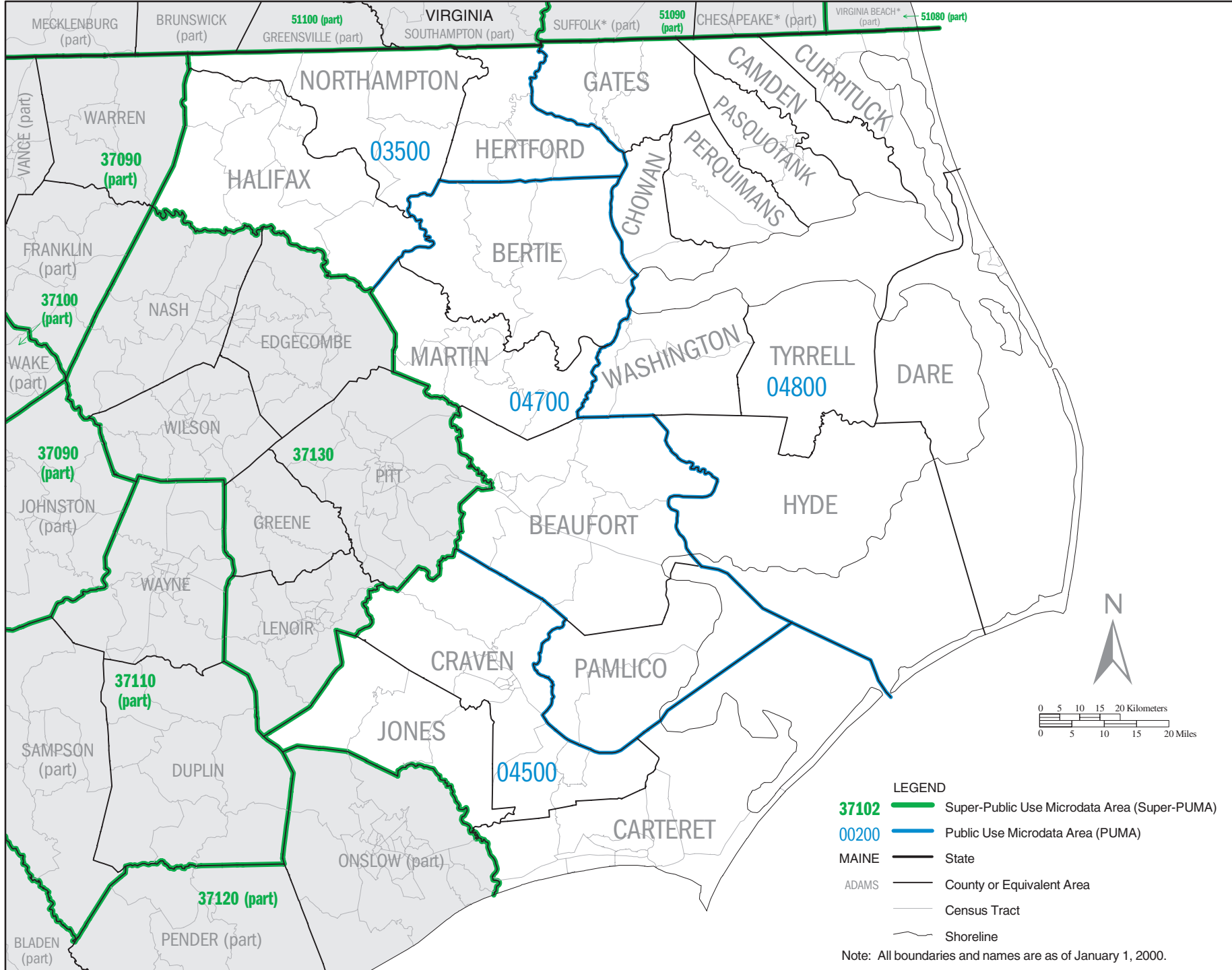




# NORTH CAROLINA Super-PUMA 37130: Census 2000 Public Use Microdata Areas (PUMAs)



**NORTH CAROLINA Super-PUMA 37140: Census 2000 Public Use Microdata Areas (PUMAs)**



Public Use Microdata Sample (PUMS) files  
U.S. Census Bureau, Census 2000

North Carolina 15