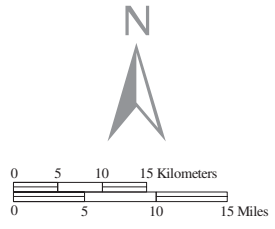
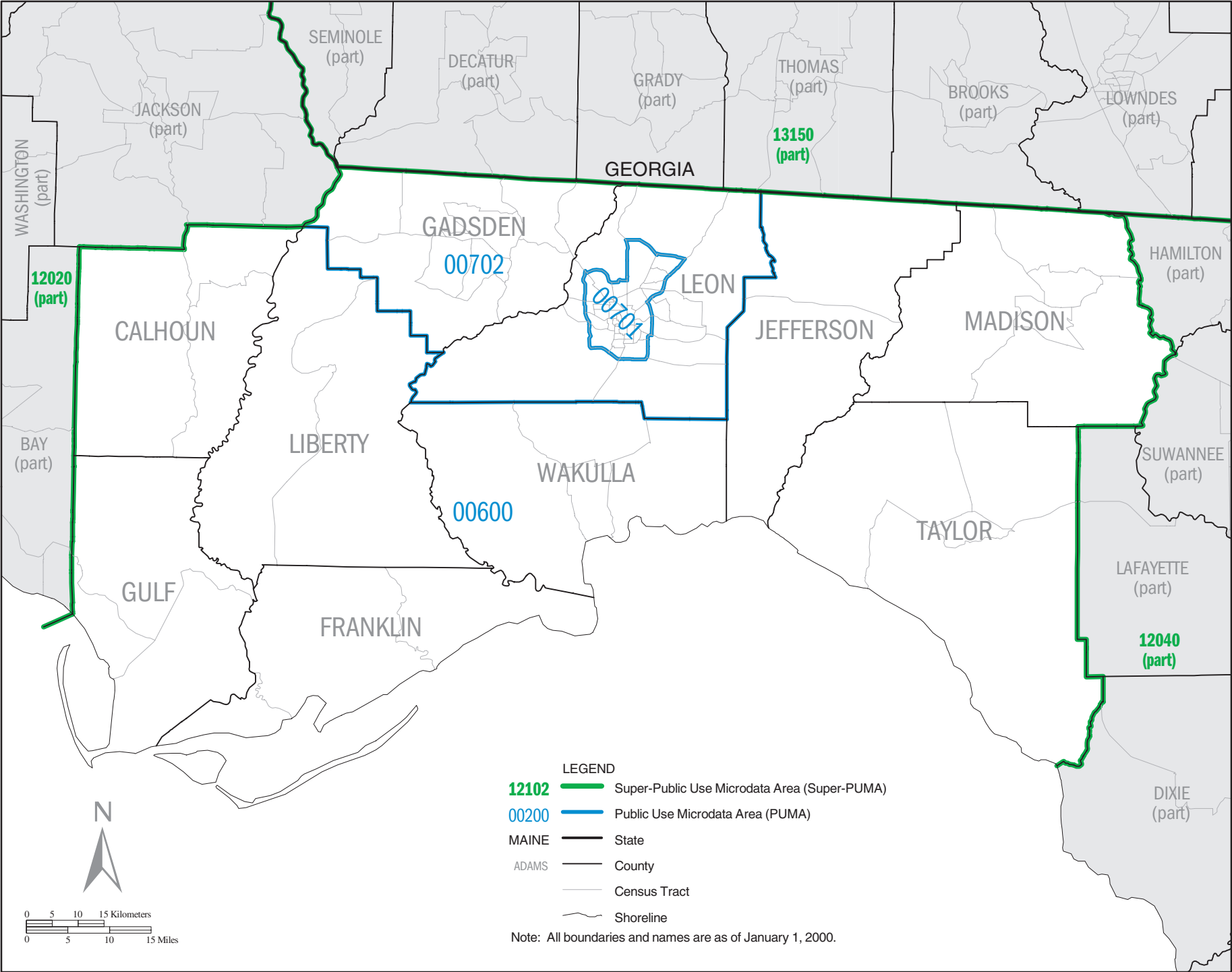


**LEGEND**

- 12102** Super-Public Use Microdata Area (Super-PUMA)
- 00200** Public Use Microdata Area (PUMA)
- MAINE State
- ADAMS County
- Census Tract
- Shoreline

Note: All boundaries and names are as of January 1, 2000.

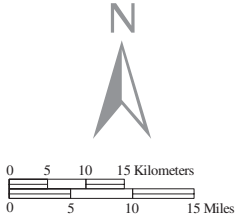




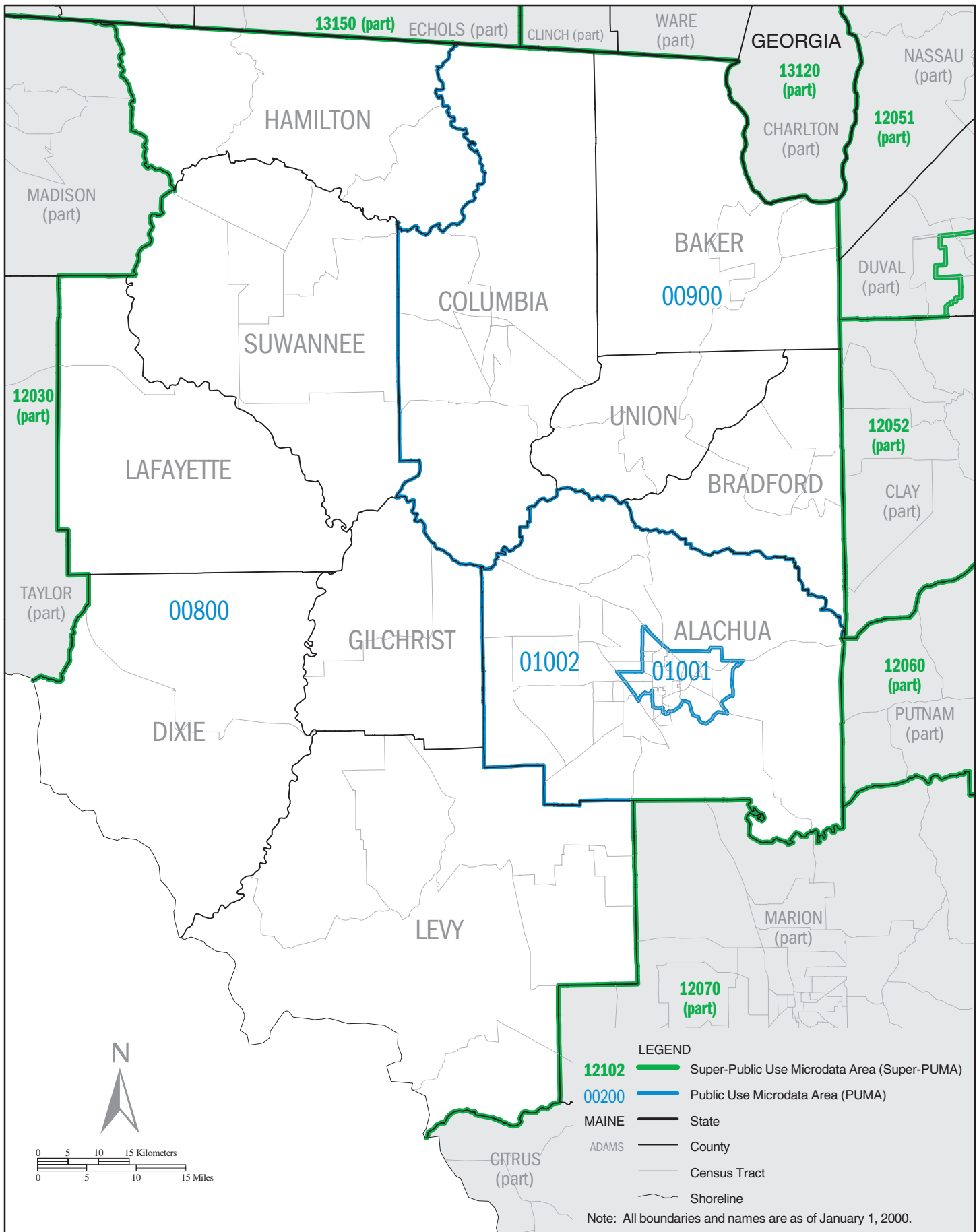
**LEGEND**

- 12102  Super-Public Use Microdata Area (Super-PUMA)
- 00200  Public Use Microdata Area (PUMA)
- MAINE  State
- ADAMS  County
- Census Tract
- Shoreline

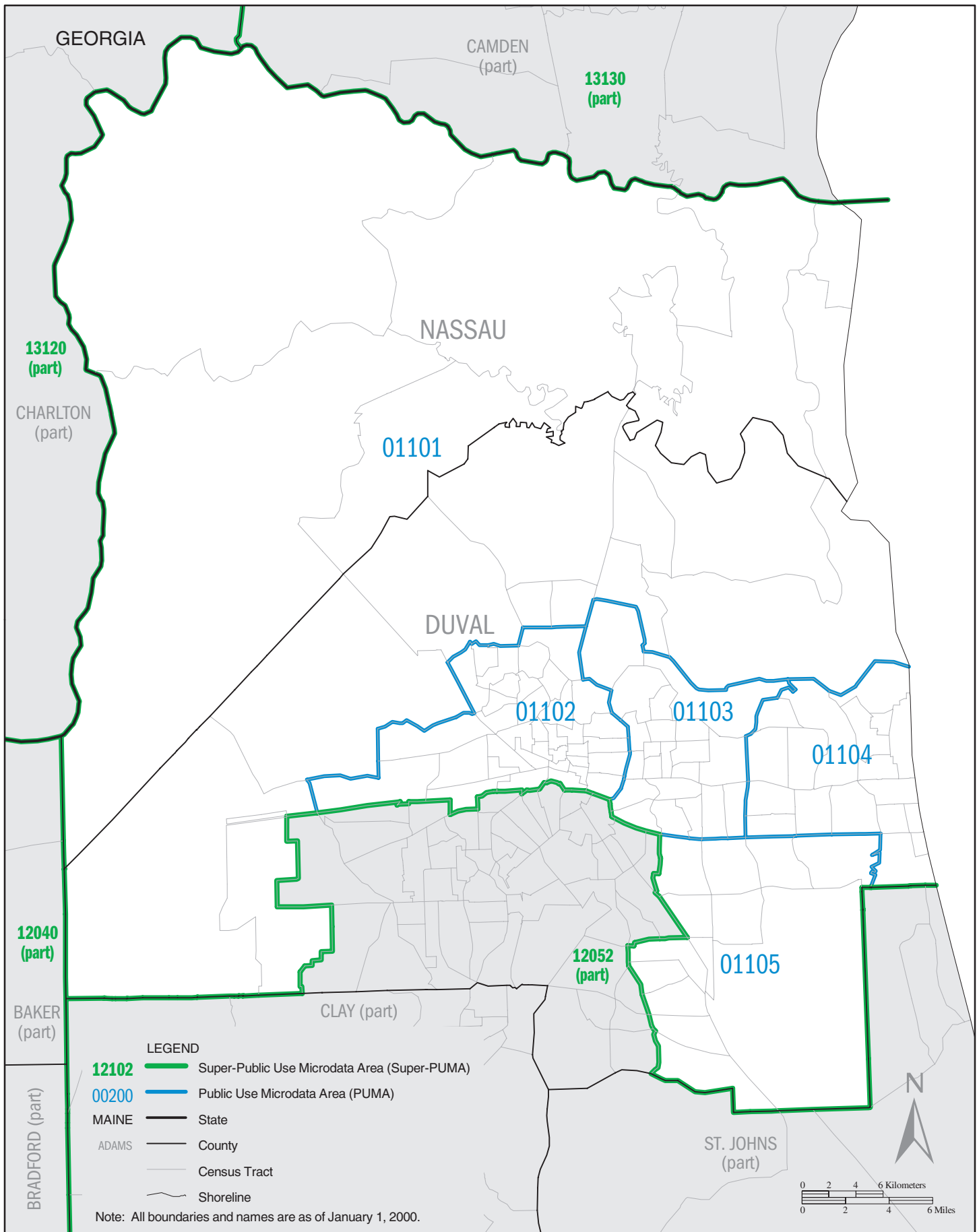
Note: All boundaries and names are as of January 1, 2000.

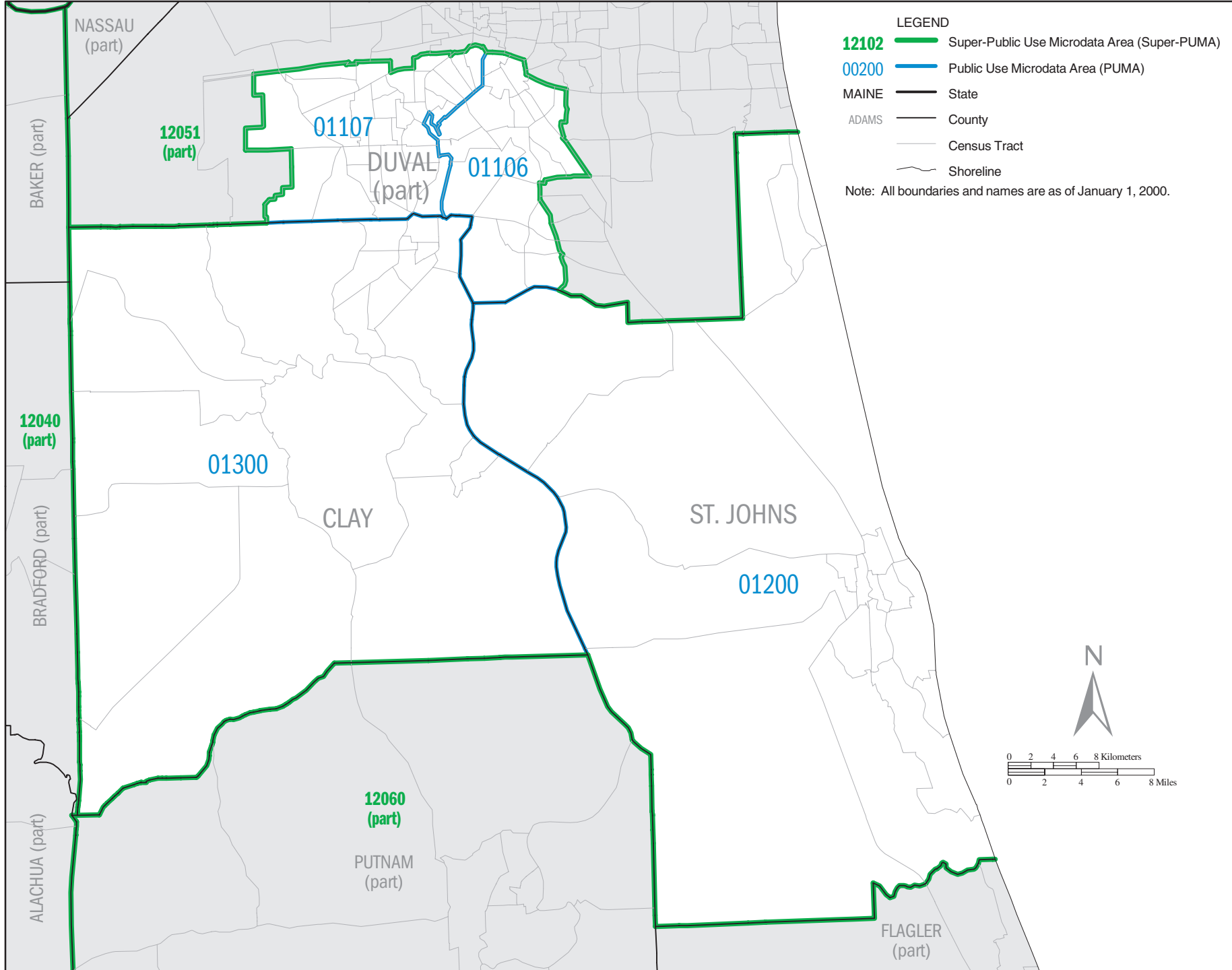


**FLORIDA Super-PUMA 12040: Census 2000 Public Use Microdata Areas (PUMAs)**

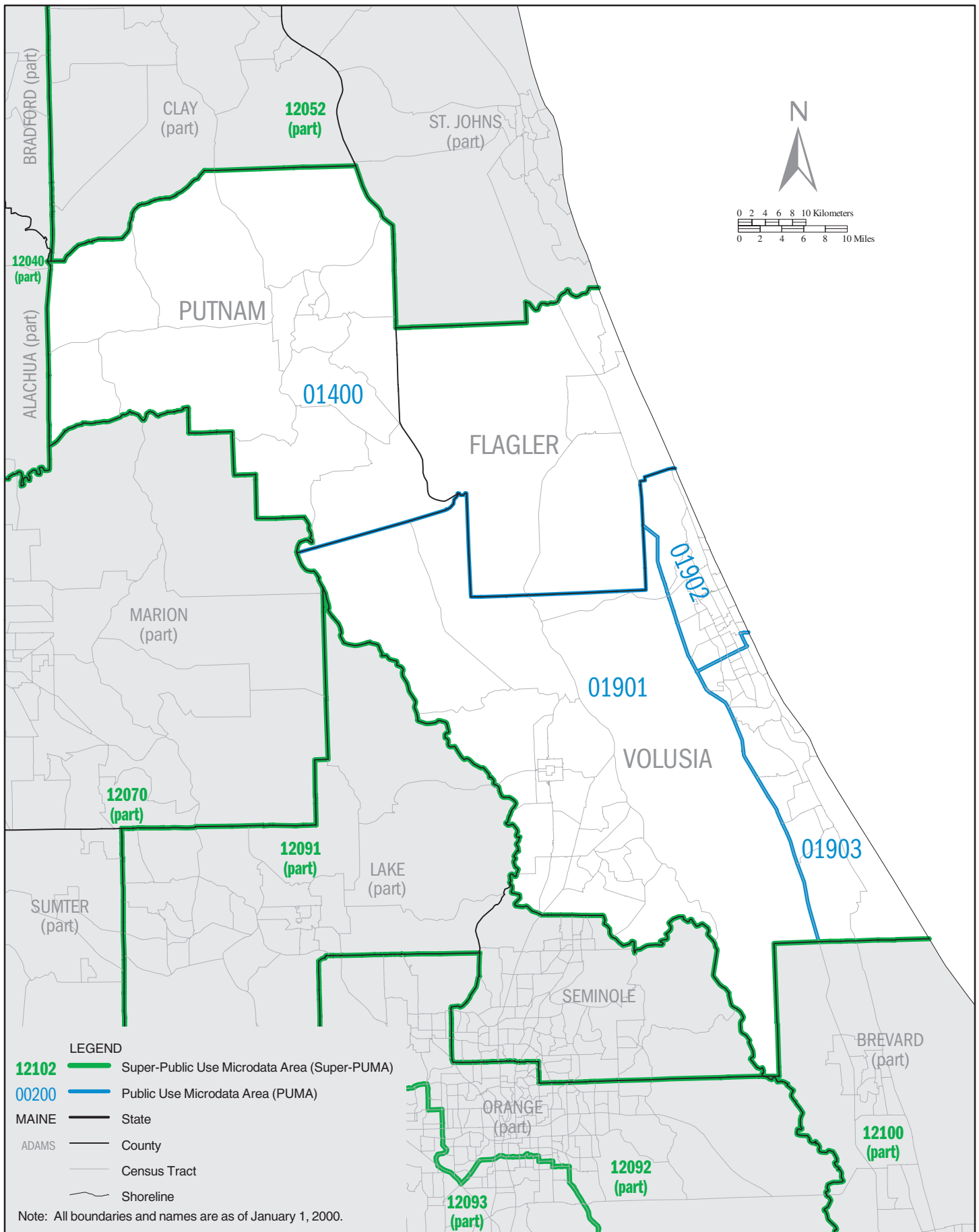


**FLORIDA Super-PUMA 12051: Census 2000 Public Use Microdata Areas (PUMAs)**



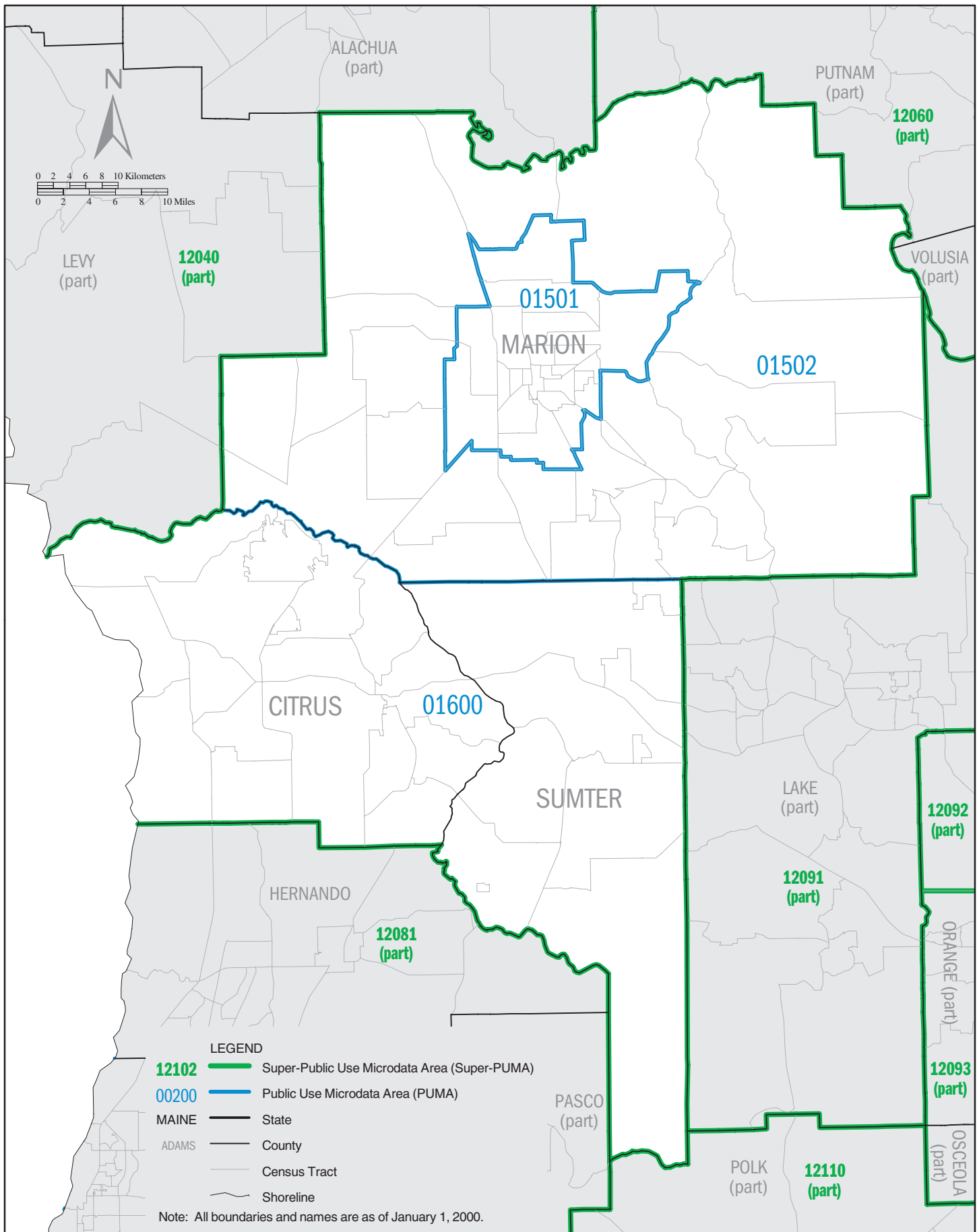


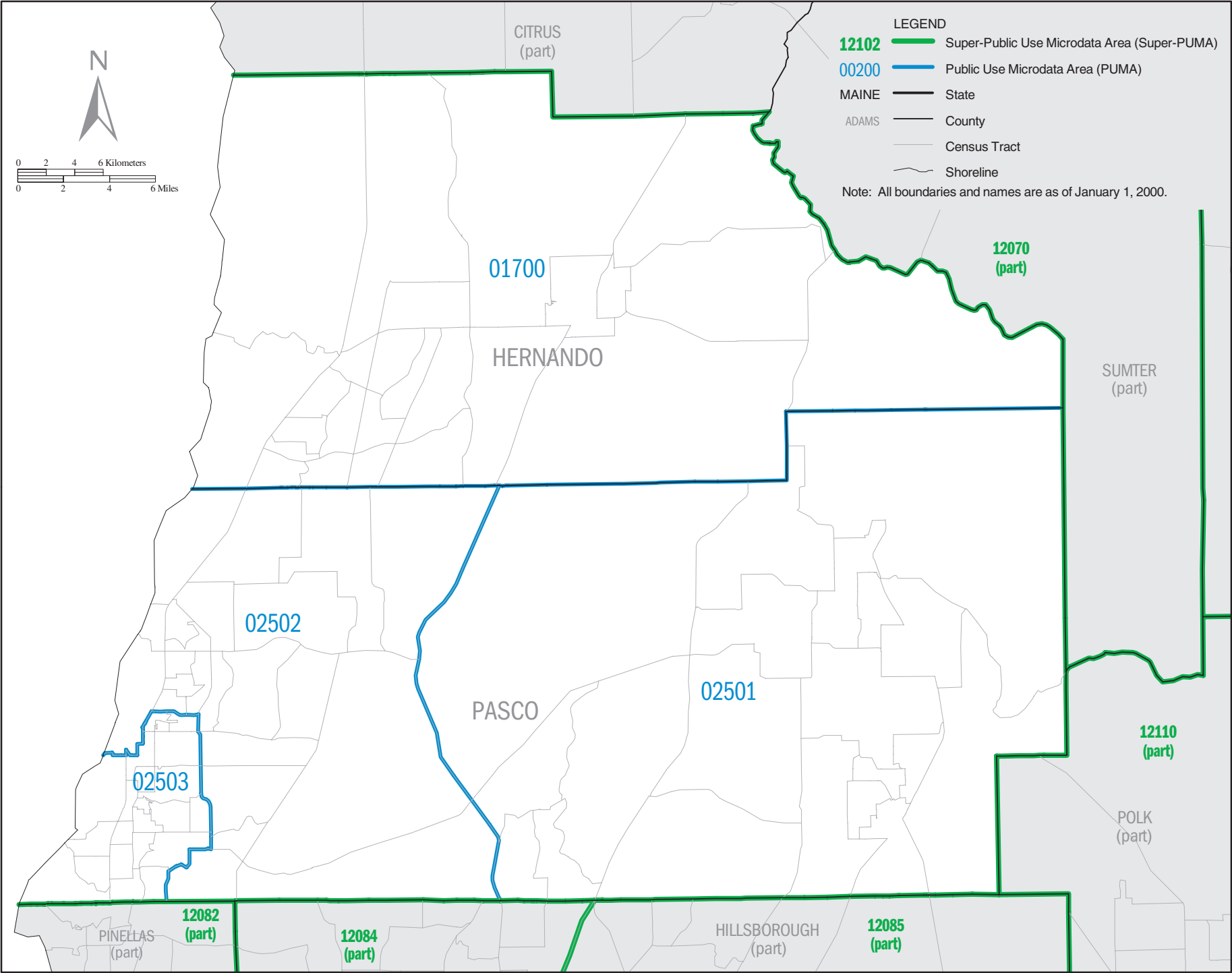
**FLORIDA Super-PUMA 12060: Census 2000 Public Use Microdata Areas (PUMAs)**



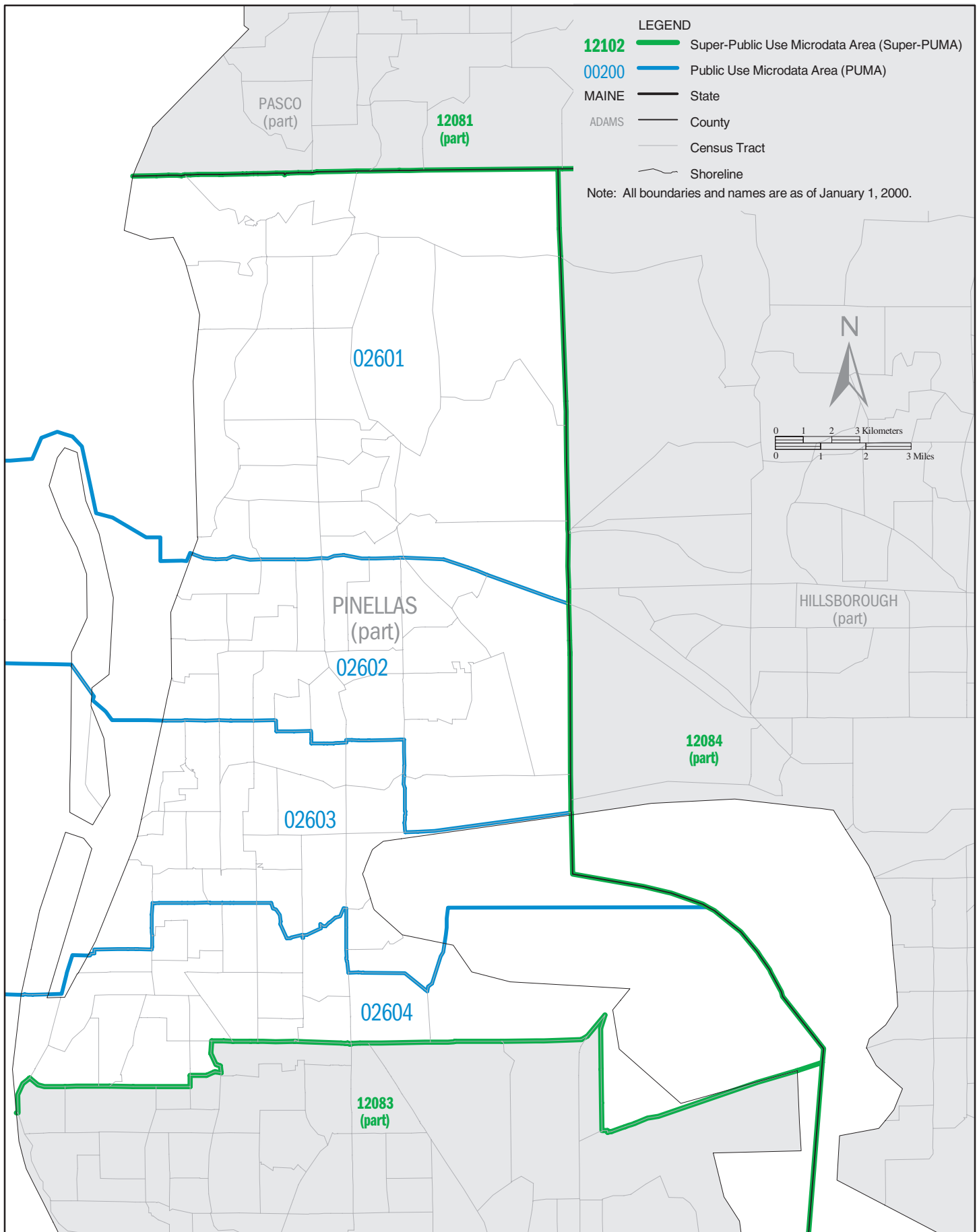


# FLORIDA Super-PUMA 12070: Census 2000 Public Use Microdata Areas (PUMAs)

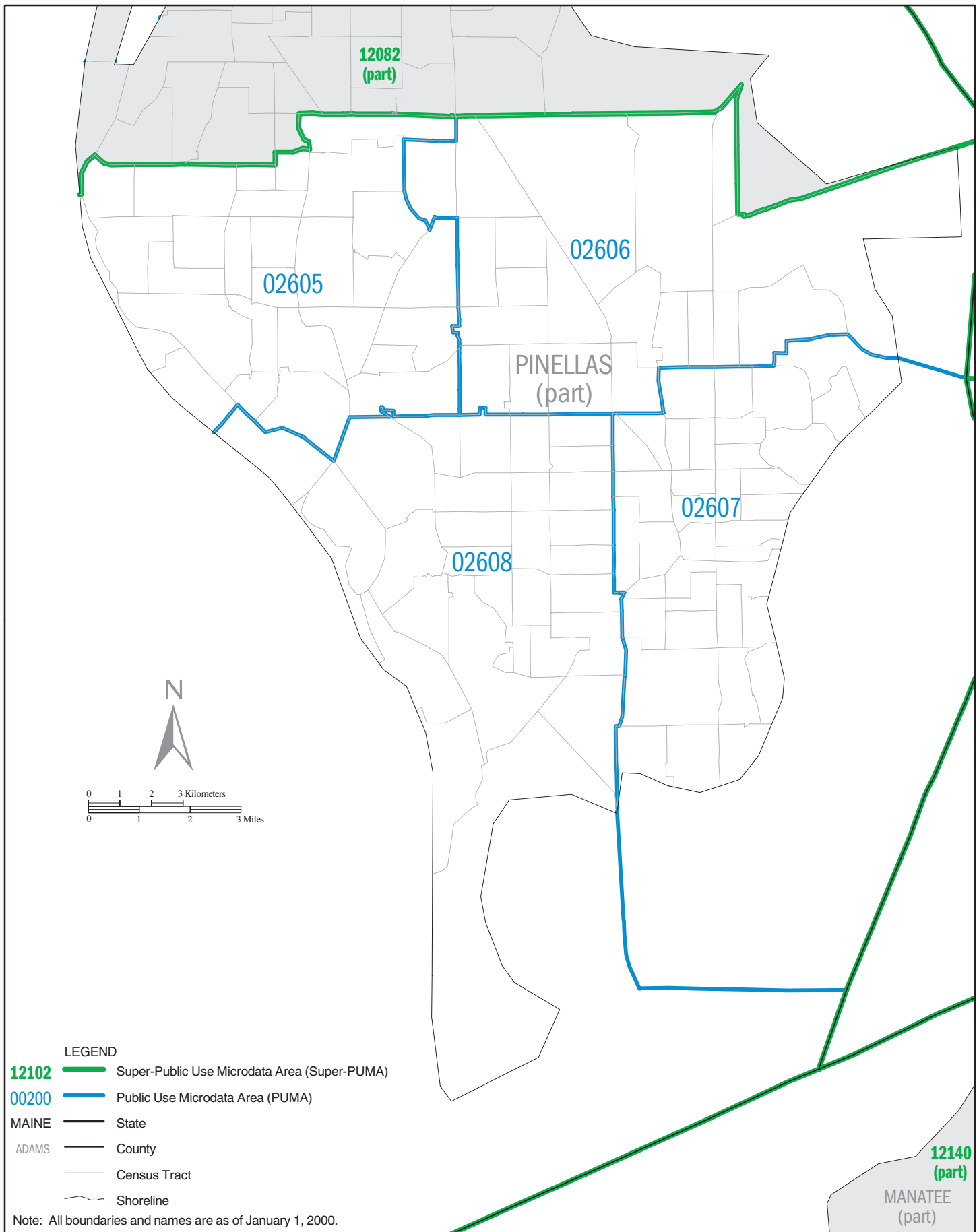




# FLORIDA Super-PUMA 12082: Census 2000 Public Use Microdata Areas (PUMAs)

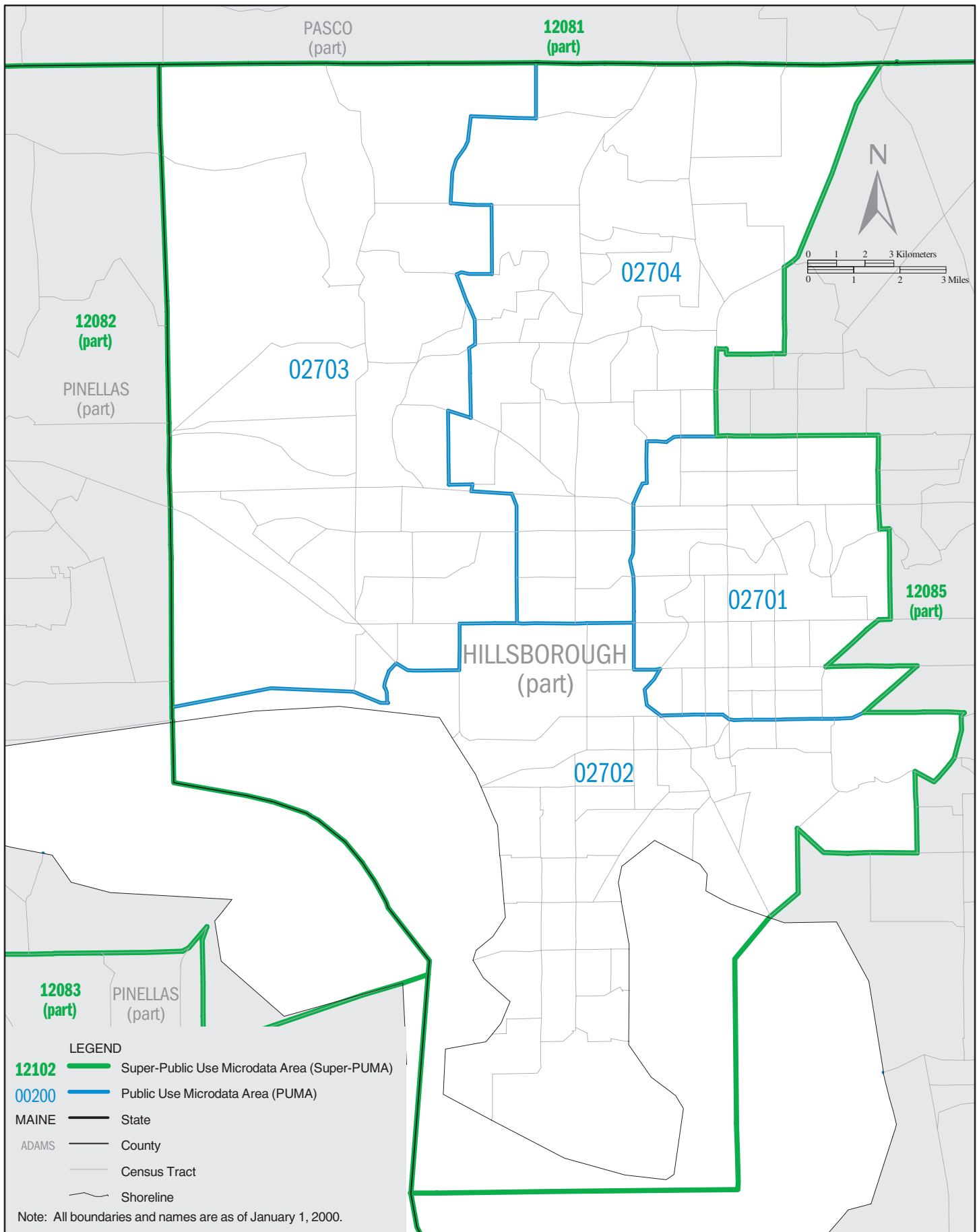


**FLORIDA Super-PUMA 12083: Census 2000 Public Use Microdata Areas (PUMAs)**



Note: All boundaries and names are as of January 1, 2000.

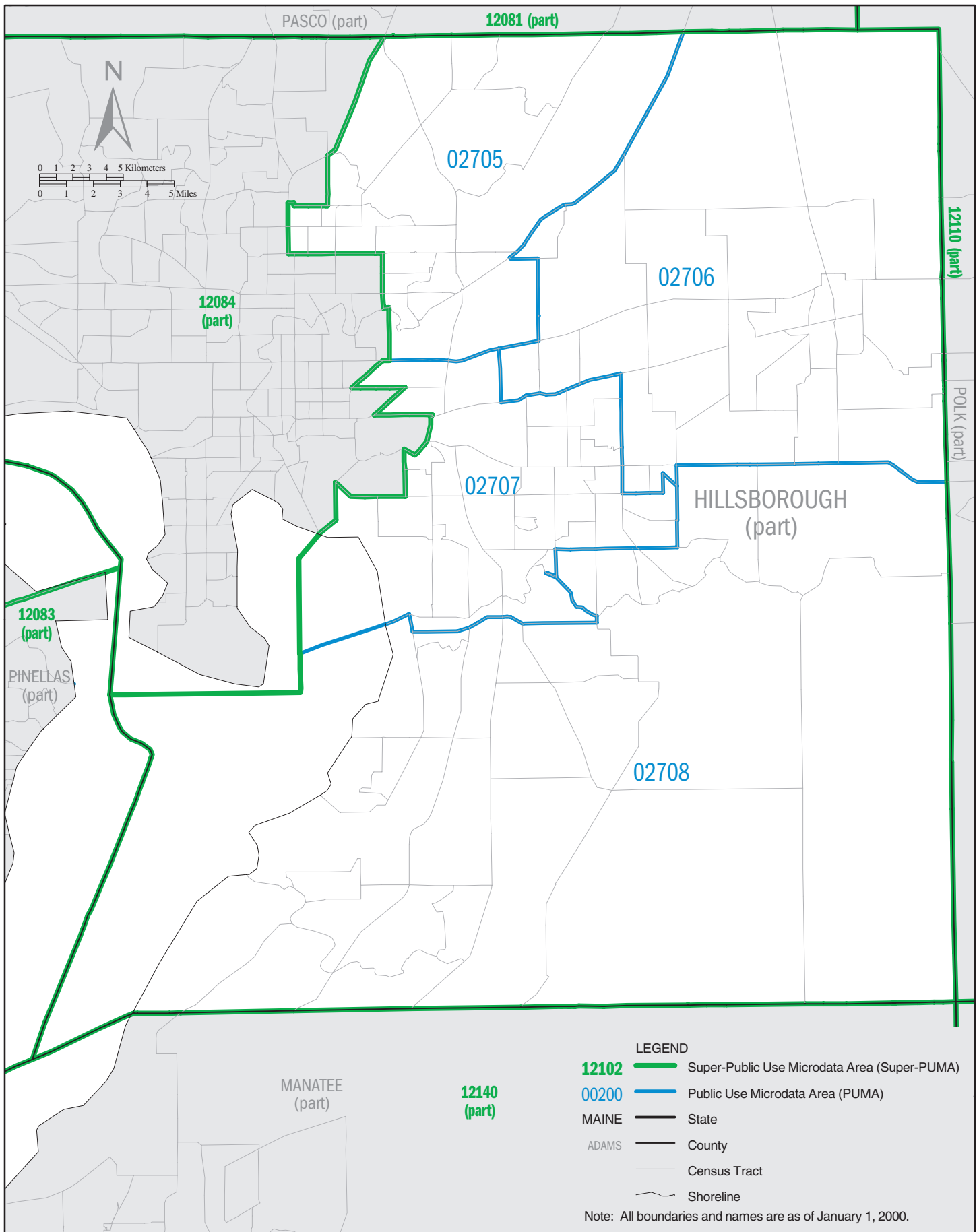
**FLORIDA Super-PUMA 12084: Census 2000 Public Use Microdata Areas (PUMAs)**



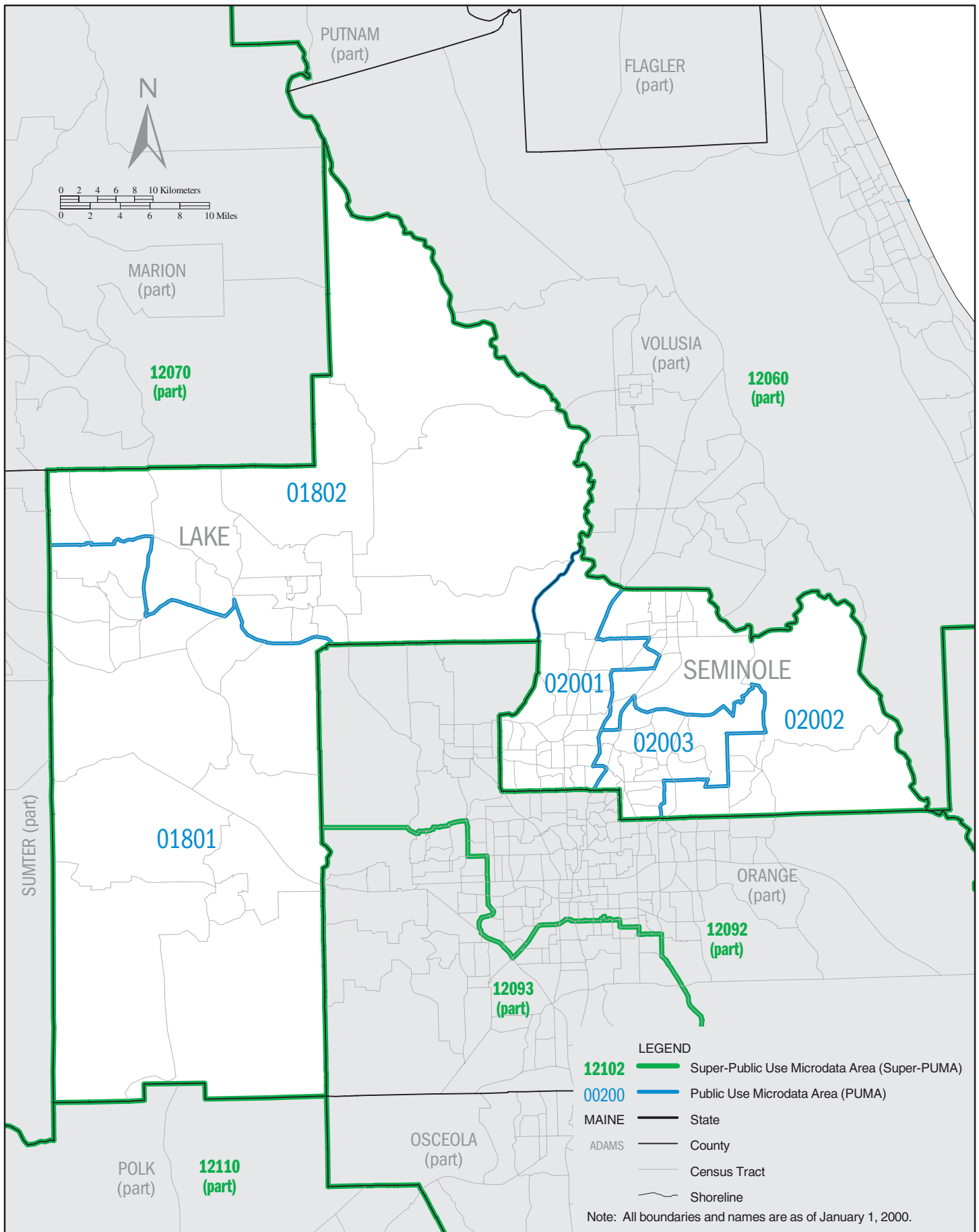
- LEGEND**
- 12102** Super-Public Use Microdata Area (Super-PUMA)
  - 00200** Public Use Microdata Area (PUMA)
  - MAINE** State
  - ADAMS** County
  - Census Tract
  - Shoreline

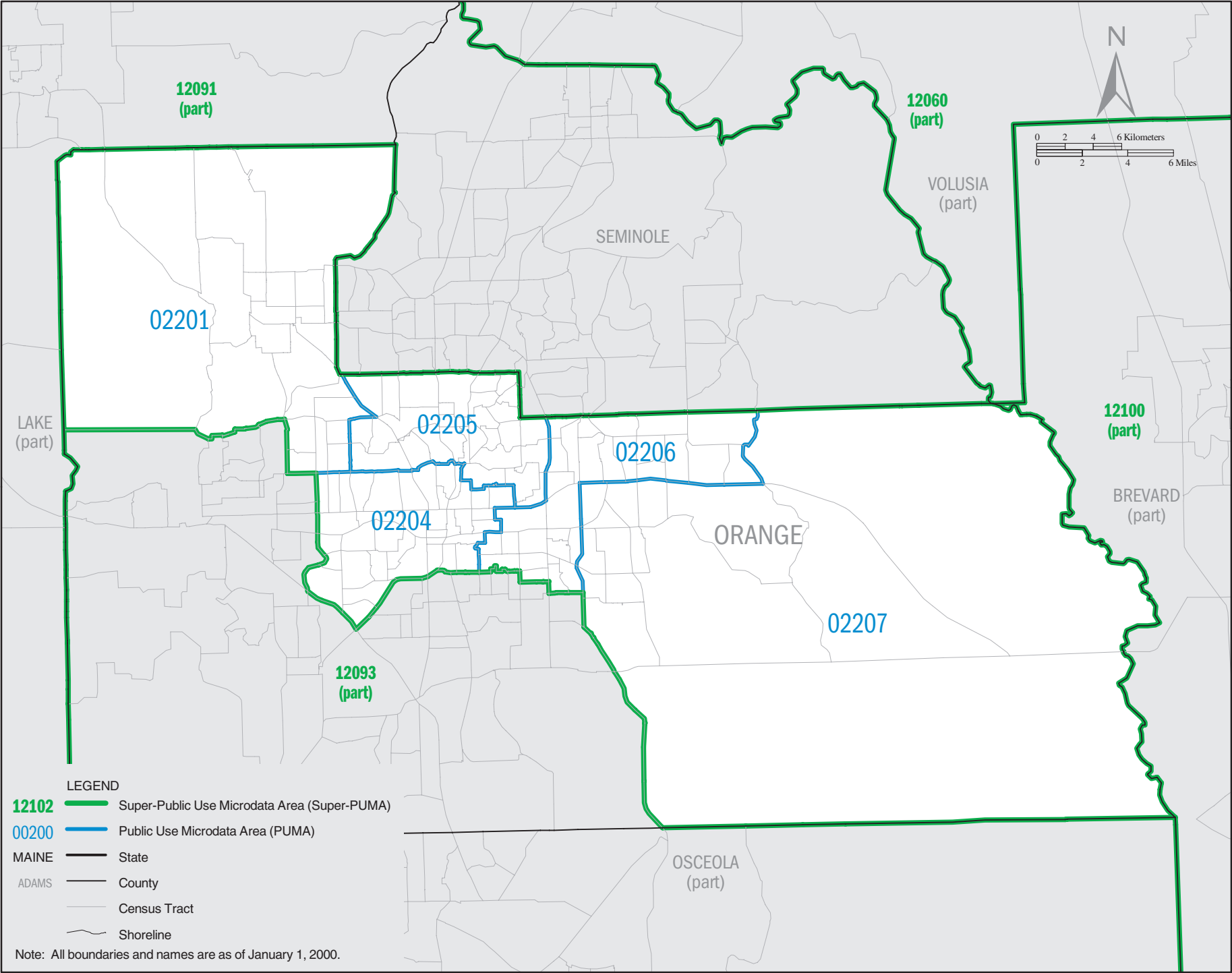
Note: All boundaries and names are as of January 1, 2000.

**FLORIDA Super-PUMA 12085: Census 2000 Public Use Microdata Areas (PUMAs)**



# FLORIDA Super-PUMA 12091: Census 2000 Public Use Microdata Areas (PUMAs)





**LEGEND**

**12102** Super-Public Use Microdata Area (Super-PUMA)

**00200** Public Use Microdata Area (PUMA)

MAINE State

ADAMS County

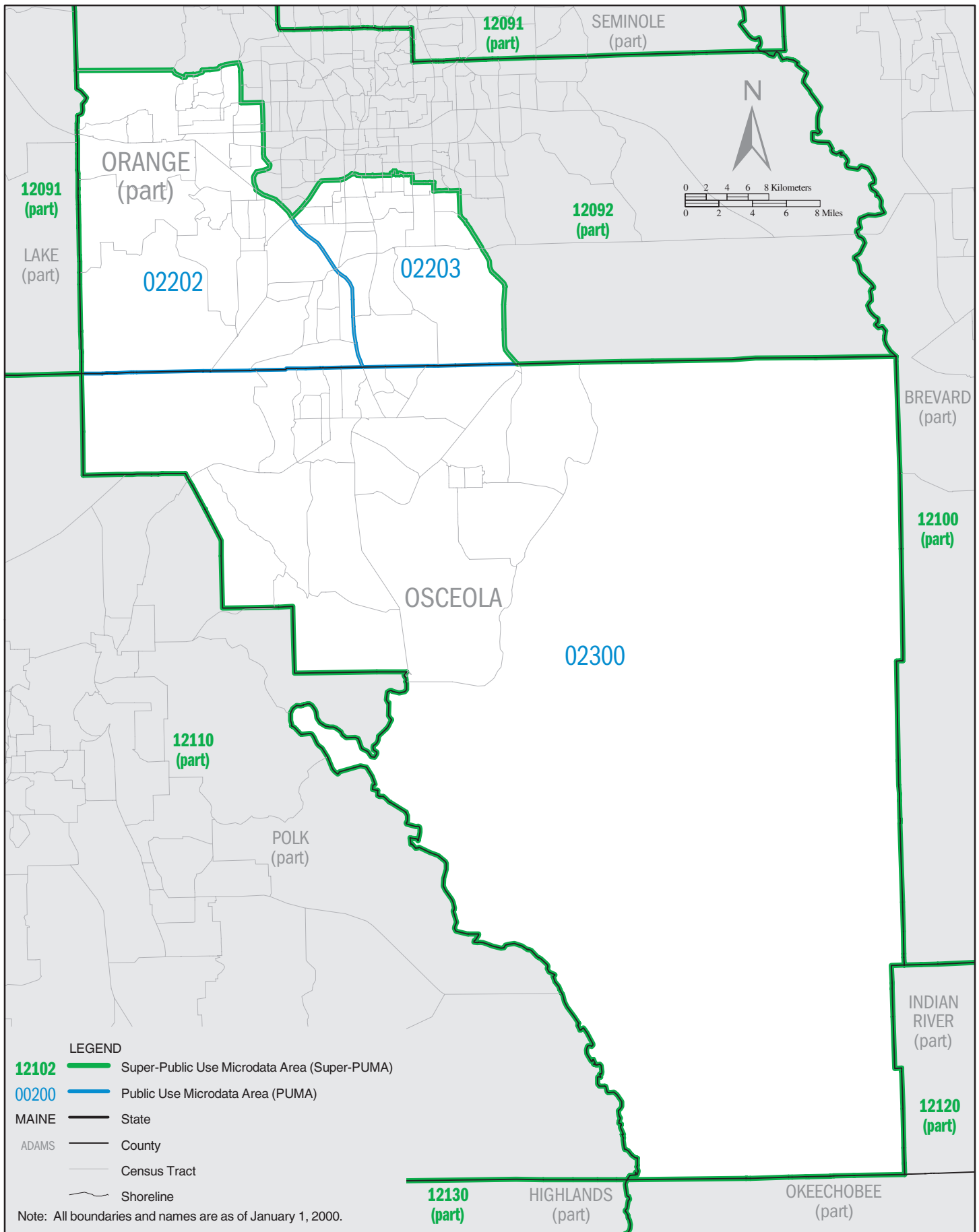
Census Tract

Shoreline

Note: All boundaries and names are as of January 1, 2000.



**FLORIDA Super-PUMA 12093: Census 2000 Public Use Microdata Areas (PUMAs)**

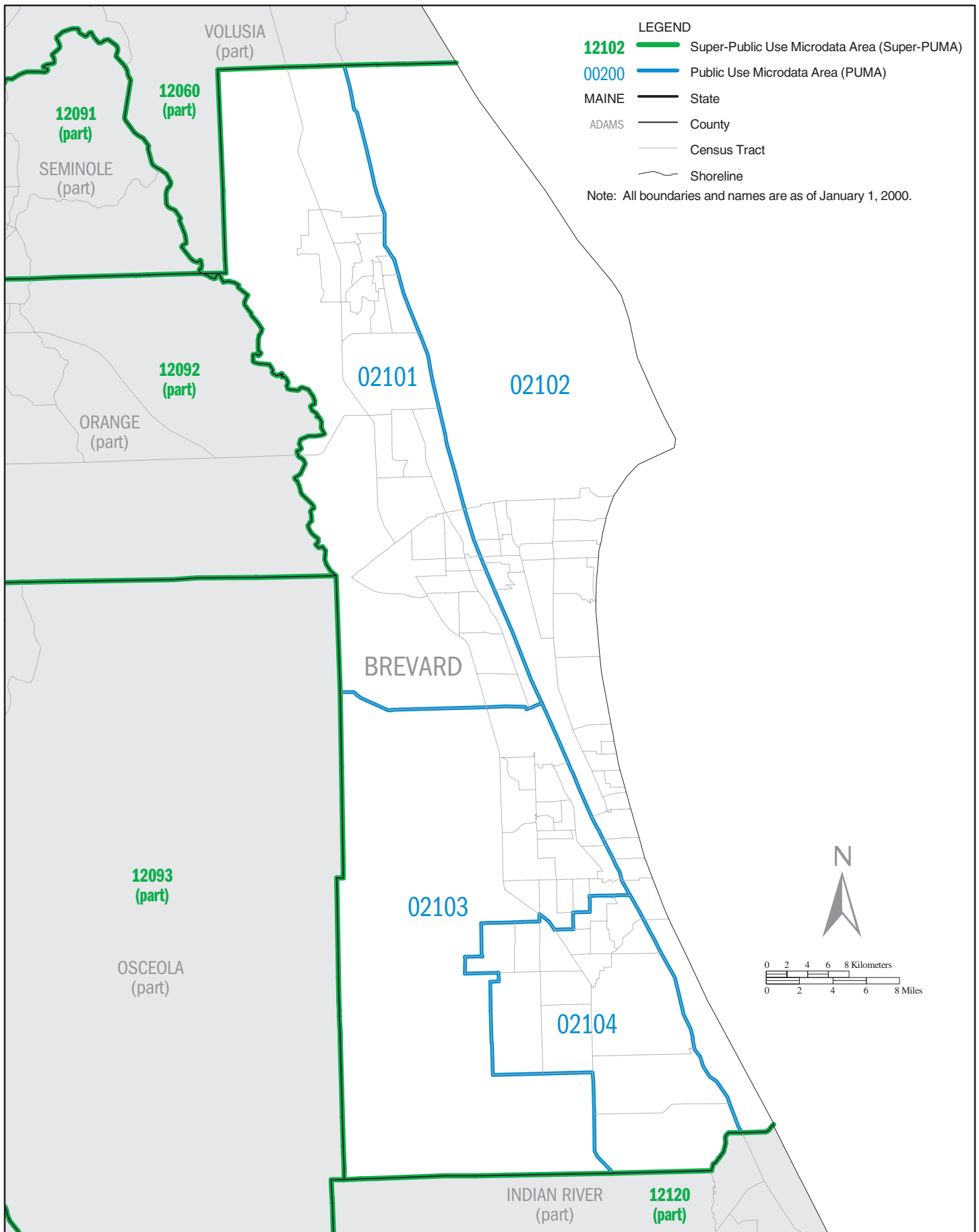


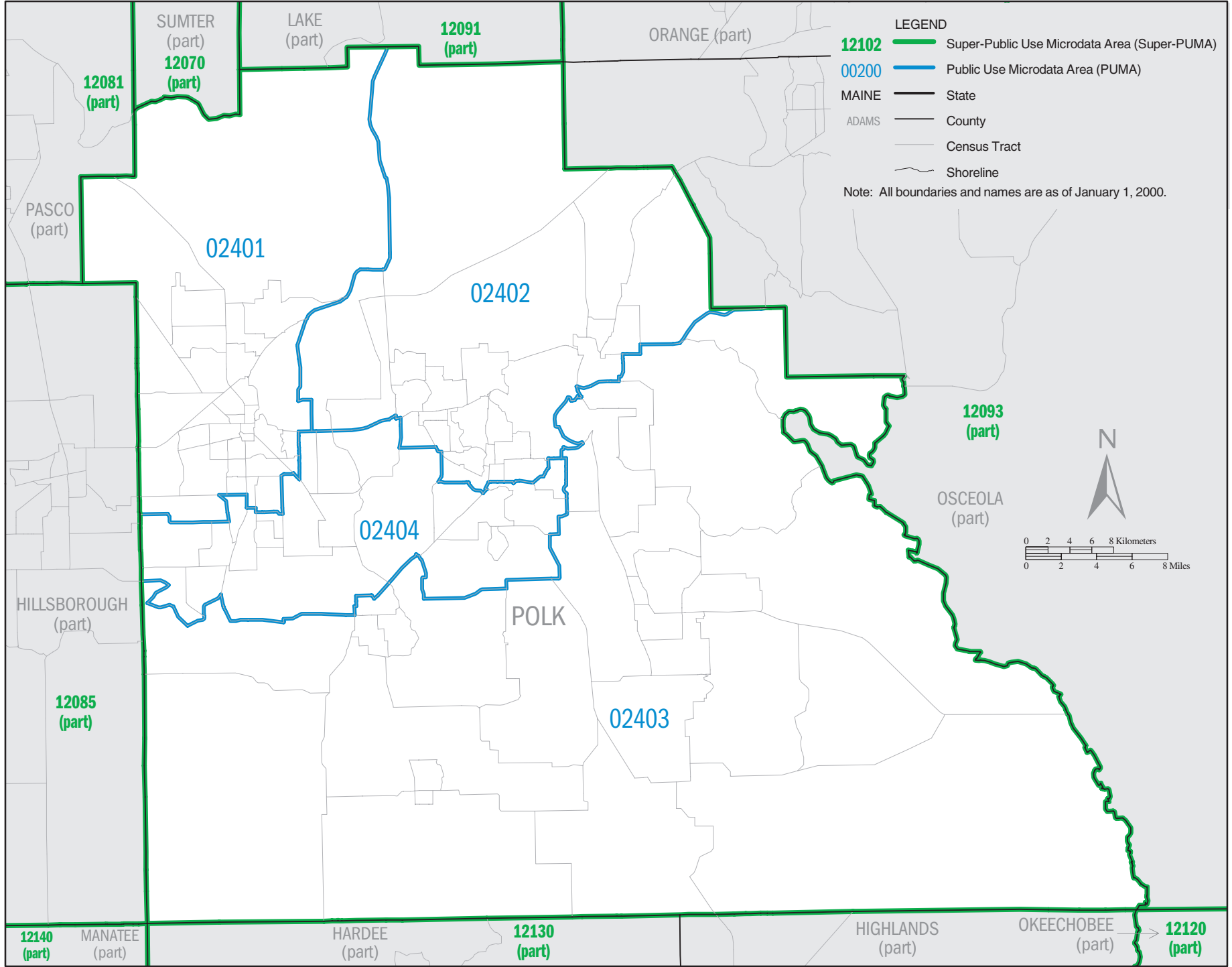
**LEGEND**

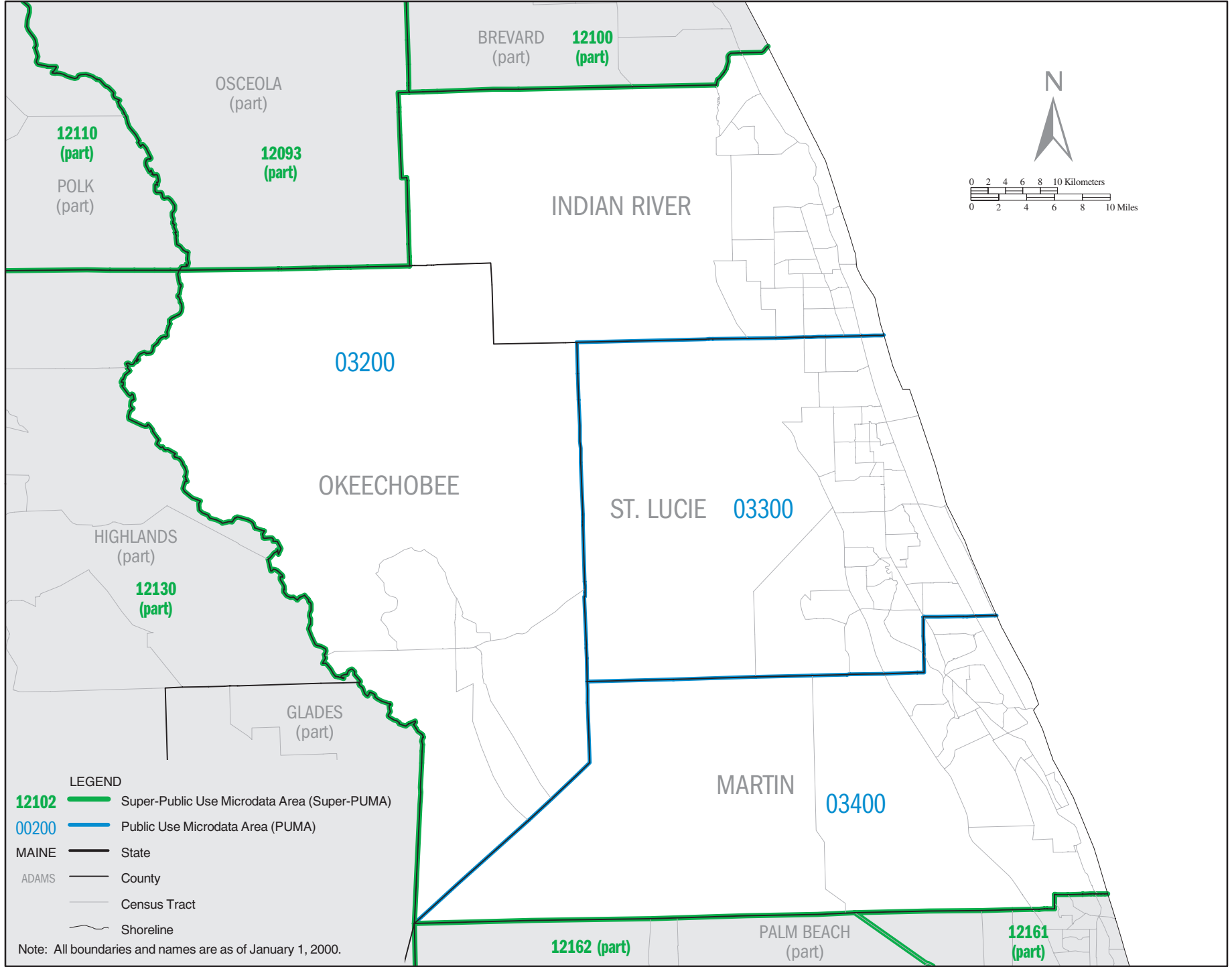
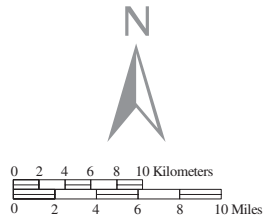
- 12102** — Super-Public Use Microdata Area (Super-PUMA)
- 00200** — Public Use Microdata Area (PUMA)
- MAINE** — State
- ADAMS** — County
- Census Tract
- Shoreline

Note: All boundaries and names are as of January 1, 2000.

**FLORIDA Super-PUMA 12100: Census 2000 Public Use Microdata Areas (PUMAs)**





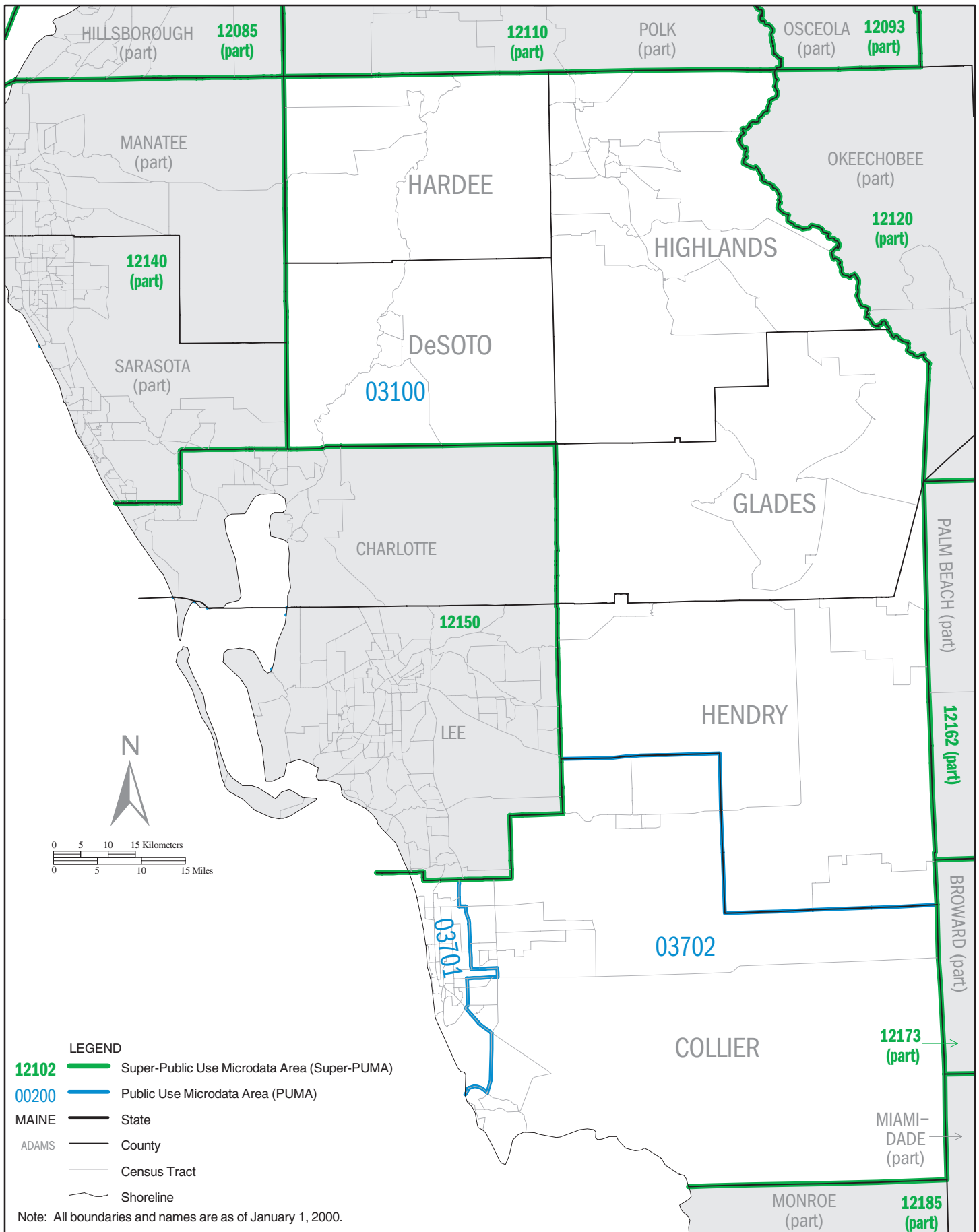


**LEGEND**

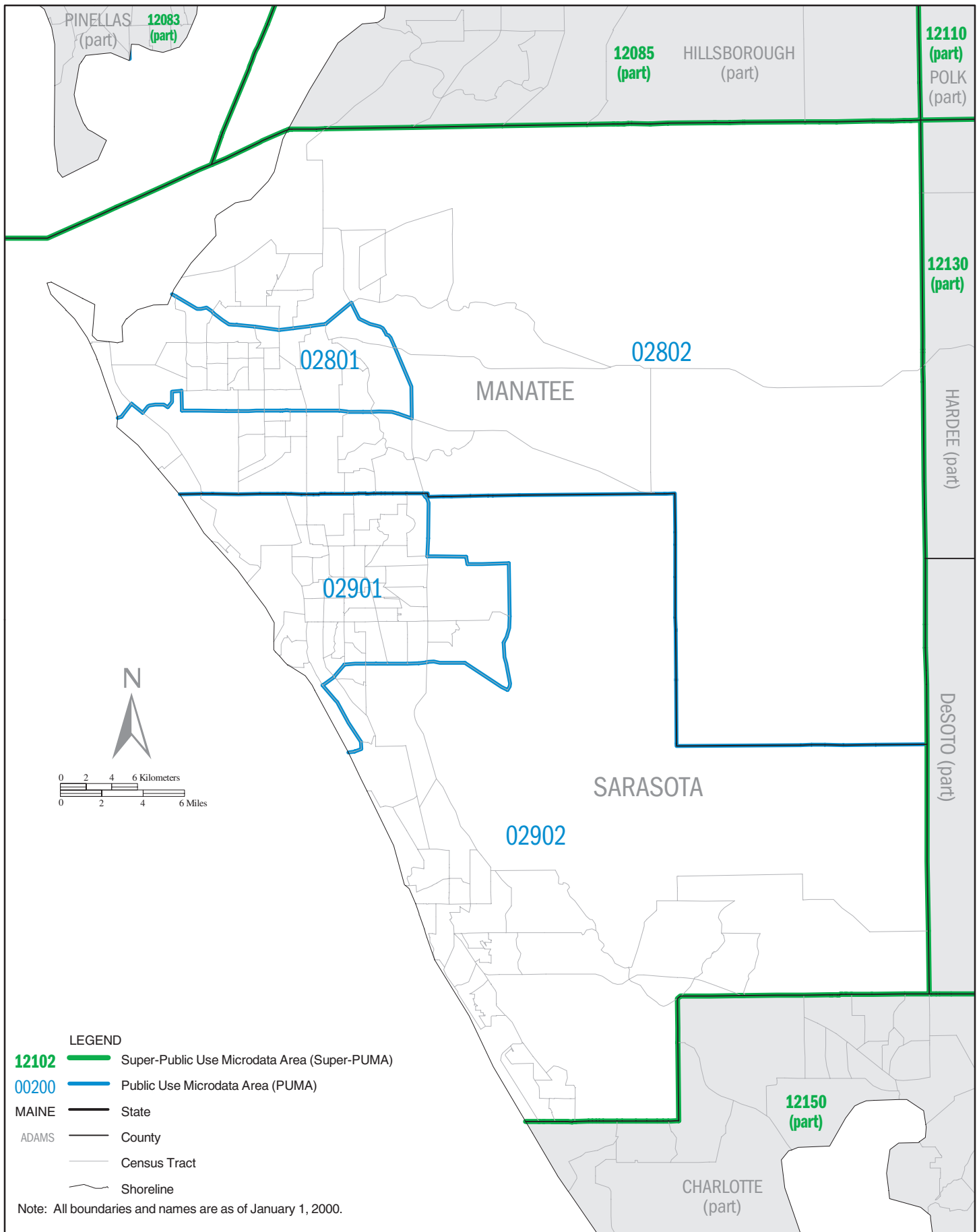
- 12102** Super-Public Use Microdata Area (Super-PUMA)
- 00200** Public Use Microdata Area (PUMA)
- MAINE State
- ADAMS County
- County
- Census Tract
- Shoreline

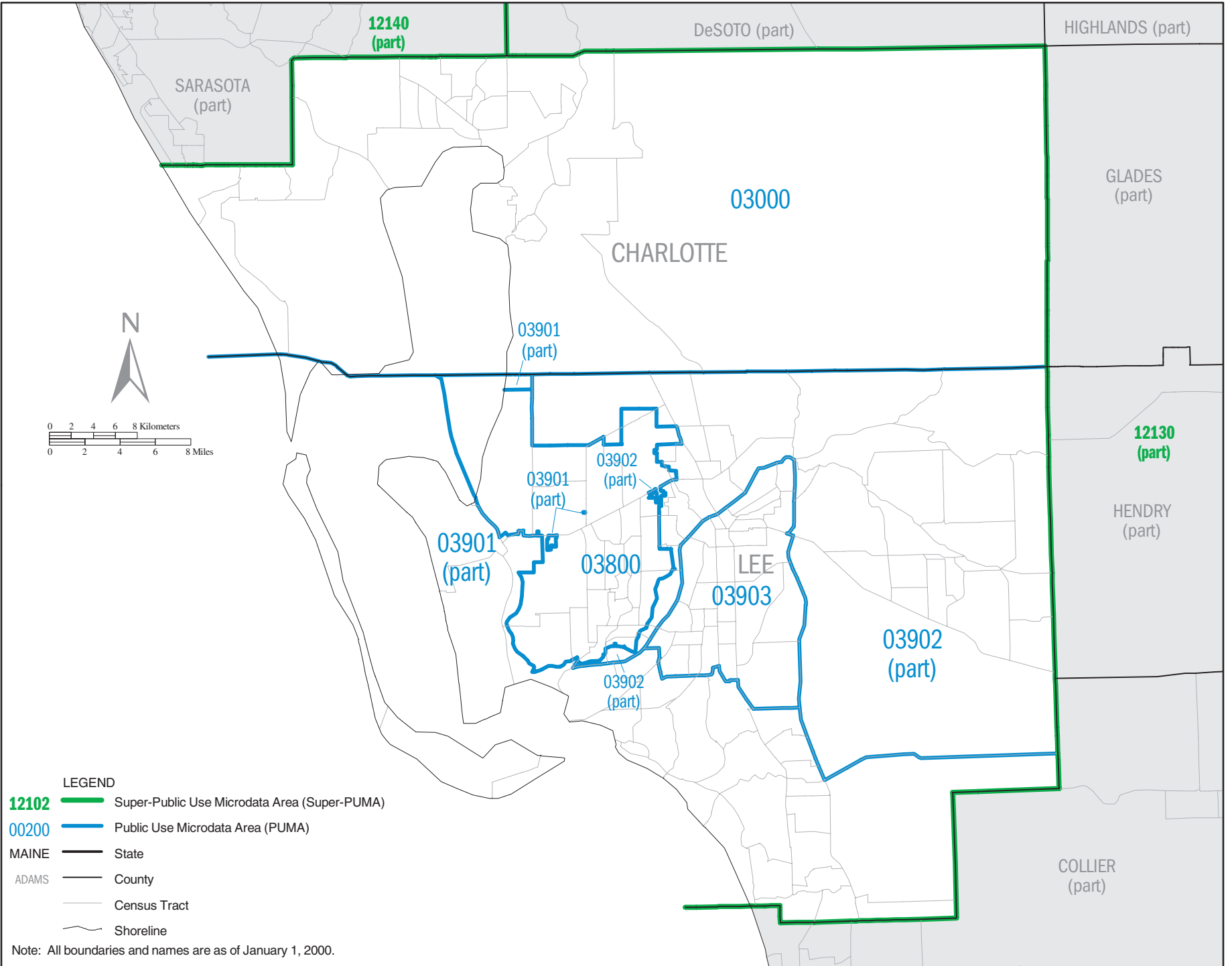
Note: All boundaries and names are as of January 1, 2000.

**FLORIDA Super-PUMA 12130: Census 2000 Public Use Microdata Areas (PUMAs)**

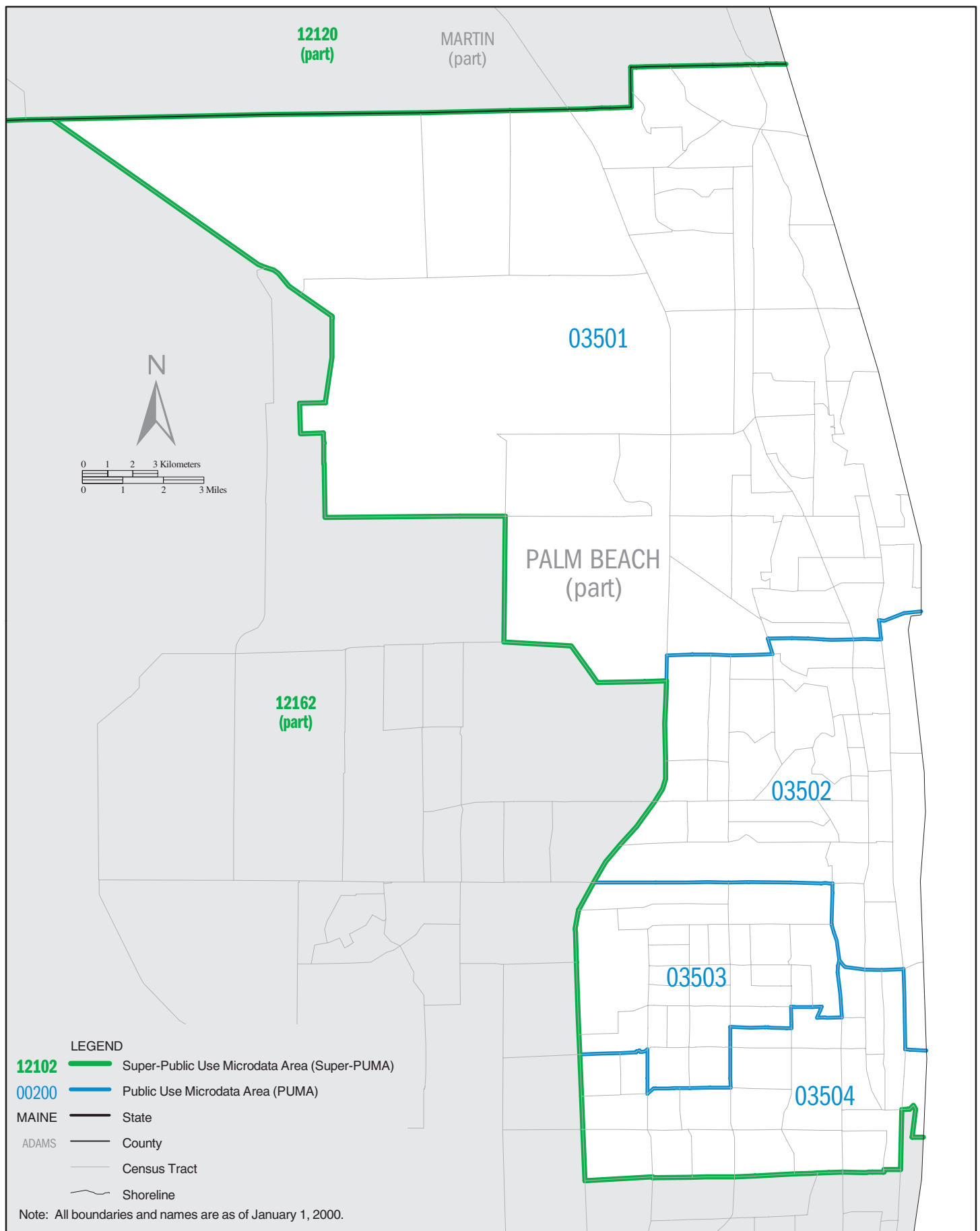


**FLORIDA Super-PUMA 12140: Census 2000 Public Use Microdata Areas (PUMAs)**

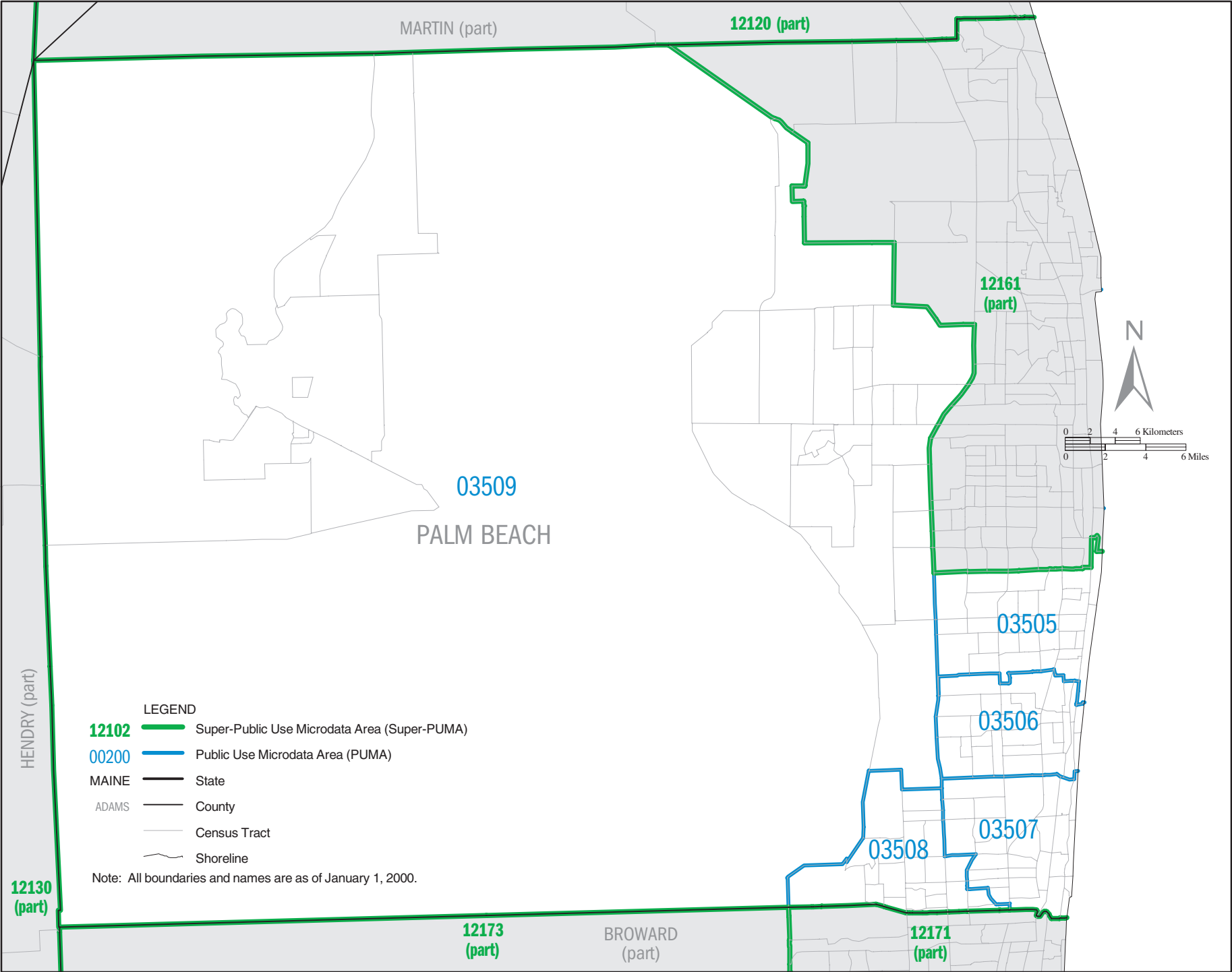


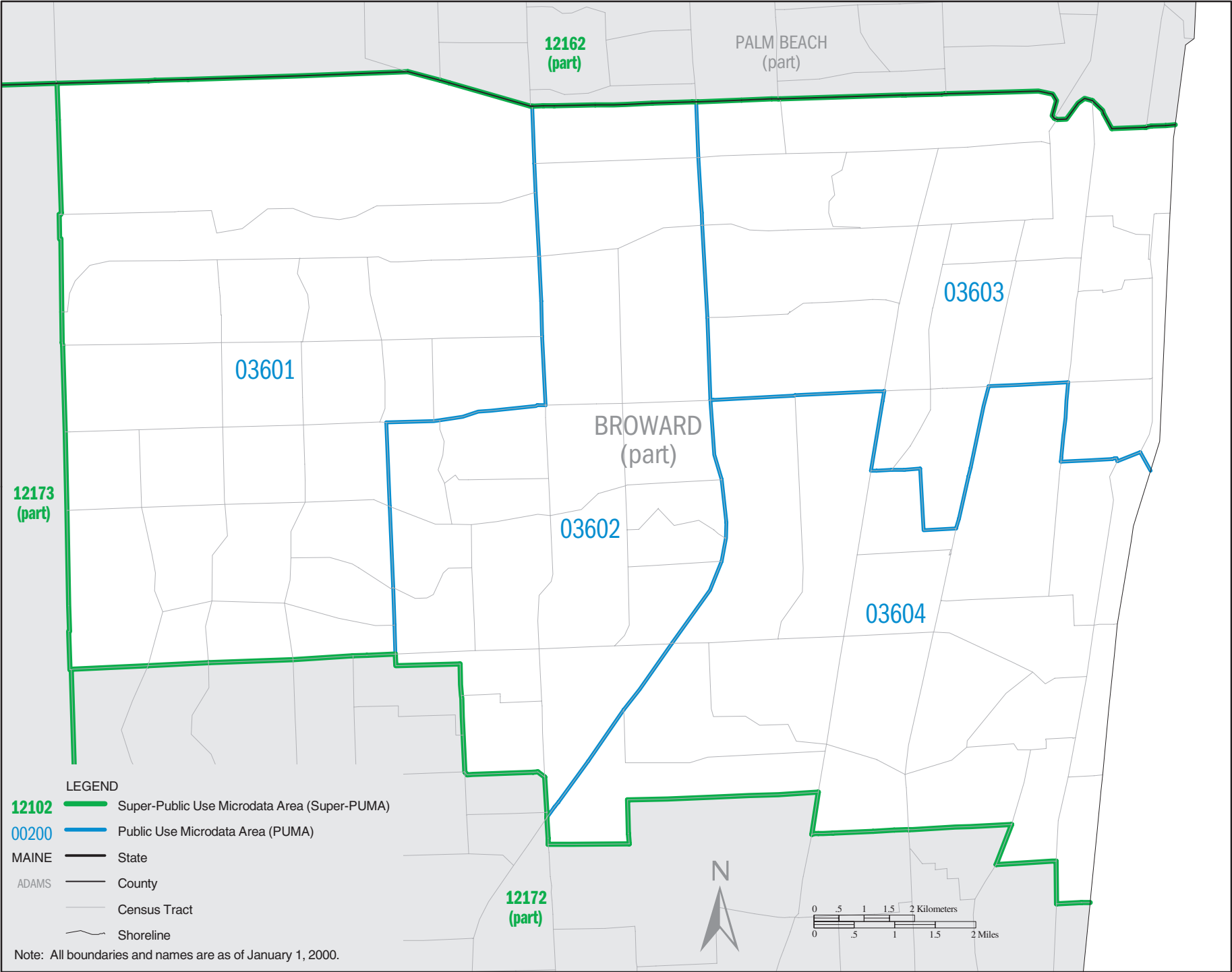


# FLORIDA Super-PUMA 12161: Census 2000 Public Use Microdata Areas (PUMAs)









LEGEND

**12102** Super-Public Use Microdata Area (Super-PUMA)

**00200** Public Use Microdata Area (PUMA)

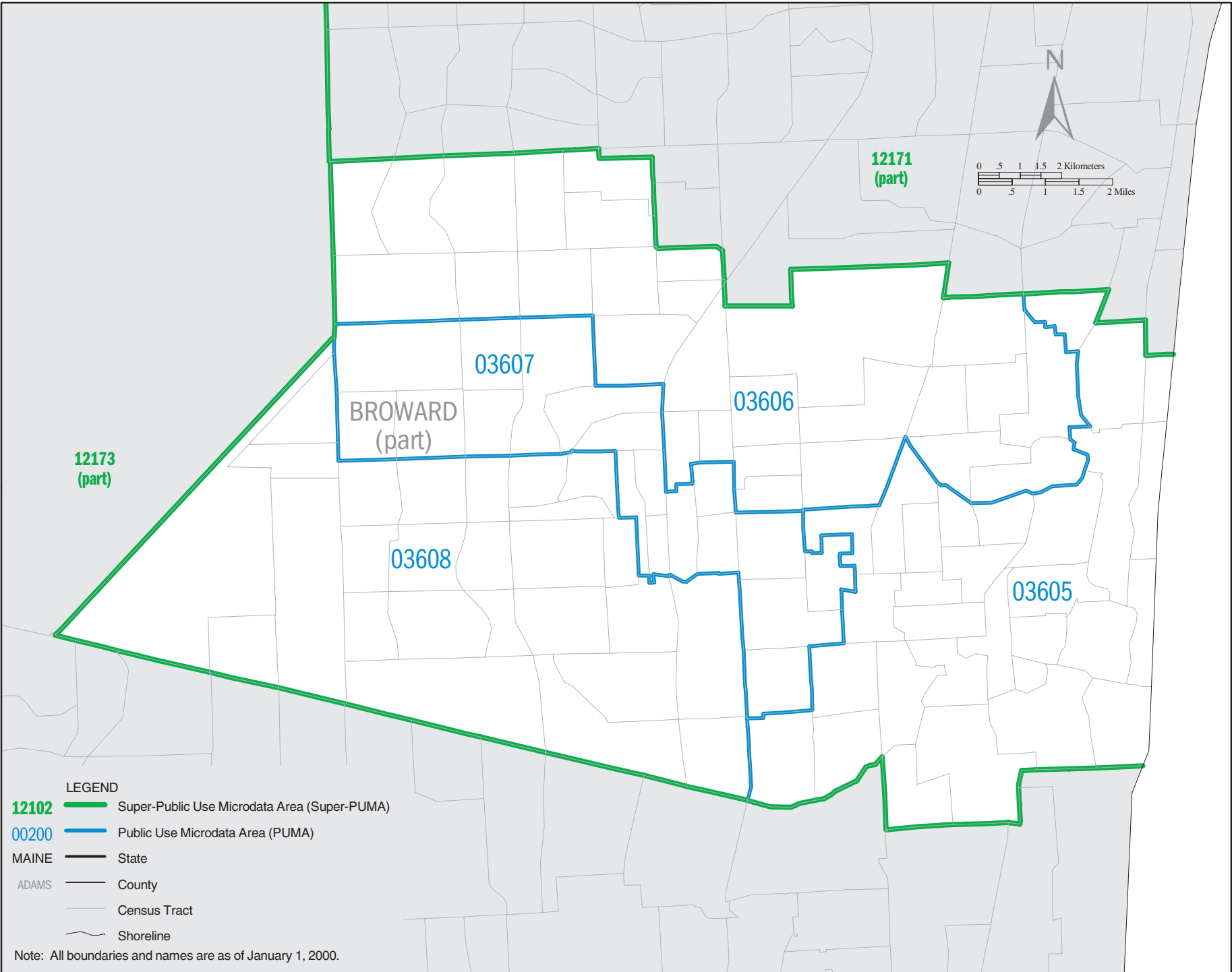
MAINE State

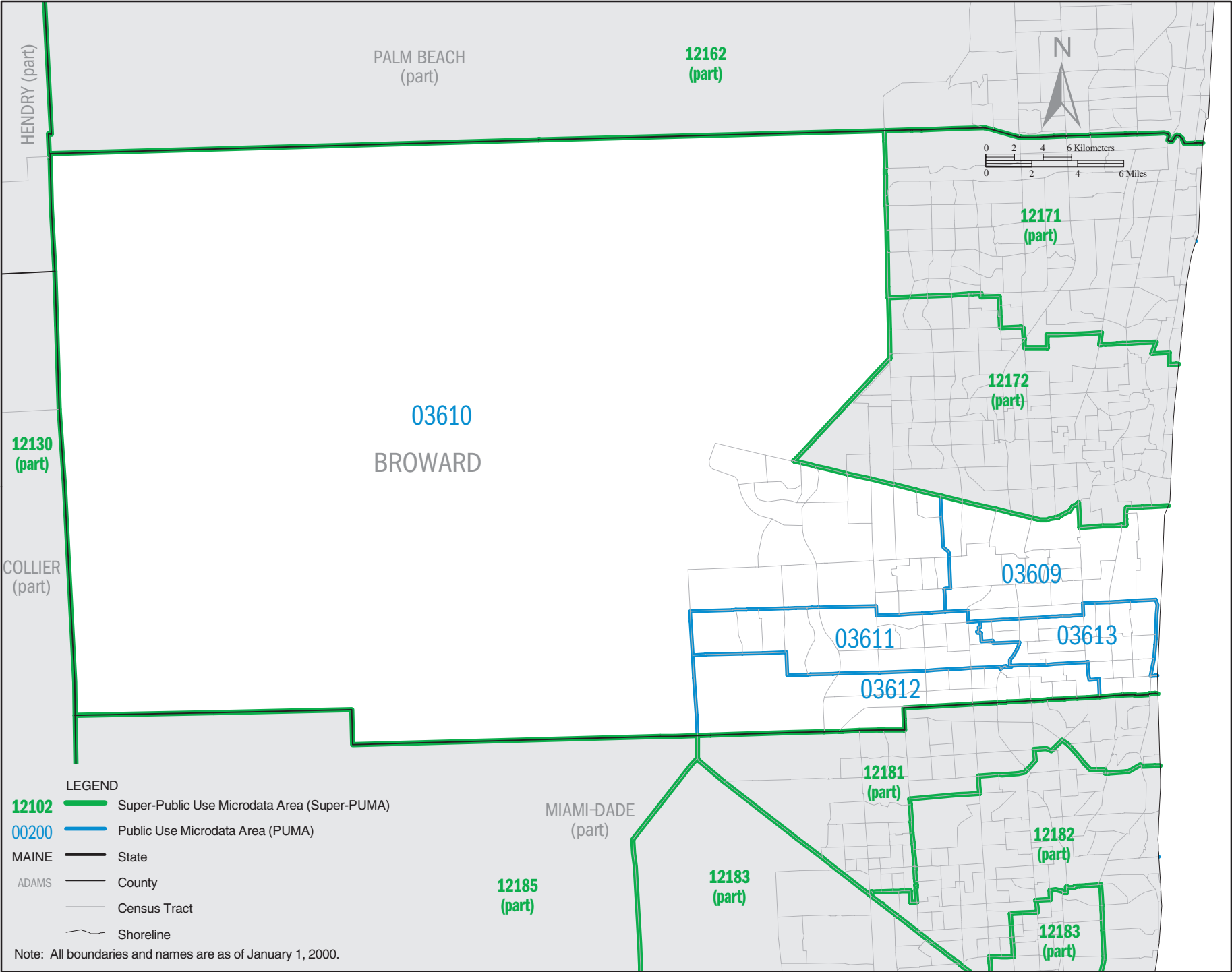
ADAMS County

Census Tract

Shoreline

Note: All boundaries and names are as of January 1, 2000.

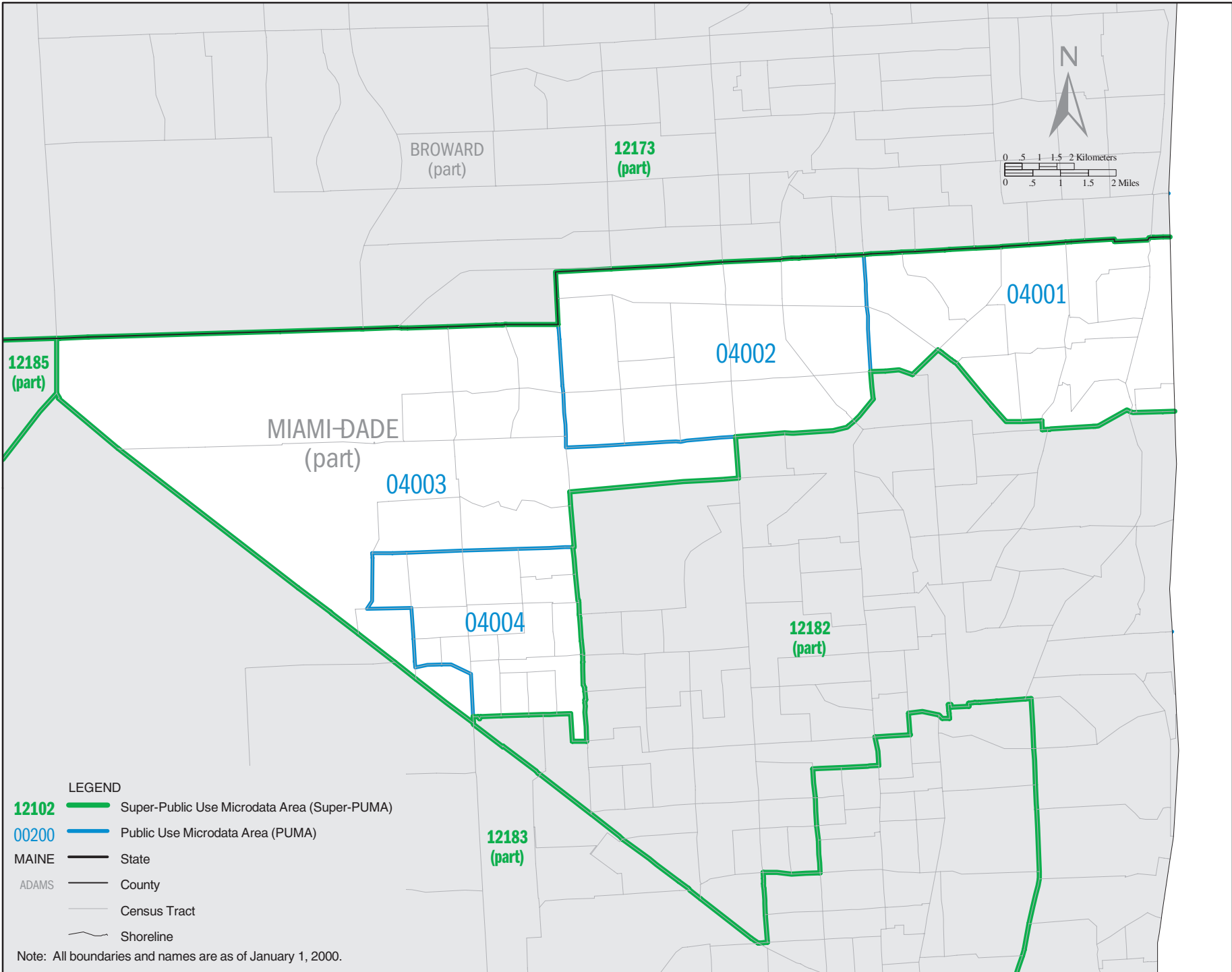




LEGEND

- 12102 Super-Public Use Microdata Area (Super-PUMA)
- 00200 Public Use Microdata Area (PUMA)
- MAINE State
- ADAMS County
- Census Tract
- Shoreline

Note: All boundaries and names are as of January 1, 2000.



- LEGEND
- 12102** Super-Public Use Microdata Area (Super-PUMA)
  - 00200** Public Use Microdata Area (PUMA)
  - MAINE State
  - ADAMS County
  - Census Tract
  - Shoreline

Note: All boundaries and names are as of January 1, 2000.

**FLORIDA Super-PUMA 12182: Census 2000 Public Use Microdata Areas (PUMAs)**

