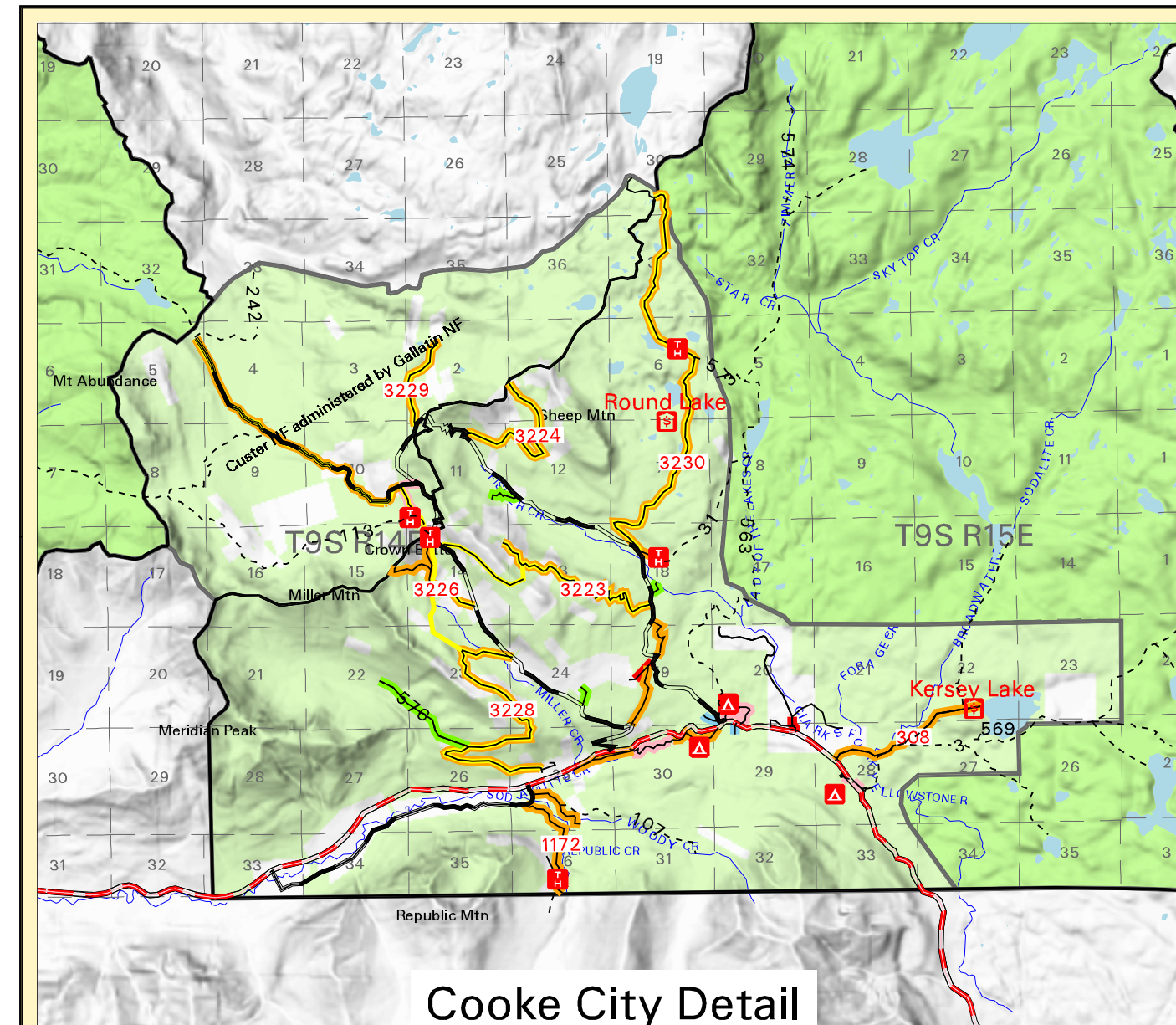
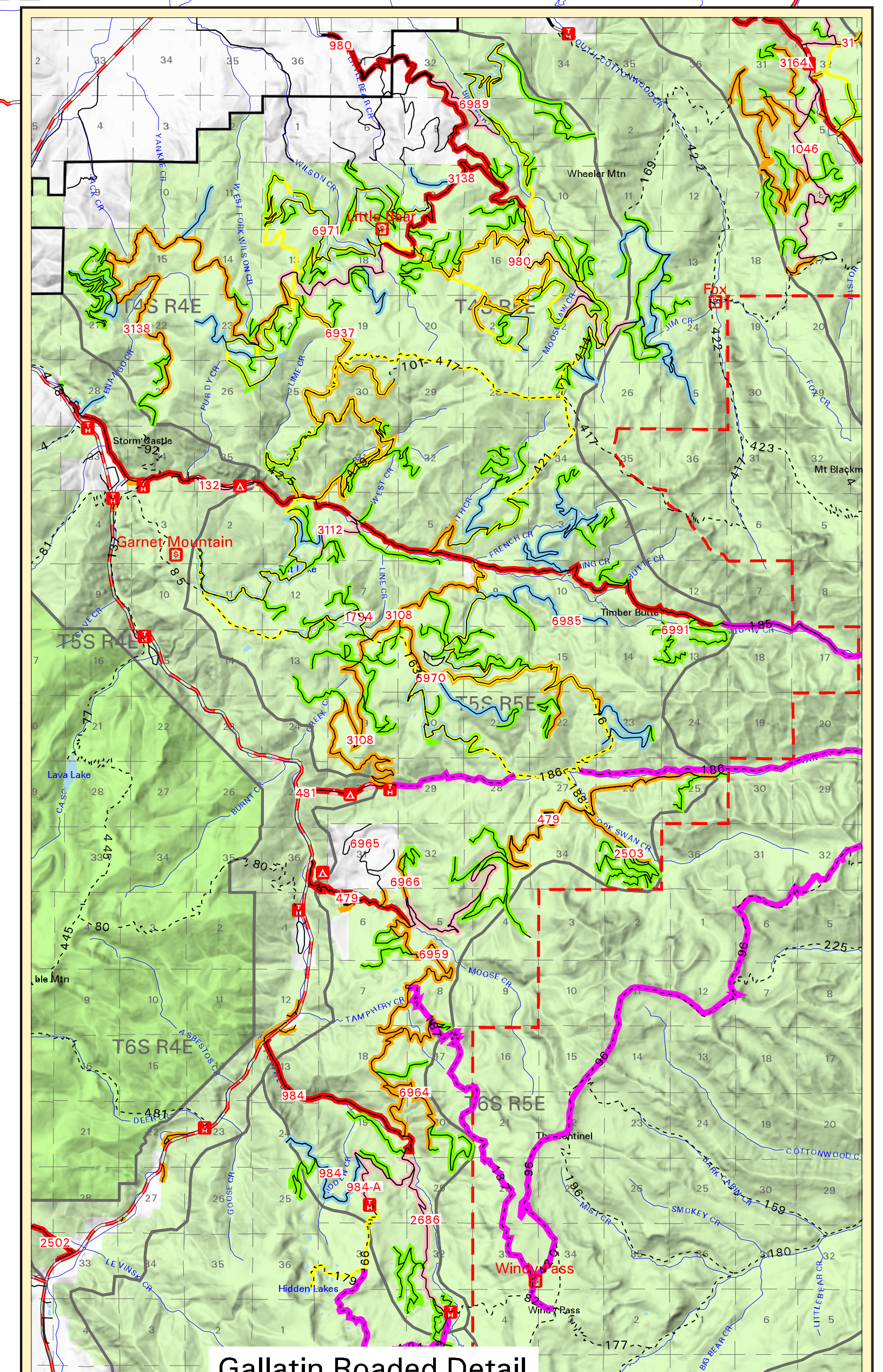
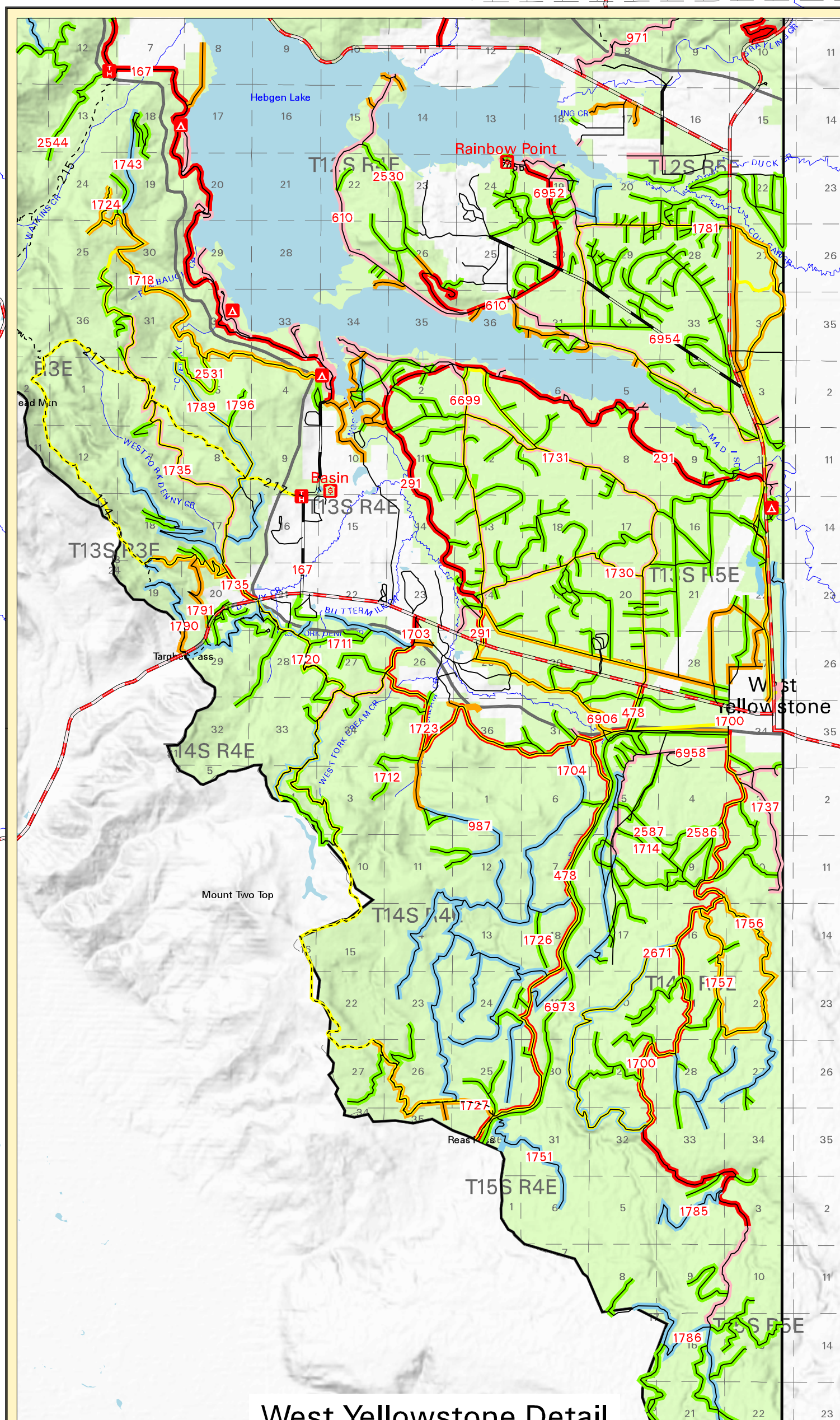
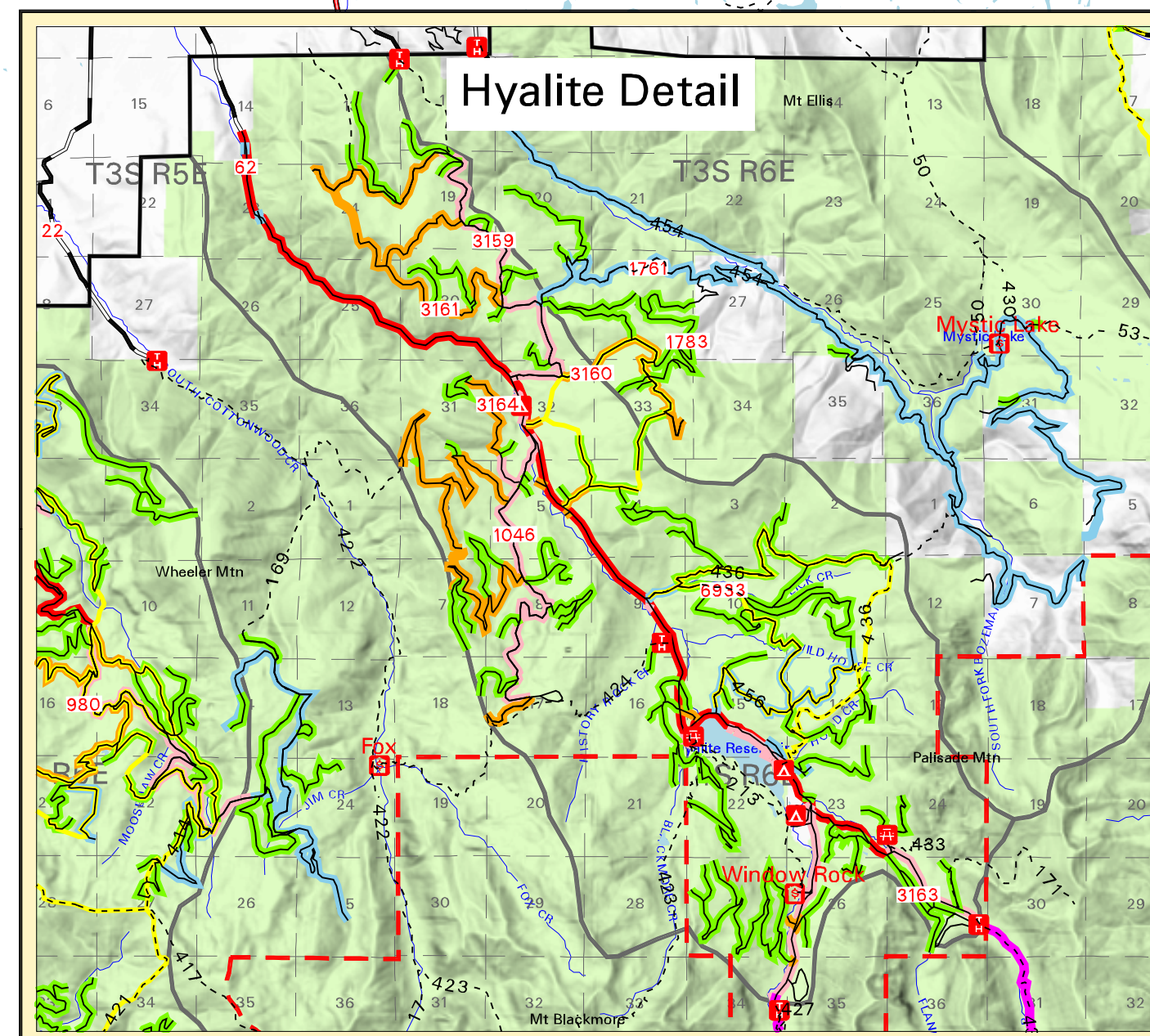
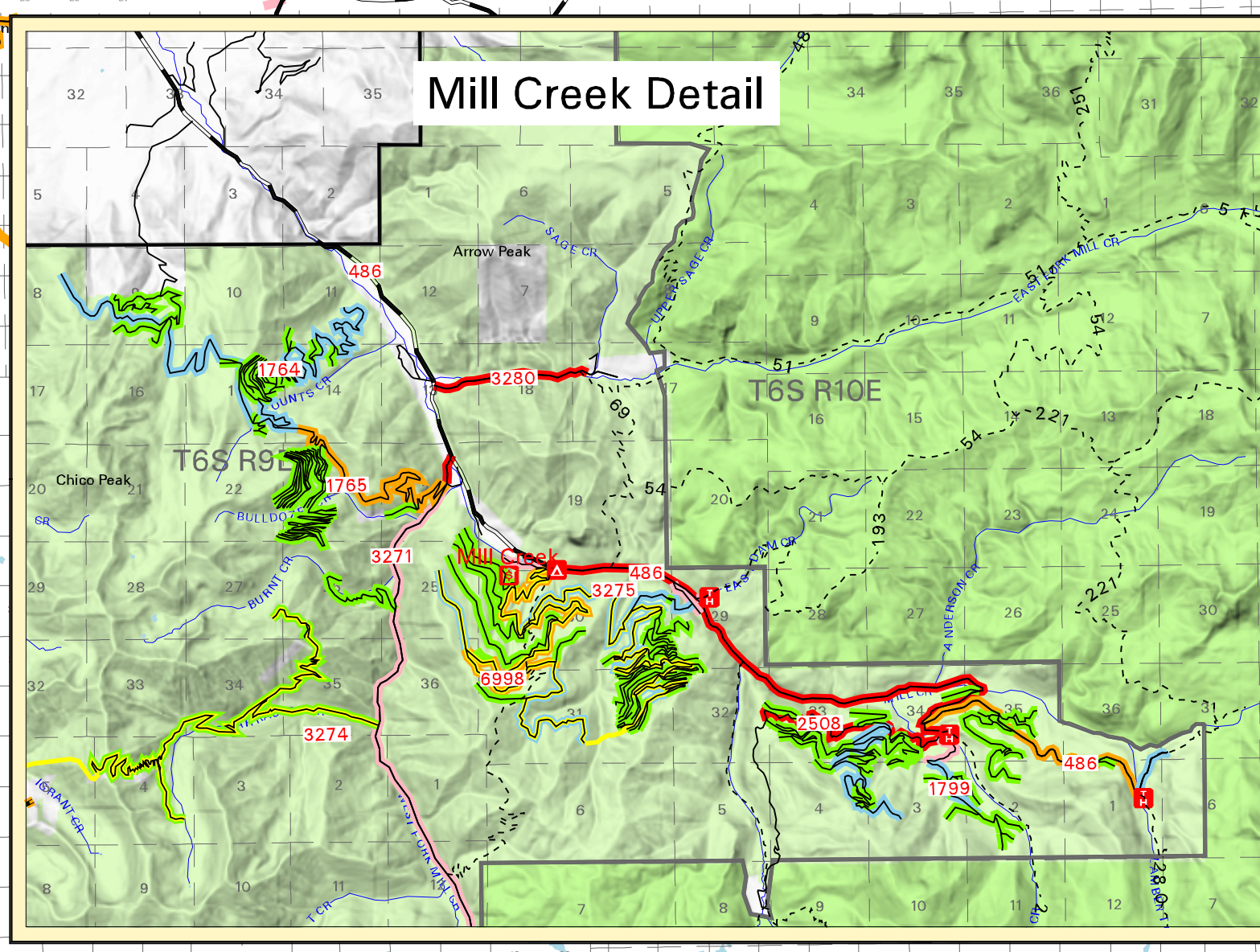
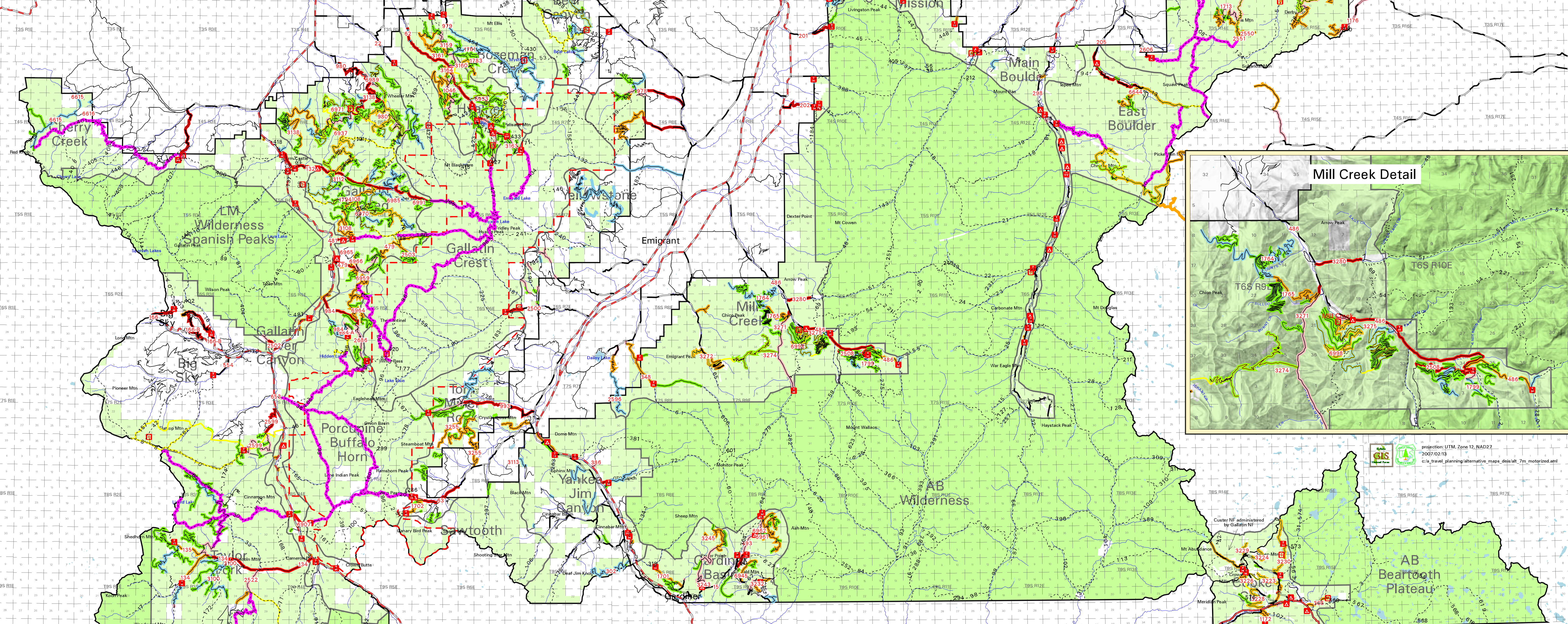


**TRAVEL PLANNING
GALLATIN NATIONAL FOREST
SUMMER MOTORIZED
ALTERNATIVE SEVEN - MODIFIED**



REMEMBER TO REVIEW ALL THREE MAPS FOR THE COMPLETE PICTURE OF EACH ALTERNATIVE.

- Highway - US or State
- Access to Forest Road
- Road
- National Forest System Trail
- Forest Service Campground
- Forest Service Trailhead
- Forest Service Picnic Area
- Forest Service Cabin
- Travel Planning Area Boundary
- Gallatin National Forest Boundary
- Wilderness Study Area Boundary
- Managed for Motorcycle and ATV Use
- Managed for Motorcycle (ATV Use Prohibited)
- Managed for Passenger Car Use (Nominated for Public Forest Service Road)
- Managed for Passenger Car Use with Motorcycle and ATV Use (Nominated for PFSR)
- Managed for Passenger Car Use
- Managed for Passenger Car Use and Motorcycle and ATV Use
- Managed for Backcountry Road Use (not suitable for passenger cars)
- Managed for Backcountry Road Use (not suitable for passenger cars) and Motorcycle and ATV Use
- Managed for Administrative Use (public motorized use prohibited)
- Managed for Administrative Use and Motorcycle and ATV Use (public motorized use limited to trail vehicles)
- Managed for Project Use (public motorized use prohibited)
- Managed for Project Use and Motorcycle and ATV Use (public motorized use limited to trail vehicles)
- National Forest System Land
- NFS Land - Wilderness (motorized and mechanized travel prohibited year round)

Scale - Main Map: 0 10 miles 20 miles
Scale - Detail Maps: 0 5 miles