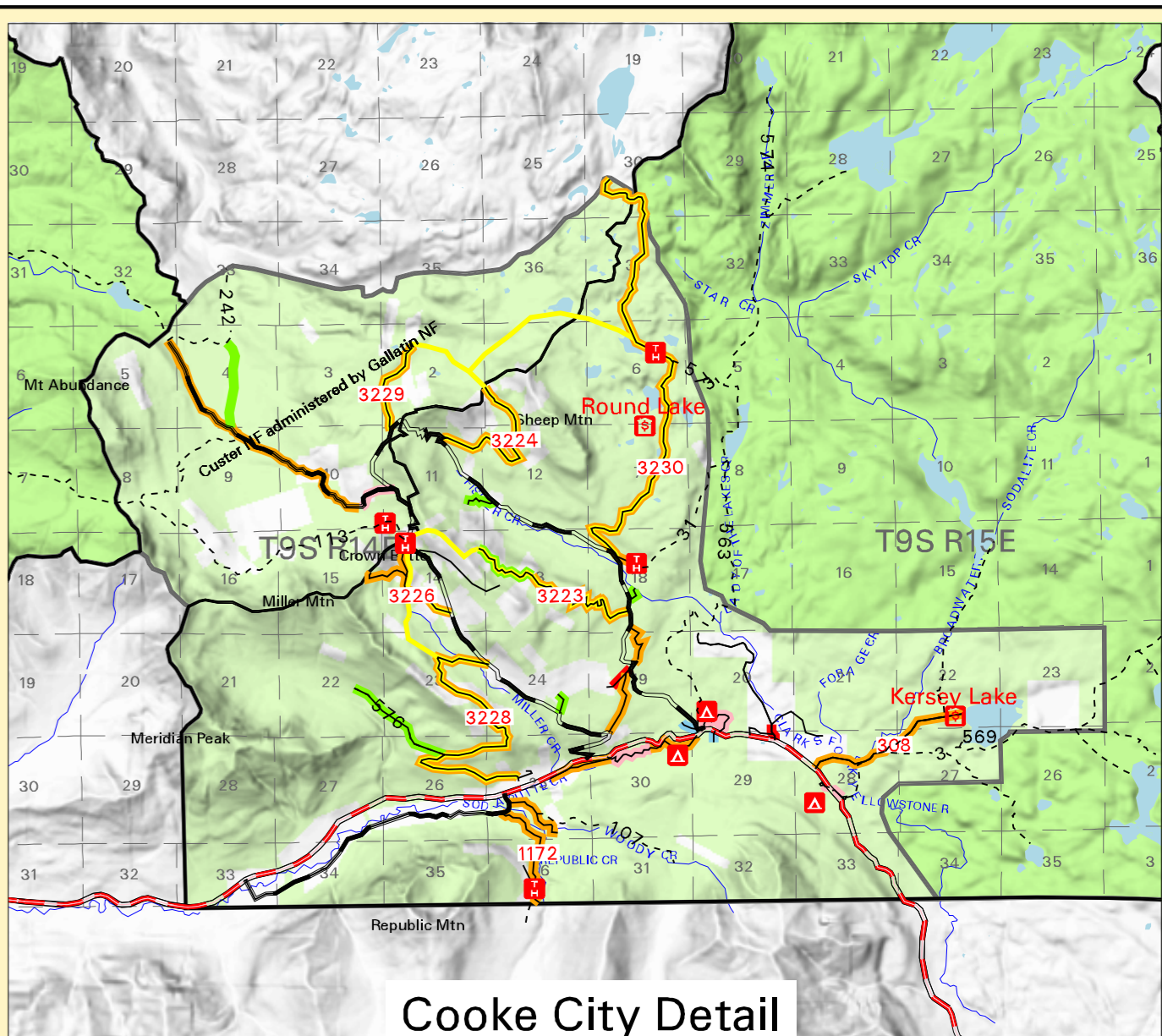
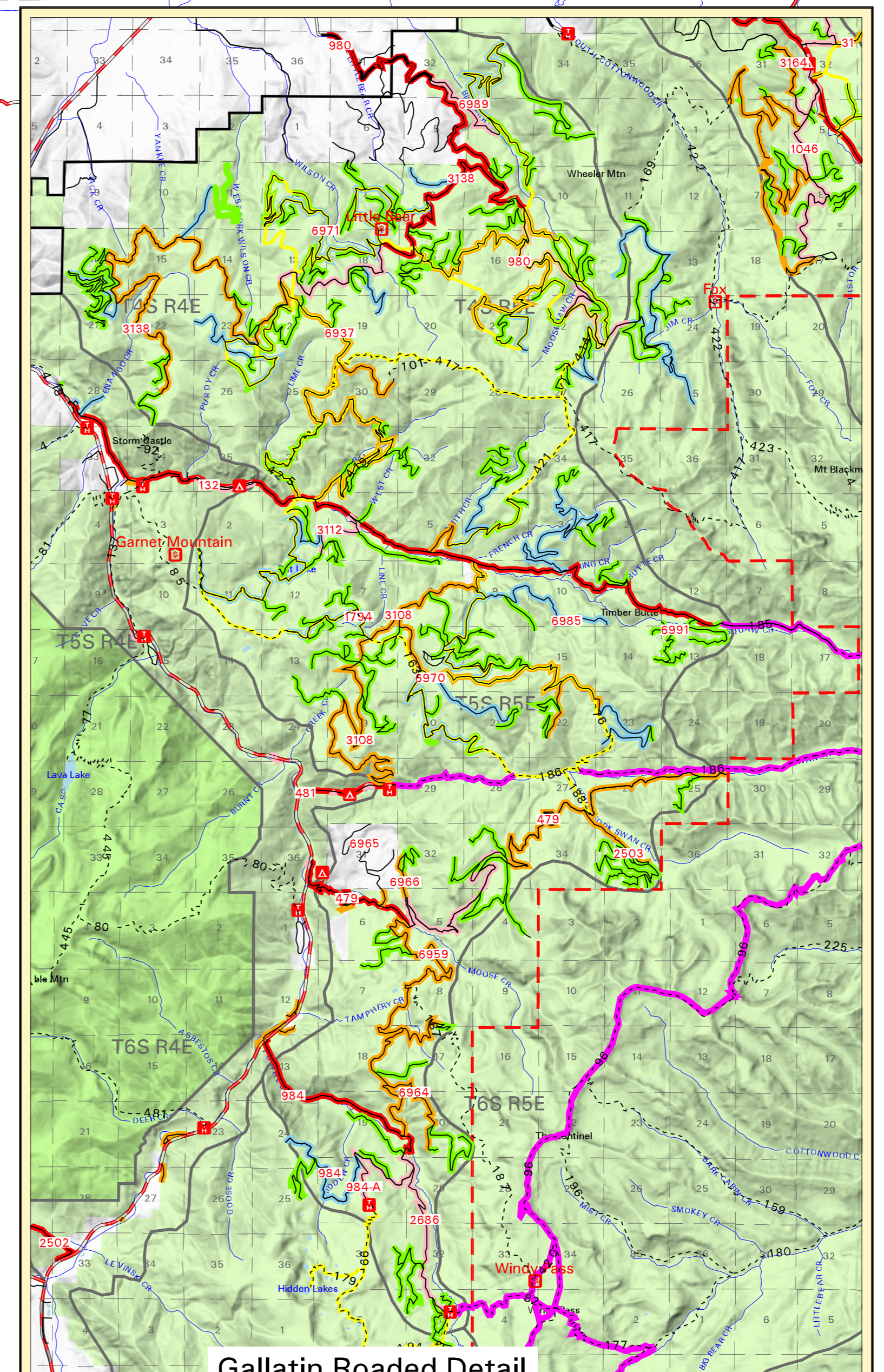
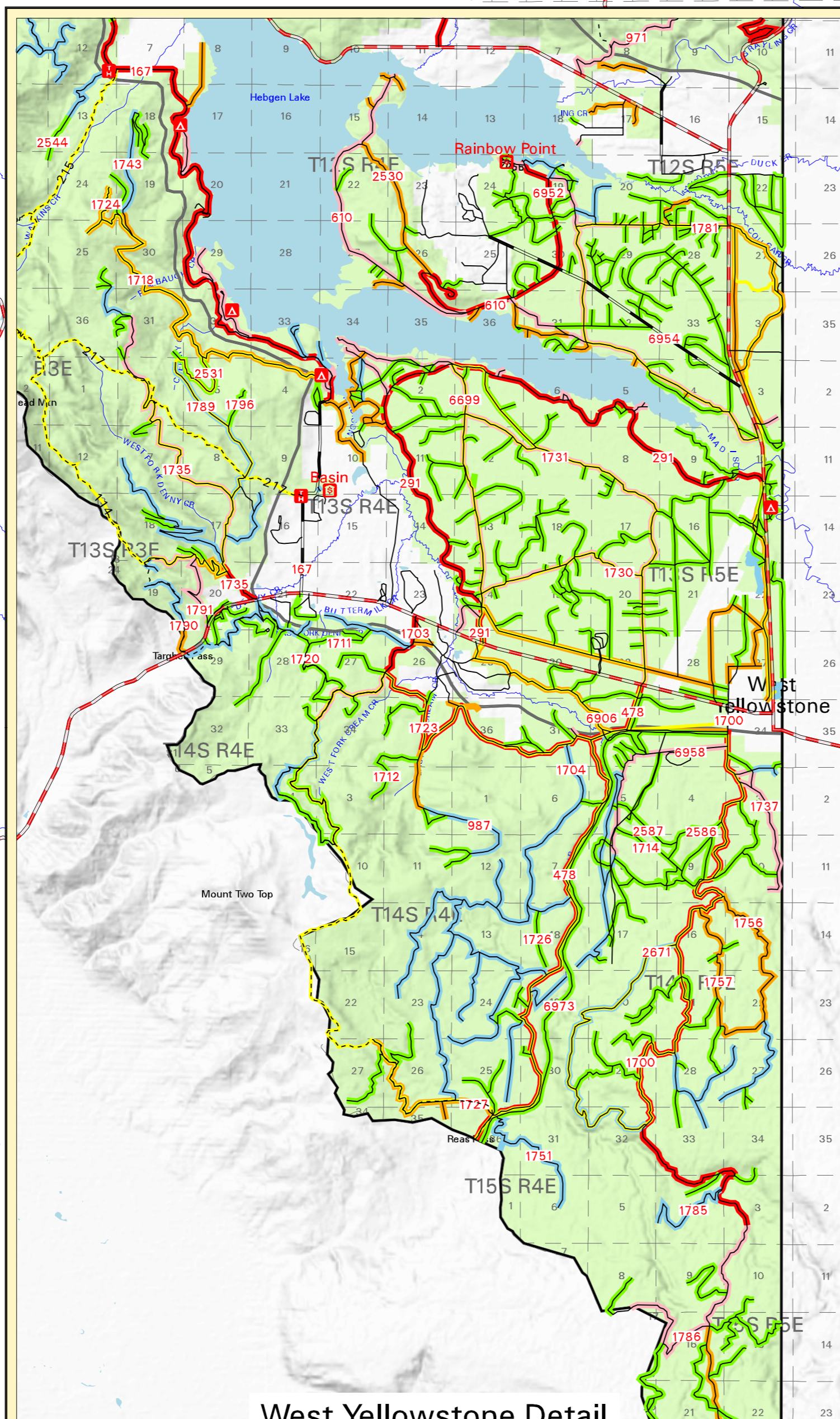
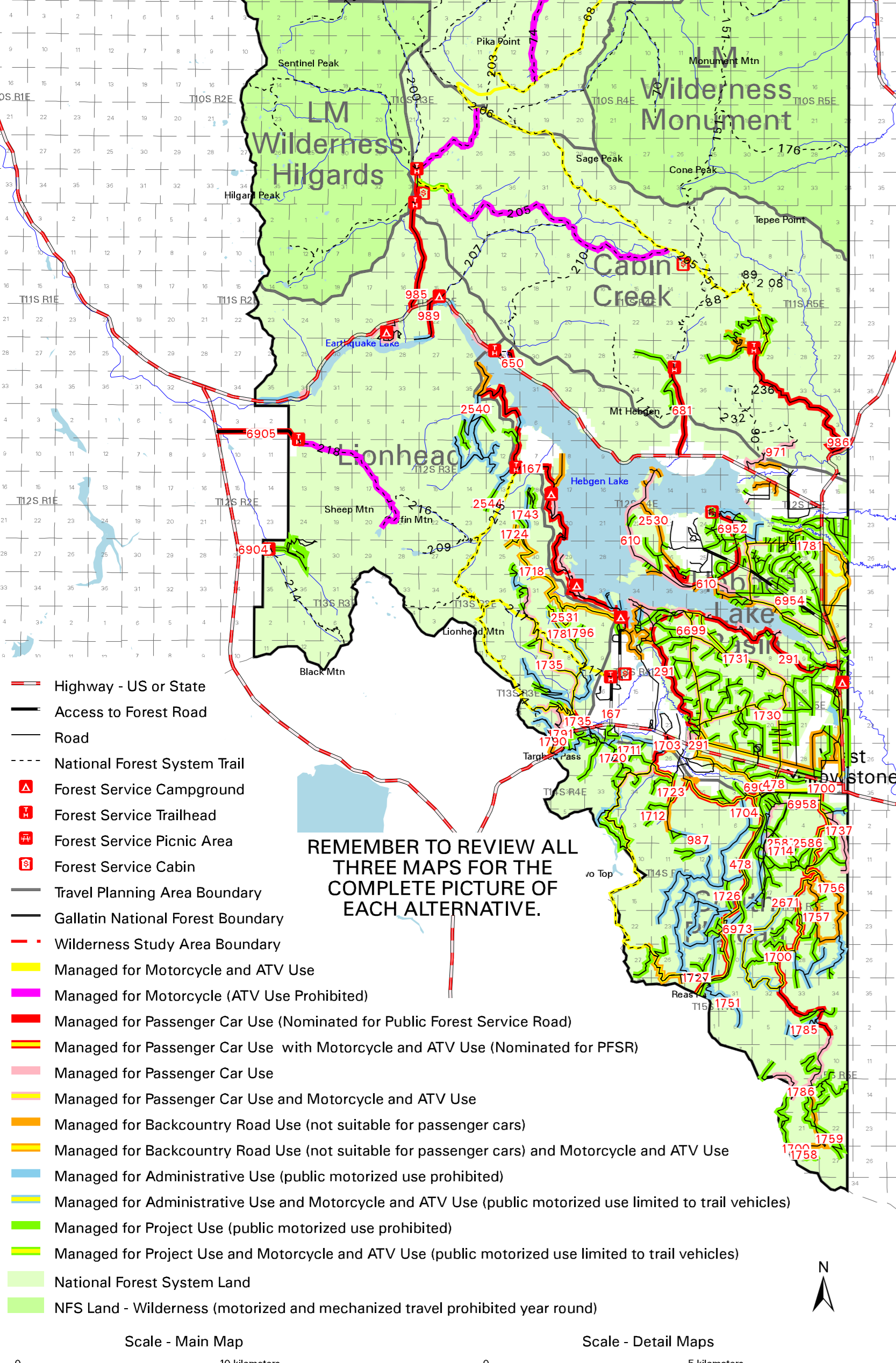
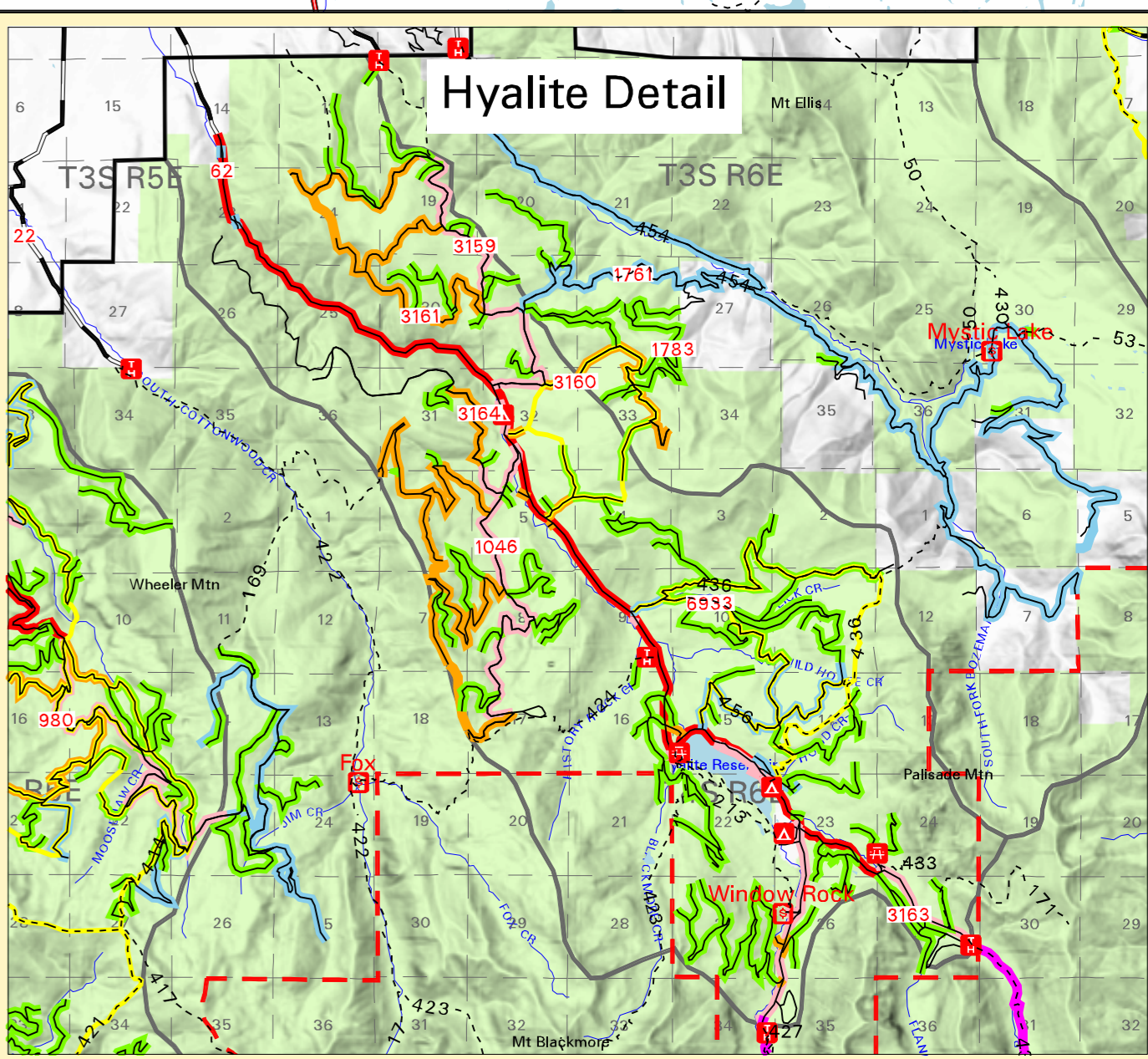
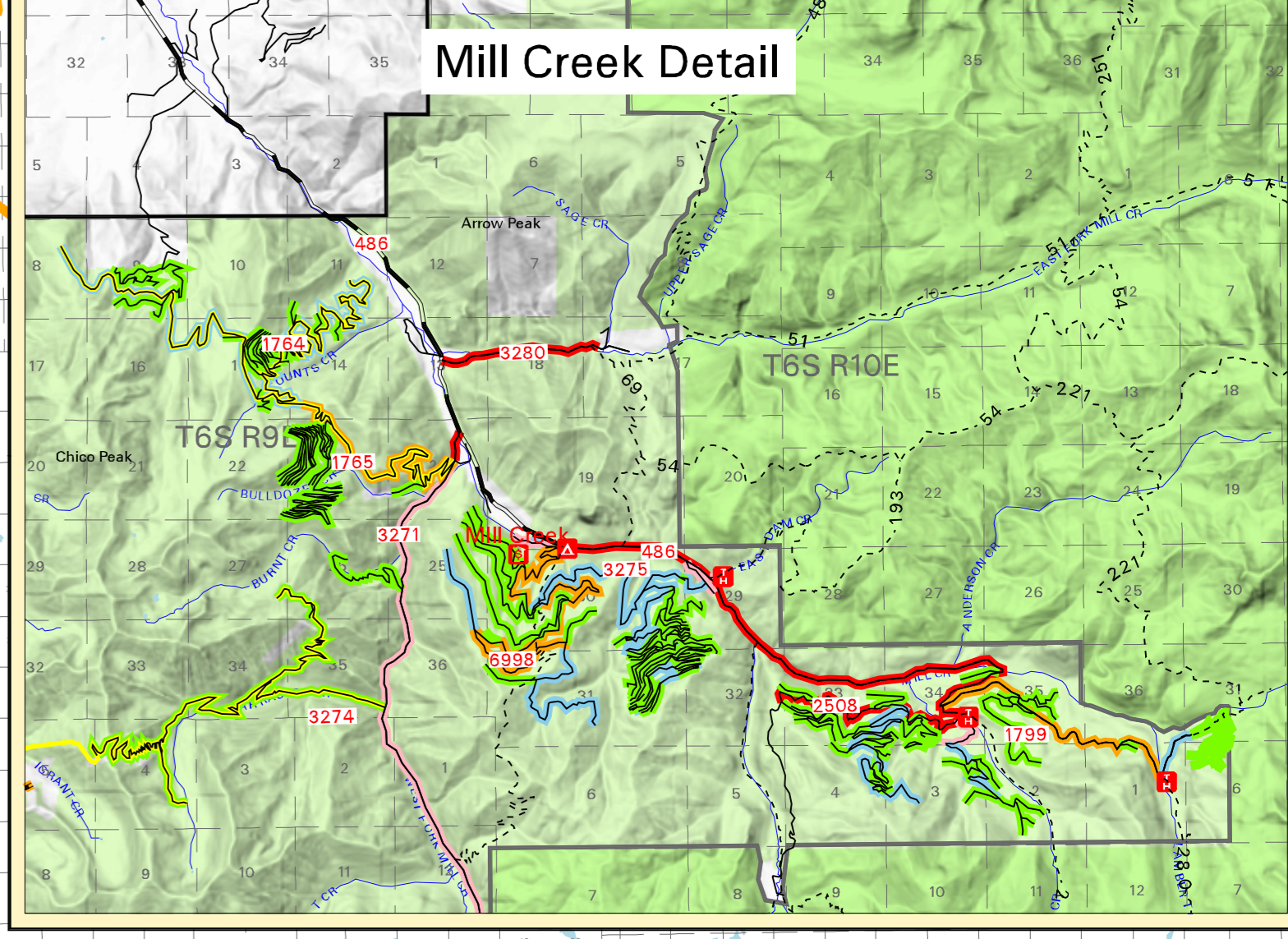
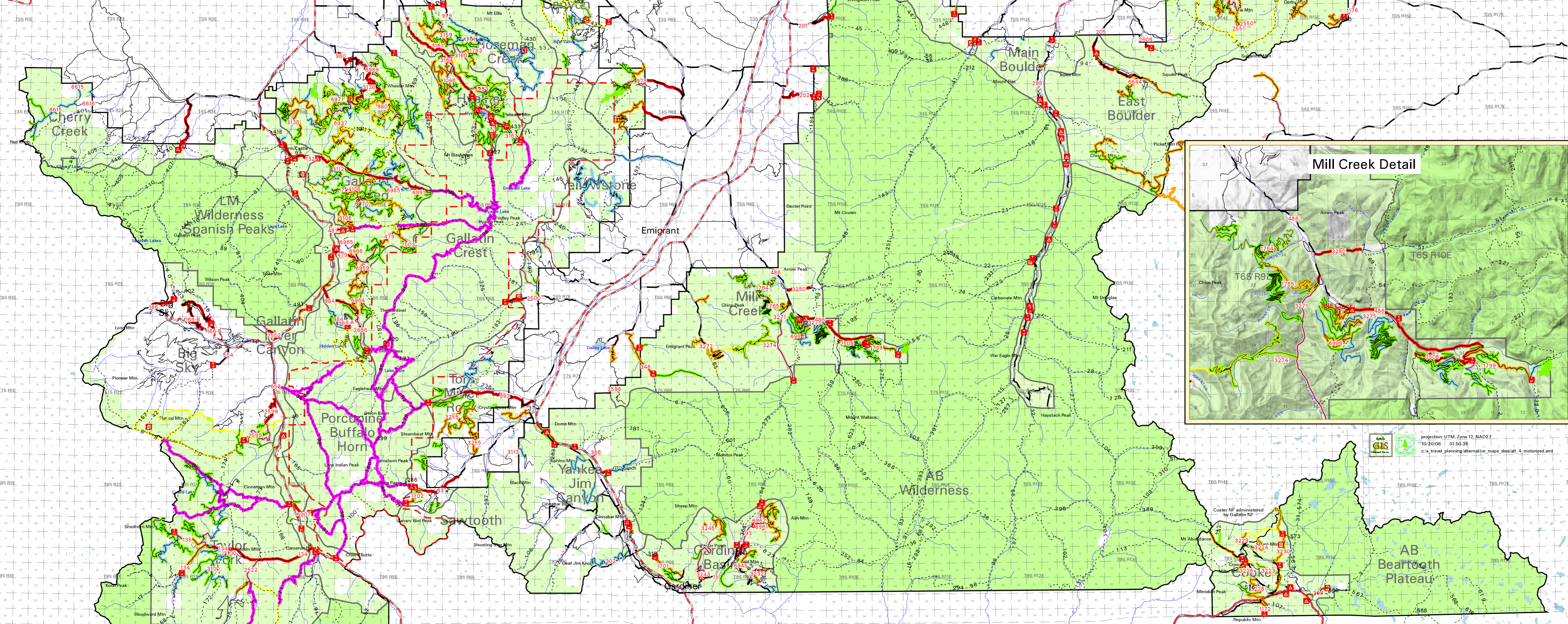


**TRAVEL PLANNING
GALLATIN NATIONAL FOREST
SUMMER MOTORIZED
ALTERNATIVE FOUR**



- REMEMBER TO REVIEW ALL THREE MAPS FOR THE COMPLETE PICTURE OF EACH ALTERNATIVE.**
- Highway - US or State
 - Access to Forest Road
 - Road
 - National Forest System Trail
 - Forest Service Campground
 - Forest Service Trailhead
 - Forest Service Picnic Area
 - Forest Service Cabin
 - Travel Planning Area Boundary
 - Gallatin National Forest Boundary
 - Wilderness Study Area Boundary
 - Managed for Motorcycle and ATV Use
 - Managed for Motorcycle (ATV Use Prohibited)
 - Managed for Passenger Car Use (Nominated for Public Forest Service Road)
 - Managed for Passenger Car Use with Motorcycle and ATV Use (Nominated for PFSR)
 - Managed for Passenger Car Use
 - Managed for Passenger Car Use and Motorcycle and ATV Use
 - Managed for Backcountry Road Use (not suitable for passenger cars)
 - Managed for Backcountry Road Use (not suitable for passenger cars) and Motorcycle and ATV Use
 - Managed for Administrative Use (public motorized use prohibited)
 - Managed for Administrative Use and Motorcycle and ATV Use (public motorized use limited to trail vehicles)
 - Managed for Project Use (public motorized use prohibited)
 - Managed for Project Use and Motorcycle and ATV Use (public motorized use limited to trail vehicles)
 - National Forest System Land
 - NPS Land - Wilderness (motorized and mechanized travel prohibited year round)