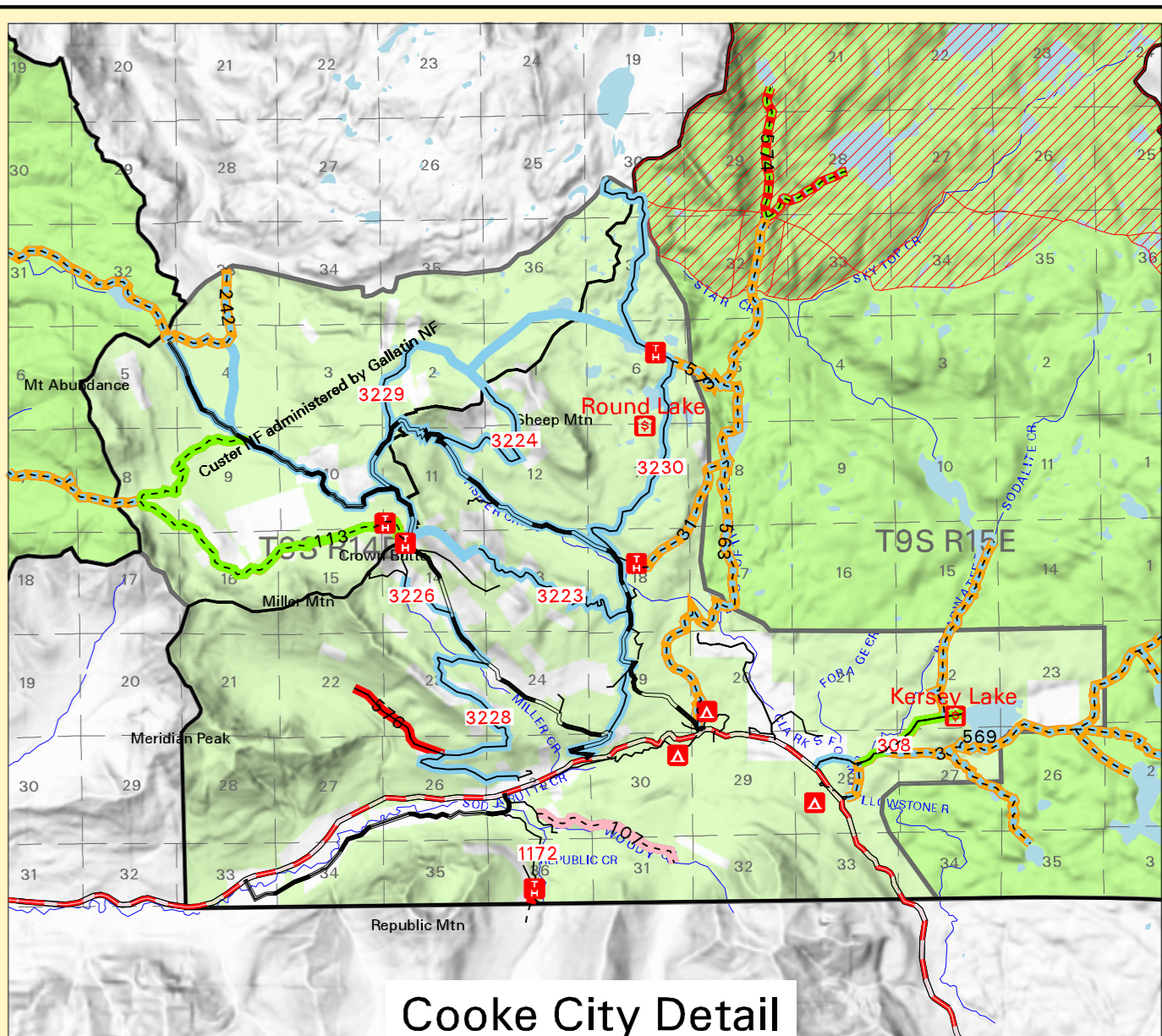
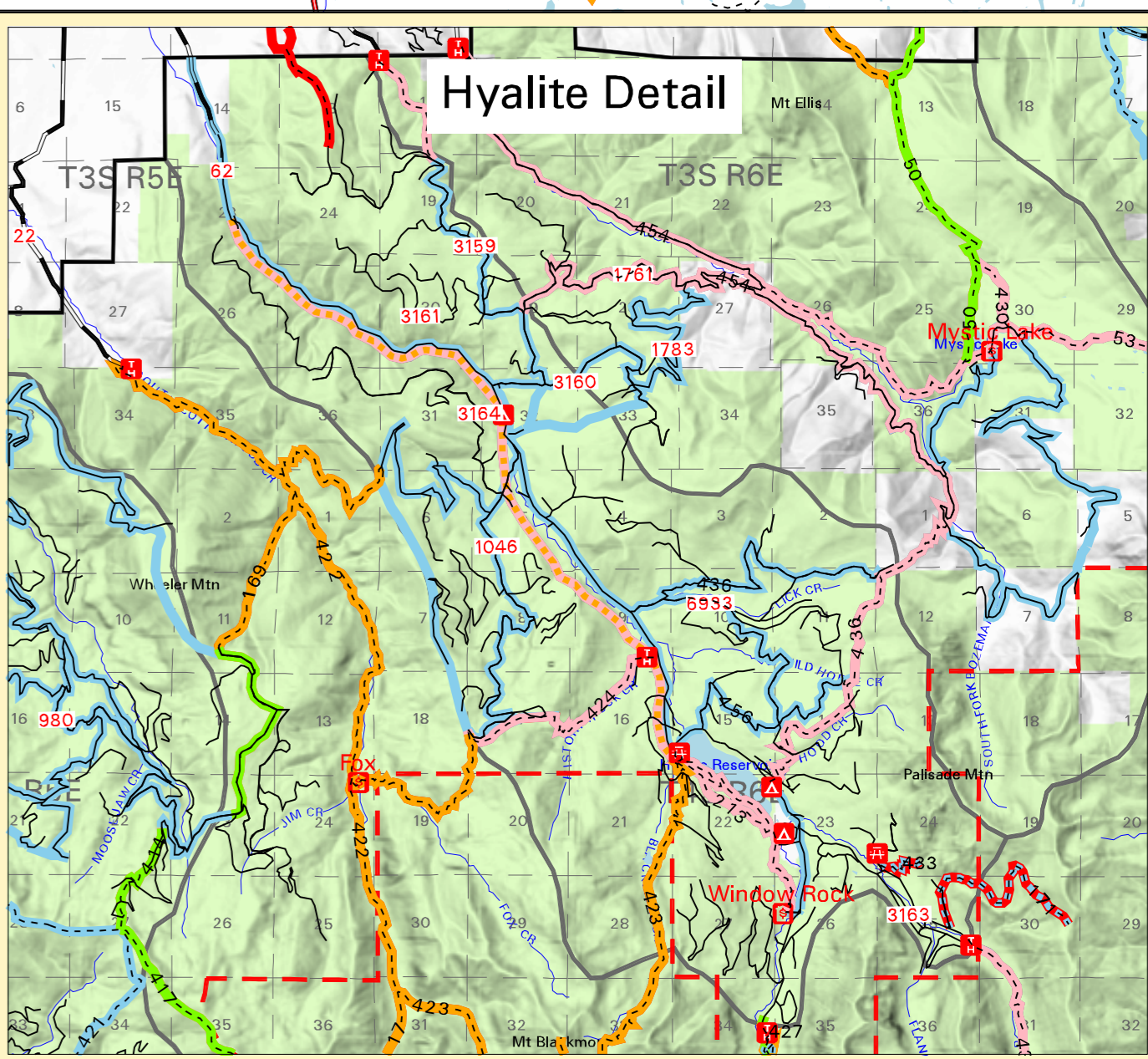
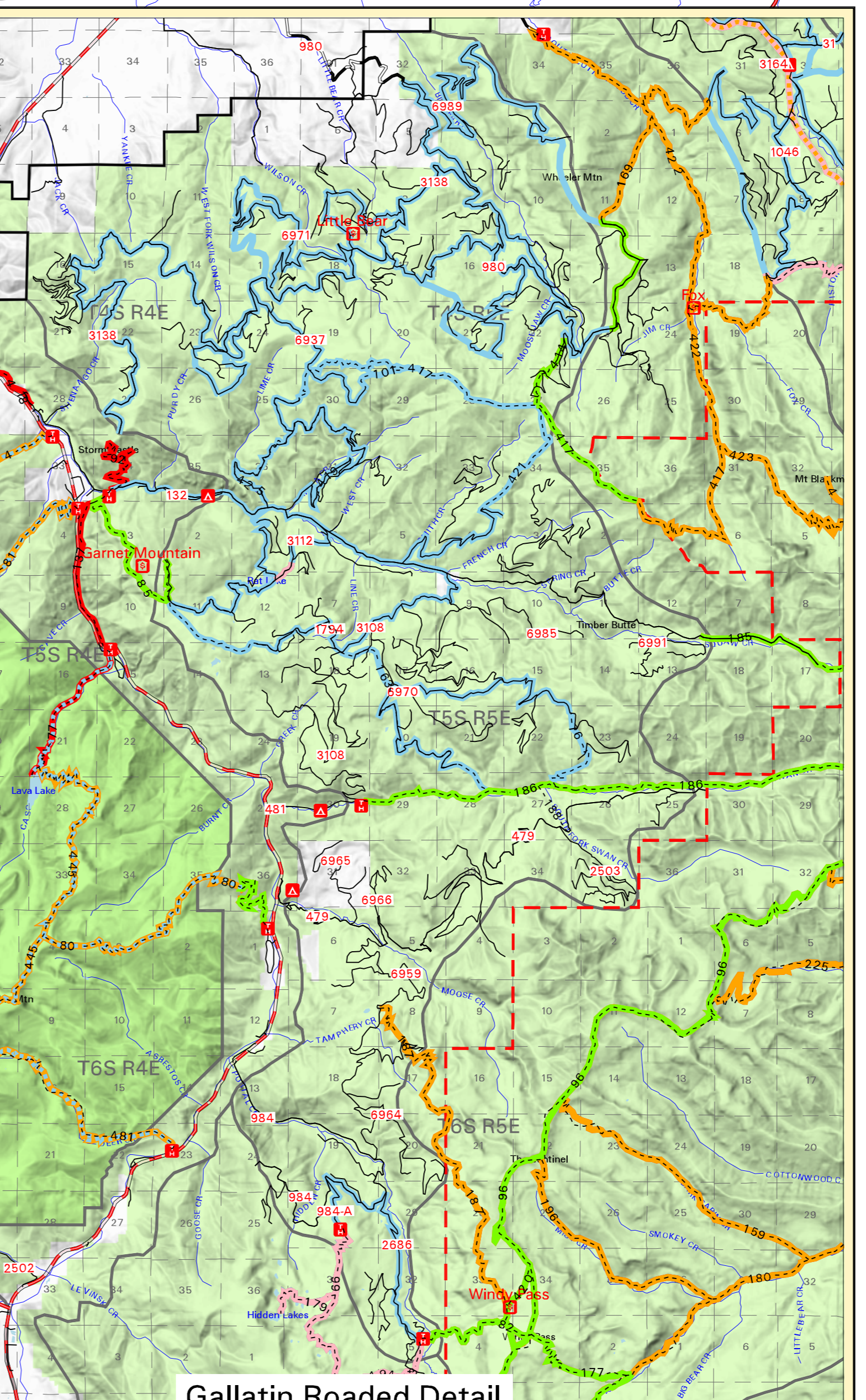
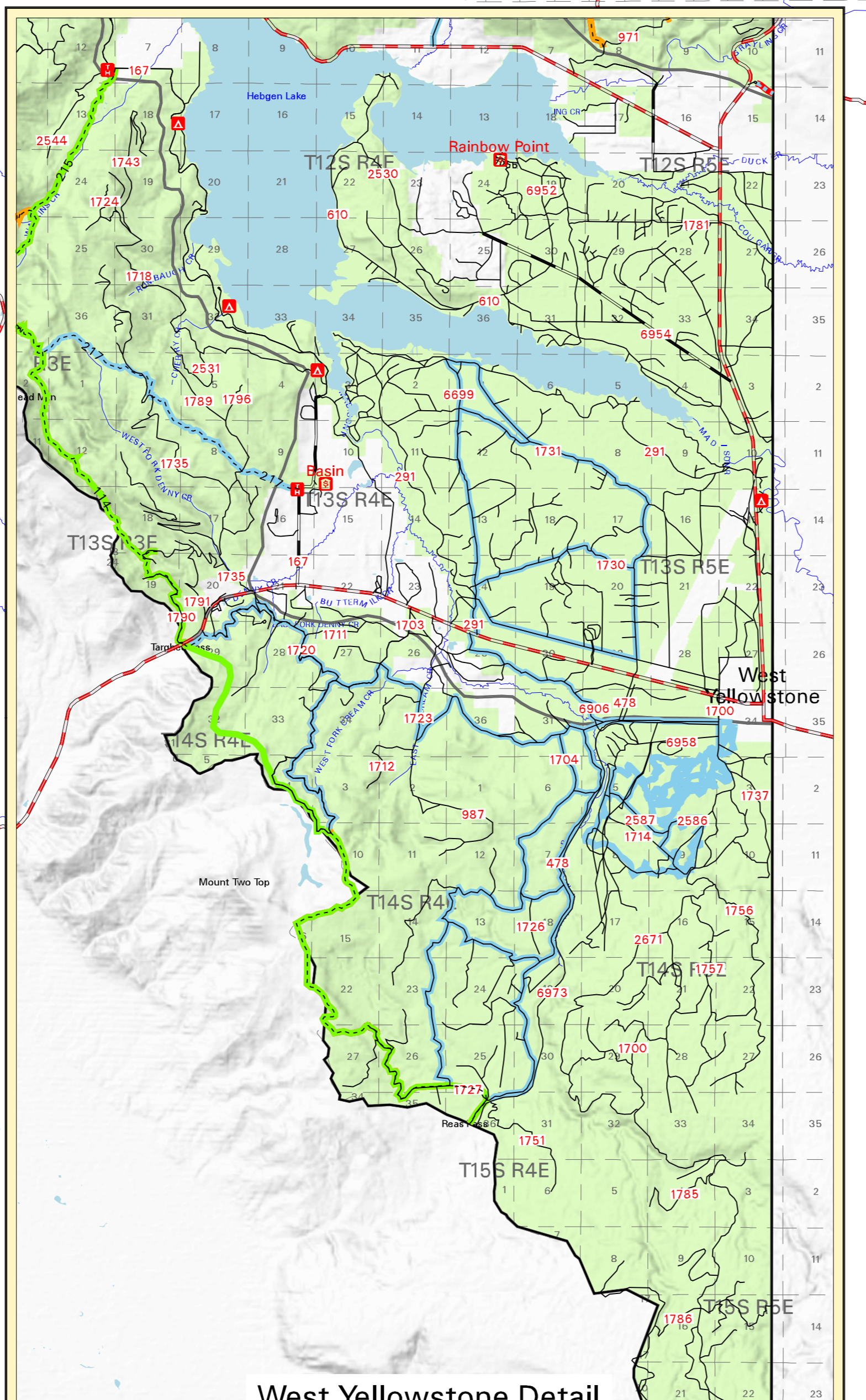
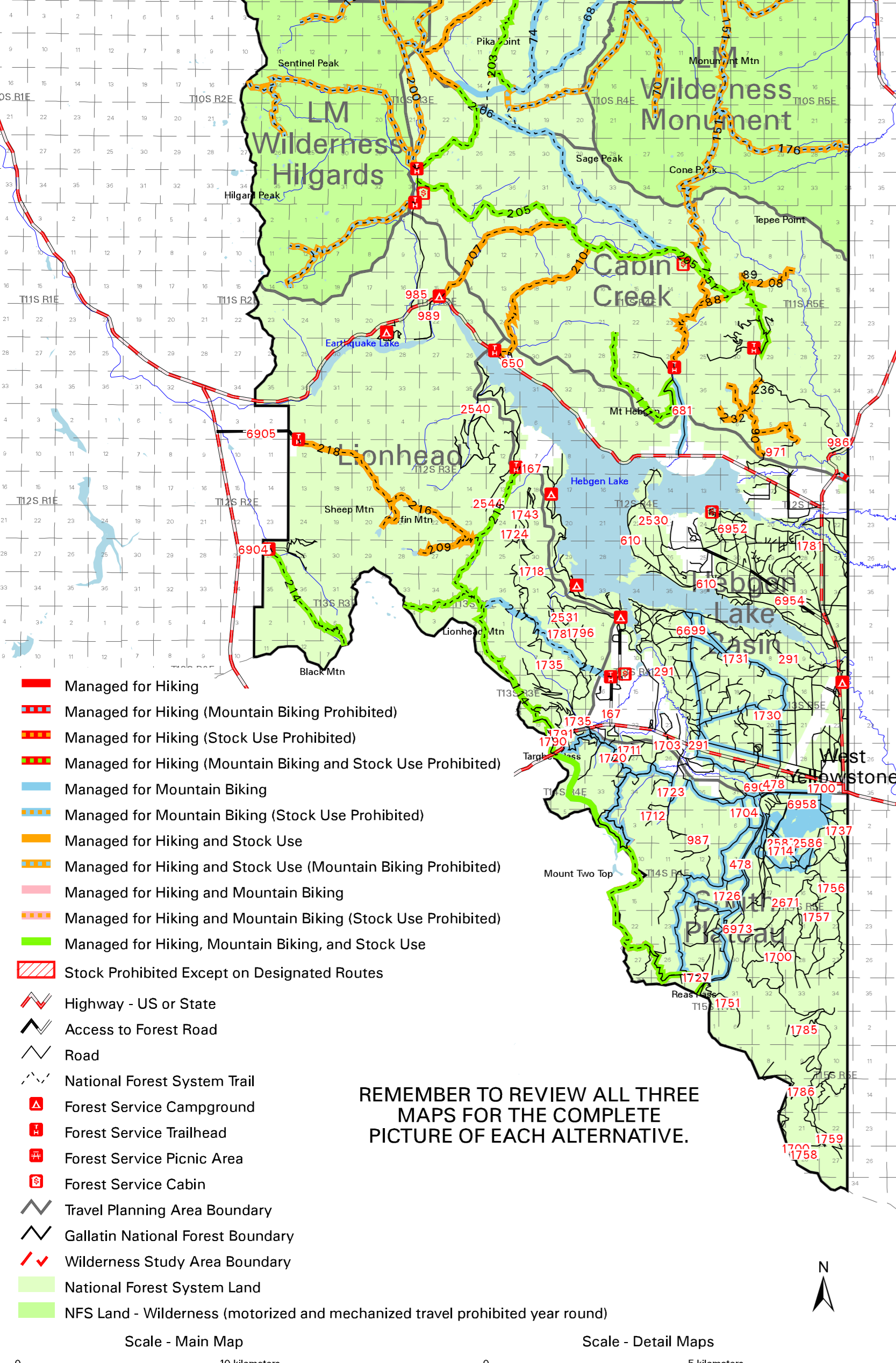
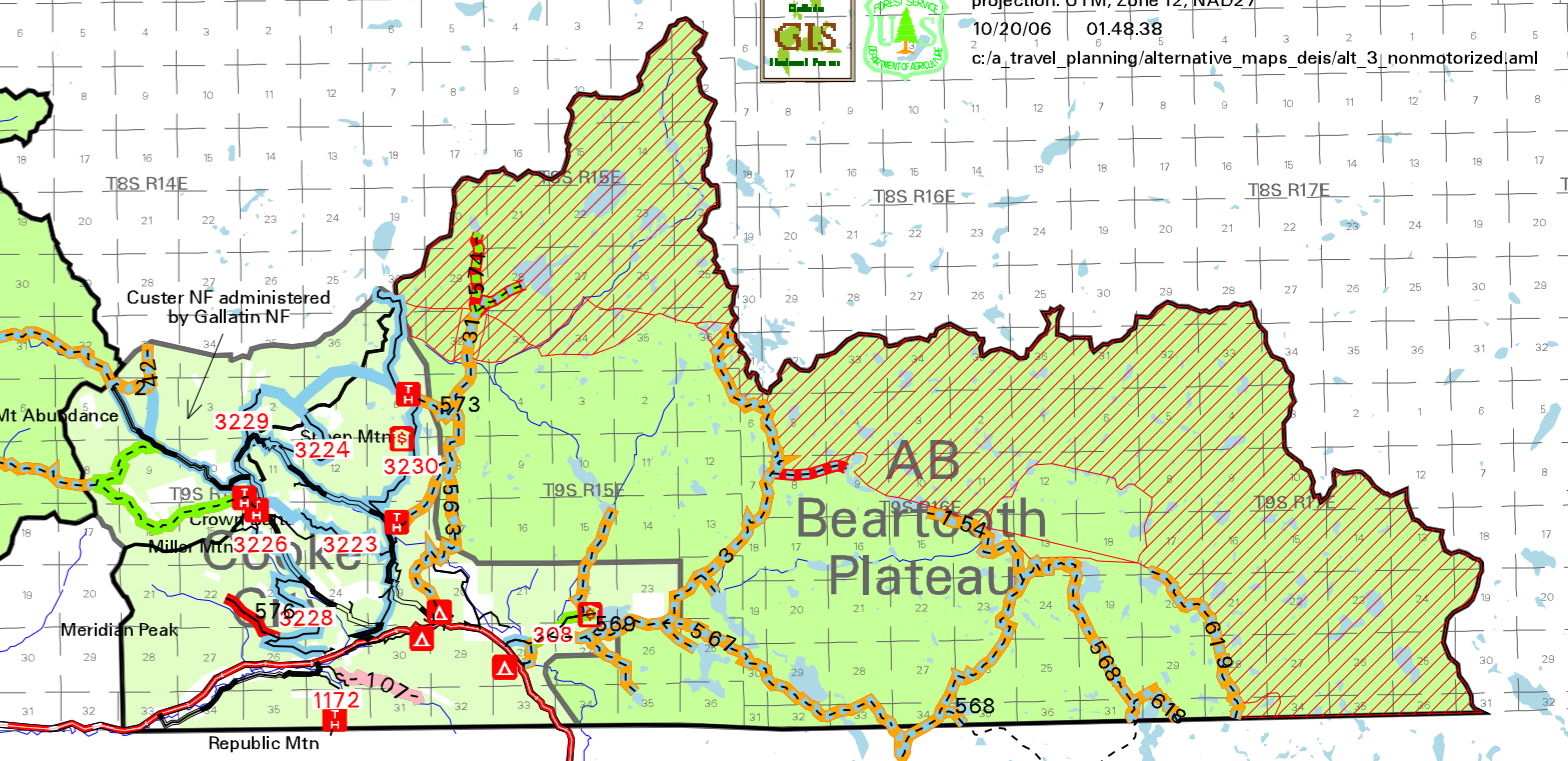
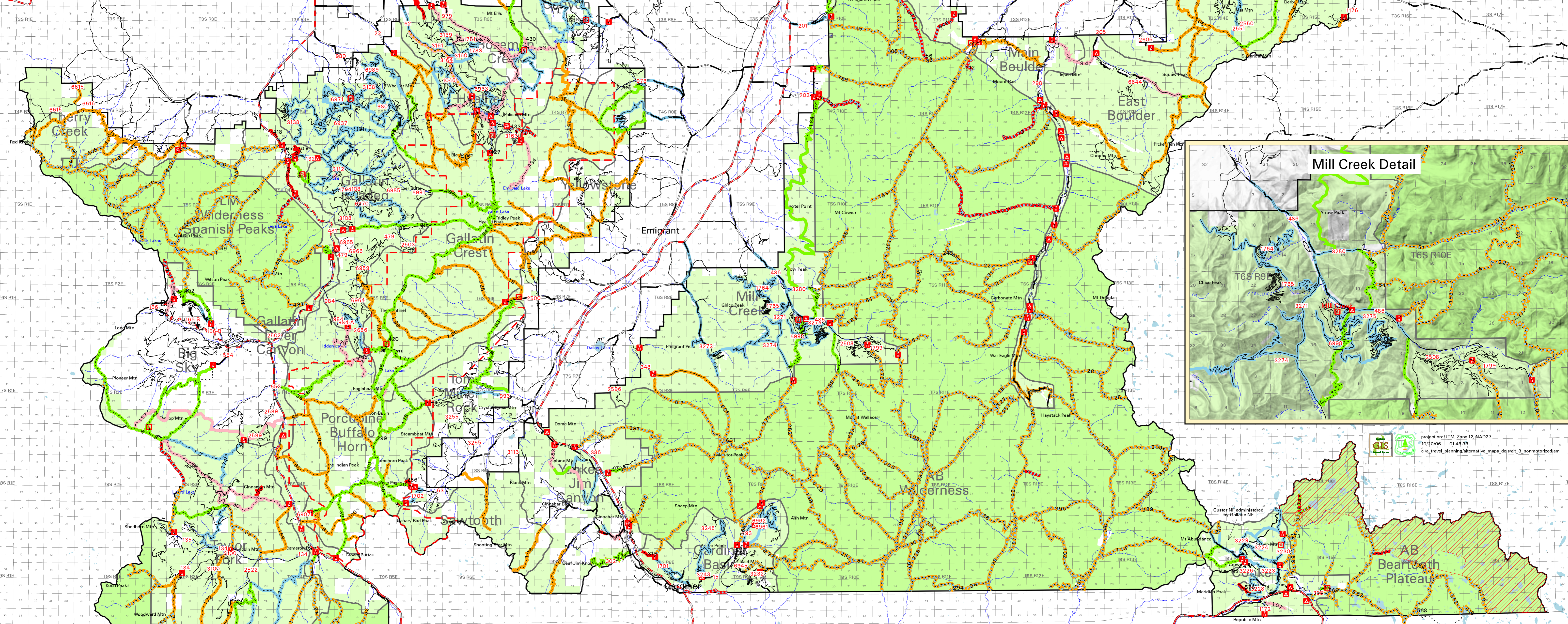


**TRAVEL PLANNING  
GALLATIN NATIONAL FOREST  
SUMMER NON-MOTORIZED  
ALTERNATIVE THREE**



- Managed for Hiking
- Managed for Hiking (Mountain Biking Prohibited)
- Managed for Hiking (Stock Use Prohibited)
- Managed for Hiking (Mountain Biking and Stock Use Prohibited)
- Managed for Mountain Biking
- Managed for Mountain Biking (Stock Use Prohibited)
- Managed for Hiking and Stock Use
- Managed for Hiking and Stock Use (Mountain Biking Prohibited)
- Managed for Hiking and Mountain Biking
- Managed for Hiking and Mountain Biking (Stock Use Prohibited)
- Managed for Hiking, Mountain Biking, and Stock Use
- Stock Prohibited Except on Designated Routes
- Highway - US or State
- Access to Forest Road
- Road
- National Forest System Trail
- Forest Service Campground
- Forest Service Trailhead
- Forest Service Picnic Area
- Forest Service Cabin
- Travel Planning Area Boundary
- Gallatin National Forest Boundary
- Wilderness Study Area Boundary
- National Forest System Land
- NFS Land - Wilderness (motorized and mechanized travel prohibited year round)

REMEMBER TO REVIEW ALL THREE MAPS FOR THE COMPLETE PICTURE OF EACH ALTERNATIVE.

Scale - Main Map: 1:50,000  
Scale - Detail Maps: 1:25,000