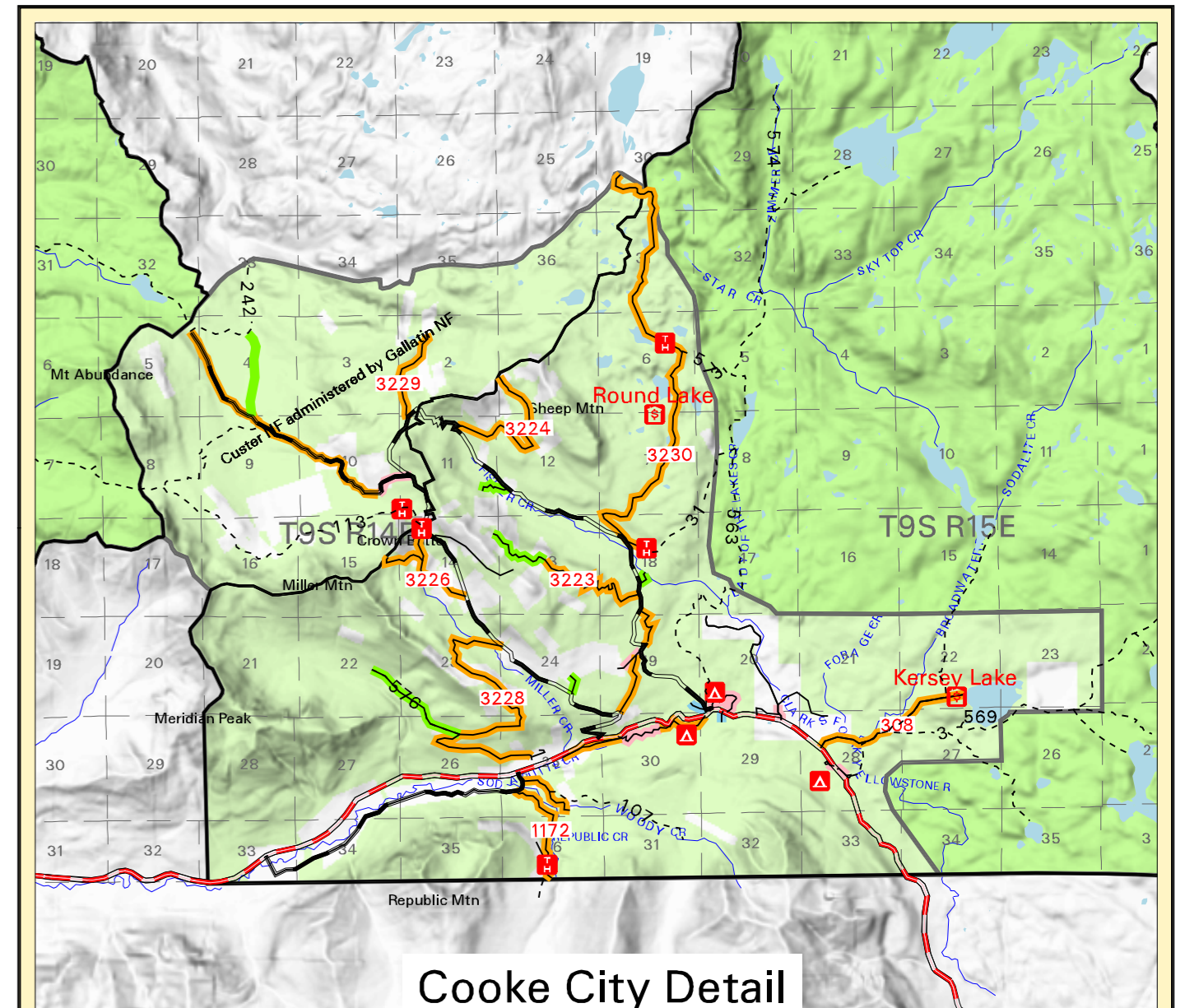
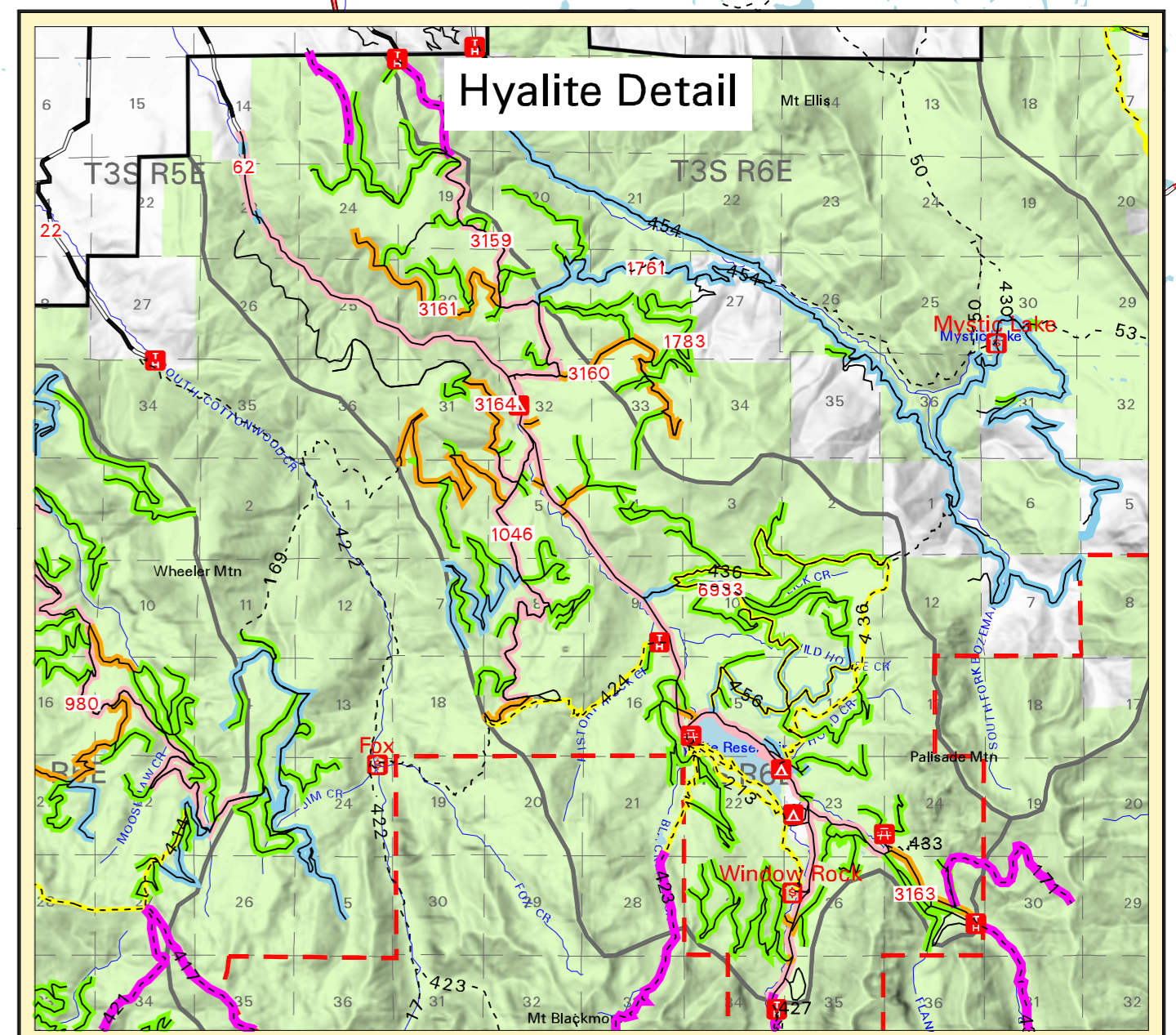
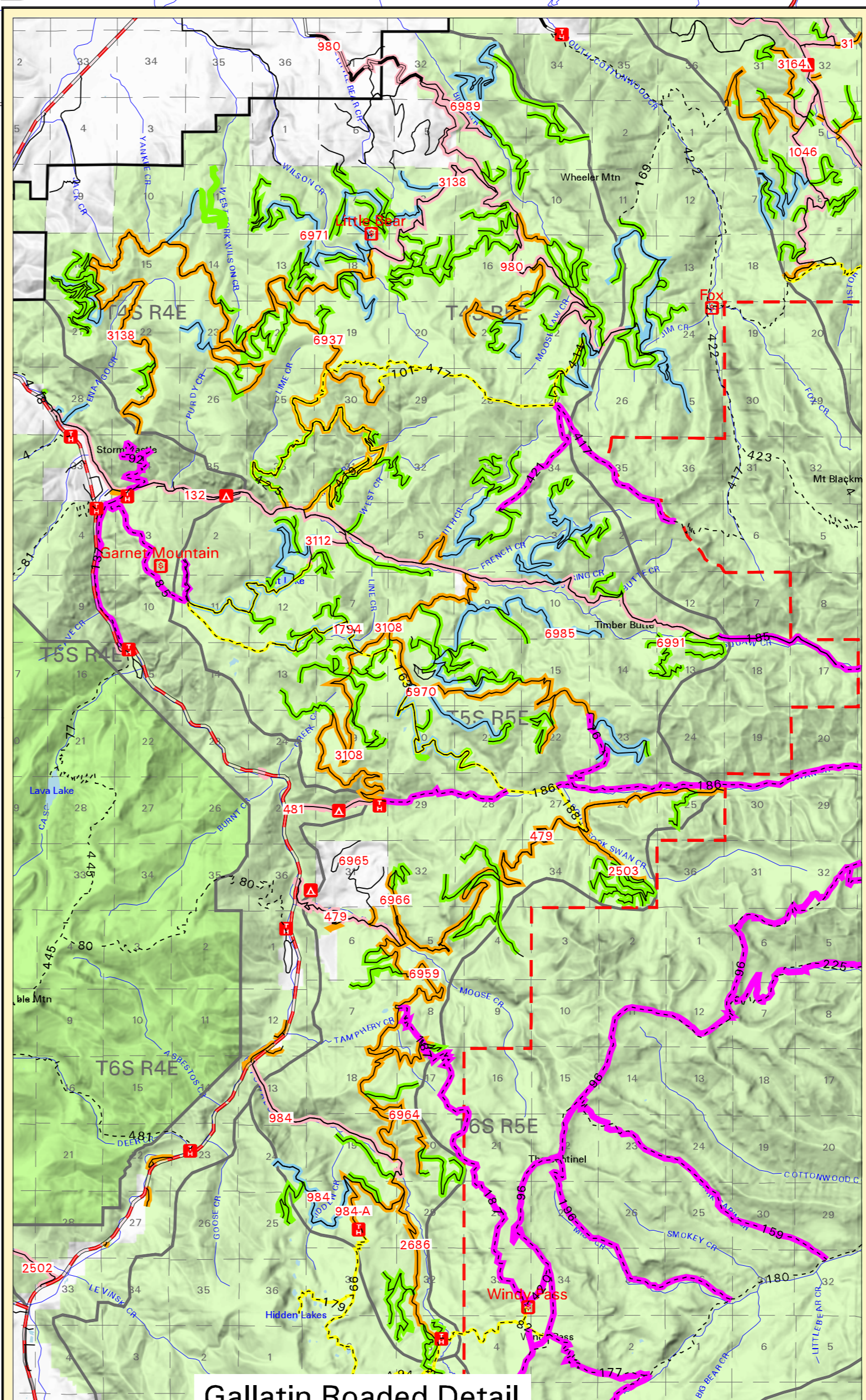
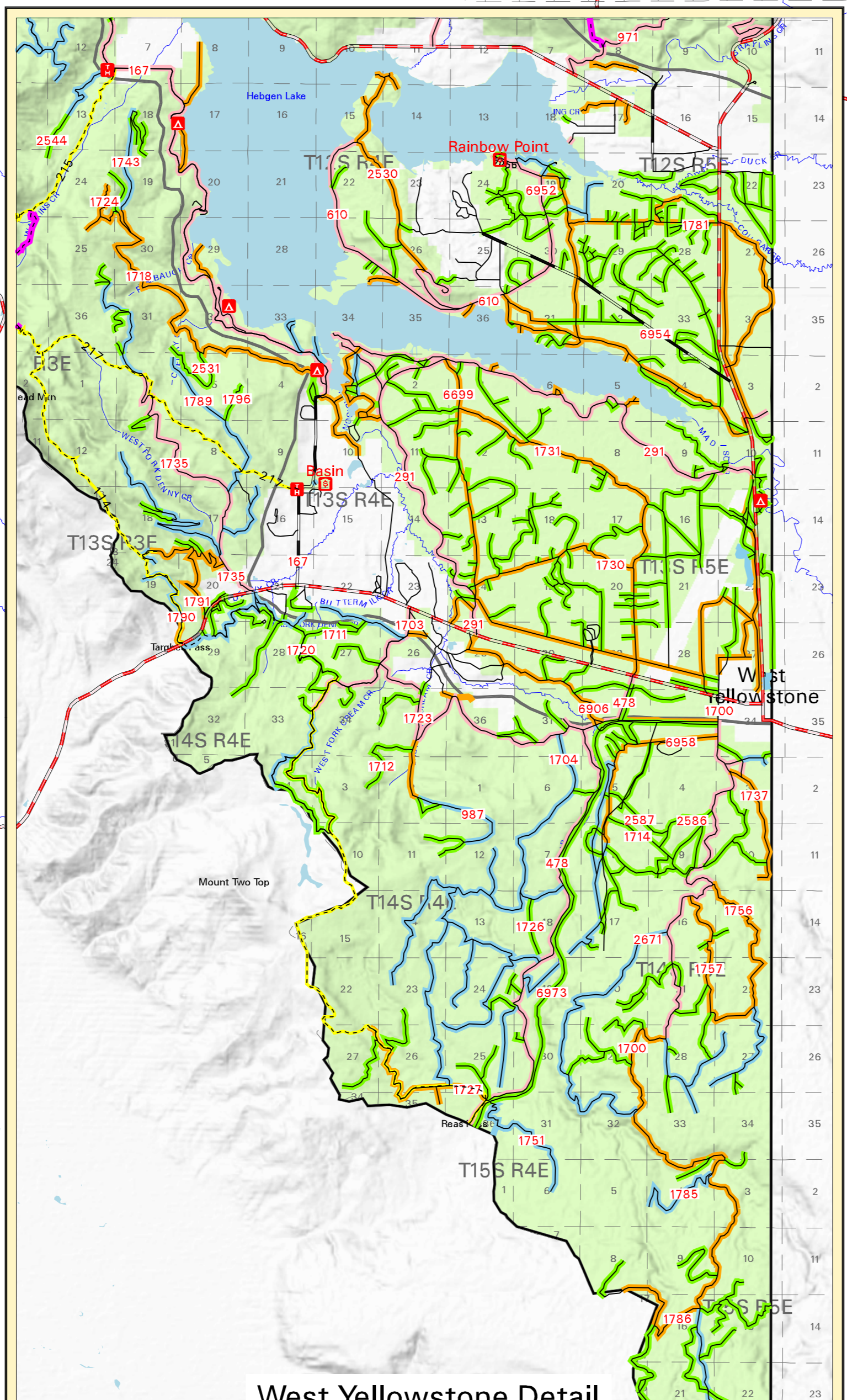
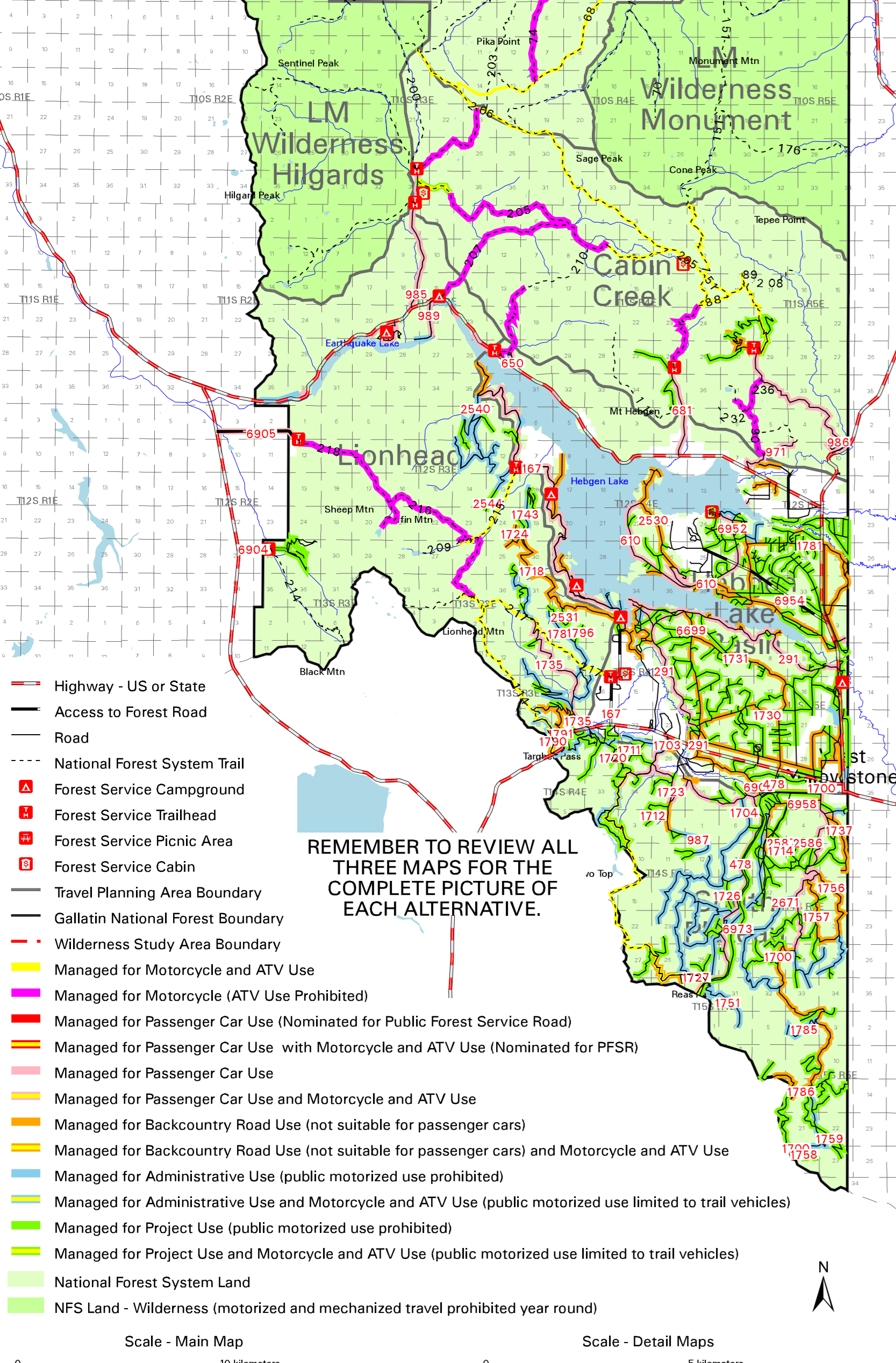
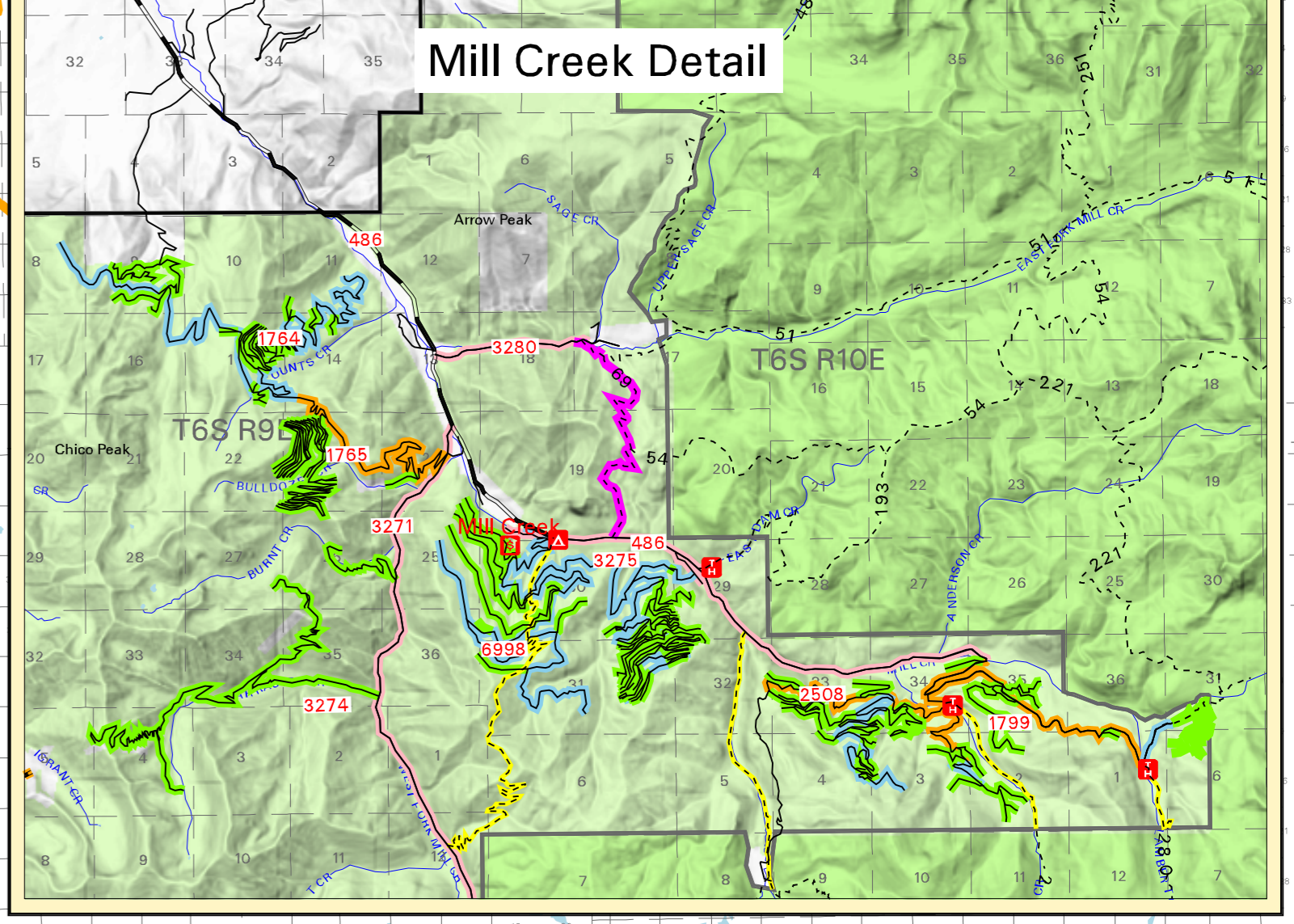
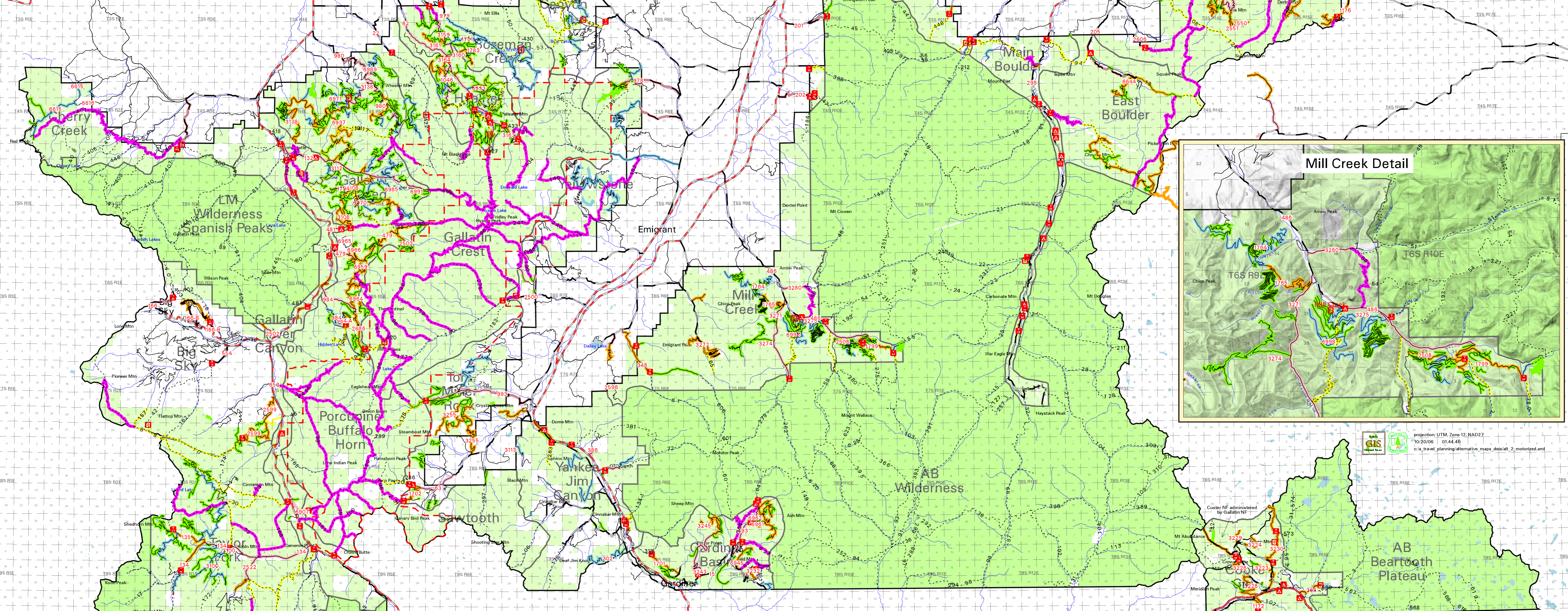


**TRAVEL PLANNING  
GALLATIN NATIONAL FOREST  
SUMMER MOTORIZED  
ALTERNATIVE TWO**



- REMEMBER TO REVIEW ALL THREE MAPS FOR THE COMPLETE PICTURE OF EACH ALTERNATIVE.**
- Highway - US or State
  - Access to Forest Road
  - Road
  - National Forest System Trail
  - Forest Service Campground
  - Forest Service Trailhead
  - Forest Service Picnic Area
  - Forest Service Cabin
  - Travel Planning Area Boundary
  - Gallatin National Forest Boundary
  - Wilderness Study Area Boundary
  - Managed for Motorcycle and ATV Use
  - Managed for Motorcycle (ATV Use Prohibited)
  - Managed for Passenger Car Use (Nominated for Public Forest Service Road)
  - Managed for Passenger Car Use with Motorcycle and ATV Use (Nominated for PFSR)
  - Managed for Passenger Car Use
  - Managed for Passenger Car Use and Motorcycle and ATV Use
  - Managed for Backcountry Road Use (not suitable for passenger cars)
  - Managed for Backcountry Road Use (not suitable for passenger cars) and Motorcycle and ATV Use
  - Managed for Administrative Use (public motorized use prohibited)
  - Managed for Administrative Use and Motorcycle and ATV Use (public motorized use limited to trail vehicles)
  - Managed for Project Use (public motorized use prohibited)
  - Managed for Project Use and Motorcycle and ATV Use (public motorized use limited to trail vehicles)
  - National Forest System Land
  - NPS Land - Wilderness (motorized and mechanized travel prohibited year round)